

**Highlights In This
Update**

1. **Availability Session**
Bethpage Library
Powell Avenue
Bethpage, NY
June 27, 2007
2:00-4:00PM
2. **Public Meeting**
June 27, 2007
Bethpage Junior
High School
Broadway
Bethpage, NY
7:00 p.m.
3. **Current Reports are
in the Main Document
Repository.**
Bethpage Public Library
Powell Avenue
Bethpage, NY 11714

And

Document Website

[http://www.dec.ny.gov/
chemical/8431.html](http://www.dec.ny.gov/chemical/8431.html)

4. **See Page 3 for
contacts regarding
this site**

June 27, 2007

**Availability Session and Public Meeting
Update on the Bethpage Community
Park, Grumman Site No. 1-30-003A-OU3
for Operable Unit 3 (OU3): Former
Grumman Settling Ponds**

NOTICE OF AVAILABILITY SESSION: Bethpage Public Library, Powell Avenue, Bethpage. An availability session is a gathering of program personnel and members of the public in a casual setting, without a formal presentation or agenda. Various representatives will be on hand to answer your questions and hear your concerns. You may stop by at any time on June 27, 2007 between 2:00 and 4:00 p.m.

PUBLIC MEETING: Bethpage High School, June 27, 2007 at 7:00 p.m. Representatives from the New York State Department of Environmental Conservation (NYSDEC) and the New York State and Nassau County Departments of Health will be present to discuss the status of the remedial investigation, interim remedial measures (IRMs) being undertaken by Northrop Grumman, NYS Superfund work for soil vapor intrusion evaluation and the overall site information available to date.

RECENT SITE DEVELOPMENTS: The Bethpage Community Park, located on Stewart Avenue, Bethpage in Nassau County has been undergoing a remedial investigation. The purpose of this remedial investigation, or RI, is to determine the extent of environmental contamination from former site activities conducted by its previous owner, the former Grumman Aircraft Engineering Corporation, now known as the Northrop Grumman Corporation (Grumman). The NYSDEC is sending this public notice as an update on the following activities related to the site:

1. **The field work for the onsite part of the RI is complete and Grumman is preparing the RI report.**
2. **The upcoming Grumman soil gas and groundwater Interim Remedial Measures (IRMs).**
3. **Soil vapor testing and the vapor intrusion evaluation.**

SITE DESCRIPTION: The 18-acre Bethpage Community Park is located in Bethpage, NY, on the west side of Stewart Avenue near Cherry Avenue. The Park is currently owned by the Town of Oyster Bay and includes a swimming pool, a baseball field, tennis courts, playgrounds, picnic areas and a parking lot. The old ice rink, which had refrigerant leaks, has been demolished in preparation of constructing the new ice rink.

SITE HISTORY: Grumman donated the current park land to the Town of Oyster Bay in 1962 for use as a park. Prior to this, Grumman used the southwest portion, or ball field area of the current park, as sludge drying areas, or settling ponds. Once dried, the sludge was removed and sent offsite for landfill disposal. A portion of the site was also used for fire control training. Prior to Grumman's investigation of the Bethpage Community Park, limited environmental investigations within the park found that contamination exceeded cleanup levels adjacent to the park on Grumman property. Grumman notified the NYSDEC of elevated levels of PCBs found as a result of several rounds of testing on the Grumman access road immediately south of the park. As a followup to the access road sampling, Grumman proposed, and eventually implemented, additional investigation of surface and subsurface soil inside the Bethpage Community Park. Ultimately, Grumman signed an order on consent to conduct a complete remedial investigation and feasibility study.

1. Grumman Remedial Investigation: Grumman is conducting a remedial investigation and feasibility study (RI/FS) related to the Bethpage Community Park, also known as Operable Unit 3 or OU3, of the Grumman site. Grumman has now completed the on-site portion of the investigation to characterize the lateral and vertical extent of any potential impacts from site-related contamination. The Grumman RI fieldwork started in 2006 and included soil, groundwater and soil gas sampling. Grumman is preparing the RI report. Field work continues for groundwater down gradient of the Bethpage Community Park. The NYSDEC expects the remedial investigation report in late summer 2007. New groundwater monitoring wells down gradient (south) of the Bethpage Community Park within the residential area are now being installed. These wells are being installed as part of the program to determine the extent of impacted groundwater. It is important to note that all public water in the vicinity of the former Grumman and U.S. Navy Bethpage facility and the surrounding community is from the Bethpage Water District (BWD). These supplies are routinely monitored and treated, if necessary, to ensure that drinking water distributed to the public meets federal, state, and county requirements. The Bethpage Water District also maintains a non-detect policy for site-related contaminants.

2. Interim Remedial Measures (IRMs):

a. An IRM, or in this case IRMs, are sometimes implemented at a site so that discrete corrective actions can take place while the overall site investigation, remediation, and decision making process, moves forward. Grumman has agreed to undertake two IRMs for the Bethpage Community Park. Design is proceeding for a soil vapor extraction system IRM along the southern and western sides of the Park. Also, Grumman is reviewing options for intercepting and remediating contaminated groundwater in the park.

b. The Town of Oyster Bay separately entered into an order on consent to do an Interim Remedial Measure (IRM). The town IRM, consisting of investigation and remediation of a portion of the park, is now substantially complete. The Town elected to enter into an IRM in order to proceed with their plans to construct the new ice rink in the Bethpage Community Park. The data generated by the Town will also be incorporated in the Northrop Grumman remedial program. A Report from the Town of Oyster Bay is forthcoming.

3. State Funded Offsite Soil Gas Survey and Vapor Intrusion Testing: The NYSDEC now requires soil gas sampling be included in the remedial investigation. Soil gas results for volatile organic compounds such as trichlorethene, dichlorethene, freon and toluene have identified areas where areas that are recommended for screening for the potential for vapor intrusion. The results of this testing will be evaluated to determine what the next course of action will be.

Both Northrop Grumman and the Town of Oyster Bay have declined to undertake specific sampling for vapor intrusion. Therefore, a NYSDEC contractor will be undertaking this work using State Superfund.

Citizen Participation Planning: The public will be kept informed and involved as investigations are conducted, alternatives are evaluated and remediation gets underway. Northrop Grumman has prepared a Citizen Participation Plan, included in the RI/FS Work Plan, which outlines steps and procedures that will be followed.

DOCUMENT REPOSITORIES: All Northrop Grumman RI/FS work plans and reports are available at the document repository and on-line at <http://www.dec.ny.gov/chemical/8431.html>. Results from the RI field testing are also available at the document repository as attachments to the monthly reports.

Documents related to the investigation and potential remediation of contamination at Bethpage Community Park will be made available at the Bethpage Public Library, Powell Avenue, Bethpage. Information related to the project can also be viewed on the NYSDEC website at: <http://www.dec.ny.gov/chemical/8431.html>

Bethpage Public Library

Powell Avenue
Bethpage, NY 11714
(516) 931-3907
Hours: M-F 9:30-9:00
Sat 9:30-5:00
Sat 9:30-1:00 (After 6/30)

(Karen Gruskin or Lois Lovisolo-Reference Librarians)

NYSDEC Region 1 Headquarters

SUNY Campus
50 Circle Road
Stony Brook, NY 11790-3409
Attn: Bill Fonda, Citizen
Participation Specialist

NYSDEC Central Office

625 Broadway, 11th floor
Albany, NY 12233-7015
Attn: Steven M. Scharf, P.E.

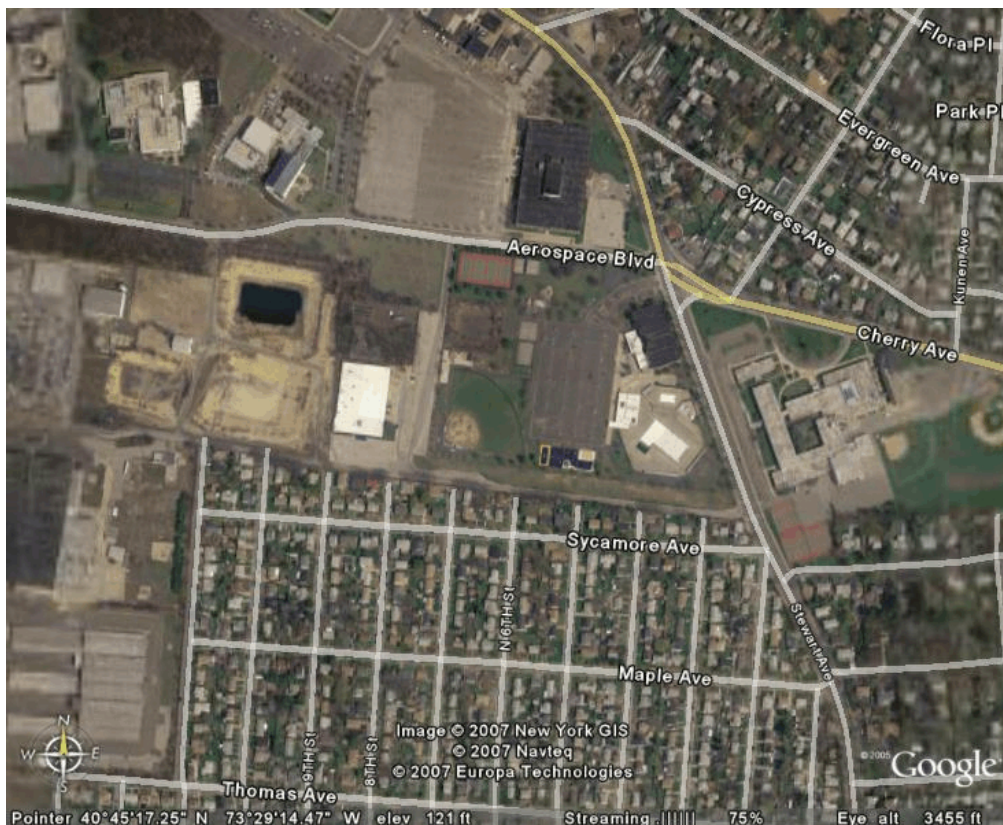
For More Information regarding this site and site related issues, please contact the following:

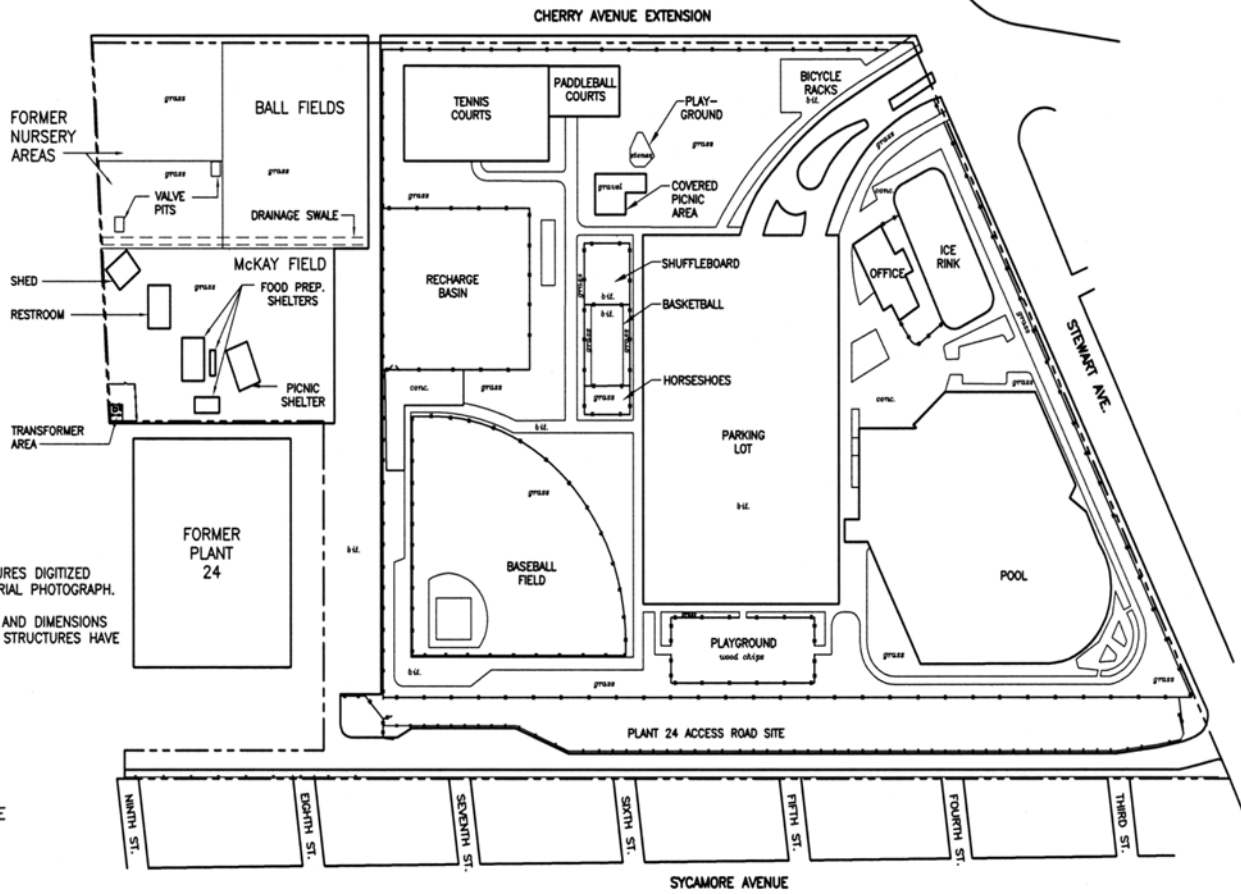
Project Engineer
Environmental Concerns
NYSDEC
Steven M. Scharf, P.E.
NYSDEC
625 Broadway, 11th Floor
Albany, NY 12233-7015
(518) 402-9620

Community Outreach
NYSDEC
Bill Fonda or Aphrodite Montalvo
NYSDEC-SUNY Campus
50 Circle Road
Stony Brook, NY 11790-3409
(631) 444-0350

Public Health Concerns
NYSDOH
Jacquelyn Nealon
NYSDOH
547 River Street
Troy, NY 12180
1-800-458-1158 Extension 2-7880

Bethpage Community Park and Surrounding Community: Areal View





- NOTES:
1. PARK FEATURES AND STRUCTURES DIGITIZED FROM A MARCH 14, 1974 AERIAL PHOTOGRAPH.
 2. THE APPROXIMATE LOCATIONS AND DIMENSIONS OF THE PARK FEATURES AND STRUCTURES HAVE BEEN FIELD VERIFIED.

- LEGEND:
- PROPERTY LINE
 - * * * FENCE
 - *--- TEMPORARY FENCE



db Dvirka and Bartilucci
 CONSULTING ENGINEERS
 A DIVISION OF WILDMF CONSULTANTS, P.C.

TOWN OF OYSTER BAY
 BETHPAGE COMMUNITY PARK
 BETHPAGE, NEW YORK
**SITE PLAN AND
 SURROUNDING AREAS**

FIGURE 2-2