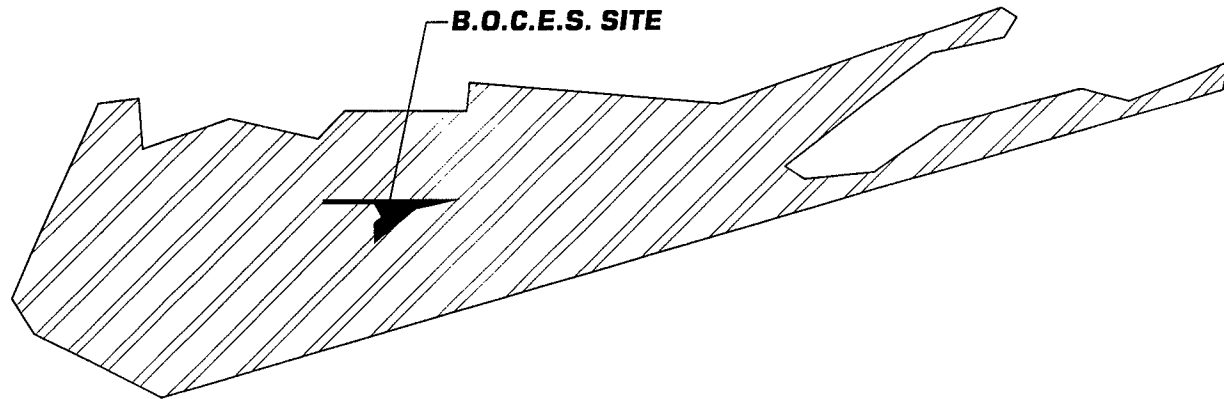


**GRUMMAN** AEROSPACE  
CORPORATION  
BETHPAGE FACILITY



**PHASE I SITE ASSESSMENT**  
**B.O.C.E.S. SITE**  
GRUMMAN AEROSPACE CORPORATION  
BETHPAGE, NEW YORK



**Dvirka and Bartilucci**

**Consulting Engineers**

MARCH 1996



**Dvirka  
and  
Bartilucci**

CONSULTING ENGINEERS

330 Crossways Park Drive, Woodbury, New York, 11797-2015  
516-364-9890 ▪ 718-460-3634 ▪ Fax: 516-364-9045

March 5, 1996

John Ohlmann, P.E.  
Consultant for  
Grumman Aerospace Corporation  
Mail Stop: D08-001  
Bethpage, NY 11714-3582

Re: Phase I Site Assessment  
B.O.C.E.S. Site  
Bethpage, NY  
D&B No. 1167-W

Dear Mr. Ohlmann:

Enclosed for your review, please find six (6) copies of the document entitled,

*“Phase I Site Assessment  
B.O.C.E.S. Site  
Bethpage, New York”*

If you have any questions and/or comments, please do not hesitate to contact Mr. David Glass or me at (516) 364-9892.

Very truly yours,

Richard M. Walka  
Vice President

RMW/CW/cc

cc without encl.: A. Postyn (GAC)  
D. Glass (D&B)

▲1167/RMW96-19.LTR

**JOHLMANN**

MAR 6 1996

**PHASE I SITE ASSESSMENT**

**GRUMMAN AEROSPACE CORPORATION  
B.O.C.E.S. SITE  
BETHPAGE, NEW YORK**

**PREPARED BY**

**DVIRKA AND BARTILUCCI  
CONSULTING ENGINEERS  
WOODBURY, NEW YORK**

**MARCH 1996**

**PHASE I SITE ASSESSMENT**  
**GRUMMAN AEROSPACE CORPORATION**  
**B.O.C.E.S. SITE**  
**BETHPAGE, NEW YORK**

TABLE OF CONTENTS

<u>Section</u>	<u>Title</u>	<u>Page</u>
<b>1.0</b>	<b>INTRODUCTION .....</b>	1-1
<b>2.0</b>	<b>SITE DESCRIPTION .....</b>	2-1
	2.1 Site Setting.....	2-1
	2.2 Facility Overview .....	2-4
<b>3.0</b>	<b>SITE HISTORY .....</b>	3-1
	3.1 Former Uses.....	3-1
	3.2 Present Uses.....	3-2
<b>4.0</b>	<b>REGULATORY COMPLIANCE HISTORY .....</b>	4-1
	4.1 Local Agency File Search .....	4-1
	4.2 State and Federal Environmental Data Base Search Review .....	4-3
<b>5.0</b>	<b>FINDINGS .....</b>	5-1
	5.1 On-Site Indicators of Contamination.....	5-1
	5.2 Potential Areas of Environmental Concern .....	5-1
	5.3 Potential Off-Site Sources of Contamination .....	5-2
<b>6.0</b>	<b>RECOMMENDATIONS.....</b>	6-1

---

**List of Appendices**

Aerial Photographs .....	A
Environmental Data Base Search.....	B
Supplemental Information.....	C
Sanborn Mapping and Geographic Information Service .....	D
References.....	E

TABLE OF CONTENTS (continued)

---

**List of Figures**

2-1 Site Location Map ..... 2-2  
2-2 Site Plan..... 2-3

**Section 1**

## 1.0 INTRODUCTION

This document presents the findings of a Phase I Site Assessment undertaken for the Grumman Aerospace Corporation (GAC) property known as the B.O.C.E.S. Site, located at 610 Hicksville Road, Bethpage, New York. Information presented in this report has been compiled based upon site inspections conducted on December 4 and 12, 1995; an evaluation of reasonably obtainable record sources; and interviews with representatives of Grumman Aerospace Corporation and the B.O.C.E.S. Technical School. The objective of the Phase I Site Assessment is to identify the presence or likely presence of any hazardous substances or petroleum products on the property based on existing conditions at the site that indicates a past release, an existing release, or a material threat of a release. This Phase I Site Assessment is intended to meet the applicable requirements of the American Society for Testing and Materials (ASTM) Standard E1527-94 entitled, "Standard Practice for Environmental Site Assessments: Phase I Environmental Site Assessment Process."

Section 2 of this document presents a description of the site and surrounding areas. An evaluation of the historical uses of the site and surrounding areas is presented in Section 3. The regulatory compliance history of the site and surrounding areas is presented in Section 4. Section 5 presents the findings of the Phase I Site Assessment and identifies potential areas of environmental concern. Recommendations for further investigatory activities (Phase II Site Assessment) are provided in Section 6.0.

In an effort to document the review of historical information sources, aerial photographs dated 1950 through 1988 are presented in Appendix A. To document the review of standard environmental record sources, a computer environmental data base search is presented in Appendix B. Supplemental information documenting the review of available files is presented in Appendix C. A certification that Sanborn Maps are not available for the B.O.C.E.S. site is provided by Sanborn Mapping and Geographic Information Service in Appendix D. References are listed in Appendix E.

# Section 2





## **2.0 SITE DESCRIPTION**

The following presents an overview of the general environmental setting of the property and documents the observations made during the inspections conducted on December 4 and 12, 1995.

### **2.1 Site Setting**

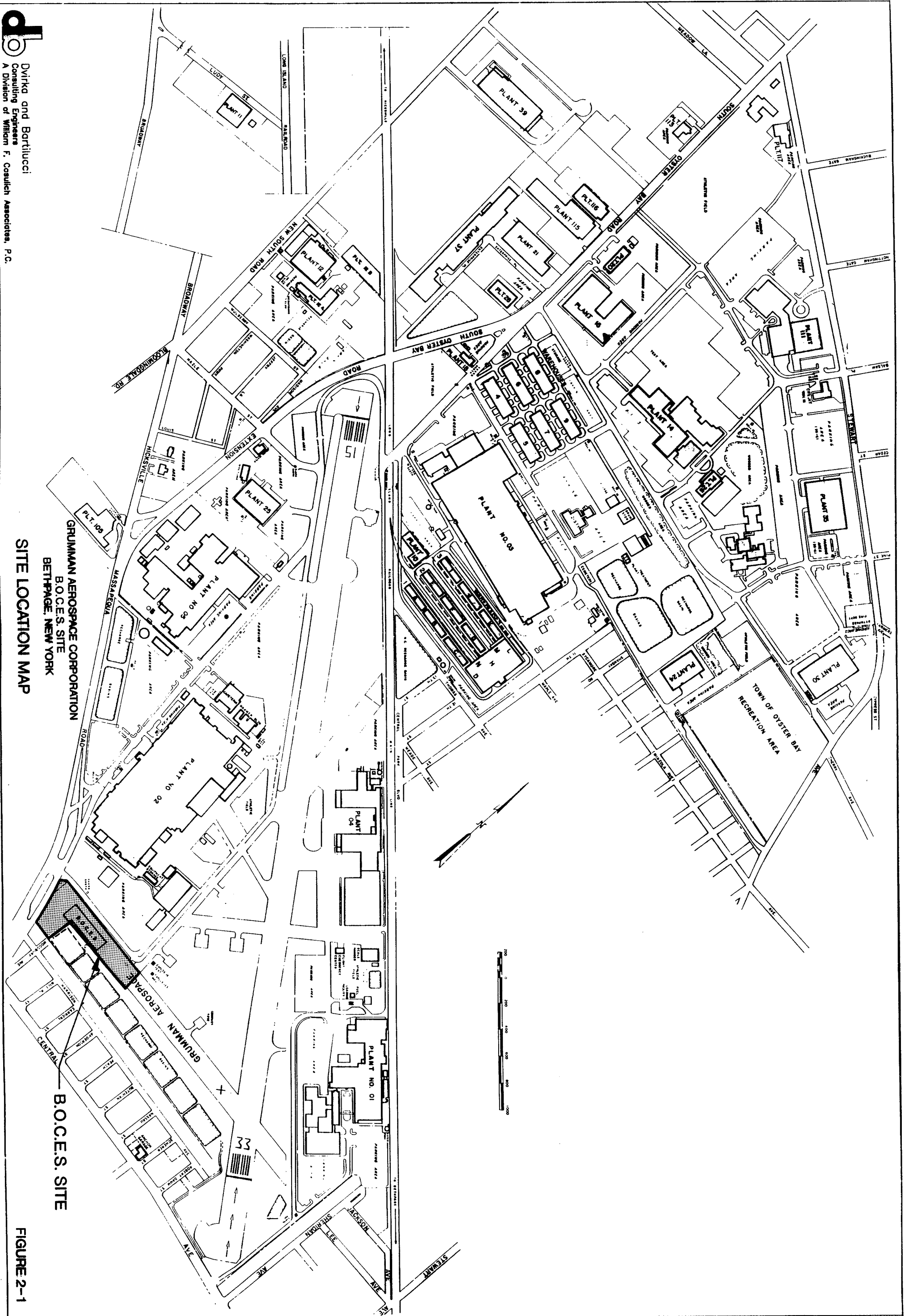
The B.O.C.E.S. (Board of Cooperative Educational Services of Nassau County) Site is located at 610 Hicksville Road in Bethpage, Town of Oyster Bay, New York. It is located at the southwest corner of the Grumman Aerospace Corporation Bethpage Facility. A site location map is presented on Figure 2-1. The site is approximately 3.8 acres (current Tax ID No.: Section 46, Block 323, Lots 201, 214, part of 17E and part of 17G) and is currently owned by Grumman Aerospace Corporation. The building and associated parking areas are leased by B.O.C.E.S. for aviation and aerospace technologies and carpentry vocational training.

The property is zoned Industrial H and is bordered by industrial zoning to the northwest, north and east. Directly to the west, and south along Route 107/Hicksville Road, is an area of strip commercial zoning. Further west is high density residential zoning. Directly south of the site are a series of receiving and recharge basins owned by GAC, and further south is high density residential zoning. Strip commercial zoning is found along Central Avenue to the southeast. A site plan is provided on Figure 2-2.

The majority of the site is paved or occupied by the approximately 50,000 square foot building. The topography of the site is generally level and ground elevation is approximately 110 feet above mean sea level, with depth to groundwater approximately 40 feet below grade. Storm drains are located in the paved parking areas and the direction of surface drainage varies with location. According to the Soil Survey of Nassau County New York (1987), prepared by



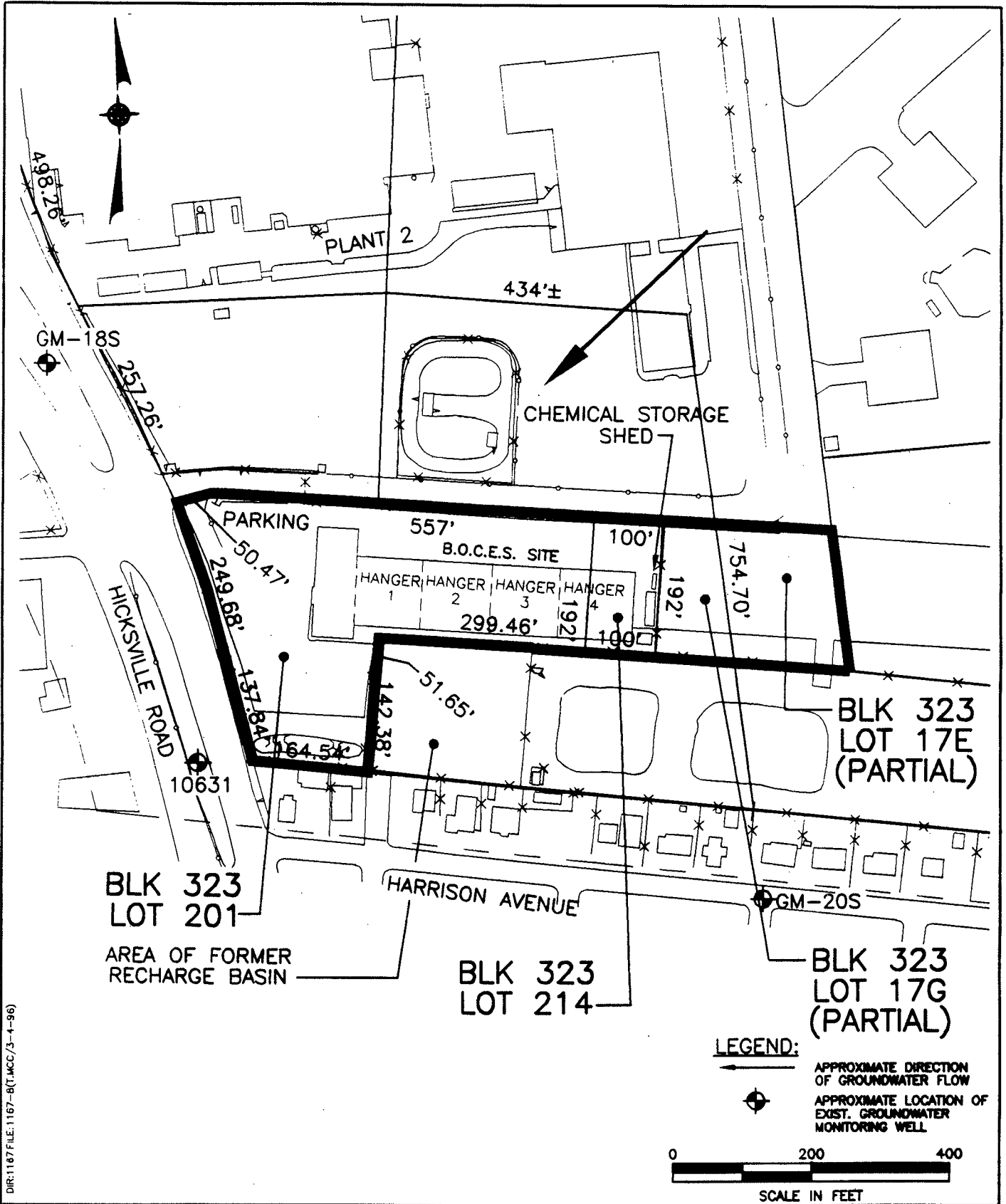
Dvirka and Bartolucci  
Consulting Engineers  
A Division of William F. Coulich Associates, P.C.



GRUMMAN AEROSPACE CORPORATION  
B.O.C.E.S. SITE  
BETHPAGE, NEW YORK

SITE LOCATION MAP

FIGURE 2-1



DIR:1187 FILE:1167-B(C,MCC/3-4-96)

GRUMMAN AEROSPACE CORPORATION  
 BETHPAGE FACILITY  
 B.O.C.E.S. SITE

**SITE PLAN**



Dvirka and Bartilucci  
 Consulting Engineers  
 A Division of William F. Cosulich Associates, P.C.

FIGURE 2-2

the Soil Conservation Service (SCS), the majority of the site is classified as "Ug: Urban Land." Urban land is defined as an area with at least 85% asphalt, concrete or other impervious building material.

## 2.2 Facility Overview

According to Grumman Aerospace Corporation records, the B.O.C.E.S. building was constructed in 1976. The one story building with concrete slab on grade is connected to public water supply lines and the Nassau County Sewer system. Based on a review of Grumman Aerospace Corporation Utility Quadrangle No. 112, prior to connection to the Nassau County sewer system in 1977, the B.O.C.E.S. building utilized an on-site sanitary disposal system composed of 4 leaching pools, located off the southwest corner of the building.

A site inspection and interviews with representatives of B.O.C.E.S. were conducted on December 4 and 12, 1995. An overview of the B.O.C.E.S. building and the parking areas within the project site boundaries is provided below.

- Class Rooms and Office Area
  - Janitors Closet
  - Nurses Office
  - Computer Instructions Room
  
- Hangar or Bay No. 1 (Air Frame Maintenance)
  - Caged Tool Crib (one quart oil cans, zyglon developer, magnaflux developer, wood stain)
  - Aircraft Engines
  - Aircraft Parts
  - Fuel System Fuel Flow Test Bench
  - Hydraulic Supply System Test Bench
  
- Hangar or Bay No. 2 (Aircraft Power Plant Maintenance)
  - Student Tool Boxes and Lockers
  - Safety-Kleen Parts Washer
  - Sinks
  - Degreaser Storage Cabinet
  - Paint Storage Cabinet

- Hangar or Bay No. 3 (Electric)
  - Paint Spray Booth (aerosol spray cans)
  - Sand Blaster
  - Paint Storage Cabinets
  - Lead Acid Battery Storage Room (Inaccessible)
  - NiCad Battery Storage Room
  - Welding Booths
  - Supply Room (Housepaints, Ice Melt, Cleaning Supplies)
  - Custodians Office
  
- Hangar or Bay No. 4 (Carpentry)
  - Drill Presses and Saws
  - Wood Frame House Under Construction
  - Aircraft Parts
  
- Boiler Room
  - Floor Drain
  
- Air Compressor Room

According to representatives of B.O.C.E.S., the boiler which supplies heat to the building, is fueled by a 10,000 gallon No. 2 underground fuel oil storage tank (GAC Tank No. 02-35-1) located near the southwest corner of the building. A transformer on a concrete pad is also located in this area. It should be noted that this transformer was not marked as PCB-containing as would be required if it contained PCBs and, in addition, no staining was observed on or near the transformer pad.

According to a representative of GAC, a patch noted in the asphalt near the location of Tank No. 02-35-1 during the December 4, 1995 site inspection is a result of a modification to the tank required to perform tightness testing. No documentation of the modification was available, however, in GAC files.

Behind the building (on the east side) are two freestanding sheds. One shed is used to store lumber. The other shed, according to conversations held with representatives of B.O.C.E.S. during the December 4, 1995 site inspection, is used to store aviation liquids. Five to 10 gallon

cans containing the following materials were observed in the Aviation Liquids Storage Shed: hydraulic oils, paint, paint thinners, toluene and methyl ethyl ketone. In addition, three 55-gallon drums labeled Aeroshell Oil, Petroleum Distillate and Degreaser were observed in the shed. The Aviation Liquids Storage Shed is approximately 100 square feet, with concrete slab on grade and concrete block walls. Also noted outside the shed, uncovered, on the asphalt pavement during the December 4, 1995 inspection were three 55-gallon drums. One of these drums was unlabeled, one was labeled "waste oil" and the third was labeled "varnish."

The northeastern portion of the site includes a section of the former south runway of the GAC Bethpage Facility.

**Section 3**

### 3.0 SITE HISTORY

The following presents a description of the history of the development of the site and surrounding areas. Information presented in this section has been compiled based upon a review of available aerial photographs dated 1950-1988 (see Appendix B), available files at the Grumman Aerospace Corporation Bethpage Facility and the Nassau County Department of Health (NCDOH) (see Appendix C), interviews with representatives of GAC and B.O.C.E.S. and the findings of the site inspections undertaken on December 4 and 12, 1995.

#### 3.1 Former Uses

##### Aerial Photograph Review

A review of aerial photographs shows that in 1950, a majority of the site was in use as the western end of a runway. West of the existing receiving and recharge basins was open space. North of the site, small evenly spaced white dots can be seen on the 1950 aerial which have been identified (by a review of Grumman Aerospace Corporation Utility Quadrangle Map 112) as manhole covers for sanitary leaching pools for GAC Plant 2, also located to the north. South of the site, some residential development is noted.

Between 1950 and 1962 there were no notable on site changes. A portion of the land to the north of the site had been paved during this time period and was in use for parking.

A review of the 1969 aerial shows that a portion of the runway (northwest corner) was in use for parking. Off-site to the north, the parking area was expanded eastward and additional buildings were constructed to the east of Plant 2.

The 1976 aerial shows that the runway was no longer in use for parking. Between 1976 and 1988, a portion of the runway had been replaced with a building. The southwestern portion of the site had been paved for parking, and the first receiving basin located southeast of the



property had been partially backfilled. The eastern portion of the site was in use for parking of airplanes.

### Former Uses

The site was utilized by Grumman Aerospace Corporation from prior to 1950 through the early 1970's primarily as the west end of the "south" runway. Based on available information, the building was constructed in 1976 for use by B.O.C.E.S. as a school. Construction drawings were not available at the Town of Oyster Bay Building Department or in GAC's Bethpage files. According to representatives of B.O.C.E.S., the classrooms and Hangars 1 through 3 were part of the initial construction. Hangar 4 was constructed in approximately 1985, to provide space for courses in construction. "Hands-on" classes were held in flight training and aircraft maintenance, including bodywork and engine repair. The maximum number of students who attended the school was approximately 500, in 1988.

According to representatives of B.O.C.E.S., with the exception of 5-gallon cans of fuel used to taxi airplanes onto GAC property, fueling of aircraft was not performed on-site.

Sheds utilized for the storage of lumber and chemical supplies located off the east side of the building were constructed by B.O.C.E.S.

### **3.2 Present Uses**

At the time of the December 4, 1995 site inspection, B.O.C.E.S. was leasing the property from GAC and holding classes for 96 students. However, B.O.C.E.S. is in the process of relocating. Many items in the school have been tagged for auction. A 20 cubic yard dumpster located on the north side of the property containing discarded items was noted. According to a representative of B.O.C.E.S., aviation classes are being moved to a location near Republic Airport in Farmingdale, and carpentry classes are being held at the Carle Place B.O.C.E.S. building.

# Section 4

## **4.0 REGULATORY COMPLIANCE HISTORY**

This section presents a discussion of the regulatory compliance history of the site and surrounding areas. Information presented in this section has been compiled based upon a review of Grumman Aerospace Corporation files available at the Bethpage facility as well as Nassau County Department of Health (NCDOH) files and review of available federal and state environmental data bases.

### **4.1 Local Agency File Search**

According to an undated list of petroleum storage tanks for the GAC Bethpage facility, on file at NCDOH, the 10,000-gallon UST (Tank No. 02-35-7) supplies No. 2 fuel oil to the B.O.C.E.S. building boiler. The tank is constructed of steel with an asphalt coating and was installed in 1978. A 1987 Nassau County Public Health Ordinance Article XI Application for a Toxic or Hazardous Material Storage Facility Permit, on file at NCDOH, indicates that the tank was installed in 1976 (contrary to the previously cited list). The most recent tank tightness test results (dated September 14, 1995) are provided in Appendix C. As indicated, the tank passed the tightness test.

The 1987 Article XI Application indicates that B.O.C.E.S. also applied for registration of a secured outdoor bulk storage area. The application form indicates that the secondary containment consisted of an impervious floor/pad constructed of concrete with roof and walls. The form indicates that the maximum number of containers to be stored was 60, with a maximum volume of 55 gallons each. No specific chemicals to be stored were identified on the application form reviewed.

A Remedial Investigation (RI) report prepared in 1994 as part of a Remedial Investigation/Feasibility Study for the Grumman Aerospace Corporation Bethpage facility, on file at NCDOH, identified the "south recharge basins" (located southeast of the B.O.C.E.S. Site boundary lines) as a discharge site for treated wastewater from GAC Plant 2's Industrial

Wastewater Treatment Plant (IWTP) and non-contact cooling water. According to the RI report, treated wastewater was discharged to the recharge basins from the mid-1940's to 1981 in accordance with a State Pollutant Discharge Elimination System (SPDES) permit. In 1981 the Plant 2 IWTP was connected to the Nassau County sewer system, and since that time the south recharge basins have been permitted to receive only discharges of non-contact cooling water (regulated under a State SPDES permit) and storm water runoff.

The 1994 RI report identified the south recharge basins as a potential contaminant source area, resulting in the collection of water and sediment samples from the recharge basins during the Phase I RI. According to the RI report, water samples were analyzed for volatile organic compounds (VOCs), semivolatile organic compounds (SVOCs), pesticides and polychlorinated biphenyls (PCBs) on the Target Compound List (TCL), inorganic constituents on the Target Analyte List (TAL), pH, hexavalent chromium and asbestos, in accordance with NYSDEC ASP protocols. The RI report indicated that VOCs, SVOCs, pesticides and PCBs were not detected in water samples from the recharge basins, and with the exception of total iron, inorganic parameters were detected below standards, criteria and guidance (SCGs). Sediment samples collected from the bottom of the recharge basins were analyzed for the parameters listed above with the exception of asbestos. According to the RI report, VOCs, pesticides and PCBs were not detected above NYSDEC soil cleanup objectives in the sediment samples. However, several SVOCs and metals were detected above NYSDEC soil cleanup objectives and/or background levels. The RI report concluded that the metals and SVOCs detected "are most likely adsorbed on sediment particles and should be retained (i.e., be immobile), as evidenced by their not being detected in recharge basin water samples," and did not recommend any remedial action with respect to recharge basin sediments.

According to GAC, the discharge pipe to the westernmost receiving basin was permanently plugged in 1985. Sometime prior to 1988, backfilling of this basin was initiated. The December 12, 1995 site inspection revealed that the westernmost former receiving basin has been completely filled in, and mounds of soil were noted.

Groundwater monitoring well N-10631, located southwest of the B.O.C.E.S. Site (see Figure 2-2) was sampled for volatile organic compounds by others on January 23, 1992. No VOCs were detected above NYSDOH drinking water standards.

Groundwater monitoring wells GM-18S and GM-20S, located northwest and southeast of the site, respectively (also shown on Figure 2-2), were sampled for VOCs and inorganic parameters on August 23, 1993. VOCs were not detected above the detection limit of 10 ug/l in well GM-20S. Trichloroethene at 8 ug/l (estimated) and tetrachloroethene at 8 ug/l (estimated) were detected in well GM-18S above the NYSDOH drinking water standard of 5 ug/l for both of these compounds. Cadmium was detected in the dissolved phase (filtered) sample collected from well GM-20S at a concentration of 12.3 ug/l, which is above the NYSDOH drinking water standard of 5 ug/l. No other metals were detected in the filtered samples above the drinking water standards.

#### 4.2 State and Federal Environmental Data Base Search Review

A computer environmental data base search of state and federal record sources for the site and surrounding areas was undertaken in accordance with the ASTM minimum search radius criteria. This section presents a summary of the findings of the environmental data base search. A detailed report is presented in Appendix B. Data bases evaluated included the following:

<u>Data Base</u>	<u>Search Radius</u>
• National Priorities List (NPL)	1 1/4 mile
• CORRACTS (RCRA Corrective Actions)	1 1/4 mile
• Inactive Hazardous Waste Disposal Sites State Priorities List (SPL)	1 1/4 mile
• Resource Conservation and Recovery Act (RCRA) Hazardous Waste Treatment, Storage and Disposal (RCRA - TSD)	1 1/4 mile

<u>Data Base</u>	<u>Search Radius</u>
• Comprehensive Environmental Response, Compensation, and Liability Information System (CERCLIS) sites	3/4 mile
• Leaking Underground Storage Tanks (LUST)	3/4 mile
• Solid Waste Landfill Facilities (SWLF)	3/4 mile
• RCRA Violators/Enforcements	1/2 mile
• Toxic Release Inventory Data Base (TRIS)	1/2 mile
• State Registered Above and Underground Storage Tanks (AST and UST)	1/2 mile
• Emergency Response Notification System (ERNS), Reported Releases of Oil and Hazardous Substances	3/8 mile
• RCRA Hazardous Waste - Small and Large Quantity Generators	3/8 mile

A summary of the evaluation of each of the sites identified in the environmental data base search is presented below by data base category.

### **National Priorities List (NPL)**

The United States Environmental Protection Agency's (USEPA) NPL data base lists uncontrolled or abandoned hazardous waste sites that have been identified for priority remedial action under the federal Superfund program. The agency release date for the NPL data base was May 1995.

Ruco Polymer Corporation: The data base report has identified the Ruco Polymer facility (a.k.a. Hooker Chemical) as a National Priorities List (NPL) site.

The site has been on the federal Superfund list since 1984 and remains an active "plastics" manufacturing facility. The site has been the subject of monitoring and investigations intended to identify the extent of contamination resulting from previous waste disposal practices. Two operable units requiring remedial action were originally identified at the Hooker Chemical site.

Operable Unit 1 has necessitated the remediation of soil and groundwater contaminated by volatile organic compounds (VOCs) used in the various manufacturing processes employed by the facilities on-site. Based upon communication with the USEPA, the Remedial Investigation (RI) report was approved on December 7, 1992. The associated Feasibility Study was subsequently completed and a Record of Decision on a Proposed Remedial Action Plan was signed on January 28, 1994. Based upon recent communications with the USEPA, a unilateral administrative order has been issued and a draft work plan is currently being reviewed by the USEPA.

Operable Unit 2 pertains to a relatively small area of soil contaminated by PCBs resulting from releases of the heat transfer fluid Therminol. The migration of PCBs resulted from on-site runoff and on-site truck traffic. However, the extent of contaminated soil was contained entirely on the Ruco Polymer/Hooker Chemical Site. No off-site contamination from Operable Unit 2 was identified. Remedial action involving Operable Unit 2 has been completed.

According to USEPA, a third operable unit which involves groundwater quality off-site is now in the RI/FS stage. The RI/FS work includes installation and sampling of monitoring wells, groundwater elevation measurements and modelling work. Until the USEPA releases all details regarding Operable Units 1 and 3, and the ongoing investigation is complete, it is not possible to fully characterize the extent of potential off-site impacts resulting from the Hooker Chemical Site.

A distance of approximately 0.97 mile separates the Ruco Polymer Corporation site from the B.O.C.E.S. Site, located to the southeast. Based upon a review of water table elevations and

contour maps prepared by others, dated April and August 1993, groundwater flow direction in the vicinity of the Hooker Chemical and B.O.C.E.S. Site varies on a seasonal basis. The predominant direction of groundwater flow is to the southeast. However, on a localized basis, recharge basins and the effects of groundwater withdrawal by nearby production wells causes seasonal shifts in flow direction.

The Ruco Polymer/Hooker Chemical site was also identified on several other data bases as described below.

### **CORRACTS - RCRA Corrective Action Sites**

The USEPA's RCRA program identifies and tracks hazardous waste from the point of generation to the point of disposal. The CORRACTS data base contains a listing of facilities which are undergoing "corrective action". According to the data base report, pursuant to RCRA Section 3008(h), a "corrective action order" is issued when there has been a release of hazardous waste or constituents into the environment from a RCRA facility. The agency release date for this data base was June 1995.

Ruco Polymer Corporation: According to the data base report, the Ruco Polymer Corporation is identified on the CORRACTS data base. The data base indicates that a RCRA Facility Assessment (RFA) has been completed for the site and states "no further corrective action at this time."

Grumman Aerospace Corporation - South Oyster Bay Road: The Grumman Aerospace Corporation facility is identified on the CORRACTS data base. According to the data base report an RFA has been completed, and a RCRA Facility Investigation (RFI) has been approved. The data base report also indicates that a Correctives Measures Study (CMS) has been approved. In addition, "stabilization measures" have been implemented. Additional information on the Grumman facility is provided with the other data bases it has been identified on, described below.



## **RCRA-TSD**

As stated previously, the RCRA program identifies and tracks hazardous waste from the point of generation to the point of disposal. The TSD data base is comprised of facilities which report generation, storage, transportation, treatment or disposal of hazardous waste. The agency release date for this data base was June 1995. It should be noted that the inclusion of a facility on this data base does not imply that a facility has had any violations or releases.

**Grumman Aerospace Corporation:** The data base report lists GAC as a facility that stores and treats hazardous waste. According to the report, there is no land disposal or incineration of hazardous waste at the site. Other than small quantities of waste generated at off-site Grumman-owned and operated facilities, the Bethpage facility does not receive hazardous waste generated off-site. The data base report also indicates that GAC is a registered Hazardous Waste Generator. As a generator of hazardous waste in Nassau County, GAC is not only subject to the regulatory requirements of the NYSDEC's Hazardous Waste Management Program, but must also adhere to the very stringent management standards and design criteria addressing the overall management and storage of hazardous waste over a sole source aquifer as administered by the Nassau County Department of Health. Overall, these include secondary containment structures for any designated storage areas along with stringent record keeping and administrative controls including the use of manifests for tracking the transportation and disposal of waste.

## **State Priorities List (SPL)**

This data base is the New York State Registry of Inactive Hazardous Waste Disposal Sites and is maintained by the NYSDEC. The agency release date for the data base was July 1995.

**Ruco Polymer Corporation:** The data base report identifies the Ruco Polymer Corporation on the SPL data base. The SPL data base indicates that the facility type is "lagoon, landfill," and

that its status is “remedial action pending/in progress.” Pollutants listed are “plant waste,” “ethylhexyl and related compounds” and “ethylene substance.” As stated previously, this facility has been under active investigation and/or remedial phases pursuant to consent orders, with additional ongoing monitoring.

American Drive-in Cleaners: The American Drive-in Cleaners was identified on the SPL data base. The facility type was listed as “lagoon, landfill” with its status as “remedial action pending/in progress.” The listed pollutant was “tetrachloroethylene/TCE.” The facility is located 1.08 miles south of the B.O.C.E.S. Site, which is downgradient with respect to the predominant direction of groundwater flow and, therefore, would not be expected to have an impact on the B.O.C.E.S. Site.

Grumman Aerospace - Bethpage Facility: In the data base report, the “Grumman Aerospace - Bethpage Facility” is listed as an “unmapped site” and is identified on the SPL data base. The “unmapped” section of the data base report contains a listing of facilities whose locations cannot be positively mapped based on their reported addresses. According to information on file at Nassau County Department of Health, the Grumman Aerospace Corporation Bethpage Facility was first listed on the State’s Registry of Inactive Hazardous Waste Sites in 1983 as a Class 2a site (a temporary designation when insufficient information exists for proper classification). In 1988, a Class 2 designation was assigned to the facility. In 1992 the Bethpage facility was separated into two sites, the Naval Weapons Industrial Reserve Plant (NWIRP) site and the Grumman Aerospace Corporation Bethpage facility.

Grumman entered into a consent order with the NYSDEC to conduct an on-site and off-site Remedial Investigation/Feasibility Study (RI/FS) of the Bethpage facility. A report containing the data collected during the first phase of the RI was submitted to NYSDEC in January 1992, and a final RI report was submitted in September 1994. The RI report identified a TCE storage tank at Plant 2, located immediately to the north of the B.O.C.E.S. Site, as a source of groundwater contamination. A soil vapor extraction (SVE) system has been installed at the source area and is designed to remove TCE in unsaturated soils in that area, in order to prevent

further contamination of the groundwater. Plant 2 is located upgradient of the B.O.C.E.S. Site, with respect to groundwater flow. The RI Report indicates that groundwater sampling conducted during the Phase I and II RIs showed an eastern and western plume of contaminants near the center of the Bethpage facility. The RI indicates that the eastern plume contains trichloroethylene (TCE), tetrachloroethene (PCE), 1,1,1-trichloroethane, 1,2-dichloroethene, 1,1-dichloroethene and 1,1-dichloroethane, while the western plume consists primarily of TCE. Another area of contamination (no discrete plume) was identified at the border of the Ruco Polymer Site and Grumman property.

The B.O.C.E.S. Site is located at the southwest corner of the Grumman Aerospace Corporation property and is currently included within the facility's Inactive Hazardous Waste Site boundary lines. However, a Delisting Petition is being prepared for submission to the NYSDEC to have the B.O.C.E.S. Site removed from within the boundary lines.

Naval Weapons Industrial Reserve Plant: In the unmapped section of the data base report, the Naval Weapons Industrial Reserve Plant (NWIRP) was identified on the SPL data base. The facility type was listed as "lagoon, landfill" with its status as "remedial action pending/in progress." The pollutants listed were "trichloroethylene," "tetrachloroethene," and "trichloroethane/TCA." The B.O.C.E.S. Site is located downgradient of the NWIRP with respect to groundwater flow.

### **CERCLIS Sites**

According to the data base report, the CERCLIS data base contains sites which are either on the NPL, or are being screened and assessed for their potential inclusion on the NPL list. The agency release date for the CERCLIS data base was September 1995. The data base report also contains information on an associated CERCLIS data base called No Further Remedial Action Planned (NFRAP). This data base contains a listing of sites that may have had an initial investigation performed which found no contamination, or the contamination was removed

quickly, or the “contamination was not serious enough to require Superfund action or NPL consideration.” The agency release date of the NFRAP data base was September 1995.

Grumman Aerospace Corporation Bethpage Facility: The data base report identifies GAC on the CERCLIS data base. A call to the prepares of the data base report indicated that GAC was on the No Further Remedial Action Planned (NFRAP) data base.

Ruco Polymer Corporation: The data base report also identifies the Ruco Polymer Corporation on the CERCLIS data base. Its NPL status is listed as “currently on final NPL.”

Naval Weapons Industrial Reserve Plant: The NWIRP is identified on the CERCLIS data base in the unmapped section of the data base report. Its NPL status is listed as “not a proposed, current, or deleted NPL site”. Under site description, the data base report indicates that there are “potential hazardous waste areas at this site...generated primarily from aircraft productions”.

## LUST

The LUST data base is a compilation of reported tank test failures provided by the NYSDEC. A facility’s listing on the LUST data base does not necessarily imply that a release has been documented, but rather that investigation/monitoring is continuing on “case open” sites, as discussed below. The agency release date was June 1995.

Facilities in Nassau County, New York that have reported tank test failures and/or spills are subject to not only the federal requirements for upgrading underground storage tank systems but are also required to adhere to the stringent design, inventory control and reporting requirements of the Nassau County Department of Health. These additional requirements are in place to protect the sole source aquifer resources of the County. Overall, these include the design and implementation of secondary containment structures, leak detection, cathodic protection and rigorous inventory control and tank testing programs.

The LUST data base includes information on the remedial status of a leak or spill. According to a representative of the NYSDEC Region 1 Spill Unit, when the remedial status of a tank failure is "case closed/cleanup complete," the NYSDEC has ended their investigation, and remediation of the spill (if any) has been performed to the maximum extent possible. Based upon this information, those sites with past releases having a "case closed/cleanup complete" remedial status are not expected to be potential off-site sources of contamination.

Grumman Aerospace Corporation: The data base report identifies a number of records for the Grumman Aerospace Corporation Bethpage Facility, both in the mapped and unmapped section of the report. However, of the 11 releases reported, all but two have the remedial status "case closed/cleanup complete."

The following records concerning releases at GAC's Bethpage Facility, were reported in the data base to have "case open" remedial status with "groundwater" being the affected media:

- At GAC Plant 28, a release of No. 2 fuel oil was discovered on September 21, 1994 (NYSDEC Spill No. 94-08269). The tank failed a system tightness test. The tank in question has since been retested and passed tightness testing on January 16, 1996. According to GAC, the pipe which resulted in the original system test failure is being repaired. Based upon discussion with representatives of GAC, this tank is monitored daily for inventory purposes and there does not appear to be any product losses that are unaccounted for. Based upon review of available information regarding local groundwater flow, the B.O.C.E.S. Site is not likely to have been impacted.
- According to the data base report, a release of diesel fuel occurred at an unspecified location at the Grumman Aerospace Bethpage facility on June 29, 1993 and has a NYSDEC Spill No. of 87-07733. According to representatives of GAC, a tank at Plant 20 failed a tank test on June 29, 1993, but has a NYSDEC Spill No. of 93-04043. GAC did not have any record of a spill with the Spill No. 87-07733. According to GAC the tank in question (i.e., NYSDEC Spill No. 93-04043) was uncovered and the fill line was noted to be cracked. The tank was subsequently repaired and approximately 2 yards of soil were removed. According to GAC, remediation efforts and monitoring of groundwater is ongoing under the direction of the NYSDEC. The extent of contamination has not been determined to date; however, based upon review of available information regarding local groundwater flow, the B.O.C.E.S. Site is not likely to have been impacted.

In addition, other known releases at the GAC Bethpage Facility include:

- At GAC Plant 1, a release of an unspecified amount of No. 2 fuel oil was discovered on April 16, 1991, due to tank failure. The NYSDEC Spill No. is 92-07215. Representatives of GAC reported that this data base record concerns a 2,500 gallon waste oil tank which was removed from the Plant 1 property under NYSDEC direction along with contaminated soil. The NYSDEC was satisfied with the remedial effort.
- A release of diesel fuel due to tank failure was discovered at GAC Plant 20 on August 11, 1994. The NYSDEC Spill No. is 92-04511. A representative of GAC confirmed that the release at Plant 20 was due to a tank tightness test failure. The tank was subsequently removed in the presence of a NYSDEC representative who determined the effort to be a "clean closure."
- According to representatives of GAC, a mineral oil spill related to an equipment failure occurred at Plant 3, on March 16, 1994 (NYSDEC Spill No. 91-00911) and was subsequently remediated.
- On June 2, 1993, a release of waste oil was discovered at GAC Plant 3 due to tank failure (NYSDEC Spill No. 94-06455). Although the spill remains in the "case open" remedial status, according to Grumman Aerospace Corporation representatives, the spill concerns a tank which failed a tightness test, was subsequently repaired, and when retested passed the tightness test.

The data base report also identifies a number of other sites that have had releases or spills as follows:

Northville Gas Station: The data base report identifies the Northville Gas Station on the LUST data base. A release of gasoline occurred on September 3, 1992 due to tank failure. Groundwater was the media affected and the remedial status of the spill is "case open." However, the Northville Gas Station is located to the south of the B.O.C.E.S. Site, and is downgradient with respect to the predominant direction of groundwater flow. Therefore, it does not appear that the B.O.C.E.S. Site would be impacted.

Kanowsky Residence: The LUST data base identifies the Kanowsky residence as having had a release of No. 2 fuel oil due to tank failure on April 1, 1990. The media affected was "groundwater" and the remedial status is "case closed/cleanup complete."

Slomins Inc.: The data base report identifies Slomins on the LUST data base due to a release of No. 2 fuel oil on April 17, 1991. The release was due to tank failure, the media affected was "groundwater" and the remedial status of the release is "case closed/cleanup complete."

Zimmer Residence: According to the data base report, a release of No. 2 fuel oil affecting "soil/sand/land" was discovered on March 26, 1990. The release was due to tank failure. The remedial status of the release is "case closed/cleanup complete."

W. Simone Owner: According to the data base report a release of 1.0 gallon of No. 2 fuel oil was discovered on March 2, 1995 at 17 Ceil Place, Bethpage. The release was due to tank failure and the media affected is "soil/sand/land." The remedial status of the release is "case open." The B.O.C.E.S. Site is located to the north (upgradient) of this site, and since the release is apparently confined to "soil/sand/land," it does not appear that it would impact the B.O.C.E.S. Site.

John's South Bay Mobil: The data base report identifies the South Bay Mobil Station on the LUST data base due to a release discovered on November 11, 1993. The release of gasoline was due to tank failure, with "soil/sand/land" as the affected media. The remedial status of this release is "case closed/cleanup complete."

NYNEX Vehicle: According to the data base report a gasoline spill from a truck occurred on March 17, 1994 at Sherman and South 6th Street in Bethpage. The media affected was "soil/sand/land" and the remedial status is "case closed/cleanup complete".

Andriano Residence: The data base report identifies the Andriano residence on the LUST data base. A spill of 1 gallon of #2 fuel oil was discovered on February 23, 1993. The media affected was "soil/sand/land" and the remedial status of the release is "case closed/complete."

Louis Moore Residence: According to the data base report, a 10 gallon spill of No. 2 fuel oil affecting "soil/sand/land" was discovered at the Moore residence on July 21, 1992. The cause of the release was tank failure, and its remedial status is "case closed/cleanup complete."

Vonbevern Residence: The Vonbevern residence was identified on the LUST data base due to a release of 100 gallons of No. 2 fuel oil on March 19, 1990. The cause of the release was tank failure and the remedial status of the release is "case closed/cleanup complete."

S S Sunoco Service At the Sunoco Service Station, a spill of waste oil affecting "soil/sand/land" due to tank failure was discovered on June 2, 1989. The remedial status of the release is "case closed/ cleanup complete."

Bail Residence: The Bail residence on South 1st Street, Bethpage was on the LUST data base due to a release of No. 2 fuel oil affecting "soil/sand/land" on April 19, 1995. The remedial status is "case open". Since the release is apparently confined to "soil/sand/land," and this site is over 2/3 of a mile away, according to the data base report, it does not appear that it would impact the B.O.C.E.S. Site.

NCDPW: In the unmapped section of the data base report, the Nassau County Department of Public Works on No. Wantagh Avenue, Levittown was identified on the LUST data base. A release of diesel fuel was discovered on February 13, 1992, and the media affected was groundwater. The remedial status of the release is "case closed/cleanup complete."

Thomas Norman Residence: The LUST data base identifies the Norman residence as having had a release of No. 2 fuel oil due to tank failure on April 21, 1989. The media affected was "soil/sand/land" and the remedial status is "case closed/cleanup complete."



substance released as “unknown”, with the media affected as “groundwater”. Based upon communication with the NYSDEC Spill Unit, the substance was chlorinated water from the facility’s swimming pool. The remedial status of the release is “case closed/cleanup complete”.

### **RCRA Violators/Enforcements**

As stated previously, the RCRA program identifies and tracks hazardous waste from the point of generation to the point of disposal. The RCRA facilities data base is comprised of facilities which report generation, storage, transportation, treatment or disposal of hazardous waste. According to the data base report, facilities listed on the RCRA violators data base have been cited for RCRA violations at least one time since 1980. RCRA enforcements are actions taken against RCRA violators. The agency release date for the RCRA Violators/Enforcements data base was June 1995.

According to the data base report, the Eagels Nest site on Central Avenue, Bethpage, was identified on the RCRA Small Quantity Generators data base and the RCRA violators data base. According to the report, the violation type was “generator...other requirement” and the violation occurred April 1, 1994. A compliance order was given July 29, 1994 and a penalty assessed. The actual compliance date was not reported in the data base. This site is located approximately 1/3 of a mile to the southeast (i.e., downgradient) of the B.O.C.E.S. Site.

No other RCRA violators were identified within the search radius (i.e., 1/2 mile).

### **Toxic Release Inventory System Data Base**

The USEPA’s Toxic Release Inventory System (TRIS) is a data base established under Section 313 of the Emergency Planning and Community Right-to-Know Act (EPCRA or SARA Title III) of 1986, which requires certain facilities to complete a Toxic Chemical Release Form (Form R) for specified chemicals. The agency release date for this data base was May 1995.

No sites were identified on the TRIS data base within the search radius of 1/2 mile of the B.O.C.E.S. Site, however, the data base identified the Ruco Polymer/Hooker Chemical site (located 0.97 miles to the northwest) on this database. In addition, the Grumman Bethpage Facility is subject to the provisions of EPCRA/SARA Title III.

### **USTs and ASTs**

Two data bases are utilized to identify sites that have registered above and below ground storage tanks. The Nassau County Department of Health maintains an Article XI "In Service" Tank Data Base of ASTs and USTs. The agency release date of the NCDOH data base was April 1995. In addition, the NYSDEC's Petroleum Bulk Storage Program maintains information on petroleum bulk storage tanks, hazardous substance bulk storage tanks and major petroleum storage facilities. The agency release date for the NYSDEC data base was June 1995.

USTs located in Nassau County, New York, are subject not only to the federal and state requirements for underground storage tank systems but are also required to adhere to the stringent design, inventory control and reporting requirements of the Nassau County Department of Health. These additional requirements are in place to protect the sole source aquifer resources of the County. Overall, these include the design and implementation of secondary containment structures, leak detection, cathodic protection and rigorous inventory control and tank testing programs.

It is important to note that all facilities with registered USTs that have had documented releases are identified on the LUST data base described previously. According to the data base report, within a 1/2 mile radius of the B.O.C.E.S. Site, there are six mapped sites with registered ASTs or USTs.

## ERNS

ERNS is a national data base containing information on reported releases of oil and hazardous substances. Spill information is reported to a variety of governmental agencies including the USEPA, the Coast Guard, the National Response Center and the Department of Transportation. The March 1995 agency release date report contains information on reported releases for the time period October 1986 through September 1994. No sites were identified on the ERNS data base within the search radius (i.e., 3/8 of a mile).

## RCRA - Hazardous Waste Large and Small Quantity Generators

As mentioned above, the USEPA's RCRA program identifies and tracks hazardous waste from the point of generation to the point of disposal. Facilities which report generation, storage, transportation, treatment or disposal of hazardous waste are identified on the RCRA facilities data base. The agency release date was June 1995. Facilities are identified as Large Quantity Generators if they generate at least 1000 kg per month of non-acutely hazardous waste (or 1 kg per month of acutely hazardous waste). Facilities which generate less than 1000 kg per month of non-acutely hazardous waste and greater than 100 kg are identified as RCRA Small Quantity Generators.

It should be noted that generators of hazardous waste in Nassau County are not only subject to the regulatory requirements of the NYSDEC's Hazardous Waste Management Program, but must also adhere to the very stringent management standards and design criteria addressing the overall management and storage of hazardous waste over a sole source aquifer as administered by the Nassau County Department of Health. Overall, these include secondary containment structures for any designated storage areas along with stringent record keeping and administrative controls including the use of manifests for tracking the transportation and disposal of waste. It is important to note that the inclusion of a facility on this data base does not imply that there has been any violations or releases.

The B.O.C.E.S. Site is identified on the RCRA database as a Small Quantity Generator.

The Grumman Aerospace Corporation facility and the Ruco Polymer/Hooker Chemical Corporation are on the RCRA-Hazardous Waste Large and Small Quantity Generators data base. Within 3/8 of a mile on the site, thirteen other RCRA Large and Small Quantity Generators including the Eagles Nest site described previously, have been identified.

# Section 5



## **5.0 FINDINGS**

This section presents the findings of the Phase I Site Assessment and focuses on potential areas of environmental concern.

### **5.1 On-Site Indicators of Contamination**

No indicators of contamination were noted during the site inspections conducted on December 4 and 12, 1995.

### **5.2 Potential Areas of Environmental Concern**

Based upon the findings of the Phase I Site Assessment, potential areas of environmental concern include the following:

- Former sanitary disposal system
- Drum storage area adjacent to chemical storage shed
- Groundwater quality

Following is a discussion of each of these areas.

#### Former Sanitary Disposal System

Based upon a review of available information, a sanitary disposal system was utilized on-site prior to connection to the Nassau County sewer system in 1977. The system includes four abandoned leaching pools. This system would have received all wastewater discharges from the school activities during the time of its use and therefore is a potential area of environmental concern.

### Drum Storage Area Adjacent to Chemical Storage Shed

An exterior chemical storage shed was constructed on the property by B.O.C.E.S. personnel to house various chemicals such as hydraulic oils, paints, paint thinners, toluene and methyl ethyl ketone associated with aircraft maintenance. The condition of the floor of the shed could not be directly observed during the site inspection. Three 55-gallon drums were noted to be stored, unprotected on the asphalt, adjacent to the storage shed during the site inspections. Therefore, the drum storage area adjacent to the chemical storage shed is a potential area of environmental concern.

### Groundwater Quality

Based upon a review of available information, the site and surrounding areas have historically been associated with industrial activity. Degradation of groundwater quality in the area has been documented and is an environmental concern. However, presently there is no groundwater quality information available specifically for the B.O.C.E.S. Site. Therefore, groundwater quality is a potential area of environmental concern.

### **5.3 Potential Off-Site Sources of Contamination**

As discussed above, the extent of off-site contamination from the Ruco Polymer/Hooker Chemical Site has not been completely characterized. In addition, the B.O.C.E.S. Site is located downgradient of the NWIRP and adjacent to former and existing receiving and recharge basins. Each of these areas represent potential off-site sources of contamination.

Also as discussed above, a TCE tank at Plant 2 was identified during the Remedial Investigation of the Bethpage Facility as a source of groundwater contamination. A soil vapor extraction system has been installed at the source area and is designed to remove TCE in unsaturated soils in that area in order to prevent further contamination of the groundwater. Plant

2 is located north and upgradient of the B.O.C.E.S. Site. Therefore, this area is a potential off-site source of contamination.



# Section 6

## 6.0 RECOMMENDATIONS

This section provides recommendations for additional investigatory activities as part of a Phase II Site Assessment based on the findings of the Phase I Site Assessment.

The Phase I Site Assessment identified the following potential areas of environmental concern:

- Former Sanitary Disposal System
- Drum Storage Area Adjacent to the Chemical Storage Shed
- Groundwater Quality

### Former Sanitary Disposal System

As discussed in Section 5.2, the former sanitary disposal system received wastewater generated at the school prior to connection to the Nassau County sewer system in 1977. Constituents of concern historically utilized at the school may have been discharged to this system, and therefore, it remains a potential area of environmental concern. It is recommended that two soil borings be installed within the general boundaries of the abandoned leaching field/septic system. These borings should be augured to a depth of approximately 12 feet without split spoon sampling. The borings will then be advanced from 12 feet to a depth of approximately 22 feet with continuous split spoon sampling. Field observations and measurements will determine if further split spoon samples are required and which samples will be collected for laboratory analysis. Laboratory analysis of one soil sample from each boring for priority pollutant metals (Method 6010), volatile organic compounds (Method 8240) and semivolatile organic compounds (Method 8270) is recommended.

### Drum Storage Area Adjacent to the Chemical Storage Shed

As discussed in Section 5.2 the chemical storage shed was constructed by B.O.C.E.S. personnel and has been utilized for storage of various chemicals related to aviation maintenance. Three 55-gallon drums were noted to be stored, unprotected on the asphalt, next to the storage shed. Therefore, it is recommended that one soil boring be installed adjacent to the shed. The boring should be augured to a depth of 8 feet with continuous split spoon sampling. Visual characterization and the use of portable field instrumentation will determine which split spoon samples will be collected for laboratory analysis. Laboratory analysis of one soil sample for priority pollutant metals (Method 6010), volatile organic compounds (Method 8240) and semivolatile organic compounds (Method 8270) is recommended.

### Groundwater Quality

As discussed in Section 5.2, the site and surrounding areas have historically been associated with industrial activity, and degradation of groundwater quality in the area has been documented as an environmental concern. However, there are no monitoring wells located immediately upgradient of the B.O.C.E.S. Site, and there is only one existing downgradient well (10631) installed by the USGS. Therefore, in order to characterize groundwater quality at the site, it is recommended that two groundwater monitoring wells be installed along the northern boundary line of the site, and two monitoring wells be installed downgradient of the site.

We recommend the installation of 2-inch diameter wells to a depth of approximately 65 feet including a 15-foot section of PVC screen. The actual depth of screen placement will be determined based on field conditions. We also recommend that the borings be advanced utilizing a 4-1/4 inch hollow stem auger with continuous split spoon sampling from surface to a depth of 10 feet and from that point on every 5 feet. Visual characterization and the use of portable field instrumentation will aid in determining which soil samples will be selected for laboratory analysis. We recommend that one soil sample be selected from each monitoring well borehole for laboratory analysis of total petroleum hydrocarbons (TPHCs) and volatile organic compounds

using Methods 418.1 and 8240, respectively. In addition, if elevated levels of TPHCs are detected, we recommend that provision be made for laboratory analysis of those soil samples for fuel-related constituents using Method 310.13 and PCBs using Method 8080.

In addition, laboratory analysis of groundwater samples for priority pollutant metals, volatile organic compounds and semivolatile organic compounds utilizing USEPA SW846 Test Methods 6010, 8240 and 8270, respectively, is recommended. It is also recommended that the existing USGS well (10631) be located, and if possible, sampled for laboratory analysis of the same parameters.

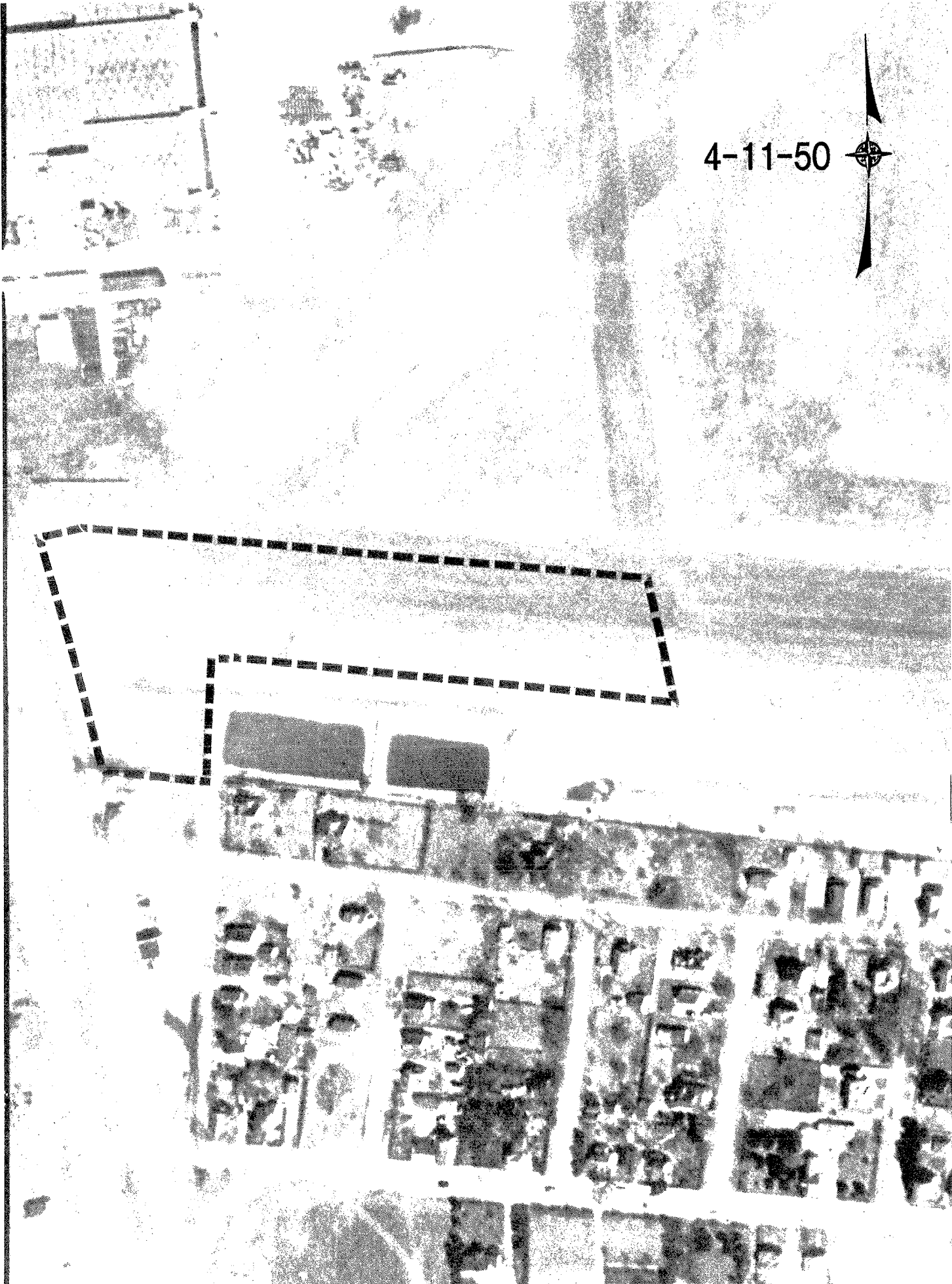
# Appendix A

**APPENDIX A**

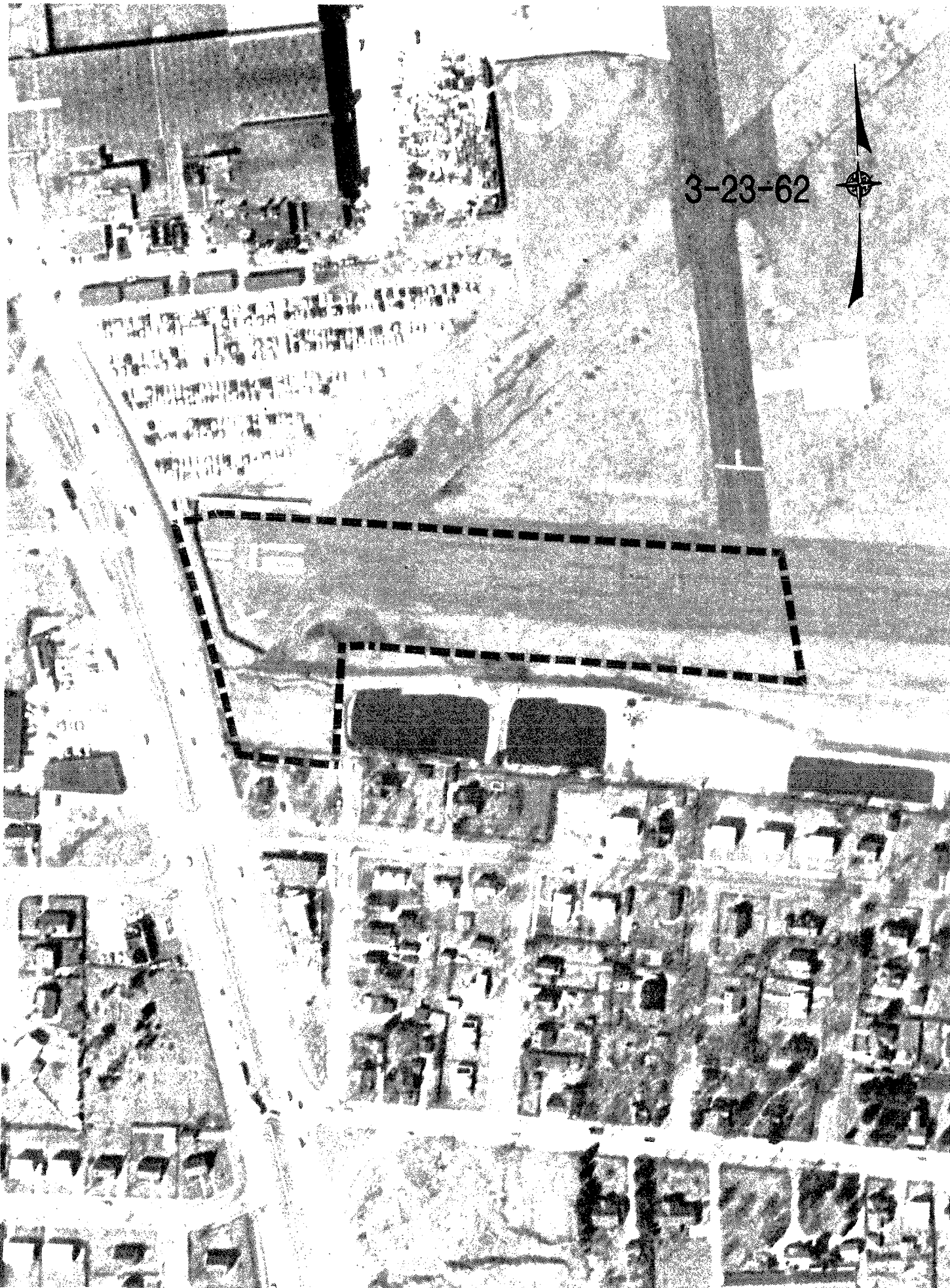
**AERIAL PHOTOGRAPHS**

♣1167\E0205601

4-11-50



3-23-62



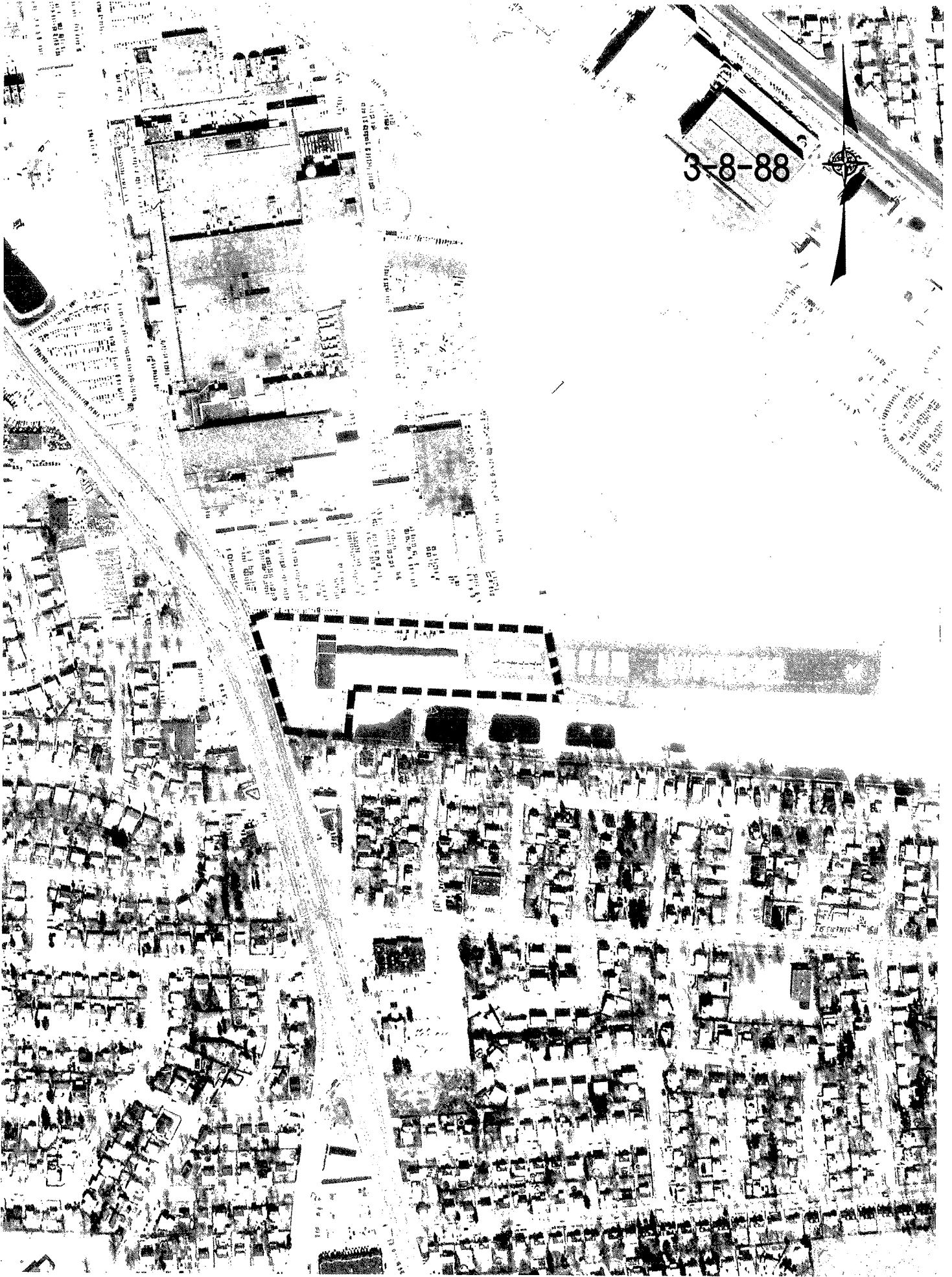




4-11-69







# Appendix B



**APPENDIX B**

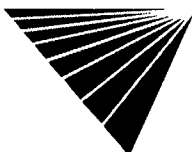
**ENVIRONMENTAL DATA BASE SEARCH**

▲1167\E0205601

# SITE ASSESSMENT PLUS REPORT (EXTENDED BY 1/4 MILE)

PROPERTY INFORMATION	CLIENT INFORMATION
Project Name/Ref #: GRUMMAN B.O.C.E.S. BUILDING 610 HICKSVILLE RD BETHPAGE, NY 11714 Cross Street: HARRISON AVE Latitude/Longitude: ( 40.741300, 73.495706 )	CLAIRE WERNER DVIRKA BARTILUCCI-SYOSSET 6800 JERICHO TPKE SYOSSET, NY 11791

Site Distribution Summary	<i>within 3/8 mile</i>	<i>3/8 to 1/2 mile</i>	<i>1/2 to 3/4 mile</i>	<i>3/4 to 1 1/4 miles</i>
<b>Agency / Database - Type of Records</b>				
<b>A) Databases searched to 1 1/4 miles:</b>				
US EPA NPL National Priority List	0	0	0	1
US EPA CORRACTS RCRA Corrective Actions	0	0	0	2
US EPA TSD RCRA permitted treatment, storage, disposal facilities	0	0	0	1
STATE SPL State equivalent priority list	0	0	0	2
<b>B) Databases searched to 3/4 mile:</b>				
US EPA CERCLIS Sites under review by US EPA	0	0	0	-
STATE REG LUST CO Leaking Underground Storage Tanks	4	1	10	-
STATE/REG/CO SWLF Permitted as solid waste landfills, incinerators, or transfer stations	0	0	0	-
<b>C) Databases searched to 1/2 mile:</b>				
US EPA RCRA Viol RCRA violations/enforcement actions	1	0	-	-
US EPA TRIS Toxic Release Inventory database	0	0	-	-
STATE UST/AST Registered underground or aboveground storage tanks	6	0	-	-
<b>D) Databases searched to 3/8 mile:</b>				
US EPA ERNS Emergency Response Notification System of spills	0	-	-	-
US EPA GNRTR RCRA registered small or large generators of hazardous waste	14	-	-	-



For more information call VISTA Information Solutions, Inc. at 1 - 800 - 767 - 0403.

Report ID: 088928-002

Date of Report: November 7, 1995

Version 2.4

Page #1

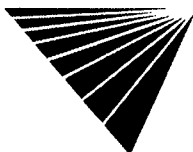
This geographic database search meets the American Society for Testing Materials (ASTM) standards for a government records review. A (-) indicates the search distance exceeds ASTM search parameters.

**LIMITATION OF LIABILITY**

Customer proceeds at its own risk in choosing to rely on VISTA services, in whole or in part, prior to proceeding with any transaction. VISTA cannot be an insurer of the accuracy of the information, errors occurring in conversion of data, or for customer's use of data. VISTA and its affiliated companies, officers, agents, employees and independent contractors cannot be held liable for accuracy, storage, delivery, loss or expense suffered by customer resulting directly or indirectly from any information provided by VISTA.

**NOTES**

[Lined area for notes]



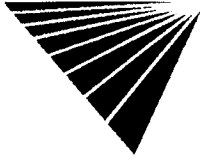
For more information call VISTA Information Solutions, Inc. at 1 - 800 - 767 - 0403.

Report ID: 088928-002

Date of Report: November 7, 1995

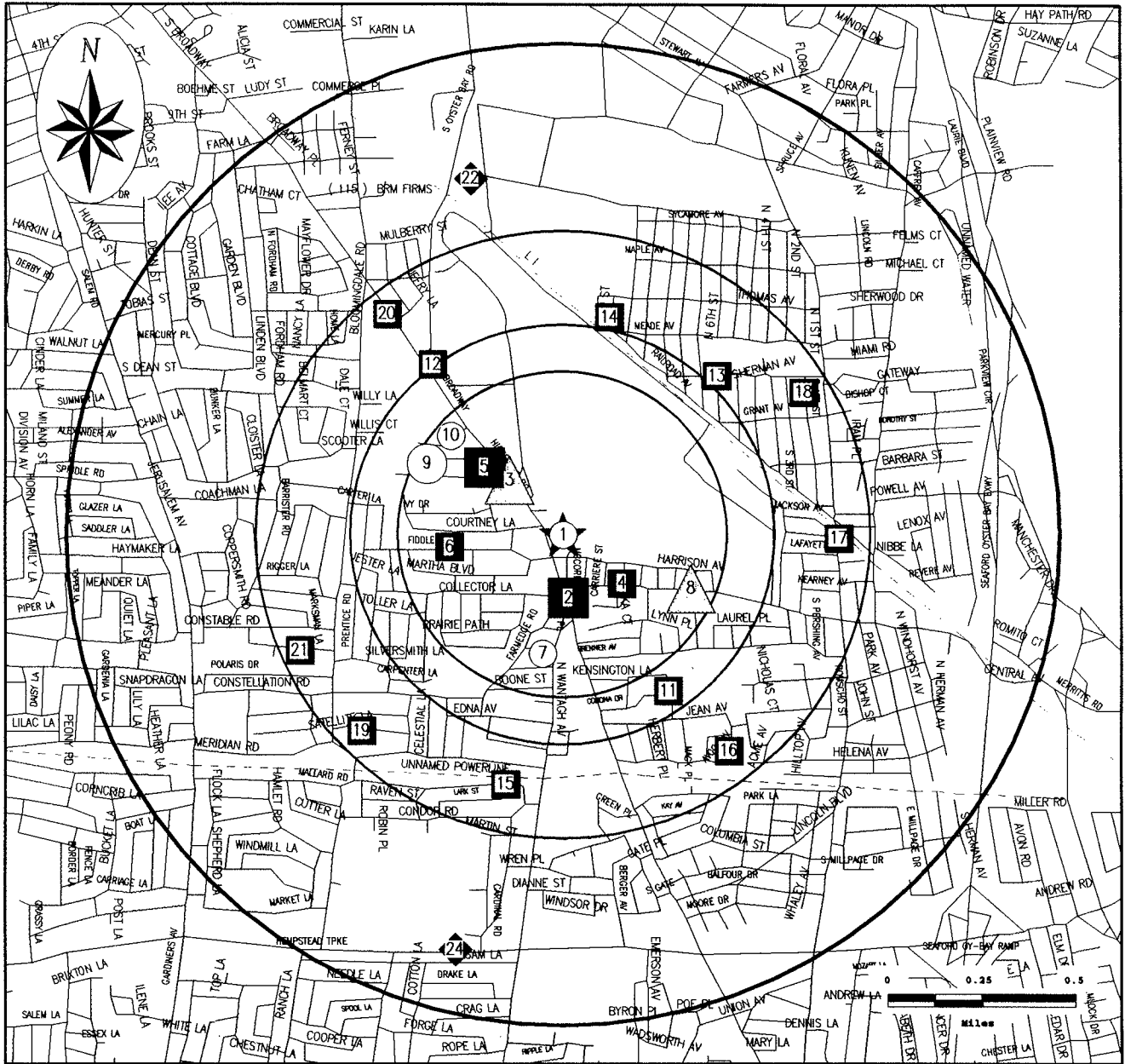
Version 2.4

Page #2



# SITE ASSESSMENT PLUS REPORT (EXTENDED BY 1/4 MILE)

## Map of Sites within One and One-Quarter Miles



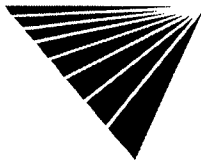
Subject Site	Category:	A	B	C	D
★	Databases Searched to:	1 1/4 mi.	3/4 mi.	1/2 mi.	3/8 mi.
	Single Sites	◆	■	▲	○
	Multiple Sites	◆◆	■■	▲▲	○○
Roads Highways Railroads Rivers or Water Bodies Utilities		NPL, SPL, SCL, TSD, CORRACTS	CERCLIS, LUST, SWLF	RCRA VIOL, TRIS, UST	ERNS, GENERATORS

For More Information Call VISTA Information Solutions, Inc. at 1 - 800 - 767 - 0403

Report ID: 088928-002

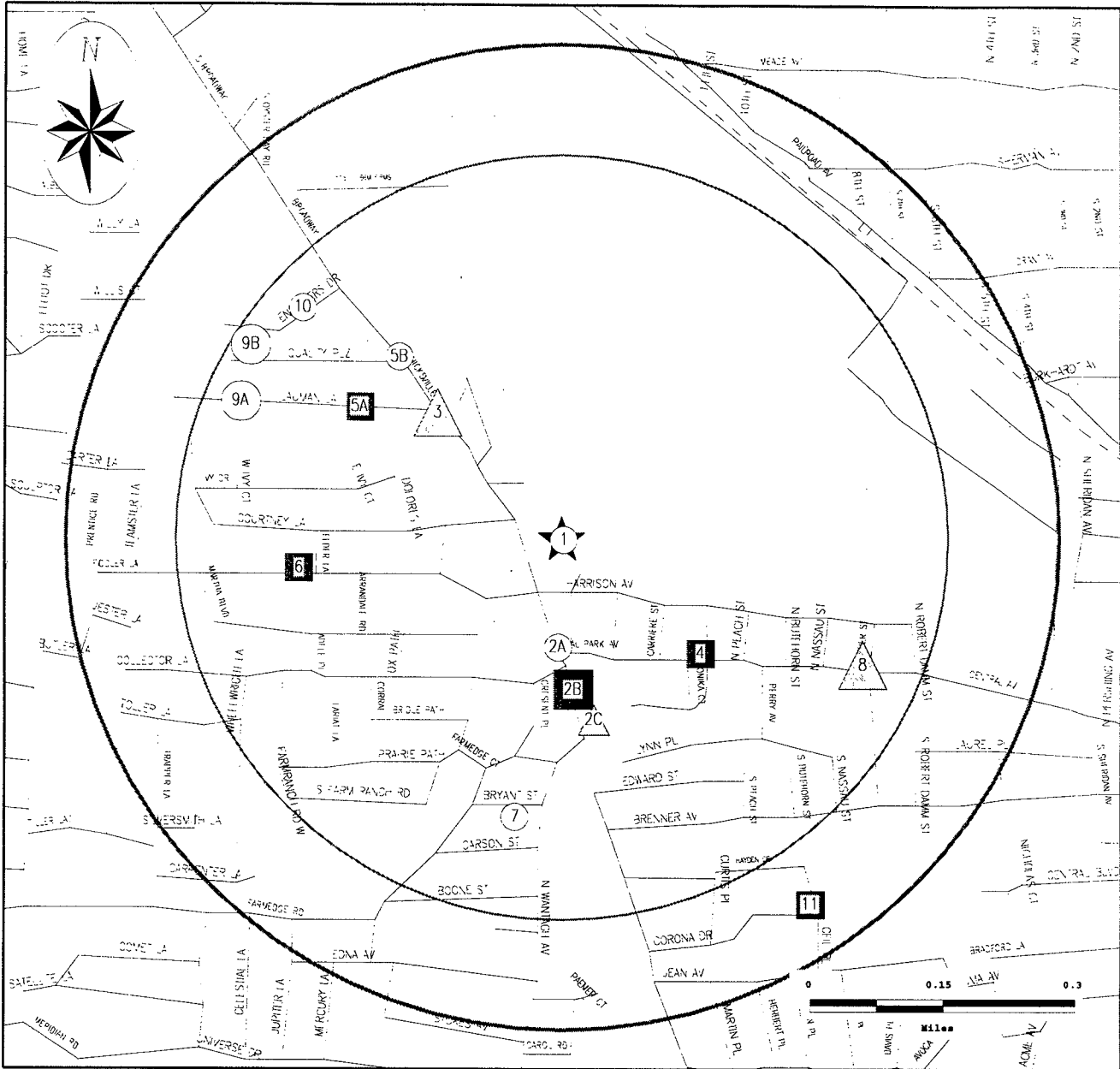
Date of Report: November 7, 1995  
Page #3





# SITE ASSESSMENT PLUS REPORT (EXTENDED BY 1/4 MILE)

## Map of Sites within Half Mile

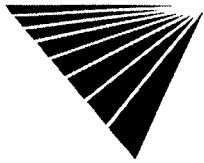


Subject Site	Category:	A	B	C	D
★	Databases Searched to:	1 1/4 mi.	3/4 mi.	1/2 mi.	3/8 mi.
	Single Sites	◆	■	△	○
	Multiple Sites	◆◆	■■	△△	○○
— — — — —	Roads	NPL, SPL, SCL, TSD, CORRACTS	CERCLIS, LUST, SWLF	RCRA VIOL, TRIS, UST	ERNS, GENERATORS
— — — — —	Highways				
— — — — —	Railroads				
— — — — —	Rivers or Water Bodies				
— — — — —	Utilities				

For More Information Call VISTA Information Solutions, Inc. at 1 - 800 - 767 - 0403

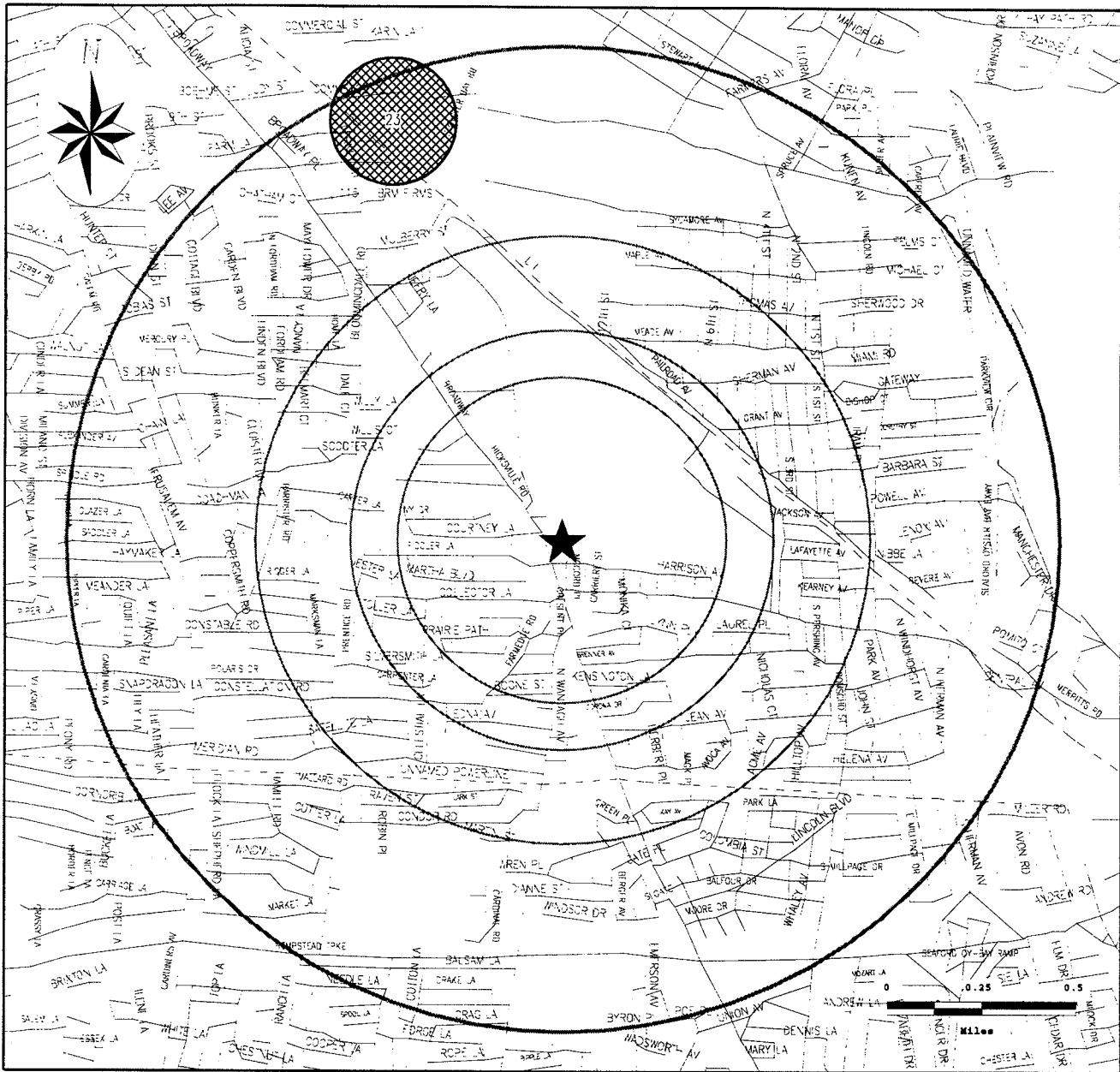
Report ID: 088928-002

Date of Report: November 7, 1995  
Page #4



# SITE ASSESSMENT PLUS REPORT (EXTENDED BY 1/4 MILE)

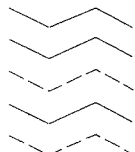
## Sites Represented as Radius Buffers



These radii are estimated from agency records or detailed street maps. The radii may be based on the furthest boundary of each property or study area from its center. For more information contact the agency referenced by source number in the site listing.



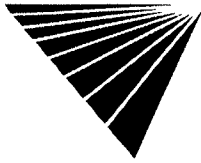
Subject Site



Roads  
Highways  
Railroads  
Rivers or Water Bodies  
Utilities

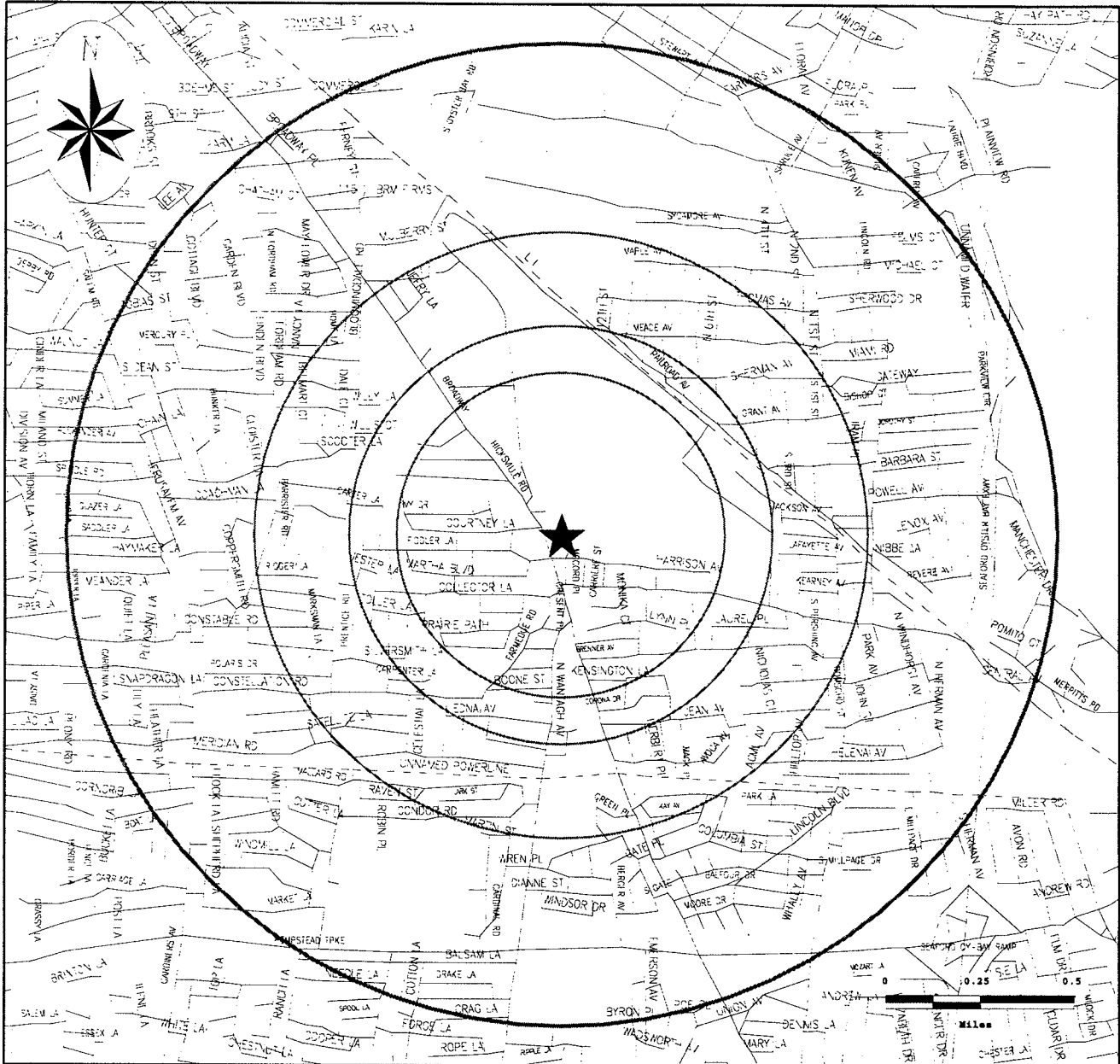
For More Information Call VISTA Information Solutions, Inc. at 1 - 800 - 767 - 0403  
Report ID: 088928-002

Date of Report: November 7, 1995  
Page #5



# SITE ASSESSMENT PLUS REPORT (EXTENDED BY 1/4 MILE)

## Street Map



Subject Site



— Roads, Highways, Rivers, Water Bodies

- - - Railroads, Utilities

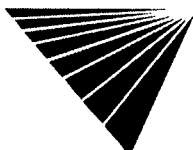
For More Information Call VISTA Information Solutions, Inc. at 1 - 800 - 767 - 0403  
Report ID: 088928-002

Date of Report: November 7, 1995  
Page #6

# SITE ASSESSMENT PLUS REPORT (EXTENDED BY 1/4 MILE)

## SITE INVENTORY

MAP ID	PROPERTY AND THE ADJACENT AREA (within 3/8 mile)	VISTA ID DISTANCE DIRECTION	A			B			C		D		
			NPL	CORTRACTS	TSD	SPL	CERCLIS	LUST	SWLF	RCRA VIOL	TRIS	UST/AST	ERNS
1	BOCES NASSAU TECH BETHPAGE AVE 610 HICKSVILLE RD BETHPAGE, NY 11714	52407 0.00 MI ADJACENT											X
2A	BETHVIEW WHEEL ALIGNMENT, INC. HICKSVILLE RD. CENTRAL AVE. BETHPAGE, NY 11714	46298 0.0 MI S											X
2B	COHEN LARRY DDS 190 HICKSVILLE RD BETHPAGE, NY 11714	3694571 0.11 MI S											X
2B	THIS OLD GARAGE 12 HICKSVILLE RD BETHPAGE, NY 11714	4874660 0.11 MI S											X
2B	NORTHVILLE GAS STATION RTE 107 WANTAGH AVENUE BETHPAGE, NY 11714	3508165 0.12 MI S					X						
2C	SUNOCO SERVICE STATION 100 HICKSVILLE RD BETHPAGE, NY 11714	407273 0.15 MI S								X			X
3	SLOMINS INC. 75 LAUMAN LANE HICKSVILLE, NY 11801	1527026 0.13 MI NW								X			
3	GRECO BROS. BULK TERMINAL LAUMAN LANE HICKSVILLE, NY	5362015 0.14 MI NW								X			
3	GRECO BROS. BULK TERMINAL LAUMAN LA HICKSVILLE RD. HICKSVILLE, NY	1276421 0.14 MI NW								X			
4	KANOWSKY RESIDENCE 556 CENTRAL AVENUE BETHPAGE, NY 11714	2716052 0.14 MI SE					X						
5A	SLOMINS INC 125 LAUMAN LANE HICKSVILLE, NY 11801	383950 0.21 MI NW					X			X			X
5B	AMERICAN LITHOTECH 631 HICKSVILLE ROAD BETHPAGE, NY 11714	19413 0.21 MI NW											X
6	ZIMMER RESIDENCE 3609 FIDDLER LANE BETHPAGE, NY 11714	1134799 0.24 MI W					X						
7	TAHOE CLEANERS 436 N WANTAUGH AVE BETHPAGE, NY 11714	416735 0.26 MI S											X



X = search criteria; • = tag-along (beyond search criteria).

For more information call VISTA Information Solutions, Inc. at 1 - 800 - 767 - 0403.

Report ID: 088928-002

Date of Report: November 7, 1995

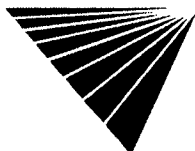
Version 2.4

Page #7

MAP ID	PROPERTY AND THE ADJACENT AREA (within 3/8 mile)	VISTA ID DISTANCE DIRECTION	A			B			C			D	
			NPL	CORRACTS	TSD	SPL	CERCLIS	LUST	SWLF	RCRA VIOL	TRIS	UST/AST	ERNS
8	EAGLES NEST 500 CENTRAL AVE. BETHPAGE, NY 11714	5361415 0.31 MI E									X		
8	EAGEL NEST 500 CENTRAL AVE BETHPAGE, NY 11714	3084742 0.31 MI E							X				X
9A	PHOENIX LABORATORIES INC 175 LAUMAN LANE HICKSVILLE, NY 11801	329488 0.33 MI W											X
9A	PROGRESSIVE CIRCUITS INC 180-R LAUMAN LN HICKSVILLE, NY 11801	1271331 0.34 MI W											X
9B	ABSOLUTE PHOTO INC 184 QUALITY PLAZA HICKSVILLE, NY 11801	3531 0.34 MI NW											X
9B	HICKSVILLE POST OFFICE 260 ENGINEERS DRIVE HICKSVILLE, NY 11801	194617 0.37 MI NW											X
10	RENAISSANCE DESIGN BUILDING INC 91 ENGINEERS DR HICKSVILLE, NY 11801	4874565 0.33 MI NW											X

MAP ID	SITES IN THE SURROUNDING AREA (within 3/8 - 1/2 mile)	VISTA ID DISTANCE DIRECTION	A			B			C			D	
			NPL	CORRACTS	TSD	SPL	CERCLIS	LUST	SWLF	RCRA VIOL	TRIS	UST/AST	ERNS
11	WILLIAM SIMONE OWNER 17 CEIL PLACE BETHPAGE, NY 11714	5417281 0.44 MI SE					X						

MAP ID	SITES IN THE SURROUNDING AREA (within 1/2 - 3/4 mile)	VISTA ID DISTANCE DIRECTION	A			B			C			D	
			NPL	CORRACTS	TSD	SPL	CERCLIS	LUST	SWLF	RCRA VIOL	TRIS	UST/AST	ERNS
12	JOHNS SOUTH BAY MOBIL 755 S OYSTER BAY RD BETHPAGE, NY 11714	127057 0.50 MI NW					X				•		•
13	NYNEX VEHICLE SHERMAN AVE/SO 6TH STREET BETHPAGE, NY 11714	5162244 0.53 MI NE					X						
14	AL ANDRIANO RESIDENCE 159 12TH STREET BETHPAGE, NY 11714	3911181 0.53 MI N					X						
15	LOUIS MOORE RESIDENCE 3715 LARK STREET LEVITTOWN, NY 11756	3505837 0.62 MI S					X						



X = search criteria; • = tag-along (beyond search criteria).

For more information call VISTA Information Solutions, Inc. at 1 - 800 - 767 - 0403.

Report ID: 088928-002

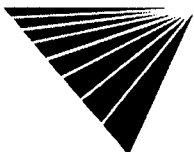
Date of Report: November 7, 1995

Version 2.4

Page #8

MAP ID	SITES IN THE SURROUNDING AREA (within 1/2 - 3/4 mile)	VISTA ID DISTANCE DIRECTION	A			B			C		D		
			NPL	CORRACTS	TSD	SPL	CERCLIS	LUST	SWLF	RCRA VIOL	TRIS	UST/AST	ERNS
16	VONBEVERN RESIDENCE 4060 AVOCA BETHPAGE, NY 11714	2712255 0.66 MI SE					X						
17	S S SUNOCO SERVICE 489 STEWART AVE BETHPAGE, NY 11714	408411 0.67 MI E					X						.
18	JAMES BAIL RESIDENCE 127 SOUTH 1ST ST BETHPAGE, NY 11714	5415574 0.68 MI NE					X						
19	THOMAS NORMAN RESIDENCE 14 SATELLITE LANE LEVITTOWN, NY 11756	1126090 0.68 MI SW					X						
20	AVIS CAR RENTAL 980 SOUTH BROADWAY BETHPAGE, NY 11714	1118893 0.68 MI NW					X						
21	GOLDENSOHN RESIDENCE 35 STEVEDORE LANE LEVITTOWN, NY 11756	1134758 0.70 MI W					X						

MAP ID	SITES IN THE SURROUNDING AREA (within 3/4 - 1 1/4 miles)	VISTA ID DISTANCE DIRECTION	A			B			C		D		
			NPL	CORRACTS	TSD	SPL	CERCLIS	LUST	SWLF	RCRA VIOL	TRIS	UST/AST	ERNS
22	GRUMMAN AEROSPACE CORP SOUTH OYSTER BAY RD BETHPAGE, NY 11714	3624600 0.92 MI N		X	X		.	.			.		.
23	RUCO POLYMER CORPORATION NEW SOUTH ROAD HICKSVILLE, NY 11801	362950 0.97 MI NW	X	X		X	.	.		.	.		.
24	AMERICAN DRIVE-IN CLEANERS 3801 HEMPSTEAD TURNPIKE HEMPSTEAD, NY 11552	3505357 1.08 MI S				X					.		



X = search criteria; . = tag-along (beyond search criteria).

For more information call VISTA Information Solutions, Inc. at 1 - 800 - 767 - 0403.

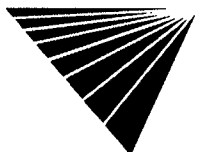
Report ID: 088928-002

Date of Report: November 7, 1995

Version 2.4

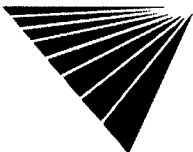
Page #9

UNMAPPED SITES	VISTA ID	A			B		C		D			
		NPL	CORRACTS	TSD	SPL	CERCLIS	LUST	SWLF	RCRA VIOL	TRIS	UST/AST	ERNS
NCDPW NO WANTAGH AVENUE LEVITTOWN, NY 11756	2739735					X						
EAST BROADWAY SCHOOL SEAMAN NECK RD. LEVITTOWN, NY 11756	5362717								X			
STERNS BROADWAY MALL HICKSVILLE, NY 11801	5538854											X
BETHPAGE SCH.BUS GARAGE BROADWAY BETHPAGE, NY 11714	5361191								X			
JOHN F. KENNEDY JR. HIGH BROADWAY BETHPAGE, NY 11714	5361192								X			
NAVAL WEAPONS IND. RESERVE PLANT STEWART AVENUE BETHPAGE, NY 11714	4123188				X							
TOWN OF OYSTER BAY STEWART AVE BETHPAGE, NY 11714	5321334					X						
GRUMMAN AEROSPACE CORPORATION MAIL STOP:D08-GHQ BETHPAGE, NY 11714	4119416								X			
LAUREL LANE SCHOOL LAUREL LANE LEVITTOWN, NY 11756	5362043								X			
LEE AVENUE SCHOOL 7TH STREET HICKSVILLE, NY	5361026								X			
NAVAL WEAPONS INDUSTRIAL RESERVE PLA SOUTH OYSTER BAY ROAD BETHPAGE, NY 11714	3624601					X						
GRUMMAN AEROSPACE GRUMMAN AEROSPACE BETHPAGE, NY 11714	1337762						X					
JERICHO JEWISH CENTER NORTH BROADWAY HICKSVILLE, NY	1522341						X					
BETHPAGE COMM PARK STEWART AVENUE BETHPAGE, NY 11714	46284						X					
STEVEN KAROPCZYC SCHL FARMEDGE ROAD LEVITTOWN, NY 11756	5361616								X			
GRUMMAN AEROSPACE-BETHPAGE FACILITY STEWART AVENUE BETHPAGE, NY 11714	2495698				X							
GRUMMAN AEROSPACE BUILDING 116-01-1 BETHPAGE, NY 11714	4111065						X					



**X = search criteria; • = tag-along (beyond search criteria).**  
 For more information call VISTA Information Solutions, Inc. at 1 - 800 - 767 - 0403.  
 Report ID: 088928-002 Date of Report: November 7, 1995  
 Version 2.4 Page #10

UNMAPPED SITES	VISTA ID	A			B		C		D				
		NPL	CORRACTS	TSD	SPL	CERCLIS	LUST	SWLF	RCRA VIOL	TRIS	UST/AST	ERNS	GNRTR
GRUMMAN AEROSPACE BUILDING #2 GRUMMAN BETHPAGE, NY 11714	4111070					X							
GRUMMAN AEROSPACE BUILDING #1 BETHPAGE, NY 11714	4111071					X							
GRUMMAN AEROSPACE BLDG 115 BETHPAGE, NY 11714	4111072					X							
GRUMMAN GRUMMAN PLANT #17 BETHPAGE, NY 11714	2720226					X							
GRUMMAN AEROSPACE BUILDING 04-01-1 BETHPAGE, NY 11714	4111074					X							
GRUMMAN BLDG #15 BETHPAGE, NY 11714	4111075					X							
GRUMMAN AEROSPACE BLDG 28 BETHPAGE, NY 11714	5308133					X							
GRUMMAN AEROSPACE GRUMMAN FACILITY BLDG 1 BETHPAGE, NY 11714	2720231					X							
AGO ASSOCIATES , NY	5619437						X						
CENTRAL BLVD. SCHOOL CENTRAL AVENUE BETHPAGE, NY 11714	5361401									X			
GRUMMAN AEROSPACE BLDG 111 BETHPAGE, NY 11714	4111064					X							



X = search criteria; • = tag-along (beyond search criteria).

For more information call VISTA Information Solutions, Inc. at 1 - 800 - 767 - 0403.

Report ID: 088928-002

Date of Report: November 7, 1995

Version 2.4

Page #11

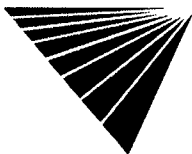


# SITE ASSESSMENT PLUS REPORT (EXTENDED BY 1/4 MILE)

## DETAILS

### PROPERTY AND THE ADJACENT AREA (within 3/8 mile)

<b>VISTA Address*:</b>	<b>BOCES NASSAU TECH BETHPAGE AVE 610 HICKSVILLE RD BETHPAGE, NY 11714</b>	<b>VISTA ID#:</b>	52407	<b>Map ID</b>
		<b>Distance/Direction:</b>	0.00 MI / ADJACENT	<b>1</b>
		<b>Plotted as:</b>	Point	
<b>RCRA-SmGen - RCRA-Small Generator / SRC# 2465</b>		<b>EPA ID:</b>	NYD136581915	
<b>Agency Address:</b>		SAME AS ABOVE		
<b>Generator Class:</b>		GENERATORS WHO GENERATE 100 KG./MONTH BUT LESS THAN 1000 KG./MONTH OF NON-ACUTELY HAZARDOUS WASTE		
<b>VISTA Address*:</b>	<b>BETHVIEW WHEEL ALIGNMENT, INC. HICKSVILLE RD. CENTRAL AVE. BETHPAGE, NY 11714</b>	<b>VISTA ID#:</b>	46298	<b>Map ID</b>
		<b>Distance/Direction:</b>	0.0 MI / S	<b>2A</b>
		<b>Plotted as:</b>	Point	
<b>RCRA-LgGen - RCRA-Large Generator / SRC# 2465</b>		<b>EPA ID:</b>	NYD077387165	
<b>Agency Address:</b>		SAME AS ABOVE		
<b>Generator Class:</b>		GENERATORS WHO GENERATE AT LEAST 1000 KG./MONTH OF NON-ACUTELY HAZARDOUS WASTE OR 1 KG./MONTH OF ACUTELY HAZARDOUS WASTE.		
<b>VISTA Address*:</b>	<b>COHEN LARRY DDS 190 HICKSVILLE RD BETHPAGE, NY 11714</b>	<b>VISTA ID#:</b>	3694571	<b>Map ID</b>
		<b>Distance/Direction:</b>	0.11 MI / S	<b>2B</b>
		<b>Plotted as:</b>	Point	
<b>RCRA-LgGen - RCRA-Large Generator / SRC# 2465</b>		<b>EPA ID:</b>	NYD986960540	
<b>Agency Address:</b>		SAME AS ABOVE		
<b>Generator Class:</b>		GENERATORS WHO GENERATE AT LEAST 1000 KG./MONTH OF NON-ACUTELY HAZARDOUS WASTE OR 1 KG./MONTH OF ACUTELY HAZARDOUS WASTE.		
<b>VISTA Address*:</b>	<b>THIS OLD GARAGE 12 HICKSVILLE RD BETHPAGE, NY 11714</b>	<b>VISTA ID#:</b>	4874660	<b>Map ID</b>
		<b>Distance/Direction:</b>	0.11 MI / S	<b>2B</b>
		<b>Plotted as:</b>	Point	
<b>RCRA-SmGen - RCRA-Small Generator / SRC# 2465</b>		<b>EPA ID:</b>	NYD987036092	
<b>Agency Address:</b>		SAME AS ABOVE		
<b>Generator Class:</b>		GENERATORS WHO GENERATE 100 KG./MONTH BUT LESS THAN 1000 KG./MONTH OF NON-ACUTELY HAZARDOUS WASTE		



\* VISTA address includes enhanced city and ZIP.

For more information call VISTA Information Solutions, Inc. at 1 - 800 - 767 - 0403.

Report ID: 088928-002

Date of Report: November 7, 1995

Version 2.4

Page #12

**PROPERTY AND THE ADJACENT AREA (within 3/8 mile) CONT.**

VISTA Address*:	<b>NORTHVILLE GAS STATION RTE 107 WANTAGH AVENUE BETHPAGE, NY 11714</b>	VISTA ID#:	3508165
		Distance/Direction:	0.12 MI / S
		Plotted as:	Point
<b>STATE LUST - State Leaking Underground Storage Tank / SRC# 2449</b>		Agency ID:	9206489

Map ID  
**2B**

**Agency Address:** NORTHVILLE GAS STATION  
RTE 107 WANTAGH AVENUE  
BETHPAGE, NY

**Tank Status:** NOT AVAILABLE

**Discovery Date:** SEPTEMBER 3, 1992

**Media Affected:** GROUNDWATER

**Substance:** GASOLINE (UNSPECIFIED)

**Leak Cause:** TANK FAILURE

**Leak Source:** FIXED FACILITY

**Remedial Action:** NOT AVAILABLE

**Remedial Status 1:** CASE OPEN

**Remedial Status 2:** NOT AVAILABLE

**Fields Not Reported:** Quantity (Units)

VISTA Address*:	<b>SUNOCO SERVICE STATION 100 HICKSVILLE RD BETHPAGE, NY 11714</b>	VISTA ID#:	407273
		Distance/Direction:	0.15 MI / S
		Plotted as:	Point
<b>RCRA-LgGen - RCRA-Large Generator / SRC# 2465</b>		EPA ID:	NYD000701607

Map ID  
**2C**

**Agency Address:** SAME AS ABOVE

**Generator Class:** GENERATORS WHO GENERATE AT LEAST 1000 KG./MONTH OF NON-ACUTELY HAZARDOUS WASTE OR 1 KG./MONTH OF ACUTELY HAZARDOUS WASTE.

<b>AST - Above Ground Storage Tank / SRC# 2304</b>		Agency ID:	041144
--	--	------------	--------

**Agency Address:** SUNOCO SERVICE STATION  
100 HICKSVILLE RD.  
BETHPAGE, NY

**Underground Tanks:** NOT REPORTED

**Aboveground Tanks:** 1

**Tanks Removed:** NOT REPORTED

<b>Tank ID:</b>	NOT REPORTED	<b>Tank Status:</b>	ACTIVE/IN SERVICE
<b>Tank Contents:</b>	FUEL OIL #2	<b>Leak Monitoring:</b>	MONITOR PRESENT
<b>Tank Age:</b>	NOT REPORTED	<b>Tank Piping:</b>	STEEL/IRON
<b>Tank Size (Units):</b>	500 (GALLONS)	<b>Tank Material:</b>	STEEL

VISTA Address*:	<b>SLOMINS INC. 75 LAUMAN LANE HICKSVILLE, NY 11801</b>	VISTA ID#:	1527026
		Distance/Direction:	0.13 MI / NW
		Plotted as:	Point
<b>AST - Above Ground Storage Tank / SRC# 2448</b>		Agency ID:	1-3240

Map ID  
**3**

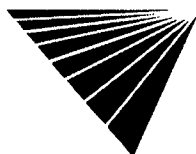
**Agency Address:** SLOMINS INC.  
75 LAUMAN LANE  
HICKSVILLE, NY 11801--

**Underground Tanks:** 1

**Aboveground Tanks:** 2

**Tanks Removed:** NOT REPORTED

<b>Tank ID:</b>	1	<b>Tank Status:</b>	ACTIVE/IN SERVICE
<b>Tank Contents:</b>	FUEL OIL	<b>Leak Monitoring:</b>	MONITOR PRESENT
<b>Tank Age:</b>	NOT REPORTED	<b>Tank Piping:</b>	STEEL/IRON
<b>Tank Size (Units):</b>	500000 (GALLONS)	<b>Tank Material:</b>	CARBON STEEL



\* VISTA address includes enhanced city and ZIP.

For more information call VISTA Information Solutions, Inc. at 1 - 800 - 767 - 0403.

Report ID: 088928-002

Date of Report: November 7, 1995

Version 2.4

Page #13

**PROPERTY AND THE ADJACENT AREA (within 3/8 mile) CONT.**

<b>Tank ID:</b>	2	<b>Tank Status:</b>	ACTIVE/IN SERVICE
<b>Tank Contents:</b>	FUEL OIL	<b>Leak Monitoring:</b>	MONITOR PRESENT
<b>Tank Age:</b>	NOT REPORTED	<b>Tank Piping:</b>	STEEL/IRON
<b>Tank Size (Units):</b>	1500000 (GALLONS)	<b>Tank Material:</b>	CARBON STEEL
<b>Tank ID:</b>	3	<b>Tank Status:</b>	ACTIVE/IN SERVICE
<b>Tank Contents:</b>	AGENCY REPORTS THE UNDEFINED TERM "OTHER"	<b>Leak Monitoring:</b>	MONITOR PRESENT
<b>Tank Age:</b>	NOT REPORTED	<b>Tank Piping:</b>	OTHER DESCRIPTIONS
<b>Tank Size (Units):</b>	3600 (GALLONS)	<b>Tank Material:</b>	CARBON STEEL

<b>VISTA Address*:</b>	<b>GRECO BROS. BULK TERMINAL LAUMAN LANE HICKSVILLE, NY</b>	<b>VISTA ID#:</b>	5362015
		<b>Distance/Direction:</b>	0.14 MI / NW
		<b>Plotted as:</b>	Point
<b>AST - Above Ground Storage Tank / SRC# 2304</b>		<b>Agency ID:</b>	055455

Map ID

**3**

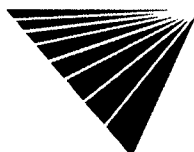
<b>Agency Address:</b>	SAME AS ABOVE		
<b>Underground Tanks:</b>	NOT REPORTED		
<b>Aboveground Tanks:</b>	1		
<b>Tanks Removed:</b>	NOT REPORTED		
<b>Tank ID:</b>	NOT REPORTED	<b>Tank Status:</b>	ACTIVE/IN SERVICE
<b>Tank Contents:</b>	FUEL OIL #2	<b>Leak Monitoring:</b>	NO MONITOR
<b>Tank Age:</b>	NOT REPORTED	<b>Tank Piping:</b>	STEEL/IRON
<b>Tank Size (Units):</b>	275 (GALLONS)	<b>Tank Material:</b>	STEEL

<b>VISTA Address*:</b>	<b>GRECO BROS. BULK TERMINAL LAUMAN LA HICKSVILLE RD. HICKSVILLE, NY</b>	<b>VISTA ID#:</b>	1276421
		<b>Distance/Direction:</b>	0.14 MI / NW
		<b>Plotted as:</b>	Point
<b>AST - Above Ground Storage Tank / SRC# 2448</b>		<b>Agency ID:</b>	1-3100

Map ID

**3**

<b>Agency Address:</b>	SAME AS ABOVE		
<b>Underground Tanks:</b>	6		
<b>Aboveground Tanks:</b>	1		
<b>Tanks Removed:</b>	NOT REPORTED		
<b>Tank ID:</b>	001	<b>Tank Status:</b>	ACTIVE/IN SERVICE
<b>Tank Contents:</b>	FUEL OIL	<b>Leak Monitoring:</b>	MONITOR PRESENT
<b>Tank Age:</b>	NOT REPORTED	<b>Tank Piping:</b>	STEEL/IRON
<b>Tank Size (Units):</b>	500000 (GALLONS)	<b>Tank Material:</b>	CARBON STEEL
<b>Tank ID:</b>	002	<b>Tank Status:</b>	ACTIVE/IN SERVICE
<b>Tank Contents:</b>	KEROSENE	<b>Leak Monitoring:</b>	NO MONITOR
<b>Tank Age:</b>	NOT REPORTED	<b>Tank Piping:</b>	STEEL/IRON
<b>Tank Size (Units):</b>	20000 (GALLONS)	<b>Tank Material:</b>	FIBERGLASS REINFORCED PLASTIC
<b>Tank ID:</b>	003	<b>Tank Status:</b>	CLOSED REMOVED
<b>Tank Contents:</b>	DIESEL	<b>Leak Monitoring:</b>	NO MONITOR
<b>Tank Age:</b>	NOT REPORTED	<b>Tank Piping:</b>	STEEL/IRON
<b>Tank Size (Units):</b>	1000 (GALLONS)	<b>Tank Material:</b>	CARBON-STEEL
<b>Tank ID:</b>	004	<b>Tank Status:</b>	CLOSED REMOVED
<b>Tank Contents:</b>	DIESEL	<b>Leak Monitoring:</b>	NO MONITOR
<b>Tank Age:</b>	NOT REPORTED	<b>Tank Piping:</b>	STEEL/IRON
<b>Tank Size (Units):</b>	1000 (GALLONS)	<b>Tank Material:</b>	CARBON STEEL
<b>Tank ID:</b>	005	<b>Tank Status:</b>	CLOSED REMOVED
<b>Tank Contents:</b>	UNLEADED GAS	<b>Leak Monitoring:</b>	NO MONITOR
<b>Tank Age:</b>	NOT REPORTED	<b>Tank Piping:</b>	STEEL/IRON
<b>Tank Size (Units):</b>	3000 (GALLONS)	<b>Tank Material:</b>	CARBON STEEL



\* VISTA address includes enhanced city and ZIP.

For more information call VISTA Information Solutions, Inc. at 1 - 800 - 767 - 0403.

Report ID: 088928-002

Date of Report: November 7, 1995

Version 2.4

Page #14

**PROPERTY AND THE ADJACENT AREA (within 3/8 mile) CONT.**

Tank ID:	006	Tank Status:	CLOSED REMOVED
Tank Contents:	LEADED GAS	Leak Monitoring:	NO MONITOR
Tank Age:	NOT REPORTED	Tank Piping:	STEEL/IRON
Tank Size (Units):	550 (GALLONS)	Tank Material:	CARBON STEEL
Tank ID:	007	Tank Status:	ACTIVE/IN SERVICE
Tank Contents:	KEROSENE	Leak Monitoring:	NO MONITOR
Tank Age:	NOT REPORTED	Tank Piping:	STEEL/IRON
Tank Size (Units):	1000 (GALLONS)	Tank Material:	STEEL,FIBERGLASS COATED

VISTA Address*:	<b>KANOWSKY RESIDENCE</b> <b>556 CENTRAL AVENUE</b> <b>BETHPAGE, NY 11714</b>	VISTA ID#:	2716052
		Distance/Direction:	0.14 MI / SE
		Plotted as:	Point

Map ID

**4**

<b>STATE LUST - State Leaking Underground Storage Tank / SRC# 2449</b>	Agency ID:	9000164
--	------------	---------

<b>Agency Address:</b>	KANOWSKY RESIDENCE 556 CENTRAL AVENUE BETHPAGE, NY
<b>Tank Status:</b>	NOT AVAILABLE
<b>Discovery Date:</b>	APRIL 1, 1990
<b>Media Affected:</b>	GROUNDWATER
<b>Substance:</b>	FUEL OIL #2
<b>Leak Cause:</b>	TANK FAILURE
<b>Leak Source:</b>	PRIVATE DWELLING
<b>Remedial Action:</b>	NOT AVAILABLE
<b>Remedial Status 1:</b>	CASE CLOSED/CLEANUP COMPLETE
<b>Remedial Status 2:</b>	NOT AVAILABLE
<b>Fields Not Reported:</b>	Quantity (Units)

VISTA Address*:	<b>SLOMINS INC</b> <b>125 LAUMAN LANE</b> <b>HICKSVILLE, NY 11801</b>	VISTA ID#:	383950
		Distance/Direction:	0.21 MI / NW
		Plotted as:	Point

Map ID

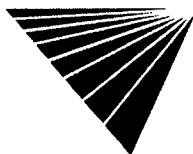
**5A**

<b>RCRA-LgGen - RCRA-Large Generator / SRC# 2465</b>	EPA ID:	NYD012869145
--	---------	--------------

<b>Agency Address:</b>	SAME AS ABOVE
<b>Generator Class:</b>	GENERATORS WHO GENERATE AT LEAST 1000 KG./MONTH OF NON-ACUTELY HAZARDOUS WASTE OR 1 KG./MONTH OF ACUTELY HAZARDOUS WASTE.

<b>STATE LUST - State Leaking Underground Storage Tank / SRC# 2449</b>	Agency ID:	9100704
--	------------	---------

<b>Agency Address:</b>	SLOMINS OIL CO 125 LAUMAN STREET HICKSVILLE, NY
<b>Tank Status:</b>	NOT AVAILABLE
<b>Discovery Date:</b>	APRIL 17, 1991
<b>Media Affected:</b>	GROUNDWATER
<b>Substance:</b>	FUEL OIL #2
<b>Leak Cause:</b>	TANK FAILURE
<b>Leak Source:</b>	COMMERCIAL INDUSTRY
<b>Remedial Action:</b>	NOT AVAILABLE
<b>Remedial Status 1:</b>	CASE CLOSED/CLEANUP COMPLETE
<b>Remedial Status 2:</b>	NOT AVAILABLE
<b>Fields Not Reported:</b>	Quantity (Units)



\* VISTA address includes enhanced city and ZIP.

For more information call VISTA Information Solutions, Inc. at 1 - 800 - 767 - 0403.

Report ID: 088928-002

Date of Report: November 7, 1995

Version 2.4

Page #15

**PROPERTY AND THE ADJACENT AREA (within 3/8 mile) CONT.**

**STATE UST - State Underground Storage Tank / SRC# 2304** Agency ID: 055883

Agency Address: SLOMINS INC.  
125 LAUMAN LANE  
HICKSVILLE, NY

Underground Tanks: 2  
Aboveground Tanks: NOT REPORTED  
Tanks Removed: NOT REPORTED

Tank ID:	NOT REPORTED	Tank Status:	ACTIVE/IN SERVICE
Tank Contents:	FUEL OIL #2	Leak Monitoring:	NO MONITOR
Tank Age:	NOT REPORTED	Tank Piping:	GALVANIZED STEEL
Tank Size (Units):	1000 (GALLONS)	Tank Material:	STEEL
Tank ID:	NOT REPORTED	Tank Status:	ACTIVE/IN SERVICE
Tank Contents:	FUEL OIL #2	Leak Monitoring:	NO MONITOR
Tank Age:	NOT REPORTED	Tank Piping:	GALVANIZED STEEL
Tank Size (Units):	1000 (GALLONS)	Tank Material:	STEEL

VISTA Address*:	<b>AMERICAN LITHOTECH</b> <b>631 HICKSVILLE ROAD</b> <b>BETHPAGE, NY 11714</b>	VISTA ID#:	19413	Map ID <b>5B</b>
		Distance/Direction:	0.21 MI / NW	
		Plotted as:	Point	

**RCRA-LgGen - RCRA-Large Generator / SRC# 2465** EPA ID: NYD981489453

Agency Address: SAME AS ABOVE  
Generator Class: GENERATORS WHO GENERATE AT LEAST 1000 KG./MONTH OF NON-ACUTELY HAZARDOUS WASTE OR 1 KG./MONTH OF ACUTELY HAZARDOUS WASTE.

VISTA Address*:	<b>ZIMMER RESIDENCE</b> <b>3609 FIDDLER LANE</b> <b>BETHPAGE, NY 11714</b>	VISTA ID#:	1134799	Map ID <b>6</b>
		Distance/Direction:	0.24 MI / W	
		Plotted as:	Point	

**STATE LUST - State Leaking Underground Storage Tank / SRC# 2449** Agency ID: 8912328

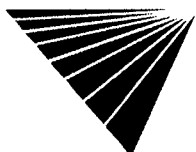
Agency Address: ZIMMER RESIDENCE  
3609 FIDDLER LANE  
BETHPAGE, NY

Tank Status: NOT AVAILABLE  
Discovery Date: MARCH 26, 1990  
Media Affected: SOIL/SAND/LAND  
Substance: FUEL OIL #2  
Leak Cause: TANK FAILURE  
Leak Source: PRIVATE DWELLING  
Remedial Action: NOT AVAILABLE  
Remedial Status 1: CASE CLOSED/CLEANUP COMPLETE  
Remedial Status 2: NOT AVAILABLE  
Fields Not Reported: Quantity (Units)

VISTA Address*:	<b>TAHOE CLEANERS</b> <b>436 N WANTAUGH AVE</b> <b>BETHPAGE, NY 11714</b>	VISTA ID#:	416735	Map ID <b>7</b>
		Distance/Direction:	0.26 MI / S	
		Plotted as:	Point	

**RCRA-LgGen - RCRA-Large Generator / SRC# 2465** EPA ID: NYD981133705

Agency Address: SAME AS ABOVE  
Generator Class: GENERATORS WHO GENERATE AT LEAST 1000 KG./MONTH OF NON-ACUTELY HAZARDOUS WASTE OR 1 KG./MONTH OF ACUTELY HAZARDOUS WASTE.



\* VISTA address includes enhanced city and ZIP.  
For more information call VISTA Information Solutions, Inc. at 1 - 800 - 767 - 0403.  
Report ID: 088928-002 Date of Report: November 7, 1995  
Version 2.4 Page #16

**PROPERTY AND THE ADJACENT AREA (within 3/8 mile) CONT.**

VISTA Address*:	<b>EAGLES NEST 500 CENTRAL AVE. BETHPAGE, NY 11714</b>	VISTA ID#:	5361415
		Distance/Direction:	0.31 MI / E
		Plotted as:	Point
<b>AST - Above Ground Storage Tank / SRC# 2304</b>		Agency ID:	056330
Agency Address:		EAGLES NEST 500 CENTRAL AVE. BETHPAGE, NY NOT REPORTED	
Underground Tanks:		1	
Aboveground Tanks:		NOT REPORTED	
Tanks Removed:		NOT REPORTED	
Tank ID:	NOT REPORTED	Tank Status:	ACTIVE/IN SERVICE
Tank Contents:	MOTOR OIL	Leak Monitoring:	MONITOR PRESENT
Tank Age:	NOT REPORTED	Tank Piping:	STEEL/IRON
Tank Size (Units):	250 (GALLONS)	Tank Material:	STEEL

Map ID  
**8**

VISTA Address*:	<b>EAGEL NEST 500 CENTRAL AVE BETHPAGE, NY 11714</b>	VISTA ID#:	3084742
		Distance/Direction:	0.31 MI / E
		Plotted as:	Point
<b>RCRA-SmGen - RCRA-Small Generator / SRC# 2465</b>		EPA ID:	NYD986964278
Agency Address:		SAME AS ABOVE	
Generator Class:		GENERATORS WHO GENERATE 100 KG./MONTH BUT LESS THAN 1000 KG./MONTH OF NON-ACUTELY HAZARDOUS WASTE	
<b>RCRA-Violations / SRC# 2465</b>		EPA ID:	NYD986964278
Agency Address:		SAME AS ABOVE	
Violation Type:		GENERATOR--OTHER REQUIREMENTS	
Violation Date:		APRIL 1, 1994	
Violation Class:		1	
Actual Compliance Date:		NOT REPORTED	
Scheduled Compliance Date:		NOT REPORTED	
Enforcement Number:		940729	
Enforcement Agency:		State	
Action Date:		JULY 29, 1994	
Action Type:		3008(A) COMPLIANCE ORDER	
Penalty Assessed:		1200	
Penalty Settlement:		PA 12	

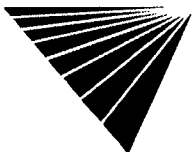
Map ID  
**8**

VISTA Address*:	<b>PHOENIX LABORATORIES INC 175 LAUMAN LANE HICKSVILLE, NY 11801</b>	VISTA ID#:	329488
		Distance/Direction:	0.33 MI / W
		Plotted as:	Point
<b>RCRA-SmGen - RCRA-Small Generator / SRC# 2465</b>		EPA ID:	NYD003998259
Agency Address:		SAME AS ABOVE	
Generator Class:		GENERATORS WHO GENERATE 100 KG./MONTH BUT LESS THAN 1000 KG./MONTH OF NON-ACUTELY HAZARDOUS WASTE	

Map ID  
**9A**

VISTA Address*:	<b>PROGRESSIVE CIRCUITS INC 180-R LAUMAN LN HICKSVILLE, NY 11801</b>	VISTA ID#:	1271331
		Distance/Direction:	0.34 MI / W
		Plotted as:	Point
<b>RCRA-SmGen - RCRA-Small Generator / SRC# 2465</b>		EPA ID:	NYD986891521
Agency Address:		SAME AS ABOVE	
Generator Class:		GENERATORS WHO GENERATE 100 KG./MONTH BUT LESS THAN 1000 KG./MONTH OF NON-ACUTELY HAZARDOUS WASTE	

Map ID  
**9A**



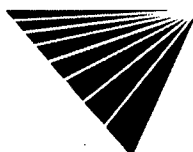
\* VISTA address includes enhanced city and ZIP.  
For more information call VISTA Information Solutions, Inc. at 1 - 800 - 767 - 0403.  
Report ID: 088928-002 Date of Report: November 7, 1995  
Version 2.4 Page #17

**PROPERTY AND THE ADJACENT AREA (within 3/8 mile) CONT.**

VISTA Address*:	<b>ABSOLUTE PHOTO INC 184 QUALITY PLAZA HICKSVILLE, NY 11801</b>	VISTA ID#:	3531	Map ID <b>9B</b>
		Distance/Direction:	0.34 MI / NW	
		Plotted as:	Point	
<b>RCRA-LgGen - RCRA-Large Generator / SRC# 2465</b>		EPA ID:	NYD982743965	
Agency Address:		SAME AS ABOVE		
Generator Class:		GENERATORS WHO GENERATE AT LEAST 1000 KG./MONTH OF NON-ACUTELY HAZARDOUS WASTE OR 1 KG./MONTH OF ACUTELY HAZARDOUS WASTE.		
VISTA Address*:	<b>HICKSVILLE POST OFFICE 260 ENGINEERS DRIVE HICKSVILLE, NY 11801</b>	VISTA ID#:	194617	Map ID <b>9B</b>
		Distance/Direction:	0.37 MI / NW	
		Plotted as:	Point	
<b>RCRA-LgGen - RCRA-Large Generator / SRC# 2465</b>		EPA ID:	NY9180090020	
Agency Address:		HICKSVILLE POST OFFICE 260 ENGINEERS DRIVE HICKSVILLE, NY 11802		
Generator Class:		GENERATORS WHO GENERATE AT LEAST 1000 KG./MONTH OF NON-ACUTELY HAZARDOUS WASTE OR 1 KG./MONTH OF ACUTELY HAZARDOUS WASTE.		
VISTA Address*:	<b>RENAISSANCE DESIGN BUILDING INC 91 ENGINEERS DR HICKSVILLE, NY 11801</b>	VISTA ID#:	4874565	Map ID <b>10</b>
		Distance/Direction:	0.33 MI / NW	
		Plotted as:	Point	
<b>RCRA-SmGen - RCRA-Small Generator / SRC# 2465</b>		EPA ID:	NY0000062687	
Agency Address:		SAME AS ABOVE		
Generator Class:		GENERATORS WHO GENERATE LESS THAN 100 KG./MONTH OF NON-ACUTELY HAZARDOUS WASTE.		

**SITES IN THE SURROUNDING AREA (within 3/8 - 1/2 mile)**

VISTA Address*:	<b>WILLIAM SIMONE OWNER 17 CEIL PLACE BETHPAGE, NY 11714</b>	VISTA ID#:	5417281	Map ID <b>11</b>
		Distance/Direction:	0.44 MI / SE	
		Plotted as:	Point	
<b>STATE LUST - State Leaking Underground Storage Tank / SRC# 2449</b>		Agency ID:	9415625	
Agency Address:		WILLIAM SIMONE OWNER 17 CEIL PLACE BETHPAGE, NY NOT AVAILABLE		
Tank Status:		NOT AVAILABLE		
Discovery Date:		MARCH 2, 1995		
Media Affected:		SOIL/SAND/LAND		
Substance:		FUEL OIL #2		
Quantity (Units):		1.0 (GALLONS)		
Leak Cause:		TANK FAILURE		
Leak Source:		PRIVATE DWELLING		
Remedial Action:		NOT AVAILABLE		
Remedial Status 1:		CASE OPEN		
Remedial Status 2:		NOT AVAILABLE		



\* VISTA address includes enhanced city and ZIP.

For more information call VISTA Information Solutions, Inc. at 1 - 800 - 767 - 0403.

Report ID: 088928-002

Date of Report: November 7, 1995

Version 2.4

Page #18

**SITES IN THE SURROUNDING AREA (within 1/2 - 3/4 mile)**

VISTA Address*:	<b>JOHNS SOUTH BAY MOBIL 755 S OYSTER BAY RD BETHPAGE, NY 11714</b>	VISTA ID#:	127057
		Distance/Direction:	0.50 MI / NW
		Plotted as:	Point
STATE LUST - State Leaking Underground Storage Tank / SRC# 2449		Agency ID:	9309724

Map ID

**12**

Agency Address: MOBIL OIL  
755 SOUTH OYSTER BAY ROAD  
BETHPAGE, NY  
NOT AVAILABLE

Tank Status: NOT AVAILABLE

Discovery Date: NOVEMBER 11, 1993

Media Affected: SOIL/SAND/LAND

Substance: GASOLINE (UNSPECIFIED)

Leak Cause: TANK FAILURE

Leak Source: FIXED FACILITY

Remedial Action: NOT AVAILABLE

Remedial Status 1: CASE CLOSED/CLEANUP COMPLETE

Remedial Status 2: NOT AVAILABLE

Fields Not Reported: Quantity (Units)

VISTA Address*:	<b>NYNEX VEHICLE SHERMAN AVE/SO 6TH STREET BETHPAGE, NY 11714</b>	VISTA ID#:	5162244
		Distance/Direction:	0.53 MI / NE
		Plotted as:	Point
STATE LUST - State Leaking Underground Storage Tank / SRC# 2449		Agency ID:	9314784

Map ID

**13**

Agency Address: NYNEX VEHICLE  
SHERMAN AVE/SO 6TH STREET  
BETHPAGE, NY  
NOT AVAILABLE

Tank Status: NOT AVAILABLE

Discovery Date: MARCH 17, 1994

Media Affected: SOIL/SAND/LAND

Substance: GASOLINE (UNSPECIFIED)

Leak Cause: TANK FAILURE

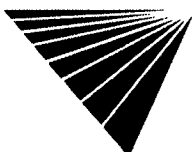
Leak Source: TRUCK/HIGHWAY VEHICLE

Remedial Action: NOT AVAILABLE

Remedial Status 1: CASE CLOSED/CLEANUP COMPLETE

Remedial Status 2: NOT AVAILABLE

Fields Not Reported: Quantity (Units)



\* VISTA address includes enhanced city and ZIP.

For more information call VISTA Information Solutions, Inc. at 1 - 800 - 767 - 0403.

Report ID: 088928-002

Date of Report: November 7, 1995

Version 2.4

Page #19



**SITES IN THE SURROUNDING AREA (within 1/2 - 3/4 mile) CONT.**

VISTA Address*:	<b>AL ANDRIANO RESIDENCE</b> <b>159 12TH STREET</b> <b>BETHPAGE, NY 11714</b>	VISTA ID#:	3911181
		Distance/Direction:	0.53 MI / N
		Plotted as:	Point
<b>STATE LUST - State Leaking Underground Storage Tank / SRC#</b> <b>2449</b>		Agency ID:	9213083

Map ID

**14**

**Agency Address:** AL ANDRIANO RESIDENCE  
159 12TH STREET  
BETHPAGE, NY

**Tank Status:** NOT AVAILABLE

**Discovery Date:** FEBRUARY 23, 1993

**Media Affected:** SOIL/SAND/LAND

**Substance:** FUEL OIL #2

**Quantity (Units):** 1.0 (GALLONS)

**Leak Cause:** TANK FAILURE

**Leak Source:** PRIVATE DWELLING

**Remedial Action:** NOT AVAILABLE

**Remedial Status 1:** CASE CLOSED/CLEANUP COMPLETE

**Remedial Status 2:** NOT AVAILABLE

VISTA Address*:	<b>LOUIS MOORE RESIDENCE</b> <b>3715 LARK STREET</b> <b>LEVITTOWN, NY 11756</b>	VISTA ID#:	3505837
		Distance/Direction:	0.62 MI / S
		Plotted as:	Point
<b>STATE LUST - State Leaking Underground Storage Tank / SRC#</b> <b>2449</b>		Agency ID:	9204633

Map ID

**15**

**Agency Address:** LOUIS MOORE RESIDENCE  
3715 LARK STREET  
LEVITTOWN, NY

**Tank Status:** NOT AVAILABLE

**Discovery Date:** JULY 21, 1992

**Media Affected:** SOIL/SAND/LAND

**Substance:** FUEL OIL #2

**Quantity (Units):** 10.0 (GALLONS)

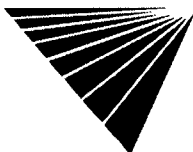
**Leak Cause:** TANK FAILURE

**Leak Source:** PRIVATE DWELLING

**Remedial Action:** NOT AVAILABLE

**Remedial Status 1:** CASE CLOSED/CLEANUP COMPLETE

**Remedial Status 2:** NOT AVAILABLE



\* VISTA address includes enhanced city and ZIP.

For more information call VISTA Information Solutions, Inc. at 1 - 800 - 767 - 0403.

Report ID: 088928-002

Date of Report: November 7, 1995

Version 2.4

Page #20

**SITES IN THE SURROUNDING AREA (within 1/2 - 3/4 mile) CONT.**

VISTA Address*:	<b>VONBEVERN RESIDENCE</b> <b>4060 AVOCA</b> <b>BETHPAGE, NY 11714</b>	VISTA ID#:	2712255
		Distance/Direction:	0.66 MI / SE
		Plotted as:	Point

Map ID

**16**

<b>STATE LUST - State Leaking Underground Storage Tank / SRC# 2449</b>	Agency ID:	8912017
--	------------	---------

**Agency Address:** VONBEVERN RESIDENCE  
4060 AVOCA  
BETHPAGE, NY

**Tank Status:** NOT AVAILABLE

**Discovery Date:** MARCH 19, 1990

**Media Affected:** GROUNDWATER

**Substance:** FUEL OIL #2

**Quantity (Units):** 100.0 (GALLONS)

**Leak Cause:** TANK FAILURE

**Leak Source:** PRIVATE DWELLING

**Remedial Action:** NOT AVAILABLE

**Remedial Status 1:** CASE CLOSED/CLEANUP COMPLETE

**Remedial Status 2:** NOT AVAILABLE

VISTA Address*:	<b>S S SUNOCO SERVICE</b> <b>489 STEWART AVE</b> <b>BETHPAGE, NY 11714</b>	VISTA ID#:	408411
		Distance/Direction:	0.67 MI / E
		Plotted as:	Point

Map ID

**17**

<b>STATE LUST - State Leaking Underground Storage Tank / SRC# 2449</b>	Agency ID:	8701169
--	------------	---------

**Agency Address:** SUNOCO S/S  
489 STEWART AVENUE  
BETHPAGE, NY

**Tank Status:** NOT AVAILABLE

**Discovery Date:** JUNE 2, 1989

**Media Affected:** SOIL/SAND/LAND

**Substance:** WASTE OIL

**Leak Cause:** TANK FAILURE

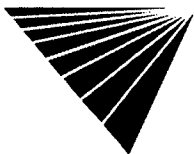
**Leak Source:** FIXED FACILITY

**Remedial Action:** NOT AVAILABLE

**Remedial Status 1:** CASE CLOSED/CLEANUP COMPLETE

**Remedial Status 2:** NOT AVAILABLE

**Fields Not Reported:** Quantity (Units)



\* VISTA address includes enhanced city and ZIP.

For more information call VISTA Information Solutions, Inc. at 1 - 800 - 767 - 0403.

Report ID: 088928-002

Date of Report: November 7, 1995

Version 2.4

Page #21

**SITES IN THE SURROUNDING AREA (within 1/2 - 3/4 mile) CONT.**

VISTA Address*:	<b>JAMES BAIL RESIDENCE</b> <b>127 SOUTH 1ST ST</b> <b>BETHPAGE, NY 11714</b>	VISTA ID#:	5415574	Map ID  <b>18</b>
		Distance/Direction:	0.68 MI / NE	
		Plotted as:	Point	
<b>STATE LUST - State Leaking Underground Storage Tank / SRC# 2449</b>		Agency ID:	9500753	

**Agency Address:** JAMES BAIL RESIDENCE  
127 SOUTH 1ST ST  
BETHPAGE, NY

**Tank Status:** NOT AVAILABLE

**Discovery Date:** APRIL 19, 1995

**Media Affected:** SOIL/SAND/LAND

**Substance:** FUEL OIL #2

**Leak Cause:** TANK FAILURE

**Leak Source:** PRIVATE DWELLING

**Remedial Action:** NOT AVAILABLE

**Remedial Status 1:** CASE OPEN

**Remedial Status 2:** NOT AVAILABLE

**Fields Not Reported:** Quantity (Units)

VISTA Address*:	<b>THOMAS NORMAN RESIDENCE</b> <b>14 SATELLITE LANE</b> <b>LEVITTOWN, NY 11756</b>	VISTA ID#:	1126090	Map ID  <b>19</b>
		Distance/Direction:	0.68 MI / SW	
		Plotted as:	Point	
<b>STATE LUST - State Leaking Underground Storage Tank / SRC# 2449</b>		Agency ID:	8900767	

**Agency Address:** THOMAS NORMAN RESIDENCE  
14 SATELLITE LANE  
LEVITTOWN, NY

**Tank Status:** NOT AVAILABLE

**Discovery Date:** APRIL 21, 1989

**Media Affected:** SOIL/SAND/LAND

**Substance:** FUEL OIL #2

**Leak Cause:** TANK FAILURE

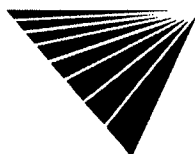
**Leak Source:** PRIVATE DWELLING

**Remedial Action:** NOT AVAILABLE

**Remedial Status 1:** CASE CLOSED/CLEANUP COMPLETE

**Remedial Status 2:** NOT AVAILABLE

**Fields Not Reported:** Quantity (Units)



\* VISTA address includes enhanced city and ZIP.

For more information call VISTA Information Solutions, Inc. at 1 - 800 - 767 - 0403.

Report ID: 088928-002

Date of Report: November 7, 1995

Version 2.4

Page #22

**SITES IN THE SURROUNDING AREA (within 1/2 - 3/4 mile) CONT.**

VISTA Address*:	<b>AVIS CAR RENTAL</b> <b>980 SOUTH BROADWAY</b> <b>BETHPAGE, NY 11714</b>	VISTA ID#:	1118893
		Distance/Direction:	0.68 MI / NW
		Plotted as:	Point

Map ID

**20**

<b>STATE LUST - State Leaking Underground Storage Tank / SRC#</b> <b>2449</b>	Agency ID:	8809010
--	------------	---------

**Agency Address:** AVIS CAR RENTAL  
980 SOUTH BROADWAY  
BETHPAGE, NY  
NOT AVAILABLE

**Tank Status:** NOT AVAILABLE

**Discovery Date:** FEBRUARY 19, 1989

**Media Affected:** SOIL/SAND/LAND

**Substance:** GASOLINE (UNSPECIFIED)

**Quantity (Units):** 15.0 (GALLONS)

**Leak Cause:** TANK FAILURE

**Leak Source:** VEHICLE

**Remedial Action:** NOT AVAILABLE

**Remedial Status 1:** CASE CLOSED/CLEANUP COMPLETE

**Remedial Status 2:** NOT AVAILABLE

VISTA Address*:	<b>GOLDENSOHN RESIDENCE</b> <b>35 STEVEDORE LANE</b> <b>LEVITTOWN, NY 11756</b>	VISTA ID#:	1134758
		Distance/Direction:	0.70 MI / W
		Plotted as:	Point

Map ID

**21**

<b>STATE LUST - State Leaking Underground Storage Tank / SRC#</b> <b>2449</b>	Agency ID:	9415349
--	------------	---------

**Agency Address:** GOLDENSOHN RESIDENCE  
35 STEVEDORE LANE  
LEVITTOWN, NY  
NOT AVAILABLE

**Tank Status:** NOT AVAILABLE

**Discovery Date:** FEBRUARY 23, 1995

**Media Affected:** SOIL/SAND/LAND

**Substance:** FUEL OIL #2

**Leak Cause:** TANK FAILURE

**Leak Source:** PRIVATE DWELLING

**Remedial Action:** NOT AVAILABLE

**Remedial Status 1:** CASE OPEN

**Remedial Status 2:** NOT AVAILABLE

**Fields Not Reported:** Quantity (Units)

<b>STATE LUST - State Leaking Underground Storage Tank / SRC#</b> <b>2449</b>	Agency ID:	8912267
--	------------	---------

**Agency Address:** LANCIOTTI RESIDENCE  
44 STEVEDORE LANE  
LEVITTOWN, NY  
NOT AVAILABLE

**Tank Status:** NOT AVAILABLE

**Discovery Date:** MARCH 26, 1990

**Media Affected:** GROUNDWATER

**Substance:** FUEL OIL #2

**Leak Cause:** TANK FAILURE

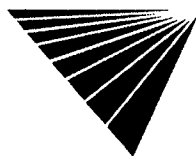
**Leak Source:** PRIVATE DWELLING

**Remedial Action:** NOT AVAILABLE

**Remedial Status 1:** CASE CLOSED/CLEANUP COMPLETE

**Remedial Status 2:** NOT AVAILABLE

**Fields Not Reported:** Quantity (Units)



\* VISTA address includes enhanced city and ZIP.

For more information call VISTA Information Solutions, Inc. at 1 - 800 - 767 - 0403.

Report ID: 088928-002

Date of Report: November 7, 1995

Version 2.4

Page #23

**SITES IN THE SURROUNDING AREA (within 3/4 - 1 1/4 miles)**

VISTA Address*:	<b>GRUMMAN AEROSPACE CORP SOUTH OYSTER BAY RD BETHPAGE, NY 11714</b>	VISTA ID#:	3624600	Map ID  <b>22</b>
		Distance/Direction:	0.92 MI / N	
		Plotted as:	Point	
<b>CORRACTS / SRC# 2465</b>		EPA ID:	NYD002047967	

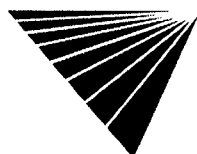
Agency Address: GRUMMAN AEROSPACE CORP  
SOUTH OYSTER BAY ROAD  
BETHPAGE, NY 11714

Prioritization Status: HIGH  
 RCRA Facility Assessment Completed: YES  
 Notice of Contamination: NO  
 Determination of need For a RFI (RCRA Facility Investigation): NO  
 RFI Imposed: YES  
 RFI Workplan Notice of Deficiency Issued: NO  
 RFI Workplan Approved: YES  
 RFI Report Received: NO  
 RFI Approved: YES  
 No Further Corrective Action at this Time: NO  
 Stabilization Measures Evaluation: YES  
 CMS (Corrective Measure Study) Imposition: NO  
 CMS Workplan Approved: YES  
 CMS Report Received: NO  
 CMS Approved: YES  
 Date for Remedy Selection (CM Imposed): NO  
 Corrective Measures Design Approved: NO  
 Corrective Measures Investigation Workplan Approved: NO  
 Certification of Remedy Completion: YES  
 Stabilization Measures Implementation: NO  
 Stabilization Measures Completed: NO  
 Corrective Action Process Termination: NO

<b>RCRA-TSD / SRC# 2465</b>	EPA ID:	NYD002047967
-----------------------------	---------	--------------

Agency Address: GRUMMAN AEROSPACE CORP  
SOUTH OYSTER BAY ROAD  
BETHPAGE, NY 11714

Off-Site Waste Received: NO  
 Land Disposal: NO  
 Incinerator: NO  
 Storage/Treatment: YES



\* VISTA address includes enhanced city and ZIP.

For more information call VISTA Information Solutions, Inc. at 1 - 800 - 767 - 0403.

Report ID: 088928-002

Date of Report: November 7, 1995

Version 2.4

Page #24

**SITES IN THE SURROUNDING AREA (within 3/4 - 1 1/4 miles) CONT.**

Map ID

**23**

VISTA Address*:	<b>RUCO POLYMER CORPORATION NEW SOUTH ROAD HICKSVILLE, NY 11801</b>	VISTA ID#:	362950
		Distance/Direction:	0.97 MI / NW
		Plotted as:	Radius
NPL - National Priority List / SRC# 2435		EPA ID:	NYD002920312

**Agency Address:** RUCO POLYMER CORPORATION  
NEW SOUTH ROAD  
HICKSVILLE, NY 11802  
CURRENTLY ON FINAL NPL

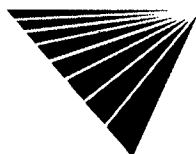
**NPL Status:** PRIVATE/NON-GOVERNMENTAL

**Site Ownership:** NOT AVAILABLE

**Lead Agency:** THE HOOKER/RUCO SITE IS AN ACTIVE PLASTICS MANUFACTURING FACILITY.  
RCRA: SMALL GENERATOR.

**Site Description:**

Event Type:	Lead Agency:	Event Status:	Start Date:	Completion Date:
ADMINISTRATIVE RECORD	FEDERAL ENFORCEMENT	ADMIN RECORD COMPILATION / REMEDIAL EVENT	UNKNOWN	NOT REPORTED
COMMUNITY RELATIONS PLAN	EPA IN-HOUSE	UNKNOWN	UNKNOWN	NOT REPORTED
MANAGEMENT ASSISTANCE (FEDERAL RENUMERATION)	FEDERAL ENFORCEMENT	UNKNOWN	UNKNOWN	NOT REPORTED
ADMINISTRATIVE RECORD	RESPONSIBLE PARTY	ADMIN RECORD COMPILATION / REMEDIAL EVENT	UNKNOWN	NOT REPORTED
COMBINED RI/FS	RESPONSIBLE PARTY	UNKNOWN	UNKNOWN	NOT REPORTED
RECORD OF DECISION	FEDERAL ENFORCEMENT	UNKNOWN	NOT REPORTED	NOT REPORTED
DISCOVERY	EPA FUND-FINANCED	UNKNOWN	NOT REPORTED	UNKNOWN
PRELIMINARY ASSESSMENT	STATE, FUND FINANCED	LOWER PRIORITY	NOT REPORTED	UNKNOWN
SCREENING SITE INSPECTION	EPA FUND-FINANCED	HIGHER PRIORITY	UNKNOWN	UNKNOWN
REMOVAL INVESTIGATION AT NPL SITES	EPA FUND-FINANCED	STABILIZATION	UNKNOWN	UNKNOWN
FINAL LISTING ON NPL	EPA FUND-FINANCED	UNKNOWN	NOT REPORTED	UNKNOWN
PROPOSED FOR NPL	EPA FUND-FINANCED	UNKNOWN	NOT REPORTED	UNKNOWN
COMBINED RI/FS	EPA FUND-FINANCED	UNKNOWN	UNKNOWN	UNKNOWN
RI/FS WORKPLAN APPROVED	EPA FUND-FINANCED	UNKNOWN	UNKNOWN	UNKNOWN



\* VISTA address includes enhanced city and ZIP.

For more information call VISTA Information Solutions, Inc. at 1 - 800 - 767 - 0403.

Report ID: 088928-002

Date of Report: November 7, 1995

Version 2.4

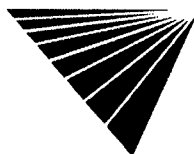
Page #25

**SITES IN THE SURROUNDING AREA (within 3/4 - 1 1/4 miles) CONT.**

<b>Event Type:</b>	<b>Lead Agency:</b>	<b>Event Status:</b>	<b>Start Date:</b>	<b>Completion Date:</b>
REMOVAL INVESTIGATION AT NPL SITES	EPA FUND-FINANCED	STABILIZATION	UNKNOWN	UNKNOWN
COMBINED RI/FS	RESPONSIBLE PARTY	UNKNOWN	UNKNOWN	UNKNOWN
RECORD OF DECISION	FEDERAL ENFORCEMENT	UNKNOWN	NOT REPORTED	UNKNOWN
COMBINED RI/FS	RESPONSIBLE PARTY	UNKNOWN	UNKNOWN	UNKNOWN
RECORD OF DECISION	FEDERAL ENFORCEMENT	UNKNOWN	NOT REPORTED	UNKNOWN

<b>SPL - State Equivalent Priority List / SRC# 2566</b>	EPA ID: Agency ID:	NYD002920312 130004
---	-----------------------	------------------------

<b>Agency Address:</b>	RUCO POLYMER CORP. (HOOKER CHEM) NEW SOUTH ROAD HICKSVILLE, NY 11801 LAGOON, LANDFILL
<b>Facility Type:</b>	NOT AVAILABLE
<b>Lead Agency:</b>	REMEDIAL ACTION PENDING/IN PROGRESS
<b>State Status:</b>	PLANT WASTE
<b>Pollutant 1:</b>	ETHYLHEXYL AND RELATED COMPOUNDS
<b>Pollutant 2:</b>	ETHYLENE SUBSTANCE
<b>Pollutant 3:</b>	
<b>Fields Not Reported:</b>	Status



\* VISTA address includes enhanced city and ZIP.

For more information call VISTA Information Solutions, Inc. at 1 - 800 - 767 - 0403.

Report ID: 088928-002

Date of Report: November 7, 1995

Version 2.4

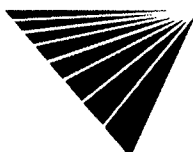
Page #26

**SITES IN THE SURROUNDING AREA (within 3/4 - 1 1/4 miles) CONT.**

<b>CORRACTS / SRC# 2465</b>		<b>EPA ID:</b>	NYD002920312
<b>Agency Address:</b>	RUCO POLYMER CORP. NEW SOUTH ROAD HICKSVILLE, NY 11801		
<b>Prioritization Status:</b>	HIGH		
<b>RCRA Facility Assessment Completed:</b>	YES		
<b>Notice of Contamination:</b>	NO		
<b>Determination of need For a RFI (RCRA Facility Investigation):</b>	NO		
<b>RFI Imposed:</b>	NO		
<b>RFI Workplan Notice of Deficiency Issued:</b>	NO		
<b>RFI Workplan Approved:</b>	NO		
<b>RFI Report Received:</b>	NO		
<b>RFI Approved:</b>	NO		
<b>No Further Corrective Action at this Time:</b>	YES		
<b>Stabilization Mesaures Evaluation:</b>	NO		
<b>CMS (Corrective Measure Study) Imposition:</b>	NO		
<b>CMS Workplan Approved:</b>	NO		
<b>CMS Report Received:</b>	NO		
<b>CMS Approved:</b>	NO		
<b>Date for Remedy Selection (CM Imposed):</b>	NO		
<b>Corrective Measures Design Approved:</b>	NO		
<b>Corrective Measures Investigation Workplan Approved:</b>	NO		
<b>Certification of Remedy Completion:</b>	NO		
<b>Stabilization Measures Implementation:</b>	NO		
<b>Stabilization Measures Completed:</b>	NO		
<b>Corrective Action Process Termination:</b>	NO		

<b>VISTA Address*:</b>	<b>AMERICAN DRIVE-IN CLEANERS 3801 HEMPSTEAD TURNPIKE HEMPSTEAD, NY 11552</b>	<b>VISTA ID#:</b>	3505357	<b>Map ID 24</b>
		<b>Distance/Direction:</b>	1.08 MI / S	
		<b>Plotted as:</b>	Point	

<b>SPL - State Equivalent Priority List / SRC# 2566</b>		<b>Agency ID:</b>	130049
<b>Agency Address:</b>	SAME AS ABOVE		
<b>Facility Type:</b>	LAGOON, LANDFILL		
<b>Lead Agency:</b>	NOT AVAILABLE		
<b>State Status:</b>	REMEDIAL ACTION PENDING/IN PROGRESS		
<b>Pollutant 1:</b>	TETRACHLOROETHYLENE/TCE		
<b>Pollutant 2:</b>	UNKNOWN		
<b>Pollutant 3:</b>	UNKNOWN		
<b>Fields Not Reported:</b>	Status		



\* VISTA address includes enhanced city and ZIP.  
 For more information call VISTA Information Solutions, Inc. at 1 - 800 - 767 - 0403.  
 Report ID: 088928-002 Date of Report: November 7, 1995  
 Version 2.4 Page #27

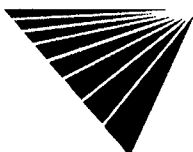


**UNMAPPED SITES**

VISTA Address*:	<b>NCDPW NO WANTAGH AVENUE LEVITTOWN, NY 11756</b>	VISTA ID#:	2739735
<b>STATE LUST - State Leaking Underground Storage Tank / SRC# 2449</b>		Agency ID:	9111735
<b>Agency Address:</b>	NCDPW NO WANTAGH AVENUE LEVITTOWN, NY		
<b>Tank Status:</b>	NOT AVAILABLE		
<b>Discovery Date:</b>	FEBRUARY 13, 1992		
<b>Media Affected:</b>	GROUNDWATER		
<b>Substance:</b>	DIESEL		
<b>Remedial Action:</b>	NOT AVAILABLE		
<b>Remedial Status 1:</b>	CASE CLOSED/CLEANUP COMPLETE		
<b>Remedial Status 2:</b>	NOT AVAILABLE		

VISTA Address*:	<b>NAVAL WEAPONS IND. RESERVE PLANT STEWART AVENUE BETHPAGE, NY 11714</b>	VISTA ID#:	4123188
<b>SPL - State Equivalent Priority List / SRC# 2566</b>		EPA ID:	NYD602047967
		Agency ID:	130003B
<b>Agency Address:</b>	SAME AS ABOVE		
<b>Facility Type:</b>	LAGOON, LANDFILL		
<b>Lead Agency:</b>	NOT AVAILABLE		
<b>State Status:</b>	REMEDIAL ACTION PENDING/IN PROGRESS		
<b>Pollutant 1:</b>	TRICHLOROETHYLENE		
<b>Pollutant 2:</b>	TETRACHLOROETHENE		
<b>Pollutant 3:</b>	TRICHLOROETHANE/TCA		
<b>Fields Not Reported:</b>	Status		

VISTA Address*:	<b>TOWN OF OYSTER BAY STEWART AVE BETHPAGE, NY 11714</b>	VISTA ID#:	5321334
<b>STATE LUST - State Leaking Underground Storage Tank / SRC# 2449</b>		Agency ID:	9409098
<b>Agency Address:</b>	TOWN OF OYSTER BAY STEWART AVE BETHPAGE, NY		
<b>Tank Status:</b>	NOT AVAILABLE		
<b>Discovery Date:</b>	OCTOBER 7, 1994		
<b>Media Affected:</b>	GROUNDWATER		
<b>Substance:</b>	PETROLEUM		
<b>Remedial Action:</b>	NOT AVAILABLE		
<b>Remedial Status 1:</b>	CASE OPEN		
<b>Remedial Status 2:</b>	NOT AVAILABLE		



\* VISTA address includes enhanced city and ZIP.

For more information call VISTA Information Solutions, Inc. at 1 - 800 - 767 - 0403.

Report ID: 088928-002

Date of Report: November 7, 1995

Version 2.4

Page #28

**UNMAPPED SITES CONT.**

VISTA Address*:	<b>NAVAL WEAPONS INDUSTRIAL RESERVE PLA SOUTH OYSTER BAY ROAD BETHPAGE, NY 11714</b>	VISTA ID#:	3624601
-----------------	--	------------	---------

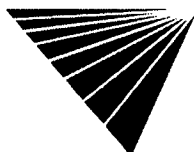
CERCLIS / SRC# 2596	EPA ID:	NY2170022162
Agency Address:	SAME AS ABOVE	
NPL Status:	NOT A PROPOSED, CURRENT, OR DELETED NPL SITE	
Site Ownership:	FEDERALLY OWNED	
Lead Agency:	NOT AVAILABLE	
Site Description:	THERE ARE POTENTIAL HAZARDOUS WASTE AREAS AT THISSITE; SUCH AS WASTES GENERATED PERMARILY FROM AIRCRAFT PRODUCTIONS.	

VISTA Address*:	<b>GRUMMAN AEROSPACE GRUMMAN AEROSPACE BETHPAGE, NY 11714</b>	VISTA ID#:	1337762
-----------------	---	------------	---------

STATE LUST - State Leaking Underground Storage Tank / SRC# 2449	Agency ID:	8707733
Agency Address:	GRUMMAN AEROSPACE GRUMMAN AEROSPACE BETHPAGE, NY	
Tank Status:	NOT AVAILABLE	
Discovery Date:	JUNE 29, 1993	
Media Affected:	GROUNDWATER	
Substance:	DIESEL	
Remedial Action:	NOT AVAILABLE	
Remedial Status 1:	CASE OPEN	
Remedial Status 2:	NOT AVAILABLE	

VISTA Address*:	<b>JERICO JEWISH CENTER NORTH BROADWAY HICKSVILLE, NY</b>	VISTA ID#:	1522341
-----------------	---	------------	---------

STATE LUST - State Leaking Underground Storage Tank / SRC# 2449	Agency ID:	9009442
Agency Address:	SAME AS ABOVE	
Tank Status:	NOT AVAILABLE	
Discovery Date:	UNKNOWN	
Media Affected:	GROUNDWATER	
Substance:	FUEL OIL #2	
Remedial Action:	NOT AVAILABLE	
Remedial Status 1:	CASE CLOSED/CLEANUP COMPLETE	
Remedial Status 2:	NOT AVAILABLE	



\* VISTA address includes enhanced city and ZIP.  
 For more information call VISTA Information Solutions, Inc. at 1 - 800 - 767 - 0403.  
 Report ID: 088928-002 Date of Report: November 7, 1995  
 Version 2.4 Page #29

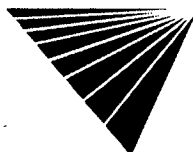


**UNMAPPED SITES CONT.**

VISTA Address*:	<b>GRUMMAN AEROSPACE BUILDING #2 GRUMMAN BETHPAGE, NY 11714</b>	VISTA ID#:	4111070
<b>STATE LUST - State Leaking Underground Storage Tank / SRC# 2449</b>		Agency ID:	8704145
Agency Address:	GRUMMAN AEROSPACE BUILDING #2 GRUMMAN BETHPAGE, NY		
Tank Status:	NOT AVAILABLE		
Discovery Date:	AUGUST 19, 1987		
Media Affected:	GROUNDWATER		
Substance:	FUEL OIL #2		
Remedial Action:	NOT AVAILABLE		
Remedial Status 1:	CASE CLOSED/CLEANUP COMPLETE		
Remedial Status 2:	NOT AVAILABLE		

VISTA Address*:	<b>GRUMMAN AEROSPACE BUILDING #1 BETHPAGE, NY 11714</b>	VISTA ID#:	4111071
<b>STATE LUST - State Leaking Underground Storage Tank / SRC# 2449</b>		Agency ID:	8705197
Agency Address:	GRUMMAN AEROSPACE BUILDING #1 BETHPAGE, NY		
Tank Status:	NOT AVAILABLE		
Discovery Date:	SEPTEMBER 21, 1987		
Media Affected:	GROUNDWATER		
Substance:	JET FUEL		
Remedial Action:	NOT AVAILABLE		
Remedial Status 1:	CASE CLOSED/CLEANUP COMPLETE		
Remedial Status 2:	NOT AVAILABLE		

VISTA Address*:	<b>GRUMMAN AEROSPACE BLDG 115 BETHPAGE, NY 11714</b>	VISTA ID#:	4111072
<b>STATE LUST - State Leaking Underground Storage Tank / SRC# 2449</b>		Agency ID:	8807239
Agency Address:	GRUMMAN AEROSPACE BLDG 115 BETHPAGE, NY		
Tank Status:	NOT AVAILABLE		
Discovery Date:	DECEMBER 1, 1988		
Media Affected:	GROUNDWATER		
Substance:	FUEL OIL #2		
Remedial Action:	NOT AVAILABLE		
Remedial Status 1:	CASE CLOSED/CLEANUP COMPLETE		
Remedial Status 2:	NOT AVAILABLE		



\* VISTA address includes enhanced city and ZIP.

For more information call VISTA Information Solutions, Inc. at 1 - 800 - 767 - 0403.

Report ID: 088928-002

Date of Report: November 7, 1995

Version 2.4

Page #31

**UNMAPPED SITES CONT.**

VISTA Address*:	<b>GRUMMAN GRUMMAN PLANT #17 BETHPAGE, NY 11714</b>	VISTA ID#:	2720226
-----------------	---	------------	---------

STATE LUST - State Leaking Underground Storage Tank / SRC# 2449	Agency ID:	9105709
--	------------	---------

Agency Address: GRUMMAN  
GRUMMAN PLANT #17  
BETHPAGE, NY

Tank Status: NOT AVAILABLE

Discovery Date: AUGUST 26, 1991

Media Affected: GROUNDWATER

Substance: FUEL OIL #2

Remedial Action: NOT AVAILABLE

Remedial Status 1: CASE CLOSED/CLEANUP COMPLETE

Remedial Status 2: NOT AVAILABLE

VISTA Address*:	<b>GRUMMAN AEROSPACE BUILDING 04-01-1 BETHPAGE, NY 11714</b>	VISTA ID#:	4111074
-----------------	--	------------	---------

STATE LUST - State Leaking Underground Storage Tank / SRC# 2449	Agency ID:	8901527
--	------------	---------

Agency Address: GRUMMAN AEROSPACE  
BUILDING 04-01-1  
BETHPAGE, NY

Tank Status: NOT AVAILABLE

Discovery Date: MAY 12, 1989

Media Affected: GROUNDWATER

Substance: FUEL OIL #2

Remedial Action: NOT AVAILABLE

Remedial Status 1: CASE CLOSED/CLEANUP COMPLETE

Remedial Status 2: NOT AVAILABLE

VISTA Address*:	<b>GRUMMAN BLDG #15 BETHPAGE, NY 11714</b>	VISTA ID#:	4111075
-----------------	--	------------	---------

STATE LUST - State Leaking Underground Storage Tank / SRC# 2449	Agency ID:	8901729
--	------------	---------

Agency Address: GRUMMAN  
BLDG #15  
BETHPAGE, NY

Tank Status: NOT AVAILABLE

Discovery Date: MAY 19, 1989

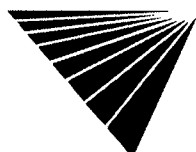
Media Affected: GROUNDWATER

Substance: PETROLEUM

Remedial Action: NOT AVAILABLE

Remedial Status 1: CASE CLOSED/CLEANUP COMPLETE

Remedial Status 2: NOT AVAILABLE



**UNMAPPED SITES CONT.**

VISTA Address*:	<b>GRUMMAN AEROSPACE BLDG 28 BETHPAGE, NY 11714</b>	VISTA ID#:	5308133
-----------------	---	------------	---------

<b>STATE LUST - State Leaking Underground Storage Tank / SRC# 2449</b>	Agency ID:	9408269
--	------------	---------

**Agency Address:** GRUMMAN AEROSPACE  
BLDG 28  
BETHPAGE, NY

**Tank Status:** NOT AVAILABLE

**Discovery Date:** SEPTEMBER 21, 1994

**Media Affected:** GROUNDWATER

**Substance:** FUEL OIL #2

**Remedial Action:** NOT AVAILABLE

**Remedial Status 1:** CASE OPEN

**Remedial Status 2:** NOT AVAILABLE

VISTA Address*:	<b>GRUMMAN AEROSPACE GRUMMAN FACILITY BLDG 1 BETHPAGE, NY 11714</b>	VISTA ID#:	2720231
-----------------	---	------------	---------

<b>STATE LUST - State Leaking Underground Storage Tank / SRC# 2449</b>	Agency ID:	8704386
--	------------	---------

**Agency Address:** GRUMMAN AEROSPACE  
GRUMMAN FACILITY BLDG 1  
BETHPAGE, NY

**Tank Status:** NOT AVAILABLE

**Discovery Date:** AUGUST 26, 1987

**Media Affected:** GROUNDWATER

**Substance:** JET FUEL

**Remedial Action:** NOT AVAILABLE

**Remedial Status 1:** CASE CLOSED/CLEANUP COMPLETE

**Remedial Status 2:** NOT AVAILABLE

VISTA Address*:	<b>AGO ASSOCIATES NY</b>	VISTA ID#:	5619437
-----------------	------------------------------	------------	---------

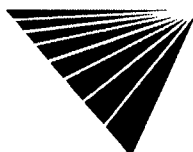
<b>STATE SWLF - Solid Waste Landfill / SRC# 2629</b>	Agency ID:	30D12
--	------------	-------

**Agency Address:** SAME AS ABOVE

**Facility Type:** NOT AVAILABLE

**Facility Status:** INACTIVE

**Permit Status:** NOT AVAILABLE



\* VISTA address includes enhanced city and ZIP.

For more information call VISTA Information Solutions, Inc. at 1 - 800 - 767 - 0403.

Report ID: 088928-002

Date of Report: November 7, 1995

Version 2.4

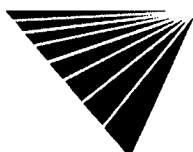
Page #33

**UNMAPPED SITES CONT.**

VISTA Address*:	<b>GRUMMAN AEROSPACE BLDG 111 BETHPAGE, NY 11714</b>	VISTA ID#:	4111064
-----------------	--	------------	---------

<b>STATE LUST - State Leaking Underground Storage Tank / SRC# 2449</b>	Agency ID:	9001711
--	------------	---------

<b>Agency Address:</b>	<i>GRUMMAN AEROSPACE BLDG 111 BETHPAGE, NY</i>
<b>Tank Status:</b>	<i>NOT AVAILABLE</i>
<b>Discovery Date:</b>	<i>MAY 14, 1990</i>
<b>Media Affected:</b>	<i>SOIL/SAND/LAND</i>
<b>Substance:</b>	<i>FUEL OIL #2</i>
<b>Remedial Action:</b>	<i>NOT AVAILABLE</i>
<b>Remedial Status 1:</b>	<i>CASE CLOSED/CLEANUP COMPLETE</i>
<b>Remedial Status 2:</b>	<i>NOT AVAILABLE</i>



\* VISTA address includes enhanced city and ZIP.  
 For more information call VISTA Information Solutions, Inc. at 1 - 800 - 767 - 0403.  
 Report ID: **088928-002** Date of Report: **November 7, 1995**  
*Version 2.4* *Page #34*

# SITE ASSESSMENT PLUS REPORT (EXTENDED BY 1/4 MILE)

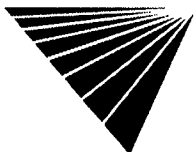
## DESCRIPTION OF DATABASES SEARCHED

### A) DATABASES SEARCHED TO 1 1/4 MILES

- NPL**  
**SRC#: 2435** VISTA conducts a database search to identify all sites within 1.25 mile of your property.  
**The agency release date for NPL was May, 1995.**
- The National Priorities List (NPL) is the EPA's database of uncontrolled or abandoned hazardous waste sites identified for priority remedial actions under the Superfund program. A site must meet or surpass a predetermined hazard ranking system score, be chosen as a state's top priority site, or meet three specific criteria set jointly by the US Dept of Health and Human Services and the US EPA in order to become an NPL site.
- SPL**  
**SRC#: 2566** VISTA conducts a database search to identify all sites within 1.25 mile of your property.  
**The agency release date for Inactive Hazardous Waste Disposal Sites was July, 1995.**
- This database is provided by the Department of Environmental Conservation, Bureau of Hazardous Site Control.
- CORRACTS**  
**SRC#: 2465** VISTA conducts a database search to identify all sites within 1.25 mile of your property.  
**The agency release date for RCRA Corrective Action Sites List was June, 1995.**
- The EPA maintains this database of RCRA facilities which are undergoing "corrective action". A "corrective action order" is issued pursuant to RCRA Section 3008 (h) when there has been a release of hazardous waste or constituents into the environment from a RCRA facility. Corrective actions may be required beyond the facility's boundary and can be required regardless of when the release occurred, even if it predates RCRA.
- RCRA-TSD**  
**SRC#: 2465** VISTA conducts a database search to identify all sites within 1.25 mile of your property.  
**The agency release date for RCRIS was June, 1995.**
- The EPA's Resource Conservation and Recovery Act (RCRA) Program identifies and tracks hazardous waste from the point of generation to the point of disposal. The RCRA Facilities database is a compilation by the EPA of facilities which report generation, storage, transportation, treatment or disposal of hazardous waste. RCRA TSDs are facilities which treat, store and/or dispose of hazardous waste.

### B) DATABASES SEARCHED TO 3/4 MILE

- CERCLIS**  
**SRC#: 2596** VISTA conducts a database search to identify all sites within 3/4 mile of your property.  
**The agency release date for CERCLIS was September, 1995.**
- The CERCLIS List contains sites which are either proposed to or on the National Priorities List (NPL) and sites which are in the screening and assessment phase for possible inclusion on the NPL. The information on each site includes a history of all pre-remedial, remedial, removal and community relations activities or events at the site, financial funding information for the events, and unrestricted enforcement activities.





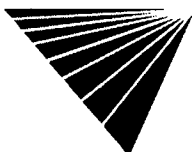
- NFRAP**  
**SRC#: 2632** VISTA conducts a database search to identify all sites within 3/4 mile of your property.  
**The agency release date for CERCLIS was September, 1995.**
- NFRAP sites may be sites where, following an initial investigation, no contamination was found, contamination was removed quickly, or the contamination was not serious enough to require Federal Superfund action or NPL consideration.
- SWLF**  
**SRC#: 1332** VISTA conducts a database search to identify all sites within 3/4 mile of your property.  
**The agency release date for Recycler's Listing was April, 1993.**
- This database is provided by the Department of Environmental Conservation, Bureau of Municipal Waste.
- SWLF**  
**SRC#: 1877** VISTA conducts a database search to identify all sites within 3/4 mile of your property.  
**The agency release date for Incinerators-Resource Recovery Projects was January, 1994.**
- This database is provided by the Department of Environmental Conservation, Bureau of Waste Management.
- SWLF**  
**SRC#: 2629** VISTA conducts a database search to identify all sites within 3/4 mile of your property.  
**The agency release date for Active Solid Waste Disposal Sites was September, 1995.**
- This database is provided by the Department of Environmental Conservation, Division of Municipal Waste.
- SWLF**  
**SRC#: 2629** VISTA conducts a database search to identify all sites within 3/4 mile of your property.  
**The agency release date for Inactive Solid Waste Sites was September, 1995.**
- This database is provided by the Department of Environmental Conservation, Division of Solid Waste.
- LUST**  
**SRC#: 2449** VISTA conducts a database search to identify all sites within 3/4 mile of your property.  
**The agency release date for LUST (Tank Test Failures) Database was June, 1995.**
- This database is provided by the Department of Environmental Conservation.

---

**C) DATABASES SEARCHED TO 1/2 MILE**

---

- RCRA-Viols/En**  
**SRC#: 2465** VISTA conducts a database search to identify all sites within 1/2 mile of your property.  
**The agency release date for RCRIS was June, 1995.**
- The EPA's Resource Conservation and Recovery Act (RCRA) Program identifies and tracks hazardous waste from the point of generation to the point of disposal. The RCRA Facilities database is a compilation by the EPA of facilities which report generation, storage, transportation, treatment or disposal of hazardous waste. RCRA Violators are facilities which have been cited for RCRA Violations at least once since 1980. RCRA Enforcements are enforcement actions taken against RCRA violators.
- UST's**  
**SRC#: 2304** VISTA conducts a database search to identify all sites within 1/2 mile of your property.  
**The agency release date for Nassau County Article XI "In Service" Tanks Database was April, 1995.**
- This database is provided by the Department of Environmental Conservation, Petroleum Bulk Storage Program. The New York Underground Storage Tank Database includes aboveground and aboveground tanks in all counties except Nassau. The statewide database contains information on Petroleum Bulk storage tanks; Hazardous Substance Bulk storage tanks; and Major Petroleum storage facilities.




---

For more information call VISTA Information Solutions, Inc. at 1 - 800 - 767 - 0403.

Report ID: 088928-002

Date of Report: November 7, 1995

Version 2.4

Page #36

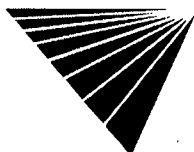
- UST's**  
**SRC#: 2448** VISTA conducts a database search to identify all sites within 1/2 mile of your property.  
**The agency release date for Underground Storage Tank Database was June, 1995.**
- This database is provided by the Department of Environmental Conservation, Petroleum Bulk Storage Program. The New York Underground Storage Tank Database includes aboveground and aboveground tanks in all counties except Nassau. The statewide database contains information on Petroleum Bulk storage tanks; Hazardous Substance Bulk storage tanks; and Major Petroleum storage facilities.
- AST's**  
**SRC#: 2304** VISTA conducts a database search to identify all sites within 1/2 mile of your property.  
**The agency release date for Nassau County Article XI "In Service" Tanks Database was April, 1995.**
- This database is provided by the Nassau County Department of Health.
- AST's**  
**SRC#: 2448** VISTA conducts a database search to identify all sites within 1/2 mile of your property.  
**The agency release date for Aboveground Storage Tanks was June, 1995.**
- This database is provided by the Department of Environmental Conservation, Petroleum Bulk Storage Program.
- TRIS**  
**SRC#: 2587** VISTA conducts a database search to identify all sites within 1/2 mile of your property.  
**The agency release date for TRIS was May, 1995.**
- Section 313 of the Emergency Planning and Community Right-to-Know Act (also known as SARA Title III) of 1986 requires the EPA to establish an inventory of Toxic Chemicals emissions from certain facilities( Toxic Release Inventory System). Facilities subject to this reporting are required to complete a Toxic Chemical Release Form(Form R) for specified chemicals.

---

#### D) DATABASES SEARCHED TO 3/8 MILE

---

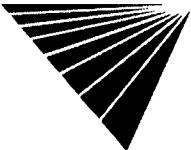
- ERNS**  
**SRC#: 2255** VISTA conducts a database search to identify all sites within .375 mile of your property.  
**The agency release date for ERNS was March, 1995.**
- The Emergency Response Notification System (ERNS) is a national database used to collect information on reported releases of oil and hazardous substances. The database contains information from spill reports made to federal authorities including the EPA, the US Coast Guard, the National Response Center and the Department of transportation. A search of the database records for the period October 1986 through September 1994 revealed the following information regarding reported spills of oil or hazardous substances in the stated area.
- RCRA-LgGen**  
**SRC#: 2465** VISTA conducts a database search to identify all sites within .375 mile of your property.  
**The agency release date for RCRIS was June, 1995.**
- The EPA's Resource Conservation and Recovery Act (RCRA) Program identifies and tracks hazardous waste from the point of generation to the point of disposal. The RCRA Facilities database is a compilation by the EPA of facilities which report generation, storage, transportation, treatment or disposal of hazardous waste. RCRA Large Generators are facilities which generate at least 1000 kg./month of non-acutely hazardous waste ( or 1 kg./month of acutely hazardous waste).



**RCRA-SmGen** VISTA conducts a database search to identify all sites within .375 mile of your property.  
**SRC#: 2465** The agency release date for RCRIS was June, 1995.

The EPA's Resource Conservation and Recovery Act (RCRA) Program identifies and tracks hazardous waste from the point of generation to the point of disposal. The RCRA Facilities database is a compilation by the EPA of facilities which report generation, storage, transportation, treatment or disposal of hazardous waste. RCRA Small and Very Small generators are facilities which generate less than 1000 kg./month of non-acutely hazardous waste.

**End of Report**



For more information call VISTA Information Solutions, Inc. at 1 - 800 - 767 - 0403.

Report ID: 088928-002

Date of Report: November 7, 1995

Version 2.4

Page #38

# Appendix C

**APPENDIX C**

**SUPPLEMENTAL INFORMATION**

♠1167\E0205601

## TANK TIGHTNESS TEST REPORT

◆1167\E0205601

Field Investigation  
 Article XI Facility  
 Nassau County Department of Health

- Initial System Test
- Tank Only
- System Retest
- New Installation
- Tank Removal
- Installation
- Periodic Year:
- Abandonment

Date of Job 9.14.95 Time \_\_\_\_\_  
 Date Received 9.29.95 Time \_\_\_\_\_  
 Contractor Tyree  
 Telephone # 247-3150

Facility ID# 000001  
 Confirmation# 254 H95 T01  
 Spill# 257 H95 T07

Establishment Name Queman - BOCES Boiler - Bldg #2  
 Address Stewart Ave  
 Town Ridgeway Telephone # \_\_\_\_\_  
 Cross Street: \_\_\_\_\_  
 No. of Tanks 1 Type of Test \_\_\_\_\_

NCDH #202

Tank #	<u>02-35-1</u>						
System Test	<input checked="" type="checkbox"/>						
Tank Test	<input type="checkbox"/>						
Size	<u>1015</u>						
Product	<u>R2K2</u>						
Leak Rate	<u>-.024</u>						
Pass/Fail	<u>PASS</u>						
Fee	<u>NONE</u>						
Fee Paid	<u>-</u>						
Retest Needed	<u>NO</u>						

Tank Removal							
Tank #							
Visible Hole							
# Holes							
Size							
Location							
Photo							

Excavation:    Clean    Contaminated Soil    Free floating oil  
 Soil Removed (Y/N)    Amount   

Installation: Tank size    Approved plans    Yes    No

Notes:  
9/14/95 - NCDH did not attend. R. Rhode  
11/13/95 - Check # 20479 returned to Tyree. No fee  
required for this tank. R. Rhode

Inspector R. Rhode Supervisor \_\_\_\_\_

Employee Number 178 Date 11/13/95  
 Continued on Reverse Side  
 Computer Entry  
 Data Book Entry

EH907 6/91

# Tyree Brothers Environmental Services, Inc.

208 Route 109, Farmingdale, NY 11735 • Fax: 516-249-3281 • Phone: 516-249-3150

SEPTEMBER 29, 1995

NASSAU COUNTY DEPT. OF HEALTH  
240 OLD COUNTRY ROAD  
MINEOLA, NY 11501

Gentleman:


Enclosed please find a copy of the Tank-Tightness Report For:

GRUMMAN  
PLANT #2 TANK #02-35-1  
BETHPAGE, NY

CONFIRMATION #	257H95T07
TESTING TECN.	STEVE BRANCEFORTE
LICENSE #	685
DATE OF TEST	9-14-94 <del>95</del>
FACILITY ID #	000001
DISTRICT	
LOT #	
BLOCK #	
SECTION #	
LEAK RATE: 1 TANK	
RESULTS:	(1) 10000 PASSED
SPILL#	

\*\*cc: NYSDEC

Sincerely,

  
Regina Costantini  
Project Coordinator

Member

 Tyree  
Environmental  
Technologies



1. OWNER Property  Tank(s)

Name Address Zip Representative Telephone  
Name Address Zip Representative Telephone  
Name Address Zip Representative Telephone

2. OPERATOR

Summan - plant #2 Tank 02351 Bethpage - NY

REASON FOR TEST (Explain Fully)

Part of Contract

4. WHO REQUESTED TEST AND WHEN

Name Title Company or Affiliation Date  
Part of Contract

5. TANK INVOLVED

Identify by Direction	Capacity	Brand/Supplier	Grade	Approx. Age	Steel/Fiberglass
Tank 02351	10000	—	F/022	—	Steel

INSTALLATION DATA

Location	Cover	Fill	Vents	Sensors	Pumps
—	—	4"	2"	—	—
North inside driveway, Rear of station, etc.	Concrete, Steel Top, Earth, etc.	Size, Thread, mass, Drop tubes, Remote Fills	Size, Manifolds	Which tanks?	Suction, Remote, Make if known

7. UNDERGROUND WATER

Depth to the water table from grade Below  Yes  No

8. FILL-UP ARRANGEMENTS

Tanks to be filled 8:00 9-14-95 Date Arranged by Tyler Bros. Name Telephone  
Extra product to "top off" and run test tank. How and who to provide? Consider NO Lead.  
Telephone or other contact for needs or injury Company Name Telephone

9. CONTRACTOR, MECHANICS, any other contractor involved

TYLER BROS.  
FARMINGDALE, N.Y. 11735  
(516) 743-7150

10. OTHER INFORMATION OR REMARKS

Additional information on any items above. Officials or others to be advised when testing is in progress or completed. Visitors or observers present during test, etc.

11. TEST METHOD

PETRO TITE  PETRO COMP  QUICK CHECK 2000

12. TEST RESULTS

Tests were made on the above tank systems in accordance with test procedures prescribed for as detailed on attached test charts with results as follows:  
Tank Identification Tank Tight Net Volume Change Per Hour Date Tested  
Tank # 02351 Yes -.00460/H 9-14-95

12. SENSOR CERTIFICATION

9-14-95 Date  
Series No. of Thermal Sensor

13. CONTRACTOR CERTIFICATION

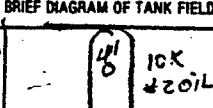
Technician Steve Branciforte Testing Contractor or Company, By: Reanna Corbett  
Certification # 1025

ENVIRONMENTAL SERVICES, INC.  
205 ROUTE 107 P.O. BOX  
FARMINGDALE, N.Y. 11735

# Data Chart for Tank System Tightness Test

PLEASE PRINT	1. OWNER <input type="checkbox"/> Property <input type="checkbox"/> Tenant	Northrop Cos (Contractor) III Address: _____		City: _____ State: _____	
2. OPERATOR	Name: <u>JOHN</u>		Address: _____		City: _____ State: _____
3. REASON FOR TEST (Explain Fully)	Name: <u>FINNELL</u>		Address: _____		City: _____ State: _____
4. WHO REQUESTED TEST AND WHEN	Name: <u>ACIO</u>		Address: _____		City: _____ State: _____
5. TANK INVOLVED <small>Use additional lines for individual tanks</small>	Identify by Division <u>N-TOS</u>	Country <u>IDK</u>	Grade <u>10K</u>	Volume <u>10K</u>	Surface <u>10K</u>
6. INSTALLATION DATA	Location <u>South of Building</u>	Owner <u>Asphalt</u>	File <u>1-47</u>	Site (Include make, date, tank removal, etc.)	Notes
7. UNDERGROUND WATER	Depth to the water table from grade _____				
8. FILL-UP ARRANGEMENTS	Tanks to be filled _____ Date _____ Arranged by _____				
9. CONTRACTOR, MECHANICS, AND OTHER CONTRIBUTOR INVOLVED	Name _____ Company _____				
10. OTHER INFORMATION OR REMARKS	Additional information on any other tanks checked or plans for the same during a process of completion. Number of tanks checked during test _____				
11. TEST METHOD	<input type="checkbox"/> PETRO TITE	<input type="checkbox"/> PETRO COMP	<input type="checkbox"/> QUICK CHECK 2000		
11a. TEST RESULTS	Tests were made on the above tank systems in accordance with test procedures prescribed for as detailed in attached test charts with results as follows:				
12. SENSOR CERTIFICATION	Date _____				

14. GRUMANS Stewart Ave Bethpage NY 9-14-95  
Name of Supplier, Owner or Dealer Address No. and Street City State Date of Test

15. TANK TO TEST <u>TANK # 02-35-1</u> <u>Heating Oil # 2</u>	15a. BRIEF DIAGRAM OF TANK FIELD 	16. CAPACITY Nominal Capacity <u>10,000</u> By shop capacity chart capacity <u>10,000</u>
---	---	---

17. FILL-UP FOR TEST  
 Static Water Surface before fill-up \_\_\_\_\_ Gallons  
 Tank Closure \_\_\_\_\_ Gallons  
 Total Gallons on Reading \_\_\_\_\_  
 Inventory on Tank \_\_\_\_\_  
 Water Entered \_\_\_\_\_  
 Top off equipment \_\_\_\_\_  
 Total Quantity \_\_\_\_\_

18. SPECIAL CONDITIONS AND PROCEDURES TO TEST THIS TANK  
 Water in tank  Lines being tested with LVLET  
 High water table in tank enclosure

19. TANK MEASUREMENTS FOR TSTT ASSEMBLY  
 Bottom of tank to grade' \_\_\_\_\_  
 Add 30" for "T" probe only \_\_\_\_\_  
 Total tubing to assembly - approximately \_\_\_\_\_

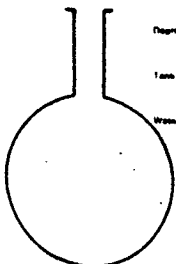
20. EXTENSION HOSE SETTING  
 Tank top to grade' \_\_\_\_\_  
 Extend hose on reaction tube 6" or more below tank top \_\_\_\_\_  
 \* If fill pipe extends above grade, use top of fill \_\_\_\_\_

USE WITH THERMAL SENSOR PMS039 (Blue Box)  
 22 Thermal Sensor Reading after circulation \_\_\_\_\_  
 23 Digits per °F in range of expansion change \_\_\_\_\_

21. VAPOR RECOVERY SYSTEM  Step 1  Step 2

24b. COEFFICIENT OF EXPANSION RECIPROCAL METHOD  
 Type of Product \_\_\_\_\_  
 Hydrometer Employed \_\_\_\_\_  
 Temperature on Tank After Circulation \_\_\_\_\_  
 Temperature of Sample \_\_\_\_\_  
 Difference (°F) \_\_\_\_\_  
 Observed API Gravity \_\_\_\_\_  
 Reciprocal \_\_\_\_\_  
 Total Quantity in test tank (17) \_\_\_\_\_  
 Reciprocal \_\_\_\_\_  
 Volume Change in this tank per °F \_\_\_\_\_  
 Transfer to Line 25b

24c. FOR TESTING WITH WATER  
 Water Temperature after Circulation \_\_\_\_\_  
 Tank C Level Thermal Sensor \_\_\_\_\_  
 Coefficient of Water Tank C \_\_\_\_\_  
 Added Surface Area  Yes  No Transfer CDE to Line 25b



The above calculations are to be used for dry soil conditions to establish a positive pressure advantage or when using the four pound rule to compensate for the presence of subsurface water in the tank area.

Refer to M.S.P.A. 30 Sections 2-3-2 and 2-7-2 and the tank manufacturer regarding suitable system test procedure.

27		28		29		30		31		32		33		34		35		36		37		38		39	
QC OF TEST PROCEDURES		TESTING TIME		TESTING TIME		TESTING TIME		TESTING TIME		TESTING TIME		TESTING TIME		TESTING TIME		TESTING TIME		TESTING TIME		TESTING TIME		TESTING TIME		TESTING TIME	
TESTING TIME		TESTING TIME		TESTING TIME		TESTING TIME		TESTING TIME		TESTING TIME		TESTING TIME		TESTING TIME		TESTING TIME		TESTING TIME		TESTING TIME		TESTING TIME		TESTING TIME	
TOP OFF SYSTEM-BLEED ALL FITTINGS-CHECK FOR LEAKS-CIRCULATE-TAKE API																									
FIRST SENSOR		0		42																					
START TEST		1		42																					
A=		2		42																					
		3		42																					
		4		42																					
		5		42																					
		6		42																					
		7		42																					
		8		42																					
		9		42																					
		10		42																					
DROP TO LOW LEVEL																									
FIRST SENSOR		0		12		100	175	1075	087	+21	1097														
START LOW LEVEL		1		12		175	193	+15	093	+5	1023														
		2		12		190	200	+10	094	+1	1005														
		3		12		200	210	+10	098	+4	1018														
		4		12		210	225	+15	1003	+3	1014														
		5		12		225	235	+10	006	+3	1014														
		6		12		235	245	+10	008	+2	1004														
		7		12		245	260	+15	014	+6	1028														
		8		12		260	270	+10	019	+5	1023														
		9		12		280	295	+15	023	+4	1018														
		10		12		295	300	+05	028	+5	1023														
		11		12		300	315	+15	031	+3	1014														
		12		12		315	315	+00	035	+4	1018														
		13		12		315	325	+10	037	+2	1009														
		14		12		325	340	+15	041	+4	1014														
		15		12		340	350	+10	044	+3	1014														
		20		12		350	365	+15	045	+1	1005														
		25		12		365	385	+20	050	+5	1023														
		30		12		385	400	+15	057	+7	1032														
		35		12		400	415	+15	060	+3	1014														
		40		12		415	435	+20	068	+5	1023														
		45		12		435	460	+25	069	+4	1014														
		50		12		460	475	+15	069	+0	1000														
		55		12		475	500	+25	075	+6	1028														
		60		12		500	525	+25	078	+3	1014														
		-047 ÷ 2 = -024 GPH																							
								350						357											

P-T Tank Test Data Chart  
Additional Info

1. Net Volume Change at Conclusion of Precipitation Test: \_\_\_\_\_ gph  
 Signature of Tester: \_\_\_\_\_  
 Date: \_\_\_\_\_

2. Statement  
 Tank and product handling system has been tested tight according to the Precipitation Test Criteria as established by regulatory agency. This is not intended to infer permission of a leak.  
 OR  
 Tank and product handling system has failed the tank tightness test according to the Precipitation Test Criteria as established by regulatory agency.  
 OR  
 Test invalid due to environmental or mechanical failure or other cause of the testing equipment.

It is the responsibility of the owner and/or operator of this system to immediately advise state and local authorities of any imminent hazard and the possible injury or damage to the environment as a result of the detection failure of this system. The manufacturer of this meter does not assume any responsibility or liability for any loss of product in the environment.  
 Tank Owner/Operator: \_\_\_\_\_  
 Date: \_\_\_\_\_

**NCDOH ARTICLE XI STORAGE FACILITY PERMIT APPLICATIONS**

♣1167\E0205601

Nassau County Department of Health  
 NASSAU COUNTY PUBLIC HEALTH ORDINANCE - ARTICLE XI  
 APPLICATION FOR A TOXIC OR HAZARDOUS MATERIALS  
 STORAGE FACILITY PERMIT  
 FORM I-GENERAL INFORMATION (SEE INSTRUCTION SHEET)

Check all that apply to your facility:  
 Tank Storage  Container Storage  Bulk Storage  Storage of Road De-icing Materials

Reason for submitting application:  
 New  Renewal  Change  Construction

Facility Name  
 NASSAU TECH - Bethpage Center  
 Street Address  
 610 Hicksville Road

Facility Mailing Address (If different from above)  
 Valentines Rd / Westbury Ny 11590

Facility Owner  
 Paumanock Development Corporation - Grumann -  
 Street Address  
 Hicksville Road

Property Owner (If not Facility Owner)  
 Street Address

Tank Owner (If not Facility Owner)  
 Street Address

Name that should appear on Permit (Permittee)  
 (If different from Facility Owner)  
 Nassau Tech Bethpage Center (BOCES)

Permittee's Street Address  
 610 Hicksville Road

Permittee's Relationship to Facility Owner:  
 Same  Operator of Facility  Other (Specify):

Principal Property Tax Code:  
 School District No. Section Block Lot  
 Island Trees #26 46 323 201

Forms Attached  
 Form 2 - Tank Registration  Form 3 - Bulk & Container Storage Registration  Form 4 - Storage of Road De-icing Materials  
 (Check all that apply)

I hereby affirm under penalty of perjury that the information provided on this form and on any attached forms, statements and exhibits is true and correct to the best of my knowledge and belief.

Print Name  
 John Golden  
 Signature  
 John Golden  
 Title  
 Head Custodian  
 Date  
 9/16/87

If applicable, check the following:  
 Municipality  
 Public School  
 Other tax-supported institutions

If tax exempt facility, enter N.Y. State Exempt Organization Certificate No. and enclose a copy:  
 999 999

For Office Use Only  
 Facility I.D. No. 52348  
 Date Rec'd. 9/20/87  
 Fee Exempt Fac.  Yes  No  
 Permit Months: 60

Post Office Bethpage NY 11714  
 State NY  
 Zip 11714  
 Phone 516-576-9180

Facility Contact Person (Name & Title)  
 John Golden - Head Custodian  
 State NY  
 Zip 11714  
 Phone 516-575-0574

Post Office Bethpage NY 11714  
 State NY  
 Zip 11714  
 Phone 516-576-9180

Post Office Bethpage NY 11714  
 State NY  
 Zip 11714  
 Phone 516-576-9180

Post Office Bethpage NY 11714  
 State NY  
 Zip 11714  
 Phone 516-576-9180

Post Office Bethpage NY 11714  
 State NY  
 Zip 11714  
 Phone 516-576-9180

Post Office Bethpage NY 11714  
 State NY  
 Zip 11714  
 Phone 516-576-9180

Post Office Bethpage NY 11714  
 State NY  
 Zip 11714  
 Phone 516-576-9180

Post Office Bethpage NY 11714  
 State NY  
 Zip 11714  
 Phone 516-576-9180

Post Office Bethpage NY 11714  
 State NY  
 Zip 11714  
 Phone 516-576-9180

Post Office Bethpage NY 11714  
 State NY  
 Zip 11714  
 Phone 516-576-9180

Post Office Bethpage NY 11714  
 State NY  
 Zip 11714  
 Phone 516-576-9180

NASSAU COUNTY DEPARTMENT OF HEALTH  
 APPLICATION FOR A TOXIC OR HAZARDOUS MATERIALS STORAGE FACILITY PERMIT  
 FORM 2 - TANK REGISTRATION  
 SEE INSTRUCTION SHEETS

For Office Use Only

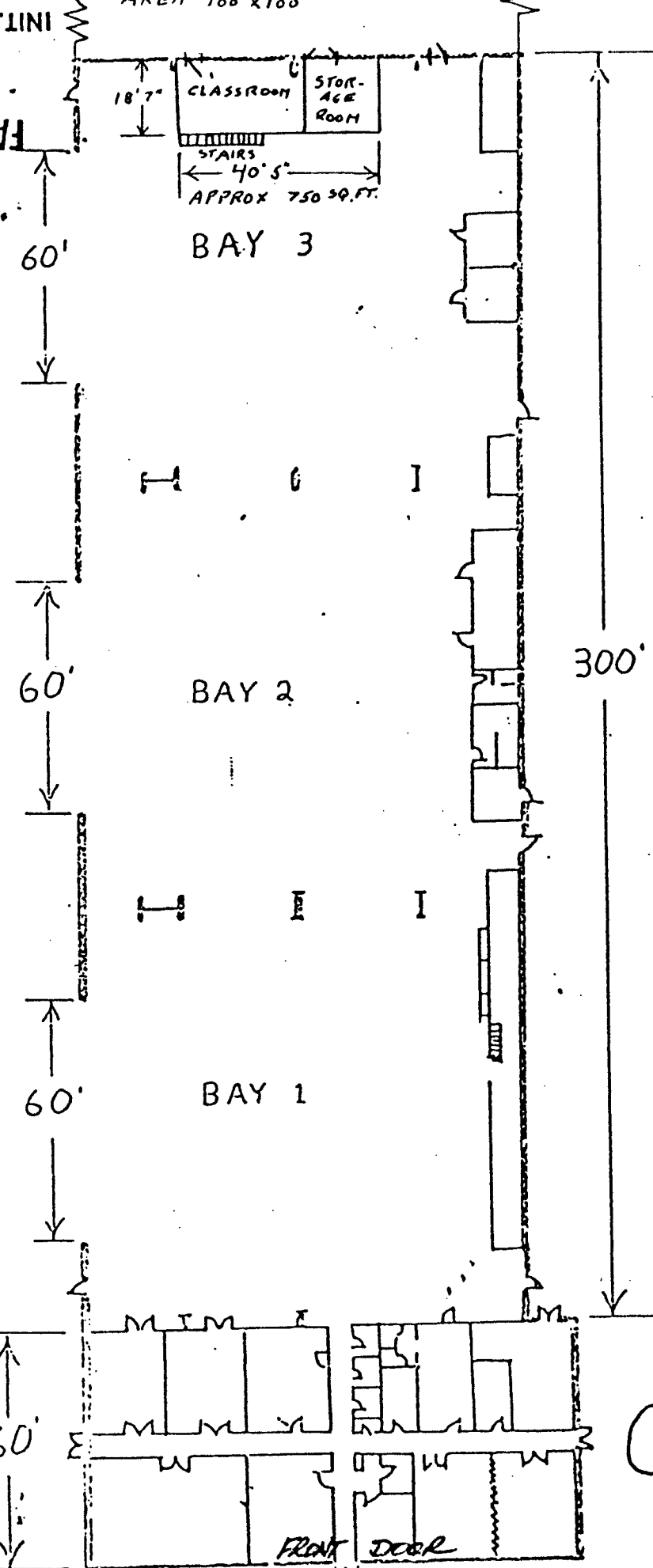
Date Application Received	9/20/87	Facility I.D.	52348
Reviewed By	<i>[Signature]</i>	Date Reviewed	12/22/87
Action:		No. of Months	60
<input checked="" type="checkbox"/> Approved	<input type="checkbox"/> Not Req'd.	<input type="checkbox"/> Disapproved	

Facility Name **NASSAU TECH BETHPAGE CENTER**  
 Facility Address **610 Hicksville Road, Bethpage, NY 11714**

Action	Tank Number	Location	Design Capacity (Gallons)	Material of Construction	Internal Protection	External Protection	Piping	Material Currently or Last Stored		Status	Tank Installation Date (Month/yr)	Leak Detection Svs.	Secondary Containment	Product Gauge	Dispenser Method	Fill	Additional Information for Abandoned Tanks				
								NCHH Number	Name								Date Last Used (Month/yr)	Condition			
1	1	4	10,000	1	9	4	1	1	64721	fuel oil	1	Dec-1976	2	5	1	1	1				

NEW CONSTRUCTION TRADES  
AREA 100' X 100'

FAA-AEA-GADO-11  
MAY 15 1987



BRUNNEN

52348

NASSAU TECH  
BETH PAGE  
CENTER

18,000 GALLON  
TANK

FAA-AEA-GADO-11

MAY 15 1987

INIT. SE

HICKSVILLE ROAD

NASSAU COUNTY DEPARTMENT OF HEALTH  
 APPLICATION FOR A TOXIC OR HAZARDOUS MATERIALS STORAGE FACILITY PERMIT  
 FORM 3 - BULK AND CONTAINER STORAGE REGISTRATION  
 SEE INSTRUCTION SHEETS

For Office Use Only

Date Application Received	Facility
Reviewed By	52348
Date Rev	

Facility Name: **NASSAU TECH - BETHPAGE CENTER**  
 Facility Address: **610 Hicksville Road, Bethpage, NY 11714**

Action:  Register Existing Area  Add Area  Remove Area  Modify Area  Area No.  
 Location:  Indoors  Outdoors Bulk Storage Max. Quantity Stored: **700**  
 Secondary Containment:  Impervious  Roof  Walls  Floor Drain & Storage Tank  None  Other (Specify):  
 Construction Material (Check all of Dike & Pad that Apply):  Concrete  Steel  Other (Specify):  Security  No

Type	NCDH Number	Material Name	Physical State	Amount Stored		Storage Method
				Average Quantity	Units	
1			1	220	1	1 & 2



# Appendix D

**APPENDIX D**

**SANBORN MAPPING AND GEOGRAPHIC INFORMATION SERVICE**



November 16, 1995

CLAIRE WERNER  
DVIRKA & BARTILUCCI-SYOSSET  
6800 JERICHO TPKE  
SYOSSET, NY 11791  
Phone: 5163649892 Fax: 5163649045

Dear CLAIRE WERNER:

A SANBORN MAP-SITE SEARCH was conducted on the following address:

Name/Ref#: B.O.C.E.S. BUILDING  
Address: 610 HICKSVILLE RD  
City/St/Zip: BETHPAGE, NY 11714  
Vista Order#: 8928021

SANBORN certifies that a search was made of their holdings and no SANBORN MAPS are available. VISTA has this letter of certification on file. Your use of VISTA for this service is greatly appreciated.

Document Retrieval Service  
VISTA ENVIRONMENTAL INFORMATION, INC.

# Appendix E

**APPENDIX E**

**REFERENCES**

## References

Geraghty and Miller, Remedial Investigation Report, Grumman Aerospace Corporation, Bethpage New York, September 1994.

LKB Aerial Photographs: April 11, 1950; March 23, 1962; April 11, 1969; March 24, 1976; and March 8, 1988.

Nassau County Planning Commission Composite Zoning Map, 1990.

NYSDOT: Hicksville Quadrangle

United States Department of Agriculture, Soil Conservation Service, Soil Survey of Nassau County, February 1987.

Vista: Site Assessment Report I.D. No.: 088928-002, November 7, 1995