

NORTHROP GRUMMAN

BETHPAGE FACILITY

JULY 2001

PLANT 24 ACCESS ROAD SITE BETHPAGE FACILITY PCB Investigation/Delineation Program

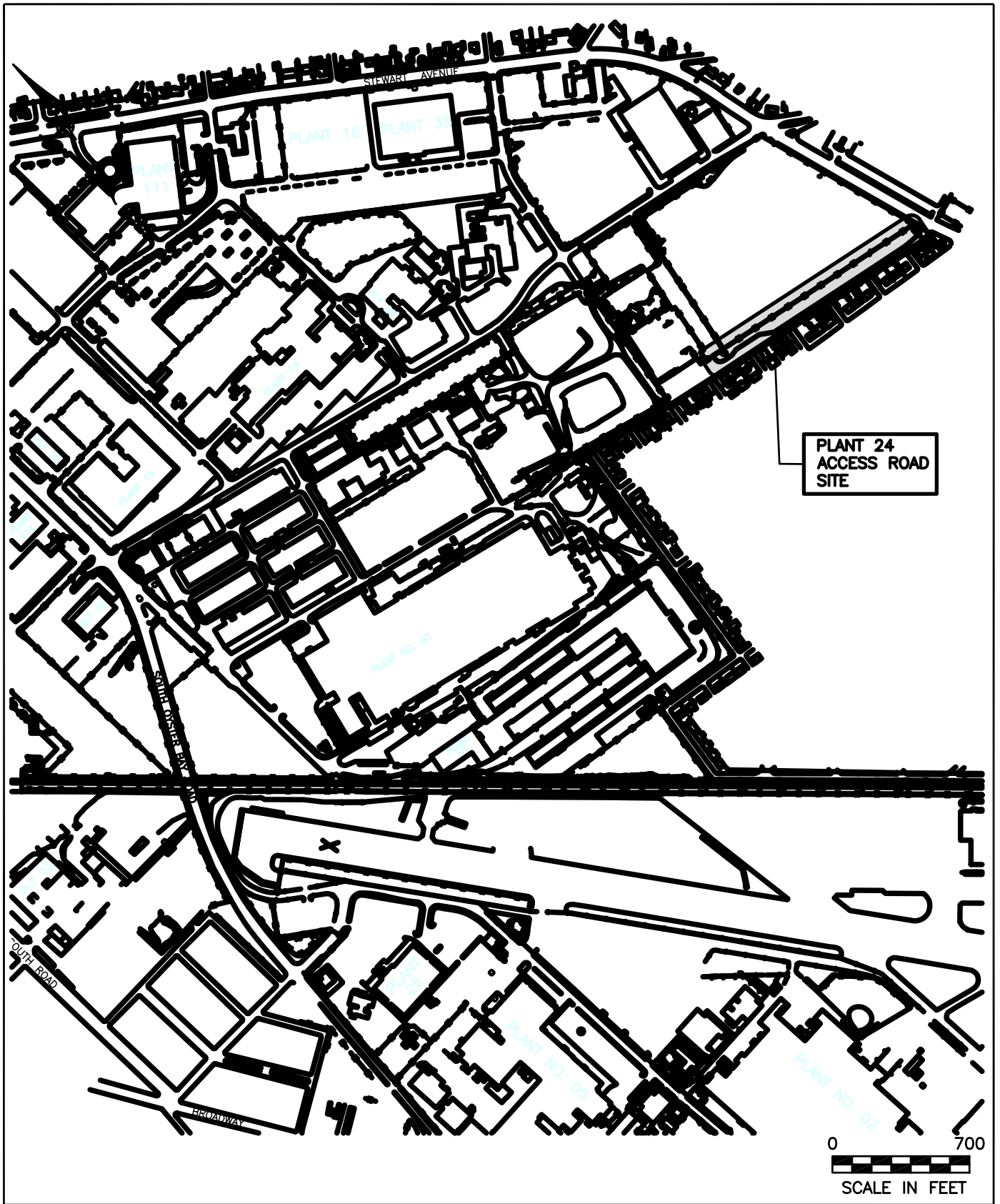


Report of Findings

NORTHROP GRUMMAN CORPORATION
BETHPAGE, NEW YORK



DVIRKA AND BARTILUCCI
CONSULTING ENGINEERS
A DIVISION OF WILLIAM F. COSULICH ASSOCIATES, P.C.



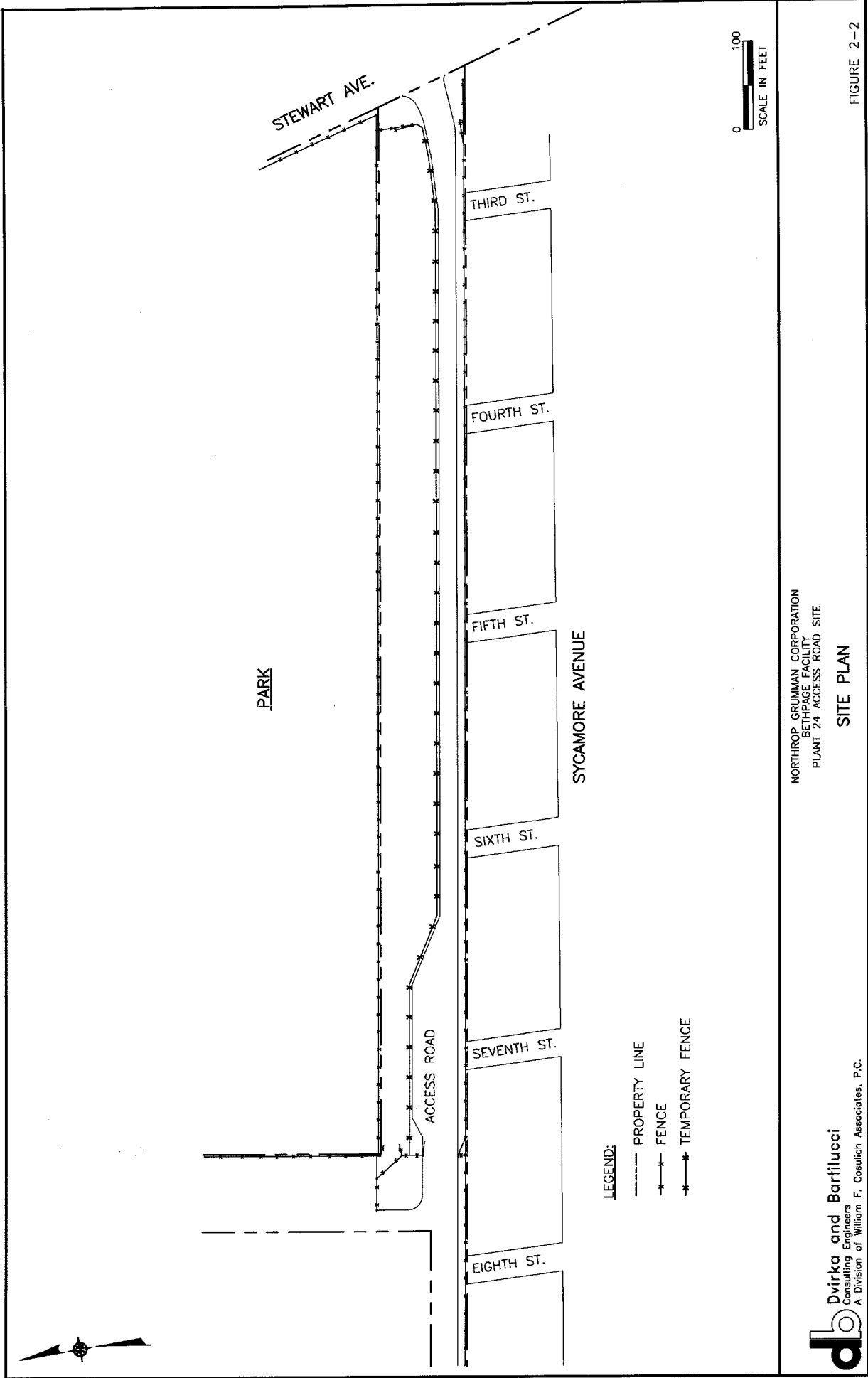
NORTHROP GRUMMAN CORPORATION
 BETHPAGE, NEW YORK

PLANT 24 ACCESS ROAD SITE
 SITE LOCATION MAP



Dvirka and Bartilucci
 Consulting Engineers
 A Division of William F. Cosulich Associates, P.C.

FIGURE 1-1

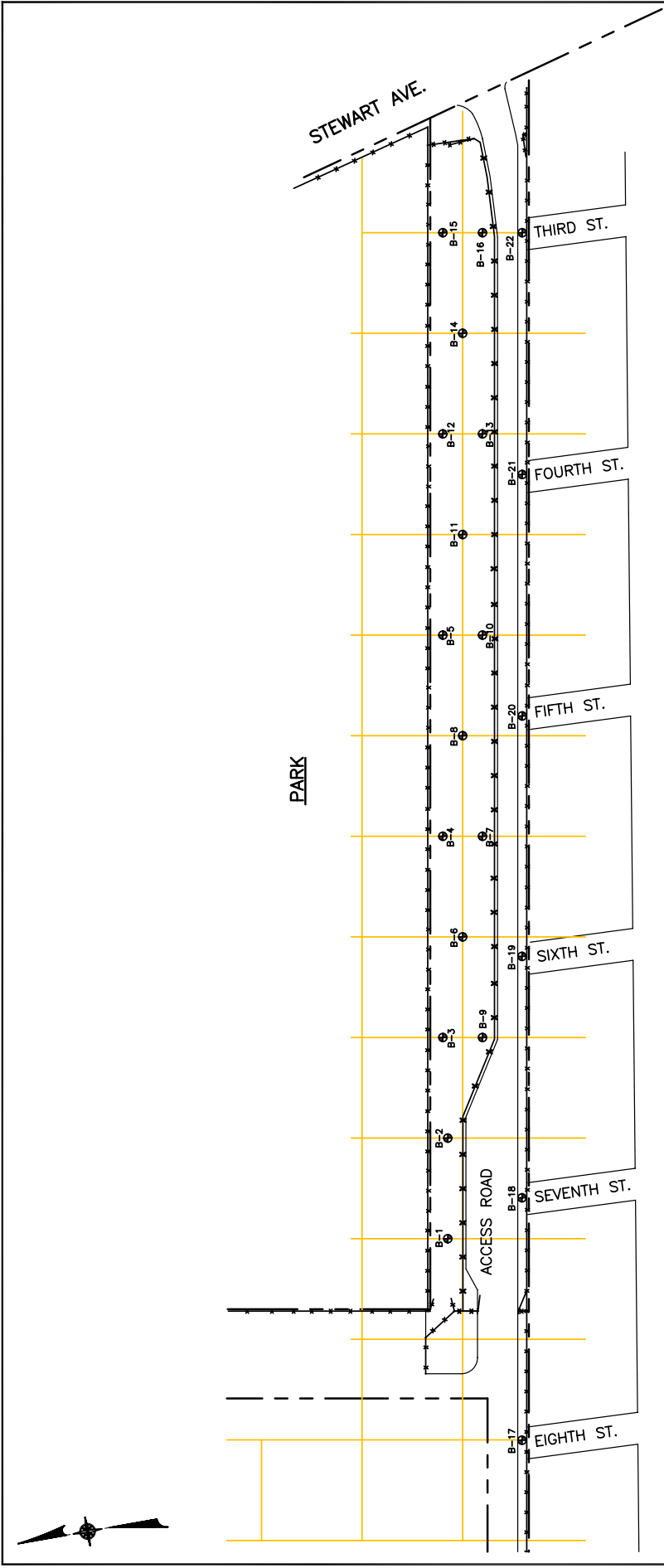


NORTHROP GRUMMAN CORPORATION
 BETHPAGE FACILITY
 PLANT 24 ACCESS ROAD SITE

SITE PLAN

FIGURE 2-2

db Dvirka and Barfilucci
 Consulting Engineers
 A Division of William F. Casulich Associates, P.C.



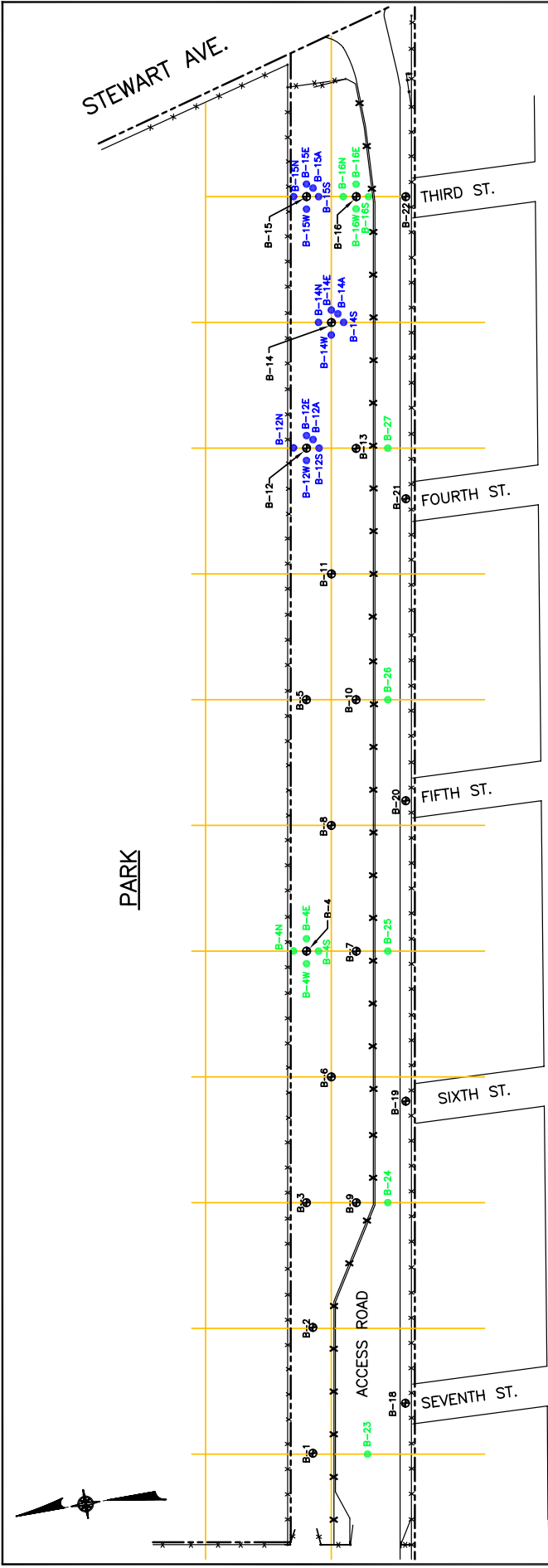
- LEGEND:
- ⊙ FIRST PHASE SOIL BORING LOCATION
 - - - - - PROPERTY LINE
 - * - * - FENCE
 - * - * - TEMPORARY FENCE



NORTHROP GRUMMAN CORPORATION
 BETHPAGE FACILITY
 PLANT 24 ACCESS ROAD SITE
**FIRST PHASE FIELD PROGRAM
 SOIL BORING LOCATION PLAN**

d Dvirka and Bartilucci
 Consulting Engineers
 A Division of William F. Cosulich Associates, P.C.

FIGURE 3-1



LEGEND:

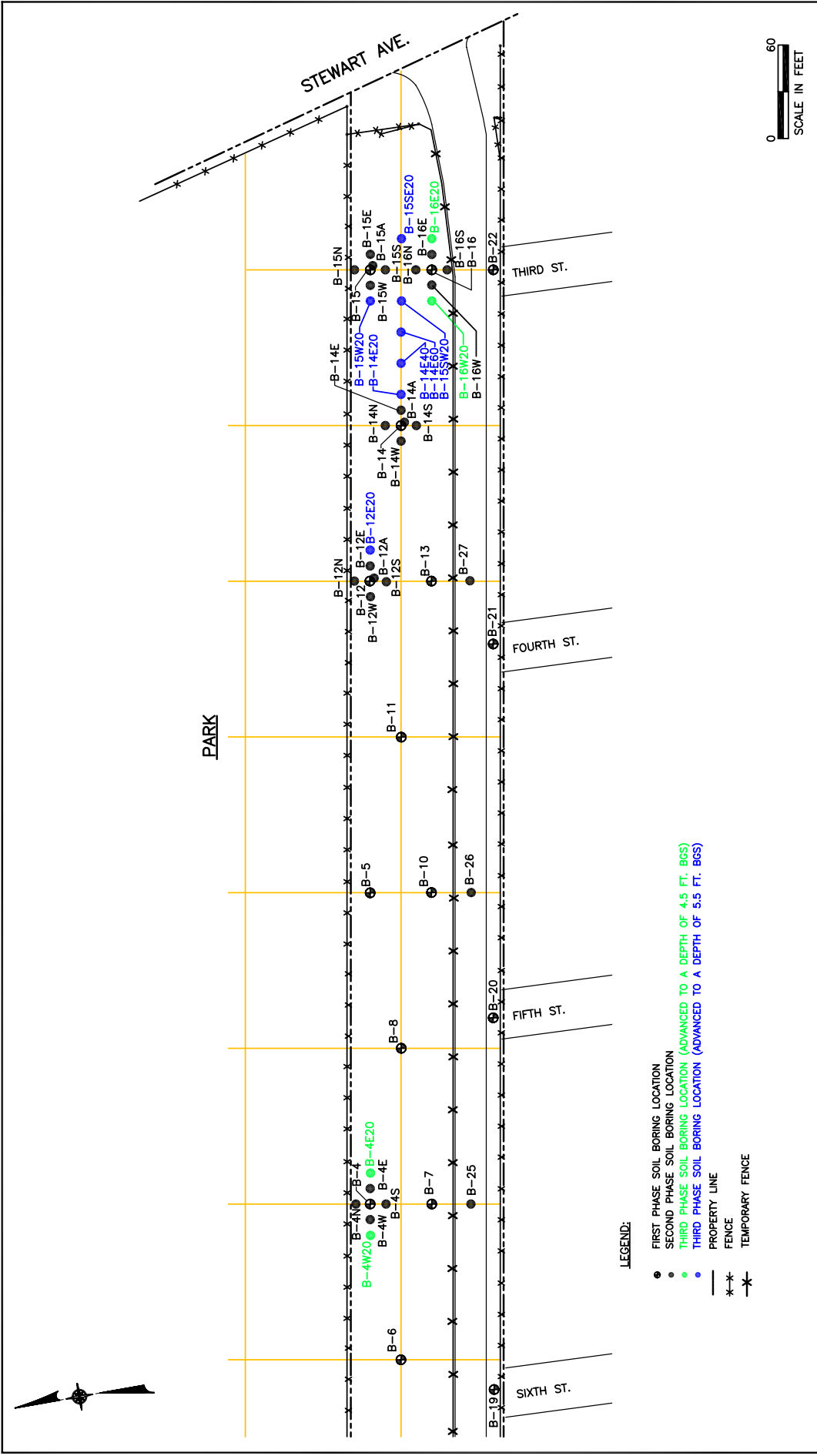
- FIRST PHASE SOIL BORING LOCATION
- SECOND PHASE SOIL BORING LOCATION (ADVANCED TO A DEPTH OF 3.5 FT. BGS)
- SECOND PHASE SOIL BORING LOCATION (ADVANCED TO A DEPTH OF 7.5 FT. BGS)
- - - FENCE
- PROPERTY LINE
- x - TEMPORARY FENCE



NORTHROP GRUMMAN CORPORATION
 BETHPAGE FACILITY
 PLANT 24 ACCESS ROAD SITE
SECOND PHASE FIELD PROGRAM
SOIL BORING LOCATION PLAN

d Dvirka and Bartilucci
 Consulting Engineers
 A Division of William F. Cosulich Associates, P.C.

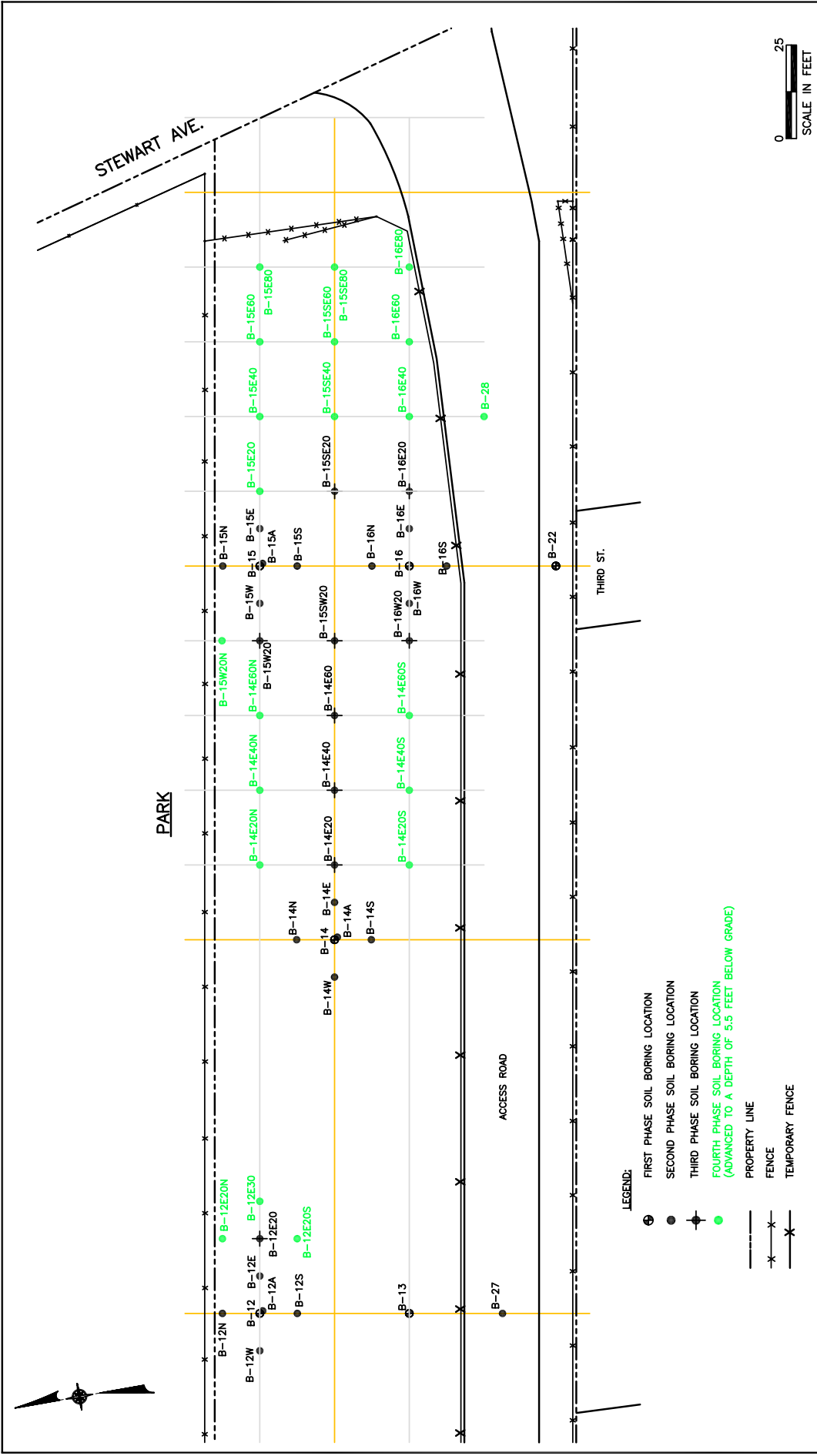
FIGURE 3-2



NORTHROP GRUMMAN CORPORATION
 BETHPAGE FACILITY
 PLANT 24 ACCESS ROAD SITE
THIRD PHASE FIELD PROGRAM
SOIL BORING LOCATION PLAN

d Dvirka and Bartilucci
 Consulting Engineers
 A Division of William F. Cosulich Associates, P.C.

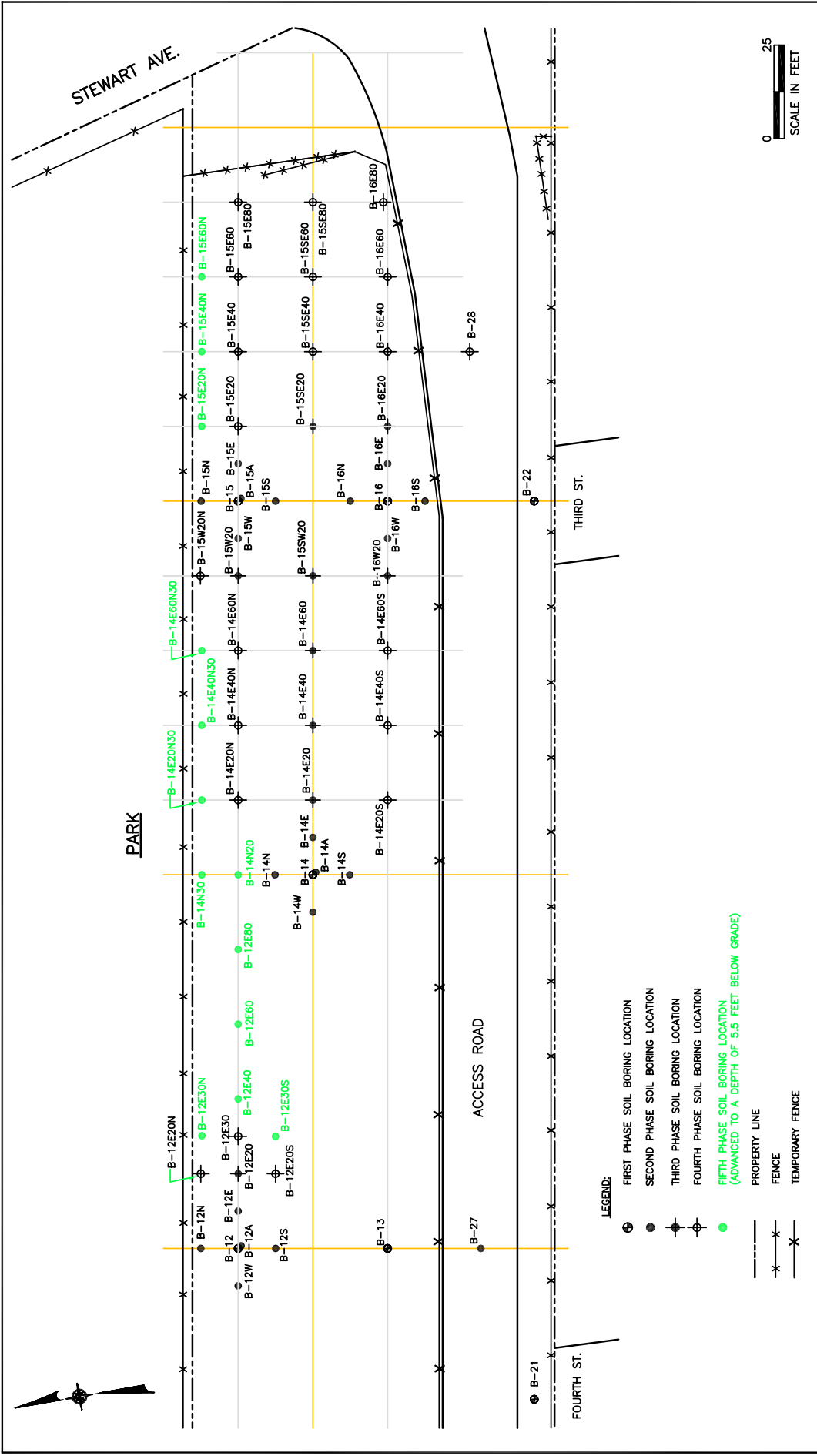
FIGURE 3-3



NORTHROP GRUMMAN CORPORATION
 BETHPAGE FACILITY
 PLANT 24 ACCESS ROAD SITE
FOURTH PHASE FIELD PROGRAM
SOIL BORING LOCATION PLAN

d Dvirka and Bartilucci
 Consulting Engineers
 A Division of William F. Cosulich Associates, P.C.

FIGURE 3-4

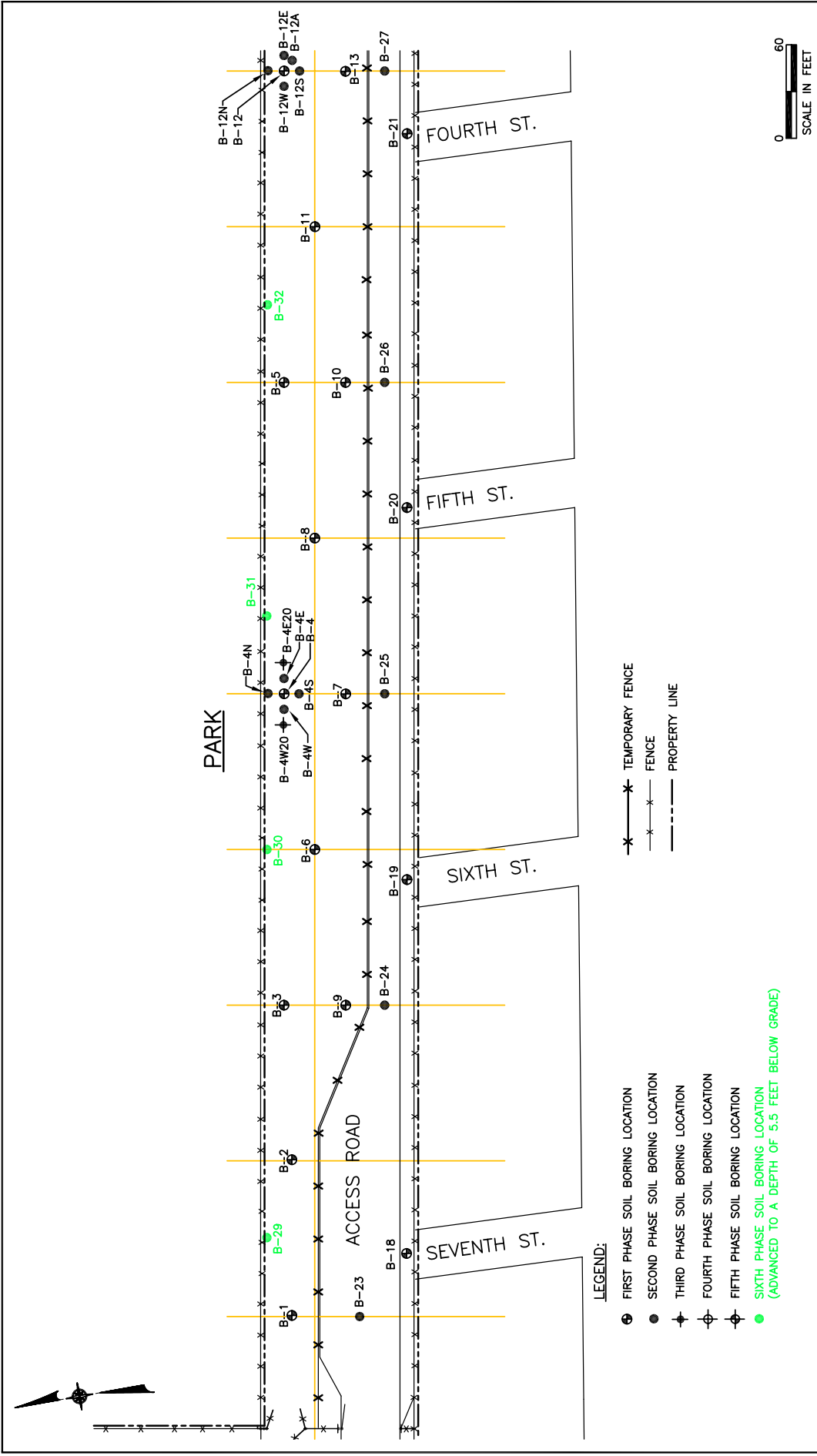


NORTHROP GRUMMAN CORPORATION
 BETHPAGE FACILITY
 PLANT 24 ACCESS ROAD SITE

FIFTH PHASE FIELD PROGRAM SOIL BORING LOCATION PLAN

FIGURE 3-5

Dvirka and Bartilucci
 Consulting Engineers
 A Division of William F. Cosulich Associates, P.C.



NORTHROP GRUMMAN CORPORATION
 BETHPAGE FACILITY
 PLANT 24 ACCESS ROAD SITE
SIXTH PHASE FIELD PROGRAM
SOIL BORING LOCATION PLAN - WEST

d Dvirka and Bartilucci
 Consulting Engineers
 A Division of William F. Cosulich Associates, P.C.

FIGURE 3-6



STEWART AVE.

THIRD ST

ACCESS ROAD

- LEGEND:**
- FIRST PHASE SOIL BORING LOCATION
 - SECOND PHASE SOIL BORING LOCATION
 - THIRD PHASE SOIL BORING LOCATION
 - FOURTH PHASE SOIL BORING LOCATION
 - FIFTH PHASE SOIL BORING LOCATION
 - SIXTH PHASE SOIL BORING LOCATION
(ADVANCED TO A DEPTH OF 3.5 FEET BELOW GRADE)
 - SIXTH PHASE SOIL BORING LOCATION
(ADVANCED TO A DEPTH OF 7.5 FEET BELOW GRADE)
 - PROPERTY LINE
 - FENCE
 - TEMPORARY FENCE



PROJECT NO.	1572-06
DATE	MARCH 2001
SCALE	AS NOTED

SIXTH PHASE FIELD PROGRAM
SOIL BORING LOCATION PLAN - EAST

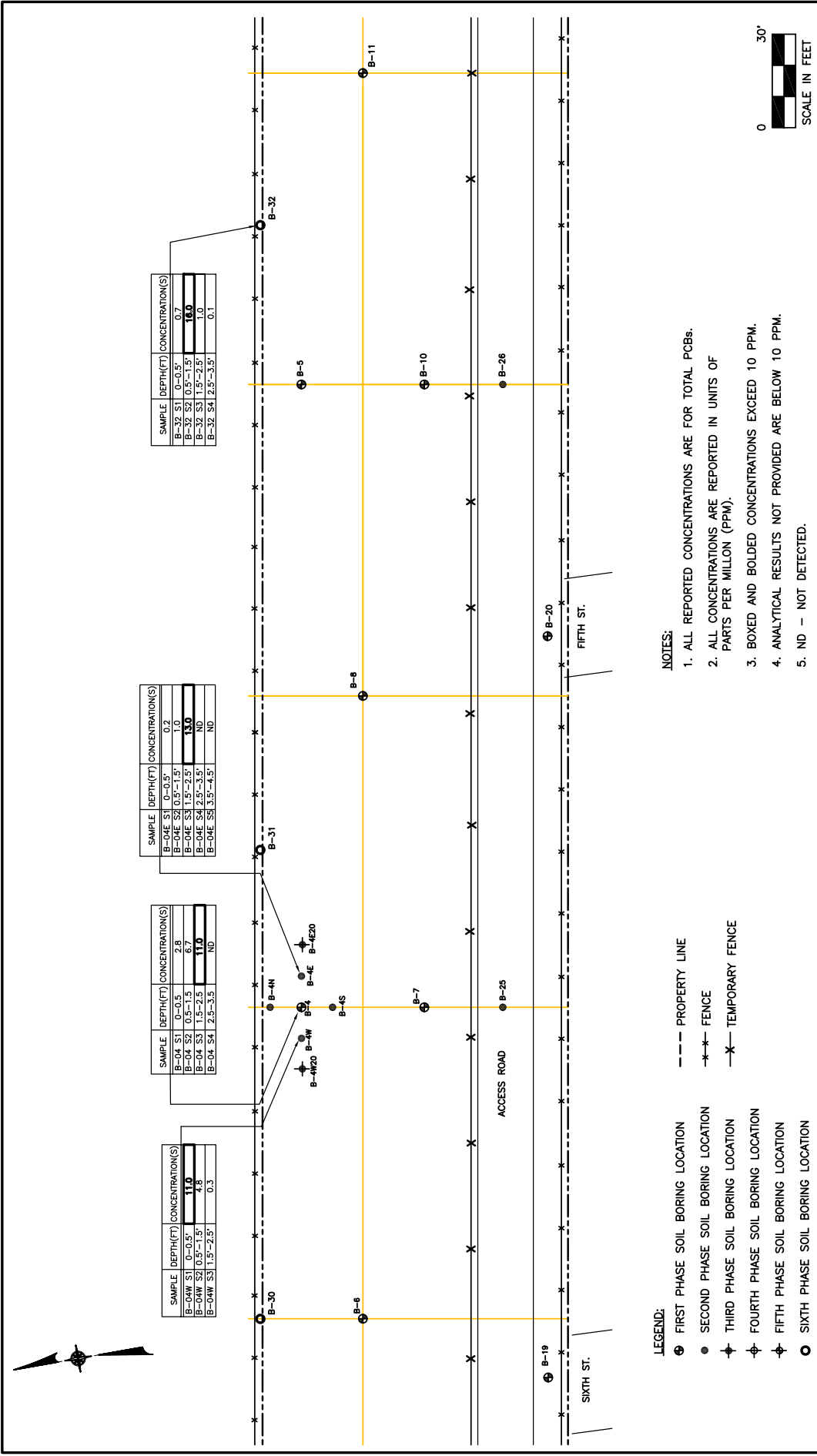
NORTHROP GRUMMAN CORPORATION
BETHPAGE FACILITY
PLANT 24 ACCESS ROAD SITE



DVIRKA AND BARTILUCCI
CONSULTING ENGINEERS
A DIVISION OF WILLIAM F. COSGROVE ASSOCIATES, P.C.

UNIVERSITY OF THE STATE OF NEW YORK TO BE FILED IN THE OFFICE OF THE CLERK OF THE SUPREME COURT IN THE COUNTY OF SUFFOLK	
FILED NUMBER	DATE
INDEXED IN	INDEXED IN
CLASSIFIED IN	CLASSIFIED IN

NO.	DATE	DESCRIPTION



LEGEND:

- ⊕ FIRST PHASE SOIL BORING LOCATION
- SECOND PHASE SOIL BORING LOCATION
- ⊕ THIRD PHASE SOIL BORING LOCATION
- ⊕ FOURTH PHASE SOIL BORING LOCATION
- ⊕ FIFTH PHASE SOIL BORING LOCATION
- SIXTH PHASE SOIL BORING LOCATION
- PROPERTY LINE
- *- FENCE
- X- TEMPORARY FENCE

NOTES:

1. ALL REPORTED CONCENTRATIONS ARE FOR TOTAL PCBs.
2. ALL CONCENTRATIONS ARE REPORTED IN UNITS OF PARTS PER MILLION (PPM).
3. BOXED AND BOLDED CONCENTRATIONS EXCEED 10 PPM.
4. ANALYTICAL RESULTS NOT PROVIDED ARE BELOW 10 PPM.
5. ND - NOT DETECTED.

SCALE IN FEET

0 30'

FIGURE 4-1

SUMMARY OF PCB CONCENTRATIONS
NORTH CENTRAL PORTION

NORTHROP GRUMMAN CORPORATION
BETHPAGE FACILITY
PLANT 24 ACCESS ROAD SITE

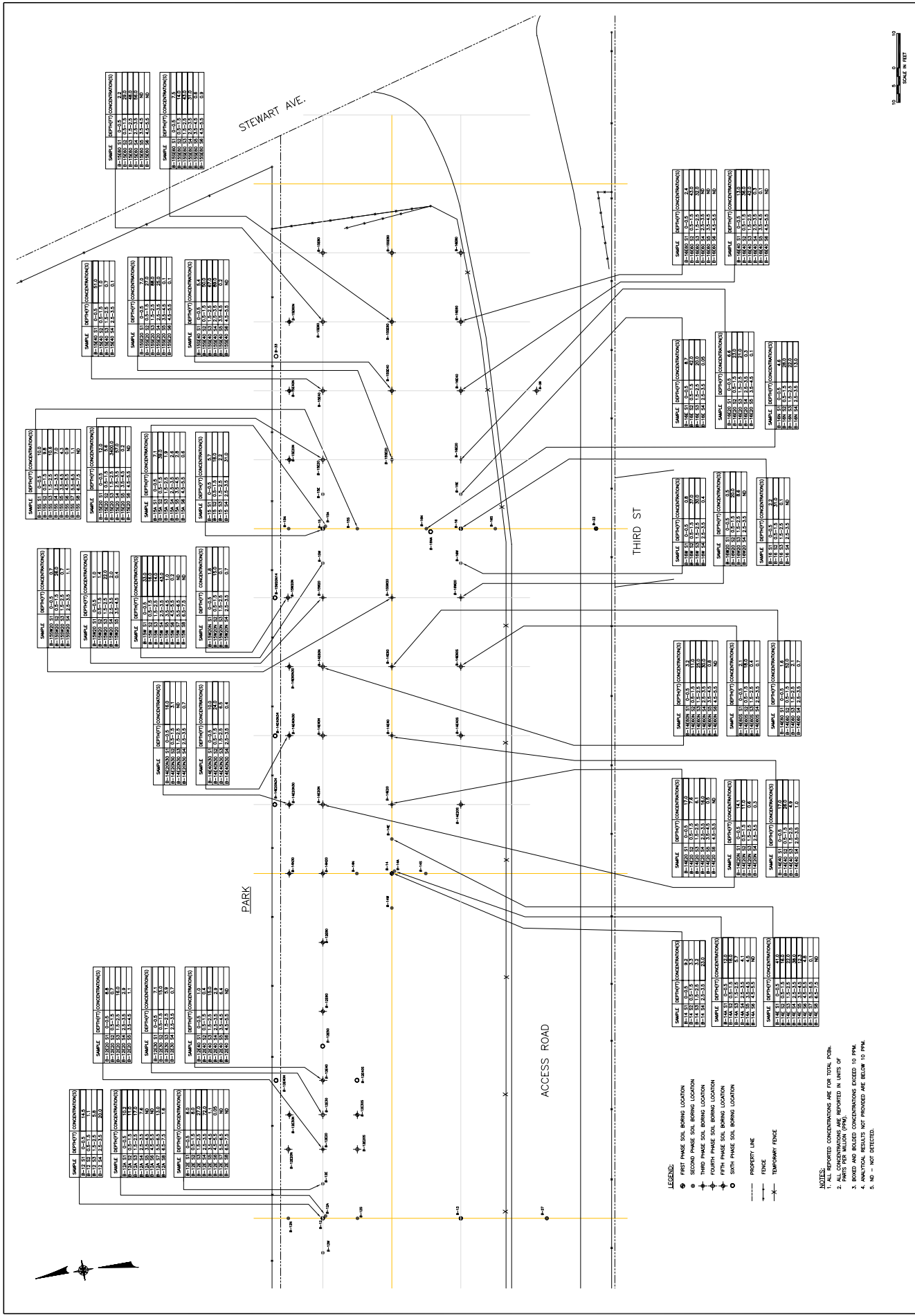
Dvirka and Bartilucci
Consulting Engineers
A Division of William F. Cesulich Associates, P.C.

SUMMARY OF PCB CONCENTRATIONS
EASTERN PORTION

NORTHROP GRUMMAN CORPORATION
BETHPAGE FACILITY
PLANT 24 ACCESS ROAD SITE



UNIVERSITY OF THE STATE OF NEW YORK
TO THIS DOCUMENT IS A VIOLATION OF
SECTION 170.0
SECTION 170.1
SECTION 170.2
SECTION 170.3
SECTION 170.4
SECTION 170.5
SECTION 170.6
SECTION 170.7
SECTION 170.8
SECTION 170.9
SECTION 170.10
SECTION 170.11
SECTION 170.12
SECTION 170.13
SECTION 170.14
SECTION 170.15
SECTION 170.16
SECTION 170.17
SECTION 170.18
SECTION 170.19
SECTION 170.20
SECTION 170.21
SECTION 170.22
SECTION 170.23
SECTION 170.24
SECTION 170.25
SECTION 170.26
SECTION 170.27
SECTION 170.28
SECTION 170.29
SECTION 170.30
SECTION 170.31
SECTION 170.32
SECTION 170.33
SECTION 170.34
SECTION 170.35
SECTION 170.36
SECTION 170.37
SECTION 170.38
SECTION 170.39
SECTION 170.40
SECTION 170.41
SECTION 170.42
SECTION 170.43
SECTION 170.44
SECTION 170.45
SECTION 170.46
SECTION 170.47
SECTION 170.48
SECTION 170.49
SECTION 170.50
SECTION 170.51
SECTION 170.52
SECTION 170.53
SECTION 170.54
SECTION 170.55
SECTION 170.56
SECTION 170.57
SECTION 170.58
SECTION 170.59
SECTION 170.60
SECTION 170.61
SECTION 170.62
SECTION 170.63
SECTION 170.64
SECTION 170.65
SECTION 170.66
SECTION 170.67
SECTION 170.68
SECTION 170.69
SECTION 170.70
SECTION 170.71
SECTION 170.72
SECTION 170.73
SECTION 170.74
SECTION 170.75
SECTION 170.76
SECTION 170.77
SECTION 170.78
SECTION 170.79
SECTION 170.80
SECTION 170.81
SECTION 170.82
SECTION 170.83
SECTION 170.84
SECTION 170.85
SECTION 170.86
SECTION 170.87
SECTION 170.88
SECTION 170.89
SECTION 170.90
SECTION 170.91
SECTION 170.92
SECTION 170.93
SECTION 170.94
SECTION 170.95
SECTION 170.96
SECTION 170.97
SECTION 170.98
SECTION 170.99
SECTION 170.100



- LEGEND:
- FIRST PHASE SOIL BORING LOCATION
 - SECOND PHASE SOIL BORING LOCATION
 - ⊕ THIRD PHASE SOIL BORING LOCATION
 - ⊖ FOURTH PHASE SOIL BORING LOCATION
 - ⊗ FIFTH PHASE SOIL BORING LOCATION
 - ⊘ SIXTH PHASE SOIL BORING LOCATION
 - PROPERTY LINE
 - FENCE
 - - - - - TEMPORARY FENCE

- NOTES:
1. REPORTED CONCENTRATIONS ARE FOR TOTAL PCBs.
 2. ALL CONCENTRATIONS ARE REPORTED IN UNITS OF PARTS PER MILLION (PPM).
 3. BODIES AND BODDED CONCENTRATIONS EXCEED 10 PPM.
 4. CONCENTRATIONS NOT PRINTED ARE BELOW 10 PPM.
 5. ND - NOT DETECTED.

NO.	DATE	REVISION	BY	CHK.

APPENDIX B

**PCB INVESTIGATION/DELINEATION PROGRAM
SOIL SAMPLE ANALYTICAL RESULTS**

FIRST PHASE SOIL SAMPLING RESULTS

TABLE B-1
NORTHROP GRUMMAN CORPORATION
PLANT 24 ACCESS ROAD SITE
PCB INVESTIGATION/DELINEATION PROGRAM - FIRST PHASE
SOIL SAMPLING RESULTS
POLYCHLORINATED BIPHENYLS

SAMPLE IDENTIFICATION	B-01 S1	B-01 S2	B-02 S1	B-02 S2	B-03 S1	B-03 S2	B-03 S3	B-03 S4	CONTRACT REQUIRED DETECTION LIMIT
SAMPLE DEPTH	0 - 0.5'	0.5' - 1.5'	0 - 0.5'	0.5' - 1.5'	0 - 0.5'	0.5' - 1.5'	1.5' - 2.5'	2.5' - 3.5'	
DATE OF COLLECTION	6/02/99	6/02/99	6/02/99	6/02/99	6/02/99	6/02/99	6/02/99	6/02/99	
DILUTION FACTOR	1	1	1	1	1	10	1	1	
PERCENT SOLIDS	93	97	96	95	95	94	96	90	
UNITS	(mg/kg)	(mg/kg)	(mg/kg)	(mg/kg)	(mg/kg)	(mg/kg)	(mg/kg)	(mg/kg)	(mg/kg)
Atroclor-1016	U	U	U	U	U	U	U	U	0.033
Atroclor-1221	U	U	U	U	U	U	U	U	0.067
Atroclor-1232	U	U	U	U	U	U	U	U	0.033
Atroclor-1242	U	U	U	U	U	U	U	U	0.033
Atroclor-1248	U	U	0.160	0.055	0.067	U	0.092	0.280	0.033
Atroclor-1254	U	U	U	U	U	7.200	U	U	0.033
Atroclor-1260	0.140	U	0.140	0.150	0.160	U	U	0.410	0.033
TOTAL PCBs	0.140	0	0.300	0.205	0.227	7.200	0.092	0.690	

Qualifiers:

U: Compound analyzed for but not detected.

P: Concentration estimated, possibly biased low since primary and confirmation column concentrations had a percent difference >25%; lower value reported.

Notes:

☐: Value for Total PCBs exceeds 10 parts per million (ppm).

TABLE B-1 (continued)
 NORTHROP GRUMMAN CORPORATION
 PLANT 24 ACCESS ROAD SITE
 PCB INVESTIGATION/DELINEATION PROGRAM - FIRST PHASE
 SOIL SAMPLING RESULTS
 POLYCHLORINATED BIPHENYLS

SAMPLE IDENTIFICATION	B-04 S1	B-04 S2	B-04 S3	B-04 S4	B-05 S1	B-05 S2	B-05 S3	B-05 S4	CONTRACT REQUIRED DETECTION LIMIT
	0 - 0.5' 6/02/99 5 75 (mg/kg)	0.5' - 1.5' 6/02/99 10 86 (mg/kg)	1.5' - 2.5' 6/02/99 20 83 (mg/kg)	2.5' - 3.5' 6/02/99 1 83 (mg/kg)	0 - 0.5' 6/02/99 1 95 (mg/kg)	0.5' - 1.5' 6/02/99 1 93 (mg/kg)	1.5' - 2.5' 6/02/99 1 87 (mg/kg)	2.5' - 3.5' 6/02/99 1 99 (mg/kg)	
Aroclor-1016	U	U	U	U	U	U	U	U	0.033
Aroclor-1221	U	U	U	U	U	U	U	U	0.067
Aroclor-1232	U	U	U	U	U	U	U	U	0.033
Aroclor-1242	U	U	U	U	U	U	U	U	0.033
Aroclor-1248	2.800	6.700	11.000	U	1.000	1.200	1.000	U	0.033
Aroclor-1254	U	U	U	U	U	U	U	U	0.033
Aroclor-1260	U	U	U	U	0.210	0.150	U	U	0.033
TOTAL PCBs	2.800	6.700	11.000	0	1.210	1.350	1.000	0	

Qualifiers:

U: Compound analyzed for but not detected.

P: Concentration estimated, possibly biased low since primary and confirmation column concentrations had a percent difference >25%; lower value reported.

Notes:

☐: Value for Total PCBs exceeds 10 parts per million (ppm).

TABLE B-1 (continued)
 NORTHROP GRUMMAN CORPORATION
 PLANT 24 ACCESS ROAD SITE
 PCB INVESTIGATION/DELINEATION PROGRAM - FIRST PHASE
 SOIL SAMPLING RESULTS
 POLYCHLORINATED BIPHENYLS

SAMPLE IDENTIFICATION	B-06 S1	B-06 S2	B-07 S1	B-07 S2	B-08 S1	B-08 S2	B-09 S1	B-09 S2	CONTRACT REQUIRED DETECTION LIMIT
	0 - 0.5' 6/02/99 1	0.5' - 1.5' 6/02/99 1	0 - 0.5' 6/02/99 1	0.5' - 1.5' 6/02/99 1	0 - 0.5' 6/02/99 1	0.5' - 1.5' 6/02/99 1	0 - 0.5' 6/02/99 1	0.5' - 1.5' 6/02/99 1	
PERCENT SOLIDS	97	90	89	85	89	98	89	85	(mg/kg)
UNITS	(mg/kg)	(mg/kg)	(mg/kg)	(mg/kg)	(mg/kg)	(mg/kg)	(mg/kg)	(mg/kg)	(mg/kg)
Atroclor-1016	U	U	U	U	U	U	U	U	0.033
Atroclor-1221	U	U	U	U	U	U	U	U	0.067
Atroclor-1232	U	U	U	U	U	U	U	U	0.033
Atroclor-1242	U	U	U	U	U	U	U	U	0.033
Atroclor-1248	U	U	0.150	U	U	0.500	1.000	U	0.033
Atroclor-1254	U	U	U	U	U	U	U	U	0.033
Atroclor-1260	U	U	U	U	U	0.130	0.130	U	0.033
TOTAL PCBs	0	0	0.150	0	0	0.630	1.130	0	

Qualifiers:

U: Compound analyzed for but not detected.

P: Concentration estimated, possibly biased low since primary and confirmation column concentrations had a percent difference >25%; lower value reported.

Notes:

☐: Value for Total PCBs exceeds 10 parts per million (ppm).

TABLE B-1 (continued)
 NORTHROP GRUMMAN CORPORATION
 PLANT 24 ACCESS ROAD SITE
 PCB INVESTIGATION/DELINEATION PROGRAM - FIRST PHASE
 SOIL SAMPLING RESULTS
 POLYCHLORINATED BIPHENYLS

SAMPLE IDENTIFICATION	B-10 S1	B-10 S2	B-11 S1	B-11 S2	B-12 S1	B-12 S2	B-12 S3	B-12 S4	CONTRACT REQUIRED DETECTION LIMIT
SAMPLE DEPTH	0 - 0.5'	0.5' - 1.5'	0 - 0.5'	0.5' - 1.5'	0 - 0.5'	0.5' - 1.5'	1.5' - 2.5'	2.5' - 3.5'	
DATE OF COLLECTION	6/02/99	6/02/99	6/02/99	6/02/99	6/02/99	6/02/99	6/02/99	6/02/99	
DILUTION FACTOR	1	1	1	1	20	1	10	50	
PERCENT SOLIDS	88	90	91	88	98	93	88	91	
UNITS	(mg/kg)	(mg/kg)	(mg/kg)	(mg/kg)	(mg/kg)	(mg/kg)	(mg/kg)	(mg/kg)	(mg/kg)
Atroclor-1016	U	U	U	U	U	U	U	U	0.033
Atroclor-1221	U	U	U	U	U	U	U	U	0.067
Atroclor-1232	U	U	U	U	U	U	U	U	0.033
Atroclor-1242	U	U	U	U	U	U	U	U	0.033
Atroclor-1248	0.067	U	U	U	13.000	0.900	5.800	20.000	0.033
Atroclor-1254	U	U	U	U	U	0.200	U	U	0.033
Atroclor-1260	U	U	U	U	1.500	U	U	U	0.033
TOTAL PCBs	0.067	0	0	0	14.500	1.100	5.800	20.000	

Qualifiers:

- U: Compound analyzed for but not detected.
- P: Concentration estimated, possibly biased low since primary and confirmation column concentrations had a percent difference >25%; lower value reported.

Notes:

☐: Value for Total PCBs exceeds 10 parts per million (ppm).

TABLE B-1 (continued)
 NORTHROP GRUMMAN CORPORATION
 PLANT 24 ACCESS ROAD SITE
 PCB INVESTIGATION/DELINEATION PROGRAM - FIRST PHASE
 SOIL SAMPLING RESULTS
 POLYCHLORINATED BIPHENYLS

SAMPLE IDENTIFICATION	B-13 S1	B-13 S2	B-14 S1	B-14 S2	B-14 S3	B-14 S4	B-15 S1	B-15 S2	CONTRACT REQUIRED DETECTION LIMIT
SAMPLE DEPTH	0 - 0.5'	0.5' - 1.5'	0 - 0.5'	0.5' - 1.5'	1.5' - 2.5'	2.5' - 3.5'	0 - 0.5'	0.5' - 1.5'	(mg/kg)
DATE OF COLLECTION	6/02/99	6/02/99	6/02/99	6/02/99	6/02/99	6/02/99	6/02/99	6/02/99	(mg/kg)
DILUTION FACTOR	1	1	10	5	1	50	10	30	(mg/kg)
PERCENT SOLIDS	93	89	93	86	96	69	77	94	(mg/kg)
UNITS	(mg/kg)	(mg/kg)	(mg/kg)	(mg/kg)	(mg/kg)	(mg/kg)	(mg/kg)	(mg/kg)	(mg/kg)
Atroclor-1016	U	U	U	U	U	U	U	U	0.033
Atroclor-1221	U	U	U	U	U	U	U	U	0.067
Atroclor-1232	U	U	U	U	U	U	U	U	0.033
Atroclor-1242	U	U	U	U	U	U	U	U	0.033
Atroclor-1248	2.000	0.230	7.600	2.400	2.500	U	5.700	18.000	0.033
Atroclor-1254	U	0.087	1.600	0.870	0.680	U	U	U	0.033
Atroclor-1260	U	U	U	U	U	23.000	U	U	0.033
TOTAL PCBs	2.000	0.317	9.200	3.270	3.180	23.000	5.700	18.000	

Qualifiers:

U: Compound analyzed for but not detected.

P: Concentration estimated, possibly biased low since primary and confirmation column concentrations had a percent difference >25%; lower value reported.

Notes:

☐: Value for Total PCBs exceeds 10 parts per million (ppm).

TABLE B-1 (continued)
 NORTHROP GRUMMAN CORPORATION
 PLANT 24 ACCESS ROAD SITE
 PCB INVESTIGATION/DELINEATION PROGRAM - FIRST PHASE
 SOIL SAMPLING RESULTS
 POLYCHLORINATED BIPHENYLS

SAMPLE IDENTIFICATION	B-15 S3	B-15 S4	B-16 S1	B-16 S2	B-16 S3	B-16 S4	B-17 S1	B-17 S2	CONTRACT REQUIRED DETECTION LIMIT
SAMPLE DEPTH	1.5' - 2.5'	2.5' - 3.5'	0 - 0.5'	0.5' - 1.5'	1.5' - 2.5'	2.5' - 3.5'	0 - 0.5'	0.5 - 1.5'	(mg/kg)
DATE OF COLLECTION	6/02/99	6/02/99	6/02/99	6/02/99	6/02/99	6/02/99	6/03/99	6/03/99	(mg/kg)
DILUTION FACTOR	1	50	5	50	1	1	1	1	(mg/kg)
PERCENT SOLIDS	87	93	94	93	85	82	95	84	(mg/kg)
UNITS	(mg/kg)	(mg/kg)	(mg/kg)	(mg/kg)	(mg/kg)	(mg/kg)	(mg/kg)	(mg/kg)	(mg/kg)
Aroclor-1016	U	U	U	U	U	U	U	U	0.033
Aroclor-1221	U	U	U	U	U	U	U	U	0.067
Aroclor-1232	U	U	U	U	U	U	U	U	0.033
Aroclor-1242	U	U	U	U	U	U	U	U	0.033
Aroclor-1248	2.200	31.000	2.000	31.000	0.061	0.061	0.370	1.000	0.033
Aroclor-1254	U	U	U	U	U	U	U	U	0.033
Aroclor-1260	U	U	0.180	U	U	U	U	U	0.033
TOTAL PCBs	2.200	31.000	2.180	31.000	0.061	0	0.370	1.000	

Qualifiers:

U: Compound analyzed for but not detected.
 P: Concentration estimated, possibly biased low since primary and confirmation column concentrations had a percent difference >25%; lower value reported.

Notes:

☐: Value for Total PCBs exceeds 10 parts per million (ppm).

TABLE B-1 (continued)
 NORTHROP GRUMMAN CORPORATION
 PLANT 24 ACCESS ROAD SITE
 PCB INVESTIGATION/DELINEATION PROGRAM - FIRST PHASE
 SOIL SAMPLING RESULTS
 POLYCHLORINATED BIPHENYLS

SAMPLE IDENTIFICATION	B-17 S3	B-17 S4	B-18 S1	B-18 S2	B-19 S1	B-19 S2	B-20 S1	B-20 S2	CONTRACT REQUIRED DETECTION LIMIT
	1.5' - 2.5' 6/03/99 1	2.5' - 3.5' 6/03/99 1	0 - 0.5' 6/03/99 1	0.5' - 1.5' 6/03/99 1	0 - 0.5' 6/03/99 1	0.5' - 1.5' 6/03/99 1	0 - 0.5' 6/03/99 1	0.5' - 1.5' 6/03/99 1	
DILUTION FACTOR	1	1	1	1	1	1	1	1	
PERCENT SOLIDS	89	90	93	86	94	87	95	96	
UNITS	(mg/kg)	(mg/kg)	(mg/kg)	(mg/kg)	(mg/kg)	(mg/kg)	(mg/kg)	(mg/kg)	(mg/kg)
Atroclor-1016	U	U	U	U	U	U	U	U	0.033
Atroclor-1221	U	U	U	U	U	U	U	U	0.067
Atroclor-1232	U	U	U	U	U	U	U	U	0.033
Atroclor-1242	U	U	U	U	U	U	U	U	0.033
Atroclor-1248	0.140	U	0.042	0.520	1.700	0.410	0.120	U	0.033
Atroclor-1254	U	U	U	U	U	U	U	U	0.033
Atroclor-1260	U	U	U	U	U	U	U	U	0.033
TOTAL PCBs	0.140	0	0.042	0.520	1.700	0.410	0.120	0	

Qualifiers:

U: Compound analyzed for but not detected.

P: Concentration estimated, possibly biased low since primary and confirmation column concentrations had a percent difference >25%; lower value reported.

Notes:

☐: Value for Total PCBs exceeds 10 parts per million (ppm).

TABLE B-1 (continued)
 NORTHROP GRUMMAN CORPORATION
 PLANT 24 ACCESS ROAD SITE
 PCB INVESTIGATION/DELINEATION PROGRAM - FIRST PHASE
 SOIL SAMPLING RESULTS
 POLYCHLORINATED BIPHENYLS

SAMPLE IDENTIFICATION	B-21 S1	B-21 S2	B-22 S1	B-22 S2	CONTRACT REQUIRED DETECTION LIMIT
SAMPLE DEPTH	0 - 0.5'	0.5' - 1.5'	0 - 0.5'	0.5 - 1.5'	
DATE OF COLLECTION	6/03/99	6/03/99	6/03/99	6/03/99	
DILUTION FACTOR	1	1	1	1	
PERCENT SOLIDS	91	94	90	89	
UNITS	(mg/kg)	(mg/kg)	(mg/kg)	(mg/kg)	(mg/kg)
Aroclor-1016	U	U	U	U	0.033
Aroclor-1221	U	U	U	U	0.067
Aroclor-1232	U	U	U	U	0.033
Aroclor-1242	U	U	U	U	0.033
Aroclor-1248	1.600	U	0.079	U	0.033
Aroclor-1254	U	U	U	U	0.033
Aroclor-1260	U	U	U	U	0.033
TOTAL PCBs	1.600	0	0.079	0	

Qualifiers:

U: Compound analyzed for but not detected.

P: Concentration estimated, possibly biased low since primary and confirmation column concentrations had a percent difference >25%; lower value reported.

Notes:

☐: Value for Total PCBs exceeds 10 parts per million (ppm).

SECOND PHASE SOIL SAMPLING RESULTS

TABLE B-2
NORTHROP GRUMMAN CORPORATION
PLANT 24 ACCESS ROAD SITE
PCB INVESTIGATION/DELINEATION PROGRAM - SECOND PHASE
SOIL SAMPLING RESULTS
POLYCHLORINATED BIPHENYLS

SAMPLE IDENTIFICATION	B-04N S1	B-04N S2	B-04N S3	B-04S S1	B-04S S2	B-04S S3	B-04E S1	B-04E S2	CONTRACT REQUIRED DETECTION LIMIT
SAMPLE DEPTH	0 - 0.5'	0.5' - 1.5'	1.5' - 2.5'	0 - 0.5'	0.5' - 1.5'	1.5' - 2.5'	0 - 0.5'	0.5' - 1.5'	
DATE OF COLLECTION	10/22/99	10/22/99	10/22/99	10/22/99	10/22/99	10/22/99	10/22/99	10/22/99	
DILUTION FACTOR	10	1	1	10	1	10	1	10	
PERCENT SOLIDS	95	88	88	91	84	91	96	86	
UNITS	(mg/kg)	(mg/kg)	(mg/kg)	(mg/kg)	(mg/kg)	(mg/kg)	(mg/kg)	(mg/kg)	(mg/kg)
Aroclor-1016	U	U	U	U	U	U	U	U	0.033
Aroclor-1221	U	U	U	U	U	U	U	U	0.067
Aroclor-1232	U	U	U	U	U	U	U	U	0.033
Aroclor-1242	U	U	U	U	U	U	U	U	0.033
Aroclor-1248	1.100	U	U	8.700	0.560	1.300	0.190	1.000	0.033
Aroclor-1254	U	U	U	U	U	U	U	U	0.033
Aroclor-1260	U	U	U	U	U	U	0.045	U	0.033
TOTAL PCBs	1.100	0	0	8.700	0.560	1.300	0.235	1.000	

Qualifiers:

U: Compound analyzed for but not detected.

P: Concentration estimated, possibly biased low since primary and confirmation column concentrations had a percent difference >25%; lower value reported.

Notes:

☐: Value for Total PCBs exceeds 10 parts per million (ppm).

TABLE B-2 (continued)
 NORTHROP GRUMMAN CORPORATION
 PLANT 24 ACCESS ROAD SITE
 PCB INVESTIGATION/DELINEATION PROGRAM - SECOND PHASE
 SOIL SAMPLING RESULTS
 POLYCHLORINATED BIPHENYLS

SAMPLE IDENTIFICATION	B-04E S3	B-04E S4	B-04E S5	B-04W S1	B-04W S2	B-04W S3	B-12A S1	B-12A S2	CONTRACT REQUIRED DETECTION LIMIT
SAMPLE DEPTH	1.5' - 2.5'	2.5' - 3.5'	3.5' - 4.5'	0 - 0.5'	0.5' - 1.5'	1.5' - 2.5'	0 - 0.5'	0.5' - 1.5'	
DATE OF COLLECTION	10/22/99	10/22/99	10/22/99	10/22/99	10/22/99	10/22/99	10/22/99	10/22/99	
DILUTION FACTOR	10	1	1	10	10	1	10	10	
PERCENT SOLIDS	90	91	81	96	94	86	95	82	
UNITS	(mg/kg)	(mg/kg)	(mg/kg)	(mg/kg)	(mg/kg)	(mg/kg)	(mg/kg)	(mg/kg)	(mg/kg)
Aroclor-1016	U	U	U	U	U	U	U	U	0.033
Aroclor-1221	U	U	U	U	U	U	U	U	0.067
Aroclor-1232	U	U	U	U	U	U	U	U	0.033
Aroclor-1242	U	U	U	U	U	U	U	U	0.033
Aroclor-1248	13.000	U	U	11.000	4.200	0.190	9.700	11.000	0.033
Aroclor-1254	U	U	U	U	U	U	U	U	0.033
Aroclor-1260	U	U	U	U	0.560	0.069	0.480	U	0.033
TOTAL PCBs	13.000	0	0	11.000	4.760	0.259	10.180	11.000	

Qualifiers:

U: Compound analyzed for but not detected.

P: Concentration estimated, possibly biased low since primary and confirmation column concentrations had a percent difference >25%; lower value reported.

Notes:

☐: Value for Total PCBs exceeds 10 parts per million (ppm).

TABLE B-2 (continued)
 NORTHROP GRUMMAN CORPORATION
 PLANT 24 ACCESS ROAD SITE
 PCB INVESTIGATION/DELINEATION PROGRAM - SECOND PHASE
 SOIL SAMPLING RESULTS
 POLYCHLORINATED BIPHENYLS

SAMPLE IDENTIFICATION	B-12A S3	B-12A S4	B-12A S5	B-12A S6	B-12A S7	B-12A S8	B-12N S1	B-12N S2	CONTRACT REQUIRED DETECTION LIMIT
SAMPLE DEPTH	1.5' - 2.5'	2.5' - 3.5'	3.5' - 4.5'	4.5' - 5.5'	5.5' - 6.5'	6.5' - 7.5'	0 - 0.5'	0.5' - 1.5'	
DATE OF COLLECTION	10/22/99	10/22/99	10/22/99	10/22/99	10/22/99	10/22/99	10/22/99	10/22/99	
DILUTION FACTOR	10	10	1	1	10	1	10	10	
PERCENT SOLIDS	96	90	90	92	94	97	96	94	
UNITS	(mg/kg)	(mg/kg)	(mg/kg)	(mg/kg)	(mg/kg)	(mg/kg)	(mg/kg)	(mg/kg)	(mg/kg)
Aroclor-1016	U	U	U	U	U	U	U	U	0.033
Aroclor-1221	U	U	U	U	U	U	U	U	0.067
Aroclor-1232	U	U	U	U	U	U	U	U	0.033
Aroclor-1242	U	U	U	U	U	U	U	U	0.033
Aroclor-1248	17.000	7.600	7.600	7.600	13.000	1.600	2.200	7.400	0.033
Aroclor-1254	U	U	U	U	U	U	U	U	0.033
Aroclor-1260	U	U	U	U	U	U	U	U	0.033
TOTAL PCBs	17.000	7.600	0	0	13.000	1.600	2.200	7.400	

Qualifiers:

- U: Compound analyzed for but not detected.
- P: Concentration estimated, possibly biased low since primary and confirmation column concentrations had a percent difference >25%; lower value reported.

Notes:

: Value for Total PCBs exceeds 10 parts per million (ppm).

TABLE B-2 (continued)
 NORTHROP GRUMMAN CORPORATION
 PLANT 24 ACCESS ROAD SITE
 PCB INVESTIGATION/DELINEATION PROGRAM - SECOND PHASE
 SOIL SAMPLING RESULTS
 POLYCHLORINATED BIPHENYLS

SAMPLE IDENTIFICATION	B-12N S3	B-12N S4	B-12S S1	B-12S S2	B-12S S3	B-12S S4	B-12E S1	B-12E S2	CONTRACT REQUIRED DETECTION LIMIT
SAMPLE DEPTH	1.5' - 2.5'	2.5' - 3.5'	0 - 0.5'	0.5' - 1.5'	1.5' - 2.5'	2.5' - 3.5'	0 - 0.5'	0.5' - 1.5'	
DATE OF COLLECTION	10/22/99	10/22/99	10/22/99	10/22/99	10/22/99	10/22/99	10/22/99	10/22/99	
DILUTION FACTOR	10	10	10	10	10	10	10	10	
PERCENT SOLIDS	95	91	90	88	90	84	83	93	
UNITS	(mg/kg)	(mg/kg)	(mg/kg)	(mg/kg)	(mg/kg)	(mg/kg)	(mg/kg)	(mg/kg)	(mg/kg)
Atoclor-1016	U	U	U	U	U	U	U	U	0.033
Atoclor-1221	U	U	U	U	U	U	U	U	0.067
Atoclor-1232	U	U	U	U	U	U	U	U	0.033
Atoclor-1242	U	U	U	U	U	U	U	U	0.033
Atoclor-1248	2.700	2.800	7.000	7.800	5.400	2.600	7.500	8.000	0.033
Atoclor-1254	U	U	0.840	U	U	U	U	U	0.033
Atoclor-1260	U	U	U	U	U	U	0.540	U	0.033
TOTAL PCBs	2.700	2.800	7.840	7.800	5.400	2.600	8.040	8.000	

Qualifiers:

U: Compound analyzed for but not detected.

P: Concentration estimated, possibly biased low since primary and confirmation column concentrations had a percent difference >25%; lower value reported.

Notes:

☐: Value for Total PCBs exceeds 10 parts per million (ppm).

TABLE B-2 (continued)
 NORTHROP GRUMMAN CORPORATION
 PLANT 24 ACCESS ROAD SITE
 PCB INVESTIGATION/DELINEATION PROGRAM - SECOND PHASE
 SOIL SAMPLING RESULTS
 POLYCHLORINATED BIPHENYLS

SAMPLE IDENTIFICATION	B-12E S3	B-12E S4	B-12E S5	B-12E S6	B-12E S7	B-12E S8	B-12W S1	B-12W S2	CONTRACT REQUIRED DETECTION LIMIT
	1.5' - 2.5' 10/22/99 50 91	2.5' - 3.5' 10/22/99 100 87	3.5' - 4.5' 10/22/99 1 81	4.5' - 5.5' 10/22/99 1 82	5.5' - 6.5' 10/22/99 1 86	6.5' - 7.5' 10/22/99 1 98	0 - 0.5' 10/22/99 10 90	0.5' - 1.5' 10/22/99 10 93	
PERCENT SOLIDS	(mg/kg)								
UNITS	(mg/kg)								
Aroclor-1016	U	U	U	U	U	U	U	U	U
Aroclor-1221	U	U	U	U	U	U	U	U	U
Aroclor-1232	U	U	U	U	U	U	U	U	U
Aroclor-1242	U	U	U	U	U	U	U	U	U
Aroclor-1248	27.000	72.000	1.100	0.047	0.047	0.047	8.600	8.400	0.033
Aroclor-1254	U	U	U	U	U	U	U	U	0.033
Aroclor-1260	U	U	U	U	U	U	0.530	0.550	0.033
TOTAL PCBs	27.000	72.000	1.100	0.047	0	0	9.130	8.950	

Qualifiers:

U: Compound analyzed for but not detected.
 P: Concentration estimated, possibly biased low since primary and confirmation column concentrations had a percent difference >25%; lower value reported.

Notes:

☐: Value for Total PCBs exceeds 10 parts per million (ppm).

TABLE B-2 (continued)
 NORTHROP GRUMMAN CORPORATION
 PLANT 24 ACCESS ROAD SITE
 PCB INVESTIGATION/DELINEATION PROGRAM - SECOND PHASE
 SOIL SAMPLING RESULTS
 POLYCHLORINATED BIPHENYLS

SAMPLE IDENTIFICATION	B-12W S3	B-12W S4	B-14A S1	B-14A S2	B-14A S3	B-14A S4	B-14N S1	B-14N S2	CONTRACT REQUIRED DETECTION LIMIT
SAMPLE DEPTH	1.5' - 2.5'	2.5' - 3.5'	0 - 0.5'	0.5' - 1.5'	1.5' - 2.5'	2.5' - 3.5'	0 - 0.5'	0.5' - 1.5'	
DATE OF COLLECTION	10/22/99	10/22/99	10/21/99	10/21/99	10/21/99	10/21/99	10/21/99	10/21/99	
DILUTION FACTOR	10	10	10	10	10	10	10	10	
PERCENT SOLIDS	92	95	94	87	93	86	92	94	
UNITS	(mg/kg)	(mg/kg)	(mg/kg)	(mg/kg)	(mg/kg)	(mg/kg)	(mg/kg)	(mg/kg)	(mg/kg)
Atroclor-1016	U	U	U	U	U	U	U	U	0.033
Atroclor-1221	U	U	U	U	U	U	U	U	0.067
Atroclor-1232	U	U	U	U	U	U	U	U	0.033
Atroclor-1242	U	U	U	U	U	U	U	U	0.033
Atroclor-1248	7.800	3.200	12.000	18.000	5.700	0.730	6.600	0.460	0.033
Atroclor-1254	U	U	U	U	U	U	U	U	0.033
Atroclor-1260	0.360	U	U	U	U	3.400 P	U	U	0.033
TOTAL PCBs	8.160	3.200	12.000	18.000	5.700	4.130	6.600	0.460	

Qualifiers:

U: Compound analyzed for but not detected.

P: Concentration estimated, possibly biased low since primary and confirmation column concentrations had a percent difference >25%; lower value reported.

Notes:

☐: Value for Total PCBs exceeds 10 parts per million (ppm).

TABLE B-2 (continued)
 NORTHROP GRUMMAN CORPORATION
 PLANT 24 ACCESS ROAD SITE
 PCB INVESTIGATION/DELINEATION PROGRAM - SECOND PHASE
 SOIL SAMPLING RESULTS
 POLYCHLORINATED BIPHENYLS

SAMPLE IDENTIFICATION	B-14N S3	B-14N S4	B-14S S1	B-14S S2	B-14S S3	B-14S S4	B-14E S1	B-14E S2	CONTRACT REQUIRED DETECTION LIMIT
SAMPLE DEPTH	1.5' - 2.5'	2.5' - 3.5'	0 - 0.5'	0.5' - 1.5'	1.5' - 2.5'	2.5' - 3.5'	0 - 0.5'	0.5' - 1.5'	
DATE OF COLLECTION	10/21/99	10/21/99	10/21/99	10/21/99	10/21/99	10/21/99	10/21/99	10/21/99	
DILUTION FACTOR	10	10	10	1	10	10	100	10	
PERCENT SOLIDS	92	86	93	93	91	85	87	86	
UNITS	(mg/kg)	(mg/kg)	(mg/kg)	(mg/kg)	(mg/kg)	(mg/kg)	(mg/kg)	(mg/kg)	(mg/kg)
Atroclor-1016	U	U	U	U	U	U	U	U	0.033
Atroclor-1221	U	U	U	U	U	U	U	U	0.067
Atroclor-1232	U	U	U	U	U	U	U	U	0.033
Atroclor-1242	U	U	U	U	U	U	U	U	0.033
Atroclor-1248	2.200	U	7.300	U	0.860	U	41.000	16.000	0.033
Atroclor-1254	U	U	U	U	U	U	U	U	0.033
Atroclor-1260	U	2.600 P	U	0.140 P	1.100 P	1.200 P	U	U	0.033
TOTAL PCBs	2.200	2.600	7.300	0.140	1.960	1.200	41.000	16.000	

Qualifiers:

U: Compound analyzed for but not detected.

P: Concentration estimated, possibly biased low since primary and confirmation column concentrations had a percent difference >25%; lower value reported.

Notes:

☐: Value for Total PCBs exceeds 10 parts per million (ppm).

TABLE B-2 (continued)
 NORTHROP GRUMMAN CORPORATION
 PLANT 24 ACCESS ROAD SITE
 PCB INVESTIGATION/DELINEATION PROGRAM - SECOND PHASE
 SOIL SAMPLING RESULTS
 POLYCHLORINATED BIPHENYLS

SAMPLE IDENTIFICATION	B-14E S3	B-14E S4	B-14E S5	B-14E S6	B-14E S7	B-14E S8	B-14W S1	B-14W S2	CONTRACT REQUIRED DETECTION LIMIT
SAMPLE DEPTH	1.5' - 2.5'	2.5' - 3.5'	3.5' - 4.5'	4.5' - 5.5'	5.5' - 6.5'	6.5' - 7.5'	0 - 0.5'	0.5' - 1.5'	
DATE OF COLLECTION	10/21/99	10/21/99	10/21/99	10/21/99	10/21/99	10/21/99	10/21/99	10/21/99	
DILUTION FACTOR	100	100	10	10	1	1	10	10	
PERCENT SOLIDS	90	89	68	83	90	97	82	93	
UNITS	(mg/kg)	(mg/kg)	(mg/kg)	(mg/kg)	(mg/kg)	(mg/kg)	(mg/kg)	(mg/kg)	(mg/kg)
Atroclor-1016	U	U	U	U	U	U	U	U	0.033
Atroclor-1221	U	U	U	U	U	U	U	U	0.067
Atroclor-1232	U	U	U	U	U	U	U	U	0.033
Atroclor-1242	U	U	U	U	U	U	U	U	0.033
Atroclor-1248	22.000	38.000	1.300	U	0.130	U	9.200	1.100	0.033
Atroclor-1254	U	U	U	U	U	U	U	U	0.033
Atroclor-1260	U	U	11.000	4.800	U	U	0.520	U	0.033
TOTAL PCBs	22.000	38.000	12.300	4.800	0.130	0	9.720	1.100	

Qualifiers:

U: Compound analyzed for but not detected.

P: Concentration estimated, possibly biased low since primary and confirmation column concentrations had a percent difference >25%; lower value reported.

Notes:

☐: Value for Total PCBs exceeds 10 parts per million (ppm).

TABLE B-2 (continued)
 NORTHROP GRUMMAN CORPORATION
 PLANT 24 ACCESS ROAD SITE
 PCB INVESTIGATION/DELINEATION PROGRAM - SECOND PHASE
 SOIL SAMPLING RESULTS
 POLYCHLORINATED BIPHENYLS

SAMPLE IDENTIFICATION	B-14W S3	B-14W S4	B-15A S1	B-15A S2	B-15A S3	B-15A S4	B-15N S1	B-15N S2	CONTRACT REQUIRED DETECTION LIMIT
SAMPLE DEPTH	1.5' - 2.5'	2.5' - 3.5'	0 - 0.5'	0.5' - 1.5'	1.5' - 2.5'	2.5' - 3.5'	0 - 0.5'	0.5' - 1.5'	
DATE OF COLLECTION	10/21/99	10/21/99	10/21/99	10/21/99	10/21/99	10/21/99	10/21/99	10/21/99	
DILUTION FACTOR	10	1	100	100	10	10	10	1	
PERCENT SOLIDS	88	87	85	92	90	90	87	93	
UNITS	(mg/kg)	(mg/kg)	(mg/kg)	(mg/kg)	(mg/kg)	(mg/kg)	(mg/kg)	(mg/kg)	(mg/kg)
Atroclor-1016	U	U	U	U	U	U	U	U	0.033
Atroclor-1221	U	U	U	U	U	U	U	U	0.067
Atroclor-1232	U	U	U	U	U	U	U	U	0.033
Atroclor-1242	U	U	U	U	U	U	U	U	0.033
Atroclor-1248	0.740	0.420	7.100	39.000	0.980	2.600	4.600	0.620	0.033
Atroclor-1254	U	U	U	U	0.930	U	1.500	U	0.033
Atroclor-1260	2.500 P	1.500 P	U	U	U	U	U	U	0.033
TOTAL PCBs	3.240	1.920	7.100	39.000	1.910	2.600	6.100	0.620	

Qualifiers:

U: Compound analyzed for but not detected.
 P: Concentration estimated, possibly biased low since primary and confirmation column concentrations had a percent difference >25%; lower value reported.

Notes:

☐: Value for Total PCBs exceeds 10 parts per million (ppm).

TABLE B-2 (continued)
 NORTHROP GRUMMAN CORPORATION
 PLANT 24 ACCESS ROAD SITE
 PCB INVESTIGATION/DELINEATION PROGRAM - SECOND PHASE
 SOIL SAMPLING RESULTS
 POLYCHLORINATED BIPHENYLS

SAMPLE IDENTIFICATION	B-15N S3	B-15N S4	B-15S S1	B-15S S2	B-15S S3	B-15S S4	B-15S S5	B-15S S6	CONTRACT REQUIRED DETECTION LIMIT
SAMPLE DEPTH	1.5' - 2.5'	2.5' - 3.5'	0 - 0.5'	0.5' - 1.5'	1.5' - 2.5'	2.5' - 3.5'	3.5' - 4.5'	4.5' - 5.5'	
DATE OF COLLECTION	10/21/99	10/21/99	10/21/99	10/21/99	10/21/99	10/21/99	10/21/99	10/21/99	
DILUTION FACTOR	10	1	20	20	10	10	10	1	
PERCENT SOLIDS	91	81	92	99	95	94	91	96	
UNITS	(mg/kg)	(mg/kg)	(mg/kg)	(mg/kg)	(mg/kg)	(mg/kg)	(mg/kg)	(mg/kg)	(mg/kg)
Atroclor-1016	U	U	U	U	U	U	U	U	0.033
Atroclor-1221	U	U	U	U	U	U	U	U	0.067
Atroclor-1232	U	U	U	U	U	U	U	U	0.033
Atroclor-1242	U	U	U	U	U	U	U	U	0.033
Atroclor-1248	1.200 P	0.420	10.000	9.800	10.000	5.700	4.300	0.850	0.033
Atroclor-1254	U	0.140	U	U	U	U	U	U	0.033
Atroclor-1260	U	U	U	U	0.570 P	1.300	U	U	0.033
TOTAL PCBs	1.200	0.560	10.000	9.800	10.570	7.000	4.300	0.850	

Qualifiers:

U: Compound analyzed for but not detected.

P: Concentration estimated, possibly biased low since primary and confirmation column concentrations had a percent difference >25%; lower value reported.

Notes:

☐: Value for Total PCBs exceeds 10 parts per million (ppm).

TABLE B-2 (continued)
 NORTHROP GRUMMAN CORPORATION
 PLANT 24 ACCESS ROAD SITE
 PCB INVESTIGATION/DELINEATION PROGRAM - SECOND PHASE
 SOIL SAMPLING RESULTS
 POLYCHLORINATED BIPHENYLS

SAMPLE IDENTIFICATION	B-15S S7	B-15S S8	B-15E S1	B-15E S2	B-15E S3	B-15E S4	B-15W S1	B-15W S2	CONTRACT REQUIRED DETECTION LIMIT
SAMPLE DEPTH	5.5' - 6.5'	6.5' - 7.5'	0 - 0.5'	0.5' - 1.5'	1.5' - 2.5'	2.5' - 3.5'	0 - 0.5'	0.5' - 1.5'	(mg/kg)
DATE OF COLLECTION	10/21/99	10/21/99	10/21/99	10/21/99	10/21/99	10/21/99	10/21/99	10/21/99	(mg/kg)
DILUTION FACTOR	1	1	10	10	10	1	100	10	(mg/kg)
PERCENT SOLIDS	96	99	95	89	79	79	78	26	(mg/kg)
UNITS	(mg/kg)	(mg/kg)	(mg/kg)	(mg/kg)	(mg/kg)	(mg/kg)	(mg/kg)	(mg/kg)	(mg/kg)
Aroclor-1016	U	U	U	U	U	U	U	U	0.033
Aroclor-1221	U	U	U	U	U	U	U	U	0.067
Aroclor-1232	U	U	U	U	U	U	U	U	0.033
Aroclor-1242	U	U	U	U	U	U	U	U	0.033
Aroclor-1248	1.100	U	6.300	U	7.500	0.110	33.000	16.000	0.033
Aroclor-1254	U	U	0.840	6.800	U	0.140	U	U	0.033
Aroclor-1260	U	U	U	U	U	U	U	U	0.033
TOTAL PCBs	1.100	0	7.140	6.800	7.500	0.250	33.000	16.000	

Qualifiers:

U: Compound analyzed for but not detected.
 P: Concentration estimated, possibly biased low since primary and confirmation column concentrations had a percent difference >25%; lower value reported.

Notes:

☐: Value for Total PCBs exceeds 10 parts per million (ppm).

TABLE B-2 (continued)
 NORTHROP GRUMMAN CORPORATION
 PLANT 24 ACCESS ROAD SITE
 PCB INVESTIGATION/DELINEATION PROGRAM - SECOND PHASE
 SOIL SAMPLING RESULTS
 POLYCHLORINATED BIPHENYLS

SAMPLE IDENTIFICATION	B-15W S3	B-15W S4	B-15W S5	B-15W S6	B-15W S7	B-15W S8	B-16N S1	B-16N S2	CONTRACT REQUIRED DETECTION LIMIT
SAMPLE DEPTH	1.5' - 2.5'	2.5' - 3.5'	3.5' - 4.5'	4.5' - 5.5'	5.5' - 6.5'	6.5' - 7.5'	0 - 0.5'	0.5' - 1.5'	
DATE OF COLLECTION	10/21/99	10/21/99	10/21/99	10/21/99	10/21/99	10/21/99	10/21/99	10/21/99	
DILUTION FACTOR	10	100	1	1	1	1	10	100	
PERCENT SOLIDS	86	81	89	94	82	97	83	93	
UNITS	(mg/kg)	(mg/kg)	(mg/kg)	(mg/kg)	(mg/kg)	(mg/kg)	(mg/kg)	(mg/kg)	(mg/kg)
Aroclor-1016	U	U	U	U	U	U	U	U	0.033
Aroclor-1221	U	U	U	U	U	U	U	U	0.067
Aroclor-1232	U	U	U	U	U	U	U	U	0.033
Aroclor-1242	U	U	U	U	U	U	U	U	0.033
Aroclor-1248	14.000	43.000	0.950	0.190	0.950	0.190	4.600	28.000	0.033
Aroclor-1254	U	U	U	U	U	U	U	U	0.033
Aroclor-1260	U	U	U	U	U	U	U	U	0.033
TOTAL PCBs	14.000	43.000	0.950	0.190	0	0	4.600	28.000	

Notes:

U: Compound analyzed for but not detected.

P: Concentration estimated, possibly biased low since primary and confirmation column concentrations had a percent difference >25%; lower value reported.

Notes:

☐: Value for Total PCBs exceeds 10 parts per million (ppm).

TABLE B-2 (continued)
 NORTHROP GRUMMAN CORPORATION
 PLANT 24 ACCESS ROAD SITE
 PCB INVESTIGATION/DELINEATION PROGRAM - SECOND PHASE
 SOIL SAMPLING RESULTS
 POLYCHLORINATED BIPHENYLS

SAMPLE IDENTIFICATION	B-16N S3	B-16N S4	B-16S S1	B-16S S2	B-16E S1	B-16E S2	B-16E S3	B-16E S4	CONTRACT REQUIRED DETECTION LIMIT
	1.5' - 2.5' 10/21/99 20	2.5' - 3.5' 10/21/99 10	0 - 0.5' 10/21/99 10	0.5' - 1.5' 10/21/99 1	0 - 0.5' 10/21/99 10	0.5' - 1.5' 10/21/99 100	1.5' - 2.5' 10/21/99 20	2.5' - 3.5' 10/21/99 1	
PERCENT SOLIDS	(mg/kg)								
UNITS	(mg/kg)								
Atroclor-1016	U	U	U	U	2.900	U	U	U	0.033
Atroclor-1221	U	U	U	U	U	U	U	U	0.067
Atroclor-1232	U	U	U	U	U	U	U	U	0.033
Atroclor-1242	U	U	U	U	U	U	U	U	0.033
Atroclor-1248	22.000	13.000	2.600	2.600	5.800	42.000	20.000	0.048	0.033
Atroclor-1254	U	U	U	U	U	U	U	U	0.033
Atroclor-1260	U	U	U	U	U	U	U	U	0.033
TOTAL PCBs	22.000	13.000	2.600	0	8.700	42.000	20.000	0.048	

Qualifiers:

U: Compound analyzed for but not detected.

P: Concentration estimated, possibly biased low since primary and confirmation column concentrations had a percent difference >25%; lower value reported.

Notes:

☐: Value for Total PCBs exceeds 10 parts per million (ppm).

TABLE B-2 (continued)
 NORTHROP GRUMMAN CORPORATION
 PLANT 24 ACCESS ROAD SITE
 PCB INVESTIGATION/DELINEATION PROGRAM - SECOND PHASE
 SOIL SAMPLING RESULTS
 POLYCHLORINATED BIPHENYLS

SAMPLE IDENTIFICATION	B-16W S1	B-16W S2	B-16W S3	B-16W S4	B-23 S1	B-23 S2	B-24 S1	B-24 S2	CONTRACT REQUIRED DETECTION LIMIT
SAMPLE DEPTH	0 - 0.5'	0.5' - 1.5'	1.5' - 2.5'	2.5' - 3.5'	0 - 0.5'	0.5' - 1.5'	0 - 0.5'	0.5' - 1.5'	(mg/kg)
DATE OF COLLECTION	10/21/99	10/21/99	10/21/99	10/21/99	10/22/99	10/22/99	10/22/99	10/22/99	(mg/kg)
DILUTION FACTOR	1	100	50	1	10	1	1	1	(mg/kg)
PERCENT SOLIDS	89	92	95	96	93	92	93	90	(mg/kg)
UNITS	(mg/kg)	(mg/kg)	(mg/kg)	(mg/kg)	(mg/kg)	(mg/kg)	(mg/kg)	(mg/kg)	(mg/kg)
Aroclor-1016	U	U	U	U	U	U	U	U	0.033
Aroclor-1221	U	U	U	U	U	U	U	U	0.067
Aroclor-1232	U	U	U	U	U	U	U	U	0.033
Aroclor-1242	U	U	U	U	U	U	U	U	0.033
Aroclor-1248	0.680	37.000	30.000	0.170	4.900	U	U	U	0.033
Aroclor-1254	U	U	U	U	U	U	U	U	0.033
Aroclor-1260	0.160	U	U	0.250	U	U	U	U	0.033
TOTAL PCBs	0.840	37.000	30.000	0.420	4.900	0	0	0	

Qualifiers:

U: Compound analyzed for but not detected.

P: Concentration estimated, possibly biased low since primary and confirmation column concentrations had a percent difference >25%; lower value reported.

Notes:

☐: Value for Total PCBs exceeds 10 parts per million (ppm).

TABLE B-2 (continued)
 NORTHROP GRUMMAN CORPORATION
 PLANT 24 ACCESS ROAD SITE
 PCB INVESTIGATION/DELINEATION PROGRAM - SECOND PHASE
 SOIL SAMPLING RESULTS
 POLYCHLORINATED BIPHENYLS

SAMPLE IDENTIFICATION	B-25 S1	B-25 S2	B-26 S1	B-26 S2	B-27 S1	B-27 S2	CONTRACT REQUIRED DETECTION LIMIT
SAMPLE DEPTH	0 - 0.5'	0.5' - 1.5'	0 - 0.5'	0.5' - 1.5'	0 - 0.5'	0.5' - 1.5'	
DATE OF COLLECTION	10/22/99	10/22/99	10/22/99	10/22/99	10/22/99	10/22/99	
DILUTION FACTOR	1	1	1	1	1	1	
PERCENT SOLIDS	93	97	95	94	100	93	
UNITS	(mg/kg)	(mg/kg)	(mg/kg)	(mg/kg)	(mg/kg)	(mg/kg)	(mg/kg)
Atroclor-1016	U	U	U	U	U	U	0.033
Atroclor-1221	U	U	U	U	U	U	0.067
Atroclor-1232	U	U	U	U	U	U	0.033
Atroclor-1242	U	U	U	U	U	U	0.033
Atroclor-1248	U	U	U	U	U	U	0.033
Atroclor-1254	U	U	U	U	U	U	0.033
Atroclor-1260	U	U	U	U	U	U	0.033
TOTAL PCBs	0	0	0	0	0	0	

Notes:

Qualifiers:
 U: Compound analyzed for but not detected.
 P: Concentration estimated, possibly biased low since primary and confirmation column concentrations had a percent difference >25%; lower value reported.

Notes:
 : Value for Total PCBs exceeds 10 parts per million (ppm).

THIRD PHASE SOIL SAMPLING RESULTS

TABLE B-3
NORTHROP GRUMMAN CORPORATION
PLANT 24 ACCESS ROAD SITE
PCB INVESTIGATION/DELINEATION PROGRAM - THIRD PHASE
SOIL SAMPLING RESULTS
POLYCHLORINATED BIPHENYLS

SAMPLE IDENTIFICATION	B-04E20 S1	B-04E20 S2	B-04E20 S3	B-04W20 S1	B-04W20 S2	B-04W20 S3	B-04W20 S4	B-12E20 S1	CONTRACT REQUIRED DETECTION LIMIT
SAMPLE DEPTH	0 - 0.5'	0.5' - 1.5'	1.5' - 2.5'	0 - 0.5'	0.5' - 1.5'	1.5' - 2.5'	2.5' - 3.5'	0 - 0.5'	
DATE OF COLLECTION	02/08/00	02/08/00	02/08/00	02/08/00	02/08/00	02/08/00	02/08/00	02/08/00	
DILUTION FACTOR	10	10	1	10	10	1	1	10	
PERCENT SOLIDS	81	91	93	86	89	93	88	80	
UNITS	(mg/kg)	(mg/kg)	(mg/kg)	(mg/kg)	(mg/kg)	(mg/kg)	(mg/kg)	(mg/kg)	(mg/kg)
Atroclor-1016	U	U	U	U	U	U	U	U	0.033
Atroclor-1221	U	U	U	U	U	U	U	U	0.067
Atroclor-1232	U	U	U	U	U	U	U	U	0.033
Atroclor-1242	U	U	U	U	U	U	U	U	0.033
Atroclor-1248	3.200 P	9.800	0.140	3.200 P	10.000	1.300 P	7.200	7.200	0.033
Atroclor-1254	U	U	U	U	U	U	U	U	0.033
Atroclor-1260	U	U	0.150	U	U	0.280 P	U	1.600	0.033
TOTAL PCBs	3.200	9.800	0.290	3.200	10.000	1.580	0	8.800	

Qualifiers:

U: Compound analyzed for but not detected.

P: Concentration estimated, possibly biased low since primary and confirmation column concentrations had a percent difference >25%; lower value reported.

Notes:

☐: Value for Total PCBs exceeds 10 parts per million (ppm).

TABLE B-3 (continued)
 NORTHROP GRUMMAN CORPORATION
 PLANT 24 ACCESS ROAD SITE
 PCB INVESTIGATION/DELINEATION PROGRAM - THIRD PHASE
 SOIL SAMPLING RESULTS
 POLYCHLORINATED BIPHENYLS

SAMPLE IDENTIFICATION	B-12E20 S2	B-12E20 S3	B-12E20 S4	B-12E20 S5	B-14E20 S1	B-14E20 S2	B-14E20 S3	B-14E20 S4	CONTRACT REQUIRED DETECTION LIMIT
SAMPLE DEPTH	0.5' - 1.5'	1.5' - 2.5'	2.5' - 3.5'	3.5' - 4.5'	0 - 0.5'	0.5' - 1.5'	1.5' - 2.5'	2.5' - 3.5'	
DATE OF COLLECTION	02/08/00	02/08/00	02/08/00	02/08/00	02/08/00	02/08/00	02/08/00	02/08/00	
DILUTION FACTOR	1	10	10	1	10	10	10	10	
PERCENT SOLIDS	95	92	85	86	88	90	89	66	
UNITS	(mg/kg)	(mg/kg)	(mg/kg)	(mg/kg)	(mg/kg)	(mg/kg)	(mg/kg)	(mg/kg)	(mg/kg)
Aroclor-1016	U	U	U	U	U	U	U	U	0.033
Aroclor-1221	U	U	U	U	U	U	U	U	0.067
Aroclor-1232	U	U	U	U	U	U	U	U	0.033
Aroclor-1242	U	U	U	U	U	U	U	U	0.033
Aroclor-1248	0.480	15.000	2.900	1.100	17.000	6.800	5.200	U	0.033
Aroclor-1254	U	U	U	U	U	U	U	U	0.033
Aroclor-1260	0.180 P	0.970	U	U	U	0.840	0.890	16.000	0.033
TOTAL PCBs	0.660	15.970	2.900	1.100	17.000	7.640	6.090	16.000	

Qualifiers:

U: Compound analyzed for but not detected.
 P: Concentration estimated, possibly biased low since primary and confirmation column concentrations had a percent difference >25%; lower value reported.

Notes:

☐: Value for Total PCBs exceeds 10 parts per million (ppm).

TABLE B-3 (continued)
 NORTHROP GRUMMAN CORPORATION
 PLANT 24 ACCESS ROAD SITE
 PCB INVESTIGATION/DELINEATION PROGRAM - THIRD PHASE
 SOIL SAMPLING RESULTS
 POLYCHLORINATED BIPHENYLS

SAMPLE IDENTIFICATION	B-14E20 S5	B-14E20 S6	B-14E40 S1	B-14E40 S2	B-14E40 S3	B-14E40 S4	B-14E60 S1	B-14E60 S2	CONTRACT REQUIRED DETECTION LIMIT
SAMPLE DEPTH	3.5' - 4.5'	4.5' - 5.5'	0 - 0.5'	0.5' - 1.5'	1.5' - 2.5'	2.5' - 3.5'	0 - 0.5'	0.5' - 1.5'	
DATE OF COLLECTION	02/08/00	02/08/00	02/08/00	02/08/00	02/08/00	02/08/00	02/08/00	02/08/00	
DILUTION FACTOR	1	1	10	20	10	1	1	20	
PERCENT SOLIDS	84	97	87	90	92	94	84	96	
UNITS	(mg/kg)	(mg/kg)	(mg/kg)	(mg/kg)	(mg/kg)	(mg/kg)	(mg/kg)	(mg/kg)	(mg/kg)
Atroclor-1016	U	U	U	U	U	U	U	U	0.033
Atroclor-1221	U	U	U	U	U	U	U	U	0.067
Atroclor-1232	U	U	U	U	U	U	U	U	0.033
Atroclor-1242	U	U	U	U	U	U	U	U	0.033
Atroclor-1248	U	U	17.000	26.000	4.900	0.250	1.600	52.000	0.033
Atroclor-1254	U	U	U	U	U	U	U	U	0.033
Atroclor-1260	0.530	U	U	U	U	0.720	U	U	0.033
TOTAL PCBs	0.530	0	17.000	26.000	4.900	0.970	1.600	52.000	

Qualifiers:

- U: Compound analyzed for but not detected.
- P: Concentration estimated, possibly biased low since primary and confirmation column concentrations had a percent difference >25%; lower value reported.

Notes:

☐: Value for Total PCBs exceeds 10 parts per million (ppm).

TABLE B-3 (continued)
 NORTHROP GRUMMAN CORPORATION
 PLANT 24 ACCESS ROAD SITE
 PCB INVESTIGATION/DELINEATION PROGRAM - THIRD PHASE
 SOIL SAMPLING RESULTS
 POLYCHLORINATED BIPHENYLS

SAMPLE IDENTIFICATION	B-14E60 S3	B-14E60 S4	B-15W20 S1	B-15W20 S2	B-15W20 S3	B-15W20 S4	B-15W20 S5	B-15SE20 S1	CONTRACT REQUIRED DETECTION LIMIT
SAMPLE DEPTH	1.5' - 2.5'	2.5' - 3.5'	0 - 0.5'	0.5' - 1.5'	1.5' - 2.5'	2.5' - 3.5'	3.5' - 4.5'	0 - 0.5'	
DATE OF COLLECTION	02/08/00	02/08/00	02/08/00	02/08/00	02/08/00	02/08/00	02/08/00	02/08/00	
DILUTION FACTOR	1	1	1	1	20	1	1	10	
PERCENT SOLIDS	90	82	75	90	97	82	85	66	
UNITS	(mg/kg)	(mg/kg)	(mg/kg)	(mg/kg)	(mg/kg)	(mg/kg)	(mg/kg)	(mg/kg)	(mg/kg)
Atroclor-1016	U	U	U	U	U	U	U	U	0.033
Atroclor-1221	U	U	U	U	U	U	U	U	0.067
Atroclor-1232	U	U	U	U	U	U	U	U	0.033
Atroclor-1242	U	U	U	U	U	U	U	U	0.033
Atroclor-1248	2.100	0.740	0.960	1.300	22.000	2.000	0.420	7.000	0.033
Atroclor-1254	U	U	U	0.094	U	U	U	U	0.033
Atroclor-1260	U	U	U		U	U	U	U	0.033
TOTAL PCBs	2.100	0.740	0.960	1.394	22.000	2.000	0.420	7.000	

Qualifiers:

U: Compound analyzed for but not detected.

P: Concentration estimated, possibly biased low since primary and confirmation column concentrations had a percent difference >25%; lower value reported.

Notes:

☐: Value for Total PCBs exceeds 10 parts per million (ppm).

TABLE B-3 (continued)
 NORTHROP GRUMMAN CORPORATION
 PLANT 24 ACCESS ROAD SITE
 PCB INVESTIGATION/DELINEATION PROGRAM - THIRD PHASE
 SOIL SAMPLING RESULTS
 POLYCHLORINATED BIPHENYLS

SAMPLE IDENTIFICATION	B-15SE20 S2	B-15SE20 S3	B-15SE20 S4	B-15SE20 S5	B-15SE20 S6	B-15SW20 S1	B-15SW20 S2	B-15SW20 S3	CONTRACT REQUIRED DETECTION LIMIT
SAMPLE DEPTH	0.5' - 1.5'	1.5' - 2.5'	2.5' - 3.5'	3.5' - 4.5'	4.5' - 5.5'	0 - 0.5'	0.5' - 1.5'	1.5' - 2.5'	
DATE OF COLLECTION	02/08/00	02/08/00	02/08/00	02/08/00	02/08/00	02/08/00	02/08/00	02/08/00	
DILUTION FACTOR	100	100	100	1	1	1	100	1	
PERCENT SOLIDS	87	89	90	84	89	85	94	90	
UNITS	(mg/kg)	(mg/kg)	(mg/kg)	(mg/kg)	(mg/kg)	(mg/kg)	(mg/kg)	(mg/kg)	(mg/kg)
Aroclor-1016	U	U	U	U	U	U	U	U	0.033
Aroclor-1221	U	U	U	U	U	U	U	U	0.067
Aroclor-1232	U	U	U	U	U	U	U	U	0.033
Aroclor-1242	U	U	U	U	U	U	U	U	0.033
Aroclor-1248	27.000	88.000	25.000	U	0.070	0.670	26.000	0.680	0.033
Aroclor-1254	U	U	U	U	U	U	U	U	0.033
Aroclor-1260	U	U	U	0.057	U	U	U	U	0.033
TOTAL PCBs	27.000	88.000	25.000	0.057	0.070	0.670	26.000	0.680	

Qualifiers:

- U: Compound analyzed for but not detected.
- P: Concentration estimated, possibly biased low since primary and confirmation column concentrations had a percent difference >25%; lower value reported.

Notes:

: Value for Total PCBs exceeds 10 parts per million (ppm).

TABLE B-3 (continued)
 NORTHROP GRUMMAN CORPORATION
 PLANT 24 ACCESS ROAD SITE
 PCB INVESTIGATION/DELINEATION PROGRAM - THIRD PHASE
 SOIL SAMPLING RESULTS
 POLYCHLORINATED BIPHENYLS

SAMPLE IDENTIFICATION	B-15SW20 S4	B-16E20 S1	B-16E20 S2	B-16E20 S3	B-16E20 S4	B-16E20 S5	B-16W20 S1	B-16W20 S2	CONTRACT REQUIRED DETECTION LIMIT
SAMPLE DEPTH	2.5' - 3.5'	0 - 0.5'	0.5' - 1.5'	1.5' - 2.5'	2.5' - 3.5'	3.5' - 4.5'	0 - 0.5'	0.5' - 1.5'	
DATE OF COLLECTION	02/08/00	02/08/00	02/08/00	02/08/00	02/08/00	02/08/00	02/08/00	02/08/00	
DILUTION FACTOR	1	10	20	20	1	1	1	20	
PERCENT SOLIDS	81	82	86	86	80	95	90	94	
UNITS	(mg/kg)	(mg/kg)	(mg/kg)	(mg/kg)	(mg/kg)	(mg/kg)	(mg/kg)	(mg/kg)	(mg/kg)
Aroclor-1016	U	U	U	U	U	U	U	U	0.033
Aroclor-1221	U	U	U	U	U	U	U	U	0.067
Aroclor-1232	U	U	U	U	U	U	U	U	0.033
Aroclor-1242	U	U	U	U	U	U	U	U	0.033
Aroclor-1248	0.590	6.600 P	23.000	21.000	0.270	0.054	0.470 P	20.000	0.033
Aroclor-1254	U	U	U	U	U	U	U	U	0.033
Aroclor-1260	0.460 P	U	U	U	U	U	U	U	0.033
TOTAL PCBs	1.050	6.600	23.000	21.000	0.270	0.054	0.470	20.000	

Qualifiers:

U: Compound analyzed for but not detected.
 P: Concentration estimated, possibly biased low since primary and confirmation column concentrations had a percent difference >25%; lower value reported.

Notes:

☐: Value for Total PCBs exceeds 10 parts per million (ppm).

TABLE B-3 (continued)
 NORTROP GRUMMAN CORPORATION
 PLANT 24 ACCESS ROAD SITE
 PCB INVESTIGATION/DELINEATION PROGRAM - THIRD PHASE
 SOIL SAMPLING RESULTS
 POLYCHLORINATED BIPHENYLS

SAMPLE IDENTIFICATION	B-16W20 S3	B-16W20 S4										CONTRACT REQUIRED DETECTION LIMIT
SAMPLE DEPTH	1.5' - 2.5'	2.5' - 3.5'										
DATE OF COLLECTION	02/08/00	02/08/00										
DILUTION FACTOR	10	1										
PERCENT SOLIDS	96	90										
UNITS	(mg/kg)	(mg/kg)										(mg/kg)
Aroclor-1016	U	U										0.033
Aroclor-1221	U	U										0.067
Aroclor-1232	U	U										0.033
Aroclor-1242	U	U										0.033
Aroclor-1248	8.600	U										0.033
Aroclor-1254	U	U										0.033
Aroclor-1260	U	U										0.033
TOTAL PCBs	8.600	0										

Qualifiers:

- U: Compound analyzed for but not detected.
- P: Concentration estimated, possibly biased low since primary and confirmation column concentrations had a percent difference >25%; lower value reported.

Notes:

: Value for Total PCBs exceeds 10 parts per million (ppm).

FOURTH PHASE SOIL SAMPLING RESULTS

TABLE B-4
NORTHROP GRUMMAN CORPORATION
PLANT 24 ACCESS ROAD SITE
PCB INVESTIGATION/DELINEATION PROGRAM - FOURTH PHASE
SOIL SAMPLING RESULTS
POLYCHLORINATED BIPHENYLS

SAMPLE IDENTIFICATION	B-12E20N S1	B-12E20N S2	B-12E20N S3	B-12E20N S4	B-12E20S S1	B-12E20S S2	B-12E20S S3	B-12E20S S4	CONTRACT REQUIRED DETECTION LIMIT
	0 - 0.5' 11/16/00	0.5' - 1.5' 11/16/00	1.5' - 2.5' 11/16/00	2.5' - 3.5' 11/16/00	0 - 0.5' 11/16/00	0.5' - 1.5' 11/16/00	1.5' - 2.5' 11/16/00	2.5' - 3.5' 11/16/00	
DATE OF COLLECTION	11/16/00	11/16/00	11/16/00	11/16/00	11/16/00	11/16/00	11/16/00	11/16/00	
DILUTION FACTOR	20	1	10	5	10	1	1	1	
PERCENT SOLIDS	92	97	91	89	87	90	92	85	
UNITS	(mg/kg)	(mg/kg)	(mg/kg)	(mg/kg)	(mg/kg)	(mg/kg)	(mg/kg)	(mg/kg)	(mg/kg)
Aroclor-1016	U	U	U	U	U	U	U	U	0.033
Aroclor-1221	U	U	U	U	U	U	U	U	0.067
Aroclor-1232	U	U	U	U	U	U	U	U	0.033
Aroclor-1242	U	U	U	U	U	U	U	U	0.033
Aroclor-1248	8.000	0.260	4.400	2.300	3.600	1.600	0.380	U	0.033
Aroclor-1254	U	U	U	U	U	U	U	U	0.033
Aroclor-1260	U	U	U	U	U	U	U	U	0.033
TOTAL PCBs	8.000	0.260	4.400	2.300	3.600	1.600	0.380	0	

Qualifiers:

- U: Compound analyzed for but not detected.
- P: Concentration estimated, possibly biased low since primary and confirmation column concentrations had a percent difference >25%; lower value reported.

Notes:

☐: Value for Total PCBs exceeds 10 parts per million (ppm).

TABLE B-4 (continued)
 NORTROP GRUMMAN CORPORATION
 PLANT 24 ACCESS ROAD SITE
 PCB INVESTIGATION/DELINEATION PROGRAM - FOURTH PHASE
 SOIL SAMPLING RESULTS
 POLYCHLORINATED BIPHENYLS

SAMPLE IDENTIFICATION	B-12E30 S1	B-12E30 S2	B-12E30 S3	B-12E30 S4	B-14E20N S1	B-14E20N S2	B-14E20N S3	B-14E20N S4	CONTRACT REQUIRED DETECTION LIMIT
SAMPLE DEPTH	0 - 0.5'	0.5' - 1.5'	1.5' - 2.5'	2.5' - 3.5'	0 - 0.5'	0.5' - 1.5'	1.5' - 2.5'	2.5' - 3.5'	
DATE OF COLLECTION	11/16/00	11/16/00	11/16/00	11/16/00	11/16/00	11/16/00	11/16/00	11/16/00	
DILUTION FACTOR	20	20	10	1	20	10	1	1	
PERCENT SOLIDS	91	94	95	85	93	88	90	93	
UNITS	(mg/kg)	(mg/kg)	(mg/kg)	(mg/kg)	(mg/kg)	(mg/kg)	(mg/kg)	(mg/kg)	(mg/kg)
Aroclor-1016	U	U	U	U	U	U	U	U	0.033
Aroclor-1221	U	U	U	U	U	U	U	U	0.067
Aroclor-1232	U	U	U	U	U	U	U	U	0.033
Aroclor-1242	U	U	U	U	U	U	U	U	0.033
Aroclor-1248	7.100 P	15.000 P	5.900 P	0.680	13.000	8.900	0.600	0.320	0.033
Aroclor-1254	U	U	U	U	U	U	U	U	0.033
Aroclor-1260	U	U	U	U	1.100	2.100	U	U	0.033
TOTAL PCBs	7.100	15.000	5.900	0.680	14.100	11.000	0.600	0.320	

Qualifiers:

U: Compound analyzed for but not detected.

P: Concentration estimated, possibly biased low since primary and confirmation column concentrations had a percent difference >25%; lower value reported.

Notes:

☐: Value for Total PCBs exceeds 10 parts per million (ppm).

TABLE B-4 (continued)
 NORTHROP GRUMMAN CORPORATION
 PLANT 24 ACCESS ROAD SITE
 PCB INVESTIGATION/DELINEATION PROGRAM - FOURTH PHASE
 SOIL SAMPLING RESULTS
 POLYCHLORINATED BIPHENYLS

SAMPLE IDENTIFICATION	B-14E20S S1	B-14E20S S2	B-14E20S S3	B-14E20S S4	B-14E40N S1	B-14E40N S2	B-14E40N S3	B-14E40N S4	CONTRACT REQUIRED DETECTION LIMIT
	0 - 0.5'	0.5' - 1.5'	1.5' - 2.5'	2.5' - 3.5'	0 - 0.5'	0.5' - 1.5'	1.5' - 2.5'	2.5' - 3.5'	
DATE OF COLLECTION	11/16/00	11/16/00	11/16/00	11/16/00	11/16/00	11/16/00	11/16/00	11/16/00	
DILUTION FACTOR	5	1	1	1	10	10	1	5	
PERCENT SOLIDS	92	92	91	76	89	91	91	87	
UNITS	(mg/kg)	(mg/kg)	(mg/kg)	(mg/kg)	(mg/kg)	(mg/kg)	(mg/kg)	(mg/kg)	(mg/kg)
Aroclor-1016	U	U	U	U	U	U	U	U	0.033
Aroclor-1221	U	U	U	U	U	U	U	U	0.067
Aroclor-1232	U	U	U	U	U	U	U	U	0.033
Aroclor-1242	U	U	U	U	U	U	U	U	0.033
Aroclor-1248	2.700	U	U	U	4.300	3.100	0.360	2.100	0.033
Aroclor-1254	U	U	U	U	U	U	U	U	0.033
Aroclor-1260	U	1.300	0.810 P	0.200	U	0.650	0.190	0.380	0.033
TOTAL PCBs	2.700	1.300	0.810	0.200	4.300	3.750	0.550	2.480	

Qualifiers:

U: Compound analyzed for but not detected.

P: Concentration estimated, possibly biased low since primary and confirmation column concentrations had a percent difference >25%; lower value reported.

Notes:

☐: Value for Total PCBs exceeds 10 parts per million (ppm).

TABLE B-4 (continued)
 NORTROP GRUMMAN CORPORATION
 PLANT 24 ACCESS ROAD SITE
 PCB INVESTIGATION/DELINEATION PROGRAM - FOURTH PHASE
 SOIL SAMPLING RESULTS
 POLYCHLORINATED BIPHENYLS

SAMPLE IDENTIFICATION	B-14E40S S1	B-14E40S S2	B-14E40S S3	B-14E40S S4	B-14E60N S1	B-14E60N S2	B-14E60N S3	B-14E60N S4	CONTRACT REQUIRED DETECTION LIMIT
SAMPLE DEPTH	0 - 0.5'	0.5' - 1.5'	1.5' - 2.5'	2.5' - 3.5'	0 - 0.5'	0.5' - 1.5'	1.5' - 2.5'	2.5' - 3.5'	
DATE OF COLLECTION	11/16/00	11/16/00	11/16/00	11/16/00	11/16/00	11/16/00	11/16/00	11/16/00	
DILUTION FACTOR	10	1	1	1	10	100	100	100	
PERCENT SOLIDS	90	94	86	82	90	94	96	94	
UNITS	(mg/kg)	(mg/kg)	(mg/kg)	(mg/kg)	(mg/kg)	(mg/kg)	(mg/kg)	(mg/kg)	(mg/kg)
Atroclor-1016	U	U	U	U	U	U	U	U	0.033
Atroclor-1221	U	U	U	U	U	U	U	U	0.067
Atroclor-1232	U	U	U	U	U	U	U	U	0.033
Atroclor-1242	U	U	U	U	U	U	U	U	0.033
Atroclor-1248	0.990	P	U	U	3.200	11.000	25.000	30.000	0.033
Atroclor-1254	U	U	U	U	U	U	U	U	0.033
Atroclor-1260	U	0.440	U	U	U	U	U	U	0.033
TOTAL PCBs	0.990	0.440	0	0	3.200	11.000	25.000	30.000	

Qualifiers:

U: Compound analyzed for but not detected.

P: Concentration estimated, possibly biased low since primary and confirmation column concentrations had a percent difference >25%; lower value reported.

Notes:

☐: Value for Total PCBs exceeds 10 parts per million (ppm).

TABLE B-4 (continued)
 NORTHROP GRUMMAN CORPORATION
 PLANT 24 ACCESS ROAD SITE
 PCB INVESTIGATION/DELINEATION PROGRAM - FOURTH PHASE
 SOIL SAMPLING RESULTS
 POLYCHLORINATED BIPHENYLS

SAMPLE IDENTIFICATION	B-14E60N S5	B-14E60N S6	B-14E60S S1	B-14E60S S2	B-14E60S S3	B-14E60S S4	B-15W20N S1	B-15W20N S2	CONTRACT REQUIRED DETECTION LIMIT
SAMPLE DEPTH	3.5' - 4.5'	4.5' - 5.5'	0 - 0.5'	0.5' - 1.5'	1.5' - 2.5'	2.5' - 3.5'	0 - 0.5'	0.5' - 1.5'	
DATE OF COLLECTION	11/16/00	11/16/00	11/16/00	11/16/00	11/16/00	11/16/00	11/16/00	11/16/00	
DILUTION FACTOR	1	1	5	50	1	1	1	50	
PERCENT SOLIDS	88	97	92	92	93	88	85	96	
UNITS	(mg/kg)	(mg/kg)	(mg/kg)	(mg/kg)	(mg/kg)	(mg/kg)	(mg/kg)	(mg/kg)	(mg/kg)
Aroclor-1016	U	U	U	U	U	U	U	U	0.033
Aroclor-1221	U	U	U	U	U	U	U	U	0.067
Aroclor-1232	U	U	U	U	U	U	U	U	0.033
Aroclor-1242	U	U	U	U	U	U	U	U	0.033
Aroclor-1248	0.840	U	2.100	18.000	0.170	U	1.400	15.000	0.033
Aroclor-1254	U	U	U	U	U	U	U	U	0.033
Aroclor-1260	U	U	U	U	0.180	0.059	0.440	U	0.033
TOTAL PCBs	0.840	0	2.100	18.000	0.350	0.059	1.840	15.000	

Qualifiers:

U: Compound analyzed for but not detected.

P: Concentration estimated, possibly biased low since primary and confirmation column concentrations had a percent difference >25%; lower value reported.

Notes:

: Value for Total PCBs exceeds 10 parts per million (ppm).

TABLE B-4 (continued)
 NORTHROP GRUMMAN CORPORATION
 PLANT 24 ACCESS ROAD SITE
 PCB INVESTIGATION/DELINEATION PROGRAM - FOURTH PHASE
 SOIL SAMPLING RESULTS
 POLYCHLORINATED BIPHENYLS

SAMPLE IDENTIFICATION	B-15W20N S3	B-15W20N S4	B-15E20 S1	B-15E20 S2	B-15E20 S3	B-15E20 S4	B-15E20 S5	B-15E20 S6	CONTRACT REQUIRED DETECTION LIMIT
SAMPLE DEPTH	1.5' - 2.5'	2.5' - 3.5'	0 - 0.5'	0.5' - 1.5'	1.5' - 2.5'	2.5' - 3.5'	3.5' - 4.5'	4.5' - 5.5'	
DATE OF COLLECTION	11/16/00	11/16/00	11/16/00	11/16/00	11/16/00	11/16/00	11/16/00	11/16/00	
DILUTION FACTOR	1	1	20	10	5000	100	1	1	
PERCENT SOLIDS	93	96	86	89	86	82	95	96	
UNITS	(mg/kg)	(mg/kg)	(mg/kg)	(mg/kg)	(mg/kg)	(mg/kg)	(mg/kg)	(mg/kg)	(mg/kg)
Aroclor-1016	U	U	U	U	U	U	U	U	0.033
Aroclor-1221	U	U	U	U	U	U	U	U	0.067
Aroclor-1232	U	U	U	U	U	U	U	U	0.033
Aroclor-1242	U	U	U	U	U	U	U	U	0.033
Aroclor-1248	0.076	0.650	12.000	5.600	3,400.000	57.000	0.210	U	0.033
Aroclor-1254	U	U	U	U	U	U	U	U	0.033
Aroclor-1260	U	0.080	U	U	U	U	U	U	0.033
TOTAL PCBs	0.076	0.730	12.000	5.600	3,400.000	57.000	0.210	0	

Qualifiers:

- U: Compound analyzed for but not detected.
- P: Concentration estimated, possibly biased low since primary and confirmation column concentrations had a percent difference >25%; lower value reported.

Notes:

☐: Value for Total PCBs exceeds 10 parts per million (ppm).

TABLE B-4 (continued)
NORTHROP GRUMMAN CORPORATION
PLANT 24 ACCESS ROAD SITE
PCB INVESTIGATION/DELINEATION PROGRAM - FOURTH PHASE
SOIL SAMPLING RESULTS
POLYCHLORINATED BIPHENYLS

SAMPLE IDENTIFICATION	B-15E40 S1	B-15E40 S2	B-15E40 S3	B-15E40 S4	B-15E60 S1	B-15E60 S2	B-15E60 S3	B-15E60 S4	CONTRACT REQUIRED DETECTION LIMIT (mg/kg)
SAMPLE DEPTH	0 - 0.5'	0.5' - 1.5'	1.5' - 2.5'	2.5' - 3.5'	0 - 0.5'	0.5' - 1.5'	1.5' - 2.5'	2.5' - 3.5'	
DATE OF COLLECTION	11/16/00	11/16/00	11/16/00	11/16/00	11/16/00	11/16/00	11/16/00	11/16/00	
DILUTION FACTOR	100	1	1	1	10	50	100	100	
PERCENT SOLIDS	86	88	92	85	94	88	91	86	
UNITS	(mg/kg)	(mg/kg)	(mg/kg)	(mg/kg)	(mg/kg)	(mg/kg)	(mg/kg)	(mg/kg)	(mg/kg)
Atroclor-1016	U	U	U	U	U	U	U	U	0.033
Atroclor-1221	U	U	U	U	U	U	U	U	0.067
Atroclor-1232	U	U	U	U	U	U	U	U	0.033
Atroclor-1242	U	U	U	U	U	U	U	U	0.033
Atroclor-1248	51.000	1.000	0.690	0.140	2.200	29.000	48.000	56.000	0.033
Atroclor-1254	U	U	U	U	U	U	U	U	0.033
Atroclor-1260	U	U	U	U	U	U	U	U	0.033
TOTAL PCBs	51.000	1.000	0.690	0.140	2.200	29.000	48.000	56.000	

Qualifiers:

- U: Compound analyzed for but not detected.
- P: Concentration estimated, possibly biased low since primary and confirmation column concentrations had a percent difference >25%; lower value reported.

Notes:

☐: Value for Total PCBs exceeds 10 parts per million (ppm).

TABLE B-4 (continued)
 NORTHROP GRUMMAN CORPORATION
 PLANT 24 ACCESS ROAD SITE
 PCB INVESTIGATION/DELINEATION PROGRAM - FOURTH PHASE
 SOIL SAMPLING RESULTS
 POLYCHLORINATED BIPHENYLS

SAMPLE IDENTIFICATION	B-15E60 S5	B-15E60 S6	B-15E80 S1	B-15E80 S2	B-15E80 S3	B-15E80 S4	B-15SE40 S1	B-15SE40 S2	CONTRACT REQUIRED DETECTION LIMIT
SAMPLE DEPTH	3.5' - 4.5'	4.5' - 5.5'	0 - 0.5'	0.5' - 1.5'	1.5' - 2.5'	2.5' - 3.5'	0 - 0.5'	0.5' - 1.5'	
DATE OF COLLECTION	11/16/00	11/16/00	11/16/00	11/16/00	11/16/00	11/16/00	11/16/00	11/16/00	
DILUTION FACTOR	1	1	1	1	10	1	10	100	
PERCENT SOLIDS	84	96	86	98	87	89	85	88	
UNITS	(mg/kg)	(mg/kg)	(mg/kg)	(mg/kg)	(mg/kg)	(mg/kg)	(mg/kg)	(mg/kg)	(mg/kg)
Aroclor-1016	U	U	U	U	U	U	U	U	0.033
Aroclor-1221	U	U	U	U	U	U	U	U	0.067
Aroclor-1232	U	U	U	U	U	U	U	U	0.033
Aroclor-1242	U	U	U	U	U	U	U	U	0.033
Aroclor-1248	U	U	U	0.560	2.700	U	5.400	50.000	0.033
Aroclor-1254	U	U	0.350	U	U	0.960	U	U	0.033
Aroclor-1260	U	U	U	U	U	U	U	U	0.033
TOTAL PCBs	0	0	0.350	0.560	2.700	0.960	5.400	50.000	

Notes:

U: Compound analyzed for but not detected.
 P: Concentration estimated, possibly biased low since primary and confirmation column concentrations had a percent difference >25%; lower value reported.

Notes:

☐: Value for Total PCBs exceeds 10 parts per million (ppm).

TABLE B-4 (continued)
NORTHROP GRUMMAN CORPORATION
PLANT 24 ACCESS ROAD SITE
PCB INVESTIGATION/DELINEATION PROGRAM - FOURTH PHASE
SOIL SAMPLING RESULTS
POLYCHLORINATED BIPHENYLS

SAMPLE IDENTIFICATION	B-15SE40 S3	B-15SE40 S4	B-15SE40 S5	B-15SE40 S6	B-15SE60 S1	B-15SE60 S2	B-15SE60 S3	B-15SE60 S4	CONTRACT REQUIRED DETECTION LIMIT
SAMPLE DEPTH	1.5' - 2.5'	2.5' - 3.5'	3.5' - 4.5'	4.5' - 5.5'	0 - 0.5'	0.5' - 1.5'	1.5' - 2.5'	2.5' - 3.5'	
DATE OF COLLECTION	11/16/00	11/16/00	11/16/00	11/16/00	11/16/00	11/16/00	11/16/00	11/16/00	
DILUTION FACTOR	100	100	1	1	10	10	50	50	
PERCENT SOLIDS	88	84	90	97	86	90	89	87	
UNITS	(mg/kg)	(mg/kg)	(mg/kg)	(mg/kg)	(mg/kg)	(mg/kg)	(mg/kg)	(mg/kg)	(mg/kg)
Aroclor-1016	U	U	U	U	U	U	U	U	0.033
Aroclor-1221	U	U	U	U	U	U	U	U	0.067
Aroclor-1232	U	U	U	U	U	U	U	U	0.033
Aroclor-1242	U	U	U	U	U	U	U	U	0.033
Aroclor-1248	67.000	89.000	0.220	U	7.500	14.000	43.000	31.000	0.033
Aroclor-1254	U	U	U	U	U	U	U	U	0.033
Aroclor-1260	U	U	U	U	U	U	U	U	0.033
TOTAL PCBs	67.000	89.000	0.220	0	7.500	14.000	43.000	31.000	

Qualifiers:

U: Compound analyzed for but not detected.

P: Concentration estimated, possibly biased low since primary and confirmation column concentrations had a percent difference >25%; lower value reported.

Notes:

☐: Value for Total PCBs exceeds 10 parts per million (ppm).

TABLE B-4 (continued)
 NORTHROP GRUMMAN CORPORATION
 PLANT 24 ACCESS ROAD SITE
 PCB INVESTIGATION/DELINEATION PROGRAM - FOURTH PHASE
 SOIL SAMPLING RESULTS
 POLYCHLORINATED BIPHENYLS

SAMPLE IDENTIFICATION	B-15SE60 S5	B-15SE60 S6	B-15SE80 S1	B-15SE80 S2	B-15SE80 S3	B-15SE80 S4	B-16E40 S1	B-16E40 S2	CONTRACT REQUIRED DETECTION LIMIT
SAMPLE DEPTH	3.5' - 4.5'	4.5' - 5.5'	0 - 0.5'	0.5' - 1.5'	1.5' - 2.5'	2.5' - 3.5'	0 - 0.5'	0.5' - 1.5'	
DATE OF COLLECTION	11/16/00	11/16/00	11/16/00	11/16/00	11/16/00	11/16/00	11/16/00	11/16/00	
DILUTION FACTOR	1	1	1	1	1	10	10	50	
PERCENT SOLIDS	93	95	90	91	94	93	89	90	
UNITS	(mg/kg)	(mg/kg)	(mg/kg)	(mg/kg)	(mg/kg)	(mg/kg)	(mg/kg)	(mg/kg)	(mg/kg)
Aroclor-1016	U	U	U	U	U	U	U	U	0.033
Aroclor-1221	U	U	U	U	U	U	U	U	0.067
Aroclor-1232	U	U	U	U	U	U	U	U	0.033
Aroclor-1242	U	U	U	U	U	U	U	U	0.033
Aroclor-1248	0.570	0.850	0.700	0.760	0.880	5.600	13.000	36.000	0.033
Aroclor-1254	U	U	U	U	U	U	U	U	0.033
Aroclor-1260	U	U	0.170	0.200	0.300	1.400	U	U	0.033
TOTAL PCBs	0.570	0.850	0.870	0.960	1.180	7.000	13.000	36.000	

Qualifiers:

U: Compound analyzed for but not detected.

P: Concentration estimated, possibly biased low since primary and confirmation column concentrations had a percent difference >25%; lower value reported.

Notes:

☐: Value for Total PCBs exceeds 10 parts per million (ppm).

TABLE B-4 (continued)
 NORTHROP GRUMMAN CORPORATION
 PLANT 24 ACCESS ROAD SITE
 PCB INVESTIGATION/DELINEATION PROGRAM - FOURTH PHASE
 SOIL SAMPLING RESULTS
 POLYCHLORINATED BIPHENYLS

SAMPLE IDENTIFICATION	B-16E40 S3	B-16E40 S4	B-16E40 S5	B-16E40 S6	B-16E60 S1	B-16E60 S2	B-16E60 S3	B-16E60 S4	CONTRACT REQUIRED DETECTION LIMIT
SAMPLE DEPTH	1.5' - 2.5'	2.5' - 3.5'	3.5' - 4.5'	4.5' - 5.5'	0 - 0.5'	0.5' - 1.5'	1.5' - 2.5'	2.5' - 3.5'	(mg/kg)
DATE OF COLLECTION	11/16/00	11/16/00	11/16/00	11/16/00	11/16/00	11/16/00	11/16/00	11/16/00	(mg/kg)
DILUTION FACTOR	50	1	1	1	10	50	50	1	(mg/kg)
PERCENT SOLIDS	84	92	94	93	95	88	86	79	(mg/kg)
UNITS	(mg/kg)	(mg/kg)	(mg/kg)	(mg/kg)	(mg/kg)	(mg/kg)	(mg/kg)	(mg/kg)	(mg/kg)
Aroclor-1016	U	U	U	U	U	U	U	U	0.033
Aroclor-1221	U	U	U	U	U	U	U	U	0.067
Aroclor-1232	U	U	U	U	U	U	U	U	0.033
Aroclor-1242	U	U	U	U	U	U	U	U	0.033
Aroclor-1248	42.000	0.250	0.059	U	2.400	43.000	32.000	U	0.033
Aroclor-1254	U	U	U	U	U	U	U	U	0.033
Aroclor-1260	U	U	U	U	U	U	U	U	0.033
TOTAL PCBs	42.000	0.250	0.059	0	2.400	43.000	32.000	0	

Qualifiers:

U: Compound analyzed for but not detected.

P: Concentration estimated, possibly biased low since primary and confirmation column concentrations had a percent difference >25%; lower value reported.

Notes:

☐: Value for Total PCBs exceeds 10 parts per million (ppm).

TABLE B-4 (continued)
 NORTHROP GRUMMAN CORPORATION
 PLANT 24 ACCESS ROAD SITE
 PCB INVESTIGATION/DELINEATION PROGRAM - FOURTH PHASE
 SOIL SAMPLING RESULTS
 POLYCHLORINATED BIPHENYLS

SAMPLE IDENTIFICATION	B-16E60 S5	B-16E60 S6	B-16E80 S1	B-16E80 S2	B-16E80 S3	B-16E80 S4	B-28 S1	B-28 S2	CONTRACT REQUIRED DETECTION LIMIT
SAMPLE DEPTH	3.5' - 4.5'	4.5' - 5.5'	0 - 0.5'	0.5' - 1.5'	1.5' - 2.5'	2.5' - 3.5'	0 - 0.5'	0.5' - 1.5'	
DATE OF COLLECTION	11/16/00	11/16/00	11/16/00	11/16/00	11/16/00	11/16/00	11/16/00	11/16/00	
DILUTION FACTOR	1	1	1	1	1	1	1	1	
PERCENT SOLIDS	94	98	95	90	90	88	91	94	
UNITS	(mg/kg)	(mg/kg)	(mg/kg)	(mg/kg)	(mg/kg)	(mg/kg)	(mg/kg)	(mg/kg)	(mg/kg)
Aroclor-1016	U	U	U	U	U	U	U	U	0.033
Aroclor-1221	U	U	U	U	U	U	U	U	0.067
Aroclor-1232	U	U	U	U	U	U	U	U	0.033
Aroclor-1242	U	U	U	U	U	U	U	U	0.033
Aroclor-1248	U	U	0.500	0.160	0.300	U	U	U	0.033
Aroclor-1254	U	U	0.180	0.076	0.092	U	U	U	0.033
Aroclor-1260	U	U	U	U	U	0.052	U	U	0.033
TOTAL PCBs	0	0	0.680	0.236	0.392	0.052	0	0	

Qualifiers:

U: Compound analyzed for but not detected.

P: Concentration estimated, possibly biased low since primary and confirmation column concentrations had a percent difference >25%; lower value reported.

Notes:

☐: Value for Total PCBs exceeds 10 parts per million (ppm).

TABLE B-4 (continued)
 NORTHTROP GRUMMAN CORPORATION
 PLANT 24 ACCESS ROAD SITE
 PCB INVESTIGATION/DELINEATION PROGRAM - FOURTH PHASE
 SOIL SAMPLING RESULTS
 POLYCHLORINATED BIPHENYLS

SAMPLE IDENTIFICATION	B-28 S3	B-28 S4								CONTRACT REQUIRED DETECTION LIMIT
SAMPLE DEPTH	1.5' - 2.5'	2.5' - 3.5'								
DATE OF COLLECTION	11/16/00	11/16/00								
DILUTION FACTOR	1	1								
PERCENT SOLIDS	93	91								
UNITS	(mg/kg)	(mg/kg)								(mg/kg)
Aroclor-1016	U	U								0.033
Aroclor-1221	U	U								0.067
Aroclor-1232	U	U								0.033
Aroclor-1242	U	U								0.033
Aroclor-1248	U	U								0.033
Aroclor-1254	U	U								0.033
Aroclor-1260	U	U								0.033
TOTAL PCBs	0	0								

Qualifiers:

U: Compound analyzed for but not detected.

P: Concentration estimated, possibly biased low since primary and confirmation column concentrations had a percent difference >25%; lower value reported.

Notes:

: Value for Total PCBs exceeds 10 parts per million (ppm).

FIFTH PHASE SOIL SAMPLING RESULTS

TABLE B-5
NORTHROP GRUMMAN CORPORATION
PLANT 24 ACCESS ROAD SITE
PCB INVESTIGATION/DELINEATION PROGRAM - FIFTH PHASE
SOIL SAMPLING RESULTS
POLYCHLORINATED BIPHENYLS

SAMPLE IDENTIFICATION	B-12E30N S1		B-12E30N S2		B-12E30N S3		B-12E30N S4		B-12E30S S1		B-12E30S S2		B-12E30S S3		B-12E30S S4		CONTRACT REQUIRED DETECTION LIMIT	
	0 - 0.5'	12/18/00	0.5' - 1.5'	12/18/00	1.5' - 2.5'	12/18/00	2.5' - 3.5'	12/18/00	0 - 0.5'	12/18/00	0.5' - 1.5'	12/18/00	1.5' - 2.5'	12/18/00	2.5' - 3.5'	12/18/00		(mg/kg)
DILUTION FACTOR	10	10	10	10	10	10	10	10	10	10	10	10	10	10	10	10		
PERCENT SOLIDS	91	93	94	91	94	91	91	91	86	86	91	91	88	88	91	91		
UNITS	(mg/kg)	(mg/kg)	(mg/kg)	(mg/kg)	(mg/kg)	(mg/kg)	(mg/kg)	(mg/kg)	(mg/kg)	(mg/kg)	(mg/kg)	(mg/kg)	(mg/kg)	(mg/kg)	(mg/kg)	(mg/kg)		(mg/kg)
Aroclor-1016	U	U	U	U	U	U	U	U	U	U	U	U	U	U	U	U	U	0.033
Aroclor-1221	U	U	U	U	U	U	U	U	U	U	U	U	U	U	U	U	U	0.067
Aroclor-1232	U	U	U	U	U	U	U	U	U	U	U	U	U	U	U	U	U	0.033
Aroclor-1242	U	U	U	U	U	U	U	U	U	U	U	U	U	U	U	U	U	0.033
Aroclor-1248	7.200	0.900	1.400	8.600	1.400	6.600	1.300	0.370	0.370	0.370	0.370	0.370	0.370	0.370	0.370	0.370	0.370	0.033
Aroclor-1254	U	U	U	U	U	U	U	U	U	U	U	U	U	U	U	U	U	0.033
Aroclor-1260	U	U	U	U	U	U	U	U	U	U	U	U	U	U	U	U	U	0.033
TOTAL PCBs	7.200	0.900	1.400	8.600	1.400	8.300	1.300	0.370	0.370	0.370	0.370	0.370	0.370	0.370	0.370	0.370	0.370	0.033

Qualifiers:

- U: Compound analyzed for but not detected.
- J: Concentration is less than the CRDL, value estimated.
- P: Concentration estimated, possibly biased low since primary and confirmation column concentrations had a percent difference >25%; lower value reported.

Notes:

☐: Value for Total PCBs exceeds 10 parts per million (ppm).

TABLE B-5 (continued)
 NORTHROP GRUMMAN CORPORATION
 PLANT 24 ACCESS ROAD SITE
 PCB INVESTIGATION/DELINEATION PROGRAM - FIFTH PHASE
 SOIL SAMPLING RESULTS
 POLYCHLORINATED BIPHENYLS

SAMPLE IDENTIFICATION	B-12E40 S1	B-12E40 S2	B-12E40 S3	B-12E40 S4	B-12E40 S5	B-12E40 S6	B-12E60 S1	B-12E60 S2	CONTRACT REQUIRED DETECTION LIMIT
SAMPLE DEPTH	0 - 0.5'	0.5' - 1.5'	1.5' - 2.5'	2.5' - 3.5'	3.5' - 4.5'	4.5' - 5.5'	0 - 0.5'	0.5' - 1.5'	(mg/kg)
DATE OF COLLECTION	12/18/00	12/18/00	12/18/00	12/18/00	12/18/00	12/18/00	12/18/00	12/18/00	(mg/kg)
DILUTION FACTOR	10	10	10	10	10	10	5	5	(mg/kg)
PERCENT SOLIDS	95	94	92	95	91	98	89	93	(mg/kg)
UNITS	(mg/kg)	(mg/kg)	(mg/kg)	(mg/kg)	(mg/kg)	(mg/kg)	(mg/kg)	(mg/kg)	(mg/kg)
Aroclor-1016	U	U	U	U	U	U	U	U	0.033
Aroclor-1221	U	U	U	U	U	U	U	U	0.067
Aroclor-1232	U	U	U	U	U	U	U	U	0.033
Aroclor-1242	U	U	U	U	U	U	U	U	0.033
Aroclor-1248	1.000	0.440	15.000	2.900	6.400	U	0.580	U	0.033
Aroclor-1254	U	U	U	U	U	U	U	U	0.033
Aroclor-1260	U	U	U	U	U	U	U	U	0.033
TOTAL PCBs	1.000	0.440	15.000	2.900	6.400	0	0.580	0	

Qualifiers:

U: Compound analyzed for but not detected.

J: Concentration is less than the CRDL, value estimated.

P: Concentration estimated, possibly biased low since primary and confirmation column concentrations had a percent difference >25%; lower value reported.

Notes:

☐: Value for Total PCBs exceeds 10 parts per million (ppm).

TABLE B-5 (continued)
 NORTHROP GRUMMAN CORPORATION
 PLANT 24 ACCESS ROAD SITE
 PCB INVESTIGATION/DELINEATION PROGRAM - FIFTH PHASE
 SOIL SAMPLING RESULTS
 POLYCHLORINATED BIPHENYLS

SAMPLE IDENTIFICATION	B-12E60 S3	B-12E60 S4	B-12E80 S1	B-12E80 S2	B-12E80 S3	B-12E80 S4	B-14N20 S1	B-14N20 S2	CONTRACT REQUIRED DETECTION LIMIT
SAMPLE DEPTH	1.5' - 2.5'	2.5' - 3.5'	0 - 0.5'	0.5' - 1.5'	1.5' - 2.5'	2.5' - 3.5'	0 - 0.5'	0.5' - 1.5'	(mg/kg)
DATE OF COLLECTION	12/18/00	12/18/00	12/18/00	12/18/00	12/18/00	12/18/00	12/18/00	12/18/00	
DILUTION FACTOR	10	10	5	5	5	5	5	5	
PERCENT SOLIDS	94	90	92	93	94	95	89	93	
UNITS	(mg/kg)	(mg/kg)	(mg/kg)	(mg/kg)	(mg/kg)	(mg/kg)	(mg/kg)	(mg/kg)	(mg/kg)
Aroclor-1016	U	U	U	U	U	U	U	U	0.033
Aroclor-1221	U	U	U	U	U	U	U	U	0.067
Aroclor-1232	U	U	U	U	U	U	U	U	0.033
Aroclor-1242	U	U	U	U	U	U	U	U	0.033
Aroclor-1248	1.300	U	0.770	0.220	U	U	0.880	2.000	0.033
Aroclor-1254	U	U	U	U	U	U	U	U	0.033
Aroclor-1260	U	U	U	U	U	U	U	U	0.033
TOTAL PCBs	1.300	0	0.770	0.220	0	0	0.880	2.000	

Qualifiers:

- U: Compound analyzed for but not detected.
- J: Concentration is less than the CRDL, value estimated.
- P: Concentration estimated, possibly biased low since primary and confirmation column concentrations had a percent difference >25%; lower value reported.

Notes:

: Value for Total PCBs exceeds 10 parts per million (ppm).

TABLE B-5 (continued)
 NORTHROP GRUMMAN CORPORATION
 PLANT 24 ACCESS ROAD SITE
 PCB INVESTIGATION/DELINEATION PROGRAM - FIFTH PHASE
 SOIL SAMPLING RESULTS
 POLYCHLORINATED BIPHENYLS

SAMPLE IDENTIFICATION	B-14N20 S3	B-14N20 S4	B-14N30 S1	B-14N30 S2	B-14N30 S3	B-14N30 S4	B-14E20N30 S1	B-14E20N30 S2	CONTRACT REQUIRED DETECTION LIMIT
SAMPLE DEPTH	1.5' - 2.5'	2.5' - 3.5'	0 - 0.5'	0.5' - 1.5'	1.5' - 2.5'	2.5' - 3.5'	0 - 0.5'	0.5' - 1.5'	(mg/kg)
DATE OF COLLECTION	12/18/00	12/18/00	12/18/00	12/18/00	12/18/00	12/18/00	12/18/00	12/18/00	(mg/kg)
DILUTION FACTOR	5	5	10	10	10	10	100	10	(mg/kg)
PERCENT SOLIDS	90	94	90	96	96	97	94	96	(mg/kg)
UNITS	(mg/kg)	(mg/kg)	(mg/kg)	(mg/kg)	(mg/kg)	(mg/kg)	(mg/kg)	(mg/kg)	(mg/kg)
Aroclor-1016	U	U	U	U	U	U	U	U	0.033
Aroclor-1221	U	U	U	U	U	U	U	U	0.067
Aroclor-1232	U	U	U	U	U	U	U	U	0.033
Aroclor-1242	U	U	U	U	U	U	U	U	0.033
Aroclor-1248	0.660	U	3.900	U	U	U	16.000	3.100	0.033
Aroclor-1254	U	U	U	U	U	U	U	U	0.033
Aroclor-1260	U	U	U	U	U	U	U	U	0.033
TOTAL PCBs	0.660	0	3.900	0	0	0	16.000	3.100	

Qualifiers:
 U: Compound analyzed for but not detected.
 J: Concentration is less than the CRDL, value estimated.
 P: Concentration estimated, possibly biased low since primary and confirmation column concentrations had a percent difference >25%; lower value reported.

Notes:
: Value for Total PCBs exceeds 10 parts per million (ppm).

TABLE B-5 (continued)
 NORTHROP GRUMMAN CORPORATION
 PLANT 24 ACCESS ROAD SITE
 PCB INVESTIGATION/DELINEATION PROGRAM - FIFTH PHASE
 SOIL SAMPLING RESULTS
 POLYCHLORINATED BIPHENYLS

SAMPLE IDENTIFICATION	B-14E20N30 S3		B-14E20N30 S4		B-14E40N30 S1		B-14E40N30 S2		B-14E40N30 S3		B-14E40N30 S4		B-14E60N30 S1		B-14E60N30 S2		CONTRACT REQUIRED DETECTION LIMIT
	SAMPLE DEPTH	DATE OF COLLECTION	DILUTION FACTOR	PERCENT SOLIDS	UNITS	(mg/kg)	(mg/kg)	(mg/kg)	(mg/kg)	(mg/kg)	(mg/kg)	(mg/kg)	(mg/kg)	(mg/kg)	(mg/kg)	(mg/kg)	
Aroclor-1016	1.5' - 2.5'	12/18/00	10	96	U	U	U	U	U	U	U	U	U	U	U	U	0.033
Aroclor-1221	1.5' - 2.5'	12/18/00	10	94	U	U	U	U	U	U	U	U	U	U	U	U	0.067
Aroclor-1232	1.5' - 2.5'	12/18/00	10	94	U	U	U	U	U	U	U	U	U	U	U	U	0.033
Aroclor-1242	1.5' - 2.5'	12/18/00	10	94	U	U	U	U	U	U	U	U	U	U	U	U	0.033
Aroclor-1248	1.5' - 2.5'	12/18/00	10	94	U	U	U	U	U	U	U	U	U	U	U	U	0.033
Aroclor-1254	1.5' - 2.5'	12/18/00	10	94	U	U	U	U	U	U	U	U	U	U	U	U	0.033
Aroclor-1260	1.5' - 2.5'	12/18/00	10	94	U	U	U	U	U	U	U	U	U	U	U	U	0.033
TOTAL PCBs						0	0.730	10.000	24.000	6.500	0.400	0.400	4.600	4.600	4.600		

Qualifiers:
 U: Compound analyzed for but not detected.
 J: Concentration is less than the CRDL, value estimated.
 P: Concentration estimated, possibly biased low since primary and confirmation column concentrations had a percent difference >25%; lower value reported.

Notes:
 □: Value for Total PCBs exceeds 10 parts per million (ppm).

TABLE B-5 (continued)
 NORTHROP GRUMMAN CORPORATION
 PLANT 24 ACCESS ROAD SITE
 PCB INVESTIGATION/DELINEATION PROGRAM - FIFTH PHASE
 SOIL SAMPLING RESULTS
 POLYCHLORINATED BIPHENYLS

SAMPLE IDENTIFICATION	B-14E60N30 S3	B-14E60N30 S4	B-15E20N S1	B-15E20N S2	B-15E20N S3	B-15E20N S4	B-15E40N S1	B-15E40N S2	CONTRACT REQUIRED DETECTION LIMIT
SAMPLE DEPTH	1.5' - 2.5'	2.5' - 3.5'	0 - 0.5'	0.5' - 1.5'	1.5' - 2.5'	2.5' - 3.5'	0 - 0.5'	0.5' - 1.5'	(mg/kg)
DATE OF COLLECTION	12/18/00	12/18/00	12/18/00	12/18/00	12/18/00	12/18/00	12/18/00	12/18/00	
DILUTION FACTOR	10	10	10	10	10	10	10	10	
PERCENT SOLIDS	96	93	85	92	97	97	82	82	
UNITS	(mg/kg)	(mg/kg)	(mg/kg)	(mg/kg)	(mg/kg)	(mg/kg)	(mg/kg)	(mg/kg)	(mg/kg)
Aroclor-1016	U	U	U	U	U	U	U	U	0.033
Aroclor-1221	U	U	U	U	U	U	U	U	0.067
Aroclor-1232	U	U	U	U	U	U	U	U	0.033
Aroclor-1242	U	U	U	U	U	U	U	U	0.033
Aroclor-1248	U	1.700	0.790	0.640	U	U	0.920	1.900	0.033
Aroclor-1254	U	U	U	U	U	U	U	U	0.033
Aroclor-1260	U	U	U	U	U	U	U	U	0.033
TOTAL PCBs	0	1.700	0.790	0.640	0	0	0.920	1.900	

Qualifiers:

- U: Compound analyzed for but not detected.
- J: Concentration is less than the CRDL, value estimated.
- P: Concentration estimated, possibly biased low since primary and confirmation column concentrations had a percent difference >25%; lower value reported.

Notes:

☐: Value for Total PCBs exceeds 10 parts per million (ppm).

TABLE B-5 (continued)
 NORTHROP GRUMMAN CORPORATION
 PLANT 24 ACCESS ROAD SITE
 PCB INVESTIGATION/DELINEATION PROGRAM - FIFTH PHASE
 SOIL SAMPLING RESULTS
 POLYCHLORINATED BIPHENYLS

SAMPLE IDENTIFICATION	B-15E40N S3	B-15E40N S4	B-15E60N S1	B-15E60N S2	B-15E60N S3	B-15E60N S4	B-14A S5	B-14A S6	CONTRACT REQUIRED DETECTION LIMIT (mg/kg)
	1.5' - 2.5' 12/18/00 10 94 (mg/kg)	2.5' - 3.5' 12/18/00 10 96 (mg/kg)	0 - 0.5' 12/18/00 10 86 (mg/kg)	0.5' - 1.5' 12/18/00 10 89 (mg/kg)	1.5' - 2.5' 12/18/00 10 92 (mg/kg)	2.5' - 3.5' 12/18/00 10 83 (mg/kg)	3.5' - 4.5' 12/18/00 5 82 (mg/kg)	4.5' - 5.5' 12/18/00 5 87 (mg/kg)	
Aroclor-1016	U	U	U	U	U	U	U	U	0.033
Aroclor-1221	U	U	U	U	U	U	U	U	0.067
Aroclor-1232	U	U	U	U	U	U	U	U	0.033
Aroclor-1242	U	U	U	U	U	U	U	U	0.033
Aroclor-1248	0.740	0.370	U	U	U	U	U	U	0.033
Aroclor-1254	U	U	U	U	U	U	U	U	0.033
Aroclor-1260	U	U	U	U	U	U	U	U	0.033
TOTAL PCBs	0.740	0.370	0	0	0	0	4.500	0	

Qualifiers:

- U: Compound analyzed for but not detected.
- J: Concentration is less than the CRDL, value estimated.
- P: Concentration estimated, possibly biased low since primary and confirmation column concentrations had a percent difference >25%; lower value reported.

Notes:

☐: Value for Total PCBs exceeds 10 parts per million (ppm).

TABLE B-5 (continued)
 NORTROP GRUMMAN CORPORATION
 PLANT 24 ACCESS ROAD SITE
 PCB INVESTIGATION/DELINEATION PROGRAM - FIFTH PHASE
 SOIL SAMPLING RESULTS
 POLYCHLORINATED BIPHENYLS

SAMPLE IDENTIFICATION	B-15A S5	B-15A S6							CONTRACT REQUIRED DETECTION LIMIT
SAMPLE DEPTH	3.5' - 4.5'	4.5' - 5.5'							
DATE OF COLLECTION	12/18/00	12/18/00							
DILUTION FACTOR	10	10							
PERCENT SOLIDS	92	94							
UNITS	(mg/kg)	(mg/kg)							(mg/kg)
Aroclor-1016	U	U							0.033
Aroclor-1221	U	U							0.067
Aroclor-1232	U	U							0.033
Aroclor-1242	U	U							0.033
Aroclor-1248	2.800	0.600							0.033
Aroclor-1254	U	U							0.033
Aroclor-1260	U	U							0.033
TOTAL PCBs	2.800	0.600							

Qualifiers:

- U: Compound analyzed for but not detected.
- J: Concentration is less than the CRDL, value estimated.
- P: Concentration estimated, possibly biased low since primary and confirmation column concentrations had a percent difference >25%; lower value reported.

Notes:

: Value for Total PCBs exceeds 10 parts per million (ppm).

SIXTH PHASE SOIL SAMPLING RESULTS

TABLE B-6
NORTHROP GRUMMAN CORPORATION
PLANT 24 ACCESS ROAD SITE
PCB INVESTIGATION/DELINEATION PROGRAM - SIXTH PHASE
SOIL SAMPLING RESULTS
POLYCHLORINATED BIPHENYLS

SAMPLE IDENTIFICATION	B-12E40N S1	B-12E40N S2	B-12E40N S3	B-12E40N S4	B-12E40S S1	B-12E40S S2	B-12E40S S3	B-12E40S S4	CONTRACT REQUIRED DETECTION LIMIT (mg/kg)
	0 - 0.5' 4/24/01 1 94	0.5' - 1.5' 4/24/01 1 95	1.5' - 2.5' 4/24/01 1 87	2.5' - 3.5' 4/24/01 1 86	0 - 0.5' 4/24/01 1 96	0.5' - 1.5' 4/24/01 1 93	1.5' - 2.5' 4/24/01 1 92	2.5' - 3.5' 4/24/01 1 94	
DATE OF COLLECTION									
DILUTION FACTOR									
PERCENT SOLIDS									
UNITS	(mg/kg)								
Aroclor-1016	U	U	U	U	U	U	U	U	U
Aroclor-1221	U	U	U	U	U	U	U	U	U
Aroclor-1232	U	U	U	U	U	U	U	U	U
Aroclor-1242	U	U	U	U	U	U	U	U	U
Aroclor-1248	1.100	0.430	0.100	0.090	0.770	0.280	0.490	0.250	0.033
Aroclor-1254	U	U	U	U	0.590	0.260	U	U	0.033
Aroclor-1260	U	U	U	U	U	U	U	U	0.033
TOTAL PCBs	1.100	0.430	0.100	0.090	1.360	0.540	0.490	0.250	

Notes:

U: Value for Total PCBs exceeds 10 parts per million (ppm).

Qualifiers:
 U: Compound analyzed for but not detected.
 P: Concentration estimated, possibly biased low since primary and confirmation column concentrations had a percent difference >25%; lower value reported.

TABLE B-6 (continued)
 NORTHROP GRUMMAN CORPORATION
 PLANT 24 ACCESS ROAD SITE
 PCB INVESTIGATION/DELINEATION PROGRAM - SIXTH PHASE
 SOIL SAMPLING RESULTS
 POLYCHLORINATED BIPHENYLS

SAMPLE IDENTIFICATION	B-12E50 S1	B-12E50 S2	B-12E50 S3	B-12E50 S4	B-14E20N34 S1	B-14E20N34 S2	B-14E20N34 S3	B-14E20N34 S4	CONTRACT REQUIRED DETECTION LIMIT (mg/kg)
SAMPLE DEPTH	0 - 0.5'	0.5' - 1.5'	1.5' - 2.5'	2.5' - 3.5'	0 - 0.5'	0.5' - 1.5'	1.5' - 2.5'	2.5' - 3.5'	
DATE OF COLLECTION	4/24/01	4/24/01	4/24/01	4/24/01	4/24/01	4/24/01	4/24/01	4/24/01	
DILUTION FACTOR	10	1	10	1	1	1	1	1	
PERCENT SOLIDS	94	95	96	89	90	98	96	94	
UNITS	(mg/kg)	(mg/kg)	(mg/kg)	(mg/kg)	(mg/kg)	(mg/kg)	(mg/kg)	(mg/kg)	(mg/kg)
Aroclor-1016	U	U	U	U	U	U	U	U	0.033
Aroclor-1221	U	U	U	U	U	U	U	U	0.067
Aroclor-1232	U	U	U	U	U	U	U	U	0.033
Aroclor-1242	U	U	U	U	U	U	U	U	0.033
Aroclor-1248	5.300	0.420	5.900	1.400	1.200	0.100	U	U	0.033
Aroclor-1254	U	U	U	U	U	U	U	U	0.033
Aroclor-1260	U	U	U	U	U	U	U	U	0.033
TOTAL PCBs	5.300	0.420	5.900	1.400	1.200	0.100	0	0	

Notes:

U: Compound analyzed for but not detected.
 P: Concentration estimated, possibly biased low since primary and confirmation column concentrations had a percent difference >25%; lower value reported.

TABLE B-6 (continued)
 NORTHRUP GRUMMAN CORPORATION
 PLANT 24 ACCESS ROAD SITE
 PCB INVESTIGATION/DELINEATION PROGRAM - SIXTH PHASE
 SOIL SAMPLING RESULTS
 POLYCHLORINATED BIPHENYLS

SAMPLE IDENTIFICATION	B-14E40N34 S1	B-14E40N34 S2	B-14E40N34 S3	B-14E40N34 S4	B-15W20N14 S1	B-15W20N14 S2	B-15W20N14 S3	B-15W20N14 S4	CONTRACT REQUIRED DETECTION LIMIT
	0 - 0.5' 4/24/01	0.5' - 1.5' 4/24/01	1.5' - 2.5' 4/24/01	2.5' - 3.5' 4/24/01	0 - 0.5' 4/24/01	0.5' - 1.5' 4/24/01	1.5' - 2.5' 4/24/01	2.5' - 3.5' 4/24/01	
SAMPLE DEPTH									
DATE OF COLLECTION	4/24/01	4/24/01	4/24/01	4/24/01	4/24/01	4/24/01	4/24/01	4/24/01	
DILUTION FACTOR	1	1	1	1	5	1	1	1	
PERCENT SOLIDS	92	97	98	97	95	94	97	94	
UNITS	(mg/kg)	(mg/kg)	(mg/kg)	(mg/kg)	(mg/kg)	(mg/kg)	(mg/kg)	(mg/kg)	(mg/kg)
Aroclor-1016	U	U	U	U	U	U	U	U	0.033
Aroclor-1221	U	U	U	U	U	U	U	U	0.067
Aroclor-1232	U	U	U	U	U	U	U	U	0.033
Aroclor-1242	U	U	U	U	U	U	U	U	0.033
Aroclor-1248	U	U	U	U	2.500	0.140	U	U	0.033
Aroclor-1254	0.860	U	U	U	U	U	U	U	0.033
Aroclor-1260	U	U	U	U	U	U	U	U	0.033
TOTAL PCBs	0.860	0	0	0	2.500	0.140	0	0	

Notes:
 Qualifiers:
 U: Compound analyzed for but not detected.
 P: Concentration estimated, possibly biased low since primary and confirmation column concentrations had a percent difference >25%; lower value reported.
 □: Value for Total PCBs exceeds 10 parts per million (ppm).

TABLE B-6 (continued)
 NORTHROP GRUMMAN CORPORATION
 PLANT 24 ACCESS ROAD SITE
 PCB INVESTIGATION/DELINEATION PROGRAM - SIXTH PHASE
 SOIL SAMPLING RESULTS
 POLYCHLORINATED BIPHENYLS

SAMPLE IDENTIFICATION	B-16NA S5	B-16NA S6	B-29 S1	B-29 S2	B-29 S3	B-29 S4	B-30 S1	B-30 S2	CONTRACT REQUIRED DETECTION LIMIT
SAMPLE DEPTH	3.5' - 4.5'	4.5' - 5.5'	0 - 0.5'	0.5' - 1.5'	1.5' - 2.5'	2.5' - 3.5'	0 - 0.5'	0.5' - 1.5'	(mg/kg)
DATE OF COLLECTION	4/24/01	4/24/01	4/24/01	4/24/01	4/24/01	4/24/01	4/24/01	4/24/01	(mg/kg)
DILUTION FACTOR	5	1	1	1	1	1	1	1	
PERCENT SOLIDS	86	87	92	94	97	91	96	92	
UNITS	(mg/kg)	(mg/kg)	(mg/kg)	(mg/kg)	(mg/kg)	(mg/kg)	(mg/kg)	(mg/kg)	(mg/kg)
Aroclor-1016	U	U	U	U	U	U	U	U	0.033
Aroclor-1221	U	U	U	U	U	U	U	U	0.067
Aroclor-1232	U	U	U	U	U	U	U	U	0.033
Aroclor-1242	U	U	U	U	U	U	U	U	0.033
Aroclor-1248	U	0.240	0.190	U	U	U	0.530	U	0.033
Aroclor-1254	U	U	0.110	U	U	U	0.340	U	0.033
Aroclor-1260	2.500	U	U	0.140	U	U	U	U	0.033
TOTAL PCBs	2.500	0.240	0.300	0.140	0	0	0.870	0	

Qualifiers:

- U: Compound analyzed for but not detected.
- P: Concentration estimated, possibly biased low since primary and confirmation column concentrations had a percent difference >25%; lower value reported.

Notes:

☐: Value for Total PCBs exceeds 10 parts per million (ppm).

TABLE B-6 (continued)
 NORTROP GRUMMAN CORPORATION
 PLANT 24 ACCESS ROAD SITE
 PCB INVESTIGATION/DELINEATION PROGRAM - SIXTH PHASE
 SOIL SAMPLING RESULTS
 POLYCHLORINATED BIPHENYLS

SAMPLE IDENTIFICATION	B-30 S3	B-30 S4	B-31 S1	B-31 S2	B-31 S3	B-31 S4	B-32 S1	B-32 S2	CONTRACT REQUIRED DETECTION LIMIT
SAMPLE DEPTH	1.5' - 2.5'	2.5' - 3.5'	0 - 0.5'	0.5' - 1.5'	1.5' - 2.5'	2.5' - 3.5'	0 - 0.5'	0.5' - 1.5'	
DATE OF COLLECTION	4/24/01	4/24/01	4/24/01	4/24/01	4/24/01	4/24/01	4/24/01	4/24/01	
DILUTION FACTOR	1	1	1	1	1	1	1	10	
PERCENT SOLIDS	83	93	98	88	91	90	93	91	
UNITS	(mg/kg)	(mg/kg)	(mg/kg)	(mg/kg)	(mg/kg)	(mg/kg)	(mg/kg)	(mg/kg)	(mg/kg)
Aroclor-1016	U	U	U	U	U	U	U	U	0.033
Aroclor-1221	U	U	U	U	U	U	U	U	0.067
Aroclor-1232	U	U	U	U	U	U	U	U	0.033
Aroclor-1242	U	U	U	U	U	U	U	16.000	0.033
Aroclor-1248	U	U	0.560	U	U	U	0.660	U	0.033
Aroclor-1254	U	U	U	0.052	U	U	U	U	0.033
Aroclor-1260	U	U	U	U	U	U	U	U	0.033
TOTAL PCBs	0	0	0.560	0.052	0	0	0.660	16.000	

Qualifiers:

- U: Compound analyzed for but not detected.
- P: Concentration estimated, possibly biased low since primary and confirmation column concentrations had a percent difference >25%; lower value reported.

Notes:
 : Value for Total PCBs exceeds 10 parts per million (ppm).

TABLE B-6 (continued)
NORTHROP GRUMMAN CORPORATION
PLANT 24 ACCESS ROAD SITE
PCB INVESTIGATION/DELINEATION PROGRAM - SIXTH PHASE
SOIL SAMPLING RESULTS
POLYCHLORINATED BIPHENYLS

SAMPLE IDENTIFICATION	B-32 S3	B-32 S4	B-33 S1	B-33 S2	B-33 S3	B-33 S4	CONTRACT REQUIRED DETECTION LIMIT
SAMPLE DEPTH	1.5' - 2.5'	2.5' - 3.5'	0 - 0.5'	0.5' - 1.5'	1.5' - 2.5'	2.5' - 3.5'	
DATE OF COLLECTION	4/24/01	4/24/01	4/24/01	4/24/01	4/24/01	4/24/01	
DILUTION FACTOR	1	1	1	1	1	1	
PERCENT SOLIDS	90	94	92	94	87	91	
UNITS	(mg/kg)	(mg/kg)	(mg/kg)	(mg/kg)	(mg/kg)	(mg/kg)	(mg/kg)
Atoclor-1016	U	U	U	U	U	U	0.033
Atoclor-1221	U	U	U	U	U	U	0.067
Atoclor-1232	U	U	U	U	U	U	0.033
Atoclor-1242	0.900	U	U	U	U	U	0.033
Atoclor-1248	U	0.110	0.100	0.036	U	U	0.033
Atoclor-1254	0.130	U	0.240	0.060	U	U	0.033
Atoclor-1260	U	U	U	U	U	U	0.033
TOTAL PCBs	1.030	0.110	0.340	0.096	0	0	

Qualifiers:
 U: Compound analyzed for but not detected.
 P: Concentration estimated, possibly biased low since primary and confirmation column concentrations had a percent difference >25%; lower value reported.

Notes:
 : Value for Total PCBs exceeds 10 parts per million (ppm).