

9/10/02

**TOWN OF OYSTER BAY
BETHPAGE COMMUNITY PARK
SUMMARY OF INVESTIGATION PROGRAM**

Extensive investigation of the Bethpage Community Park has been conducted. This has included limited sampling conducted by both the U.S. Navy (Halliburton NUS) in 1994 and the Town of Oyster Bay (Eder Associates) in 1998.

Northrop Grumman Corporation has conducted two investigations, as follows:

Phase I – March 2002

- 60 soil probes advanced to 8 feet below grade with soil samples collected at surface (0 to 2 inches below grade) and at 2-foot intervals.
- Probes spaced on a 100-foot grid.
- 298 soil samples collected from soil probes for laboratory analysis.
- 19 surface (0 to 2 inches below grade) soil samples collected from locations where humans might come into direct contact with soil as a result of disturbing the soil (“Exposure Points”).
- All soil samples analyzed for polychlorinated biphenyls (PCBs) and Resource Conservation and Recovery Act (RCRA) metals.

Phase II – May 2002

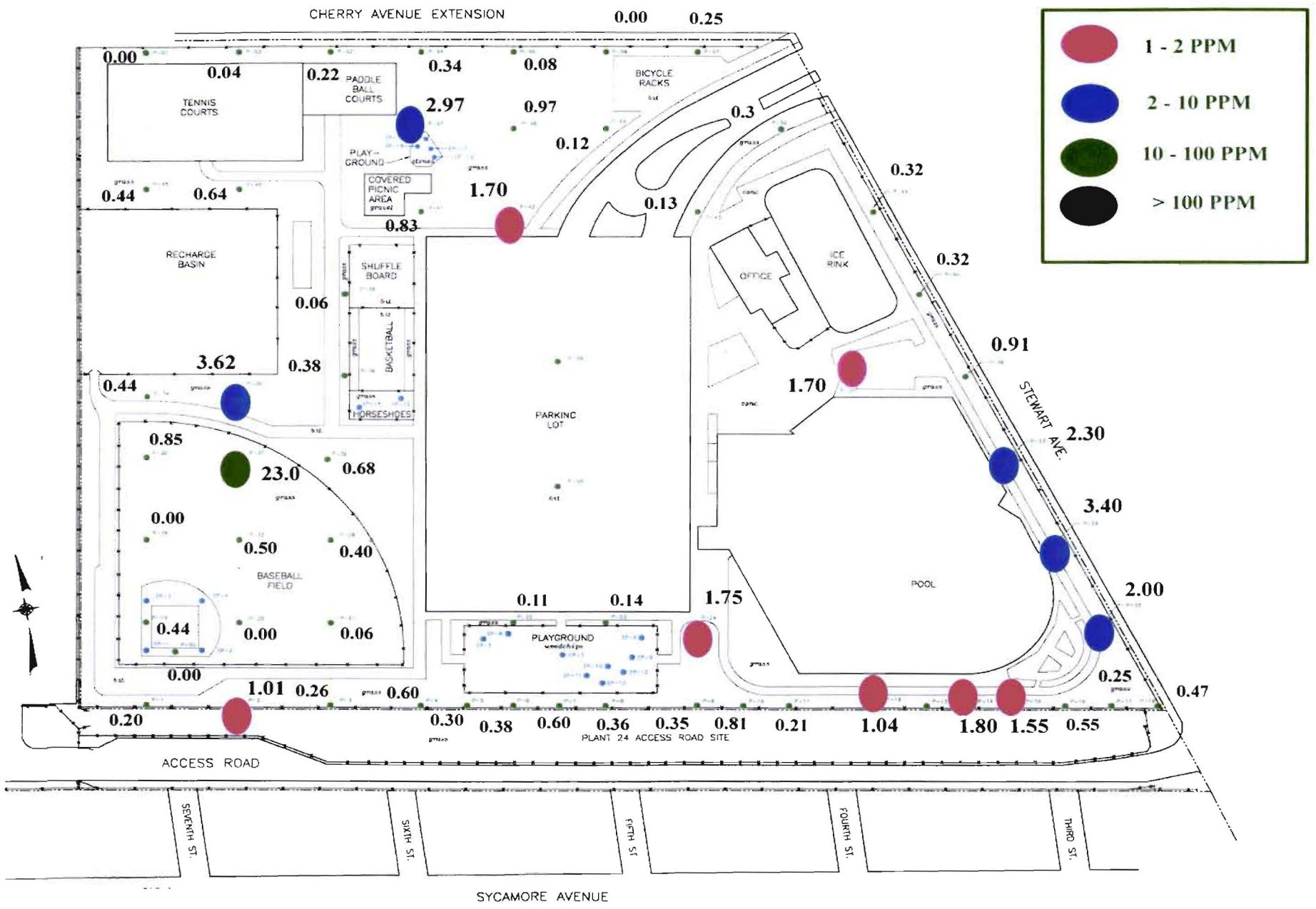
- 8 surface (0 to 2 inches below grade) soil samples collected from various additional Exposure Points for laboratory analysis of PCBs.
- 4 surface (0 to 2 inches below grade) soil samples collected from locations in left/center field of the baseball field for laboratory analysis of PCBs.

Northrop Grumman Corporation believes that delineation at the Bethpage Community Park has been substantially completed. Because, as the New York State Department of Health has noted, there is no significant exposure risk, capping may be an appropriate remedial option. Accordingly, additional delineation activities might conceptually consist of the following:

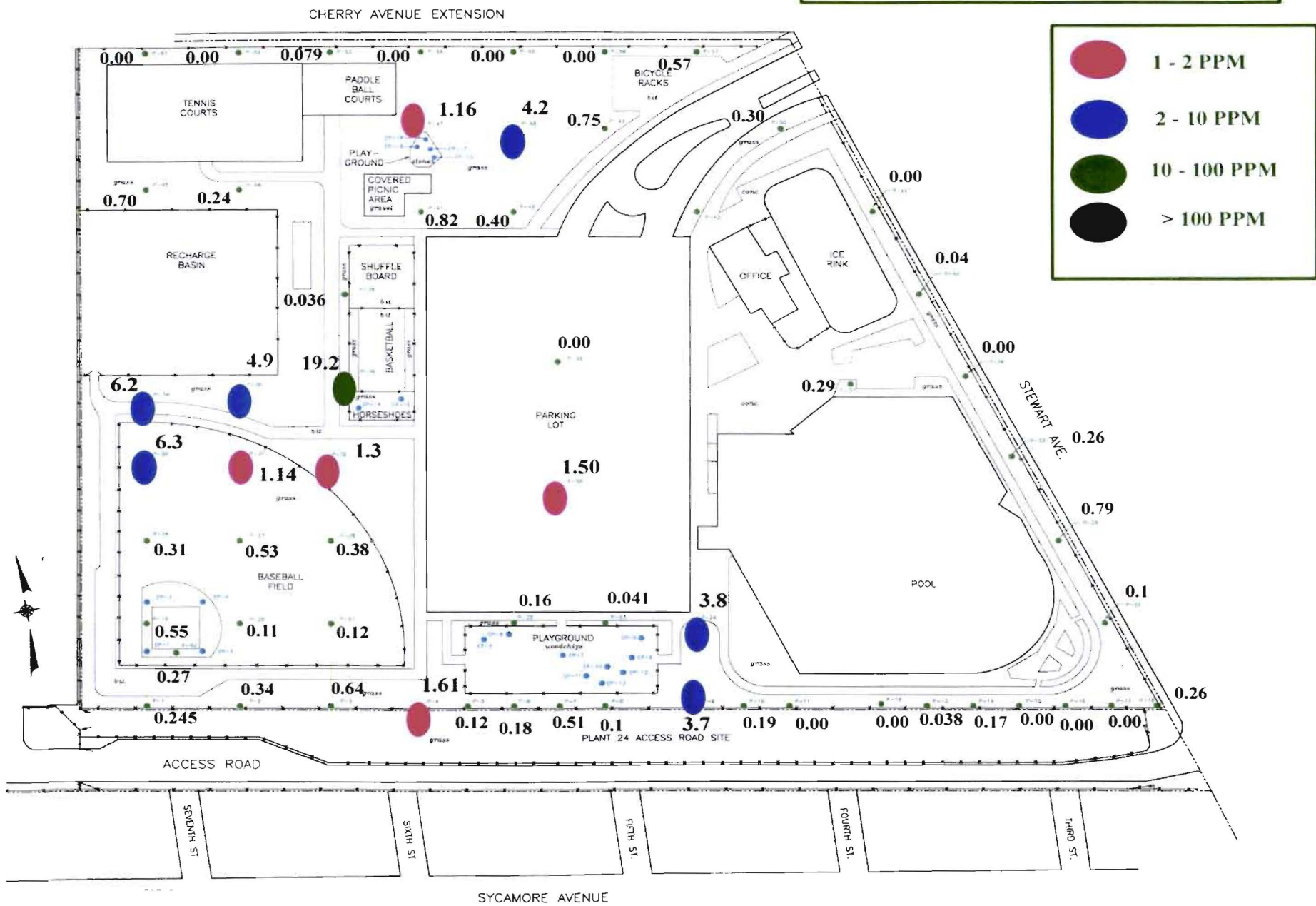
- Advancement of soil borings to determine the vertical extent of contamination.
- Speciation of the chromium detected in the soil samples (i.e., hexavalent chromium versus total chromium).
- Installation of groundwater monitoring wells to determine any groundwater impacts.

Based on this, and in the interest of allowing possible further investigation to proceed while the other parties (U.S. Navy and Town of Oyster Bay) determine their course of action, Northrop Grumman is prepared to offer what it believes is its fair share of the costs of a reasonable additional delineation program to the Department.

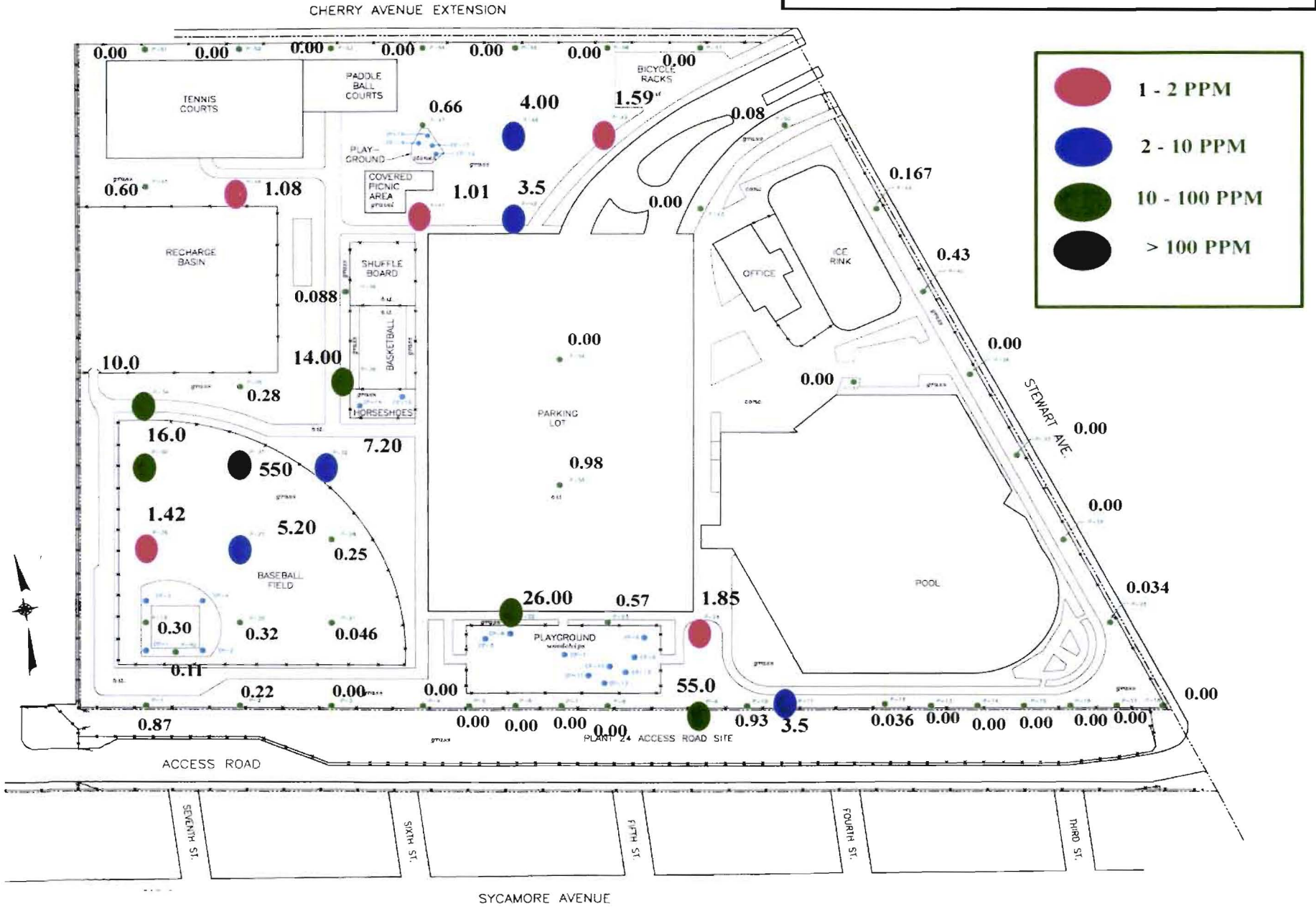
MARCH 2002 PCB LEVELS AT SURFACE (0 - 2 INCH)



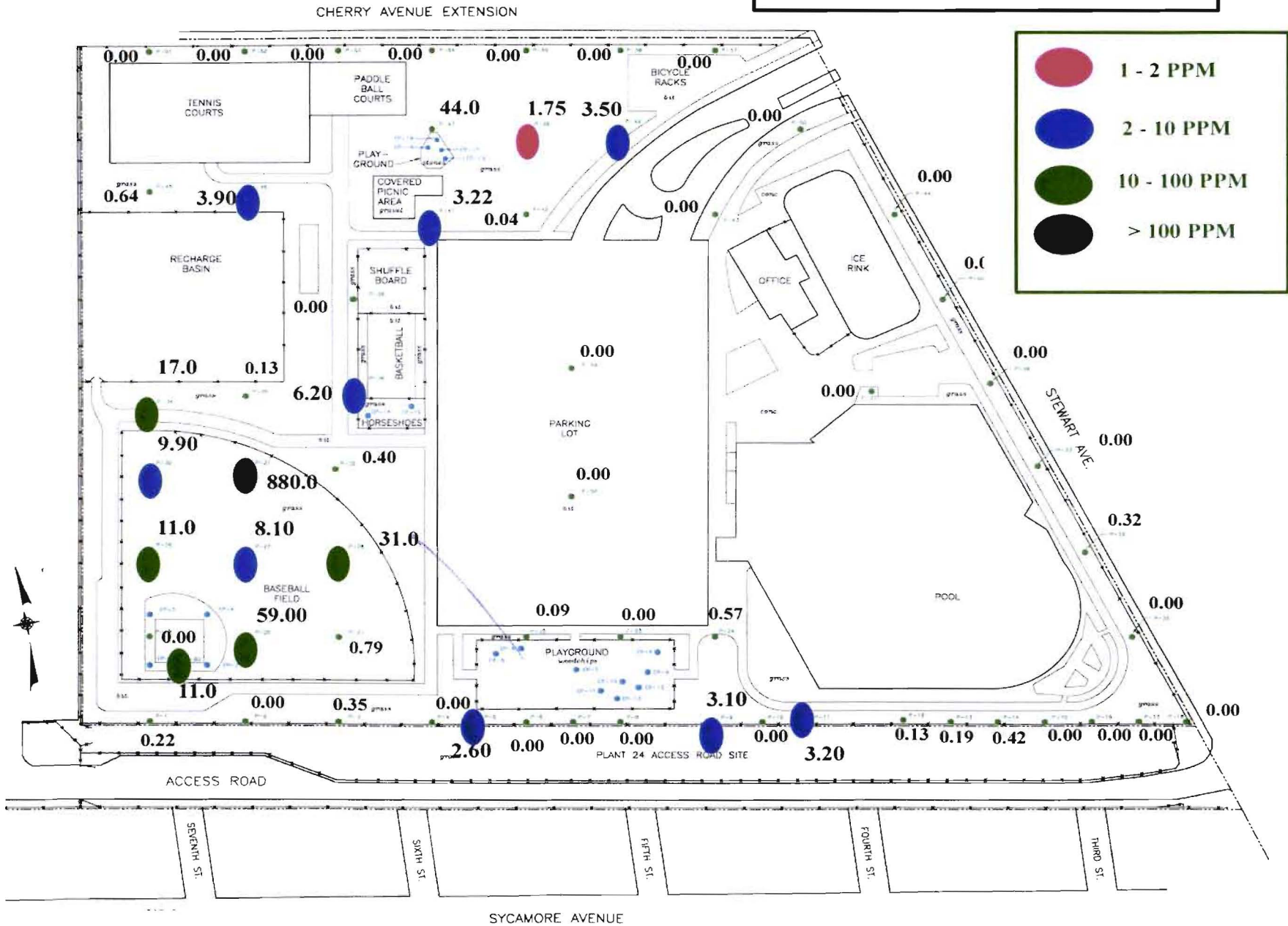
MARCH 2002 PCB LEVELS AT SUBSURFACE (2 INCH - 2 FT)



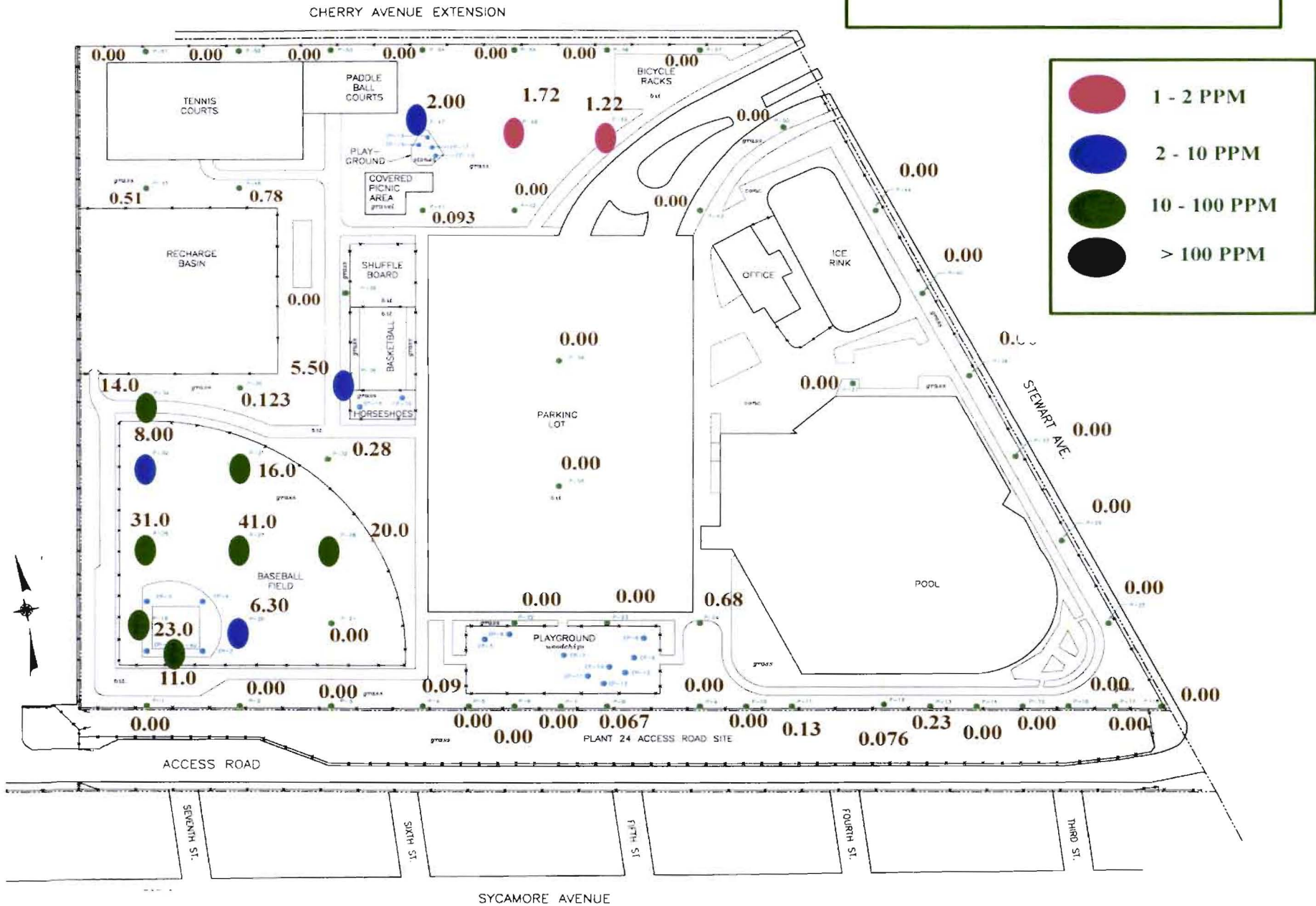
MARCH 2022 PCB LEVELS AT SUBSURFACE (2 FT - 4 FT)



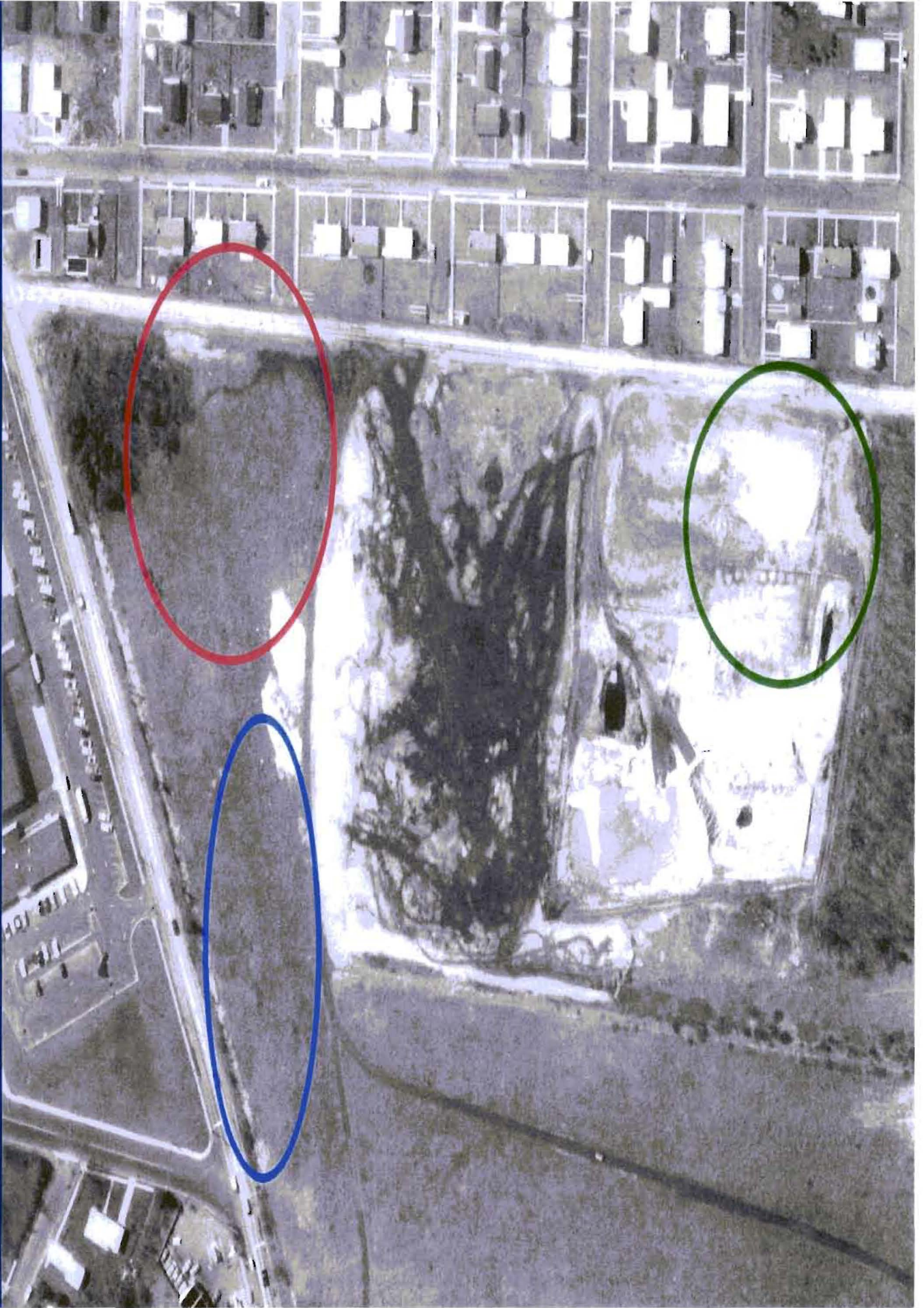
MARCH 2002 PCB LEVELS AT SUBSURFACE (4 FT - 6 FT)



MARCH 2002 PCB LEVELS AT SUBSURFACE (6 FT - 8 FT)



Northrop Grumman Air Photo - April 10, 1962



*



1963

* tree down

