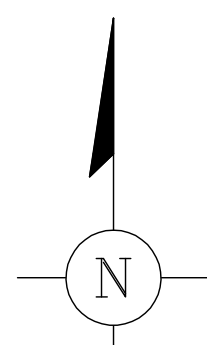
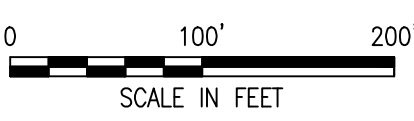
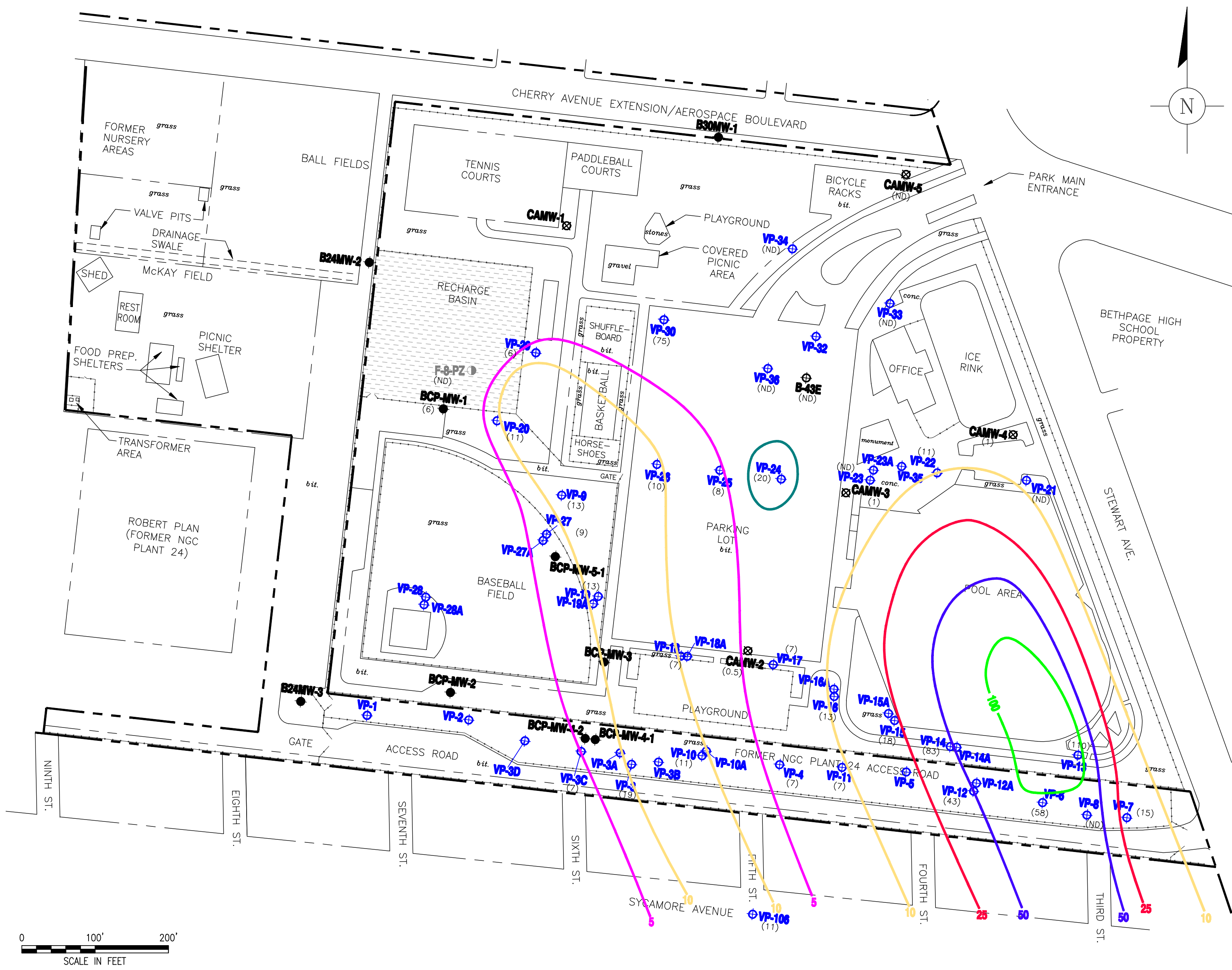


Acad Version : R17.0s (LMS TBoG)\Time : Tue, 13 Feb 2007 7:04pm
 User Name : alsanchez
 Path Name : G:\PROJECT\Northrop Grumman\DCadd\OU3\2007\CONTOURS\CHLORFORM_Conc_GW.dwg
 Current Plotstyle : ByColor
 Layout Tab: CHLORFORM



- EXPLANATION**
- NORTHROP GRUMMAN CORPORATION PROPERTY LINE
 - - - - - FENCE
 - - - - - LIMITS OF BETHPAGE HIGH SCHOOL MAIN BUILDING
 - [Hatched Box] BASIN
 - bit.* BITUMINOUS PAVEMENT
 - BCP-MW-3 EXISTING MONITORING WELL
 - ⊕ VP-1 COMPLETED VERTICAL PROFILE BORING (BY ARCADIS)
 - ⊙ F-8-PZ-1 COMPLETED PIEZOMETER (BY ARCADIS)
 - ⊗ CAMW-4 ABANDONED WELL
 - (18) SAMPLE CONCENTRATION
 - (ND) NOT DETECTED
 - VP AND B-43E VERTICAL PROFILE BORINGS

- NOTES:**
- VPBs VP-1 TO VP-20 SURVEYED TO NAD 27. VPBs VP-21 TO VP-36 ARE APPROXIMATE. LAND SURFACE ELEVATIONS APPROXIMATED FOR VP-25, VP-26, VP-27 AND VP-29 USING VALUE FROM NEREST SURVEYED VPB.

- DEFINITION OF ISOCONCENTRATION CONTOURS**
- 5 5 ug/L
 - 10 10 ug/L
 - 20 20 ug/L
 - 25 25 ug/L
 - 50 50 ug/L
 - 100 100 ug/L

PRELIMINARY DRAFT

© 2007 ARCADIS OF NEW YORK, INC.		SEAL	<p>Two Huntington Quadrangle Suite 1S10 Melville, NY 11747 Tel: 631-249-7600 Fax: 631-249-7610 www.arcadis-us.com</p>	PROJECT TITLE OPERABLE UNIT 3 FORMER GRUMMAN SETTLING PONDS BETHPAGE, NEW YORK	PROJECT MANAGER C. SAN GIOVANNI	DEPARTMENT MANAGER M. WOLFERT	LEAD DESIGN PROF.	CHECKED BY D. STERN		
						SHEET TITLE SITE PLAN SHOWING CHLORFORM IN GROUNDWATER			TASK/PAGE NUMBER 00004	DRAWN BY A. SANCHEZ
									PROJECT NUMBER NY001348.0807	DRAWING NUMBER
	NO. ISSUED DATE 0 02-13-07	REVISION DESCRIPTION DRAFT		BY/CKD MR						