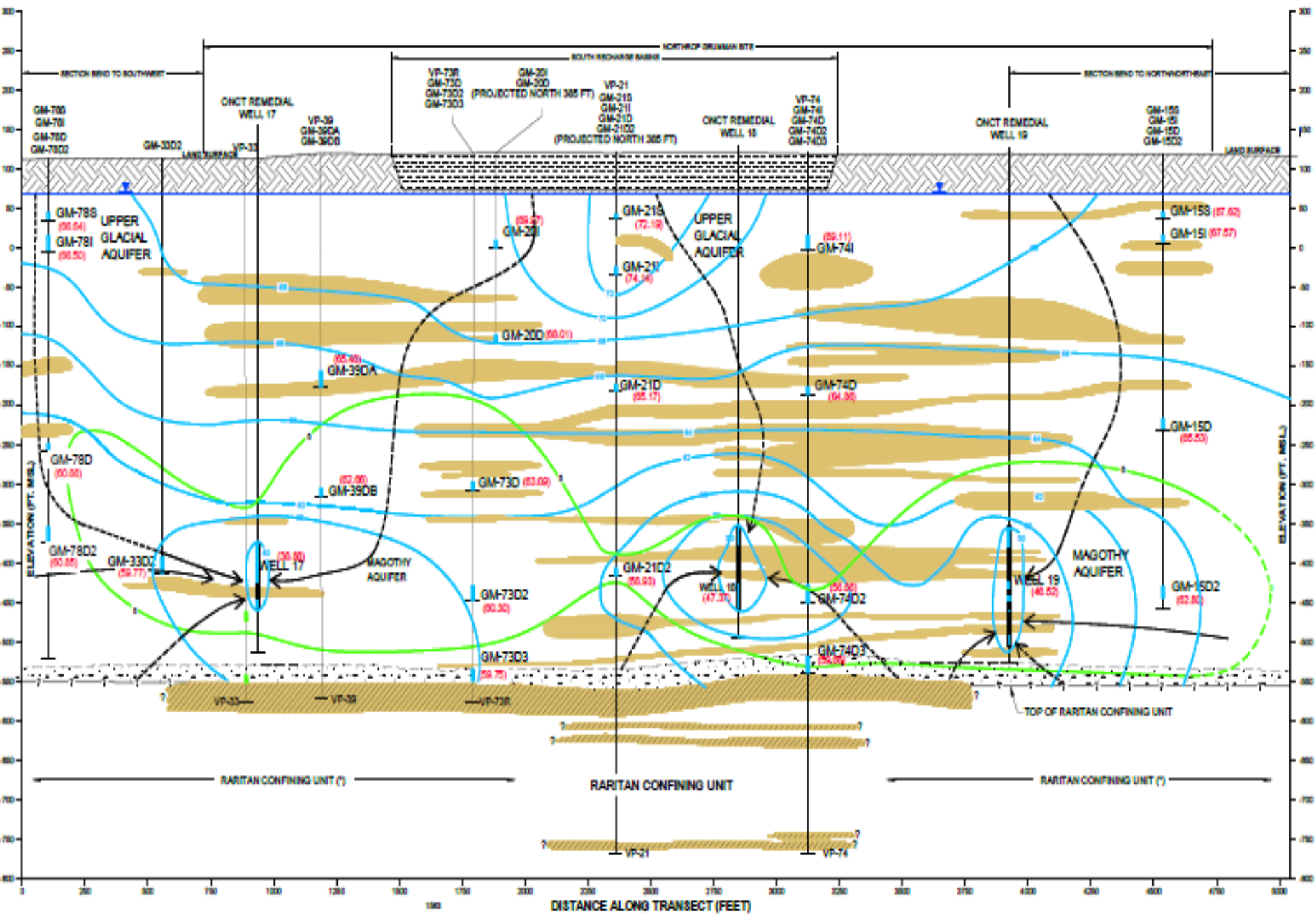
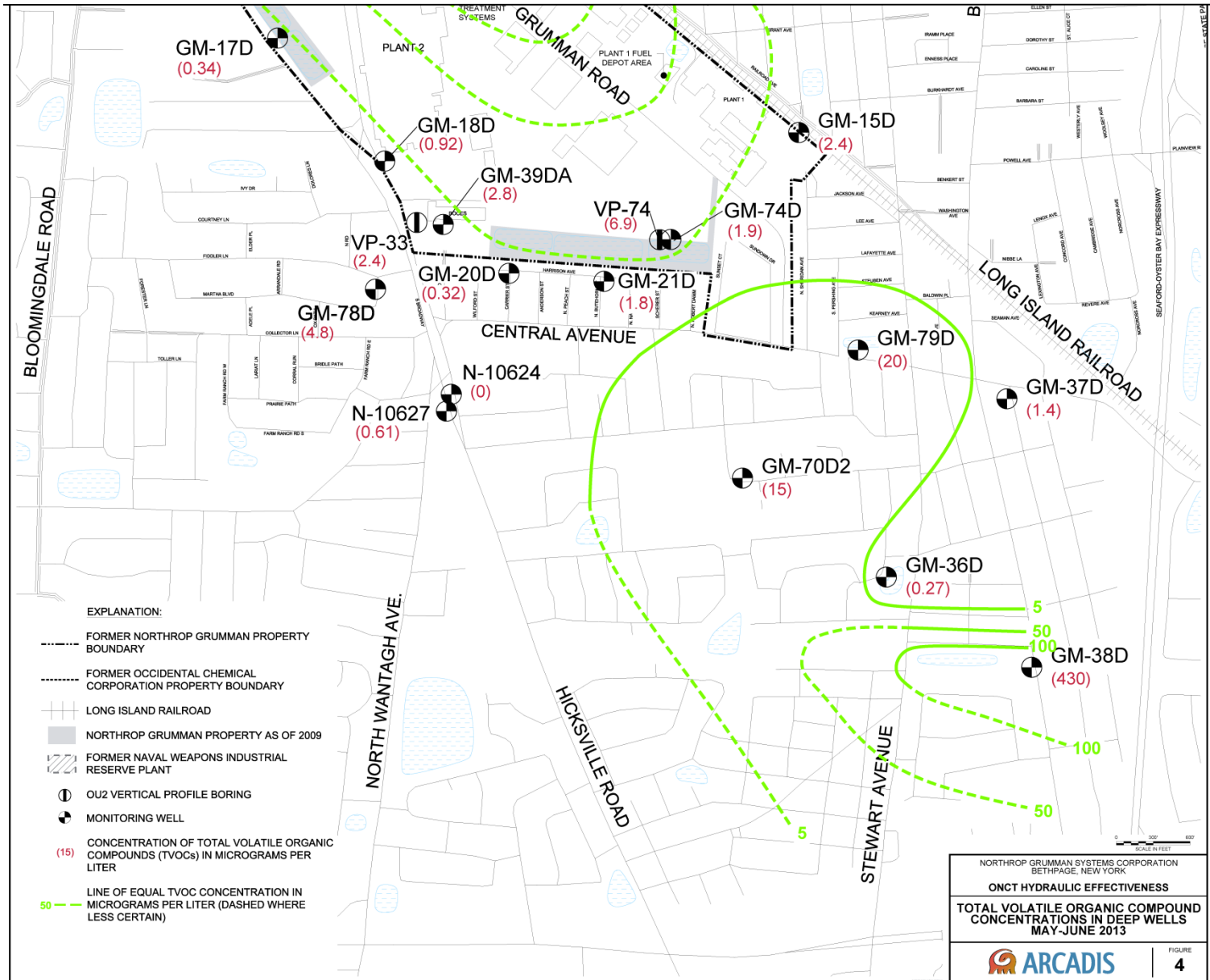


OU2 Off-Site Hot Spot (VP-142/Well BWD 6-2)

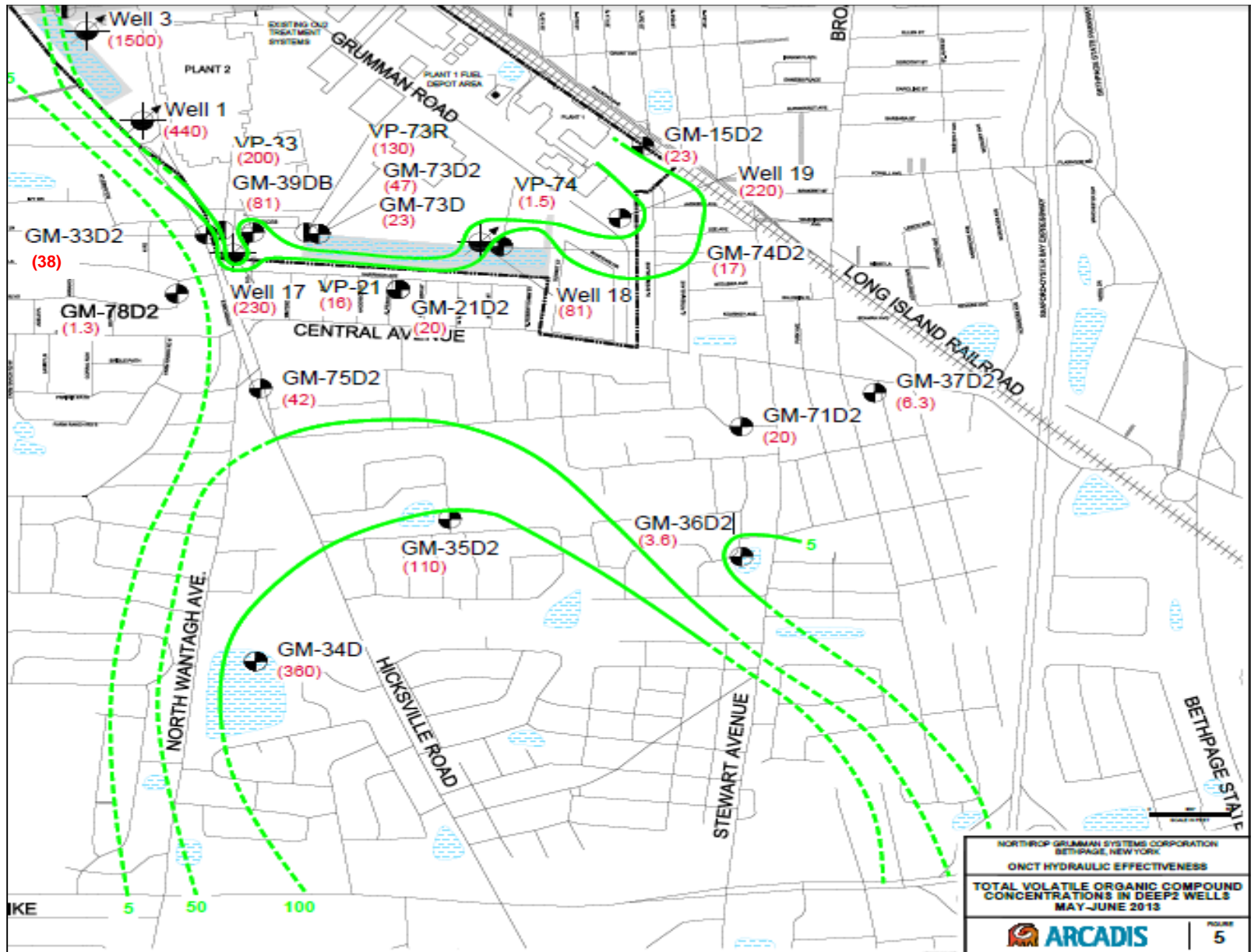
- Key Conclusions for ONCT System:
 - Preventing off-site VOC migration since startup (Nov-1998)
 - Hydraulic containment is being achieved
- Groundwater Quality (VOCs):
 - Elevated VOC-impacts migrated off-site prior to 1994 and startup of ONCT System
 - Historical trends for GM-33D2 and GM-75D2



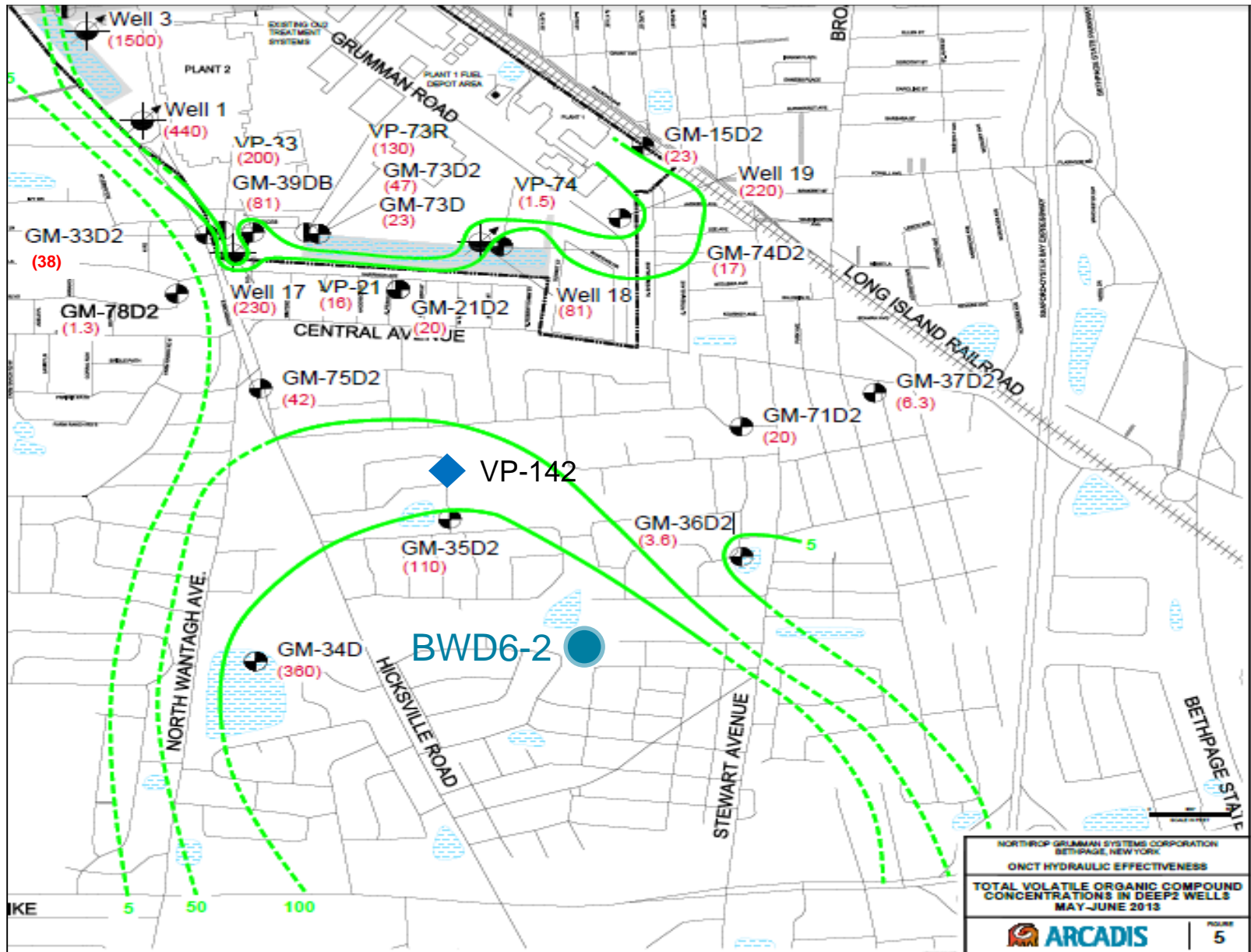


Imagine the result

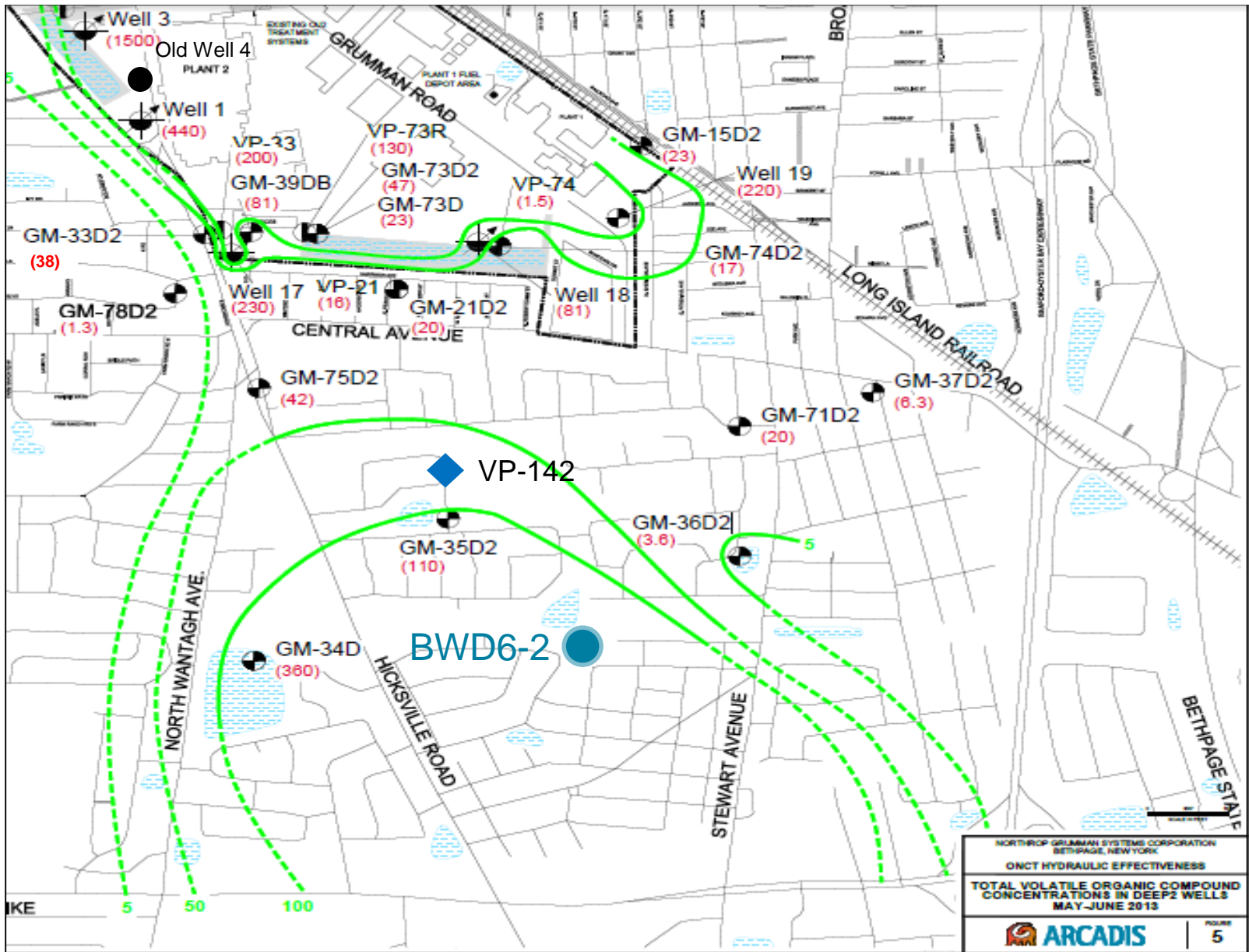




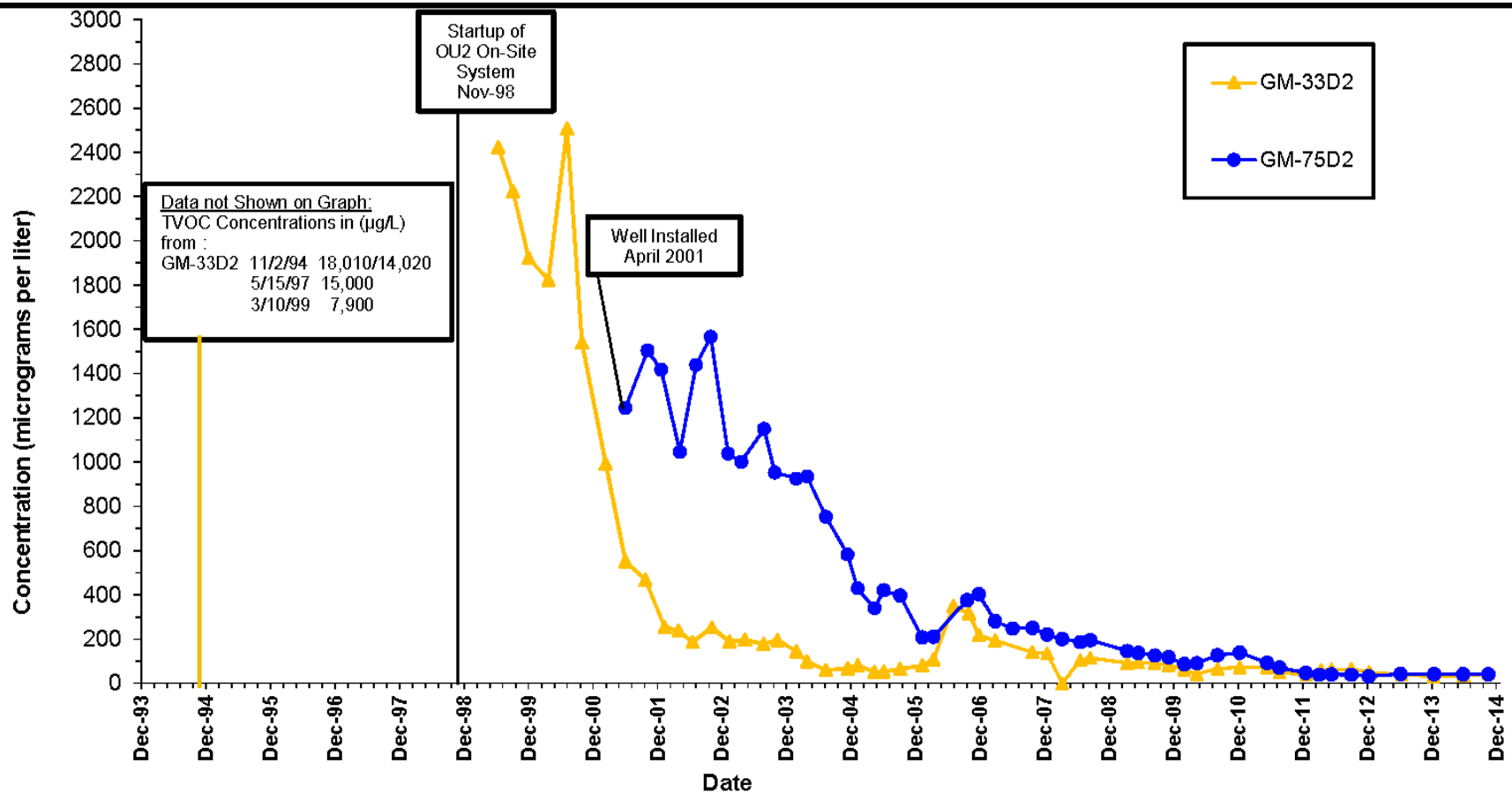
Imagine the result



Imagine the result



Imagine the result



Abbreviations:
 VOC= Volatile Organic Compound
 Total VOCs = Sum of VOCs detected
 µg/L = micrograms per liter

Historical Well Data not Shown on Graph (TVOCs ug/L):

- Well 4: (1974-79) 25,000 (max)
- Well 1: (1980-89) 14,300 (max)
- Well 17 (1998) : 7,200

NORTHROP GRUMMAN SYSTEMS CORPORATION
 BETHPAGE, NEW YORK
OPERABLE UNIT 2

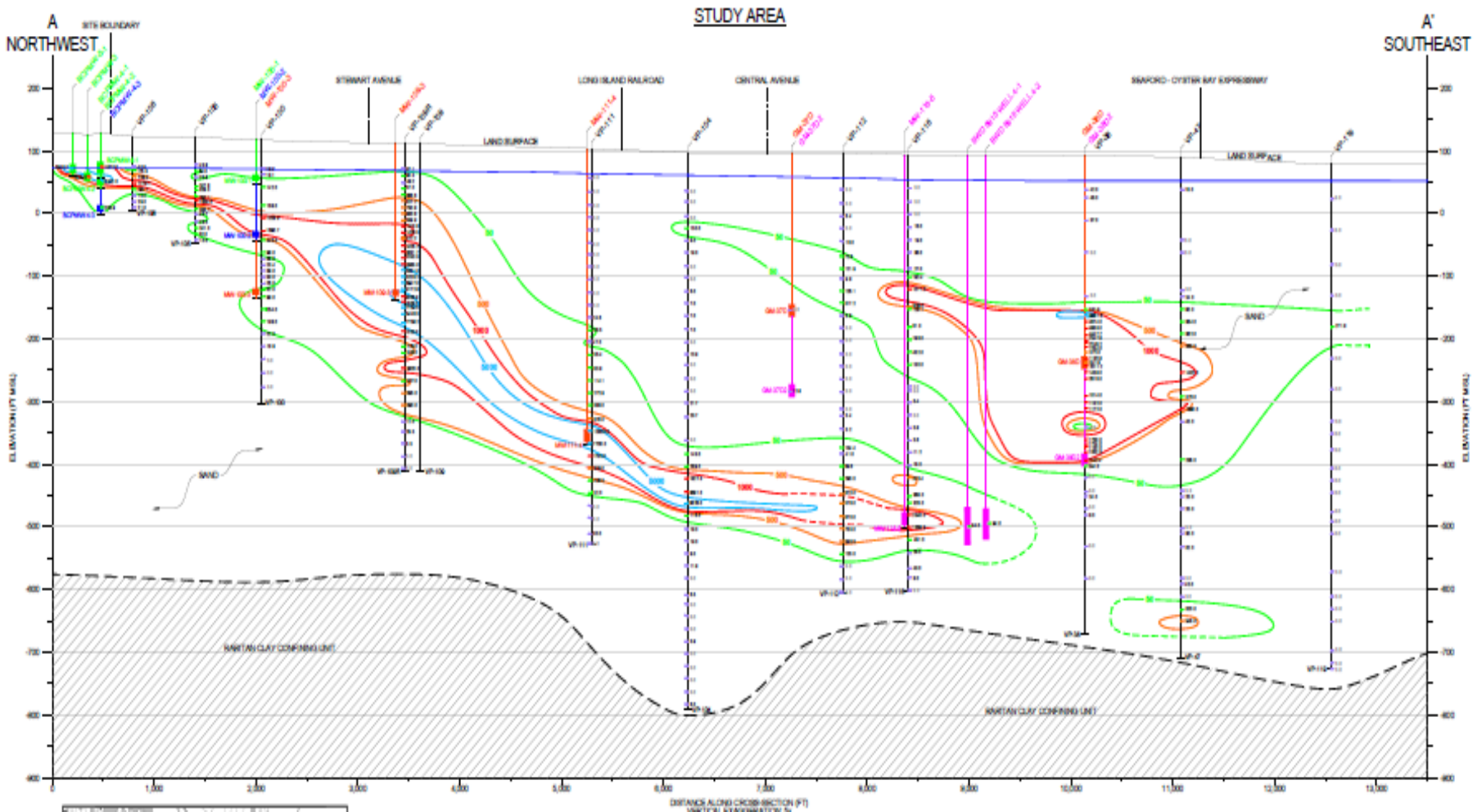
Total Volatile Organic Compound Concentrations in Monitoring Wells (GM-33D2 and GM-75D2)



OU3

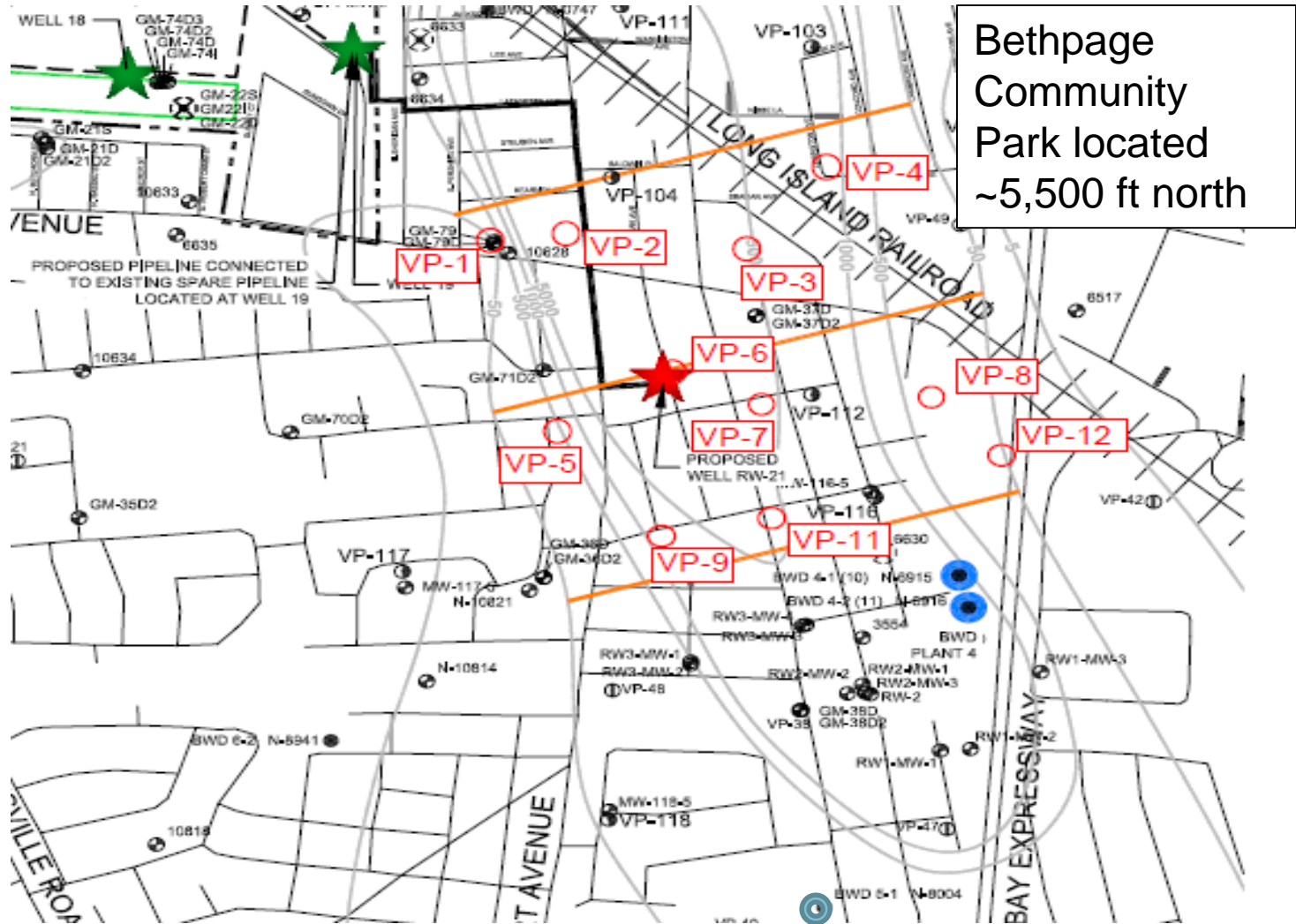
Pre-Design Investigation for Groundwater Hotspot

Study Area RI X-Section



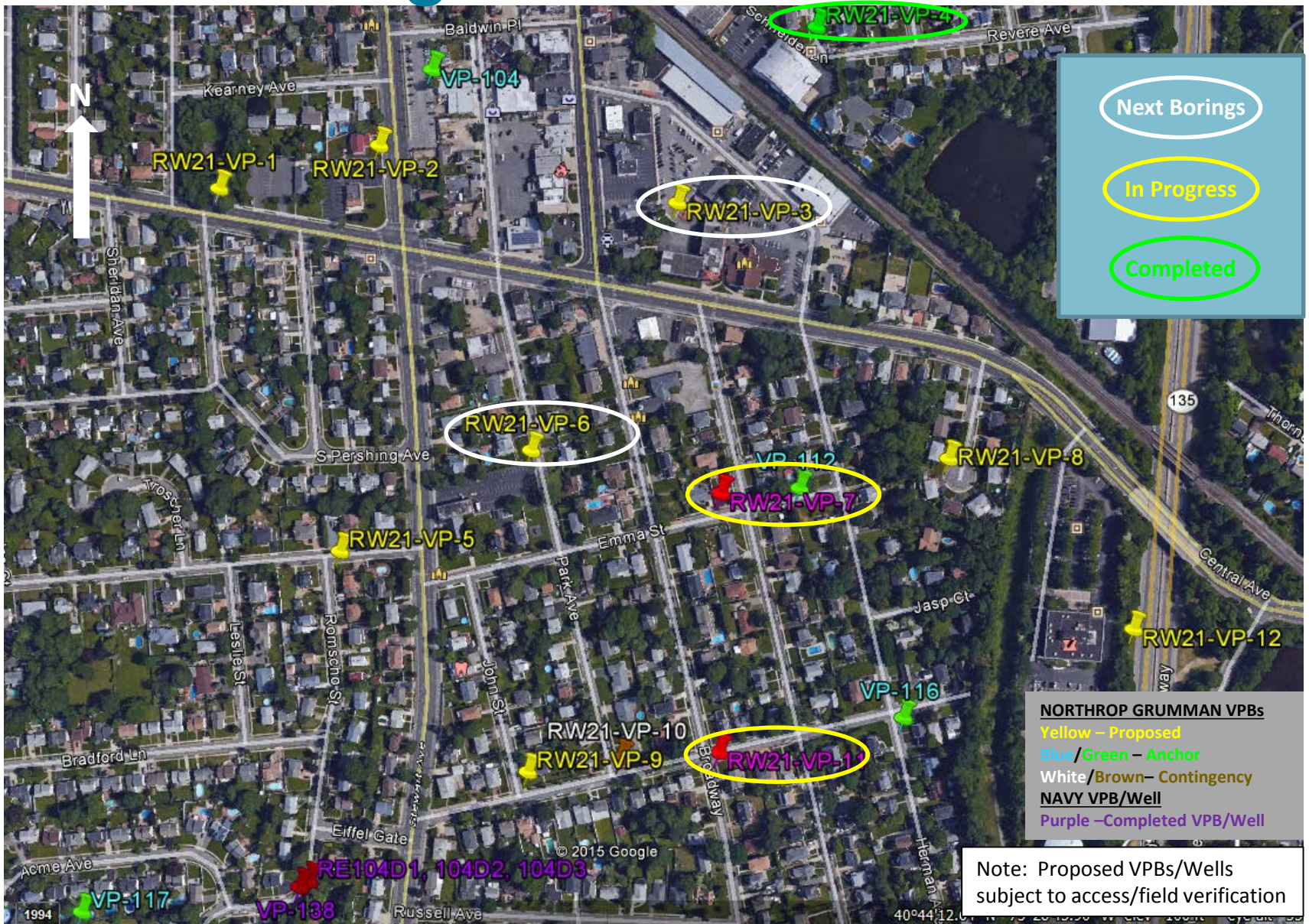
Imagine the result

VPB Locations



Imagine the result

Drilling Status 2/24/15



Note: Proposed VPBs/Wells subject to access/field verification

Off-Site Drilling Setup



Imagine the result