



Mr. Steven Scharf, P.E.
New York State Department of Environmental Conservation (NYSDEC)
Division of Environmental Remediation
625 Broadway
Albany, New York 12233-7015

Subject:

Results of First Quarter 2015 System Operation and Monitoring,
Operable Unit 3 (Former Grumman Settling Ponds) Bethpage Park Soil Gas
Containment System, Bethpage, New York
NYSDEC ID# 1-30-003A

Dear Mr. Scharf:

On behalf of Northrop Grumman Systems Corporation (Northrop Grumman),
ARCADIS is providing the NYSDEC with the results of Operable Unit 3 Bethpage
Park Soil Gas Containment System (OU3 BPSGCS) operation and monitoring,
performed in accordance with the NYSDEC-approved OU3 Soil Gas IRM OM&M
Manual (ARCADIS 2009) and the NYSDEC-approved Sampling and Analysis Plan
(SAP; ARCADIS 2008).

Figure 1 shows the site plan with depressurization and vacuum monitoring well
induced vacuum measurements. Tables 1 and 2 summarize OU3 BPSGCS remedial
system performance operational data. Tables 3 and 4 provide the validated analytical
results of monitoring for this period. Tables 5 and 6 summarize the SCREEN3 model
and the maximum allowable stack concentration calculations.

Please contact us if you have any questions or comments.

Sincerely,

ARCADIS of New York, Inc.

Christopher Engler, P.E.
Engineer of Record

ARCADIS of New York, Inc.
Two Huntington Quadrangle
Suite 1S10
Melville
New York 11747
Tel 631 249 7600
Fax 631 249 7610
www.arcadis-us.com

ENVIRONMENT

Date:

May 12, 2015

Contact:

Christopher Engler

Phone:

315.409.6579

Email:

Christopher.Engler@arcadis-us.com

Our ref:

NY001496.1214.OMMI4

Imagine the result

Copies:

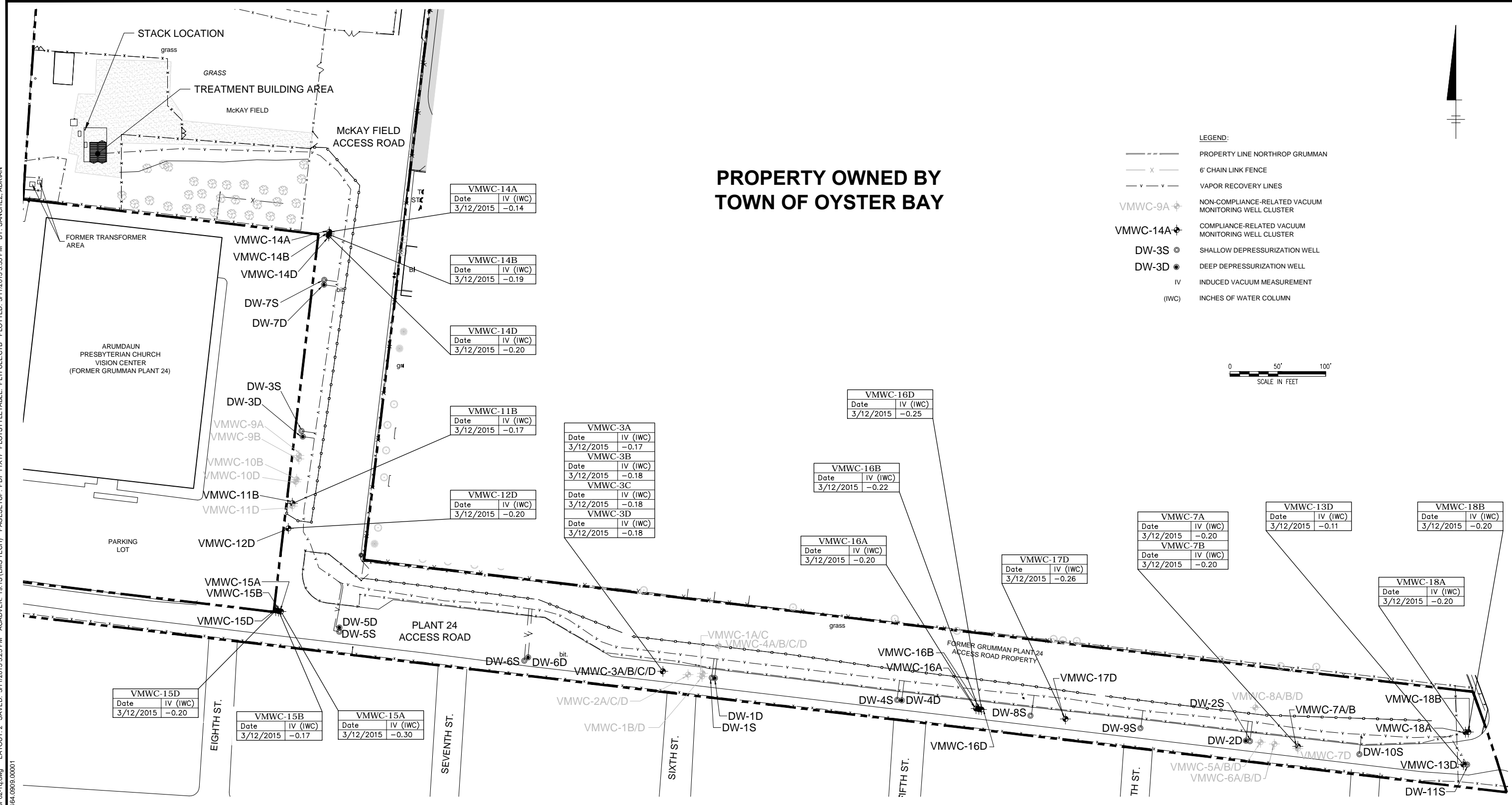
Steven Karpinski – New York State Department of Health
Joseph DeFranco – Nassau County Department of Health
Robert Alvey – USEPA Region 2
Carol Stein – USEPA Region 2
Fred Weber – Northrop Grumman Corporation
Edward Hannon – Northrop Grumman Corporation
Repository
File



Figures

CITY: MELVILLE, NY DIV: GROUP: ENV/ENR CAD DB: ALS LD: PIC: P/MCSG TM: LVR/ON=OFF=REF*
 G:\ENV\CAD\SYRACUSE\SELECT\NY0014961214\NY14961021.dwg LAYOUT: 2. SAVED: 5/11/2015 3:25 PM
 ACADVER: 19.15 (LMS TECH) PAGES: 19 OF 111 PLOT: PLOTSTYLETABLE: PLT\FULL.CTB PLOTTED: 5/11/2015 3:55 PM BY: SANCHEZ, ADRIAN
 XREFS: IMAGES: PROJECTNAME: NY001464.0909.00001
 Xref: IR/MSYSTEMS
 Xref: 1496101

PROPERTY OWNED BY TOWN OF OYSTER BAY



VMWC-15D	
Date	IV (IWC)
3/12/2015	-0.20

VMWC-15B	
Date	IV (IWC)
3/12/2015	-0.17

VMWC-15A	
Date	IV (IWC)
3/12/2015	-0.30

VMWC-14A	
Date	IV (IWC)
3/12/2015	-0.14

VMWC-14B	
Date	IV (IWC)
3/12/2015	-0.19

VMWC-14D	
Date	IV (IWC)
3/12/2015	-0.20

VMWC-11B	
Date	IV (IWC)
3/12/2015	-0.17

VMWC-12D	
Date	IV (IWC)
3/12/2015	-0.20

VMWC-3A	
Date	IV (IWC)
3/12/2015	-0.17

VMWC-3B	
Date	IV (IWC)
3/12/2015	-0.18

VMWC-3C	
Date	IV (IWC)
3/12/2015	-0.18

VMWC-3D	
Date	IV (IWC)
3/12/2015	-0.18

VMWC-16D	
Date	IV (IWC)
3/12/2015	-0.25

VMWC-16B	
Date	IV (IWC)
3/12/2015	-0.22

VMWC-16A	
Date	IV (IWC)
3/12/2015	-0.20

VMWC-17D	
Date	IV (IWC)
3/12/2015	-0.26

VMWC-7A	
Date	IV (IWC)
3/12/2015	-0.20

VMWC-7B	
Date	IV (IWC)
3/12/2015	-0.20

VMWC-13D	
Date	IV (IWC)
3/12/2015	-0.11

VMWC-18B	
Date	IV (IWC)
3/12/2015	-0.20

VMWC-18A	
Date	IV (IWC)
3/12/2015	-0.20

NORTHROP GRUMMAN SYSTEMS CORPORATION
 BETHPAGE, NEW YORK
OPERABLE UNIT 3
FORMER GRUMMAN SETTLING PONDS
GENERAL SITE PLAN AND MONITORING
WELL VACUUM MEASUREMENTS
BETHPAGE PARK SOIL GAS CONTAINMENT
SYSTEM, FIRST QUARTER 2015





Tables

Table 1. Summary of General System Operating Parameters, First Quarter 2015, Northrop Grumman Operable Unit 3, Bethpage Park Soil Gas Containment System, Former Grumman Settling Ponds, Bethpage, New York.

	DW-7S Parameters			DW-7D Parameters			DW-3S Parameters			DW-3D Parameters			DW-5S Parameters			DW-5D Parameters			DW-6S Parameters			DW-6D Parameters		
	Flow Rate at Manifold	Vacuum at Manifold	Wellhead Vacuum	Flow Rate at Manifold	Vacuum at Manifold	Wellhead Vacuum	Flow Rate at Manifold	Vacuum at Manifold	Wellhead Vacuum	Flow Rate at Manifold	Vacuum at Manifold	Wellhead Vacuum	Flow Rate at Manifold	Vacuum at Manifold	Wellhead Vacuum	Flow Rate at Manifold	Vacuum at Manifold	Wellhead Vacuum	Flow Rate at Manifold	Vacuum at Manifold	Wellhead Vacuum	Flow Rate at Manifold	Vacuum at Manifold	Wellhead Vacuum
Date	scfm	iwc	iwc	scfm	iwc	iwc	scfm	iwc	iwc	scfm	iwc	iwc	scfm	iwc	iwc	scfm	iwc	iwc	scfm	iwc	iwc	scfm	iwc	iwc
06/20/14	110	-18	-1.6	12	-12	-0.52	7.0	-4.8	-0.23	17	-8.2	-0.48	103	-16	-1.5	13	-14	-2.3	85	-15	-1.4	8.3	-6.2	-1.5
09/10/14	97	-20	-1.7	6.8	-8.2	-0.42	7.0	-5.2	-0.20	11	-7.0	-0.30	84	-15	-1.4	15	-8.5	-2.0	82	-17	-1.6	5.9	-5.4	-1.1
12/10/14	94	-21	-1.7	6.0	-8.0	-0.50	7.0	-5.6	-0.26	9.0	-7.0	-0.38	83	-16	-1.4	13	-9.0	-2.1	79	-18	-1.6	6.4	-5.4	-1.2
03/12/15	88	-18	-2.0	4.5	-7.0	-0.44	6.0	-8.6	-0.33	10	-7.0	-0.44	83	-17	-1.7	14	-12	-2.6	74	-16	-1.9	7.2	-6.2	-1.7

Notes and Abbreviations

- °F degrees Fahrenheit
- DW depressurization well
- gal gallons
- Hz Hertz
- iwc inches of water column
- not applicable
- PID photoionization detector
- ppmv parts per million by volume
- scfm standard cubic feet per minute

- 1 Total gallons of water accumulated at storage tank ST-510 per quarter.
- 2 Total effluent air velocity in feet per minute was measured using a hand-held anemometer at the stack effluent location. The total effluent flow rate in scfm was calculated by multiplying the measured air velocity by the pipe area, the ratio of the standard air temperature to the measured air temperature, and the ratio of the measured air pressure to the standard air pressure.
- 3 Value was remeasured on June 30, 2014 due to an erroneous value recorded on June 20, 2014 as a result of a faulty pressure gauge.
- 4 Value was remeasured on March 13, 2015 due to an erroneous value recorded on March 12, 2015.

Table 1. Summary of General System Operating Parameters, First Quarter 2015, Northrop Grumman Operable Unit 3, Bethpage Park Soil Gas Containment System, Former Grumman Settling Ponds, Bethpage, New York.

	DW-1S Parameters			DW-1D Parameters			DW-4S Parameters			DW-4D Parameters			DW-8S Parameters			DW-9S Parameters			DW-2S Parameters			DW-2D Parameters		
	Flow Rate at Manifold	Vacuum at Manifold	Wellhead Vacuum	Flow Rate at Manifold	Vacuum at Manifold	Wellhead Vacuum	Flow Rate at Manifold	Vacuum at Manifold	Wellhead Vacuum	Flow Rate at Manifold	Vacuum at Manifold	Wellhead Vacuum	Flow Rate at Manifold	Vacuum at Manifold	Wellhead Vacuum	Flow Rate at Manifold	Vacuum at Manifold	Wellhead Vacuum	Flow Rate at Manifold	Vacuum at Manifold	Wellhead Vacuum	Flow Rate at Manifold	Vacuum at Manifold	Wellhead Vacuum
Date	scfm	iwc	iwc	scfm	iwc	iwc	scfm	iwc	iwc	scfm	iwc	iwc	scfm	iwc	iwc	scfm	iwc	iwc	scfm	iwc	iwc	scfm	iwc	iwc
06/20/14	75	-18	-1.4	8.3	-4.7	-2.0	85	-14	-1.6	5.5	-11	-0.73	68	-17	-1.7	37	-14	-1.2	27	-18	-1.3	32	-21	-2.0
09/10/14	72	-19	-1.5	4.7	-2.8	-1.2	62	-14	-1.2	5.5	-5.6	-0.51	60	-18	-1.8	28	-13	-1.1	28	-22	-1.5	29	-19	-2.0
12/10/14	75	-20	-2.4	4.7	-3.0	-1.3	75	-16	-1.5	7.0	-5.9	-0.60	65	-23	-2.3	32	-14	-1.5	30	-28	-1.8	34	-22	-2.1
03/12/15	80	-22	-2.1	2.9	-3.0	-1.2	68	-15	-1.2	4.0	-5.8	-0.55	60	-20	-2.3	48	-16	-1.9	32	-28	-1.7	22	-15	-1.3

Notes and Abbreviations

- °F degrees Fahrenheit
- DW depressurization well
- gal gallons
- Hz Hertz
- iwc inches of water column
- not applicable
- PID photoionization detector
- ppmv parts per million by volume
- scfm standard cubic feet per minute

- 1 Total gallons of water accumulated at storage tank ST-510 per quarter.
- 2 Total effluent air velocity in feet per minute was measured using a hand-held anemometer at the stack effluent location. The total effluent flow rate in scfm was calculated by multiplying the measured air velocity by the pipe area, the ratio of the standard air temperature to the measured air temperature, and the ratio of the measured air pressure to the standard air pressure.
- 3 Value was remeasured on June 30, 2014 due to an erroneous value recorded on June 20, 2014 as a result of a faulty pressure gauge.
- 4 Value was remeasured on March 13, 2015 due to an erroneous value recorded on March 12, 2015.

Table 1. Summary of General System Operating Parameters, First Quarter 2015, Northrop Grumman Operable Unit 3, Bethpage Park Soil Gas Containment System, Former Grumman Settling Ponds, Bethpage, New York.

	DW-10S Parameters			DW-11S Parameters			Knock Out Tank Parameters - Vacuum			Condensate Water Collected ⁽¹⁾	Blower Parameters BL-200			Blower Parameters BL-300			Blower Parameters BL-400			Combined Effluent Parameters				
	Flow Rate at Manifold	Vacuum at Manifold	Wellhead Vacuum	Flow Rate at Manifold	Vacuum at Manifold	Wellhead Vacuum	Influent KO-200	Influent KO-300	Influent KO-400	Influent ST-510	Influent Vacuum	Effluent Pressure	Blower Speed	Influent Vacuum	Effluent Pressure	Blower Speed	Influent Vacuum	Effluent Pressure	Blower Speed	Total Effluent Flow Rate ⁽²⁾	Total Effluent PID	Heat Exchanger Influent Temp.	Total Effluent Pressure	Heat Exchanger Effluent Temp.
Date	scfm	iwc	iwc	scfm	iwc	iwc	iwc	iwc	iwc	Gallons	iwc	iwc	Hz	iwc	iwc	Hz	iwc	iwc	Hz	scfm	ppmv	°F	iwc	°F
06/20/14	35	-13	-2.0	29	-18	-2.1	-27	--	--	0	-31	2.6 ⁽³⁾	59.48	--	--	--	--	--	--	734	0.0	110	2.5	104
09/10/14	27	-13	-1.5	31	-22	-2.2	--	-26	--	0	--	--	--	-29	3.8	60.00	--	--	--	683	0.0	110	3.0	96
12/10/14	25	-13	-1.6	27	-25	-2.2	--	-36	--	--	--	--	--	-35	2.0	60.00	--	--	--	650	0.2	98	2.0	74
03/12/15	37	-17	-2.3	34	-27	-2.5	--	--	-38	100	--	--	--	--	--	--	-38	1.0	60.00	639 ⁽⁴⁾	0.0	100	2.0	75

Notes and Abbreviations

- °F degrees Fahrenheit
- DW depressurization well
- gal gallons
- Hz Hertz
- iwc inches of water column
- not applicable
- PID photoionization detector
- ppmv parts per million by volume
- scfm standard cubic feet per minute

- 1 Total gallons of water accumulated at storage tank ST-510 per quarter.
- 2 Total effluent air velocity in feet per minute was measured using a hand-held anemometer at the stack effluent location. The total effluent flow rate in scfm was calculated by multiplying the measured air velocity by the pipe area, the ratio of the standard air temperature to the measured air temperature, and the ratio of the measured air pressure to the standard air pressure.
- 3 Value was remeasured on June 30, 2014 due to an erroneous value recorded on June 20, 2014 as a result of a faulty pressure gauge.
- 4 Value was remeasured on March 13, 2015 due to an erroneous value recorded on March 12, 2015.



Table 2. Summary of Induced Vacuum Readings at Compliance Monitoring Points, First Quarter 2015, Northrop Grumman Operable Unit 3, Bethpage Park Soil Gas Containment System, Former Grumman Settling Ponds, Bethpage, New York. ⁽¹⁾⁽²⁾

Well ID:	DW-7S		DW-7D	DW-3S	DW-3D	DW-5S		DW-5D	DW-1S			DW-1D	DW-4D	DW-8S		DW-2S		DW-2D		DW-11S	
MP ID:	VMWC-14A	VMWC-14B	VMWC-14D	VMWC-11B	VMWC-12D	VMWC-15A	VMWC-15B	VMWC-15D	VMWC-3A	VMWC-3B	VMWC-3C	VMWC-3D	VMWC-16D	VMWC-16A	VMWC-16B	VMWC-7A	VMWC-7B	VMWC-13D	VMWC-17D	VMWC-18A	VMWC-18B
Date	iwc	iwc	iwc	iwc	iwc	iwc	iwc	iwc	iwc	iwc	iwc	iwc	iwc	iwc	iwc	iwc	iwc	iwc	iwc	iwc	iwc
06/20/14	-0.10	-0.18	-0.19	-0.10	-0.14	-0.14	-0.13	-0.16	-0.11	-0.12	-0.12	-0.19	-0.16	-0.15	-0.16	-0.13	-0.11	-0.13	-0.18	-0.093	-0.11
09/10/14	-0.10	-0.16	-0.16	-0.11	-0.11	-0.13	-0.14	-0.15	-0.11	-0.11	-0.11	-0.14	-0.19	-0.14	-0.16	-0.11	-0.11	-0.11	-0.26	-0.096	-0.12
12/10/14	-0.13	-0.20	-0.20	-0.16	-0.17	-0.16	-0.14	-0.16	-0.16	-0.17	-0.18	-0.15	-0.17	-0.21	-0.21	-0.14	-0.13	-0.19	-0.15	-0.16	-0.13
03/12/15	-0.14	-0.19	-0.20	-0.17	-0.20	-0.30	-0.17	-0.20	-0.17	-0.18	-0.18	-0.18	-0.25	-0.20	-0.22	-0.20	-0.20	-0.11	-0.26	-0.20	-0.20
Time Weighted Rolling Average⁽³⁾	-0.12	-0.18	-0.19	-0.13	-0.16	-0.18	-0.14	-0.17	-0.14	-0.15	-0.15	-0.17	-0.19	-0.18	-0.19	-0.15	-0.14	-0.14	-0.21	-0.14	-0.14

Gross Average Compliance Points ⁽⁴⁾	
03/12/15	-0.20

Notes and Abbreviations:

DW depressurization well
 VMWC vapor monitoring well cluster
 iwc inches of water column

- All induced vacuum measurements units in iwc. Values shown have been rounded to two significant figures.
- Compliance goal is -0.1 iwc of vacuum at all compliance monitoring points, based on a twelve-month rolling average.
- Time weighted rolling average calculated by summing the products of the instantaneous induced vacuum readings and the number of days between readings for a 12-month monitoring period, and dividing by the total time period between the first and last quarterly induced vacuum readings.
- Gross average compliance points calculated by summing the induced vacuum values for the noted monitoring event and dividing by the number of readings.

Table 3. Total Effluent Vapor Sample Analytical Results, First Quarter 2015, Northrop Grumman Operable Unit 3, Bethpage Park Soil Gas Containment System, Former Grumman Settling Ponds, Bethpage, New York.⁽¹⁾

Compound (units in µg/m ³)	Sample ID: Sample Date:	VSP-601 6/20/2014	VSP-601 9/10/2014	VSP-601 12/10/2014	VSP-601 3/12/2015
Project VOCs	CAS No.	SGC			
1,1,1-Trichloroethane	71-55-6	9,000	7.3	6.3	15
1,1-Dichloroethane	75-34-3	NS	6.2	5.4	14
1,1-Dichloroethene	75-35-4	380 ⁽⁴⁾	1.4	0.77	1.7
1,2-Dichloroethane	107-06-2	NS	< 0.70 U	< 0.77 U	< 0.81 U
Benzene	71-43-2	1,300	< 0.70 U	2.7	2.7
cis-1,2-Dichloroethene	156-59-2	190,000 ⁽⁵⁾	410 D	190 D	520 D
Tetrachloroethene	127-18-4	300	13	14	15
Toluene	108-88-3	37,000	0.75	< 0.77 U	< 0.75 U
trans-1,2-Dichloroethene	156-60-5	190,000 ⁽⁵⁾	2.5	2.5	3.8
Trichloroethylene	79-01-6	14,000	390 D	320 D	570 D
Vinyl chloride	75-01-4	180,000	0.99	< 0.77 U	1.3
Subtotal Project VOCs			832	542	1,144
Non-Project VOCs					
1,1,1,2-Tetrachloroethane	79-34-5	NS	< 0.70 U	< 0.77 U	< 0.69 U
1,1,2-Trichloroethane	79-00-5	NS	< 0.70 U	< 0.77 U	< 0.55 U
1,2-Dichloropropane	78-87-5	NS	< 0.70 U	< 0.77 U	< 0.92 U
1,3-Butadiene	106-99-0	NS	< 0.70 U	< 0.77 U	< 0.44 U
2-Butanone	78-93-3	13,000	< 7.0 U	< 7.7 U	< 0.59 U
2-Hexanone	591-78-6	4,000	< 0.70 U	0.86	< 0.82 U
4-Methyl-2-Pentanone	108-10-1	31,000	< 0.70 U	< 0.77 U	< 0.82 U
1-Chloro-1,1-difluoroethane (Freon 142b)	75-68-3	NS	260 D	150	120
Acetone	67-64-1	180,000	7.1	15.0	1.7
Bromodichloromethane	75-27-4	NS	< 0.70 U	< 0.77 U	< 0.67 U
Bromoform	75-25-2	NS	< 0.70 U	< 0.77 U	< 0.41 U
Bromomethane	74-83-9	3,900	< 0.70 U	< 0.77 U	< 0.78 U
Carbon Disulfide	75-15-0	6,200	< 7.0 U	< 7.7 U	< 0.62 U
Carbon Tetrachloride	56-23-5	1,900	< 0.70 U	< 0.77 U	0.69
Chlorobenzene	108-90-7	NS	< 0.70 U	< 0.77 U	< 0.92 U
Chlorodibromomethane	124-48-1	NS	< 0.70 U	< 0.77 U	< 0.85 U

Notes and abbreviations on last page.

Table 3. Total Effluent Vapor Sample Analytical Results, First Quarter 2015, Northrop Grumman Operable Unit 3, Bethpage Park Soil Gas Containment System, Former Grumman Settling Ponds, Bethpage, New York.⁽¹⁾

Compound (units in µg/m ³)	Sample ID: Sample Date:	VSP-601 6/20/2014	VSP-601 9/10/2014	VSP-601 12/10/2014	VSP-601 3/12/2015
Non-Project VOCs (cont.)	CAS No.	SGC			
Chloroethane	75-00-3	NS	< 0.70 U	< 0.77 U	< 0.53 U
Chlorodifluoromethane (Freon 22)	75-45-6	NS	1.2	1.1	3.9
Chloroform	67-66-3	150	9.8	7.7	14
Chloromethane	74-87-3	22,000	< 0.70 U	< 0.77 U	< 0.41 U
cis-1,3-Dichloropropene	10061-01-5	NS	< 0.70 U	< 0.77 U	< 0.91 U
Dichlorodifluoromethane (Freon 12)	75-71-8	NS	2.1	2.1	3.1
Ethylbenzene	100-41-4	NS	< 0.70 U	< 0.77 U	< 0.87 U
Trichlorotrifluoroethane (Freon 113)	76-13-1	960,000	< 0.70 U	< 0.77 U	< 0.77 U
Methyl Tert-Butyl Ether	1634-04-4	NS	< 0.70 U	< 0.77 U	< 0.72 U
Methylene Chloride	75-09-2	14,000	< 0.70 U	< 0.77 U	0.76
Styrene	100-42-5	17,000	< 0.70 U	< 0.77 U	< 0.85 U
Trans-1,3-Dichloropropene	10061-02-6	NS	< 0.70 U	< 0.77 U	< 0.91 U
Trichlorofluoromethane (Freon 11)	75-69-4	9,000	1.2	1.6	1.6
Subtotal Non-Project VOCs			281	178	146
TVOC⁽²⁾			1,114	720	1,290

Notes and abbreviations on last page.

Table 3. Total Effluent Vapor Sample Analytical Results, First Quarter 2015, Northrop Grumman Operable Unit 3, Bethpage Park Soil Gas Containment System, Former Grumman Settling Ponds, Bethpage, New York.⁽¹⁾

Notes and Abbreviations:

- Bold** Bold data indicates that the analyte was detected at or above its reporting limit.
 - D** Compound detected at a secondary dilution.
 - ELAP** Environmental Laboratory Approval Program.
 - NS** Guideline concentrations not specified in the NYSDEC DAR-1 AGC/SGC tables, revised February 28, 2014. An interim SGC was not developed for these compounds because they have low toxicity ratings, as specified in the NYSDEC DAR-1 AGC/SGC tables, revised February 28, 2014.
 - CAS No.** Chemical Abstracts Service list number.
 - DAR-1** Division of Air Resources-1 Air Guide-1.
 - NYSDEC** New York State Department of Environmental Conservation.
 - NYSDOH** New York State Department of Health.
 - AGC** Allowable Annual Guideline Concentration.
 - J** Estimated.
 - Not analyzed.
 - USEPA** U.S. Environmental Protection Agency.
 - VOC** volatile organic compound
 - µg/m³** micrograms per cubic meter
 - <** Compound not detected above its laboratory quantification limit.
1. Vapor samples collected by ARCADIS on the dates shown and submitted to a NYSDOH ELAP certified laboratory for VOC analyses per Modified USEPA Method TO-15.
 2. Table summarizes detected compounds only.
 2. TVOC determined by summing individual detections and rounding to the nearest whole number.
 3. An SGC was not provided in the DAR-1 AGC/SGC Tables, revised February 28, 2014. An interim SGC was developed based on guidance provided in Section IV.A.2.b.1 of the New York State DAR-1 Guidelines for the Control of Toxic Ambient Air Contaminants, 1991 edition. Specifically for 1,1- dichloroethene, which is not defined as a high-toxicity compound, the Interim SGC = (smaller of Time Weighted Average [TWA] - Threshold Limit Value or TWA - Recommended Exposure Limit)/4.2. or $1,600 \mu\text{g}/\text{m}^3 / 4.2 = \text{approximately } 380 \mu\text{g}/\text{m}^3$. An interim SGC was developed for this compound because it has a moderate toxicity rating, as specified in the DAR-1 AGC/SGC Tables, revised February 28, 2014.
 4. An SGC was not provided in the DAR-1 AGC/SGC Tables, revised February 28, 2014. An interim SGC was developed based on guidance provided in Section IV.A.2.b.1 of the New York State DAR-1 Guidelines for the Control of Toxic Ambient Air Contaminants, 1991 edition. Specifically for cis-1,2 dichloroethene and trans-1,2 dichloroethene, which are not defined as a high-toxicity compounds, the interim SGC = (smaller of Time Weighted Average [TWA] - Threshold Limit Value or TWA - Recommended Exposure Limit)/4.2 or $790,000 \mu\text{g}/\text{m}^3 / 4.2 = \text{approximately } 190,000 \mu\text{g}/\text{m}^3$. An interim SGC was developed for these compounds because they have moderate toxicity ratings, as specified in the DAR-1 AGC/SGC Tables, revised February 28, 2014.

Table 4. Total Effluent Vapor Sample Analytical Results, First Quarter 2015, Tentatively Identified Compounds, Northrop Grumman Operable Unit 3, Bethpage Park Soil Gas Containment System, Former Grumman Settling Ponds, Bethpage, New York. ^(1,2,3)

Sample ID:	VSP-601
Sample Date:	3/12/2015
Units:	ppbv

Alkane	2.7 JN
Carbon dioxide	370 JN

Notes and abbreviations:

ELAP Environmental Laboratory Approval Program.

JN Compound tentatively identified, concentration is estimated.

NYSDOH New York State Department of Health.

ppbv parts per billion by volume

USEPA U.S. Environmental Protection Agency.

1. Vapor samples collected by ARCADIS on the dates shown and submitted to a NYSDOH ELAP certified laboratory for VOC analyses per Modified USEPA Method TO-15.
2. Tentatively identified compounds are identified based on review of mass spectrometry results via a comprehensive library search of all organic compounds.
3. All results are estimated.

Table 5. Summary of SCREEN3 Model Input and Outputs, First Quarter 2015, Northrop Grumman Operable Unit 3, Bethpage Park Soil Gas Containment System, Former Grumman Settling Ponds, Bethpage, New York.

Parameters	Date Sampled:	06/20/14	09/10/14	12/10/14	03/12/15
SCREEN3 Model Input					
Source Type		Point	Point	Point	Point
Emission Rate (g/s)		1	1	1	1
Stack Height (m)		10.1	10.1	10.1	10.1
Stack Inside Diameter (m)		0.41	0.41	0.41	0.41
Air Flow Rate (scfm) ⁽¹⁾		734	683	650	639 ⁽⁹⁾
Air Flow Rate (acfm @ stack temp) ⁽²⁾		781	716	655	645
Stack Gas Exit Temperature (K) ⁽¹⁾		313	309	296	297
Ambient Air Temperature (K) ⁽³⁾		294	293	276	278
Receptor Height (m) ⁽⁴⁾		1.5	1.5	1.5	1.5
Urban/Rural		Urban	Urban	Urban	Urban
Building Height (m)		2.4	2.4	2.4	2.4
Min Horizontal Bldg Dim (m)		4.9	4.9	4.9	4.9
Max Horizontal Bldg Dim (m)		5.0	5.0	5.0	5.0
Consider Bldg Downwash?		Yes	Yes	Yes	Yes
Simple/Complex Terrain Above Stack		Simple	Simple	Simple	Simple
Simple/Complex Terrain Above Stack Base		Simple	Simple	Simple	Simple
Meteorology		Full	Full	Full	Full
Automated Distances Array		Yes	Yes	Yes	Yes
Terrain Height Above Stack Base		0	0	0	0
SCREEN3 Model Output					
1-HR Max Concentration at Receptor Height ($\mu\text{g}/\text{m}^3$) ⁽⁵⁾		1188	1240	1292	1301
Annualization Factor ⁽⁶⁾		0.08	0.08	0.08	0.08
Average Annual Concentration at Receptor Height ($\mu\text{g}/\text{m}^3$) ⁽⁷⁾		95	99.2	103.4	104.1
Distance To Max Concentration (m) ⁽⁸⁾		47	46	45	45

Notes and abbreviations on last page.

Table 5. Summary of SCREEN3 Model Input and Outputs, First Quarter 2015, Northrop Grumman Operable Unit 3, Bethpage Park Soil Gas Containment System, Former Grumman Settling Ponds, Bethpage, New York.

Notes and Abbreviations:

acfm	actual cubic feet per minute
ft	feet
g/s	grams per second
°K	degrees Kelvin
m	meter
scfm	standard cubic feet per minute
µg/m ³	micrograms per cubic meter
USEPA	U.S. Environmental Protection Agency

1. The stack air flow rate (in scfm) and exit temperature were measured using a handheld thermo-anemometer. Values were measured at the stack effluent location.
2. The stack air flow rate at the stack temperature (in acfm) was calculated by dividing the stack air flow rate in scfm by the ratio of the standard temperature to the actual stack gas exit temperature.
3. The ambient temperature was recorded from the weather.newday.com website for Islip, New York. The mean actual temperature from the website was used in model calculation.
4. The receptor height corresponds to the average inhalation level.
5. SCREEN3 calculated constituent concentration at listed conditions at the specified inhalation level.
6. A USEPA time averaging conversion factor of 0.08 was used to convert the 1-hour maximum concentration output to an annual average.
7. Average annual constituent concentration at the receptor height was calculated by multiplying the one hour maximum concentration by the annualization factor.
8. SCREEN3 calculated distance to the 1-hour maximum concentration.
9. Value remeasured on March 13, 2015 due to an erroneous value recorded on March 12, 2015.

Table 6. Summary of Maximum Allowable Stack Concentration Calculations, First Quarter 2015, Northrop Grumman Operable Unit 3, Bethpage Park Soil Gas Containment System, Former Grumman Settling Ponds, Bethpage, New York.

Compound	Actual Effluent Concentrations ⁽¹⁾ (µg/m ³)			
	6/20/2014	9/10/2014	12/10/2014	3/12/15
1,1,1-Trichloroethane	7.3	6.3	15	10
1,1-Dichloroethane	6.2	5.4	14	8.9
1,1-Dichloroethene	1.4	0.77	1.7	1.3
1,2-Dichloroethane	0	0	0	0
1-Chloro-1,1-difluoroethane (Freon 142b)	260	150	120	66.6
2-Hexanone	0	0.86	0	0
Acetone	7.1	15	1.7	3.6
Benzene	0	2.7	2.7	0.31
Carbon tetrachloride	0	0	0.69	0
Chlorodifluoromethane (Freon 22)	1.2	1.1	3.9	3.3
Chloroform	9.8	7.7	14	7.3
cis-1,2-Dichloroethene	410	190	519	292
Dichlorodifluoromethane (Freon 12)	2.1	2.1	3.1	2.5
Methylene Chloride	0	0	0.76	5.2
Tetrachloroethene	13	14	15	11
Toluene	0.75	0	0	1.2
trans-1,2-Dichloroethene	2.5	2.5	3.8	2
Trichloroethylene	390	320	570	296
Trichlorofluoromethane (Freon 11)	1.2	1.6	1.6	1.6
Vinyl chloride	0.99	0	1.3	1.4

Notes and abbreviations on last page.

Table 6. Summary of Maximum Allowable Stack Concentration Calculations, First Quarter 2015, Northrop Grumman Operable Unit 3, Bethpage Park Soil Gas Containment System, Former Grumman Settling Ponds, Bethpage, New York.

Compound	AGC ⁽²⁾ ($\mu\text{g}/\text{m}^3$)	Annual MASC ⁽³⁾ ($\mu\text{g}/\text{m}^3$)			
		6/20/2014	9/10/2014	12/10/2014	3/12/2015
1,1,1-Trichloroethane	5,000	1.4E+08	1.5E+08	1.6E+08	1.6E+08
1,1-Dichloroethane	0.63	1.8E+04	1.9E+04	2.0E+04	2.0E+04
1,1-Dichloroethene	200	5.7E+06	6.0E+06	6.3E+06	6.3E+06
1,2-Dichloroethane	0.038	1.1E+03	1.1E+03	1.2E+03	1.2E+03
1-Chloro-1,1-difluoroethane (Freon 142b)	50,000	1.4E+09	1.5E+09	1.6E+09	1.6E+09
2-Hexanone	30	8.6E+05	8.9E+05	9.4E+05	9.5E+05
Acetone	30,000	8.6E+08	8.9E+08	9.4E+08	9.5E+08
Benzene	0.13	3.7E+03	3.9E+03	4.1E+03	4.1E+03
Carbon tetrachloride	0.17	4.9E+03	5.1E+03	5.3E+03	5.4E+03
Chlorodifluoromethane (Freon 22)	50,000	1.4E+09	1.5E+09	1.6E+09	1.6E+09
Chloroform	14.7	4.2E+05	4.4E+05	4.6E+05	4.6E+05
cis-1,2-Dichloroethene	63	1.8E+06	1.9E+06	2.0E+06	2.0E+06
Dichlorodifluoromethane (Freon 12)	12,000	3.4E+08	3.6E+08	3.8E+08	3.8E+08
Methylene Chloride	60	1.7E+06	1.8E+06	1.9E+06	1.9E+06
Tetrachloroethene	4.0	1.1E+05	1.2E+05	1.3E+05	1.3E+05
Toluene	5,000	1.4E+08	1.5E+08	1.6E+08	1.6E+08
trans-1,2-Dichloroethene	63	1.8E+06	1.9E+06	2.0E+06	2.0E+06
Trichloroethylene	0.2	5.7E+03	6.0E+03	6.3E+03	6.3E+03
Trichlorofluoromethane (Freon 11)	5,000	1.4E+08	1.5E+08	1.6E+08	1.6E+08
Vinyl chloride	0.068	1.9E+03	2.0E+03	2.1E+03	2.1E+03

Notes and abbreviations on last page.

Table 6. Summary of Maximum Allowable Stack Concentration Calculations, First Quarter 2015, Northrop Grumman Operable Unit 3, Bethpage Park Soil Gas Containment System, Former Grumman Settling Ponds, Bethpage, New York.

Compound	Percent of Annual MASC ⁽⁴⁾				Cumulative % MASC ⁽⁵⁾
	6/20/2014	9/10/2014	12/10/2014	3/12/2015	
1,1,1-Trichloroethane	0.0%	0.0%	0.0%	0.0%	0.0%
1,1-Dichloroethane	0.034%	0.029%	0.071%	0.045%	0.045%
1,1-Dichloroethene	0.0%	0.0%	0.0%	0.0%	0.0%
1,2-Dichloroethane	0.0%	0.0%	0.0%	0.0%	0.0%
1-Chloro-1,1-difluoroethane (Freon 142b)	0.0%	0.0%	0.0%	0.00%	0.0%
2-Hexanone	0.0%	0.0%	0.0%	0.0%	0.0%
Acetone	0.0%	0.0%	0.0%	0.0%	0.0%
Benzene	0.0%	0.070%	0.066%	0.0076%	0.034%
Carbon tetrachloride	0.0%	0.0%	0.013%	0.0%	0.0032%
Chlorodifluoromethane (Freon 22)	0.0%	0.0%	0.0%	0.0%	0.0%
Chloroform	0.0023%	0.0018%	0.0030%	0.0016%	0.0022%
cis-1,2-Dichloroethene	0.023%	0.010%	0.026%	0.015%	0.019%
Dichlorodifluoromethane (Freon 12)	0.0%	0.0%	0.0%	0.0%	0.0%
Methylene Chloride	0.0%	0.0%	0.0%	0.0%	0.0%
Tetrachloroethene	0.011%	0.012%	0.012%	0.0087%	0.011%
Toluene	0.0%	0.0%	0.0%	0.0%	0.0%
trans-1,2-Dichloroethene	0.0%	0.0%	0.0002%	0.0001%	0.0001%
Trichloroethylene	6.8%	5.4%	9.1%	4.7%	6.5%
Trichlorofluoromethane (Freon 11)	0.0%	0.0%	0.0%	0.0%	0.0%
Vinyl chloride	0.051%	0.0%	0.061%	0.065%	0.046%

Notes and abbreviations on last page.

Table 6. Summary of Maximum Allowable Stack Concentration Calculations, First Quarter 2015, Northrop Grumman Operable Unit 3, Bethpage Park Soil Gas Containment System, Former Grumman Settling Ponds, Bethpage, New York.

Notes and Abbreviations:

AGC	Allowable Annual Guideline Concentration
DAR-1	Division of Air Resources Air Guide-1
MASC	Maximum Allowable Stack Concentration
$\mu\text{g}/\text{m}^3$	micrograms per cubic meter
NS	Guideline concentrations not specified in the NYSDEC DAR-1 AGC/SGC tables, revised February 28, 2014.
NYSDEC	New York State Department of Environmental Conservation
SGC	Short-term Guideline Concentration
%	percent

1. Actual effluent concentrations are analytical results from air samples collected on the dates shown. Data in this table corresponds to the past year of system operation. Table summarizes detected compounds only.
2. AGC refers to the compound-specific AGC per the NYSDEC DAR-1 AGC/SGC tables, revised February 28, 2014.
3. Annual MASC was calculated by dividing the product of the AGC of a compound and the ratio of the SCREEN3 gas emission rate and the SCREEN 3 average annual concentration at receptor height by the air flow rate at the stack temperature and multiplying by the appropriate conversion factors.
4. Percent of MASC was calculated by dividing the actual effluent concentration by the MASC for the past four quarters of operation.
5. Cumulative percent of the MASC was calculated using a time-weighted average of the percent MASC per event. Values shown have been rounded to include two significant figures.