

Subject:

PSEG Long Island Meeting

Arcadis of New York, Inc.
Two Huntington Quadrangle
Suite 1S10
Melville
New York 11747
Tel 631 249 7600
Fax 631 249 7610
www.arcadis.com

Department:

ENVIRONMENT

Arcadis Project No.:

NY001496.2415.MTGF6

Meeting Location:

**Online Web Meeting and
Teleconference**

Participants:

Linda DeSantis, PSEG Long Island
Peter McEleney, PSEG Long Island
Steven Bruckner, PSEG Long Island
Nick Montanaro, PSEG Long Island
Anthony DiFlora, PSEG Long Island
Victor Blumoehr, PSEG Long Island
Jim Harrington, NYSDEC
Steven Scharf, NYSDEC
Brian Schneider, Nassau County DPW
William Nimo, Nassau County DPW
Ed Hannon, Northrop Grumman
Chris Engler, Arcadis
Christina Tuohy, Arcadis
Ahren Tatro, Arcadis

Meeting Date:

June 30, 2016

Copies :

Carlo San Giovanni, ARCADIS
Mike Wolfert, ARCADIS
David Stern, ARCADIS
Arthur Zahradnik, ARCADIS
Neal Slattery, PSEG Long Island
John Ellsworth, Town of Oyster Bay

Minutes by:

Christina Tuohy, Arcadis

Issue Date:

July 7, 2016

To support the RW-21 Area expedited remedial design, Arcadis held an online teleconference meeting with PSEG Long Island on June 30, 2016. The meeting ran approximately 60 minutes. Below are the meeting notes.

- The meeting started at 1:00 PM and began with introductions. Arcadis had prepared an agenda and presentation for the meeting.
- Chris Engler stated the meeting purpose was to provide a description of the RW-21 Area Treatment System project requirements and gain an understanding of PSEG Long Island

requirements. He indicated that the objective of the meeting was to determine how to complete the project within the constraints of PSEG Long Island requirements.

- Chris Engler gave an overview of the project and summarized the need for expedited design based on recent communications with NYSDEC.
- Chris Engler listed the following Stakeholders:
 - PSEG Long Island
 - Overhead Electric Transmission (Local and Regional Transmission)
 - High Voltage Transmission Conduit in Central Avenue
 - Counterpoise System
 - Town of Oyster Bay
 - Town Roads and Associated Rights of Way
 - Stormwater Conveyance Pipe
 - Nassau County
 - Central Avenue
 - Sanitary and Stormwater Conveyance Pipe and traffic signals
 - Bethpage Water District
 - Potable Water and Conveyance Piping
 - Other Utility Companies
 - National Grid Gas
 - Cable (Verizon, Cablevision of Woodbury, MCI)
 - Etc.
 - US Navy
 - Groundwater Remediation System (GM-38)
- The following additional stakeholders were also identified during the meeting:
 - Long Island Rail Road
 - Possible easement and/or land owner (parcel 206)
 - LIPA
 - Possible easement and/or land owner
 - National Grid
 - Possible easement/road crossing and/or land owner, 20-inch main on parcel 206
 - Residential Property Owner
 - Possible agreement for meter location
- Chris provided a discussion regarding a typical cross section for the proposed system in the area of PSEG Long Island infrastructure. A discussion regarding the required clearances for PSEG infrastructure included the following guidance:
 - Overhead transmission lines: 25-foot working clearance
 - Underground counterpoise: 2 to 3-foot clearance

- Below-grade transmission: 5-foot clearance
- PSEG discussed NYS Code Rule 753, calling 811 and the test hole procedure required for the proposed work.
- There was a discussion regarding the use of PSEG Long Island drawings in development of the proposed design. Arcadis will provide a letter and figure (attached) indicating the boundary of the work area. PSEG Long Island will work to obtain approval to release the infrastructure drawings and easement descriptions.
- Arcadis discussed the work done in conjunction with Neal Slattery. An initial load letter and associated site plan and one line diagrams were submitted. Arcadis will be submitting an application which will allow for PSEG Long Island planning to initiate the process. PSEG Planning department will aid in determining a proper location for the RW-20 vault meter.
- PSEG Long Island noted that below grade facilities tend to fill with water. Chris Engler noted that this will be taken into consideration in the vault design.

Meeting adjourned at 2:00 PM.

Linda DeSantis
Sr. Real Estate Representative
PSEG Long Island
Office: 516-949-8219

Arcadis of New York, Inc.
Two Huntington Quadrangle
Suite 1S10
Melville
New York 11747
Tel 631 249 7600
Fax 631 249 7610
www.arcadis.com

Subject:

Request for Information, RW-21 Area Treatment System, Northrop Grumman Systems Corporation, Bethpage, New York.

ENVIRONMENT

Dear Linda,

Date:
July 12, 2016

Arcadis of New York, Inc. requests engineering drawings (i.e., below grade transmission lines and infrastructure, counterpoise, above grade transmission infrastructure, etc.), and meets and bounds easement descriptions in areas located in Bethpage (Town of Oyster Bay), NY as indicated below. As a representative of our client, Northrop Grumman Systems Corporation, Arcadis will be using the utility information for planning purposes.

Contact:
Christina Tuohy

Phone:
631-391-5213

The attached PSEG Long Island utility drawings have been edited in red to depict a clouded area surrounding the approximate locations of proposed RW-21 Area Treatment System improvements. We are specifically requesting engineering drawings from PSEG Long Island for below grade transmission line, counterpoise and above grade transmission infrastructure, and meets and bounds easement descriptions within the red clouded areas. The areas are along Seaman Avenue, Central Avenue, William Street, and Broadway, and along the green belt.

Email:
christinaberardi.tuohy@arcadis.com
Our ref:
NY001496.2415.R31E3

If for any reason any portion of my request is denied, please inform me of the reason for the denial in writing and provide the name and address of the person or body to whom an appeal should be directed.

Linda DeSantis
July 7, 2016

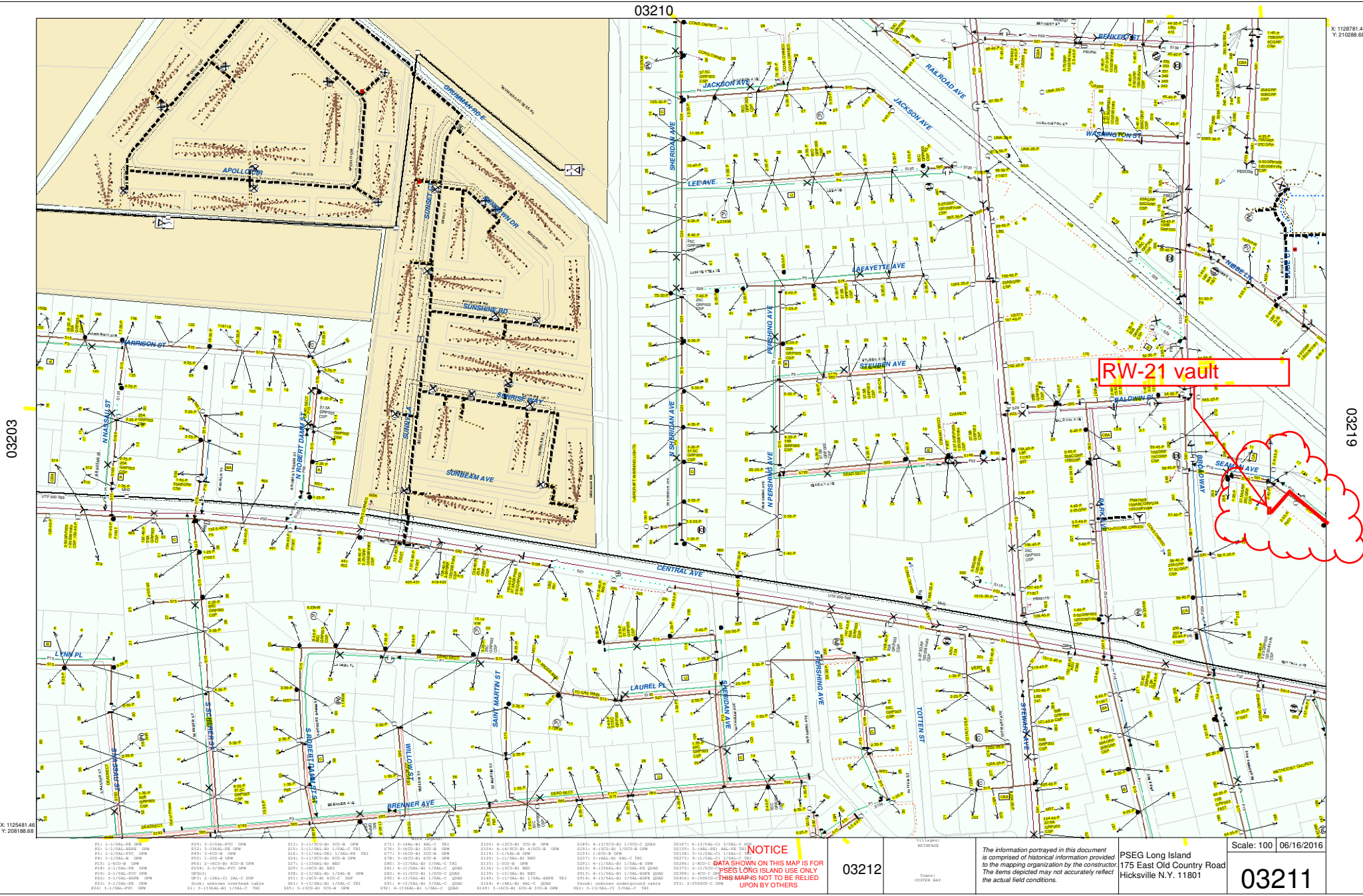
Please contact me if you have any questions or comments.

Sincerely,

Arcadis of New York, Inc.

A handwritten signature in black ink that reads "Christina Berardi Tuohy". The signature is written in a cursive style with a large, looping 'T' at the end.

Christina Tuohy
Civil Engineer



03203

03210

X: 1128781.46
Y: 210288.66

03203

03219

X: 1125481.46
Y: 208188.66

- P1: 1-1/2"AL-PE QPW
- P2: 1-1/2"AL-ROPE QPW
- P3: 1-1/2"AL-PVC QPW
- P4: 1-1/2"AL-C QPW
- P5: 1-1/2"AL-B QPW
- P6: 1-1/2"AL-PC QPW
- P7: 1-1/2"AL-ROPE QPW
- P8: 1-1/2"AL-PVC QPW
- P9: 1-1/2"AL-C QPW
- P10: 1-1/2"AL-B QPW
- P11: 1-1/2"AL-PC QPW
- P12: 1-1/2"AL-ROPE QPW
- P13: 1-1/2"AL-PVC QPW
- P14: 1-1/2"AL-C QPW
- P15: 1-1/2"AL-B QPW
- P16: 1-1/2"AL-PC QPW
- P17: 1-1/2"AL-ROPE QPW
- P18: 1-1/2"AL-PVC QPW
- P19: 1-1/2"AL-C QPW
- P20: 1-1/2"AL-B QPW
- P21: 1-1/2"AL-PC QPW
- P22: 1-1/2"AL-ROPE QPW
- P23: 1-1/2"AL-PVC QPW
- P24: 1-1/2"AL-C QPW
- P25: 1-1/2"AL-B QPW
- P26: 1-1/2"AL-PC QPW
- P27: 1-1/2"AL-ROPE QPW
- P28: 1-1/2"AL-PVC QPW
- P29: 1-1/2"AL-C QPW
- P30: 1-1/2"AL-B QPW
- P31: 1-1/2"AL-PC QPW
- P32: 1-1/2"AL-ROPE QPW
- P33: 1-1/2"AL-PVC QPW
- P34: 1-1/2"AL-C QPW
- P35: 1-1/2"AL-B QPW
- P36: 1-1/2"AL-PC QPW
- P37: 1-1/2"AL-ROPE QPW
- P38: 1-1/2"AL-PVC QPW
- P39: 1-1/2"AL-C QPW
- P40: 1-1/2"AL-B QPW
- P41: 1-1/2"AL-PC QPW
- P42: 1-1/2"AL-ROPE QPW
- P43: 1-1/2"AL-PVC QPW
- P44: 1-1/2"AL-C QPW
- P45: 1-1/2"AL-B QPW
- P46: 1-1/2"AL-PC QPW
- P47: 1-1/2"AL-ROPE QPW
- P48: 1-1/2"AL-PVC QPW
- P49: 1-1/2"AL-C QPW
- P50: 1-1/2"AL-B QPW
- P51: 1-1/2"AL-PC QPW
- P52: 1-1/2"AL-ROPE QPW
- P53: 1-1/2"AL-PVC QPW
- P54: 1-1/2"AL-C QPW
- P55: 1-1/2"AL-B QPW
- P56: 1-1/2"AL-PC QPW
- P57: 1-1/2"AL-ROPE QPW
- P58: 1-1/2"AL-PVC QPW
- P59: 1-1/2"AL-C QPW
- P60: 1-1/2"AL-B QPW
- P61: 1-1/2"AL-PC QPW
- P62: 1-1/2"AL-ROPE QPW
- P63: 1-1/2"AL-PVC QPW
- P64: 1-1/2"AL-C QPW
- P65: 1-1/2"AL-B QPW
- P66: 1-1/2"AL-PC QPW
- P67: 1-1/2"AL-ROPE QPW
- P68: 1-1/2"AL-PVC QPW
- P69: 1-1/2"AL-C QPW
- P70: 1-1/2"AL-B QPW
- P71: 1-1/2"AL-PC QPW
- P72: 1-1/2"AL-ROPE QPW
- P73: 1-1/2"AL-PVC QPW
- P74: 1-1/2"AL-C QPW
- P75: 1-1/2"AL-B QPW
- P76: 1-1/2"AL-PC QPW
- P77: 1-1/2"AL-ROPE QPW
- P78: 1-1/2"AL-PVC QPW
- P79: 1-1/2"AL-C QPW
- P80: 1-1/2"AL-B QPW
- P81: 1-1/2"AL-PC QPW
- P82: 1-1/2"AL-ROPE QPW
- P83: 1-1/2"AL-PVC QPW
- P84: 1-1/2"AL-C QPW
- P85: 1-1/2"AL-B QPW
- P86: 1-1/2"AL-PC QPW
- P87: 1-1/2"AL-ROPE QPW
- P88: 1-1/2"AL-PVC QPW
- P89: 1-1/2"AL-C QPW
- P90: 1-1/2"AL-B QPW
- P91: 1-1/2"AL-PC QPW
- P92: 1-1/2"AL-ROPE QPW
- P93: 1-1/2"AL-PVC QPW
- P94: 1-1/2"AL-C QPW
- P95: 1-1/2"AL-B QPW
- P96: 1-1/2"AL-PC QPW
- P97: 1-1/2"AL-ROPE QPW
- P98: 1-1/2"AL-PVC QPW
- P99: 1-1/2"AL-C QPW
- P100: 1-1/2"AL-B QPW

NOTICE
 DATA SHOWN ON THIS MAP IS FOR
 PSEG LONG ISLAND USE ONLY
 THIS MAP IS NOT TO BE RELIED
 UPON BY OTHERS

03212

11/13/2016
 SETBACK
 TOWN OF
 CANTON NY

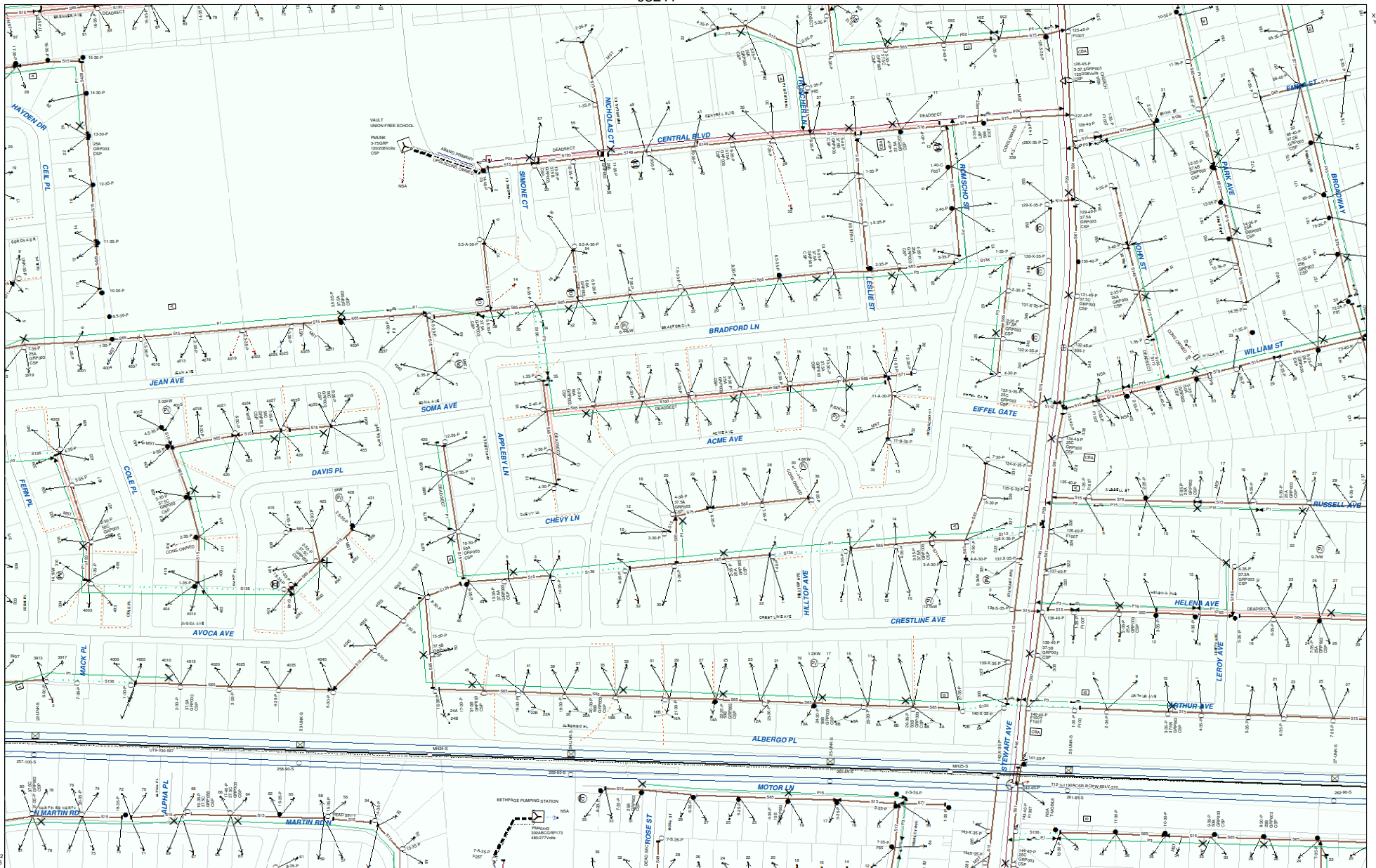
The information portrayed in this document is comprised of historical information provided to the mapping organization by the constructor. The items depicted may not accurately reflect the actual field conditions.

PSEG Long Island
 175 East Old Country Road
 Hicksville N.Y. 11801

Scale: 100 06/16/2016

03211

Red clouded lines represent proposed RW-21 Area improvements



X: 1125481.02
Y: 206088.68

- S601: unknown overhead cable
- S602: 1-1/2" (305mm) PVC
- S603: 1-1/2" (305mm) PVC
- S604: 1-1/2" (305mm) PVC
- S605: 1-1/2" (305mm) PVC
- S606: 1-1/2" (305mm) PVC
- S607: 1-1/2" (305mm) PVC
- S608: 1-1/2" (305mm) PVC
- S609: 1-1/2" (305mm) PVC
- S610: 1-1/2" (305mm) PVC
- S611: 1-1/2" (305mm) PVC
- S612: 1-1/2" (305mm) PVC
- S613: 1-1/2" (305mm) PVC
- S614: 1-1/2" (305mm) PVC
- S615: 1-1/2" (305mm) PVC
- S616: 1-1/2" (305mm) PVC
- S617: 1-1/2" (305mm) PVC
- S618: 1-1/2" (305mm) PVC
- S619: 1-1/2" (305mm) PVC
- S620: 1-1/2" (305mm) PVC
- S621: 1-1/2" (305mm) PVC
- S622: 1-1/2" (305mm) PVC
- S623: 1-1/2" (305mm) PVC
- S624: 1-1/2" (305mm) PVC
- S625: 1-1/2" (305mm) PVC
- S626: 1-1/2" (305mm) PVC
- S627: 1-1/2" (305mm) PVC
- S628: 1-1/2" (305mm) PVC
- S629: 1-1/2" (305mm) PVC
- S630: 1-1/2" (305mm) PVC
- S631: 1-1/2" (305mm) PVC
- S632: 1-1/2" (305mm) PVC
- S633: 1-1/2" (305mm) PVC
- S634: 1-1/2" (305mm) PVC
- S635: 1-1/2" (305mm) PVC
- S636: 1-1/2" (305mm) PVC
- S637: 1-1/2" (305mm) PVC
- S638: 1-1/2" (305mm) PVC
- S639: 1-1/2" (305mm) PVC
- S640: 1-1/2" (305mm) PVC
- S641: 1-1/2" (305mm) PVC
- S642: 1-1/2" (305mm) PVC
- S643: 1-1/2" (305mm) PVC
- S644: 1-1/2" (305mm) PVC
- S645: 1-1/2" (305mm) PVC
- S646: 1-1/2" (305mm) PVC
- S647: 1-1/2" (305mm) PVC
- S648: 1-1/2" (305mm) PVC
- S649: 1-1/2" (305mm) PVC
- S650: 1-1/2" (305mm) PVC
- S651: 1-1/2" (305mm) PVC
- S652: 1-1/2" (305mm) PVC
- S653: 1-1/2" (305mm) PVC
- S654: 1-1/2" (305mm) PVC
- S655: 1-1/2" (305mm) PVC
- S656: 1-1/2" (305mm) PVC
- S657: 1-1/2" (305mm) PVC
- S658: 1-1/2" (305mm) PVC
- S659: 1-1/2" (305mm) PVC
- S660: 1-1/2" (305mm) PVC
- S661: 1-1/2" (305mm) PVC
- S662: 1-1/2" (305mm) PVC
- S663: 1-1/2" (305mm) PVC
- S664: 1-1/2" (305mm) PVC
- S665: 1-1/2" (305mm) PVC
- S666: 1-1/2" (305mm) PVC
- S667: 1-1/2" (305mm) PVC
- S668: 1-1/2" (305mm) PVC
- S669: 1-1/2" (305mm) PVC
- S670: 1-1/2" (305mm) PVC
- S671: 1-1/2" (305mm) PVC
- S672: 1-1/2" (305mm) PVC
- S673: 1-1/2" (305mm) PVC
- S674: 1-1/2" (305mm) PVC
- S675: 1-1/2" (305mm) PVC
- S676: 1-1/2" (305mm) PVC
- S677: 1-1/2" (305mm) PVC
- S678: 1-1/2" (305mm) PVC
- S679: 1-1/2" (305mm) PVC
- S680: 1-1/2" (305mm) PVC
- S681: 1-1/2" (305mm) PVC
- S682: 1-1/2" (305mm) PVC
- S683: 1-1/2" (305mm) PVC
- S684: 1-1/2" (305mm) PVC
- S685: 1-1/2" (305mm) PVC
- S686: 1-1/2" (305mm) PVC
- S687: 1-1/2" (305mm) PVC
- S688: 1-1/2" (305mm) PVC
- S689: 1-1/2" (305mm) PVC
- S690: 1-1/2" (305mm) PVC
- S691: 1-1/2" (305mm) PVC
- S692: 1-1/2" (305mm) PVC
- S693: 1-1/2" (305mm) PVC
- S694: 1-1/2" (305mm) PVC
- S695: 1-1/2" (305mm) PVC
- S696: 1-1/2" (305mm) PVC
- S697: 1-1/2" (305mm) PVC
- S698: 1-1/2" (305mm) PVC
- S699: 1-1/2" (305mm) PVC
- S700: 1-1/2" (305mm) PVC

NOTICE
 DATA SHOWN ON THIS MAP IS FOR
 PSEG LONG ISLAND USE ONLY
 THIS MAP IS NOT TO BE RELIED
 UPON BY OTHERS

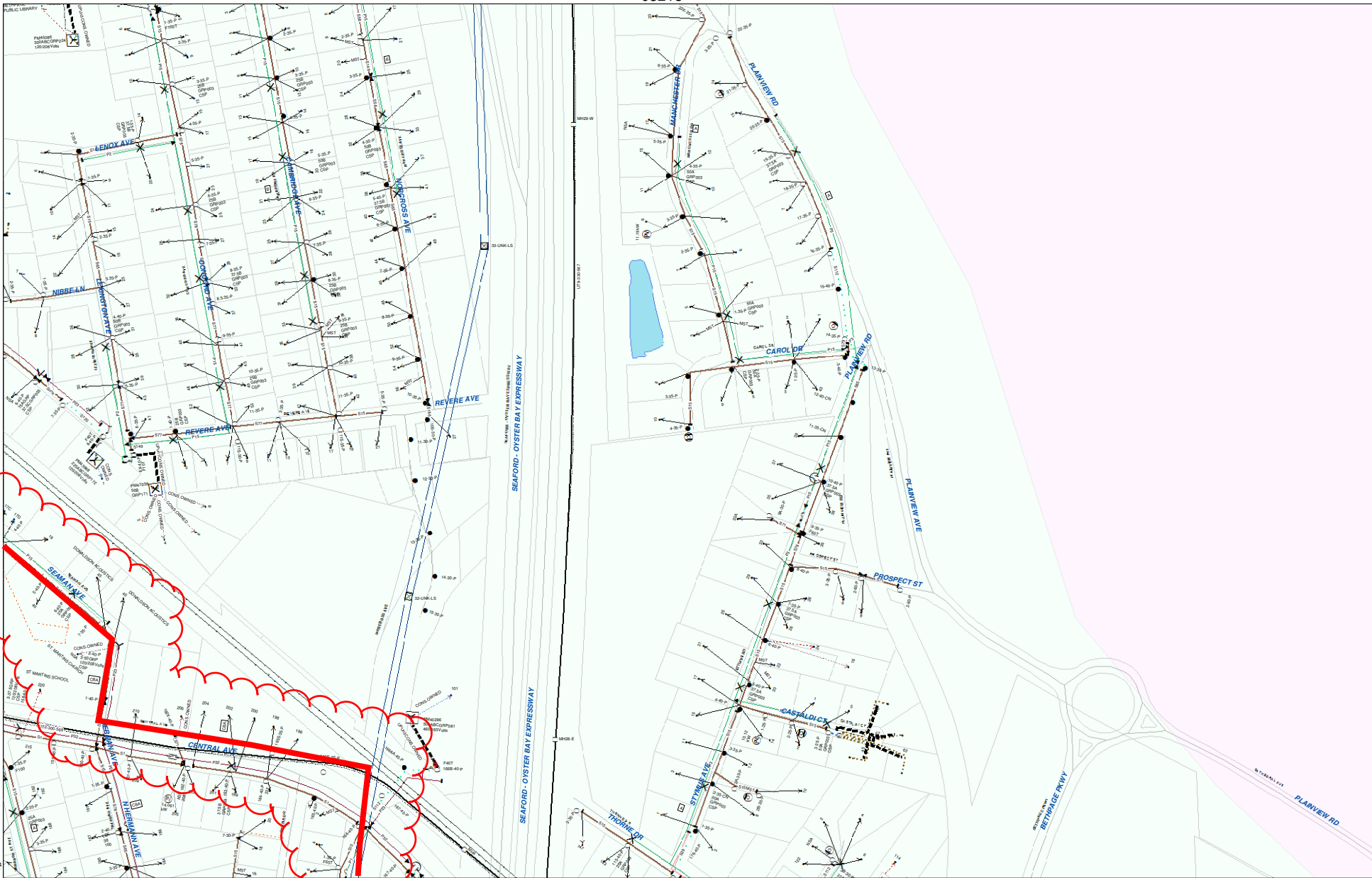
03213

The information portrayed in this document
 is comprised of historical information provided
 to the mapping organization by the constructor.
 The items depicted may not accurately reflect
 the actual field conditions.

PSEG Long Island
 175 East Old Country Road
 Hicksville N.Y. 11801

Scale: 100 06/16/2016

03212



P11: 1-1/2"AL-DE QDW	UP001: 00000	S78: 3-(6"O-B) 6"O-B QDW	S839: 1-(12"AL-DEDE) SED
P12: 1-1/2"AL-DEDE QDW	UP002: unknown overhead cable	S79: 2-(6"O-B) 6"O-C TRS	S840: unknown underground cable
P13: 1-1/2"AL-SPC QDW	S11: 3-(12"AL-B) 1/2"AL-C TRS	S122: 2-(6"O-B) 6"O-C TRS	S851: 3-(12"AL-B) 1/2"AL-C TRS
P14: 1-1/2"AL-B QDW	S12: 3-(12"AL-B) 1/2"AL-C TRS	S123: 4-(12"AL-B) 1/2"AL-C TRS	S852: 4-(12"AL-B) 1/2"AL-C TRS
P15: 1-1/2"AL-DE QDW	S21: 1-(6"O-B) SED	S129: 1-(12"AL-B) SED	S835: 3-(4"AL-TR) 4"AL-TR TRS
P16: 1-1/2"AL-SPC QDW	S26: 2-(12"AL-B) 1/2"AL-C TRS	S149: 3-(12"AL-B) 1/2"AL-C TRS	S836: 4-(12"AL-B) 1/2"AL-C TRS
P17: 1-1/2"AL-DEDE QDW	S31: 3-(12"AL-DE) 1/2"AL-C QDW	S164: 4-(4"AL-B) 4"AL-C QDW	S839: 1-6"O-C QDW
P18: 1-1/2"AL-DE QDW	S34: 3-(12"AL-DE) 1/2"AL-C QDW	S181: 1-(6"O-B) 6"O-C TRS	T12: 3-2"AL-DE QDW
P19: 1-1/2"AL-B QDW	S41: 1-(6"O-B) 6"O-B QDW	S191: 1-(6"O-B) 6"O-B QDW	T13: 3-2"AL-DE QDW
P20: 1-1/2"AL-DE QDW	S42: 1-(6"O-B) 6"O-B QDW	S201: 1-(6"O-B) 6"O-B QDW	T2: 3-2"AL-DE QDW
P21: 1-1/2"AL-DE QDW	S43: 1-(6"O-B) 6"O-B QDW	S202: 1-(6"O-B) 6"O-B QDW	T3: 3-2"AL-DE QDW
P22: 1-1/2"AL-DE QDW	S44: 1-(6"O-B) 6"O-B QDW	S203: 1-(6"O-B) 6"O-B QDW	T4: 3-2"AL-DE QDW
P23: 1-1/2"AL-DE QDW	S45: 1-(6"O-B) 6"O-B QDW	S204: 1-(6"O-B) 6"O-B QDW	T5: 3-2"AL-DE QDW
P24: 1-1/2"AL-DE QDW	S46: 1-(6"O-B) 6"O-B QDW	S205: 1-(6"O-B) 6"O-B QDW	T6: 3-2"AL-DE QDW
P25: 1-1/2"AL-DE QDW	S47: 1-(6"O-B) 6"O-B QDW	S206: 1-(6"O-B) 6"O-B QDW	T7: 3-2"AL-DE QDW
P26: 1-1/2"AL-DE QDW	S48: 1-(6"O-B) 6"O-B QDW	S207: 1-(6"O-B) 6"O-B QDW	T8: 3-2"AL-DE QDW
P27: 1-1/2"AL-DE QDW	S49: 1-(6"O-B) 6"O-B QDW	S208: 1-(6"O-B) 6"O-B QDW	T9: 3-2"AL-DE QDW
P28: 1-1/2"AL-DE QDW	S50: 1-(6"O-B) 6"O-B QDW	S209: 1-(6"O-B) 6"O-B QDW	T10: 3-2"AL-DE QDW

NOTICE
DATA SHOWN ON THIS MAP IS FOR
PSEG LONG ISLAND USE ONLY
THIS MAP IS NOT TO BE RELIED
UPON BY OTHERS

03220

TITLE SHEET
SETBACK
OLD SETBACK

The information portrayed in this document is comprised of historical information provided to the mapping organization by the constructor. The items depicted may not accurately reflect the actual field conditions.

PSEG Long Island
175 East Old Country Road
Hicksville N.Y. 11801

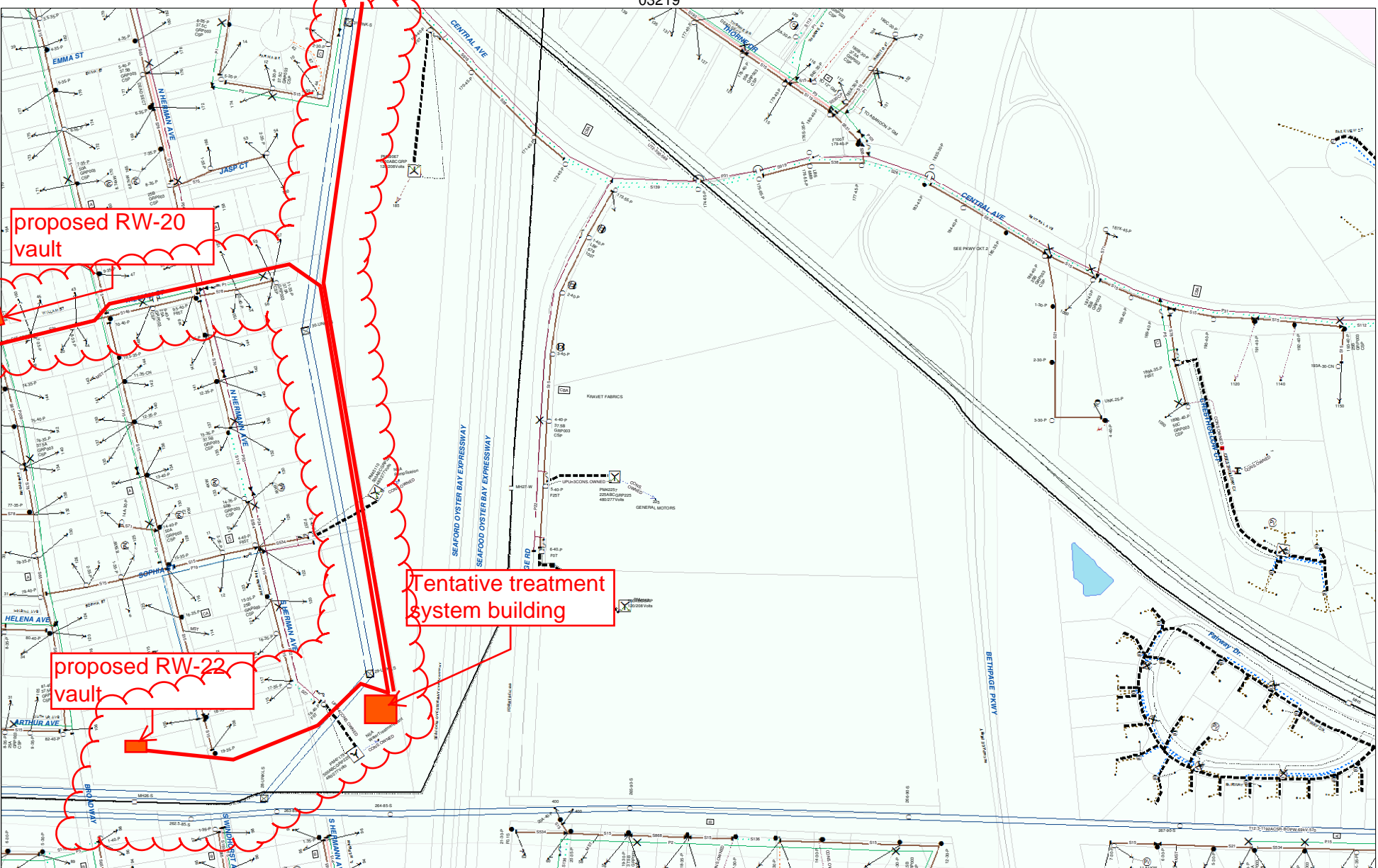
Scale: 100 06/16/2016

03219

Red clouded lines represent proposed
RW-21 Area improvements

03219

X: 1132081.89
Y: 208188.67



proposed RW-20 vault

Tentative treatment system building

proposed RW-22 vault

03212

03228

X: 1128781.03
Y: 206088.67

<p>P1: 1-170AL-DE OWP P2: 1-170AL-DE OWP P3: 1-170AL-DE OWP P4: 1-170AL-DE OWP P5: 1-170AL-DE OWP P6: 1-170AL-DE OWP P7: 1-170AL-DE OWP P8: 1-170AL-DE OWP P9: 1-170AL-DE OWP P10: 1-170AL-DE OWP P11: 1-170AL-DE OWP P12: 1-170AL-DE OWP P13: 1-170AL-DE OWP P14: 1-170AL-DE OWP P15: 1-170AL-DE OWP P16: 1-170AL-DE OWP P17: 1-170AL-DE OWP P18: 1-170AL-DE OWP P19: 1-170AL-DE OWP P20: 1-170AL-DE OWP</p>	<p>P201: 1-170AL-DE OWP P202: 1-170AL-DE OWP P203: 1-170AL-DE OWP P204: 1-170AL-DE OWP P205: 1-170AL-DE OWP P206: 1-170AL-DE OWP P207: 1-170AL-DE OWP P208: 1-170AL-DE OWP P209: 1-170AL-DE OWP P210: 1-170AL-DE OWP P211: 1-170AL-DE OWP P212: 1-170AL-DE OWP P213: 1-170AL-DE OWP P214: 1-170AL-DE OWP P215: 1-170AL-DE OWP P216: 1-170AL-DE OWP P217: 1-170AL-DE OWP P218: 1-170AL-DE OWP P219: 1-170AL-DE OWP P220: 1-170AL-DE OWP</p>	<p>P230: 1-170AL-DE OWP P231: 1-170AL-DE OWP P232: 1-170AL-DE OWP P233: 1-170AL-DE OWP P234: 1-170AL-DE OWP P235: 1-170AL-DE OWP P236: 1-170AL-DE OWP P237: 1-170AL-DE OWP P238: 1-170AL-DE OWP P239: 1-170AL-DE OWP P240: 1-170AL-DE OWP P241: 1-170AL-DE OWP P242: 1-170AL-DE OWP P243: 1-170AL-DE OWP P244: 1-170AL-DE OWP P245: 1-170AL-DE OWP P246: 1-170AL-DE OWP P247: 1-170AL-DE OWP P248: 1-170AL-DE OWP P249: 1-170AL-DE OWP P250: 1-170AL-DE OWP</p>	<p>P250: 1-170AL-DE OWP P251: 1-170AL-DE OWP P252: 1-170AL-DE OWP P253: 1-170AL-DE OWP P254: 1-170AL-DE OWP P255: 1-170AL-DE OWP P256: 1-170AL-DE OWP P257: 1-170AL-DE OWP P258: 1-170AL-DE OWP P259: 1-170AL-DE OWP P260: 1-170AL-DE OWP P261: 1-170AL-DE OWP P262: 1-170AL-DE OWP P263: 1-170AL-DE OWP P264: 1-170AL-DE OWP P265: 1-170AL-DE OWP P266: 1-170AL-DE OWP P267: 1-170AL-DE OWP P268: 1-170AL-DE OWP P269: 1-170AL-DE OWP P270: 1-170AL-DE OWP</p>	<p>P270: 1-170AL-DE OWP P271: 1-170AL-DE OWP P272: 1-170AL-DE OWP P273: 1-170AL-DE OWP P274: 1-170AL-DE OWP P275: 1-170AL-DE OWP P276: 1-170AL-DE OWP P277: 1-170AL-DE OWP P278: 1-170AL-DE OWP P279: 1-170AL-DE OWP P280: 1-170AL-DE OWP P281: 1-170AL-DE OWP P282: 1-170AL-DE OWP P283: 1-170AL-DE OWP P284: 1-170AL-DE OWP P285: 1-170AL-DE OWP P286: 1-170AL-DE OWP P287: 1-170AL-DE OWP P288: 1-170AL-DE OWP P289: 1-170AL-DE OWP P290: 1-170AL-DE OWP</p>	<p>P290: 1-170AL-DE OWP P291: 1-170AL-DE OWP P292: 1-170AL-DE OWP P293: 1-170AL-DE OWP P294: 1-170AL-DE OWP P295: 1-170AL-DE OWP P296: 1-170AL-DE OWP P297: 1-170AL-DE OWP P298: 1-170AL-DE OWP P299: 1-170AL-DE OWP P300: 1-170AL-DE OWP P301: 1-170AL-DE OWP P302: 1-170AL-DE OWP P303: 1-170AL-DE OWP P304: 1-170AL-DE OWP P305: 1-170AL-DE OWP P306: 1-170AL-DE OWP P307: 1-170AL-DE OWP P308: 1-170AL-DE OWP P309: 1-170AL-DE OWP P310: 1-170AL-DE OWP</p>	<p>P310: 1-170AL-DE OWP P311: 1-170AL-DE OWP P312: 1-170AL-DE OWP P313: 1-170AL-DE OWP P314: 1-170AL-DE OWP P315: 1-170AL-DE OWP P316: 1-170AL-DE OWP P317: 1-170AL-DE OWP P318: 1-170AL-DE OWP P319: 1-170AL-DE OWP P320: 1-170AL-DE OWP P321: 1-170AL-DE OWP P322: 1-170AL-DE OWP P323: 1-170AL-DE OWP P324: 1-170AL-DE OWP P325: 1-170AL-DE OWP P326: 1-170AL-DE OWP P327: 1-170AL-DE OWP P328: 1-170AL-DE OWP P329: 1-170AL-DE OWP P330: 1-170AL-DE OWP</p>	<p>P330: 1-170AL-DE OWP P331: 1-170AL-DE OWP P332: 1-170AL-DE OWP P333: 1-170AL-DE OWP P334: 1-170AL-DE OWP P335: 1-170AL-DE OWP P336: 1-170AL-DE OWP P337: 1-170AL-DE OWP P338: 1-170AL-DE OWP P339: 1-170AL-DE OWP P340: 1-170AL-DE OWP P341: 1-170AL-DE OWP P342: 1-170AL-DE OWP P343: 1-170AL-DE OWP P344: 1-170AL-DE OWP P345: 1-170AL-DE OWP P346: 1-170AL-DE OWP P347: 1-170AL-DE OWP P348: 1-170AL-DE OWP P349: 1-170AL-DE OWP P350: 1-170AL-DE OWP</p>	<p>P350: 1-170AL-DE OWP P351: 1-170AL-DE OWP P352: 1-170AL-DE OWP P353: 1-170AL-DE OWP P354: 1-170AL-DE OWP P355: 1-170AL-DE OWP P356: 1-170AL-DE OWP P357: 1-170AL-DE OWP P358: 1-170AL-DE OWP P359: 1-170AL-DE OWP P360: 1-170AL-DE OWP P361: 1-170AL-DE OWP P362: 1-170AL-DE OWP P363: 1-170AL-DE OWP P364: 1-170AL-DE OWP P365: 1-170AL-DE OWP P366: 1-170AL-DE OWP P367: 1-170AL-DE OWP P368: 1-170AL-DE OWP P369: 1-170AL-DE OWP P370: 1-170AL-DE OWP</p>	<p>UT01: 1-20000-C OWP UT02: 1-20000-C OWP UT03: 1-20000-C OWP UT04: 1-20000-C OWP UT05: 1-20000-C OWP UT06: 1-20000-C OWP UT07: 1-20000-C OWP UT08: 1-20000-C OWP UT09: 1-20000-C OWP UT10: 1-20000-C OWP UT11: 1-20000-C OWP UT12: 1-20000-C OWP UT13: 1-20000-C OWP UT14: 1-20000-C OWP UT15: 1-20000-C OWP UT16: 1-20000-C OWP UT17: 1-20000-C OWP UT18: 1-20000-C OWP UT19: 1-20000-C OWP UT20: 1-20000-C OWP</p>	<p>UT20: 1-20000-C OWP UT21: 1-20000-C OWP UT22: 1-20000-C OWP UT23: 1-20000-C OWP UT24: 1-20000-C OWP UT25: 1-20000-C OWP UT26: 1-20000-C OWP UT27: 1-20000-C OWP UT28: 1-20000-C OWP UT29: 1-20000-C OWP UT30: 1-20000-C OWP UT31: 1-20000-C OWP UT32: 1-20000-C OWP UT33: 1-20000-C OWP UT34: 1-20000-C OWP UT35: 1-20000-C OWP UT36: 1-20000-C OWP UT37: 1-20000-C OWP UT38: 1-20000-C OWP UT39: 1-20000-C OWP UT40: 1-20000-C OWP</p>	<p>UT40: 1-20000-C OWP UT41: 1-20000-C OWP UT42: 1-20000-C OWP UT43: 1-20000-C OWP UT44: 1-20000-C OWP UT45: 1-20000-C OWP UT46: 1-20000-C OWP UT47: 1-20000-C OWP UT48: 1-20000-C OWP UT49: 1-20000-C OWP UT50: 1-20000-C OWP UT51: 1-20000-C OWP UT52: 1-20000-C OWP UT53: 1-20000-C OWP UT54: 1-20000-C OWP UT55: 1-20000-C OWP UT56: 1-20000-C OWP UT57: 1-20000-C OWP UT58: 1-20000-C OWP UT59: 1-20000-C OWP UT60: 1-20000-C OWP</p>			
<p>NOTICE DATA SHOWN ON THIS MAP IS FOR PSEG LONG ISLAND USE ONLY THIS MAP IS NOT TO BE RELIED UPON BY OTHERS</p>										<p>03221</p>	<p>Scale: 100 DATE: 06/16/2016</p>	<p>The information portrayed in this document is comprised of historical information provided to the mapping organization by the constructor. The items depicted may not accurately reflect the actual field conditions.</p>	<p>PSEG Long Island 175 East Old Country Road Hicksville N.Y. 11801</p>	<p>03220</p>

Red clouded lines represent proposed RW-21 Area improvements