

Neighborhood Update

RW-21 Area Remedial Design/Remedial Action

Operable Unit 3 – Bethpage, New York

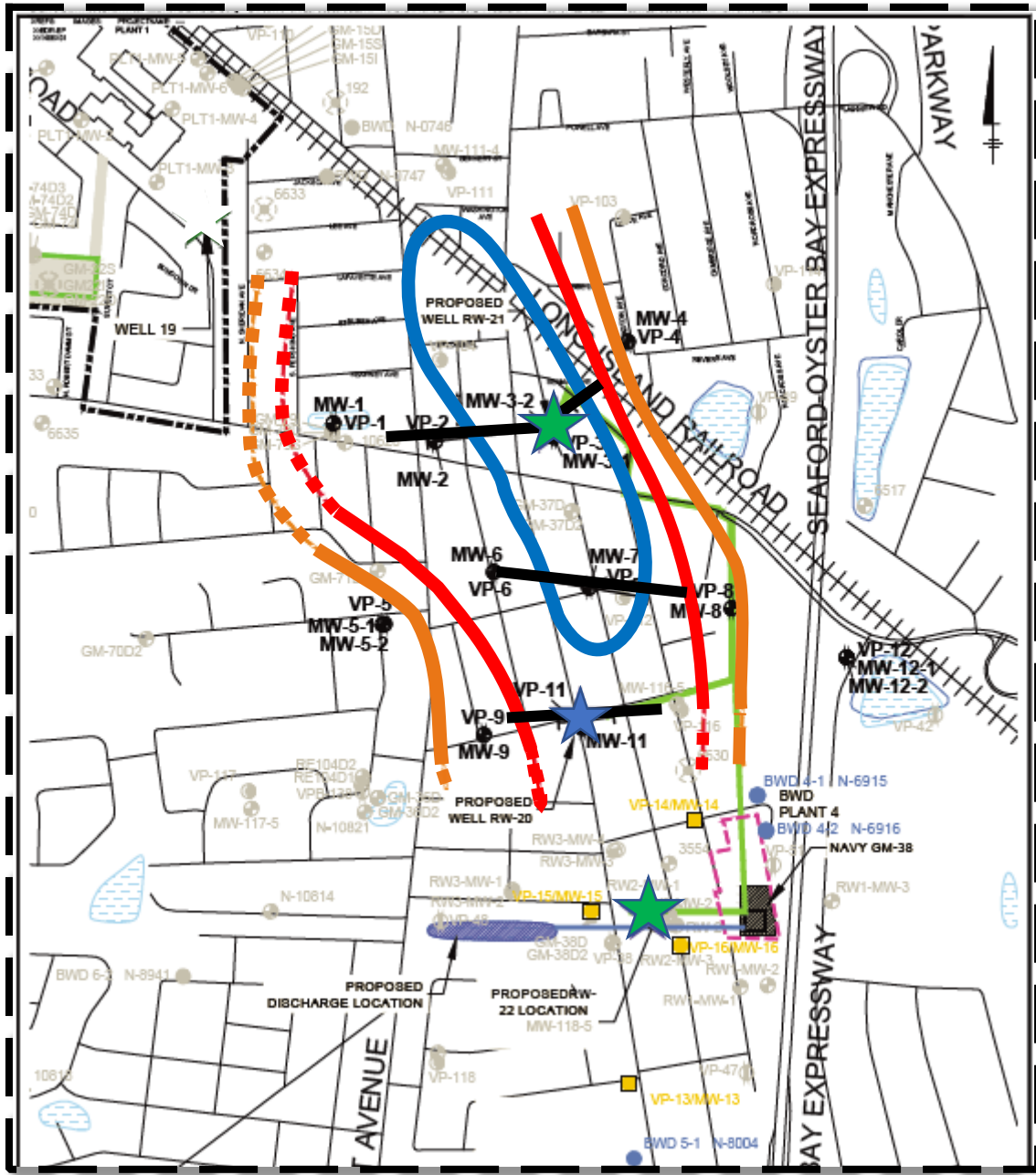
October 13, 2016







Overview – Why are we here?

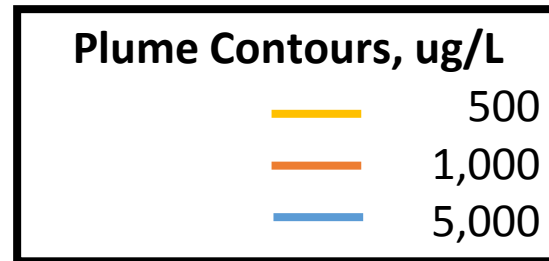
- **New York State has approved Northrop Grumman’s plan to clean up groundwater quality, which will benefit the community**
- **Project Overview**
- **Review of Schedule**
- **Response to Comments**
- **Project contact for more information**

***Northrop Grumman, New York State DEC and DOH,
and Nassau County DOH representatives
are here to answer your questions***



Project area

-  Width of Area of VOC Mass
-  Proposed Remedial Well
-  Approved Remedial Well
-  Approved Boring/Monitoring Well



Key Elements of the Cleanup System

Three Groundwater Remedial Wells

- Below-ground vaults for wells installed to extract groundwater
- Groundwater pumped to treatment system in buried pipes

Treatment System

- Removes contamination from the groundwater
- Includes water and air treatment, and other required equipment

Discharge Pipe

- Clean water from treatment system pumped to new recharge basin near Arthur Avenue or to the existing basin on Arthur Avenue

Project Overview



NYSDEC- approved, TOB permitted well



NYSDEC-approved, TOB permit-pending well



New Treatment Building



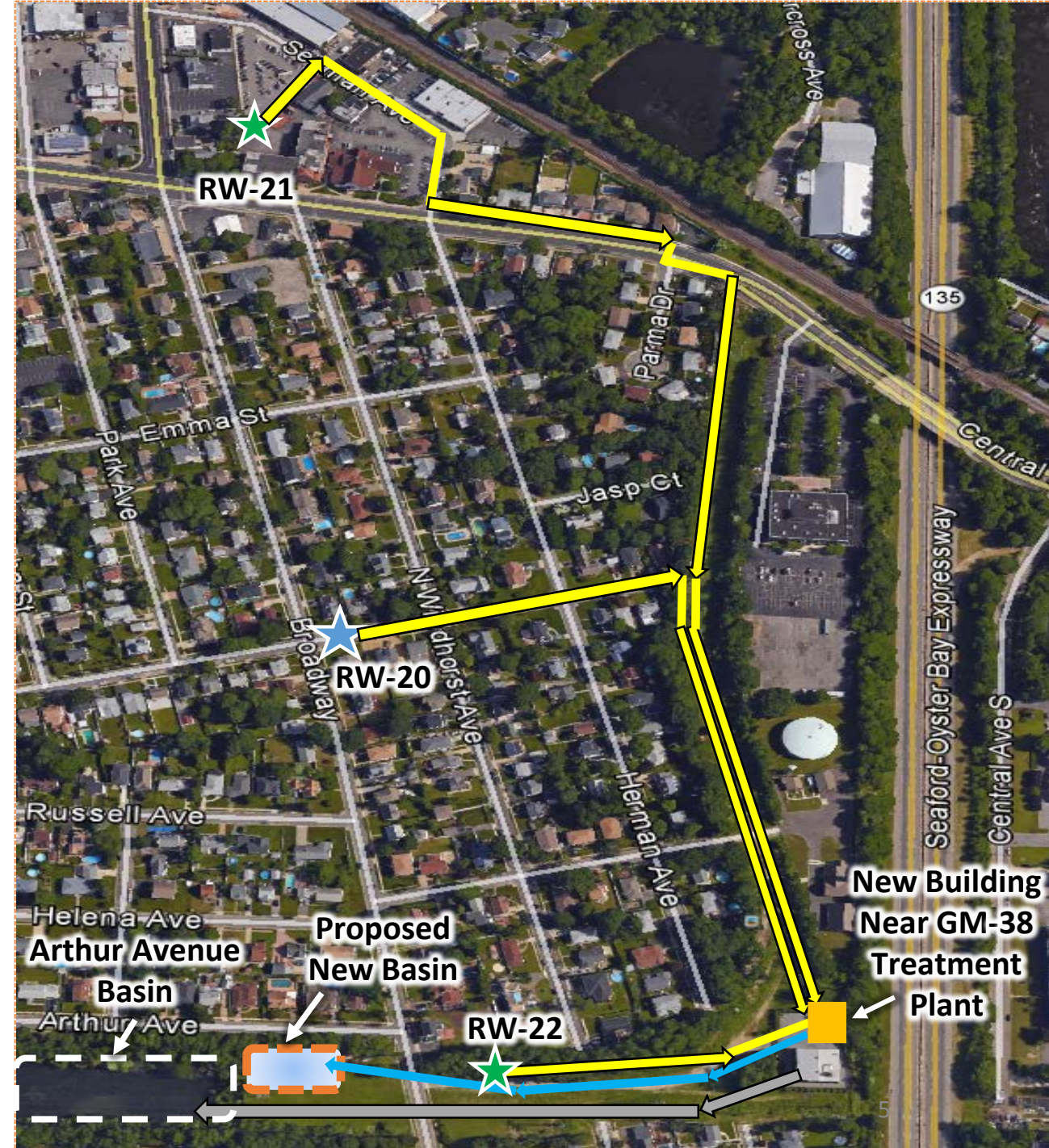
New buried treated water line and flow direction



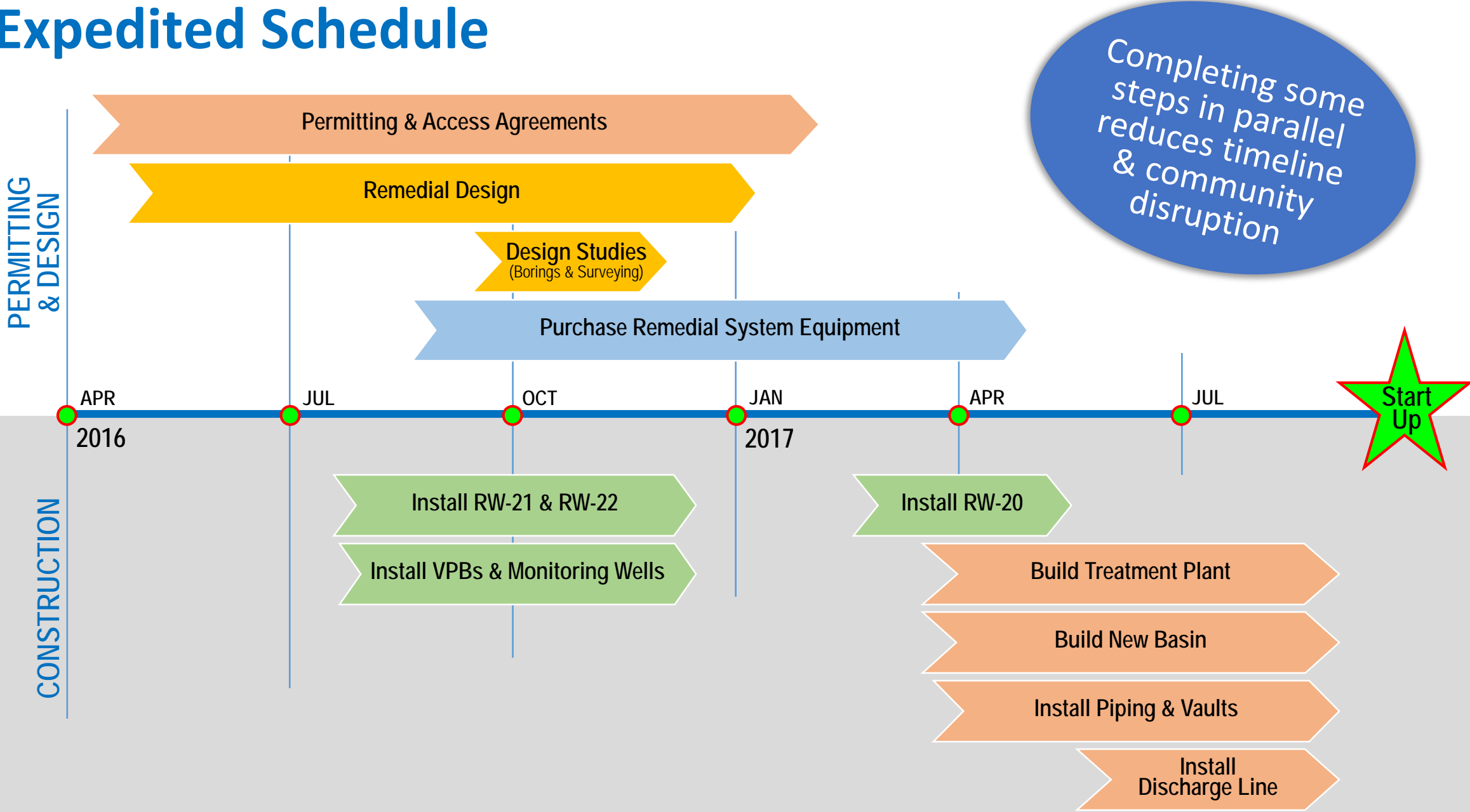
New buried pipe location



Existing Navy GM-38 buried treated water line and flow direction



Expedited Schedule



Water won't be pumped through system until Start-Up!

Summary of Comment Topics

RW-20

- Safety and Security
- Temporary Power, Plans to Mitigate Noise, Dust, and Vibration
- Site Restoration
- Engagement with Bethpage School District transportation officials

Basins

- Capacity
- Maintenance Activities

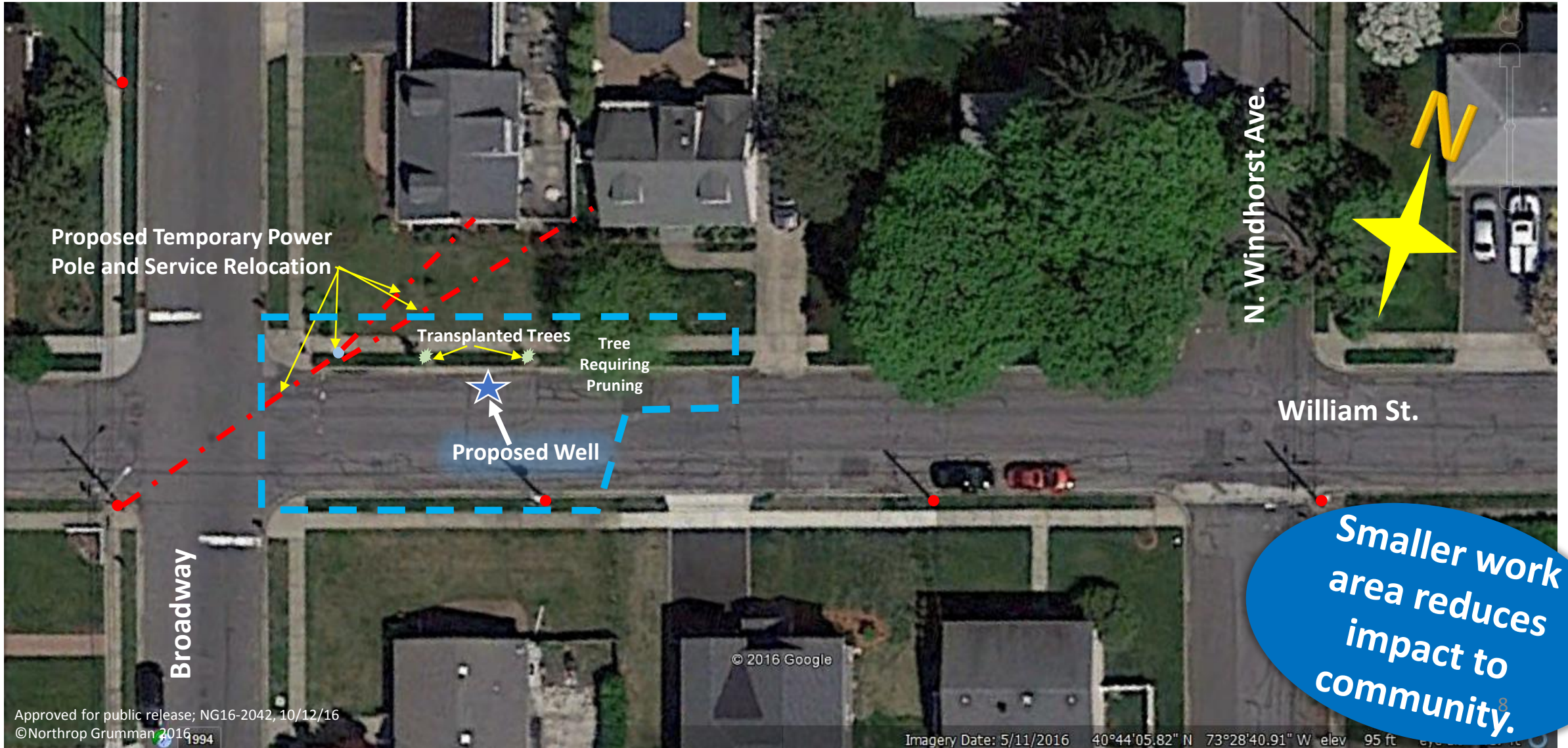
Treatment System

- Source of Electric Power
- Vault Excavation/Installation Method
- Utilities
- Coordination for Use of Municipal Lot near St. Martin of Tours
- Site Restoration

Re-Configuration of RW-20 Work Zone

We reduced the work zone and relocated well on to William Street.

This solution no longer blocks traffic on Broadway, but requires an additional 4 weeks.

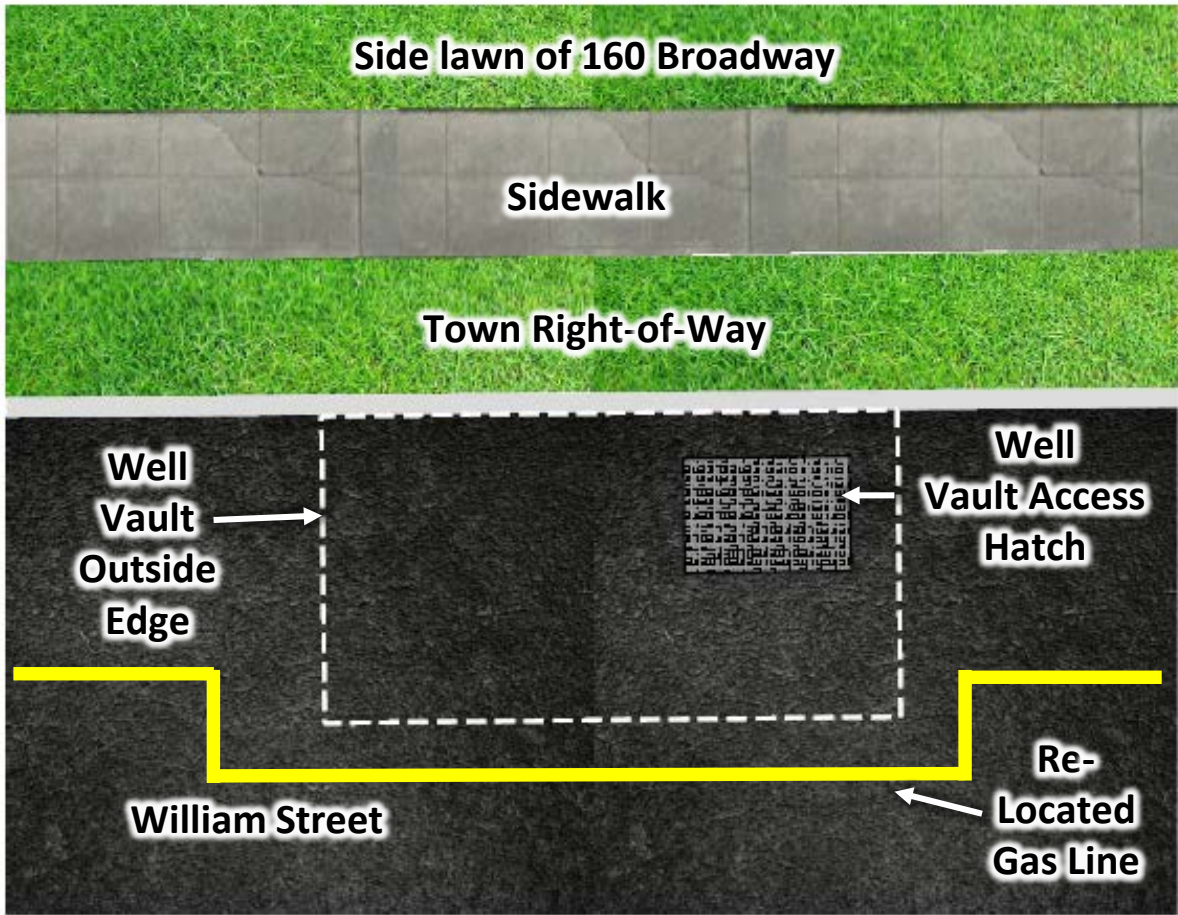


New RW-20 Well and Vault Location



RECOVERY WELL VAULT RW-20 - PARTIAL PLAN VIEW

0 10 20
APPROXIMATE SCALE IN FEET



RECOVERY WELL VAULT RW-20 - PARTIAL PLAN VIEW

0 2 4
APPROXIMATE SCALE IN FEET

Safety, Security, Controls, Work Hours, Engagement

Our plan includes health, safety and security measures to protect our community and our site workers

- **SAFETY** work materials will be contained; excess materials removed each day
- **SECURITY** for workers and residents throughout the project (including while school in session)
- **CONTROLS** minimize inconvenience to residents and businesses
- **WORK HOURS** are done in accordance with town code.
- **COMMUNITY ENGAGEMENT** open door policy with residents, officials

All work is coordinated with NYSDEC, State and County DOHs, and Town of Oyster Bay

Established bi-weekly project review meetings with NY State and Town experts

Goal: Expedited Schedule to Reduce Neighborhood Impact



Contact Information

*If you have
questions or
concerns, please
contact these New
York State project
representatives:*

Mr. Steven Scharf, P.E.

Project Manager

NYSDEC

Main Office: (518) 402-9620, Ext 3.

E-mail: steven.scharf@dec.ny.gov

Mr. William Fonda

Citizen Participation Specialist

NYSDEC Public Affairs & Education

Main Office: (631) 444-0347

E-mail: Bill.Fonda@dec.ny.gov

Mr. Steven Karpinski

NYS Department of Health

Main Office: (518) 402-7853

E-mail: steven.karpinski@health.ny.gov



Contact Information

*If you wish to
contact Northrop
Grumman directly,
please contact:*

Ms. Dianne Baumert-Moyik

Communications

Northrop Grumman

Cell Phone: (516) 754-2645

E-mail: Dianne.Baumert-Moyik@ngc.com

*Please sign the attendance sheet with
your email and phone number as you
leave, so that we can provide you with
updates on project status.*

Thank You

Please pick up a fact sheet as you leave