

From: [Ennis, Gerard](#)
To: [Taylor, Maryanne](#)
Cc: [Pelton, Jason M \(DEC\)](#); [O'Rourke, Daniel](#); [Frantz, Aaron](#)
Subject: RE: Recharge Basin Question
Date: Wednesday, September 15, 2021 1:53:13 PM
Attachments: [image002.png](#)
[image003.png](#)
[image004.png](#)
[NC Basin 253.pdf](#)
[NC Basin 276.pdf](#)
[NC Basin 185.pdf](#)
[NC Basin 182.pdf](#)
[NC Basin 335.pdf](#)

ATTENTION: This email came from an external source. Do not open attachments or click on links from unknown senders or unexpected emails.

Good afternoon Mary Anne/Jason,

Following your request for information on several Nassau County Recharge basins (146, 182, 185, 276, 253, 317, 335), I would like to provide some preliminary data as it relates to basin construction, capacity and available volume. A site visit was made to each location in early spring of 2021. Basin maps/details have been attached where available. For reference, the definitions for available volume vs. required volume used by NC are as follows:

Available Volume: The volume of water the basin will hold without infiltration or overflow.

Required Volume: Computed volume that a basin is required to hold based on design standards as applied to tributary area.

(area x runoff coefficient x 5/12 or 8/12) depending on whether or not basin has positive overflow to another system.

Basin #146

(s/o Jerusalem Ave; e/o SOB; adjacent to Washington Ave Park)

Records do not include calculations for volume and capacity. It should be noted that the basin was dry at the time of the visit.

Basin #182

(e/s Hicksville Road; w/o Pasture Lane, Massapequa)

Available Volume: 112,000ft³

Required Volume: 125,000ft³

The basin is slightly undersized based on the design calculations but was dry at the time of the visit.

Basin #185

(Rt. 107, Massapequa)

Available Volume: 23,100ft³

Required Volume: 25,485ft³

Basin was dry at the time of the visit.

Basin #253

(Queens Ave & Dogwood Place, Massapequa)

Available Volume: 69,000ft³

Required Volume: 76,910ft³

Slightly undersized by design but was mostly dry at time of visit.

Basin #276

(e/s Rt. 107)

Available Volume: 197,000ft³

Required Volume: 182,000ft³

Some available capacity by design and was dry at time of visit.

Basin #317

(w/s Seamans Neck Rd; n/o Southern State Parkway)

Available Volume: 44,000ft³

Required Volume: 58,000ft³

Slightly undersized but was dry at time of visit.

Basin #335

(e/s Seamans Neck Road; s/o Bayberry Lane, Massapequa)

Do not have design records for volume/capacity.

Basin was dry at time of visit.

Please let me know if you have any questions regarding this information. As previously mentioned, I would be happy to meet with you at any of the locations in order to walkthrough and discuss options. Let me know what would work best for you.

Regards,

jerry

From: Taylor, Maryanne <TaylorMB@cdmsmith.com>

Sent: Tuesday, September 14, 2021 10:06 AM

To: Ennis, Gerard <gennis@nassaucountyny.gov>

Cc: Pelton, Jason M (DEC) <jason.pelton@dec.ny.gov>; O'Rourke, Daniel <ORourkeDE@cdmsmith.com>; Frantz, Aaron <FrantzAR@cdmsmith.com>

Subject: RE: Recharge Basin Question

Attention: This email came from an external source. Do not open attachments or click on links from unknown senders or unexpected emails.

Good morning Jerry –

Am sure it's been a busy summer; we're wondering if you have had any chance to assemble the information on the recharge basin capacity/performance that you and Jason have discussed? As we start to assess the potential to recharge treated effluent we'd really appreciate your assistance –

Thank you!

Mary Anne

From: Taylor, Maryanne
Sent: Tuesday, August 10, 2021 7:43 AM
To: Pelton, Jason M (DEC) <jason.pelton@dec.ny.gov>; Ennis, Gerard (NASSAU) <gennis@nassaucountyny.gov>; O'Rourke, Daniel <ORourkeDE@cdmsmith.com>; Frantz, Aaron <FrantzAR@cdmsmith.com>
Subject: RE: Recharge Basin Question

Thank you Jerry & Jason –

After reviewing the basin information, we would appreciate the opportunity for site visits, thank you! I've done drive-bys of a few, but walkthroughs would be much better. Am copying Dan O'Rourke and Aaron Frantz of the team who will be leading the recharge basin assessment.

Thank you!

Mary Anne

From: Pelton, Jason M (DEC) <jason.pelton@dec.ny.gov>
Sent: Tuesday, August 10, 2021 6:19 AM
To: Ennis, Gerard (NASSAU) <gennis@nassaucountyny.gov>
Cc: Taylor, Maryanne <TaylorMB@cdmsmith.com>
Subject: RE: Recharge Basin Question

Jerry:

Thanks for the quick response.

I have cc'd Mary Anne Taylor with CDM to answer the question regarding basin-specific site visits. I would say that would be very helpful, but will let Mary Anne respond.

Thanks again for your help Jerry.

Jason

Jason Pelton, P.G.

Project Manager, Division of Environmental Remediation

New York State Department of Environmental Conservation

625 Broadway, Albany, NY 12233

P: (518) 402-9478 | C: (518) 669-0424 | F: (518) 402-9773 | jason.pelton@dec.ny.gov

www.dec.ny.gov |  |  | 



From: Ennis, Gerard <gennis@nassaucountyny.gov>

Sent: Friday, August 6, 2021 8:29 AM

To: Pelton, Jason M (DEC) <jason.pelton@dec.ny.gov>

Subject: RE: Recharge Basin Question

ATTENTION: This email came from an external source. Do not open attachments or click on links from unknown senders or unexpected emails.

Good morning Jason.

I hope you are doing well.

I will get you the best preliminary info on the basins that you inquired about asap. Sorry for the delay.

If it would be helpful, I could make time to meet you or the contractor at any of the locations to do a walkthrough to discuss.

Regards,

jerry

From: Pelton, Jason M (DEC) <jason.pelton@dec.ny.gov>

Sent: Thursday, August 5, 2021 9:56 AM

To: Ennis, Gerard <gennis@nassaucountyny.gov>

Subject: RE: Recharge Basin Question

Attention: This email came from an external source. Do not open attachments or click on links from unknown senders or unexpected emails.

Gerry:

Hope all has been well. Still no major rush, but I wanted to have our State Standby Contractor (CDM) begin assessing possible discharge options in the area of the Southern State Parkway.

Can you guys still provide us with some initial information on the recharge basins in this area?

Thanks, and call if easier to discuss.

Jason

Jason Pelton, P.G.

Project Manager, Division of Environmental Remediation

New York State Department of Environmental Conservation

625 Broadway, Albany, NY 12233

P: (518) 402-9478 | C: (518) 669-0424 | F: (518) 402-9773 | jason.pelton@dec.ny.gov

www.dec.ny.gov |  |  | 



From: Ennis, Gerard <gennis@nassaucountyny.gov>

Sent: Monday, March 1, 2021 1:47 PM

To: Pelton, Jason M (DEC) <jason.pelton@dec.ny.gov>

Subject: RE: Recharge Basin Question

ATTENTION: This email came from an external source. Do not open attachments or click on links from unknown senders or unexpected emails.

Hello Jason,

My apologies for the delay. I will have something for you hopefully by weeks end.

I had Valerie Eagan from our office visit each of the basins just to do a visual on whether or not they were holding water and to do a check on if there were any obvious issues. We have some pictures also.

I also compiled some design information from our files related to available volume vs. required volume in order to get a sense of what they may be able to handle. I will put it together and get it over to you so that we can discuss.

I intended to have it done sooner but got sidetracked by a few other things.

Regards,

jerry

From: Pelton, Jason M (DEC) <jason.pelton@dec.ny.gov>
Sent: Monday, March 1, 2021 1:38 PM
To: Ennis, Gerard <gennis@nassaucountyny.gov>
Subject: RE: Recharge Basin Question

Attention: This email came from an external source. Do not open attachments or click on links from unknown senders or unexpected emails.

Jerry:

I just wanted to check in to see if you had a chance to look into the recharge basins down by the Southern State Parkway that we were considering using for groundwater extraction and treatment systems?

I know you guys are incredibly busy, so if you have not had a chance to look into this, no worries. I just wanted to check in.

Thanks
Jason

Jason Pelton, P.G.
Project Manager, Division of Environmental Remediation

New York State Department of Environmental Conservation
625 Broadway, Albany, NY 12233
P: (518) 402-9478 | C: (518) 669-0424 | F: (518) 402-9773 | jason.pelton@dec.ny.gov
www.dec.ny.gov |  |  | 



From: Ennis, Gerard <gennis@nassaucountyny.gov>
Sent: Thursday, January 7, 2021 1:49 PM
To: Pelton, Jason M (DEC) <jason.pelton@dec.ny.gov>
Cc: Flaherty, Michael (NASSAU) <mflaherty@nassaucountyny.gov>
Subject: RE: Recharge Basin Question

ATTENTION: This email came from an external source. Do not open attachments or click on links from unknown senders or unexpected emails.

No problem,

I will gather some preliminary data/history on each and we can discuss.

jerry

From: Pelton, Jason M (DEC) <jason.pelton@dec.ny.gov>
Sent: Thursday, January 7, 2021 1:31 PM
To: Ennis, Gerard <gennis@nassaucountyny.gov>
Cc: Flaherty, Michael <mflaherty@nassaucountyny.gov>
Subject: RE: Recharge Basin Question

Attention: This email came from an external source. Do not open attachments or click on links from unknown senders or unexpected emails.

Jerry:

Thanks for the quick response.

Please see the attached figure.

If readily available, we would like to learn a little about performance and capacity at the following recharge basins:

1. N-00146
2. N-00276
3. ST-0133 (I believe this is a NYS basin so you may not have any information on this one)
4. N00185
5. N-00182
6. N-00253
7. N-00317
8. N-00335

Thanks, and please let me know if this too long of a list or if this is easier to simply to discuss during a call.

Jason

Jason Pelton, P.G.

Project Manager, Division of Environmental Remediation

New York State Department of Environmental Conservation

625 Broadway, Albany, NY 12233

P: (518) 402-9478 | C: (518) 669-0424 | F: (518) 402-9773 | jason.pelton@dec.ny.gov

www.dec.ny.gov |  |  | 



From: Ennis, Gerard <gennis@nassaucountyny.gov>

Sent: Thursday, January 07, 2021 1:06 PM
To: Pelton, Jason M (DEC) <jason.pelton@dec.ny.gov>
Cc: Flaherty, Michael (NASSAU) <mflaherty@nassaucountyny.gov>
Subject: RE: Recharge Basin Question

ATTENTION: This email came from an external source. Do not open attachments or click on links from unknown senders or unexpected emails.

Hello Jason,

I hope this message finds you well.

Please feel free to send me what information you have and I will research our basin files as far as condition and available capacity.

Regards,

jerry

From: Pelton, Jason M (DEC) <jason.pelton@dec.ny.gov>
Sent: Thursday, January 7, 2021 12:56 PM
To: Ennis, Gerard <gennis@nassaucountyny.gov>
Subject: Recharge Basin Question

Attention: This email came from an external source. Do not open attachments or click on links from unknown senders or unexpected emails.

Jerry:

Hope all has been well and you had a Happy Holiday.

We are taking some preliminary steps toward groundwater extraction and treatment in a specific area near the Southern State Parkway.

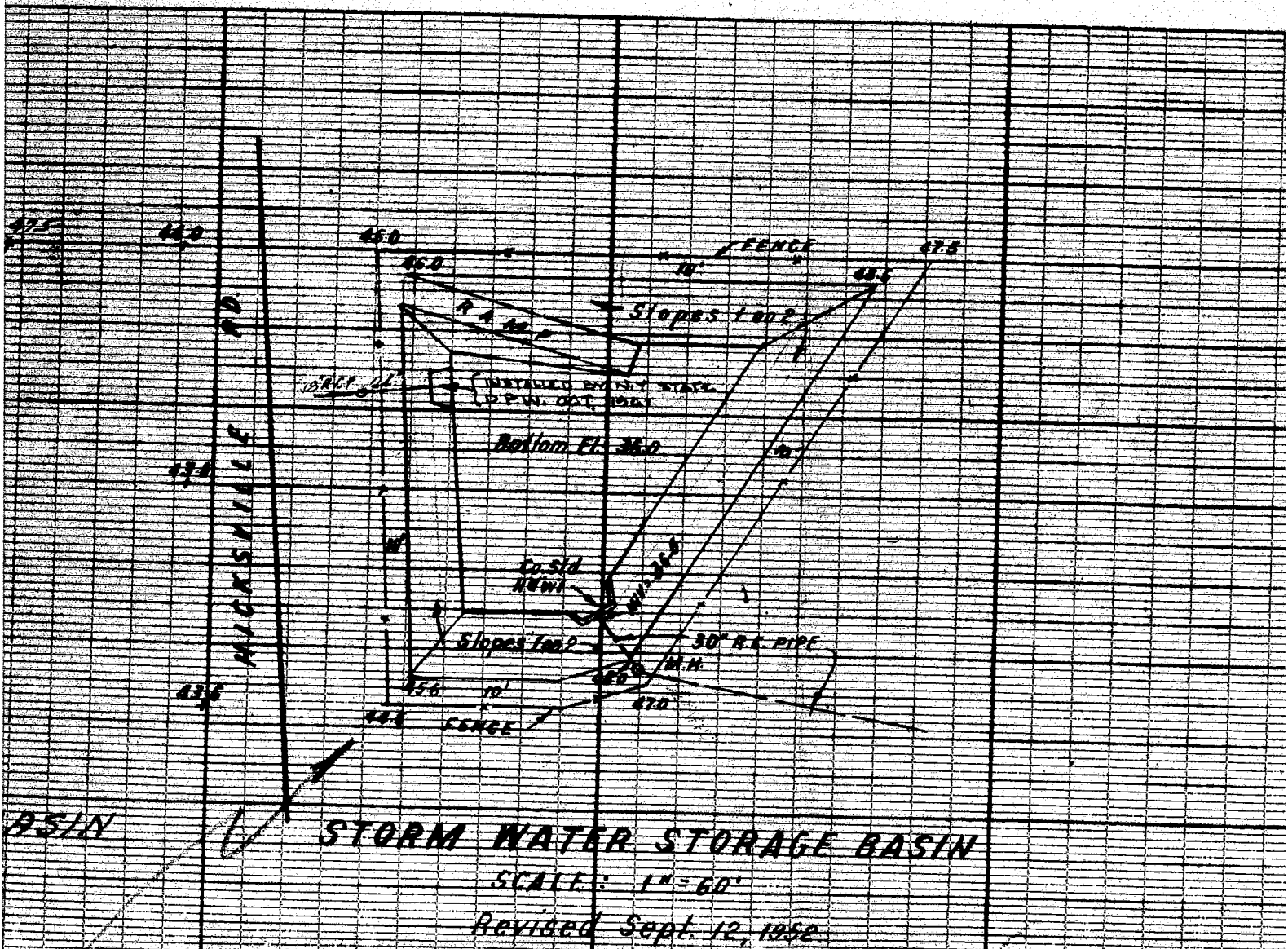
If I send you a figure along with a list of nearby recharge basins, is there any chance you could just give me an initial idea on how these basins already perform and if you think they may have a little more capacity to manage treated water?

Thanks, and call or email with any questions,
Jason

Jason Pelton, P.G.
Project Manager, Division of Environmental Remediation

New York State Department of Environmental Conservation
625 Broadway, Albany, NY 12233
P: (518) 402-9478 | C: (518) 669-0424 | F: (518) 402-9773 | jason.pelton@dec.ny.gov

Basin #182



4.6
771

Inv. 38.1

HICKSVILLE

SEE
DETAIL

2LE

144.95

WICKS

ALAN

SEC. 1

PLACE
AVENUE

Exist. C.B.

M.H. (G) Type 3
Sta. 16+97 on Wicks
Offset - 25' N of E
Inv. N.E.S. - 36.7
Inv. E.P.W. - 37.7

Exist. Pipe 2

NOTE: BREAK THROUGH EXISTING
PIPE BETWEEN C.B.'S AND CONNECT
TO MANHOLE (G).

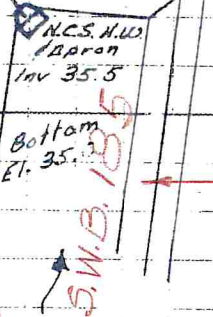
10' Drain Easement Acq. by Res. 37- 2-8-54.
N.C.D.P.W. File # 1026-10.

30'-24" R.C.P. slotted
@ 0.60%

M.H. (H) Type 3
Inv. 35.7 N.E.S.

14'-30" R.C.P. A
@ 0.60%
Slotted
10' Drainage Easement

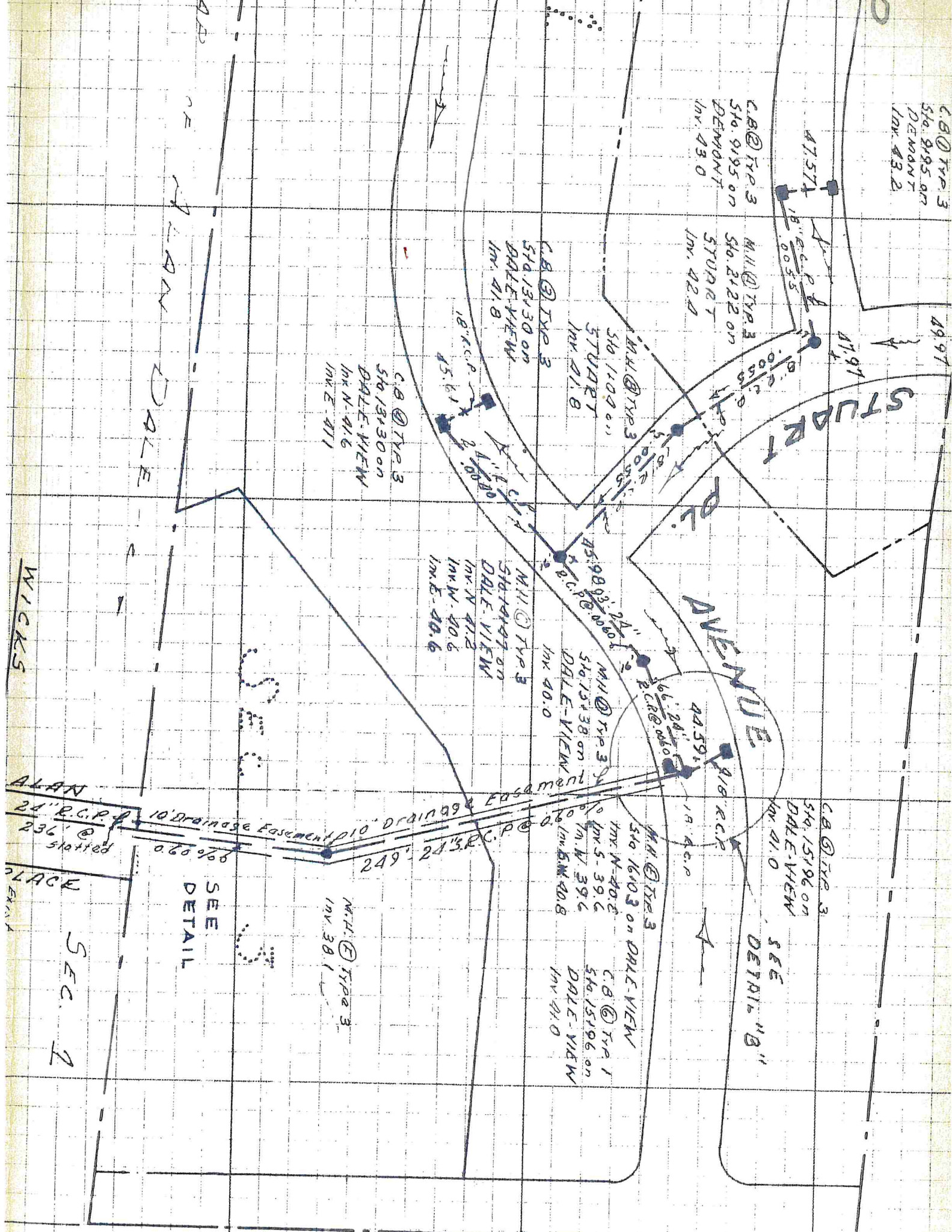
Basin # 185



Storm Water Basin shown on
Map of Alan Dale
N.C.D.P.W. File # 3107-4

ALAN-DALE
SUMP

Drainage relief from S.W. Basin southerly
shown on Section Plan, Map of Culvert Major
N.C.D.P.W. File # 3120-1.



C.B. @ TYP 3
 540.2195 on
 DEMONT
 Inv. 43.2

C.B. @ TYP 3
 540.9195 on
 DEMONT
 Inv. 43.0

M.H. @ TYP 3
 540.2122 on
 STURDY
 Inv. 42.2

M.H. @ TYP 3
 540.1100 on
 STURDY
 Inv. 41.8

C.B. @ TYP 3
 540.1313 on
 DALE-VIEW
 Inv. 41.8

C.B. @ TYP 3
 540.1313 on
 DALE-VIEW
 Inv. N. 41.6
 Inv. E. 41.1

M.H. @ TYP 3
 STURDY on
 DALE-VIEW
 Inv. N. 41.8
 Inv. W. 40.6
 Inv. E. 40.6

M.H. @ TYP 3
 540.1313 on
 DALE-VIEW
 Inv. 40.0

M.H. @ TYP 3
 540.1610 on
 DALE-VIEW
 Inv. N. 40.2
 Inv. W. 39.6
 Inv. E. 40.8

C.B. @ TYP 3
 540.15196 on
 DALE-VIEW
 Inv. 41.0

C.B. @ TYP 1
 540.15196 on
 DALE-VIEW
 Inv. 41.0

M.H. @ TYP 3
 Inv. 38.1

SEE
 DETAIL

SEE
 DETAIL "B"

ALAN
 24" R.C.P. @
 236' @
 slotted

PLACE
 EXH. A

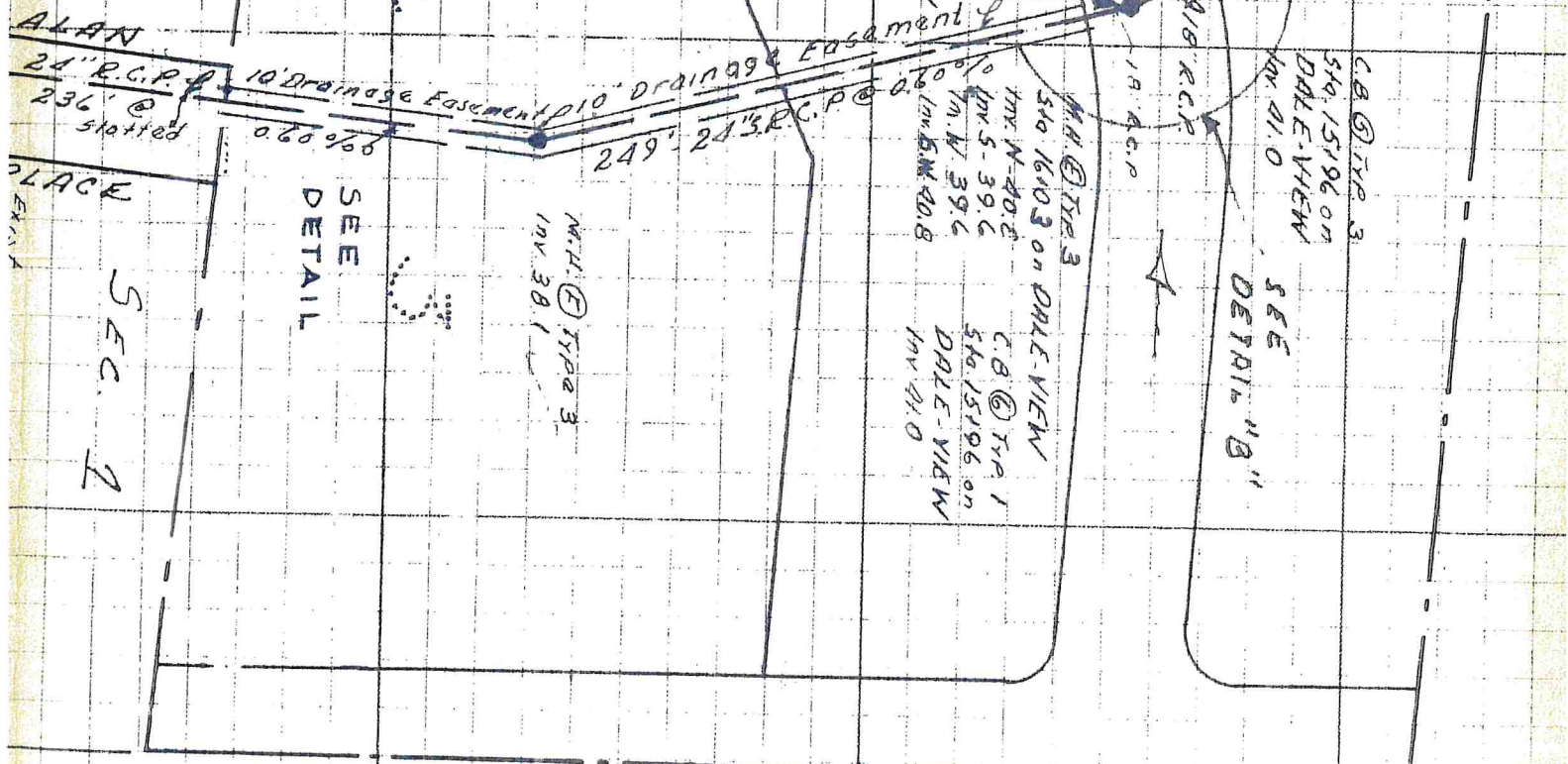
SEC. 2

WICKS

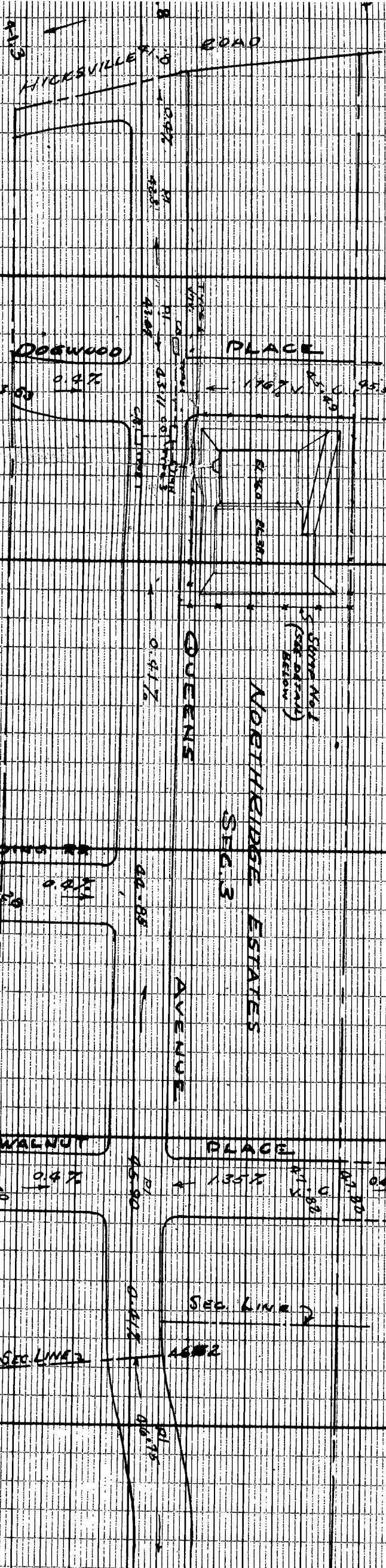
NE
 DALE

SEC. 1

SEC. 2

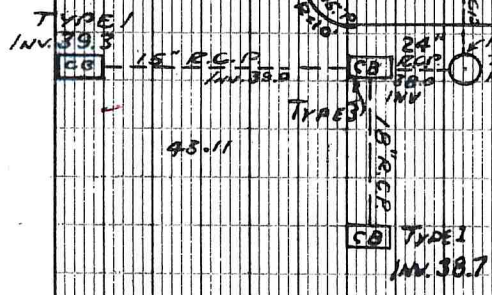
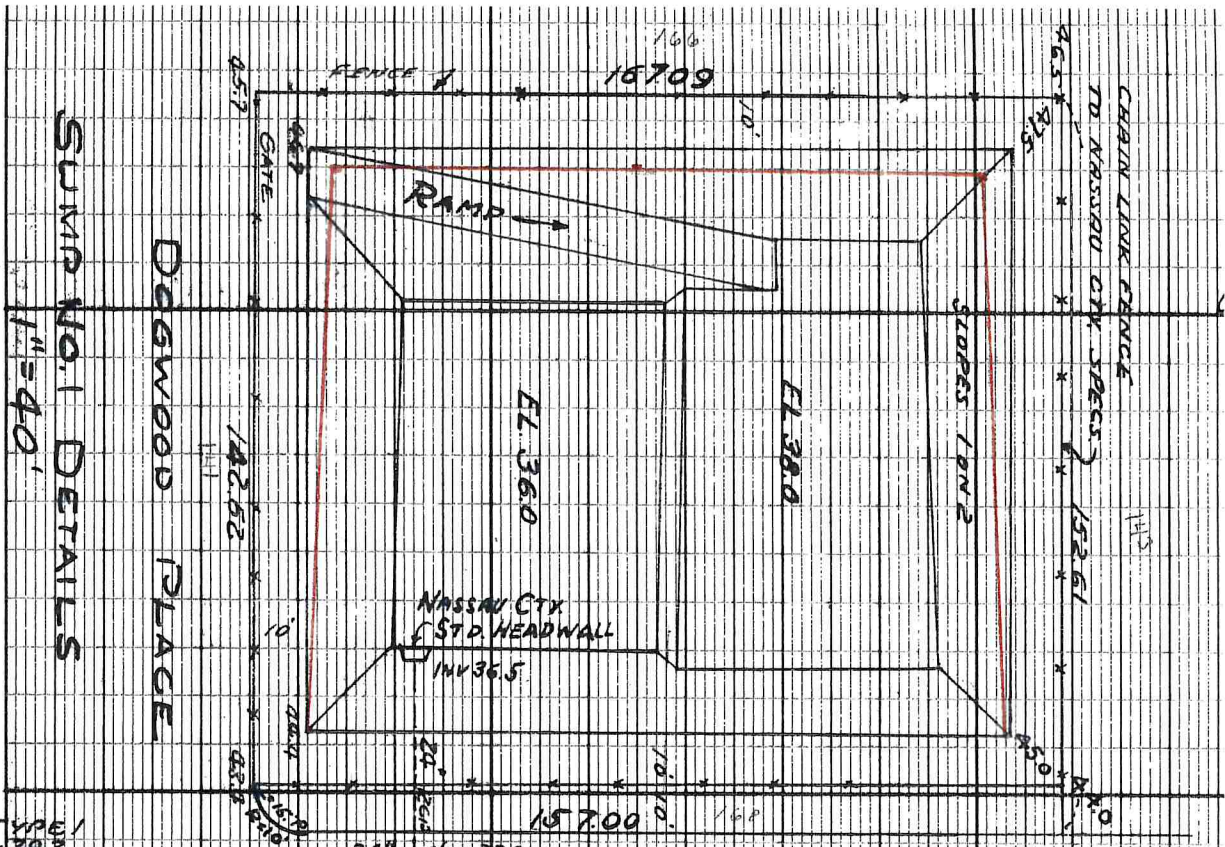


NORTHRIDGE EST SECT 1



PROPOSED MAP BY MISSOURI REGISTER

PLAN
1"=100'



QUEENS AVE.

