

Steven Scharf - Re: Fwd: Follow on to the PRP discussion

From: Bob Corcoran
To: Swartwout, John
Date: 12/2/2013 3:05 PM
Subject: Re: Fwd: Follow on to the PRP discussion
CC: Scharf, Steven
Attachments: Bethpage_EDR_dual_May18_Side_List.pdf; Binder1.pdf

Sure,

I looked at a lot of data from the Grumman and Navy sites. The two "hot" spots for PCE are VP-112 (190 ppb @ 240 ft) and VP-116 (>600 ppb @ 240 ft). These vertical profile borings are located on the far eastern plume line, near Bethpage Water District Plant 4. The plume flows mostly South to SSE.

I personally visited the four dry cleaners inside the yellow band (Grumman's PRP map, attached) in July 2012.

#5- Bethpage Best Cleaners,
#21- Key Cleaners,
#28 - Love Cleaners and
#45- Tahoe Cleaners.

I don't feel that either #45- Tahoe Cleaners or #21- Key Cleaners could be contributing to the plume because they are located too far to the west.

#28 - Love Cleaners and #5- Bethpage Best Cleaners are better candidates based on location. Love Cleaners is no longer operating and the space is now a laundromat. Some records searching revealed that there were formerly three dry cleaners in the same plaza as Love Cleaners. The other two being Son-Lew Laundry and Capris Cleaners. The plaza has been rebuilt in recent years and the exact locations of the cleaners is not clear. A King Cullen grocery store now anchors the plaza.

Bethpage Best continues to operate one block east of the former Love Cleaners. Bethpage Best Cleaners (BBC) has an active SSDS, due to vapors impacting the restaurant next door, but no GW contamination was found by Nassau County.

I drew up a sampling plan consisting of 11 vertical profile borings, which would hopefully evaluate groundwater emanating from the Love Cleaners plaza (Son-Lew & Capris) as well as BBC.

With the Grumman/Navy data overlain on my map, VP-111 lies downgradient of the plaza and upgradient of my proposed investigation. VP-111 data indicates that the GW is clean until 250 ft BGS, then a band of PCE from 270-411 ft BGS (max PCE was 48PPB). There is also a band of TCE from 260-616 ft BGS, with max TCE of 9100 PPB @ 450 ft.

The attached map entitled "Binder1" shows my proposed sampling locations as well as VOC data for several nearby vertical profile borings.

Conclusion:

The PCE detected in VP-112 and VP-116 is both shallower and more concentrated than upgradient detections. The vertical profiles north of the LIR are clean til 250-300 ft BGS. VP-104 (south of LIR is contaminated with TCE

at 120 ft and PCE does not show up until 480 ft.) Data from VP-111 and VP-104 seems to exonerate the suspected dry cleaners.

There appears to be a source somewhere south of the LIR.

Robert Corcoran, P.E.

Environmental Engineer 2
NYS DEC
Div. of Environmental Remediation
Remedial Bureau A, Section C
625 Broadway, 12th Floor
Albany, NY 12233-7015
Phone: (518) 402-9620
Fax: (518) 402-9022
rkcorcor@gw.dec.state.ny.us

>>> John Swartwout 12/2/2013 1:29 PM >>>

Bob-

I know you took a look at some dry cleaners in the vicinity of the Grumman plume. Can you provide a brief write-up on which ones you took a look at and what you found?

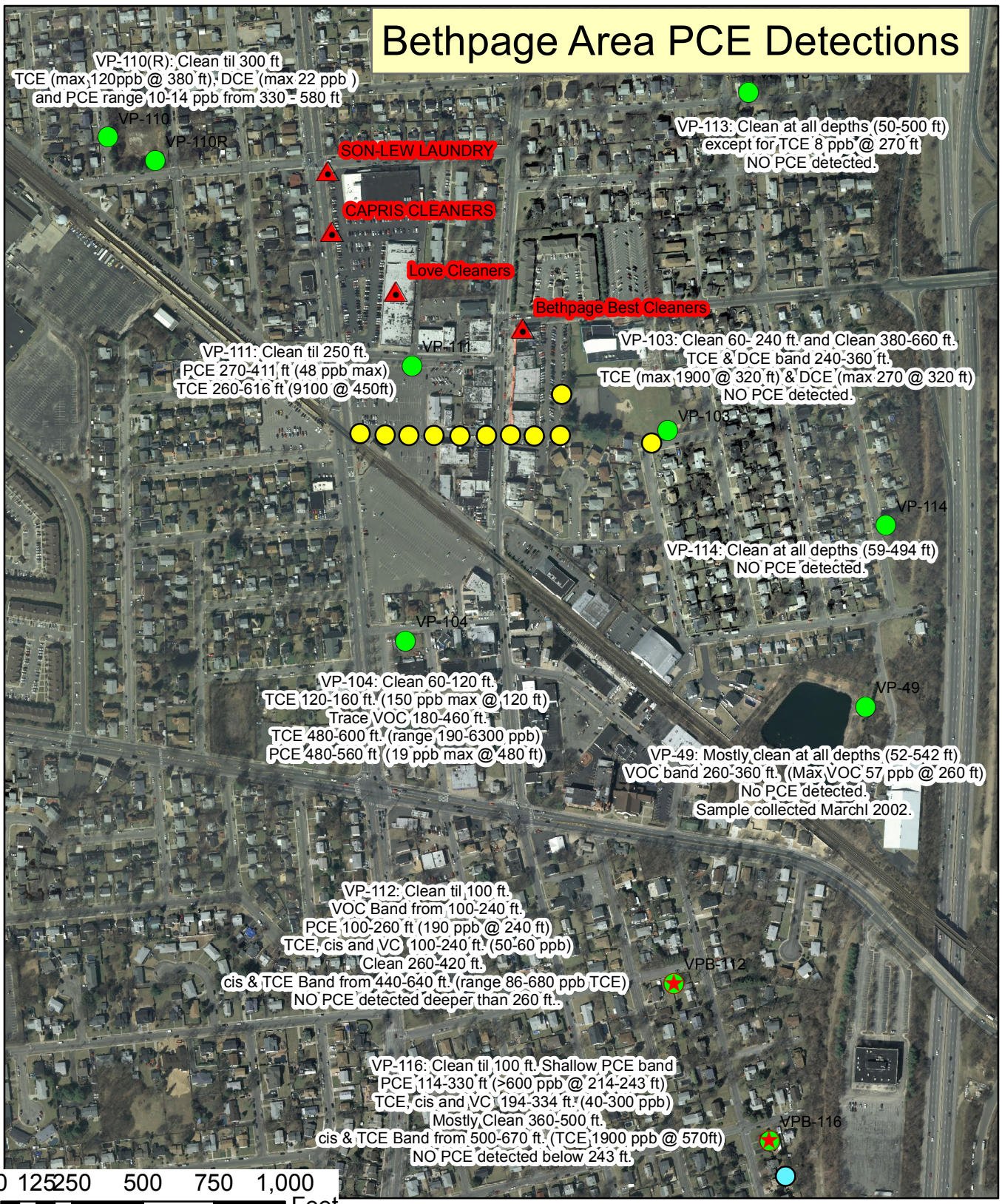
John

>>> Jim Harrington 12/2/2013 12:46 PM >>>

Ben, Rosalie - Grumman is asking for a status report on looking for other RPs. You may remember that they sent in this map a year or so ago. It is a list of sites and spills in the area from the public website. I sparred with them a little back then because some are obviously not contributing to the plume. I don't think that we ever did a detailed technical analysis of every site. Can we just respond with some joint and several language? Jim H

Jim Harrington
Director, Remedial Bureau A Division of Environmental Remediation
518-402-9625

Bethpage Area PCE Detections



VP-110(R): Clean til 300 ft
TCE (max 120ppb @ 380 ft), DCE (max 22 ppb)
and PCE range 10-14 ppb from 330 - 580 ft

VP-113: Clean at all depths (50-500 ft)
except for TCE 8 ppb @ 270 ft
NO PCE detected.

SON-LEW LAUNDRY

CAPRIS CLEANERS

Love Cleaners

Bethpage Best Cleaners

VP-111: Clean til 250 ft.
PCE 270-411 ft (48 ppb max)
TCE 260-616 ft (9100 @ 450ft)

VP-103: Clean 60- 240 ft. and Clean 380-660 ft.
TCE & DCE band 240-360 ft.
TCE (max 1900 @ 320 ft) & DCE (max 270 @ 320 ft)
NO PCE detected.

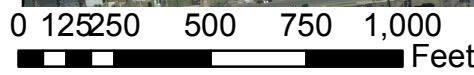
VP-114: Clean at all depths (59-494 ft)
NO PCE detected.

VP-104: Clean 60-120 ft.
TCE 120-160 ft. (150 ppb max @ 120 ft)
Trace VOC 180-460 ft.
TCE 480-600 ft. (range 190-6300 ppb)
PCE 480-560 ft. (19 ppb max @ 480 ft)

VP-49: Mostly clean at all depths (52-542 ft)
VOC band 260-360 ft. (Max VOC 57 ppb @ 260 ft)
No PCE detected.
Sample collected March 2002.

VP-112: Clean til 100 ft.
VOC Band from 100-240 ft.
PCE 100-260 ft (190 ppb @ 240 ft)
TCE, cis and VC 100-240 ft. (50-60 ppb)
Clean 260-420 ft.
cis & TCE Band from 440-640 ft. (range 86-680 ppb TCE)
NO PCE detected deeper than 260 ft.

VP-116: Clean til 100 ft. Shallow PCE band
PCE 114-330 ft (>600 ppb @ 214-243 ft)
TCE, cis and VC 194-334 ft. (40-300 ppb)
Mostly Clean 360-500 ft.
cis & TCE Band from 500-670 ft. (TCE 1900 ppb @ 570ft)
NO PCE detected below 243 ft.



Legend

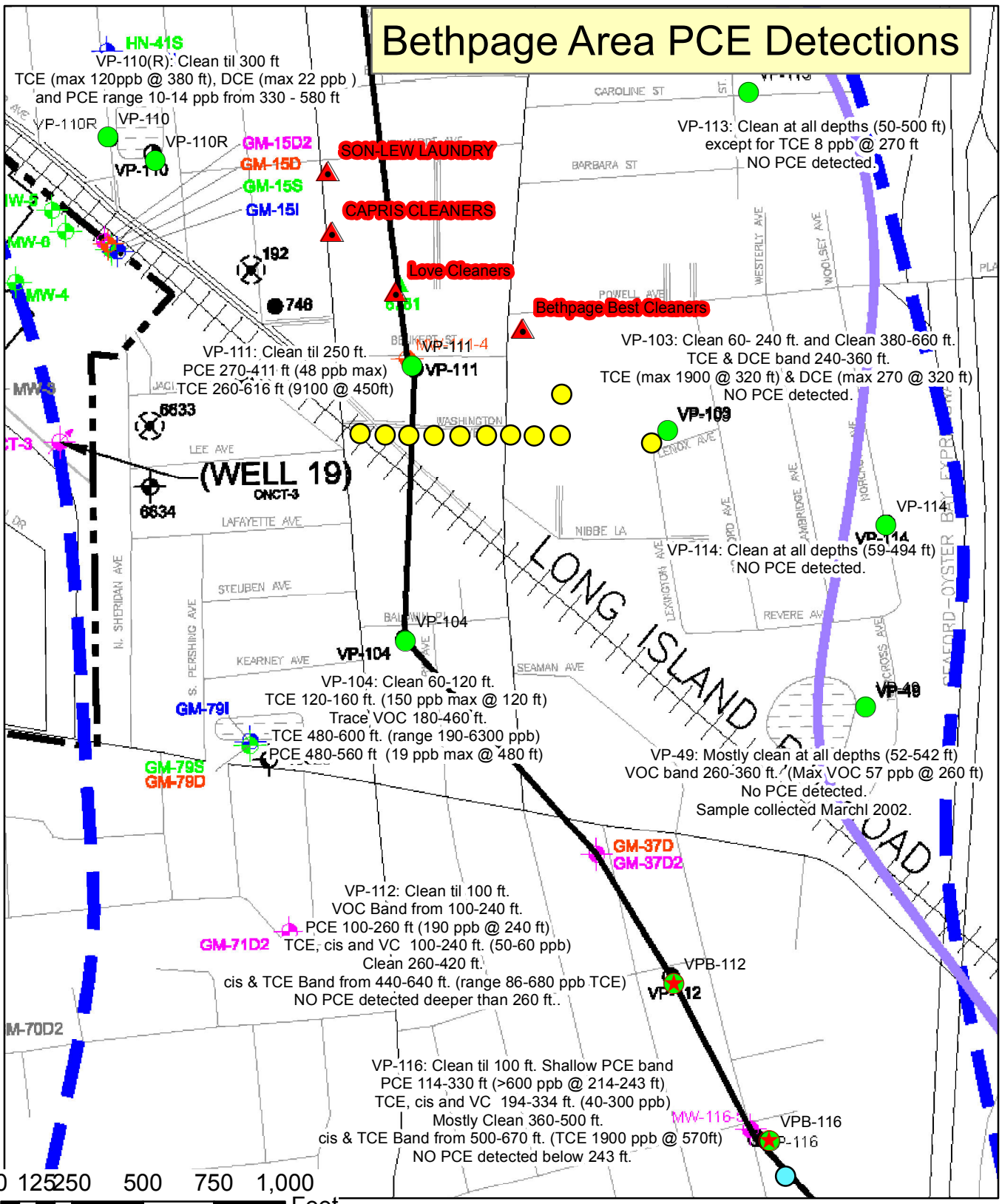
- ★ Bethpage_Area_PCE_Detections
- Bethpage_Area_VPBorings
- Proposed VPB Sample Locations
- ▲ Bethpage_Dry_Cleaners

Vertical profile borings in the vicinity of the dry cleaners does not indicate they are contributing to the local plume. VPB-111 seems to exonerate 3 of the four dry cleaners.

PCE contamination at VPB-112 and VPB-116 is shallow compared to other locations.

Bethpage Best Cleaners, which has had past PCE disposal and operates a SSDS, may deserve another look.

Bethpage Area PCE Detections



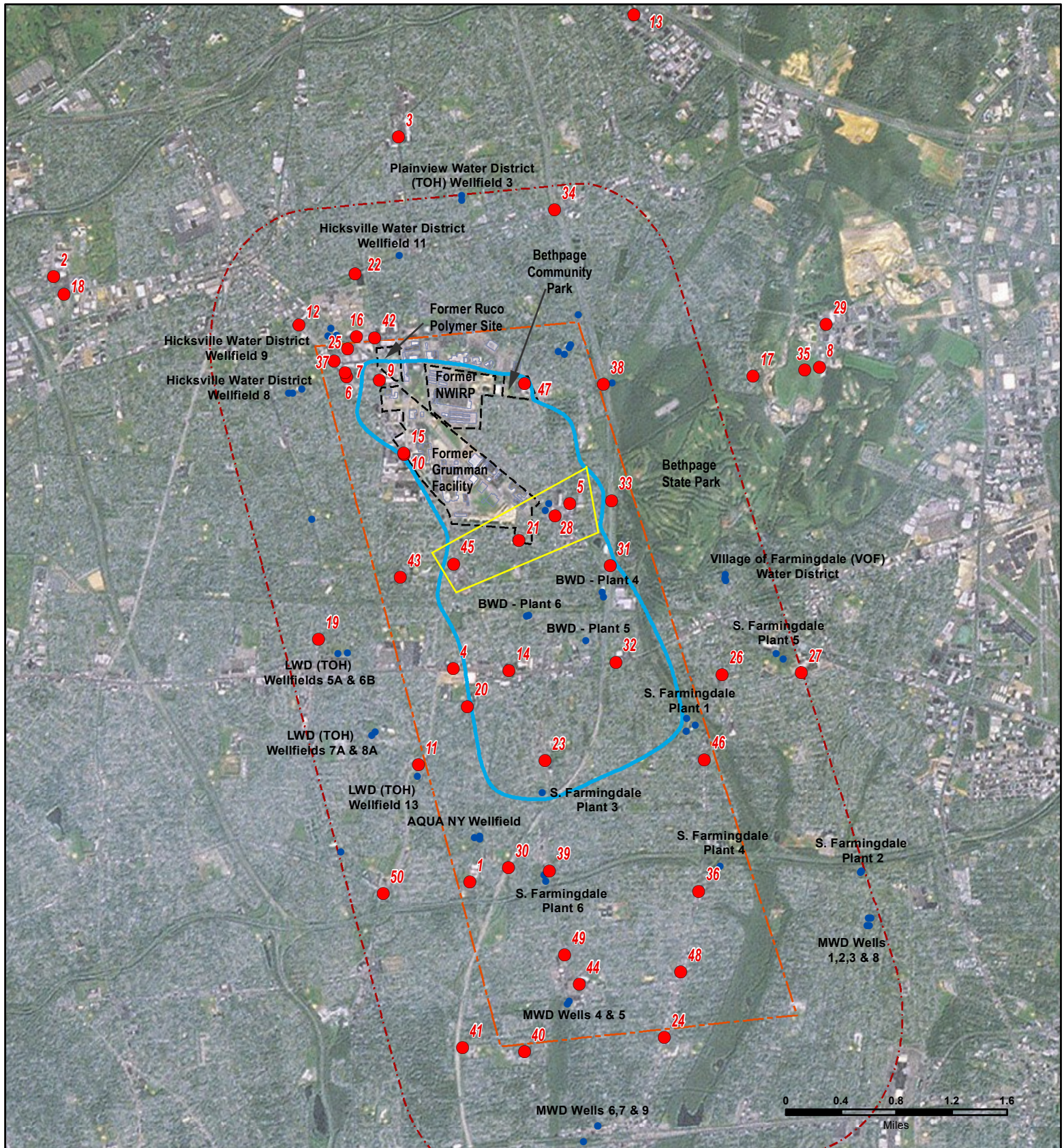
Legend

- ★ Bethpage_Area_PCE_Detections
- Bethpage_Area_VPBorings
- Proposed VPB Sample Locations
- ▲ Bethpage_Dry_Cleaners

Vertical profile borings in the vicinity of the dry cleaners does not indicate they are contributing to the local plume. VPB-111 seems to exonerate 3 of the four dry cleaners.

PCE contamination at VPB-112 and VPB-116 is shallow compared to other locations.

Bethpage Best Cleaners, which has had past PCE disposal and operates a SSDS, may deserve another look.



#	Site Name	#	Site Name	#	Site Name
1	821 AND 825 PROSPECT AVENUE	17	FIRE SERVICE ACADEMY	34	NYSDOT BIN 1037910
2	AIR TECHNIQUES, INC	18	GENERAL INSTRUMENT CORP	35	OLD BETHPAGE LANDFILL
3	AMERICAN DRIVE-IN CLEANERS	19	HARDER TREE SERVICE	36	PETER'S/LESTERS CLEANERS
4	AMERICAN DRIVE-IN CLEANERS	20	ISLAND TREES UFSD	37	R&J DRYCLEANERS
5	BETHPAGE BEST CLEANERS	21	KEY CLEANERS	38	ROUTE 135/BROADWAY NYSDOT-BIN # 1037899
6	BROADWAY PLAZA CLEANERS	22	KEYSPAN HICKSVILLE OPERATIONS CENTER	39	ROYAL CLEANERS
7	CINDYS CLEANERS	23	KHM/KAY/VALDA CLEANERS & TAILORS	40	SEAFORD MIDDLE SCHOOL
8	CLAREMONT POLYCHEMICAL	24	KLEENERS	41	SEAFORD SENIOR HIGH SCHOOL
9	CORAL GRAPHICS, INC. (NEW SOUTH RD)	25	KOSY SHACK	42	SERVO CORP. OF AMERICA
10	CORAL GRAPHICS, INC. (BROADWAY)	26	KPS GOWN CLEANERS	43	STEPHEN E KAROPCZYC SCHOOL
11	DEMETRI'S VALET/GEMINI DRY CLEANERS	27	LIBERTY INDUSTRIAL FINISHING	44	STEVE'S EXPRESS CLEANERS
12	DRY CLEAN CENTRAL	28	LOVE CLEANERS	45	TAHOE CLEANERS
13	EQUINE STELLAR CORP	29	NEW YORK PAVING	46	TOPS N TOWN CLEANERS
14	EXQUISITE DRIVE IN CLEANERS	30	NYSDOT-PEDESTRIAN BRIDGE/ RT 135 BIN # 1037820	47	TOWN OF OYSTER BAY FORMER SKATING RINK
15	F. C. PROPERTIES	31	NYSDOT - CENTRAL AVE. /RT. 135 BIN #1037860	48	VALUE CLEANERS
16	FEDERAL REFINING INC	32	NYSDOT BIN 1018119	49	WANG'S DRY CLEANERS
		33	NYSDOT BIN 1037880	50	WANTAGH CLEANERS

PRIVILEGED AND CONFIDENTIAL
 ATTORNEY/CLIENT COMMUNICATION
 AND/OR ATTORNEY WORK PRODUCT
 SUBJECT TO ATTORNEY-CLIENT PRIVILEGE