

Agenda for Restoration Advisory Board

Naval Weapons Industrial Reserve Plant Bethpage

Date: May 15, 2013

Time: 7:00 PM

Location: Community Room at the Ice Skating Center at Bethpage

- General overview – *Lora Fly, NAVFAC Mid Atlantic* ✓
- Distribution of minutes – *All members* ✓
- GM-38 Operations and Site 1 Soil Vapor Extraction Containment System Performance – *H & S* ✓
- Onsite Activities-PCB area – *Tetra Tech* ✓
- OU-2 Offsite Groundwater Investigation Installation of VPB and pump test activities performance– *Tetra Tech/Resolution Consultants*
- Closing remarks – *Lora Fly, NAVFAC Mid Atlantic*



Restoration Advisory Board (RAB) Meeting

GM-38 Area Groundwater Treatment Plant and Site 1 Soil Vapor Extraction Containment System Operation

Naval Weapons Industrial Reserve
Plant (NWIRP) Bethpage
May 15, 2013

Presentation Agenda



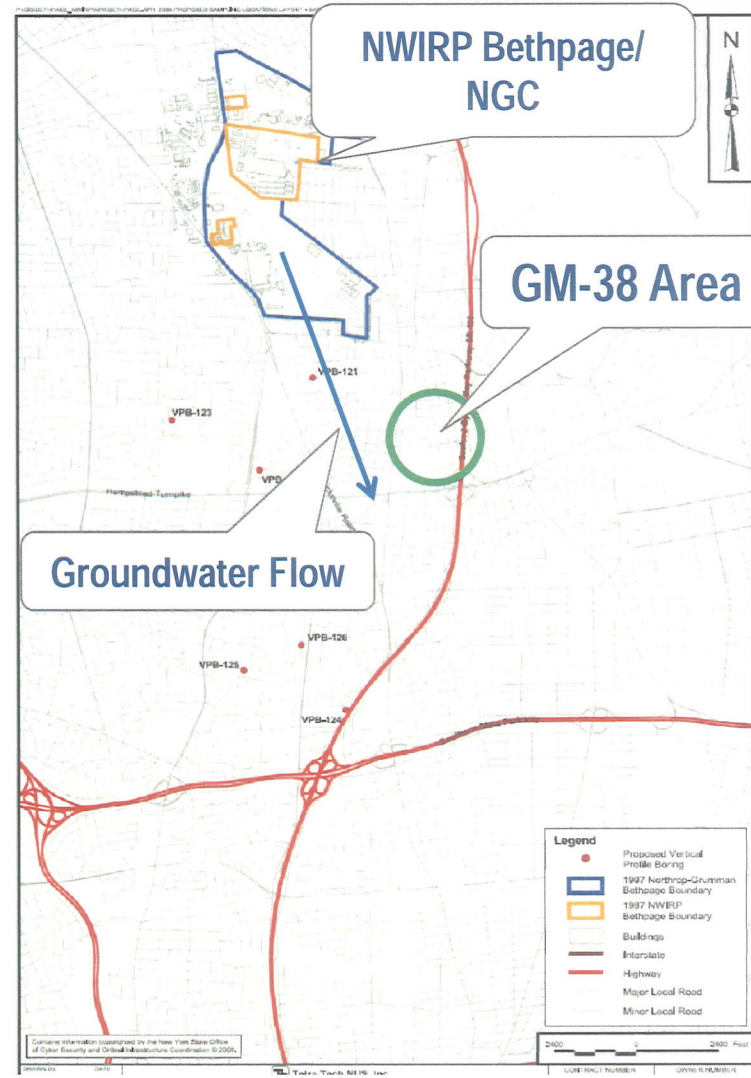
- **GM-38 Groundwater Treatment Plant (GWTP)**
 - Overview
 - Operational Activities
 - GWTP performance and future activities

- **Site 1 SVECS (Soil Vapor Extraction Containment System)**
 - Overview
 - Operational Activities
 - System performance and future activities

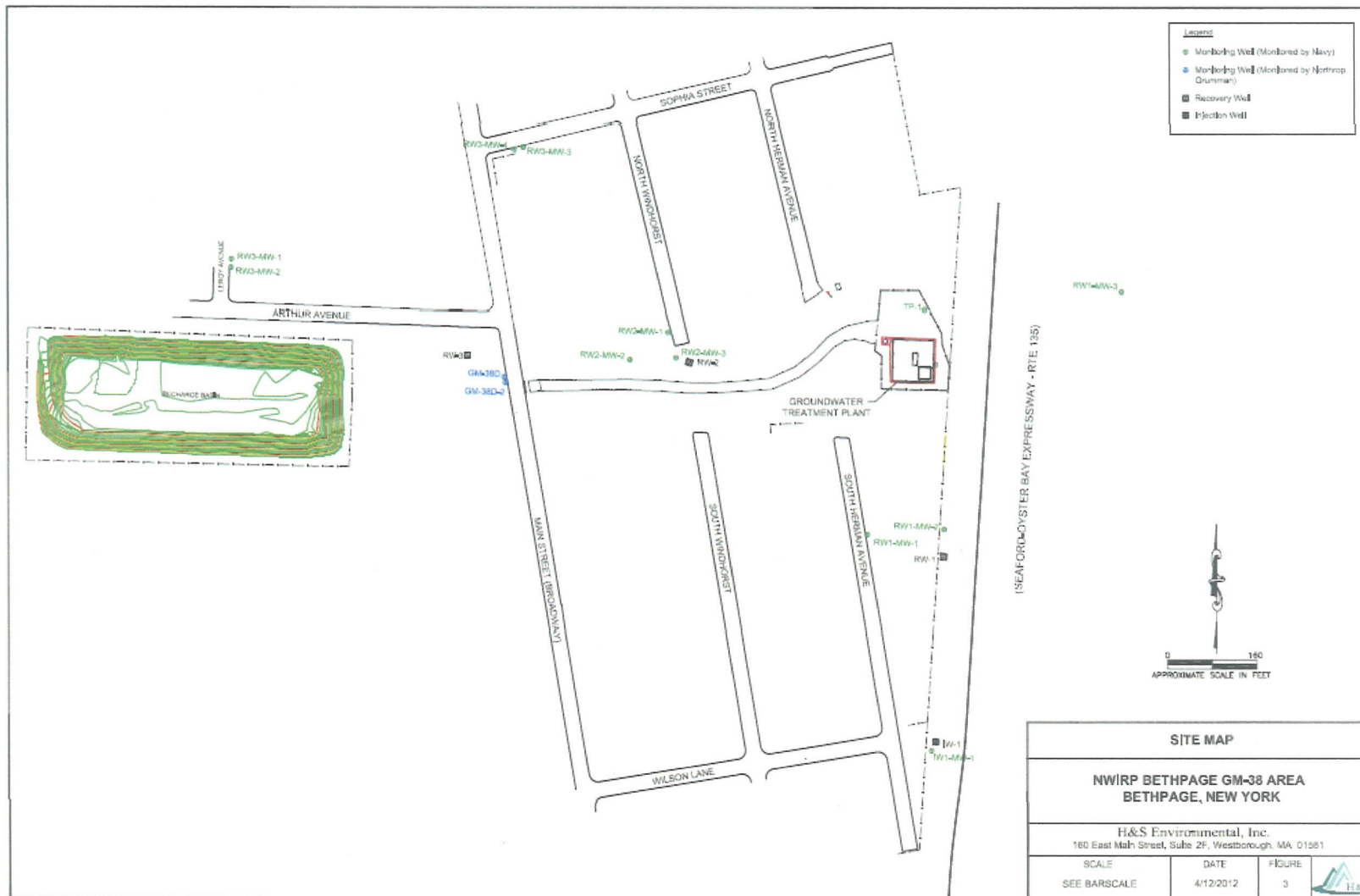
GM-38 Project Overview



- Purpose: Treat an area of higher concentration volatile organic compound (VOC)-impacted groundwater.
- System started operation in October 2009.
- In 2012, system extracted 40.3 million gallons of water and 128 pounds of VOCs per month.



GM-38 REMEDIAL ACTION



X:\HS_Environmental\NWIRP-NY\As-Built 2008-PM.dwg 4/12/2012

GM-38 REMEDIAL ACTION



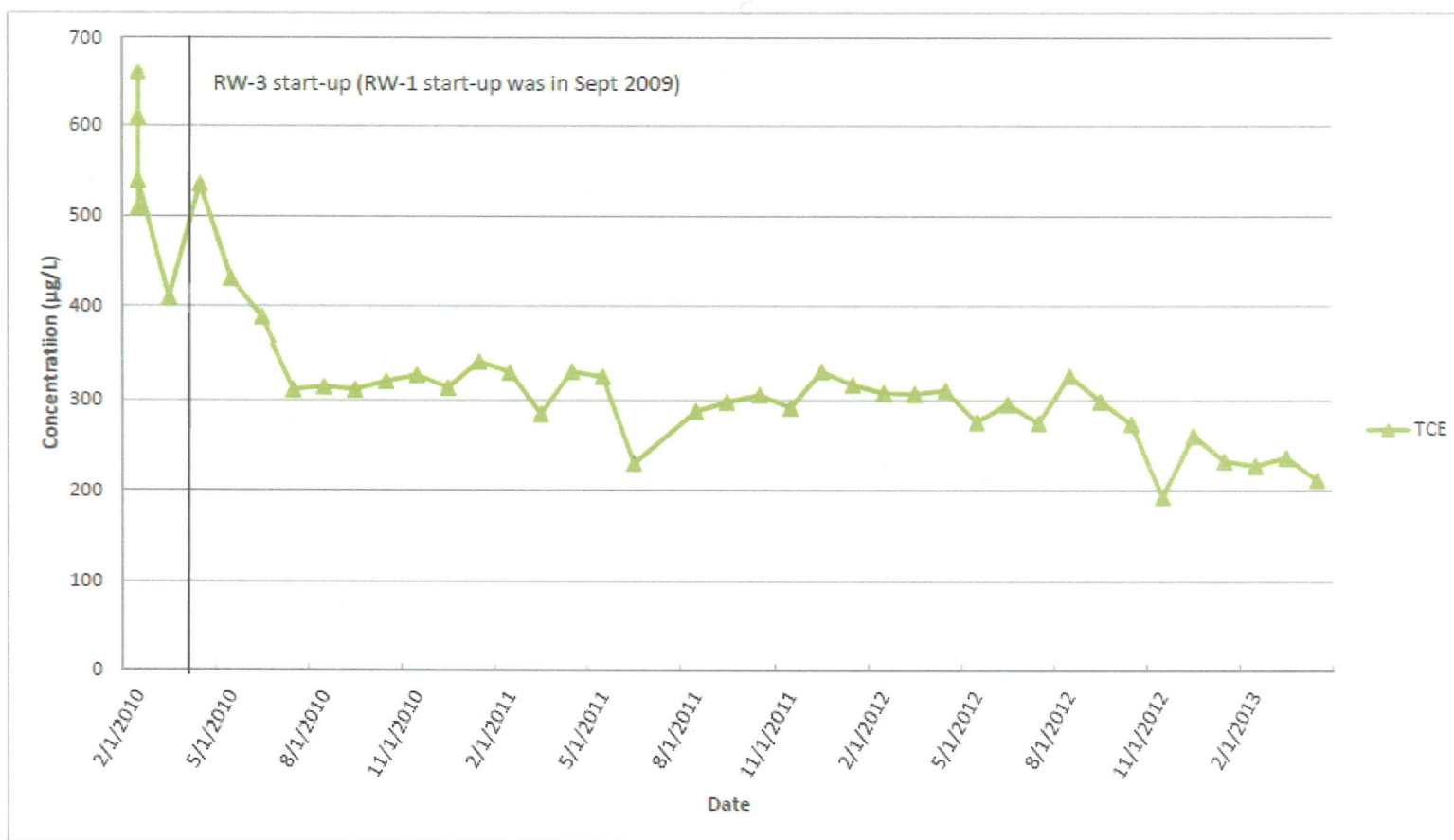
Recovery Well RW-1 (335-395 and 410-435 ft bgs)
TCE Concentrations
GM-38 Groundwater Treatment Plant
NWIRP Bethpage, NY



GM-38 REMEDIAL ACTION



Recovery Well RW-3 (392-412 and 442-504 ft bgs)
TCE Concentrations
GM-38 Groundwater Treatment Plant
NWIRP Bethpage, NY

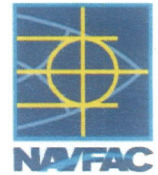


GM-38 GWTP Operational Activities



- Quarterly groundwater samples collected from eight monitoring wells (3-4 December 2012, 13-14 March 2013).
 - Next event scheduled for June 2013, to include several additional wells.
- System down 13-21 December 2012 for replacement and reconfiguration of new PC after current PC malfunctioned.
- Pump test performed 29 March 2013 – 15 April 2015.

GM-38 GWTP Performance and Future Activities



- Plant operates in compliance with air and SPDES permit guidelines.
- Runtime is near 95% with minimal downtime due to power outages and scheduled maintenance.
- Approximately 1,715 million gallons of water treated through April 2013.
- Collect monthly air and water compliance samples.
 - Submit monthly O&M compliance reports.
- Collect quarterly groundwater samples of surrounding monitoring wells.
 - Submit quarterly operations reports.

GM-38 GWTP Performance and Future Activities

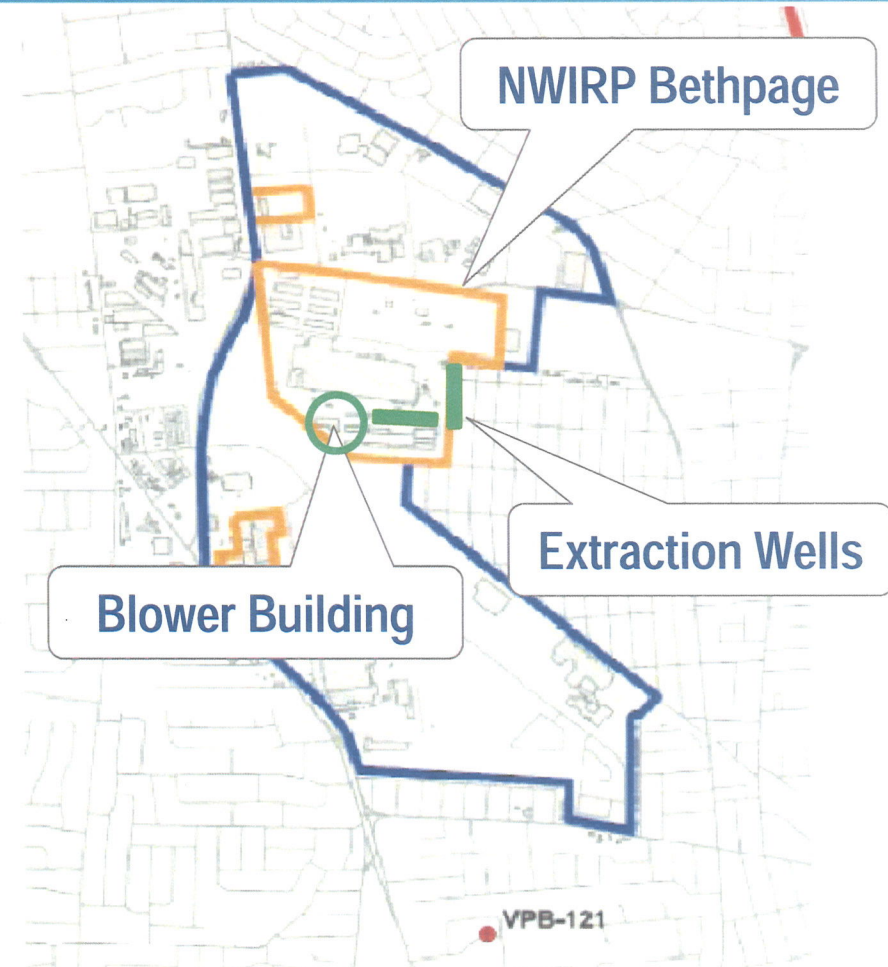


- System will be operated until COC concentrations are similar to those in the surrounding aquifer.
- Optimization activities are ongoing:
 - Improve performance
 - Evaluate capture zone
 - Reduce operating cost

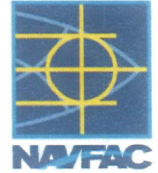
SITE 1 SVECS Project Overview



- Purpose: Prevent offsite migration of Site 1 VOC-impacted soil gas and cleanup offsite soil gas.
- System started operation in January 2010 and continues to operate.
- Extracts approximately 400 cubic feet per minute of soil gas from 12 wells located along Site 1 fence line. Five additional extraction wells added in October 2011 to address potential VOCs under Plant No. 3 and South Warehouse.

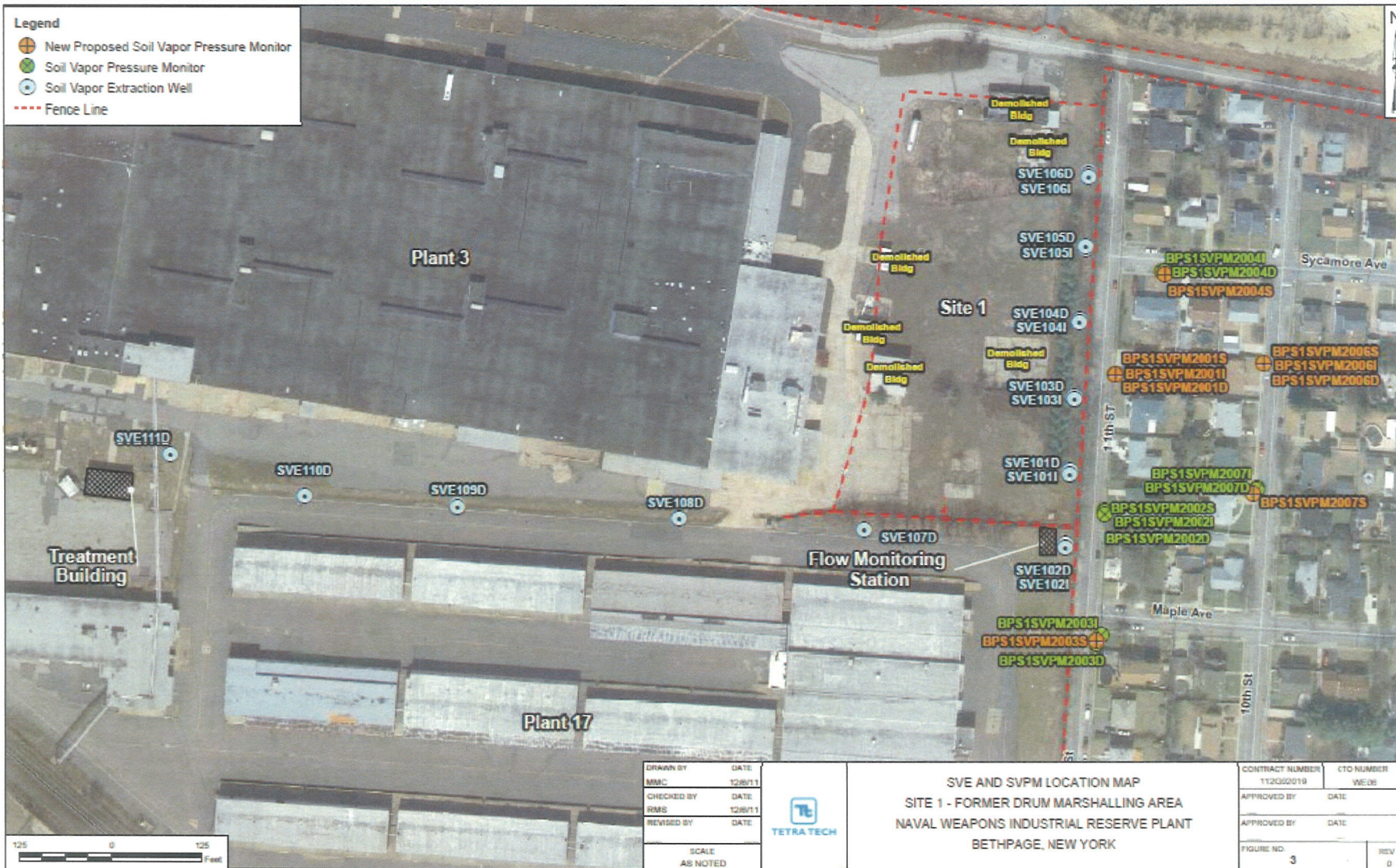


SITE 1 SVECS Operational Activities



- Nine additional SVPMs installed along 10th, 11th, and Sycamore Streets 5-6 September 2012.
- Quarterly vapor samples collected from 12 SVE wells (5 December 2012 and 15 January 2013).
- Annual vapor samples collected from 18 SVPMs on 15-16 January 2013.
- Quarterly SVPM monitoring of 18 SVPMs performed 5 December 2012 and 15 January 2013.
- Next quarterly event scheduled for mid-May 2013.

SITE 1 SVECS Offsite Soil Gas Monitoring



DRAWN BY	DATE
MMC	12/28/11
CHECKED BY	DATE
RMB	12/28/11
REVISED BY	DATE
SCALE AS NOTED	



SVE AND SVPM LOCATION MAP
 SITE 1 - FORMER DRUM MARSHALLING AREA
 NAVAL WEAPONS INDUSTRIAL RESERVE PLANT
 BETHPAGE, NEW YORK

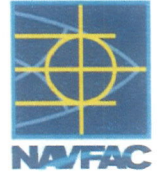
CONTRACT NUMBER	CTO NUMBER
112Q02019	WEIR
APPROVED BY	DATE
APPROVED BY	DATE
FIGURE NO.	REV
3	0

SITE 1 SVECS Performance and Future Activities



- Plant operates in compliance with air permit guidelines.
- Runtime is above 95% with minimal downtime due to power outages and scheduled maintenance.
- Collect monthly air compliance samples.
- Collect quarterly air samples of SVE wells and perform quarterly SVPM monitoring. Collect annual air samples of the SVPMs (winter time-frame).
 - Submit quarterly operations reports.

SITE 1 SVECS Performance and Future Activities



- System is expected to operate until approximately 2015.
- Optimization activities are ongoing:
 - Improve performance
 - Evaluate capture zone
 - Reduce operating cost

