

**Quarterly Operations Report
Second Quarter 2017**

**Groundwater Treatment Plant
GM-38 Area Groundwater Remediation
Naval Weapons Industrial Reserve Plant
Bethpage, New York**

**Contract No. N40085-10-D-9409
Contract Task Order No. 0002**

September 2017

Prepared for:



Naval Facilities Engineering Command Mid-Atlantic
9324 Virginia Avenue
Norfolk, VA 23511

Prepared by:



**KOMAN Government Solutions, LLC
180 Gordon Drive, Suite 110
Exton, Pennsylvania 19341
(610) 363-3000**

**Quarterly Operations Report
Second Quarter 2017**

**Groundwater Treatment Plant
GM-38 Area Groundwater Remediation
Naval Weapons Industrial Reserve Plant
Bethpage, New York**

**Contract No. N40085-10-D-9409
Contract Task Order No. 0002**

September 2017

Prepared for:

Naval Facilities Engineering Command Mid-Atlantic
9324 Virginia Avenue
Norfolk, VA 23511



Patrick Schauble
Program Manager

9/28/17

Date

Stephane Roy
Project Manager

9/28/17

Date

TABLE OF CONTENTS

1.0	INTRODUCTION.....	1-1
1.1	Background.....	1-1
1.2	GWTP Overview	1-2
2.0	GWTP OPERATIONS AND MAINTENANCE.....	2-1
2.1	Routine Maintenance Activities	2-1
2.2	Non-routine Maintenance / Site Activities	2-1
3.0	GWTP MONITORING.....	3-1
3.1	Process Water Quality Monitoring.....	3-1
3.2	Air Quality Monitoring.....	3-1
3.3	Groundwater Quality Monitoring.....	3-2
3.3.1	Groundwater Quality Results	3-3
3.3.2	Groundwater Concentration Trends	3-3
4.0	CONCLUSIONS AND RECOMMENDATIONS.....	4-1
5.0	REFERENCES.....	5-1

TABLES

TABLE 1	Discharge Monitoring Results – Second Quarter 2017
TABLE 2	Air Sampling Results – Second Quarter 2017
TABLE 3	Stack Emissions – Second Quarter 2017
TABLE 4	Groundwater Level Measurements – Second Quarter 2017

FIGURES

FIGURE 1	Site Map
FIGURE 2	Process Flow Diagram
FIGURE 3	GM-38 Area Site Map
FIGURE 4	Second Quarter 2017 Groundwater Analytical Map – Select VOC Concentrations
FIGURE 5	Groundwater Concentrations Trends of Select VOCs – RW-1

APPENDICES

APPENDIX A NYSDEC Effluent Limitations and Monitoring Requirements and April 2017 –
June 2017 DMRs

APPENDIX B NYSDEC Air Discharge Limit Documentation

APPENDIX C Field Logs – Second Quarter 2017

Acronyms and Abbreviations

ARAR	Applicable or Relevant and Appropriate Requirement
AS	air stripper
ASE	air stripper effluent
BFE	bag filter effluent
bgs	below ground surface
CERCLA	Comprehensive Environmental Response Compensation and Liability Act
DAR	Division of Air Resources
DCA	dichloroethane
DCE	dichloroethene
DMR	Discharge Monitoring Report
DO	dissolved oxygen
DoD	Department of Defense
DTW	depth to water
ECL	Environmental Conservation Law
EB	equipment rinsate blank
ELAP	Environmental Laboratory Accreditation Program
GOCO	Government Owned Contractor Operated
gpm	gallon per minute
GWTP	groundwater treatment plant
KGS	KOMAN Government Solutions, LLC
HMI	human-machine interface
IRP	Installation Restoration Program
LGAC	liquid-phase granular activated carbon
MS/MSD	matrix spike/matrix spike duplicate
NAVFAC	Naval Facilities Engineering Command Mid-Atlantic
Navy	U.S. Department of the Navy
NELAC	National Environmental Accreditation Conference
NG	Northrop Grumman
NWIRP	Naval Weapons Industrial Reserve Plant
NYSDEC	New York State Department of Environmental Conservation
NYSDOH	New York State Department of Health
O&M	Operation and Maintenance
ORP	oxidation reduction potential

OU	operable unit
PCE	tetrachloroethene
PLC	programmable logic controller
QA/QC	quality assurance / quality control
ROD	Record of Decision
RPD	relative percent difference
SC	standard conductivity
scfm	standard cubic feet per minute
SPDES	Storm Pollution Discharge Elimination System
TB	trip blank
TCE	trichloroethene
TE	treated effluent
TIC	tentatively identified compound
TSS	total suspended solids
TtEC	Tetra Tech EC, Inc.
USEPA	U.S. Environmental Protection Agency
VC	vinyl chloride
VGAC	vapor-phase granular activated carbon
VOC	volatile organic compound

1.0 INTRODUCTION

KOMAN Government Solutions, LLC (KGS) has prepared this Quarterly Operations Report for the GM-38 Area Groundwater Treatment Plant (GWTP) at the Naval Weapons Industrial Reserve Plant (NWIRP) in Bethpage, New York. This report has been prepared for the U.S. Department of the Navy (Navy), Naval Facilities Engineering Command (NAVFAC), Mid-Atlantic, under Contract No. N40085-10-D-9409, Contract Task Order No. 0002. This Second Quarter 2017 Operations Report details activities that occurred from April to June 2017. Data was collected and operational activities were performed by KGS in accordance with the following documents:

- *Final Operation, Maintenance & Monitoring Plan for Groundwater Treatment Plant GM-38 Area Groundwater Remediation, Naval Weapons Industrial Reserve Plant, Bethpage, New York* prepared by Tetra Tech EC, Inc. (TtEC) in 2010, hereafter referred to as the “O&M Manual.”
- *Final Sampling and Analysis Plan (Field Sampling Plan and Quality Assurance Project Plan), UFP-SAP for Operations, Maintenance, and Monitoring of the Groundwater Treatment Plant, GM-38 Area, Naval Weapons Industrial Reserve Plant, Bethpage, New York* prepared by TtEC in 2010.

1.1 Background

NWIRP Bethpage is located in east central Nassau County, Long Island, New York, approximately 30 miles east of New York City (**Figure 1**) and is currently listed by New York State Department of Environmental Conservation (NYSDEC) as an “inactive hazardous waste site” (#1-30-003B). In the late 1990s, the Navy's property totaled approximately 109.5 acres and was a Government Owned Contractor-Operated (GOCO) facility that was operated by Northrop Grumman (NG) until September 1998. NWIRP Bethpage was bordered on the north, west, and south by property owned, or formerly owned, by NG that covered approximately 550 acres, and on the east by a residential neighborhood.

The GM-38 Area refers to a cluster of monitoring wells installed in the 1990s by NG. The GM-38 Area is approximately 8,500 feet south, southeast and hydraulically downgradient of NWIRP Bethpage. The GWTP is located within a utility easement with a street address of 100 Broadway, Bethpage, NY.

The “hot spot” cleanup remedy for the GM-38 Area groundwater was originally set forth in Record of Decision (ROD) documents for Operable Unit 2 (OU 2) Groundwater for the NG and NWIRP Sites (New York State Registry Site Numbers 1-30-003A & 1-30-003B, respectively) issued by NYSDEC Division of Environmental Remediation in March 2001 and for the NWIRP Bethpage Site by NAVFAC in April 2003 (Revision 1). The selected remedy was chosen in accordance with the New York State Environmental Conservation Law (ECL) and the Navy's Installation Restoration Program (IRP). It is also consistent with the Comprehensive Environmental Response Compensation and Liability Act (CERCLA), as amended, 42 U.S.C. §§ 9601-9675.

1.2 GWTP Overview

Currently, groundwater is extracted from recovery well RW-1 (RW-3 was taken off-line in July of 2015, as described below) and treated in the GWTP. The treatment process consists of flow equalization, air stripping and vapor-phase carbon treatment, bag filtration, and liquid-phase carbon treatment. Though the GWTP was originally equipped with a pH adjustment system utilizing sodium hydroxide, it has since been determined that pH adjustment is not necessary and the equipment has been taken off-line and sodium hydroxide sent off site for beneficial reuse. A process flow diagram is presented as **Figure 2**. The treated water is either re-injected into injection well IW-1 or discharged into the Nassau County Recharge Basin #495. Under CERCLA, the Navy is required to meet the effluent requirement in the NYSDEC's Storm Pollution Discharge Elimination System (SPDES) Permit Application as an Applicable or Relevant and Appropriate Requirement (ARAR).

The GWTP was designed to operate at an average flow rate of 1,100 gallons per minute (gpm) (800 gpm from RW-1 and 300 gpm from RW-3), as measured by the average discharge flow rate. It was determined that this flow rate would be necessary to effectively contain the higher concentration of contamination in the GM-38 Area groundwater. Volatile Organic Compounds (VOCs) in the influent groundwater consist of trichloroethene (TCE), tetrachloroethene (PCE), vinyl chloride, cis-1,2-dichloroethene (cis-1,2-DCE), 1,2-dichloroethane (1,2-DCA), benzene, toluene, and total xylenes.

The air stripper (AS) is a structural aluminum tower that is packed with 3.5-inch diameter polypropylene Jaeger Tripack. Groundwater is pumped to the air stripper distribution port and sprayed over the column of Jaeger Tripack at a flow rate of approximately 1,100 gpm. Previously, 100 gpm of recirculated water was also rerouted through the AS, but as of October 2010, recirculation was no longer deemed necessary to the operation of the system. An induced draft countercurrent flow of air enters the air stripper below the base of the packing material at a rate of 8,000 standard cubic feet per minute (scfm). The large surface area of the packing material allows for a mass transfer of the VOCs from the groundwater into the air stream. The VOCs in the off-gas, except for vinyl chloride, are removed via two 20,000-lb vapor phase granular activated carbon (VGAC) units (VGAC-1 and VGAC-2). Vinyl chloride is oxidized by a 20,000-lb vessel containing zeolite impregnated with potassium permanganate (VGAC-3) into potassium chloride and carbon dioxide. The potassium chloride remains in the pore structure of the zeolite substrate. The treated off-gas is discharged from the stack.

Water treated by the air stripper is subsequently processed through three 8,000-lb liquid phase granular activated carbon (LGAC) units in parallel prior to discharge in the recovery basin (or injection well, if necessary. To date, no water has been discharged to the injection well).

The GWTP is controlled by a programmable logic controller (PLC)-based digital and analog control system, with instrumentation that monitors pH, pressure, tank level, flow transmitters, differential pressure transmitters, water level in recovery wells, and motor operational status. The information in the PLC is made available to an operator via a human-machine interface (HMI) program. By using this program, the status of the GWTP can be displayed in real time and adjusted, if necessary, by the operator.

A 2014 evaluation of the GM-38 Area, conducted in order to better determine the capture zone of the recovery wells, recommended that use of recovery well RW-3 be discontinued (“*Capture Zone Evaluation and Path Forward, GM-38 Area Groundwater Treatment Plant*” [Tetra Tech 2014]). The report was sent to NYSDEC in March 2014 and recommended ceasing operation of recovery well RW-3 and increasing the pumping rate of recovery well RW-1. These system modifications would maintain the existing GWTP pumping rate of 1,000 to 1,100 gpm while maintaining the desired capture zone of the GWTP (Tetra Tech 2014). NYSDEC concurred with the implementation of this path forward and associated system modifications on 20 April 2015. On 1 July 2015, in accordance with the approved path forward, recovery well RW-3 was taken off-line. The flowrate of recovery well RW-1 was increased from approximately 800 gpm to approximately 1,000 gpm.

2.0 GWTP OPERATIONS AND MAINTENANCE

While designed to run completely automated, the GWTP requires regular visits by an operator to record and adjust operational parameters and to perform scheduled maintenance. The GWTP is equipped with telemetry that will alert an on-call operator in the event of a plant shutdown.

2.1 Routine Maintenance Activities

Routine maintenance activities at the GWTP were performed during the operator's visits. These activities include general site inspections, collection of operational data (water and vapor flowrates, differential pressures across the AS, carbon units, bag filter units and blower discharge pressures, tank levels and totalizer readings), measurement of water levels in the recovery wells, adjustment of pump signal settings, collection of vapor and process water samples, changing out of bag filters, switching of lead/lag pump assignments, and preventive maintenance of system equipment.

In addition, the following maintenance tasks were also performed during this reporting period:

- On 19 April, Air stripper pumps and LGAC feed pumps were rotated.
- On 5 May, 19 May, 8 June, and 27 June, bag filters were changed out.

2.2 Non-routine Maintenance / Site Activities

The following non-routine activities occurred during the Second Quarter:

- On 2 June, recovery well RW-3 was operated for 1 hour to maintain the integrity of the well for potential future use.
- On 29 June, all fire extinguishers at GM-38 were replaced since the existing fire extinguishers could no longer be re-certified.

3.0 GWTP MONITORING

The intent of the GWTP is to remove contaminant mass and reduce elevated VOC levels to levels similar to those in the surrounding aquifer. It is anticipated that GWTP operation will minimize contaminant impacts on water supply wells and currently unaffected portions of the groundwater aquifer. The GWTP is not intended to remediate groundwater contamination in the local aquifer to non-detectable levels (TtEC 2010). Various process samples (water and vapor) are collected on a monthly basis to monitor GWTP efficiency and to ensure compliance with Federal and State effluent discharge and air emission requirements. In addition, groundwater samples are collected semi-annually to monitor water quality and determine the effectiveness of the remediation activities and monitor the hydraulic containment and capture of impacted groundwater by the recovery wells.

3.1 Process Water Quality Monitoring

Processed groundwater is analyzed to comply with calculations submitted by the Navy and approved by NYSDEC Water Division for the effluent limitations and monitoring requirements. These results are also submitted to NYSDEC on a monthly basis in the form of a Discharge Monitoring Report (DMR). A copy of the approved NYSDEC effluent limitation and monitoring constituents and the reporting forms are included in **Appendix A**.

Monthly aqueous samples are collected from the active recovery well, RW-1, and the treated effluent (TE) discharge line. In addition, various intermediary process system samples are collected monthly, consisting of air stripper effluent (ASE), bag filter effluent (BFE), and effluent of each of the three LGAC units (LC1, LC2, and LC3). Sampling frequency of now inactive recovery well, RW-3, was reduced from monthly to semi-annually.

The analytical results of monthly process water samples collected during the Second Quarter are presented in **Table 1**. The data demonstrates that all permitted constituents were in compliance with regulatory requirements during the Second Quarter. **Table 1** also summarizes the average monthly flowrates in gallons per minute along with the total volume of water processed during each month of the Second Quarter. Monthly DMRs for the Second Quarter (April – June 2017) are included in **Appendix A**.

3.2 Air Quality Monitoring

Treated off-gas discharged at the stack of the GWTP is subject to emissions limitations. Original discharge goals were derived from calculations submitted by the Navy and approved by the NYSDEC Division of Air Resources (DAR) in July 2009. In November 2011, the Navy submitted an evaluation proposing revised discharge goals, which NYSDEC approved in October 2013. A copy of this documentation is included as **Appendix B**.

While only sampling of the stack emissions is required for NYSDEC compliance, process vapor samples are also collected using 6-L summa canisters at various locations to monitor for breakthrough of the VGAC units. The analytical results of monthly influent and effluent vapor samples as well as midfluent samples (VC12 and VC23) collected during the Second Quarter are presented in **Table 2**. Air emissions

calculations using the stack vapor concentrations along with discharge flowrates are presented in **Table 3**. The calculations demonstrate that all constituents were within the regulatory requirements during the Second Quarter based on the calculated emission rates.

3.3 Groundwater Quality Monitoring

The groundwater monitoring well system at the GM-38 Groundwater Remediation Area consists of fourteen monitoring wells (as summarized in **Table 4**), three recovery wells (RW-1, RW-2, RW-3) and one injection well (IW-1). Though RW-2 was installed in 2005, a pump was never installed in this well and the well is not operated as a recovery well due to concerns expressed by the Bethpage Water District. Well locations are depicted on **Figure 3**.

Depth to water (DTW) measurements are collected from twelve of the monitoring wells on a quarterly basis. Prior to 2014, water quality samples were collected from eight of the monitoring wells on a quarterly basis; beginning in 2014, the sample collection frequency was reduced to semi-annually, with sample collection generally in the March and September time-frame. No water quality samples were collected from the monitoring wells during the Second Quarter 2017.

The monitoring network includes well clusters located near the recovery and injection wells as described below and as shown on **Figure 3**. In addition, two wells, GM-38D and GM-38D2, located at the corner of Arthur Avenue and Broadway, are monitored by others. Descriptions of monitoring well locations are as follows:

Recovery Well 1 (RW-1) Monitoring Wells

The RW-1 cluster consists of three monitoring wells screened between 395 and 435 feet below ground surface (bgs). RW1-MW1 is located approximately 140 feet northwest of RW-1 and RW1-MW2 is located approximately 50 feet north of RW-1. RW1-MW3 is located approximately 400 feet northeast of RW-1, on the eastern side of Seaford Oyster Bay Expressway. All three wells are hydraulically monitored while only RW1-MW1 and RW1-MW3 are also monitored for water quality.

Recovery Well 2 (RW-2) Monitoring Wells

The RW-2 cluster consists of three monitoring wells screened between 470 and 510 feet bgs. RW2-MW1 is located approximately 60 feet northwest of RW-2, RW2-MW2 is located approximately 20 feet west of RW-2, and RW2-MW3 is located approximately 100 feet west of RW-2. All three wells are hydraulically monitored while only RW2-MW1 is monitored for water quality.

Recovery Well 3 (RW-3) Monitoring Wells

The RW-3 cluster consists of four monitoring wells. RW3-MW2 and RW3-MW4 are screened between 475 and 495 feet bgs. RW3-MW1 and RW3-MW3 are screened between 330 and 350 feet bgs and 320 and 340 feet bgs, respectively. RW3-MW1 and RW3-MW2 are located approximately 500 feet west of the GM-38 cluster, at the intersection of Arthur Avenue and Leroy Avenue. RW3-MW3 and RW3-MW4 are located approximately 400 feet north of the intersection of Arthur Avenue and Broadway. All four wells are both hydraulically monitored and monitored for water quality.

TP-01

TP-01 is screened between 450 and 470 feet bgs and is located approximately 25 feet north of the GWTP building, inside the fenced area. It is hydraulically monitored to observe the change in water levels due to the influence from the pumping rates at the neighboring public water supply well field near the hot spot area and is also monitored for water quality.

Injection Well 1 (IW-1) Monitoring Well

There is one monitoring well associated with injection well IW-1. IW1-MW1 is screened between 20 and 150 feet bgs, is located approximately 20 feet south of IW-1, and is only hydraulically monitored on a quarterly basis.

3.3.1 Groundwater Quality Results

Quarterly groundwater level measurements of the twelve monitoring wells were collected on 15 June 2017. Results are summarized in **Table 4**. A copy of the field log is included in **Appendix C**.

As mentioned above, no groundwater samples were collected from the monitoring wells during the Second Quarter 2017. Samples are collected monthly from recovery well RW-1, results of which are summarized in **Table 1**.

3.3.2 Groundwater Concentration Trends

Groundwater analytical results of select VOCs (cis-1,2-DCE, PCE, TCE, and vinyl chloride) for recovery well RW-1 during the Second Quarter are presented graphically as **Figure 4**. Additionally, concentration trends of select VOCs (cis-1,2-DCE, TCE, and PCE, as well as vinyl chloride for RW-1) are presented in **Figure 5** and discussed below.

Figure 5 presents concentrations detected at recovery well RW-1. Concentrations of TCE have decreased from initial concentrations in early 2010 (maximum value of 710 µg/L detected in February 2010), remaining below 300 µg/L since the latter half of 2012 and decreasing to a low of 110 µg/L for the first half of 2017. Concentrations of cis-1,2-DCE have followed a similar trend, decreasing from a high of 160 µg/L in February 2010 to a low of 6.8 µg/L in June 2017. PCE concentrations have also exhibited decreasing trends over time, with concentrations decreasing from 180 µg/L in February 2010 to a low of 24.0 µg/L in the first half of 2017. Concentrations of VC have decreased below initial concentrations in 2010. After reaching a maximum concentration of 61 µg/L in February 2010, VC concentrations have remained below 5.0 µg/L since the final quarter of 2011 and below 1.0 µg/L since June 2013.

4.0 CONCLUSIONS AND RECOMMENDATIONS

The intent of the groundwater treatment system at GM-38 is to remove mass and reduce elevated VOC concentrations to levels similar to those in the surrounding aquifer, and in doing so minimize the impacts on downgradient water supply wells and currently unaffected portions of the aquifer. Based on the removal of VOCs by the GWTP and decreasing contaminant concentration trends observed in the recovery wells and several of the monitoring wells, progress toward these goals is apparent. Based on the concentrations in the groundwater wells, the GWTP should continue to be operated. The groundwater sampling frequency for the eight monitoring wells has been reduced to semi-annually in accordance with the O&M Manual. Water levels for the 14 monitoring wells will continue to be monitored on a quarterly basis.

5.0 REFERENCES

Tetra Tech, Inc. (Tetra Tech). 2014. *Capture Zone Evaluation and Path Forward, GM-38 Area Groundwater Treatment Plant, Naval Weapons Industrial Reserve Plant, Bethpage, New York*. March.

Tetra Tech EC, Inc. (TtEC). 2010. *Final Operation, Maintenance & Monitoring Plan for Groundwater Treatment Plant GM-38 Area Groundwater Remediation, Naval Weapons Industrial Reserve Plant, Bethpage, New York*. April.

Tetra Tech EC, Inc. (TtEC). 2010a. *Final Sampling and Analysis Plan (Field Sampling Plan and Quality Assurance Project Plan), UFP-SAP for Operations, Maintenance, and Monitoring of the Groundwater Treatment Plant, GM-38 Area, Naval Weapons Industrial Reserve Plant, Bethpage, New York*. September.

TABLES

Table 1
GM-38 Area Groundwater Remediation
Groundwater Treatment Plant
Naval Weapons Industrial Reserve Plant - Bethpage, NY
Discharge Monitoring Results
Second Quarter 2017

SPDES Parameters	Daily Maximum Goal	Units	April 2017									
			RW-1 ⁽¹⁾	RW-3 ⁽¹⁾	Combined Influent ⁽¹⁾	Air Stripper Effluent (ASE)	Bag Filter Effluent (BFE)	Liquid Carbon 1 Effluent (LC1)	Liquid Carbon 2 Effluent (LC2)	Liquid Carbon 3 Effluent (LC3)	Treated Effluent (TE)	Treated Effluent (TE) Duplicate
Process Stream												
Well Depth		ft	445	530	NA	NA	NA	NA	NA	NA	NA	NA
Screened Interval		ft	335-395 410-430	392-412 442-504	NA	NA	NA	NA	NA	NA	NA	NA
Sampling Date			4/4/17									
Average Flowrate	1100	GPM	982	0.2	982	NR	900	NR	NR	NR	1,008	NR
Total Flow		gallons	43,870,300	11,100	43,881,400	NR	43,885,800	NR	NR	NR	45,040,600	NR
pH	5.5 - 8.5	SU	5.12	NS	5.12	6.09	6.09	6.10	6.12	6.11	6.11	6.13
Carbon Tetrachloride	NA	µg/L	ND (1.0)	NS	ND (1.0)	ND (1.0)	ND (1.0)	ND (1.0)	ND (1.0)	ND (1.0)	ND (1.0)	ND (1.0)
1,1-Dichloroethane	5	µg/L	2.0	NS	2.0	ND (1.0)	ND (1.0)	ND (1.0)	ND (1.0)	ND (1.0)	ND (1.0)	ND (1.0)
1,2-Dichloroethane	0.6	µg/L	0.24 J	NS	0.24 J	ND (1.0)	ND (1.0)	ND (1.0)	ND (1.0)	ND (1.0)	ND (1.0)	ND (1.0)
1,1-Dichloroethene	5	µg/L	1.5	NS	1.5	ND (1.0)	ND (1.0)	ND (1.0)	ND (1.0)	ND (1.0)	ND (1.0)	ND (1.0)
cis 1,2-Dichloroethene	5	µg/L	9.1	NS	9.1	0.44 J	0.53 J	ND (1.0)	0.22 J	ND (1.0)	0.35 J	0.40 J
trans 1,2-Dichloroethene	5	µg/L	ND (1.0)	NS	ND (1.0)	ND (1.0)	ND (1.0)	ND (1.0)	ND (1.0)	ND (1.0)	ND (1.0)	ND (1.0)
Tetrachloroethene	5	µg/L	28	NS	28	0.45 J	0.26 J	ND (1.0)	ND (1.0)	ND (1.0)	ND (1.0)	ND (1.0)
1,1,1-Trichloroethene	5	µg/L	1.1	NS	1.1	ND (1.0)	ND (1.0)	ND (1.0)	ND (1.0)	ND (1.0)	ND (1.0)	ND (1.0)
Trichloroethene	5	µg/L	120	NS	120	2.3	2.4	ND (1.0)	0.32 J	ND (1.0)	0.33 J	ND (1.0)
Vinyl Chloride	2	µg/L	0.20 J	NS	0.20 J	ND (1.0)	ND (1.0)	ND (1.0)	ND (1.0)	ND (1.0)	ND (1.0)	ND (1.0)
Mercury	0.00025	mg/L	ND (0.00010)	NS	ND (0.00010)	ND (0.00010)	ND (0.00010)	ND (0.00010)	ND (0.00010)	ND (0.00010)	ND (0.00010)	ND (0.00010)
Total Suspended Solids (TSS)	NA	mg/L	ND (1.0)	NS	ND (1.0)	ND (1.0)	ND (1.0)	ND (1.0)	ND (1.0)	ND (1.0)	ND (1.0)	ND (1.0)

Table 1
GM-38 Area Groundwater Remediation
Groundwater Treatment Plant
Naval Weapons Industrial Reserve Plant - Bethpage, NY
Discharge Monitoring Results
Second Quarter 2017

SPDES Parameters	Daily Maximum Goal	Units	May 2017									
			RW-1 ⁽¹⁾	RW-3 ⁽¹⁾	Combined Influent ⁽¹⁾	Air Stripper Effluent (ASE)	Bag Filter Effluent (BFE)	Liquid Carbon 1 Effluent (LC1)	Liquid Carbon 2 Effluent (LC2)	Liquid Carbon 3 Effluent (LC3)	Treated Effluent (TE)	Treated Effluent (TE) Duplicate
Process Stream												
Well Depth		ft	445	530	NA	NA	NA	NA	NA	NA	NA	NA
Screened Interval		ft	335-395 410-430	392-412 442-504	NA	NA	NA	NA	NA	NA	NA	NA
Sampling Date			5/10/17									
Average Flowrate	1100	GPM	978	0.0	978	NR	978	NR	NR	NR	1,004	NR
Total Flow		gallons	42,266,500	0	42,266,500	NR	44,992,400	NR	NR	NR	43,421,051	NR
pH	5.5 - 8.5	SU	5.11	NS	5.11	5.98	6.00	6.04	6.06	6.07	6.08	6.09
Carbon Tetrachloride	NA	µg/L	ND (1.0)	NS	ND (1.0)	ND (1.0)	ND (1.0)	ND (1.0)	ND (1.0)	ND (1.0)	ND (1.0)	ND (1.0)
1,1-Dichloroethane	5	µg/L	1.5	NS	1.5	ND (1.0)	ND (1.0)	ND (1.0)	ND (1.0)	ND (1.0)	ND (1.0)	ND (1.0)
1,2-Dichloroethane	0.6	µg/L	ND (1.0)	NS	ND (1.0) J	ND (1.0)	ND (1.0)	ND (1.0)	ND (1.0)	ND (1.0)	ND (1.0)	ND (1.0)
1,1-Dichloroethene	5	µg/L	0.9 J	NS	0.9	ND (1.0)	ND (1.0)	ND (1.0)	ND (1.0)	ND (1.0)	ND (1.0)	ND (1.0)
cis 1,2-Dichloroethene	5	µg/L	7.0	NS	7.0	0.27 J	ND (1.0)	ND (1.0)	0.22 J	ND (1.0)	ND (1.0)	0.29 J
trans 1,2-Dichloroethene	5	µg/L	ND (1.0)	NS	ND (1.0)	ND (1.0)	ND (1.0)	ND (1.0)	ND (1.0)	ND (1.0)	ND (1.0)	ND (1.0)
Tetrachloroethene	5	µg/L	24	NS	24	0.21 J	ND (1.0)	ND (1.0)	ND (1.0)	ND (1.0)	ND (1.0)	ND (1.0)
1,1,1-Trichloroethene	5	µg/L	1.0	NS	1.0	ND (1.0)	ND (1.0)	ND (1.0)	ND (1.0)	ND (1.0)	ND (1.0)	ND (1.0)
Trichloroethene	5	µg/L	110	NS	110	1.7	1.6	0.22 J	0.33 J	0.23 J	0.036 J	0.38 J
Vinyl Chloride	2	µg/L	0.26 J	NS	0.26 J	ND (1.0)	ND (1.0)	ND (1.0)	ND (1.0)	ND (1.0)	ND (1.0)	ND (1.0)
Mercury	0.00025	mg/L	ND (0.00010)	NS	ND (0.00010)	ND (0.00010)	ND (0.00010)	ND (0.00010)	ND (0.00010)	ND (0.00010)	ND (0.00010)	ND (0.00010)
Total Suspended Solids (TSS)	NA	mg/L	ND (1.0)	NS	ND (1.0)	8.9	ND (1.0)	ND (1.0)	ND (1.0)	ND (1.0)	ND (1.0)	ND (1.0)

Table 1
GM-38 Area Groundwater Remediation
Groundwater Treatment Plant
Naval Weapons Industrial Reserve Plant - Bethpage, NY
Discharge Monitoring Results
Second Quarter 2017

SPDES Parameters	Daily Maximum Goal	Units	June 2017									
			RW-1 ⁽¹⁾	RW-3	Combined Influent ⁽¹⁾	Air Stripper Effluent (ASE)	Bag Filter Effluent (BFE)	Liquid Carbon 1 Effluent (LC1)	Liquid Carbon 2 Effluent (LC2)	Liquid Carbon 3 Effluent (LC3)	Treated Effluent (TE)	Treated Effluent (TE) Duplicate
Process Stream												
Well Depth		ft	445	530	NA	NA	NA	NA	NA	NA	NA	NA
Screened Interval		ft	335-395 410-430	392-412 442-504	NA	NA	NA	NA	NA	NA	NA	NA
Sampling Date			6/1/17									
Average Flowrate	1100	GPM	973	0.0	973	NR	971	NR	NR	NR	1,004	NR
Total Flow		gallons	42,013,100	0	42,013,100	NR	41,936,400	NR	NR	NR	43,388,949	NR
pH	5.5 - 8.5	SU	5.12	NS	5.12	6.02	6.07	6.05	6.06	6.09	6.11	6.13
Carbon Tetrachloride	NA	µg/L	0.26 J	NS	0.26 J	ND (1.0)	ND (1.0)	ND (1.0)	ND (1.0)	ND (1.0)	ND (1.0)	ND (1.0)
1,1-Dichloroethane	5	µg/L	1.6	NS	1.6	ND (1.0)	ND (1.0)	ND (1.0)	ND (1.0)	ND (1.0)	ND (1.0)	ND (1.0)
1,2-Dichloroethane	0.6	µg/L	ND (1.0)	NS	ND (1.0) J	ND (1.0)	ND (1.0)	ND (1.0)	ND (1.0)	ND (1.0)	ND (1.0)	ND (1.0)
1,1-Dichloroethene	5	µg/L	1.0	NS	1.0	ND (1.0)	ND (1.0)	ND (1.0)	ND (1.0)	ND (1.0)	ND (1.0)	ND (1.0)
cis 1,2-Dichloroethene	5	µg/L	6.8	NS	6.8	0.40 J	0.28 J	0.24 J	0.23 J	0.25 J	ND (1.0)	0.24 J
trans 1,2-Dichloroethene	5	µg/L	ND (1.0)	NS	ND (1.0)	ND (1.0)	ND (1.0)	ND (1.0)	ND (1.0)	ND (1.0)	ND (1.0)	ND (1.0)
Tetrachloroethene	5	µg/L	25	NS	25	0.23 J	ND (1.0)	ND (1.0)	ND (1.0)	ND (1.0)	ND (1.0)	ND (1.0)
1,1,1-Trichloroethene	5	µg/L	0.99 J	NS	1.0	ND (1.0)	ND (1.0)	ND (1.0)	ND (1.0)	ND (1.0)	ND (1.0)	ND (1.0)
Trichloroethene	5	µg/L	110	NS	110	2.2	1.7	0.33 J	0.33 J	ND (1.0)	0.31 J	0.35 J
Vinyl Chloride	2	µg/L	0.21 J	NS	0.21 J	ND (1.0)	ND (1.0)	ND (1.0)	ND (1.0)	ND (1.0)	ND (1.0)	ND (1.0)
Mercury	0.00025	mg/L	ND (0.00010)	NS	ND (0.00010)	ND (0.00010)	ND (0.00010)	ND (0.00010)	ND (0.00010)	ND (0.00010)	ND (0.00010)	ND (0.00010)
Total Suspended Solids (TSS)	NA	mg/L	ND (1.0)	NS	ND (1.0)	8.9	ND (1.0)	ND (1.0)	ND (1.0)	ND (1.0)	ND (1.0)	ND (1.0)

Notes:

B - Method blank contamination

J - Estimated result between laboratory method detection limit and reporting limit

NS - Not Sampled. RW-3 sampling frequency has been reduced from monthly to semi-annually.

ND - Not detected above laboratory method detection limit. Limit of detection (LOD) given in parentheses.

NR - Not Recorded

gpm - gallons per minute

(1) On 1 July 2015, the RW-1 flowrate was increased from ~800 gpm to ~1,000 gpm and RW-3 was taken off-line, as approved by NYSDEC on 20 April 2015. To maintain the integrity of RW-3 for potential future use, approximately 200 gallons per minute of water are typically pumped for a 1-hour period from the well on a monthly basis. RW-3 is sampled semi-annually, consistent with the groundwater monitoring program. Influent concentrations presented above are therefore equivalent to RW-1 concentrations only.

Table 2
GM-38 Area Groundwater Remediation
Groundwater Treatment Plant
Naval Weapons Industrial Reserve Plant - Bethpage, NY
Air Sampling Results
Second Quarter 2017

DAR Parameters	Discharge Goal ⁽³⁾	Units	April 2017					May 2017				
			Influent (VCI1)	VC12	VC23	Effluent	Effluent Duplicate	Influent (VCI1)	VC12	VC23 ⁽⁵⁾	Effluent	Effluent Duplicate
Process Stream												
Sampling Date			4/4/17					5/11/17				
Average Flowrate		CFM	NR	NR	NR	7,360	NR	NR	NR	NR	7,465	NR
Total Flow ⁽¹⁾		ft ³	NR	NR	NR	317,952,000	NR	NR	NR	NR	333,228,672	NR
Total Flow ⁽²⁾		m ³	NR	NR	NR	9,003,398	NR	NR	NR	NR	9,435,985	NR
1,2-Dichloroethane	NA	µg/m ³	3.3	1.9 J	ND	ND	ND	4.4 J	2.3 J	NA	1.1 J	1.2 J
cis 1,2-Dichloroethene	> 100,000 ⁽⁴⁾	µg/m ³	130	87	270	180	180	110	66	NA	200	190
trans 1,2-Dichloroethene		µg/m ³	2.9	2.3 J	4.9	2.0 J	2.0 J	2.6 J	2.0 J	NA	2.0 J	2.4 J
1,2-Dichloroethene (total)	> 100,000	µg/m ³	140	90	270	180	180	110	71	NA	200	200
Toluene	NA	µg/m ³	4.5	2.20 J	ND	ND	ND	0.74 J	1.20 J	NA	ND	ND
Xylene	NA	µg/m ³	ND	ND	ND	ND	ND	ND	ND	NA	ND	ND
1,1,2-Trichloroethane	NA	µg/m ³	2.1 J	ND	ND	ND	ND	ND	ND	NA	ND	ND
Trichloroethene	2,600	µg/m ³	1600	760	3.2 J	4.4	ND	2000	1100	NA	2.9 J	0.67 J
Vinyl Chloride	560	µg/m ³	3.6	3.2	4.2	2.7	2.8	3.5 J	2.8	NA	1.6 J	2.1
Tetrachloroethene	5,100	µg/m ³	320	44	ND	1.6 J	ND	370	54	NA	1.3 J	ND

Notes:

NA - Not applicable

ND - Not detected

NR - Not recorded

NS - Not sampled

SGC - Short-term Guideline Concentration

µg/m³ - micrograms per cubic meter

CFM - cubic feet per minute

DAR - Division of Air Resources

(1) Total Flow (ft³) = avg flowrate (cfm) * operational time (min)

(2) Total Flow (m³) = total flow (ft³) * (0.3048³)m³/ft³

(3) Discharge goal as approved by NYSDEC's letter dated 31 October 2013.

(4) Discharge goal is for total 1,2-Dichloroethene.

(5) Summa canister for sample NWIRP-GM-38-AIR-VC23- was leaking upon arrival at the laboratory due to a crack in the stem line. No results are available for this location.

Table 2
GM-38 Area Groundwater Remediation
Groundwater Treatment Plant
Naval Weapons Industrial Reserve Plant - Bethpage, NY
Air Sampling Results
Second Quarter 2017

DAR Parameters	Discharge Goal ⁽³⁾	Units	June 2017				
			Influent (VC1)	VC12	VC23	Effluent	Effluent Duplicate
Process Stream							
Sampling Date			6/1/17				
Average Flowrate		CFM	NR	NR	NR	7,479	NR
Total Flow ⁽¹⁾		ft ³	NR	NR	NR	323,075,520	NR
Total Flow ⁽²⁾		m ³	NR	NR	NR	9,148,480	NR
1,2-Dichloroethane	NA	µg/m ³	4.0 J	2.6 J	ND	ND	0.93 J
cis 1,2-Dichloroethene	> 100,000 ⁽⁴⁾	µg/m ³	110	62	200	130	130
trans 1,2-Dichloroethene		µg/m ³	2.0 J	1.2 J	3.8	1.2 J	1.7 J
1,2-Dichloroethene (total)	> 100,000	µg/m ³	110	63	210	130	140
Toluene	NA	µg/m ³	0.75 J	1.1 J	0.20 J	21	ND
Xylene	NA	µg/m ³	ND	ND	ND	ND	ND
1,1,2-Trichloroethane	NA	µg/m ³	ND	ND	ND	ND	ND
Trichloroethene	2,600	µg/m ³	1800	1500	10.0	13	1.4 J
Vinyl Chloride	560	µg/m ³	2.9 J	3.5	3.2	1.9 J	2.1
Tetrachloroethene	5,100	µg/m ³	380	69	3.4 J	4.0 J	0.51 J

Notes: Notes:
NA - Not applic NA - Not applicable
ND - Not detect ND - Not detected
NR - Not recor NR - Not recorded
NS - Not sampl NS - Not sampled
SGC - Short-ter SGC - Short-term Guideline Concentration
µg/m³ - microg µg/m³ - micrograms per cubic meter
CFM - cubic fee CFM - cubic feet per minute
DAR - Division c DAR - Division of Air Rescources
(1) Total Flow (l(1) Total Flow (ft³) = avg flowrate (cfm) * operational time (min)
(2) Total Flow (i(2) Total Flow (m³) = total flow (ft³) * (0.3048³)m³/ft³
(3) Disharge go (3) Discharge goal as approved by NYSDEC's letter dated 31 October 2013.
(4) Discharge gr(4) Discharge goal is for total 1,2-Dichloroethene.
(5) Summa cani(5) Summa canister for sample NWIRP-GM-38-AIR-VC23- was leaking upon laboratory d laboratory due to a crack in the stem line. No results are available for th

Table 3
GM-38 Area Groundwater Remediation
Groundwater Treatment Plant
Naval Weapons Industrial Reserve Plant - Bethpage, NY
Stack Emissions
Second Quarter 2017

DAR Parameters	Discharge Goal ⁽¹⁾	Units	April 2017	May 2017	June 2017
Sampling Date			4/4/17	5/11/17	6/1/17
Average Flowrate		CFM	7,360	7,465	7,479
Total Flow		ft ³	317,952,000	333,228,672	323,075,520
Total Flow		m ³	9,003,398	9,435,985	9,148,480
Trichloroethene	0.09	lb/hr	0.00012	0.00008	0.00036
Vinyl Chloride	0.02	lb/hr	0.00007	0.00004	0.00005
1,2 Dichloroethene	11	lb/hr	0.00496	0.00559	0.00364
1,2-Dichloroethane	NA	lb/hr	0.00000	0.00003	0.00000
Toluene	NA	lb/hr	0.00000	0.00000	0.00059
Xylene	NA	lb/hr	0.00000	0.00000	0.00000
1,1,2-Trichloroethane	NA	lb/hr	0.00000	0.00000	0.00000
Tetrachloroethene	0.18	lb/hr	0.00004	0.00004	0.00011

Notes:

NA - Not applicable

lb/hr - pounds per hour

DAR - Division of Air Resources

CFM - Cubic feet per minute

Stack Emissions (lb/hr) = average flowrate (cfm) * (0.3048^{^3})m³/ft³ * conc.(ug/m³) * 1 lb/453592370 ug *
60 min/hr

(1) Discharge goal as approved by NYSDEC's letter dated 31 October 2013.

Table 4
GM-38 Area Groundwater Remediation
Groundwater Treatment Plant
Naval Weapons Industrial Reserve Plant - Bethpage, NY
Groundwater Level Measurements
Second Quarter 2017

Monitoring Well ID	Date	Well Elevation (ft amsl)	Total Depth (ft)	Screen Interval (ft)	Depth to Water (ft)	Groundwater Elevation (ft amsl)
RW1-MW1	06/15/17	85.86	435	395-435	40.85	45.01
RW1-MW2	06/15/17	87.35	435	395-435	44.51	42.84
RW1-MW3	06/15/17	80.34	435	395-435	33.68	46.66
RW2-MW1	06/15/17	90.75	510	470-510	43.78	46.97
RW2-MW2	06/15/17	90.15	510	470-510	43.47	46.68
RW2-MW3	06/15/17	89.75	510	470-510	43.50	46.25
RW3-MW1	06/15/17	92.22	350	330-350	41.35	50.87
RW3-MW2	06/15/17	91.98	495	475-495	43.50	48.48
RW3-MW3	06/15/17	92.98	340	320-340	41.70	51.28
RW3-MW4	06/15/17	92.92	495	475-495	44.82	48.10
TP-01	06/15/17	85.91	470	450-470	39.58	46.33
IW1-MW1	06/15/17	89.41	150	20-150	40.15	49.26
GM38D	NA	91.37	340	320-340	NA	NA
GM382D	NA	91.57	495	475-495	NA	NA

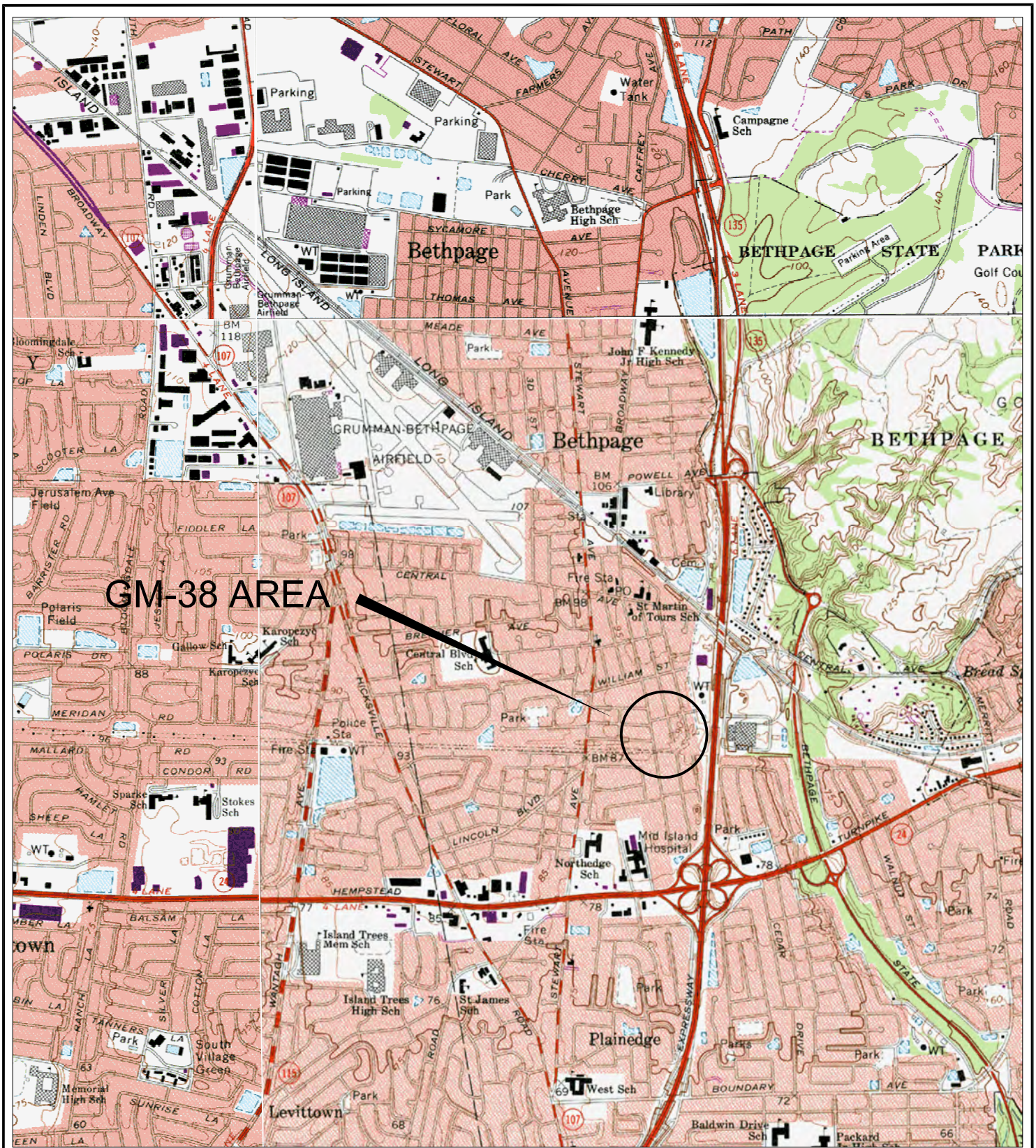
Notes:

amsl - above mean sea level

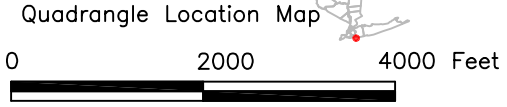
ft - feet

NA - Not Available

FIGURES



GM-38 AREA

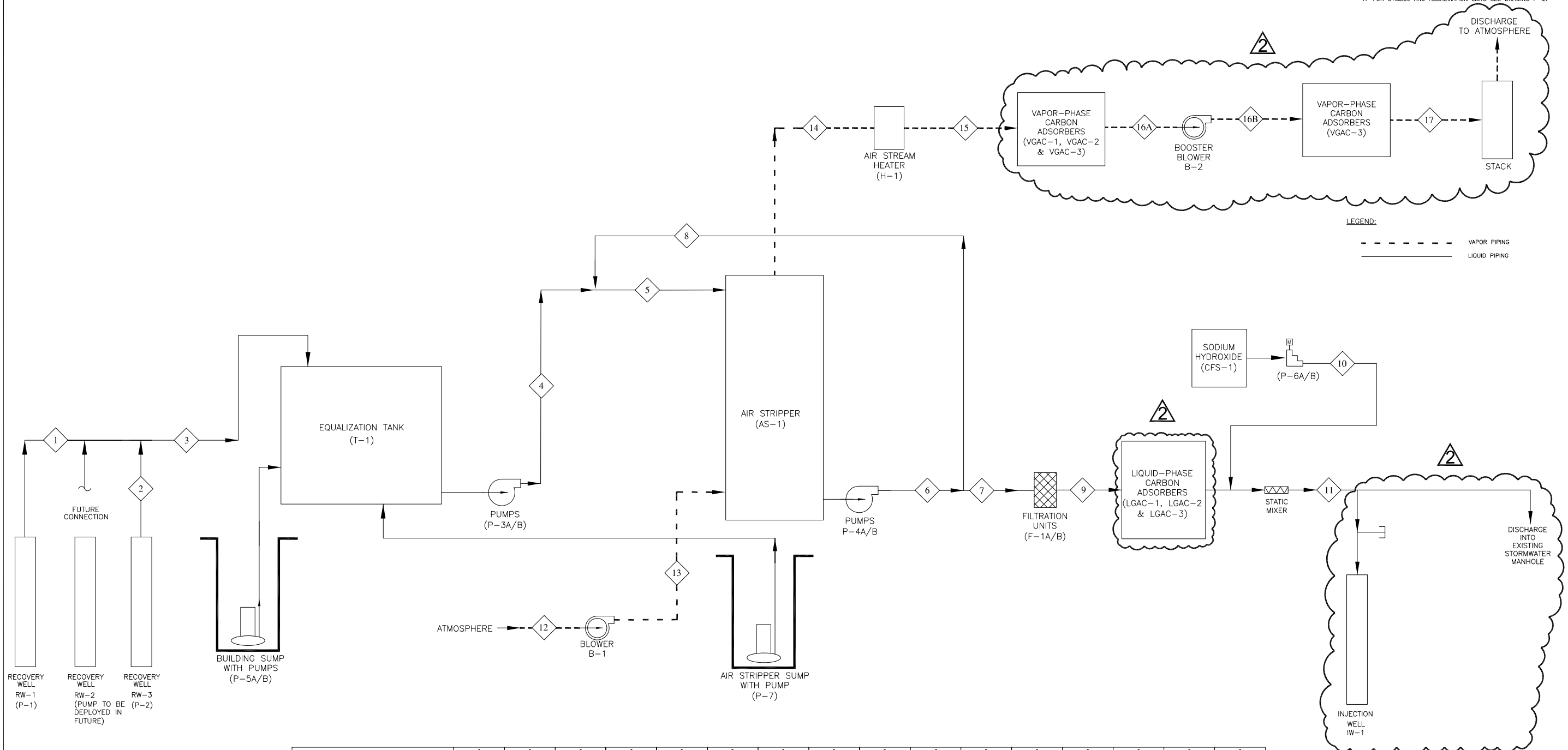


Source: U.S.G.S. Topographic Maps (7.5 Minute)
Amityville, Freeport, Hicksville, Huntington, NY Quadrangles

U.S. Navy RAC
Engineering Field Activity, Northeast
GM-38 Area (Offsite)
NWIRP Bethpage
Bethpage, NY

Figure 1
Site Location Map

NOTES:
1. FOR SYMBOL AND ABBREVIATION LISTS SEE DRAWING P-2.



STREAM NO.	1	2	3	4	5	6	7	8	9	10	11	12	13	14	15	16
COMPOSITION (UG/L, UNLESS OTHERWISE NOTED)																
BENZENE	4	4	4	4	3	-	-	-	-	-	-	-	-	-	-	-
TOLUENE	15	15	15	15	12	-	-	-	-	-	-	-	-	-	-	-
XYLENES, TOTAL	16	16	16	16	12	-	-	-	-	-	-	-	-	-	-	-
1,2-DICHLOROETHANE	3	3	3	3	2.8	-	-	-	-	-	2.7 ^{E-07}	-	-	-	-	-
cis 1,2-DICHLOROETHENE	1100	1100	1100	1100	1008	0.10	0.10	0.10	0.10	-	1.0 ^{E-04}	-	-	-	-	-
VINYL CHLORIDE	300	300	300	300	275	0.03	0.03	0.03	0.03	-	2.7 ^{E-05}	-	-	-	-	-
TETRACHLOROETHENE (PCE)	900	900	900	900	825	0.08	0.08	0.08	0.08	-	8.2 ^{E-05}	-	-	-	-	-
TRICHLOROETHENE (TCE)	3400	3400	3400	3400	3117	3.12	3.12	3.12	3.12	-	3.1 ^{E-03}	-	-	-	-	-
WATER FLOW RATE (GPM)	800	300	1100	1100	1200	1200	1100	100	1100	1.1 gpd	1100	-	-	-	-	-
TEMPERATURE (°F)	55	55	55	55	55	55	55	55	55	60	55	-	-	-	-	-
PRESSURE (PSIG)	-	-	-	-	-	-	-	-	-	-	-	-0.27	1.50	1.36	1.18	0.53
DENSITY (lb/ft ³)	-	-	-	-	-	-	-	-	-	95.5	-	0.077	0.085	0.084	0.082	0.079
MASS FLOW RATE (lb/hr)	400364	150136	550500	550500	600545	600545	550500	50,045	550500	0.59	550500	36,960	40,800	40,320	39,360	37,920
RELATIVE HUMIDITY (%)	-	-	-	-	-	-	-	-	-	-	-	50	50	100	50	50
STATIC PRESSURE (PSIA)	-	-	-	-	-	-	-	-	-	-	-	0.214	0.214	0.214	0.275	0.275
pH (S.U.)	5.5	5.5	5.5	5.5	5.5	6.0	6.0	6.0	6.0	14	7.0	-	-	-	-	-
VAPOR FLOW RATE (CFM)	-	-	-	-	-	-	-	-	-	-	-	8000	8000	8000	8000	8000
TOTAL VAPOR VOC (PPMV)	-	-	-	-	-	-	-	-	-	-	-	-	-	25.5	25.5	1.2
TOTAL VAPOR VOC (LBS/HR)	-	-	-	-	-	-	-	-	-	-	-	-	-	3.18	3.18	0.15

DEPARTMENT OF THE NAVY NAVAL WEAPONS INDUSTRIAL RESERVE PLANT	ENGINEERING FIELD ACTIVITY - NORTHEAST GM-38 AREA GROUNDWATER TREATMENT AND OFF-GAS TREATMENT	PROCESS FLOW DIAGRAM	DATE
LESTER	NAVAL WEAPONS INDUSTRIAL RESERVE PLANT BETHPAGE, NEW YORK	ENGINEER FOR COMMANDER, WNAFAC	DATE
APPROVED	APPROVED	OFFICER IN CHARGE	DATE
TETRA TECH ENGINEERING CORPORATION PC	TETRA TECH ENGINEERING CORPORATION PC	APPROVED	DATE
DESIGNED BY: DLB	CHECKED BY: BKB	DATE: 05/05/06	DATE
DRAWN BY: DLB	CHECKED BY: BKB	DATE: 03/31/08	DATE
REVISIONS:			
1			
2			

THIS DRAWING PRODUCED ON AUTOCAD DO NOT REVISE MANUALLY

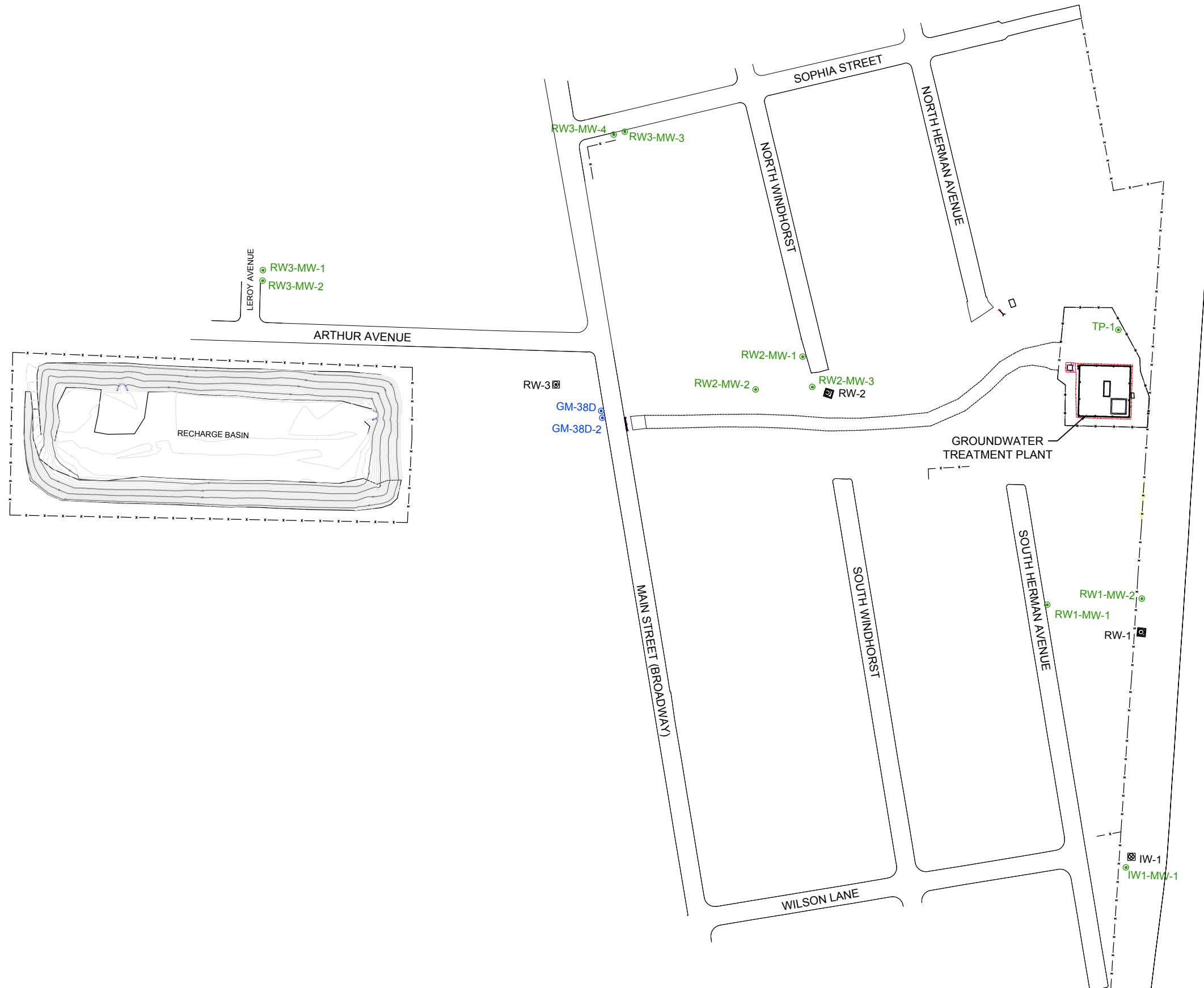
THIS DOCUMENT IS THE PROPERTY OF NAVAL FACILITIES ENGINEERING COMMAND, PREPARED BY TETRA TECH EC, INC., AND IS PROVIDED UPON THE CONDITION THAT IT WILL NOT BE REPRODUCED, COPIED, OR ISSUED TO A THIRD PARTY, AND WILL BE USED SOLELY FOR THE ORIGINAL INTENDED PURPOSE AND SOLELY FOR THE EXECUTION OR REVIEW OF THE ENGINEERING CONSTRUCTION OF THE PROJECT.

IT IS A VIOLATION OF THE NEW YORK STATE EDUCATION LAW, ARTICLE 145, FOR ANY PERSON UNLESS UNDER THE DIRECTION OF A NEW YORK STATE LICENSED PROFESSIONAL ENGINEER, TO ALTER AN ITEM ON THIS DOCUMENT IN ANY WAY.

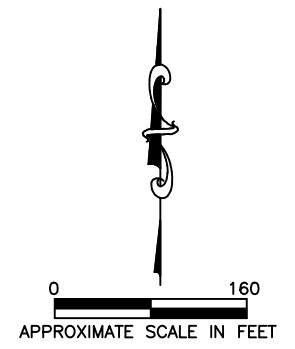
F:\work\Projects\NAFAC\NAFAC_001.dwg (05/05/06) 11:48:43 AM 4/10/06 10:00 AM 10:00 AM

Legend

- Monitoring Well (Monitored by Navy)
- Monitoring Well (Monitored by Northrop Grumman)
- ⊠ Recovery Well
- ⊠ Injection Well



(SEAFORD-OYSTER BAY EXPRESSWAY - RTE 135)

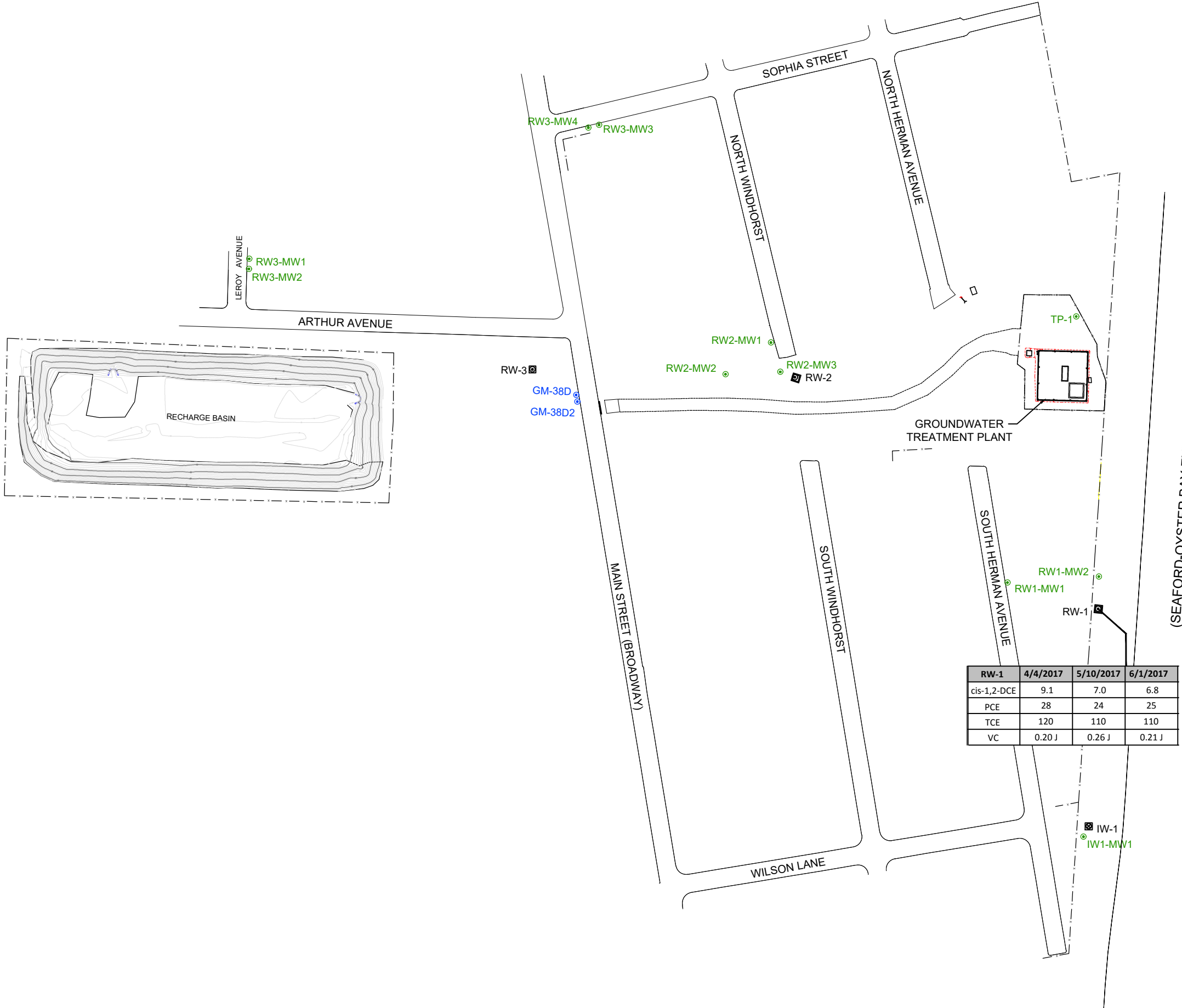


SITE MAP			
NWIRP BETHPAGE GM-38 AREA BETHPAGE, NEW YORK			
KOMAN Government Solutions, LLC 180 Gordon Drive, Suite 110, Exton, PA 19341			
SCALE	DATE	FIGURE	
SEE BARSCALE	4/26/2016	3	

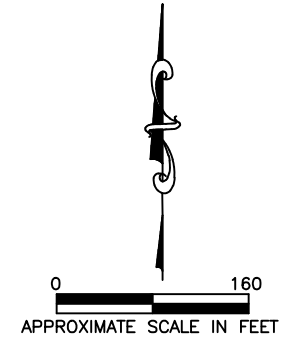
- Legend**
- Monitoring Well (Monitored by Navy)
 - Monitoring Well (Monitored by Northrop Grumman)
 - ⊠ Recovery Well
 - ⊞ Injection Well
 - J Estimated value
 - ND Not Detected above laboratory method detection limit
 - NS Not Sampled
 - DCE Dichloroethene
 - PCE Tetrachloroethane
 - TCE Trichloroethane
 - VC Vinyl Chloride

Notes:
All concentrations reported in µg/L.

Monitoring wells are sampled on a semi-annual basis and were not sampled during the 2nd Quarter 2016. Recovery well RW-1 is sampled on a monthly basis. Recovery well RW-3 is normally sampled on a semi-annual basis in conjunction with the semi-annual LTM events, but was activated for a 1-week period in June 2016 and sampled (along with RW-1) as indicated.



RW-1	4/4/2017	5/10/2017	6/1/2017
cis-1,2-DCE	9.1	7.0	6.8
PCE	28	24	25
TCE	120	110	110
VC	0.20 J	0.26 J	0.21 J



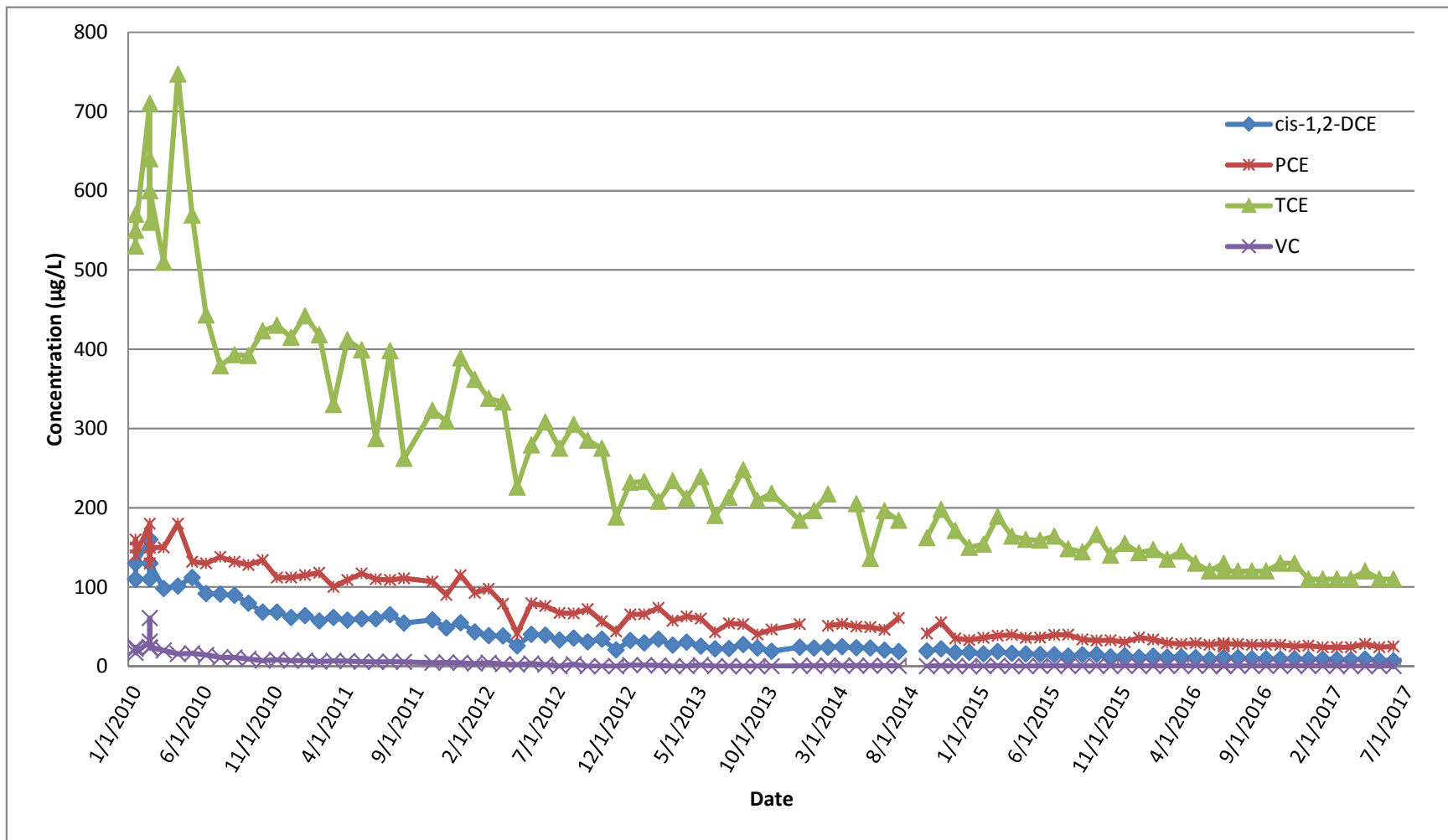
**2nd QUARTER 2017
GROUNDWATER ANALYTICAL MAP
SELECT VOC CONCENTRATIONS**

**NWIRP BETHPAGE GM-38 AREA
BETHPAGE, NEW YORK**

KOMAN Government Solutions, LLC
180 Gordon Drive, Suite 110, Exton, PA 19341

SCALE	DATE	FIGURE	
SEE BARSCALE	7/28/2017	4	

Figure 5
GM-38 Area Groundwater Remediation
Naval Weapons Industrial Reserve Plant - Bethpage, NY
Groundwater Concentration Trends of Select VOCs
RW1



APPENDIX A

**NYSDEC EFFLUENT LIMITATIONS AND MONITORING
REQUIREMENTS AND MONTHLY DMRS**

APRIL 2017



6 May 2017

Mr. Jason Pelton
New York State Department of Environmental Conservation
Division of Solid & Hazardous Materials
625 Broadway
Albany, NY 12233-7252

**Subject: GROUNDWATER DISCHARGE MONITORING/AIR EMISSION REPORT
GM-38 AREA, NWIRP BETHPAGE, NY; DER SITE # 1-30-003B-OU 2
APRIL 2017 REPORTING PERIOD**

Dear Mr. Pelton:

KOMAN Government Solutions, LLC (KGS) is submitting this monthly monitoring report of the groundwater discharge and air emission results for the Groundwater Treatment Plant (GWTP) located at the Former Naval Weapons Industrial Reserve Plant (NWIRP), Bethpage, NY, GM-38 Area. This report was prepared in accordance with GWTP operational requirements for DER Site # 1-30-003B-OU 2.

GWTP operational data from 1 April 2017 to 30 April 2017 are presented in Attachment A. There was no significant downtime for the GWTP during this reporting period.

As indicated in Attachment A, all permitted constituents were in compliance with regulatory guidelines during this reporting period.

Please contact me at 610-400-0622 with any questions or concerns you may have regarding this report.

Sincerely,
KOMAN Government Solutions, LLC

Stephane Roy
Project Manager

Attachment A: Groundwater and Air Sampling Results from April 2017

Cc: Donald Hesler - NYSDEC
Henry Wilkie - NYSDEC

Steven Scharf – NYSDEC

Jean Occidental - NYSDEC Division of Water

Jennifer Pilewski - NYSDEC – Region 1 Water Engineer

Gerard Ennis - Nassau County Department of Public Works

Linda Bianculli - Town of Oyster Bay

Lora Fly - NAVFAC Mid-Atlantic RPM

Greg Pearman – NWIRP Bethpage

GM-38 Copy

ATTACHMENT A
GROUNDWATER AND AIR SAMPLING RESULTS
APRIL 2017

**GM-38 Area Groundwater Remediation
Groundwater Treatment Plant
Naval Weapons Industrial Reserve Plant - Bethpage, NY
Discharge Monitoring Report
April 2017**

SPDES Parameters	April 2017					
Process Stream	Daily Treated Effluent Maximum	Units	RW-1 ⁽¹⁾	RW-3 ⁽²⁾	Combined Influent ⁽¹⁾	Treated Effluent
Well Depth	N/A	ft	445	530	N/A	N/A
Screened Interval	N/A	ft bgs	335-395 410-430	392-412 442-504	N/A	N/A
Sampling Date	N/A		4/4/17			
Effective Flowrate	1100	GPM	982	0.2	982	1,008
Total Flow	N/A	gallons	43,870,300	11,100	43,881,400	45,040,600
pH	5.5 - 8.5	SU	5.12	NS	5.12	6.11
Carbon Tetrachloride	NA	µg/L	ND (1.0)	NS	ND (1.0)	ND (1.0)
1,1-Dichloroethane	5	µg/L	2.0	NS	2.0	ND (1.0)
1,2-Dichloroethane	0.6	µg/L	0.24 J	NS	0.24 J	ND (1.0)
1,1-Dichloroethene	5	µg/L	1.5	NS	1.5	ND (1.0)
cis 1,2-Dichloroethene	5	µg/L	9.1	NS	9.1	0.35 J
trans 1,2-Dichloroethene	5	µg/L	ND (1.0)	NS	ND (1.0) J	ND (1.0)
Tetrachloroethene	5	µg/L	28	NS	28	ND (1.0)
1,1,1-Trichloroethene	5	µg/L	1.1	NS	1.1	ND (1.0)
Trichloroethene	5	µg/L	120	NS	120	0.33 J
Vinyl Chloride	2	µg/L	0.20 J	NS	0.20 J	ND (1.0)
Mercury	0.00025	mg/L	ND (0.00010)	NS	ND (0.00010)	ND (0.00010)
Total Suspended Solids (TSS)	N/A	mg/L	ND (1.0)	NS	ND (1.0)	ND (1.0)

Notes:

B - Method blank contamination

J - Estimated result between laboratory method detection limit and reporting limit

ND - Not detected above laboratory method detection limit. Reporting Limit (RL) given in parentheses.

NR - Not Recorded

NS - Not Sampled. RW-3 sampling frequency has been reduced from monthly to semi-annually.

N/A - Not Applicable

NS - Not Sampled

(1) On 1 July 2015, the RW-1 flowrate was increased from ~800 gpm to ~1,000 gpm and RW-3 was taken off-line, as approved by NYSDEC on 20 April 2015. Influent concentrations presented above are therefore equivalent to RW-1 concentrations only.

(2) To maintain the integrity of RW-3 for potential future use, approximately 200 gallons per minute of water are pumped for a 1-hour period from the well on a monthly basis. RW-3 is sampled semi-annually, consistent with the groundwater monitoring program.

**GM-38 Area Groundwater Remediation
Groundwater Treatment Plant
Naval Weapons Industrial Reserve Plant - Bethpage, NY
Air Sampling Results
April 2017**

DAR Parameters	March 2017	Discharge Goal ⁽¹⁾	April 2017	
			Influent	Effluent
Process Stream				
Sampling Date	N/A	N/A	4/4/17	
Average Flowrate	CFM	N/A	NR	7,360
Total Flow	ft ³	N/A	NR	317,952,000
Total Flow	m ³	N/A	NR	9,003,398
1,2-Dichloroethane	µg/m ³	N/A	3.3	ND
cis 1,2-Dichloroethene	µg/m ³	> 100,000 ⁽²⁾	130	180
trans 1,2-Dichloroethene	µg/m ³		2.9	2.0 J
1,2-Dichloroethene (total)	µg/m ³	>100,000	140	180
Toluene	µg/m ³	N/A	4.5	ND
Total Xylene	µg/m ³	N/A	ND	ND
1,1,2-Trichloroethane	µg/m ³	N/A	2.1 J	ND
Trichloroethene	µg/m ³	2,600	1600	4.4
Vinyl Chloride	µg/m ³	560	3.6	2.7
Tetrachloroethene	µg/m ³	5,100	320	1.6 J

Notes:

CFM - cubic feet per minute

DAR - Division of Air Resources

J - Estimated result between laboratory method detection limit and reporting limit

N/A - Not Applicable

NR - Not recorded

(1) Discharge goal as approved by NYSDEC's letter dated 31 October 2013.

(2) Discharge goal is for total 1,2-Dichloroethene.

**GM-38 Area Groundwater Remediation
Groundwater Treatment Plant
Naval Weapons Industrial Reserve Plant - Bethpage, NY
Controlled Stack Emissions
April 2017**

DAR Parameters	Units	Discharge Goal ⁽¹⁾	April 2017
Sampling Date	N/A	N/A	4/4/17
Average Flowrate	CFM	N/A	7,360
Total Flow	ft ³	N/A	317,952,000
Total Flow	m ³	N/A	9,003,398
Trichloroethene	lb/hr	0.09	0.00012
Vinyl Chloride	lb/hr	0.02	0.00007
1,2 Dichloroethene	lb/hr	11	0.00496
1,2-Dichloroethane	lb/hr	N/A	0.00000
Toluene	lb/hr	N/A	0.00000
Total Xylene	lb/hr	N/A	0.00000
1,1,2-Trichloroethane	lb/hr	N/A	0.00000
Tetrachloroethene	lb/hr	0.18	0.00004

Notes:

CFM - cubic feet per minute

DAR - Division of Air Resources

N/A - Not Applicable

(1) Discharge goal as approved by NYSDEC's letter dated 31 October 2013.

MAY 2017



SBA-certified 8(a), SDB Company

12 June 2017

Mr. Jason Pelton
New York State Department of Environmental Conservation
Division of Solid & Hazardous Materials
625 Broadway
Albany, NY 12233-7252

**Subject: GROUNDWATER DISCHARGE MONITORING/AIR EMISSION REPORT
GM-38 AREA, NWIRP BETHPAGE, NY; DER SITE # 1-30-003B-OU 2
MAY 2017 REPORTING PERIOD**

Dear Mr. Pelton:

KOMAN Government Solutions, LLC (KGS) is submitting this monthly monitoring report of the groundwater discharge and air emission results for the Groundwater Treatment Plant (GWTP) located at the Former Naval Weapons Industrial Reserve Plant (NWIRP), Bethpage, NY, GM-38 Area. This report was prepared in accordance with GWTP operational requirements for DER Site # 1-30-003B-OU 2.

GWTP operational data from 1 May 2017 to 31 May 2017 are presented in Attachment A. There was no significant downtime for the GWTP during this reporting period.

As indicated in Attachment A, all permitted constituents were in compliance with regulatory guidelines during this reporting period.

Please contact me at 610-400-0622 with any questions or concerns you may have regarding this report.

Sincerely,

KOMAN Government Solutions, LLC

Stephane Roy
Project Manager

Attachment A: Groundwater and Air Sampling Results from May 2017

Cc: Donald Hesler - NYSDEC
Henry Wilkie - NYSDEC
Steven Scharf – NYSDEC
Jean Occidental - NYSDEC Division of Water
Jennifer Pilewski - NYSDEC – Region 1 Water Engineer
Gerard Ennis - Nassau County Department of Public Works
Linda Bianculli - Town of Oyster Bay
Lora Fly - NAVFAC Mid-Atlantic RPM
Greg Pearman – NWIRP Bethpage
GM-38 Copy

ATTACHMENT A
GROUNDWATER AND AIR SAMPLING RESULTS
MAY 2017

**GM-38 Area Groundwater Remediation
Groundwater Treatment Plant
Naval Weapons Industrial Reserve Plant - Bethpage, NY
Discharge Monitoring Report
May 2017**

SPDES Parameters	May 2017					
	Daily Treated Effluent Maximum	Units	RW-1 ⁽¹⁾	RW-3	Combined Influent ⁽¹⁾	Treated Effluent
Well Depth	N/A	ft	445	530	N/A	N/A
Screened Interval	N/A	ft bgs	335-395 410-430	392-412 442-504	N/A	N/A
Sampling Date	N/A		5/10/17			
Effective Flowrate	1100	GPM	978	0.0	978	1,004
Total Flow	N/A	gallons	42,266,500	0	42,266,500	43,421,051
pH	5.5 - 8.5	SU	5.11	NS	5.11	6.08
Carbon Tetrachloride	NA	µg/L	ND (1.0)	NS	ND (1.0)	ND (1.0)
1,1-Dichloroethane	5	µg/L	1.5	NS	1.5	ND (1.0)
1,2-Dichloroethane	0.6	µg/L	ND (1.0)	NS	ND (1.0) J	ND (1.0)
1,1-Dichloroethene	5	µg/L	0.9 J	NS	0.9	ND (1.0)
cis 1,2-Dichloroethene	5	µg/L	7.0	NS	7.0	ND (1.0)
trans 1,2-Dichloroethene	5	µg/L	ND (1.0)	NS	ND (1.0) J	ND (1.0)
Tetrachloroethene	5	µg/L	24	NS	24	ND (1.0)
1,1,1-Trichloroethene	5	µg/L	1.0	NS	1.0	ND (1.0)
Trichloroethene	5	µg/L	110	NS	110	0.036 J
Vinyl Chloride	2	µg/L	0.26 J	NS	0.26 J	ND (1.0)
Mercury	0.00025	mg/L	ND (0.00010)	NS	ND (0.00010)	ND (0.00010)
Total Suspended Solids (TSS)	N/A	mg/L	ND (1.0)	NS	ND (1.0)	ND (1.0)

Notes:

B - Method blank contamination

J - Estimated result between laboratory method detection limit and reporting limit

ND - Not detected above laboratory method detection limit. Reporting Limit (RL) given in parentheses.

NR - Not Recorded

NS - Not Sampled. RW-3 sampling frequency has been reduced from monthly to semi-annually.

N/A - Not Applicable

NS - Not Sampled

(1) On 1 July 2015, the RW-1 flowrate was increased from ~800 gpm to ~1,000 gpm and RW-3 was taken off-line, as approved by NYSDEC on 20 April 2015. Influent concentrations presented above are therefore equivalent to RW-1 concentrations only.

**GM-38 Area Groundwater Remediation
Groundwater Treatment Plant
Naval Weapons Industrial Reserve Plant - Bethpage, NY
Air Sampling Results
May 2017**

DAR Parameters	May 2017	Discharge Goal ⁽¹⁾	May 2017	
			Influent	Effluent
Process Stream				
Sampling Date	N/A	N/A	5/11/17	
Average Flowrate	CFM	N/A	NR	7,465
Total Flow	ft ³	N/A	NR	333,228,672
Total Flow	m ³	N/A	NR	9,435,985
1,2-Dichloroethane	µg/m ³	N/A	4.4 J	1.1 J
cis 1,2-Dichloroethene	µg/m ³	> 100,000 ⁽²⁾	110	200
trans 1,2-Dichloroethene	µg/m ³		2.6 J	2.0 J
1,2-Dichloroethene (total)	µg/m ³	>100,000	110	200
Toluene	µg/m ³	N/A	0.74 J	ND
Total Xylene	µg/m ³	N/A	ND	ND
1,1,2-Trichloroethane	µg/m ³	N/A	ND	ND
Trichloroethene	µg/m ³	2,600	2000	2.9 J
Vinyl Chloride	µg/m ³	560	3.5 J	1.6 J
Tetrachloroethene	µg/m ³	5,100	370	1.3 J

Notes:

CFM - cubic feet per minute

DAR - Division of Air Resources

J - Estimated result between laboratory method detection limit and reporting limit

N/A - Not Applicable

NR - Not recorded

(1) Discharge goal as approved by NYSDEC's letter dated 31 October 2013.

(2) Discharge goal is for total 1,2-Dichloroethene.

(3) Summa canister for sample NWIRP-GM-38-AIR-VC23- was leaking upon arrival at the laboratory due to a crack in the stem line. No results are available for this location.

**GM-38 Area Groundwater Remediation
Groundwater Treatment Plant
Naval Weapons Industrial Reserve Plant - Bethpage, NY
Controlled Stack Emissions
May 2017**

DAR Parameters	Units	Discharge Goal ⁽¹⁾	May 2017
Sampling Date	N/A	N/A	5/11/17
Average Flowrate	CFM	N/A	7,465
Total Flow	ft ³	N/A	333,228,672
Total Flow	m ³	N/A	9,435,985
Trichloroethene	lb/hr	0.09	0.00008
Vinyl Chloride	lb/hr	0.02	0.00004
1,2 Dichloroethene	lb/hr	11	0.00559
1,2-Dichloroethane	lb/hr	N/A	0.00003
Toluene	lb/hr	N/A	0.00000
Total Xylene	lb/hr	N/A	0.00000
1,1,2-Trichloroethane	lb/hr	N/A	0.00000
Tetrachloroethene	lb/hr	0.18	0.00004

Notes:

CFM - cubic feet per minute

DAR - Division of Air Resources

N/A - Not Applicable

(1) Discharge goal as approved by NYSDEC's letter dated 31 October 2013.

JUNE 2017



SBA-certified 8(a), SDB Company

24 July 2017

Mr. Jason Pelton
New York State Department of Environmental Conservation
Division of Solid & Hazardous Materials
625 Broadway
Albany, NY 12233-7252

**Subject: GROUNDWATER DISCHARGE MONITORING/AIR EMISSION REPORT
GM-38 AREA, NWIRP BETHPAGE, NY; DER SITE # 1-30-003B-OU 2
JUNE 2017 REPORTING PERIOD**

Dear Mr. Pelton:

KOMAN Government Solutions, LLC (KGS) is submitting this monthly monitoring report of the groundwater discharge and air emission results for the Groundwater Treatment Plant (GWTP) located at the Former Naval Weapons Industrial Reserve Plant (NWIRP), Bethpage, NY, GM-38 Area. This report was prepared in accordance with GWTP operational requirements for DER Site # 1-30-003B-OU 2.

GWTP operational data from 1 June 2017 to 30 June 2017 are presented in Attachment A. There was no significant downtime for the GWTP during this reporting period.

As indicated in Attachment A, all permitted constituents were in compliance with regulatory guidelines during this reporting period.

Please contact me at 610-400-0622 with any questions or concerns you may have regarding this report.

Sincerely,

KOMAN Government Solutions, LLC

Stephane Roy
Project Manager

Attachment A: Groundwater and Air Sampling Results from June 2017

Cc: Donald Hesler - NYSDEC
Robert Wither - NYSDEC Division of Water
Jennifer Pilewski - NYSDEC – Region 1 Water Engineer
Gerard Ennis - Nassau County Department of Public Works
Tom Licata - Town of Oyster Bay
Lora Fly - NAVFAC Mid-Atlantic RPM
Greg Pearman – NWIRP Bethpage
GM-38 Copy

ATTACHMENT A
GROUNDWATER AND AIR SAMPLING RESULTS
JUNE 2017

**GM-38 Area Groundwater Remediation
Groundwater Treatment Plant
Naval Weapons Industrial Reserve Plant - Bethpage, NY
Discharge Monitoring Report
June 2017**

SPDES Parameters	June 2017					
	Daily Treated Effluent Maximum	Units	RW-1 ⁽¹⁾	RW-3	Combined Influent ⁽¹⁾	Treated Effluent
Well Depth	N/A	ft	445	530	N/A	N/A
Screened Interval	N/A	ft bgs	335-395 410-430	392-412 442-504	N/A	N/A
Sampling Date	N/A		6/1/17			
Effective Flowrate	1100	GPM	973	0.0	973	1,004
Total Flow	N/A	gallons	42,013,100	0	42,013,100	43,388,949
pH	5.5 - 8.5	SU	5.12	NS	5.12	6.11
Carbon Tetrachloride	NA	µg/L	0.26 J	NS	0.26 J	ND (1.0)
1,1-Dichloroethane	5	µg/L	1.6	NS	1.6	ND (1.0)
1,2-Dichloroethane	0.6	µg/L	ND (1.0)	NS	ND (1.0) J	ND (1.0)
1,1-Dichloroethene	5	µg/L	1.0	NS	1.0	ND (1.0)
cis 1,2-Dichloroethene	5	µg/L	6.8	NS	6.8	ND (1.0)
trans 1,2-Dichloroethene	5	µg/L	ND (1.0)	NS	ND (1.0) J	ND (1.0)
Tetrachloroethene	5	µg/L	25	NS	25	ND (1.0)
1,1,1-Trichloroethene	5	µg/L	0.99 J	NS	1.0	ND (1.0)
Trichloroethene	5	µg/L	110	NS	110	0.31 J
Vinyl Chloride	2	µg/L	0.21 J	NS	0.21 J	ND (1.0)
Mercury	0.00025	mg/L	ND (0.00010)	NS	ND (0.00010)	ND (0.00010)
Total Suspended Solids (TSS)	N/A	mg/L	ND (1.0)	NS	ND (1.0)	ND (1.0)

Notes:

J - Estimated result between laboratory method detection limit and reporting limit

ND - Not detected above laboratory method detection limit. Reporting Limit (RL) given in parentheses.

NR - Not Recorded

N/A - Not Applicable

NS - Not Sampled

(1) On 1 July 2015, the RW-1 flowrate was increased from ~800 gpm to ~1,000 gpm and RW-3 was taken off-line, as approved by NYSDEC on 20 April 2015. Influent concentrations presented above are therefore equivalent to RW-1 concentrations only.

**GM-38 Area Groundwater Remediation
Groundwater Treatment Plant
Naval Weapons Industrial Reserve Plant - Bethpage, NY
Air Sampling Results
June 2017**

DAR Parameters	June 2017	Discharge Goal ⁽¹⁾	June 2017	
			Influent	Effluent
Process Stream				
Sampling Date	N/A	N/A	6/1/17	
Average Flowrate	CFM	N/A	NR	7,479
Total Flow	ft ³	N/A	NR	323,075,520
Total Flow	m ³	N/A	NR	9,148,480
1,2-Dichloroethane	µg/m ³	N/A	4.0 J	ND
cis 1,2-Dichloroethene	µg/m ³	> 100,000 ⁽²⁾	110	130
trans 1,2-Dichloroethene	µg/m ³		2.0 J	1.2 J
1,2-Dichloroethene (total)	µg/m ³	>100,000	110	130
Toluene	µg/m ³	N/A	0.75 J	21
Total Xylene	µg/m ³	N/A	ND	ND
1,1,2-Trichloroethane	µg/m ³	N/A	ND	ND
Trichloroethene	µg/m ³	2,600	1800	13
Vinyl Chloride	µg/m ³	560	2.9 J	1.9 J
Tetrachloroethene	µg/m ³	5,100	380	4.0 J

Notes:

CFM - cubic feet per minute

DAR - Division of Air Resources

J - Estimated result between laboratory method detection limit and reporting limit

N/A - Not Applicable

NR - Not recorded

(1) Discharge goal as approved by NYSDEC's letter dated 31 October 2013.

(2) Discharge goal is for total 1,2-Dichloroethene.

**GM-38 Area Groundwater Remediation
Groundwater Treatment Plant
Naval Weapons Industrial Reserve Plant - Bethpage, NY
Controlled Stack Emissions
June 2017**

DAR Parameters	Units	Discharge Goal ⁽¹⁾	June 2017
Sampling Date	N/A	N/A	6/1/17
Average Flowrate	CFM	N/A	7,479
Total Flow	ft ³	N/A	323,075,520
Total Flow	m ³	N/A	9,148,480
Trichloroethene	lb/hr	0.09	0.00036
Vinyl Chloride	lb/hr	0.02	0.00005
1,2 Dichloroethene	lb/hr	11	0.00364
1,2-Dichloroethane	lb/hr	N/A	0.00000
Toluene	lb/hr	N/A	0.00059
Total Xylene	lb/hr	N/A	0.00000
1,1,2-Trichloroethane	lb/hr	N/A	0.00000
Tetrachloroethene	lb/hr	0.18	0.00011

Notes:

CFM - cubic feet per minute

DAR - Division of Air Resources

N/A - Not Applicable

(1) Discharge goal as approved by NYSDEC's letter dated 31 October 2013.

APPENDIX B

**NYSDEC AIR DISCHARGE LIMIT
DOCUMENTATION**

New York State Department of Environmental Conservation
Division of Environmental Remediation
Remedial Action Bureau A, 12th Floor
625 Broadway, Albany, New York 12233-7015
Phone: (518) 402-9620 FAX: (518) 402-9022



Joseph Martens
Commissioner

October 31, 2013

Lora Fly
Remedial Program Manager
NAVFAC Mid-Atlantic
Northeast IPT
9742 Maryland Avenue
Norfolk, VA, 23511-3095

RE: Northrop Grumman, Naval Weapons Industrial Reserve Plant (NWIRP) and Grumman Steel Los Sites, NYSDEC Site No.'s I-30-003 A & B.

Dear Ms. Fly:

Tetra Tech NUS Inc., on behalf of the Department of the Navy NAVFAC Midlantic, has submitted an application to remove the GM 38 Area Groundwater Extraction and Treatment system impregnated Xeolite™ resin from the air discharge treatment system. Currently, the air treatment system uses a combined activated carbon with permanganate impregnated resin treatment train. The New York State Department of Environmental Conservation (NYSDEC) has reviewed the Department of the Navy application and concurs with the findings presented.

The routine monitoring, as detailed in Table 1, clearly indicates that vinyl chloride, one of the main contaminants of concern, has diminished to almost non-detect, and discharge concentrations have dropped to below the limit to require air treatment for the other contaminants as well. However, NAVFAC Midlantic is still proposing activated carbon to reduce the other discharge contaminant levels. Therefore, the NYSDEC hereby approves the proposed changes to the GM 38 Area air treatment. The Xeolite™ resin beds will remain in place should reactivation, based on routine monitoring, be required.

If you have any questions in the interim, please contact me at (518)402-9620.

Sincerely,

Steven M. Scharf, P.E.
Project Engineer
Remedial Action Bureau A
Division of Environmental Remediation

EC: J. Swartwout
S. Scharf
W. Parish, Region 1
S. Karpinski, NYSDOH
E. Hannon, NGC
D. Stern, Arcadis
D. Brayack, TTNUS



NOR-01264

November 21, 2011

Mr. Stephen Scharf
New York Department of Environmental Conservation
Division of Environmental Remediation
Bureau of Remedial Action A
625 Broadway, 11th Floor
Albany, New York 12233-7015

Reference: CLEAN Contract No. N62470-08-D-1001
Contract Task Order WE06

Subject: Proposed Modification to Discharge Limits for Off Gas Volatile Organic Compounds (VOCs)
for Air Stripping Tower
GM-38 Offsite Groundwater Treatment Plant,
NWIRP Bethpage, New York

Dear Mr. Scharf:

On behalf of the Navy, please find enclosed a copy of the subject document. This document presents an evaluation of current concentrations of off gas VOCs from the GM-38 groundwater treatment plant air-stripping tower (prior to treatment with granular activated carbon). Maximum emission rates were re-evaluated due to decreasing maximum concentrations of target VOCs in un-treated air stripper AS-1 off gas. In addition, breakthrough of target contaminants (e.g., cis-1,2-dichloroethene) is beginning to occur in the granular activated carbon bed. Maximum emission rates were re-evaluated to provide a determination if breakthrough of contaminants would trigger the need for a replacement of the granular activated carbon bed.

Existing Discharge Goals were established in the "Final Operation, Maintenance and Monitoring Plan for Groundwater Treatment Plant GM-38 Area Groundwater Remediation" prepared by Tetra Tech EC (April 2010). Existing goals were based on emission estimates for a 95% reduction (see Attachment A), instead of being based on the original DAR-1 analysis of air stripper off gas. Emission estimates were calculated using the air stripper design flow rate of 8,000 cubic feet per minute (cfm), and previous contaminant discharge rates in pounds per hour (lb/hr). Original emission estimates are provided in Attachment B.

Proposed Revised Discharge Goals were calculated using an average flow rate of 9,200 cfm, January to March 2011 VOC loading rates (taken from the Quarterly Operations Report First Quarter 2011 from ECOR Federal Services), and the Actual Annual % of Annual Guideline Concentrations (AGCs), taken from the revised DAR-1 Model Output. The revised DAR-1 Model Output is provided in Attachment C. Existing Discharge Goals and Proposed Revised Discharge Goals are compared in tabular format in the first page of the attachment. Proposed Revised Discharge Goals for trichloroethene (TCE) are the same as previous. The proposed limit for tetrachloroethene (PCE) is approximately 10 times the previous limit, and vinyl chloride is approximately 2 times the previous limit. Revised Discharge Goals for 1,2-dichloroethene (goals are the same for cis-1,2-dichloroethene) are 100 times greater than previously established limits. It is recommended that these revised limits replace previous discharge goals, and treatment of air stripper off gas by granular activated carbon is recommended to continue for TCE and PCE, with no treatment required for vinyl chloride and 1,2-dichloroethene.

If you have any questions please contact Ms. Lora Fly, NAVFAC Mid-LANT, at (757) 341-2012.

Sincerely,



David D. Brayack, P.E.
Project Manager

Enclosure: (1) Proposed Modification to Discharge Limits for Off Gas Volatile Organic Compounds
(VOCs) for Air Stripping Tower
GM-38 Offsite Groundwater Treatment Plant

Distribution:

Mid-Lant, Lora Fly
NYSDEC (Albany), Henry Wilkie
NYSDOH (Troy), Steve Karpinski
NAVAIR, Richard Smith
USEPA, Carol Stein
NGC, Kent Smith
Tetra Tech NUS, Dave Brayack
ECOR Solutions, Al Taormina
Administrative Record
Public Repository
Project File

Tetra Tech NUS, Inc.

5700 Lake Wright Drive, Suite 309, Norfolk, VA 23502
Tel 757.461.3768 Fax 757.461.4148 www.ttnus.com

TABLE 1
COMPARISON OF EXISTING DISCHARGE GOALS WITH ACTUAL EMISSIONS AND PROPOSED DISCHARGE GOALS
AIR STRIPPING TOWER GM-38 OFFSITE GROUNDWATER TREATMENT PLANT
NWIRP BETHPAGE, NEW YORK

Chemical	Existing Discharge Goal		Actual January to March 2011 Values (Pre-Off Gas Treatment)		Proposed Revised Discharge Goals based on DAR-1 Analysis	
	Existing Discharge Loading Rate (pounds (lbs)/hour) ⁽¹⁾	Equivalent Existing Discharge Goals ($\mu\text{g}/\text{m}^3$) ⁽²⁾	Actual Jan-Mar 2011 Concentration ($\mu\text{g}/\text{m}^3$) ⁽³⁾	Actual VOC Loading Pre-Off Gas Treatment (lbs/hour) ⁽⁴⁾	Proposed Discharge Loading Rate (lbs/hour) ⁽⁵⁾	Equivalent Proposed Discharge Goal ($\mu\text{g}/\text{m}^3$) ⁽⁵⁾
TCE	0.09	2,600	10,000	0.345	0.09	2,600
PCE	0.02	580	6,800	0.234	0.18	5,100
Vinyl Chloride	0.01	290	76	0.003	0.02	560
1,2-Dichloroethene (total)	0.03	870	750	0.026	11	greater than 100,000

Notes:

⁽¹⁾Existing Discharge Goals are based on the design flow rate of 8,000 cfm. Existing Discharge Goals were taken from the Final Operations and Maintenance Plan for GM-38 Area Groundwater Remediation from Tetra Tech EC. Existing goals were based on emission estimates for a 95% reduction, and not the previous DAR-1 Analysis. Attachment B (provided at the end of this package) provides the original emission estimates.

⁽²⁾Existing Discharge Goals were calculated using the actual flow rate of 9,200 cfm and the existing discharge loading rate in pounds per hour (lb/hr).

⁽³⁾Values were taken from the Quarterly Operations Report First Quarter 2011 from ECOR Federal Services. Values were the maximum effluent concentration in off gas from air stripper stack AS-1 prior to treatment with vapor phase granular activated carbon (GAC), for the months of January, February and March 2011.

⁽⁴⁾Actual VOC Loading was calculated using an average flow rate of 9,200 cfm and the January-March 2011 concentrations. Existing off gas treatment consists of two stage vapor phase GAC followed by potassium permanganate zeolite media to provide additional treatment for vinyl chloride.

⁽⁵⁾Values were calculated using an average flow rate of 9,200 cfm, and the Actual Annual % of the AGCs from the 2011 DAR-1 Model Output to achieve air quality requirements.

ATTACHMENT A
2008 AIR PERMIT SUBMITTAL

New York State Department of Environmental Conservation Air Permit Application



DEC ID									
-									

APPLICATION ID									
-							/		

OFFICE USE ONLY									

Section I - Certification

Title V Certification	
I certify under penalty of law that this document and all attachments were prepared under my direction or supervision in accordance with a system designed to assure that qualified personnel properly gather and evaluate the information submitted. Based on my inquiry of the person or persons directly responsible for gathering the information [required pursuant to 6 NYCRR 201-6.3(d)] I believe the information is, true, accurate and complete. I am aware that there are significant penalties for submitting false information, including the possibility of fines and imprisonment for knowing violations.	
Responsible Official	Title
Signature	Date ____ / ____ / ____

State Facility Certification	
I certify that this facility will be operated in conformance with all provisions of existing regulations.	
Responsible Official	Title
Signature	Date ____ / ____ / ____

Section II - Identification Information

Title V Facility Permit <u>N/A</u>	<input type="checkbox"/> New	<input type="checkbox"/> Significant Modification	<input type="checkbox"/> Administrative Amendment	State Facility Permit <u>N/A</u>	<input type="checkbox"/> New	<input type="checkbox"/> Modification
<input type="checkbox"/> Renewal	<input type="checkbox"/> Minor Modification	General Permit Title: _____		General Permit Title: _____		
<input checked="" type="checkbox"/> Application involves construction of new facility			<input type="checkbox"/> Application involves construction of new emission unit(s)			

Owner/Firm			
Name <u>US Navy/NAVFAC Midlant</u>			
Street Address <u>9742 Maryland Ave, Bldg Z-144</u>			
City <u>Norfolk</u>	State <u>VA</u>	Country <u>US</u>	Zip <u>23511-3095</u>
Owner Classification <input checked="" type="checkbox"/> Federal		<input type="checkbox"/> State <input type="checkbox"/> Municipal	
<input type="checkbox"/> Corporation/Partnership		<input type="checkbox"/> Individual	
Taxpayer ID			
Facility <input type="checkbox"/> Confidential			
Name <u>Naval Weapons Industrial Reserve Plant (NWIRP) GM-38 Area</u>			
Location Address <u>Bethpage</u>			
<input type="checkbox"/> City / <input checked="" type="checkbox"/> Town / <input type="checkbox"/> Village <u>Oyster Bay, New York</u>			Zip <u>11714</u>
Project Description <input type="checkbox"/> Continuation Sheet(s)			
<u>Air stripping of groundwater to remove VOCs</u>			

Owner/Firm Contact Mailing Address			
Name (Last, First, Middle Initial) <u>Fly, Lora</u>		Phone No. (757)444-0781	
Affiliation <u>Department of the Navy</u>		Title <u>Remedial PM</u>	
Street Address <u>9742 Maryland Ave. Bldg Z-144</u>		Fax No. ()	
City <u>Norfolk</u>	State <u>VA</u>	Country <u>US</u>	Zip <u>23511-3095</u>
Facility Contact Mailing Address			
Name (Last, First, Middle Initial) <u>Same</u>		Phone No. ()	
Affiliation		Title	
Street Address		Fax No. ()	
City	State	Country	Zip

New York State Department of Environmental Conservation
Air Permit Application



DEC ID									
-									

Section III - Facility Information

Classification					
<input type="checkbox"/> Hospital	<input type="checkbox"/> Residential	<input type="checkbox"/> Educational/Institutional	<input type="checkbox"/> Commercial	<input checked="" type="checkbox"/> Industrial	<input type="checkbox"/> Utility

Affected States (Title V Only) N/A					
<input type="checkbox"/> Vermont	<input type="checkbox"/> Massachusetts	<input type="checkbox"/> Rhode Island	<input type="checkbox"/> Pennsylvania	Tribal Land: _____	
<input type="checkbox"/> New Hampshire	<input type="checkbox"/> Connecticut	<input type="checkbox"/> New Jersey	<input type="checkbox"/> Ohio	Tribal Land: _____	

SIC Codes									
9999									

Facility Description		<input type="checkbox"/> Continuation Sheet(s)
Groundwater Remediation by Air Stripping followed by Vapor-Phase GAC for emission control		

Compliance Statements (Title V Only) N/A	
<p>I certify that as of the date of this application the facility is in compliance with all applicable requirements: <input type="checkbox"/> YES <input type="checkbox"/> NO</p> <p>If one or more emission units at the facility are not in compliance with all applicable requirements at the time of signing this application (the 'NO' box must be checked), the noncomplying units must be identified in the "Compliance Plan" block on page 8 of this form along with the compliance plan information required. For all emission units at this facility that are operating <u>in compliance</u> with all applicable requirements complete the following:</p> <ul style="list-style-type: none"> <input type="checkbox"/> This facility will continue to be operated and maintained in such a manner as to assure compliance for the duration of the permit, except those units referenced in the compliance plan portion of Section IV of this application. <input type="checkbox"/> For all emission units, subject to any applicable requirements that will become effective during the term of the permit, this facility will meet all such requirements on a timely basis. <input type="checkbox"/> Compliance certification reports will be submitted at least once a year. Each report will certify compliance status with respect to each requirement, and the method used to determine the status. 	

Facility Applicable Federal Requirements N/A										<input type="checkbox"/> Continuation Sheet(s)
Title	Type	Part	Sub Part	Section	Sub Division	Paragraph	Sub Paragraph	Clause	Sub Clause	
	CERCLA	all substantive requirements								

Facility State Only Requirements										<input type="checkbox"/> Continuation Sheet(s)
Title	Type	Part	Sub Part	Section	Sub Division	Paragraph	Sub Paragraph	Clause	Sub Clause	

New York State Department of Environmental Conservation
Air Permit Application



DEC ID									
-									

Section III - Facility Information (continued)

Facility Compliance Certification										N/A	<input type="checkbox"/> Continuation Sheet(s)
Rule Citation											
Title	Type	Part	Sub Part	Section	Sub Division	Paragraph	Sub Paragraph	Clause	Sub Clause		
<input type="checkbox"/> Applicable Federal Requirement		<input type="checkbox"/> Capping		CAS No.			Contaminant Name				
<input type="checkbox"/> State Only Requirement											
Monitoring Information											
<input type="checkbox"/> Ambient Air Monitoring				<input type="checkbox"/> Work Practice Involving Specific Operations				<input type="checkbox"/> Record Keeping/Maintenance Procedures			
Description											
Work Practice		Process Material						Reference Test Method			
Type	Code	Description									
		Parameter						Manufacturer Name/Model No.			
Code		Description									
Limit			Limit Units								
Upper		Lower	Code	Description							
Averaging Method			Monitoring Frequency				Reporting Requirements				
Code	Description		Code	Description		Code	Description				

Facility Emissions Summary										<input type="checkbox"/> Continuation Sheet(s)
CAS No.		Contaminant Name				PTE		Actual (lbs/yr)		
						(lbs/yr)	Range Code			
NY075 - 00 - 5		PM-10								
NY075 - 00 - 0		PARTICULATES								
7446 - 09 - 5		SULFUR DIOXIDE								
NY210 - 00 - 0		OXIDES OF NITROGEN								
630 - 08 - 0		CARBON MONOXIDE								
7439 - 92 - 1		LEAD								
NY998 - 00 - 0		VOC				117				
NY100 - 00 - 0		HAP				110				
0079 - 01 - 6		Trichloroethylene				99				
00075 - 01 - 4		Vinyl Chloride				3.7				
00540 - 59 - 0		1,2-Dichloroethylene				7.3				
- -										
- -										

New York State Department of Environmental Conservation
Air Permit Application



DEC ID									
-									

Section IV - Emission Unit Information

Emission Unit Description										<input type="checkbox"/> Continuation Sheet(s)
EMISSION UNIT	0	-	0	0	E	U	1			
Air Stripper AS-1 for groundwater remediation, provided with activated carbon for emission control.										
The emission point is stack 00ST-1. The 2-stage VGAC is followed by a 3rd vessel containing a potassium permanganate zeolite media for increased VC capacity.										

Building					<input type="checkbox"/> Continuation Sheet(s)	
Building	Building Name			Length (ft)	Width (ft)	Orientation
BLDG-1	Treatment Plant			75	75	0

Emission Point							<input type="checkbox"/> Continuation Sheet(s)
EMISSION PT.	00ST1						
Ground Elev. (ft)	Height (ft)	Height Above Structure (ft)	Inside Diameter (in)	Exit Temp. (°F)	Cross Section		
90	40	15	36	80	Length (in)	Width (in)	
Exit Velocity (FPS)	Exit Flow (ACFM)	NYTM (E) (KM)	NYTM (N) (KM)	Building	Distance to Property Line (ft)	Date of Removal	
19	8020			BLDG-1	50		
EMISSION PT.							
Ground Elev. (ft)	Height (ft)	Height Above Structure (ft)	Inside Diameter (in)	Exit Temp. (°F)	Cross Section		
					Length (in)	Width (in)	
Exit Velocity (FPS)	Exit Flow (ACFM)	NYTM (E) (KM)	NYTM (N) (KM)	Building	Distance to Property Line (ft)	Date of Removal	

Emission Source/Control								<input type="checkbox"/> Continuation Sheet(s)
Emission Source		Date of Construction	Date of Operation	Date of Removal	Control Type		Manufacturer's Name/Model No.	
ID	Type				Code	Description		
AS-1	I				048	Granular Act. Carbon	Air Stripping Column	
Design Capacity	Design Capacity Units			Waste Feed		Waste Type		
	Code	Description		Code	Description	Code	Description	
Emission Source		Date of Construction	Date of Operation	Date of Removal	Control Type		Manufacturer's Name/Model No.	
ID	Type				Code	Description		
Design Capacity	Design Capacity Units			Waste Feed		Waste Type		
	Code	Description		Code	Description	Code	Description	

New York State Department of Environmental Conservation
Air Permit Application



DEC ID									
-									

Section IV - Emission Unit Information (continued)

Process Information										<input type="checkbox"/> Continuation Sheet(s)	
EMISSION UNIT 0 - 00 E U 1								PROCESS		PR 1	
Description											
The remedial system is air stripping, using a packed column at a groundwater flow rate of 1,100 gpm (plus 100 gpm recycle, for a total of 1,200 gpm). Vapor phase treatment includes the use of 3 vessels, a 2-stage GAC unit, followed by a 3rd vessel containing a potassium permanganate impregnated zeolite for increased VC capacity. Prior to entering the vapor-phase GAC adsorption system, the humidity of the air stripper exhaust is reduced to approximately 50 percent or less to optimize the efficiency of the vapor-phase GAC.											
Air Stripper AS-1: Existing. Type: Vertical, Cylindrical Construction: Aluminum											
Packing: 25-foot Jaeger Tripack. Dimensions: 10.0 ft. Dia x 47 ft. H											
Source Classification Code (SCC)		Total Thruput		Thruput Quantity Units							
		Quantity/Hr	Quantity/Yr	Code	Description						
<input type="checkbox"/> Confidential <input checked="" type="checkbox"/> Operating at Maximum Capacity <input type="checkbox"/> Activity with Insignificant Emissions		Operating Schedule		Building		Floor/Location					
		Hrs/Day	Days/Yr								
		24	365	BLDG-1		Main					
Emission Source/Control Identifier(s)											
AS-1											
EMISSION UNIT -								PROCESS			
Description											
Source Classification Code (SCC)		Total Thruput		Thruput Quantity Units							
		Quantity/Hr	Quantity/Yr	Code	Description						
<input type="checkbox"/> Confidential <input type="checkbox"/> Operating at Maximum Capacity <input type="checkbox"/> Activity with Insignificant Emissions		Operating Schedule		Building		Floor/Location					
		Hrs/Day	Days/Yr								
Emission Source/Control Identifier(s)											

New York State Department of Environmental Conservation
Air Permit Application



DEC ID									
-									

Section IV - Emission Unit Information (continued)

Emission Unit	Emission Point	Process	Emission Source	Emission Unit Applicable Federal Requirements										<input type="checkbox"/> Continuation Sheet(s)	
				Title	Type	Part	Sub Part	Section	Sub Division	Parag.	Sub Parag.	Clause	Sub Clause		
-															
-															
-															
-															

Emission Unit	Emission Point	Process	Emission Source	Emission Unit State Only Requirements										<input type="checkbox"/> Continuation Sheet(s)	
				Title	Type	Part	Sub Part	Section	Sub Division	Parag.	Sub Parag.	Clause	Sub Clause		
-															
-															
-															
-															

Emission Unit Compliance Certification											<input type="checkbox"/> Continuation Sheet(s)
Rule Citation											
Title	Type	Part	Sub Part	Section	Sub Division	Paragraph	Sub Paragraph	Clause	Sub Clause		
6	NYCRR	212									
<input checked="" type="checkbox"/> Applicable Federal Requirement				<input type="checkbox"/> State Only Requirement				<input type="checkbox"/> Capping			
Emission Unit	Emission Point	Process	Emission Source	CAS No.			Contaminant Name				
0-00EU1	00ST1	PR1	AS-1	00079 - 01 - 6			Trichloroethylene				
Monitoring Information											
<input type="checkbox"/> Continuous Emission Monitoring <input checked="" type="checkbox"/> Intermittent Emission Testing <input type="checkbox"/> Ambient Air Monitoring				<input type="checkbox"/> Monitoring of Process or Control Device Parameters as Surrogate <input type="checkbox"/> Work Practice Involving Specific Operations <input type="checkbox"/> Record Keeping/Maintenance Procedures							
Description											
Monthly grab samples analyzed for VOCs from the vapor phase treatment system influent, effluent and two intermediate locations.											
Work Practice		Process Material					Reference Test Method				
Type	Code	Description									
Parameter							Manufacturer Name/Model No.				
Code		Description									
23		Concentration									
Limit				Limit Units							
Upper		Lower		Code	Description						
3,125				255	micrograms per cubic meter						
Averaging Method			Monitoring Frequency			Reporting Requirements					
Code	Description		Code	Description		Code	Description				
01	Instantaneous		05	Monthly		10	Upon Request				

New York State Department of Environmental Conservation
Air Permit Application



DEC ID									
-									

Section IV - Emission Unit Information (continued)

Determination of Non-Applicability (Title V Only) N/A <input type="checkbox"/> Continuation Sheet(s)										
Rule Citation										
Title	Type	Part	Sub Part	Section	Sub Division	Paragraph	Sub Paragraph	Clause	Sub Clause	
Emission Unit		Emission Point		Process		Emission Source		<input type="checkbox"/> Applicable Federal Requirement <input type="checkbox"/> State Only Requirement		
Description										
Rule Citation										
Title	Type	Part	Sub Part	Section	Sub Division	Paragraph	Sub Paragraph	Clause	Sub Clause	
Emission Unit		Emission Point		Process		Emission Source		<input type="checkbox"/> Applicable Federal Requirement <input type="checkbox"/> State Only Requirement		
Description										
Process Emissions Summary <input type="checkbox"/> Continuation Sheet(s)										
EMISSION UNIT	0 - 0 0 E U 1						PROCESS	P	R	1
CAS No.	Contaminant Name			% Thruput	% Capture	% Control	ERP (lbs/hr)	ERP How Determined		
0079 - 01 - 6	Trichloroethylene					95	1.87	02		
PTE			Standard Units	PTE How Determined		Actual				
(lbs/hr)	(lbs/yr)	(standard units)				(lbs/hr)	(lbs/yr)			
0.09	99					02				
EMISSION UNIT	0 - 0 0 E U 1						PROCESS	P	R	1
CAS No.	Contaminant Name			% Thruput	% Capture	% Control	ERP (lbs/hr)	ERP How Determined		
00075 - 01 - 4	Vinyl Chloride					95	0.17	03		
PTE			Standard Units	PTE How Determined		Actual				
(lbs/hr)	(lbs/yr)	(standard units)				(lbs/hr)	(lbs/yr)			
0.01	3.7					02				
EMISSION UNIT	0 - 0 0 E U 1						PROCESS	P	R	1
CAS No.	Contaminant Name			% Thruput	% Capture	% Control	ERP (lbs/hr)	ERP How Determined		
000540 - 59 - 0	1,2-Dichloroethylene					95	0.6	02		
PTE			Standard Units	PTE How Determined		Actual				
(lbs/hr)	(lbs/yr)	(standard units)				(lbs/hr)	(lbs/yr)			
0.03	7.3					02				

New York State Department of Environmental Conservation
Air Permit Application



DEC ID									
-									

Section IV - Emission Unit Information (continued)

EMISSION UNIT		Emission Unit Emissions Summary				<input type="checkbox"/> Continuation Sheet(s)
0	-	0	0	E	U	1
CAS No.		Contaminant Name				
00107- 06 - 2		1,2-Dichloroethane				
ERP (lbs/yr)	PTE Emissions		Actual			
	(lbs/hr)	(lbs/yr)	(lbs/hr)	(lbs/yr)		
13.4	Below Reporting Threshold BRT					
CAS No.		Contaminant Name				
00108 - 88 - 3		Toluene				
ERP (lbs/yr)	PTE Emissions		Actual			
	(lbs/hr)	(lbs/yr)	(lbs/hr)	(lbs/yr)		
72.7	BRT		BRT			
CAS No.		Contaminant Name				
01330- 20 - 7		Xylene				
ERP (lbs/yr)	PTE Emissions		Actual			
	(lbs/hr)	(lbs/yr)	(lbs/hr)	(lbs/yr)		
77.1	BRT		BRT			
CAS No.		Contaminant Name				
-		1,1,2-Trichloroethane				
ERP (lbs/yr)	PTE Emissions		Actual			
	(lbs/hr)	(lbs/yr)	(lbs/hr)	(lbs/yr)		
	BRT		BRT			

Compliance Plan													<input type="checkbox"/> Continuation Sheet(s)
For any emission units which are <u>not in compliance</u> at the time of permit application, the applicant shall complete the following													
Consent Order			Certified progress reports are to be submitted every 6 months beginning ____ / ____ / ____										
Emission Unit	Process	Emission Source	Applicable Federal Requirement										
			Title	Type	Part	Sub Part	Section	Sub Division	Parag.	Sub Parag.	Clause	Sub Clause	
Remedial Measure / Intermediate Milestones										R/I	Date Scheduled		

New York State Department of Environmental Conservation
Air Permit Application



DEC ID											
-											

Section IV - Emission Unit Information (continued)

Request for Emission Reduction Credits										<input type="checkbox"/> Continuation Sheet(s)	
EMISSION UNIT -											
Emission Reduction Description											
Contaminant Emission Reduction Data											
Baseline Period ____ / ____ / ____ to ____ / ____ / ____						Reduction					
						Date		Method			
						/ /					
CAS No.			Contaminant Name			ERC (lbs/yr)					
						Netting			Offset		
-											
-											
-											
Facility to Use Future Reduction											
Name						APPLICATION ID					
						- / -					
Location Address											
<input type="checkbox"/> City / <input type="checkbox"/> Town / <input type="checkbox"/> Village						State			Zip		

Use of Emission Reduction Credits										<input type="checkbox"/> Continuation Sheet(s)	
EMISSION UNIT -											
Proposed Project Description											
Contaminant Emissions Increase Data											
CAS No.			Contaminant Name			PEP (lbs/yr)					
-											
Statement of Compliance											
<input type="checkbox"/> All facilities under the ownership of this "ownership/firm" are operating in compliance with all applicable requirements and state regulations including any compliance certification requirements under Section 114(a)(3) of the Clean Air Act Amendments of 1990, or are meeting the schedule of a consent order.											
Source of Emission Reduction Credit - Facility											
Name						PERMIT ID					
						- / -					
Location Address											
<input type="checkbox"/> City / <input type="checkbox"/> Town / <input type="checkbox"/> Village						State			Zip		
Emission Unit		CAS No.		Contaminant Name		ERC (lbs/yr)					
						Netting			Offset		
-		-									
-		-									
-		-									



DEC ID									
-									

Supporting Documentation

- P.E. Certification (form attached)
- List of Exempt Activities (form attached)
- Plot Plan
- Methods Used to Determine Compliance (form attached)
- Calculations
- Air Quality Model (____ / ____ / ____)
- Confidentiality Justification
- Ambient Air Monitoring Plan (____ / ____ / ____)
- Stack Test Protocols/Reports (____ / ____ / ____)
- Continuous Emissions Monitoring Plans/QA/QC (____ / ____ / ____)
- MACT Demonstration (____ / ____ / ____)
- Operational Flexibility: Description of Alternative Operating Scenarios and Protocols
- Title IV: Application/Registration
- ERC Quantification (form attached)
- Use of ERC(s) (form attached)
- Baseline Period Demonstration
- Analysis of Contemporaneous Emission Increase/Decrease
- LAER Demonstration (____ / ____ / ____)
- BACT Demonstration (____ / ____ / ____)
- Other Document(s): _____ (____ / ____ / ____)
 _____ (____ / ____ / ____)
 _____ (____ / ____ / ____)
 _____ (____ / ____ / ____)
 _____ (____ / ____ / ____)
 _____ (____ / ____ / ____)
 _____ (____ / ____ / ____)
 _____ (____ / ____ / ____)
 _____ (____ / ____ / ____)
 _____ (____ / ____ / ____)
 _____ (____ / ____ / ____)
 _____ (____ / ____ / ____)
 _____ (____ / ____ / ____)

ATTACHMENT B

2008 EMISSION ESTIMATES BASED ON 95% REMOVAL

**ATTACHMENT 1
Emission Estimate**

POTENTIAL EMISSION ESTIMATES,
USED TO DEVELOP 95% REDUCTION
OF EMISSION VALUES AS BASED ON
INFLUENT GROUNDWATER CONCENTRATIONS
(95% REDUCTION OF EMISSION
VALUES ARE PROVIDED
ON PAGE 7 OF THE 2008 AIR
PERMIT APPLICATION PROCESS
EMISSIONS SUMMARY)

Feed Water Flow 1,100 gpm: max or normal
250 m³/hr
Water Flow Including Recycle 1,200 gpm: max or normal
273 m³/hr
Air Flow 8,000 cfm
13,592 m³/hr
A/W vol ratio 50

EXAMPLE EMISSION CALC: Vinyl Chloride
4.8 ug/L x 1000 L/m³ x 250 m³ water/13,623 m³ air = 88 ug/m³

Name	CAS Number	Toxicity: H/M/L ²	VOC ³	HAP ⁴	GW Conc. ¹		Effluent Conc. ¹		Uncontrolled Stripper Exhaust							
					Max ug/L	Avg ug/L	Max ug/L	Avg ug/L	Max lb/day	Avg lb/day	Max lb/hr	Avg lb/hr	Max gm/sec	Avg gm/sec	Max ug/m ³	Avg ug/m ³
1,1,1-Trichloroethane (Methyl Chloroform)	00071-55-6	L	No	Yes	3	3.0			0.04	0.04	0.00	0.00	2.08E-04	2.08E-04	55	55
1,1,2-Trichloroethane	00079-00-5	M	Yes	Yes	3.5	0.3			0.05	0.00	0.00	0.00	2.43E-04	2.08E-05	64	6
1,1-Dichloroethane	00075-34-3	L	Yes	Yes	4	0.7			0.05	0.01	0.00	0.00	2.77E-04	4.85E-05	74	13
1,2-Dichloroethane	00107-06-2	M	Yes	Yes	3	1.0	0.3	0.1	0.04	0.01	0.00	0.00	1.87E-04	6.24E-05	55	18
1,1-Dichloroethylene (Vinylidene Chloride)	00075-35-4	M	Yes	Yes	9	1.6			0.12	0.02	0.00	0.00	6.24E-04	1.11E-04	165	29
1,2-Dichloroethylene	00540-59-0	M	Yes	No	1,100	31.5	1.3	0.0	14.51	0.42	0.60	0.02	7.62E-02	2.18E-03	20,219	579
Benzene	00071-43-2	H	Yes	Yes	4	0.1			0.05	0.00	0.00	0.00	2.77E-04	6.94E-06	74	2
Carbon Tetrachloride	00056-23-5	H	Yes	Yes	4	0.1			0.05	0.00	0.00	0.00	2.77E-04	6.94E-06	74	2
Chlorobenzene (Monochlorobenzene)	00108-90-7	M	Yes	Yes	1	0.1			0.01	0.00	0.00	0.00	6.94E-05	6.94E-06	18	2
Chloroform	00067-66-3	M	Yes	Yes	2	0.8			0.03	0.01	0.00	0.00	1.39E-04	5.55E-05	37	15
Methyl Tert Butyl Ether	01634-04-4	M	Yes	Yes	2	0.1			0.03	0.00	0.00	0.00	1.39E-04	6.94E-06	37	2
Tetrachloroethylene	00127-18-4	M	Yes	Yes	900	33.8	0.9	0.0	11.88	0.45	0.49	0.02	6.24E-02	2.34E-03	16,543	621
Toluene	00108-88-3	L	Yes	Yes	15	0.7			0.20	0.01	0.01	0.00	1.04E-03	4.85E-05	276	13
Trichloroethylene	00079-01-6	M	Yes	Yes	3,400	411.5	4.5	0.5	44.86	5.43	1.87	0.23	2.35E-01	2.85E-02	62,494	7,564
Vinyl chloride	00075-01-4	H	Yes	Yes	300	4.8	0.0	0.0	3.96	0.06	0.17	0.00	2.08E-02	3.33E-04	5,514	88
Xylenes	01330-20-7	M	Yes	Yes	16	0.2			0.21	0.00	0.01	0.00	1.11E-03	1.39E-05	294	4
Total VOCs					5,764	487.3	7.0	0.6	76.05	6.43	3.17	0.27				
Total HAPs					4,667	458.8	5.7	0.6	61.57	6.05	2.57	0.25				

Total Uncontrolled VOC 2,347 lb/yr
Total Uncontrolled HAP 2,209 lb/yr

1. Source: "GM-38 Groundwater Remedy Analysis Report", February 2003
2. Source: DAR-1 AGC/SGC Tables, NYSDEC Division of Air Resources, Air Toxics Section, September 10, 2007.
3. Source: 6 NYCRR Part 200.1(cg)
4. Source: 6 NYCRR Part 200.1(ag)

**ATTACHMENT 1
Emission Estimate**

Feed Water Flow 1,100 gpm: max or normal
250 m³/hr
Water Flow Including Recycle 1,200 gpm: max or normal
273 m³/hr
Air Flow 8,000 cfm
13,592 m³/hr
A/W vol ratio 50

Controlled Stripper Exhat

Name	CAS Number	Toxicity: H/M/L ²	VOC ³	HAP ⁴	Control by	Max	Avg	Max	Avg
					GAC	lb/day	lb/day	gm/sec	gm/sec
1,1,1-Trichloroethane (Methyl Chloroform)	00071-55-6	L	No	Yes	95%	0.00	0.00	1.04E-05	1.04E-05
1,1,2-Trichloroethane	00079-00-5	M	Yes	Yes	95%	0.00	0.00	1.21E-05	1.04E-06
1,1-Dichloroethane	00075-34-3	L	Yes	Yes	95%	0.00	0.00	1.39E-05	2.43E-06
1,2-Dichloroethane	00107-06-2	M	Yes	Yes	95%	0.00	0.00	9.36E-06	3.12E-06
1,1-Dichloroethylene (Vinylidene Chloride)	00075-35-4	M	Yes	Yes	95%	0.01	0.00	3.12E-05	5.55E-06
1,2-Dichloroethylene	00540-59-0	M	Yes	No	95%	0.73	0.02	3.81E-03	1.09E-04
Benzene	00071-43-2	H	Yes	Yes	95%	0.00	0.00	1.39E-05	3.47E-07
Carbon Tetrachloride	00056-23-5	H	Yes	Yes	95%	0.00	0.00	1.39E-05	3.47E-07
Chlorobenzene (Monochlorobenzene)	00108-90-7	M	Yes	Yes	95%	0.00	0.00	3.47E-06	3.47E-07
Chloroform	00067-66-3	M	Yes	Yes	95%	0.00	0.00	6.94E-06	2.77E-06
Methyl Tert Butyl Ether	01634-04-4	M	Yes	Yes	95%	0.00	0.00	6.94E-06	3.47E-07
Tetrachloroethylene	00127-18-4	M	Yes	Yes	95%	0.59	0.02	3.12E-03	1.17E-04
Toluene	00108-88-3	L	Yes	Yes	95%	0.01	0.00	5.20E-05	2.43E-06
Trichloroethylene	00079-01-6	M	Yes	Yes	95%	2.24	0.27	1.18E-02	1.43E-03
Vinyl chloride	00075-01-4	H	Yes	Yes	95%	0.20	0.00	1.04E-03	1.66E-05
Xylenes	01330-20-7	M	Yes	Yes	95%	0.01	0.00	5.55E-05	6.94E-07
Total VOCs						3.80	0.32		
Total HAPs						3.08	0.30		
						Total Controlled VOC	117 lb/yr		
						Total Controlled HAP	110 lb/yr		

1. Source: "GM-38 Groundwater Remedy Analysis Report", February 2003
2. Source: DAR-1 AGC/SGC Tables, NYSDEC Division of Air Resources, Air Tox
3. Source: 6 NYCRR Part 200.1(cg)
4. Source: 6 NYCRR Part 200.1(ag)

ATTACHMENT C

2011 DISCHARGE GOALS AND 2011 DAR-1 ANALYSIS

Tetra Tech NUS		STANDARD CALCULATION SHEET	
CLIENT: US CLEAN	FILE No:	BY: SK	PAGE: 1 of 1
SUBJECT: Calculation of Current Discharge Goals GM-38 Area NWIRP Bethpage, New York		CHECKED BY:	DATE: 9/7/2011

1. Purpose:

To calculate current discharge goals for Trichloroethene (TCE), Tetrachloroethene (PCE), Vinyl Chloride, cis 1,2-Dichloroethene, and 1,2-Dichloroethene (total), for treatment of off-gas from the air stripper stack AS-1.

2. Approach:

From the Contaminant Assessment Summary of the DAR-1 Model output for TCE, PCE, Vinyl Chloride, cis 1,2-Dichloroethene, and 1,2-Dichloroethene (total) (see DAR-1 output for analysis inputs), use the Actual Annual % of the Annual Guideline Concentration (AGC), a current average flow rate of 9,200 cubic feet per minute (cfm), and influent chemical emission rates in pounds per hour (lb/hour) and pounds per year (lb/year) to back calculate current discharge goals.

3. Calculation of Current Discharge Goals:

Chemical	Current Actual Annual % of AGC ⁽¹⁾	Current Maximum Concentration (µg/m ³) ⁽²⁾	Current Chemical Emission Rate Prior to Treatment (lb/hour) ⁽³⁾	Current Chemical Emission Rate Prior to Treatment (lb/year) ⁽³⁾	Calculated Discharge Goal (lb/hr) ⁽⁴⁾	Calculated Discharge Goal (lb/year) ⁽⁴⁾	Maximum Allowable Concentration (µg/m ³) ⁽⁴⁾
TCE	390.6	10,000	0.3446	3,019	0.0882	770	2,600
PCE	132.8	6,800	0.2344	2,053	0.1764	1,500	5,100
Vinyl Chloride	13.49	76	0.0026	22.94	0.0194	170	560
cis 1,2-Dichloroethene	0.2322	750	0.0258	226.4	11.13	98,000	320,000
1,2-Dichloroethene (total)	0.2322	750	0.0258	226.4	11.13	98,000	320,000

Notes:

⁽¹⁾Actual Annual % of the AGCs is from the attached DAR-1 Model Output.

⁽²⁾Values were taken from the Quarterly Operations Report First Quarter 2011 (June 2011) from ECOR Federal Services. Values were the maximum effluent concentration in off gas from air stripper stack AS-1 for the months of January, February, and March 2011.

⁽³⁾Chemical Emission Rates were calculated from maximum concentrations and an average flow rate of 9,200 cfm.

⁽⁴⁾Discharge Goals are based on a flow of 9,200 cfm, and calculated from the Actual Annual % of the AGCs from the DAR-1 Model Output to achieve air quality requirements. The summary of additional inputs for this model run is provided in the DAR-1 Model Output. Stack height is 40 feet, and the property line was evaluated at a distance of 50 feet.

BETHPAGE SITE GM-38 OFF-SITE GROUNDWATER AIR STRIPPER STACK EMISSIONS
 DAR-1 MODEL OUTPUT, POINT SOURCE (STACK EMISSIONS) TYPE
 INCLUDES ISCLT MODELING SUMMARY

- I. Summary of Inputs for Model Run to Nearest Property Line (50 feet), worst case scenario (highest contaminant concentrations seen in first quarter 2011 in untreated effluent from Air Stripper AS-1 prior to treatment with granular activated carbon (GAC))

Chemical	CAS No. 00079-01-6 (TCE)	CAS No. 00127-18-4 (PCE)	CAS No. 00075-01-4 (Vinyl Chloride)	CAS No. 00156-59-2 (cis 1,2- Dichloroethene)	CAS No. 00540-59-0 (1,2- Dichloroethene, total)
Emission Rate Prior to Treatment ⁽¹⁾ (lb/hour)	0.3444	0.2342	0.0026	0.0258	0.0258
Emission Rate Prior to Treatment ⁽¹⁾ (lb/year)	3,017	2,052	22.93	226.0	226.0
Maximum Concentration of Untreated Off Gas ($\mu\text{g}/\text{m}^3$) ⁽¹⁾	10,000	6,800	76	750	750
Annual Guideline Concentration (AGC) ($\mu\text{g}/\text{m}^3$)	0.5	1.0	0.11	63	63
Short-term Guideline Concentration (SGC) ($\mu\text{g}/\text{m}^3$)	14,000	1,000	180,000	--	--

HA	Height Above stack/ maximum height of plume (HA, feet)	15
SH	Stack Height/Treatment Building Air Stack (SH, feet)	40
D	Stack Diameter (D, inches)	36
T	Stack Exit Temperature (T, degrees Fahrenheit)	80
V	Stack Exit Velocity (V, ft/sec)	21.69
Q ⁽²⁾	Stack Exit Flow Rate [Q, Actual Cubic Feet per Minute (ACFM)]	9,200
Dpl	Shortest Distance from Source Building (Treatment Building) to Property Line (Dpl, feet) for point sources	50
BW	Building Width (BW, feet) of Source Building (Treatment Building) for point sources	75
BL	Building Length (BL, feet) of Source Building (Treatment Building)	75
Q	Actual Hourly Emission Rate (lbs/hour) for source contaminant	Chemical specific, see above
Qa	Actual Annual Emission Rate (lbs/year) for source contaminant	Chemical specific, see above

⁽¹⁾ Emission rates and maximum concentration values were taken from the Quarterly Operations Report First Quarter (June 2011) as provided by ECOR Services, using January, February, and March 2011 maximum rates of untreated off gas from Air Stripper AS-1 in the

GM-38 Treatment Building. Emission rates are based on continuous operation 24 hours per day, 7 days a week, 52 weeks a year, or approximately 8,760 hours of operation.

⁽²⁾ "Q" is an average value of January and February 2011 monthly flow rates. Effective water and vapor flow rates were reduced during the reporting period of March due to a shutdown of the Treatment Plant on March 23, 2011.

II. Contaminant Assessment Summary of TCE, PCE, Vinyl Chloride, cis 1,2-Dichloroethene, and 1,2-Dichloroethene (total):

CONTAMINANT ASSESSMENT SUMMARY OF DAR-1 ANALYSIS						9/ 8/11
						Page
						1
	SHORT-TERM	CAVITY	POINT or AREA SOURCE			
	AGC	MAXIMUM	ACTUAL	POTENTIAL	ACTUAL	
CAS NUMBER	ug/m3	(Cav. Pt. Area)	ANNUAL	ANNUAL	ANNUAL	
		% OF SGC	% OF AGC	% OF AGC	% OF AGC	
00075-01-4	0.11000000	0.0005	0.0000	13.3889	13.4948	
00079-01-6	0.50000000	0.7757	0.0000	390.1734	390.6266	
00127-18-4	1.00000000	7.3852	0.0000	132.6635	132.8415	
00156-59-2	63.00000000	0.0000	0.0000	0.2320	0.2322	
00540-59-0	63.00000000	0.0000	0.0000	0.2320	0.2322	
SUMMARY TOTALS		8.1614	0.0000	536.6897	537.4274	

III. Contaminant Impact Summary of TCE, PCE, Vinyl Chloride, cis 1,2-Dichloroethene, and 1,2-Dichloroethene (total):

CONTAMINANT IMPACT SUMMARY OF DAR-1 ANALYSIS						9/ 8/11
						Page
						1
	SHORT-TERM	CAVITY	POINT or AREA SOURCE			
	AGC	MAXIMUM	ACTUAL	POTENTIAL	ACTUAL	
CAS NUMBER	ug/m3	(Cav. Pt. Area)	ANNUAL	ANNUAL	ANNUAL	
		ug/m3	ug/m3	ug/m3	ug/m3	
00075-01-4	0.11000000	0.81988204	0.00000000	0.01472780	0.01484433	
00079-01-6	0.50000000	108.60282900	0.00000000	1.95086694	1.95313296	
00127-18-4	1.00000000	73.85244750	0.00000000	1.32663476	1.32841504	
00156-59-2	63.00000000	8.13575172	0.00000000	0.14614509	0.14630693	
00540-59-0	63.00000000	8.13575172	0.00000000	0.14614509	0.14630693	

IV. Contaminant Impact Summary Step by Step Menu for TCE:

```

*****
NWIRP BETHPAGE GM-38 AREA      BETHPAGE      OYSTER BAY, NEW
EMISSION POINT =          TOTAL      CAS NUMBER = 00079-01-6      SIC = 0
  AGC =          0.500000000 ug/m3      SGC =          14000.000000 ug/m3
  STACK: HA=    15., SH=   40., D=   36., T=   80., U=   21.69, q=  9200.00
BUILDING: Dpl=   50., BW=   75., BL=   75., %CONTROL=  0.0000
** Reported Hourly Emission Rate <Q> is equal to          0.344400000 lbs/hour.
** Reported Annual Emission Rate <Qa> is equal to          3017.000000 lbs/year.
II.B.  REFINED CAVITY IMPACT METHOD <DAR-1, APPENDIX B>.
II.B.1.  Shortest Distance from building to Property Line <  50. feet >
         is less than or equal to the cavity length, or 3 building
         heights <  75. feet >. Therefore, this building will have
         cavity impacts <if they occur> at receptors off plant property.
II.B.2.  The largest building dimension <  75. feet > is greater than or
         equal to the building height <  25. feet >. Therefore, the
         computer will NOT redefine the cavity length.
II.B.3.  Stack height <  40. feet > is greater than cavity height
         <  38. feet >. Therefore, this source does not contribute to
         the buildings cavity impact. The Computer will assume the
         CAVITY Annual Impact equals 0.00 ug/m3.
II.C.  CAVITY Annual Impact <  0.000 ug/m3 > is less than AGC
         <  0.500 ug/m3 >.
III.A.  STANDARD POINT SOURCE METHOD <DAR-1, APPENDIX B>.
III.A.1.b.  Momentum flux, Fm, is equal to  1000.331 ft<4>/sec<2>.
III.A.1.b.  Effective stack height, he, is equal to  51.001 feet.
III.A.2.  STANDARD POINT SOURCE Actual Annual Impact is equal
         to  2.604 ug/m3 for  8760. hours/year of operation.
III.A.3.  STANDARD POINT SOURCE Potential Annual Impact is equal
         to  2.601 ug/m3 assuming 8,760 hours/year of operation.
III.A.4.a.  Stack height to building height ratio is greater than
         1.5, but less than 2.5. Computer will multiply actual
         annual & potential annual impacts by 0.75 factor.

```


III.A.5. STANDARD POINT SOURCE Short-Term Impact is calculated below using the DAR-1 SOFTWARE PROGRAM SHORT-TERM METHOD.

III.D. STANDARD POINT SOURCE Actual Annual Impact < 1.953 ug/m3 > is greater than AGC < 0.500 ug/m3 >.

**** Refer to DAR-1 Section III.D.1. A refined site ****
 **** specific modeling analysis may be required. ****

III.D. STANDARD POINT SOURCE Potential Annual Impact < 1.951 ug/m3 > is greater than AGC < 0.500 ug/m3 >.

**** Potential Annual Impact is based upon 8760 hours/year ****
 **** operation instead of reported 8760. hours/year. ****

2.0 DAR-1 SOFTWARE PROGRAM SHORT-TERM METHOD.
 See "Technical Reference for the Screening Procedures of the DAR-1 Software Program, Wade/Sedefian," 1/11/94.

2.2 CAVITY Short-Term Impact is equal to 0.00 ug/m3 as the plume escaped the cavity region: $h_s < 40. \text{ feet} > > h_c < 26. \text{ feet} >$.

II.C. CAVITY Short-Term Impact < 0.000 ug/m3 > is less than SGC < 14000.000 ug/m3 >.

2.3 Momentum flux, F_m , is equal to 1000.331 ft(4)/sec(2).

2.3 Effective stack height, h_e , is equal to 51.001 feet.

2.4 Maximum non-downwash GEP stack Short-Term Impact (CSTP) is equal to 38.826 ug/m3, for $h_s/h_b = 1.60$

2.5 Maximum downwash Short-Term Impact (CSTD) is equal to 129.908 ug/m3, for: $h_s/h_b = 1.60$ and ESH = 51. feet.

2.6 Adjusted maximum downwash Short-Term (CSTD) is equal to 108.603 ug/m3, for: RF = 0.84

III.D. Maximum non-cavity Short-Term Impact (CST: 108.603 ug/m3 > is less than the SGC < 14000.000 ug/m3 > for the point source.

2.7 Maximum Short-Term cavity, point, or area source impact (SHORT-TERM MAXIMUM, (Cav,Pt,Area)) equals 108.603 ug/m3 and is reported in the ANALYSIS MENU. This value is less than the SGC < 14000.000 ug/m3 >.

V. Contaminant Impact Summary Step by Step Menu for PCE:

```

*****
NWIRP BETHPAGE GM-38 AREA          BETHPAGE          OYSTER BAY, MEV
EMISSION POINT =          TOTAL          CAS NUMBER = 00127-18-4          SIC = 0
AGC =          1.000000000 ug/m3          SGC =          1000.000000 ug/m3
STACK: HA=          15., SH=          40., D=          36., T=          80., U=          21.69, q=          9200.00
BUILDING: Dpl=          50., BW=          75., BL=          75., %CONTROL=          0.0000
** Reported Hourly Emission Rate (Q) is equal to          0.234200000 lbs/hour.
** Reported Annual Emission Rate (Qa) is equal to          2052.000000 lbs/year.
II.B. REFINED CAVITY IMPACT METHOD (DAR-1, APPENDIX B).
II.B.1. Shortest Distance from building to Property Line ( 50. feet )
is less than or equal to the cavity length, or 3 building
heights ( 75. feet ). Therefore, this building will have
cavity impacts (if they occur) at receptors off plant property.
II.B.2. The largest building dimension ( 75. feet ) is greater than or
equal to the building height ( 25. feet ). Therefore, the
computer will NOT redefine the cavity length.
II.B.3. Stack height ( 40. feet ) is greater than cavity height
( 38. feet ). Therefore, this source does not contribute to
the buildings cavity impact. The Computer will assume the
CAVITY Annual Impact equals 0.00 ug/m3.
II.C. CAVITY Annual Impact ( 0.000 ug/m3 ) is less than AGC
( 1.000 ug/m3 ).
III.A. STANDARD POINT SOURCE METHOD (DAR-1, APPENDIX B).
III.A.1.b. Momentum flux, Fm, is equal to 1000.331 ft<4>/sec<2>.
III.A.1.b. Effective stack height, he, is equal to 51.001 feet.
III.A.2. STANDARD POINT SOURCE Actual Annual Impact is equal
to 1.771 ug/m3 for 8762. hours/year of operation.
III.A.3. STANDARD POINT SOURCE Potential Annual Impact is equal
to 1.769 ug/m3 assuming 8,760 hours/year of operation.
III.A.4.a. Stack height to building height ratio is greater than
1.5, but less than 2.5. Computer will multiply actual
annual & potential annual impacts by 0.75 factor.

```


III.A.5. STANDARD POINT SOURCE Short-Term Impact is calculated below using the DAR-1 SOFTWARE PROGRAM SHORT-TERM METHOD.

III.D. STANDARD POINT SOURCE Actual Annual Impact (1.328 ug/m3) is greater than AGC (1.000 ug/m3).

**** Refer to DAR-1 Section III.D.1. A refined site specific modeling analysis may be required. ****

III.D. STANDARD POINT SOURCE Potential Annual Impact (1.327 ug/m3) is greater than AGC (1.000 ug/m3).

**** Potential Annual Impact is based upon 8760 hours/year operation instead of reported 8762. hours/year. ****

2.0 DAR-1 SOFTWARE PROGRAM SHORT-TERM METHOD. See "Technical Reference for the Screening Procedures of the DAR-1 Software Program, Wade/Sedefian," 1/11/94.

2.2 CAVITY Short-Term Impact is equal to 0.00 ug/m3 as the plume escaped the cavity region: hc(40. feet) > hc(26. feet).

II.C. CAVITY Short-Term Impact (0.000 ug/m3) is less than SGC (1000.000 ug/m3).

2.3 Momentum Flux, F_m , is equal to 1000.331 ft⁴/sec².

2.3 Effective stack height, h_e , is equal to 51.001 feet.

2.4 Maximum non-downwash GEP stack Short-Term Impact (CSTP) is equal to 26.403 ug/m3, for $h_c/h_b = 1.60$

2.5 Maximum downwash Short-Term Impact (CSTD) is equal to 88.340 ug/m3, for: $h_c/h_b = 1.60$ and ESH = 51. feet.

2.6 Adjusted maximum downwash Short-Term (CSTD) is equal to 73.852 ug/m3, for: RF = 0.84

III.D. Maximum non-cavity Short-Term Impact (CST: 73.852 ug/m3) is less than the SGC (1000.000 ug/m3) for the point source.

2.7 Maximum Short-Term cavity, point, or area source impact (SHORT-TERM MAXIMUM, (Cav,Pt,Area)) equals 73.852 ug/m3 and is reported in the ANALYSIS MENU. This value is less than the SGC (1000.000 ug/m3).

VI. Contaminant Impact Summary Step by Step Menu for Vinyl Chloride:

```

*****
NWIRP BETHPAGE GM-38 AREA          BETHPAGE          OYSTER BAY, NEW
EMISSION POINT =          TOTAL          CAS NUMBER = 00075-01-4          SIC = 0
AGC =          0.110000000 ug/m3          SGC =          180000.000000 ug/m3
STACK: HA=          15., SH=          40., D=          36., I=          80., U=          21.69, q=          9200.00
BUILDING: Dpl=          50., BW=          75., BL=          75., %CONTROL=          0.0000
** Reported Hourly Emission Rate <Q> is equal to          0.002600000 lbs/hour.
** Reported Annual Emission Rate <Qa> is equal to          22.930000 lbs/year.
II.B. REFINED CAVITY IMPACT METHOD <DAR-1, APPENDIX B>.
II.B.1. Shortest Distance from building to Property Line < 50. feet >
is less than or equal to the cavity length, or 3 building
heights < 75. feet >. Therefore, this building will have
cavity impacts <if they occur> at receptors off plant property.
II.B.2. The largest building dimension < 75. feet > is greater than or
equal to the building height < 25. feet >. Therefore, the
computer will NOT redefine the cavity length.
II.B.3. Stack height < 40. feet > is greater than cavity height
< 38. feet >. Therefore, this source does not contribute to
the buildings cavity impact. The Computer will assume the
CAVITY Annual Impact equals 0.00 ug/m3.
II.C. CAVITY Annual Impact < 0.000 ug/m3 > is less than AGC
< 0.110 ug/m3 >.
III.A. STANDARD POINT SOURCE METHOD <DAR-1, APPENDIX B>.
III.A.1.b. Momentum flux, Fm, is equal to 1000.331 ft<4>/sec<2>.
III.A.1.b. Effective stack height, he, is equal to 51.001 feet.
III.A.2. STANDARD POINT SOURCE Actual Annual Impact is equal
to 0.020 ug/m3 for 8819. hours/year of operation.
III.A.3. STANDARD POINT SOURCE Potential Annual Impact is equal
to 0.020 ug/m3 assuming 8,760 hours/year of operation.
III.A.4.a. Stack height to building height ratio is greater than
1.5, but less than 2.5. Computer will multiply actual
annual & potential annual impacts by 0.75 factor.

```


III.A.5. STANDARD POINT SOURCE Short-Term Impact is calculated below using the DAR-1 SOFTWARE PROGRAM SHORT-TERM METHOD.

III.D. STANDARD POINT SOURCE Actual Annual Impact < 0.015 ug/m3 > is less than AGC < 0.110 ug/m3 >.

III.D. STANDARD POINT SOURCE Potential Annual Impact < 0.015 ug/m3 > is less than AGC < 0.110 ug/m3 >.

**** Potential Annual Impact is based upon 8760 hours/year ****
 **** operation instead of reported 8819. hours/year. ****

2.0 DAR-1 SOFTWARE PROGRAM SHORT-TERM METHOD.
 See "Technical Reference for the Screening Procedures of the DAR-1 Software Program, Wade/Sedefian," 1/11/94.

2.2 CAVITY Short-Term Impact is equal to 0.00 ug/m3 as the plume escaped the cavity region: hs< 40. feet > hc< 26. feet >.

II.C. CAVITY Short-Term Impact < 0.000 ug/m3 > is less than SGC < 180000.000 ug/m3 >.

2.3 Momentum flux, F_m , is equal to 1000.331 ft<4>/sec<2>.

2.3 Effective stack height, h_e , is equal to 51.001 feet.

2.4 Maximum non-downwash GEP stack Short-Term Impact (CSTP) is equal to 0.293 ug/m3, for $h_s/h_b = 1.60$

2.5 Maximum downwash Short-Term Impact (CSTD) is equal to 0.981 ug/m3, for: $h_s/h_b = 1.60$ and $ESH = 51. feet.$

2.6 Adjusted maximum downwash Short-Term (CSTD) is equal to 0.820 ug/m3, for: $RF = 0.84$

III.D. Maximum non-cavity Short-Term Impact (CST: 0.820 ug/m3 > is less than the SGC < 180000.000 ug/m3 > for the point source.

2.7 Maximum Short-Term cavity, point, or area source impact (SHORT-TERM MAXIMUM, (Cav,Pt,Area)) equals 0.820 ug/m3 and is reported in the ANALYSIS MENU. This value is less than the SGC < 180000.000 ug/m3 >.

VII. Contaminant Impact Summary Step by Step Menu for cis 1,2-Dichloroethene:

```

*****
NWIRP BETHPAGE GM-38 AREA          BETHPAGE          OYSTER BAY, NEW
EMISSION POINT =          TOTAL          CAS NUMBER = 00156-59-2          SIC = 0
AGC =          63.000000000 ug/m3          SGC =          0.000000 ug/m3
STACK: HA=          15., SH=          40., D=          36., I=          80., U=          21.69, q=          9200.00
BUILDING: Dpl=          50., BW=          75., BL=          75., %CONTROL=          0.0000
** Reported Hourly Emission Rate <Q> is equal to          0.025800000 lbs/hour.
** Reported Annual Emission Rate <Qa> is equal to          226.000000 lbs/year.
II.B. REFINED CAVITY IMPACT METHOD <DAR-1, APPENDIX B>.
II.B.1. Shortest Distance from building to Property Line < 50. feet >
is less than or equal to the cavity length, or 3 building
heights < 75. feet >. Therefore, this building will have
cavity impacts <if they occur> at receptors off plant property.
II.B.2. The largest building dimension < 75. feet > is greater than or
equal to the building height < 25. feet >. Therefore, the
computer will NOT redefine the cavity length.
II.B.3. Stack height < 40. feet > is greater than cavity height
< 38. feet >. Therefore, this source does not contribute to
the buildings cavity impact. The Computer will assume the
CAVITY Annual Impact equals 0.00 ug/m3.
II.C. CAVITY Annual Impact < 0.000 ug/m3 > is less than AGC
< 63.000 ug/m3 >.
III.A. STANDARD POINT SOURCE METHOD <DAR-1, APPENDIX B>.
III.A.1.b. Momentum flux, Fm, is equal to 1000.331 ft<4>/sec<2>.
III.A.1.b. Effective stack height, he, is equal to 51.001 feet.
III.A.2. STANDARD POINT SOURCE Actual Annual Impact is equal
to 0.195 ug/m3 for 8760. hours/year of operation.
III.A.3. STANDARD POINT SOURCE Potential Annual Impact is equal
to 0.195 ug/m3 assuming 8,760 hours/year of operation.
III.A.4.a. Stack height to building height ratio is greater than
1.5, but less than 2.5. Computer will multiply actual
annual & potential annual impacts by 0.75 factor.

```

III.A.5. STANDARD POINT SOURCE Short-Term Impact is calculated below using the DAR-1 SOFTWARE PROGRAM SHORT-TERM METHOD.

III.D. STANDARD POINT SOURCE Actual Annual Impact < 0.146 ug/m3 > is less than AGC < 63.000 ug/m3 >.

III.D. STANDARD POINT SOURCE Potential Annual Impact < 0.146 ug/m3 > is less than AGC < 63.000 ug/m3 >.

**** Potential Annual Impact is based upon 8760 hours/year ****
 **** operation instead of reported 8760. hours/year. ****

2.0 DAR-1 SOFTWARE PROGRAM SHORT-TERM METHOD.
 See 'Technical Reference for the Screening Procedures of the DAR-1 Software Program, Wade/Sedefian,' 1/11/94.

2.2 CAVITY Short-Term Impact is equal to 0.00 ug/m3 as the plume escaped the cavity region: hs(40. feet) > hc(26. feet).

II.C. CAVITY Short-Term Impact is equal to 0.000 ug/m3.
 There is no SGC for this contaminant.

2.3 Momentum flux, Fm, is equal to 1000.331 ft(4)/sec(2).

2.3 Effective stack height, he, is equal to 51.001 feet.

2.4 Maximum non-downwash GEP stack Short-Term Impact (CSTP) is equal to 2.909 ug/m3, for hs/hb = 1.60

2.5 Maximum downwash Short-Term Impact (CSTD) is equal to 9.732 ug/m3, for: hs/hb = 1.60 and ESH = 51. feet.

2.6 Adjusted maximum downwash Short-Term (CSTD) is equal to 8.136 ug/m3, for: RF = 0.84

III.D. Maximum non-cavity Short-Term Impact (CST) equals 8.136 ug/m3 for the point source. There is no SGC for this contaminant.

2.7 Maximum Short-Term cavity, point, or area source impact (SHORT-TERM MAXIMUM, (Cav,Pt,Area)) equals 8.136 ug/m3 and is reported in the ANALYSIS MENU.

VIII. Contaminant Impact Summary Step by Step Menu for 1,2-Dichloroethene (total):

```

*****
NWIRP BETHPAGE GM-38 AREA          BETHPAGE          OYSTER BAY, NEW
EMISSION POINT =          TOTAL          CAS NUMBER = 00540-59-0          SIC = 0
AGC =          63.000000000 ug/m3          SGC =          0.000000 ug/m3
STACK: HA= 15., SH= 40., D= 36., T= 80., U= 21.69, q= 9200.00
BUILDING: Dpl= 50., BW= 75., BL= 75., %CONTROL= 0.0000
** Reported Hourly Emission Rate <Q> is equal to          0.025800000 lbs/hour.
** Reported Annual Emission Rate <Qa> is equal to          226.000000 lbs/year.
II.B. REFINED CAVITY IMPACT METHOD <DAR-1, APPENDIX B>.
II.B.1. Shortest Distance from building to Property Line < 50. feet >
is less than or equal to the cavity length, or 3 building
heights < 75. feet >. Therefore, this building will have
cavity impacts <if they occur> at receptors off plant property.
II.B.2. The largest building dimension < 75. feet > is greater than or
equal to the building height < 25. feet >. Therefore, the
computer will NOT redefine the cavity length.
II.B.3. Stack height < 40. feet > is greater than cavity height
< 38. feet >. Therefore, this source does not contribute to
the buildings cavity impact. The Computer will assume the
CAVITY Annual Impact equals 0.00 ug/m3.
II.C. CAVITY Annual Impact < 0.000 ug/m3 > is less than AGC
< 63.000 ug/m3 >.
III.A. STANDARD POINT SOURCE METHOD <DAR-1, APPENDIX B>.
III.A.1.b. Momentum flux, Pm, is equal to 1000.331 ft<4>/sec<2>.
III.A.1.b. Effective stack height, he, is equal to 51.001 feet.
III.A.2. STANDARD POINT SOURCE Actual Annual Impact is equal
to 0.195 ug/m3 for 8760. hours/year of operation.
III.A.3. STANDARD POINT SOURCE Potential Annual Impact is equal
to 0.195 ug/m3 assuming 8,760 hours/year of operation.
III.A.4.a. Stack height to building height ratio is greater than
1.5, but less than 2.5. Computer will multiply actual
annual & potential annual impacts by 0.75 factor.

```



```

III.A.5. STANDARD POINT SOURCE Short-Term Impact is calculated below
         using the DAR-1 SOFTWARE PROGRAM SHORT-TERM METHOD.

III.D. STANDARD POINT SOURCE Actual Annual Impact < 0.146 ug/m3 > is
         less than AGC < 63.000 ug/m3 >.

III.D. STANDARD POINT SOURCE Potential Annual Impact < 0.146 ug/m3 >
         is less than AGC < 63.000 ug/m3 >.

**** Potential Annual Impact is based upon 8760 hours/year ****
**** operation instead of reported 8760. hours/year. ****

2.0 DAR-1 SOFTWARE PROGRAM SHORT-TERM METHOD.
    See "Technical Reference for the Screening Procedures of the
    DAR-1 Software Program, Wade/Sedefian," 1/11/94.

2.2 CAVITY Short-Term Impact is equal to 0.00 ug/m3 as the plume
     escaped the cavity region: hs< 40. feet > hc< 26. feet >.

II.C. CAVITY Short-Term Impact is equal to 0.000 ug/m3.
       There is no SGC for this contaminant.

2.3 Momentum flux, Fm, is equal to 1000.331 ft<4>/sec<2>.

2.3 Effective stack height, he, is equal to 51.001 feet.

2.4 Maximum non-downwash GEP stack Short-Term Impact <CSTP> is equal
     to 2.909 ug/m3, for hs/hb = 1.60

2.5 Maximum downwash Short-Term Impact <CSTD> is equal
     to 9.732 ug/m3, for: hs/hb = 1.60 and ESH = 51. feet.

2.6 Adjusted maximum downwash Short-Term <CSTD> is equal
     to 8.136 ug/m3, for: RF = 0.84

III.D. Maximum non-cavity Short-Term Impact <CST> equals 8.136 ug/m3
       for the point source. There is no SGC for this contaminant.

2.7 Maximum Short-Term cavity, point, or area source impact
     <SHORT-TERM MAXIMUM, <Cav.Pt.Area>> equals 8.136 ug/m3
     and is reported in the ANALYSIS MENU.

```

IX. AGCs and SGCs for TCE, PCE, Vinyl Chloride, cis 1,2-Dichloroethene, and 1,2-Dichloroethene (total):

AGCs & SGCs				9/ 8/11
				Page 1
CAS NUMBER	CONTAMINANT NAME	SGC ug/m3	II O V	II I O O V X CODES
00075-01-4	VINYL CHLORIDE	18000.00000	D	0.110000000 E H U HA
00079-01-6	TRICHLOROETHYLENE	14000.00000	Z	0.500000000 D M U HA
00127-10-4	TETRACHLOROETHYLENE	1000.00000	H	1.000000000 H M U HA
00156-59-2	DICHLOROETHYLENE, cis	0.00000		63.000000000 D M
00540-59-0	DICHLOROETHYLENE, 12	0.00000		63.000000000 D M

X. Contaminant Emissions Summary for TCE, PCE, Vinyl Chloride, cis 1,2-Dichloroethene, and 1,2-Dichloroethene (total):

CONTAMINANT EMISSIONS SUMMARY				9/ 8/11
				Page 1
CAS NUMBER	CONTAMINANT NAME	NUM. OF EPs PER CONTAM.	EMISSIONS <lbs/hour>	EMISSIONS <lbs/year>
00075-01-4	VINYL CHLORIDE	1	0.0026000	22.93000
00079-01-6	TRICHLOROETHYLENE	1	0.3444000	3017.00000
00127-10-4	TETRACHLOROETHYLENE	1	0.2342000	2052.00000
00156-59-2	DICHLOROETHYLENE, cis	1	0.0258000	226.00000
00540-59-0	DICHLOROETHYLENE, 1,2	1	0.0258000	226.00000
SUMMARY TOTALS		5	0.6328000	5543.93000

XI. Meter Grid Modeling Results for Maximum Annual Concentrations of TCE, within 25 meters:

CONCENTRATIONS x 10 ⁻² <ug/m3> for 00079-01-6													09/08/11
AGC = 0.500000000 ug/m3													13:17:58
TIME +	367000.	368000.	369000.	370000.	371000.	372000.	373000.	374000.	375000.	376000.	377000.	378000.	
UTM Y	368000.	370000.	372000.	374000.	376000.	378000.							
4511000.	0.04	0.06	0.08	0.14	0.23	0.32	0.41	0.30	0.14	0.10	0.08	0.06	0.05
4510000.	0.03	0.05	0.08	0.13	0.25	0.43	0.60	0.40	0.17	0.12	0.09	0.07	0.06
4509000.	0.02	0.03	0.06	0.11	0.24	0.58	1.01	0.52	0.22	0.14	0.11	0.08	0.06
4508000.	0.02	0.03	0.04	0.06	0.18	0.62	2.16	0.64	0.31	0.19	0.13	0.11	0.09
4507000.	0.02	0.03	0.04	0.06	0.11	0.26	7.27	1.43	0.60	0.34	0.22	0.15	0.12
4506000.	0.03	0.03	0.05	0.07	0.13	0.33	2.58	2.99	1.12	0.51	0.30	0.20	0.14
4505000.	0.03	0.04	0.05	0.08	0.20	0.45	0.94	0.81	0.60	0.45	0.33	0.23	0.16
4504000.	0.03	0.04	0.07	0.12	0.20	0.22	0.47	0.43	0.33	0.27	0.24	0.20	0.16

TOP 100 CONTRIBUTORS TO MAXIMUM CONCENTRATION FOR 00079-01-6							09/08/11
@ UTMX: 373000. UTMN: 4507000.							13:17:58
Emission Point	Facility Name (shortened)	EP DIR	Distance to Max.(m)	CONC. ug/m3	Percent of Max.		
TOTAL	NWIRP BETHPAGE GM-38 AREA	SSE	539.	0.727E-01	100.000		
TOTAL OF ALL	1 CONTRIBUTORS					0.727E-01	100.000

XII. ISCLT Model Run Information, within 25 meters:

```

                                MODEL RUN INFORMATION
                                09/08/11
                                13:17:58

1. Current GRID SPACING equals 1000. meters.
2. Maximum Concentration (flashing) equals 0.0727115273 ug/m3
   @ UTME: 373000. UTMN: 4507000.

3. RUN FILE: TEMP?.RUN
4. METEOROLOGICAL FILE: ALB.MET
5. RUN MODE: URBAN
6. HALF-LIVES: not used to account for pollutant removal from air.
7. BLD. WAKE EFFECTS: AS-1 METHOD, All data KNOWN (hb, hv, hl, orientation)
8. EMISSIONS: ACTUAL ANNUAL EMISSIONS
9. SOURCES: All sources within 25. meters of
   UTME: 373275. UTMN: 4506537.
10. CONTAMINANT CAS NUMBER(s): 00079-01-6
11. EMISSION POINT - CONTAMINANT(s) found by computer: 1
12. No data is being copied to DUMP file.
```

APPENDIX C

FIELD LOGS

Date: 06/15/17



Groundwater Level Measurement Sheet

Project Site: NWIRP Bethpage – GM-38
 Location: Bethpage, NY
 Field Crew: R.H

Water Level Meter: Solinst
 Weather: Partly Cloudy, 66 F, SE 9mph, 30. Hg
 Time of Low Tide: N/A
 Time of High Tide: N/A

Well ID	Time	Depth to Water (ft.)	Total Depth of Well / Screenshot Interval (ft.)	PID (ppm)	Comments
RW1-MW1	9:30	40.85	435 / 395-435	---	
RW1-MW2	8:40	44.51	435 / 395-435	---	
RW1-MW3	10AM	33.68	435 / 395-435	---	
RW2-MW1	9:45	43.78	510 / 470-510	---	
RW2-MW2	9AM	43.47	510 / 470-510	---	
RW2-MW3	8:50	43.50	510 / 470-510	---	
RW3-MW1	9:25	41.35	350 / 330-350	---	
RW3-MW2	9:20	43.50	495 / 475-495	---	
RW3-MW3	9:08	41.20	340 / 320-340	---	
RW3-MW4	9:15	44.82	495 / 475-495	---	
TP1	8:30	39.58	470 / 450-470	---	
IW1-MW1	8:45	40.15	470 / 450-470	---	
RW-1	8:35	—	Open vault and check integrity of piping, etc.		a.k
RW-3	9:40	—	Open vault and check integrity of piping, etc.		a.k

Signature: _____

Date: 6.15.2017