

Pelton, Jason M (DEC)

From: Wu, Ernie <Ernie.Wu@tetrattech.com>
Sent: Thursday, September 17, 2020 11:22 AM
To: Pelton, Jason M (DEC); Murray, Brian S CIV NAVFAC MIDLANT, IPTNORTH; Brayack, David
Cc: Hesler, Donald (DEC)
Subject: VPB-181 Well Selection package, NWIRP Bethpage
Attachments: VPB-181-plot-MW selection 091720.pdf; reduced - FIGURE 2 - BP_offproperty_VPB100319.pdf

ATTENTION: This email came from an external source. Do not open attachments or click on links from unknown senders or unexpected emails.

Jason,

VPB-181 has been completed. The attached figure provides preliminary data from VPB-181, VPB-181 gamma log, and MW screen selection for 3 wells. I've also included a figure showing the location of VPB-181.

Please note, the two deeper wells (BPOW1-7 and BPOW 1-8) will serve as outpost wells for SFWD Plant 1, Well 1-4. These two outpost wells will require trigger values to be developed in accordance with the Navy's ROD. In the interim, the Navy will use 0.5 ug/L as a temporary, conservative value.

Thanks,
Ernie

Ernie Wu | Project Manager | Environmental Scientist
Main: 757.461.3768 | Direct: 757.466.4901 | Fax: 757.461.4148
ernie.wu@tetrattech.com

Tetra Tech, Inc | Norfolk Office
Twin Oaks I, Suite 102, 5700 Lake Wright Drive | Norfolk, VA 23502 | www.tetrattech.com

PLEASE NOTE: This message, including any attachments, may include privileged, confidential and/or inside information. Any distribution or use of this communication by anyone other than the intended recipient is strictly prohibited and may be unlawful. If you are not the intended recipient, please notify the sender by replying to this message and then delete it from your system.



**Former Northrop
Crumman Facility**

**Former NWIRP
Bethpage Facility**

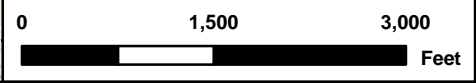
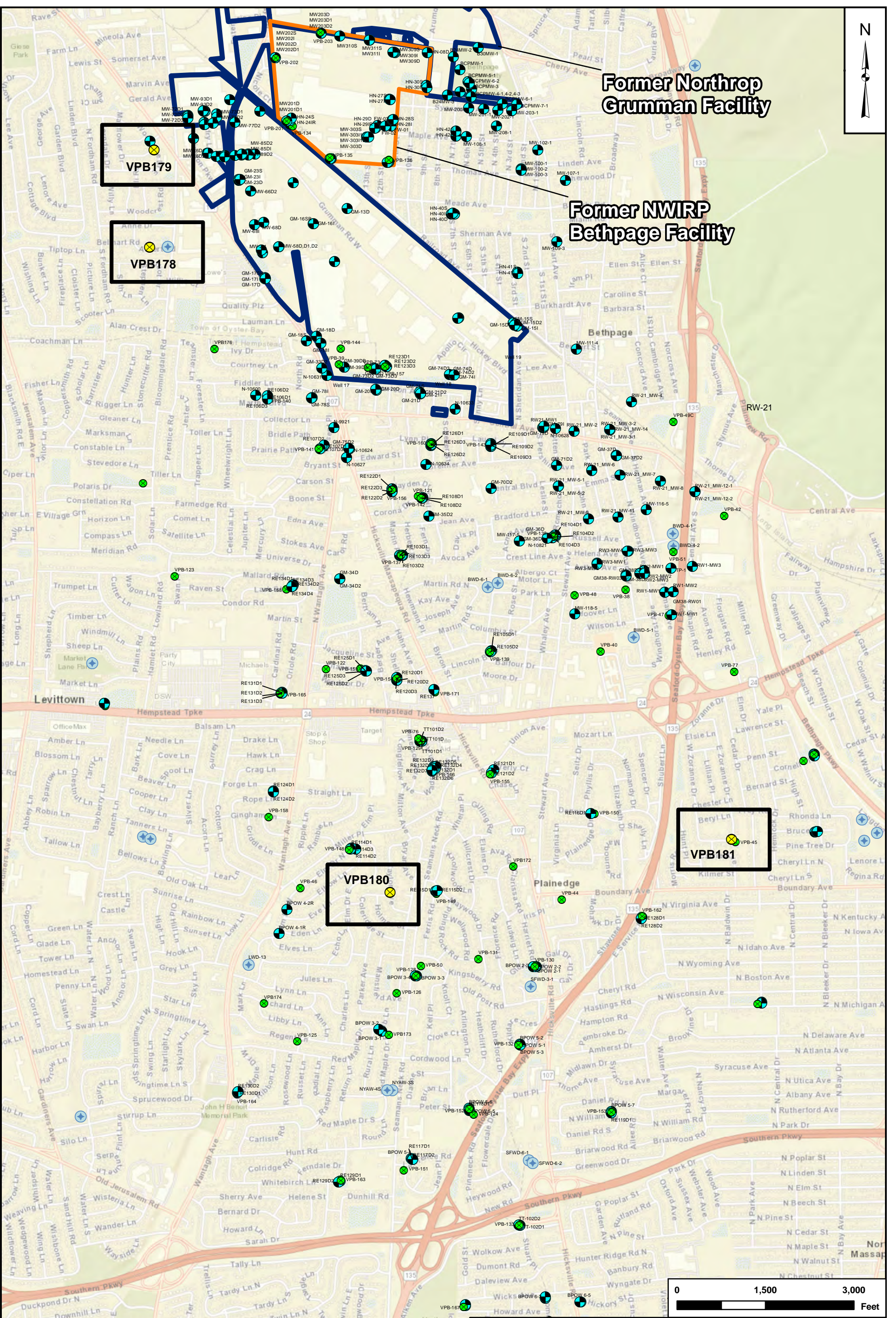
VPB179

VPB178

VPB181

VPB180

NOR_PAGIS_files\Bethpage\MAP\DOCS\MXD\BP_OU2_2018\WP_VPB\BP_ofproperty_VPB.mxd MMC



Legend

- Vertical Profile Boring (Proposed)
- Monitoring Well
- Vertical Profile Boring
- Water Supply Well



**PROPOSED VERTICAL PROFILE
BORING LOCATIONS
NWIRP BETHPAGE, NEW YORK**

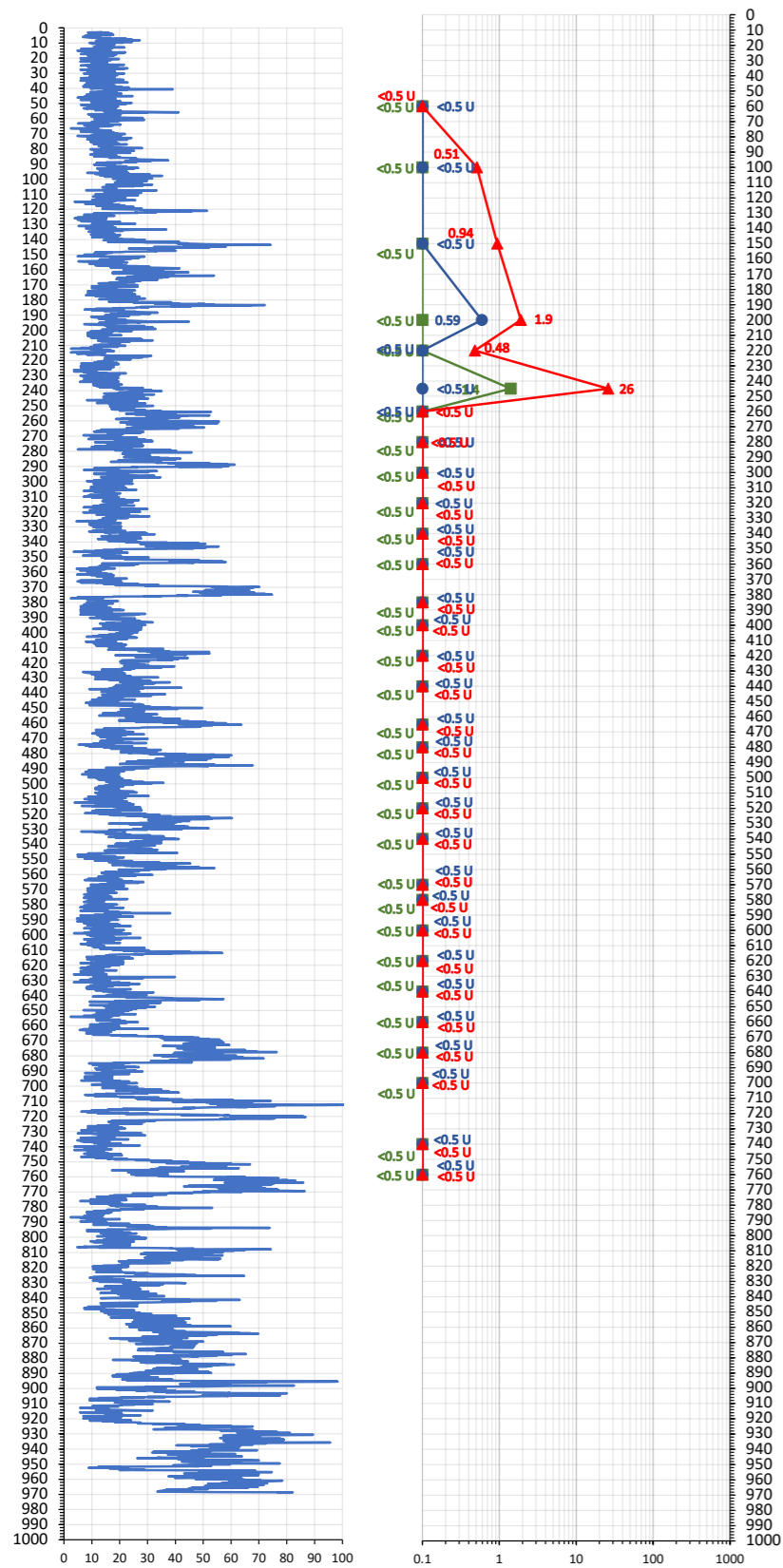
CTO	
WE13	
DRAWN BY	DATE
MC	10/03/19
CHECKED BY	DATE
RD	10/03/19
FIGURE NUMBER	
2	

Vertical Profile Boring VPB-150, VPB-162, and VPB-181

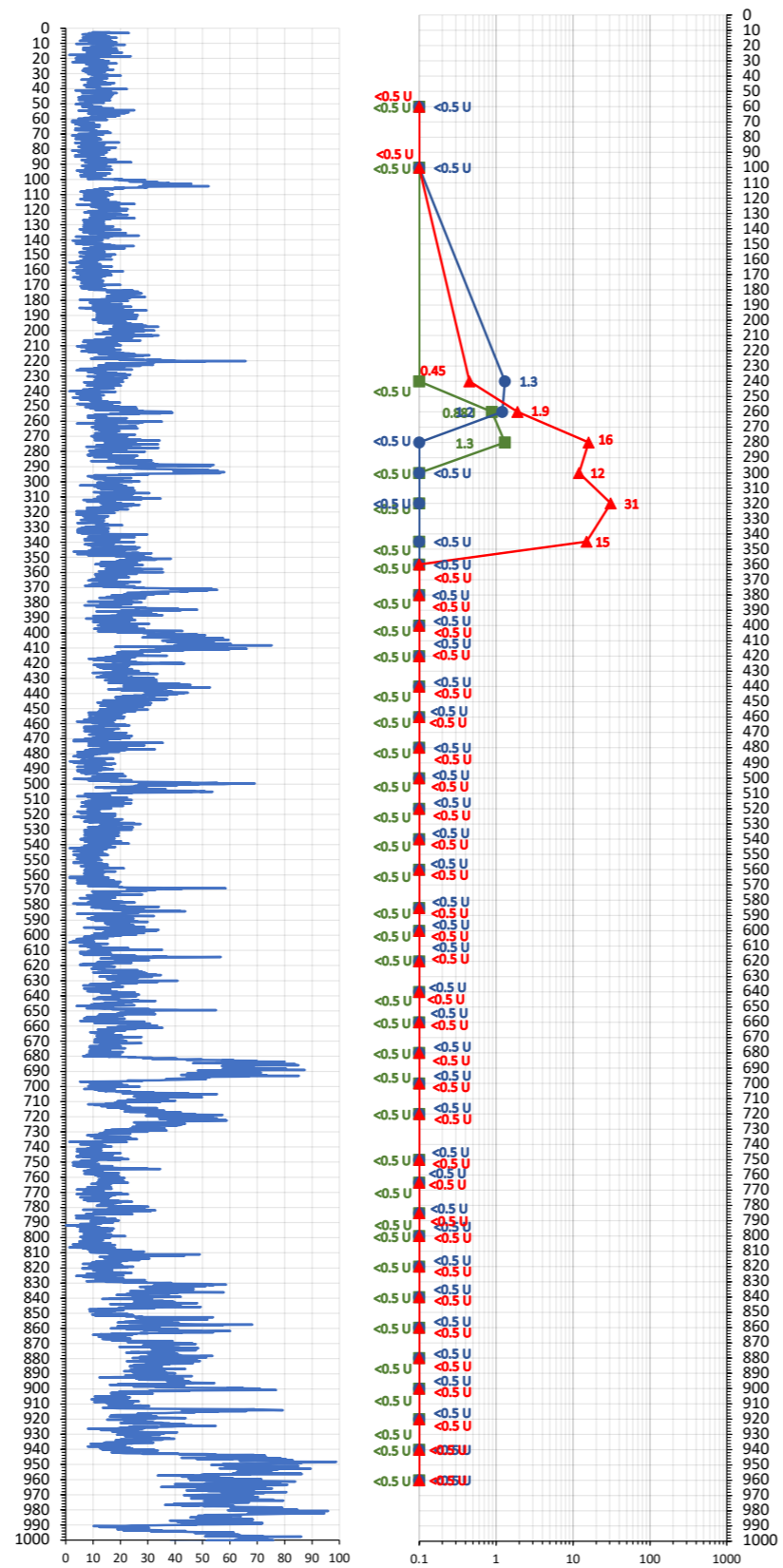
Downward Run - 9/9/2020

Preliminary Data

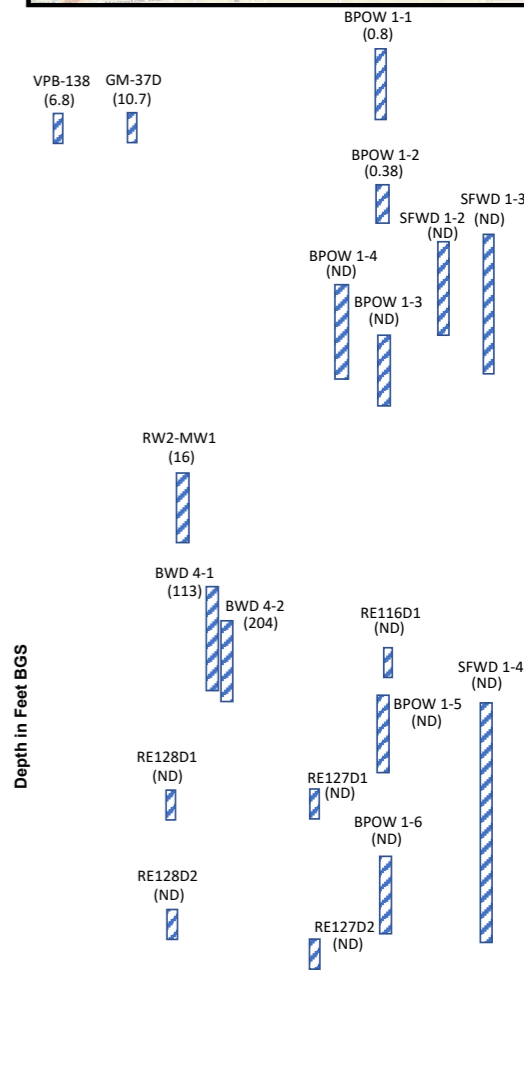
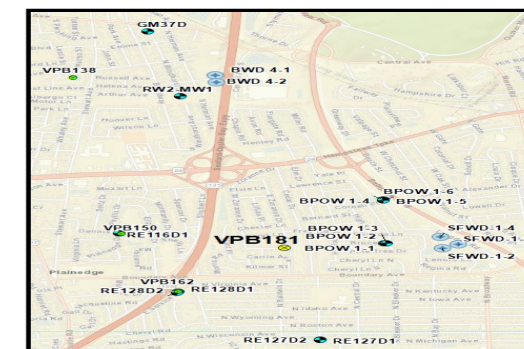
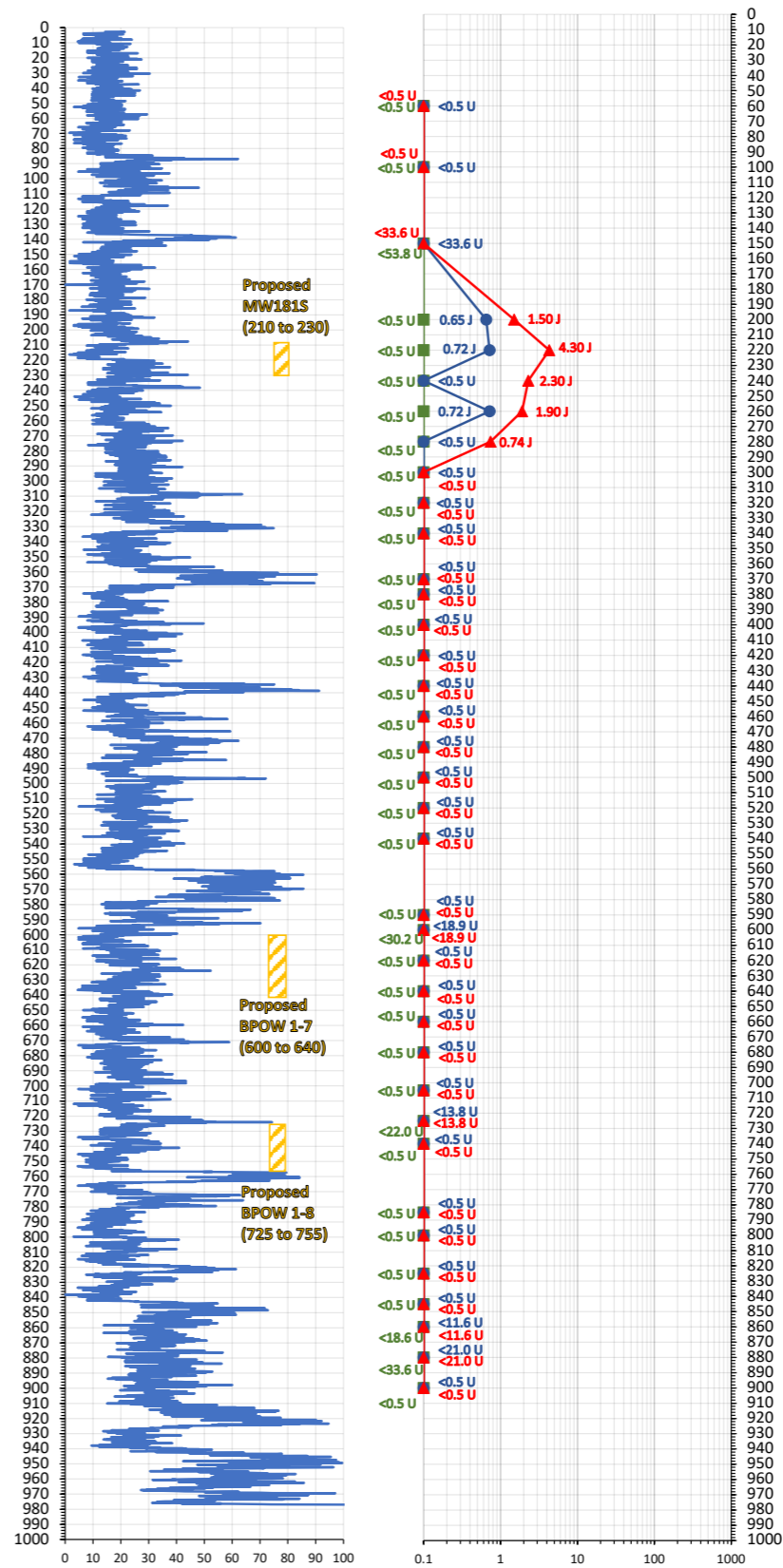
VPB-150



VPB-162



VPB-181



- Legend:**
- ▲ TCE Results in ug/L
 - PCE Results in ug/L
 - Freon-113 Results in ug/L
 - Monitoring Well Screen
 - ND - TCE Not Detected

Natural Gamma in CPS
TCE, PCE, and Freon-113 Results in ug/L