

## Pelton, Jason M (DEC)

---

**From:** Wu, Ernie <Ernie.Wu@tetrattech.com>  
**Sent:** Thursday, October 15, 2020 10:42 AM  
**To:** Pelton, Jason M (DEC); Karpinski, Steven (HEALTH); Lovejoy, John (NASSAU); Stein, Carol; Azzam, Nidal; rlenz@oysterbay-ny.gov  
**Cc:** Murray, Brian S CIV NAVFAC MIDLANT, IPTNORTH; Fly, Lora B CIV NAVFAC MIDLANT, IPTNE (lora.fly@navy.mil); Brayack, David; Francisco, Ben; Varricchio, Vin; Walls, Kristen  
**Subject:** Q2, 2020 (June) Validated Data, OU2 Navy groundwater sampling  
**Attachments:** Q2 OU2\_TT\_Wells\_June\_2020.pdf; Figure 2\_062220.pdf

*ATTENTION: This email came from an external source. Do not open attachments or click on links from unknown senders or unexpected emails.*

All:

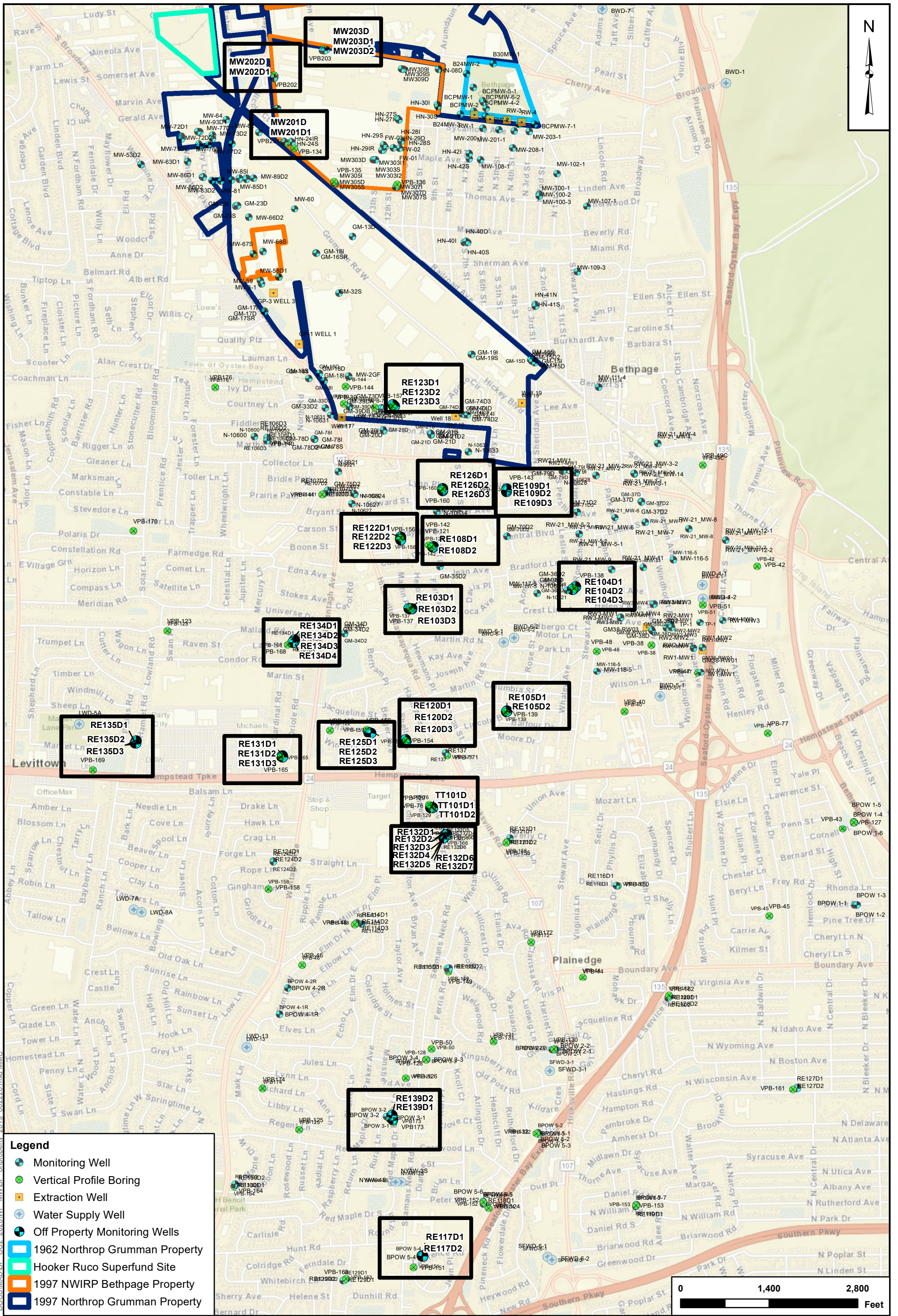
As per discussions between the Navy and NYSDEC, NYSDEC requested that the Navy submit the validated data as soon as the information is available. Please find attached, a pdf table of the Q2, 2020 (June) OU2 groundwater sampling data. The data includes VOCs and 1,4-dioxane results. A figure has also been included depicting the locations of groundwater monitoring wells sampled.

**Ernie Wu** | Project Manager | Environmental Scientist  
Main: 757.461.3768 | Direct: 757.466.4901 | Fax: 757.461.4148  
[ernie.wu@tetrattech.com](mailto:ernie.wu@tetrattech.com)

Tetra Tech, Inc | Norfolk Office  
Twin Oaks I, Suite 102, 5700 Lake Wright Drive | Norfolk, VA 23502 | [www.tetrattech.com](http://www.tetrattech.com)

PLEASE NOTE: This message, including any attachments, may include privileged, confidential and/or inside information. Any distribution or use of this communication by anyone other than the intended recipient is strictly prohibited and may be unlawful. If you are not the intended recipient, please notify the sender by replying to this message and then delete it from your system.





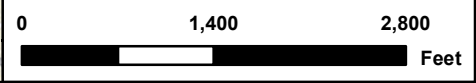
NOR-PGIS\_files\Bethpage\MAP\_DCS\MXD\BP\_OU2\_2020\WP\_MM\BP\_ownership\_2019\_062220.mxd MMC

**Legend**

- Monitoring Well
- Vertical Profile Boring
- Extraction Well
- Water Supply Well
- Off Property Monitoring Wells
- 1962 Northrop Grumman Property
- Hooker Ruco Superfund Site
- 1997 NWIRP Bethpage Property
- 1997 Northrop Grumman Property



**LOCATION MAP OF WELLS  
2019 ANNUAL OU2 GROUNDWATER INVESTIGATION  
NAVAL WEAPONS INDUSTRIAL RESERVE PLANT  
BETHPAGE, NEW YORK**



CTO	
N62470-16-D-9008 WE13	
DRAWN BY	DATE
MC	06/23/20
CHECKED BY	DATE
RD	06/23/20
FIGURE NUMBER	
<b>2</b>	



**Q2, 2020 (June) Validated Analytical Data**  
**Navy OU2 Groundwater Sampling**  
**Naval Weapons Industrial Reserve Plant Bethpage**  
Page 1 of 7

LOCATION SAMPLE ID SAMPLE DATE DUPLICATE	MW201D MW201D-20200613 06/13/2020	MW201D1 MW201D1-20200616 06/16/2020	MW202D MW202D-20200613 06/13/2020	MW202D1 MW202D1-20200613 06/13/2020	MW203D MW203D-20200614 06/14/2020	MW203D1 MW203D1-20200614 06/14/2020	MW203D2 MW203D2-20200613 06/13/2020	RE103D1 RE103D1-20200616 06/16/2020	RE103D1 RE103D1-20200616-D 06/16/2020 RE103D1-20200616
<b>VOLATILES (UG/L)</b>									
1,1,1-TRICHLOROETHANE	8.3	0.75 U	0.42 J	0.75 U	1.1 J	3.3 J	0.75 U	0.75 U	0.75 U
1,1,2,2-TETRACHLOROETHANE	0.5 U	0.5 U	0.5 U	0.5 U	0.5 U	0.5 U	0.5 U	0.5 U	0.5 U
1,1,2-TRICHLOROETHANE	0.5 U	0.5 U	0.5 U	0.5 U	0.5 U	0.5 U	0.5 U	0.5 U	0.5 U
1,1,2-TRICHLOROTRIFLUOROETHANE	3.8 J	0.5 U	0.5 U	0.5 U	0.5 U	0.5 U	0.5 U	5.8	5.4
1,1-DICHLOROETHANE	4.9 J	0.5 U	0.5 U	0.5 U	3.2 J	21.7	0.5 U	0.5 U	0.5 U
1,1-DICHLOROETHENE	56.8	0.5 U	1.6 J	0.5 U	0.94 J	6	0.5 U	3.2 J	3 J
1,2-DICHLOROBENZENE	0.5 U	0.5 U	0.5 U	0.5 U	0.5 U	0.5 U	0.5 U	0.5 U	0.5 U
1,2-DICHLOROETHANE	0.75 U	0.75 U	0.75 U	0.75 U	0.75 U	0.75 U	0.75 U	0.75 U	0.75 U
1,2-DICHLOROPROPANE	0.5 U	0.5 U	0.5 U	0.5 U	0.5 U	0.5 U	0.5 U	0.5 U	0.5 U
1,3-DICHLOROBENZENE	0.5 U	0.5 U	0.5 U	0.5 U	0.5 U	0.5 U	0.5 U	0.5 U	0.5 U
1,4-DICHLOROBENZENE	0.5 U	0.5 U	0.5 U	0.5 U	0.5 U	0.5 U	0.5 U	0.5 U	0.5 U
2-BUTANONE	2.5 U	2.5 U	2.5 U	2.5 U	2.5 U	2.5 U	2.5 U	2.5 U	2.5 U
2-HEXANONE	3.8 U	3.8 U	3.8 U	3.8 U	3.8 U	3.8 U	3.8 U	3.8 U	3.8 U
4-METHYL-2-PENTANONE	2.5 U	2.5 U	2.5 U	2.5 U	2.5 U	2.5 U	2.5 U	2.5 U	2.5 U
ACETONE	6.4 J	4.6 J	5.4 J	3.6 J	3.4 J	2.5 U	6.7 J	5.2 J	5.6 J
BENZENE	0.5 U	0.5 U	0.5 U	0.5 U	0.5 U	0.5 U	0.5 U	0.5 U	0.5 U
BROMODICHLOROMETHANE	0.5 U	0.5 U	0.5 U	0.5 U	0.5 U	0.5 U	0.5 U	0.5 U	0.5 U
BROMOFORM	0.5 U	0.5 U	0.5 U	0.5 U	0.5 U	0.5 U	0.5 U	0.5 U	0.5 U
BROMOMETHANE	3.8 U	3.8 U	3.8 U	3.8 U	3.8 U	3.8 U	3.8 U	3.8 U	3.8 U
CARBON DISULFIDE	0.5 U	0.5 U	0.5 U	0.5 U	0.5 U	0.5 U	0.5 U	0.5 U	0.5 U
CARBON TETRACHLORIDE	0.5 U	0.5 U	0.5 U	0.5 U	0.5 U	0.5 U	0.5 U	0.5 U	0.5 U
CHLOROETHANE	0.5 U	0.5 U	0.5 U	0.5 U	0.5 U	0.5 U	0.5 U	0.5 U	0.5 U
CHLORODIBROMOMETHANE	0.5 U	0.5 U	0.5 U	0.5 U	0.5 U	0.5 U	0.5 U	0.5 U	0.5 U
CHLOROETHANE	0.5 U	0.5 U	0.5 U	0.5 U	0.5 U	0.5 U	0.5 U	0.5 U	0.5 U
CHLOROFORM	5.5	0.5 U	0.65 J	1.3 J	0.62 J	1.1 J	0.5 U	0.5 U	0.44 J
CHLOROMETHANE	0.5 U	0.5 U	0.5 U	0.5 U	0.5 U	0.5 U	0.5 U	0.5 U	0.5 U
CIS-1,2-DICHLOROETHENE	3.5 J	0.5 U	13.9	30.2	3.5 J	0.91 J	0.5 U	1.9 J	1.8 J
CIS-1,3-DICHLOROPROPENE	0.5 U	0.5 U	0.5 U	0.5 U	0.5 U	0.5 U	0.5 U	0.5 U	0.5 U
ETHYLBENZENE	0.5 U	0.5 U	0.5 U	0.5 U	0.5 U	0.5 U	0.5 U	0.5 U	0.5 U
ISOPROPYLBENZENE	0.5 U	0.5 U	0.5 U	0.5 U	0.5 U	0.5 U	0.5 U	0.5 U	0.5 U
M+P-XYLENES	1 U	1 U	1 U	1 U	1 U	1 U	1 U	1 U	1 U
METHYL CYCLOHEXANE	0.5 U	0.5 U	0.5 U	0.5 U	0.5 U	0.5 U	0.5 U	0.5 U	0.5 U
METHYL TERT-BUTYL ETHER	0.5 U	0.5 U	0.5 U	5.4	0.5 U	0.5 U	0.5 U	0.5 U	0.5 U
METHYLENE CHLORIDE	0.5 U	0.5 U	0.5 U	0.5 U	0.5 U	0.5 U	0.5 U	0.5 U	0.5 U
O-XYLENE	0.5 U	0.5 U	0.5 U	0.5 U	0.5 U	0.5 U	0.5 U	0.5 U	0.5 U
STYRENE	0.5 U	0.5 U	0.5 U	0.5 U	0.5 U	0.5 U	0.5 U	0.5 U	0.5 U
TETRACHLOROETHENE	120	0.5 U	18.2	20	0.66 J	1.2 J	0.5 U	5.8	5.9
TOLUENE	0.5 U	0.5 U	0.5 U	0.5 U	0.39 J	0.5 U	0.5 U	0.5 U	0.5 U
TRANS-1,2-DICHLOROETHENE	0.5 U	0.5 U	0.5 U	0.5 U	0.5 U	0.5 U	0.5 U	0.5 U	0.5 U
TRANS-1,3-DICHLOROPROPENE	0.5 U	0.5 U	0.5 U	0.5 U	0.5 U	0.5 U	0.5 U	0.5 U	0.5 U
TRICHLOROETHENE	110	2.9 J	75.7	17.2	19.1	6.9	1.1 J	600	630
TRICHLOROFUOROMETHANE	190	0.5 U	2.4 J	0.5 U	0.5 U	0.5 U	0.5 U	0.5 U	0.5 U
VINYL CHLORIDE	0.54 J	0.5 U	0.5 U	0.5 U	0.5 U	0.5 U	0.5 U	0.5 U	0.5 U
<b>METHOD 8270D (UG/L)</b>									
1,4-DIOXANE	6.8	0.1 U	0.53 J	0.36	0.4	1.7	0.36 J	5.4 J	5.2
<b>METHOD 8260 SIM (UG/L)</b>									
1,4-DIOXANE	--	--	--	--	--	--	--	--	--
<b>METHOD 522 (UG/L)</b>									
1,4-DIOXANE	--	--	--	--	--	--	--	--	--

J = Estimated Value.  
U = non-detect

**Q2, 2020 (June) Validated Analytical Data**  
**Navy OU2 Groundwater Sampling**  
**Naval Weapons Industrial Reserve Plant Bethpage**  
Page 2 of 7

LOCATION SAMPLE ID SAMPLE DATE DUPLICATE	RE103D2 RE103D2-20200610 06/10/2020	RE103D3 RE103D3-20200610 06/10/2020	RE104D1 RE104D1-20200612 06/12/2020	RE104D2 RE104D2-20200612 06/12/2020	RE104D3 RE104D3-20200612 06/12/2020	RE105D1 RE105D1-20200609 06/9/2020	RE105D2 RE105D2-20200609 06/9/2020	RE108D1 RE108D1-20200608 06/8/2020	RE108D2 RE108D2-20200608 06/8/2020
<b>VOLATILES (UG/L)</b>									
1,1,1-TRICHLOROETHANE	0.75 U	0.75 U	0.75 U	0.75 U	0.75 U	0.55 J	15 U	0.75 U	18.8 U
1,1,2,2-TETRACHLOROETHANE	0.5 U	0.5 U	0.5 U	0.5 U	0.5 U	0.5 U	10 U	0.5 U	12.5 U
1,1,2-TRICHLOROETHANE	0.28 J	0.5 U	0.5 U	0.5 U	0.5 U	0.5 U	10 U	0.5 U	12.5 U
1,1,2-TRICHLOROTRIFLUOROETHANE	2.6 J	2.4 J	1.2 J	0.5 U	0.5 U	6.6	23.5 J	0.5 U	12.5 U
1,1-DICHLOROETHANE	0.5 U	0.5 U	0.5 U	0.5 U	0.5 U	0.5 U	10 U	0.5 U	12.5 U
1,1-DICHLOROETHENE	0.5 U	0.5 U	0.5 U	1.4 J	0.5 U	0.93 J	10 U	0.5 U	12.5 U
1,2-DICHLOROBENZENE	0.5 U	0.5 U	0.5 U	0.5 U	0.5 U	0.5 U	10 U	0.5 U	12.5 U
1,2-DICHLOROETHANE	0.75 U	0.75 U	0.75 U	2 J	0.75 U	0.75 U	15 U	0.75 U	18.8 U
1,2-DICHLOROPROPANE	0.5 U	0.5 U	0.5 U	0.5 U	0.5 U	0.5 U	10 U	0.5 U	12.5 U
1,3-DICHLOROBENZENE	0.5 U	0.5 U	0.5 U	0.5 U	0.5 U	0.5 U	10 U	0.5 U	12.5 U
1,4-DICHLOROBENZENE	0.5 U	0.5 U	0.5 U	0.5 U	0.5 U	0.5 U	10 U	0.5 U	12.5 U
2-BUTANONE	2.5 U	2.5 U	2.5 U	2.5 U	2.5 U	2.5 U	50 U	2.5 U	62.5 U
2-HEXANONE	3.8 U	3.8 U	3.8 U	3.8 U	3.8 U	3.8 U	75 U	3.8 U	93.8 U
4-METHYL-2-PENTANONE	2.5 U	2.5 U	2.5 U	2.5 U	2.5 U	2.5 U	50 U	2.5 U	62.5 U
ACETONE	2.5 U	25 U	25 U	25 U	25 U	25 U	50 U	2.5 U	62.5 U
BENZENE	0.5 U	0.5 U	0.5 U	0.5 U	0.5 U	0.5 U	10 U	0.5 U	12.5 U
BROMODICHLOROMETHANE	0.5 U	0.5 U	0.5 U	0.5 U	0.5 U	0.5 U	10 U	0.5 U	12.5 U
BROMOFORM	0.5 U	0.5 U	0.5 U	0.5 U	0.5 U	0.5 U	10 U	0.5 U	12.5 U
BROMOMETHANE	3.8 U	3.8 U	3.8 U	3.8 U	3.8 U	3.8 U	75 U	3.8 U	93.8 U
CARBON DISULFIDE	0.5 U	0.5 U	0.5 U	0.5 U	0.5 U	0.5 U	10 U	0.5 U	12.5 U
CARBON TETRACHLORIDE	0.5 U	0.5 U	0.5 U	0.5 U	0.5 U	0.5 U	10 U	0.5 U	12.5 U
CHLOROBENZENE	0.5 U	0.5 U	0.5 U	0.5 U	0.5 U	0.5 U	10 U	0.5 U	12.5 U
CHLORODIBROMOMETHANE	0.5 U	0.5 U	0.5 U	0.5 U	0.5 U	0.5 U	10 U	0.5 U	12.5 U
CHLOROETHANE	0.5 U	0.5 U	0.5 U	0.5 U	0.5 U	0.5 U	10 U	0.5 U	12.5 U
CHLOROFORM	0.59 J	0.5 U	0.5 U	4.9 J	0.5 U	0.5 U	10 U	0.5 U	12.5 U
CHLOROMETHANE	0.5 U	0.5 U	0.5 U	0.5 U	0.5 U	0.5 U	10 U	0.5 U	12.5 U
CIS-1,2-DICHLOROETHENE	0.5 U	0.5 J	0.5 U	48.3	0.5 U	1.1 J	10 U	0.5 U	12.5 U
CIS-1,3-DICHLOROPROPENE	0.5 U	0.5 U	0.5 U	0.5 U	0.5 U	0.5 U	10 U	0.5 U	12.5 U
ETHYLBENZENE	0.5 U	0.5 U	0.5 U	0.5 U	0.5 U	0.5 U	10 U	0.5 U	12.5 U
ISOPROPYLBENZENE	0.5 U	0.5 U	0.5 U	0.5 U	0.5 U	0.5 U	10 U	0.5 U	12.5 U
M+P-XYLENES	1 U	1 U	1 U	1 U	1 U	1 U	20 U	1 U	25 U
METHYL CYCLOHEXANE	0.5 U	0.5 U	0.5 U	0.5 U	0.5 U	0.5 U	10 U	0.5 U	12.5 U
METHYL TERT-BUTYL ETHER	0.5 U	0.5 U	0.5 U	0.5 U	0.5 U	0.5 U	10 U	0.5 U	12.5 U
METHYLENE CHLORIDE	0.5 U	0.5 U	0.5 U	0.5 U	0.5 U	0.5 U	10 U	0.5 U	12.5 U
O-XYLENE	0.5 U	0.5 U	0.5 U	0.5 U	0.5 U	0.5 U	10 U	0.5 U	12.5 U
STYRENE	0.5 U	0.5 U	0.5 U	0.5 U	0.5 U	0.5 U	10 U	0.5 U	12.5 U
TETRACHLOROETHENE	0.57 J	0.42 J	3.1 J	0.5 U	0.5 U	0.5 U	10 U	1.4 J	12.5 U
TOLUENE	0.5 U	0.5 U	0.5 U	0.5 U	0.5 U	0.5 U	10 U	0.5 U	12.5 U
TRANS-1,2-DICHLOROETHENE	0.5 U	0.5 U	0.5 U	0.5 U	0.5 U	0.5 U	10 U	0.5 U	12.5 U
TRANS-1,3-DICHLOROPROPENE	0.5 U	0.5 U	0.5 U	0.5 U	0.5 U	0.5 U	10 U	0.5 U	12.5 U
TRICHLOROETHENE	470	380	50.7	270	0.79 J	67.4	1900	33.2	2400
TRICHLOROFUOROMETHANE	0.5 U	0.5 U	0.5 U	0.5 U	0.5 U	0.5 U	10 U	0.5 U	12.5 U
VINYL CHLORIDE	0.5 U	0.5 U	0.5 U	0.5 U	0.5 U	0.5 U	10 U	0.5 U	12.5 U
<b>METHOD 8270D (UG/L)</b>									
1,4-DIOXANE	0.59	0.36	3.7	2.1	0.1 U	4	3.2	3.6	3
<b>METHOD 8260 SIM (UG/L)</b>									
1,4-DIOXANE	--	--	--	--	--	--	--	--	--
<b>METHOD 522 (UG/L)</b>									
1,4-DIOXANE	--	--	--	--	--	--	--	--	--

J = Estimated Value.  
U = non-detect

**Q2, 2020 (June) Validated Analytical Data**  
**Navy OU2 Groundwater Sampling**  
**Naval Weapons Industrial Reserve Plant Bethpage**  
Page 3 of 7

LOCATION SAMPLE ID SAMPLE DATE DUPLICATE	RE109D1 RE109D1-20200611 06/11/2020	RE109D2 RE109D2-20200611 06/11/2020	RE109D3 RE109D3-20200611 06/11/2020	RE109D3 RE109D3-20200611-D 06/11/2020 RE109D3-20200611	RE117D1 RE117D1-20200611 06/11/2020	RE117D2 RE117D2-20200611 06/11/2020	RE120D1 RE120D1-20200615 06/15/2020	RE120D2 RE120D2-20200615 06/15/2020	RE120D3 RE120D3-20200615 06/15/2020
<b>VOLATILES (UG/L)</b>									
1,1,1-TRICHLOROETHANE	0.75 U	0.75 U	0.75 U	0.75 U	0.75 U	0.75 U	0.75 U	0.75 U	0.75 U
1,1,2,2-TETRACHLOROETHANE	0.5 U	0.5 U	0.5 U	0.5 U	0.5 U	0.5 U	0.5 U	0.5 U	0.5 U
1,1,2-TRICHLOROETHANE	0.5 U	0.5 U	0.5 U	0.5 U	0.5 U	0.5 U	0.76 J	0.5 U	0.5 U
1,1,2-TRICHLOROTRIFLUOROETHANE	0.5 U	1.2 J	2 J	2.2 J	0.5 U	0.5 U	17.7	23.4	4.1 J
1,1-DICHLOROETHANE	0.5 U	0.5 U	0.5 U	0.5 U	0.5 U	0.5 U	1.3 J	0.5 U	0.5 U
1,1-DICHLOROETHENE	0.5 U	0.5 U	0.5 U	0.5 U	0.5 U	0.5 U	8.6	1.8 J	0.5 U
1,2-DICHLOROBENZENE	0.5 U	0.5 U	0.5 U	0.5 U	0.5 U	0.5 U	0.5 U	0.5 U	0.5 U
1,2-DICHLOROETHANE	0.75 U	0.75 U	0.75 U	0.75 U	0.75 U	0.75 U	0.75 U	0.75 U	0.75 U
1,2-DICHLOROPROPANE	0.5 U	0.5 U	0.5 U	0.5 U	0.5 U	0.5 U	0.5 U	0.5 U	0.5 U
1,3-DICHLOROBENZENE	0.5 U	0.5 U	0.5 U	0.5 U	0.5 U	0.5 U	0.5 U	0.5 U	0.5 U
1,4-DICHLOROBENZENE	0.5 U	0.5 U	0.5 U	0.5 U	0.5 U	0.5 U	0.5 U	0.5 U	0.5 U
2-BUTANONE	2.5 U	2.5 U	2.5 U	2.5 U	2.5 U	2.5 U	2.5 U	2.5 U	2.5 U
2-HEXANONE	3.8 U	3.8 U	3.8 U	3.8 U	3.8 U	3.8 U	3.8 U	3.8 U	3.8 U
4-METHYL-2-PENTANONE	2.5 U	2.5 U	2.5 U	2.5 U	2.5 U	2.5 U	2.5 U	2.5 U	2.5 U
ACETONE	25 U	2.5 U	2.5 U	25 U	2.5 U	2.5 U	2.5 U	2.5 U	2.5 U
BENZENE	0.5 U	0.5 U	0.5 U	0.5 U	0.5 U	0.5 U	0.5 U	0.5 U	0.5 U
BROMODICHLOROMETHANE	0.5 U	0.5 U	0.5 U	0.5 U	0.5 U	0.5 U	0.5 U	0.5 U	0.5 U
BROMOFORM	0.5 U	0.5 U	0.5 U	0.5 U	0.5 U	0.5 U	0.5 U	0.5 U	0.5 U
BROMOMETHANE	3.8 U	3.8 U	3.8 U	3.8 U	3.8 U	3.8 U	3.8 U	3.8 U	3.8 U
CARBON DISULFIDE	0.5 U	0.5 U	0.5 U	0.5 U	0.5 U	0.5 U	0.5 U	0.5 U	0.5 U
CARBON TETRACHLORIDE	0.5 U	0.5 U	0.5 U	0.5 U	1 J	0.5 U	0.43 J	0.69 J	0.5 U
CHLOROBENZENE	0.5 U	0.5 U	0.5 U	0.5 U	0.5 U	0.5 U	0.5 U	0.5 U	0.5 U
CHLORODIBROMOMETHANE	0.5 U	0.5 U	0.5 U	0.5 U	0.5 U	0.5 U	0.5 U	0.5 U	0.5 U
CHLOROETHANE	0.5 U	0.5 U	0.5 U	0.5 U	0.5 U	0.5 U	0.5 U	0.5 U	0.5 U
CHLOROFORM	0.5 U	0.5 U	0.5 U	0.5 U	0.5 U	0.5 U	0.58 J	0.54 J	0.5 U
CHLOROMETHANE	0.5 U	0.5 U	0.5 U	0.5 U	0.5 U	0.5 U	0.5 U	0.5 U	0.5 U
CIS-1,2-DICHLOROETHENE	0.5 U	0.5 U	0.5 U	0.5 U	0.64 J	0.5 U	3 J	3 J	0.54 J
CIS-1,3-DICHLOROPROPENE	0.5 U	0.5 U	0.5 U	0.5 U	0.5 U	0.5 U	0.5 U	0.5 U	0.5 U
ETHYLBENZENE	0.5 U	0.5 U	0.5 U	0.5 U	0.5 U	0.5 U	0.5 U	0.5 U	0.5 U
ISOPROPYLBENZENE	0.5 U	0.5 U	0.5 U	0.5 U	0.5 U	0.5 U	0.5 U	0.5 U	0.5 U
M+P-XYLENES	1 U	1 U	1 U	1 U	1 U	1 U	1 U	1 U	1 U
METHYL CYCLOHEXANE	0.5 U	0.5 U	0.5 U	0.5 U	0.5 U	0.5 U	0.5 U	0.5 U	0.5 U
METHYL TERT-BUTYL ETHER	0.5 U	0.5 U	0.5 U	0.5 U	0.5 U	0.5 U	0.5 U	0.5 U	0.5 U
METHYLENE CHLORIDE	0.5 U	0.5 U	0.5 U	0.5 U	0.5 U	0.5 U	0.5 U	0.5 U	0.5 U
O-XYLENE	0.5 U	0.5 U	0.5 U	0.5 U	0.5 U	0.5 U	0.5 U	0.5 U	0.5 U
STYRENE	0.5 U	0.5 U	0.5 U	0.5 U	0.5 U	0.5 U	0.5 U	0.5 U	0.5 U
TETRACHLOROETHENE	0.69 J	0.5 U	0.74 J	0.86 J	0.5 U	0.5 U	4.6 J	6.7	0.5 U
TOLUENE	0.5 U	0.5 U	0.5 U	0.5 U	0.5 U	0.5 U	0.5 U	0.5 U	0.5 U
TRANS-1,2-DICHLOROETHENE	0.5 U	0.5 U	0.5 U	0.5 U	0.5 U	0.5 U	0.5 U	0.5 U	0.5 U
TRANS-1,3-DICHLOROPROPENE	0.5 U	0.5 U	0.5 U	0.5 U	0.5 U	0.5 U	0.5 U	0.5 U	0.5 U
TRICHLOROETHENE	22.5	39.3	63.7	66.1	79.7	0.5 U	890	750	140
TRICHLOROFUOROMETHANE	0.5 U	0.5 U	0.5 U	0.5 U	0.5 U	0.5 U	0.5 U	0.5 U	0.5 U
VINYL CHLORIDE	0.5 U	0.5 U	0.5 U	0.5 U	0.5 U	0.5 U	0.5 U	0.5 U	0.5 U
<b>METHOD 8270D (UG/L)</b>									
1,4-DIOXANE	2.6	3.1	3.1	3.7	0.16	0.1 U	7.4	4.9 J	0.78 J
<b>METHOD 8260 SIM (UG/L)</b>									
1,4-DIOXANE	--	--	--	--	--	--	25 J	18 J	2.8 J
<b>METHOD 522 (UG/L)</b>									
1,4-DIOXANE	--	--	--	--	--	--	27 J	19 J	2.8 J

J = Estimated Value.  
U = non-detect

**Q2, 2020 (June) Validated Analytical Data**  
**Navy OU2 Groundwater Sampling**  
**Naval Weapons Industrial Reserve Plant Bethpage**  
Page 4 of 7

LOCATION SAMPLE ID SAMPLE DATE DUPLICATE	RE122D1 RE122D1-20200615 06/15/2020	RE122D2 RE122D2-20200610 06/10/2020	RE122D3 RE122D3-20200610 06/10/2020	RE123D1 RE123D1-20200612 06/12/2020	RE123D1 RE123D1-20200612-D 06/12/2020 RE123D1-20200612	RE123D2 RE123D2-20200612 06/12/2020	RE123D3 RE123D3-20200612 06/12/2020	RE125D1 RE125D1-20200609 06/9/2020	RE125D2 RE125D2-20200609 06/9/2020
<b>VOLATILES (UG/L)</b>									
1,1,1-TRICHLOROETHANE	0.75 U	37.5 U	0.75 U	0.75 U	0.75 U	0.75 U	0.75 U	0.75 U	0.4 J
1,1,2,2-TETRACHLOROETHANE	0.5 U	25 U	0.5 U	0.5 U	0.5 U	0.5 U	0.5 U	0.5 U	0.5 U
1,1,2-TRICHLOROETHANE	0.5 U	25 U	0.5 U	0.5 U	0.5 U	0.5 U	0.5 U	0.5 U	0.46 J
1,1,2-TRICHLOROTRIFLUOROETHANE	2.8 J	25 U	0.5 U	0.5 U	0.5 U	0.5 U	0.5 U	10.5	21.2
1,1-DICHLOROETHANE	0.5 U	25 U	0.5 U	0.5 U	0.5 U	0.5 U	0.5 U	0.5 U	0.5 U
1,1-DICHLOROETHENE	0.5 U	25 U	0.5 U	0.5 U	0.5 U	0.5 U	0.5 U	2 J	5.5
1,2-DICHLOROBENZENE	0.5 U	25 U	0.5 U	0.5 U	0.5 U	0.5 U	0.5 U	0.5 U	0.5 U
1,2-DICHLOROETHANE	0.75 U	37.5 U	0.75 U	0.75 U	0.75 U	0.75 U	0.75 U	0.75 U	0.75 U
1,2-DICHLOROPROPANE	0.5 U	25 U	0.5 U	0.5 U	0.5 U	0.5 U	0.5 U	0.5 U	0.5 U
1,3-DICHLOROBENZENE	0.5 U	25 U	0.5 U	0.5 U	0.5 U	0.5 U	0.5 U	0.5 U	0.5 U
1,4-DICHLOROBENZENE	0.5 U	25 U	0.5 U	0.5 U	0.5 U	0.5 U	0.5 U	0.5 U	0.5 U
2-BUTANONE	2.5 U	130 U	2.5 U	2.5 U	2.5 U	2.5 U	2.5 U	2.5 U	2.5 U
2-HEXANONE	3.8 U	190 U	3.8 U	3.8 U	3.8 U	3.8 U	3.8 U	3.8 U	3.8 U
4-METHYL-2-PENTANONE	2.5 U	130 U	2.5 U	2.5 U	2.5 U	2.5 U	2.5 U	2.5 U	2.5 U
ACETONE	4.7 J	130 U	2.5 U	2.5 U	2.5 U	2.5 U	2.5 U	2.5 U	2.5 U
BENZENE	0.5 U	25 U	0.5 U	0.5 U	0.5 U	0.5 U	0.5 U	0.5 U	0.5 U
BROMODICHLOROMETHANE	0.5 U	25 U	0.5 U	0.5 U	0.5 U	0.5 U	0.5 U	0.5 U	0.5 U
BROMOFORM	0.5 U	25 U	0.5 U	0.5 U	0.5 U	0.5 U	0.5 U	0.5 U	0.5 U
BROMOMETHANE	3.8 U	190 U	3.8 U	3.8 U	3.8 U	3.8 U	3.8 U	3.8 U	3.8 U
CARBON DISULFIDE	0.5 U	25 U	0.5 U	0.5 U	0.5 U	0.5 U	0.5 U	0.5 U	0.5 U
CARBON TETRACHLORIDE	0.5 U	25 U	0.5 U	0.5 U	0.5 U	0.5 U	0.5 U	0.5 U	0.51 J
CHLOROBENZENE	0.5 U	25 U	0.5 U	0.5 U	0.5 U	0.5 U	0.5 U	0.5 U	0.5 U
CHLORODIBROMOMETHANE	0.5 U	25 U	0.5 U	0.5 U	0.5 U	0.5 U	0.5 U	0.5 U	0.5 U
CHLOROETHANE	0.5 U	25 U	0.5 U	0.5 U	0.5 U	0.5 U	0.5 U	0.5 U	0.5 U
CHLOROFORM	0.5 U	25 U	0.5 U	0.5 U	0.5 U	0.5 U	0.5 U	0.75 J	0.44 J
CHLOROMETHANE	0.5 U	25 U	0.5 U	0.5 U	0.5 U	0.5 U	0.5 U	1.1 J	0.5 U
CIS-1,2-DICHLOROETHENE	1.5 J	25 U	0.5 U	0.5 U	0.5 U	0.5 U	0.5 U	3.7 J	4.4 J
CIS-1,3-DICHLOROPROPENE	0.5 U	25 U	0.5 U	0.5 U	0.5 U	0.5 U	0.5 U	0.5 U	0.5 U
ETHYLBENZENE	0.5 U	25 U	0.5 U	0.5 U	0.5 U	0.5 U	0.5 U	0.5 U	0.5 U
ISOPROPYLBENZENE	0.5 U	25 U	0.5 U	0.5 U	0.5 U	0.5 U	0.5 U	0.5 U	0.5 U
M+P-XYLENES	1 U	50 U	1 U	1 U	1 U	1 U	1 U	1 U	1 U
METHYL CYCLOHEXANE	0.5 U	25 U	0.5 U	0.5 U	0.5 U	0.5 U	0.5 U	0.5 U	0.5 U
METHYL TERT-BUTYL ETHER	0.5 U	25 U	0.5 U	0.5 U	0.5 U	0.5 U	0.5 U	0.5 U	0.5 U
METHYLENE CHLORIDE	0.5 U	25 U	0.5 U	0.5 U	0.5 U	0.5 U	0.5 U	0.5 U	0.5 U
O-XYLENE	0.5 U	25 U	0.5 U	0.5 U	0.5 U	0.5 U	0.5 U	0.5 U	0.5 U
STYRENE	0.5 U	25 U	0.5 U	0.5 U	0.5 U	0.5 U	0.5 U	0.5 U	0.5 U
TETRACHLOROETHENE	2 J	25 U	0.5 U	0.5 U	0.5 U	1.7 J	0.5 U	6.6	4.3 J
TOLUENE	0.5 U	25 U	0.5 U	0.5 U	0.5 U	0.5 U	0.5 U	0.5 U	0.5 U
TRANS-1,2-DICHLOROETHENE	0.5 U	25 U	0.5 U	0.5 U	0.5 U	0.5 U	0.5 U	0.5 U	0.5 U
TRANS-1,3-DICHLOROPROPENE	0.5 U	25 U	0.5 U	0.5 U	0.5 U	0.5 U	0.5 U	0.5 U	0.5 U
TRICHLOROETHENE	380	4900	2.4 J	8.6	8.5	2.7 J	0.5 U	220	310
TRICHLOROFUOROMETHANE	0.5 U	25 U	0.5 U	0.5 U	0.5 U	0.5 U	0.5 U	0.5 U	0.5 U
VINYL CHLORIDE	0.5 U	25 U	0.5 U	0.5 U	0.5 U	0.5 U	0.5 U	0.5 U	0.5 U
<b>METHOD 8270D (UG/L)</b>									
1,4-DIOXANE	4	4.7	0.1 U	1.3	1.2	0.51	0.1 U	6	6.5
<b>METHOD 8260 SIM (UG/L)</b>									
1,4-DIOXANE	--	--	--	--	--	--	--	--	--
<b>METHOD 522 (UG/L)</b>									
1,4-DIOXANE	--	--	--	--	--	--	--	--	--

J = Estimated Value.  
U = non-detect

**Q2, 2020 (June) Validated Analytical Data**  
**Navy OU2 Groundwater Sampling**  
**Naval Weapons Industrial Reserve Plant Bethpage**  
Page 5 of 7

LOCATION SAMPLE ID SAMPLE DATE DUPLICATE	RE125D3 RE125D3-20200609 06/9/2020	RE126D1 RE126D1-20200611 06/11/2020	RE126D2 RE126D2-20200611 06/11/2020	RE126D3 RE126D3-20200611 06/11/2020	RE131D1 RE131D1-20200609 06/9/2020	RE131D2 RE131D2-20200609 06/9/2020	RE131D3 RE131D3-20200609 06/9/2020	RE132D1 RE132D1-20200608 06/8/2020	RE132D2 RE132D2-20200608 06/8/2020
<b>VOLATILES (UG/L)</b>									
1,1,1-TRICHLOROETHANE	0.75 U	0.75 U	0.75 U	0.75 U	0.75 U	0.75 U	0.75 U	0.75 U	0.75 U
1,1,2,2-TETRACHLOROETHANE	0.5 U	0.5 U	0.5 U	0.5 U	0.5 U	0.5 U	0.5 U	0.5 U	0.5 U
1,1,2-TRICHLOROETHANE	0.5 U	0.5 U	0.5 U	0.5 U	0.5 U	0.5 U	0.5 U	0.5 U	0.5 U
1,1,2-TRICHLOROTRIFLUOROETHANE	68.8	0.5 U	0.5 U	0.5 U	5.7	210	280	5.4	3.5 J
1,1-DICHLOROETHANE	0.5 U	0.5 U	0.5 U	0.5 U	0.5 U	0.5 U	0.5 U	0.5 U	0.5 U
1,1-DICHLOROETHENE	0.7 J	0.5 U	0.5 U	0.5 U	0.71 J	2.1 J	1.9 J	1 J	0.5 U
1,2-DICHLOROBENZENE	0.5 U	0.5 U	0.5 U	0.5 U	0.5 U	0.5 U	0.5 U	0.5 U	0.5 U
1,2-DICHLOROETHANE	0.75 U	0.75 U	0.75 U	0.75 U	0.75 U	0.75 U	0.75 U	0.75 U	0.75 U
1,2-DICHLOROPROPANE	0.5 U	0.5 U	0.5 U	0.5 U	0.5 U	0.5 U	0.5 U	0.5 U	0.5 U
1,3-DICHLOROBENZENE	0.5 U	0.5 U	0.5 U	0.5 U	0.5 U	0.5 U	0.5 U	0.5 U	0.5 U
1,4-DICHLOROBENZENE	0.5 U	0.5 U	0.5 U	0.5 U	0.5 U	0.5 U	0.5 U	0.5 U	0.5 U
2-BUTANONE	2.5 U	2.5 U	2.5 U	2.5 U	2.5 U	2.5 U	2.5 U	2.5 U	2.5 U
2-HEXANONE	3.8 U	3.8 U	3.8 U	3.8 U	3.8 U	3.8 U	3.8 U	3.8 U	3.8 U
4-METHYL-2-PENTANONE	2.5 U	2.5 U	2.5 U	2.5 U	2.5 U	2.5 U	2.5 U	2.5 U	2.5 U
ACETONE	2.5 U	25 U	25 U	25 U	2.5 U	2.5 U	2.5 U	2.5 U	2.5 U
BENZENE	0.5 U	0.5 U	0.5 U	0.5 U	0.5 U	0.5 U	0.5 U	0.5 U	0.5 U
BROMODICHLOROMETHANE	0.5 U	0.5 U	0.5 U	0.5 U	0.5 U	0.5 U	0.5 U	0.5 U	0.5 U
BROMOFORM	0.5 U	0.5 U	0.5 U	0.5 U	0.5 U	0.5 U	0.5 U	0.5 U	0.5 U
BROMOMETHANE	3.8 U	3.8 U	3.8 U	3.8 U	3.8 U	3.8 U	3.8 U	3.8 U	3.8 U
CARBON DISULFIDE	0.5 U	0.5 U	0.5 U	0.5 U	0.5 U	0.5 U	0.5 U	0.5 U	0.5 U
CARBON TETRACHLORIDE	0.5 U	0.5 U	0.5 U	0.5 U	0.5 U	0.5 U	0.5 U	0.5 U	0.5 U
CHLOROBENZENE	0.5 U	0.5 U	0.5 U	0.5 U	0.5 U	0.5 U	0.5 U	0.5 U	0.5 U
CHLORODIBROMOMETHANE	0.5 U	0.5 U	0.5 U	0.5 U	0.5 U	0.5 U	0.5 U	0.5 U	0.5 U
CHLOROETHANE	0.5 U	0.5 U	0.5 U	0.5 U	0.5 U	0.5 U	0.5 U	0.5 U	0.5 U
CHLOROFORM	0.5 U	0.5 U	0.5 U	0.5 U	1.5 J	0.4 J	0.5 U	1.8 J	0.5 U
CHLOROMETHANE	0.5 U	0.5 U	0.5 U	0.5 U	0.5 U	0.5 U	0.5 U	0.5 U	0.5 U
CIS-1,2-DICHLOROETHENE	1.9 J	0.5 U	1.4 J	0.5 U	3.8 J	4.8 J	0.79 J	1.9 J	0.5 U
CIS-1,3-DICHLOROPROPENE	0.5 U	0.5 U	0.5 U	0.5 U	0.5 U	0.5 U	0.5 U	0.5 U	0.5 U
ETHYLBENZENE	0.5 U	0.5 U	0.5 U	0.5 U	0.5 U	0.5 U	0.5 U	0.5 U	0.5 U
ISOPROPYLBENZENE	0.5 U	0.5 U	0.5 U	0.5 U	0.5 U	0.5 U	0.5 U	0.5 U	0.5 U
M+P-XYLENES	1 U	1 U	1 U	1 U	1 U	1 U	1 U	1 U	1 U
METHYL CYCLOHEXANE	0.5 U	0.5 U	0.5 U	0.5 U	0.5 U	0.5 U	0.5 U	0.5 U	0.5 U
METHYL TERT-BUTYL ETHER	0.5 U	0.5 U	0.5 U	0.5 U	0.53 J	0.5 U	0.5 U	0.94 J	0.5 U
METHYLENE CHLORIDE	0.5 U	0.5 U	0.5 U	0.5 U	0.5 U	0.5 U	0.5 U	0.5 U	0.5 U
O-XYLENE	0.5 U	0.5 U	0.5 U	0.5 U	0.5 U	0.5 U	0.5 U	0.5 U	0.5 U
STYRENE	0.5 U	0.5 U	0.5 U	0.5 U	0.5 U	0.5 U	0.5 U	0.5 U	0.5 U
TETRACHLOROETHENE	4.8 J	0.98 J	0.5 U	1.3 J	8.8	9.9	5.8	2.4 J	0.5 U
TOLUENE	0.5 U	0.5 U	0.5 U	0.5 U	0.5 U	0.5 U	0.5 U	0.5 U	0.5 U
TRANS-1,2-DICHLOROETHENE	0.5 U	0.5 U	0.5 U	0.5 U	0.5 U	0.5 U	0.5 U	0.5 U	0.5 U
TRANS-1,3-DICHLOROPROPENE	0.5 U	0.5 U	0.5 U	0.5 U	0.5 U	0.5 U	0.5 U	0.5 U	0.5 U
TRICHLOROETHENE	170	33.1	460	3 J	200	100	18.8	98.6	1.9 J
TRICHLOROFUOROMETHANE	0.5 U	0.5 U	0.5 U	0.5 U	0.5 U	0.5 U	0.5 U	0.5 U	0.5 U
VINYL CHLORIDE	0.5 U	0.5 U	0.5 U	0.5 U	0.5 U	0.5 U	0.5 U	0.5 U	0.5 U
<b>METHOD 8270D (UG/L)</b>									
1,4-DIOXANE	2.6	3.2	3	0.38	6.6	7.6	1.5	2.8	5.1
<b>METHOD 8260 SIM (UG/L)</b>									
1,4-DIOXANE	--	--	--	--	--	--	--	--	--
<b>METHOD 522 (UG/L)</b>									
1,4-DIOXANE	--	--	--	--	--	--	--	--	--

J = Estimated Value.

U = non-detect

**Q2, 2020 (June) Validated Analytical Data**  
**Navy OU2 Groundwater Sampling**  
**Naval Weapons Industrial Reserve Plant Bethpage**  
Page 6 of 7

LOCATION SAMPLE ID SAMPLE DATE DUPLICATE	RE132D3 RE132D3-20200608 06/8/2020	RE132D4 RE132D4-20200608 06/8/2020	RE132D5 RE132D5-20200608 06/8/2020	RE132D6 RE132D6-20200608 06/8/2020	RE132D7 RE132D7-20200608 06/8/2020	RE132D7 RE132D7-20200608-D 06/8/2020 RE132D7-20200608	RE134D1 RE134D1-20200608 06/8/2020	RE134D2 RE134D2-20200608 06/8/2020	RE134D3 RE134D3-20200608 06/8/2020
<b>VOLATILES (UG/L)</b>									
1,1,1-TRICHLOROETHANE	0.75 U	0.75 U	0.75 U	15 U	7.5 U	0.32 J	0.75 U	0.75 U	0.75 U
1,1,2,2-TETRACHLOROETHANE	0.5 U	0.5 U	0.5 U	10 U	5 U	0.5 U	0.5 U	0.5 U	0.5 U
1,1,2-TRICHLOROETHANE	0.5 U	0.5 U	0.35 J	10 U	5 U	0.66 J	0.5 U	0.5 U	0.5 U
1,1,2-TRICHLOROTRIFLUOROETHANE	5.1	7.9	12.2	38.8 J	14 J	19.6	0.5 U	25.5	620
1,1-DICHLOROETHANE	0.5 U	0.5 U	0.5 U	10 U	5 U	0.5 U	0.5 U	0.5 U	0.5 U
1,1-DICHLOROETHENE	0.5 U	1.2 J	2.2 J	13.6 J	5 U	4.4 J	0.5 U	0.53 J	5.1
1,2-DICHLOROBENZENE	0.5 U	0.5 U	0.5 U	10 U	5 U	0.5 U	0.5 U	0.5 U	0.5 U
1,2-DICHLOROETHANE	0.75 U	0.75 U	0.75 U	15 U	7.5 U	0.75 U	0.75 U	0.75 U	0.75 U
1,2-DICHLOROPROPANE	0.5 U	0.5 U	0.5 U	10 U	5 U	0.5 U	0.5 U	0.5 U	0.67 J
1,3-DICHLOROBENZENE	0.5 U	0.5 U	0.5 U	10 U	5 U	0.5 U	0.5 U	0.5 U	0.5 U
1,4-DICHLOROBENZENE	0.5 U	0.5 U	0.5 U	10 U	5 U	0.5 U	0.5 U	0.5 U	0.5 U
2-BUTANONE	2.5 U	2.5 U	2.5 U	50 U	25 U	2.5 U	2.5 U	2.5 U	2.5 U
2-HEXANONE	3.8 U	3.8 U	3.8 U	75 U	37.5 U	3.8 U	3.8 U	3.8 U	3.8 U
4-METHYL-2-PENTANONE	2.5 U	2.5 U	2.5 U	50 U	25 U	2.5 U	2.5 U	2.5 U	2.5 U
ACETONE	2.5 U	2.5 U	2.5 U	50 U	25 U	2.5 U	2.5 U	2.5 U	2.5 U
BENZENE	0.5 U	0.5 U	0.5 U	10 U	5 U	0.5 U	0.5 U	0.5 U	0.5 U
BROMODICHLOROMETHANE	0.5 U	0.5 U	0.5 U	10 U	5 U	0.5 U	0.5 U	0.5 U	0.5 U
BROMOFORM	0.5 U	0.5 U	0.5 U	10 U	5 U	0.5 U	0.5 U	0.5 U	0.5 U
BROMOMETHANE	3.8 U	3.8 U	3.8 U	75 U	37.5 U	3.8 U	3.8 U	3.8 U	3.8 U
CARBON DISULFIDE	0.5 U	0.5 U	0.5 U	10 U	5 U	0.5 U	0.5 U	0.5 U	0.5 U
CARBON TETRACHLORIDE	0.5 U	0.5 U	0.62 J	10 U	5 U	1.3 J	0.5 U	0.5 U	0.5 U
CHLOROBENZENE	0.5 U	0.5 U	0.5 U	10 U	5 U	0.5 U	0.5 U	0.5 U	0.5 U
CHLORODIBROMOMETHANE	0.5 U	0.5 U	0.5 U	10 U	5 U	0.5 U	0.5 U	0.5 U	0.5 U
CHLOROETHANE	0.5 U	0.5 U	0.5 U	10 U	5 U	0.5 U	0.5 U	0.5 U	0.5 U
CHLOROFORM	0.5 U	0.31 J	0.86 J	10 U	5 U	1.5 J	0.5 U	0.5 U	0.5 U
CHLOROMETHANE	0.5 U	0.5 U	0.5 U	10 U	5 U	0.5 U	0.5 U	0.5 U	0.5 U
CIS-1,2-DICHLOROETHENE	1 J	2.5 J	1.4 J	10 U	5 U	2.2 J	0.5 U	1.9 J	3.7 J
CIS-1,3-DICHLOROPROPENE	0.5 U	0.5 U	0.5 U	10 U	5 U	0.5 U	0.5 U	0.5 U	0.5 U
ETHYLBENZENE	0.5 U	0.5 U	0.5 U	10 U	5 U	0.5 U	0.5 U	0.5 U	0.5 U
ISOPROPYLBENZENE	0.5 U	0.5 U	0.5 U	10 U	5 U	0.5 U	0.5 U	0.5 U	0.5 U
M+P-XYLENES	1 U	1 U	1 U	20 U	10 U	1 U	1 U	1 U	1 U
METHYL CYCLOHEXANE	0.5 U	0.5 U	0.5 U	10 U	5 U	0.5 U	0.5 U	0.5 U	0.5 U
METHYL TERT-BUTYL ETHER	0.5 U	0.5 U	0.5 U	10 U	5 U	0.5 U	0.5 U	0.5 U	0.5 U
METHYLENE CHLORIDE	0.5 U	0.5 U	0.5 U	10 U	5 U	0.5 U	0.5 U	0.5 U	0.5 U
O-XYLENE	0.5 U	0.5 U	0.5 U	10 U	5 U	0.5 U	0.5 U	0.5 U	0.5 U
STYRENE	0.5 U	0.5 U	0.5 U	10 U	5 U	0.5 U	0.5 U	0.5 U	0.5 U
TETRACHLOROETHENE	2.3 J	4 J	0.5 U	5.1 J	5 U	1.1 J	0.7 J	13.9	60.6
TOLUENE	0.5 U	0.5 U	0.5 U	10 U	5 U	0.5 U	0.5 U	0.5 U	0.5 U
TRANS-1,2-DICHLOROETHENE	0.5 U	0.5 U	0.5 U	10 U	5 U	0.5 U	0.5 U	0.5 U	0.5 U
TRANS-1,3-DICHLOROPROPENE	0.5 U	0.5 U	0.5 U	10 U	5 U	0.5 U	0.5 U	0.5 U	0.5 U
TRICHLOROETHENE	97.6	210	94.1	1900	810	920	5.9	110	160
TRICHLOROFUOROMETHANE	0.5 U	0.26 J	0.5 U	10 U	5 U	0.5 U	0.5 U	0.25 J	0.5 U
VINYL CHLORIDE	0.5 U	0.5 U	0.5 U	10 U	5 U	0.5 U	0.5 U	0.5 U	0.5 U
<b>METHOD 8270D (UG/L)</b>									
1,4-DIOXANE	4.9	2.5	4.8	4.5	1.6	1.4	0.46	6.8	6.8
<b>METHOD 8260 SIM (UG/L)</b>									
1,4-DIOXANE	--	--	--	--	--	--	--	--	--
<b>METHOD 522 (UG/L)</b>									
1,4-DIOXANE	--	--	--	--	--	--	--	--	--

J = Estimated Value.  
U = non-detect



**Q2, 2020 (June) Validated Analytical Data**  
**Navy OU2 Groundwater Sampling**  
**Naval Weapons Industrial Reserve Plant Bethpage**  
Page 7 of 7

LOCATION SAMPLE ID SAMPLE DATE DUPLICATE	RE134D4 RE134D4-20200609 06/9/2020	RE135D1 RE135D1-20200609 06/9/2020	RE135D1 RE135D1-20200609-D 06/9/2020 RE135D1-20200609	RE135D2 RE135D2-20200609 06/9/2020	RE135D3 RE135D3-20200609 06/9/2020	RE139D1 RE139D1-20200612 06/12/2020	RE139D2 RE139D2-20200616 06/16/2020	TT101D TT101D-20200616 06/16/2020	TT101D1 TT101D1-20200615 06/15/2020	TT101D1 TT101D1-20200615-D 06/15/2020 TT101D1-20200615	TT101D2 TT101D2-20200615 06/15/2020
<b>VOLATILES (UG/L)</b>											
1,1,1-TRICHLOROETHANE	0.75 U	0.75 U	0.75 U	0.75 U	0.75 U	0.75 U	0.75 U	0.75 U	0.75 U	0.7 J	0.75 U
1,1,2,2-TETRACHLOROETHANE	0.5 U	0.5 U	0.5 U	0.5 U	0.5 U	0.5 U	0.5 U	0.5 U	0.5 U	0.5 U	0.5 U
1,1,2-TRICHLOROETHANE	0.5 U	0.5 U	0.5 U	0.5 U	0.5 U	0.5 U	0.87 J	0.64 J	0.5 U	0.6 J	0.92 J
1,1,2-TRICHLOROTRIFLUOROETHANE	230	0.5 U	0.5 U	0.5 U	5.4	3.6 J	1.8 J	16.5	22	22.4	32
1,1-DICHLOROETHANE	0.5 U	0.5 U	0.5 U	0.5 U	0.5 U	0.5 U	0.5 U	0.5 U	0.5 U	0.5 U	0.5 U
1,1-DICHLOROETHENE	1.7 J	0.5 U	0.5 U	0.5 U	0.61 J	2.5 J	1.9 J	3.3 J	8.3	8.8	5.6
1,2-DICHLOROBENZENE	0.5 U	0.5 U	0.5 U	0.5 U	0.5 U	0.5 U	0.5 U	0.5 U	0.5 U	0.5 U	0.5 U
1,2-DICHLOROETHANE	0.75 U	0.75 U	0.75 U	0.75 U	0.75 U	0.75 U	0.75 U	0.75 U	0.75 U	0.75 U	0.75 U
1,2-DICHLOROPROPANE	0.5 U	0.5 U	0.5 U	2.1 J	3 J	0.5 U	0.5 U	0.5 U	0.5 U	0.5 U	0.5 U
1,3-DICHLOROBENZENE	0.5 U	0.5 U	0.5 U	0.5 U	0.5 U	0.5 U	0.5 U	0.5 U	0.5 U	0.5 U	0.5 U
1,4-DICHLOROBENZENE	0.5 U	0.5 U	0.5 U	0.5 U	0.5 U	0.5 U	0.5 U	0.5 U	0.5 U	0.5 U	0.5 U
2-BUTANONE	2.5 U	2.5 U	2.5 U	2.5 U	2.5 U	2.5 U	2.5 U	2.5 U	2.5 U	2.5 U	2.5 U
2-HEXANONE	3.8 U	3.8 U	3.8 U	3.8 U	3.8 U	3.8 U	3.8 U	3.8 U	3.8 U	3.8 U	3.8 U
4-METHYL-2-PENTANONE	2.5 U	2.5 U	2.5 U	2.5 U	2.5 U	2.5 U	2.5 U	2.5 U	2.5 U	2.5 U	2.5 U
ACETONE	2.5 U	2.5 U	2.5 U	2.5 U	2.5 U	6.3 J	2.5 U	2.5 U	5.3 J	5.4 J	2.5 U
BENZENE	0.5 U	0.5 U	0.5 U	0.5 U	0.5 U	0.5 U	0.5 U	0.5 U	0.5 U	0.5 U	0.5 U
BROMODICHLOROMETHANE	0.5 U	0.5 U	0.5 U	0.5 U	0.5 U	0.5 U	0.5 U	0.5 U	0.5 U	0.5 U	0.5 U
BROMOFORM	0.5 U	0.5 U	0.5 U	0.5 U	0.5 U	0.5 U	0.5 U	0.5 U	0.5 U	0.5 U	0.5 U
BROMOMETHANE	3.8 U	3.8 U	3.8 U	3.8 U	3.8 U	3.8 U	3.8 U	3.8 U	3.8 U	3.8 U	3.8 U
CARBON DISULFIDE	0.5 U	0.5 U	0.5 U	0.5 U	0.5 U	0.5 U	0.5 U	0.5 U	0.5 U	0.5 U	0.5 U
CARBON TETRACHLORIDE	0.5 U	0.5 U	0.5 U	0.5 U	0.5 U	0.95 J	1.5 J	0.5 U	1.3 J	1.5 J	1.3 J
CHLOROBENZENE	0.5 U	0.5 U	0.5 U	0.5 U	0.5 U	0.5 U	0.5 U	0.5 U	0.5 U	0.5 U	0.5 U
CHLORODIBROMOMETHANE	0.5 U	0.5 U	0.5 U	0.5 U	0.5 U	0.5 U	0.5 U	0.5 U	0.5 U	0.5 U	0.5 U
CHLOROETHANE	0.5 U	0.5 U	0.5 U	0.5 U	0.5 U	0.5 U	0.5 U	0.5 U	0.5 U	0.5 U	0.5 U
CHLOROFORM	0.5 U	0.92 J	0.92 J	0.5 U	0.5 U	0.73 J	0.43 J	0.59 J	0.98 J	1 J	1.1 J
CHLOROMETHANE	0.5 U	0.5 U	0.5 U	0.7 J	0.5 U	0.5 U	0.5 U	0.5 U	0.5 U	0.5 U	0.5 U
CIS-1,2-DICHLOROETHENE	0.92 J	0.5 U	0.5 U	0.5 U	3.7 J	1.4 J	1.5 J	3.6 J	2.3 J	2.4 J	0.5 U
CIS-1,3-DICHLOROPROPENE	0.5 U	0.5 U	0.5 U	0.5 U	0.5 U	0.5 U	0.5 U	0.5 U	0.5 U	0.5 U	0.5 U
ETHYLBENZENE	0.5 U	0.5 U	0.5 U	0.5 U	0.5 U	0.5 U	0.5 U	0.5 U	0.5 U	0.5 U	0.5 U
ISOPROPYLBENZENE	0.5 U	0.5 U	0.5 U	0.5 U	0.5 U	0.5 U	0.5 U	0.5 U	0.5 U	0.5 U	0.5 U
M+P-XYLENES	1 U	1 U	1 U	1 U	1 U	1 U	1 U	1 U	1 U	1 U	1 U
METHYL CYCLOHEXANE	0.5 U	0.5 U	0.5 U	0.5 U	0.5 U	0.5 U	0.5 U	0.5 U	0.5 U	0.5 U	0.5 U
METHYL TERT-BUTYL ETHER	0.5 U	0.5 U	0.5 U	0.5 U	0.5 U	0.5 U	0.5 U	0.5 U	0.5 U	0.5 U	0.5 U
METHYLENE CHLORIDE	0.5 U	0.5 U	0.5 U	0.5 U	0.5 U	0.5 U	0.5 U	0.5 U	0.5 U	0.5 U	0.5 U
O-XYLENE	0.5 U	0.5 U	0.5 U	0.5 U	0.5 U	0.5 U	0.5 U	0.5 U	0.5 U	0.5 U	0.5 U
STYRENE	0.5 U	0.5 U	0.5 U	0.5 U	0.5 U	0.5 U	0.5 U	0.5 U	0.5 U	0.5 U	0.5 U
TETRACHLOROETHENE	8.9	0.5 U	0.5 U	0.5 U	11.6	0.5 U	0.5 U	0.77 J	0.5 U	0.5 U	2.9 J
TOLUENE	0.5 U	0.5 U	0.5 U	0.5 U	0.5 U	0.5 U	0.5 U	0.5 U	0.5 U	0.5 U	0.5 U
TRANS-1,2-DICHLOROETHENE	0.5 U	0.5 U	0.5 U	0.5 U	0.5 U	0.5 U	0.5 U	0.5 U	0.5 U	0.5 U	0.5 U
TRANS-1,3-DICHLOROPROPENE	0.5 U	0.5 U	0.5 U	0.5 U	0.5 U	0.5 U	0.5 U	0.5 U	0.5 U	0.5 U	0.5 U
TRICHLOROETHENE	23	0.29 J	0.5 U	0.5 U	14.9	120	160	110	260	260	1400
TRICHLOROFLUOROMETHANE	0.5 U	0.5 U	0.5 U	0.5 U	0.5 U	0.5 U	0.5 U	0.5 U	0.5 U	0.5 U	0.5 U
VINYL CHLORIDE	0.5 U	0.5 U	0.5 U	0.5 U	0.5 U	0.5 U	0.5 U	0.5 U	0.5 U	0.5 U	0.62 J
<b>METHOD 8270D (UG/L)</b>											
1,4-DIOXANE	1.4	0.31	0.33	0.11	0.17	1.3 J	0.78 J	5	3.4 J	5.4 J	3.3
<b>METHOD 8260 SIM (UG/L)</b>											
1,4-DIOXANE	--	--	--	--	--	--	--	--	--	--	--
<b>METHOD 522 (UG/L)</b>											
1,4-DIOXANE	--	--	--	--	--	--	--	--	--	--	--

J = Estimated Value.  
U = non-detect