

Pelton, Jason M (DEC)

From: Wu, Ernie <Ernie.Wu@tetrattech.com>
Sent: Tuesday, January 26, 2021 4:38 PM
To: Pelton, Jason M (DEC); Sullivan, James (HEALTH); Irwin, Donald (NASSAU); Putnam, Robin (NASSAU); Castle, Richard (NASSAU); Stein, Carol; Azzam, Nidal; Richard Lenz; Murray, Brian S CIV USN NAVFAC MIDLANT NOR (USA); Brayack, David; Francisco, Ben; Varricchio, Vin; Walls, Kristen
Subject: Q3, 2020 (September) Validated Data, OU2 Navy groundwater sampling
Attachments: OU2_TT_Wells_September_2020.pdf; Figure 2_OU2_012621.pdf

ATTENTION: This email came from an external source. Do not open attachments or click on links from unknown senders or unexpected emails.

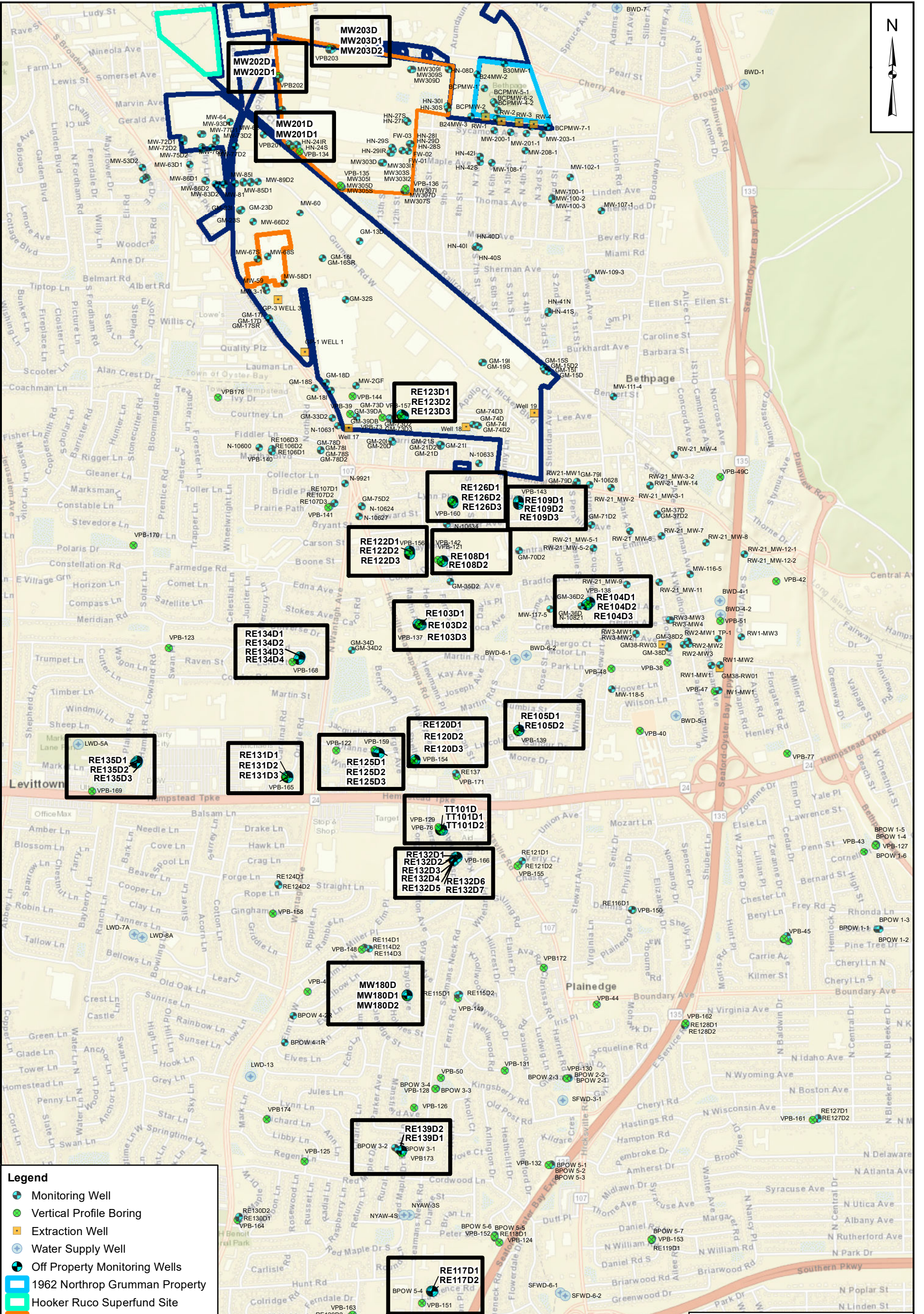
All:

As per discussions between the Navy and NYSDEC, NYSDEC requested that the Navy submit the validated data as soon as the information is available. Please find attached, a pdf table of the Q3, 2020 (September) OU2 groundwater sampling data. The data includes VOCs and 1,4-dioxane results. A figure has also been included depicting the locations of groundwater monitoring wells sampled.

Ernie Wu | Project Manager | Environmental Scientist
Main: 757.461.3768 | Direct: 757.466.4901 | Fax: 757.461.4148
ernie.wu@tetrattech.com

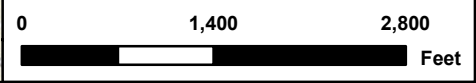
Tetra Tech, Inc | Norfolk Office
Twin Oaks I, Suite 102, 5700 Lake Wright Drive | Norfolk, VA 23502 | www.tetrattech.com

PLEASE NOTE: This message, including any attachments, may include privileged, confidential and/or inside information. Any distribution or use of this communication by anyone other than the intended recipient is strictly prohibited and may be unlawful. If you are not the intended recipient, please notify the sender by replying to this message and then delete it from your system.



Legend

- Monitoring Well
- Vertical Profile Boring
- Extraction Well
- Water Supply Well
- Off Property Monitoring Wells
- 1962 Northrop Grumman Property
- Hooker Ruco Superfund Site
- 1997 NWIRP Bethpage Property
- 1997 Northrop Grumman Property



**LOCATION MAP OF WELLS
OU2 GROUNDWATER SAMPLING - SEPT 2020 EVENT
NAVAL WEAPONS INDUSTRIAL RESERVE PLANT
BETHPAGE, NEW YORK**

CTO N62470-16-D-9008 WE13	
DRAWN BY MC	DATE 01/26/21
CHECKED BY RD	DATE 01/26/21
FIGURE NUMBER 2	

NOR PIGIS files:\Bethpage\MAP DOCS\MXD\BIB-OU2-2020\WP_MWBP_ownership_2021_012621.mxd\MCC

Q3, 2020 (September) Validated Analytical Data
 Navy OU2 Groundwater Sampling
 Naval Weapons Industrial Reserve Plant Bethpage
 Page 1 of 6

LOCATION SAMPLE ID SAMPLE DATE DUPLICATE	MW201D MW201D-20200919 09/19/2020	MW201D1 MW201D1-20200919 09/19/2020	MW202D MW202D-20200919 09/19/2020	MW202D1 MW202D1-20200919 09/19/2020	MW203D MW203D-20200919 09/19/2020	MW203D1 MW203D1-20200919 09/19/2020	MW203D2 MW203D2-20200919 09/19/2020	RE103D1 RE103D1-20200921 09/21/2020	RE103D2 RE103D2-20200921 09/21/2020	RE103D3 RE103D3-20200921 09/21/2020	RE103D3 RE103D3-20200921-D 09/21/2020 RE103D3-20200921	RE104D1 RE104D1-20200917 09/17/2020
VOLATILES (UG/L)												
1,1,1-TRICHLOROETHANE	7	0.75 U	0.75 U	0.75 U	1.2 J	2.8 J	0.75 U	0.75 U	0.75 U	0.75 U	0.75 U	0.75 U
1,1,2,2-TETRACHLOROETHANE	0.5 U	0.5 U	0.5 U	0.5 U	0.5 U	0.5 U	0.5 U	0.5 U	0.5 U	0.5 U	0.5 U	0.5 U
1,1,2-TRICHLOROETHANE	0.45 J	0.5 U	0.5 U	0.5 U	0.5 U	0.5 U	0.5 U	0.33 J	0.5 U	0.5 U	0.29 J	0.5 U
1,1,2-TRICHLOROTRIFLUOROETHANE	3.5 J	0.5 U	0.5 U	0.5 U	0.5 U	0.5 U	0.5 U	5.9	3.2 J	6.3	6.1	0.99 J
1,1-DICHLOROETHANE	3.8 J	0.5 U	2.8 J	3.3 J	2.6 J	16.1	1.9 J	0.5 U	0.5 U	0.5 U	0.5 U	0.5 U
1,1-DICHLOROETHENE	46.1	0.5 U	1.4 J	0.5 U	1.6 J	6.7	0.62 J	2.7 J	0.5 U	0.5 U	0.65 J	0.5 U
1,2-DICHLOROBENZENE	0.5 U	0.5 U	0.5 U	0.5 U	0.5 U	0.5 U	0.5 U	0.5 U	0.5 U	0.5 U	0.5 U	0.5 U
1,2-DICHLOROETHANE	0.75 U	0.75 U	0.75 U	1.4 J	0.75 U	0.75 U	0.75 U	0.75 U	0.75 U	0.75 U	0.75 U	0.75 U
1,2-DICHLOROPROPANE	0.5 U	0.5 U	0.5 U	0.5 U	0.5 U	0.5 U	0.5 U	0.5 U	0.5 U	0.5 U	0.5 U	0.5 U
1,3-DICHLOROBENZENE	0.5 U	0.5 U	0.5 U	0.5 U	0.5 U	0.5 U	0.5 U	0.5 U	0.5 U	0.5 U	0.5 U	0.5 U
1,4-DICHLOROBENZENE	0.5 U	0.5 U	0.5 U	0.5 U	0.5 U	0.5 U	0.5 U	0.5 U	0.5 U	0.5 U	0.5 U	0.5 U
2-BUTANONE	2.5 U	2.5 U	2.5 U	2.5 U	2.5 U	2.5 U	2.5 U	2.5 U	2.5 U	2.5 U	2.5 U	2.5 U
2-HEXANONE	3.8 U	3.8 U	3.8 U	3.8 U	3.8 U	3.8 U	3.8 U	3.8 U	3.8 U	3.8 U	3.8 U	3.8 U
4-METHYL-2-PENTANONE	2.5 U	2.5 U	2.5 U	2.5 U	2.5 U	2.5 U	2.5 U	2.5 U	2.5 U	2.5 U	2.5 U	2.5 U
ACETONE	2.5 U	2.5 U	2.5 U	5.3 J	2.5 U	3 J	2.5 U	2.5 U	2.5 U	2.5 U	2.5 U	25 U
BENZENE	0.5 U	0.5 U	0.5 U	0.5 U	0.5 U	0.5 U	0.5 U	0.5 U	0.5 U	0.5 U	0.5 U	0.5 U
BROMODICHLOROMETHANE	0.5 U	0.5 U	0.5 U	0.5 U	0.5 U	0.5 U	0.5 U	0.5 U	0.5 U	0.5 U	0.5 U	0.5 U
BROMOFORM	0.5 U	0.5 U	0.5 U	0.5 U	0.5 U	0.5 U	0.5 U	0.5 U	0.5 U	0.5 U	0.5 U	0.5 U
BROMOMETHANE	3.8 U	3.8 U	3.8 U	3.8 U	3.8 U	3.8 U	3.8 U	3.8 U	3.8 U	3.8 U	3.8 U	3.8 U
CARBON DISULFIDE	0.5 U	0.5 U	0.5 U	0.5 U	0.5 U	0.5 U	0.5 U	0.5 U	0.5 U	0.5 U	0.5 U	0.5 U
CARBON TETRACHLORIDE	0.5 U	0.5 U	0.5 U	0.5 U	0.5 U	0.5 U	0.5 U	0.5 U	0.5 U	0.5 U	0.26 J	0.5 U
CHLOROBENZENE	0.5 U	0.5 U	0.5 U	0.5 U	0.5 U	0.5 U	0.5 U	0.5 U	0.5 U	0.5 U	0.5 U	0.5 U
CHLORODIBROMOMETHANE	0.5 U	0.5 U	0.5 U	0.5 U	0.5 U	0.5 U	0.5 U	0.5 U	0.5 U	0.5 U	0.5 U	0.5 U
CHLOROETHANE	0.5 U	0.5 U	0.5 U	0.5 U	0.5 U	0.5 U	0.5 U	0.5 U	0.5 U	0.5 U	0.5 U	0.5 U
CHLOROFORM	4.3 J	0.5 U	0.5 U	1.5 J	0.69 J	1 J	0.5 U	0.43 J	0.62 J	0.57 J	0.54 J	0.5 U
CHLOROMETHANE	0.5 U	0.5 U	0.5 U	1.3 J	0.5 U	0.5 U	0.5 U	0.5 U	0.5 U	0.5 U	0.32 J	0.89 J
CIS-1,2-DICHLOROETHENE	2.5 J	0.5 U	7.1	30.2	2.8 J	0.76 J	0.54 J	1.7 J	0.42 J	0.5 U	1 J	0.5 U
CIS-1,3-DICHLOROPROPENE	0.5 U	0.5 U	0.5 U	0.5 U	0.5 U	0.5 U	0.5 U	0.5 U	0.5 U	0.5 U	0.5 U	0.5 U
ETHYLBENZENE	0.5 U	0.5 U	0.5 U	0.5 U	0.5 U	0.5 U	0.5 U	0.5 U	0.5 U	0.5 U	0.5 U	0.5 U
ISOPROPYLBENZENE	0.5 U	0.5 U	0.5 U	0.5 U	0.5 U	0.5 U	0.5 U	0.5 U	0.5 U	0.5 U	0.5 U	0.5 U
M+P-XYLENES	1 U	1 U	1 U	1 U	1 U	1 U	1 U	1 U	1 U	1 U	1 U	1 U
METHYL CYCLOHEXANE	0.5 U	0.5 U	0.5 U	0.5 U	0.5 U	0.5 U	0.5 U	0.5 U	0.5 U	0.5 U	0.5 U	0.5 U
METHYL TERT-BUTYL ETHER	0.5 U	0.5 U	0.38 J	5.9	0.5 U	0.35 J	0.5 U	0.5 U	0.5 U	0.5 U	0.5 U	0.5 U
METHYLENE CHLORIDE	0.5 U	0.5 U	0.5 U	0.69 J	0.5 U	0.5 U	0.5 U	0.5 U	0.5 U	0.5 U	0.5 U	0.5 U
O-XYLENE	0.5 U	0.5 U	0.5 U	0.5 U	0.5 U	0.5 U	0.5 U	0.5 U	0.5 U	0.5 U	0.5 U	0.5 U
STYRENE	0.5 U	0.5 U	0.5 U	0.5 U	0.5 U	0.5 U	0.5 U	0.5 U	0.5 U	0.5 U	0.5 U	0.5 U
TETRACHLOROETHENE	100	0.77 J	13.8	20.2	0.67 J	1.1 J	0.5 U	5.6	0.65 J	1.2 J	1.1 J	2.6 J
TOLUENE	0.5 U	0.5 U	0.5 U	0.5 U	0.5 U	0.5 U	0.5 U	0.5 U	0.5 U	0.5 U	0.5 U	0.5 U
TRANS-1,2-DICHLOROETHENE	0.36 J	0.5 U	0.5 U	0.8 J	0.5 U	0.5 U	0.5 U	0.5 U	0.5 U	0.5 U	0.5 U	0.5 U
TRANS-1,3-DICHLOROPROPENE	0.5 U	0.5 U	0.5 U	0.5 U	0.5 U	0.5 U	0.5 U	0.5 U	0.5 U	0.5 U	0.5 U	0.5 U
TRICHLOROETHENE	99.3	2.7 J	46.3	17.4	16.9	5.7	1.4 J	520	510	530	530	46.7
TRICHLOROFLUOROMETHANE	140	0.32 J	2.1 J	0.5 U	0.5 U	0.5 U	0.5 U	0.5 U	0.5 U	0.5 U	0.5 U	0.5 U
VINYL CHLORIDE	0.5 U	0.5 U	0.5 U	0.5 U	0.5 U	0.5 U	0.5 U	0.5 U	0.5 U	0.5 U	0.5 U	0.5 U
METHOD 8270D (UG/L)												
1,4-DIOXANE	5	0.1 U	0.49	0.33	0.31	1.2	0.4	5	0.59	0.51	0.54	2.9
METHOD 8260 SIM (UG/L)												
1,4-DIOXANE	--	--	--	--	--	--	--	--	--	--	--	--
METHOD 522 (UG/L)												
1,4-DIOXANE	--	--	--	--	--	--	--	--	--	--	--	--

J = Estimated value.
 U = Non-detect.

Q3, 2020 (September) Validated Analytical Data
 Navy OU2 Groundwater Sampling
 Naval Weapons Industrial Reserve Plant Bethpage
 Page 2 of 6

LOCATION SAMPLE ID SAMPLE DATE DUPLICATE	RE104D2 RE104D2-20200917 09/17/2020	RE104D3 RE104D3-20200917 09/17/2020	RE105D1 RE105D1-20200915 09/15/2020	RE105D2 RE105D2-20200915 09/15/2020	RE108D1 RE108D1-20200915 09/15/2020	RE108D2 RE108D2-20200915 09/15/2020	RE109D1 RE109D1-20200917 09/17/2020	RE109D2 RE109D2-20200917 09/17/2020	RE109D3 RE109D3-20200917 09/17/2020	RE117D1 RE117D1-20200915 09/15/2020	RE117D2 RE117D2-20200915 09/15/2020	RE120D1 RE120D1-20200916 09/16/2020
VOLATILES (UG/L)												
1,1,1-TRICHLOROETHANE	0.75 U	0.75 U	0.75 U	0.75 U	0.75 U	0.75 U	0.75 U	0.75 U	0.75 U	0.75 U	0.75 U	0.75 U
1,1,2,2-TETRACHLOROETHANE	0.5 U	0.5 U	0.5 U	0.5 U	0.5 U	0.5 U	0.5 U	0.5 U	0.5 U	0.5 U	0.5 U	0.5 U
1,1,2-TRICHLOROETHANE	0.49 J	0.5 U	0.5 U	1.5 J	0.5 U	1.4 J	0.5 U	0.5 U	0.5 U	0.42 J	0.5 U	1.1 J
1,1,2-TRICHLOROTRIFLUOROETHANE	0.5 U	0.5 U	7	23.9	1.7 J	6.4	0.49 J	1.2 J	1.8 J	0.5 U	0.5 U	29.3
1,1-DICHLOROETHANE	2.4 J	0.5 U	0.5 U	0.5 U	0.5 U	3.8 J	0.5 U	0.5 U	0.5 U	0.5 U	0.5 U	2 J
1,1-DICHLOROETHENE	1.9 J	0.5 U	1.3 J	9.2	0.5 U	5.3	0.5 U	0.5 U	0.5 U	0.38 J	0.5 U	16.2
1,2-DICHLOROBENZENE	0.5 U	0.5 U	0.5 U	0.5 U	0.5 U	0.5 U	0.5 U	0.5 U	0.5 U	0.5 U	0.5 U	0.5 U
1,2-DICHLOROETHANE	2.6 J	0.75 U	0.75 U	0.39 J	0.75 U	0.43 J	0.75 U	0.75 U	0.75 U	0.75 U	0.75 U	0.75 U
1,2-DICHLOROPROPANE	0.38 J	0.5 U	0.5 U	0.5 U	0.5 U	0.5 U	0.5 U	0.5 U	0.5 U	0.5 U	0.5 U	0.5 U
1,3-DICHLOROBENZENE	0.5 U	0.5 U	0.5 U	0.5 U	0.5 U	0.5 U	0.5 U	0.5 U	0.5 U	0.5 U	0.5 U	0.5 U
1,4-DICHLOROBENZENE	0.5 U	0.5 U	0.5 U	0.5 U	0.5 U	0.5 U	0.5 U	0.5 U	0.5 U	0.5 U	0.5 U	0.5 U
2-BUTANONE	2.5 U	2.5 U	2.5 U	2.5 U	2.5 U	2.5 U	2.5 U	2.5 U	2.5 U	2.5 U	2.5 U	2.5 U
2-HEXANONE	3.8 U	3.8 U	3.8 U	3.8 U	3.8 U	3.8 U	3.8 U	3.8 U	3.8 U	3.8 U	3.8 U	3.8 U
4-METHYL-2-PENTANONE	2.5 U	2.5 U	2.5 U	2.5 U	2.5 U	2.5 U	2.5 U	2.5 U	2.5 U	2.5 U	2.5 U	2.5 U
ACETONE	25 U	25 U	3.5 J	2.5 U	2.5 U	2.5 U	25 U	2.5 U	2.5 U	4.2 J	4.6 J	2.5 U
BENZENE	0.5 U	0.5 U	0.5 U	0.5 U	0.5 U	0.5 U	0.5 U	0.5 U	0.5 U	0.5 U	0.5 U	0.5 U
BROMODICHLOROMETHANE	0.5 U	0.5 U	0.5 U	0.5 U	0.5 U	0.5 U	0.5 U	0.5 U	0.5 U	0.5 U	0.5 U	0.5 U
BROMOFORM	0.5 U	0.5 U	0.5 U	0.5 U	0.5 U	0.5 U	0.5 U	0.5 U	0.5 U	0.5 U	0.5 U	0.5 U
BROMOMETHANE	3.8 U	3.8 U	3.8 U	3.8 U	3.8 U	3.8 U	3.8 U	3.8 U	3.8 U	3.8 U	3.8 U	3.8 U
CARBON DISULFIDE	0.5 U	0.5 U	0.5 U	0.5 U	0.5 U	0.5 U	0.5 U	0.5 U	0.5 U	0.5 U	0.5 U	0.5 U
CARBON TETRACHLORIDE	0.5 U	0.5 U	0.5 U	2.9 J	0.5 U	1.4 J	0.5 U	0.5 U	0.5 U	0.93 J	0.5 U	0.69 J
CHLOROBENZENE	0.5 U	0.5 U	0.5 U	0.5 U	0.5 U	0.5 U	0.5 U	0.5 U	0.5 U	0.5 U	0.5 U	0.5 U
CHLORODIBROMOMETHANE	0.5 U	0.5 U	0.5 U	0.5 U	0.5 U	0.5 U	0.5 U	0.5 U	0.5 U	0.5 U	0.5 U	0.5 U
CHLOROETHANE	0.5 U	0.5 U	0.5 U	0.5 U	0.5 U	0.5 U	0.5 U	0.5 U	0.5 U	0.5 U	0.5 U	0.5 U
CHLOROFORM	6.1	0.5 U	0.5 U	1.9 J	0.5 U	2.7 J	0.5 U	0.5 U	0.5 U	0.5 U	0.5 U	0.85 J
CHLOROMETHANE	0.5 U	0.61 J	0.53 J	0.37 J	0.5 U	0.5 U	0.5 U	0.5 U	0.5 U	0.47 J	0.36 J	0.62 J
CIS-1,2-DICHLOROETHENE	57.2	0.5 U	1.5 J	4.6 J	0.5 U	6.9	0.5 U	0.5 U	0.5 U	0.67 J	0.5 U	4.1 J
CIS-1,3-DICHLOROPROPENE	0.5 U	0.5 U	0.5 U	0.5 U	0.5 U	0.5 U	0.5 U	0.5 U	0.5 U	0.5 U	0.5 U	0.5 U
ETHYLBENZENE	0.5 U	0.5 U	0.5 U	0.5 U	0.5 U	0.5 U	0.5 U	0.5 U	0.5 U	0.5 U	0.5 U	0.5 U
ISOPROPYLBENZENE	0.5 U	0.5 U	0.5 U	0.5 U	0.5 U	0.5 U	0.5 U	0.5 U	0.5 U	0.5 U	0.5 U	0.5 U
M+P-XYLENES	1 U	1 U	1 U	1 U	1 U	1 U	1 U	1 U	1 U	1 U	1 U	1 U
METHYL CYCLOHEXANE	0.5 U	0.5 U	0.5 U	0.5 U	0.5 U	0.5 U	0.5 U	0.5 U	0.5 U	0.5 U	0.5 U	0.5 U
METHYL TERT-BUTYL ETHER	0.5 U	0.5 U	0.5 U	0.5 U	0.5 U	0.5 U	0.5 U	0.5 U	0.5 U	0.5 U	0.5 U	0.5 U
METHYLENE CHLORIDE	0.5 U	0.5 U	0.5 U	0.5 U	0.5 U	0.5 U	0.5 U	0.5 U	0.5 U	0.5 U	0.5 U	0.5 U
O-XYLENE	0.5 U	0.5 U	0.5 U	0.5 U	0.5 U	0.5 U	0.5 U	0.5 U	0.5 U	0.5 U	0.5 U	0.5 U
STYRENE	0.5 U	0.5 U	0.5 U	0.5 U	0.5 U	0.5 U	0.5 U	0.5 U	0.5 U	0.5 U	0.5 U	0.5 U
TETRACHLOROETHENE	0.36 J	0.5 U	0.5 U	3.8 J	1.3 J	3.1 J	0.75 J	0.57 J	0.75 J	0.5 U	0.5 U	4.9 J
TOLUENE	0.5 U	0.5 U	0.5 U	0.5 U	0.5 U	0.5 U	0.5 U	0.5 U	0.5 U	0.5 U	0.5 U	0.5 U
TRANS-1,2-DICHLOROETHENE	0.5 U	0.5 U	0.5 U	0.5 U	0.5 U	0.5 U	0.5 U	0.5 U	0.5 U	0.5 U	0.5 U	0.5 U
TRANS-1,3-DICHLOROPROPENE	0.5 U	0.5 U	0.5 U	0.5 U	0.5 U	0.5 U	0.5 U	0.5 U	0.5 U	0.5 U	0.5 U	0.5 U
TRICHLOROETHENE	290	0.5 U	71.5	2000	34.4	2600	16.7	30.4	50	74.6	0.5 U	1300
TRICHLOROFLUOROMETHANE	0.5 U	0.5 U	0.5 U	0.5 U	0.5 U	0.5 U	0.5 U	0.5 U	0.5 U	0.5 U	0.5 U	0.37 J
VINYL CHLORIDE	0.5 U	0.5 U	0.5 U	0.5 U	0.5 U	0.5 U	0.5 U	0.5 U	0.5 U	0.5 U	0.5 U	0.5 U
METHOD 8270D (UG/L)												
1,4-DIOXANE	2.3	0.1 U	3.1	4.1	3	2.9	2.2	2.7	2.7	0.14	0.1 U	6.7
METHOD 8260 SIM (UG/L)												
1,4-DIOXANE	--	--	--	--	--	--	--	--	--	--	--	26 J
METHOD 522 (UG/L)												
1,4-DIOXANE	--	--	--	--	--	--	--	--	--	--	--	30 J

J = Estimated value.
 U = Non-detect.

Q3, 2020 (September) Validated Analytical Data
 Navy OU2 Groundwater Sampling
 Naval Weapons Industrial Reserve Plant Bethpage
 Page 3 of 6

LOCATION SAMPLE ID SAMPLE DATE DUPLICATE	RE120D2 RE120D2-20200916 09/16/2020	RE120D3 RE120D3-20200916 09/16/2020	RE122D1 RE122D1-20200921 09/21/2020	RE122D2 RE122D2-20200921 09/21/2020	RE122D3 RE122D3-20200921 09/21/2020	RE123D1 RE123D1-20200922 09/22/2020	RE123D2 RE123D2-20200922 09/22/2020	RE123D2 RE123D2-20200922-D RE123D2-20200922	RE123D3 RE123D3-20200922 09/22/2020	RE125D1 RE125D1-20200916 09/16/2020	RE125D2 RE125D2-20200916 09/16/2020	RE125D3 RE125D3-20200916 09/16/2020
VOLATILES (UG/L)												
1,1,1-TRICHLOROETHANE	0.75 U	0.75 U	0.75 U	37.5 U	0.75 U	0.75 U	0.75 U	0.75 U	0.75 U	0.75 U	0.75 U	0.75 U
1,1,2,2-TETRACHLOROETHANE	0.5 U	0.5 U	0.5 U	25 U	0.5 U	0.5 U	0.5 U	0.5 U	0.5 U	0.5 U	0.5 U	0.5 U
1,1,2-TRICHLOROETHANE	0.42 J	0.5 U	0.5 U	25 U	0.5 U	0.5 U	0.5 U	0.5 U	0.5 U	0.5 U	0.56 J	0.5 U
1,1,2-TRICHLOROTRIFLUOROETHANE	30.7	5.5	2.7 J	25 U	0.5 U	0.5 U	0.5 U	0.5 U	0.5 U	10	22.1	80.3
1,1-DICHLOROETHANE	0.5 U	0.5 U	0.5 U	25 U	0.5 U	0.5 U	0.5 U	0.5 U	0.5 U	0.5 U	0.5 U	0.5 U
1,1-DICHLOROETHENE	2.6 J	0.97 J	0.62 J	25 U	0.5 U	0.5 U	0.5 U	0.5 U	0.5 U	2.2 J	6.6	1 J
1,2-DICHLOROBENZENE	0.5 U	0.5 U	0.5 U	25 U	0.5 U	0.5 U	0.5 U	0.5 U	0.5 U	0.5 U	0.5 U	0.5 U
1,2-DICHLOROETHANE	0.75 U	0.75 U	0.75 U	37.5 U	0.75 U	0.75 U	0.75 U	0.75 U	0.75 U	0.75 U	0.75 U	0.75 U
1,2-DICHLOROPROPANE	0.5 U	0.5 U	0.5 U	25 U	0.5 U	0.5 U	0.5 U	0.5 U	0.5 U	0.5 U	0.5 U	0.5 U
1,3-DICHLOROBENZENE	0.5 U	0.5 U	0.5 U	25 U	0.5 U	0.5 U	0.5 U	0.5 U	0.5 U	0.5 U	0.5 U	0.5 U
1,4-DICHLOROBENZENE	0.5 U	0.5 U	0.5 U	25 U	0.5 U	0.5 U	0.5 U	0.5 U	0.5 U	0.5 U	0.5 U	0.5 U
2-BUTANONE	2.5 U	2.5 U	2.5 U	130 U	2.5 U	2.5 U	2.5 U	2.5 U	2.5 U	2.5 U	2.5 U	2.5 U
2-HEXANONE	3.8 U	3.8 U	3.8 U	190 U	3.8 U	3.8 U	3.8 U	3.8 U	3.8 U	3.8 U	3.8 U	3.8 U
4-METHYL-2-PENTANONE	2.5 U	2.5 U	2.5 U	130 U	2.5 U	2.5 U	2.5 U	2.5 U	2.5 U	2.5 U	2.5 U	2.5 U
ACETONE	2.5 U	2.5 U	25 U	130 U	25 U	25 U	25 U	25 U	25 U	2.5 U	2.5 U	2.5 U
BENZENE	0.5 U	0.5 U	0.5 U	25 U	0.5 U	0.5 U	0.5 U	0.5 U	0.5 U	0.5 U	0.5 U	0.5 U
BROMODICHLOROMETHANE	0.5 U	0.5 U	0.5 U	25 U	0.5 U	0.5 U	0.5 U	0.5 U	0.5 U	0.5 U	0.5 U	0.5 U
BROMOFORM	0.5 U	0.5 U	0.5 U	25 U	0.5 U	0.5 U	0.5 U	0.5 U	0.5 U	0.5 U	0.5 U	0.5 U
BROMOMETHANE	3.8 U	3.8 U	3.8 U	190 U	3.8 U	3.8 U	3.8 U	3.8 U	3.8 U	3.8 U	3.8 U	3.8 U
CARBON DISULFIDE	0.5 U	0.5 U	0.5 U	25 U	0.5 U	0.5 U	0.5 U	0.5 U	0.5 U	0.5 U	0.5 U	0.5 U
CARBON TETRACHLORIDE	0.77 J	0.5 U	0.43 J	25 U	0.5 U	0.5 U	0.5 U	0.5 U	0.5 U	0.5 U	0.7 J	0.41 J
CHLOROBENZENE	0.5 U	0.5 U	0.5 U	25 U	0.5 U	0.5 U	0.5 U	0.5 U	0.5 U	0.5 U	0.5 U	0.5 U
CHLORODIBROMOMETHANE	0.5 U	0.5 U	0.5 U	25 U	0.5 U	0.5 U	0.5 U	0.5 U	0.5 U	0.5 U	0.5 U	0.5 U
CHLOROETHANE	0.5 U	0.5 U	0.5 U	25 U	0.5 U	0.5 U	0.5 U	0.5 U	0.5 U	0.5 U	0.5 U	0.5 U
CHLOROFORM	0.74 J	0.5 U	0.44 J	25 U	0.5 U	0.5 U	0.5 U	0.5 U	0.5 U	0.88 J	0.57 J	0.33 J
CHLOROMETHANE	0.77 J	0.5 U	0.5 U	25 U	0.5 U	0.5 U	0.97 J	1 J	0.5 U	0.5 U	0.5 U	0.82 J
CIS-1,2-DICHLOROETHENE	3.6 J	0.66 J	1.5 J	25 U	0.5 U	0.5 U	0.5 U	0.5 U	0.5 U	4.6 J	5.3	2.2 J
CIS-1,3-DICHLOROPROPENE	0.5 U	0.5 U	0.5 U	25 U	0.5 U	0.5 U	0.5 U	0.5 U	0.5 U	0.5 U	0.5 U	0.5 U
ETHYLBENZENE	0.5 U	0.5 U	0.5 U	25 U	0.5 U	0.5 U	0.5 U	0.5 U	0.5 U	0.5 U	0.5 U	0.5 U
ISOPROPYLBENZENE	0.5 U	0.5 U	0.5 U	25 U	0.5 U	0.5 U	0.5 U	0.5 U	0.5 U	0.5 U	0.5 U	0.5 U
M+P-XYLENES	1 U	1 U	1 U	50 U	1 U	1 U	1 U	1 U	1 U	1 U	1 U	1 U
METHYL CYCLOHEXANE	0.5 U	0.5 U	0.5 U	25 U	0.5 U	0.5 U	0.5 U	0.5 U	0.5 U	0.5 U	0.5 U	0.5 U
METHYL TERT-BUTYL ETHER	0.5 U	0.5 U	0.5 U	25 U	0.5 U	0.5 U	0.5 U	0.5 U	0.5 U	0.64 J	0.5 U	0.5 U
METHYLENE CHLORIDE	0.5 U	0.5 U	0.5 U	25 U	0.5 U	0.5 U	0.5 U	0.92 J	0.5 U	0.5 U	0.5 U	0.5 U
O-XYLENE	0.5 U	0.5 U	0.5 U	25 U	0.5 U	0.5 U	0.5 U	0.5 U	0.5 U	0.5 U	0.5 U	0.5 U
STYRENE	0.5 U	0.5 U	0.5 U	25 U	0.5 U	0.5 U	0.5 U	0.5 U	0.5 U	0.5 U	0.5 U	0.5 U
TETRACHLOROETHENE	6.7	0.8 J	1.8 J	25 U	0.5 U	0.5 U	1.7 J	1.9 J	0.5 U	9.1	5.5	6.8
TOLUENE	0.5 U	0.5 U	0.5 U	25 U	0.5 U	0.5 U	0.5 U	0.5 U	0.5 U	0.5 U	0.5 U	0.5 U
TRANS-1,2-DICHLOROETHENE	0.5 U	0.5 U	0.5 U	25 U	0.5 U	0.5 U	0.5 U	0.5 U	0.5 U	0.5 U	0.5 U	0.5 U
TRANS-1,3-DICHLOROPROPENE	0.5 U	0.5 U	0.5 U	25 U	0.5 U	0.5 U	0.5 U	0.5 U	0.5 U	0.5 U	0.5 U	0.5 U
TRICHLOROETHENE	800	170	400	5400	5 U	10.3	5 U	5 U	5 U	210	340	170
TRICHLOROFLUOROMETHANE	0.5 U	0.5 U	0.5 U	25 U	0.5 U	0.5 U	0.5 U	0.5 U	0.5 U	0.5 U	0.5 U	0.5 U
VINYL CHLORIDE	0.5 U	0.5 U	0.5 U	25 U	0.5 U	0.5 U	0.5 U	0.5 U	0.5 U	0.5 U	0.5 U	0.5 U
METHOD 8270D (UG/L)												
1,4-DIOXANE	4.4	0.81	3.2	4.1	0.1 U	1.6	0.46	0.37	0.1 U	5.7	6.8	2.6
METHOD 8260 SIM (UG/L)												
1,4-DIOXANE	19 J	3.1 J	--	--	--	--	--	--	--	--	--	--
METHOD 522 (UG/L)												
1,4-DIOXANE	21 J	3.2 J	--	--	--	--	--	--	--	--	--	--

J = Estimated value.
 U = Non-detect.

Q3, 2020 (September) Validated Analytical Data
 Navy OU2 Groundwater Sampling
 Naval Weapons Industrial Reserve Plant Bethpage
 Page 4 of 6

LOCATION SAMPLE ID SAMPLE DATE DUPLICATE	RE125D3 RE125D3-20200916-D 09/16/2020 RE125D3-20200916	RE126D1 RE126D1-20200921 09/21/2020	RE126D2 RE126D2-20200921 09/21/2020	RE126D3 RE126D3-20200921 09/21/2020	RE131D1 RE131D1-20200916 09/16/2020	RE131D2 RE131D2-20200916 09/16/2020	RE131D3 RE131D3-20200916 09/16/2020	RE132D1 RE132D1-20200918 09/18/2020	RE132D2 RE132D2-20200918 09/18/2020	RE132D3 RE132D3-20200918 09/18/2020	RE132D4 RE132D4-20200918 09/18/2020	RE132D5 RE132D5-20200918 09/18/2020
VOLATILES (UG/L)												
1,1,1-TRICHLOROETHANE	0.75 U	0.75 U	0.75 U	0.75 U	0.75 U	0.75 U	0.75 U	0.75 U	0.75 U	0.75 U	0.75 U	0.75 U
1,1,2,2-TETRACHLOROETHANE	0.5 U	0.5 U	0.5 U	0.5 U	0.5 U	0.5 U	0.5 U	0.5 U	0.5 U	0.5 U	0.5 U	0.5 U
1,1,2-TRICHLOROETHANE	0.5 U	0.5 U	0.5 U	0.5 U	0.5 U	0.5 U	0.5 U	0.5 U	0.5 U	0.5 U	0.27 J	0.4 J
1,1,2-TRICHLOROTRIFLUOROETHANE	63	0.5 U	0.66 J	0.5 U	4.4 J	280	330	3 J	3 J	4 J	6	8.3
1,1-DICHLOROETHANE	0.5 U	0.5 U	0.5 U	0.5 U	0.5 U	0.5 U	0.5 U	0.5 U	0.5 U	0.5 U	0.5 U	0.5 U
1,1-DICHLOROETHENE	1.1 J	0.5 U	1.5 J	0.5 U	1.1 J	2.9 J	2.8 J	0.74 J	0.5 U	0.64 J	1.1 J	1.6 J
1,2-DICHLOROBENZENE	0.5 U	0.5 U	0.5 U	0.5 U	0.5 U	0.5 U	0.5 U	0.5 U	0.5 U	0.5 U	0.5 U	0.5 U
1,2-DICHLOROETHANE	0.75 U	0.75 U	0.75 U	0.75 U	0.75 U	0.75 U	0.75 U	0.75 U	0.75 U	0.75 U	0.75 U	0.75 U
1,2-DICHLOROPROPANE	0.5 U	0.5 U	0.5 U	0.5 U	0.5 U	0.5 U	0.5 U	0.5 U	0.5 U	0.5 U	0.5 U	0.5 U
1,3-DICHLOROBENZENE	0.5 U	0.5 U	0.5 U	0.5 U	0.5 U	0.5 U	0.5 U	0.5 U	0.5 U	0.5 U	0.5 U	0.5 U
1,4-DICHLOROBENZENE	0.5 U	0.5 U	0.5 U	0.5 U	0.5 U	0.5 U	0.5 U	0.5 U	0.5 U	0.5 U	0.5 U	0.5 U
2-BUTANONE	2.5 U	2.5 U	2.5 U	2.5 U	2.5 U	2.5 U	2.5 U	2.5 U	2.5 U	2.5 U	2.5 U	2.5 U
2-HEXANONE	3.8 U	3.8 U	3.8 U	3.8 U	3.8 U	3.8 U	3.8 U	3.8 U	3.8 U	3.8 U	3.8 U	3.8 U
4-METHYL-2-PENTANONE	2.5 U	2.5 U	2.5 U	2.5 U	2.5 U	2.5 U	2.5 U	2.5 U	2.5 U	2.5 U	2.5 U	2.5 U
ACETONE	2.5 U	2.5 U	25 U	25 U	2.5 U	2.5 U	2.5 U	2.5 U	3.3 J	3.1 J	2.5 U	2.1 J
BENZENE	0.5 U	0.5 U	0.5 U	0.5 U	0.5 U	0.5 U	0.5 U	0.5 U	0.5 U	0.5 U	0.5 U	0.5 U
BROMODICHLOROMETHANE	0.5 U	0.5 U	0.5 U	0.5 U	0.5 U	0.5 U	0.5 U	0.5 U	0.5 U	0.5 U	0.5 U	0.5 U
BROMOFORM	0.5 U	0.5 U	0.5 U	0.5 U	0.5 U	0.5 U	0.5 U	0.5 U	0.5 U	0.5 U	0.5 U	0.5 U
BROMOMETHANE	3.8 U	3.8 U	3.8 U	3.8 U	3.8 U	3.8 U	3.8 U	3.8 U	3.8 U	3.8 U	3.8 U	3.8 U
CARBON DISULFIDE	0.5 U	0.5 U	0.5 U	0.5 U	0.5 U	0.5 U	0.5 U	0.5 U	0.5 U	0.5 U	0.5 U	0.5 U
CARBON TETRACHLORIDE	0.51 J	0.5 U	0.71 J	0.5 U	0.5 U	0.5 U	0.5 U	0.5 U	0.5 U	0.5 U	0.5 U	0.57 J
CHLOROBENZENE	0.5 U	0.5 U	0.5 U	0.5 U	0.5 U	0.5 U	0.5 U	0.5 U	0.5 U	0.5 U	0.5 U	0.5 U
CHLORODIBROMOMETHANE	0.5 U	0.5 U	0.5 U	0.5 U	0.5 U	0.5 U	0.5 U	0.5 U	0.5 U	0.5 U	0.5 U	0.5 U
CHLOROETHANE	0.5 U	0.5 U	0.5 U	0.5 U	0.5 U	0.5 U	0.5 U	0.5 U	0.5 U	0.5 U	0.5 U	0.5 U
CHLOROFORM	0.33 J	0.5 U	0.38 J	0.5 U	1.6 J	0.44 J	0.5 U	1.6 J	0.5 U	0.5 U	0.39 J	0.83 J
CHLOROMETHANE	0.96 J	0.35 J	0.5 U	0.48 J	0.65 J	0.62 J	0.54 J	0.5 U	0.5 U	0.5 U	0.5 U	0.84 J
CIS-1,2-DICHLOROETHENE	1.8 J	0.5 U	1.3 J	0.5 U	4.7 J	5.6	1 J	1.4 J	0.5 U	1 J	2.1 J	1.3 J
CIS-1,3-DICHLOROPROPENE	0.5 U	0.5 U	0.5 U	0.5 U	0.5 U	0.5 U	0.5 U	0.5 U	0.5 U	0.5 U	0.5 U	0.5 U
ETHYLBENZENE	0.5 U	0.5 U	0.5 U	0.5 U	0.5 U	0.5 U	0.5 U	0.5 U	0.5 U	0.5 U	0.5 U	0.5 U
ISOPROPYLBENZENE	0.5 U	0.5 U	0.5 U	0.5 U	0.5 U	0.5 U	0.5 U	0.5 U	0.5 U	0.5 U	0.5 U	0.5 U
M+P-XYLENES	1 U	1 U	1 U	1 U	1 U	1 U	1 U	1 U	1 U	1 U	1 U	1 U
METHYL CYCLOHEXANE	0.5 U	0.5 U	0.5 U	0.5 U	0.5 U	0.5 U	0.5 U	0.5 U	0.5 U	0.5 U	0.5 U	0.5 U
METHYL TERT-BUTYL ETHER	0.5 U	0.5 U	0.5 U	0.5 U	0.78 J	0.5 U	0.5 U	0.56 J	0.5 U	0.5 U	0.5 U	0.5 U
METHYLENE CHLORIDE	0.74 J	0.5 U	0.5 U	0.5 U	0.5 U	0.5 U	0.5 U	0.5 U	0.5 U	0.5 U	0.5 U	0.5 U
O-XYLENE	0.5 U	0.5 U	0.5 U	0.5 U	0.5 U	0.5 U	0.5 U	0.5 U	0.5 U	0.5 U	0.5 U	0.5 U
STYRENE	0.5 U	0.5 U	0.5 U	0.5 U	0.5 U	0.5 U	0.5 U	0.5 U	0.5 U	0.5 U	0.5 U	0.5 U
TETRACHLOROETHENE	5.9	1.1 J	0.83 J	1.4 J	14	15.4	8.2	2.5 J	0.5 U	2.4 J	4.2 J	0.5 U
TOLUENE	0.5 U	0.5 U	0.5 U	0.5 U	0.5 U	0.5 U	0.5 U	0.5 U	0.5 U	0.5 U	0.5 U	0.5 U
TRANS-1,2-DICHLOROETHENE	0.5 U	0.5 U	0.5 U	0.5 U	0.5 U	0.5 U	0.5 U	0.5 U	0.5 U	0.5 U	0.5 U	0.5 U
TRANS-1,3-DICHLOROPROPENE	0.5 U	0.5 U	0.5 U	0.5 U	0.5 U	0.5 U	0.5 U	0.5 U	0.5 U	0.5 U	0.5 U	0.5 U
TRICHLOROETHENE	150	36.8	510	5 U	210	140	23.9	67.4	1.7 J	83.8	200	74.7
TRICHLOROFLUOROMETHANE	0.5 U	0.5 U	0.5 U	0.5 U	0.5 U	0.5 U	0.5 U	0.5 U	0.5 U	0.5 U	0.5 U	0.5 U
VINYL CHLORIDE	0.5 U	0.5 U	0.5 U	0.5 U	0.5 U	0.5 U	0.5 U	0.5 U	0.5 U	0.5 U	0.5 U	0.5 U
METHOD 8270D (UG/L)												
1,4-DIOXANE	2.5	3.1	3.1	0.3	6.2	6.1	1.5	1.7	3.7	3.7	4.8	3
METHOD 8260 SIM (UG/L)												
1,4-DIOXANE	--	--	--	--	--	--	--	--	--	--	--	--
METHOD 522 (UG/L)												
1,4-DIOXANE	--	--	--	--	--	--	--	--	--	--	--	--

J = Estimated value.
 U = Non-detect.

Q3, 2020 (September) Validated Analytical Data
 Navy OU2 Groundwater Sampling
 Naval Weapons Industrial Reserve Plant Bethpage
 Page 5 of 6

LOCATION SAMPLE ID SAMPLE DATE DUPLICATE	RE132D6 RE132D6-20200918 09/18/2020	RE132D7 RE132D7-20200918 09/18/2020	RE132D7 RE132D7-20200918-D 09/18/2020 RE132D7-20200918	RE134D1 RE134D1-20200915 09/15/2020	RE134D2 RE134D2-20200915 09/15/2020	RE134D3 RE134D3-20200915 09/15/2020	RE134D4 RE134D4-20200915 09/15/2020	RE135D1 RE135D1-20200917 09/17/2020	RE135D2 RE135D2-20200917 09/17/2020	RE135D3 RE135D3-20200917 09/17/2020	RE135D3 RE135D3-20200917-D 09/17/2020 RE135D3-20200917	RE139D1 RE139D1-20200915 09/15/2020
VOLATILES (UG/L)												
1,1,1-TRICHLOROETHANE	15 U	7.5 U	15 U	0.75 U	0.75 U	0.75 U	0.75 U	0.75 U	0.75 U	0.75 U	0.75 U	0.75 U
1,1,2,2-TETRACHLOROETHANE	10 U	5 U	10 U	0.5 U	0.5 U	0.5 U	0.5 U	0.5 U	0.5 U	0.5 U	0.5 U	0.5 U
1,1,2-TRICHLOROETHANE	10 U	5 U	10 U	0.5 U	0.5 U	0.5 U	0.5 U	0.5 U	0.5 U	0.5 U	0.5 U	0.97 J
1,1,2-TRICHLOROTRIFLUOROETHANE	35.8 J	18.5 J	19.6 J	0.5 U	24	630	290	0.5 U	0.5 U	6.4	5.2	4.4 J
1,1-DICHLOROETHANE	10 U	5 U	10 U	0.5 U	0.5 U	0.5 U	0.5 U	0.5 U	0.5 U	0.5 U	0.5 U	0.5 U
1,1-DICHLOROETHENE	12.2 J	5 U	10 U	0.5 U	0.5 U	4.2 J	1.8 J	0.5 U	0.5 U	0.65 J	0.5 U	3 J
1,2-DICHLOROBENZENE	10 U	5 U	10 U	0.5 U	0.5 U	0.5 U	0.5 U	0.5 U	0.5 U	0.5 U	0.5 U	0.5 U
1,2-DICHLOROETHANE	15 U	7.5 U	15 U	0.75 U	0.75 U	0.75 U	0.75 U	0.75 U	0.75 U	0.75 U	0.75 U	0.75 U
1,2-DICHLOROPROPANE	10 U	5 U	10 U	0.5 U	0.5 U	0.75 J	0.5 U	0.5 U	2.1 J	3.6 J	2.8 J	0.5 U
1,3-DICHLOROBENZENE	10 U	5 U	10 U	0.5 U	0.5 U	0.5 U	0.5 U	0.5 U	0.5 U	0.5 U	0.5 U	0.5 U
1,4-DICHLOROBENZENE	10 U	5 U	10 U	0.5 U	0.5 U	0.5 U	0.5 U	0.5 U	0.5 U	0.5 U	0.5 U	0.5 U
2-BUTANONE	50 U	25 U	50 U	2.5 U	2.5 U	2.5 U	2.5 U	2.5 U	2.5 U	2.5 U	2.5 U	2.5 U
2-HEXANONE	75 U	37.5 U	75 U	3.8 U	3.8 U	3.8 U	3.8 U	3.8 U	3.8 U	3.8 U	3.8 U	3.8 U
4-METHYL-2-PENTANONE	50 U	25 U	50 U	2.5 U	2.5 U	2.5 U	2.5 U	2.5 U	2.5 U	2.5 U	2.5 U	2.5 U
ACETONE	50 U	25 U	50 U	2.5 U	2.5 U	2.5 U	2.5 U	25 U	25 U	2.5 U	2.5 U	2.5 U
BENZENE	10 U	5 U	10 U	0.5 U	0.5 U	0.5 U	0.5 U	0.5 U	0.5 U	0.5 U	0.5 U	0.5 U
BROMODICHLOROMETHANE	10 U	5 U	10 U	0.5 U	0.5 U	0.5 U	0.5 U	0.5 U	0.5 U	0.5 U	0.5 U	0.5 U
BROMOFORM	10 U	5 U	10 U	0.5 U	0.5 U	0.5 U	0.5 U	0.5 U	0.5 U	0.5 U	0.5 U	0.5 U
BROMOMETHANE	75 U	37.5 U	75 U	3.8 U	3.8 U	3.8 U	3.8 U	3.8 U	3.8 U	3.8 U	3.8 U	3.8 U
CARBON DISULFIDE	10 U	5 U	10 U	0.5 U	0.5 U	0.5 U	0.5 U	0.5 U	0.5 U	0.5 U	0.5 U	0.5 U
CARBON TETRACHLORIDE	10 U	5 U	10 U	0.5 U	0.5 U	0.5 U	0.5 U	0.5 U	0.5 U	0.5 U	0.5 U	1.1 J
CHLOROBENZENE	10 U	5 U	10 U	0.5 U	0.5 U	0.5 U	0.5 U	0.5 U	0.5 U	0.5 U	0.5 U	0.5 U
CHLORODIBROMOMETHANE	10 U	5 U	10 U	0.5 U	0.5 U	0.5 U	0.5 U	0.5 U	0.5 U	0.5 U	0.5 U	0.5 U
CHLOROETHANE	10 U	5 U	10 U	0.5 U	0.5 U	0.5 U	0.5 U	0.5 U	0.5 U	0.5 U	0.5 U	0.5 U
CHLOROFORM	10 U	5 U	10 U	0.3 J	0.5 U	0.5 U	0.5 U	1.6 J	0.5 U	0.5 U	0.5 U	0.78 J
CHLOROMETHANE	10 U	5 U	10 U	0.5 U	0.63 J	0.56 J	0.5 U	0.55 J	0.94 J	0.5 U	0.5 U	0.5 U
CIS-1,2-DICHLOROETHENE	10 U	5 U	10 U	0.5 U	2.4 J	4.2 J	1.2 J	0.5 U	0.5 U	4.5 J	3.7 J	1.5 J
CIS-1,3-DICHLOROPROPENE	10 U	5 U	10 U	0.5 U	0.5 U	0.5 U	0.5 U	0.5 U	0.5 U	0.5 U	0.5 U	0.5 U
ETHYLBENZENE	10 U	5 U	10 U	0.5 U	0.5 U	0.5 U	0.5 U	0.5 U	0.5 U	0.5 U	0.5 U	0.5 U
ISOPROPYLBENZENE	10 U	5 U	10 U	0.5 U	0.5 U	0.5 U	0.5 U	0.5 U	0.5 U	0.5 U	0.5 U	0.5 U
M+P-XYLENES	20 U	10 U	20 U	1 U	1 U	1 U	1 U	1 U	1 U	1 U	1 U	1 U
METHYL CYCLOHEXANE	10 U	5 U	10 U	0.5 U	0.5 U	0.5 U	0.5 U	0.5 U	0.5 U	0.5 U	0.5 U	0.5 U
METHYL TERT-BUTYL ETHER	10 U	5 U	10 U	0.5 U	0.5 U	0.5 U	0.5 U	0.5 U	0.5 U	0.5 U	0.5 U	0.5 U
METHYLENE CHLORIDE	10 U	5 U	10 U	0.5 U	0.5 U	0.5 U	0.5 U	0.5 U	0.5 U	0.5 U	0.5 U	0.5 U
O-XYLENE	10 U	5 U	10 U	0.5 U	0.5 U	0.5 U	0.5 U	0.5 U	0.5 U	0.5 U	0.5 U	0.5 U
STYRENE	10 U	5 U	10 U	0.5 U	0.5 U	0.5 U	0.5 U	0.5 U	0.5 U	0.5 U	0.5 U	0.5 U
TETRACHLOROETHENE	10 U	5 U	10 U	0.97 J	15.5	70.7	13.2	0.5 U	0.5 U	16.4	14.2	0.5 U
TOLUENE	10 U	5 U	10 U	0.22 J	0.5 U	0.5 U	0.42 J	0.5 U	6 U	0.5 U	0.5 U	0.5 U
TRANS-1,2-DICHLOROETHENE	10 U	5 U	10 U	0.5 U	0.5 U	0.5 U	0.5 U	0.5 U	0.5 U	0.5 U	0.5 U	0.5 U
TRANS-1,3-DICHLOROPROPENE	10 U	5 U	10 U	0.5 U	0.5 U	0.5 U	0.5 U	0.5 U	0.5 U	0.5 U	0.5 U	0.5 U
TRICHLOROETHENE	1600	820	870	6.6	130	190	30.3	1.7 J	0.88 J	18.3	14.7	150
TRICHLOROFLUOROMETHANE	10 U	5 U	10 U	0.5 U	0.5 U	0.5 U	0.5 U	0.5 U	0.5 U	0.5 U	0.5 U	0.5 U
VINYL CHLORIDE	10 U	5 U	10 U	0.5 U	0.5 U	0.5 U	0.5 U	0.5 U	0.5 U	0.5 U	0.5 U	0.5 U
METHOD 8270D (UG/L)												
1,4-DIOXANE	3.1	1.2	1.2	0.66	6.1	5.9	1.7	0.24	0.11	0.16	0.18	1.1 J
METHOD 8260 SIM (UG/L)												
1,4-DIOXANE	--	--	--	--	--	--	--	--	--	--	--	--
METHOD 522 (UG/L)												
1,4-DIOXANE	--	--	--	--	--	--	--	--	--	--	--	--

J = Estimated value.
 U = Non-detect.

Q3, 2020 (September) Validated Analytical Data
 Navy OU2 Groundwater Sampling
 Naval Weapons Industrial Reserve Plant Bethpage
 Page 6 of 6

LOCATION SAMPLE ID SAMPLE DATE DUPLICATE	RE139D1 RE139D1-20200915-D 09/15/2020 RE139D1-20200915	RE139D2 RE139D2-20200915 09/15/2020	TT101D TT101D-20200922 09/22/2020	TT101D1 TT101D1-20200922 09/22/2020	TT101D2 TT101D2-20200922 09/22/2020	TT180D TT180D-20200921 09/21/2020	TT180D1 TT180D1-20200921 09/21/2020	TT180D2 TT180D2-20200921 09/21/2020
VOLATILES (UG/L)								
1,1,1-TRICHLOROETHANE	0.75 U	0.75 U	0.75 U	0.75 U	15 U	0.75 U	0.75 U	2 J
1,1,2,2-TETRACHLOROETHANE	0.5 U	0.5 U	0.5 U	0.5 U	10 U	0.5 U	0.5 U	0.5 U
1,1,2-TRICHLOROETHANE	0.93 J	0.69 J	0.5 U	0.63 J	10 U	0.5 U	1.4 J	1 J
1,1,2-TRICHLOROTRIFLUOROETHANE	4.9 J	1.9 J	17.5	26	38.3 J	0.5 U	4 J	29.7
1,1-DICHLOROETHANE	0.5 U	0.5 U	0.5 U	1.5 J	10 U	0.64 J	0.5 U	1.8 J
1,1-DICHLOROETHENE	3.3 J	2.3 J	3 J	9.1	6.4 J	0.5 U	2.4 J	17.7
1,2-DICHLOROBENZENE	0.5 U	0.5 U	0.5 U	0.5 U	10 U	0.5 U	0.5 U	0.5 U
1,2-DICHLOROETHANE	0.75 U	0.75 U	0.75 U	0.75 U	15 U	0.75 U	0.75 U	0.75 U
1,2-DICHLOROPROPANE	0.5 U	0.5 U	0.5 U	0.5 U	10 U	0.5 U	0.5 U	0.5 U
1,3-DICHLOROBENZENE	0.5 U	0.5 U	0.5 U	0.5 U	10 U	0.5 U	0.5 U	0.5 U
1,4-DICHLOROBENZENE	0.5 U	0.5 U	0.5 U	0.5 U	10 U	0.5 U	0.5 U	0.5 U
2-BUTANONE	2.5 U	2.5 U	2.5 U	2.5 U	50 U	2.5 U	2.5 U	2.5 U
2-HEXANONE	3.8 U	3.8 U	3.8 U	3.8 U	75 U	3.8 U	3.8 U	3.8 U
4-METHYL-2-PENTANONE	2.5 U	2.5 U	2.5 U	2.5 U	50 U	2.5 U	2.5 U	2.5 U
ACETONE	2.5 U	2.8 J	2.5 U	25 U	50 U	2.5 U	4.1 J	2.5 U
BENZENE	0.5 U	0.5 U	0.5 U	0.5 U	10 U	0.5 U	0.5 U	0.5 U
BROMODICHLOROMETHANE	0.5 U	0.5 U	0.5 U	0.5 U	10 U	0.5 U	0.5 U	0.5 U
BROMOFORM	0.5 U	0.5 U	0.5 U	0.5 U	10 U	0.5 U	0.5 U	0.5 U
BROMOMETHANE	3.8 U	3.8 U	3.8 U	3.8 U	75 U	3.8 U	3.8 U	3.8 U
CARBON DISULFIDE	0.5 U	0.5 U	0.5 U	0.5 U	10 U	0.5 U	0.5 U	0.5 U
CARBON TETRACHLORIDE	1.2 J	1.6 J	0.5 U	1.7 J	10 U	0.5 U	0.5 U	1.9 J
CHLOROBENZENE	0.5 U	0.5 U	0.5 U	0.5 U	10 U	0.5 U	0.5 U	0.5 U
CHLORODIBROMOMETHANE	0.5 U	0.5 U	0.5 U	0.5 U	10 U	0.5 U	0.5 U	0.5 U
CHLOROETHANE	0.5 U	0.5 U	0.5 U	0.5 U	10 U	0.5 U	0.5 U	0.5 U
CHLOROFORM	0.79 J	0.52 J	0.6 J	0.96 J	10 U	0.5 U	1.5 J	0.84 J
CHLOROMETHANE	0.5 U	0.5 U	0.5 U	0.51 J	10 U	0.5 U	0.66 J	0.5 U
CIS-1,2-DICHLOROETHENE	1.7 J	1.8 J	3.7 J	2.3 J	10 U	0.5 U	1.8 J	2.4 J
CIS-1,3-DICHLOROPROPENE	0.5 U	0.5 U	0.5 U	0.5 U	10 U	0.5 U	0.5 U	0.5 U
ETHYLBENZENE	0.5 U	0.5 U	0.5 U	0.5 U	10 U	0.5 U	0.5 U	0.5 U
ISOPROPYLBENZENE	0.5 U	0.5 U	0.5 U	0.5 U	10 U	0.5 U	0.5 U	0.5 U
M+P-XYLENES	1 U	1 U	1 U	1 U	20 U	1 U	1 U	1 U
METHYL CYCLOHEXANE	0.5 U	0.5 U	0.5 U	0.5 U	10 U	0.5 U	0.5 U	0.5 U
METHYL TERT-BUTYL ETHER	0.5 U	0.5 U	0.5 U	0.5 U	10 U	0.5 U	0.5 U	0.5 U
METHYLENE CHLORIDE	0.5 U	0.5 U	0.5 U	0.5 U	10 U	0.5 U	0.5 U	0.5 U
O-XYLENE	0.5 U	0.5 U	0.5 U	0.5 U	10 U	0.5 U	0.5 U	0.5 U
STYRENE	0.5 U	0.5 U	0.5 U	0.5 U	10 U	0.5 U	0.5 U	0.5 U
TETRACHLOROETHENE	0.5 U	0.5 U	0.27 J	0.38 J	10 U	0.5 U	0.5 U	0.38 J
TOLUENE	0.5 U	0.5 U	0.5 U	0.5 U	10 U	0.5 U	0.5 U	0.5 U
TRANS-1,2-DICHLOROETHENE	0.5 U	0.5 U	0.5 U	0.5 U	10 U	0.5 U	0.5 U	0.5 U
TRANS-1,3-DICHLOROPROPENE	0.5 U	0.5 U	0.5 U	0.5 U	10 U	0.5 U	0.5 U	0.5 U
TRICHLOROETHENE	140	160	98.9	280	1600	2.2 J	220	230
TRICHLOROFLUOROMETHANE	0.5 U	0.5 U	0.5 U	0.33 J	10 U	0.5 U	0.5 U	0.54 J
VINYL CHLORIDE	0.5 U	0.5 U	0.5 U	0.5 U	10 U	0.5 U	0.5 U	0.5 U
METHOD 8270D (UG/L)								
1,4-DIOXANE	0.19 J	0.73	4.7	4	2.4	0.15	2.6	3.7
METHOD 8260 SIM (UG/L)								
1,4-DIOXANE	--	--	--	--	--	--	--	--
METHOD 522 (UG/L)								
1,4-DIOXANE	--	--	--	--	--	--	--	--

J = Estimated value.
 U = Non-detect.