

**From:** [Wu, Ernie](#)  
**To:** [Pelton, Jason M \(DEC\)](#); [Granzen, Kristin E \(DEC\)](#); [Travis, Matthew E \(DEC\)](#); [Sullivan, Jim \(HEALTH\)](#); [Putnam, Robin \(NASSAU\)](#); [Azzam, Nidal](#); [rlenz@oysterbay-ny.gov](mailto:rlenz@oysterbay-ny.gov); [Sokolowski, Scott C CTV USN NAVFAC MIDLANT NOR \(USA\)](#); [Brayack, David](#); [Francisco, Ben](#); [Felton, Melissa](#); [Varricchio, Vin](#)  
**Subject:** Q4, 2021 (Dec) Validated Data, OU2 Navy groundwater sampling  
**Date:** Wednesday, March 30, 2022 3:06:34 PM  
**Attachments:** [OU2 Navy MWs DV Table Dec2021.pdf](#)  
[Figure - OU2 Navy Sampled Well 2021 Q4.pdf](#)

---

**ATTENTION: This email came from an external source. Do not open attachments or click on links from unknown senders or unexpected emails.**

All:

As per discussions between the Navy and NYSDEC, NYSDEC requested that the Navy submit the validated data as soon as the information is available. Please find attached, a pdf table of the Q4, 2021 (Dec) OU2 groundwater sampling data. The data includes VOCs and 1,4-dioxane results. A figure has also been included presenting the location of groundwater monitoring and recovery wells sampled.

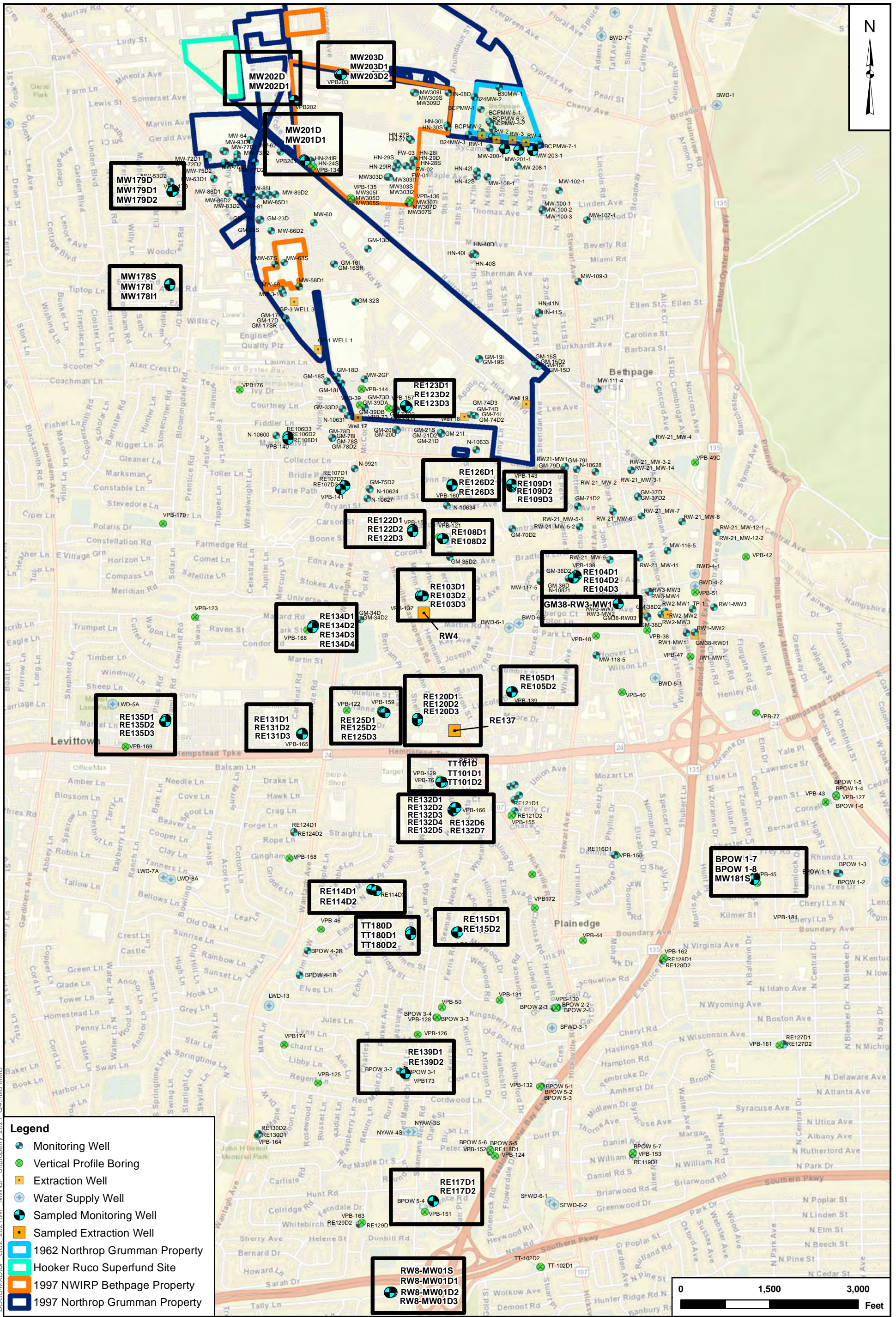
Thanks,  
Ernie

**Ernie Wu** | Project Manager | Environmental Scientist  
Main: 757.461.3768 | Direct: 757.466.4901 | Fax: 757.461.4148  
[ernie.wu@tetrattech.com](mailto:ernie.wu@tetrattech.com)

Tetra Tech, Inc | Norfolk Office  
Twin Oaks I, Suite 102, 5700 Lake Wright Drive | Norfolk, VA 23502 | [www.tetrattech.com](http://www.tetrattech.com)

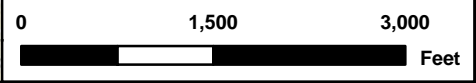
PLEASE NOTE: This message, including any attachments, may include privileged, confidential and/or inside information. Any distribution or use of this communication by anyone other than the intended recipient is strictly prohibited and may be unlawful. If you are not the intended recipient, please notify the sender by replying to this message and then delete it from your system.





NOR-PIGIS\_files\Bethpage\MAP.DOC\SMXD\BEP\_OU2\_2021\WP\_MW\BEP\_ownership\_2021\_04.mxd\MCC

- Legend**
- Monitoring Well
  - Vertical Profile Boring
  - Extraction Well
  - Water Supply Well
  - Sampled Monitoring Well
  - Sampled Extraction Well
  - 1962 Northrop Grumman Property
  - Hooker Ruco Superfund Site
  - 1997 NWIRP Bethpage Property
  - 1997 Northrop Grumman Property



**LOCATION MAP OF WELLS  
OU2 GROUNDWATER SAMPLING - DECEMBER 2021 EVENT  
NAVAL WEAPONS INDUSTRIAL RESERVE PLANT  
BETHPAGE, NEW YORK**

CTO N62470-16-D-9008 WE13	
DRAWN BY MAS	DATE 03/29/22
CHECKED BY EW	DATE 03/29/22
FIGURE NUMBER <b>2</b>	



Q4, 2021 (December) Validated Analytical Data  
Navy OU2 Groundwater Sampling, NWIRP Bethpage  
Page 1 of 13

LOCATION SAMPLE ID SAMPLE DATE	BPOW1-7 BPOW1-7-20211201 12/01/2021	BPOW1-8 BPOW1-8-20211201 12/01/2021	BPS1-TT-MW201D MW201D-20211205 12/05/2021	BPS1-TT-MW201D MW201D-20211205-D 12/05/2021	BPS1-TT-MW201D1 MW201D1-20211205 12/05/2021	BPS1-TT-MW202D MW202D-20211204 12/04/2021	BPS1-TT-MW202D1 MW202D1-20211204 12/04/2021
<b>VOLATILES (UG/L)</b>							
1,1,1-TRICHLOROETHANE	0.5 U	0.5 U	3.8	3.6	0.5 U	0.5 U	0.5 U
1,1,2,2-TETRACHLOROETHANE	0.75 U	0.75 U	0.75 U	0.75 U	0.75 U	0.75 U	0.75 U
1,1,2-TRICHLOROETHANE	0.5 U	0.5 U	0.5 U	0.5 U	0.5 U	0.5 U	0.5 U
1,1,2-TRICHLOROTRIFLUOROETHANE	0.5 U	0.5 U	2	1.9	0.5 U	0.5 U	0.5 U
1,1-DICHLOROETHANE	0.5 U	0.5 U	2.7	2.7	0.5 U	0.83 J	0.5 U
1,1-DICHLOROETHENE	0.75 U	0.75 U	31.9	30.8	0.75 U	0.56 J	0.75 U
1,2-DICHLOROBENZENE	0.5 U	0.5 U	0.5 U	0.5 U	0.5 U	0.5 U	0.5 U
1,2-DICHLOROETHANE	0.5 U	0.5 U	0.5 U	0.5 U	0.5 U	0.5 U	0.5 U
1,2-DICHLOROPROPANE	0.5 U	0.5 U	0.5 U	0.5 U	0.5 U	0.5 U	0.5 U
1,3-DICHLOROBENZENE	0.5 U	0.5 U	0.5 U	0.5 U	0.5 U	0.5 U	0.5 U
1,4-DICHLOROBENZENE	0.5 U	0.5 U	0.5 U	0.5 U	0.5 U	0.5 U	0.5 U
2-BUTANONE	2.5 U	2.5 U	2.5 U	2.5 U	2.5 U	2.5 U	2.5 U
2-HEXANONE	2.5 U	2.5 U	2.5 U	2.5 U	2.5 U	2.5 U	2.5 U
4-METHYL-2-PENTANONE	2.5 U	2.5 U	2.5 U	2.5 U	2.5 U	2.5 U	2.5 U
ACETONE	5 U	5 U	3.8 U	3.8 U	3.8 U	5 U	3.8 UJ
BENZENE	0.5 U	0.5 U	0.5 U	0.5 U	0.5 U	0.5 U	0.5 U
BROMODICHLOROMETHANE	0.25 U	0.25 U	0.25 U	0.25 U	0.25 U	0.25 U	0.25 U
BROMOFORM	0.5 U	0.5 U	0.5 U	0.5 U	0.5 U	0.5 U	0.5 U
BROMOMETHANE	2.5 U	2.5 U	2.5 U	2.5 U	2.5 U	2.5 U	2.5 U
CARBON DISULFIDE	0.75 U	0.75 U	0.75 U	0.75 U	0.75 U	0.75 U	0.75 U
CARBON TETRACHLORIDE	0.75 U	0.75 U	0.75 U	0.75 U	0.75 U	0.75 U	0.75 U
CHLOROBENZENE	0.5 U	0.5 U	0.5 U	0.5 U	0.5 U	0.5 U	0.5 U
CHLORODIBROMOMETHANE	0.5 U	0.5 U	0.5 U	0.5 U	0.5 U	0.5 U	0.5 U
CHLOROETHANE	0.75 U	0.75 U	0.75 U	0.75 U	0.75 U	0.75 U	0.75 U
CHLOROFORM	0.75 U	0.75 U	3.2	3.1	0.75 U	0.75 U	0.75 U
CHLOROMETHANE	0.75 U	0.75 U	0.75 U	0.75 U	0.75 U	0.75 U	0.75 U
CIS-1,2-DICHLOROETHENE	0.75 U	0.75 U	1.8	1.8	0.75 U	3.4	0.75 U
CIS-1,3-DICHLOROPROPENE	0.5 U	0.5 U	0.5 U	0.5 U	0.5 U	0.5 U	0.5 U
ETHYLBENZENE	0.5 U	0.5 U	0.5 U	0.5 U	0.5 U	0.5 U	0.5 U
ISOPROPYLBENZENE	0.5 U	0.5 U	0.5 U	0.5 U	0.5 U	0.5 U	0.5 U
M+P-XYLENES	1 U	1 U	1 U	1 U	1 U	1 U	1 U
METHYL CYCLOHEXANE	0.5 U	0.5 U	0.5 U	0.5 U	0.5 U	0.5 U	0.5 U
METHYL TERT-BUTYL ETHER	0.5 U	0.5 U	0.5 U	0.5 U	0.5 U	0.5 J	0.5 U
METHYLENE CHLORIDE	0.5 U	0.5 U	0.5 U	0.5 U	0.5 U	0.5 U	0.5 U
O-XYLENE	0.5 U	0.5 U	0.5 U	0.5 U	0.5 U	0.5 U	0.5 U
STYRENE	0.5 U	0.5 U	0.5 U	0.5 U	0.5 U	0.5 U	0.5 U
TETRACHLOROETHENE	0.5 U	0.5 U	48.5	44.8	0.37 J	5.1	0.29 J
TOLUENE	0.5 U	0.5 U	0.5 U	0.5 U	0.5 U	0.5 U	0.5 U
TRANS-1,2-DICHLOROETHENE	0.5 U	0.5 U	0.5 U	0.5 U	0.5 U	0.5 U	0.5 U
TRANS-1,3-DICHLOROPROPENE	0.5 U	0.5 U	0.5 U	0.5 U	0.5 U	0.5 U	0.5 U
TRICHLOROETHENE	1 U	1.4	59.9	56.6	1	16.2	1 U
TRICHLOROFLUOROMETHANE	0.5 U	0.5 U	110	100	0.5 U	1.5	0.5 U
VINYL CHLORIDE	0.5 U	0.5 U	0.5 U	0.5 U	0.5 U	0.5 U	0.5 U
<b>METHOD 8270D (UG/L)</b>							
1,4-DIOXANE	0.2 U	0.21 U	5.8	5.5	0.2 U	0.64	0.2 U
<b>METHOD 8260 SIM (UG/L)</b>							
1,4-DIOXANE	--	--	--	--	--	--	--
<b>METHOD 522 (UG/L)</b>							
1,4-DIOXANE	--	--	--	--	--	--	--

UG/L - micrograms per liter  
J - estimated value  
U - non-detect  
UJ - non-detect

Q4, 2021 (December) Validated Analytical Data  
Navy OU2 Groundwater Sampling, NWIRP Bethpage  
Page 2 of 13

LOCATION SAMPLE ID SAMPLE DATE	BPS1-TT-MW203D MW203D-20211205 12/05/2021	BPS1-TT-MW203D1 MW203D1-20211205 12/05/2021	BPS1-TT-MW203D2 MW203D2-20211205 12/05/2021	BP-TT-MW178I MW178I-20211206 12/06/2021	BP-TT-MW178I1 MW178I1-20211206 12/06/2021	BP-TT-MW178S MW178S-20211206 12/06/2021	BP-TT-MW179D MW179D-20211206 12/06/2021
<b>VOLATILES (UG/L)</b>							
1,1,1-TRICHLOROETHANE	0.5 U	0.5 U	0.5 U	0.5 U	0.5 U	0.5 U	0.5 U
1,1,2,2-TETRACHLOROETHANE	0.75 U	0.75 U	0.75 U	0.75 U	0.75 U	0.75 U	0.75 U
1,1,2-TRICHLOROETHANE	0.5 U	0.5 U	0.5 U	0.5 U	0.43 J	0.5 U	0.5 U
1,1,2-TRICHLOROTRIFLUOROETHANE	0.5 U	0.5 U	0.5 U	0.5 U	0.5 U	0.5 U	0.5 U
1,1-DICHLOROETHANE	2.4	14.6	1.9	0.5 U	0.98 J	0.5 U	0.5 U
1,1-DICHLOROETHENE	1.4	5.4	0.75 U	0.75 U	2.7	0.75 U	0.75 U
1,2-DICHLOROBENZENE	0.5 U	0.5 U	0.5 U	0.5 U	0.5 U	0.5 U	0.5 U
1,2-DICHLOROETHANE	0.5 U	0.5 U	0.5 U	0.5 U	0.35 J	0.5 U	0.5 U
1,2-DICHLOROPROPANE	0.5 U	0.5 U	0.5 U	0.5 U	21.1	0.5 U	0.5 U
1,3-DICHLOROBENZENE	0.5 U	0.5 U	0.5 U	0.5 U	0.5 U	0.5 U	0.5 U
1,4-DICHLOROBENZENE	0.5 U	0.5 U	0.5 U	0.5 U	0.5 U	0.5 U	0.5 U
2-BUTANONE	2.5 U	2.5 U	2.5 U	2.5 U	2.5 U	2.5 U	2.5 U
2-HEXANONE	2.5 U	2.5 U	2.5 U	2.5 U	2.5 U	2.5 U	2.5 U
4-METHYL-2-PENTANONE	2.5 U	2.5 U	2.5 U	2.5 U	2.5 U	2.5 U	2.5 U
ACETONE	3.8 U	5 U	3.8 U	5 U	3.8 UJ	3.8 UJ	1.9 J
BENZENE	0.5 U	0.5 U	0.5 U	0.5 U	0.5 U	0.5 U	0.5 U
BROMODICHLOROMETHANE	0.25 U	0.25 U	0.25 U	0.25 U	0.25 U	0.25 U	0.25 U
BROMOFORM	0.5 U	0.5 U	0.5 U	0.5 U	0.5 U	0.5 U	0.5 U
BROMOMETHANE	2.5 U	2.5 U	2.5 U	2.5 U	2.5 U	2.5 U	2.5 U
CARBON DISULFIDE	0.75 U	0.75 U	0.75 U	0.75 U	0.75 U	0.75 U	0.75 U
CARBON TETRACHLORIDE	0.75 U	0.75 U	0.75 U	0.75 U	0.75 U	0.75 U	0.75 U
CHLOROBENZENE	0.5 U	0.5 U	0.5 U	0.5 U	0.5 U	0.5 U	0.5 U
CHLORODIBROMOMETHANE	0.5 U	0.5 U	0.5 U	0.5 U	0.5 U	0.5 U	0.5 U
CHLOROETHANE	0.75 U	0.75 U	0.75 U	0.75 U	0.75 U	0.75 U	0.75 U
CHLOROFORM	0.52 J	0.77 J	0.75 U	0.28 J	0.75 U	0.75 U	0.75 U
CHLOROMETHANE	0.75 U	0.75 U	0.75 U	0.75 U	0.75 U	0.75 U	0.75 U
CIS-1,2-DICHLOROETHENE	2.4	0.65 J	0.75 U	0.75 U	39	0.75 U	15.9
CIS-1,3-DICHLOROPROPENE	0.5 U	0.5 U	0.5 U	0.5 U	0.5 U	0.5 U	0.5 U
ETHYLBENZENE	0.5 U	0.5 U	0.5 U	0.5 U	0.5 U	0.5 U	0.5 U
ISOPROPYLBENZENE	0.5 U	0.5 U	0.5 U	0.5 U	0.5 U	0.5 U	0.5 U
M+P-XYLENES	1 U	1 U	1 U	1 U	1 U	1 U	1 U
METHYL CYCLOHEXANE	0.5 U	0.5 U	0.5 U	0.5 U	0.5 U	0.5 U	0.5 U
METHYL TERT-BUTYL ETHER	0.5 U	0.5 U	0.5 U	0.48 J	0.5 U	0.87 J	0.4 J
METHYLENE CHLORIDE	0.5 U	0.5 U	0.5 U	0.5 U	0.5 U	0.5 U	0.5 U
O-XYLENE	0.5 U	0.5 U	0.5 U	0.5 U	0.5 U	0.5 U	0.5 U
STYRENE	0.5 U	0.5 U	0.5 U	0.5 U	0.5 U	0.5 U	0.5 U
TETRACHLOROETHENE	0.49 J	0.7 J	0.5 U	0.29 J	18	0.5 U	9
TOLUENE	0.5 U	0.5 U	0.5 U	0.5 U	0.5 U	0.5 U	0.5 U
TRANS-1,2-DICHLOROETHENE	0.5 U	0.5 U	0.5 U	0.5 U	0.5 U	0.5 U	0.5 U
TRANS-1,3-DICHLOROPROPENE	0.5 U	0.5 U	0.5 U	0.5 U	0.5 U	0.5 U	0.5 U
TRICHLOROETHENE	13.8	5	1 U	1 U	430	1 U	68.2
TRICHLOROFLUOROMETHANE	0.5 U	0.5 U	0.5 U	0.5 U	0.5 U	0.5 U	0.5 U
VINYL CHLORIDE	0.5 U	0.5 U	0.5 U	0.5 U	0.5 U	0.5 U	0.5 U
<b>METHOD 8270D (UG/L)</b>							
1,4-DIOXANE	0.5	2	0.8	0.18 J	1.3	0.3	0.15 J
<b>METHOD 8260 SIM (UG/L)</b>							
1,4-DIOXANE	--	--	--	--	--	--	--
<b>METHOD 522 (UG/L)</b>							
1,4-DIOXANE	--	--	--	--	--	--	--

UG/L - micrograms per liter  
J - estimated value  
U - non-detect  
UJ - non-detect

Q4, 2021 (December) Validated Analytical Data  
Navy OU2 Groundwater Sampling, NWIRP Bethpage  
Page 3 of 13

LOCATION SAMPLE ID SAMPLE DATE	BP-TT-MW179D1 MW179D1-20211206 12/06/2021	BP-TT-MW179D2 MW179D2-20211206 12/06/2021	BP-TT-MW180D TT180D-20211201 12/01/2021	BP-TT-MW180D1 TT180D1-20211201 12/01/2021	BP-TT-MW180D2 TT180D2-20211201 12/01/2021	BP-TT-MW181S MW181S-20211201 12/01/2021	GM38-RW3-MW1 GM38-RW3-MW1-20211202 12/02/2021
<b>VOLATILES (UG/L)</b>							
1,1,1-TRICHLOROETHANE	0.5 U	0.5 U	0.5 U	0.5 U	0.5 U	0.5 U	0.5 U
1,1,2,2-TETRACHLOROETHANE	0.75 U	0.75 U	0.75 U	0.75 U	0.75 U	0.75 U	0.75 U
1,1,2-TRICHLOROETHANE	0.5 U	0.5 U	0.5 U	0.5 U	0.5 U	0.5 U	0.5 U
1,1,2-TRICHLOROTRIFLUOROETHANE	0.5 U	0.5 U	0.38 J	1.6	4.2	0.5 U	0.5 U
1,1-DICHLOROETHANE	0.5 U	0.5 U	0.5 U	0.5 U	2.6	0.5 U	0.5 U
1,1-DICHLOROETHENE	0.75 U	1.9	0.75 U	0.75 U	4.5	0.75 U	0.75 U
1,2-DICHLOROBENZENE	0.5 U	0.5 U	0.5 U	0.5 U	0.5 U	0.5 U	0.5 U
1,2-DICHLOROETHANE	0.5 U	0.5 U	0.5 U	0.5 U	0.5 U	0.5 U	0.5 U
1,2-DICHLOROPROPANE	0.5 U	0.64 J	0.5 U	0.5 U	0.5 U	0.5 U	0.5 U
1,3-DICHLOROBENZENE	0.5 U	0.5 U	0.5 U	0.5 U	0.5 U	0.5 U	0.5 U
1,4-DICHLOROBENZENE	0.5 U	0.5 U	0.5 U	0.5 U	0.5 U	0.5 U	0.5 U
2-BUTANONE	2.5 U	2.5 U	2.5 U	2.5 U	2.5 U	2.5 U	2.5 U
2-HEXANONE	2.5 U	2.5 U	2.5 U	2.5 U	2.5 U	2.5 U	2.5 U
4-METHYL-2-PENTANONE	2.5 U	2.5 U	2.5 U	2.5 U	2.5 U	2.5 U	2.5 U
ACETONE	3.8 U	3.8 UJ	5 U	5 U	5 U	5 U	3.2 J
BENZENE	0.5 U	0.5 U	0.5 U	0.5 U	0.5 U	0.5 U	0.5 U
BROMODICHLOROMETHANE	0.25 U	0.25 U	0.25 U	0.25 U	0.25 U	0.25 U	0.25 U
BROMOFORM	0.5 U	0.5 U	0.5 U	0.5 U	0.5 U	0.5 U	0.5 U
BROMOMETHANE	2.5 U	2.5 U	2.5 U	2.5 U	2.5 U	2.5 U	2.5 U
CARBON DISULFIDE	0.75 U	0.75 U	0.75 U	0.75 U	0.75 U	0.75 U	0.75 U
CARBON TETRACHLORIDE	0.75 U	0.75 U	0.75 U	0.75 U	0.75 U	0.75 U	0.75 U
CHLOROBENZENE	0.5 U	0.5 U	0.5 U	0.5 U	0.5 U	0.5 U	0.5 U
CHLORODIBROMOMETHANE	0.5 U	0.5 U	0.5 U	0.5 U	0.5 U	0.5 U	0.5 U
CHLOROETHANE	0.75 U	0.75 U	0.75 U	0.75 U	0.75 U	0.75 U	0.75 U
CHLOROFORM	0.75 U	0.75 U	0.75 U	0.57 J	1.8	0.75 U	0.75 U
CHLOROMETHANE	0.75 U	0.75 U	0.75 U	0.75 U	0.75 U	0.75 U	0.75 U
CIS-1,2-DICHLOROETHENE	8.6	27.9	0.75 U	0.75 U	3.7	0.96 J	0.75 U
CIS-1,3-DICHLOROPROPENE	0.5 U	0.5 U	0.5 U	0.5 U	0.5 U	0.5 U	0.5 U
ETHYLBENZENE	0.5 U	0.5 U	0.5 U	0.5 U	0.5 U	0.5 U	0.5 U
ISOPROPYLBENZENE	0.5 U	0.5 U	0.5 U	0.5 U	0.5 U	0.5 U	0.5 U
M+P-XYLENES	1 U	1 U	1 U	1 U	1 U	1 U	1 U
METHYL CYCLOHEXANE	0.5 U	0.5 U	0.5 U	0.5 U	0.5 U	0.5 U	0.5 U
METHYL TERT-BUTYL ETHER	0.5 U	0.5 U	0.5 U	0.5 U	0.5 U	0.5 U	0.5 U
METHYLENE CHLORIDE	0.5 U	0.5 U	0.5 U	0.5 U	0.5 U	0.5 U	0.5 U
O-XYLENE	0.5 U	0.5 U	0.5 U	0.5 U	0.5 U	0.5 U	0.5 U
STYRENE	0.5 U	0.5 U	0.5 U	0.5 U	0.5 U	0.5 U	0.5 U
TETRACHLOROETHENE	5.8	14.7	0.5 U	0.5 U	2	0.99 J	0.99 J
TOLUENE	0.5 U	0.5 U	0.5 U	0.5 U	0.5 U	0.5 U	0.5 U
TRANS-1,2-DICHLOROETHENE	0.5 U	0.5 U	0.5 U	0.5 U	0.5 U	0.5 U	0.5 U
TRANS-1,3-DICHLOROPROPENE	0.5 U	0.5 U	0.5 U	0.5 U	0.5 U	0.5 U	0.5 U
TRICHLOROETHENE	71.1	220	3.7	97.3	2400	1.8	13.4
TRICHLOROFLUOROMETHANE	0.5 U	0.5 U	0.5 U	0.5 U	0.5 U	0.5 U	0.5 U
VINYL CHLORIDE	0.5 U	0.5 U	0.5 U	0.5 U	0.5 U	0.5 U	0.5 U
<b>METHOD 8270D (UG/L)</b>							
1,4-DIOXANE	0.26	0.96	0.15 J	2.4	5	0.12 J	4.2
<b>METHOD 8260 SIM (UG/L)</b>							
1,4-DIOXANE	--	--	--	--	--	--	--
<b>METHOD 522 (UG/L)</b>							
1,4-DIOXANE	--	--	--	--	--	--	--

UG/L - micrograms per liter  
J - estimated value  
U - non-detect  
UJ - non-detect

Q4, 2021 (December) Validated Analytical Data  
Navy OU2 Groundwater Sampling, NWIRP Bethpage  
Page 4 of 13

LOCATION SAMPLE ID SAMPLE DATE	RE103D1 RE103D1-20211130 11/30/2021	RE103D2 RE103D2-20211130 11/30/2021	RE103D3 RE103D3-20211130 11/30/2021	RE103D3 RE103D3-20211130-D 11/30/2021	RE104D1 RE104D1-20211207 12/07/2021	RE104D2 RE104D2-20211207 12/07/2021	RE104D3 RE104D3-20211207 12/07/2021
<b>VOLATILES (UG/L)</b>							
1,1,1-TRICHLOROETHANE	0.5 U	0.5 U	0.5 U	0.5 U	0.5 U	0.5 U	0.5 U
1,1,2,2-TETRACHLOROETHANE	0.75 U	0.75 U	0.75 U	0.75 U	0.75 U	0.75 U	0.75 U
1,1,2-TRICHLOROETHANE	0.5 U	0.5 U	0.5 U	0.5 U	0.5 U	0.5 U	0.5 U
1,1,2-TRICHLOROTRIFLUOROETHANE	7.3	2.1	1.8	1.9	0.5 U	0.5 U	0.5 U
1,1-DICHLOROETHANE	0.5 U	0.5 U	0.5 U	0.5 U	0.5 U	0.5 U	0.5 U
1,1-DICHLOROETHENE	2.5	0.75 U	0.75 U	0.75 U	0.75 U	0.75 U	0.75 U
1,2-DICHLOROBENZENE	0.5 U	0.5 U	0.5 U	0.5 U	0.5 U	0.5 U	0.5 U
1,2-DICHLOROETHANE	0.5 U	0.5 U	0.5 U	0.5 U	0.5 U	0.77 J	0.5 U
1,2-DICHLOROPROPANE	0.5 U	0.5 U	0.5 U	0.5 U	0.5 U	0.5 U	0.5 U
1,3-DICHLOROBENZENE	0.5 U	0.5 U	0.5 U	0.5 U	0.5 U	0.5 U	0.5 U
1,4-DICHLOROBENZENE	0.5 U	0.5 U	0.5 U	0.5 U	0.5 U	0.5 U	0.5 U
2-BUTANONE	2.5 U	2.5 U	2.5 U	2.5 U	2.5 U	2.5 U	2.5 U
2-HEXANONE	2.5 U	2.5 U	2.5 U	2.5 U	2.5 U	2.5 U	2.5 U
4-METHYL-2-PENTANONE	2.5 U	2.5 U	2.5 U	2.5 U	2.5 U	2.5 U	2.5 U
ACETONE	5 U	5 U	2.3 J	3.8 U	3.8 U	3.8 U	3.8 U
BENZENE	0.5 U	0.5 U	0.5 U	0.5 U	0.5 U	0.5 U	0.5 U
BROMODICHLOROMETHANE	0.25 U	0.25 U	0.25 U	0.25 U	0.25 U	0.25 U	0.25 U
BROMOFORM	0.5 U	0.5 U	0.5 U	0.5 U	0.5 U	0.5 U	0.5 U
BROMOMETHANE	2.5 U	2.5 U	2.5 U	2.5 U	2.5 U	2.5 U	2.5 U
CARBON DISULFIDE	0.75 U	0.75 U	0.75 U	0.75 U	0.75 U	0.75 U	0.75 U
CARBON TETRACHLORIDE	0.75 U	0.75 U	0.75 U	0.75 U	0.75 U	0.75 U	0.75 U
CHLOROBENZENE	0.5 U	0.5 U	0.5 U	0.5 U	0.5 U	0.5 U	0.5 U
CHLORODIBROMOMETHANE	0.5 U	0.5 U	0.5 U	0.5 U	0.5 U	0.5 U	0.5 U
CHLOROETHANE	0.75 U	0.75 U	0.75 U	0.75 U	0.75 U	0.75 U	0.75 U
CHLOROFORM	0.75 U	0.75 U	0.75 U	0.75 U	0.75 U	0.9 J	0.75 U
CHLOROMETHANE	0.75 U	0.75 U	0.75 U	0.75 U	0.75 U	0.75 U	0.75 U
CIS-1,2-DICHLOROETHENE	1.9	0.75 U	0.75 U	0.27 J	0.75 U	17.9	0.75 U
CIS-1,3-DICHLOROPROPENE	0.5 U	0.5 U	0.5 U	0.5 UJ	0.5 U	0.5 U	0.5 U
ETHYLBENZENE	0.5 U	0.5 U	0.5 U	0.5 U	0.5 U	0.5 U	0.5 U
ISOPROPYLBENZENE	0.5 U	0.5 U	0.5 U	0.5 U	0.5 U	0.5 U	0.5 U
M+P-XYLENES	1 U	1 U	1 U	1 U	1 U	1 U	1 U
METHYL CYCLOHEXANE	0.5 U	0.5 U	0.5 U	0.5 UJ	0.5 U	0.5 U	0.5 U
METHYL TERT-BUTYL ETHER	0.5 U	0.5 U	0.5 U	0.5 U	0.5 U	0.5 U	0.5 U
METHYLENE CHLORIDE	0.5 U	0.5 U	0.5 U	0.5 U	0.5 U	0.5 U	0.5 U
O-XYLENE	0.5 U	0.5 U	0.5 U	0.5 U	0.5 U	0.5 U	0.5 U
STYRENE	0.5 U	0.5 U	0.5 U	0.5 UJ	0.5 U	0.5 U	0.5 U
TETRACHLOROETHENE	4.4	0.46 J	0.33 J	0.33 J	1.7	0.5 U	0.5 U
TOLUENE	0.5 U	0.5 U	0.5 U	0.5 U	0.5 U	0.5 U	0.5 U
TRANS-1,2-DICHLOROETHENE	0.5 U	0.5 U	0.5 U	0.5 U	0.5 U	0.5 U	0.5 U
TRANS-1,3-DICHLOROPROPENE	0.5 U	0.5 U	0.5 U	0.5 UJ	0.5 U	0.5 U	0.5 U
TRICHLOROETHENE	650	320	190	220	24.8	140	0.5 U
TRICHLOROFLUOROMETHANE	0.5 U	0.5 U	0.5 U	0.5 U	0.5 U	0.5 U	0.5 U
VINYL CHLORIDE	0.5 U	0.5 U	0.5 U	0.5 U	0.5 U	0.5 U	0.5 U
<b>METHOD 8270D (UG/L)</b>							
1,4-DIOXANE	5.6	0.45	0.3	0.31	3.6	1.5	0.21 U
<b>METHOD 8260 SIM (UG/L)</b>							
1,4-DIOXANE	--	--	--	--	--	--	--
<b>METHOD 522 (UG/L)</b>							
1,4-DIOXANE	--	--	--	--	--	--	--

UG/L - micrograms per liter

J - estimated value

U - non-detect

UJ - non-detect

Q4, 2021 (December) Validated Analytical Data  
Navy OU2 Groundwater Sampling, NWIRP Bethpage  
Page 5 of 13

LOCATION SAMPLE ID SAMPLE DATE	RE105D1 RE105D1-20211202 12/02/2021	RE105D2 RE105D2-20211201 12/01/2021	RE108D1 RE108D1-20211202 12/02/2021	RE108D2 RE108D2-20211202 12/02/2021	RE108-RW04 RW4-20211206 12/06/2021	RE109D1 RE109D1-20211206 12/06/2021	RE109D2 RE109D2-20211207 12/07/2021
<b>VOLATILES (UG/L)</b>							
1,1,1-TRICHLOROETHANE	0.5 U	5 U	0.5 U	0.5 U	0.5 U	0.5 U	0.5 U
1,1,2,2-TETRACHLOROETHANE	0.75 U	7.5 U	0.75 U	0.75 U	0.75 U	0.75 U	0.75 U
1,1,2-TRICHLOROETHANE	0.5 U	5 U	0.5 U	0.5 U	0.25 J	0.5 U	0.5 U
1,1,2-TRICHLOROTRIFLUOROETHANE	3.4	19.5	0.5 U	28.7	4.6	0.5 U	0.5 U
1,1-DICHLOROETHANE	0.5 U	5 U	0.5 U	1.6	0.32 J	0.5 U	0.5 U
1,1-DICHLOROETHENE	0.75 U	6 J	0.75 U	17.7	1.6	0.75 U	0.75 U
1,2-DICHLOROBENZENE	0.5 U	5 U	0.5 U	0.5 U	0.5 U	0.5 U	0.5 U
1,2-DICHLOROETHANE	0.5 U	5 U	0.5 U	0.5 U	0.5 U	0.5 U	0.5 U
1,2-DICHLOROPROPANE	0.5 U	5 U	0.5 U	0.5 U	0.5 U	0.5 U	0.5 U
1,3-DICHLOROBENZENE	0.5 U	5 U	0.5 U	0.5 U	0.5 U	0.5 U	0.5 U
1,4-DICHLOROBENZENE	0.5 U	5 U	0.5 U	0.5 U	0.5 U	0.5 U	0.5 U
2-BUTANONE	2.5 U	25 U	2.5 U	2.5 U	2.5 U	2.5 U	2.5 U
2-HEXANONE	2.5 U	25 U	2.5 U	2.5 U	2.5 U	2.5 U	2.5 U
4-METHYL-2-PENTANONE	2.5 U	25 U	2.5 U	2.5 U	2.5 U	2.5 U	2.5 U
ACETONE	3.8 U	37.5 U	1.8 J	3.4 J	2.6 J	3.8 U	3.8 U
BENZENE	0.5 U	5 U	0.5 U	0.5 U	0.5 U	0.5 U	0.5 U
BROMODICHLOROMETHANE	0.25 U	2.5 U	0.25 U	0.25 U	0.25 U	0.25 U	0.25 U
BROMOFORM	0.5 U	5 U	0.5 U	0.5 U	0.5 U	0.5 U	0.5 U
BROMOMETHANE	2.5 U	25 U	2.5 U	2.5 U	2.5 U	2.5 U	2.5 U
CARBON DISULFIDE	0.75 U	7.5 U	0.75 U	0.75 U	0.75 U	0.75 U	0.75 U
CARBON TETRACHLORIDE	0.75 U	7.5 U	0.75 U	1.3	0.3 J	0.75 U	0.75 U
CHLOROBENZENE	0.5 U	5 U	0.5 U	0.5 U	0.5 U	0.5 U	0.5 U
CHLORODIBROMOMETHANE	0.5 U	5 U	0.5 U	0.5 U	0.5 U	0.5 U	0.5 U
CHLOROETHANE	0.75 U	7.5 U	0.75 U	0.75 U	0.75 U	0.75 U	0.75 U
CHLOROFORM	0.75 U	7.5 U	0.75 U	0.71 J	0.75 U	0.75 U	0.75 U
CHLOROMETHANE	0.75 U	7.5 U	0.75 U	0.75 U	0.75 U	0.75 U	0.75 U
CIS-1,2-DICHLOROETHENE	0.75 U	7.5 U	0.75 U	2.4	1.1	0.75 U	0.75 U
CIS-1,3-DICHLOROPROPENE	0.5 U	5 U	0.5 U	0.5 U	0.5 U	0.5 U	0.5 U
ETHYLBENZENE	0.5 U	5 U	0.5 U	0.5 U	0.5 U	0.5 U	0.5 U
ISOPROPYLBENZENE	0.5 U	5 U	0.5 U	0.5 U	0.5 U	0.5 U	0.5 U
M+P-XYLENES	1 U	10 U	1 U	1 U	1 U	1 U	1 U
METHYL CYCLOHEXANE	0.5 U	5 U	0.5 U	0.5 U	0.5 U	0.5 U	0.5 U
METHYL TERT-BUTYL ETHER	0.5 U	5 U	0.5 U	0.5 U	0.5 U	0.5 U	0.5 U
METHYLENE CHLORIDE	0.5 U	5 U	0.5 U	0.5 U	0.5 U	0.5 U	0.5 U
O-XYLENE	0.5 U	5 U	0.5 U	0.5 U	0.5 U	0.5 U	0.5 U
STYRENE	0.5 U	5 U	0.5 U	0.5 U	0.5 U	0.5 U	0.5 U
TETRACHLOROETHENE	0.5 U	2.3 J	1.2	0.5 U	3.1	0.61 J	0.52 J
TOLUENE	0.5 U	5 U	0.5 U	0.5 U	0.5 U	0.5 U	0.5 U
TRANS-1,2-DICHLOROETHENE	0.5 U	5 U	0.5 U	0.5 U	0.5 U	0.5 U	0.5 U
TRANS-1,3-DICHLOROPROPENE	0.5 U	5 U	0.5 U	0.5 U	0.5 U	0.5 U	0.5 U
TRICHLOROETHENE	74 J	1500	29.7	250	580	11.7	24
TRICHLOROFLUOROMETHANE	0.5 U	5 U	0.5 U	0.5 U	0.5 U	0.5 U	0.5 U
VINYL CHLORIDE	0.5 U	5 U	0.5 U	0.5 U	0.5 U	0.5 U	0.5 U
<b>METHOD 8270D (UG/L)</b>							
1,4-DIOXANE	4.6 J	3.3	4.2	3.6	4.4	3	3.7
<b>METHOD 8260 SIM (UG/L)</b>							
1,4-DIOXANE	--	--	--	--	--	--	--
<b>METHOD 522 (UG/L)</b>							
1,4-DIOXANE	--	--	--	--	--	--	--

UG/L - micrograms per liter  
J - estimated value  
U - non-detect  
UJ - non-detect

Q4, 2021 (December) Validated Analytical Data  
Navy OU2 Groundwater Sampling, NWIRP Bethpage  
Page 6 of 13

LOCATION SAMPLE ID SAMPLE DATE	RE109D3 RE109D3-20211207 12/07/2021	RE114D1 RE114D1-20211206 12/06/2021	RE114D2 RE114D2-20211206 12/06/2021	RE115D1 RE115D1-20211130 11/30/2021	RE115D1 RE115D1-20211130-D 11/30/2021	RE115D2 RE115D2-20211130 11/30/2021	RE117D1 RE117D1-20211130 11/30/2021
<b>VOLATILES (UG/L)</b>							
1,1,1-TRICHLOROETHANE	0.5 U	0.5 U	0.5 U	0.5 U	0.38 J	0.5 U	0.5 U
1,1,2,2-TETRACHLOROETHANE	0.75 U	0.75 U	0.75 U	0.75 U	0.75 U	0.75 U	0.75 U
1,1,2-TRICHLOROETHANE	0.5 U	0.8 J	0.5 U	0.5 U	0.52 J	1.2	0.26 J
1,1,2-TRICHLOROTRIFLUOROETHANE	1.1	18.1	10	14 J	8.6 J	45.8	0.5 U
1,1-DICHLOROETHANE	0.5 U	0.81 J	0.5 U	0.5 U	0.65 J	2.9	0.5 U
1,1-DICHLOROETHENE	0.75 U	2.9	0.74 J	5.7	4.2	23.5	0.54 J
1,2-DICHLOROBENZENE	0.5 U	0.5 U	0.5 U	0.5 U	0.5 U	0.5 U	0.5 U
1,2-DICHLOROETHANE	0.5 U	0.5 U	0.5 U	0.5 U	0.25 J	0.5 U	0.5 U
1,2-DICHLOROPROPANE	0.5 U	0.5 U	0.5 U	0.5 U	0.5 U	0.5 U	0.5 U
1,3-DICHLOROBENZENE	0.5 U	0.5 U	0.5 U	0.5 U	0.5 U	0.5 U	0.5 U
1,4-DICHLOROBENZENE	0.5 U	0.5 U	0.5 U	0.5 U	0.5 U	0.5 U	0.5 U
2-BUTANONE	2.5 U	2.5 U	2.5 U	2.5 U	2.5 U	2.5 U	2.5 U
2-HEXANONE	2.5 U	2.5 U	2.5 U	2.5 U	2.5 U	2.5 U	2.5 U
4-METHYL-2-PENTANONE	2.5 U	2.5 U	2.5 U	2.5 U	2.5 U	2.5 U	2.5 U
ACETONE	3.8 U	3.8 UJ	3.8 U	3.8 U	2.2 J	3.8 U	2.2 J
BENZENE	0.5 U	0.5 U	0.5 U	0.5 U	0.5 U	0.5 U	0.5 U
BROMODICHLOROMETHANE	0.25 U	0.25 U	0.25 U	0.25 U	0.25 U	0.25 U	0.25 U
BROMOFORM	0.5 U	0.5 U	0.5 U	0.5 U	0.5 U	0.5 U	0.5 U
BROMOMETHANE	2.5 U	2.5 U	2.5 U	2.5 U	2.5 U	2.5 U	2.5 U
CARBON DISULFIDE	0.75 U	0.75 U	0.75 U	0.75 U	0.75 U	0.75 U	0.75 U
CARBON TETRACHLORIDE	0.75 U	1.4	0.39 J	1.6	1.4	1.9	0.71 J
CHLOROBENZENE	0.5 U	0.5 U	0.5 U	0.5 U	0.5 U	0.5 U	0.5 U
CHLORODIBROMOMETHANE	0.5 U	0.5 U	0.5 U	0.5 U	0.5 U	0.5 U	0.5 U
CHLOROETHANE	0.75 U	0.75 U	0.75 U	0.75 U	0.75 U	0.75 U	0.75 U
CHLOROFORM	0.75 U	1.4	0.34 J	1.5	1.3	1.2	0.75 U
CHLOROMETHANE	0.75 U	0.75 U	0.75 U	0.75 U	0.75 U	0.75 U	0.75 U
CIS-1,2-DICHLOROETHENE	0.75 U	2.9	0.92 J	2	1.5	3.8	0.52 J
CIS-1,3-DICHLOROPROPENE	0.5 U	0.5 U	0.5 U	0.5 U	0.5 UJ	0.5 U	0.5 U
ETHYLBENZENE	0.5 U	0.5 U	0.5 U	0.5 U	0.5 U	0.5 U	0.5 U
ISOPROPYLBENZENE	0.5 U	0.5 U	0.5 U	0.5 U	0.5 U	0.5 U	0.5 U
M+P-XYLENES	1 U	1 U	1 U	1 U	1 U	1 U	1 U
METHYL CYCLOHEXANE	0.5 U	0.5 U	0.5 U	0.5 U	0.5 UJ	0.5 U	0.5 U
METHYL TERT-BUTYL ETHER	0.5 U	0.5 U	0.5 U	0.5 U	0.5 U	0.5 U	0.5 U
METHYLENE CHLORIDE	0.5 U	0.5 U	0.5 U	0.5 U	0.5 U	0.5 U	0.5 U
O-XYLENE	0.5 U	0.5 U	0.5 U	0.5 U	0.5 U	0.5 U	0.5 U
STYRENE	0.5 U	0.5 U	0.5 U	0.5 U	0.5 UJ	0.5 U	0.5 U
TETRACHLOROETHENE	0.76 J	0.5 U	0.22 J	0.5 U	0.5 U	0.47 J	0.5 U
TOLUENE	0.5 U	0.5 U	0.5 U	0.5 U	0.5 U	0.5 U	0.5 U
TRANS-1,2-DICHLOROETHENE	0.5 U	0.5 U	0.5 U	0.5 U	0.5 U	0.5 U	0.5 U
TRANS-1,3-DICHLOROPROPENE	0.5 U	0.5 U	0.5 U	0.5 U	0.5 UJ	0.5 U	0.5 U
TRICHLOROETHENE	37.8	270	61	180	170	760	54.4
TRICHLOROFLUOROMETHANE	0.5 U	0.5 U	0.33 J	0.5 U	0.5 U	0.5 U	0.5 U
VINYL CHLORIDE	0.5 U	0.5 U	0.5 U	0.5 U	0.5 U	0.5 U	0.5 U
<b>METHOD 8270D (UG/L)</b>							
1,4-DIOXANE	3.9	3.5	2.8	5	4.1	5	0.22
<b>METHOD 8260 SIM (UG/L)</b>							
1,4-DIOXANE	--	--	--	--	--	--	--
<b>METHOD 522 (UG/L)</b>							
1,4-DIOXANE	--	--	--	--	--	--	--

UG/L - micrograms per liter

J - estimated value

U - non-detect

UJ - non-detect



Q4, 2021 (December) Validated Analytical Data  
Navy OU2 Groundwater Sampling, NWIRP Bethpage  
Page 7 of 13

LOCATION SAMPLE ID SAMPLE DATE	RE117D2 RE117D2-20211130 11/30/2021	RE120D1 RE120D1-20211201 12/01/2021	RE120D2 RE120D2-20211201 12/01/2021	RE120D3 RE120D3-20211201 12/01/2021	RE122D1 RE122D1-20211207 12/07/2021	RE122D1 RE122D1-20211207-D 12/07/2021	RE122D2 RE122D2-20211207 12/07/2021
<b>VOLATILES (UG/L)</b>							
1,1,1-TRICHLOROETHANE	0.5 U	0.5 U	0.5 U	0.5 U	0.5 U	5 U	5 U
1,1,2,2-TETRACHLOROETHANE	0.75 U	0.75 U	0.75 U	0.75 U	0.75 U	7.5 U	7.5 U
1,1,2-TRICHLOROETHANE	0.5 U	0.5 U	0.5 U	0.5 U	0.5 U	5 U	5 U
1,1,2-TRICHLOROTRIFLUOROETHANE	0.5 U	11	19.4	0.5 U	2.3 J	3.6 J	11.8
1,1-DICHLOROETHANE	0.5 U	0.5 U	0.5 U	0.5 U	0.5 U	5 U	5 U
1,1-DICHLOROETHENE	0.75 U	5.1	2.3	0.75 U	0.75 U	7.5 U	7.5 U
1,2-DICHLOROBENZENE	0.5 U	0.5 U	0.5 U	0.5 U	0.5 U	5 U	5 U
1,2-DICHLOROETHANE	0.5 U	0.5 U	0.5 U	0.5 U	0.5 U	5 U	5 U
1,2-DICHLOROPROPANE	0.5 U	0.5 U	0.5 U	0.5 U	0.5 U	5 U	5 U
1,3-DICHLOROBENZENE	0.5 U	0.5 U	0.5 U	0.5 U	0.5 U	5 U	5 U
1,4-DICHLOROBENZENE	0.5 U	0.5 U	0.5 U	0.5 U	0.5 U	5 U	5 U
2-BUTANONE	2.5 U	2.5 U	2.5 U	2.5 U	2.5 U	25 U	25 U
2-HEXANONE	2.5 U	2.5 U	2.5 U	2.5 U	2.5 U	25 U	25 U
4-METHYL-2-PENTANONE	2.5 U	2.5 U	2.5 U	2.5 U	2.5 U	25 U	25 U
ACETONE	3 J	5 U	5 U	5 U	3.8 U	37.5 U	37.5 U
BENZENE	0.5 U	0.5 U	0.5 U	0.5 U	0.5 U	5 U	5 U
BROMODICHLOROMETHANE	0.25 U	0.25 U	0.25 U	0.25 U	0.25 U	2.5 U	2.5 U
BROMOFORM	0.5 U	0.5 U	0.5 U	0.5 U	0.5 U	5 U	5 U
BROMOMETHANE	2.5 U	2.5 U	2.5 U	2.5 U	2.5 U	25 U	25 U
CARBON DISULFIDE	0.75 U	0.75 U	0.75 U	0.75 U	0.75 U	7.5 U	7.5 U
CARBON TETRACHLORIDE	0.75 U	0.75 U	0.75 U	0.75 U	0.75 U	7.5 U	7.5 U
CHLOROBENZENE	0.5 U	0.5 U	0.5 U	0.5 U	0.5 U	5 U	5 U
CHLORODIBROMOMETHANE	0.5 U	0.5 U	0.5 U	0.5 U	0.5 U	5 U	5 U
CHLOROETHANE	0.75 U	0.75 U	0.75 U	0.75 U	0.75 U	7.5 U	7.5 U
CHLOROFORM	0.75 U	0.75 U	0.75 U	0.75 U	0.75 U	7.5 U	7.5 U
CHLOROMETHANE	0.75 U	0.75 U	0.75 U	0.75 U	0.75 U	7.5 U	7.5 U
CIS-1,2-DICHLOROETHENE	0.75 U	2.4	2.4	0.75 U	1.6	7.5 U	7.5 U
CIS-1,3-DICHLOROPROPENE	0.5 U	0.5 U	0.5 U	0.5 U	0.5 U	5 U	5 U
ETHYLBENZENE	0.5 U	0.5 U	0.5 U	0.5 U	0.5 U	5 U	5 U
ISOPROPYLBENZENE	0.5 U	0.5 U	0.5 U	0.5 U	0.5 U	5 U	5 U
M+P-XYLENES	1 U	1 U	1 U	1 U	1 U	10 U	10 U
METHYL CYCLOHEXANE	0.5 U	0.5 U	0.5 U	0.5 U	0.5 U	5 U	5 U
METHYL TERT-BUTYL ETHER	0.5 U	0.5 U	0.5 U	0.5 U	0.5 U	5 U	5 U
METHYLENE CHLORIDE	0.5 U	0.5 U	0.5 U	0.5 U	0.5 U	5 U	5 U
O-XYLENE	0.5 U	0.5 U	0.5 U	0.5 U	0.5 U	5 U	5 U
STYRENE	0.5 U	0.5 U	0.5 U	0.5 U	0.5 U	5 U	5 U
TETRACHLOROETHENE	0.5 U	3.1	4.8	0.5 U	1.4 J	2.1 J	3.4 J
TOLUENE	0.5 U	0.5 U	0.5 U	0.5 U	0.5 U	5 U	5 U
TRANS-1,2-DICHLOROETHENE	0.5 U	0.5 U	0.5 U	0.5 U	0.5 U	5 U	5 U
TRANS-1,3-DICHLOROPROPENE	0.5 U	0.5 U	0.5 U	0.5 U	0.5 U	5 U	5 U
TRICHLOROETHENE	0.41 J	690	450	14.2	320	350	3200
TRICHLOROFLUOROMETHANE	0.5 U	0.5 U	0.5 U	0.5 U	0.5 U	5 U	5 U
VINYL CHLORIDE	0.5 U	0.5 U	0.5 U	0.5 U	0.5 U	5 U	5 U
<b>METHOD 8270D (UG/L)</b>							
1,4-DIOXANE	0.2 U	6.9	6.1	0.2 U	3.6	3.5	3.4
<b>METHOD 8260 SIM (UG/L)</b>							
1,4-DIOXANE	--	25	17	0.25	--	--	--
<b>METHOD 522 (UG/L)</b>							
1,4-DIOXANE	--	20 J	--	0.22 J	--	--	--

UG/L - micrograms per liter  
J - estimated value  
U - non-detect  
UU - non-detect

Q4, 2021 (December) Validated Analytical Data  
Navy OU2 Groundwater Sampling, NWIRP Bethpage  
Page 8 of 13

LOCATION SAMPLE ID SAMPLE DATE	RE122D3 RE122D3-20211207 12/07/2021	RE123D1 RE123D1-20211204 12/04/2021	RE123D2 RE123D2-20211204 12/04/2021	RE123D3 RE123D3-20211204 12/04/2021	RE125D1 RE125D1-20211206 12/06/2021	RE125D2 RE125D2-20211206 12/06/2021	RE125D3 RE125D3-20211206 12/06/2021
<b>VOLATILES (UG/L)</b>							
1,1,1-TRICHLOROETHANE	0.5 U	0.5 U	0.5 U	0.5 U	0.5 U	0.5 U	0.5 U
1,1,2,2-TETRACHLOROETHANE	0.75 U	0.75 U	0.75 U	0.75 U	0.75 U	0.75 U	0.75 U
1,1,2-TRICHLOROETHANE	0.5 U	0.5 U	0.5 U	0.5 U	0.5 U	0.5 U	0.5 U
1,1,2-TRICHLOROTRIFLUOROETHANE	0.5 U	0.72 J	0.5 U	0.5 U	3.8	14.8	57.5
1,1-DICHLOROETHANE	0.5 U	0.5 U	0.5 U	0.5 U	0.64 J	0.5 U	0.5 U
1,1-DICHLOROETHENE	0.75 U	0.75 U	0.75 U	0.75 U	0.99 J	3.5	0.75 U
1,2-DICHLOROBENZENE	0.5 U	0.5 U	0.5 U	0.5 U	0.5 U	0.5 U	0.5 U
1,2-DICHLOROETHANE	0.5 U	0.5 U	0.5 U	0.5 U	0.5 U	0.5 U	0.5 U
1,2-DICHLOROPROPANE	0.5 U	0.5 U	0.5 U	0.5 U	0.5 U	0.5 U	0.5 U
1,3-DICHLOROBENZENE	0.5 U	0.5 U	0.5 U	0.5 U	0.5 U	0.5 U	0.5 U
1,4-DICHLOROBENZENE	0.5 U	0.5 U	0.5 U	0.5 U	0.5 U	0.5 U	0.5 U
2-BUTANONE	2.5 U	2.5 U	2.5 U	2.5 U	2.5 U	2.5 U	2.5 U
2-HEXANONE	2.5 U	2.5 U	2.5 U	2.5 U	2.5 U	2.5 U	2.5 U
4-METHYL-2-PENTANONE	2.5 U	2.5 U	2.5 U	2.5 U	2.5 U	2.5 U	2.5 U
ACETONE	3.8 U	5 U	5 U	5 U	2.1 J	3.8 U	1.7 J
BENZENE	0.5 U	0.5 U	0.5 U	0.5 U	0.5 U	0.5 U	0.5 U
BROMODICHLOROMETHANE	0.25 U	0.25 U	0.25 U	0.25 U	0.25 U	0.25 U	0.25 U
BROMOFORM	0.5 U	0.5 U	0.5 U	0.5 U	0.5 U	0.5 U	0.5 U
BROMOMETHANE	2.5 U	2.5 U	2.5 U	2.5 U	2.5 U	2.5 U	2.5 U
CARBON DISULFIDE	0.75 U	0.75 U	0.75 U	0.75 U	0.75 U	0.75 U	0.75 U
CARBON TETRACHLORIDE	0.75 U	0.75 U	0.75 U	0.75 U	0.75 U	0.75 U	0.33 J
CHLOROBENZENE	0.5 U	0.5 U	0.5 U	0.5 U	0.5 U	0.5 U	0.5 U
CHLORODIBROMOMETHANE	0.5 U	0.5 U	0.5 U	0.5 U	0.5 U	0.5 U	0.5 U
CHLOROETHANE	0.75 U	0.75 U	0.75 U	0.75 U	0.75 U	0.75 U	0.75 U
CHLOROFORM	0.75 U	0.75 U	0.75 U	0.75 U	0.55 J	0.37 J	0.75 U
CHLOROMETHANE	0.75 U	0.75 U	0.75 U	0.75 U	0.75 U	0.75 U	0.75 U
CIS-1,2-DICHLOROETHENE	0.75 U	0.75 U	0.75 U	0.75 U	2.4	3.5	1.2
CIS-1,3-DICHLOROPROPENE	0.5 U	0.5 U	0.5 U	0.5 U	0.5 U	0.5 U	0.5 U
ETHYLBENZENE	0.5 U	0.5 U	0.5 U	0.5 U	0.5 U	0.5 U	0.5 U
ISOPROPYLBENZENE	0.5 U	0.5 U	0.5 U	0.5 U	0.5 U	0.5 U	0.5 U
M+P-XYLENES	1 U	1 U	1 U	1 U	1 U	1 U	1 U
METHYL CYCLOHEXANE	0.5 U	0.5 U	0.5 U	0.5 U	0.5 U	0.5 U	0.5 U
METHYL TERT-BUTYL ETHER	0.5 U	0.5 U	0.5 U	0.5 U	0.43 J	0.5 U	0.5 U
METHYLENE CHLORIDE	0.5 U	0.5 U	0.5 U	0.5 U	0.5 U	0.5 U	0.5 U
O-XYLENE	0.5 U	0.5 U	0.5 U	0.5 U	0.5 U	0.5 U	0.5 U
STYRENE	0.5 U	0.5 U	0.5 U	0.5 U	0.5 U	0.5 U	0.5 U
TETRACHLOROETHENE	0.5 U	0.3 J	1.2	0.5 U	5.5	5.8	4.2
TOLUENE	0.5 U	0.5 U	0.5 U	0.5 U	0.5 U	0.5 U	0.5 U
TRANS-1,2-DICHLOROETHENE	0.5 U	0.5 U	0.5 U	0.5 U	0.5 U	0.5 U	0.5 U
TRANS-1,3-DICHLOROPROPENE	0.5 U	0.5 U	0.5 U	0.5 U	0.5 U	0.5 U	0.5 U
TRICHLOROETHENE	2.1	1.6	1.7	0.5 U	140	230	120
TRICHLOROFLUOROMETHANE	0.5 U	0.5 U	0.5 U	0.5 U	0.5 U	0.5 U	0.5 U
VINYL CHLORIDE	0.5 U	0.5 U	0.5 U	0.5 U	0.5 U	0.5 U	0.5 U
<b>METHOD 8270D (UG/L)</b>							
1,4-DIOXANE	0.2 U	0.15 J	0.55	0.56	6.4	7.3	2.7
<b>METHOD 8260 SIM (UG/L)</b>							
1,4-DIOXANE	--	--	--	--	--	--	--
<b>METHOD 522 (UG/L)</b>							
1,4-DIOXANE	--	--	--	--	--	--	--

UG/L - micrograms per liter  
J - estimated value  
U - non-detect  
UJ - non-detect

Q4, 2021 (December) Validated Analytical Data  
Navy OU2 Groundwater Sampling, NWIRP Bethpage  
Page 9 of 13

LOCATION SAMPLE ID SAMPLE DATE	RE126D1 RE126D1-20211207 12/07/2021	RE126D2 RE126D2-20211207 12/07/2021	RE126D3 RE126D3-20211207 12/07/2021	RE131D1 RE131D1-20211130 11/30/2021	RE131D1 RE131D1-20211130-D 11/30/2021	RE131D2 RE131D2-20211130 11/30/2021	RE131D3 RE131D3-20211130 11/30/2021
<b>VOLATILES (UG/L)</b>							
1,1,1-TRICHLOROETHANE	0.5 U	0.5 U	0.5 U	0.5 U	0.5 U	0.5 U	0.5 U
1,1,2,2-TETRACHLOROETHANE	0.75 U	0.75 U	0.75 U	0.75 U	0.75 U	0.75 U	0.75 U
1,1,2-TRICHLOROETHANE	0.5 U	0.5 U	0.5 U	0.5 U	0.5 U	0.5 U	0.5 U
1,1,2-TRICHLOROTRIFLUOROETHANE	0.5 U	0.5 U	0.5 U	2.7	2.4	190	220
1,1-DICHLOROETHANE	0.5 U	0.5 U	0.5 U	0.32 J	0.33 J	0.24 J	0.5 U
1,1-DICHLOROETHENE	0.75 U	0.84 J	0.75 U	0.57 J	0.57 J	2	1.6
1,2-DICHLOROBENZENE	0.5 U	0.5 U	0.5 U	0.5 U	0.5 U	0.5 U	0.5 U
1,2-DICHLOROETHANE	0.5 U	0.5 U	0.5 U	0.5 U	0.5 U	0.28 J	0.5 U
1,2-DICHLOROPROPANE	0.5 U	0.5 U	0.5 U	0.5 U	0.5 U	0.5 U	0.33 J
1,3-DICHLOROBENZENE	0.5 U	0.5 U	0.5 U	0.5 U	0.5 U	0.5 U	0.5 U
1,4-DICHLOROBENZENE	0.5 U	0.5 U	0.5 U	0.5 U	0.5 U	0.5 U	0.5 U
2-BUTANONE	2.5 U	2.5 U	2.5 U	2.5 U	2.5 U	2.5 U	2.5 U
2-HEXANONE	2.5 U	2.5 U	2.5 U	2.5 U	2.5 U	2.5 U	2.5 U
4-METHYL-2-PENTANONE	2.5 U	2.5 U	2.5 U	2.5 U	2.5 U	2.5 U	2.5 U
ACETONE	3.8 U	3.8 U	3.8 U	3.8 U	3.8 U	3.8 U	3.8 U
BENZENE	0.5 U	0.5 U	0.5 U	0.5 U	0.5 U	0.5 U	0.5 U
BROMODICHLOROMETHANE	0.25 U	0.25 U	0.25 U	0.25 U	0.25 U	0.25 U	0.25 U
BROMOFORM	0.5 U	0.5 U	0.5 U	0.5 U	0.5 U	0.5 U	0.5 U
BROMOMETHANE	2.5 U	2.5 U	2.5 U	2.5 U	2.5 U	2.5 U	2.5 U
CARBON DISULFIDE	0.75 U	0.75 U	0.75 U	0.75 U	0.75 U	0.75 U	0.75 U
CARBON TETRACHLORIDE	0.75 U	0.75 U	0.75 U	0.75 U	0.75 U	0.75 U	0.75 U
CHLOROBENZENE	0.5 U	0.5 U	0.5 U	0.5 U	0.5 U	0.5 U	0.5 U
CHLORODIBROMOMETHANE	0.5 U	0.5 U	0.5 U	0.5 U	0.5 U	0.5 U	0.5 U
CHLOROETHANE	0.75 U	0.75 U	0.75 U	0.75 U	0.75 U	0.75 U	0.75 U
CHLOROFORM	0.75 U	0.75 U	0.75 U	0.86 J	0.87 J	0.75 U	0.75 U
CHLOROMETHANE	0.75 U	0.75 U	0.75 U	0.75 U	0.75 U	0.75 U	0.75 U
CIS-1,2-DICHLOROETHENE	0.75 U	0.61 J	0.75 U	2.8	2.9	3.3	0.52 J
CIS-1,3-DICHLOROPROPENE	0.5 U	0.5 U	0.5 U	0.5 U	0.5 UJ	0.5 U	0.5 U
ETHYLBENZENE	0.5 U	0.5 U	0.5 U	0.5 U	0.5 U	0.5 U	0.5 U
ISOPROPYLBENZENE	0.5 U	0.5 U	0.5 U	0.5 U	0.5 U	0.5 U	0.5 U
M+P-XYLENES	1 U	1 U	1 U	1 U	1 U	1 U	1 U
METHYL CYCLOHEXANE	0.5 U	0.5 U	0.5 U	0.5 U	0.5 UJ	0.5 U	0.5 U
METHYL TERT-BUTYL ETHER	0.5 U	0.5 U	0.5 U	0.7 J	0.73 J	0.5 U	0.5 U
METHYLENE CHLORIDE	0.5 U	0.5 U	0.5 U	0.5 U	0.5 U	0.5 U	0.5 U
O-XYLENE	0.5 U	0.5 U	0.5 U	0.5 U	0.5 U	0.5 U	0.5 U
STYRENE	0.5 U	0.5 U	0.5 U	0.5 U	0.5 UJ	0.5 U	0.5 U
TETRACHLOROETHENE	0.71 J	0.62 J	0.95 J	9.4	9.7	10.2	5.8
TOLUENE	0.5 U	0.5 U	0.5 U	0.5 U	0.5 U	0.5 U	0.5 U
TRANS-1,2-DICHLOROETHENE	0.5 U	0.5 U	0.5 U	0.5 U	0.5 U	0.5 U	0.5 U
TRANS-1,3-DICHLOROPROPENE	0.5 U	0.5 U	0.5 U	0.5 U	0.5 UJ	0.5 U	0.5 U
TRICHLOROETHENE	23.4	300	1.4	160	160	92.7	15
TRICHLOROFLUOROMETHANE	0.5 U	0.5 U	0.5 U	0.5 U	0.5 U	0.5 U	0.5 U
VINYL CHLORIDE	0.5 U	0.5 U	0.5 U	0.5 U	0.5 U	0.5 U	0.5 U
<b>METHOD 8270D (UG/L)</b>							
1,4-DIOXANE	3.7	3.1	0.23	7.1	6.9	7	2.6
<b>METHOD 8260 SIM (UG/L)</b>							
1,4-DIOXANE	--	--	--	--	--	--	--
<b>METHOD 522 (UG/L)</b>							
1,4-DIOXANE	--	--	--	--	--	--	--

UG/L - micrograms per liter  
J - estimated value  
U - non-detect  
UJ - non-detect



Q4, 2021 (December) Validated Analytical Data  
Navy OU2 Groundwater Sampling, NWIRP Bethpage  
Page 10 of 13

LOCATION SAMPLE ID SAMPLE DATE	RE132D1 RE132D1-20211129 11/29/2021	RE132D2 RE132D2-20211129 11/29/2021	RE132D3 RE132D3-20211129 11/29/2021	RE132D3 RE132D3-20211129-D 11/29/2021	RE132D4 RE132D4-20211129 11/29/2021	RE132D5 RE132D5-20211129 11/29/2021	RE132D6 RE132D6-20211129 11/29/2021
<b>VOLATILES (UG/L)</b>							
1,1,1-TRICHLOROETHANE	0.5 U	0.5 U	0.5 U	0.5 U	0.5 U	0.5 U	10 U
1,1,2,2-TETRACHLOROETHANE	0.75 U	0.75 U	0.75 U	0.75 U	0.75 U	0.75 U	15 U
1,1,2-TRICHLOROETHANE	0.5 U	0.5 U	0.5 U	0.5 U	0.5 U	0.29 J	10 U
1,1,2-TRICHLOROTRIFLUOROETHANE	4.3	2.5	2.4	2.5	3.7	7	27.6
1,1-DICHLOROETHANE	0.52 J	0.5 U	0.5 U	0.5 U	0.5 U	0.45 J	10 U
1,1-DICHLOROETHENE	0.8 J	0.75 U	0.75 U	0.75 U	0.73 J	1.5	10.5 J
1,2-DICHLOROBENZENE	0.5 U	0.5 U	0.5 U	0.5 U	0.5 U	0.5 U	10 U
1,2-DICHLOROETHANE	0.5 U	0.5 U	0.5 U	0.5 U	0.5 U	0.5 U	10 U
1,2-DICHLOROPROPANE	0.5 U	0.5 U	0.5 U	0.5 U	0.5 U	0.5 U	10 U
1,3-DICHLOROBENZENE	0.5 U	0.5 U	0.5 U	0.5 U	0.5 U	0.5 U	10 U
1,4-DICHLOROBENZENE	0.5 U	0.5 U	0.5 U	0.5 U	0.5 U	0.5 U	10 U
2-BUTANONE	2.5 U	2.5 U	2.5 U	2.5 U	2.5 U	2.5 U	50 U
2-HEXANONE	2.5 U	2.5 U	2.5 U	2.5 U	2.5 U	2.5 U	50 U
4-METHYL-2-PENTANONE	2.5 U	2.5 U	2.5 U	2.5 U	2.5 U	2.5 U	50 U
ACETONE	3.8 U	3.8 U	1.6 J	3.8 U	3.8 U	3.8 U	75 UJ
BENZENE	0.5 U	0.5 U	0.5 U	0.5 U	0.5 U	0.5 U	10 U
BROMODICHLOROMETHANE	0.25 U	0.25 U	0.25 U	0.25 U	0.25 U	0.25 U	5 U
BROMOFORM	0.5 U	0.5 U	0.5 U	0.5 U	0.5 U	0.5 U	10 U
BROMOMETHANE	2.5 U	2.5 U	2.5 U	2.5 U	2.5 U	2.5 U	50 U
CARBON DISULFIDE	0.75 U	0.75 U	0.75 U	0.75 U	0.75 U	0.75 U	15 U
CARBON TETRACHLORIDE	0.75 U	0.75 U	0.75 U	0.75 U	0.75 U	0.75 U	15 U
CHLOROBENZENE	0.5 U	0.5 U	0.5 U	0.5 U	0.5 U	0.5 U	10 U
CHLORODIBROMOMETHANE	0.5 U	0.5 U	0.5 U	0.5 U	0.5 U	0.5 U	10 U
CHLOROETHANE	0.75 U	0.75 U	0.75 U	0.75 U	0.75 U	0.75 U	15 U
CHLOROFORM	1.7	0.75 U	0.75 U	0.75 U	0.75 U	0.74 J	15 U
CHLOROMETHANE	0.75 U	0.75 U	0.75 U	0.75 U	0.75 U	0.27 J	15 U
CIS-1,2-DICHLOROETHENE	1.7	0.75 U	0.58 J	0.63 J	1.3	1.1	4.7 J
CIS-1,3-DICHLOROPROPENE	0.5 U	0.5 U	0.5 U	0.5 UJ	0.5 U	0.5 U	10 U
ETHYLBENZENE	0.5 U	0.5 U	0.5 U	0.5 U	0.5 U	0.5 U	10 U
ISOPROPYLBENZENE	0.5 U	0.5 U	0.5 U	0.5 U	0.5 U	0.5 U	10 U
M+P-XYLENES	1 U	1 U	1 U	1 U	1 U	1 U	20 U
METHYL CYCLOHEXANE	0.5 U	0.5 U	0.5 U	0.5 UJ	0.5 U	0.5 U	10 U
METHYL TERT-BUTYL ETHER	0.98 J	0.5 U	0.5 U	0.5 U	0.5 U	0.5 U	10 U
METHYLENE CHLORIDE	0.5 U	0.5 U	0.5 U	0.5 U	0.5 U	0.5 U	10 U
O-XYLENE	0.5 U	0.5 U	0.5 U	0.5 U	0.5 U	0.5 U	10 U
STYRENE	0.5 U	0.5 U	0.5 U	0.5 UJ	0.5 U	0.5 U	10 U
TETRACHLOROETHENE	2.4	0.5 U	1.4	1.3	3	0.5 U	10 U
TOLUENE	0.5 U	0.5 U	0.5 U	0.5 U	0.5 U	0.5 U	10 U
TRANS-1,2-DICHLOROETHENE	0.5 U	0.5 U	0.5 U	0.5 U	0.5 U	0.5 U	10 U
TRANS-1,3-DICHLOROPROPENE	0.5 U	0.5 U	0.5 U	0.5 UJ	0.5 U	0.5 U	10 U
TRICHLOROETHENE	98.7	2.3	51.3	51.6	150	77.3	1500
TRICHLOROFLUOROMETHANE	0.5 U	0.5 U	0.5 U	0.5 U	0.5 U	0.5 U	10 U
VINYL CHLORIDE	0.5 U	0.5 U	0.5 U	0.5 U	0.5 U	0.5 U	10 U
<b>METHOD 8270D (UG/L)</b>							
1,4-DIOXANE	2.9	5	3.9	4.1	5.7	5	3.9
<b>METHOD 8260 SIM (UG/L)</b>							
1,4-DIOXANE	--	--	--	--	--	--	--
<b>METHOD 522 (UG/L)</b>							
1,4-DIOXANE	--	--	--	--	--	--	--

UG/L - micrograms per liter  
J - estimated value  
U - non-detect  
UJ - non-detect

Q4, 2021 (December) Validated Analytical Data  
Navy OU2 Groundwater Sampling, NWIRP Bethpage  
Page 11 of 13

LOCATION SAMPLE ID SAMPLE DATE	RE132D7 RE132D7-20211129 11/29/2021	RE134D1 RE134D1-20211202 12/02/2021	RE134D2 RE134D2-20211202 12/02/2021	RE134D3 RE134D3-20211202 12/02/2021	RE134D4 RE134D4-20211202 12/02/2021	RE135D1 RE135D1-20211202 12/02/2021	RE135D2 RE135D2-20211202 12/02/2021
<b>VOLATILES (UG/L)</b>							
1,1,1-TRICHLOROETHANE	5 U	0.5 U	0.5 U	0.5 U	0.5 U	0.5 U	0.5 U
1,1,2,2-TETRACHLOROETHANE	7.5 U	0.75 U	0.75 U	0.75 U	0.75 U	0.75 U	0.75 U
1,1,2-TRICHLOROETHANE	5 U	0.5 U	0.5 U	0.5 U	0.5 U	0.5 U	0.5 U
1,1,2-TRICHLOROTRIFLUOROETHANE	14.3	0.5 U	11.8	430	210	0.5 U	0.5 U
1,1-DICHLOROETHANE	5 U	0.5 U	0.5 U	0.5 U	0.5 U	0.5 U	0.5 U
1,1-DICHLOROETHENE	4.4 J	0.75 U	0.35 J	3.6	1.5	0.75 U	0.75 U
1,2-DICHLOROBENZENE	5 U	0.5 U	0.5 U	0.5 U	0.5 U	0.5 U	0.5 U
1,2-DICHLOROETHANE	5 U	0.5 U	0.5 U	0.26 J	0.5 U	0.5 U	0.5 U
1,2-DICHLOROPROPANE	5 U	0.5 U	0.5 U	0.49 J	0.5 U	0.5 U	2
1,3-DICHLOROBENZENE	5 U	0.5 U	0.5 U	0.5 U	0.5 U	0.5 U	0.5 U
1,4-DICHLOROBENZENE	5 U	0.5 U	0.5 U	0.5 U	0.5 U	0.5 U	0.5 U
2-BUTANONE	25 U	2.5 U	2.5 U	2.5 U	2.5 U	2.5 U	2.5 U
2-HEXANONE	25 U	2.5 U	2.5 U	2.5 U	2.5 U	2.5 U	2.5 U
4-METHYL-2-PENTANONE	25 U	2.5 U	2.5 U	2.5 U	2.5 U	2.5 U	2.5 U
ACETONE	37.5 U	5 U	3.8 U	5 U	3.7 J	2.2 J	3.2 J
BENZENE	5 U	0.5 U	0.5 U	0.5 U	0.5 U	0.5 U	0.5 U
BROMODICHLOROMETHANE	2.5 U	0.25 U	0.25 U	0.25 U	0.25 U	0.25 U	0.25 U
BROMOFORM	5 U	0.5 U	0.5 U	0.5 U	0.5 U	0.5 U	0.5 U
BROMOMETHANE	25 U	2.5 U	2.5 U	2.5 U	2.5 U	2.5 U	2.5 U
CARBON DISULFIDE	7.5 U	0.75 U	0.75 U	0.75 U	0.75 U	0.75 U	0.75 U
CARBON TETRACHLORIDE	7.5 U	0.75 U	0.75 U	0.75 U	0.75 U	0.75 U	0.75 U
CHLOROBENZENE	5 U	0.5 U	0.5 U	0.5 U	0.5 U	0.5 U	0.5 U
CHLORODIBROMOMETHANE	5 U	0.5 U	0.5 U	0.5 U	0.5 U	0.5 U	0.5 U
CHLOROETHANE	7.5 U	0.75 U	0.75 U	0.75 U	0.75 U	0.75 U	0.75 U
CHLOROFORM	7.5 U	0.75 U	0.75 U	0.75 U	0.75 U	2.2	0.75 U
CHLOROMETHANE	7.5 U	0.75 U	0.75 U	0.75 U	0.75 U	0.75 U	0.75 U
CIS-1,2-DICHLOROETHENE	2.2 J	0.75 U	1.2	3	0.76 J	0.75 U	0.75 U
CIS-1,3-DICHLOROPROPENE	5 U	0.5 U	0.5 U	0.5 U	0.5 U	0.5 U	0.5 U
ETHYLBENZENE	5 U	0.5 U	0.5 U	0.5 U	0.5 U	0.5 U	0.5 U
ISOPROPYLBENZENE	5 U	0.5 U	0.5 U	0.5 U	0.5 U	0.5 U	0.5 U
M+P-XYLENES	10 U	1 U	1 U	1 U	1 U	1 U	1 U
METHYL CYCLOHEXANE	5 U	0.5 U	0.5 U	0.5 U	0.5 U	0.5 U	0.5 U
METHYL TERT-BUTYL ETHER	5 U	0.5 U	0.5 U	0.5 U	0.5 U	0.5 U	0.5 U
METHYLENE CHLORIDE	5 U	0.5 U	0.5 U	0.5 U	0.5 U	0.5 U	0.5 U
O-XYLENE	5 U	0.5 U	0.5 U	0.5 U	0.5 U	0.5 U	0.5 U
STYRENE	5 U	0.5 U	0.5 U	0.5 U	0.5 U	0.5 U	0.5 U
TETRACHLOROETHENE	5 U	0.39 J	7.2	75.8	9.8	0.5 U	0.5 U
TOLUENE	5 U	0.5 U	0.5 U	0.5 U	0.5 U	0.5 U	0.5 U
TRANS-1,2-DICHLOROETHENE	5 U	0.5 U	0.5 U	0.5 U	0.5 U	0.5 U	0.5 U
TRANS-1,3-DICHLOROPROPENE	5 U	0.5 U	0.5 U	0.5 U	0.5 U	0.5 U	0.5 U
TRICHLOROETHENE	740	2.8	72.2	140	19.3	0.5 U	0.88 J
TRICHLOROFLUOROMETHANE	5 U	0.5 U	0.5 U	0.5 U	0.5 U	0.5 U	0.5 U
VINYL CHLORIDE	5 U	0.5 U	0.5 U	0.5 U	0.5 U	0.5 U	0.5 U
<b>METHOD 8270D (UG/L)</b>							
1,4-DIOXANE	2.4	0.4	5.5	6.2	1.7	0.24	0.1 J
<b>METHOD 8260 SIM (UG/L)</b>							
1,4-DIOXANE	--	--	--	--	--	--	--
<b>METHOD 522 (UG/L)</b>							
1,4-DIOXANE	--	--	--	--	--	--	--

UG/L - micrograms per liter  
J - estimated value  
U - non-detect  
UJ - non-detect

Q4, 2021 (December) Validated Analytical Data  
Navy OU2 Groundwater Sampling, NWIRP Bethpage  
Page 12 of 13

LOCATION SAMPLE ID SAMPLE DATE	RE135D3 RE135D3-20211202 12/02/2021	RE137 RE137-20211204 12/04/2021	RE139D1 RE139D1-20211130 11/30/2021	RE139D1 RE139D1-20211130-D 11/30/2021	RE139D2 RE139D2-20211130 11/30/2021	RW8-MW01D1 RW8-MW01D1-20211102 11/02/2021	RW8-MW01D2 RW8-MW01D2-20211103 11/03/2021
<b>VOLATILES (UG/L)</b>							
1,1,1-TRICHLOROETHANE	0.5 U	5 U	0.5 U	0.5 U	0.5 U	0.5 U	0.5 U
1,1,2,2-TETRACHLOROETHANE	0.75 U	7.5 U	0.75 U	0.75 U	0.75 U	0.5 U	0.5 U
1,1,2-TRICHLOROETHANE	0.5 U	5 U	0.63 J	0.61 J	0.42 J	0.5 U	0.5 U
1,1,2-TRICHLOROTRIFLUOROETHANE	7.3	12.3	3.2	2.9	2.1	0.5 U	0.5 U
1,1-DICHLOROETHANE	0.5 U	5 U	0.38 J	0.37 J	0.29 J	0.5 U	0.5 U
1,1-DICHLOROETHENE	0.54 J	4.4 J	2.1	2.1	2.1	0.5 U	0.5 U
1,2-DICHLOROBENZENE	0.5 U	5 U	0.5 U	0.5 U	0.5 U	0.5 U	0.5 U
1,2-DICHLOROETHANE	0.5 U	5 U	0.5 U	0.5 U	0.5 U	0.5 U	0.5 U
1,2-DICHLOROPROPANE	4	5 U	0.5 U	0.5 U	0.5 U	0.5 U	0.5 U
1,3-DICHLOROBENZENE	0.5 U	5 U	0.5 U	0.5 U	0.5 U	0.5 U	0.5 U
1,4-DICHLOROBENZENE	0.5 U	5 U	0.5 U	0.5 U	0.5 U	0.5 U	0.5 U
2-BUTANONE	2.5 U	25 U	2.5 U	2.5 U	2.5 U	2.5 U	2.5 U
2-HEXANONE	2.5 U	25 U	2.5 U	2.5 U	2.5 U	2.5 U	2.5 U
4-METHYL-2-PENTANONE	2.5 U	25 U	2.5 U	2.5 U	2.5 U	2.5 U	2.5 U
ACETONE	3.7 J	37.5 U	1.9 J	1.7 J	3.8 UJ	2.5 U	3.4 J
BENZENE	0.5 U	5 U	0.5 U	0.5 U	0.5 U	0.5 U	0.5 U
BROMODICHLOROMETHANE	0.25 U	2.5 U	0.25 U	0.25 U	0.25 U	0.5 U	0.5 U
BROMOFORM	0.5 U	5 U	0.5 U	0.5 U	0.5 U	0.5 U	0.5 U
BROMOMETHANE	2.5 U	25 U	2.5 U	2.5 U	2.5 U	2.5 U	2.5 U
CARBON DISULFIDE	0.75 U	7.5 U	0.75 U	0.75 U	0.75 U	0.5 U	0.5 U
CARBON TETRACHLORIDE	0.75 U	7.5 U	0.74 J	0.76 J	0.99 J	0.5 U	0.5 U
CHLOROBENZENE	0.5 U	5 U	0.5 U	0.5 U	0.5 U	0.5 U	0.5 U
CHLORODIBROMOMETHANE	0.5 U	5 U	0.5 U	0.5 U	0.5 U	0.5 U	0.5 U
CHLOROETHANE	0.75 U	7.5 U	0.75 U	0.75 U	0.75 U	0.5 U	0.5 U
CHLOROFORM	0.75 U	7.5 U	0.47 J	0.48 J	0.31 J	0.5 U	0.5 U
CHLOROMETHANE	0.75 U	7.5 U	0.25 J	0.75 U	0.75 U	0.5 U	0.5 U
CIS-1,2-DICHLOROETHENE	3.4	7.5 U	0.96 J	0.99 J	1.1	0.5 U	0.5 U
CIS-1,3-DICHLOROPROPENE	0.5 U	5 U	0.5 U	0.5 UJ	0.5 U	0.5 U	0.5 U
ETHYLBENZENE	0.5 U	5 U	0.5 U	0.5 U	0.5 U	0.5 U	0.5 U
ISOPROPYLBENZENE	0.5 U	5 U	0.5 U	0.5 U	0.5 U	0.5 U	0.5 U
M+P-XYLENES	1 U	10 U	1 U	1 U	1 U	1 U	1 U
METHYL CYCLOHEXANE	0.5 U	5 U	0.5 U	0.5 UJ	0.5 U	0.5 U	0.5 U
METHYL TERT-BUTYL ETHER	0.5 U	5 U	0.5 U	0.5 U	0.5 U	0.5 U	0.5 U
METHYLENE CHLORIDE	0.5 U	5 U	0.5 U	0.5 U	0.5 U	0.5 U	0.5 U
O-XYLENE	0.5 U	5 U	0.5 U	0.5 U	0.5 U	0.5 U	0.5 U
STYRENE	0.5 U	5 U	0.5 U	0.5 UJ	0.5 U	0.5 U	0.5 U
TETRACHLOROETHENE	23	5 U	0.5 U	0.5 U	0.5 U	0.5 U	0.5 U
TOLUENE	0.5 U	5 U	0.5 U	0.5 U	0.5 U	0.5 U	0.5 U
TRANS-1,2-DICHLOROETHENE	0.5 U	5 U	0.5 U	0.5 U	0.5 U	0.5 U	0.5 U
TRANS-1,3-DICHLOROPROPENE	0.5 U	5 U	0.5 U	0.5 UJ	0.5 U	0.5 U	0.5 U
TRICHLOROETHENE	14.7	1000 J	100	98.6	120 J	0.5 U	0.5 U
TRICHLOROFLUOROMETHANE	0.5 U	5 U	0.5 U	0.5 U	0.5 U	0.5 U	0.5 U
VINYL CHLORIDE	0.5 U	5 U	0.5 U	0.5 U	0.5 U	0.5 U	0.5 U
<b>METHOD 8270D (UG/L)</b>							
1,4-DIOXANE	0.34	4.6	1.2	1.2	1.3 J-	0.1 J	0.1 U
<b>METHOD 8260 SIM (UG/L)</b>							
1,4-DIOXANE	--	--	--	--	--	--	--
<b>METHOD 522 (UG/L)</b>							
1,4-DIOXANE	--	--	--	--	--	--	--

UG/L - micrograms per liter  
J - estimated value  
U - non-detect  
UJ - non-detect



Q4, 2021 (December) Validated Analytical Data  
Navy OU2 Groundwater Sampling, NWIRP Bethpage  
Page 13 of 13

LOCATION SAMPLE ID SAMPLE DATE	RW8-MW01D3 RW8-MW01D3-20211103 11/03/2021	RW8-MW01D3 RW8-MW01D3-20211103-D 11/03/2021	RW8-MW01S RW8-MW01S-20211102 11/02/2021	TT101D TT101D-20211201 12/01/2021	TT101D1 TT101D1-20211201 12/01/2021	TT101D2 TT101D2-20211202 12/02/2021	TT101D2 TT101D2-20211202-D 12/02/2021
<b>VOLATILES (UG/L)</b>							
1,1,1-TRICHLOROETHANE	0.5 U	0.5 U	0.5 U	0.5 U	0.5 U	5 U	0.5 U
1,1,2,2-TETRACHLOROETHANE	0.5 U	0.5 U	0.5 U	0.75 U	0.75 U	7.5 U	0.75 U
1,1,2-TRICHLOROETHANE	0.5 U	0.5 U	0.5 U	0.5 U	0.5 U	5 U	0.62 J
1,1,2-TRICHLOROTRIFLUOROETHANE	0.5 U	0.5 U	0.5 U	14	15.4	25.9	26
1,1-DICHLOROETHANE	0.5 U	0.5 U	0.5 U	0.5 U	0.5 U	5 U	1.2
1,1-DICHLOROETHENE	0.5 U	0.5 U	0.5 U	2.2	5.3	6.7 J	6.6
1,2-DICHLOROBENZENE	0.5 U	0.5 U	0.5 U	0.5 U	0.5 U	5 U	0.5 U
1,2-DICHLOROETHANE	0.5 U	0.5 U	0.5 U	0.5 U	0.5 U	5 U	0.5 U
1,2-DICHLOROPROPANE	0.5 U	0.5 U	0.5 U	0.5 U	0.5 U	5 U	0.5 U
1,3-DICHLOROBENZENE	0.5 U	0.5 U	0.5 U	0.5 U	0.5 U	5 U	0.5 U
1,4-DICHLOROBENZENE	0.5 U	0.5 U	0.5 U	0.5 U	0.5 U	5 U	0.5 U
2-BUTANONE	2.5 U	2.5 U	2.5 U	2.5 U	2.5 U	25 U	2.5 U
2-HEXANONE	2.5 U	2.5 U	2.5 U	2.5 U	2.5 U	25 U	2.5 U
4-METHYL-2-PENTANONE	2.5 U	2.5 U	2.5 U	2.5 U	2.5 U	25 U	2.5 U
ACETONE	2.5 U	2.5 U	4.6 J	5 U	5 U	37.5 U	3.4 J
BENZENE	0.5 U	0.5 U	0.5 U	0.5 U	0.5 U	5 U	0.5 U
BROMODICHLOROMETHANE	0.5 U	0.5 U	0.5 U	0.25 U	0.25 U	2.5 U	0.25 U
BROMOFORM	0.5 U	0.5 U	0.5 U	0.5 U	0.5 U	5 U	0.5 U
BROMOMETHANE	2.5 U	2.5 U	2.5 U	2.5 U	2.5 U	25 U	2.5 U
CARBON DISULFIDE	0.5 U	0.5 U	0.5 U	0.75 U	0.75 U	7.5 U	0.75 U
CARBON TETRACHLORIDE	0.5 U	0.5 U	0.5 U	0.75 U	0.93 J	7.5 U	0.95 J
CHLOROBENZENE	0.5 U	0.5 U	0.5 U	0.5 U	0.5 U	5 U	0.5 U
CHLORODIBROMOMETHANE	0.5 U	0.5 U	0.5 U	0.5 U	0.5 U	5 U	0.5 U
CHLOROETHANE	0.5 U	0.5 U	0.5 U	0.75 U	0.75 U	7.5 U	0.75 U
CHLOROFORM	0.5 U	0.5 U	0.5 U	0.75 U	0.74 J	7.5 U	0.82 J
CHLOROMETHANE	0.5 U	0.5 U	0.5 U	0.75 U	0.75 U	7.5 U	0.75 U
CIS-1,2-DICHLOROETHENE	0.5 U	0.5 U	0.5 U	3	1.8	7.5 U	2.3
CIS-1,3-DICHLOROPROPENE	0.5 U	0.5 U	0.5 U	0.5 U	0.5 U	5 U	0.5 U
ETHYLBENZENE	0.5 U	0.5 U	0.5 U	0.5 U	0.5 U	5 U	0.5 U
ISOPROPYLBENZENE	0.5 U	0.5 U	0.5 U	0.5 U	0.5 U	5 U	0.5 U
M+P-XYLENES	1 U	1 U	1 U	1 U	1 U	10 U	1 U
METHYL CYCLOHEXANE	0.5 U	0.5 U	0.5 U	0.5 U	0.5 U	5 U	0.5 U
METHYL TERT-BUTYL ETHER	0.5 U	0.5 U	0.5 U	0.5 U	0.5 U	5 U	0.5 U
METHYLENE CHLORIDE	0.5 U	0.5 U	0.5 U	0.5 U	0.5 U	5 U	0.5 U
O-XYLENE	0.5 U	0.5 U	0.5 U	0.5 U	0.5 U	5 U	0.5 U
STYRENE	0.5 U	0.5 U	0.5 U	0.5 U	0.5 U	5 U	0.5 U
TETRACHLOROETHENE	0.5 U	0.5 U	0.5 U	0.63 J	0.5 U	2.4 J	2.2
TOLUENE	0.5 U	0.5 U	0.5 U	0.5 U	0.5 U	5 U	0.5 U
TRANS-1,2-DICHLOROETHENE	0.5 U	0.5 U	0.5 U	0.5 U	0.5 U	5 U	0.5 U
TRANS-1,3-DICHLOROPROPENE	0.5 U	0.5 U	0.5 U	0.5 U	0.5 U	5 U	0.5 U
TRICHLOROETHENE	0.5 U	0.5 U	0.5 U	98.1	210	960	1100
TRICHLOROFLUOROMETHANE	0.5 U	0.5 U	0.5 U	0.5 U	0.5 U	5 U	0.5 U
VINYL CHLORIDE	0.5 U	0.5 U	0.5 U	0.5 U	0.5 U	5 U	0.5 U
<b>METHOD 8270D (UG/L)</b>							
1,4-DIOXANE	0.1 U	0.1 U	0.69	5.5	5.7	3	2.4
<b>METHOD 8260 SIM (UG/L)</b>							
1,4-DIOXANE	--	--	--	--	--	--	--
<b>METHOD 522 (UG/L)</b>							
1,4-DIOXANE	--	--	--	--	--	--	--

UG/L - micrograms per liter  
J - estimated value  
U - non-detect  
UU - non-detect