



ARCADIS of New York, Inc.
6723 Towpath Road
P O Box 66
Syracuse
New York 13214-0066
Tel 315 446 9120
Fax 315 449 4111

MEMO

To:

Steven Scharf, P.E., NYSDEC
Katy Murphy, NYSDEC
Renata Ockerby, NYSDOH
Julia Schneider, Cashin Spinelli & Ferretti, LLC
Scott Krall, Bayer
David Paule, Bayer
John Brussel, P.E., ARCADIS

David Kingsley, ARCADIS
Gregory McDermott, ARCADIS
Charles Atanasio, ARCADIS
Michael Perciballi, Posillico
Lee Kaplan, Posillico
Chris Hurst, Posillico
Marc Atamian, Posillico

From:

Andrew Enigk, ARCADIS

Date:

May 21, 2015

ARCADIS Project No.:

B0032305.2013

Subject:

Bayer MaterialScience LLC
125 New South Road, Hicksville, New York
Phase 2 Operable Unit 4 Remedial Activities
May 6, 2015 Bi-Weekly Construction Coordination Meeting Summary
Progress Report #26 (May 4, 2015 – May 19, 2015)

This memorandum summarizes items discussed during the May 6, 2015 weekly construction coordination meeting and work performed from May 4, 2015 through May 19, 2015 in connection with the Phase 2 Operable Unit 4 (OU4) remedial activities at the above-referenced Site. The remedial activities are being implemented by Bayer MaterialScience LLC's (Bayer's) remedial contractor (Posillico) with onsite construction/engineering oversight provided by ARCADIS. The work activities during the reporting period were as observed by Charles Atanasio of ARCADIS.

MEETING ATTENDEES

The following personnel attended the weekly construction coordination meeting:

- Renata Ockerby – NYSDOH (call-in)
- Julia Schneider – Cashin Spinelli & Ferretti, LLC (CSF)(representing the Town of Oyster Bay) (call-in)
- Scott Krall – Bayer (call-in)
- David Paule – Bayer (call-in)
- John Brussel – ARCADIS (call-in)

- Andrew Enigk – ARCADIS (call-in)
- Charles Atanasio – ARCADIS
- Michael Perciballi – Posillico (call-in)
- Chris Hurst – Posillico (call-in)
- Marc Atamian – Posillico (call-in)

HEALTH AND SAFETY MOMENT

Posillico discussed safe lifting practices. When lifting heavy objects, it is a good practice to lift using the legs instead of back and remain square with the object (try not to twist). Two people or heavy machinery (where possible) should be used to lift objects over 40 pounds. Heavy duty work gloves should be worn during lifting to avoid injury to hands especially if handling sharp or jagged objects.

SAFETY/SAFE WORK PRACTICES

No accidents or injuries occurred throughout the entire project. One near-miss was reported early in the project (September 29, 2014) in connection with the unexpected collapse of the east wall of the former Administration Building during removal of an interior mezzanine in preparation for building demolition.

ACTION ITEMS OUTSTANDING FROM PREVIOUS MEETING

There were no outstanding action items from previous meetings.

COMPLETED WORK / WORK-IN-PROGRESS

Work activities performed by Posillico and its subcontractors during this period consisted of the following:

- Completed backfilling of the remaining open excavation areas and installation of the remaining sections of the site-wide soil cover system and demarcation layer below the system. Approximately 3,744 cubic yards (CY) of general fill were imported from Beth Moses Cemetery located in West Babylon, New York for backfilling the excavation areas and completing the 8-inch soil cover system base layer. Approximately 3,212 CY of topsoil were imported from Pinelawn Cemetery located in Farmingdale, New York and placed for the 4-inch final layer of the soil cover system.
- Washed truck tires before trucks exited the Site each trip and cleaned the street with a street sweeper every night after work activities were completed for the day. The soil cover system ultimately extended over the tire washing area (Excavation Area 24C) as Posillico constructed the remaining northern portions of the soil cover system.
- Completed installation of crushed stone in the bottom of rainwater runoff Sumps #3 and #4 as a substitute for general fill/topsoil to improve stormwater infiltration from the sumps. Posillico completed

the installation of erosion control matting along the side slopes of each rainwater runoff sump after placing topsoil.

- Removed the remaining onsite overhead Verizon lines and onsite utility poles.
- Completed hydroseeding of soil cover system areas.
- Continued erosion/sedimentation control measures inspection, maintenance, and documentation.
- Prepared the onsite office trailer for demobilization.
- Continued to perform surveying to document excavation backfill and soil cover system topography.

PROPOSED WORK ACTIVITIES

Posillico's remaining work items at the site are provided below:

- Complete remaining survey activities and provide survey submittals to ARCADIS for review.
- Finalize the waste profile and transport four steel 55-gallon drums containing sediment from the frac tank (previously demobilized) offsite for disposal.
- Continue erosion and sedimentation control measures inspection, maintenance, and documentation until all disturbed areas are stabilized with vegetative cover (minimum 80% density over the entire disturbed area) as specified in the Remedial Design and Remedial Design Addendum.

OPEN DISCUSSION

- Posillico indicated that the remedial construction would be completed during the week of May 18, 2015.
- CSF inquired about the progress of the Environmental Easement (EE). Bayer indicated it and New South Road Realty had not discussed the EE with the New York State Department of Environmental Conservation (NYSDEC) yet.
- CSF and the members of the Garden Civic Association were onsite on two separate occasions during the week of May 4, 2015.
- A construction close-out site meeting was tentatively scheduled for May 28, 2015, subject to confirmation by the NYSDEC.

ATTACHMENTS

- Attachment A: Weekly Site Photos
- Attachment B: Excavation/Backfilling Progress Table
- Attachment C: Soil Cover System Progress Figure

Please notify Mr. Andrew Enigk of ARCADIS at 315.671.9548 within 5 days of receiving this memorandum if you believe that any portion of this summary does not accurately reflect work performed during the reporting period or if additional items should be recorded in this summary. If modifications are made, a revised memorandum will be distributed.

Attachment A

Weekly Site Photos

Weekly Progress Report #26 (May 4, 2015 – May 19, 2015)

Weekly Site Photos



Posillico spreading topsoil across the middle of the property west of the railroad spur.



Posillico stockpiling topsoil near the middle of the Site.

Weekly Progress Report #26 (May 4, 2015 – May 19, 2015)

Weekly Site Photos



Posillico installing erosion blankets at Sump #1.



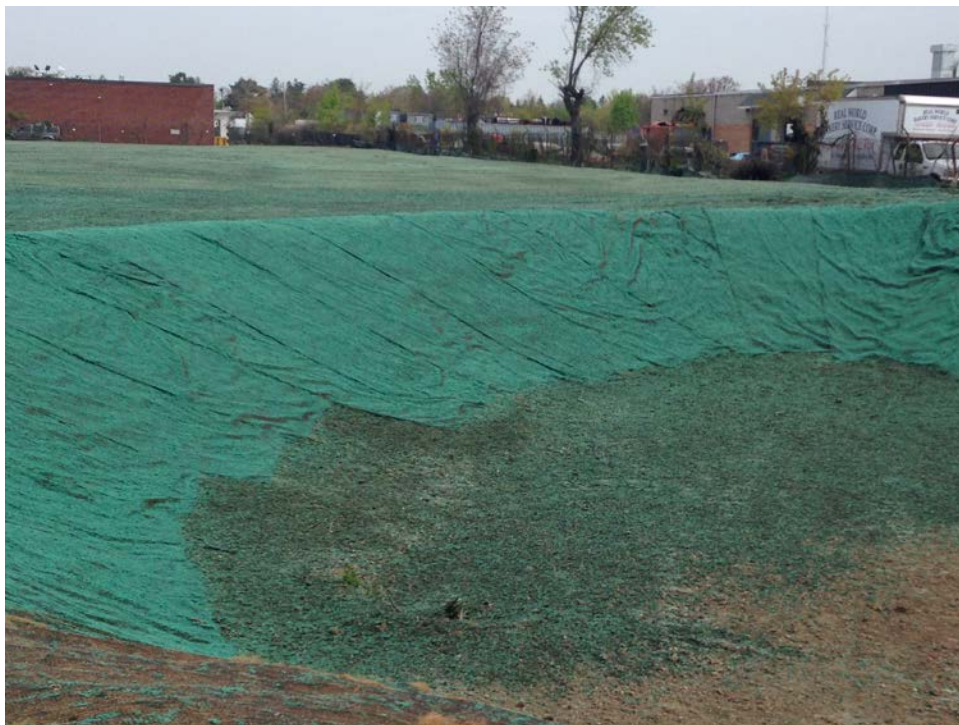
Hydroseed mixture being prepared for application.

Weekly Progress Report #26 (May 4, 2015 – May 19, 2015)

Weekly Site Photos



Posillico hydroseeding the northeastern corner of the Site.



Sump #1 showing the erosion control blanket installed and hydroseeding completed.

Weekly Progress Report #26 (May 4, 2015 – May 19, 2015)

Weekly Site Photos



Canada geese with goslings that hatched onsite during the remedial activities.



Posillico applying topsoil to the northwestern portion of the Site.

Weekly Progress Report #26 (May 4, 2015 – May 19, 2015)

Weekly Site Photos



Posillico spreading general fill after placing the demarcation layer.



Posillico stockpiling general fill in southeastern corner of the Site.

Weekly Progress Report #26 (May 4, 2015 – May 19, 2015)

Weekly Site Photos



Posillico using a hoe ram to puncture holes in the asphalt pavement area before placing the soil cover system.



Posillico removing utility poles at the northern end of the Site.

Weekly Progress Report #26 (May 4, 2015 – May 19, 2015)

Weekly Site Photos



Posillico stockpiling topsoil in the southeastern corner of the Site.



Posillico marking area to place the erosion control blankets in Sump #3.

Weekly Progress Report #26 (May 4, 2015 – May 19, 2015)

Weekly Site Photos



Posillico installing erosion control blanket in Sump #3.



Posillico placing fill along the northwestern limit of the soil cover.

Weekly Progress Report #26 (May 4, 2015 – May 19, 2015)

Weekly Site Photos



Railroad spur showing area with stone remaining to allow access to the eastern side of the site for potential lawn maintenance.



Posillico grading general fill over a demarcation layer across the truck tire wash area/site access road (remaining portion of Excavation Area 24C).

Weekly Progress Report #26 (May 4, 2015 – May 19, 2015)

Weekly Site Photos



Posillico hydroseeding Sump #4 after placing the erosion control blanket.



Hydroseeding completed in areas surrounding Sumps #3 and #4 (southeast corner of Site).

Weekly Progress Report #26 (May 4, 2015 – May 19, 2015)

Weekly Site Photos



Posillico grading the final load of topsoil.



View of site from northwest asphalt parking lot showing the completed soil cover ready for hydroseeding.

Weekly Progress Report #26 (May 4, 2015 – May 19, 2015)

Weekly Site Photos



Hydroseed placed along the northern site boundary (Commerce Place).

Attachment B

Excavation/Backfilling Progress

Table

TABLE 1
EXCAVATION AND BACKFILL TRACKING
UPDATED THROUGH APRIL 24, 2015

PHASE 2 OPERABLE UNIT 4 REMEDIAL ACTION
BAYER MATERIALSCIENCE LLC
125 NEW SOUTH ROAD
HICKSVILLE, NEW YORK

Operation	Design Volume (CY)	Estimated Volumes ¹ (CY)				Percent Completed
		Previous Totals	Current Week Totals	Total to Date	Remaining Volume	
Excavation						
"A" Group Excavation Areas						
PCB-Impacted Soil (>50ppm)	167	167	0	167	0	100%
Non-Hazardous Waste Soil	201	201	0	201	0	100%
Subtotal:	368	368	0	368	0	100%
"B" Group Excavation Areas						
PCB-Impacted Soil (>50ppm)	218	218	0	218	0	100%
Non-Hazardous Waste Soil	183	183	0	183	0	100%
Subtotal:	401	401	0	401	0	100%
"C" Group Excavation Areas						
PCB-Impacted Soil (>50ppm)	227	227	0	227	0	100%
Non-Hazardous Waste Soil	5,538	5,538	0	5,538	0	100%
Concrete	400	0	0	0	0	0%
Subtotal:	6,165	5,765	0	5,765	0	100%
PCB-Impacted Soil (>50ppm) Subtotal:	612	612	0	612	0	100%
Non-Hazardous Waste Soil Subtotal:	5,922	5,922	0	5,922	0	100%
Total:	6,534	6,534	0	6,534	0	100%
Backfill						
Run-of-Bank Gravel						
Phase 1 "A" Group Excavation Areas	5,327	4,849	0	4,849	0	100%
Phase 1 "B" Group Excavation Areas	1,384	1,326	0	1,326	0	100%
Phase 2 "A" Group Excavation Areas	368	321	0	321	0	100%
Phase 2 "B" Group Excavation Areas	401	401	0	401	0	100%
Phase 2 "C" Group Excavation Areas	5,765	5,163	0	5,163	0	100%
Soil Cover System	18,200	11,278	3,744	15,022	0	100%
Subtotal:	31,445	22,938	3,744	26,682	0	100%
Topsoil						
Soil Cover System	7,192	5,822	3,212	9,034	0	100%
Total:	38,637	11,759	6,957	35,717	0	100%

Notes:

1. Excavation and backfill volumes are estimates based on field observations and measurements.
2. CY = Cubic Yards.
3. PCB = polychlorinated biphenyls
4. ppm = parts per million

Attachment C

Soil Cover System Progress

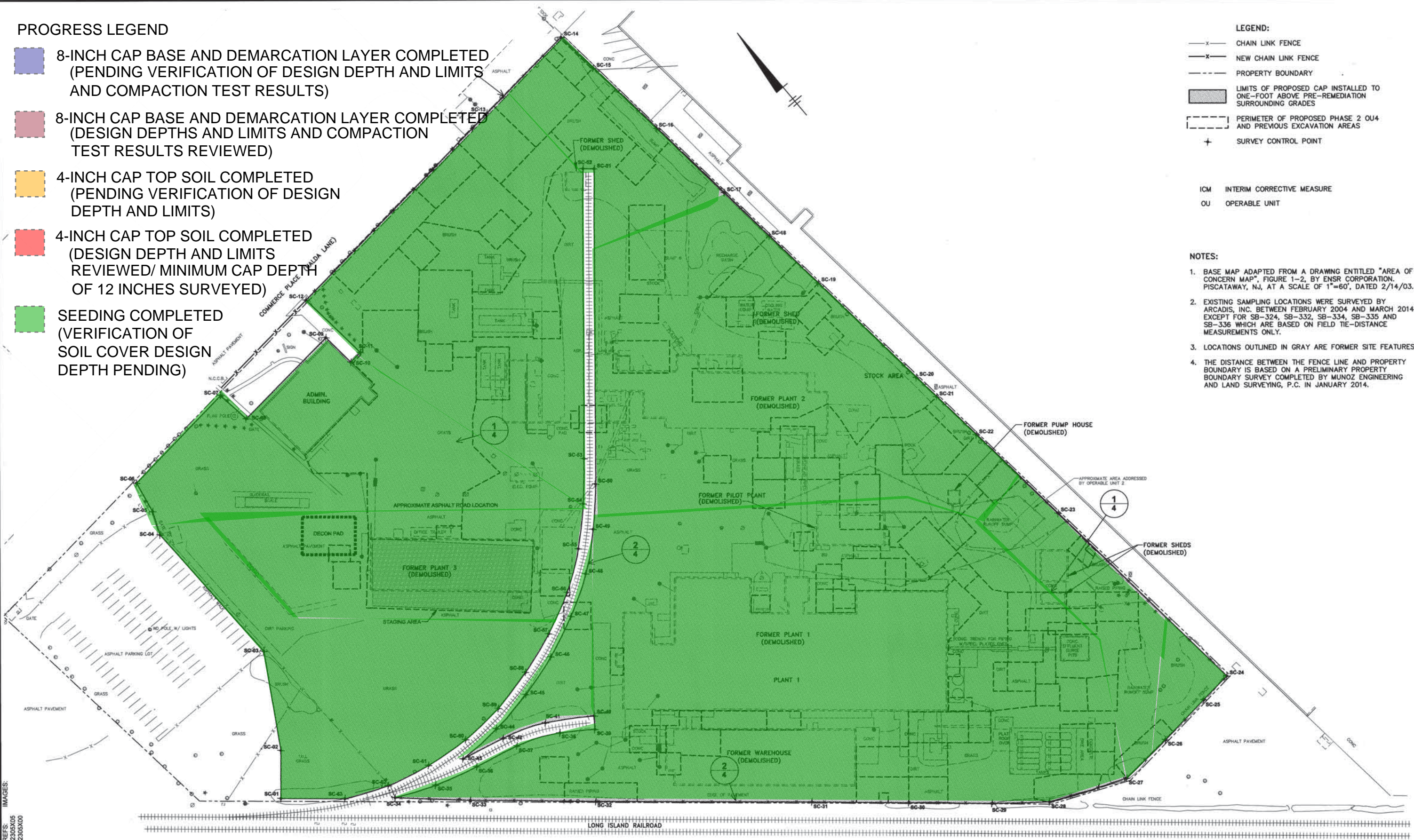
Figure

PROGRESS LEGEND

- 8-INCH CAP BASE AND DEMARCATION LAYER COMPLETED (PENDING VERIFICATION OF DESIGN DEPTH AND LIMITS AND COMPACTION TEST RESULTS)
- 8-INCH CAP BASE AND DEMARCATION LAYER COMPLETED (DESIGN DEPTHS AND LIMITS AND COMPACTION TEST RESULTS REVIEWED)
- 4-INCH CAP TOP SOIL COMPLETED (PENDING VERIFICATION OF DESIGN DEPTH AND LIMITS)
- 4-INCH CAP TOP SOIL COMPLETED (DESIGN DEPTH AND LIMITS REVIEWED/ MINIMUM CAP DEPTH OF 12 INCHES SURVEYED)
- SEEDING COMPLETED (VERIFICATION OF SOIL COVER DESIGN DEPTH PENDING)

- LEGEND:
- CHAIN LINK FENCE
 - NEW CHAIN LINK FENCE
 - PROPERTY BOUNDARY
 - LIMITS OF PROPOSED CAP INSTALLED TO ONE-FOOT ABOVE PRE-REMEDIATION SURROUNDING GRADES
 - PERIMETER OF PROPOSED PHASE 2 OU4 AND PREVIOUS EXCAVATION AREAS
 - SURVEY CONTROL POINT
 - ICM INTERIM CORRECTIVE MEASURE
 - OU OPERABLE UNIT

- NOTES:
- BASE MAP ADAPTED FROM A DRAWING ENTITLED "AREA OF CONCERN MAP", FIGURE 1-2, BY ENSR CORPORATION, PISCATAWAY, NJ, AT A SCALE OF 1"=60', DATED 2/14/03.
 - EXISTING SAMPLING LOCATIONS WERE SURVEYED BY ARCADIS, INC. BETWEEN FEBRUARY 2004 AND MARCH 2014 EXCEPT FOR SB-324, SB-332, SB-334, SB-335 AND SB-336 WHICH ARE BASED ON FIELD TIE-DISTANCE MEASUREMENTS ONLY.
 - LOCATIONS OUTLINED IN GRAY ARE FORMER SITE FEATURES.
 - THE DISTANCE BETWEEN THE FENCE LINE AND PROPERTY BOUNDARY IS BASED ON A PRELIMINARY PROPERTY BOUNDARY SURVEY COMPLETED BY MUNOZ ENGINEERING AND LAND SURVEYING, P.C. IN JANUARY 2014.



THIS BAR REPRESENTS ONE INCH ON THE ORIGINAL DRAWING.

USE TO VERIFY FIGURE REPRODUCTION SCALE

No.	Date	Revisions	By	Ckd

THIS DRAWING IS THE PROPERTY OF THE ARCADIS ENTITY IDENTIFIED IN THE TITLE BLOCK AND MAY NOT BE REUSED OR ALTERED IN WHOLE OR IN PART WITHOUT THE EXPRESS WRITTEN PERMISSION OF SAME.

ARCADIS

ARCADIS OF NEW YORK, INC.

NO ALTERATIONS PERMITTED HEREON EXCEPT AS PROVIDED UNDER SECTION 7209 SUBDIVISION 2 OF THE NEW YORK STATE EDUCATION LAW

BAYER MATERIALSCIENCE LLC • HICKSVILLE, NEW YORK

REMEDIAL DESIGN ADDENDUM

PHASE 2 OU4 SOIL COVER SYSTEM PROGRESS UPDATE

WEEK ENDING 05/22/2015

ARCADIS

8723 TOWPATH ROAD

P.O. BOX 66

SYRACUSE, NEW YORK 13214

TEL. 315.446.9120