

Measurement
Sciences
Corporation

*File
Purcell*

MSC

September 19, 1983

Woodward Clyde Consultants
5120 Butler Pike
Plymouth Meeting, PA 19462
Att: Ms Elly Triegel

Enclosed are the results for the following soil sample we received August 19, 1983 for priority pollutant organic analysis.

SAMPLE I.D.

WC-1
WC-2
WC-3
WC-4

The samples were composited and analyzed by EPA Method 624 and 625 modified for soil samples. The results are given on the enclosed data summary sheet. The only compound detected was acetone at 2 ug/g. No other compounds were detected.

MSC Project #50702

Measurement Sciences Corporation

PRIORITY POLLUTANT DATA SUMMARY SHEET

CLIENT: WCC

LAB NO. 16737
CLIENT I.D.: WC-1 to WC-4 Composite

<u>ACID COMPOUNDS</u>	<u>ug/g</u>
2,4,6-trichlorophenol	ND
p-chloro-m-cresol	
2-chlorophenol	
2,4-dichlorophenol	
2,4-dimethylphenol	
2-nitrophenol	
4-nitrophenol	
2,4-dinitrophenol	
4,6-dinitro-o-cresol	
pentachlorophenol	↓
phenol	ND

<u>BASE/NEUTRAL COMPOUNDS</u>	
acenaphthene	ND
benzidine	
1,2,4-trichlorobenzene	
hexachlorobenzene	
hexachloroethane	
bis(2-chloroethyl)ether	
2-chloronaphthalene	
1,2-dichlorobenzene	
1,3-dichlorobenzene	
1,4-dichlorobenzene	
3,3'-dichlorobenzene	
2,4-dinitrotoluene	
2,6-dinitrotoluene	
1,2-diphenylhydrazine (as azobenzene)	
fluoranthene	↓
4-chlorophenyl phenyl ether	ND

<u>BASE/NEUTRAL COMPOUNDS</u>	<u>ug/g</u>
4-bromophenyl phenyl ether	ND
bis(2-chloroisopropyl)ether	
bis(2-chloroethoxy)methane	
hexachlorobutadiene	
hexachlorocyclopentadiene	
isophorone	
naphthalene	
nitrobenzene	
N-nitrosodimethylamine	
N-nitrosodiphenylamine	
N-nitrosodi-n-propylamine	
bis(2-ethylhexyl)phthalate	
butyl benzyl phthalate	
di-n-butyl phthalate	
di-n-octyl phthalate	
diethyl phthalate	
dimethyl phthalate	
benzo(a)anthracene	
benzo(a)pyrene	
3,4-benzofluoranthene	
benzo(k)fluoranthene	
chrysene	
acenaphthylene	
anthracene	
benzo(ghi)perylene	
fluorene	
phenanthrene	
dibenzo(a,h)anthracene	
indeno(1,2,3-cd)pyrene	↓
pyrene	ND

ND = NOT DETECTED

Detection Limit = 0.2 ug/g

Measurement Sciences Corporation

PRIORITY POLLUTANT DATA SHEET

CLIENT WCC;
 CLIENT I.D. WCI-4 COMPOSITE

LAB NO. 16737

	<u>VOLATILES</u>	<u>ug/L or ug/kg</u>
2V	acrolein	ND
3V	acrylonitrile	
4V	benzene	
6V	carbon tetrachloride	
7V	chlorobenzene	
10V	1,2-dichloroethane	
11V	1,1,1-trichloroethane	
13V	1,1-dichloroethane	
14V	1,1,2-trichloroethane	
15V	1,1,2,2-tetrachloroethane	
16V	chloroethane	
19V	2-chloroethylvinyl ether	
23V	chloroform	
29V	1,1-dichloroethylene	
30V	1,2-trans-dichloroethylene	
32V	1,2-dichloropropane	
33V	1,3-dichloropropylene	
38V	ethylbenzene	
44V	methylene chloride	
45V	methyl chloride	
46V	methyl bromide	
47V	bromoform	
48V	dichlorobromomethane	
49V	trichlorofluoromethane	
50V	dichlorodifluoromethane	
51V	chlorodibromomethane	
85V	tetrachloroethylene	
86V	toluene	
87V	trichloroethylene	✓
88V	vinyl chloride	ND

ND = Not detected
 Def. Limit = 20 ug/kg

Measurement Sciences Corporation

MSC

September 19, 1983

Woodward Clyde Consultants
5120 Butler Pike
Plymouth Meeting, PA

Attention: Elly Triegel

Enclosed are results for soil sample composited and analyzed for RCRA on leach.

SAMPLE I.D. WC - 1
WC - 2
WC - 3
WC - 4

ANALYTICAL PARAMETERS

SAMPLE (mg/L)

Arsenic	<0.005
Cadmium	<0.001
Chromium	<0.02
Mercury	<0.0005
Silver	<0.01
Barium	0.20
Selenium	<0.005
Lead	<0.005

MSC PROJECT NO. 50702

RIC + MASS CHROMATOGRAMS

09/10/93 14:22:00

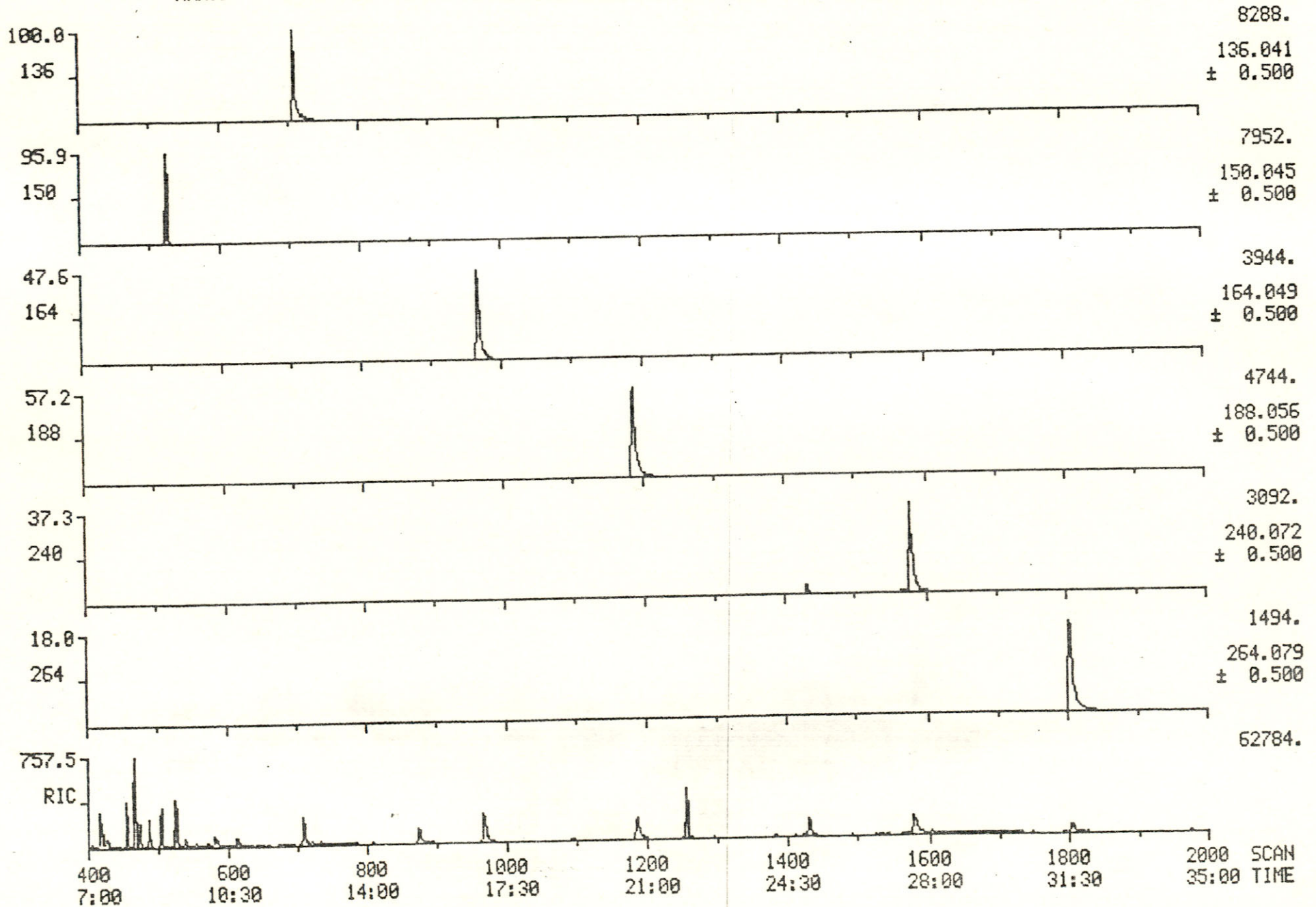
SAMPLE: 1UL OF 1ML CONC., COMPOSITE OF WC-1 TO 4

RANGE: G 1,2300 LABEL: N 4,10.0 QUAN: A 6, 2.0 BASE: U 30, 4

DATA: 16737AB #1

CALI: FC43 #15

SCANS 400 TO 2000



RIC + MASS CHROMATOGRAMS

09/10/83 14:22:00

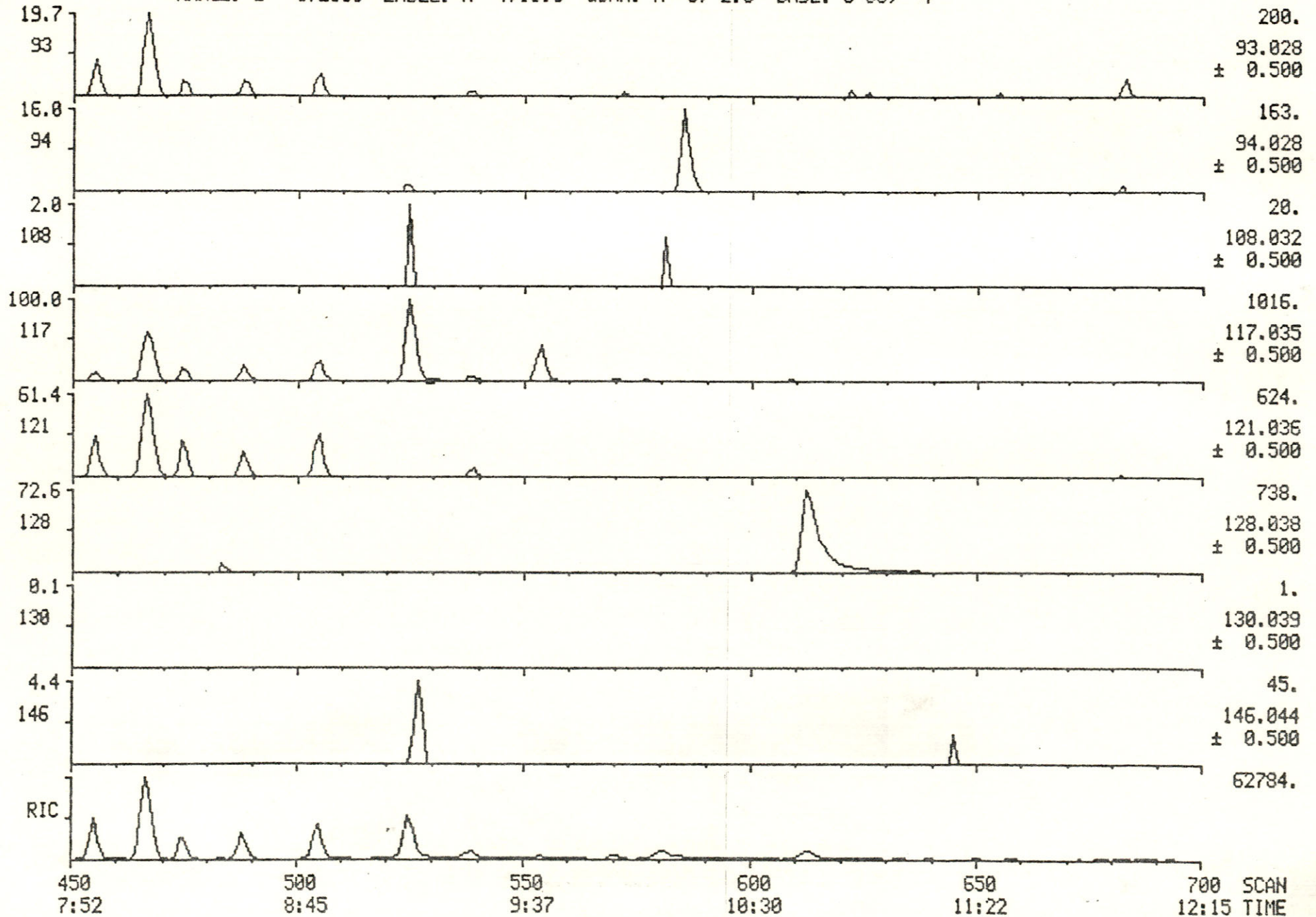
SAMPLE: 1UL OF 1ML CONC., COMPOSITE OF WC-1 TO 4

RANGE: G 1,2300 LABEL: N 4,10.0 QUAN: A 6, 2.0 BASE: U 30, 4

DATA: 16737AB #1

CALI: FC43 #15

SCANS 450 TO 700



RIC + MASS CHROMATOGRAMS

09/10/83 14:22:00

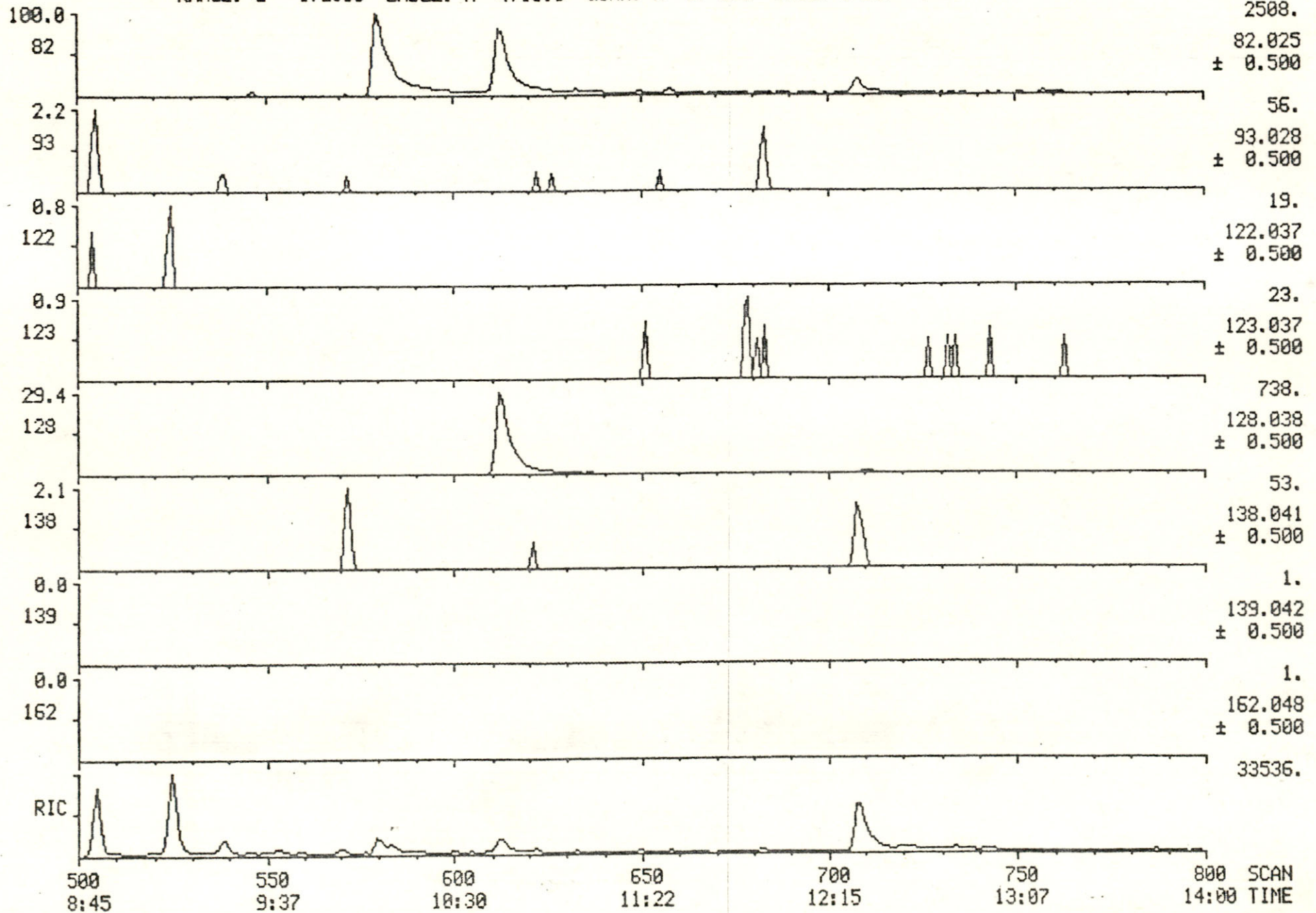
SAMPLE: 1UL OF 1ML CONC., COMPOSITE OF WC-1 TO 4

RANGE: G 1,2300 LABEL: N 4,10.0 QUAN: A 6, 2.0 BASE: U 30, 4

DATA: 16737AB #1

CALI: FC43 #15

SCANS 500 TO 800



RIC + MASS CHROMATOGRAMS

DATA: 16737AB #1

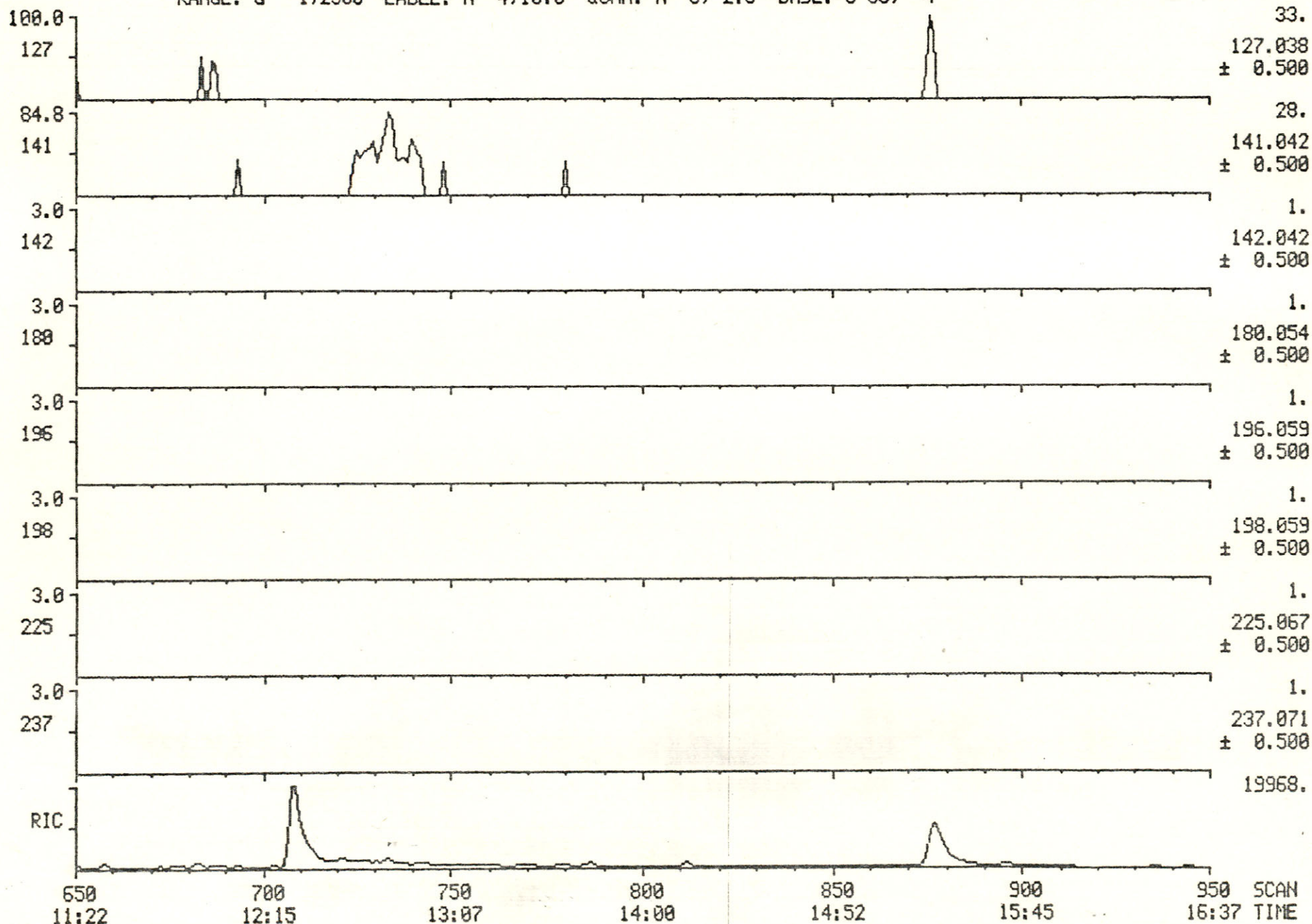
SCANS 650 TO 950

09/10/83 14:22:00

CALI: FC43 #15

SAMPLE: 1UL OF 1ML CONC., COMPOSITE OF WC-1 TO 4

RANGE: G 1,2300 LABEL: N 4,10.0 QUAN: A 6, 2.0 BASE: U 30, 4



RIC + MASS CHROMATOGRAMS

DATA: 16737AB #1

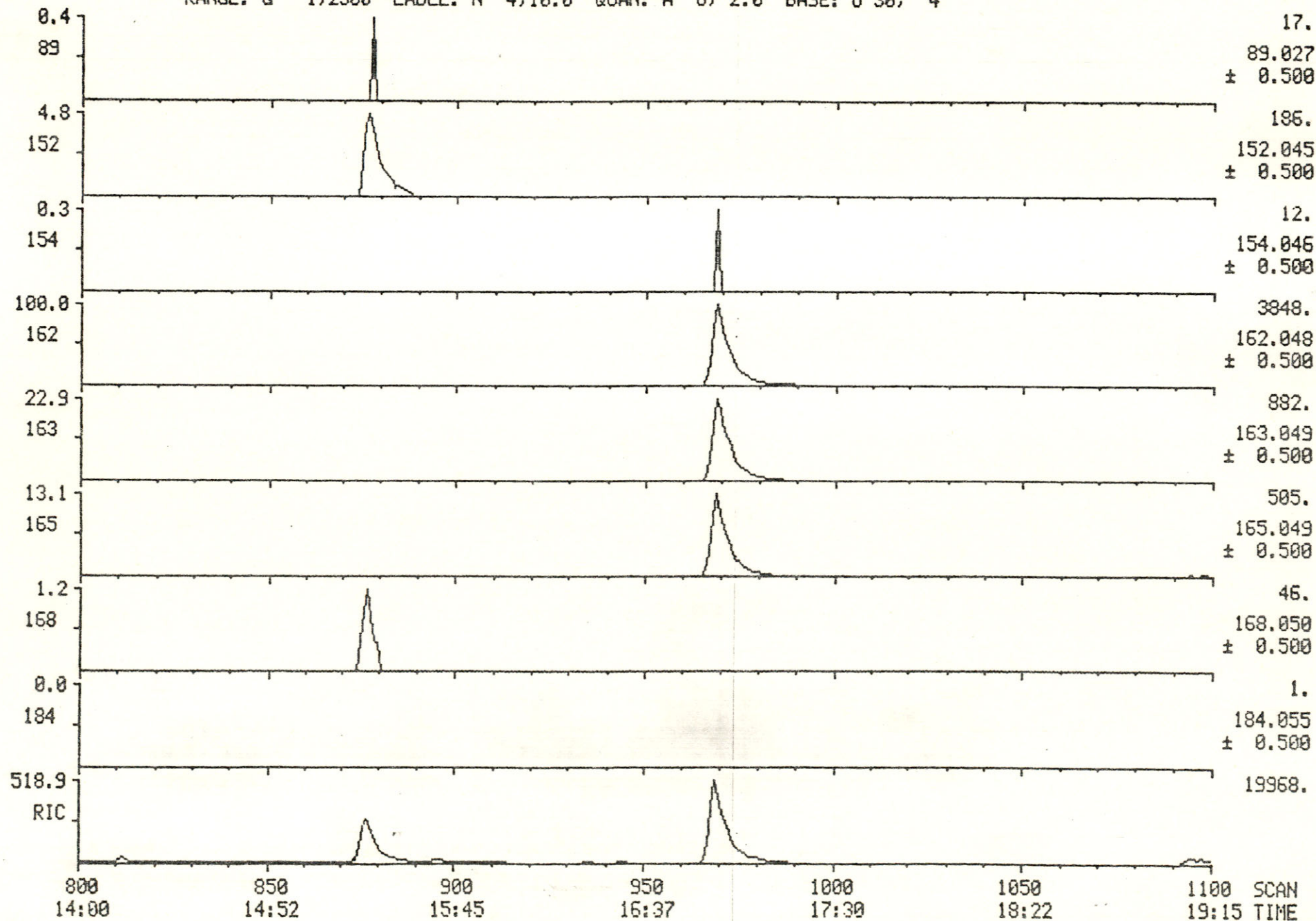
SCANS 800 TO 1100

09/10/83 14:22:00

CALI: FC43 #15

SAMPLE: 1UL OF 1ML CONC., COMPOSITE OF WC-1 TO 4

RANGE: G 1,2300 LABEL: N 4,10.0 QUAN: A 6, 2.0 BASE: U 30, 4



RIC + MASS CHROMATOGRAMS

DATA: 16737AB #1

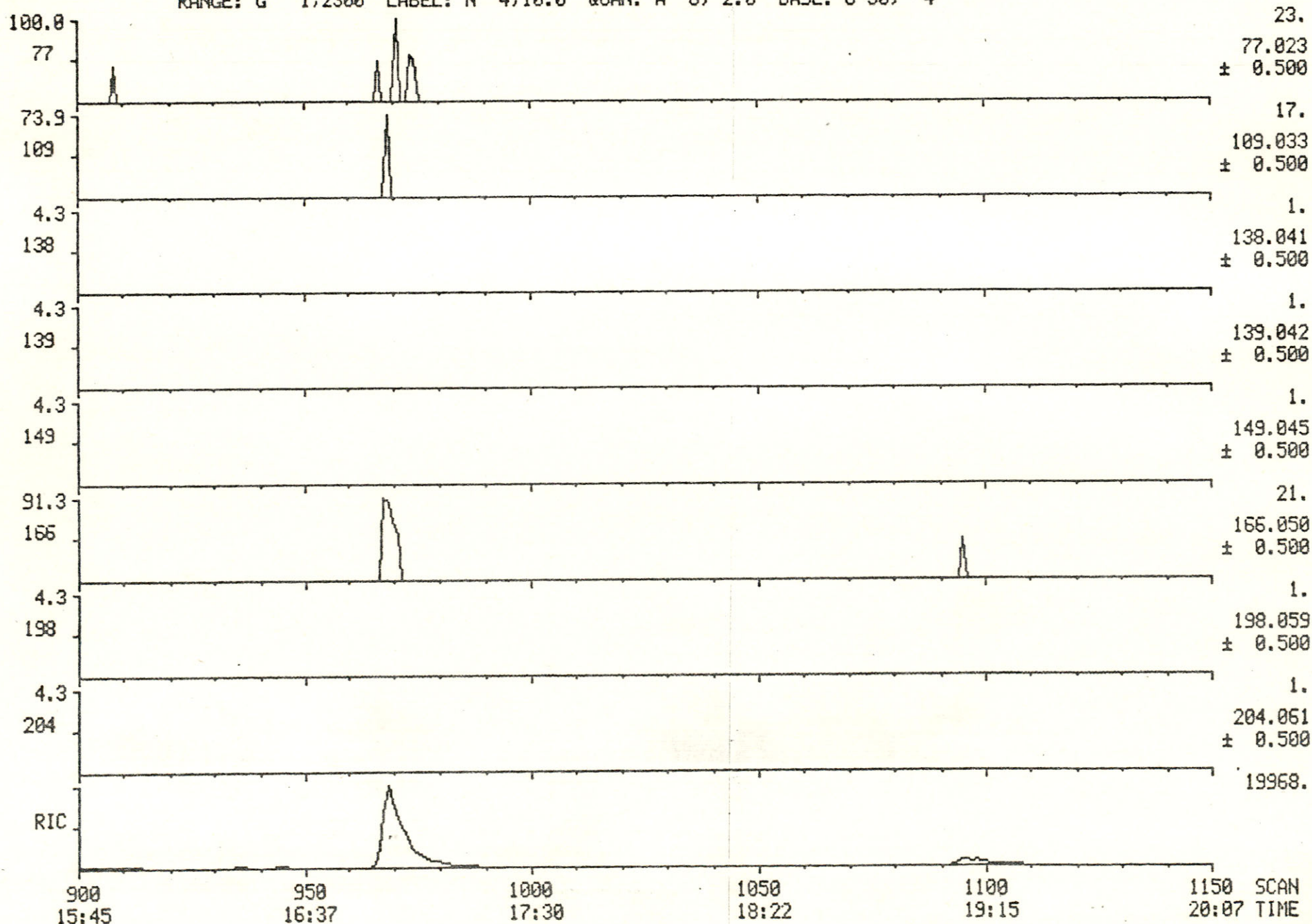
SCANS 900 TO 1150

09/10/83 14:22:00

CALI: FC43 #15

SAMPLE: 1UL OF 1ML CONC., COMPOSITE OF WC-1 TO 4

RANGE: G 1,2300 LABEL: N 4,10.0 QUAN: A 5, 2.0 BASE: U 30, 4



RIC + MASS CHROMATOGRAMS

DATA: 16737AB #1

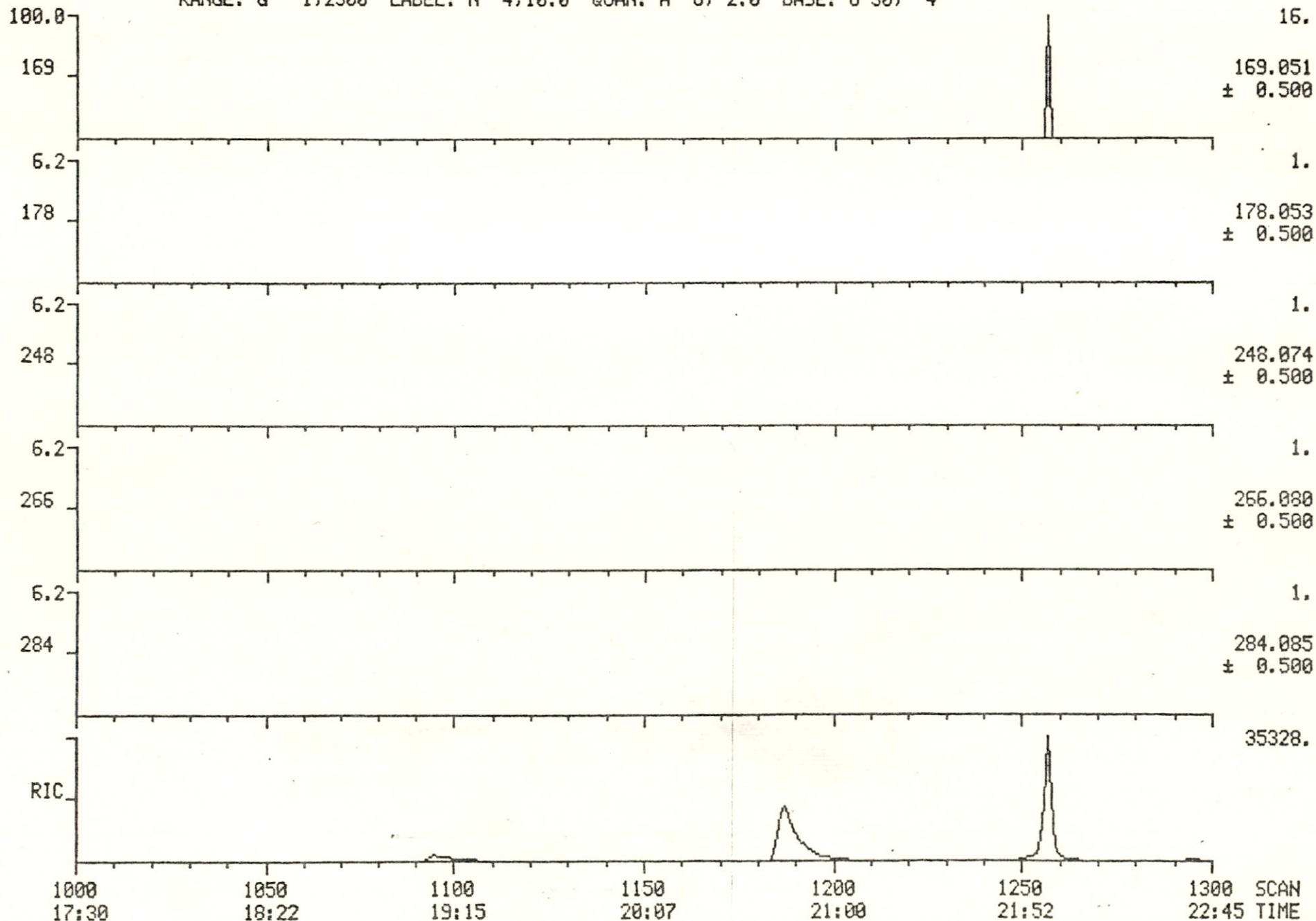
SCANS 1000 TO 1300

09/10/83 14:22:00

CALI: FC43 #15

SAMPLE: 1UL OF 1ML CONC., COMPOSITE OF WC-1 TO 4

RANGE: G 1,2300 LABEL: N 4,10.0 QUAN: A 6, 2.0 BASE: U 30, 4



RIC + MASS CHROMATOGRAMS

09/10/83 14:22:00

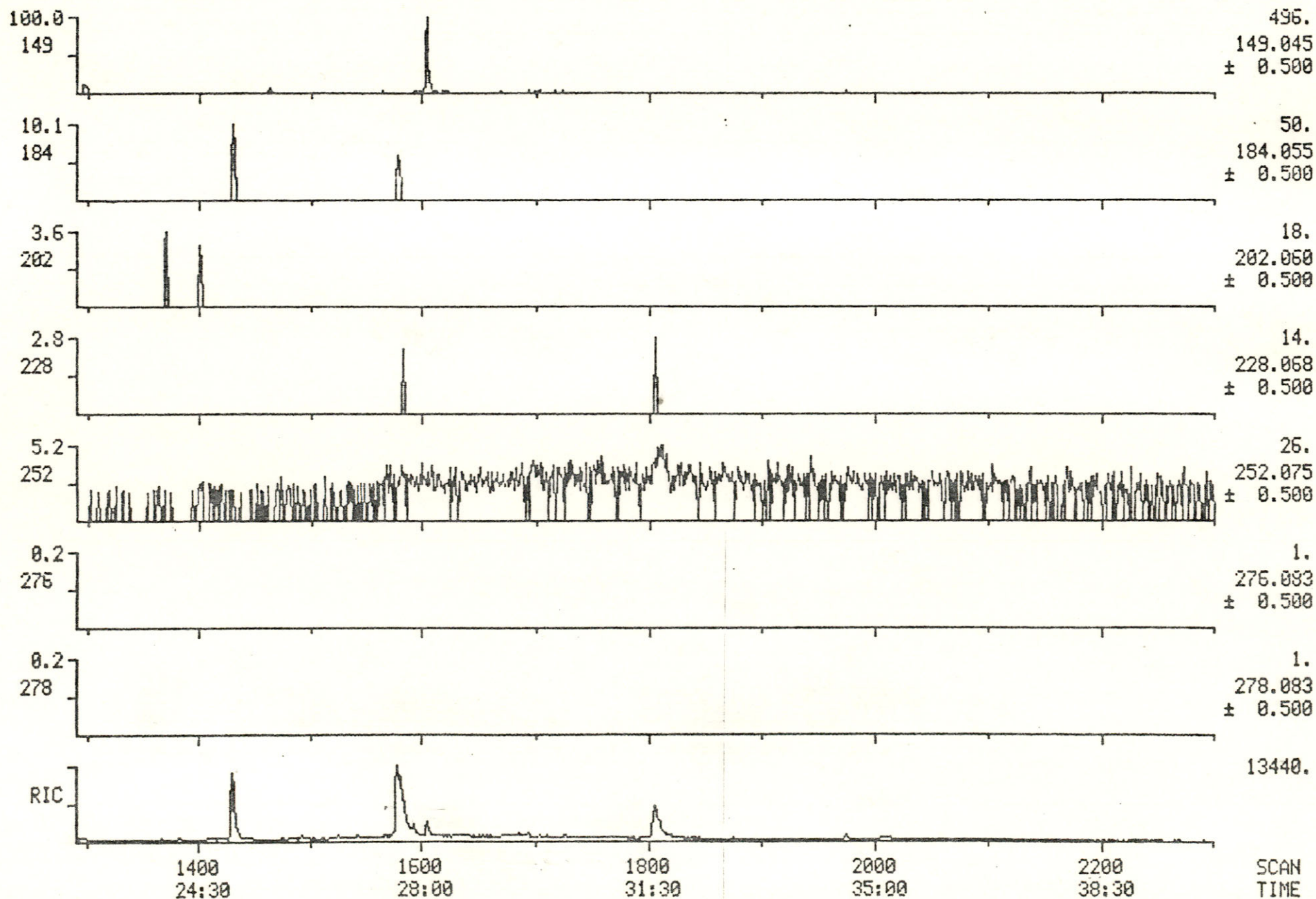
SAMPLE: 1UL OF 1ML CONC., COMPOSITE OF WC-1 TO 4

RANGE: G 1,2300 LABEL: N 4,10.0 QUAN: A 6, 2.0 BASE: U 30, 4

DATA: 16737AB #1

CALI: FC43 #15

SCANS 1290 TO 2300



RIC + MASS CHROMATOGRAMS

DATA: 16737AB #1

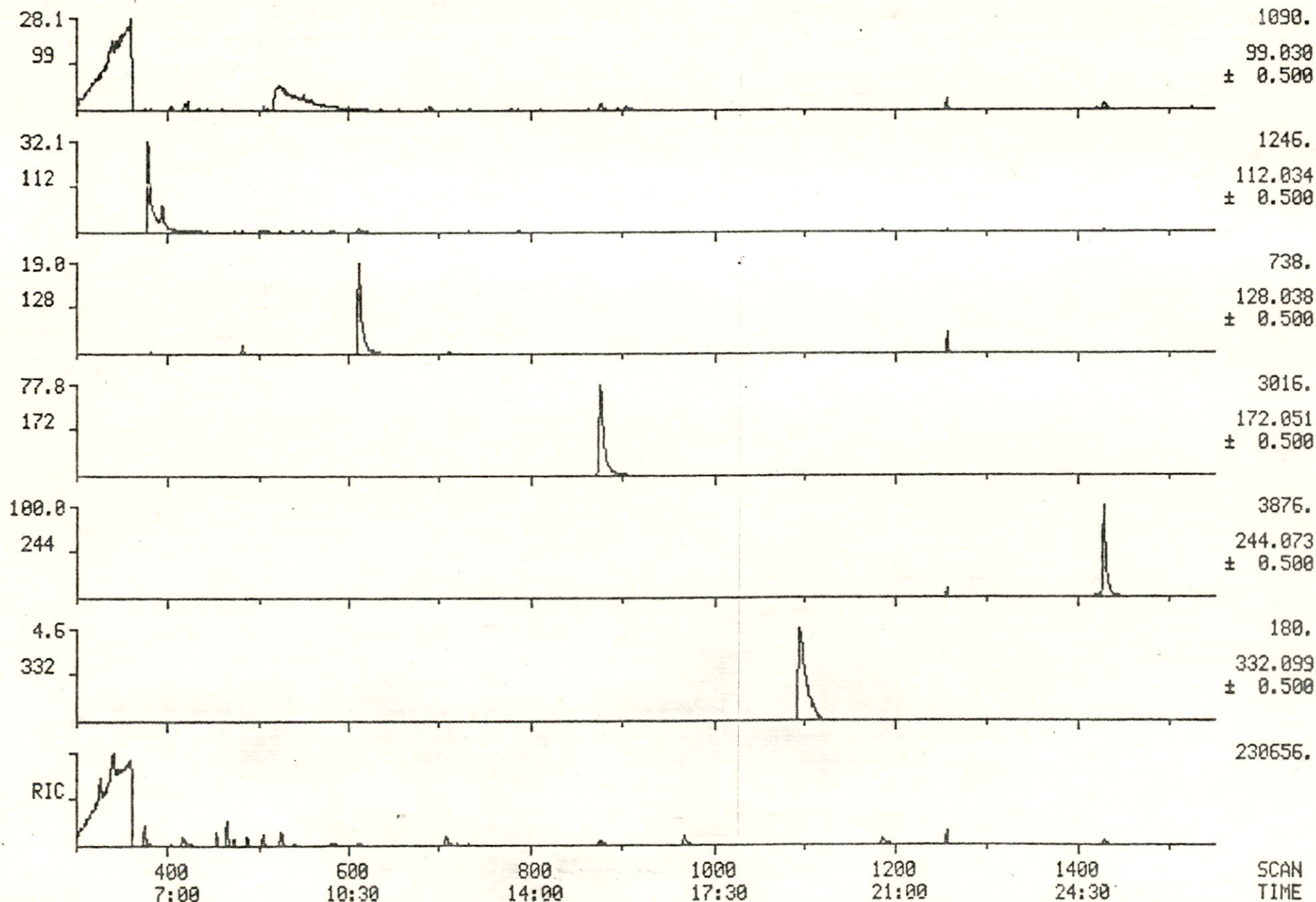
SCANS 300 TO 1550

09/10/93 14:22:00

CALI: FC43 #15

SAMPLE: 1UL OF 1ML CONC., COMPOSITE OF WC-1 TO 4

RANGE: G 1,2300 LABEL: N 4,10.0 QUAN: A 5, 2.0 BASE: U 30, 4

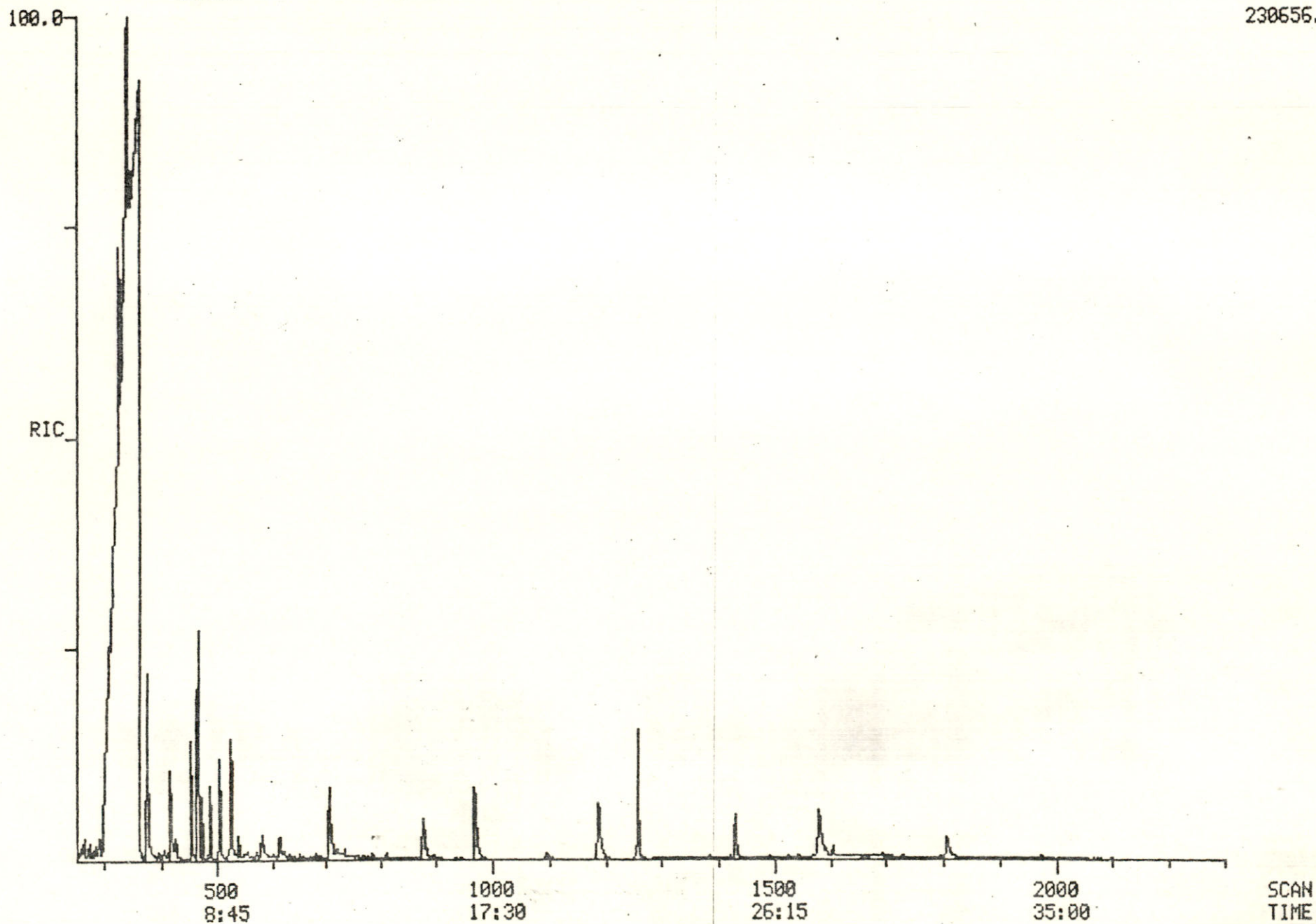


RIC
09/10/83 14:22:00
SAMPLE: 1UL OF 1ML CONC., COMPOSITE OF WC-1 TO 4
RANGE: G 1.2300 LABEL: N 4.10.0 QUAN: A 5, 2.0 BASE: U 30, 4

DATA: 16737AB #1
CALI: FC43 #15

SCANS 250 TO 2300

230656.

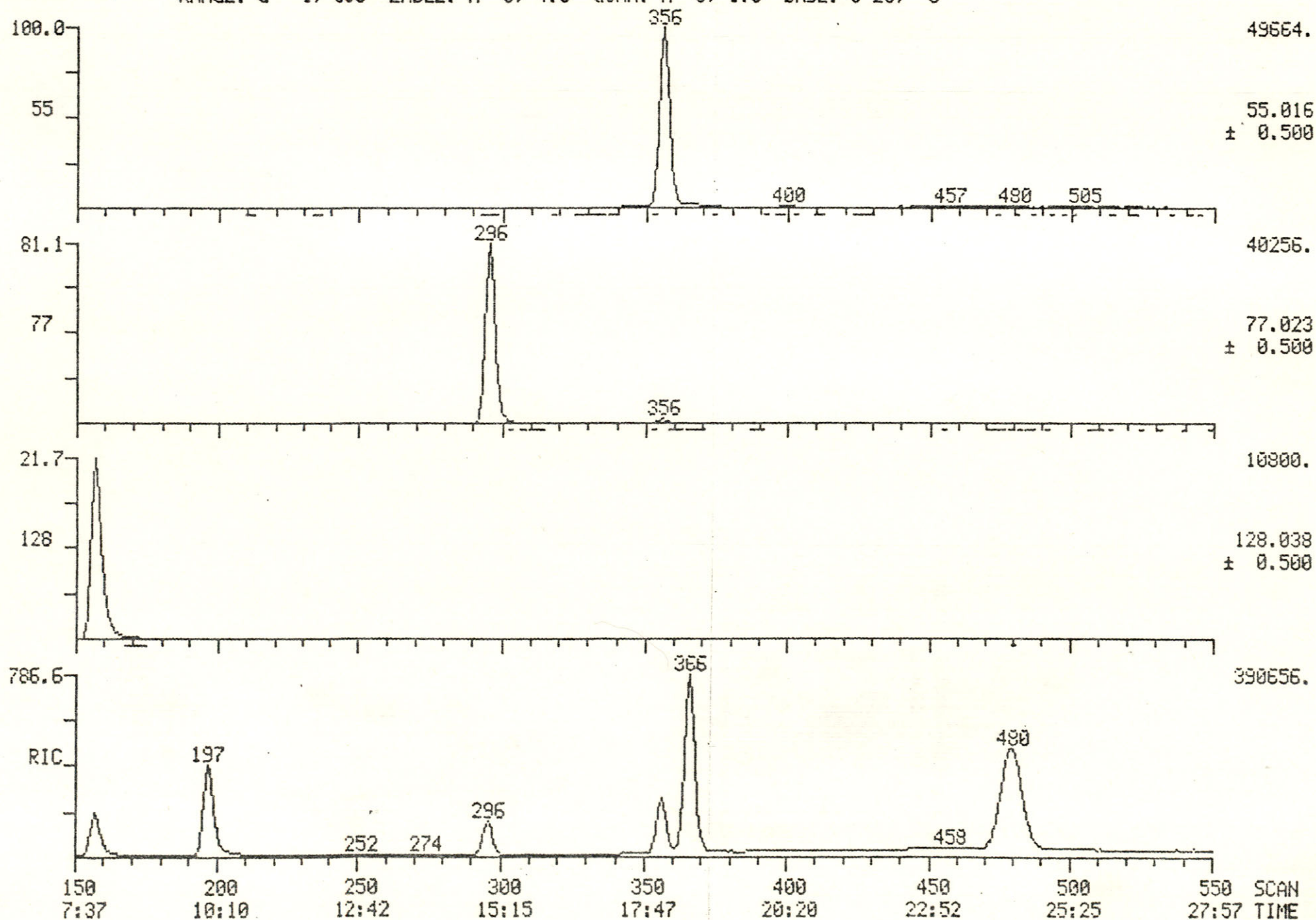


RIC + MASS CHROMATOGRAMS
09/06/93 20:09:00
SAMPLE: 1.03G "COMPOSITE"
RANGE: G 1, 600 LABEL: N 0, 4.0

DATA: 1673701UU #1
CALI: FC43 #1

SCANS 150 TO 550

QUAN: A 0, 1.0 BASE: U 20, 3

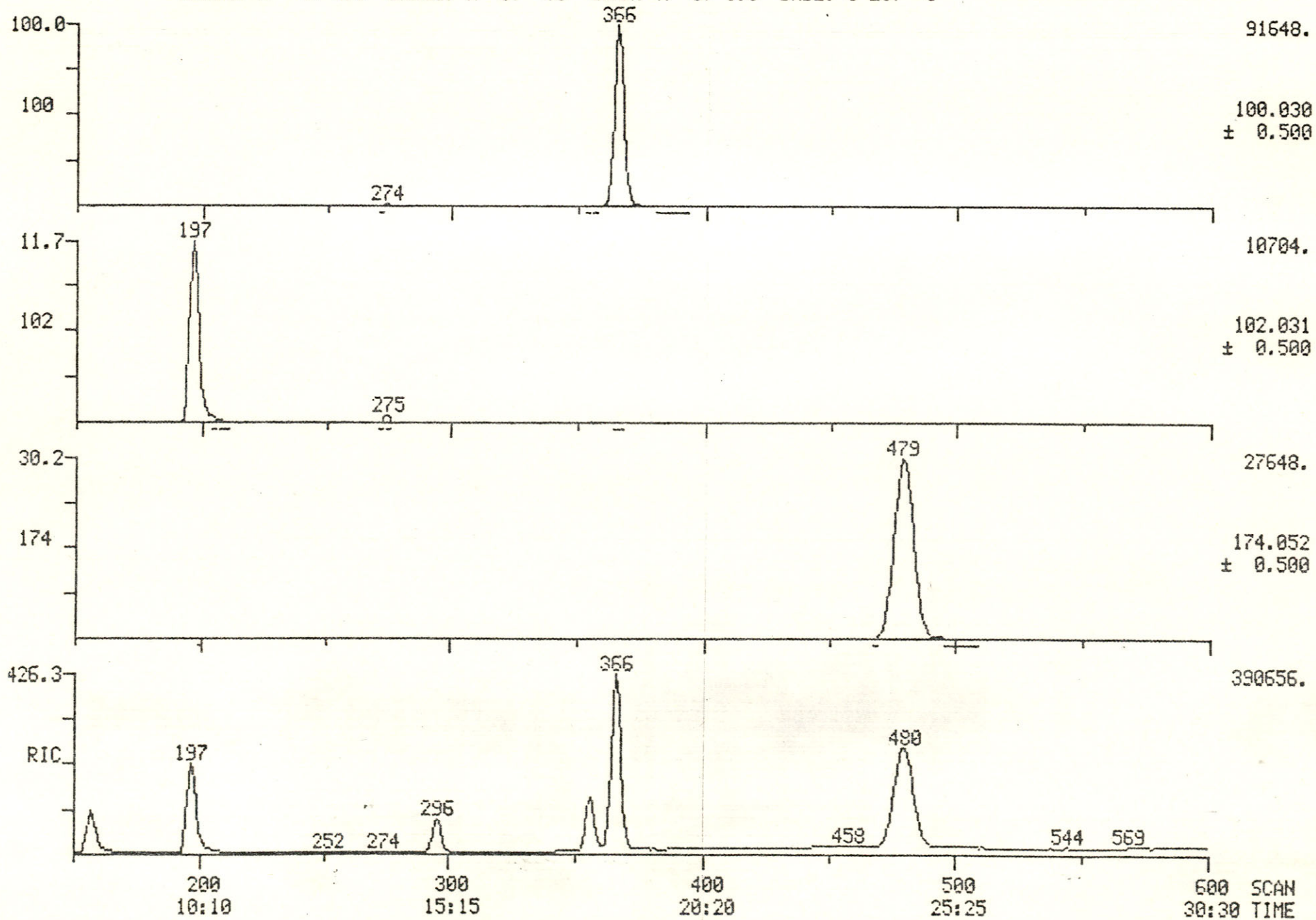


RIC + MASS CHROMATOGRAMS
09/06/83 20:00:00
SAMPLE: 1.03G "COMPOSITE"
RANGE: G 1, 600 LABEL: N 0, 4.0

DATA: 1673701UU #1
CALI: FC43 #1

SCANS 150 TO 600

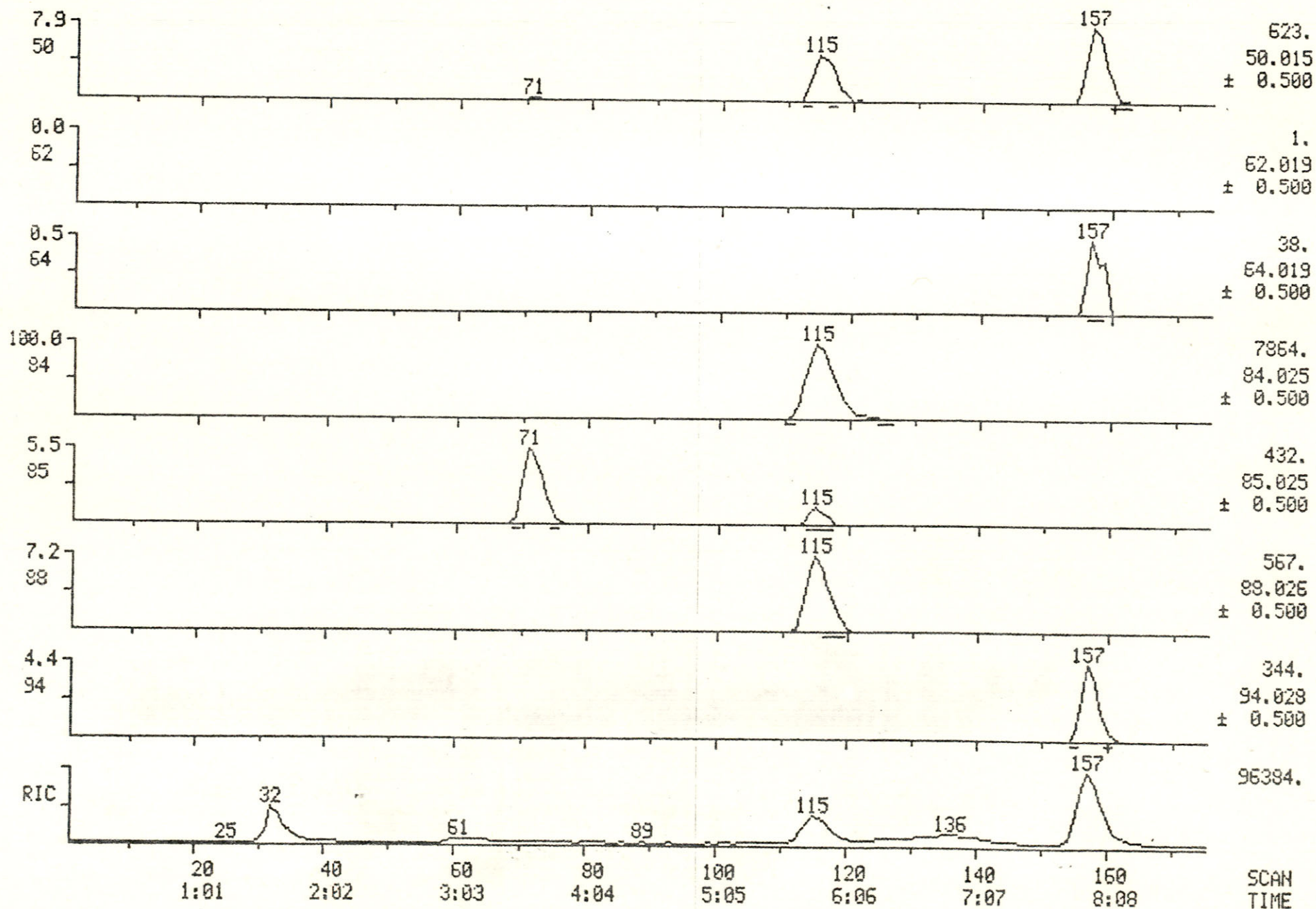
QUAN: A 0, 1.0 BASE: U 20, 3



RIC + MASS CHROMATOGRAMS
 03/06/83 20:09:00
 SAMPLE: 1.03G "COMPOSITE"
 RANGE: G 1, 600 LABEL: N 0, 4.0 QUAN: A 0, 1.0 BASE: U 20, 3

DATA: 1673701UU #1
 CALI: FC43 #1

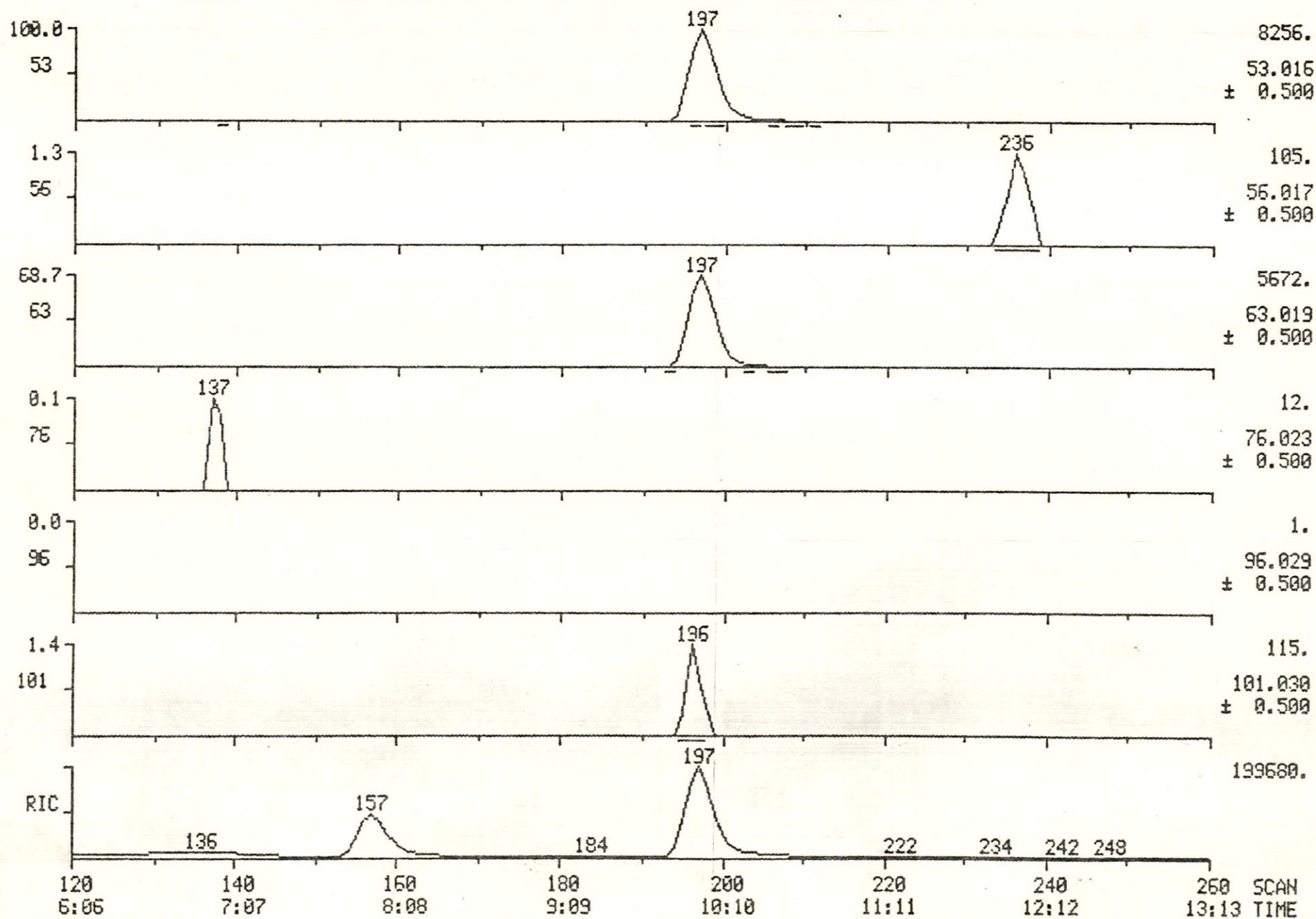
SCANS 1 TO 175



RIC + MASS CHROMATOGRAMS
 03/05/83 20:09:00
 SAMPLE: 1.03G "COMPOSITE"
 RANGE: G 1, 600 LABEL: N 0, 4.0 QUAN: A 0, 1.0 BASE: U 20, 3

DATA: 167370100 #1
 CALI: FC43 #1

SCANS 120 TO 260



RIC + MASS CHROMATOGRAMS

09/06/83 20:08:00

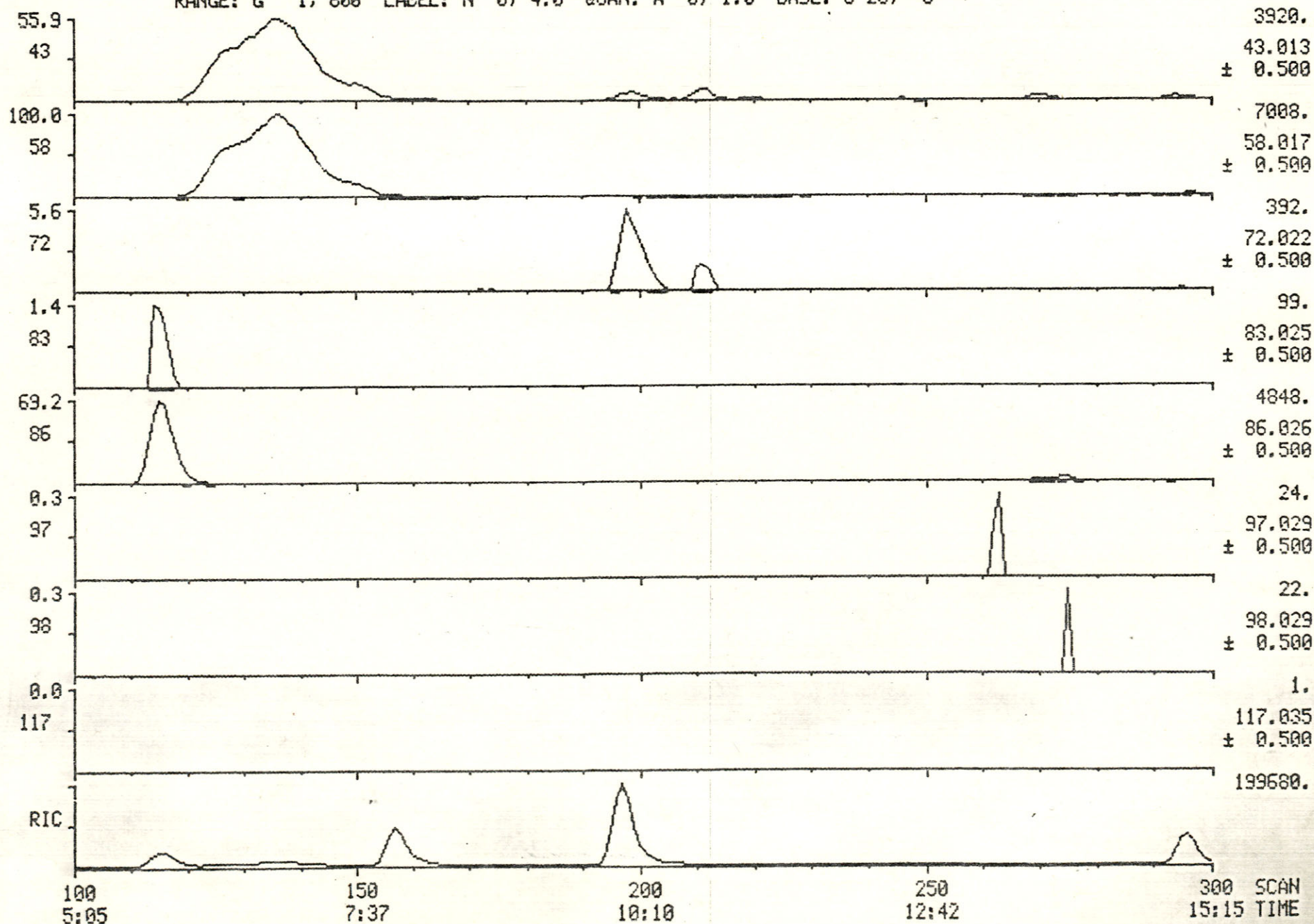
SAMPLE: 1.03G "COMPOSITE"

RANGE: G 1, 600 LABEL: N 0, 4.0 QUAN: A 0, 1.0 BASE: U 20, 3

DATA: 1673701UU #1

CALI: FC43 #1

SCANS 100 TO 300



RIC + MASS CHROMATOGRAMS

03/05/83 20:00:00

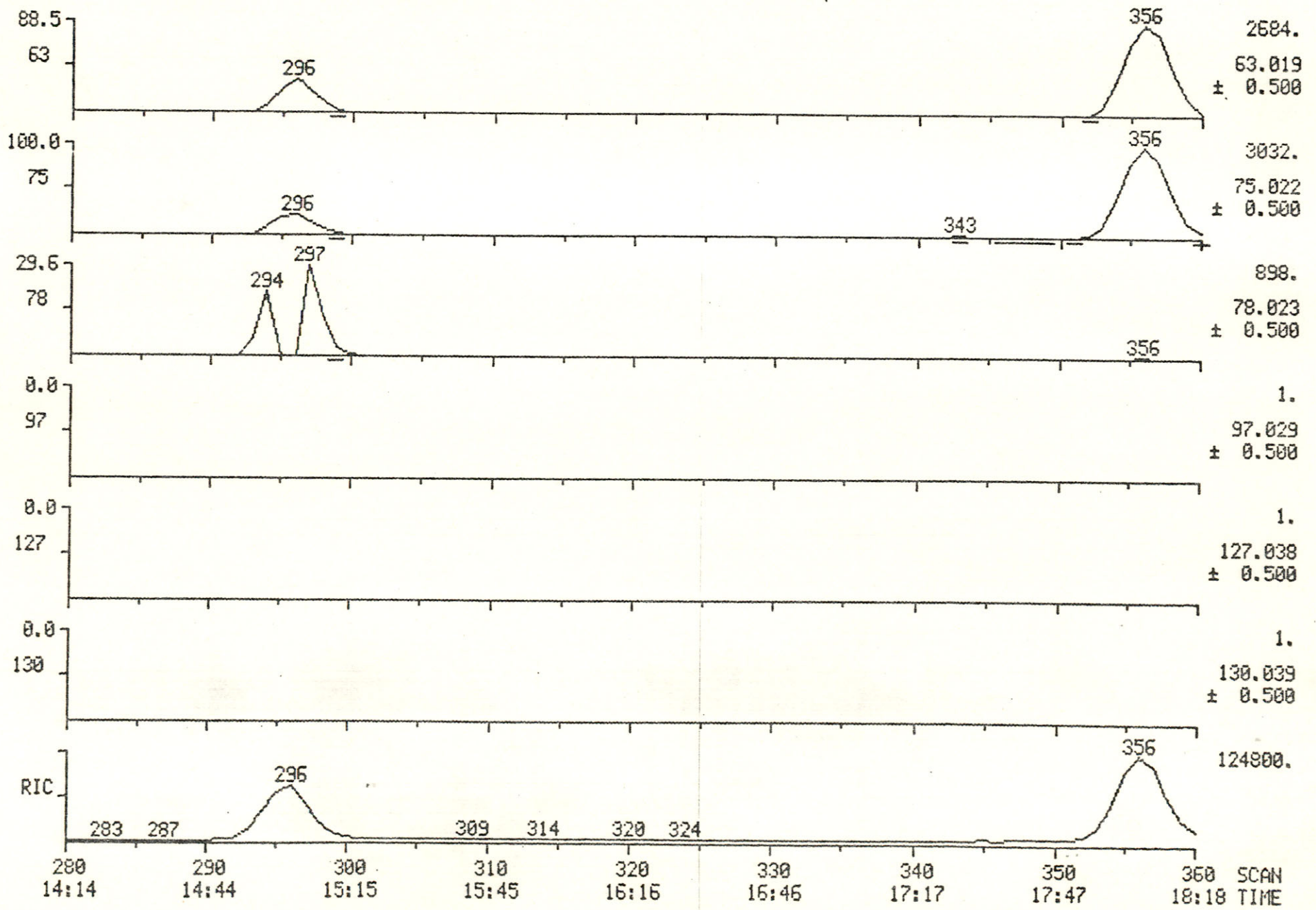
SAMPLE: 1.03G "COMPOSITE"

RANGE: G 1, 600 LABEL: N 0, 4.0 QUAN: A 0, 1.0 BASE: U 20, 3

DATA: 1673701UU #1

CALI: FC43 #1

SCANS 280 TO 360



RIC + MASS CHROMATOGRAMS

09/06/83 20:09:00

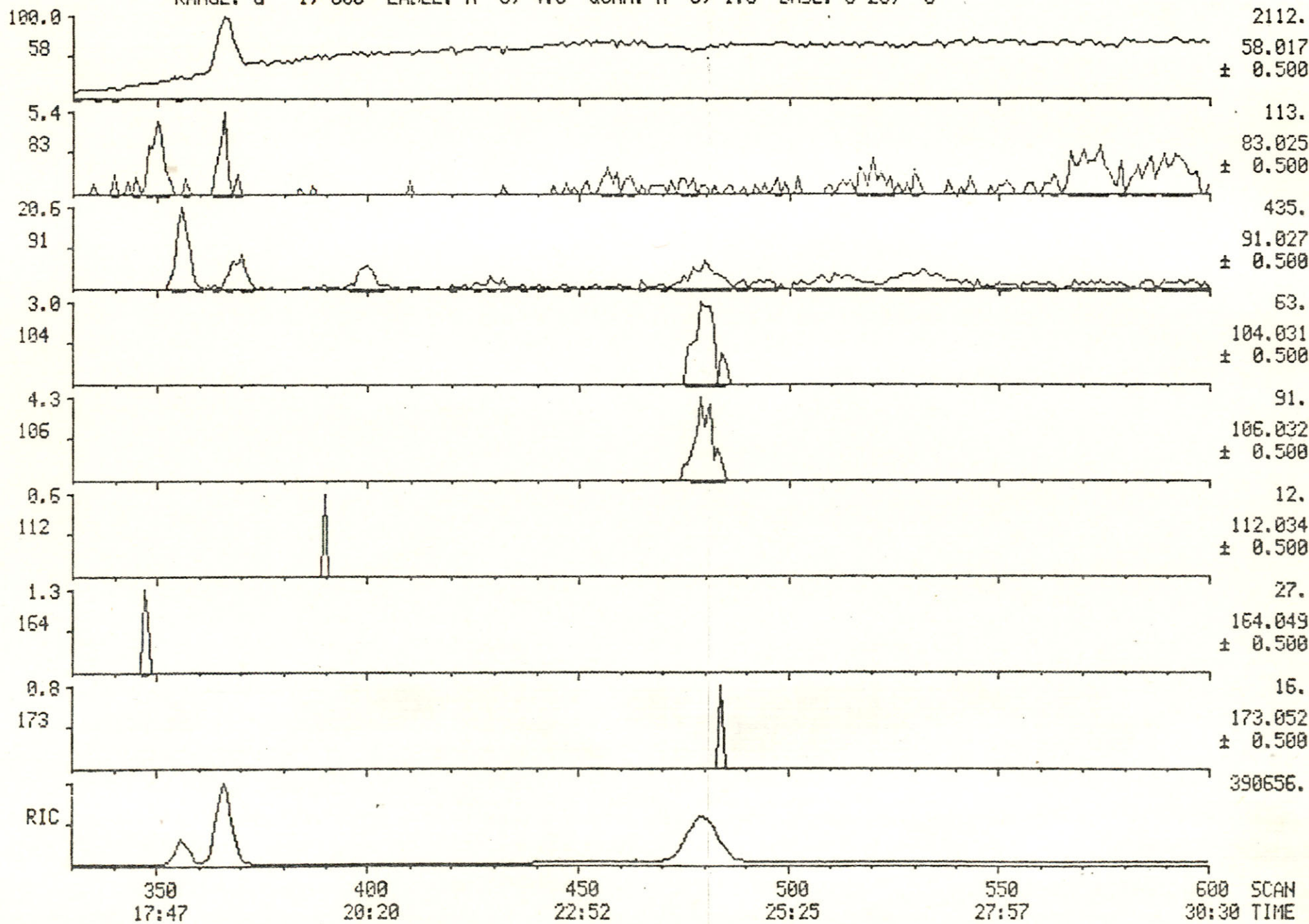
SAMPLE: 1.03G "COMPOSITE"

RANGE: G 1, 600 LABEL: N 0, 4.0 QUAN: A 0, 1.0 BASE: U 20, 3

DATA: 1673701UU #1

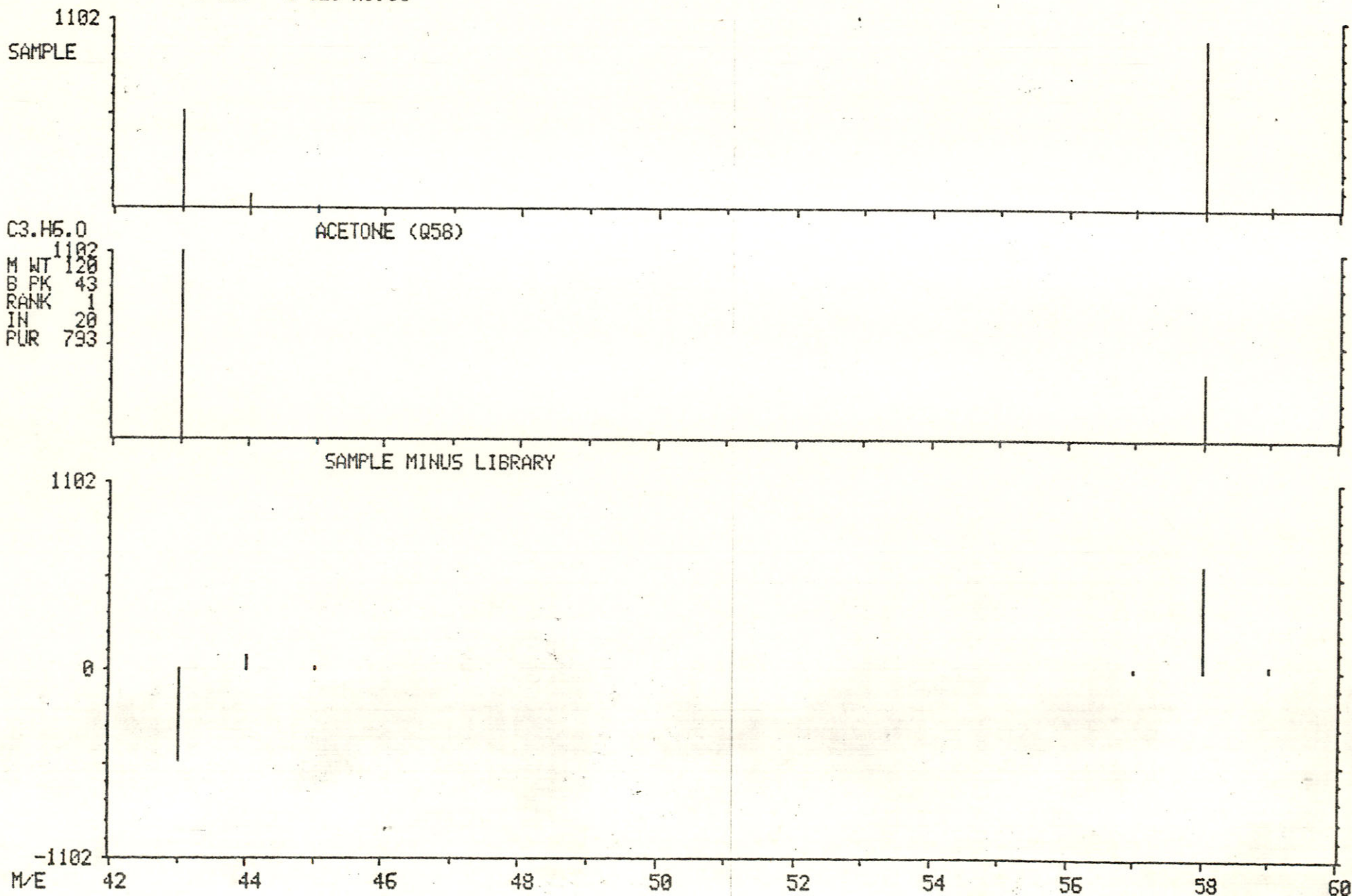
SCANS 330 TO 600

CALI: FC43 #1



LIBRARY SEARCH
09/06/83 20:08:00 + 6:55
SAMPLE: 1.03G "COMPOSITE"
135 - # 125 X1.00

DATA: 167370100 # 136 BASE M/E: 58
CALI: FC43 # 1 RIC: 6063.



RIC
09/06/83 20:08:00
SAMPLE: 1.03G "COMPOSITE"
RANGE: G 1, 600 LABEL: N 0, 4.0 QUAN: A 0, 1.0

DATA: 1673701UV #1
CALI: FC43 #1

SCANS 35 TO 600

BASE: U 20, 3

390656.

