

Contract No.: EP-W-09-002
WA #: 048-RARA-02PE

Region 2 RAC2
Remedial Action Contract

Site Management Plan

Old Roosevelt Field Contamination
Groundwater Area Site – Southern
Plume
Remedial Action
Garden City, New York

April 18, 2013





14 Wall Street, Suite 1702
New York, New York 10005
tel: 212-785-9123
fax: 212-227-1692

April 18, 2014

Ms. Sherrel Henry
Remedial Project Manager
U.S. Environmental Protection Agency
290 Broadway - 20th Floor
New York, NY 10007-1866

PROJECT: RAC 2 Contract No.: EP-W-09-002
Work Assignment No.: 048-RARA-02PE

DOCUMENT CONTROL NO.: 3323-048-02148

SUBJECT: Site Management Plan
Remedial Action
Old Roosevelt Field Contaminated Groundwater Area Site
Southern Plume
Garden City, New York

Dear Ms. Henry:

CDM Federal Programs Corporation (CDM Smith) is pleased to submit the above-referenced document for the Remedial Action at the Old Roosevelt Field Contaminated Groundwater Area Site in the Village of Garden City, New York.

If you have any questions regarding this submittal, please contact me at (732) 590-4638.

Very truly yours,

CDM FEDERAL PROGRAMS CORPORATION

Thomas Mathew, P.E., BCEE
Site Manager

PSO: Ben

cc: H. Eng, EPA Region 2 (letter only)
B. MacDonald, CDM Smith (letter only)
RAC2 Document Control

J. Litwin, CDM Smith (letter only)



Contents

Table of Contents

Section 1 Introduction 1-1

 1.1 Overview..... 1-1

 1.2 Site Background and Setting..... 1-1

 1.2.1 General Site Location and Description 1-1

 1.2.2 Site History 1-2

 1.2.3 Summary of Groundwater Contamination 1-3

 1.3 Scope of Work for the Remedial Action 1-5

 1.4 Purpose and Organization of this Document 1-5

Section 2 Project Organization and Responsibility..... 2-1

 2.1 US Environmental Protection Agency 2-1

 2.2 CDM Smith..... 2-1

 2.3 Arrowhead 2-2

 2.4 New York State Department of Environmental Conservation 2-3

Section 3 Site Management Activities 3-1

 3.1 Pre-Construction Period 3-1

 3.1.1 Site Access Agreements 3-1

 3.1.2 Local Permit Equivalencies and Approvals 3-1

 3.1.3 Local Business and Professional Licensing Requirements..... 3-1

 3.1.4 Pre-Construction and Pre-Work Conferences..... 3-2

 3.2 Construction Period..... 3-2

 3.2.1 On-Site Resident Engineering and Inspection..... 3-2

 3.2.2 Progress Meetings..... 3-2

 3.3 Groundwater Sampling..... 3-3

 3.4 Operations, Maintenance, and Monitoring Period 3-3

 3.5 Demobilization..... 3-3

 3.6 Other General Activities 3-3

 3.6.1 Coordination of Work with Property Owners 3-3

 3.6.2 Coordination of Work with Local Regulatory and Utility Authorities 3-3

 3.6.3 Community Relations 3-4

 3.6.4 Health and Safety 3-4

 3.6.5 Traffic Control and Security..... 3-4

 3.6.6 Environmental Protection and Spill Control..... 3-5

 3.6.7 Waste Management..... 3-5

 3.6.8 Green Remediation 3-6

Section 4 RA Implementation Schedule..... 4-1

Section 5 References..... 5-1

List of Figures

Figure 1-1	Site Map
Figure 1-2	Well Location Map
Figure 2-1	Project Organization
Figure 4-1	Preliminary Remedial Action Construction Schedule

List of Tables

Table 2-1	Project Contact Information
Table 3-1	Contact Information for Property Owners
Table 3-2	Contact Information for Local Regulatory and Utility Authorities

List of Acronyms

bgs	below ground surface
CHMM	Certified Hazardous Materials Manager
CIH	Certified Industrial Hygienist
C.S.P	Certified Safety Professional
CQA	construction quality assurance
DCE	dichloroethene
EPA	U.S. Environmental Protection Agency
gpm	gallons per minute
GWTF	groundwater treatment facility
HASP	Health and Safety Plan
ITP	initial testing program
µg/L	micrograms per liter
MCL	maximum contaminant level
mgd	million gallons per day
NAF	U.S. Naval Air Facility
NAPL	non-aqueous phase liquid
NCSWCD	Nassau County Soil and Water Conservation District
NPL	National Priorities List
NTP	Notice to Proceed
NYCRR	New York Code Rules and Regulations
NYSDEC	New York State Department of Environmental Conservation
O&M	operation and maintenance
PCE	tetrachloroethene
PE	Professional Engineer
QA	quality assurance
QC	quality control
RA	remedial action
RAC	Remedial Action Contract
RD	remedial design
RI/FS	Remedial Investigation/Feasibility Study
ROD	Record of Decision
RPM	remedial project manager
SMP	Site Management Plan
SOW	scope of work
SPDES	State Pollution Discharge Elimination System
SSHO	site safety health officer
TCE	trichloroethene
UFP-QAPP	Uniform Federal Policy Quality Assurance Project Plan
VOC	volatile organic compound

This page intentionally left blank.

Section 1

Section 1

Introduction

1.1 Overview

This Site Management Plan (SMP) was prepared by CDM Federal Programs Corporation (CDM Smith) for the U.S. Environmental Protection Agency (EPA) under the Remedial Action Contract (RAC 2) program, Work Assignment 048-RARA-02PE for the Remedial Action (RA) at the Old Roosevelt Field Contaminated Groundwater Area Site (the site) in Garden City, New York. The plan is intended to partially fulfill the requirements specified under Task 3.1 of the *Negotiated Work Plan*, dated December 17, 2013 for this work assignment.

The EPA September 2007 Record of Decision (ROD) remedy for the site addresses the groundwater contamination at the site by selecting groundwater extraction and ex-situ treatment technologies. The RA at the site is being addressed in two phases, Phase I and Phase II. The Phase I RA, which included installation of three extraction wells in the mall area, and construction of treatment building and treatment system, was completed in December 2011. This SMP addresses Phase II RA activities pertaining to the Final Remedial Design (RD) for the Southern Plume (CDM Smith 2013a), which relates to the groundwater extraction, treatment, and discharge components of the ROD.

1.2 Site Background and Setting

1.2.1 General Site Location and Description

The Old Roosevelt Field Contaminated Groundwater Area site is an area of groundwater contamination within the Village of Garden City in central Nassau County, New York. The site is located on the eastern side of Clinton Road, south of the intersection with Old Country Road (Figure 1-1), and includes the area of the former Roosevelt Field airfield. The former Roosevelt Field airfield area is currently developed as a large retail shopping mall, with a number of restaurants and a movie theater. Several office buildings (including Garden City Plaza) are on the western perimeter of the mall and share parking space with the mall. A thin strip of open space along the eastern side of Clinton Road (known as Hazelhurst Park) serves as designated parkland and a buffer between the residential community on the west side of Clinton Road and the mall complex.

Two recharge basins are directly south of the mall/office area. One basin is known as Pembroke Basin and is on property owned by the mall. The second basin is Nassau County Recharge Basin number 124. Two municipal supply well fields are located south (downgradient) of the former airfield: The Village of Garden City Public Supply Wells 10 and 11, on the eastern side of Clinton Road, and the Village of Hempstead Wellfield, approximately one mile south of the Garden City supply wells.

The Southern Plume portion of the Old Roosevelt Field Contaminated Groundwater Area site is located south of GWP-10 and GWP-11 (Figure 1-2). This area is currently occupied by Stewart Elementary School, located at the corner of Stewart Avenue and Clinton Road, and by parkland

between Clinton Road and Raymond Court. There is also commercial/industrial property located south of Stewart Avenue.

1.2.2 Site History

The site was used for aviation activities from 1911 to 1951. The United States (U.S.) military began using the Hempstead Plains field prior to World War I to train Army and Navy officers and as a training center for military pilots. In 1918, the Army changed the name of the airfield to Roosevelt Field.

After World War I, the U.S. Air Service authorized aviation-related companies to operate from Roosevelt Field, but maintained control until July 1, 1920, at which time the Government sold its buildings and relinquished control of the field. Subsequently, the property owners sold portions along the southern edge of the field and split the remainder of the property into two flying fields. The eastern half continued as Roosevelt Field, and the western half became known as Curtiss Field. Both fields were bought in 1929 by Roosevelt Field, Inc., and the property was once again called Roosevelt Field.

During World War II, Roosevelt Field was again used by both the Army and Navy. The Army used the field to provide airplane and engine mechanics training to Army personnel. As of March 1942, there were 6 steel/concrete hangars, 14 wooden hangars, and several other buildings at Roosevelt Field, which were used to receive, refuel, crate, and ship Army aircraft. In November 1942, the Navy Bureau of Aeronautics established a modification center at Roosevelt Field to install British equipment into U.S. aircraft for the British Royal Navy. The Navy was responsible for aircraft repair and maintenance, equipment installation, preparation and flight delivery of lend-lease aircraft, and metal work required for the installation of British modifications. The facility also performed salvage work of crashed Royal Navy planes. The Navy vacated all but six hangars shortly after the war ended. In August 1946, Roosevelt Field again operated as a commercial airport until it closed in May 1951.

Chlorinated solvents such as tetrachloroethene (PCE) and trichloroethene (TCE) have been widely used for aircraft manufacturing, maintenance, and repair operations since the late 1930s. Several military instruction manuals for aircraft maintenance and repair were issued during this time period which was specifically related to the use of solvents such as TCE for cleaning airplane parts and for de-icing. The types of airplanes designated for solvent use were reportedly present at the site during World War II.

As such, use of chlorinated solvents at the site was very likely to have occurred.

Soon after the airfield closed, industrial plants for precision electronic instruments were under construction at Roosevelt Field and further development was planned. The large Roosevelt Field Shopping Center was constructed at the site and opened in 1957. Three of the old Navy hangars remained standing until sometime after June 1971, with various occupants, including a moving/storage firm, discotheque, amusement center, and bus garage.

Garden City installed two public supply wells, GWP-10 and GWP-11 in 1952, at what had been the southwest corner of the airfield. These two wells were put into service in 1953. Over the subsequent years, several other supply wells and cooling water wells were installed and operated at the former

Roosevelt Field. In the late 1970s and early 1980s, investigations conducted by Nassau County found contaminants TCE and PCE in supply wells GWP-10 and GWP-11. High levels of contamination also were found in cooling water wells at the site. The site was listed on the National Priorities List (NPL) on May 11, 2000.

From June 2005 to December 2006, CDM Smith, the Remedial Action Contractor for EPA, performed a comprehensive remedial investigation (RI) at the site (CDM Smith 2007) to investigate the extent of groundwater contamination and to characterize the site geologic and hydrogeologic settings. During the RI, a total of 8 multiport monitoring wells were installed and two rounds of groundwater samples were collected. Monitoring well locations are shown on the Contract Drawing.

Following the RI, a feasibility study (FS) was completed to evaluate the remediation alternatives to treat the contaminant plume. Based on the findings in the RI and the recommendations in the Final FS, a ROD was signed in September 2007, selecting groundwater extraction and ex-situ treatment technologies to address the site groundwater contamination.

A pre-design investigation was conducted by CDM Smith from May to October 2008 to collect additional information required for the RD. The major elements of the pre-design investigation included installation of three multiport monitoring wells (SVP-9, SVP-10, and SVP-11), one round of sampling of all existing wells and infiltration tests at the Nassau County recharge basin #124. In addition, CDM Smith installed two additional multiport monitoring wells south of SVP-11 in July 2009, because of elevated TCE concentration detected in SVP-11.

Phase I RA construction activities were completed in 2011. These included the installation of extraction wells to achieve hydraulic control of the contaminant plume encroaching upon Garden City supply wells GWP-10 and GWP-11, as well as the construction of a groundwater treatment facility for treatment of extracted groundwater and the construction of a pipeline connecting the extraction wells to the groundwater treatment facility.

As part of the Phase II RA, extraction wells SEW-1S, SEW-1I and SEW-1D were constructed in January and February 2013 to capture a portion of the contaminant plume that has migrated south of the Garden City supply wells. They will transmit approximately 250 gpm of additional flow to the existing groundwater treatment system.

1.2.3 Summary of Groundwater Contamination

A number of Site-related contaminants were identified during the RI (CDM Smith 2007), including PCE, TCE, cis-1,2-dichloroethene (cis-1,2-DCE), 1,1-dichloroethene (1,1-DCE), and carbon tetrachloride. However, cis-1,2-DCE, 1,1-DCE, and carbon tetrachloride were only detected at low levels. The groundwater screening criteria utilized during the RI were developed based on EPA's National Primary Drinking Water Maximum Contaminant Levels (MCLs), New York State Standards and Guidance Values for Class GA groundwater (Human Water Source), and New York State Department of Health (NYSDOH) drinking water standards. The selected screening criteria for the above-mentioned site-related contaminants were all at 5 µg/L.

- **Section 3: Site Management Activities** - Summarizes CDM Smith's plans for addressing the various site management activities required for this project
- **Section 4: Remedial Action Schedule** - Summarizes the tentative schedule for RA completion
- **Section 5: References** – Document the references cited in the SMP

To minimize redundancy, this SMP references the other project plans (i.e., Uniform Federal Policy Quality Assurance Project Plan [UFP-QAPP], Construction Quality Assurance Plan, Health and Safety Plan [HASP]), where appropriate. The SMP also references, where appropriate, the project plan submittals (i.e., to be completed prior to RA construction) of the selected RA Subcontractor, herein identified as Arrowhead Contracting, Inc. (Arrowhead). Such references are for clarification purposes only, since much of the RA work will be performed by Arrowhead and covered in their project plan submittals. These submittals will be completed at a later date.

Section 2

Section 2

Project Organization and Responsibility

The purpose of this section is to define the primary roles and responsibilities of key personnel from each party involved with RA implementation.

The primary roles and responsibilities of key personnel from each party involved with the construction are summarized below. A project organization chart, which illustrates the lines of authority and communication between parties, is included as Figure 2-1. Contact information for the project personnel is included in Table 2-1.

2.1 US Environmental Protection Agency

EPA is the lead agency of this project with ultimate responsibility and authority for all aspects of RA implementation.

Role	Contact	Responsibilities
Remedial Project Manager (RPM)	Sherrel Henry	Responsible for day-to-day technical and financial management of this project. Primary EPA contact for all aspects of work.
Contracting Officer	Debbie Butler	Responsible for overall contractual management of this project, including the associated RA subcontracts, under the RAC 2 contract. Monitors the project for conformance with the signed contract clauses, budget contained in the approved Work Plan for this work assignment and the terms and conditions. Has consent authority for all changes in scope and cost.
Project Officer	Helen Eng	Responsible for overall technical management of this project under the RAC 2 contract. Monitors the project for conformance with the scope of work contained in the EPA SOW and approved Work Plan for this work assignment.

2.2 CDM Smith

CDM Smith is EPA's contractor under the Region 2 RAC 2 contract for this work assignment. CDM Smith is responsible for the implementation of the RA on this project, including the provision of all procurement/subcontract management, project management, resident engineering, and technical support required to successfully complete the work specified in the subcontract documents and the EPA-approved Work Plan.

Role	Contact	Responsibilities
Site Manager	Thomas Mathew, PE	Responsible for day-to-day project management. Primary CDM Smith contact for all aspects of work.

Role	Contact	Responsibilities
Procurement/ Subcontracts Manager	Vernon Wimberley	Responsible for procurement and overall management of the RA subcontracts.
Project Engineer	Muzaffar Rahmani	Responsible for coordinating and/or performing all engineering tasks and tracking work status, schedule, cost on a daily basis under the direction/supervision of the Site Manager.
Construction Supervisor	Benjamin Hammond	Responsible for coordinating and/or performing all resident engineering tasks, construction QA/QC tasks, on a daily basis under the direction/supervision of the Project Engineer/Site Manager. Will perform the Shop and Pre-final/Final Inspections of the groundwater treatment facility (GWTF) upgrades and provide field direction/supervision during the Initial Testing Program for the upgraded treatment system.
Site Safety and Health Officer	Benjamin Hammond	Benjamin Hammond will act as the SSHO and will be responsible for coordinating with the Arrowhead SSHO and verifying that all work is performed in accordance with Arrowhead's approved HASP.
Quality Assurance Coordinator	Jeniffer Oxford, CHMM	Responsible for overseeing QA/QC on this project. Coordinates with the Construction Supervisor regarding the status of construction QA/QC activities. Coordinates and/or performs QA field audits. Verifies that all EPA and CDM Smith QA requirements are met.
Health and Safety Officer	Shawn Oliveira, CIH, C.S.P	Responsible for managing and monitoring CDM Smith's health and safety program at the corporate level. Coordinates with the Health and Safety Coordinator to ensure project conformance with CDM Smith health and safety requirements.
Health and Safety Coordinator	Jeniffer Oxford, CHMM	Responsible for overseeing health and safety on this project. Coordinates with the Construction Supervisor regarding the status of construction health and safety activities. Verifies that all EPA and CDM Smith health and safety requirements are met.

2.3 Arrowhead

Arrowhead Contracting, Inc., the CDM Smith RA subcontractor, is responsible for completing RA construction and O&M in accordance with the subcontract documents under CDM Smith's direction and supervision.

Role	Contact	Responsibilities
Project Manager	Doug Ronk, RG	Provides single point of contact to CDM Smith and is responsible for all fiscal and contractual matters, schedule, and resource allocation. All key project personnel report directly to him. Responsible for resolving performance issues and directing all subcontract, administrative, engineering and field task activity. Approves all changes and technical deliverables.

Role	Contact	Responsibilities
Construction Quality Control Systems Manager	Greg Wallace, RG	Responsible for QC performance, compliance, documentation and reporting associated with the plans, specifications and documents that govern the quality of construction, sampling, operation and maintenance. Develops/oversees QC training/management and coordinates with Site Quality Assurance Coordinator to ensure field level QC protocols are met and enforced. Possesses stop work authority.
Field Construction Superintendent	Joe Cotter	On-site manager responsible for the daily management of subcontractors and project work elements. Responsible for daily documentation of site activities and adherence to project specifications.
Safety and Health Manager	Scott Siegwald, CIH, CSP, CHMM	Corporate Health & Safety Officer responsible for the implementation of and compliance with the Site Health & Safety Plan. Also responsible for ensuring the safety of and training documentation for personnel associated with site field activities. Is superior to and interacts directly with the Site Safety and Health Officer.
Site Safety & Health/QC Officer	TBD	Dedicated, on-site manager responsible for Site Safety compliance, training and enforcement. Reports directly to the Safety & Health Manager.
Treatment System Operator	Joe Cotter	Responsible for the continuous O&M of the groundwater remediation system.

2.4 New York State Department of Environmental Conservation

As per the Superfund Contract for this project, the New York State Department of Environmental Conservation (NYSDEC) is essentially EPA’s “partner” in implementing this RA. NYSDEC is in charge of monitoring and enforcing local environmental regulations.

NYSDEC will participate in various aspects of the project, including meetings, field oversight, and Pre-Final/Final Inspections and have opportunities to review the field project files, upon making advance requests to EPA. NYSDEC will be able to communicate directly with CDM Smith and make recommendations, but will not have the authority to issue directions on EPA’s behalf.

This page intentionally left blank.

Section 3

Section 3

Site Management Activities

3.1 Pre-Construction Period

3.1.1 Site Access Agreements

The required site access agreements will be obtained by EPA to implement the RA. Copies of the access agreements will be maintained at the site in the project files during construction. Contact information for property owners is included in Table 3-1.

3.1.2 Local Permit Equivalencies and Approvals

The permit equivalencies and/or approvals for the RA are summarized below.

New York State Pollution Discharge Elimination System

A New York State Pollution Discharge Elimination System (SPDES) permit equivalent for remediation discharges is required for discharge of the treated groundwater into the subsurface via a recharge basin. As part of the permit equivalent requirements, the effluent water is required to meet the New York State groundwater quality standards and surface water standards. A SPDES permit equivalency was previously obtained for the existing groundwater treatment system. It will be modified to reflect the increase in discharge flow resulting from this phase of the RA. EPA will obtain the modified SPDES permit equivalency.

Erosion and Sediment Control Plan Approval – Nassau County

An Erosion and Sediment Control Plan is required by the Nassau County Soil and Water Conservation District (NCSWCD). An Erosion and Sediment Control Plan will be submitted to the agency to demonstrate that the construction plans comply with State requirements. The plans submitted should demonstrate that construction activities will not affect runoff and will describe stabilization methods during/after construction activities. The Erosion and Sediment Control Plan used for the previous RA construction will be revised by Arrowhead based on the work described in the Southern Plume RD, and submitted to NCSWCD. The plan will be reviewed and approved by CDM Smith prior to submittal to NCSWCD.

Discharge of Treated Water Approval – Nassau County

The treated water will continue to be discharged to the local Nassau County Recharge Basin No. 124 via a stormwater manhole located in front of Garden City Well Field #10 and 11. Approval for the increased flow of treated water to Recharge Basin No. 124 will be obtained by EPA from Nassau County.

3.1.3 Local Business and Professional Licensing Requirements

Arrowhead is required to meet all local licensing requirements applicable to implementing the RA. Such requirements include the items below.

- Excess soil from trench excavation

Operations, Maintenance, and Monitoring

- Spent particulate filters
- Spent lubricants and equipment parts
- Used personnel protective equipment
- Used sampling equipment, materials, and supplies
- Spent acid from air-stripper cleaning
- Purge water from groundwater sampling

3.6.8 Green Remediation

Green remediation practices will be implemented by Arrowhead in accordance with EPA Region 2's "Clean & Green" policy. The use of renewable energy and the efficient reuse of earthen materials are examples of green remediation implementation that will be incorporated. Arrowhead will be required to supply documentation and records supporting the green remediation practices implemented (e.g., utility receipts). CDM Smith will be responsible for tracking and reviewing the documentation supplied by Arrowhead. In addition, CDM Smith will perform inspections as part of the resident engineering services to document the implemented practices (e.g., confirmation that chipped vegetation from clearing and grubbing is used to the maximum extent, that existing asphalt is recycled during site restoration, that vehicles have been retrofitted with diesel particulate filters, etc.). CDM Smith will report records of green-related activities performed by CDM Smith and Arrowhead to EPA in its monthly progress reports or as requested by the EPA RPM.

Section 4

Section 4

RA Implementation Schedule

A preliminary project schedule for the Phase II RA is shown on Figure 4-1. A detailed construction schedule will be prepared by Arrowhead, and approved by CDM Smith.

Section 5

Section 5

References

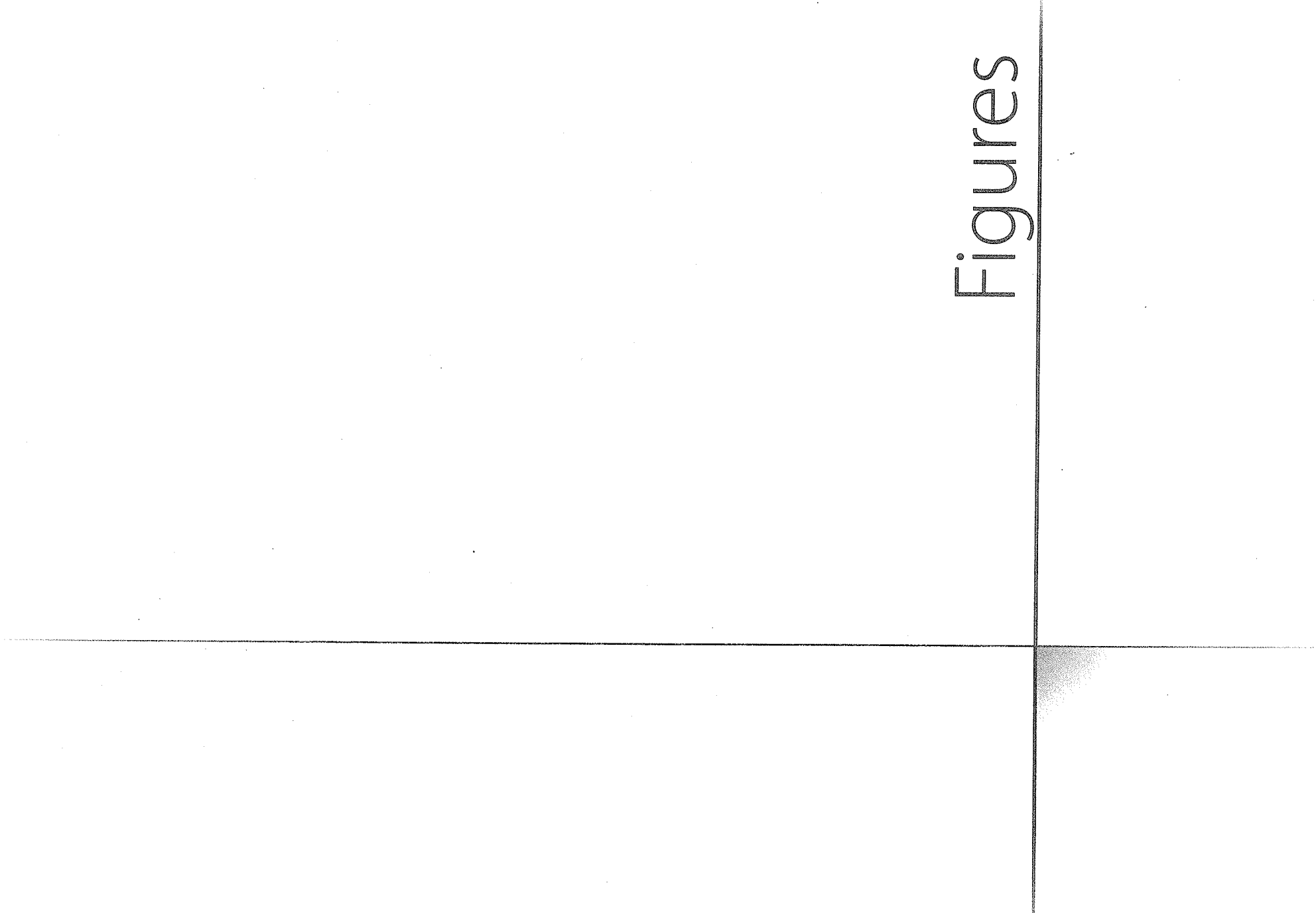
CDM Smith. 2007. Final Remedial Investigation Report, Old Roosevelt Field Contaminated Groundwater Area Site. July 24.

_____. 2013a. Final Remedial Design, Old Roosevelt Field Contaminated Groundwater Area Site - Southern Plume. June.

_____. 2013b. Remedial Action Annual Progress Report – Year 1, Old Roosevelt Field Contaminated Groundwater Area Site. May 24.

EPA. 2007. Record of Decision, Old Roosevelt Field Contaminated Groundwater Area Site. September 28.

Figures





adapted from NY SDEC Interactive Mapping Gateway: <http://www.nygis.state.ny.us/gateway/index.html>

**CDM
Smith**



**Figure 1-1
Site Map**

Old Roosevelt Field Contaminated Groundwater Area Site
Garden City, New York

**Figure 2-1
Project Organization
Site Management Plan
Old Roosevelt Field Contaminated Groundwater Area Site
Garden City, New York**

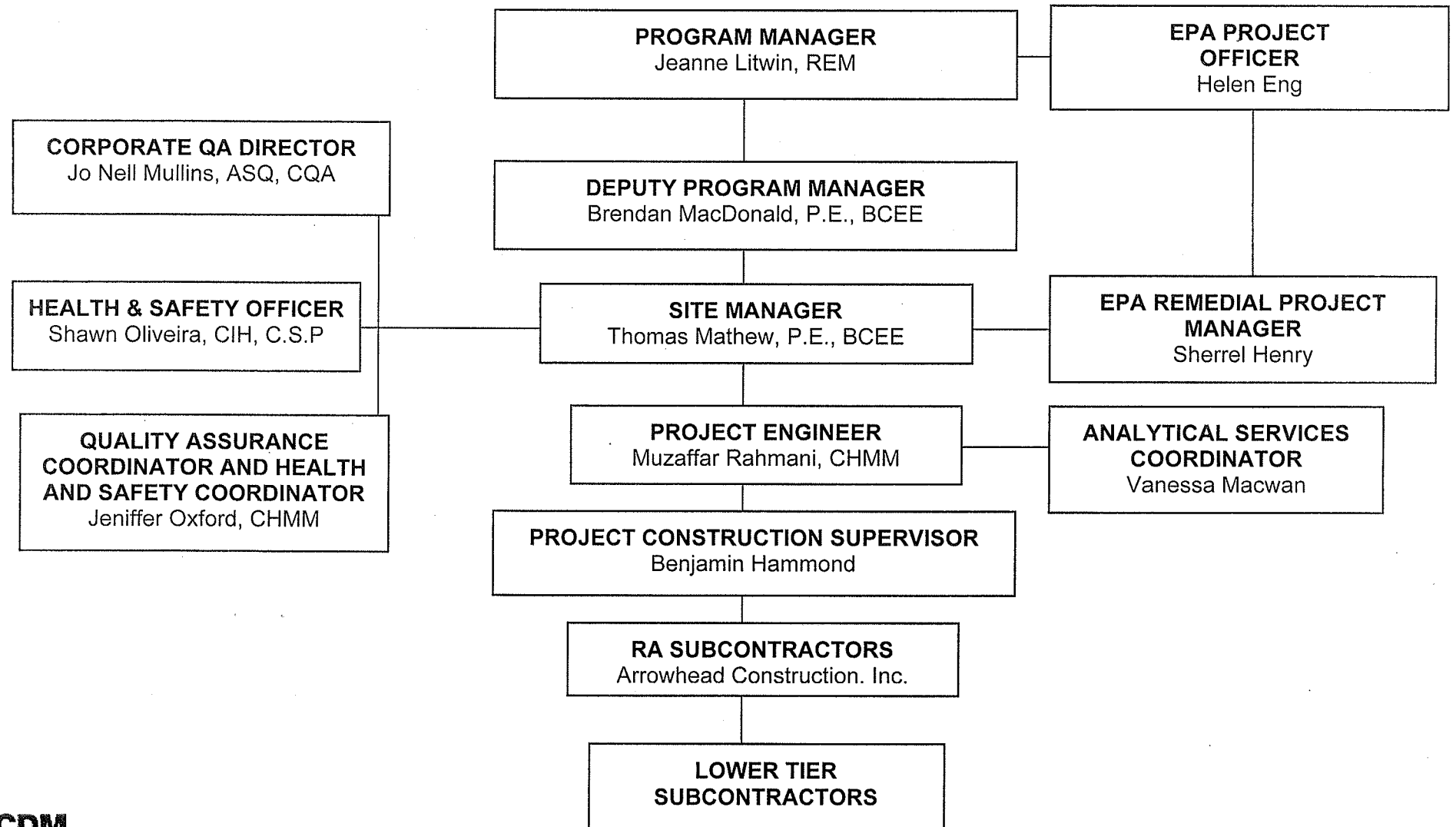

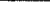




Figure 4-1

Project: 048 ORF Southern Plume
Date: Wed 4/16/14

Task  Milestone  Summary  Progress 

Page 1

Tables

Table 3-2
Contact Information For Local Regulatory and Utility Authorities
Site Management Plan
Old Roosevelt Field Contaminated Groundwater Area Site - Southern Plume
Garden City, New York

Permit/Utility	Authority/Utility Owner	Contact Number
Soil Erosion and Sediment Control Plan	Nassau County Soil & Water Conservation District	(516) 364-5860
Local NYSDEC Representative	NYSDEC Division of Environmental Enforcement, Region 1	John Conover (631) 444-0400
Water & Sewer	Garden City Department of Public Works	(516) 465-4003
Electricity	Long Island Power Authority (LIPA)	(800) 490-0025
Telephone	Verizon	(800) 427-9977
Gas	National Grid	(800) 930-5003
Underground Utility Markouts	New York City One Call Center and Long Island	(800) 272-4480
Fire Department	Garden City Fire Department	(516) 746-1301
Police Department	Garden City Police Department	(516) 465-4100
Health Services	Nassau County Department of Health Services	(516) 227-9697

Acronyms:
NYSDEC - New York State Department of Environmental Conservation
LIPA - Long Island Power Authority

Table 3-1
Contact Information For Property Owners
Site Management Plan
Old Roosevelt Field Contaminated Groundwater Area Site
Garden City, New York

Property	Contact	Phone	Address
Office Plaza (Treeline)	Michael Schor - Executive Vice President	(516) 837-8010	200 Garden City Plaza Garden City, NY 11530
Roosevelt Field Mall (Simon Property Group)	Matthew Boals - Operations Director	(516) 742-8001	630 Old Country Road Garden City, NY 11530
Nassau County	Gerard Ennis - Hazardous Waste Specialist, Department of Public Works	(516) 571-6850	170 Cantiague Rock Road Hicksville, NY 11801
Village of Garden City	Frank Koch - Water Supreintendent	(631) 952-6028	351 Stewart Avenue Garden City, NY 11530

Table 2-1
Project Contact Information
Site Management Plan
Old Roosevelt Field Contaminated Groundwater Area Site - Southern Plume
Garden City, New York

Project Title	Company/ Organization	Name	Phone Number
Remedial Project Manager	EPA	Sherrel Henry	(212) 637-4273
Contracting Officer	EPA	Debbie Butler	(212) 637-3367
Project Officer	EPA	Helen Eng	(212) 637-4348
Site Manager	CDM Smith	Thomas Mathew, P.E.	(732) 590-4638
Procurement/Subcontracts Manager	CDM Smith	Vernon Wimberely	(703) 814-7315
Project Engineer	CDM Smith	Muzaffar Rahmani	(732) 590-4727
Construction Supervisor	CDM Smith	Benjamin Hammond	(315) 212-7362
Health & Safety Officer	CDM Smith	Shawn Oliveira, CIH, C.S.P	(406) 293-8595
Quality Assurance Coordinator and Health & Safety Coordinator	CDM Smith	Jennifer Oxford, CHMM	(212) 377-4536
Project Manager	NYSDEC	Heather Bishop	(518) 402-9692
RA Subcontractor	Arrowhead, Inc.	Doug Ronk	(913) 814-9994

Acronyms:

EPA - U.S. Environmental Protection Agency

NYSDEC - New York State Department of Environmental Conservation

CHMM - Certified Hazardous Materials Manager

C.S.P. - Certified Safety Professional

CIH - Certified Industrial Hygienist

P.E. - Professional Engineer

Table 2-1
Project Contact Information
Site Management Plan
Old Roosevelt Field Contaminated Groundwater Area Site - Southern Plume
Garden City, New York

Project Title	Company/ Organization	Name	Phone Number
Remedial Project Manager	EPA	Sherrel Henry	(212) 637-4273
Contracting Officer	EPA	Debbie Butler	(212) 637-3367
Project Officer	EPA	Helen Eng	(212) 637-4348
Site Manager	CDM Smith	Thomas Mathew, P.E.	(732) 590-4638
Procurement/Subcontracts Manager	CDM Smith	Vernon Wimberely	(703) 814-7315
Project Engineer	CDM Smith	Muzaffar Rahmani	(732) 590-4727
Construction Supervisor	CDM Smith	Benjamin Hammond	(315) 212-7362
Health & Safety Officer	CDM Smith	Shawn Oliveira, CIH, C.S.P	(406) 293-8595
Quality Assurance Coordinator and Health & Safety Coordinator	CDM Smith	Jennifer Oxford, CHMM	(212) 377-4536
Project Manager	NYSDEC	Heather Bishop	(518) 402-9692
RA Subcontractor	Arrowhead, Inc.	Doug Ronk	(913) 814-9994

Acronyms:
EPA - U.S. Environmental Protection Agency
NYSDEC - New York State Department of Environmental Conservation
CHMM - Certified Hazardous Materials Manager
C.S.P. - Certified Safety Professional
CIH - Certified Industrial Hygenist
P.E. - Professional Engineer

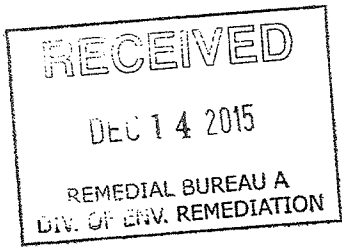
Table 3-1
Contact Information For Property Owners
Site Management Plan
Old Roosevelt Field Contaminated Groundwater Area Site
Garden City, New York

Property	Contact	Phone	Address
Office Plaza (Treeline)	Michael Schor - Executive Vice President	(516) 837-8010	200 Garden City Plaza Garden City, NY 11530
Roosevelt Field Mall (Simon Property Group)	Matthew Boals - Operations Director	(516) 742-8001	630 Old Country Road Garden City, NY 11530
Nassau County	Gerard Ennis - Hazardous Waste Specialist, Department of Public Works	(516) 571-6850	170 Cantiague Rock Road Hicksville, NY 11801
Village of Garden City	Frank Koch - Water Supreintendent	(631) 952-6028	351 Stewart Avenue Garden City, NY 11530

Table 3-2
Contact Information For Local Regulatory and Utility Authorities
Site Management Plan
Old Roosevelt Field Contaminated Groundwater Area Site - Southern Plume
Garden City, New York

Permit/Utility	Authority/Utility Owner	Contact Number
Soil Erosion and Sediment Control Plan	Nassau County Soil & Water Conservation District	(516) 364-5860
Local NYSDEC Representative	NYSDEC Division of Environmental Enforcement, Region 1	John Conover (631) 444-0400
Water & Sewer	Garden City Department of Public Works	(516) 465-4003
Electricity	Long Island Power Authority (LIPA)	(800) 490-0025
Telephone	Verizon	(800) 427-9977
Gas	National Grid	(800) 930-5003
Underground Utility Markouts	New York City One Call Center and Long Island	(800) 272-4480
Fire Department	Garden City Fire Department	(516) 746-1301
Police Department	Garden City Police Department	(516) 465-4100
Health Services	Nassau County Department of Health Services	(516) 227-9697

Acronyms:
NYSDEC - New York State Department of Environmental Conservation
LIPA - Long Island Power Authority



**CDM
Smith**
cdmsmith.com



