



MOVE YOUR ENVIRONMENT FORWARD

## QUARTERLY OPERATION AND MAINTENANCE REPORT – FIRST QUARTER 2021

### **Stanton Cleaners Area Superfund Site**

110 Cutter Mill Road  
Great Neck, New York 110211

NYDEC Site No. 130072

#### Prepared For:

New York State Department of Environmental Conservation  
625 Broadway  
Albany, New York 12233  
Contract #D009808

#### Prepared By:

HRP Associates, Inc.  
1 Fairchild Square, Suite 110  
Clifton Park, NY 12065

HRP #: DEC1003.OM

Issued On: April 30, 2021



## TABLE OF CONTENTS

---

<b>1.0</b>	<b>INTRODUCTION.....</b>	<b>1</b>
<b>2.0</b>	<b>SITE BACKGROUND .....</b>	<b>2</b>
2.1	Site Location and Current Use .....	2
2.2	Remedial History.....	2
2.3	Site Cleanup Objectives .....	3
<b>3.0</b>	<b>OPERATIONS AND MAINTENANCE PROGRAM .....</b>	<b>4</b>
3.1	Groundwater Extraction and Treatment System Operations and Maintenance .....	4
3.1.1	Groundwater Extraction and Treatment System Influent and Effluent Sampling .....	4
3.1.2	Groundwater Extraction and Treatment System Annual SPDES Sampling .....	5
3.2	Soil Vapor Extraction System Operations and Maintenance .....	5
<b>4.0</b>	<b>MONITORING PROGRAM .....</b>	<b>7</b>
4.1	Plume Perimeter Monitoring.....	7
4.2	Groundwater Sampling .....	7
4.3	Indoor Air Quality Sampling .....	7
4.4	Water Authority of Great Neck North Public Supply Well Monitoring.....	8
<b>5.0</b>	<b>MAINTENANCE ISSUES AND RECOMMENDED SOLUTIONS.....</b>	<b>9</b>
<b>6.0</b>	<b>FUTURE ACTIVITIES .....</b>	<b>11</b>
<b>7.0</b>	<b>PROGRESS TOWARD CLEANUP OBJECTIVES .....</b>	<b>12</b>

## **Figures**

Figure 1	Site Location Map
Figure 2	Site Layout
Figure 3	Monitoring Well Network

## **Tables**

Table 1	Groundwater Extraction and Treatment System - Summary of VOC Mass Removal
Table 2	Groundwater Extraction and Treatment System – Influent and Effluent Analytical Results
Table 3	Soil Vapor Extraction System – Influent and Effluent Analytical Results
Table 4	SVE System – Summary of VOC Mass Removal
Table 5	Well Monitoring Schedule
Table 6	Semi-Annual Groundwater Monitoring Analytical Results

## **Appendices**

Appendix A	Daily Inspection Reports
Appendix B	Groundwater Extraction and Treatment System Operation and Maintenance Reports
Appendix C	Soil Vapor Extraction System Operation and Maintenance Reports
Appendix D	Monthly Groundwater Level Measurements
Appendix E	Fire Safety Reports

## General Information

---

### Project/Site Information:

Stanton Cleaners Area Superfund Site  
110 Cutter Mill Road  
Great Neck, NY 11021

### Consultant Information:

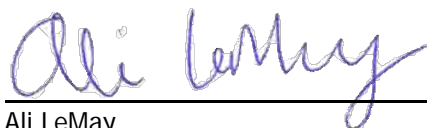
HRP Associates, Inc.  
1 Fairchild Square, Suite 110  
Clifton Park, NY 12065  
Phone: 518-877-7101  
Fax: 518-877-8561  
E-mail: david.feinson@hrpassociates.com  
Project Number: DEC1003.OM

### Client Information:

New York State Department of Environmental  
Conservation  
625 Broadway  
Albany, NY 12233

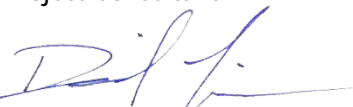
**Report Date:** 4/30/2021

**Report Author:**



Ali LeMay  
Project Consultant

**Project Manager:**



David Feinson  
Project Manager

## 1.0 INTRODUCTION

---

HRP Associates, Inc. (HRP) has been contracted by the New York State Department of Environmental Conservation (NYSDEC) for site management tasks under Standby Engineering Contract D009808. Under this contract, on-going site management was assigned to HRP for the former Stanton Cleaners Site, NYSDEC Site No. 130072, located at 110 Cutter Mill Road in Great Neck, New York (herein referred to as the "Site"). The Site location is depicted on **Figure 1**. The Site is currently listed on the New York State Registry of Inactive Hazardous Waste Sites as a Class 4 site. This designation is for properly closed sites but requires continued management until remedial objectives are achieved. The United States Environmental Protection Agency (USEPA) oversaw the operations and maintenance (O&M) and site management from 2001 to 2012. NYSDEC assumed responsibility for site management in 2012. The on-going site management was assigned to HRP in April 2020. This work assignment (WA) includes the following tasks:

- Task 1 – Preliminary Activities
- Task 2 – Site Management Plan
- Task 3 – System Operations and Maintenance
- Task 4 – Monitoring and Reporting
- Task 5 – Periodic Review and Report
- Task 6 – Site Remedial Systems Optimization

This quarterly Operations and Maintenance (O&M) Report summarizes the O&M and monitoring activities completed during the 1<sup>st</sup> quarter of 2021 (January through March 2021). This report provides a description of the work performed throughout the reporting period, a discussion of the data obtained, and documents the relevant performance monitoring.

## 2.0 **SITE BACKGROUND**

---

### 2.1 **Site Location and Current Use**

Stanton Cleaners is a former dry-cleaning facility located at 110 Cutter Mill Road in Great Neck, Nassau County, New York (The Site location is shown on **Figure 1**). A dry cleaner had operated at the Site since the 1950s. The property had several different owners in subsequent years and the business may have had several names, most recently Stanton Cleaners. Between about 1958 and 1983, waste liquids from the on-Site dry-cleaning processes were discharged, spilled, or leaked onto the ground behind the facility (U.S. Department of Health, 2004). The Site is located approximately 1,000 feet north of an active public water supply well field owned and operated by the Water Authority of Great Neck North (WAGNN). The Site is approximately ¼ acre and includes a two-story building in which the dry-cleaning business operated, an adjacent one-story boiler/storage building, and a building that houses the current remediation system. Site features are depicted on **Figure 2**. The Site is bordered to the west by Cutter Mill Road, to the north and east by a former indoor tennis court, and to the south by a gasoline station. Adjacent areas that have been affected by the contamination include, but are not limited to, the neighboring Plaza Tennis Center, the Century Condominium Complex, the North Shore Sephardic Synagogue, and the Long Island Hebrew Academy (LIHA).

### 2.2 **Remedial History**

In June of 1983, the Nassau County Department of Health (NCDH) inspected the Stanton Cleaners facility. According to NCDH files, the inspection revealed a pipe protruding from the rear side of the building. It was noted that the pipe was connected to the dry-cleaning fluid/water separator that discharged onto the ground in the rear yard sloping away from the building. To determine the impacts of the separator discharge, soil samples were collected by NCDH in the rear of the building. The results of the analysis indicated the soil was contaminated with tetrachloroethene (PCE) at concentrations up to 8,000 parts per million (ppm). Groundwater sampling conducted in January 1998 by a contractor for the NYSDEC detected PCE; 1,2-dichloroethene (DCE); and trichloroethene (TCE) contamination at, and downgradient of Stanton Cleaners.

On June 8, 1998, the NYSDEC requested that USEPA perform a Comprehensive Environmental Response, Compensation, and Liabilities Act (CERCLA) authorized emergency response action at the Site to address contaminated groundwater impacting the nearby public water supply. The Stanton Cleaners Site was added to the National Priorities List (NPL) on May 17, 1999.

A remediation system was subsequently installed at the Site, which includes Groundwater Extraction and Treatment (GWE&T), soil vapor extraction (SVE), and air sparging. Three (3) extraction wells are associated with the GWE&T system and are equipped with submersible pumps. The extracted groundwater is treated through a 2,000-pound liquid phase granular activated carbon (GAC) vessel prior to discharge to the storm sewer. The SVE system consists of six (6) extraction wells connected to a blower and knockout tank. The extracted vapor is treated through a 3,000-pound vapor phase GAC vessel prior to discharge to the atmosphere. An air sparge system was installed using a compressor to provide sparge air to the screened interval in two (2) wells. Use of the air sparge system was discontinued in December 2014.

## 2.3 Site Cleanup Objectives

On-going remedial actions are being implemented to restore the impacted media (soil, soil vapor, and groundwater) to pre-disposal conditions. The closure criterion will ultimately be determined by the NYSDEC based on the future monitoring data. The Standards, Criteria, and Guidance (SCGs) currently used for the various media being sampled at the Site are summarized below.

- Soil – NYSDEC Environmental Conservation Law (ECL) 6 New York Code of Rules and Regulations (NYCRR) Part 375-6: Remedial Program Soil Cleanup Objectives (SCOs)
- Groundwater - NYSDEC Technical and Operational Guidance Series (TOGS) 1.1.1. Ambient Water Quality Standards and Guidance Values and Groundwater Effluent Limitations.
- Soil Vapor - New York State Department of Health (NYSDOH) Final Guidance for Evaluating Soil Vapor Intrusion (SVI) in the State of New York.

### 3.0 **OPERATIONS AND MAINTENANCE PROGRAM**

---

The operations and maintenance program for the Stanton Cleaners Area Superfund Site includes the following:

- Monthly inspections of the GWE&T system and SVE system;
- Monthly sampling and laboratory analysis of GWE&T system influent and effluent. Samples analyzed for VOCs via EPA Method 8260;
- Quarterly sampling of SVE system influent and effluent. Samples analyzed for VOCs via EPA method TO-15; and
- Annually sampling of the system discharge point to the city sewer. Samples will be analyzed for SPDES Equivalency Parameters.

HRP assumed O&M and sampling responsibilities for the Site in January 2021. HRP made an initial site visit on January 13, 2021 to complete a detailed inspection of the remediation systems. Notes related to system issues are included in Section 5.0 of this report. Starting in 2021, HRP will be performing the monthly, quarterly, and annual sampling activities at the Site as well as the day-to-day O&M of the remediation systems. HRP prepares daily reports during each visit to the Site that summarize Site activities for that day. The daily reports are included in **Appendix A**.

#### 3.1 **Groundwater Extraction and Treatment System Operations and Maintenance**

Extraction well EPA-EXT-02, located at the intersection of Cutter Mill Road and Ascot Road, is currently the only operational extraction well. Four (4) other extraction wells, EPA-EXT-01, EPA-EXT-03, EPA-EXT-04R, and ST-IW-01, are not in operation at this time. The locations of the extraction wells are depicted on **Figure 2**. Field notes related to operation and maintenance of the GWE&T system are included in **Appendix B**.

The continuous four-hour data logging software, Lookout®, was not functioning during the entirety of the 4<sup>th</sup> quarter. When functioning, the Lookout® data is used to calculate mass removal rate, total and cumulative flow, and average monthly flow rate.

Based on the field logs, the GWE&T system operated at a flow rate of 56 to 57 gallons per minute (GPM) and discharged a total of approximately 4,896,760 gallons during the 1<sup>st</sup> quarter of 2021. Based on recorded flow rates, monthly totalizer readings, and analysis of laboratory data for samples collected from EPA-EXT-02, approximately 0.31 pounds (lbs) of PCE have been removed in the liquid phase during the 1<sup>st</sup> quarter of 2021. This totals 11.81 lbs of PCE removed in the liquid phase since NYSDEC assumed O&M responsibilities in 2012. The VOC mass removal for the 1<sup>st</sup> quarter of 2021 is summarized on **Table 1**.

##### 3.1.1 **Groundwater Extraction and Treatment System Influent and Effluent Sampling**

Monthly sampling of the GWE&T system influent and effluent is conducted to monitor the efficiency of the system and to determine if liquid GAC breakthrough occurred. Samples were submitted to Eurofins Environment Testing/TestAmerica (Eurofins) for analysis of VOCs via EPA Method 8260.



PCE was detected in the three (3) influent samples at concentrations ranging from 3.7 micrograms per liter (µg/L) to 5.8 µg/L. The detection of PCE in the February influent sample exceeded the NYSDEC GWQS of 5 µg/L. Cyclohexane and methylcyclohexane were detected in the February influent sample, no criteria has been established for these compounds. TCE was detected in the February influent sample below the NYSDEC GWQS. Chloromethane was detected in the March influent sample below NYSDEC GWQS. PCE was detected in the three (3) effluent samples at concentrations ranging from 0.54 µg/L to 1.3 µg/L. The detections of PCE in the effluent samples do not exceed the NYSDEC GWQS of 5 µg/L. The results of influent and effluent sampling during the 1<sup>st</sup> quarter of 2021 are summarized in **Table 2**.

### 3.1.2 Groundwater Extraction and Treatment System Annual SPDES Sampling

Annual SPDES sampling of the groundwater extraction and treatment system was not completed during this quarter.

The next annual sample is scheduled to be collected in the 3<sup>rd</sup> quarter of 2021.

### 3.2 Soil Vapor Extraction System Operations and Maintenance

Air monitoring of the SVE system is performed on a monthly basis. Monitoring includes the field analysis of the following parameters: VOCs, carbon monoxide, oxygen, lower explosive limit, hydrogen sulfide, air velocity (cubic feet per minute), temperature, relative humidity, dew point, and vacuum pressure. The following locations were monitored:

- SVE-Influent
- Post-Blower-Pre-Carbon
- EPA-SVE-1 (shallow)
- EPA-VE-1 (medium)
- EPA-SVE-2 (shallow)
- EPA-SVE-2 (medium)
- SS-A
- SVE-3A
- SVE-3B
- SVE-1 Combined
- SVE-2 Combined
- hSVE-1
- hSVE-2
- Background

Two horizontal SVE (hSVE) wells were installed at the Site in 2020. Operation of the wells began in 2021. Details of the hSVE well installation are being submitted under separate cover. This report documents general operation and maintenance of the SVE system. The SVE system had temporarily been shut-down on December 24, 2020 due to the detection of PCE in the effluent at a concentration exceeding the DAR-1 Short Term Guideline Concentration (SCG). The granular activated carbon was replaced on March 3, 2021. Sampling of the SVE system occurred on March 18, 2021 follow system start-up. Monthly monitoring logs are included in **Appendix C**.

Samples SVE\_INF and SVE\_EFF were collected from the influent and effluent, respectively, via SUMMA canisters and analyzed for VOCs by TO-15 on March 18, 2021. Concentrations of ethanol at  $2,100 \mu\text{g}/\text{m}^3$  and TCE at  $22 \mu\text{g}/\text{m}^3$  were detected in the influent sample (SVE\_INF). Concentrations of ethanol at  $2,700 \mu\text{g}/\text{m}^3$  were detected in the effluent sample (SVE\_EFF). A summary of the SVE influent and effluent sample results is included in **Table 3**.

The samples were collected from hSVE-01 and hSVE-02 on February 23, 2021 when the SVE system was temporarily turned on. Concentrations of 2-butanone (MEK) were detected in hSVE-01 and hSVE-02 at  $130,000 \mu\text{g}/\text{m}^3$  and  $41,000 \mu\text{g}/\text{m}^3$ , respectively.

Flow measurements taken at the SVE-Influent were over the calibration range of the Velocicalc meter used in the field on March 18, 2021. The Velocicalc meter recorded a flow rate of over the calibration range, therefore the flow rate was calculated based on the December flow rate. As mentioned above, the SVE system was shut-down temporarily on December 24, 2020 and remained off until March 18, 2021. Based on the data available, approximately 1.56 lbs of VOCs were removed by the SVE system between December 7 and December 24, 2020. No VOCs were recovered by the SVE system during the 1<sup>st</sup> quarter of 2021, as the system was temporarily shut-down. The VOC mass removal for the 1<sup>st</sup> quarter of 2021 is summarized on **Table 4**.

## 4.0 **MONITORING PROGRAM**

---

The monitoring program for the Stanton Cleaners Area Superfund Site includes the following:

- Quarterly operations and maintenance reports;
- Monthly gauging of 16 monitoring wells for water level;
- Semi-annual groundwater sampling of the well network for analysis of VOCs via EPA Method 8260;
- Annual soil vapor intrusion sampling at the LIHA; and
- Monitoring of the WAGNN supply well.

### 4.1 **Plume Perimeter Monitoring**

Monitoring wells are gauged for water level on a monthly basis to assess capture zones around the groundwater extraction well EPA-EXT-02. **Figure 3** depicts the network of monitoring wells.

In January and March 2021, the 16 wells were gauged and in February 2021, 14 of the 16 wells were gauged. During the February event, monitoring wells EPA-MW-11D and ST-MW-12 were not gauged due to large snow piles making them inaccessible. The locations and number of wells monitored were previously determined by the USEPA based on the 2014 *Final Capture Zone Analysis Report*. **Appendix D** includes the groundwater level measurements.

### 4.2 **Groundwater Sampling**

Semi-annual groundwater sampling was conducted in January 2021. The next routine semi-annual groundwater sampling event is scheduled for July 2021. **Table 5** summarizes the groundwater monitoring schedule. **Table 6** summarizes the January 2021 groundwater analysis results.

During the January 2021 semiannual groundwater sampling event, PCE was detected above the standard in the groundwater samples collected from two monitoring wells, EPA-MW-21R and ST-MW-19, at concentrations of 46 µg/l and 5.8 µg/l, respectively. EPA-MW-21R is located west of the Site and ST-MW-19 is located south of the Site, across Cutter Mill Road. PCE was also detected in EPA-MW-23, EPA-MW-26, MW-101, ST-MW-11, ST-MW-13, ST-MW-14, ST-MW-16, ST-MW-17, ST-MW-18, and ST-MW-20 at concentrations below the regulatory standard.

Additional VOCs, including 1,1-dichloroethylene, bromodichloromethane, bromoform, chloroform, cis-1,2-dichloroethylene, dibromochloromethane, methylene chloride, and trichloroethylene, were detected below the regulatory standard in groundwater samples collected from the other monitoring wells (EPA-MW-21R, MW-101, ST-MW-11, ST-MW-13, ST-MW-14, ST-MW-17, ST-MW-18, and ST-MW-20).

### 4.3 **Indoor Air Quality Sampling**

Indoor air quality sampling was not conducted during this quarter. The next routine annual indoor air sampling event is scheduled for December 2021 at the LIHA.

#### **4.4 Water Authority of Great Neck North Public Supply Well Monitoring**

Monitoring of the WAGNN public supply well was not conducted during this quarter.

## 5.0 **MAINTENANCE ISSUES AND RECOMMENDED SOLUTIONS**

---

The following O&M issues were identified during the 1<sup>st</sup> quarter of 2021:

- Flow readings at the SVE-Influent were not recorded during January and February 2021 due to the system being off-line. Flow readings at the SVE-Influent was not recording during March 2021 due to the flow rate being over the instrument calibration range. An estimation of the mass removal was based on the flow reading collected in December 2020. Alternative equipment may be necessary for the monthly flow readings in order to estimate more accurate mass removal rates for the SVE system.
- The groundwater discharge line runs from the treatment building a distance of approximately 250 feet above grade before being piped underground. The line is sagging in several locations and should have additional support. The line is also uninsulated and could freeze and break if discharge flow is reduced or stops.
  - HRP recommends that, at a minimum, additional supports should be installed beneath the sags.
- The heater in the GWE&T room is not functioning.
  - HRP recommends that the heater be repaired or replaced prior to 4<sup>th</sup> quarter 2021.
- The pH and conductivity sensors associated with the GWE&T system appear to be giving inaccurate readings. HRP checked pH and conductivity in the field using a calibrated YSI meter.
  - HRP recommends that the pH and conductivity sensors associated with the GWE&T system be re-calibrated or replaced, if necessary.
- There is currently no sump or alarm associated with the GWE&T system inside the building in-case of a continuous leak from equipment.
  - HRP recommends that, at a minimum, an alarm should be installed to provide alert and shut-down the system in the event of a leak.
- The continuous four-hour data logging software, Lookout®, was not functioning during the entirety of the first quarter. This software should be fixed in order to help calculate mass removal rates, total and cumulative flow, and average monthly flow rates for the remediation systems.
  - HRP recommends that the logging software be updated as part of system optimization by replacing with a system that can be accessed remotely for regular system operational status checks.
- The SVE system was temporarily shut-down on December 24<sup>th</sup> due to concentrations of VOCs in the effluent exceeding the DAR-1 SCG. The system was re-started on March 18, 2021 following replacement of the GAC.
- SVE piping located along the west side of the Stanton Cleaners building that ties into the SVE-2 line was cut and not capped allowing ambient air to be pulled into the SVE system and diluting the entire influent air and most likely lower vacuum pressure at well heads. A 2-inch expandable cap was placed in the piping in January 2021 to prevent outdoor air from entering the system.

- HRP recommends replacement of the missing piping in order to re-connect SVE-2 to the system and prevent ambient air from entering the system.
- The SVE piping located along the southeast corner of the Stanton Cleaners building is connected with an old fernco fitting that is deteriorated and needs to be replaced.
  - HRP recommends that this fitting be replaced.

HRP will be working on implementing the above recommendations as part of ongoing O&M of the remediation systems in the 2<sup>nd</sup> quarter of 2021.

## 6.0 **FUTURE ACTIVITIES**

---

Future maintenance and monitoring activities at the Site includes the following:

- Routine monthly operations and maintenance activities will continue; and
- Semi-annual groundwater sampling is scheduled to be completed in the 3<sup>rd</sup> quarter of 2021.

## 7.0 **PROGRESS TOWARD CLEANUP OBJECTIVES**

Based on review of O&M field notes and laboratory analysis of samples collected from EPA-EXT-02, the GWE&T system removed approximately 0.31 lbs of VOCs during the 1<sup>st</sup> quarter of 2021. Based on review of O&M field notes and laboratory analysis of SVE-Influent samples analyzed by the laboratory, the SVE system removed approximately 1.56 lbs of VOCs, consisting primarily of PCE, since December 7, 2020. The total cost of system O&M during this quarter was \$26,306.13 (Tasks 1 through 4 of the WA). A cost per pound of VOC removal in both liquid and vapor phase is provided below.

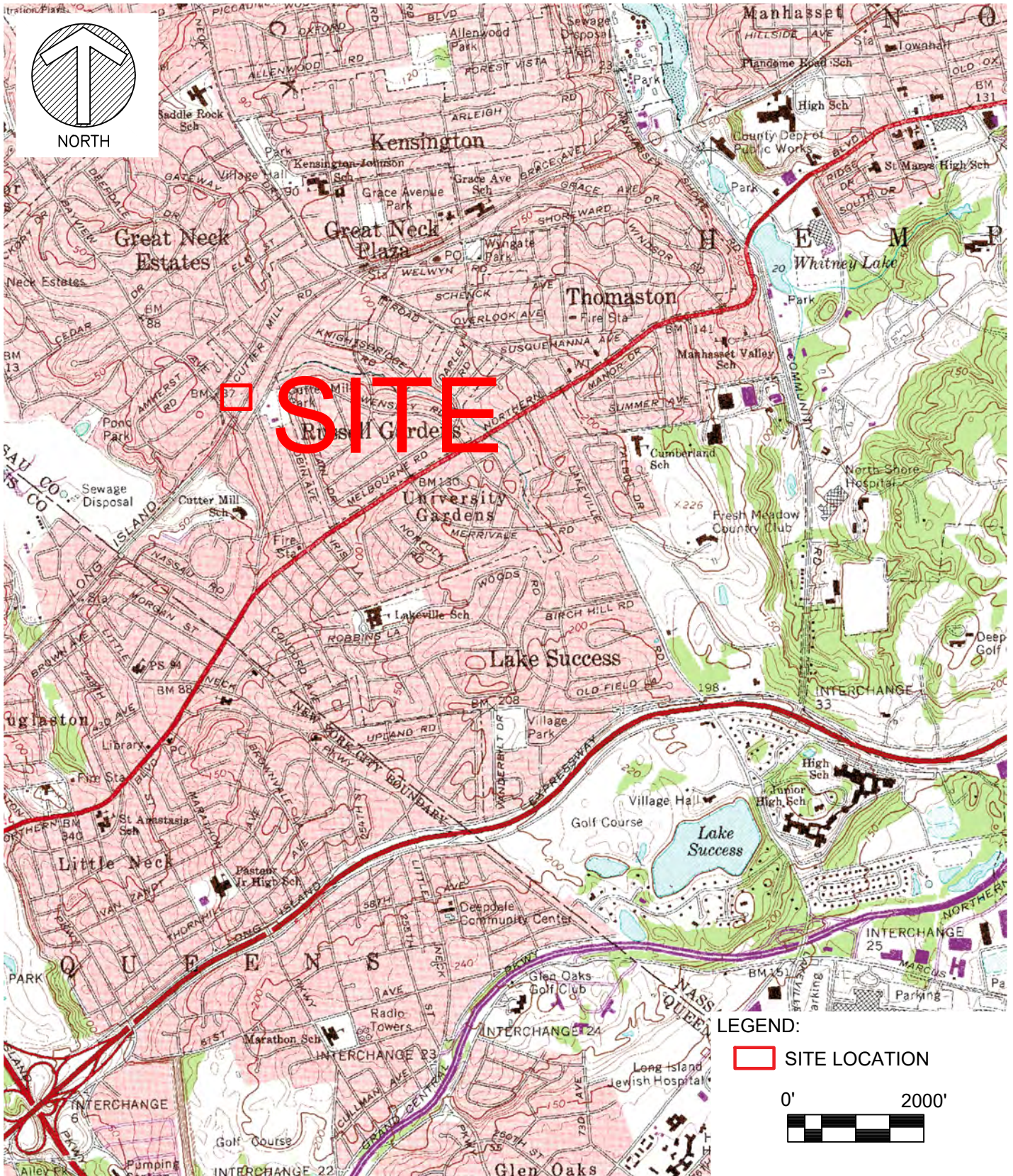
Quarterly Cost Summary					
Period	Quarterly O&M Cost	VOC Mass Removed by SVE (lbs)	VOC Mass Removed by GWE&T (lbs)	Total VOC Mass Removed (lbs)	Cost per Pound of VOC Removal
1/1/2021 through 3/31/2021	\$26,306.13	1.56	0.31	1.87	\$14,067.45

The concentrations of PCE detected in the GWE&T system influent samples exceeded the NYSDEC GWQS in February 2021. The GWE&T system samples collected in January and March 2021 did not exceed the NYSDEC GWQS. Operation of the GWE&T system created a cone of depression and captured dissolved phase VOCs in groundwater between the Site and the WAGNN public supply wells. The GWE&T system should continue to operate in order to mitigate potential impacts to the WAGNN supply well.



# FIGURES





## SITE LOCATION MAP

**STANTON CLEANERS**  
110 CUTTER MILL ROAD  
GREAT NECK, NEW YORK 11021

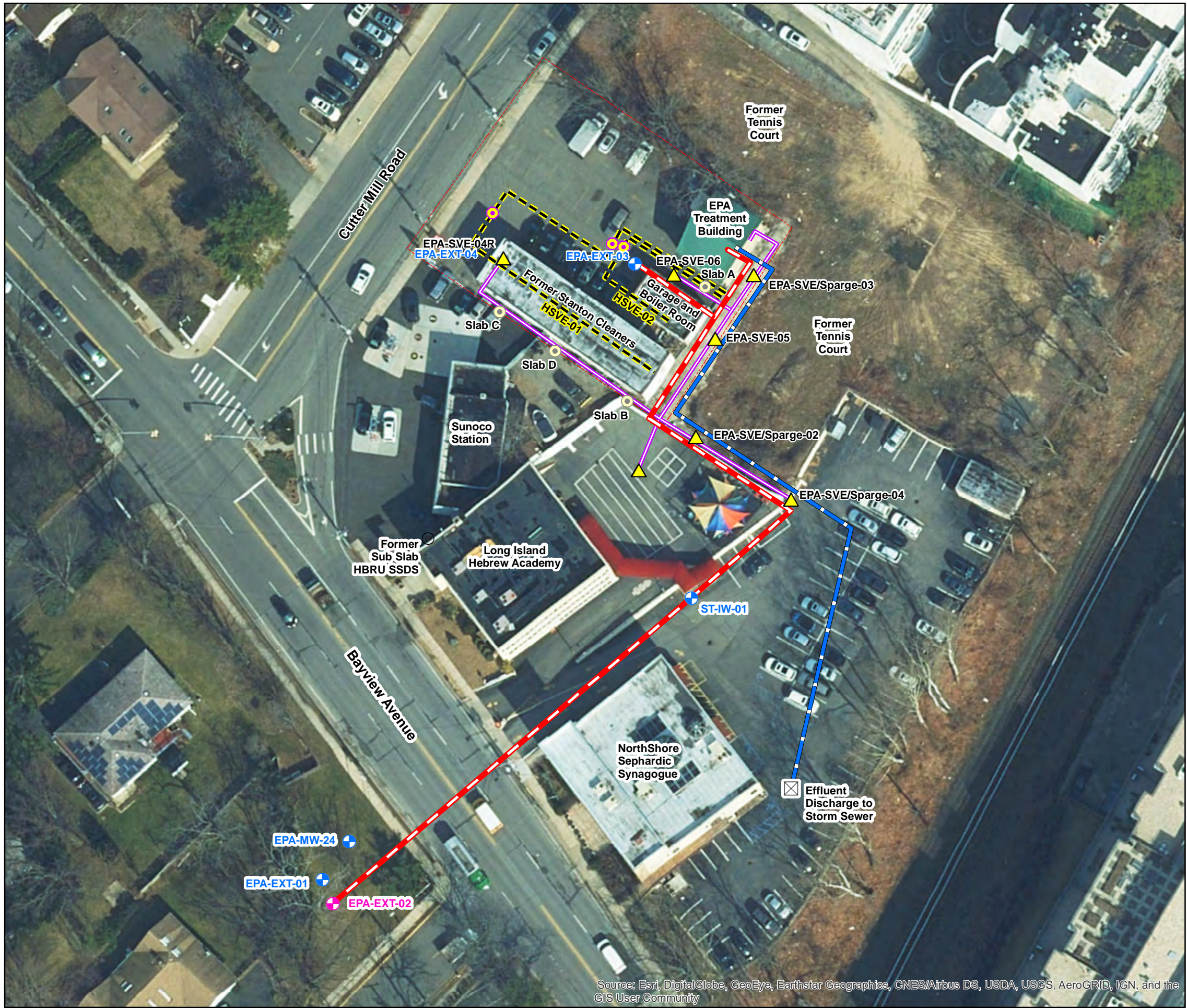
SCALE: 1" = 2000'

05/13/2020  
ISSUE DATE:

DEC1003.OM  
PROJECT NUMBER:

FIGURE  
**1**





## Legend

- HSVE Cleanout
- Effluent Discharge
- SVE Well
- Non-Operational Extraction Well
- Groundwater Extraction Well
- Groundwater Treatment Effluent Line
- Groundwater Treatment Influent Line
- Horizontal SVE Well
- Existing SVE System Suction Line
- Stanton Cleaners Property



197 SCOTT SWAMP ROAD  
FARMINGTON, CT 06032  
(860) 674-9570  
HRPASSOCIATES.COM



0 25 50  
Feet

Revisions	No.	Date	Designed By:	Drawn By:	Reviewed By:
			AAL	BOB	DJF
Issue Date:	01/11/2021	Project No:	DEC1003.OM	Sheet Size:	11x17

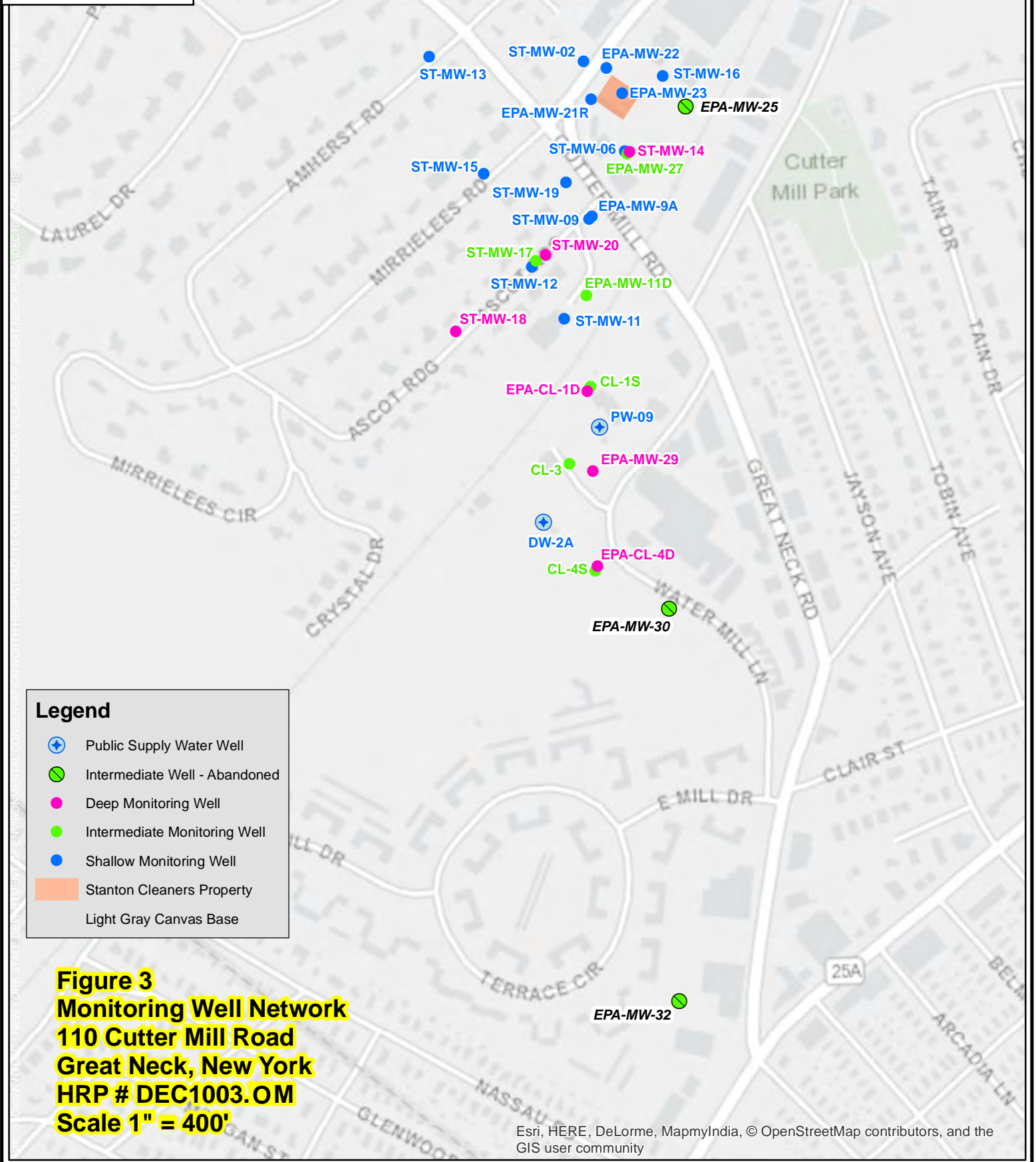
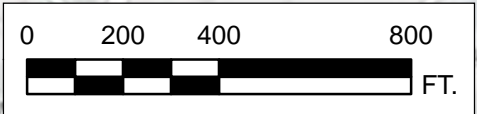
Site Layout  
Stanton Cleaners Site  
110 Cutter Mill Road  
Village of Great Neck Plaza  
New York

Fig. 2





197 SCOTT SWAMP ROAD  
FARMINGTON, CT 06032  
(860) 674-9570  
HRPASSOCIATES.COM



**Figure 3**  
**Monitoring Well Network**  
**110 Cutter Mill Road**  
**Great Neck, New York**  
**HRP # DEC1003.OM**  
**Scale 1" = 400'**

# TABLES

**Table 1: Groundwater Extraction and Treatment System**

Summary of VOC Mass Removal

Stanton Cleaners - NYSDEC Site # 130072

110 Cutter Mill Road, Great Neck, NY

Sample Date	Period (Number of days between samples)	Total Flow (Gallons)	Influent PCE Concentration (µg/L)	PCE Mass Removed (lbs/month)	Cumulative PCE Mass Removed (lbs)
3/20/2020	---	955939.0	5.4	0	10.79
4/15/2020	26	3154729.6	4.2	0.08	10.87
5/6/2020	21	4943370	4.3	0.06	10.93
6/3/2020	28	7305163	3.3	0.07	11.00
7/6/2020	33	10090087	3.9	0.09	11.09
8/5/2020	30	12578875.3	4.6	0.10	11.18
9/1/2020	27	14821635	5.1	0.10	11.28
10/7/2020	36	17759245	3.1	0.08	11.35
11/12/2020	36	20773518	3.4	0.09	11.44
12/7/2020	25	22720425	3.9	0.06	11.50
1/19/2021	43	26183400	3.7	0.11	11.61
2/23/2021	35	28958200	5.8	0.13	11.74
3/18/2021	23	31080160	3.8	0.07	11.81

**Notes**

PCE = Tetrachloroethylene

lbs = pounds

µg/L = micrograms per cubic liter

Table 2: Groundwater Extraction and Treatment System - Influent and Effluent Analytical Results  
Stanton Cleaners - NYSDEC Site # 130072  
110 Cutter Mill Road, Great Neck, NY

Lab Report No.:			4602271371	4602271371	4602287811	4602287811	4602305071	4602305071
			EFF	EPA-EXT-02	EFFLUENT	EPA-EXT-02	EFFLUENT	EPA EXT-02
			1/19/2021	1/19/2021	2/23/2021	2/23/2021	3/18/2021	3/18/2021
	Unit	NYSDEC CLASS GA CRITERIA						
VOC								
Chloromethane	ug/l	5	< 1.0	< 1.0	< 1.0	< 1.0	< 1.0	1.1
Cyclohexane	ug/l		< 1.0	< 1.0	< 1.0	0.44	< 1.0	< 1.0
Methylcyclohexane	ug/l		< 1.0	< 1.0	< 1.0	2.2	< 1.0	< 1.0
Tetrachloroethylene	ug/l	5	0.54	3.7	1.3	5.8	0.86	3.8
Trichloroethylene	ug/l	5	< 1.0	< 1.0	< 1.0	0.38	< 1.0	< 1.0

Legend	
<1	Parameter not detected above the laboratory reporting limit
1	Parameter reported at a concentration greater than applicable regulatory standard/criterion
1	Parameter reported above the laboratory reporting limit but below the applicable regulatory standard/criterion

Notes:  
µg/l = micrograms per liter  
VOCs = Volatile organic Compounds



**Table 3: Soil Vapor Extraction System - Analytical Results**

Stanton Cleaners - NYSDEC Site # 130072

110 Cutter Mill, Great Neck, NY

Lab Report No.: ID: Date Collected:		140220961	140220961	140223611	140223611
		HSVE-01	HSVE-02	SVE-EFF	SVE-INF
		23 Feb 2021	23 Feb 2021	18 Mar 2021	18 Mar 2021
Units					
<b>VOC</b>					
2-Butanone (MEK)	ug/m3	<b>130000</b>	<b>41000</b>	< 47	< 47
Ethanol	ug/m3	< 40000	< 11000	<b>2700</b>	<b>2100</b>
Trichloroethylene	ug/m3	< 2100	< 560	< 9.7	<b>22</b>

**Legend**

&lt;1

Parameter not detected above the laboratory reporting limit

1

Parameter reported above the laboratory reporting limit but below the applicable regulatory standard/criterion

**Notes:**

ug/m3 = micrograms per cubic meter

VOCs = Volatile organic Compounds



**Table 4: Soil Vapor Extraction System**  
**Summary of VOC Mass Removal**  
 Stanton Cleaners - NYSDEC Site # 130072  
 110 Cutter Mill Road, Great Neck, NY

Sample Date	Period (Days)	PCE Concentration (mg/m <sup>3</sup> )	TCE Concentration (mg/m <sup>3</sup> )	cis-1,2-DCE Concentration (mg/m <sup>3</sup> )	Flowrate (cfm)	Ave. PCE Concentration (mg/m <sup>3</sup> )	PCE Discharge (lbs)	Ave. TCE Concentration (mg/m <sup>3</sup> )	TCE Discharge (lbs)	cis-1,2-DCE Concentration (mg/m <sup>3</sup> )	cis-1,2-DCE Discharge (lbs)	Cumulative VOC Mass Removed (lbs)
3/20/2020	1	34.00	0.41	0.40	189	17.00	0.29	0.21	0.00	0.20	0.00	0
6/3/2020	75	10.00	0.28	0.40	189	22.00	28.03	0.35	0.44	0.40	0.00	28.47
9/1/2020	90	12.00	0.39	0.32	189	11.00	16.82	0.34	0.51	0.36	0.00	45.81
12/7/2020	97	5.30	0.16	0.15	186	8.65	14.03	0.28	0.45	0.235	0.00	60.28
12/24/2020	17	5.30	0.16	0.15	186	5.30	1.51	0.16	0.05	0.150	0.00	61.84
SVE Temporarily Shut Down												
3/18/2021	1	0.00	0.022	0.00	186	0.00	0.00	0.01	0.00	0.000	0.00	61.84
3/31/2021	13	0.00	0.022	0.00	186	0.00	0.00	0.02	0.00	0.00	0.00	61.84

**Notes:**

PCE = Tetrachloroethylene

TCE = Trichloroethylene

Cis-1,2-DCE = cis-1,2-dichloroethylene

cfm = cubic feet per minute

ave. = average

lbs = pounds

mg/m<sup>3</sup> = milligrams per cubic meter

SVE system was shut down between 12/24/2020 and 3/18/2021

**Table 5: Well Monitoring Schedule**  
Stanton Cleaners - NYSDEC # 130072  
110 Cutter Mill Road, Great Neck, NY

Well ID	Monthly Gauging	Semi-Annual Sampling
EPA-MW-9A	X	X
EPA-MW-11D	X	X
EPA-MW-21R	X	X
EPA-MW-23	X	X
EPA-MW-26	X	X
EPA-MW-27	X	X
ST-MW-11	X	X
ST-MW-12	X	X
ST-MW-13	X	X
ST-MW-14	X	X
ST-MW-15	X	X
ST-MW-16	X	X
ST-MW-17	X	X
ST-MW-18	X	X
ST-MW-19	X	X
ST-MW-20	X	X

Note: Semi-annual sampling conducted in January and July

**Table 6**  
Summary of Semi-Annual Groundwater Monitoring Analytical Results  
Stanton Cleaners - NYSDEC# 130072  
110 Cutter Mill Road, Great Neck, NY

Lab Report No.:			4602271401	4602271401	4602271401	4602271401	4602271401	4602271401	4602271401	4602271401	4602271401
ID:			EPA-MW-11D	EPA-MW-21R	EPA-MW-23	EPA-MW-26	EPA-MW-9A	MW-100	MW-101	ST-MW-11	ST-MW-12
Date Collected:			1/19/2021	1/19/2021	1/19/2021	1/20/2021	1/20/2021	1/19/2021	1/20/2021	1/19/2021	1/20/2021
	Unit	NYSDEC CLASS GA CRITERIA									
<b>VOC</b>											
1,1-Dichloroethylene	ug/l	5	< 1.0	< 1.0	< 1.0	< 1.0	< 1.0	< 1.0	< 1.0	< 1.0	< 1.0
Bromodichloromethane	ug/l	50	< 1.0	< 1.0	< 1.0	< 1.0	< 1.0	< 1.0	<b>2.4</b>	< 1.0	< 1.0
Bromoform	ug/l	50	< 1.0	< 1.0	< 1.0	< 1.0	< 1.0	< 1.0	<b>1.5</b>	< 1.0	< 1.0
Chloroform	ug/l	7	< 1.0	< 1.0	< 1.0	< 1.0	< 1.0	< 1.0	<b>1.6</b>	< 1.0	< 1.0
cis-1,2-Dichloroethylene	ug/l	5	< 1.0	<b>4.4</b>	< 1.0	< 1.0	< 1.0	< 1.0	< 1.0	< 1.0	< 1.0
Dibromochloromethane	ug/l	50	< 1.0	< 1.0	< 1.0	< 1.0	< 1.0	< 1.0	<b>2.8</b>	< 1.0	< 1.0
Methylene chloride	ug/l	5	< 1.0	< 1.0	< 1.0	< 1.0	< 1.0	< 1.0	< 1.0	< 1.0	< 1.0
Tetrachloroethylene	ug/l	5	< 1.0	<b>46</b>	<b>0.95</b>	<b>0.39</b>	< 1.0	< 1.0	<b>0.45</b>	<b>0.44</b>	< 1.0
Trichloroethylene	ug/l	5	< 1.0	<b>1.9</b>	< 1.0	< 1.0	< 1.0	< 1.0	< 1.0	< 1.0	< 1.0

**Legend**

<1	Parameter not detected above the laboratory reporting limit
<b>1</b>	Parameter reported at a concentration greater than applicable regulatory standard/criterion
1	Parameter reported above the laboratory reporting limit but below the applicable regulatory standard/criterion

**Notes:**

µg/l = micrograms per liter

**Table 6**  
Summary of Semi-Annual Groundwater Monitoring Analytical Results  
Stanton Cleaners - NYSDEC# 130072  
110 Cutter Mill Road, Great Neck, NY

Lab Report No.:			4602271401	4602271401	4602271401	4602271401	4602271401	4602271401	4602271401	4602271401	4602271401
ID:			ST-MW-13	ST-MW-14	ST-MW-15	ST-MW-16	ST-MW-17	ST-MW-18	ST-MW-19	ST-MW-20	ST-MW-27
Date Collected:			1/20/2021	1/19/2021	1/20/2021	1/19/2021	1/19/2021	1/20/2021	1/19/2021	1/19/2021	1/19/2021
	Unit	NYSDEC CLASS GA CRITERIA									
<b>VOC</b>											
1,1-Dichloroethylene	ug/l	5	< 1.0	<b>1.1</b>	< 1.0	< 1.0	< 1.0	< 1.0	<b>0.51</b>	< 1.0	<b>0.94</b>
Bromodichloromethane	ug/l	50	<b>2.2</b>	< 1.0	< 1.0	< 1.0	< 1.0	< 1.0	< 1.0	< 1.0	< 1.0
Bromoform	ug/l	50	<b>1.3</b>	< 1.0	< 1.0	< 1.0	< 1.0	< 1.0	< 1.0	< 1.0	< 1.0
Chloroform	ug/l	7	<b>1.6</b>	< 1.0	< 1.0	< 1.0	< 1.0	< 1.0	< 1.0	< 1.0	< 1.0
cis-1,2-Dichloroethylene	ug/l	5	< 1.0	< 1.0	< 1.0	< 1.0	< 1.0	< 1.0	<b>0.55</b>	< 1.0	<b>0.49</b>
Dibromochloromethane	ug/l	50	<b>3.0</b>	< 1.0	< 1.0	< 1.0	< 1.0	< 1.0	< 1.0	< 1.0	< 1.0
Methylene chloride	ug/l	5	< 1.0	< 1.0	< 1.0	< 1.0	<b>0.37</b>	< 1.0	< 1.0	< 1.0	< 1.0
Tetrachloroethylene	ug/l	5	<b>0.49</b>	<b>0.34</b>	< 1.0	<b>0.60</b>	<b>0.30</b>	<b>3.9</b>	<b>5.8</b>	<b>3.5</b>	< 1.0
Trichloroethylene	ug/l	5	< 1.0	< 1.0	< 1.0	< 1.0	< 1.0	<b>0.89</b>	< 1.0	<b>0.59</b>	< 1.0

**Legend**

<1	Parameter not detected above the laboratory reporting limit
<b>1</b>	Parameter reported at a concentration greater than applicable regulatory standard/criterion
1	Parameter reported above the laboratory reporting limit but below the applicable regulatory standard/criterion

**Notes:**

µg/l = micrograms per liter

# APPENDIX A

## Daily Operation and Maintenance Reports

# DAILY INSPECTION REPORT

Page 1 of 9

Report No. **(Site Name) - NYSDEC Site No. 130072**

Date: 01/20/21

[illegible]

# DAILY INSPECTION REPORT

Page 2 of 9

**Report No. (Site Name) - NYSDEC Site No. 130072**

Date: 01/20/21

[illegible][illegible]

\*On-Site scale for off-site shipment, delivery ticket for material received

**Equipment/Material Tracking Comments:**

**DAILY INSPECTION REPORT**

Report No. (Site Name) - NYSDEC Site No. 130072

Date: 01/20/21

Visitors to Site			
Name	Representing	Entered Exclusion/CRZ Zone	
		Yes	No
		Yes	No
		Yes	No
		Yes	No
		Yes	No
		Yes	No
		Yes	No
		Yes	No
		Yes	No
Site Representatives			
Name	Representing		
Project Schedule Comments			
Issues Pending			
Interaction with Public, Property Owners, Media, etc.			



# DAILY INSPECTION REPORT

Page 4 of 9

Report No. (Site Name) - NYSDEC Site No. 130072

Date: 01/20/21

**Include (insert) figures with markups showing location of work and job progress**

# DAILY INSPECTION REPORT

Page 5 of 9

Report No. (Site Name) - NYSDEC Site No. 130072

Date: 01/20/21

---

# DAILY INSPECTION REPORT

Page 6 of 9

Report No. (Site Name) - NYSDEC Site No. 130072

Date: 01/20/21

Site Photographs (Descriptions Below)	



Department of  
Environmental  
Conservation



## DAILY INSPECTION REPORT

Page 7 of 9

Report No. (Site Name) - NYSDEC Site No. 130072

Date: 01/20/21

<b>Comments</b>	
<b>Site Inspector(s):</b>	<b>Date:</b>

**DAILY INSPECTION REPORT**

Report No. (Site Name) - NYSDEC Site No. 130072

Date: 01/20/21

**DAILY HEALTH CHECKLIST**

Is social distancing being practiced?	Yes <input checked="" type="checkbox"/>	No <input type="checkbox"/>
Is the tail gate safety meeting held outdoors?	Yes <input checked="" type="checkbox"/>	No <input type="checkbox"/>
Are remote/call in job meetings being held in lieu of meeting in person where possible?	Yes <input checked="" type="checkbox"/>	No <input type="checkbox"/>
Were personal protective gloves, masks, and eye protection being used?	Yes <input checked="" type="checkbox"/>	No <input type="checkbox"/>
Are sanitizing wipes, wash stations or spray available?	Yes <input checked="" type="checkbox"/>	No <input type="checkbox"/>
Have any workers/visitors been excluded based on close contact with individuals diagnosed with COVID-19, have recently traveled to restricted areas or countries, or are symptomatic (fever, chills, cough/shortness of breath)?	Yes <input type="checkbox"/>	No <input checked="" type="checkbox"/>
<u>Comments:</u>		

**REMEDIAL ACTIVITIES AT PROPERTIES**

1. Have anyone at this location been tested and confirmed to have COVID-19?	Yes <input type="checkbox"/>	No <input checked="" type="checkbox"/>
2. Is anyone at this location isolated or quarantined for COVID-19?	Yes <input type="checkbox"/>	No <input checked="" type="checkbox"/>
3. Has anyone at this locaton had contact with anyone known to have COVID-19 in the past 14 days?	Yes <input type="checkbox"/>	No <input checked="" type="checkbox"/>
4. Does anyone at this locaton have any symptoms of a respiratory infection (e.g., cough, sore throat, fever, or shortness of breath)?	Yes <input type="checkbox"/>	No <input checked="" type="checkbox"/>
5. Does the Department and its contractors have your permission to enter the property at this time?	Yes <input checked="" type="checkbox"/>	No <input type="checkbox"/>
If Yes to <u>any</u> of 1-4 above: <ul style="list-style-type: none"> <li>If it is <u>not</u> critical that service/entry be carried out immediately and can be postponed until the risk of COVID-19 is lower, or can be accomplished remotely/without entry, postpone or conduct service without entry.</li> <li>If it <u>is</u> critical that service/entry be carried out immediately, advise occupants that as a precaution and for our own protection, project personnel will be donning appropriate PPE* (including respiratory protection) - and do so prior to entry.</li> </ul>	Yes <input type="checkbox"/>	No <input type="checkbox"/>
<u>Comments:</u>		

# DAILY INSPECTION REPORT

Report No. (Site Name) - NYSDEC Site No. 130072

Date: 01/20/21

# NUISANCE CHECKLIST

Were there any community complaints related to work on this date?	Yes <input type="checkbox"/>	No <input checked="" type="checkbox"/>	N/A <input type="checkbox"/>
Were there any odors detected on this date?	Yes <input type="checkbox"/>	No <input checked="" type="checkbox"/>	N/A <input type="checkbox"/>
Was noise outside specification and/or above background on this date?	Yes <input type="checkbox"/>	No <input checked="" type="checkbox"/>	N/A <input type="checkbox"/>
Were vibration readings outside specification and/or above background on this date?	Yes <input type="checkbox"/>	No <input type="checkbox"/>	N/A <input checked="" type="checkbox"/>
Any visible dust observed beyond the work perimeter on this date?	Yes <input type="checkbox"/>	No <input type="checkbox"/>	N/A <input checked="" type="checkbox"/>
Any visible contrast (turbidity) beyond engineering controls observed on this date?	Yes <input type="checkbox"/>	No <input type="checkbox"/>	N/A <input checked="" type="checkbox"/>
Was turbidity checked at the Montauk Highway outfall?	AM <input type="checkbox"/>	PM <input type="checkbox"/>	N/A <input checked="" type="checkbox"/>
Were any property owners NOT provided advance notice for work performed on this property on this date?	Yes <input type="checkbox"/>	No <input type="checkbox"/>	N/A <input checked="" type="checkbox"/>
Was the temporary fabric structure closed at the end of the day?	Yes <input type="checkbox"/>	No <input type="checkbox"/>	N/A <input checked="" type="checkbox"/>
Has Contractor failed to protect all foundations and structures adjacent to and adjoining the site which are affected by the excavations or other operations connected with performance of the Work?	Yes <input type="checkbox"/>	No <input type="checkbox"/>	N/A <input checked="" type="checkbox"/>
If yes, has Contractor been notified?	Yes <input type="checkbox"/>	No <input type="checkbox"/>	N/A <input checked="" type="checkbox"/>
<u>Comments:</u>			

# DAILY INSPECTION REPORT

Report No. (Site Name) - NYSDEC Site No. 130072

Date: 01/19/21



NEW YORK STATE  
Department of  
Environmental  
Conservation  
50

# DAILY INSPECTION REPORT

Page 2 of 9

**Report No. (Site Name) - NYSDEC Site No. 130072**

Date: 01/19/21

[illegible][illegible]

\*On-Site scale for off-site shipment, delivery ticket for material received

**Equipment/Material Tracking Comments:**



**DAILY INSPECTION REPORT**

Report No. (Site Name) - NYSDEC Site No. 130072

Date: 01/19/21

Visitors to Site			
Name	Representing	Entered Exclusion/CRZ Zone	
		Yes	No
		Yes	No
		Yes	No
		Yes	No
		Yes	No
		Yes	No
		Yes	No
		Yes	No
		Yes	No
Site Representatives			
Name	Representing		
Project Schedule Comments			
Issues Pending			
Interaction with Public, Property Owners, Media, etc.			

# DAILY INSPECTION REPORT

Page 4 of 9

Report No. (Site Name) - NYSDEC Site No. 130072

Date: 01/19/21

**Include (insert) figures with markups showing location of work and job progress**

# DAILY INSPECTION REPORT

Page 5 of 9

Report No. (Site Name) - NYSDEC Site No. 130072

Date: 01/19/21

---

# DAILY INSPECTION REPORT

Page 6 of 9

Report No. (Site Name) - NYSDEC Site No. 130072

Date: 01/19/21

Site Photographs (Descriptions Below)	



Department of  
Environmental  
Conservation



# DAILY INSPECTION REPORT

Page 7 of 9

**Report No. (Site Name) - NYSDEC Site No. 130072**

Date: 01/19/21

Comments	
Site Inspector(s):	Date:

**DAILY INSPECTION REPORT**

Report No. (Site Name) - NYSDEC Site No. 130072

Date: 01/19/21

**DAILY HEALTH CHECKLIST**

Is social distancing being practiced?	Yes <input checked="" type="checkbox"/>	No <input type="checkbox"/>
Is the tail gate safety meeting held outdoors?	Yes <input checked="" type="checkbox"/>	No <input type="checkbox"/>
Are remote/call in job meetings being held in lieu of meeting in person where possible?	Yes <input checked="" type="checkbox"/>	No <input type="checkbox"/>
Were personal protective gloves, masks, and eye protection being used?	Yes <input checked="" type="checkbox"/>	No <input type="checkbox"/>
Are sanitizing wipes, wash stations or spray available?	Yes <input checked="" type="checkbox"/>	No <input type="checkbox"/>
Have any workers/visitors been excluded based on close contact with individuals diagnosed with COVID-19, have recently traveled to restricted areas or countries, or are symptomatic (fever, chills, cough/shortness of breath)?	Yes <input type="checkbox"/>	No <input checked="" type="checkbox"/>
<u>Comments:</u>		

**REMEDIAL ACTIVITIES AT PROPERTIES**

1. Have anyone at this location been tested and confirmed to have COVID-19?	Yes <input type="checkbox"/>	No <input checked="" type="checkbox"/>
2. Is anyone at this location isolated or quarantined for COVID-19?	Yes <input type="checkbox"/>	No <input checked="" type="checkbox"/>
3. Has anyone at this locaton had contact with anyone known to have COVID-19 in the past 14 days?	Yes <input type="checkbox"/>	No <input checked="" type="checkbox"/>
4. Does anyone at this locaton have any symptoms of a respiratory infection (e.g., cough, sore throat, fever, or shortness of breath)?	Yes <input type="checkbox"/>	No <input checked="" type="checkbox"/>
5. Does the Department and its contractors have your permission to enter the property at this time?	Yes <input checked="" type="checkbox"/>	No <input type="checkbox"/>
If Yes to <u>any</u> of 1-4 above: <ul style="list-style-type: none"> <li>If it is <u>not</u> critical that service/entry be carried out immediately and can be postponed until the risk of COVID-19 is lower, or can be accomplished remotely/without entry, postpone or conduct service without entry.</li> <li>If it <u>is</u> critical that service/entry be carried out immediately, advise occupants that as a precaution and for our own protection, project personnel will be donning appropriate PPE* (including respiratory protection) - and do so prior to entry.</li> </ul>	Yes <input type="checkbox"/>	No <input type="checkbox"/>
<u>Comments:</u>		

# DAILY INSPECTION REPORT

**Report No. (Site Name) - NYSDEC Site No. 130072**

Date: 01/19/21

## NUISANCE CHECKLIST

Were there any community complaints related to work on this date?	Yes <input type="checkbox"/>	No <input checked="" type="checkbox"/>	N/A <input type="checkbox"/>
Were there any odors detected on this date?	Yes <input type="checkbox"/>	No <input checked="" type="checkbox"/>	N/A <input type="checkbox"/>
Was noise outside specification and/or above background on this date?	Yes <input type="checkbox"/>	No <input checked="" type="checkbox"/>	N/A <input type="checkbox"/>
Were vibration readings outside specification and/or above background on this date?	Yes <input type="checkbox"/>	No <input type="checkbox"/>	N/A <input checked="" type="checkbox"/>
Any visible dust observed beyond the work perimeter on this date?	Yes <input type="checkbox"/>	No <input type="checkbox"/>	N/A <input checked="" type="checkbox"/>
Any visible contrast (turbidity) beyond engineering controls observed on this date?	Yes <input type="checkbox"/>	No <input type="checkbox"/>	N/A <input checked="" type="checkbox"/>
Was turbidity checked at the Montauk Highway outfall?	AM <input type="checkbox"/>	PM <input type="checkbox"/>	N/A <input checked="" type="checkbox"/>
Were any property owners NOT provided advance notice for work performed on this property on this date?	Yes <input type="checkbox"/>	No <input type="checkbox"/>	N/A <input checked="" type="checkbox"/>
Was the temporary fabric structure closed at the end of the day?	Yes <input type="checkbox"/>	No <input type="checkbox"/>	N/A <input checked="" type="checkbox"/>
Has Contractor failed to protect all foundations and structures adjacent to and adjoining the site which are affected by the excavations or other operations connected with performance of the Work?	Yes <input type="checkbox"/>	No <input type="checkbox"/>	N/A <input checked="" type="checkbox"/>
If yes, has Contractor been notified?	Yes <input type="checkbox"/>	No <input type="checkbox"/>	N/A <input checked="" type="checkbox"/>
<u>Comments:</u>			

# DAILY INSPECTION REPORT

Page 1 of 9

**Report No. (Site Name) - NYSDEC Site No. 130072**

Date: 01/13/21

[illegible]



# DAILY INSPECTION REPORT

Page 2 of 9

**Report No. (Site Name) - NYSDEC Site No. 130072**

Date: 01/13/21

[illegible][illegible]

\*On-Site scale for off-site shipment, delivery ticket for material received

Equipment/Material Tracking Comments:

**DAILY INSPECTION REPORT**

Report No. (Site Name) - NYSDEC Site No. 130072

Date: 01/13/21

Visitors to Site			
Name	Representing	Entered Exclusion/CRZ Zone	
		Yes	No
		Yes	No
		Yes	No
		Yes	No
		Yes	No
		Yes	No
		Yes	No
		Yes	No
		Yes	No
Site Representatives			
Name	Representing		
Project Schedule Comments			
Issues Pending			
Interaction with Public, Property Owners, Media, etc.			

# DAILY INSPECTION REPORT

Page 4 of 9

Report No. \_\_\_\_\_ (Site Name) - NYSDEC Site No. 130072 Date: 01/13/21

---

**Include (insert) figures with markups showing location of work and job progress**

# DAILY INSPECTION REPORT

Page 5 of 9

Report No. (Site Name) - NYSDEC Site No. 130072 Date: 01/13/21

---

# DAILY INSPECTION REPORT

Page 6 of 9

Report No. (Site Name) - NYSDEC Site No. 130072

Date: 01/13/21

Site Photographs (Descriptions Below)	

## DAILY INSPECTION REPORT

Page 7 of 9

Report No. (Site Name) - NYSDEC Site No. 130072

Date: 01/13/21

<b>Comments</b>	
<b>Site Inspector(s):</b>	<b>Date:</b>

**DAILY INSPECTION REPORT**Report No. \_\_\_\_\_ (Site Name) - NYSDEC Site No. **130072** Date: 01/13/21**DAILY HEALTH CHECKLIST**

Is social distancing being practiced?	Yes <input checked="" type="checkbox"/>	No <input type="checkbox"/>
Is the tail gate safety meeting held outdoors?	Yes <input checked="" type="checkbox"/>	No <input type="checkbox"/>
Are remote/call in job meetings being held in lieu of meeting in person where possible?	Yes <input checked="" type="checkbox"/>	No <input type="checkbox"/>
Were personal protective gloves, masks, and eye protection being used?	Yes <input checked="" type="checkbox"/>	No <input type="checkbox"/>
Are sanitizing wipes, wash stations or spray available?	Yes <input checked="" type="checkbox"/>	No <input type="checkbox"/>
Have any workers/visitors been excluded based on close contact with individuals diagnosed with COVID-19, have recently traveled to restricted areas or countries, or are symptomatic (fever, chills, cough/shortness of breath)?	Yes <input type="checkbox"/>	No <input type="checkbox"/>
<u>Comments:</u>		

**REMEDIAL ACTIVITIES AT PROPERTIES**

1. Have anyone at this location been tested and confirmed to have COVID-19?	Yes <input type="checkbox"/>	No <input checked="" type="checkbox"/>
2. Is anyone at this location isolated or quarantined for COVID-19?	Yes <input type="checkbox"/>	No <input checked="" type="checkbox"/>
3. Has anyone at this locaton had contact with anyone known to have COVID-19 in the past 14 days?	Yes <input type="checkbox"/>	No <input checked="" type="checkbox"/>
4. Does anyone at this locaton have any symptoms of a respiratory infection (e.g., cough, sore throat, fever, or shortness of breath)?	Yes <input type="checkbox"/>	No <input checked="" type="checkbox"/>
5. Does the Department and its contractors have your permission to enter the property at this time?	Yes <input checked="" type="checkbox"/>	No <input type="checkbox"/>
If Yes to <u>any</u> of 1-4 above: <ul style="list-style-type: none"> <li>If it is <u>not</u> critical that service/entry be carried out immediately and can be postponed until the risk of COVID-19 is lower, or can be accomplished remotely/without entry, postpone or conduct service without entry.</li> <li>If it <u>is</u> critical that service/entry be carried out immediately, advise occupants that as a precaution and for our own protection, project personnel will be donning appropriate PPE* (including respiratory protection) - and do so prior to entry.</li> </ul>	Yes <input type="checkbox"/>	No <input type="checkbox"/>
<u>Comments:</u>		

# DAILY INSPECTION REPORT

Report No. (Site Name) - NYSDEC Site No. 130072 Date: 01/13/21

## NUISANCE CHECKLIST

Were there any community complaints related to work on this date?	Yes <input type="checkbox"/>	No <input checked="" type="checkbox"/>	N/A <input type="checkbox"/>
Were there any odors detected on this date?	Yes <input type="checkbox"/>	No <input checked="" type="checkbox"/>	N/A <input type="checkbox"/>
Was noise outside specification and/or above background on this date?	Yes <input type="checkbox"/>	No <input checked="" type="checkbox"/>	N/A <input type="checkbox"/>
Were vibration readings outside specification and/or above background on this date?	Yes <input type="checkbox"/>	No <input type="checkbox"/>	N/A <input checked="" type="checkbox"/>
Any visible dust observed beyond the work perimeter on this date?	Yes <input type="checkbox"/>	No <input type="checkbox"/>	N/A <input checked="" type="checkbox"/>
Any visible contrast (turbidity) beyond engineering controls observed on this date?	Yes <input type="checkbox"/>	No <input type="checkbox"/>	N/A <input checked="" type="checkbox"/>
Was turbidity checked at the Montauk Highway outfall?	AM <input type="checkbox"/>	PM <input type="checkbox"/>	N/A <input checked="" type="checkbox"/>
Were any property owners NOT provided advance notice for work performed on this property on this date?	Yes <input type="checkbox"/>	No <input type="checkbox"/>	N/A <input checked="" type="checkbox"/>
Was the temporary fabric structure closed at the end of the day?	Yes <input type="checkbox"/>	No <input type="checkbox"/>	N/A <input checked="" type="checkbox"/>
Has Contractor failed to protect all foundations and structures adjacent to and adjoining the site which are affected by the excavations or other operations connected with performance of the Work?	Yes <input type="checkbox"/>	No <input type="checkbox"/>	N/A <input checked="" type="checkbox"/>
If yes, has Contractor been notified?	Yes <input type="checkbox"/>	No <input type="checkbox"/>	N/A <input checked="" type="checkbox"/>
<u>Comments:</u>			



# APPENDIX B

## Groundwater Extraction and Treatment System Operation and Maintenance Reports

Stanton Cleaners Area Superfund Site  
Soil Vapor Extraction System  
Monthly Operations and Maintenance Data Log

Date: 1-20-2021

HRP #: DEC 10030m

Field Personnel: DJA/KG

Pump	Flow (GPM)	Valve Open	Data from Computer Screen System:
Total Gallons Treated	568443840		
Discharge Rate	293		
Discharge Conductivity	15.19		
Discharge pH	5.6		
SVE Air Flow Rate (CFM)	46		

Visual Digital Readouts from Catwalk	
Discharge pH	4.98
Discharge Temperature	18°C
Discharge Conductivity	1424 7.70*

\*After meter adjustment

Flow Meter Reading	
Flow Rate (GPM)	57
Total Gallons	61834

meter display in 100 of gallons

Effluent Flow Meter Reading	
Flow Rate	2980
Total Gallons (GPH)	73708997

Weather: cloudy, 34°F

Notes: Used YSI 650 Multiparameter Sondes to measure discharge pH 6.36 at 14.24°C, Conductivity 755

Stanton Cleaners Area Superfund Site  
Soil Vapor Extraction System  
Monthly Operations and Maintenance Data Log

Date: 2-23-21

HRP #: DEC 1003 GM

Field Personnel: DJA/CJL

Pump	Flow (GPM)	Valve Open	Data from Computer Screen System:
Total Gallons Treated	575110121		
Discharge Rate	293		
Discharge Conductivity	7.79		
Discharge pH	5.6		
SVE Air Flow Rate (CFM)	42		

Visual Digital Readouts from Catwalk	
Discharge pH	4.97
Discharge Temperature	18°C
Discharge Conductivity	6.19

Flow Meter Reading	
Flow Rate (GPM)	56
Total Gallons	89582

meter display in 100 of gallons

Effluent Flow Meter Reading	
Flow Rate	2492
Total Gallons (GPH)	1647644.4

Weather:

Notes: Used Ecosense YSI pH10A handheld meter pH 6.34 temp 16.8°C on-site  
YSI 650 used to sample conductivity, a conductivity of 818 was recorded

Stanton Cleaners Area Superfund Site  
Soil Vapor Extraction System  
Monthly Operations and Maintenance Data Log

Date: 3-18-2021

HRP #: DEC1003 OM

Field Personnel: Dave Adams

Pump	Flow (GPM)	Valve Open	
			Data from Computer Screen System:
Total Gallons Treated	580627737		
Discharge Rate	293		
Discharge Conductivity	2.89		
Discharge pH	5.6		
SVE Air Flow Rate (CFM)	38		

Visual Digital Readouts from Catwalk	
Discharge pH	4.89
Discharge Temperature	19°C
Discharge Conductivity	1.21

Flow Meter Reading	
Flow Rate (GPM)	56
Total Gallons	08016

meter display in 100 of gallons

Effluent Flow Meter Reading	
Flow Rate	2486
Total Gallons (GPH)	42410305

Weather:

Notes: Used Ecoseense YSI pH 6.87 temp 15.7°C on-site  
YSI 650 used to check conductivity 797 recorded

# APPENDIX C

## Soil Vapor Extraction System Operation and Maintenance Reports

**Stanton Cleaners  
Great Neck NY  
DEC1003.OM**

Date: 02/23/21

On site: 7:07AM

FTS: DJA

Weather: cloudy 35°F

Purpose: Start HSVE 01&02

Start SVE System at 9:30am opening HSVE extraction well valves 100% closing all other extraction wells. Open bypass 3/4 to reduce vacuum at blower to keep from tripping off.

vac.  
HSVE-01 18"  
HSVE-02 18"  
blower vac 34"

	PID ppm	Time
HSVE-01	307.1	9:36a
	263	9:57a
	112.1	10:09a
HSVE-02	117.4	9:39a
	47.2	9:59a
	54.2	10:04a

Parameters using Multirae

	CO	Oxygen	LEL	H2S
HSVE-01	0ppm	20.9	0%	0.0ppm
<b>HSVE-02</b>	<b>0ppm</b>	20.9	0%	0.0ppm

**Velocity using HRP TSI 9535**

	Vel.	Temp. F
<b>HSVE-01</b>	3.40cfm	56.2
<b>HSVE-02</b>	4.04cfm	52.8

**sample HSVE-01&02 at 10:15 to 10:20am using 1L summas with 5 minute regulators**

**Shut down SVE system at 10:30am**



Stanton Cleaners Area Superfund Site  
Soil Vapor Extraction System  
Monthly Air Monitoring Log

Date: 3-18-2021  
HRP #: DEC10030M

	Pipe ID	FID	MultiRae					VelociCalc				
		VOC	VOC	CO	Oxygen	LEL	H2S	Temp.	Vac. Pres.	%RH	Dew Pt.	Flow
SVE-Influent	5.709		9.9	0	20.9	0	0.0	58	11"	68.2	14.3	over
Post-Blower Pre-Carbon*	5.706		2.6	0	19.8	0	0.0	61.1	+6.5"	14.3	16.3	87.80
EPA-SVE-1 (shallow)	1.913		0.0	0	20.9	0	0.0	46.8	9.8"	99.9	7.6	0.70
EPA-SVE-1 (medium)	1.913		0.0	0	20.9	0	0.0	47.0	1.2"	99.9	9.2	1.27
EPA-SVE-2 (shallow)	1.913		1.4	0	20.9	0	0.0	48.1	2.0"	99.9	10.4	7.87
EPA-SVE-2 (medium)	1.913		3.2	0	20.9	0	0.0	47.9	1.2"	99.1	9.2	6.90
SS-A	1.913		0.0	0	20.9	0	0.0	51.8	7.4"	94.5	6.3	32.73
SVE-3A	1.913		0.2	0	20.9	0	0.0	50.2	11.0"	97.4	10.0	8.09
SVE-3B	1.913		1.2	0	20.9	0	0.0	50.2	9.0"	98.6	10.3	27.28
SVE-1 Combined	1.913		2.3	0	20.9	0	0.0	49.1	10.0"	+	+	+
SVE-2 Combined	1.913		2.7	0	20.9	0	0.0	48.9	9.0"	99.9	8.2	26.25
hSVE-1			370.0	0	20.9	0	0.0	51.3	10.0"	90.3	6.4	2.62
hSVE-2			230.2	0	20.9	0	0.0	52.5	11.0"	85.6	6.0	2.47
Background	N/A		0.0	0	20.9	0	0.0	46.0	—	90.0	6.4	—

	On/Off Prior to Monitoring Date	On/Off After Monitoring Date
SVE-1		
SVE-2		
SVE-3		
SVE-4		
EPA-SVE-04R/SSB(A)		
SS-A		
SS-B(B)		
SS-B(C)		
L1		
L2		
hSVE-1		
hSVE-2		

Equipment Calibrated by: OJA Air Readings Collected by: OJA

FID - Flame Ionization Detector  
CO - Carbon Monoxide  
LEL - Lower Explosive Limit  
VOC - Volatile Organic Compounds  
H2S - Hydrogen Sulfide

Temperature - degrees F  
Vacuum Pressure - inches/H2O  
%RH - Relative Humidity  
Dew Point - degrees F  
Flow - cubic feet per minute (CFM)

\*SVE-Effluent relabeled as "Post-Blower Pre-Carbon"

+ extraction well piping ~~to~~ pulling water could not get readings.

# APPENDIX D

## Monthly Groundwater Level Measurements



**Stanton Cleaners Area Superfund Site**  
**Water Level Data Summary**

Site: Stanton Cleaners Area Superfund Site

Date: 1/19/21

Location: 110 Cutter Mill Road, Great Neck, NY

Project #: DEC10030.M  
DEC site #130072

Field Personnel: DJA, CJC, JCG

Well ID	Depth to Water (feet)	Time	Notes
EPA-MW-11D	58.55	10:20	No Bolts
EPA-MW-21R	66.21	7:49	No Bolt, 1 bolt tab broken
EPA-MW-23	64.20	7:44	No Bolts
EPA-MW-26	59.09	8:04	No Bolts
EPA-MW-27	51.38	8:13	No Bolts
EPA-MW-9A	63.57	8:17	No Bolts, HW rim broken, pos too high
ST-MW-11	59.41	8:22	No Bolts
ST-MW-12	70.99	7:50	No Bolts
ST-MW-13	86.18	7:57	No Bolts
ST-MW-14	55.08	8:11	No Bolts, bolt tabs broken
ST-MW-15	72.76	7:53	No Bolts
ST-MW-16	54.85	7:54	No Bolts
ST-MW-17	70.34	10:04	No Bolts
ST-MW-18	73.21	7:49	No Bolts, bolt tabs broken
ST-MW-19	66.44	8:16	No Bolts
ST-MW-20	71.20	11:35	No Bolt

**Stanton Cleaners Area Superfund Site  
Water Level Data Summary**

**Site:** Stanton Cleaners Area Superfund Site

**Date:** 2-23-21

**Location:** 110 Cutter Mill Road, Great Neck, NY

**Project #:** DEC 10030M

**Field Personnel:** DSA/CJL

Well ID	Depth to Water (feet)	Time	Notes
EPA-MW-11D	—		Unable to locate under large snow pile
EPA-MW-21R	66.22	10:01A	
EPA-MW-23	64.28	7:46A	
EPA-MW-26	59.15	8:01A	
EPA-MW-27	51.44	9:46A	
EPA-MW-9A	63.65	8:47A	
ST-MW-11	58.54	8:33	
ST-MW-12	—		Unable to locate under large snow pile
ST-MW-13	86.30	12:02p	
ST-MW-14	55.00	9:43A	
ST-MW-15	73.35	8:22A	
ST-MW-16	55.08	7:55A	
ST-MW-17	70.48	9:35A	
ST-MW-18	73.57	11:34A	
ST-MW-19	66.61	9:03A	
ST-MW-20	72.38	11:41A	

**Stanton Cleaners Area Superfund Site  
Water Level Data Summary**

**Site:** Stanton Cleaners Area Superfund Site

**Date:** 3-18-2021

**Location:** 110 Cutter Mill Road, Great Neck, NY

**Project #:** DEC1003.0M

**Field Personnel:** Dave Adam

Well ID	Depth to Water (feet)	Time	Notes
EPA-MW-11D	58.74'	7:44A	
EPA-MW-21R	66.27'	7:28A	
EPA-MW-23	64.27'	8:26A	
EPA-MW-26	59.15'	7:32A	
EPA-MW-27	51.46'	9:06A	
EPA-MW-9A	63.64'	8:17A	
ST-MW-11	58.50'	7:47A	
ST-MW-12	71.12'	7:54A	
ST-MW-13	86.31'	8:12A	
ST-MW-14	54.96'	9:03A	
ST-MW-15	73.22'	8:08A	
ST-MW-16	54.98'	8:46A	
ST-MW-17	70.49'	7:52A	
ST-MW-18	73.16'	8:00A	
ST-MW-19	66.52'	8:03A	
ST-MW-20	71.12'	7:50A	

# APPENDIX E

## Fire Safety Reports

Fire Safety Inspection Log  
 Stanton Dry Cleaners Site  
 NYSDEC Site No. 130072  
 110 Cutter Mill Road, Great Neck, NY

Monthly Fire Safety Inspection Items		
Item	Description	Result
1	Exit signs internally or externally illuminated	Yes
2	Smoke alarms tested and functioning	Yes
3	Water leaks/water damage observed inside building	No
4	Fire extinguishers within expiration or inspected annually	Yes
5	All fire extinguishers present	Yes
6	Electrical Breaker Panel Issues	Yes
7	Covers present on all junction boxes, electrical switches, and outlets	Yes
8	Any evidence of pests present inside building (rodents, insects, etc.)	No
9	Emergency lighting tested and functioning	Yes

Periodic System Testing and Inspection			
Item	Description	Frequency	Date Last Performed
10	Sprinkler system testing	Annual	
11	Battery powered emergency lighting tested	Annual	
12	Fire Extinguishers annual inspection	Annual	
13	Emergency Lighting Testing	Monthly	

Inspected By: *Dave Adam*  
 Inspection Date: *1-20-2021*

Other Items Noted:



Fire Safety Inspection Log  
Stanton Dry Cleaners Site  
NYSDEC Site No. 130072  
110 Cutter Mill Road, Great Neck, NY

2-23-21

Monthly Fire Safety Inspection Items			
Item	Description	Result	
1	Exit signs internally or externally illuminated	<u>Yes</u>	No
2	Smoke alarms tested and functioning	<u>Yes</u>	No
3	Water leaks/water damage observed inside building	Yes	<u>No</u>
4	Fire extinguishers within expiration or inspected annually	<u>Yes</u>	No
5	All fire extinguishers present	Yes	No
6	Electrical Breaker Panel Issues	Yes	<u>No</u>
7	Covers present on all junction boxes, electrical switches, and outlets	<u>Yes</u>	No
8	Any evidence of pests present inside building (rodents, insects, etc.)	Yes	<u>No</u>
9	Emergency lighting tested and functioning	<u>Yes</u>	No

Periodic System Testing and Inspection				
Item	Description	Frequency	Date Last Performed	Date Due
10	Sprinkler system testing	Annual		
11	Battery powered emergency lighting tested	Annual		
12	Fire Extinguishers annual inspection	Annual		
13	Emergency Lighting Testing	Monthly	2-23-21	

Inspected By:

Inspection Date:

Other Items Noted:

Fire Safety Inspection Log  
 Stanton Dry Cleaners Site  
 NYSDEC Site No. 130072  
 110 Cutter Mill Road, Great Neck, NY

3-18-2021

Monthly Fire Safety Inspection Items		
Item	Description	Result
1	Exit signs internally or externally illuminated	Yes No
2	Smoke alarms tested and functioning	Yes No
3	Water leaks/water damage observed inside building	Yes No
4	Fire extinguishers within expiration or inspected annually	Yes No
5	All fire extinguishers present	Yes No
6	Electrical Breaker Panel Issues	Yes No
7	Covers present on all junction boxes, electrical switches, and outlets	Yes No
8	Any evidence of pests present inside building (rodents, insects, etc.)	Yes No
9	Emergency lighting tested and functioning	Yes No

Periodic System Testing and Inspection			
Item	Description	Frequency	Date Last Performed Date Due
10	Sprinkler system testing	Annual	
11	Battery powered emergency lighting tested	Annual	
12	Fire Extinguishers annual inspection	Annual	
13	Emergency Lighting Testing	Monthly	3-17-21

Inspected By:

Inspection Date:

Other Items Noted: