

130073
114

New York State Department of Environmental Conservation
Division of Environmental Remediation, Room 260B
50 Wolf Road, Albany, New York 12233-7010
Phone: (518) 457-5861 FAX: (518) 485-8404

bcc: w/ enclosure
J. Yavonditte
S. King
B. Becherer, Region 1
D. Norvik (2)
bcc: w/o enclosure
M. O'Toole (2)
D. Weigel
R. Koelling
R. Knizek
B. Moulhem
B. Schneck, Region 1
Dayfile

OCT 22 1998

Mr. Thomas F. Maher, P.E.
Dvirka & Bartilucci Consulting Engineers
330 Crossways Park Drive
Woodbury, NY 11797-2015



Dear Mr. Maher:

Re: State Superfund Standby Contract
Work Plan Approval
Work Assignment #D003600-7
Fulton Avenue, Site #1-30-073

This is to acknowledge receipt of the work plan dated August 1998 for the above-referenced project. The subject work plan is for an Interim Remedial Measure at the above-mentioned site. The Department hereby approves the work plan and authorizes Dvirka & Bartilucci Consulting Engineers to proceed with the project.

The following constitutes the budget for this work assignment:

Prior approved work plan budget	\$ 0
Approved increase in budget for this work plan	\$170,318
Total approved work plan budget	\$170,318
Unapproved budget items	\$ 0
Total work assignment budget	\$170,318

You are authorized to expend only approved budget funds. These funds will not be available for payment until the Office of the State Comptroller (OSC) approves the work plan. This process takes approximately four weeks. Unapproved budget items must be included in a revised work plan budget and receive written Department approval before expenditure.

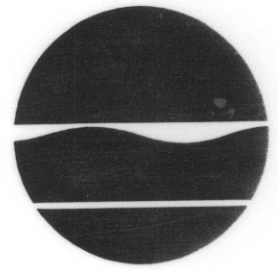
Your firm is hereby given notice to proceed with the work described in this work assignment. All work described shall be completed according to the schedule in the approved work plan.

If you have any questions or comments, please contact Joseph Yavonditte, Project Manager, at (518) 457-9285.

Sincerely,

Michael J. O'Toole, Jr.
Director
Division of Environmental Remediation

114
130013



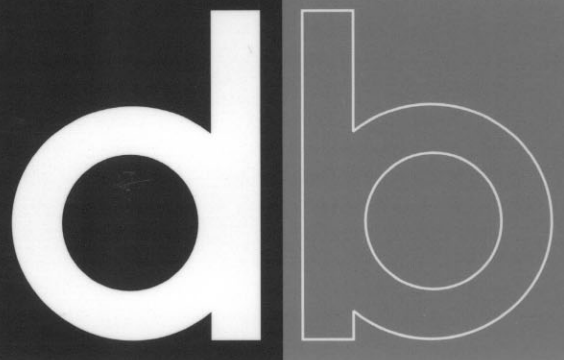
INTERIM REMEDIAL MEASURE
DESIGN AND CONSTRUCTION INSPECTION

WORK PLAN

Fulton Avenue Site
(Garden City Park Industrial Area)
Town of North Hempstead, Nassau County
(Site Registry No. 1-30-073)

WORK ASSIGNMENT NO. D003600-7

Remed.



Dvirka and Bartilucci
Consulting Engineers

AUGUST 1998

APPROVED
SKK 10/5/98

APPROVED
11/15/98

**INTERIM REMEDIAL MEASURE
DESIGN AND CONSTRUCTION INSPECTION
WORK PLAN**

**FULTON AVENUE SITE
(GARDEN CITY PARK INDUSTRIAL AREA)
TOWN OF NORTH HEMPSTEAD
NASSAU COUNTY, NEW YORK**

WORK ASSIGNMENT NO. D003600-7

PREPARED FOR

**NEW YORK STATE DEPARTMENT
OF ENVIRONMENTAL CONSERVATION**

BY

**DVIRKA AND BARTILUCCI CONSULTING ENGINEERS
WOODBURY, NEW YORK**

AUGUST 1998

RECEIVED
OCT 27 1998
HAZARDOUS WASTE REMEDIATION
NYSDEC REGION 1

RECEIVED
AUG 28 1998
BUREAU OF
CONSTRUCTION SERVICES

**INTERIM REMEDIAL MEASURE
DESIGN AND CONSTRUCTION INSPECTION
WORK PLAN**

**FULTON AVENUE SITE
(GARDEN CITY PARK INDUSTRIAL AREA)**

TABLE OF CONTENTS

<u>Section</u>	<u>Title</u>	<u>Page</u>
1.0	INTRODUCTION.....	1-1
2.0	BACKGROUND INFORMATION.....	2-1
3.0	SCOPE OF WORK.....	3-1
3.1	Task 1 - Preparation of Work Plan Amendment.....	3-1
3.2	Task 2 - Plans and Specifications (Contract Documents).....	3-1
3.3	Task 3 - Construction and Operations Cost Estimate.....	3-2
3.4	Task 4 - Pre-award Services.....	3-2
3.5	Task 5 - Attendance at Preconstruction Meeting.....	3-2
3.6	Task 6 - Review of Submittals.....	3-3
3.7	Task 7 - Construction and Operation Inspection.....	3-3
3.8	Task 8 - Records and Reports.....	3-4
3.9	Task 9 - Public Participation.....	3-5
3.10	Task 10 - Project Meetings.....	3-5
3.11	Task 11 - Project Completion Report.....	3-6
3.12	Task 12 - Coordination with Source Area Remediation.....	3-6
4.0	PROJECT MANAGEMENT.....	4-1
4.1	Project Schedule and Key Milestones/Reports.....	4-2
4.2	Project Organization and Key Personnel.....	4-3
5.0	SCHEDULE 2.11s.....	5-1

List of Figures

1-1	Site Location Map.....	1-2
2-1	Site Plan.....	2-2
2-2	Conceptual Site Plan for Groundwater IRM.....	2-3

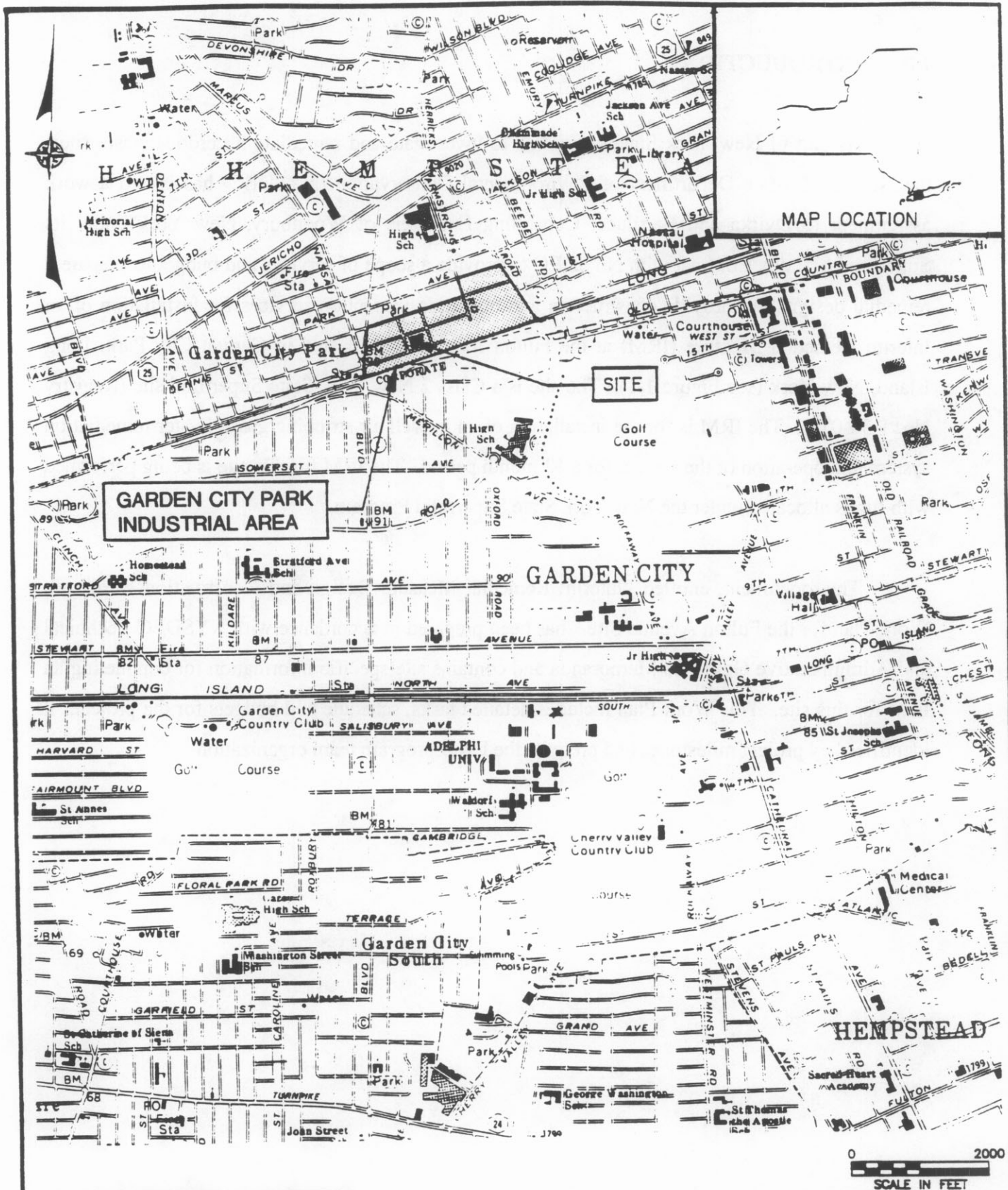
TABLE OF CONTENTS (continued)

<u>Section</u>	<u>Title</u>	<u>Page</u>
4-1	Project Schedule.....	4-2
4-2	Project Team Organization.....	4-3

1.0 INTRODUCTION

As part of New York State's program to investigate and remediate hazardous waste sites, the New York State Department of Environmental Conservation (NYSDEC) has issued a work assignment to Dvirka and Bartilucci Consulting Engineers of Woodbury, New York under its Superfund Standby Contract with NYSDEC to provide a scope of services and budget to prepare a remedial design, and provide construction and operation inspection services for installation of an Interim Remedial Measure (IRM) at the Fulton Avenue Site located in Garden City Park, Long Island, New York (see Figure 1-1). The site is a Class 2 New York State Superfund site (Registry No. 1-30-073). The IRM is for the installation of an in-well air stripping groundwater remediation system and operation of the system for a 12 month period. The IRM for this site is being performed with funds allocated under the New York State Superfund Program.

This document, entitled "Interim Remedial Measure Design and Construction Inspection Work Plan for the Fulton Avenue Site," has been prepared in accordance with NYSDEC Technical and Administrative Guidance Memoranda and contains site-specific information for conducting an IRM for this site. This Work Plan includes detailed tasks, schedule and budgets for the project. It identifies key project milestones and presents the D&B program team organization.



SOURCE: NYSOT LYNBROOK, N.Y. QUADRANGLE

FULTON AVENUE
 (GARDEN CITY PARK INDUSTRIAL AREA) SITE
 TOWN OF NORTH HEMPSTEAD, NEW YORK

SITE LOCATION MAP



Dvirka and Bartilucci
 Consulting Engineers

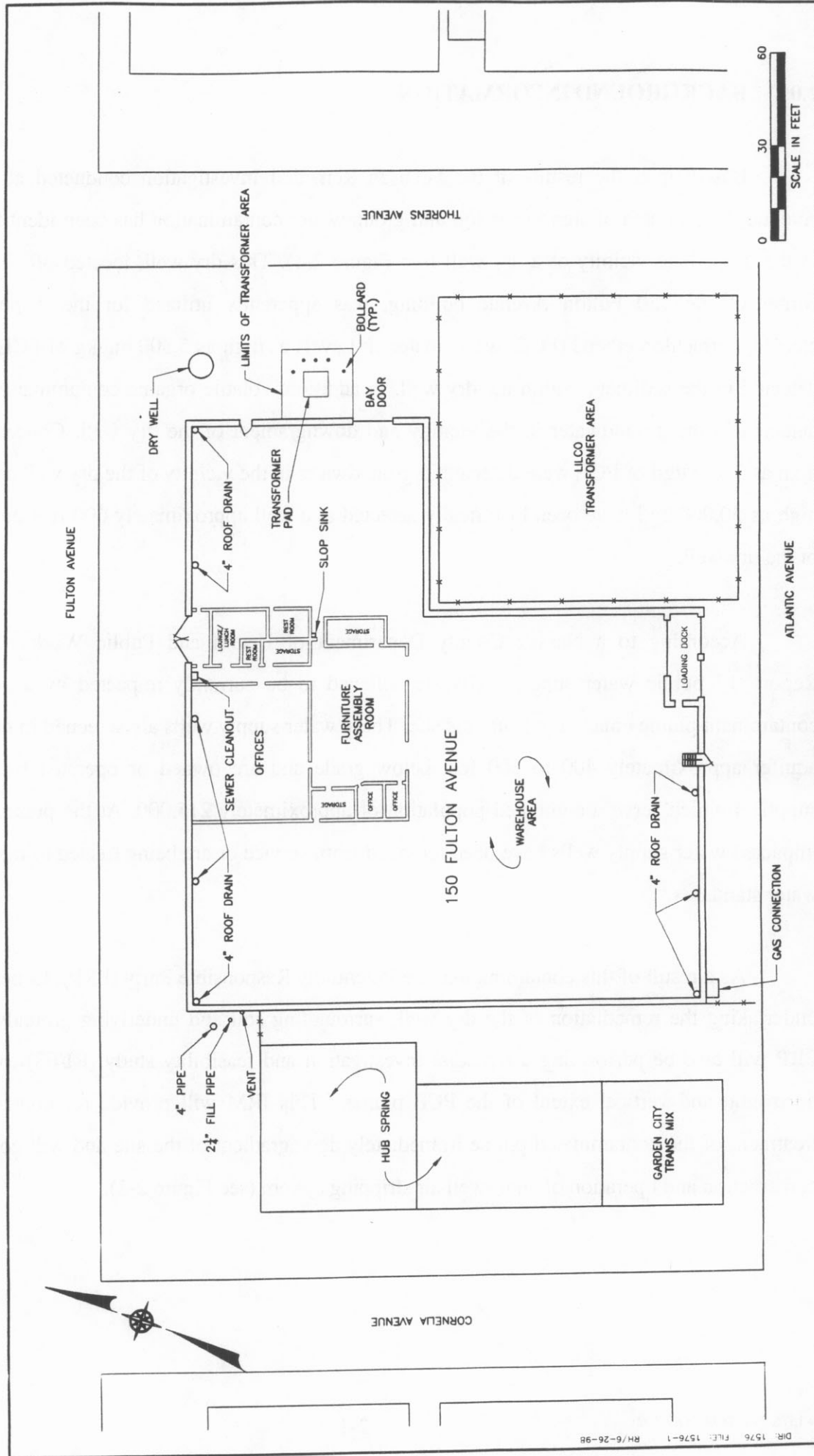
FIGURE 1-1

2.0 BACKGROUND INFORMATION

Based upon the results of the Focused Remedial Investigation conducted at the Fulton Avenue Site, an area of significant soil and groundwater contamination has been identified on site in the immediate vicinity of a dry well (see Figure 2-1). This dry well, located off the northeast corner of the 150 Fulton Avenue building, was apparently utilized for the disposal of dry cleaning/tetrachloroethene (PCE) waste material. Levels as high as 5,300 mg/kg of PCE have been detected in the sediment within the dry well. In addition, volatile organic contamination has been detected in the groundwater in the vicinity and downgradient of the dry well. Concentrations as high as 7,900 ug/l of PCE were detected in groundwater in the vicinity of the dry well and levels as high as 50,000 ug/l have been historically detected at a well approximately 600 feet downgradient of the dry well.

According to a Nassau County Department of Health and Public Works Cooperative Report, 17 public water supply wells are believed to be currently impacted by a groundwater contaminant plume emanating from this site. These water supply wells are screened in the Magothy aquifer approximately 400 to 500 feet below grade and are owned or operated by five water suppliers which serve a combined population of approximately 215,000. At the present time, the impacted water supply wells have been removed from service or are being treated to meet drinking water standards.

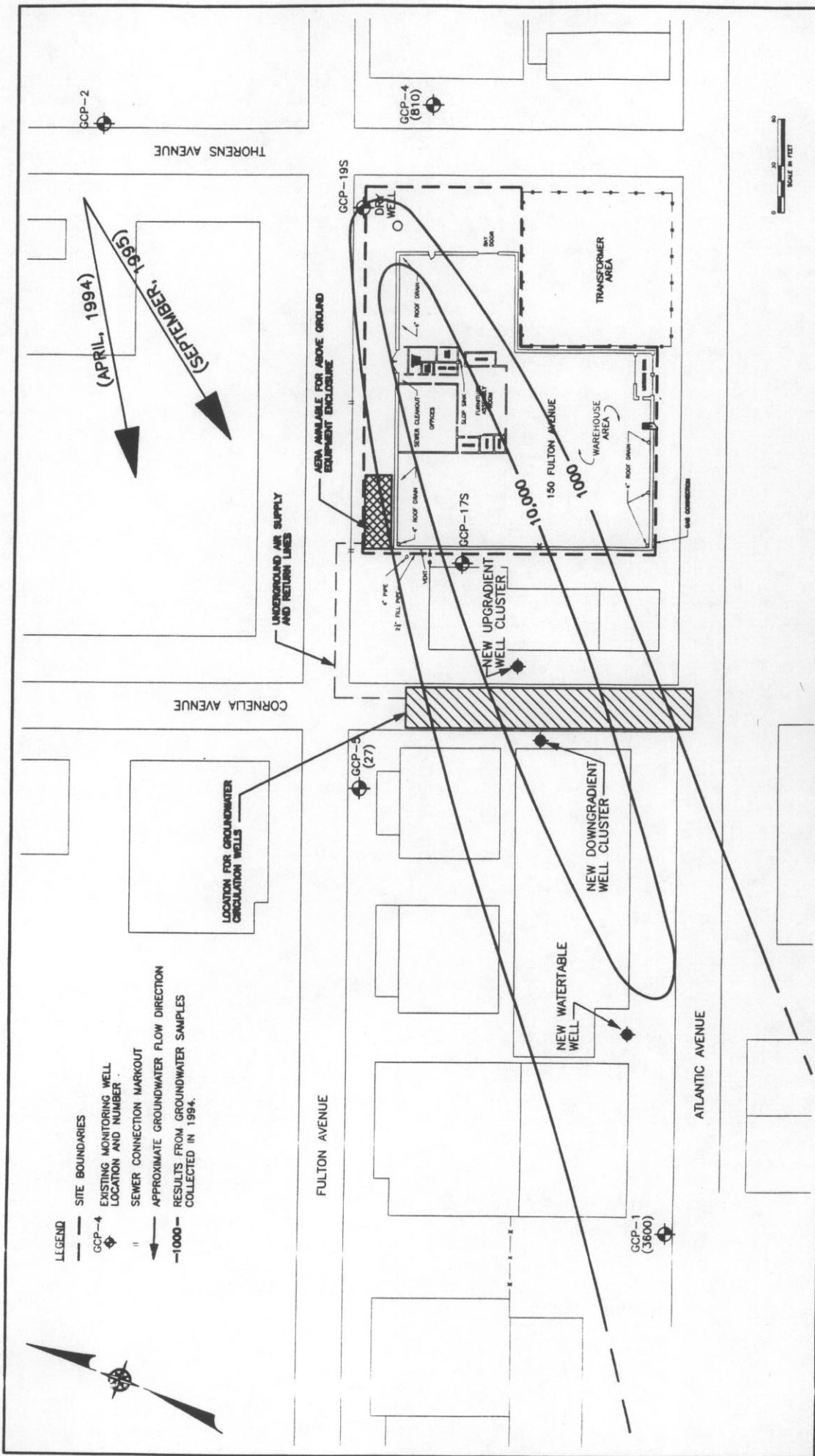
As a result of this contamination, the Potentially Responsible Party (PRP), Genesco, Inc., is undertaking the remediation of the dry well, surrounding soil and underlying groundwater. The PRP will also be performing a remedial investigation and feasibility study (RI/FS) to define the horizontal and vertical extent of the PCE plume. This IRM will provide for containment and treatment of the contaminated plume immediately downgradient of the site and will consist of the construction and operation of an in-well air stripping system (see Figure 2-2).



FULTON AVENUE
 (GARDEN CITY PARK INDUSTRIAL AREA) SITE
 TOWN OF NORTH HEMPSTEAD, NEW YORK

SITE PLAN

FIGURE 2-1



FULTON AVENUE
 (GARDEN CITY PARK INDUSTRIAL AREA) SITE
 TOWN OF NORTH HEMPSTEAD, NEW YORK
**CONCEPTUAL SITE PLAN
 FOR GROUNDWATER IRM**

DATE: 12/15/98
 FILE: 15672
 PROJECT: 15672

3.0 SCOPE OF WORK

The services to be provided by Dvirka and Bartilucci Consulting Engineers (D&B) include preparation of contract documents for procurement of a remedial contractor, construction oversight and the monitoring of an in-well air stripping Interim Remedial Measure (IRM). Presented below is a description of the tasks to be performed in connection with the IRM.

3.1 Task 1 - Preparation of Work Plan

This task involves preparation of this work plan. This task also includes discussions with the New York State Department of Environmental Conservation (NYSDEC) leading to the preparation and finalization of this work plan.

3.2 Task 2 - Plans and Specifications (Contract Documents)

Draft and final performance based specifications and drawings will be prepared for the purpose of competitively bidding the IRM in conformance with the NYSDEC Standard Contract Documents. The specifications will be based on the performance criteria developed for the IRM. The Contract Documents will be biddable and will contain a bid schedule; limited construction, startup, operation, maintenance and monitoring requirements; remediation criteria; contractor qualification and experience requirements; specifications for mobilization and demobilization and control of noise, emissions and condensate; as well as submittal requirements, including preparation of a site-specific sampling and analysis plan (SAP), quality assurance/quality control (QA/QC) plan and a site-specific health and safety plan (HASP). Prior to submission to NYSDEC the Contract Documents will be reviewed by D&B with specific consideration to a bidder's ability to provide a responsive bid.

Four (4) copies of draft plans and specifications will be provided to NYSDEC for review and comment. D&B will meet with the NYSDEC in Albany to review comments on the draft

submittal and based upon the comments will provide seven (7) copies of the final contract document to NYSDEC.

3.3 Task 3 - Construction and Operations Cost Estimate

A detailed construction and operations cost estimate will be prepared under this task prior to advertising the contract document for bid. The estimate will be prepared on a bid item basis as provided in the bid schedule developed in Task 2 in order to provide an estimate for each bid item. The estimated quantities on the bid schedule in the final contract document will be utilized to provide a total engineering cost estimate for construction and operation of the IRM.

Four (4) copies of a draft construction and operations cost estimate will be submitted to NYSDEC for review and comment. D&B will meet with the NYSDEC in Albany to review comments on the draft estimate and based upon the comments will submit seven (7) copies of the final cost estimate to NYSDEC.

3.4 Task 4 - Pre-award Services

As part of this task, assistance will be provided to NYSDEC in conducting a prebid conference and site visit, preparation of necessary addenda to the plans and specifications, and a review of the bids. Seventy five (75) copies of the bid documents have been budgeted to be provided to the NYSDEC for sale to prospective bidders. Following the receipt of bids, a bid tabulation will be prepared and a recommendation for award of the remedial contract will be submitted to NYSDEC.

3.5 Task 5 - Attendance at Preconstruction Meeting

Representatives of D&B will attend a preconstruction meeting to initiate the construction phase of the project. It is assumed that the preconstruction meeting will be held at D&B's offices in Woodbury, New York. The focus of this meeting will be to finalize the contractor's schedule

and formats for progress payment requests, reports, project correspondence, all other submittals and procedures for communications. Meeting minutes will be prepared and distributed by D&B.

3.6 Task 6 - Review of Submittals

Contractor submittals will be reviewed for compliance with the requirements of the contract document. Prior to construction start-up, the contractor's health and safety sampling and analysis and QA/QC plan will be reviewed. This task will also include review of results of soil, groundwater, and startup test reports, monthly progress payment requests, monthly progress reports, performance monitoring reports, change order requests and any other documents generated by the contractor in connection with this project. Copies of submittals will be provided to NYSDEC, as requested.

3.7 Task 7 - Construction and Operation Inspection

Full-time on-site inspection services will be provided during the construction and startup phases of the IRM. The work will be monitored for conformance with the approved design by inspecting the construction activities. During the construction and start-up phases, D&B will hold weekly progress meetings with the contractor to discuss project issues, performance and schedule. D&B will prepare and issue minutes of these meetings to those in attendance. The construction phase is estimated to take two (2) months and the startup phase is estimated to take one (1) week. Monthly inspections during the 12-month operating period will also be provided. Depending upon operational performance, NYSDEC may require additional inspections. Such inspections have not been budgeted and would require an amendment to the budget. At the completion of the operating period, a punch list inspection will be conducted to identify remaining work items to be completed followed by a final inspection to determine if all work has been completed and to verify that the requirements of the contract documents have been satisfied.

At the completion of the construction phase D&B will have a survey prepared to document the horizontal and vertical locations of the new wells installed under the IRM. The

level of effort for the survey is based upon two new upgradient well clusters (2 wells each), two groundwater circulation wells and one new water table well. The well survey locations will not be tied into the New York State Plan Coordinate System due to the distance (2000'+) to the nearest reference point.

3.8 Task 8 - Records and Reports

Complete and detailed records will be maintained as required by NYSDEC related to construction and operation activities. The complete original records will become the property of NYSDEC at the completion of the project. These records and reports will include the following:

- Daily inspection logs and daily contractor work completion reports.
- Work completed and important conversations.
- Listing and use of contractor's personnel, material and equipment which allows for quantification of the contractor's production.
- Records documenting the contractor's deviation from the specifications and approved submittals including descriptions of actions and resolutions.
- Unusual circumstances (weather conditions, environmental problems, health and safety hazards encountered, etc.)
- General files including correspondence and other documentation related to the project.
- Program meeting minutes with documentation on resolution of issues.
- Record of submittals.
- Construction photographs. Photographs will be taken of the work during its progress and at completion of the work. Each photograph will have attached to its backing a label containing the project name, engineer's name, site number, short description of view, photograph number and date taken. Also, photographs before work begins and other situations where disputes may arise with the public will be taken.
- Telephone logs and conversations.

3.9 Task 9 - Public Participation

Assistance with public participation activities will be provided to NYSDEC, as requested. For purposes of estimating work assignment costs, a limited public participation program is anticipated for this project with one public meeting planned prior to initiation of construction activities. It is not anticipated that a public participation plan, mailing list, information repositories or fact sheets will be required for this project. It is anticipated that NYSDEC will make arrangements and payment for a meeting facility, public notice/advertisement and mailings.

3.10 Task 10 - Project Meetings

D&B will attend the project meetings to be held at the NYSDEC office in Albany. Two such project meetings are planned to take place during the period of this work assignment. The first to be held to review NYSDEC comments on the draft construction plans and specifications. The second to be held to review NYSDEC comments on the draft construction and operations cost estimate. Other meetings which are included in other tasks are the following:

- Prebid conference and site visit.
- Preconstruction meeting at D&B's office.
- Eight weekly progress meetings during the 2-month construction period.
- A start-up meeting prior to the beginning of the 12-month operating period.
- Periodic meetings to coincide with D&B monthly operation inspection visits as the NYSDEC and D&B may require.
- A final inspection meeting.

3.11 Task 11 - Project Completion Report

This task will provide for the preparation of a final report to be submitted to NYSDEC. The report will present and discuss the results of the IRM and will provide recommendations with regard to implementation of in-well air stripping as a permanent remedial measure. Four (4) copies of a draft report will be provided for NYSDEC review and comment and seven (7) copies will be provided of the final report.

3.12 Task 12 - Coordination with Source Area Remediation

Under this task D&B will coordinate the in-well air stripping IRM construction and operation efforts as necessary with the ongoing source area remediation efforts being undertaken by others at the Fulton Avenue Site. This effort will include review of design documents and construction plans for the source area remediation and communications as necessary with the design engineer for the source area IRM in order to identify potential interferences between contractors during construction and operation of the source area and in-well air stripping IRMs. Based on this effort, appropriate provisions will be incorporated into the specifications and contract documents to coordinate the two projects during the construction and operation phases. In addition, during the operation phase, efforts will be made to identify the effects, if any, of the source area remediation program on the in-well air stripping system.

4.0 PROJECT MANAGEMENT

4.1 Project Schedule and Key Milestones/Reports

A project schedule is provided in Figure 4-1. Key milestones are identified in order to monitor work progress. Specific deadlines for completion of tasks and subtasks are established throughout the project to ensure timely completion of work. The following is the list of the milestones for this project:

1. Submittal of Draft Work Plan
2. Submittal of Draft Contract Documents for the IRM
3. Submittal of Draft Construction and Operation Cost Estimate
4. Submittal of Draft Final Report

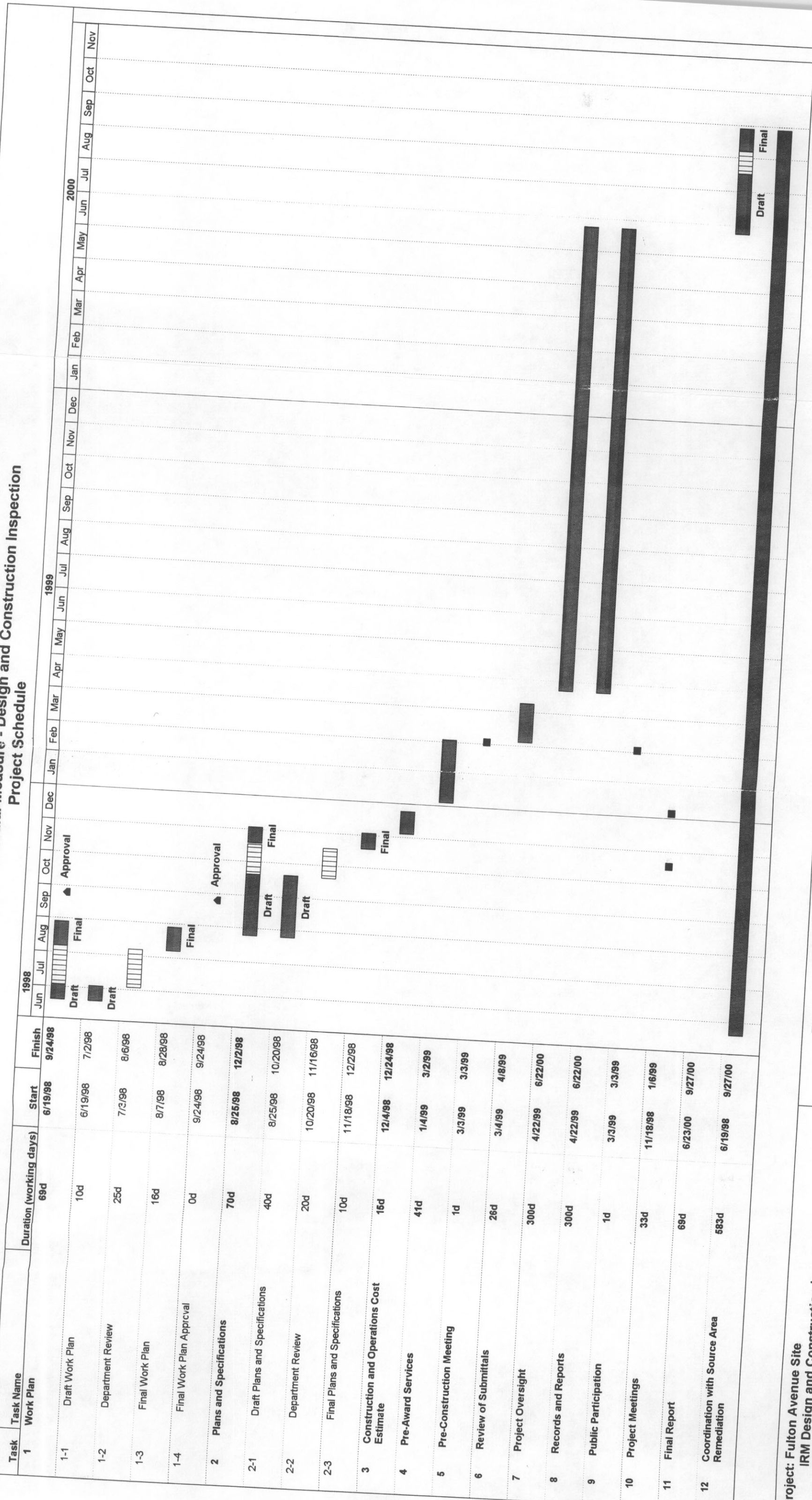
4.2 Project Management, Organization and Key Technical Personnel

Dvirka and Bartilucci Consulting Engineers will be the prime consultant responsible for performance of the interim remedial measure (IRM) design, construction, and inspection. Because of the nature of the work, only a limited number of subcontractors can be used on the project, including:

- YEC, Inc. (MBE) - surveying
- Nassau-Suffolk Blueprinting Co., Inc. (WBE) - document reproduction
- Stanley Computer Systems Inc. (WBE) - project records microfilming

The project organization for this IRM, illustrating both management and project responsibility functions for the project team and key personnel, is provided in Figure 4-2.

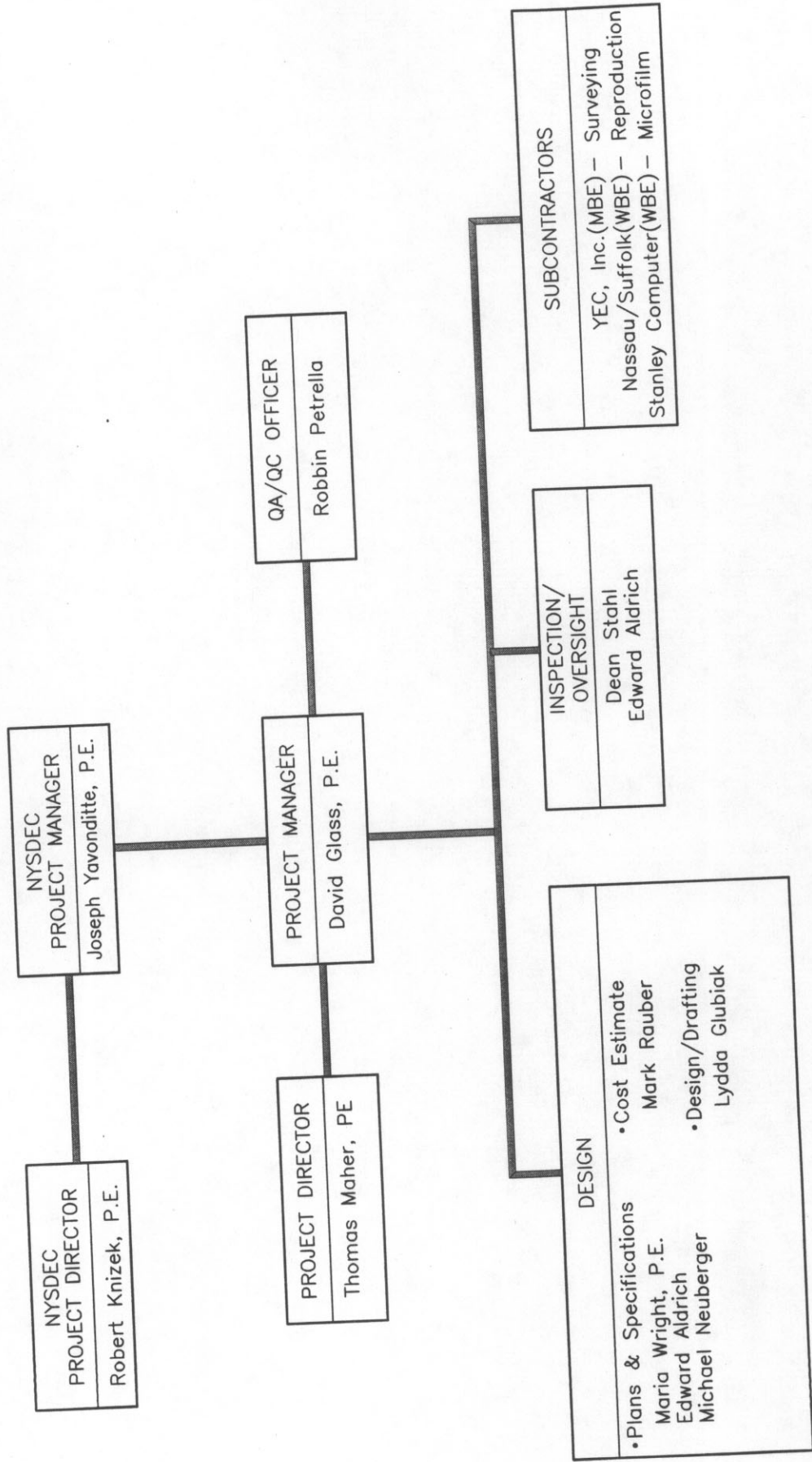
Interim Remedial Measure - Design and Construction Inspection
Project Schedule



Project: Fulton Avenue Site
IRM Design and Construction Inspection
Date: August 27, 1998

Task Department Review

FIGURE 4--2
PROJECT TEAM ORGANIZATION CHART
 FOR
FULTON AVENUE SITE
GARDEN CITY, NEW YORK



5.0 SCHEDULE 2.11s

SCHEDULE 2.11 (a)

Summary of Work Assignment Price
Fulton Avenue
(Garden City Park Industrial Area)

Work Assignment Number: D003600-7

1. Direct Salary Costs (Schedules 2.10 (a) and 2.11(b))	\$57,280	
2. Indirect Costs (Schedule 2.10 (g))	\$90,675	
3. Direct Non-Salary Costs (Schedules 2.11 (c) and (d))	\$2,030	
<u>Subcontract Costs</u>		
Cost-Plus-Fixed-Fee Subcontracts (Schedules 2.11(e))		
<u>Name of Subcontractor</u>	<u>Services To Be Performed</u>	<u>Subcontract Price</u>
YEC, Inc.	Survey and mapping	\$3,054
4. Total Cost-Plus-Fixed-Fee Subcontracts		\$3,054
Unit Price Subcontracts (Schedules 2.11(f))		
<u>Name of Subcontractor</u>	<u>Services To Be Performed</u>	<u>Subcontract Price</u>
1. Nassau - Suffolk Blueprinting Co., Inc.	Reproduction services	\$4,350
2. Stanley Computer Systems Inc.	Microfilm project files	\$500
5. Total Unit Price Subcontracts		\$4,850
6. Subcontract Management Fee		\$0
7. Total Subcontract Costs (lines 4 + 5 + 6)		\$7,904
8. Fixed Fee (Schedule 2.10 (h))		\$12,428
9. Total Work Assignment Price (lines 1 + 2 + 3 + 6 + 7 + 8)		\$170,318

SCHEDULE 2.11 (b)
SUMMARY

Work Assignment Number: D003600-7

NSPE	IX	VIII	VII	VI	V	IV	III	II	I	TOTAL HOURS
as of July 1, 1998	\$56.59			\$37.12	\$31.20	\$26.35	\$23.91	\$20.76		
as of July 1, 1999	\$58.29			\$38.23	\$32.14	\$27.14	\$24.63	\$21.38		
Task 1	4	0	0	24	0	8	0	36	0	72
Task 2	4	0	0	80	104	40	0	120	0	348
Task 3	2	0	0	24	20	24	0	8	0	78
Task 4	4	0	0	24	20	24	0	20	0	92
Task 5	0	0	0	12	8	0	0	4	0	24
Task 6	2	0	0	88	48	0	48	8	0	194
Task 7	12	0	0	88	100	0	320	32	0	552
Task 8	4	0	0	32	36	0	48	48	0	168
Task 9	2	0	0	16	16	0	0	24	0	58
Task 10	2	0	0	16	8	0	0	12	0	38
Task 11	2	0	0	40	28	0	100	44	0	214
Task 12	8	0	0	40	24	40	0	0	0	112
Subtotal 1998 Hours	34	0	0	368	298	136	208	248	0	1292
Subtotal 1999 Hours	12	0	0	116	114	0	308	108	0	658
Total Hours	46	0	0	484	412	136	516	356	0	1950
Total Direct Labor Cost	\$2,624	\$0	\$0	\$18,095	\$12,962	\$3,584	\$12,559	\$7,458	\$0	\$57,280

SCHEDULE 2.11 (c)
DIRECT NON-SALARY COSTS
SUMMARY

Work Assignment Number: D003600-7

ITEM	MAXIMUM REIMBURSEMENT RATE	UNIT	ESTIMATED NUMBER OF UNITS	TOTAL ESTIMATED COSTS
IN-HOUSE				
Express Mail	\$40.00	package	18	\$720.00
Photographs	\$350.00	lump sum	1	\$350.00
TRAVEL				
Transportation (Personal Car)	\$0.325	mile	2647	\$860.28
Tolls	\$50.00	trip	2	\$100.00
TOTAL DIRECT NON-SALARY COSTS				\$2,030.28

SCHEDULE 2.11 (d) 1

EQUIPMENT PURCHASED UNDER THE CONTRACT

Work Assignment Number: D003600-7

ITEM	ESTIMATED PURCHASE PRICE	O&M RATE (\$/per month)	TERM OF USAGE (MONTHS)	ESTIMATED USAGE COST (COL. 2 + [3X4])
None			TOTAL	\$0

**SCHEDULE 2.11 (d) 2
EQUIPMENT
CONSULTANT OWNED
SUMMARY**

Work Assignment Number: D003600-7

ITEM	PURCHASE PRICE X 85%	USAGE RATE (\$/day)	CAPITAL RECOVERY RATE (\$/Unit of Time)	O & M RATE (\$/Unit of Time)	ESTIMATED USAGE (days)	ESTIMATED USAGE COST (Col. 3x6)
None						
					TOTAL	\$0

Notes:

Usage Rate = Capital Recovery Rate + O&M rate

The maximum usage rate for an item of equipment reverts to the O&M rate when the total usage reimbursement exceed 85% of the purchase price.

SCHEDULE 2.11 (d) 3
EQUIPMENT
VENDOR RENTED
SUMMARY

Work Assignment Number: D003600-7

ITEM	MAXIMUM REIMBURSEMENT RATE	TIME PERIOD	ESTIMATED USAGE (period of time)	ESTIMATED USAGE COST (Col. 2 X 3)
None				
Total				\$0

SCHEDULE 2.11 (d) 4
EXPENDABLE SUPPLIES

Work Assignment Number: D003600-7

ITEM	ESTIMATED QUANTITY	UNITS	UNIT COST	TOTAL BUDGETED COST (COL. 2 X 3)
None			TOTAL	\$0

SCHEDULE 2.11 (d) 5
CONSUMABLE SUPPLIES
 Work Assignment Number: D003600-7

ITEM	ESTIMATED QUANTITY	UNIT COST	TOTAL BUDGETED COST (COL. 2 X 3)
None			TOTAL \$0

Schedule 2.11 (c)
 Cost Plus Fixed-Fee Subcontracts
 Sampling Survey
 Fulton Avenue Site

June 29, 1998

NAME OF SUBCONTRACTOR

YEC, INC.

SERVICES TO BE PERFORMED

SURVEY & MAPPING

SUBCONTRACT PRICE

\$3,053.79

A. Direct Salary Costs

<u>Professional Responsibility Level</u>	<u>Labor Classification</u>	<u>Average Reimbursement Rate (\$/Hr.)</u>		<u>Maximum Reimbursement Rate (\$/Hr.)</u>		<u>Estimated Number of Hours</u>	<u>Total Estimated Direct Salary Cost (\$)</u>
		1998		1998			
Principal	VIII	1998	45.64	1998	49.29	4	182.56
Senior Geologist/Scientist/ Engineer/ Licensed Surveyor	V	1998	30.17	1998	33.19	20	603.40
Staff Geologist/ Scientist/Engineer	IV	1998	26.22	1998	28.84	0	0.00
Staff Geologist/ Scientist/Engineer/CAD Operator	III	1998	22.75	1998	25.25	6	136.50
Senior Technician/Staff Engineer/Scientist/Geologist	II	1998	16.84	1998	18.86	12	202.08
Technician/Draftsperson	I	1998	15.26	1998	17.09	0	0.00
Total Direct Salary Costs:							1,124.54

B. Indirect Costs - 117% of direct salary cost

Indirect Costs: 1,315.71

C. Maximum Reimbursement Rates for Direct Non-Salary Costs:

<u>Item</u>	<u>Maximum Reimbursement Rate</u>	<u>Estimated No. of Units</u>		
Survey Equipment Rental	65.00 /day	1 days	65.00	
CAD Computer	15.00 /hour	6 hours	90.00	
Mileage	0.315 /mile	100 miles/trip	1 trips 31.50	
Tolls	11.00 per day	1 days	11.00	
Tele./Postage/Repro./Field supplies	50.00 lump sum		50.00	
Total Direct Non Salary Costs:				247.50

D. Fixed Fee (15% of Total Direct and Indirect Salary Costs)

Fixed Fee: 366.04

SCHEDULE 2.11 (f) 1

UNIT PRICE SUBCONTRACTS

Fulton Avenue (Garden City Park Industrial Area) Site
 Work Assignment Number: D003600-7

NAME OF SUBCONTRACTOR	SERVICES TO BE PERFORMED	SUBCONTRACT PRICE	MANAGEMENT FEE
Nassau - Suffolk Blueprinting	Reproduction Services	\$4,350.00	\$0.00
Item	Maximum Reimbursement Rate	Estimated No. of Units	Total Estimate Costs
Photocopying of Contract Documents and Reports Printing of Drawings, Binding, Dividers, and Covers	\$0.07 per copy	30000	\$2,100.00
	\$2.00 per drawing	1125	\$2,250.00
		Total	\$4,350.00

SCHEDULE 2.11 (f) 2

UNIT PRICE SUBCONTRACTS

Fulton Avenue (Garden City Park Industrial Area) Site

Work Assignment Number: D003600-7

NAME OF SUBCONTRACTOR	SERVICES TO BE PERFORMED	SUBCONTRACT PRICE	MANAGEMENT FEE
Item	Rate	Estimated No. of Units	Total Estimated Costs
Stanley Computer Systems, Inc.	Microfilm project file	\$500.00	\$0.00
Microfilm Project File	\$500.00 Lump Sum	1	\$500.00
Total			\$500.00

SCHEDULE 2.11 (g)

Project Name: Fulton Avenue (GCPIA)
 Work Assignment Number: D003600-7
 Task No./Name: All Tasks
 Complete: 0.00%

MONTHLY COST CONTROL REPORT SUMMARY OF FISCAL INFORMATION								
Expenditure Category	A Costs Claimed This Period	B Paid To Date	C Total Disallowed To Date	D Total Costs Incurred To Date (A+B+B1)	E Estimated Costs To Completion	F Total Work Assignment Price (A+B+E)	G Approved Budget	H Estimated Under/(Over) (G-F)
1. Direct Salary Costs	0.00	0.00	0.00	0.00	0.00	0.00	57,280	0.00
2. Indirect	0.00	0.00	0.00	0.00	0.00	0.00	90,675	0.00
3. Subtotal Direct Salary Costs and Indirect Costs	0.00	0.00	0.00	0.00	0.00	0.00	147,955	0.00
4. Travel	0.00	0.00	0.00	0.00	0.00	0.00	960	0.00
5. Other Non-Salary Costs	0.00	0.00	0.00	0.00	0.00	0.00	1,070	0.00
6. Subtotal Direct Non-Salary Costs	0.00	0.00	0.00	0.00	0.00	0.00	2,030	0.00
7. Subcontractors	0.00	0.00	0.00	0.00	0.00	0.00	7,904	0.00
8. Total Work Assignment Cost	0.00	0.00	0.00	0.00	0.00	0.00	157,889	0.00
9. Fixed Fee	0.00	0.00	0.00	0.00	0.00	0.00	12,428	0.00
10. Total Work Assignment Price	0.00	0.00	0.00	0.00	0.00	0.00	170,317	0.00

Date

Project Manager (Engineer)

Engineer: Dvirka & Barilucci
 Contract No.: D002708
 Project Name: Fulton Avenue (GCPIA)
 Work Assignment Number: D003600-7

Page 2 of 14
 Date Prepared:
 Billing Period:
 Invoice No.:

**SCHEDULE 2.11(g) SUPPLEMENTAL
 MONTHLY COST CONTROL REPORT
 SUBCONTRACTS**

Subcontract Name	Subcontract Costs Claimed this Application Including Resubmittals	Subcontract Costs Approved for Payment on Previous Application	Total Subcontract Costs to Date (A plus B)	Subcontract Approved Budget	Management Fee Budget	Management Fee Paid	Total Costs to Date
1. YEC, Inc. (MBE)	0.00	0.00	0.00	3,054.00	0.00	0.00	0.00
2. Nassau - Suffolk Blueprinting Co., Inc. (WBE)	0.00	0.00	0.00	4,350.00	0.00	0.00	0.00
3. Stanley Computer Systems Inc. (WBE)	0.00	0.00	0.00	500.00	0.00	0.00	0.00
Total				7,904.00	0.00	0.00	0.00

SCHEDULE 2.11 (g)

Page 3 of 14

Date Prepared:
Billing Period:
Invoice No.:

Project Name: Fulton Avenue (GCPIA) site
Work Assignment Number: D003600-7
Task No./Name: 1/ Preparation of Work Plan
Complete: 0.00%

Expenditure Category	MONTHLY COST CONTROL REPORT SUMMARY OF FISCAL INFORMATION							
	A Costs Claimed This Period	B Paid To Date	C Total Disallowed To Date	D Total Costs Incurred To Date (A+B+B1)	E Estimated Costs To Completion	F Total Work Assignment Price (A+B+E)	G Approved Budget	H Estimated Under/(Over) (G-F)
1. Direct Salary Costs	0.00	0.00	0.00	0.00	0.00	0.00	2,075	0.00
2. Indirect	0.00	0.00	0.00	0.00	0.00	0.00	3,285	0.00
3. Subtotal Direct Salary Costs and Indirect Costs	0.00	0.00	0.00	0.00	0.00	0.00	5,361	0.00
4. Travel	0.00	0.00	0.00	0.00	0.00	0.00	0	0.00
5. Other Non-Salary Costs	0.00	0.00	0.00	0.00	0.00	0.00	80	0.00
6. Subtotal Direct Non-Salary Costs	0.00	0.00	0.00	0.00	0.00	0.00	80	0.00
7. Subcontractors	0.00	0.00	0.00	0.00	0.00	0.00	0	0.00
8. Total Work Assignment Cost	0.00	0.00	0.00	0.00	0.00	0.00	5,441	0.00
9. Fixed Fee	0.00	0.00	0.00	0.00	0.00	0.00	450	0.00
10. Total Work Assignment Price	0.00	0.00	0.00	0.00	0.00	0.00	5,891	0.00

Date

Project Manager (Engineer)

Project Name: Fulton Avenue (GCP/A) site
 Work Assignment Number: D003600-7
 Task No./Name: 2/Plans and Specifications
 Complete: 0.00%

SCHEDULE 2.11(g)

Page 4 of 14
 Date Prepared:
 Billing Period:
 Invoice No.:

**MONTHLY COST CONTROL REPORT
 SUMMARY OF FISCAL INFORMATION**

	A Costs Claimed This Period	B Paid To Date	C Total Disallowed To Date	D Total Costs Incurred To Date (A+B+B1)	E Estimated Costs To Completion	F Total Work Assignment Price (A+B+E)	G Approved Budget	H Estimated Under/(Over) (G-F)
1. Direct Salary Costs	0.00	0.00	0.00	0.00	0.00	0.00	9,986	0.00
2. Indirect	0.00	0.00	0.00	0.00	0.00	0.00	15,808	0.00
3. Subtotal Direct Salary Costs and Indirect Costs	0.00	0.00	0.00	0.00	0.00	0.00	25,794	0.00
4. Travel	0.00	0.00	0.00	0.00	0.00	0.00	220	0.00
5. Other Non- Salary Costs	0.00	0.00	0.00	0.00	0.00	0.00	160	0.00
6. Subtotal Direct Non-Salary Costs	0.00	0.00	0.00	0.00	0.00	0.00	380	0.00
7. Subcontractors	0.00	0.00	0.00	0.00	0.00	0.00	150	0.00
8. Total Work Assignment Cost	0.00	0.00	0.00	0.00	0.00	0.00	26,324	0.00
9. Fixed Fee	0.00	0.00	0.00	0.00	0.00	0.00	2,167	0.00
10. Total Work Assignment Price	0.00	0.00	0.00	0.00	0.00	0.00	28,490	0.00

Project Manager (Engineer)

Date

Project Name: Fulton Avenue (GCPIA) site
 Work Assignment Number: D003600-7
 Task No./Name: 3/Construction and Operations Cost Estimate
 Complete: 0.00%

SCHEDULE 2.11(g)

Page 5 of 14
 Date Prepared:
 Billing Period:
 Invoice No.:

MONTHLY COST CONTROL REPORT SUMMARY OF FISCAL INFORMATION									
	A Costs Claimed This Period	B Paid To Date	C Total Disallowed To Date	D Total Costs Incurred To Date (A+B+B1)	E Estimated Costs To Completion	F Total Work Assignment Price (A+B+E)	G Approved Budget	H Estimated Under/(Over) (G-F)	
1. Direct Salary Costs	0.00	0.00	0.00	0.00	0.00	0.00	2,427	0.00	
2. Indirect	0.00	0.00	0.00	0.00	0.00	0.00	3,841	0.00	
3. Subtotal Direct Salary Costs and Indirect Costs	0.00	0.00	0.00	0.00	0.00	0.00	6,268	0.00	
4. Travel	0.00	0.00	0.00	0.00	0.00	0.00	200	0.00	
5. Other Non-Salary Costs	0.00	0.00	0.00	0.00	0.00	0.00	40	0.00	
6. Subtotal Direct Non-Salary Costs	0.00	0.00	0.00	0.00	0.00	0.00	240	0.00	
7. Subcontractors	0.00	0.00	0.00	0.00	0.00	0.00	0	0.00	
8. Total Work Assignment Cost	0.00	0.00	0.00	0.00	0.00	0.00	6,508	0.00	
9. Fixed Fee	0.00	0.00	0.00	0.00	0.00	0.00	526	0.00	
10. Total Work Assignment Price	0.00	0.00	0.00	0.00	0.00	0.00	7,034	0.00	

Project Manager (Engineer)

Date

Project Name: Fulton Avenue (GCPIA) site
 Work Assignment Number: D003600-7
 Task No./Name: 4/Pre-Award Services
 Complete: 0.00%

SCHEDULE 2.11(g)

Page 6 of 14
 Date Prepared:
 Billing Period:
 Invoice No.:

MONTHLY COST CONTROL REPORT SUMMARY OF FISCAL INFORMATION									
	A Costs Claimed This Period	B Paid To Date	C Total Disallowed To Date	D Total Costs Incurred To Date (A+B+B1)	E Estimated Costs To Completion	F Total Work Assignment Price (A+B+E)	G Approved Budget	H Estimated Under/(Over) (G-F)	
1. Direct Salary Costs	0.00	0.00	0.00	0.00	0.00	0.00	2,789	0.00	
2. Indirect	0.00	0.00	0.00	0.00	0.00	0.00	4,415	0.00	
3. Subtotal Direct Salary Costs and Indirect Costs	0.00	0.00	0.00	0.00	0.00	0.00	7,204	0.00	
4. Travel	0.00	0.00	0.00	0.00	0.00	0.00	20	0.00	
5. Other Non-Salary Costs	0.00	0.00	0.00	0.00	0.00	0.00	40	0.00	
6. Subtotal Direct Non-Salary Costs	0.00	0.00	0.00	0.00	0.00	0.00	60	0.00	
7. Subcontractors	0.00	0.00	0.00	0.00	0.00	0.00	3,600	0.00	
8. Total Work Assignment Cost	0.00	0.00	0.00	0.00	0.00	0.00	10,864	0.00	
9. Fixed Fee	0.00	0.00	0.00	0.00	0.00	0.00	605	0.00	
10. Total Work Assignment Price	0.00	0.00	0.00	0.00	0.00	0.00	11,469	0.00	

Project Manager (Engineer) _____ Date _____

Project Name: Fulton Avenue (GCP/A) site
 Work Assignment Number: D003600-7
 Task No./Name: 5/Attend Pre-Construction Meeting
 Complete: 0.00%

SCHEDULE 2.11(g)

Page 7 of 14
 Date Prepared:
 Billing Period:
 Invoice No.:

MONTHLY COST CONTROL REPORT SUMMARY OF FISCAL INFORMATION								
	A Costs Claimed This Period	B Paid To Date	C Total Disallowed To Date	D Total Costs Incurred To Date (A+B+B1)	E Estimated Costs To Completion	F Total Work Assignment Price (A+B+E)	G Approved Budget	H Estimated Under/(Over) (G-F)
1. Direct Salary Costs	0.00	0.00	0.00	0.00	0.00	0.00	778	0.00
2. Indirect	0.00	0.00	0.00	0.00	0.00	0.00	1,232	0.00
3. Subtotal Direct Salary Costs and Indirect Costs	0.00	0.00	0.00	0.00	0.00	0.00	2,010	0.00
4. Travel	0.00	0.00	0.00	0.00	0.00	0.00	20	0.00
5. Other Non-Salary Costs	0.00	0.00	0.00	0.00	0.00	0.00	40	0.00
6. Subtotal Direct Non-Salary Costs	0.00	0.00	0.00	0.00	0.00	0.00	60	0.00
7. Subcontractors	0.00	0.00	0.00	0.00	0.00	0.00	0	0.00
8. Total Work Assignment Cost	0.00	0.00	0.00	0.00	0.00	0.00	2,070	0.00
9. Fixed Fee	0.00	0.00	0.00	0.00	0.00	0.00	169	0.00
10. Total Work Assignment Price	0.00	0.00	0.00	0.00	0.00	0.00	2,239	0.00

Project Manager (Engineer) _____ Date _____

Project Name: Fulton Avenue (GCPIA) site
 Work Assignment Number: D003600-7
 Task No./Name: 6/Review of Submittals
 Complete: 0.00%

SCHEDULE 2.11(g)

Page 8 of 14
 Date Prepared:
 Billing Period:
 Invoice No.:

MONTHLY COST CONTROL REPORT SUMMARY OF FISCAL INFORMATION								
	A Costs Claimed This Period	B Paid To Date	C Total Disallowed To Date	D Total Costs Incurred To Date (A+B+C)	E Estimated Costs To Completion	F Total Work Assignment Price (A+B+E)	G Approved Budget	H Estimated Under/(Over) (G-F)
1. Direct Salary Costs	0.00	0.00	0.00	0.00	0.00	0.00	6,191	0.00
2. Indirect	0.00	0.00	0.00	0.00	0.00	0.00	9,801	0.00
3. Subtotal Direct Salary Costs and Indirect Costs	0.00	0.00	0.00	0.00	0.00	0.00	15,992	0.00
4. Travel	0.00	0.00	0.00	0.00	0.00	0.00	40	0.00
5. Other Non-Salary Costs	0.00	0.00	0.00	0.00	0.00	0.00	40	0.00
6. Subtotal Direct Non-Salary Costs	0.00	0.00	0.00	0.00	0.00	0.00	80	0.00
7. Subcontractors	0.00	0.00	0.00	0.00	0.00	0.00	150	0.00
8. Total Work Assignment Cost	0.00	0.00	0.00	0.00	0.00	0.00	16,222	0.00
9. Fixed Fee	0.00	0.00	0.00	0.00	0.00	0.00	1,343	0.00
10. Total Work Assignment Price	0.00	0.00	0.00	0.00	0.00	0.00	17,565	0.00

Project Manager (Engineer)

Date

Project Name: Fullon Avenue (GCPIA) site
 Work Assignment Number: D003600-7
 Task No./Name: 7/Project Inspection/Oversight
 Complete: 0.00%

SCHEDULE 2.11(g)

Page 9 of 14
 Date Prepared:
 Billing Period:
 Invoice No.:

MONTHLY COST CONTROL REPORT SUMMARY OF FISCAL INFORMATION									
	A	B	C	D	E	F	G	H	
	Costs Claimed This Period	Paid To Date	Total Disallowed To Date	Total Costs Incurred To Date (A+B+B1)	Estimated Costs To Completion	Total Work Assignment Price (A+B+E)	Approved Budget	Estimated Under/(Over) (G-F)	
1. Direct Salary Costs	0.00	0.00	0.00	0.00	0.00	0.00	15,612	0.00	
2. Indirect	0.00	0.00	0.00	0.00	0.00	0.00	24,714	0.00	
3. Subtotal Direct Salary Costs and Indirect Costs	0.00	0.00	0.00	0.00	0.00	0.00	40,327	0.00	
4. Travel	0.00	0.00	0.00	0.00	0.00	0.00	440	0.00	
5. Other Non-Salary Costs	0.00	0.00	0.00	0.00	0.00	0.00	160	0.00	
6. Subtotal Direct Non-Salary Costs	0.00	0.00	0.00	0.00	0.00	0.00	600	0.00	
7. Subcontractors	0.00	0.00	0.00	0.00	0.00	0.00	3,204	0.00	
8. Total Work Assignment Cost	0.00	0.00	0.00	0.00	0.00	0.00	44,131	0.00	
9. Fixed Fee	0.00	0.00	0.00	0.00	0.00	0.00	3,387	0.00	
10. Total Work Assignment Price	0.00	0.00	0.00	0.00	0.00	0.00	47,518	0.00	

Project Manager (Engineer) _____

Date _____

Project Name: Fulton Avenue (GCPIA) site
 Work Assignment Number: D003600-7
 Task No./Name: 8/Records and Reports
 Complete: 0.00%

SCHEDULE 2.11(g)

Page 10 of 14
 Date Prepared:
 Billing Period:
 Invoice No.:

MONTHLY COST CONTROL REPORT SUMMARY OF FISCAL INFORMATION								
	A Costs Claimed This Period	B Paid To Date	C Total Disallowed To Date	D Total Costs Incurred To Date (A+B+B1)	E Estimated Costs To Completion	F Total Work Assignment Price (A+B+E)	G Approved Budget	H Estimated Under/(Over) (G-F)
1. Direct Salary Costs	0.00	0.00	0.00	0.00	0.00	0.00	4,822	0.00
2. Indirect	0.00	0.00	0.00	0.00	0.00	0.00	7,633	0.00
3. Subtotal Direct Salary Costs and Indirect Costs	0.00	0.00	0.00	0.00	0.00	0.00	12,455	0.00
4. Travel	0.00	0.00	0.00	0.00	0.00	0.00	0	0.00
5. Other Non-Salary Costs	0.00	0.00	0.00	0.00	0.00	0.00	390	0.00
6. Subtotal Direct Non-Salary Costs	0.00	0.00	0.00	0.00	0.00	0.00	390	0.00
7. Subcontractors	0.00	0.00	0.00	0.00	0.00	0.00	150	0.00
8. Total Work Assignment Cost	0.00	0.00	0.00	0.00	0.00	0.00	12,995	0.00
9. Fixed Fee	0.00	0.00	0.00	0.00	0.00	0.00	1,046	0.00
10. Total Work Assignment Price	0.00	0.00	0.00	0.00	0.00	0.00	14,042	0.00

Project Manager (Engineer) _____ Date _____

Project Name: Fulton Avenue (GCPIA) site
 Work Assignment Number: D003600-7
 Task No./Name: 9/Public Participation
 Complete: 0.00%

SCHEDULE 2.11(g)

Page 11 of 14
 Date Prepared:
 Billing Period:
 Invoice No.:

MONTHLY COST CONTROL REPORT SUMMARY OF FISCAL INFORMATION								
	A Costs Claimed This Period	B Paid To Date	C Total Disallowed To Date	D Total Costs Incurred To Date (A+B+B1)	E Estimated Costs To Completion	F Total Work Assignment Price (A+B+E)	G Approved Budget	H Estimated Under/(Over) (G-F)
1. Direct Salary Costs	0.00	0.00	0.00	0.00	0.00	0.00	1,705	0.00
2. Indirect	0.00	0.00	0.00	0.00	0.00	0.00	2,698	0.00
3. Subtotal Direct Salary Costs and Indirect Costs	0.00	0.00	0.00	0.00	0.00	0.00	4,403	0.00
4. Travel	0.00	0.00	0.00	0.00	0.00	0.00	20	0.00
5. Other Non-Salary Costs	0.00	0.00	0.00	0.00	0.00	0.00	40	0.00
6. Subtotal Direct Non-Salary Costs	0.00	0.00	0.00	0.00	0.00	0.00	60	0.00
7. Subcontractors	0.00	0.00	0.00	0.00	0.00	0.00	0	0.00
8. Total Work Assignment Cost	0.00	0.00	0.00	0.00	0.00	0.00	4,463	0.00
9. Fixed Fee	0.00	0.00	0.00	0.00	0.00	0.00	370	0.00
10. Total Work Assignment Price	0.00	0.00	0.00	0.00	0.00	0.00	4,833	0.00

Project Manager (Engineer)

Date

Project Name: Fulton Avenue (GCPIA) site
 Work Assignment Number: D003600-7
 Task No./Name: 10/Project Meetings
 Complete: 0.00%

SCHEDULE 2.11(g)

Page 12 of 14
 Date Prepared:
 Billing Period:
 Invoice No.:

MONTHLY COST CONTROL REPORT SUMMARY OF FISCAL INFORMATION								
	A Costs Claimed This Period	B Paid To Date	C Total Disallowed To Date	D Total Costs Incurred To Date (A+B+B1)	E Estimated Costs To Completion	F Total Work Assignment Price (A+B+E)	G Approved Budget	H Estimated Under/(Over) (G-F)
1. Direct Salary Costs	0.00	0.00	0.00	0.00	0.00	0.00	1,206	0.00
2. Indirect	0.00	0.00	0.00	0.00	0.00	0.00	1,909	0.00
3. Subtotal Direct Salary Costs and Indirect Costs	0.00	0.00	0.00	0.00	0.00	0.00	3,115	0.00
4. Travel	0.00	0.00	0.00	0.00	0.00	0.00	0	0.00
5. Other Non- Salary Costs	0.00	0.00	0.00	0.00	0.00	0.00	0	0.00
6. Subtotal Direct Non-Salary Costs	0.00	0.00	0.00	0.00	0.00	0.00	0	0.00
7. Subcontractors	0.00	0.00	0.00	0.00	0.00	0.00	0	0.00
8. Total Work Assignment Cost	0.00	0.00	0.00	0.00	0.00	0.00	3,115	0.00
9. Fixed Fee	0.00	0.00	0.00	0.00	0.00	0.00	262	0.00
10. Total Work Assignment Price	0.00	0.00	0.00	0.00	0.00	0.00	3,376	0.00

Project Manager (Engineer) _____

Date _____

Project Name: Fulton Avenue (GCPIA) site
 Work Assignment Number: D003600-7
 Task No./Name: 11/Final Report
 Complete: 0.00%

SCHEDULE 2.11(g)

Page 13 of 14
 Date Prepared:
 Billing Period:
 Invoice No.:

MONTHLY COST CONTROL REPORT SUMMARY OF FISCAL INFORMATION								
	A Costs Claimed This Period	B Paid To Date	C Total Disallowed To Date	D Total Costs Incurred To Date (A+B+B1)	E Estimated Costs To Completion	F Total Work Assignment Price (A+B+E)	G Approved Budget	H Estimated Under/(Over) (G-F)
1. Direct Salary Costs	0.00	0.00	0.00	0.00	0.00	0.00	5,949	0.00
2. Indirect	0.00	0.00	0.00	0.00	0.00	0.00	9,418	0.00
3. Subtotal Direct Salary Costs and Indirect Costs	0.00	0.00	0.00	0.00	0.00	0.00	15,367	0.00
4. Travel	0.00	0.00	0.00	0.00	0.00	0.00	0	0.00
5. Other Non-Salary Costs	0.00	0.00	0.00	0.00	0.00	0.00	80	0.00
6. Subtotal Direct Non-Salary Costs	0.00	0.00	0.00	0.00	0.00	0.00	80	0.00
7. Subcontractors	0.00	0.00	0.00	0.00	0.00	0.00	650	0.00
8. Total Work Assignment Cost	0.00	0.00	0.00	0.00	0.00	0.00	16,097	0.00
9. Fixed Fee	0.00	0.00	0.00	0.00	0.00	0.00	1,291	0.00
10. Total Work Assignment Price	0.00	0.00	0.00	0.00	0.00	0.00	17,388	0.00

Project Manager (Engineer)

Date

Project Name: Fulton Avenue (GCPIA) site
 Work Assignment Number: D003600-7
 Task No./Name: 12/Coordination
 Complete: 0.00%

SCHEDULE 2.11(g)

Page 14 of 14
 Date Prepared:
 Billing Period:
 Invoice No.:

MONTHLY COST CONTROL REPORT SUMMARY OF FISCAL INFORMATION								
	A Costs Claimed This Period	B Paid To Date	C Total Disallowed To Date	D Total Costs Incurred To Date (A+B+B1)	E Estimated Costs To Completion	F Total Work Assignment Price (A+B+E)	G Approved Budget	H Estimated Under/(Over) (G-F)
1. Direct Salary Costs	0.00	0.00	0.00	0.00	0.00	0.00	3,740	0.00
2. Indirect	0.00	0.00	0.00	0.00	0.00	0.00	5,921	0.00
3. Subtotal Direct Salary Costs and Indirect Costs	0.00	0.00	0.00	0.00	0.00	0.00	9,661	0.00
4. Travel	0.00	0.00	0.00	0.00	0.00	0.00	0	0.00
5. Other Non- Salary Costs	0.00	0.00	0.00	0.00	0.00	0.00	0	0.00
6. Subtotal Direct Non-Salary Costs	0.00	0.00	0.00	0.00	0.00	0.00	0	0.00
7. Subcontractors	0.00	0.00	0.00	0.00	0.00	0.00	0	0.00
8. Total Work Assignment Cost	0.00	0.00	0.00	0.00	0.00	0.00	9,661	0.00
9. Fixed Fee	0.00	0.00	0.00	0.00	0.00	0.00	812	0.00
10. Total Work Assignment Price	0.00	0.00	0.00	0.00	0.00	0.00	10,473	0.00

Project Manager (Engineer)

Date

SCHEDULE 2.11 (h)

Date Prepared:
Billing Period
Invoice No.

Project Name: Fulton Avenue (GCP/A) Site
Work Assignment Number: D003600-7

Monthly Cost Control Report
Summary of Labor Hours
Expended to Date/Estimated To Completion

NSPE Labor Classification	IX		VIII		VII		VI		V		IV		III		I & II		ADMIN/ SUPPORT		TOTAL NUMBER OF DIRECT LABOR HOURS EXP/EST
	EXP/EST	EXP/EST	EXP/EST	EXP/EST	EXP/EST	EXP/EST	EXP/EST	EXP/EST	EXP/EST	EXP/EST	EXP/EST	EXP/EST	EXP/EST	EXP/EST	EXP/EST	EXP/EST	EXP/EST	EXP/EST	
Task 1	0/4	0/0	0/0	0/24	0/24	0/0	0/24	0/24	0/0	0/0	0/8	0/0	0/36	0/0	0/0	0/0	0/0	0/0	0/72
Task 2	0/4	0/0	0/0	0/80	0/80	0/0	0/80	0/104	0/0	0/40	0/0	0/120	0/0	0/0	0/0	0/0	0/0	0/0	0/348
Task 3	0/2	0/0	0/0	0/24	0/24	0/0	0/24	0/20	0/0	0/24	0/0	0/8	0/0	0/0	0/0	0/0	0/0	0/0	0/78
Task 4	0/4	0/0	0/0	0/24	0/24	0/0	0/24	0/20	0/0	0/24	0/0	0/20	0/0	0/0	0/0	0/0	0/0	0/0	0/92
Task 5	0/0	0/0	0/0	0/12	0/12	0/0	0/12	0/8	0/0	0/0	0/0	0/4	0/0	0/0	0/0	0/0	0/0	0/0	0/24
Task 6	0/2	0/0	0/0	0/88	0/88	0/0	0/88	0/48	0/0	0/0	0/0	0/8	0/0	0/0	0/0	0/0	0/0	0/0	0/194
Task 7	0/12	0/0	0/0	0/88	0/88	0/0	0/88	0/100	0/0	0/0	0/0	0/320	0/32	0/0	0/0	0/0	0/0	0/0	0/552
Task 8	0/4	0/0	0/0	0/32	0/32	0/0	0/32	0/36	0/0	0/0	0/0	0/48	0/48	0/0	0/0	0/0	0/0	0/0	0/168
Task 9	0/2	0/0	0/0	0/16	0/16	0/0	0/16	0/16	0/0	0/0	0/0	0/0	0/24	0/0	0/0	0/0	0/0	0/0	0/58
Task 10	0/2	0/0	0/0	0/16	0/16	0/0	0/16	0/8	0/0	0/0	0/0	0/0	0/12	0/0	0/0	0/0	0/0	0/0	0/38
Task 11	0/2	0/0	0/0	0/40	0/40	0/0	0/40	0/28	0/0	0/0	0/0	0/100	0/44	0/0	0/0	0/0	0/0	0/0	0/214
Task 12	0/8	0/0	0/0	0/40	0/40	0/0	0/40	0/24	0/0	0/40	0/0	0/0	0/0	0/0	0/0	0/0	0/0	0/0	0/112
Total Hours	0/46	0/0	0/0	0/484	0/484	0/0	0/484	0/412	0/0	0/136	0/516	0/356	0/0	0/0	0/0	0/0	0/0	0/0	0/1950

MBE/WBE
UTILIZATION PLAN
 Fulton Avenue (Garden City Park Industrial Area) Site
 Work Assignment Number: D003600-7

<u>Areas to be Subcontracted</u>	<u>Subcontractor Name</u>	<u>MBE/WBE</u>	<u>Total</u> <u>Subcontract</u> <u>Value</u>	<u>% MBE/WBE</u> <u>Utilization</u>
1. YEC, Inc.	Survey and Mapping	MBE	\$3,054.00	1.8%
2. Nassau - Suffolk Blueprinting	Reproduction	WBE	\$4,350.00	2.6%
3. Stanley Computer Systems, Inc.	Microfilm	WBE	\$500.00	0.29%
Total MBE Utilization	<u>MBE Subcontract Value</u>	=	<u>\$3,054</u>	1.79%
	<u>Total Contract Value</u>		<u>\$170,318</u>	
Total WBE Utilization	<u>WBE Subcontract Value</u>	=	<u>\$4,850</u>	2.8%
	<u>Total Contract Value</u>		<u>\$170,318</u>	