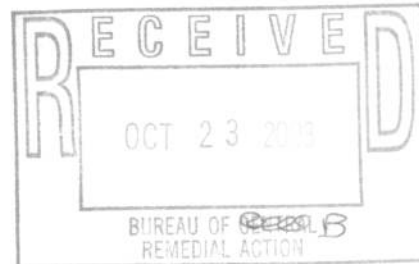


October 14, 2003

Mr. Thomas Gibbons
NYSDEC
Bureau of Eastern Remedial Action
625 Broadway 11th Floor
Albany, NY 12233-7015

RE: Pulsing Procedure Report # 3
Westbury Valet Cleaners
123 Post Ave
Westbury, NY 11590
Site ID# 130088



Dear Mr. Gibbons:

On September 23, 2003, Anson Environmental Ltd. (AEL) continued one-month pulsing cycles of the soil vapor extraction system (SVES) remediation of the Westbury Valet Cleaners, approved by the NYSDEC letter dated September 13, 2002.

Work Completed During the Monitoring Period (August 5, 2003 thru September 23, 2003)

AEL conducted monitoring as per instructions of the NYSDEC. On each visit AEL conducts the system check and collects air samples at extraction wells for analysis using an Organic Vapor Monitor (OVM).

AEL has performed system checks utilizing a dedicated O&M data sheet as well as keeping a log in a dedicated logbook of other activities that have occurred on site. Work completed at the site includes:

- The SVES wells RW1-S, RW2-S, RW3-S, and RW4-S have operated continuously at a full open position.
- Field screening of the pre-carbon, between carbons, and system exhaust air has been conducted utilizing an OVM. Carbon canisters were changed when OVM readings showed that breakthrough had occurred. A data sheet is attached in the Appendix A of this report.
- The wells have been monitored for flow and vacuum pressure. Data sheets for each well are attached in Appendix A.
- Field screening of the extraction wells has been conducted utilizing an OVM
- Remedial system performance air samples were collected by AEL utilizing Tedlar bags on September 23, 2003 at the pre-carbon (influent) and after the second carbon (effluent) locations.
- The SVE remedial system was shutdown on September 23, 2003 in accordance with the pulsing plan approved by the NYSDEC letter Dated September 13, 2002.

"Your Environmental Partner"

System Sampling Results

On September 23, 2003, AEL collected SVE air samples using five (5) liter Tedlar bags. Using EPA Method 8260, samples were analyzed by Environmental Testing Laboratories (ETL) in Farmingdale, NY. Influent and effluent air samples of the SVE remediation system were collected and denoted as "Pre-Carbon" and "Post Carbon", respectively. Detected compounds for pre-carbon and post carbon samples are summarized in Table 1 and laboratory analytical data sheets are located in Appendix C. The levels detected are to be utilized as background readings for the remainder of the pulsing procedure.

Anticipated October Work Items

- The SVES will be restarted the week of October 23, 2003 after AEL collects indoor air samples (perc badges) in the surrounding properties.
- A system check including recording vacuum pressure and flow for all extraction wells, OVM readings for the carbon filtration system, OVM readings for each extraction well, and other pertinent system readings will be conducted approximately one week after the system has been restarted.
- Tedlar air bag samples will be collected during the system check at the pre-carbon and exhaust locations. They will be analyzed utilizing EPA Method 8260 by ETL.

Please feel free to call Dean Anson or myself should you wish to discuss the above-presented information.

Very truly yours,



Matthew F. Schieferstein
Environmental Scientist

Cc:
Robert Cozzy, PE NYSDEC
Gary Litwin NYSDOH
Alali M. Tamuno, Esq. NYSDEE
John V Soderberg, Esq.
Peter Park Westbury Cleaners
Won Ho Choe Westbury Cleaners
Joseph DeFranco NCDOH
Becky Mitchell NYSDOH

Table I Air Bag Data

Pre-Carbon 9-23-03

Compound	CFM	M3/min	PPM	mg/M3	lb/hour	lb/year
Tetrachloroethene	210	5.9472	0.22703	1.54	0.001211	10.61252
c-1,2-Dichloroethene	210	5.9472	2.017535	8	0.006293	55.12996
Trichloroethene	210	5.9472	0.169326	0.91	0.000716	6.271033
t-1,2-Dichloroethene	210	5.9472	0.016645	0.066	5.19E-05	0.454822
1,1-Dichloroethane	210	5.9472	0	0	0	0
1,1,1,2-Tetrachloroethane	210	5.9472	0	0	0	0
1,1,1-Trichloroethane	210	5.9472	0	0	0	0

Post-Carbon 9-23-03

Compound	CFM	M3/min	PPM	mg/M3	lb/hour	lb/year
Tetrachloroethene	234	6.62688	0.008403	0.057	5E-05	0.437693
c-1,2-Dichloroethene	234	6.62688	0.019167	0.076	6.66E-05	0.58359
Trichloroethene	234	6.62688	0	0	0	0
t-1,2-Dichloroethene	234	6.62688	0	0	0	0
1,1-Dichloroethane	234	6.62688	0	0	0	0
1,1,1,2-Tetrachloroethane	234	6.62688	0	0	0	0
1,1,1-Trichloroethane	234	6.62688	0	0	0	0

Appendix A

Database Information Well and Carbon Readings Graphs for OVM Readings

Extraction Well Data September 2003 Second One Month Pulsing Data

RW1-S Field Data

Date	Vac (in H2O)	Flow (CFM)	PID (PPM)	Valve	Notes
9/23/03	8	41	0	Full	

RW2-S Field Data

Date	Vac (in H2O)	Flow (CFM)	PID (PPM)	Valve	Notes
9/23/03	8	65	2.5	Full	

RW3-S Field Data

Date	Vac (in H2O)	Flow (CFM)	PID (PPM)	Valve	Notes
9/23/03	14	>65	34.5	Full	

RW4-S Field Data

Date	Vac (in H2O)	Flow (CFM)	PID (PPM)	Valve	Notes
9/23/03	12	52	4.1	Full	

Exhaust System Readings
September 2003 Second One Month Pulsing Data

Pre-Carbon

Date	Flow (CFM)	OVM (PPM)	Temp	PSI (psi)	Notes
9/23/03	210	12.1	75	12	

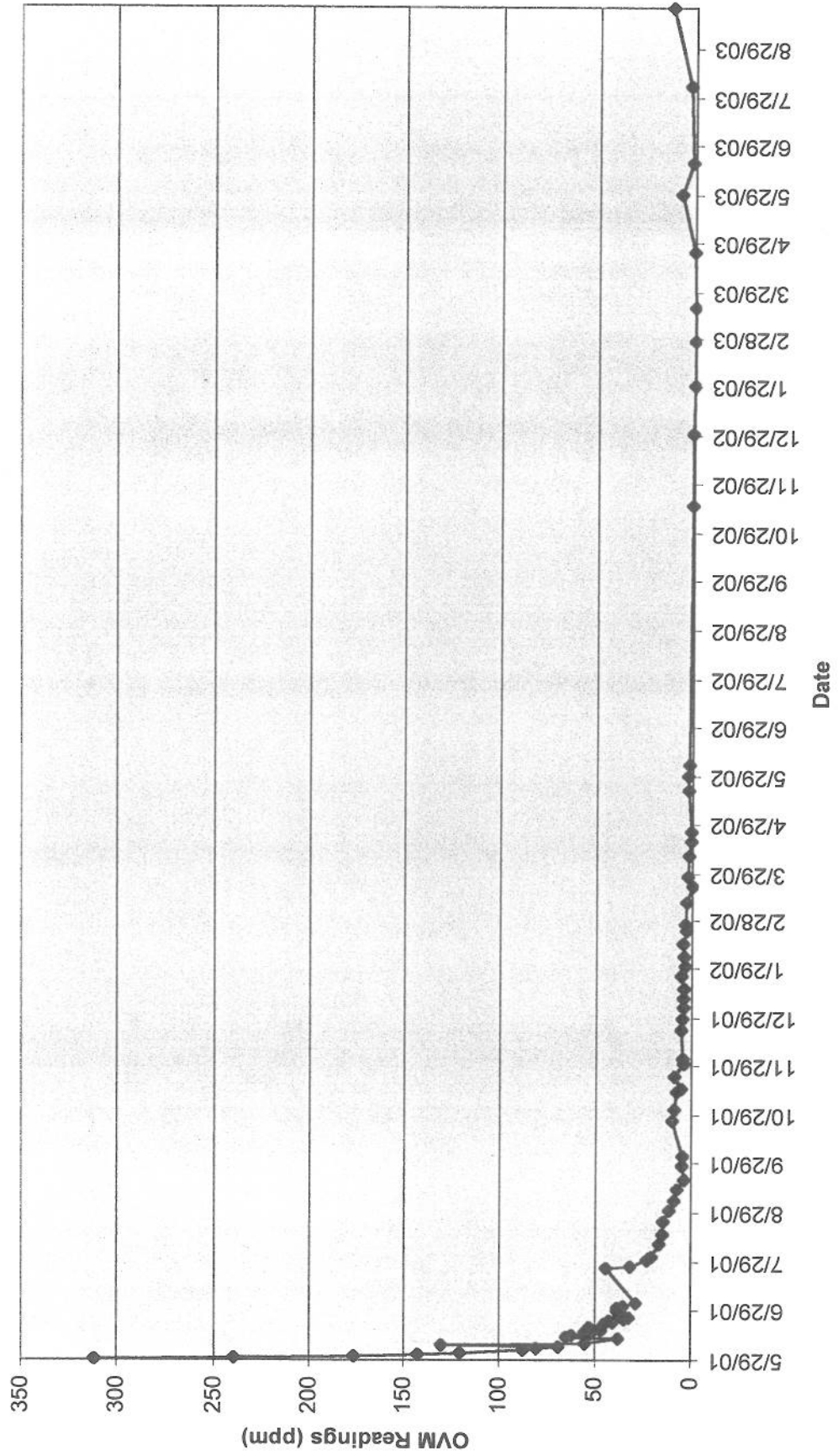
Between Carbon

Date	OVM (ppm)	Temp	Notes
9/23/03	0	75	

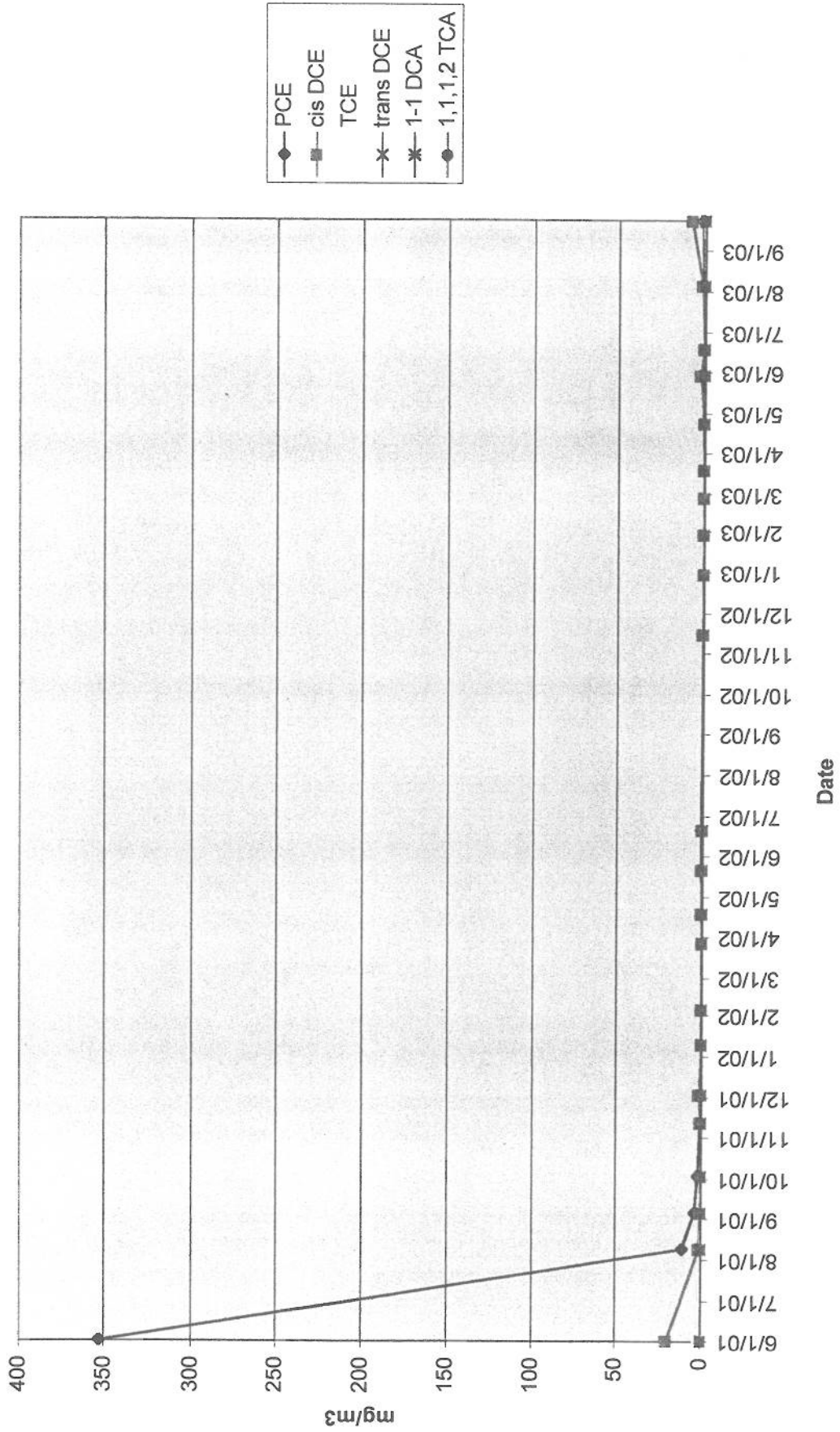
Post Carbon

Date	OVM (PPM)	Flow (CFM)	Temp	Notes
9/23/03	0	234	75	

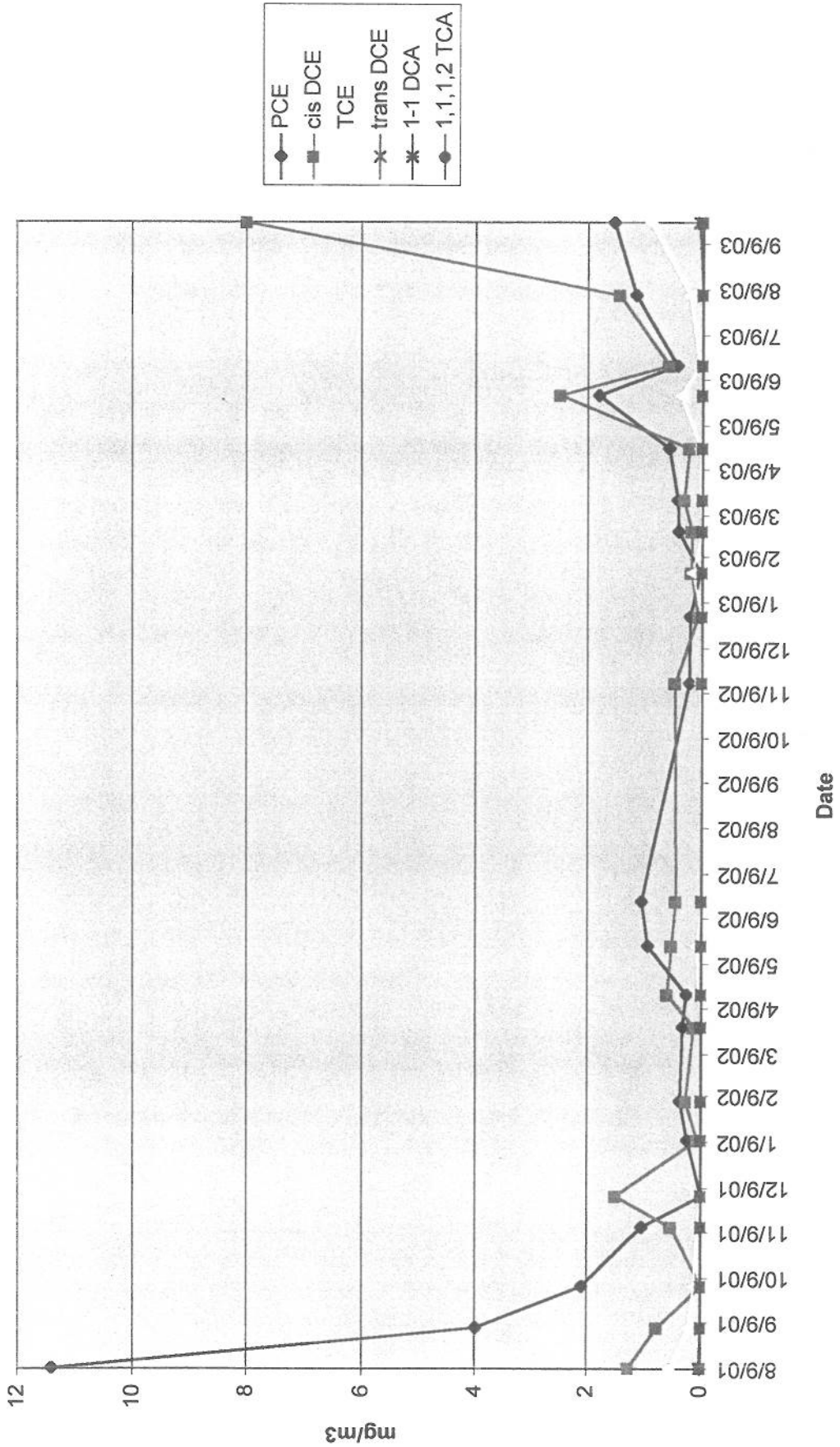
Pre-Carbon OVM Readings (ppm)



Air Bag Chart (mg/m³)
 June 2001 thru September 23, 2003



**Air Bag Pre-Carbon Chart (mg/m³)
August 9, 2001 thru September 23, 2003**



Appendix B
Laboratory Analytical Data Sheets

Environmental Testing Laboratories, Inc.

208 Route 109, Farmingdale NY 11735

Phone - 631-249-1456 Fax - 631-249-8344

10/02/2003

Custody Document: R1845

Received: 09/23/2003 14:55

Sampled by: Matt Schiefeistein

Client: Anson Environmental Inc771 New York Avenue
Huntington,
NY 11743**Project: Westbury**123 Post Avenue
Westbury,
NY**Manager: Dean Anson**

Respectfully submitted,

Patricia Werner-Els
Quality Assurance Officer

NYS Lab ID # 10969
NJ Cert. # 73812
CT Cert. # PH0645
MA Cert. # NY061
PA Cert. # 68-535
NH Cert. # 252592-BA
RI Cert. # 161

The information contained in this report is confidential and intended only for the use of the client listed above. This report shall not be reproduced, except in full, without the written consent of Environmental Testing Laboratories, Inc.



Environmental Testing Laboratories, Inc.

208 Route 109, Farmingdale NY 11735
 Phone - 631-249-1456 Fax - 631-249-8344

10/02/2003

Volatiles - EPA 8260B in AIR**Sample: R1845-1**

Client Sample ID: Pre Carbon 210 CFM

Matrix: Air

Type: Grab

Collected: 09/23/2003 14:20

Volume: 3.59 L

Remarks: See Case Narrative

Analyzed Date: 10/01/2003

Analytical Results

Cas No	Analyte	File ID	MDL	Concentration	Units	Q
75-71-8	Dichlorodifluoromethane	C1108-3332	0.026	0.026	mg/M3	U
74-87-3	Chloromethane	C1108-3332	0.017	0.017	mg/M3	U
75-01-4	Vinyl Chloride	C1108-3332	0.017	0.017	mg/M3	U
74-83-9	Bromomethane	C1108-3332	0.026	0.026	mg/M3	U
75-00-3	Chloroethane	C1108-3332	0.029	0.029	mg/M3	U
75-69-4	Trichlorofluoromethane	C1108-3332	0.0079	0.0079	mg/M3	U
75-35-4	1,1-Dichloroethene	C1108-3332	0.012	0.012	mg/M3	U
75-09-2	Methylene Chloride	C1108-3332	0.058	0.058	mg/M3	U
156-60-5	t-1,2-Dichloroethene	C1108-3332	0.017	0.066	mg/M3	
75-34-3	1,1-Dichloroethane	C1108-3332	0.018	0.018	mg/M3	U
590-20-7	2,2-Dichloropropane	C1108-3332	0.013	0.013	mg/M3	U
156-59-2	c-1,2-Dichloroethene	C1109-3354	0.070	8.00	mg/M3	
67-66-3	Chloroform	C1108-3332	0.011	0.011	mg/M3	U
74-97-5	Bromochloromethane	C1108-3332	0.023	0.023	mg/M3	U
71-55-6	1,1,1-Trichloroethane	C1108-3332	0.013	0.013	mg/M3	U
563-58-6	1,1-Dichloropropene	C1108-3332	0.046	0.046	mg/M3	U
56-23-5	Carbon Tetrachloride	C1108-3332	0.013	0.013	mg/M3	U
107-06-2	1,2 Dichloroethane	C1108-3332	0.020	0.020	mg/M3	U
71-43-2	Benzene	C1108-3332	0.0092	0.0092	mg/M3	U
79-01-6	Trichloroethene	C1108-3332	0.014	0.91	mg/M3	
78-87-5	1,2-Dichloropropane	C1108-3332	0.011	0.011	mg/M3	U
75-27-4	Bromodichloromethane	C1108-3332	0.0067	0.0067	mg/M3	U
74-95-3	Dibromomethane	C1108-3332	0.0096	0.0096	mg/M3	U
10061-01-5	c-1,3-Dichloropropene	C1108-3332	0.033	0.033	mg/M3	U
108-88-3	Toluene	C1108-3332	0.0088	0.0088	mg/M3	U
10061-02-6	t-1,3-Dichloropropene	C1108-3332	0.033	0.033	mg/M3	U
79-00-5	1,1,2-Trichloroethane	C1108-3332	0.0071	0.0071	mg/M3	U
142-28-9	1,3-Dichloropropane	C1108-3332	0.013	0.013	mg/M3	U
127-18-4	Tetrachloroethene	C1108-3332	0.0071	1.54	mg/M3	
124-48-1	Dibromochloromethane	C1108-3332	0.0075	0.0075	mg/M3	U
106-93-4	1,2-Dibromoethane	C1108-3332	0.0071	0.0071	mg/M3	U
108-90-7	Chlorobenzene	C1108-3332	0.0067	0.0067	mg/M3	U



Environmental Testing Laboratories, Inc.

208 Route 109, Farmingdale NY 11735

Phone - 631-249-1456 Fax - 631-249-8344

10/02/2003

Volatiles - EPA 8260B in AIR**Sample: R1845-1**

Client Sample ID: Pre Carbon 210 CFM

Collected: 09/23/2003 14:20

Matrix: Air

Type: Grab

Volume: 3.59 L

Remarks: See Case Narrative

Analyzed Date: 10/01/2003

Analytical Results

Cas No	Analyte	File ID	MDL	Concentration	Units	Q
630-20-6	1,1,1,2-Tetrachloroethane	C1108-3332	0.0079	0.0079	mg/M3	U
100-41-4	Ethylbenzene	C1108-3332	0.0071	0.0071	mg/M3	U
108-38-3	m,p-xylene	C1108-3332	0.011	0.011	mg/M3	U
95-47-6	o-xylene	C1108-3332	0.0088	0.0088	mg/M3	U
100-42-5	Styrene	C1108-3332	0.0050	0.0050	mg/M3	U
98-82-8	Isopropylbenzene	C1108-3332	0.0042	0.0042	mg/M3	U
75-25-2	Bromoform	C1108-3332	0.0092	0.0092	mg/M3	U
79-34-5	1,1,2,2-Tetrachloroethane	C1108-3332	0.013	0.013	mg/M3	U
96-18-4	1,2,3-Trichloropropane	C1108-3332	0.030	0.030	mg/M3	U
103-65-1	n-Propylbenzene	C1108-3332	0.0092	0.0092	mg/M3	U
108-86-1	Bromobenzene	C1108-3332	0.013	0.013	mg/M3	U
108-67-8	1,3,5-Trimethylbenzene	C1108-3332	0.0071	0.0071	mg/M3	U
95-49-8	2-Chlorotoluene	C1108-3332	0.0084	0.0084	mg/M3	U
106-43-4	4-Chlorotoluene	C1108-3332	0.013	0.013	mg/M3	U
99-87-6	4-Isopropyltoluene	C1108-3332	0.0063	0.0063	mg/M3	U
95-63-6	1,2,4-trimethylbenzene	C1108-3332	0.0067	0.0067	mg/M3	U
135-98-8	sec-Butylbenzene	C1108-3332	0.0084	0.0084	mg/M3	U
98-06-6	tert-Butylbenzene	C1108-3332	0.0063	0.0063	mg/M3	U
541-73-1	1,3-Dichlorobenzene	C1108-3332	0.0079	0.0079	mg/M3	U
106-46-7	1,4-Dichlorobenzene	C1108-3332	0.010	0.010	mg/M3	U
104-51-8	n-Butylbenzene	C1108-3332	0.0092	0.0092	mg/M3	U
95-50-1	1,2-Dichlorobenzene	C1108-3332	0.0046	0.0046	mg/M3	U
96-12-8	1,2-Dibromo-3-chloropropane	C1108-3332	0.010	0.010	mg/M3	U
120-82-1	1,2,4-Trichlorobenzene	C1108-3332	0.010	0.010	mg/M3	U
87-68-3	Hexachlorobutadiene	C1108-3332	0.0050	0.0050	mg/M3	U
91-20-3	Naphthalene	C1108-3332	0.0088	0.0088	mg/M3	U
87-61-6	1,2,3-Trichlorobenzene	C1108-3332	0.035	0.035	mg/M3	U
1634-04-4	MTBE	C1108-3332	0.026	0.026	mg/M3	U



Environmental Testing Laboratories, Inc.

208 Route 109, Farmingdale NY 11735

Phone - 631-249-1456 Fax - 631-249-8344

10/02/2003

Volatiles - EPA 8260B in AIR**Sample: R1845-1**

Client Sample ID: Pre Carbon 210 CFM

Matrix: Air

Remarks: See Case Narrative

Analyzed Date: 10/01/2003

Type: Grab

Collected: 09/23/2003 14:20

Volume: 3.59 L

Surrogate Results

Cas No	Analyte	File ID	% Recovery	QC Limits	Q
460-00-4	4-BROMOFLUOROBENZENE	C1108-3332	104.0 %	(77 - 128)	
4774-33-8	DIBROMOFLUOROMETHANE	C1108-3332	100.0 %	(69 - 157)	
2037-26-5	TOLUENE-D8	C1108-3332	98.2 %	(70 - 124)	
460-00-4	4-BROMOFLUOROBENZENE	C1109-3354	102.0 %	(77 - 128)	
4774-33-8	DIBROMOFLUOROMETHANE	C1109-3354	99.9 %	(69 - 157)	
2037-26-5	TOLUENE-D8	C1109-3354	100.0 %	(70 - 124)	



Environmental Testing Laboratories, Inc.

208 Route 109, Farmingdale NY 11735

Phone - 631-249-1456 Fax - 631-249-8344

10/02/2003

Volatiles - EPA 8260B in AIR**Sample: R1845-2**

Client Sample ID: Post Carbon 234 CFM

Matrix: Air

Type: Grab

Collected: 09/23/2003 14:20

Volume: 4.13 L

Remarks: See Case Narrative

Analyzed Date: 10/01/2003

Analytical Results

Cas No	Analyte	File ID	MDL	Concentration	Units	Q
75-71-8	Dichlorodifluoromethane	C1107-3317	0.023	0.023	mg/M3	U
74-87-3	Chloromethane	C1107-3317	0.015	0.015	mg/M3	U
75-01-4	Vinyl Chloride	C1107-3317	0.015	0.015	mg/M3	U
74-83-9	Bromomethane	C1107-3317	0.023	0.023	mg/M3	U
75-00-3	Chloroethane	C1107-3317	0.025	0.025	mg/M3	U
75-69-4	Trichlorofluoromethane	C1107-3317	0.0069	0.0069	mg/M3	U
75-35-4	1,1-Dichloroethene	C1107-3317	0.010	0.010	mg/M3	U
75-09-2	Methylene Chloride	C1107-3317	0.050	0.050	mg/M3	U
156-60-5	t-1,2-Dichloroethene	C1107-3317	0.015	0.015	mg/M3	U
75-34-3	1,1-Dichloroethane	C1107-3317	0.016	0.016	mg/M3	U
590-20-7	2,2-Dichloropropane	C1107-3317	0.011	0.011	mg/M3	U
156-59-2	c-1,2-Dichloroethene	C1107-3317	0.015	0.076	mg/M3	
67-66-3	Chloroform	C1107-3317	0.0094	0.0094	mg/M3	U
74-97-5	Bromochloromethane	C1107-3317	0.020	0.020	mg/M3	U
71-55-6	1,1,1-Trichloroethane	C1107-3317	0.011	0.011	mg/M3	U
563-58-6	1,1-Dichloropropene	C1107-3317	0.040	0.040	mg/M3	U
56-23-5	Carbon Tetrachloride	C1107-3317	0.011	0.011	mg/M3	U
107-06-2	1,2 Dichloroethane	C1107-3317	0.017	0.017	mg/M3	U
71-43-2	Benzene	C1107-3317	0.0080	0.0080	mg/M3	U
79-01-6	Trichloroethene	C1107-3317	0.012	0.012	mg/M3	U
78-87-5	1,2-Dichloropropane	C1107-3317	0.0098	0.0098	mg/M3	U
75-27-4	Bromodichloromethane	C1107-3317	0.0058	0.0058	mg/M3	U
74-95-3	Dibromomethane	C1107-3317	0.0083	0.0083	mg/M3	U
10061-01-5	c-1,3-Dichloropropene	C1107-3317	0.029	0.029	mg/M3	U
108-88-3	Toluene	C1107-3317	0.0076	0.0076	mg/M3	U
10061-02-6	t-1,3-Dichloropropene	C1107-3317	0.029	0.029	mg/M3	U
79-00-5	1,1,2-Trichloroethane	C1107-3317	0.0062	0.0062	mg/M3	U
142-28-9	1,3-Dichloropropane	C1107-3317	0.011	0.011	mg/M3	U
127-18-4	Tetrachloroethene	C1107-3317	0.0062	0.057	mg/M3	
124-48-1	Dibromochloromethane	C1107-3317	0.0065	0.0065	mg/M3	U
106-93-4	1,2-Dibromoethane	C1107-3317	0.0062	0.0062	mg/M3	U
108-90-7	Chlorobenzene	C1107-3317	0.0058	0.0058	mg/M3	U



Environmental Testing Laboratories, Inc.

208 Route 109, Farmingdale NY 11735

Phone - 631-249-1456 Fax - 631-249-8344

10/02/2003

Volatiles - EPA 8260B in AIR**Sample: R1845-2**

Client Sample ID: Post Carbon 234 CFM

Matrix: Air

Type: Grab

Collected: 09/23/2003 14:20

Volume: 4.13 L

Remarks: See Case Narrative

Analyzed Date: 10/01/2003

Analytical Results

Cas No	Analyte	File ID	MDL	Concentration	Units	Q
630-20-6	1,1,1,2-Tetrachloroethane	C1107-3317	0.0069	0.0069	mg/M3	U
100-41-4	Ethylbenzene	C1107-3317	0.0062	0.0062	mg/M3	U
108-38-3	m,p-xylene	C1107-3317	0.0094	0.0094	mg/M3	U
95-47-6	o-xylene	C1107-3317	0.0076	0.0076	mg/M3	U
100-42-5	Styrene	C1107-3317	0.0044	0.0044	mg/M3	U
98-82-8	Isopropylbenzene	C1107-3317	0.0036	0.0036	mg/M3	U
75-25-2	Bromoform	C1107-3317	0.0080	0.0080	mg/M3	U
79-34-5	1,1,1,2-Tetrachloroethane	C1107-3317	0.012	0.012	mg/M3	U
96-18-4	1,2,3-Trichloropropane	C1107-3317	0.026	0.026	mg/M3	U
103-65-1	n-Propylbenzene	C1107-3317	0.0080	0.0080	mg/M3	U
108-86-1	Bromobenzene	C1107-3317	0.011	0.011	mg/M3	U
108-67-8	1,3,5-Trimethylbenzene	C1107-3317	0.0062	0.0062	mg/M3	U
95-49-8	2-Chlorotoluene	C1107-3317	0.0073	0.0073	mg/M3	U
106-43-4	4-Chlorotoluene	C1107-3317	0.012	0.012	mg/M3	U
99-87-6	4-Isopropyltoluene	C1107-3317	0.0054	0.0054	mg/M3	U
95-63-6	1,2,4-trimethylbenzene	C1107-3317	0.0058	0.0058	mg/M3	U
135-98-8	sec-Butylbenzene	C1107-3317	0.0073	0.0073	mg/M3	U
98-06-6	tert-Butylbenzene	C1107-3317	0.0054	0.0054	mg/M3	U
541-73-1	1,3-Dichlorobenzene	C1107-3317	0.0069	0.0069	mg/M3	U
106-46-7	1,4-Dichlorobenzene	C1107-3317	0.0087	0.0087	mg/M3	U
104-51-8	n-Butylbenzene	C1107-3317	0.0080	0.0080	mg/M3	U
95-50-1	1,2-Dichlorobenzene	C1107-3317	0.0040	0.0040	mg/M3	U
96-12-8	1,2-Dibromo-3-chloropropane	C1107-3317	0.0087	0.0087	mg/M3	U
120-82-1	1,2,4-Trichlorobenzene	C1107-3317	0.0087	0.0087	mg/M3	U
87-68-3	Hexachlorobutadiene	C1107-3317	0.0044	0.0044	mg/M3	U
91-20-3	Naphthalene	C1107-3317	0.0076	0.0076	mg/M3	U
87-61-6	1,2,3-Trichlorobenzene	C1107-3317	0.030	0.030	mg/M3	U
1634-04-4	MTBE	C1107-3317	0.023	0.023	mg/M3	U



Environmental Testing Laboratories, Inc.

208 Route 109, Farmingdale NY 11735

Phone - 631-249-1456 Fax - 631-249-8344

10/02/2003

Volatiles - EPA 8260B in AIR**Sample: R1845-2**

Client Sample ID: Post Carbon 234 CFM

Matrix: Air

Remarks: See Case Narrative

Analyzed Date: 10/01/2003

Type: Grab

Collected: 09/23/2003 14:20

Volume: 4.13 L

Surrogate Results

Cas No	Analyte	File ID	% Recovery	QC Limits	Q
460-00-4	4-BROMOFLUOROBENZENE	C1107-3317	105.0 %	(77 - 128)	
4774-33-8	DIBROMOFLUOROMETHANE	C1107-3317	99.3 %	(69 - 157)	
2037-26-5	TOLUENE-D8	C1107-3317	98.0 %	(70 - 124)	



Environmental Testing Laboratories, Inc.

208 Route 109, Farmingdale NY 11735

Phone - 631-249-1456 Fax - 631-249-8344

10/02/2003

Case Narrative

8260:

The following compounds were calibrated at 25, 50, 100, 150 and 200 ppb levels in the initial calibration curve:

- Acetone
- 2-Butanone
- 4-Methyl-2-pentanone
- 2-Hexanone

M&P-Xylenes and 2-Chloroethylvinylether were calibrated at 10, 40, 100, 200 and 300 ppb levels.

All other compounds were calibrated at 5, 20, 50, 100 and 150 ppb levels.



Environmental Testing Laboratories, Inc.

208 Route 109, Farmingdale NY 11735
Phone - 631-249-1456 Fax - 631-249-8344

10/02/2003

ORGANIC METHOD QUALIFIERS

Q - Qualifier - specified entries and their meanings are as follows:

- U - The analytical result is a non-detect.
- J - Indicates an estimated value. The concentration reported was detected below the Method Detection Limit.
- B - The analyte was found in the associated method blank as well as the sample. It indicates possible/probable blank contamination and warns the data user to take appropriate action.
- E - The concentration of the analyte exceeded the calibration range of the instrument.
- D - This flag indicates a system monitoring compound diluted out.

INORGANIC METHOD QUALIFIERS

C - (Concentration) qualifiers are as follows:

- B - Entered if the reported value was obtained from a reading that was less than the Contract Required Detection Limit (CRDL) but greater than or equal to the Instrument Detection Limit (IDL).
- U - Entered when the analyte was analyzed for, but not detected.

Q - Qualifier specific entries and their meanings are as follows:

- E - Reported value is estimated because of the presence of interferences.

M - (Method) qualifiers are as follows:

- A - Flame AA
- AS - Semi-automated Spectrophotometric
- AV - Automated Cold Vapor AA
- C - Manual Spectrophotometric
- F - Furnace AA
- P - ICP
- T - Titrimetric

OTHER QUALIFIERS

- ND - Not Detected
- NA - Not Applicable
- NR - Not Required
- * - Outside Expected Range (NYCDEP Table I/II or Surrogate Limits)
- x - Outside Expected Range

OTHER

- All soil and sediment samples are reported on a dry weight basis.



Appendix C
Indoor Air Sampling Data

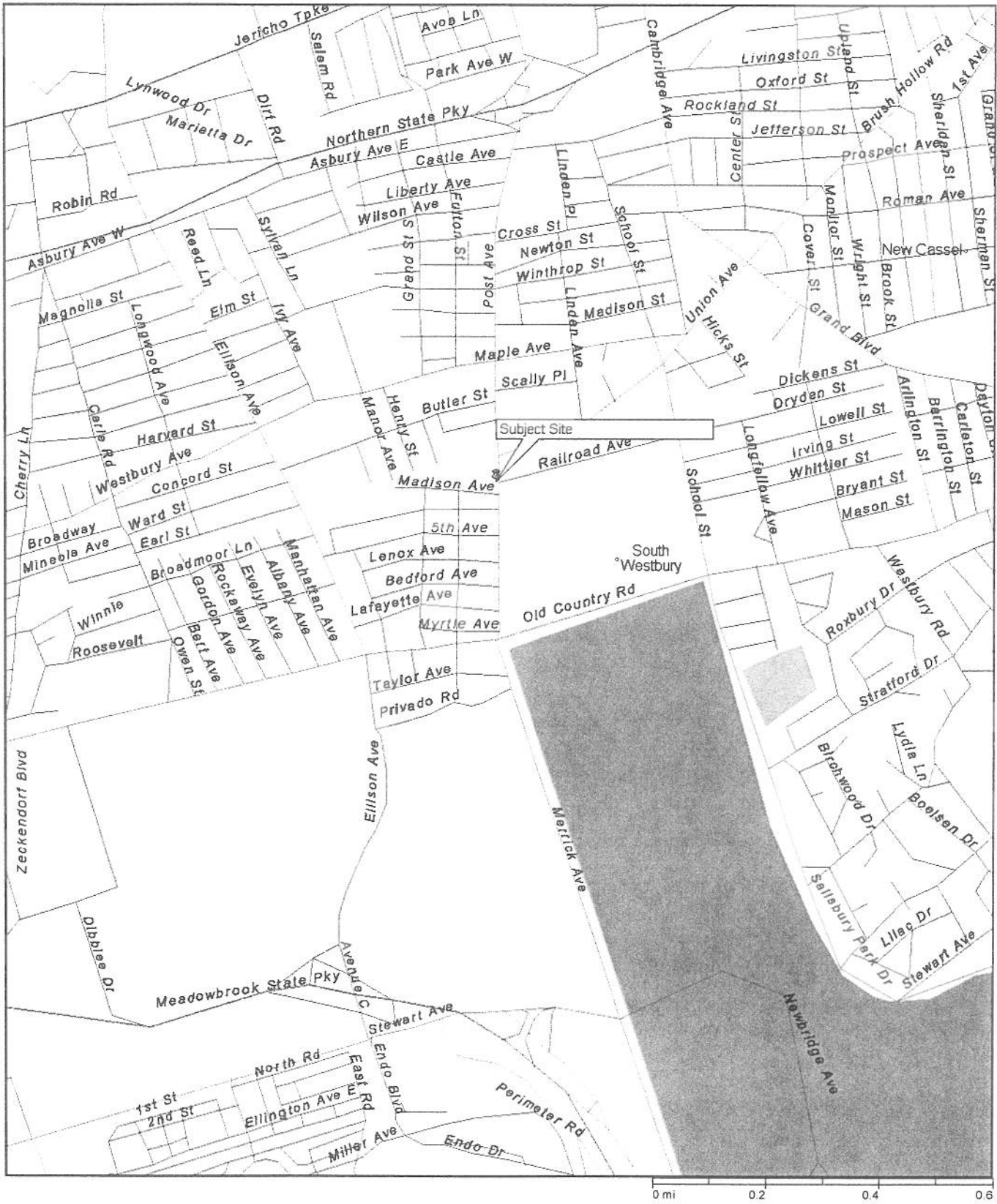
123 Post Avenue (Site ID #130088)
Indoor Air Sampling for Tetrachloroethene

Sampling location	Result (mcg/m ³)															
	02/20-21/2001	3/27-28/2001	4/18-19/2001	6/16-17/2001	6/27-28/2001	9/10-11/2001	11/29-30/2001	3/19-20/2002	6/12-14/2002	9/17-18/2002	12/17-18/2002	01/07-08/2003	03/19-20/2003	6/17-18/2003	7/28-29/2003	
	DOH/NCDH	DOH/NCDH	DOH/NCDH	DOH/NCDH	DOH/NCDH	DOH/NCDH	DOH/NCDH	DOH/NCDH	D&B/DEC	D&B/DEC	D&B/DEC	DOH/NCDH	D&B/DEC	AEI/DEC	AEI/DEC	
Westbury Chiropractic Center																
1st Floor Waiting Room	1,520 and 1,580	NS	NS	NS	44	NS	NS	5 and 5	14 and 14*	22 and 23*	6.6 and 6.2*	NS	NS	12	NS	
1st Floor Rear Office	1,770	NS	NS	192	50	NS	NS	5	NS	NS	NS	NS	NS	NS	NS	
Super Super Convenience Store	400	NS	NS	NS	14	NS	7	5 [PL]	7	13	<0.7	NS	1.9	NS	NS	
1st Floor Counter Area	1,900 and 1,930	NS	NS	45.3	NS	NS	NS	NS	NS	NS	NS	NS	NS	NS	NS	
Rear of Store				831 and 1,020	86 and 96	NS	15 and 16	5 and 8 [SU]	20	41	6.9	NS	2.9	19	31	
John's Custom Tailor				203	NS	NS	NS	NS	NS	NS	NS	NS	NS	NS	NS	
Common Basement				NS	51	NS	10	NS	20	23	32	NS	NS	NS	NS	
1st Floor Near Counter				NS	NS	NS	NS	7	NS	NS	NS	NS	NS	NS	NS	
1st Floor Work Room				NS	NS	NS	NS	NS	NS	NS	NS	NS	NS	NS	NS	
Westbury Terrace Condominiums				NS	NS	NS	NS	NS	NS	NS	NS	NS	NS	NS	NS	
1st Floor - Manager's Office				NS	NS	NS	NS	NS	NS	NS	NS	NS	NS	NS	NS	
1st Floor Workshop				NS	NS	NS	NS	NS	NS	NS	NS	NS	NS	NS	NS	
1st Floor - Hall Outside Supt's Apt.				NS	NS	NS	NS	NS	NS	NS	NS	NS	NS	NS	NS	
Boiler Room, South Wing				NS	NS	NS	NS	NS	NS	NS	NS	NS	NS	NS	NS	
1st Floor Lobby				NS	NS	NS	NS	NS	NS	NS	NS	NS	NS	NS	NS	
6th Floor Stairwell Landing				NS	NS	NS	NS	NS	NS	NS	NS	NS	NS	NS	NS	
Hallway outside Apt. 3R				NS	NS	NS	NS	NS	NS	NS	NS	NS	NS	NS	NS	
Apt. 2R - Living Room				NS	NS	NS	NS	NS	NS	NS	NS	NS	NS	NS	NS	
1st Floor Meter Room				NS	NS	NS	NS	NS	NS	NS	NS	NS	NS	NS	NS	
Gomez Residence				6.3 and 5.4	NS	NS	NS	NS	NS	NS	NS	NS	NS	NS	NS	
1st Floor - Supt's Living Room				NS	NS	NS	NS	NS	NS	NS	NS	NS	NS	NS	NS	
1st Floor - Daughter's Bedroom				NS	NS	NS	NS	NS	NS	NS	NS	NS	NS	NS	NS	
1st Floor - Supt's Master Bedroom				NS	NS	NS	NS	NS	NS	NS	NS	NS	NS	NS	NS	
1st Floor - 3rd (Far) Bedroom				NS	NS	NS	NS	NS	NS	NS	NS	NS	NS	NS	NS	
Selassei Residence				NS	NS	NS	NS	NS	NS	NS	NS	NS	NS	NS	NS	
2nd Floor Kitchen				NS	NS	NS	NS	NS	NS	NS	NS	NS	NS	NS	NS	
2nd Floor Living Room				NS	NS	NS	NS	NS	NS	NS	NS	NS	NS	NS	NS	
Hernandez Residence				NS	NS	NS	NS	NS	NS	NS	NS	NS	NS	NS	NS	
2nd Floor Bedroom				NS	NS	NS	NS	NS	NS	NS	NS	NS	NS	NS	NS	
Outdoor sample				NS	NS	NS	NS	NS	NS	NS	NS	NS	NS	NS	NS	
Trip Blank				NS	NS	NS	NS	NS	NS	NS	NS	NS	NS	NS	NS	

Notes: The symbol "<" means "less than." A concentration preceded by this symbol means that the compound was not detected in the sample. The [PL] notation indicates that the compound was present in the sample, but at a concentration less than the detection limit. The [SU] notation indicates that the reported concentration is suspect.
* Duplicate sample.

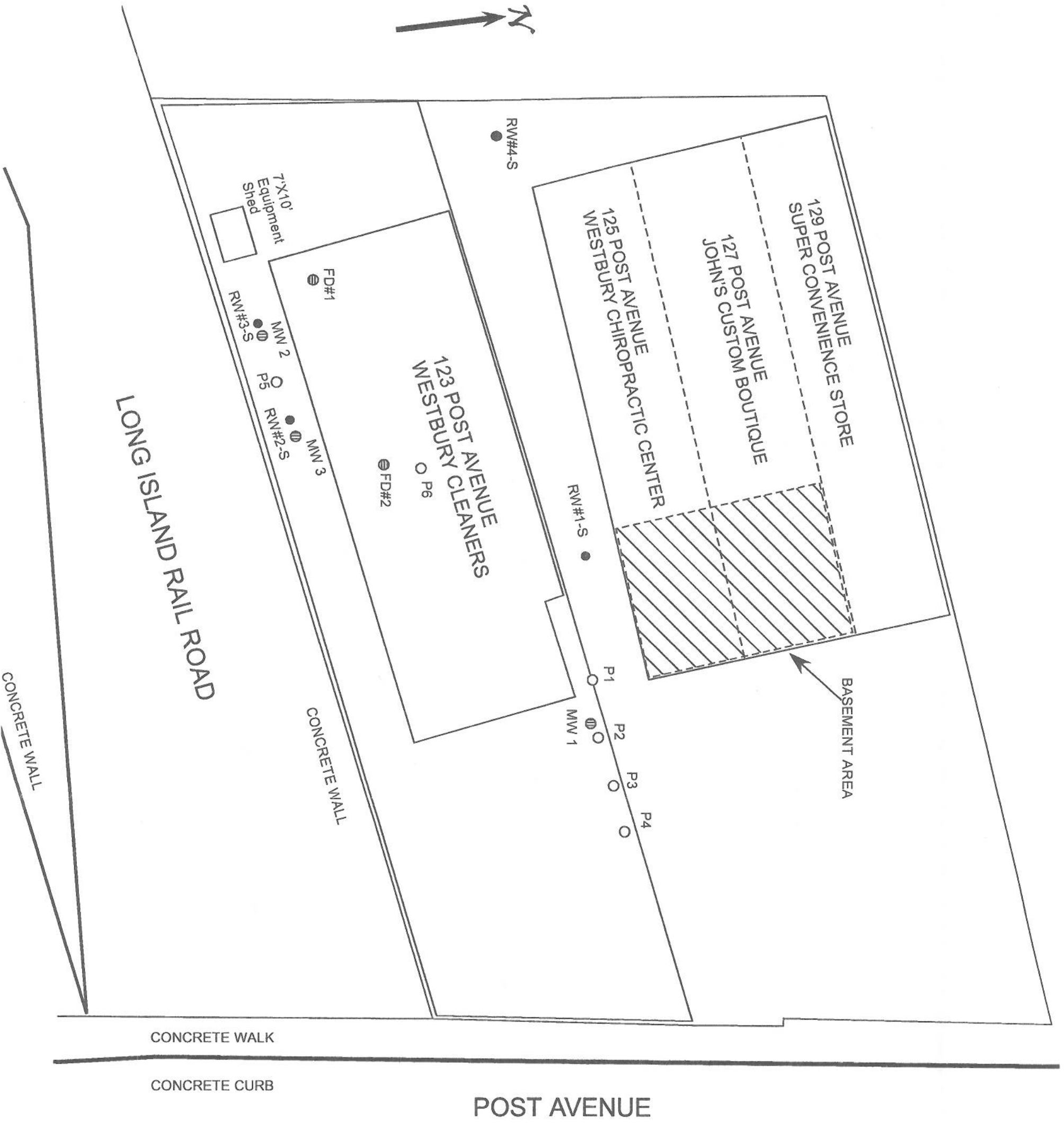
Appendix D

Maps and Distances



MICROSOFT AUTOMAP
Streets Plus

Westbury Valet Dry Cleaners
 123 Post Avenue, Westbury NY 11590



Current Site Map

Westbury Valet Cleaners
 123 Post Ave
 Westbury, NY 11590
 Site Location Map

Created by:
 Anson Environmental Ltd.
 771 New York Ave
 Huntington, NY 11743
 631-351-3555

Legend

- Remediation Well
- ⊖ Floor Drain
- ⊕ Monitoring Well
- ▨ Basement Area
- Vapor Monitoring Probe

Scale: 1 inch = 20 feet

NOTE:
 Remediation Wells Screened from
 10-20 feet Below Grade
 Vapor Monitoring Probes Screened
 10-15 Feet Below Grade

Distances Based on Maps

New Well Locations

RW1-P1	24 ft
RW1-P2	36 ft
RW1-P3	45 ft
RW1-P4	55 ft
RW1-P5	70 ft
RW1-P6	37 ft
RW1-RW2	64 ft
RW1-RW3	79 ft
RW1-RW4	85 ft
RW1-MW1	33 ft
RW1-MW2	77 ft
RW1-MW3	62 ft

RW2-P1	78.5 ft
RW2-P2	87 ft
RW2-P3	96 ft
RW2-P4	104.5 ft
RW2-P5	8 ft
RW2-P6	27.5 ft
RW2-RW1	64 ft
RW2-RW3	20 ft
RW2-RW4	69.5 ft
RW2-MW1	84 ft
RW2-MW2	17.5 ft
RW2-MW3	3.5 ft

RW3-P1	96 ft
RW3-P2	105.5 ft
RW3-P3	114.5 ft
RW3-P4	123.5 ft
RW3-P5	12 ft
RW3-P6	43 ft
RW3-RW1	79 ft
RW3-RW2	20 ft
RW3-RW4	60 ft
RW3-MW1	102.5 ft
RW3-MW2	2.5 ft
RW3-MW3	23.5 ft

RW4-P1	108.5 ft
RW4-P2	120.5 ft
RW4-P3	129.5 ft
RW4-P4	139.5 ft
RW4-P5	65 ft
RW4-P6	67.5 ft
RW4-RW1	85 ft
RW4-RW2	69.5 ft
RW4-RW3	60 ft
RW4-MW1	117 ft
RW4-MW2	66 ft
RW4-MW3	71.5 ft
RW4-129 Post Ave NW Corner	65 ft

Appendix E
Field Logs and Data Sheets

8/5/03 MCH + Den on-site @ 1120
Mostly Cloudy 83°F Very Humid.
Conducting System check after one month
of pulsing. Collecting Air Bags at pre & post
Carbon. Conducting Semi annual groundwater
Sampling.

MW#1
DTW 33.83
DTB 40.60'

Purgina well for 15 min start time 1150
end time 1205
collected 2 40ml vials for analysis via
S&G @ 1205

MW#3
DTW ~~36.41~~ 36.41
DTB 44.5'

Purgina well for 15 min start time 1210
end time 1225.

Collected 2 40 ml vials for analysis via
S&G @ 1225

MW#2

DTW 36.66
DTB 43.01'

Purgina well for 15 min started @ 1230
end 1245

8/14/03
At approximately 1600 there was a
power failure which shut down the system.

8/15/03 MCH + Den on-site @ 1125 to
restart SVES.
Off-site @ 1135.

9/23/03 MCH + Den on-site @ 1402 to
conduct over procedure for pulsing the system.
Turned off ~~sample~~ system @ 1430 end off-site
to lab.

123 Post Ave
Westbury, NY

O&M CHECKLIST FOR SVE/AIR SPARGE SYSTEM

Date 9/23/03

Inspected By: Matt & Pete

Control Panel	Arrival	Departure
System	<input checked="" type="radio"/> On / Off	On / <input checked="" type="radio"/> Off
SVE Relief Valve	Open / <input checked="" type="radio"/> Closed	<input type="radio"/> cfm

SVE SYSTEM INSIDE TRAILER	
Was Moisture Separator Emptied?	Yes / <input checked="" type="radio"/> No
Moisture Disposal Drum	F / 75 / 50 / 25 / <input checked="" type="radio"/> E

SVE WELL READINGS (INSIDE TRAILER)				
SVE WELL #	Flow	PID Readings	Vacuum	Ball Valve
RW1-S	41 cfm	0.0 ppm	8 inches of Water	<input checked="" type="radio"/> 75 / 50 / 25 / C
RW2-S	65 cfm	2.5 ppm	8 inches of Water	<input checked="" type="radio"/> 75 / 50 / 25 / C
RW3-S	>65 cfm	34.5 ppm	14 inches of Water	<input checked="" type="radio"/> 75 / 50 / 25 / C
RW4-S	52 cfm	4.1 ppm	12 inches of Water	<input checked="" type="radio"/> 75 / 50 / 25 / C
	cfm	ppm	inches of Water	O / 75 / 50 / 25 / C
	cfm	ppm	inches of Water	O / 75 / 50 / 25 / C
	cfm	ppm	inches of Water	O / 75 / 50 / 25 / C
	cfm	ppm	inches of Water	O / 75 / 50 / 25 / C

SVE SYSTEM FLOW				
	Pre-Blower	Post Blower	Exhaust	Moisture Separ.
Vacuum	40 inch of water			38 inch of Water
Pressure		12 psi		
Flow	210 cfm	210 cfm	234 cfm	

CARBON SYSTEM				
	Pre-Carbon	Between Carbon	Post Carbon	Notes
PID	2.1 ppm	0.0 ppm	0.0 ppm	
Gastec	ppm	ppm	ppm	
Temp	73 degrees F	76 degrees F	73 degrees F	

SVE Radius of Influence				
Piezometer ID	Vacuum (inches of water)	Piezometer ID	Vacuum (inches of water)	Notes
P-1		P-6		
P-2				
P-3				
P-4				
P-5				