

**SUBSURFACE INVESTIGATION
OF SOIL CONDITIONS**

at

**FORMER MILL NECK MARINA
HERNAN AVENUE
LOCUST VALLEY, NEW YORK**

PREPARED FOR

**OTS ASSOCIATES, INC.
759 LONGACRE AVENUE
WOODMERE, NEW YORK**

PREPARED BY



BERNINGER ENVIRONMENTAL, INC.

NOVEMBER 2005

Berninger Environmental, Inc.

groundwater consultants and geologists

90-B Knickerbocker Avenue

Bohemia • New York • 11716

Phone: 631 • 589 • 6521

Fax: 631 • 589 • 6528

November 2, 2005

Mr. Harvey Weisman
OTS Associates, Inc.
759 Longacre Avenue
Woodmere, New York 11598

Re: Environmental Services
Portions of Former Mill Neck Bay Marina
Hernan Avenue
Locust Valley, New York

Dear Mr. Weisman:

This report summarizes the findings of environmental investigation activities conducted by Berninger Environmental Inc. (BEI) to further evaluate the presence of heavy metals in soils at the subject property relative to the historic use of the subject property as a marina and boat yard. The subject property had been historically part of the former Mill Neck Marina. The property is adjoined to the east by Mill Neck Creek and to the north, south and west by residential development. The subject property is defined in the Nassau County Tax Maps as Section 29 Block 39 Lot Nos. 313 through 321 and 327 through 331, as well as, Section 29 Block 40 Lot Nos. 334 through 338 and 348.

Locations
based on
what?
from the
Site Plan?

A prior environmental study (by others) at the former marina (including portions of the study property) had identified heavy metals in soils at concentrations exceeding applicable regulatory action levels.

SOIL INVESTIGATION ACTIVITIES

On August 25 and 26, 2005 BEI conducted soil investigation activities at the subject property. Soil sampling locations were selected based upon a review of a *Site Plan For Use by the Locust Valley Water Department* prepared by Lewis E. Moss crop P.L.S. dated November 10, 2000 (Figure 1). Furthermore, locations of former features at the subject property were confirmed based upon a review of New York State Tidal Wetlands Map No. 618-528. Soil Investigation activities are documented in the attached photographic log.

The subject property was heavily developed with vegetation during the investigation activities. Therefore, in order to locate proposed soil boring locations, some vegetation was required to be cleared utilizing machetes and other manually operated equipment.

A series of twelve soil borings (B-1 through B-12) were installed across the subject property

utilizing decontaminated manually operated, stainless steel sampling probes. Soil samples were collected on a nominal-continuous basis until groundwater was encountered (ranging in depth between six inches and 3 feet below grade surface (bgs)). Groundwater was generally deeper at the southwestern portion of the property (approximately 2.5 to 3 feet bgs) and generally more shallow at the eastern and northern portions of the subject property. It should be noted that during sampling activities, the local tide level was low indicating that the water table underlying the subject property was similarly "low" and is expected to be shallower during higher tides.

Nominal
Continuous

Soil samples were screened for visual and olfactory evidence of impact. Fill material was encountered in all borings to depths ranging from six inches to greater than 2.5 feet bgs. Fill material observed within soil borings included, but were not limited to brick, concrete, glass, metal, etc. A higher concentration of fill material was observed at the northwestern portion of the property (B-5 and B-6) extending into groundwater and was consistently observed to the terminal depth of the borings (2.5 feet bgs).

Laboratory Analysis

Soil samples collected ranging in depths from 0 to 3 inches, 6 inches to 1 foot and from 1 to 1.5 feet bgs were submitted for laboratory analysis for NYSDEC Target Analyte List (TAL) Metals by the EPA 6010/7471 Series. The laboratory analysis was conducted by American Analytical Laboratories, a New York State Department of Health (NYSDOH) ELAP-certified laboratory under appropriate chain of custody protocols. Laboratory data sheets are included in Appendix A.

The results of the analysis of the soil samples were compared to NYSDEC Recommended Soil Clean-up Objectives (RSCOs) and the acceptable Eastern United States Background concentrations (EUS BC) set forth in the NYSDEC Division Technical and Administrative Guidance Memorandum (TAGM): *Determination of Soil Clean-up Objectives and Clean-up Levels* revised April 1995 and updated in August 2001.

As indicated in Table 1, numerous TAL metals were detected in all of the shallow soil samples. With the exception of shallow samples collected from borings B-2 and B-4 (at the southwestern and central western portions), each of the shallow samples collected from the subject property contained one or more of the following metals at concentrations exceeding their applicable NYSDEC RSCOs: arsenic (B-3, B-11 and B-12), calcium (B-7), copper (B-1, B-3 and B-5 through B-12), lead (B-1, B-5, B-11 and B-12), magnesium (B-7 through B-10), zinc (B-1, B-3 and B-5 through B-12) and mercury (B-1, B-3 and B-8 through B-12). Several metals were also detected at concentrations exceeding their NYSDEC RSCOs, but were within the acceptable range in EUS BC in each of the shallow soil samples.

high
levels
metals

Based upon the presence of the aforementioned metals in concentrations exceeding both their NYSDEC RSCOs and EUS BC, deeper samples collected from B-1, B-3, B-7 through B-12 were submitted for laboratory analysis for those metals detected in concentrations exceeding the applicable regulatory guidance values.

As depicted in Table 1, the analytical results of the deeper soil samples indicated that zinc was detected at a concentration exceeding its applicable NYSDEC RSCO at B-1, B-3, B-8, B-10, B-11

and B-12. However, as zinc is not a RCRA-regulated metal, BEI does not believe that the concentration of zinc in these soil samples represents a significant environmental concern.

The deeper samples collected from B-8 through B-10 and B-12 contained one or more of the following metals at concentrations exceeding NYSDEC RSCOs and EUS BC: arsenic (B-12), copper (B-8, B-10 and B-12), lead (B-12)¹, zinc (B-8, B-10 and B-12) and mercury (B-8, B-9, B-10 and B-12).

As indicated in Table 1, the B-12 deeper sample contained the higher concentrations of metals of the deeper samples analyzed. Therefore, this sample was selected for analysis for Toxicity Characteristic Leaching Procedure (TCLP) list metals by the EPA 6010B/7471B Series to ascertain the leaching potential of the metals and whether it was RCRA-characterized as hazardous. This sampling location corresponds to the former location of the marina building.

In an attempt to characterize the metals within the soils for proposed excavation and disposal, the results of the TCLP analysis were compared to the USEPA Toxicity Characteristic Concentrations. The only two metals detected in the analysis were barium (1.73 milligrams per liter (mg/L)) and lead (5.12 mg/L). The detected concentration of lead exceeds its USEPA Toxicity Characteristic Concentration of 5 mg/L.

SUMMARY AND CONCLUSIONS

Based upon field observations and laboratory analysis of shallow and deeper soil samples collected from across the subject property, BEI offers the following conclusions:

- Fill materials were encountered in soil borings installed throughout the entire subject property ranging in depths from 1.5 to a minimum of 2.5 feet bgs and into groundwater (identified ranging in depth from six inches and three feet bgs);
- With the exception of two locations at the southwestern and central western portions of the property (B-2 and B-4), select metals were detected in shallow soil samples at concentrations exceeding their applicable regulatory guidance values;
- Analysis of deeper soil samples indicated that metal related soil impacts (at concentrations exceeding applicable regulatory guidance values) extended to depths up to 2.5 feet bgs in borings B-5, B-9, B-9, B-10 and B-12, and were generally located at the easternmost and northwesterly portions of the property;
- A TCLP analysis of the deeper soil sample collected from B-12 indicated that lead was present at a concentration (5.12 mg/L) exceeding its USEPA toxicity characteristic concentration. Any soils containing lead at this concentration, excavated from the property would be required to be handled as "hazardous waste".

¹No surficial sample was analyzed from B-5, as a sample from 1 to 1.5 feet bgs was submitted for analysis.

Based upon the findings of the soil investigation, BEI attempted to estimate the areas of shallow and deep soil impacts, as well as the area potentially containing lead at "hazardous" concentrations. The delineation of shallow and deeper soils are provided in the attached Figure 2A Shallow and 2A Deep.

Should you have any questions or concerns, please do not hesitate to contact either of the undersigned.

Sincerely,
Berninger Environmental, Inc.



Walter Berninger
President/Consultant

William Schlageter
Hydrogeologist

Enc.

TABLES

Table 1

TAL Metals Detected in Soil Samples
Herman Avenue, Locus Valley, New York

TAL Metals (mg/kg)	Surface/Shallow Soil Samples												Deeper Soil Samples												NTSDEC TACM																																																																																																																																																																																																																																																																																																																																																																																												
	B-1 0 to 1 ft 0 to 3 in.	B-2 1 to 2 ft 3 to 6 in.	B-3 2 to 3 ft 6 to 9 in.	B-4 3 to 4 ft 9 to 12 in.	B-5 4 to 5 ft 12 to 15 in.	B-6 5 to 6 ft 15 to 18 in.	B-7 6 to 7 ft 18 to 21 in.	B-8 7 to 8 ft 21 to 24 in.	B-9 8 to 9 ft 24 to 27 in.	B-10 9 to 10 ft 27 to 30 in.	B-11 10 to 11 ft 30 to 33 in.	B-12 11 to 12 ft 33 to 36 in.	B-13 12 to 13 ft 36 to 39 in.	B-14 13 to 14 ft 39 to 42 in.	B-15 14 to 15 ft 42 to 45 in.	B-16 15 to 16 ft 45 to 48 in.	B-17 16 to 17 ft 48 to 51 in.	B-18 17 to 18 ft 51 to 54 in.	B-19 18 to 19 ft 54 to 57 in.	B-20 19 to 20 ft 57 to 60 in.	B-21 20 to 21 ft 60 to 63 in.	B-22 21 to 22 ft 63 to 66 in.	B-23 22 to 23 ft 66 to 69 in.	B-24 23 to 24 ft 69 to 72 in.		B-25 24 to 25 ft 72 to 75 in.	B-26 25 to 26 ft 75 to 78 in.	B-27 26 to 27 ft 78 to 81 in.	B-28 27 to 28 ft 81 to 84 in.	B-29 28 to 29 ft 84 to 87 in.	B-30 29 to 30 ft 87 to 90 in.	B-31 30 to 31 ft 90 to 93 in.	B-32 31 to 32 ft 93 to 96 in.	B-33 32 to 33 ft 96 to 99 in.	B-34 33 to 34 ft 99 to 102 in.	B-35 34 to 35 ft 102 to 105 in.	B-36 35 to 36 ft 105 to 108 in.	B-37 36 to 37 ft 108 to 111 in.	B-38 37 to 38 ft 111 to 114 in.	B-39 38 to 39 ft 114 to 117 in.	B-40 39 to 40 ft 117 to 120 in.	B-41 40 to 41 ft 120 to 123 in.	B-42 41 to 42 ft 123 to 126 in.	B-43 42 to 43 ft 126 to 129 in.	B-44 43 to 44 ft 129 to 132 in.	B-45 44 to 45 ft 132 to 135 in.	B-46 45 to 46 ft 135 to 138 in.	B-47 46 to 47 ft 138 to 141 in.	B-48 47 to 48 ft 141 to 144 in.	B-49 48 to 49 ft 144 to 147 in.	B-50 49 to 50 ft 147 to 150 in.	B-51 50 to 51 ft 150 to 153 in.	B-52 51 to 52 ft 153 to 156 in.	B-53 52 to 53 ft 156 to 159 in.	B-54 53 to 54 ft 159 to 162 in.	B-55 54 to 55 ft 162 to 165 in.	B-56 55 to 56 ft 165 to 168 in.	B-57 56 to 57 ft 168 to 171 in.	B-58 57 to 58 ft 171 to 174 in.	B-59 58 to 59 ft 174 to 177 in.	B-60 59 to 60 ft 177 to 180 in.	B-61 60 to 61 ft 180 to 183 in.	B-62 61 to 62 ft 183 to 186 in.	B-63 62 to 63 ft 186 to 189 in.	B-64 63 to 64 ft 189 to 192 in.	B-65 64 to 65 ft 192 to 195 in.	B-66 65 to 66 ft 195 to 198 in.	B-67 66 to 67 ft 198 to 201 in.	B-68 67 to 68 ft 201 to 204 in.	B-69 68 to 69 ft 204 to 207 in.	B-70 69 to 70 ft 207 to 210 in.	B-71 70 to 71 ft 210 to 213 in.	B-72 71 to 72 ft 213 to 216 in.	B-73 72 to 73 ft 216 to 219 in.	B-74 73 to 74 ft 219 to 222 in.	B-75 74 to 75 ft 222 to 225 in.	B-76 75 to 76 ft 225 to 228 in.	B-77 76 to 77 ft 228 to 231 in.	B-78 77 to 78 ft 231 to 234 in.	B-79 78 to 79 ft 234 to 237 in.	B-80 79 to 80 ft 237 to 240 in.	B-81 80 to 81 ft 240 to 243 in.	B-82 81 to 82 ft 243 to 246 in.	B-83 82 to 83 ft 246 to 249 in.	B-84 83 to 84 ft 249 to 252 in.	B-85 84 to 85 ft 252 to 255 in.	B-86 85 to 86 ft 255 to 258 in.	B-87 86 to 87 ft 258 to 261 in.	B-88 87 to 88 ft 261 to 264 in.	B-89 88 to 89 ft 264 to 267 in.	B-90 89 to 90 ft 267 to 270 in.	B-91 90 to 91 ft 270 to 273 in.	B-92 91 to 92 ft 273 to 276 in.	B-93 92 to 93 ft 276 to 279 in.	B-94 93 to 94 ft 279 to 282 in.	B-95 94 to 95 ft 282 to 285 in.	B-96 95 to 96 ft 285 to 288 in.	B-97 96 to 97 ft 288 to 291 in.	B-98 97 to 98 ft 291 to 294 in.	B-99 98 to 99 ft 294 to 297 in.	B-100 99 to 100 ft 297 to 300 in.	B-101 100 to 101 ft 300 to 303 in.	B-102 101 to 102 ft 303 to 306 in.	B-103 102 to 103 ft 306 to 309 in.	B-104 103 to 104 ft 309 to 312 in.	B-105 104 to 105 ft 312 to 315 in.	B-106 105 to 106 ft 315 to 318 in.	B-107 106 to 107 ft 318 to 321 in.	B-108 107 to 108 ft 321 to 324 in.	B-109 108 to 109 ft 324 to 327 in.	B-110 109 to 110 ft 327 to 330 in.	B-111 110 to 111 ft 330 to 333 in.	B-112 111 to 112 ft 333 to 336 in.	B-113 112 to 113 ft 336 to 339 in.	B-114 113 to 114 ft 339 to 342 in.	B-115 114 to 115 ft 342 to 345 in.	B-116 115 to 116 ft 345 to 348 in.	B-117 116 to 117 ft 348 to 351 in.	B-118 117 to 118 ft 351 to 354 in.	B-119 118 to 119 ft 354 to 357 in.	B-120 119 to 120 ft 357 to 360 in.	B-121 120 to 121 ft 360 to 363 in.	B-122 121 to 122 ft 363 to 366 in.	B-123 122 to 123 ft 366 to 369 in.	B-124 123 to 124 ft 369 to 372 in.	B-125 124 to 125 ft 372 to 375 in.	B-126 125 to 126 ft 375 to 378 in.	B-127 126 to 127 ft 378 to 381 in.	B-128 127 to 128 ft 381 to 384 in.	B-129 128 to 129 ft 384 to 387 in.	B-130 129 to 130 ft 387 to 390 in.	B-131 130 to 131 ft 390 to 393 in.	B-132 131 to 132 ft 393 to 396 in.	B-133 132 to 133 ft 396 to 399 in.	B-134 133 to 134 ft 399 to 402 in.	B-135 134 to 135 ft 402 to 405 in.	B-136 135 to 136 ft 405 to 408 in.	B-137 136 to 137 ft 408 to 411 in.	B-138 137 to 138 ft 411 to 414 in.	B-139 138 to 139 ft 414 to 417 in.	B-140 139 to 140 ft 417 to 420 in.	B-141 140 to 141 ft 420 to 423 in.	B-142 141 to 142 ft 423 to 426 in.	B-143 142 to 143 ft 426 to 429 in.	B-144 143 to 144 ft 429 to 432 in.	B-145 144 to 145 ft 432 to 435 in.	B-146 145 to 146 ft 435 to 438 in.	B-147 146 to 147 ft 438 to 441 in.	B-148 147 to 148 ft 441 to 444 in.	B-149 148 to 149 ft 444 to 447 in.	B-150 149 to 150 ft 447 to 450 in.	B-151 150 to 151 ft 450 to 453 in.	B-152 151 to 152 ft 453 to 456 in.	B-153 152 to 153 ft 456 to 459 in.	B-154 153 to 154 ft 459 to 462 in.	B-155 154 to 155 ft 462 to 465 in.	B-156 155 to 156 ft 465 to 468 in.	B-157 156 to 157 ft 468 to 471 in.	B-158 157 to 158 ft 471 to 474 in.	B-159 158 to 159 ft 474 to 477 in.	B-160 159 to 160 ft 477 to 480 in.	B-161 160 to 161 ft 480 to 483 in.	B-162 161 to 162 ft 483 to 486 in.	B-163 162 to 163 ft 486 to 489 in.	B-164 163 to 164 ft 489 to 492 in.	B-165 164 to 165 ft 492 to 495 in.	B-166 165 to 166 ft 495 to 498 in.	B-167 166 to 167 ft 498 to 501 in.	B-168 167 to 168 ft 501 to 504 in.	B-169 168 to 169 ft 504 to 507 in.	B-170 169 to 170 ft 507 to 510 in.	B-171 170 to 171 ft 510 to 513 in.	B-172 171 to 172 ft 513 to 516 in.	B-173 172 to 173 ft 516 to 519 in.	B-174 173 to 174 ft 519 to 522 in.	B-175 174 to 175 ft 522 to 525 in.	B-176 175 to 176 ft 525 to 528 in.	B-177 176 to 177 ft 528 to 531 in.	B-178 177 to 178 ft 531 to 534 in.	B-179 178 to 179 ft 534 to 537 in.	B-180 179 to 180 ft 537 to 540 in.	B-181 180 to 181 ft 540 to 543 in.	B-182 181 to 182 ft 543 to 546 in.	B-183 182 to 183 ft 546 to 549 in.	B-184 183 to 184 ft 549 to 552 in.	B-185 184 to 185 ft 552 to 555 in.	B-186 185 to 186 ft 555 to 558 in.	B-187 186 to 187 ft 558 to 561 in.	B-188 187 to 188 ft 561 to 564 in.	B-189 188 to 189 ft 564 to 567 in.	B-190 189 to 190 ft 567 to 570 in.	B-191 190 to 191 ft 570 to 573 in.	B-192 191 to 192 ft 573 to 576 in.	B-193 192 to 193 ft 576 to 579 in.	B-194 193 to 194 ft 579 to 582 in.	B-195 194 to 195 ft 582 to 585 in.	B-196 195 to 196 ft 585 to 588 in.	B-197 196 to 197 ft 588 to 591 in.	B-198 197 to 198 ft 591 to 594 in.	B-199 198 to 199 ft 594 to 597 in.	B-200 199 to 200 ft 597 to 600 in.	B-201 200 to 201 ft 600 to 603 in.	B-202 201 to 202 ft 603 to 606 in.	B-203 202 to 203 ft 606 to 609 in.	B-204 203 to 204 ft 609 to 612 in.	B-205 204 to 205 ft 612 to 615 in.	B-206 205 to 206 ft 615 to 618 in.	B-207 206 to 207 ft 618 to 621 in.	B-208 207 to 208 ft 621 to 624 in.	B-209 208 to 209 ft 624 to 627 in.	B-210 209 to 210 ft 627 to 630 in.	B-211 210 to 211 ft 630 to 633 in.	B-212 211 to 212 ft 633 to 636 in.	B-213 212 to 213 ft 636 to 639 in.	B-214 213 to 214 ft 639 to 642 in.	B-215 214 to 215 ft 642 to 645 in.	B-216 215 to 216 ft 645 to 648 in.	B-217 216 to 217 ft 648 to 651 in.	B-218 217 to 218 ft 651 to 654 in.	B-219 218 to 219 ft 654 to 657 in.	B-220 219 to 220 ft 657 to 660 in.	B-221 220 to 221 ft 660 to 663 in.	B-222 221 to 222 ft 663 to 666 in.	B-223 222 to 223 ft 666 to 669 in.	B-224 223 to 224 ft 669 to 672 in.	B-225 224 to 225 ft 672 to 675 in.	B-226 225 to 226 ft 675 to 678 in.	B-227 226 to 227 ft 678 to 681 in.	B-228 227 to 228 ft 681 to 684 in.	B-229 228 to 229 ft 684 to 687 in.	B-230 229 to 230 ft 687 to 690 in.	B-231 230 to 231 ft 690 to 693 in.	B-232 231 to 232 ft 693 to 696 in.	B-233 232 to 233 ft 696 to 699 in.	B-234 233 to 234 ft 699 to 702 in.	B-235 234 to 235 ft 702 to 705 in.	B-236 235 to 236 ft 705 to 708 in.	B-237 236 to 237 ft 708 to 711 in.	B-238 237 to 238 ft 711 to 714 in.	B-239 238 to 239 ft 714 to 717 in.	B-240 239 to 240 ft 717 to 720 in.	B-241 240 to 241 ft 720 to 723 in.	B-242 241 to 242 ft 723 to 726 in.	B-243 242 to 243 ft 726 to 729 in.	B-244 243 to 244 ft 729 to 732 in.	B-245 244 to 245 ft 732 to 735 in.	B-246 245 to 246 ft 735 to 738 in.	B-247 246 to 247 ft 738 to 741 in.	B-248 247 to 248 ft 741 to 744 in.	B-249 248 to 249 ft 744 to 747 in.	B-250 249 to 250 ft 747 to 750 in.	B-251 250 to 251 ft 750 to 753 in.	B-252 251 to 252 ft 753 to 756 in.	B-253 252 to 253 ft 756 to 759 in.	B-254 253 to 254 ft 759 to 762 in.	B-255 254 to 255 ft 762 to 765 in.	B-256 255 to 256 ft 765 to 768 in.	B-257 256 to 257 ft 768 to 771 in.	B-258 257 to 258 ft 771 to 774 in.	B-259 258 to 259 ft 774 to 777 in.	B-260 259 to 260 ft 777 to 780 in.	B-261 260 to 261 ft 780 to 783 in.	B-262 261 to 262 ft 783 to 786 in.	B-263 262 to 263 ft 786 to 789 in.	B-264 263 to 264 ft 789 to 792 in.	B-265 264 to 265 ft 792 to 795 in.	B-266 265 to 266 ft 795 to 798 in.	B-267 266 to 267 ft 798 to 801 in.	B-268 267 to 268 ft 801 to 804 in.	B-269 268 to 269 ft 804 to 807 in.	B-270 269 to 270 ft 807 to 810 in.	B-271 270 to 271 ft 810 to 813 in.	B-272 271 to 272 ft 813 to 816 in.	B-273 272 to 273 ft 816 to 819 in.	B-274 273 to 274 ft 819 to 822 in.	B-275 274 to 275 ft 822 to 825 in.	B-276 275 to 276 ft 825 to 828 in.	B-277 276 to 277 ft 828 to 831 in.	B-278 277 to 278 ft 831 to 834 in.	B-279 278 to 279 ft 834 to 837 in.	B-280 279 to 280 ft 837 to 840 in.	B-281 280 to 281 ft 840 to 843 in.	B-282 281 to 282 ft 843 to 846 in.	B-283 282 to 283 ft 846 to 849 in.	B-284 283 to 284 ft 849 to 852 in.	B-285 284 to 285 ft 852 to 855 in.	B-286 285 to 286 ft 855 to 858 in.	B-287 286 to 287 ft 858 to 861 in.	B-288 287 to 288 ft 861 to 864 in.	B-289 288 to 289 ft 864 to 867 in.	B-290 289 to 290 ft 867 to 870 in.	B-291 290 to 291 ft 870 to 873 in.	B-292 291 to 292 ft 873 to 876 in.	B-293 292 to 293 ft 876 to 879 in.	B-294 293 to 294 ft 879 to 882 in.	B-295 294 to 295 ft 882 to 885 in.	B-296 295 to 296 ft 885 to 888 in.	B-297 296 to 297 ft 888 to 891 in.	B-298 297 to 298 ft 891 to 894 in.	B-299 298 to 299 ft 894 to 897 in.	B-300 299 to 300 ft 897 to 900 in.	B-301 300 to 301 ft 900 to 903 in.	B-302 301 to 302 ft 903 to 906 in.	B-303 302 to 303 ft 906 to 909 in.	B-304 303 to 304 ft 909 to 912 in.	B-305 304 to 305 ft 912 to 915 in.	B-306 305 to 306 ft 915 to 918 in.	B-307 306 to 307 ft 918 to 921 in.	B-308 307 to 308 ft 921 to 924 in.	B-309 308 to 309 ft 924 to 927 in.	B-310 309 to 310 ft 927 to 930 in.	B-311 310 to 311 ft 930 to 933 in.	B-312 311 to 312 ft 933 to 936 in.	B-313 312 to 313 ft 936 to 939 in.	B-314 313 to 314 ft 939 to 942 in.	B-315 314 to 315 ft 942 to 945 in.	B-316 315 to 316 ft 945 to 948 in.	B-317 316 to 317 ft 948 to 951 in.	B-318 317 to 318 ft 951 to 954 in.	B-319 318 to 319 ft 954 to 957 in.	B-320 319 to 320 ft 957 to 960 in.	B-321 320 to 321 ft 960 to 963 in.	B-322 321 to 322 ft 963 to 966 in.	B-323 322 to 323 ft 966 to 969 in.	B-324 323 to 324 ft 969 to 972 in.	B-325 324 to 325 ft 972 to 975 in.	B-326 325 to 326 ft 975 to 978 in.	B-327 326 to 327 ft 978 to 981 in.	B-328 327 to 328 ft 981 to 984 in.	B-329 328 to 329 ft 984 to 987 in.	B-330 329 to 330 ft 987 to 990 in.	B-331 330 to 331 ft 990 to 993 in.	B-332 331 to 332 ft 993 to 996 in.	B-333 332 to 333 ft 996 to 999 in.	B-334 333 to 334 ft 999 to 1002 in.	B-335 334 to 335 ft 1002 to 1005 in.	B-336 335 to 336 ft 1005 to 1008 in.	B-337 336 to 337 ft 1008 to 1011 in.	B-338 337 to 338 ft 1011 to 1014 in.	B-339 338 to 339 ft 1014 to 1017 in.	B-340 339 to 340 ft 1017 to 1020 in.	B-341 340 to 341 ft 1020 to 1023 in.	B-342 341 to 342 ft 1023 to 1026 in.	B-343 342 to 343 ft 1026 to 1029 in.	B-344 343 to 344 ft 1029 to 1032 in.	B-345 344 to 345 ft 1032 to 1035 in.	B-346 345 to 346 ft 1035 to 1038 in.	B-347 346 to 347 ft 1038 to 1041 in.	B-348 347 to 348 ft 1041 to 1044 in.	B-349 348 to 349 ft 1044 to 1047 in.	B-350 349 to 350 ft 1047 to 1050 in.	B-351 350 to 351 ft 1050 to 1053 in.	B-352 351 to 352 ft 1053 to 1056 in.	B-353 352 to 353 ft 1056 to 1059 in.	B-354 353 to 354 ft 1059 to 1062 in.	B-355 354 to 355 ft 1062 to 1065 in.	B-356 355 to 356 ft 1065 to 1068 in.	B-357 356 to 357 ft 1068 to 1071 in.	B-358 357 to 358 ft 1071 to 1074 in.	B-359 358 to 359 ft 1074 to 1077 in.	B-360 359 to 360 ft 1077 to 1080 in.	B-361 360 to 361 ft 1080 to 1083 in.	B-362 361 to 362 ft 1083 to 1086 in.	B-363 362 to 363 ft 1086 to 1089 in.	B-364 363 to 364 ft 1089 to 1092 in.	B-365 364 to 365 ft 1092 to 1095 in.	B-366 365 to 366 ft 1095 to 1098 in.	B-367 366 to 367 ft 1098 to 1101 in.	B-368 367 to 368 ft 1101 to 1104 in.	B-369 368 to 369 ft 1104 to 1107 in.	B-370 369 to 370 ft 1107 to 1110 in.	B-371 370 to 371 ft 1110 to 1113 in.	B-372 371 to 372 ft 1113 to 1116 in.	B-373 372 to 373 ft 1116 to 1119 in.	B-374 373 to 374 ft 1119 to 1122 in.	B-375 374 to 375 ft 1122 to 1125 in.	B-376 375 to 376 ft 1125 to 1128 in.	B-377 376 to 377 ft 1128 to 1131 in.	B-378 377 to 378 ft 1131 to 1134 in.	B-379 378 to 379 ft 1134 to 1137 in.	B-380 379 to 380 ft 1137 to 1140 in.	B-381 380 to 381 ft 1140 to 1143 in.	B-382 381 to 382 ft 1143 to 1146 in.	B-383 382 to 383 ft 1146 to 1149 in.	B-384 383 to 384 ft 1149 to 1152 in.	B-385 384 to 385 ft 1152 to 1155 in.	B-386 385 to 386 ft 1155 to 1158 in.	B-387 386 to 387 ft 1158 to 1161 in.	B-388 387 to 388 ft 1161 to 1164 in.	B-389 388 to 389 ft 1164 to 1167 in.	B-390 389 to 390 ft 1167 to 1170 in.	B-391 390 to 391 ft 1170 to 1173 in.	B-392 391 to 392 ft 1173 to 1176 in.	B-393 392 to 393 ft 1176 to 1179 in.	B-394 393 to 394 ft 1179 to 1182 in.	B-395 394 to 395 ft 1182 to 1185 in.	B-396 395 to 396 ft 1185 to 1188 in.	B-397 396 to 397 ft 1188 to 1191 in.	B-398 397 to 398 ft 1191 to 1194 in.	B-399 398 to 399 ft 1194 to 1197 in.	B-400 399 to 400 ft 1197 to 1200 in.	B-401 400 to 401 ft 1200 to 1203 in.	B-402 401 to 402 ft 1203 to 1206 in.	B-403 402 to 403 ft 1206 to 1209 in.	B-404 403 to 404 ft 1209 to 1212 in.

Notes:

NTSDEC TACM - Recommended Soil Cleanup Objectives.

HWR-94-006, Revised 4/95 and 2000 NYSDEC STARS.

RSCD - Recommended Soil Cleanup Objective.

EUSA BG - Eastern USA Background

ND - Analyte was not detected above method detection limit.

NA - Not Analyzed / Not Available.

B - Analyte listed in the associated Method Blank

SB - Sample below background concentration

Bolded values indicate detected concentration exceeded NYSDEC EUSA and applicable eastern US background concentration.

Italicized and underlined values indicate metal was detected above EUSA but below eastern US background concentration.

Table 2
TAL Metals Detected in Soil Samples
Hernan Avenue, Lattingtown, New York

TAL Metals Detected	B-1 6 to 1 ft.	B-2 1 to 2 ft.	B-3 2 to 2.5 ft.	B-4 2.5 to 3 ft.	B-5 3 to 3.5 ft.	B-6 3.5 to 4 ft.	B-7 4 to 4.5 ft.	B-8 4.5 to 5 ft.	B-9 5 to 5.5 ft.	B-10 5.5 to 6 ft.	B-11 6 to 6.5 ft.	B-12 6.5 to 7 ft.	B-13 7 to 7.5 ft.	B-14 7.5 to 8 ft.	B-15 8 to 8.5 ft.	B-16 8.5 to 9 ft.	B-17 9 to 9.5 ft.	B-18 9.5 to 10 ft.	B-19 10 to 10.5 ft.	B-20 10.5 to 11 ft.	B-21 11 to 11.5 ft.	B-22 11.5 to 12 ft.	B-23 12 to 12.5 ft.	B-24 12.5 to 13 ft.	B-25 13 to 13.5 ft.	B-26 13.5 to 14 ft.	B-27 14 to 14.5 ft.	B-28 14.5 to 15 ft.	B-29 15 to 15.5 ft.	B-30 15.5 to 16 ft.	B-31 16 to 16.5 ft.	B-32 16.5 to 17 ft.	B-33 17 to 17.5 ft.	B-34 17.5 to 18 ft.	B-35 18 to 18.5 ft.	B-36 18.5 to 19 ft.	B-37 19 to 19.5 ft.	B-38 19.5 to 20 ft.	B-39 20 to 20.5 ft.	B-40 20.5 to 21 ft.	B-41 21 to 21.5 ft.	B-42 21.5 to 22 ft.	B-43 22 to 22.5 ft.	B-44 22.5 to 23 ft.	B-45 23 to 23.5 ft.	B-46 23.5 to 24 ft.	B-47 24 to 24.5 ft.	B-48 24.5 to 25 ft.	B-49 25 to 25.5 ft.	B-50 25.5 to 26 ft.	B-51 26 to 26.5 ft.	B-52 26.5 to 27 ft.	B-53 27 to 27.5 ft.	B-54 27.5 to 28 ft.	B-55 28 to 28.5 ft.	B-56 28.5 to 29 ft.	B-57 29 to 29.5 ft.	B-58 29.5 to 30 ft.	B-59 30 to 30.5 ft.	B-60 30.5 to 31 ft.	B-61 31 to 31.5 ft.	B-62 31.5 to 32 ft.	B-63 32 to 32.5 ft.	B-64 32.5 to 33 ft.	B-65 33 to 33.5 ft.	B-66 33.5 to 34 ft.	B-67 34 to 34.5 ft.	B-68 34.5 to 35 ft.	B-69 35 to 35.5 ft.	B-70 35.5 to 36 ft.	B-71 36 to 36.5 ft.	B-72 36.5 to 37 ft.	B-73 37 to 37.5 ft.	B-74 37.5 to 38 ft.	B-75 38 to 38.5 ft.	B-76 38.5 to 39 ft.	B-77 39 to 39.5 ft.	B-78 39.5 to 40 ft.	B-79 40 to 40.5 ft.	B-80 40.5 to 41 ft.	B-81 41 to 41.5 ft.	B-82 41.5 to 42 ft.	B-83 42 to 42.5 ft.	B-84 42.5 to 43 ft.	B-85 43 to 43.5 ft.	B-86 43.5 to 44 ft.	B-87 44 to 44.5 ft.	B-88 44.5 to 45 ft.	B-89 45 to 45.5 ft.	B-90 45.5 to 46 ft.	B-91 46 to 46.5 ft.	B-92 46.5 to 47 ft.	B-93 47 to 47.5 ft.	B-94 47.5 to 48 ft.	B-95 48 to 48.5 ft.	B-96 48.5 to 49 ft.	B-97 49 to 49.5 ft.	B-98 49.5 to 50 ft.	B-99 50 to 50.5 ft.	B-100 50.5 to 51 ft.	B-101 51 to 51.5 ft.	B-102 51.5 to 52 ft.	B-103 52 to 52.5 ft.	B-104 52.5 to 53 ft.	B-105 53 to 53.5 ft.	B-106 53.5 to 54 ft.	B-107 54 to 54.5 ft.	B-108 54.5 to 55 ft.	B-109 55 to 55.5 ft.	B-110 55.5 to 56 ft.	B-111 56 to 56.5 ft.	B-112 56.5 to 57 ft.	B-113 57 to 57.5 ft.	B-114 57.5 to 58 ft.	B-115 58 to 58.5 ft.	B-116 58.5 to 59 ft.	B-117 59 to 59.5 ft.	B-118 59.5 to 60 ft.	B-119 60 to 60.5 ft.	B-120 60.5 to 61 ft.	B-121 61 to 61.5 ft.	B-122 61.5 to 62 ft.	B-123 62 to 62.5 ft.	B-124 62.5 to 63 ft.	B-125 63 to 63.5 ft.	B-126 63.5 to 64 ft.	B-127 64 to 64.5 ft.	B-128 64.5 to 65 ft.	B-129 65 to 65.5 ft.	B-130 65.5 to 66 ft.	B-131 66 to 66.5 ft.	B-132 66.5 to 67 ft.	B-133 67 to 67.5 ft.	B-134 67.5 to 68 ft.	B-135 68 to 68.5 ft.	B-136 68.5 to 69 ft.	B-137 69 to 69.5 ft.	B-138 69.5 to 70 ft.	B-139 70 to 70.5 ft.	B-140 70.5 to 71 ft.	B-141 71 to 71.5 ft.	B-142 71.5 to 72 ft.	B-143 72 to 72.5 ft.	B-144 72.5 to 73 ft.	B-145 73 to 73.5 ft.	B-146 73.5 to 74 ft.	B-147 74 to 74.5 ft.	B-148 74.5 to 75 ft.	B-149 75 to 75.5 ft.	B-150 75.5 to 76 ft.	B-151 76 to 76.5 ft.	B-152 76.5 to 77 ft.	B-153 77 to 77.5 ft.	B-154 77.5 to 78 ft.	B-155 78 to 78.5 ft.	B-156 78.5 to 79 ft.	B-157 79 to 79.5 ft.	B-158 79.5 to 80 ft.	B-159 80 to 80.5 ft.	B-160 80.5 to 81 ft.	B-161 81 to 81.5 ft.	B-162 81.5 to 82 ft.	B-163 82 to 82.5 ft.	B-164 82.5 to 83 ft.	B-165 83 to 83.5 ft.	B-166 83.5 to 84 ft.	B-167 84 to 84.5 ft.	B-168 84.5 to 85 ft.	B-169 85 to 85.5 ft.	B-170 85.5 to 86 ft.	B-171 86 to 86.5 ft.	B-172 86.5 to 87 ft.	B-173 87 to 87.5 ft.	B-174 87.5 to 88 ft.	B-175 88 to 88.5 ft.	B-176 88.5 to 89 ft.	B-177 89 to 89.5 ft.	B-178 89.5 to 90 ft.	B-179 90 to 90.5 ft.	B-180 90.5 to 91 ft.	B-181 91 to 91.5 ft.	B-182 91.5 to 92 ft.	B-183 92 to 92.5 ft.	B-184 92.5 to 93 ft.	B-185 93 to 93.5 ft.	B-186 93.5 to 94 ft.	B-187 94 to 94.5 ft.	B-188 94.5 to 95 ft.	B-189 95 to 95.5 ft.	B-190 95.5 to 96 ft.	B-191 96 to 96.5 ft.	B-192 96.5 to 97 ft.	B-193 97 to 97.5 ft.	B-194 97.5 to 98 ft.	B-195 98 to 98.5 ft.	B-196 98.5 to 99 ft.	B-197 99 to 99.5 ft.	B-198 99.5 to 100 ft.	B-199 100 to 100.5 ft.	B-200 100.5 to 101 ft.	B-201 101 to 101.5 ft.	B-202 101.5 to 102 ft.	B-203 102 to 102.5 ft.	B-204 102.5 to 103 ft.	B-205 103 to 103.5 ft.	B-206 103.5 to 104 ft.	B-207 104 to 104.5 ft.	B-208 104.5 to 105 ft.	B-209 105 to 105.5 ft.	B-210 105.5 to 106 ft.	B-211 106 to 106.5 ft.	B-212 106.5 to 107 ft.	B-213 107 to 107.5 ft.	B-214 107.5 to 108 ft.	B-215 108 to 108.5 ft.	B-216 108.5 to 109 ft.	B-217 109 to 109.5 ft.	B-218 109.5 to 110 ft.	B-219 110 to 110.5 ft.	B-220 110.5 to 111 ft.	B-221 111 to 111.5 ft.	B-222 111.5 to 112 ft.	B-223 112 to 112.5 ft.	B-224 112.5 to 113 ft.	B-225 113 to 113.5 ft.	B-226 113.5 to 114 ft.	B-227 114 to 114.5 ft.	B-228 114.5 to 115 ft.	B-229 115 to 115.5 ft.	B-230 115.5 to 116 ft.	B-231 116 to 116.5 ft.	B-232 116.5 to 117 ft.	B-233 117 to 117.5 ft.	B-234 117.5 to 118 ft.	B-235 118 to 118.5 ft.	B-236 118.5 to 119 ft.	B-237 119 to 119.5 ft.	B-238 119.5 to 120 ft.	B-239 120 to 120.5 ft.	B-240 120.5 to 121 ft.	B-241 121 to 121.5 ft.	B-242 121.5 to 122 ft.	B-243 122 to 122.5 ft.	B-244 122.5 to 123 ft.	B-245 123 to 123.5 ft.	B-246 123.5 to 124 ft.	B-247 124 to 124.5 ft.	B-248 124.5 to 125 ft.	B-249 125 to 125.5 ft.	B-250 125.5 to 126 ft.	B-251 126 to 126.5 ft.	B-252 126.5 to 127 ft.	B-253 127 to 127.5 ft.	B-254 127.5 to 128 ft.	B-255 128 to 128.5 ft.	B-256 128.5 to 129 ft.	B-257 129 to 129.5 ft.	B-258 129.5 to 130 ft.	B-259 130 to 130.5 ft.	B-260 130.5 to 131 ft.	B-261 131 to 131.5 ft.	B-262 131.5 to 132 ft.	B-263 132 to 132.5 ft.	B-264 132.5 to 133 ft.	B-265 133 to 133.5 ft.	B-266 133.5 to 134 ft.	B-267 134 to 134.5 ft.	B-268 134.5 to 135 ft.	B-269 135 to 135.5 ft.	B-270 135.5 to 136 ft.	B-271 136 to 136.5 ft.	B-272 136.5 to 137 ft.	B-273 137 to 137.5 ft.	B-274 137.5 to 138 ft.	B-275 138 to 138.5 ft.	B-276 138.5 to 139 ft.	B-277 139 to 139.5 ft.	B-278 139.5 to 140 ft.	B-279 140 to 140.5 ft.	B-280 140.5 to 141 ft.	B-281 141 to 141.5 ft.	B-282 141.5 to 142 ft.	B-283 142 to 142.5 ft.	B-284 142.5 to 143 ft.	B-285 143 to 143.5 ft.	B-286 143.5 to 144 ft.	B-287 144 to 144.5 ft.	B-288 144.5 to 145 ft.	B-289 145 to 145.5 ft.	B-290 145.5 to 146 ft.	B-291 146 to 146.5 ft.	B-292 146.5 to 147 ft.	B-293 147 to 147.5 ft.	B-294 147.5 to 148 ft.	B-295 148 to 148.5 ft.	B-296 148.5 to 149 ft.	B-297 149 to 149.5 ft.	B-298 149.5 to 150 ft.	B-299 150 to 150.5 ft.	B-300 150.5 to 151 ft.	B-301 151 to 151.5 ft.	B-302 151.5 to 152 ft.	B-303 152 to 152.5 ft.	B-304 152.5 to 153 ft.	B-305 153 to 153.5 ft.	B-306 153.5 to 154 ft.	B-307 154 to 154.5 ft.	B-308 154.5 to 155 ft.	B-309 155 to 155.5 ft.	B-310 155.5 to 156 ft.	B-311 156 to 156.5 ft.	B-312 156.5 to 157 ft.	B-313 157 to 157.5 ft.	B-314 157.5 to 158 ft.	B-315 158 to 158.5 ft.	B-316 158.5 to 159 ft.	B-317 159 to 159.5 ft.	B-318 159.5 to 160 ft.	B-319 160 to 160.5 ft.	B-320 160.5 to 161 ft.	B-321 161 to 161.5 ft.	B-322 161.5 to 162 ft.	B-323 162 to 162.5 ft.	B-324 162.5 to 163 ft.	B-325 163 to 163.5 ft.	B-326 163.5 to 164 ft.	B-327 164 to 164.5 ft.	B-328 164.5 to 165 ft.	B-329 165 to 165.5 ft.	B-330 165.5 to 166 ft.	B-331 166 to 166.5 ft.	B-332 166.5 to 167 ft.	B-333 167 to 167.5 ft.	B-334 167.5 to 168 ft.	B-335 168 to 168.5 ft.	B-336 168.5 to 169 ft.	B-337 169 to 169.5 ft.	B-338 169.5 to 170 ft.	B-339 170 to 170.5 ft.	B-340 170.5 to 171 ft.	B-341 171 to 171.5 ft.	B-342 171.5 to 172 ft.	B-343 172 to 172.5 ft.	B-344 172.5 to 173 ft.	B-345 173 to 173.5 ft.	B-346 173.5 to 174 ft.	B-347 174 to 174.5 ft.	B-348 174.5 to 175 ft.	B-349 175 to 175.5 ft.	B-350 175.5 to 176 ft.	B-351 176 to 176.5 ft.	B-352 176.5 to 177 ft.	B-353 177 to 177.5 ft.	B-354 177.5 to 178 ft.	B-355 178 to 178.5 ft.	B-356 178.5 to 179 ft.	B-357 179 to 179.5 ft.	B-358 179.5 to 180 ft.	B-359 180 to 180.5 ft.	B-360 180.5 to 181 ft.	B-361 181 to 181.5 ft.	B-362 181.5 to 182 ft.	B-363 182 to 182.5 ft.	B-364 182.5 to 183 ft.	B-365 183 to 183.5 ft.	B-366 183.5 to 184 ft.	B-367 184 to 184.5 ft.	B-368 184.5 to 185 ft.	B-369 185 to 185.5 ft.	B-370 185.5 to 186 ft.	B-371 186 to 186.5 ft.	B-372 186.5 to 187 ft.	B-373 187 to 187.5 ft.	B-374 187.5 to 188 ft.	B-375 188 to 188.5 ft.	B-376 188.5 to 189 ft.	B-377 189 to 189.5 ft.	B-378 189.5 to 190 ft.	B-379 190 to 190.5 ft.	B-380 190.5 to 191 ft.	B-381 191 to 191.5 ft.	B-382 191.5 to 192 ft.	B-383 192 to 192.5 ft.	B-384 192.5 to 193 ft.	B-385 193 to 193.5 ft.	B-386 193.5 to 194 ft.	B-387 194 to 194.5 ft.	B-388 194.5 to 195 ft.	B-389 195 to 195.5 ft.	B-390 195.5 to 196 ft.	B-391 196 to 196.5 ft.	B-392 196.5 to 197 ft.	B-393 197 to 197.5 ft.	B-394 197.5 to 198 ft.	B-395 198 to 198.5 ft.	B-396 198.5 to 199 ft.	B-397 199 to 199.5 ft.	B-398 199.5 to 200 ft.	B-399 200 to 200.5 ft.	B-400 200.5 to 201 ft.	B-401 201 to 201.5 ft.	B-402 201.5 to 202 ft.	B-403 202 to 202.5 ft.	B-404 202.5 to 203 ft.	B-405 203 to 203.5 ft.	B-406 203.5 to 204 ft.	B-407 204 to 204.5 ft.	B-408 204.5 to 205 ft.	B-409 205 to 205.5 ft.	B-410 205.5 to 206 ft.	B-411 206 to 206.5 ft.	B-412 206.5 to 207 ft.	B-413 207 to 207.5 ft.	B-414 207.5 to 208 ft.	B-415 208 to 208.5 ft.	B-416 208.5 to 209 ft.	B-417 209 to 209.5 ft.	B-418 209.5 to 210 ft.	B-419 210 to 210.5 ft.	B-420 210.5 to 211 ft.	B-421 211 to 211.5 ft.	B-422 211.5 to 212 ft.	B-423 212 to 212.5 ft.	B-424 212.5 to 213 ft.	B-425 213 to 213.5 ft.	B-426 213.5 to 214 ft.	B-427 214 to 214.5 ft.	B-428 214.5 to 215 ft.	B-429 215 to 215.5 ft.	B-430 215.5 to 216 ft.	B-431 216 to 216.5 ft.	B-432 216.5 to 217 ft.	B-433 217 to 217.5 ft.	B-434 217.5 to 218 ft.	B-435 218 to 218.5 ft.	B-436 218.5 to 219 ft.	B-437 219 to 219.5 ft.	B-438 219.5 to 220 ft.	B-439 220 to 220.5 ft.	B-440 220.5 to 221 ft.	B-441 221 to 221.5 ft.	B-442 221.5 to 222 ft.	B-443 222 to 222.5 ft.	B-444 222.5 to 223 ft.	B-445 223 to 223.5 ft.	B-446 223.5 to 224 ft.	B-447 224 to 224.5 ft.	B-448 224.5 to 225 ft.	B-449 225 to 225.5 ft.	B-450 225.5 to 226 ft.	B-451 226 to 226.5 ft.	B-452 226.5 to 227 ft.	B-453 227 to 227.5 ft.	B-454 227.5 to 228 ft.	B-455 228 to 228.5 ft.	B-456 228.5 to 229 ft.	B-457 229 to 229.5 ft.	B-458 229.5 to 230 ft.	B-459 230 to 230.5 ft.	B-460 230.5 to 231 ft.	B-461 231 to 231.5 ft.	B-462 231.5 to 232 ft.	B-463 232 to 232.5 ft.	B-464 232.5 to 233 ft.	B-465 233 to 233.5 ft.	B-466 233.5 to 234 ft.	B-467 234 to 234.5 ft.	B-468 234.5 to 235 ft.	B-469 235 to 235.5 ft.	B-470 235.5 to 236 ft.	B-471 236 to 236.5 ft.	B-472 236.5 to 237 ft.	B-473 237 to 237.5 ft.	B-474 237.5 to 238 ft.	B-475 238 to 238.5 ft.	B-476 238.5 to 239 ft.	B-477 239 to 239.5 ft.	B-478 239.5 to 240 ft.	B-479 240 to 240.5 ft.	B-480 240.5 to 241 ft.	B-481 241 to 241.5 ft.	B-482 241.5 to 242 ft.	B-483 242 to 242.5 ft.	B-484 242.5 to 243 ft.	B-485 243 to 243.5 ft.	B-486 243.5 to 244 ft.	B-487 244 to 244.5 ft.	B-488 244.5 to 245 ft.	B-489 245 to 245.5 ft.	B-490 245.5 to 246 ft.	B-491 246 to 246.5 ft.	B-492 246.5 to 247 ft.	B-493 247 to 247.5 ft.	B-494 247.5 to 248 ft.	B-495 248 to 248.5 ft.	B-496 248.5 to 249 ft.	B-497 249 to 249.5 ft.	B-498 249.5 to 250 ft.	B-499 250 to 250.5 ft.	B-500 250.5 to 251 ft.	B-501 251 to 251.5 ft.	B-502 251.5 to 252 ft.	B-503 252 to 252.5 ft.	B-504 252.5 to 253 ft.	B-505 253 to 253.5 ft.	B-506 253.5 to 254 ft.	B-507 254 to 254.5 ft.	B-508 254.5 to 255 ft.	B-509 255 to 255.5 ft.	B-510 255.5 to 256 ft.	B-511 256 to 256.5 ft.	B-512 256.5 to 257 ft.	B-513 257 to 257.5 ft.	B-514 257.5 to 258 ft.	B-515 258 to 258.5 ft.	B-516 258.5 to 259 ft.	B-517 259 to 259.5 ft.	B-518 259.5 to 260 ft.	B-519 260 to 260.5 ft.	B-520 260.5 to 261 ft.	B-521 261 to 261.5 ft.	B-522 261.5 to 262 ft.	B-523 262 to 262.5 ft.	B-524 262.5 to 263 ft.	B-525 263 to 263.5 ft.	B-526 263.5 to 264 ft.	B-527 264 to 264.5 ft.	B-528 264.5 to 265 ft.	B-529 265 to 265.5 ft.	B-530 265.5 to 266 ft.	B-531 266 to 266.5 ft.	B-532 266.5 to 267 ft.	B-533 267 to 267.5 ft.	B-534 267.5 to 268 ft.	B-535 268 to 268.5 ft.	B-536 268.5 to 269 ft.	B-537 269 to 269.5 ft.	B-538 269.5 to 270 ft.	B-539 270 to 270.5 ft.	B-540 270.5 to 271 ft.	B-541 271 to 271.5 ft.	B-542 271.5 to 272 ft.	B-543 272 to 272.5 ft.	B-544 272.5 to 273 ft.	B-545 273 to 273.5 ft.	B-546 273.5 to 274 ft.	B-547 274 to 274.5 ft.	B-548 274.5 to 275 ft.	B-549 275 to 275.5 ft.	B-550 275.5 to 276 ft.	B-551 276 to 276.5 ft.	B-552 276.5 to 277 ft.	B-553 277 to 277.5 ft.	B-554 277.5 to 278 ft.	B-555 278 to 278.5 ft.	B-556 278.5 to 279 ft.	B-557 279 to 279.5 ft.	B-558 279.5 to 280 ft.	B-559 280 to 280.5 ft.	B-560 280.5 to 281 ft.	B-561 281 to 281.5 ft.	B-562 281.5 to 282 ft.	B-563 282 to 282.5 ft.	B-564 282.5 to 283 ft.	B-565 283 to 283.5 ft.	B-566 283.5 to 284 ft.	B-567 284 to 284.5 ft.	B-568 284.5 to 285 ft.	B-569 285 to 285.5 ft.	B-570 285.5 to 286 ft.	B-571 286 to 286.5 ft.	B-572 286.5 to 287 ft.	B-573 287 to 287.5 ft.	B-574 287.5 to 288 ft.	B-575 288 to 288.5 ft.	B-576 288.5 to 289 ft.	B-577 289 to 289.5 ft.	B-578 289.5 to 290 ft.	B-579 290 to 290.5 ft.	B-580 290.5 to 291 ft.	B-581 291 to 291.5 ft.	B-582 291.5 to 292 ft.	B-583 292 to 292.5 ft.
---------------------	-------------------	-------------------	---------------------	---------------------	---------------------	---------------------	---------------------	---------------------	---------------------	----------------------	----------------------	----------------------	----------------------	----------------------	----------------------	----------------------	----------------------	-----------------------	------------------------	------------------------	------------------------	------------------------	------------------------	------------------------	------------------------	------------------------	------------------------	------------------------	------------------------	------------------------	------------------------	------------------------	------------------------	------------------------	------------------------	------------------------	------------------------	------------------------	------------------------	------------------------	------------------------	------------------------	------------------------	------------------------	------------------------	------------------------	------------------------	------------------------	------------------------	------------------------	------------------------	------------------------	------------------------	------------------------	------------------------	------------------------	------------------------	------------------------	------------------------	------------------------	------------------------	------------------------	------------------------	------------------------	------------------------	------------------------	------------------------	------------------------	------------------------	------------------------	------------------------	------------------------	------------------------	------------------------	------------------------	------------------------	------------------------	------------------------	------------------------	------------------------	------------------------	------------------------	------------------------	------------------------	------------------------	------------------------	------------------------	------------------------	------------------------	------------------------	------------------------	------------------------	------------------------	------------------------	------------------------	------------------------	------------------------	------------------------	------------------------	-------------------------	-------------------------	-------------------------	-------------------------	-------------------------	-------------------------	-------------------------	-------------------------	-------------------------	-------------------------	-------------------------	-------------------------	-------------------------	-------------------------	-------------------------	-------------------------	-------------------------	-------------------------	-------------------------	-------------------------	-------------------------	-------------------------	-------------------------	-------------------------	-------------------------	-------------------------	-------------------------	-------------------------	-------------------------	-------------------------	-------------------------	-------------------------	-------------------------	-------------------------	-------------------------	-------------------------	-------------------------	-------------------------	-------------------------	-------------------------	-------------------------	-------------------------	-------------------------	-------------------------	-------------------------	-------------------------	-------------------------	-------------------------	-------------------------	-------------------------	-------------------------	-------------------------	-------------------------	-------------------------	-------------------------	-------------------------	-------------------------	-------------------------	-------------------------	-------------------------	-------------------------	-------------------------	-------------------------	-------------------------	-------------------------	-------------------------	-------------------------	-------------------------	-------------------------	-------------------------	-------------------------	-------------------------	-------------------------	-------------------------	-------------------------	-------------------------	-------------------------	-------------------------	-------------------------	-------------------------	-------------------------	-------------------------	-------------------------	-------------------------	-------------------------	-------------------------	-------------------------	-------------------------	-------------------------	-------------------------	-------------------------	-------------------------	-------------------------	-------------------------	-------------------------	-------------------------	-------------------------	-------------------------	--------------------------	---------------------------	---------------------------	---------------------------	---------------------------	---------------------------	---------------------------	---------------------------	---------------------------	---------------------------	---------------------------	---------------------------	---------------------------	---------------------------	---------------------------	---------------------------	---------------------------	---------------------------	---------------------------	---------------------------	---------------------------	---------------------------	---------------------------	---------------------------	---------------------------	---------------------------	---------------------------	---------------------------	---------------------------	---------------------------	---------------------------	---------------------------	---------------------------	---------------------------	---------------------------	---------------------------	---------------------------	---------------------------	---------------------------	---------------------------	---------------------------	---------------------------	---------------------------	---------------------------	---------------------------	---------------------------	---------------------------	---------------------------	---------------------------	---------------------------	---------------------------	---------------------------	---------------------------	---------------------------	---------------------------	---------------------------	---------------------------	---------------------------	---------------------------	---------------------------	---------------------------	---------------------------	---------------------------	---------------------------	---------------------------	---------------------------	---------------------------	---------------------------	---------------------------	---------------------------	---------------------------	---------------------------	---------------------------	---------------------------	---------------------------	---------------------------	---------------------------	---------------------------	---------------------------	---------------------------	---------------------------	---------------------------	---------------------------	---------------------------	---------------------------	---------------------------	---------------------------	---------------------------	---------------------------	---------------------------	---------------------------	---------------------------	---------------------------	---------------------------	---------------------------	---------------------------	---------------------------	---------------------------	---------------------------	---------------------------	---------------------------	---------------------------	---------------------------	---------------------------	---------------------------	---------------------------	---------------------------	---------------------------	---------------------------	---------------------------	---------------------------	---------------------------	---------------------------	---------------------------	---------------------------	---------------------------	---------------------------	---------------------------	---------------------------	---------------------------	---------------------------	---------------------------	---------------------------	---------------------------	---------------------------	---------------------------	---------------------------	---------------------------	---------------------------	---------------------------	---------------------------	---------------------------	---------------------------	---------------------------	---------------------------	---------------------------	---------------------------	---------------------------	---------------------------	---------------------------	---------------------------	---------------------------	---------------------------	---------------------------	---------------------------	---------------------------	---------------------------	---------------------------	---------------------------	---------------------------	---------------------------	---------------------------	---------------------------	---------------------------	---------------------------	---------------------------	---------------------------	---------------------------	---------------------------	---------------------------	---------------------------	---------------------------	---------------------------	---------------------------	---------------------------	---------------------------	---------------------------	---------------------------	---------------------------	---------------------------	---------------------------	---------------------------	---------------------------	---------------------------	---------------------------	---------------------------	---------------------------	---------------------------	---------------------------	---------------------------	---------------------------	---------------------------	---------------------------	---------------------------	---------------------------	---------------------------	---------------------------	---------------------------	---------------------------	---------------------------	---------------------------	---------------------------	---------------------------	---------------------------	---------------------------	---------------------------	---------------------------	---------------------------	---------------------------	---------------------------	---------------------------	---------------------------	---------------------------	---------------------------	---------------------------	---------------------------	---------------------------	---------------------------	---------------------------	---------------------------	---------------------------	---------------------------	---------------------------	---------------------------	---------------------------	---------------------------	---------------------------	---------------------------	---------------------------	---------------------------	---------------------------	---------------------------	---------------------------	---------------------------	---------------------------	---------------------------	---------------------------	---------------------------	---------------------------	---------------------------	---------------------------	---------------------------	---------------------------	---------------------------	---------------------------	---------------------------	---------------------------	---------------------------	---------------------------	---------------------------	---------------------------	---------------------------	---------------------------	---------------------------	---------------------------	---------------------------	---------------------------	---------------------------	---------------------------	---------------------------	---------------------------	---------------------------	---------------------------	---------------------------	---------------------------	---------------------------	---------------------------	---------------------------	---------------------------	---------------------------	---------------------------	---------------------------	---------------------------	---------------------------	---------------------------	---------------------------	---------------------------	---------------------------	---------------------------	---------------------------	---------------------------	---------------------------	---------------------------	---------------------------	---------------------------	---------------------------	---------------------------	---------------------------	---------------------------	---------------------------	---------------------------	---------------------------	---------------------------	---------------------------	---------------------------	---------------------------	---------------------------	---------------------------	---------------------------	---------------------------	---------------------------	---------------------------	---------------------------	---------------------------	---------------------------	---------------------------	---------------------------	---------------------------	---------------------------	---------------------------	---------------------------	---------------------------	---------------------------	---------------------------	---------------------------	---------------------------	---------------------------	---------------------------	---------------------------	---------------------------	---------------------------	---------------------------	---------------------------	---------------------------	---------------------------	---------------------------	---------------------------	---------------------------	---------------------------	---------------------------	---------------------------	---------------------------	---------------------------	---------------------------	---------------------------	---------------------------	---------------------------	---------------------------	---------------------------	---------------------------	---------------------------	---------------------------	---------------------------	---------------------------	---------------------------	---------------------------	---------------------------	---------------------------	---------------------------	---------------------------	---------------------------	---------------------------	---------------------------	---------------------------	---------------------------	---------------------------	---------------------------	---------------------------	---------------------------	---------------------------	---------------------------	---------------------------	---------------------------	---------------------------	---------------------------	---------------------------	---------------------------	---------------------------	---------------------------	---------------------------	---------------------------	---------------------------	---------------------------	---------------------------	---------------------------	---------------------------	---------------------------	---------------------------	---------------------------	---------------------------	---------------------------	---------------------------	---------------------------	---------------------------	---------------------------	---------------------------	---------------------------	---------------------------	---------------------------	---------------------------	---------------------------	---------------------------	---------------------------	---------------------------	---------------------------	---------------------------

FIGURES

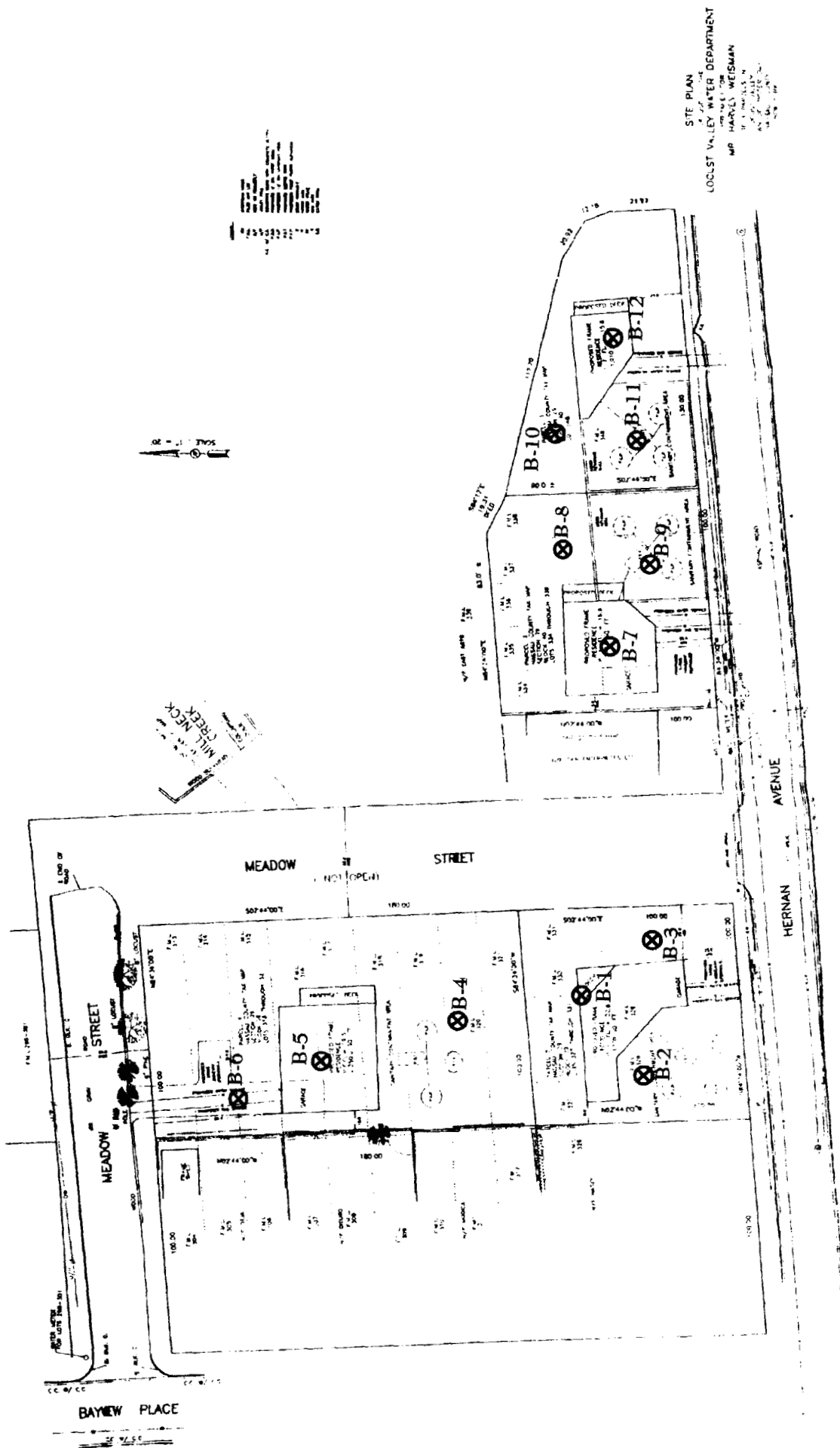
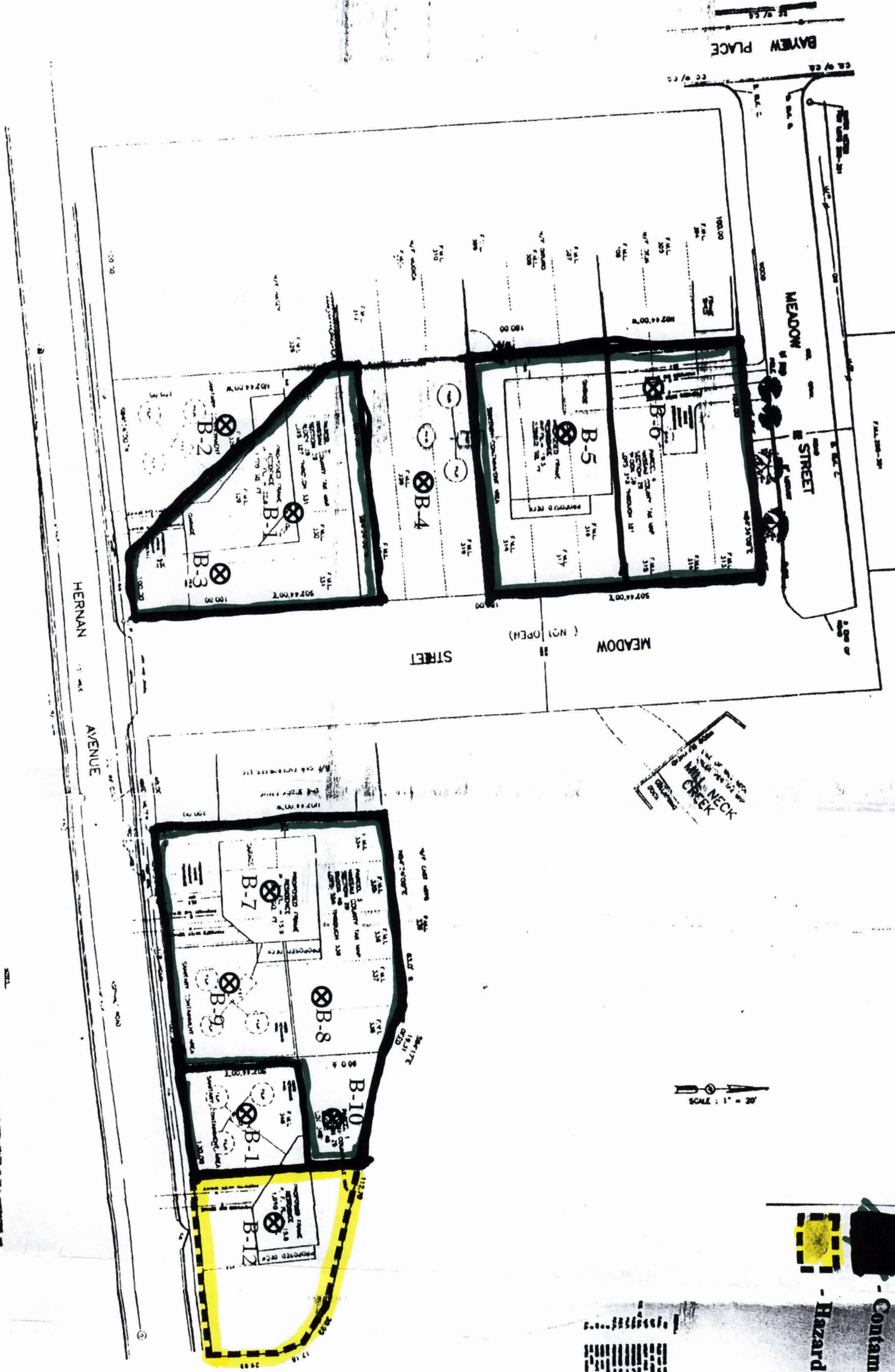


Figure 1 - Sampling Locations

Hernan Avenue
Locust Valley, New York

Berninger Environmental, Inc.
90 Knickerbocker Avenue
Bohemia, New York 11716





1. The impact areas shown on this map are based on the results of the soil sampling and analysis conducted by the New York State Department of Environmental Conservation (NYS DEC) and the New York State Office of General Services (NYS OGS) in 1998. The impact areas are based on the results of the soil sampling and analysis conducted by the NYS DEC and the NYS OGS in 1998. The impact areas are based on the results of the soil sampling and analysis conducted by the NYS DEC and the NYS OGS in 1998.

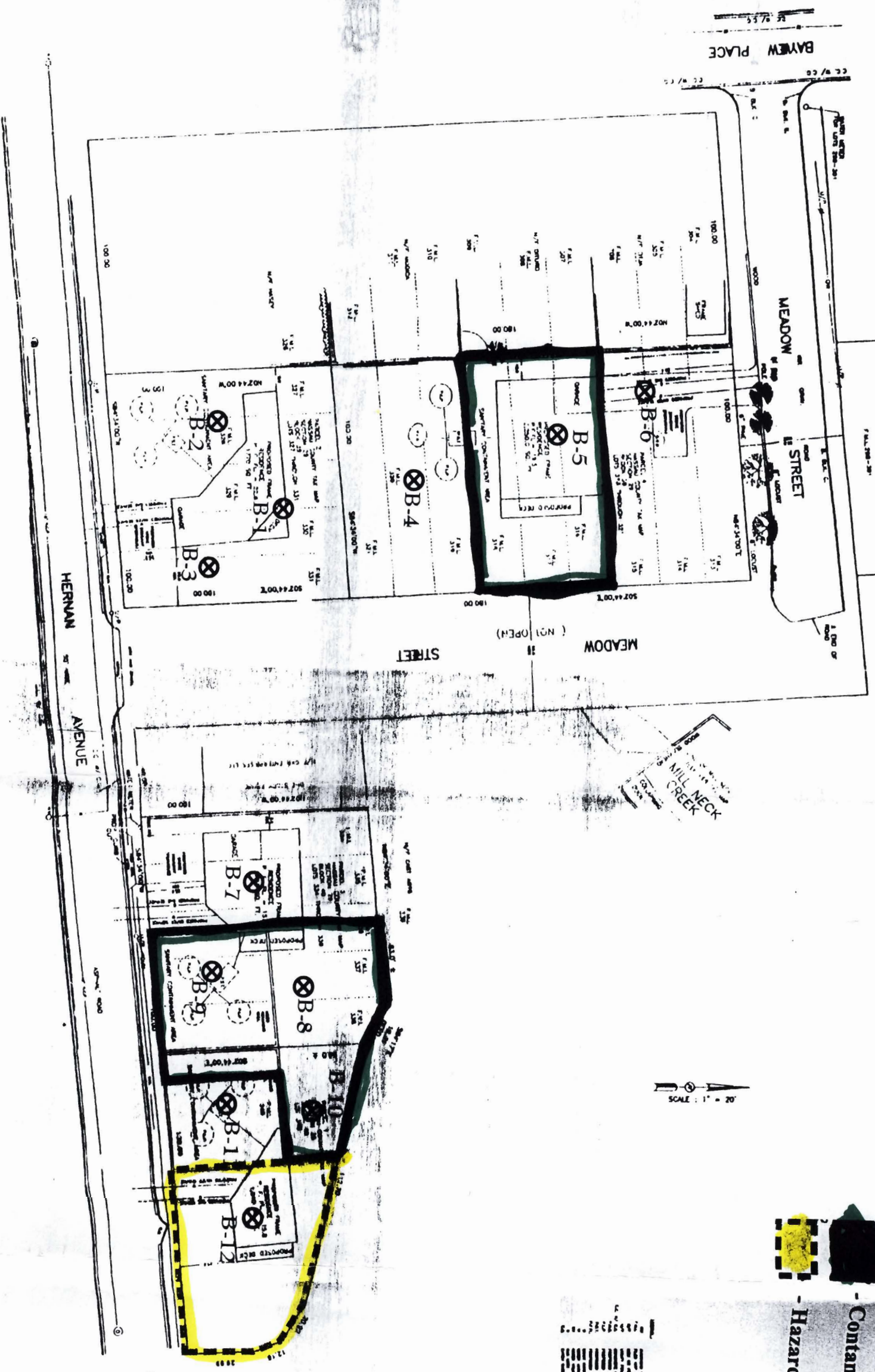
SITE PLAN
LOCUST VALLEY WATER DEPARTMENT
MR. HARVEY WEISMAN
1000 LOCUST VALLEY ROAD
LOCUST VALLEY, NY 11751

Figure 2A - Estimated Areas of Shallow Soil Impacts

Hernan Avenue
Lattingtown, New York

Berninger Environmental, Inc.
90 Knickerbocker Avenue
Bohemia, New York 11716

 - Contaminated Soils
 - Hazardous Soils



SITE PLAN
 LOCUST VALLEY WATER DEPARTMENT
 MR. HARVEY WEISMAN
 3000 LOCUST VALLEY
 BOHEMIA, NEW YORK 11716

1) The areas shown on this map are the estimated areas of deeper soil impacts based on the results of the soil sampling program conducted by the Locust Valley Water Department. The areas are not intended to be a definitive statement of the extent of the impacts.

Figure 2B - Estimated Areas of Deeper Soil Impacts

Hernan Avenue
 Lattingtown, New York

Berninger Environmental, Inc.
 90 Knickerbocker Avenue
 Bohemia, New York 11716

PHOTOGRAPHIC LOG



Photograph No. 1: View of the subject property looking to the northwest from Hernan Avenue.



Photograph No. 2: Dense vegetation present at the subject property.



Photograph No. 3: Soil sampling activities.



Photograph No. 4: Fill material encountered within soil boring.



Photograph No. 5: Adjoining property to the east.

Appendix A

Laboratory Analysis



NYSDOH 11418
NJDEP NY050
CTDOH PH-0205
PADEP 68-00573

Tuesday, September 06, 2005

Walter Berninger
Berninger Environmental, Inc.
90 Knickerbocker Avenue, Unit B
Bohemia, NY 11716

TEL: (631) 588-6521
FAX (631) 589-6528

RE: Hernan Ave. Oyster Bay, N.Y.

Order No.: 0508228

Dear Walter Berninger:

American Analytical Laboratories, LLC. received 12 sample(s) on 8/26/2005 for the analyses presented in the following report.

Samples were analyzed in accordance with the test procedures documented on the chain of custody and detailed throughout the text of this report.

The limits provided in the data package are analytical reporting limits and not Federal or Local mandated values to which the sample results should be compared.

There were no problems with the analyses and all data for associated QC met laboratory specifications.

If you have any questions regarding these tests results, please do not hesitate to call (631) 454-6100 or email me directly at lbeyer@american-analytical.com.

Sincerely,

Lori Beyer
Lab Director

American Analytical Laboratories, LLC.

Date: 06-Sep-05

CLIENT: Berninger Environmental, Inc.
Project: Hernan Ave. Oyster Bay, N.Y.
Lab Order: 0508228

Work Order Sample Summary

Lab Sample ID	Client Sample ID	Tag Number	Collection Date	Date Received
0508228-01A	B-8 @ 0-3"	7831	8/26/2005	8/26/2005
0508228-02A	B-9 @ 0-3"	7831	8/26/2005	8/26/2005
0508228-03A	B-10 @ 0-3"	7831	8/26/2005	8/26/2005
0508228-04A	B-4 @ 0-3"	7831	8/26/2005	8/26/2005
0508228-05A	B-7 @ 0-3"	7831	8/26/2005	8/26/2005
0508228-06A	B-5 @ 1'-1.5'	7831	8/26/2005	8/26/2005
0508228-07A	B-6 @ 0-3"	7831	8/26/2005	8/26/2005
0508228-08A	B-12 @ 0-3"	7832	8/26/2005	8/26/2005
0508228-09A	B-11 @ 0-3"	7832	8/26/2005	8/26/2005
0508228-10A	B-3 @ 6"-1'	7832	8/26/2005	8/26/2005
0508228-11A	B-1 @ 6"-1'	7832	8/26/2005	8/26/2005
0508228-12A	B-2 @ 0-3"	7832	8/26/2005	8/26/2005

56 TOLEDO STREET • FARMINGDALE, NEW YORK 11735
(631) 454-6100 • FAX (631) 454-8027

AMERICAN ANALYTICAL LABORATORIES, LLC

56 TOLEDO STREET

FARMINGDALE, NEW YORK 11735

TELEPHONE: (631) 454-6100 FAX: (631) 454-8027

DATA REPORTING QUALIFIERS

For reporting results, the following "Results Qualifiers" are used:

Value	If the result is greater than or equal to the detection limit, report the value
U	Indicates the compound was analyzed for but was not detected. Report the minimum detection limit for the sample with the U, i.e. "10U". This is not necessarily the instrument detection limit attainable for this particular sample based on any concentration or dilution that may have been required.
J	Indicates an estimated value. The flag is used: <ol style="list-style-type: none">(1) When estimating a concentration for a tentatively identified compound (library search hits, where a 1:1 response is assumed.)(2) When the mass spectral data indicated the identification, however the result was less than the specified detection limit greater than zero. If the detection limit was 10ug/L and a concentration of 3ug/L was calculated report as 3J. This flag is used when similar situations arise on any organic parameter i.e. Pesticide, PCBs and others.
B	Indicates the analyte was found in the blank as well as the sample report "10B".
E	Indicates the analytes concentration exceeds the calibrated range of the instrument for that specific analysis.
D	This flag identifies all compounds identified in an analysis at a secondary dilution factor.
P	This flag is used for Pesticide / PCB target analyte when there is >25% difference for detected concentrations between the two GC Columns. The higher of the two values is reported on Form I and flagged with a "P".
N	This flag indicates presumptive evidence of a compound. This is only used for tentatively identified compounds (TICs), where the identification is based on a mass spectral library search. It applies to all TIC results. For generic characterization of a TIC, such as chlorinated hydrocarbon, the flag is not used.
H	Indicates sample was received and/or analyzed outside of The method allowable holding time

American Analytical Laboratories, LLC.

Date: 06-Sep-05

CLIENT: Berninger Environmental, Inc. **Client Sample ID:** B-8 @ 0-3"
Lab Order: 0508228 **Tag Number:** 7831
Project: Hernan Ave. Oyster Bay, N.Y. **Collection Date:** 8/26/2005
Lab ID: 0508228-01A **Date Received:** 8/26/2005 **Matrix:** SOIL

Analyses	Result	Limit	Qual	Units	DF	Date Analyzed
MERCURY SW-846 7471		SW7471B				Analyst: JP
Mercury	0.377	0.0116		mg/Kg-dry	1	9/2/2005
PERCENT MOISTURE		D2216				Analyst: PA
Percent Moisture	13.9	0		wt%	1	8/29/2005
METALS-TARGET ANALYTE LIST		SW6010B		(SW3050A)		Analyst: JP
Aluminum	3660	0.461		mg/Kg-dry	1	9/2/2005 10:22:18 AM
Antimony	U	0.576		mg/Kg-dry	1	9/2/2005 10:22:18 AM
Arsenic	3.37	0.576		mg/Kg-dry	1	9/2/2005 10:22:18 AM
Barium	26.0	0.461		mg/Kg-dry	1	9/2/2005 10:22:18 AM
Beryllium	U	0.461		mg/Kg-dry	1	9/2/2005 10:22:18 AM
Cadmium	0.411	0.230		mg/Kg-dry	1	9/2/2005 10:22:18 AM
Calcium	17400	0.576		mg/Kg-dry	1	9/2/2005 10:22:18 AM
Chromium	8.40	0.461		mg/Kg-dry	1	9/2/2005 10:22:18 AM
Cobalt	4.52	0.461		mg/Kg-dry	1	9/2/2005 10:22:18 AM
Copper	302	0.461		mg/Kg-dry	1	9/2/2005 10:22:18 AM
Iron	4550	0.461		mg/Kg-dry	1	9/2/2005 10:22:18 AM
Lead	56.9	0.346		mg/Kg-dry	1	9/2/2005 10:22:18 AM
Magnesium	10700	0.461		mg/Kg-dry	1	9/2/2005 10:22:18 AM
Manganese	125	0.461		mg/Kg-dry	1	9/2/2005 10:22:18 AM
Nickel	5.96	0.461		mg/Kg-dry	1	9/2/2005 10:22:18 AM
Potassium	530	1.38		mg/Kg-dry	1	9/2/2005 10:22:18 AM
Selenium	U	0.576		mg/Kg-dry	1	9/2/2005 10:22:18 AM
Silver	U	0.461		mg/Kg-dry	1	9/2/2005 10:22:18 AM
Sodium	151	0.691		mg/Kg-dry	1	9/2/2005 10:22:18 AM
Thallium	U	0.346		mg/Kg-dry	1	9/2/2005 10:22:18 AM
Vanadium	9.06	0.461		mg/Kg-dry	1	9/2/2005 10:22:18 AM
Zinc	88.2	0.461		mg/Kg-dry	1	9/2/2005 10:22:18 AM

Qualifiers: * Value exceeds Maximum Contaminant Level
 E Value above quantitation range
 J Analyte detected below quantitation limits
 S Spike Recovery outside accepted recovery limits
 B Analyte detected in the associated Method Blank
 H Holding times for preparation or analysis exceeded
 ND Not Detected at the Reporting Limit
 U Indicates the compound was analyzed for but not detected

American Analytical Laboratories, LLC.

Date: 06-Sep-05

CLIENT: Berninger Environmental, Inc. **Client Sample ID:** B-9 @ 0-3"
Lab Order: 0508228 **Tag Number:** 7831
Project: Hernan Ave. Oyster Bay, N.Y. **Collection Date:** 8/26/2005
Lab ID: 0508228-02A **Date Received:** 8/26/2005 **Matrix:** SOIL

Analyses	Result	Limit	Qual	Units	DF	Date Analyzed
MERCURY SW-846 7471		SW7471B				Analyst: JP
Mercury	2.00	0.0119		mg/Kg-dry	1	9/2/2005
PERCENT MOISTURE		D2216				Analyst: PA
Percent Moisture	15.7	0		wt%	1	8/29/2005
METALS-TARGET ANALYTE LIST		SW6010B		(SW3050A)		Analyst: JP
Aluminum	3700	0.431		mg/Kg-dry	1	9/2/2005 10:24:32 AM
Antimony	U	0.539		mg/Kg-dry	1	9/2/2005 10:24:32 AM
Arsenic	5.84	0.539		mg/Kg-dry	1	9/2/2005 10:24:32 AM
Barium	77.6	0.431		mg/Kg-dry	1	9/2/2005 10:24:32 AM
Beryllium	U	0.431		mg/Kg-dry	1	9/2/2005 10:24:32 AM
Cadmium	0.466	0.216		mg/Kg-dry	1	9/2/2005 10:24:32 AM
Calcium	23100	0.539		mg/Kg-dry	1	9/2/2005 10:24:32 AM
Chromium	7.96	0.431		mg/Kg-dry	1	9/2/2005 10:24:32 AM
Cobalt	5.58	0.431		mg/Kg-dry	1	9/2/2005 10:24:32 AM
Copper	130	0.431		mg/Kg-dry	1	9/2/2005 10:24:32 AM
Iron	7370	0.431		mg/Kg-dry	1	9/2/2005 10:24:32 AM
Lead	118	0.324		mg/Kg-dry	1	9/2/2005 10:24:32 AM
Magnesium	12900	0.431		mg/Kg-dry	1	9/2/2005 10:24:32 AM
Manganese	115	0.431		mg/Kg-dry	1	9/2/2005 10:24:32 AM
Nickel	7.36	0.431		mg/Kg-dry	1	9/2/2005 10:24:32 AM
Potassium	594	1.29		mg/Kg-dry	1	9/2/2005 10:24:32 AM
Selenium	U	0.539		mg/Kg-dry	1	9/2/2005 10:24:32 AM
Silver	U	0.431		mg/Kg-dry	1	9/2/2005 10:24:32 AM
Sodium	228	0.647		mg/Kg-dry	1	9/2/2005 10:24:32 AM
Thallium	U	0.324		mg/Kg-dry	1	9/2/2005 10:24:32 AM
Vanadium	13.4	0.431		mg/Kg-dry	1	9/2/2005 10:24:32 AM
Zinc	111	0.431		mg/Kg-dry	1	9/2/2005 10:24:32 AM

Qualifiers: * Value exceeds Maximum Contaminant Level
 E Value above quantitation range
 J Analyte detected below quantitation limits
 S Spike Recovery outside accepted recovery limits
 B Analyte detected in the associated Method Blank
 H Holding times for preparation or analysis exceeded
 ND Not Detected at the Reporting Limit
 U Indicates the compound was analyzed for but not detected

American Analytical Laboratories, LLC.

Date: 06-Sep-05

CLIENT: Berninger Environmental, Inc.**Client Sample ID:** B-10 @ 0-3"**Lab Order:** 0508228**Tag Number:** 7831**Project:** Hernan Ave. Oyster Bay, N.Y.**Collection Date:** 8/26/2005**Lab ID:** 0508228-03A**Date Received:** 8/26/2005**Matrix:** SOIL

Analyses	Result	Limit	Qual	Units	DF	Date Analyzed
MERCURY SW-846 7471		SW7471B				Analyst: JP
Mercury	0.928	0.0124		mg/Kg-dry	1	9/2/2005
PERCENT MOISTURE		D2216				Analyst: PA
Percent Moisture	19.2	0		wt%	1	8/29/2005
METALS-TARGET ANALYTE LIST		SW6010B		(SW3050A)		Analyst: JP
Aluminum	3990	0.484		mg/Kg-dry	1	9/2/2005 10:36:12 AM
Antimony	U	0.604		mg/Kg-dry	1	9/2/2005 10:36:12 AM
Arsenic	8.77	0.604		mg/Kg-dry	1	9/2/2005 10:36:12 AM
Barium	53.7	0.484		mg/Kg-dry	1	9/2/2005 10:36:12 AM
Beryllium	U	0.484		mg/Kg-dry	1	9/2/2005 10:36:12 AM
Cadmium	0.964	0.242		mg/Kg-dry	1	9/2/2005 10:36:12 AM
Calcium	9960	0.604		mg/Kg-dry	1	9/2/2005 10:36:12 AM
Chromium	13.2	0.484		mg/Kg-dry	1	9/2/2005 10:36:12 AM
Cobalt	6.76	0.484		mg/Kg-dry	1	9/2/2005 10:36:12 AM
Copper	382	0.484		mg/Kg-dry	1	9/2/2005 10:36:12 AM
Iron	5980	0.484		mg/Kg-dry	1	9/2/2005 10:36:12 AM
Lead	122	0.363		mg/Kg-dry	1	9/2/2005 10:36:12 AM
Magnesium	6140	0.484		mg/Kg-dry	1	9/2/2005 10:36:12 AM
Manganese	171	0.484		mg/Kg-dry	1	9/2/2005 10:36:12 AM
Nickel	9.33	0.484		mg/Kg-dry	1	9/2/2005 10:36:12 AM
Potassium	509	1.45		mg/Kg-dry	1	9/2/2005 10:36:12 AM
Selenium	U	0.604		mg/Kg-dry	1	9/2/2005 10:36:12 AM
Silver	U	0.484		mg/Kg-dry	1	9/2/2005 10:36:12 AM
Sodium	174	0.725		mg/Kg-dry	1	9/2/2005 10:36:12 AM
Thallium	U	0.363		mg/Kg-dry	1	9/2/2005 10:36:12 AM
Vanadium	11.7	0.484		mg/Kg-dry	1	9/2/2005 10:36:12 AM
Zinc	172	0.484		mg/Kg-dry	1	9/2/2005 10:36:12 AM

Qualifiers:

- * Value exceeds Maximum Contaminant Level
- E Value above quantitation range
- J Analyte detected below quantitation limits
- S Spike Recovery outside accepted recovery limits

- B Analyte detected in the associated Method Blank
- H Holding times for preparation or analysis exceeded
- ND Not Detected at the Reporting Limit
- U Indicates the compound was analyzed for but not detected

American Analytical Laboratories, LLC.

Date: 06-Sep-05

CLIENT: Berninger Environmental, Inc. **Client Sample ID:** B-4 @ 0-3"
Lab Order: 0508228 **Tag Number:** 7831
Project: Hernan Ave. Oyster Bay, N.Y. **Collection Date:** 8/26/2005
Lab ID: 0508228-04A **Date Received:** 8/26/2005 **Matrix:** SOIL

Analyses	Result	Limit	Qual	Units	DF	Date Analyzed
MERCURY SW-846 7471		SW7471B				Analyst: JP
Mercury	0.0196	0.0115		mg/Kg-dry	1	9/2/2005
PERCENT MOISTURE		D2216				Analyst: PA
Percent Moisture	12.8	0		wt%	1	8/29/2005
METALS-TARGET ANALYTE LIST		SW6010B		(SW3050A)		Analyst: JP
Aluminum	2600	0.446		mg/Kg-dry	1	9/2/2005 10:38:50 AM
Antimony	U	0.558		mg/Kg-dry	1	9/2/2005 10:38:50 AM
Arsenic	1.64	0.558		mg/Kg-dry	1	9/2/2005 10:38:50 AM
Barium	10.1	0.446		mg/Kg-dry	1	9/2/2005 10:38:50 AM
Beryllium	U	0.446		mg/Kg-dry	1	9/2/2005 10:38:50 AM
Cadmium	U	0.223		mg/Kg-dry	1	9/2/2005 10:38:50 AM
Calcium	828	0.558		mg/Kg-dry	1	9/2/2005 10:38:50 AM
Chromium	6.81	0.446		mg/Kg-dry	1	9/2/2005 10:38:50 AM
Cobalt	3.86	0.446		mg/Kg-dry	1	9/2/2005 10:38:50 AM
Copper	6.72	0.446		mg/Kg-dry	1	9/2/2005 10:38:50 AM
Iron	5820	0.446		mg/Kg-dry	1	9/2/2005 10:38:50 AM
Lead	9.37	0.335		mg/Kg-dry	1	9/2/2005 10:38:50 AM
Magnesium	706	0.446		mg/Kg-dry	1	9/2/2005 10:38:50 AM
Manganese	83.1	0.446		mg/Kg-dry	1	9/2/2005 10:38:50 AM
Nickel	4.72	0.446		mg/Kg-dry	1	9/2/2005 10:38:50 AM
Potassium	292	1.34		mg/Kg-dry	1	9/2/2005 10:38:50 AM
Selenium	U	0.558		mg/Kg-dry	1	9/2/2005 10:38:50 AM
Silver	U	0.446		mg/Kg-dry	1	9/2/2005 10:38:50 AM
Sodium	80.2	0.669		mg/Kg-dry	1	9/2/2005 10:38:50 AM
Thallium	U	0.335		mg/Kg-dry	1	9/2/2005 10:38:50 AM
Vanadium	7.60	0.446		mg/Kg-dry	1	9/2/2005 10:38:50 AM
Zinc	15.7	0.446		mg/Kg-dry	1	9/2/2005 10:38:50 AM

Qualifiers: * Value exceeds Maximum Contaminant Level
 E Value above quantitation range
 J Analyte detected below quantitation limits
 S Spike Recovery outside accepted recovery limits
 B Analyte detected in the associated Method Blank
 H Holding times for preparation or analysis exceeded
 ND Not Detected at the Reporting Limit
 U Indicates the compound was analyzed for but not detected

American Analytical Laboratories, LLC.

Date: 06-Sep-05

CLIENT: Berninger Environmental, Inc. **Client Sample ID:** B-7 @ 0-3"
Lab Order: 0508228 **Tag Number:** 7831
Project: Hernan Ave. Oyster Bay, N.Y. **Collection Date:** 8/26/2005
Lab ID: 0508228-05A **Date Received:** 8/26/2005 **Matrix:** SOIL

Analyses	Result	Limit	Qual	Units	DF	Date Analyzed
----------	--------	-------	------	-------	----	---------------

MERCURY SW-846 7471		SW7471B				Analyst: JP
Mercury	0.125	0.0117		mg/Kg-dry	1	9/2/2005

PERCENT MOISTURE		D2216				Analyst: PA
Percent Moisture	14.4	0		wt%	1	8/29/2005

METALS-TARGET ANALYTE LIST		SW6010B	(SW3050A)		Analyst: JP
Aluminum	3360	0.420	mg/Kg-dry	1	9/2/2005 10:41:04 AM
Antimony	U	0.525	mg/Kg-dry	1	9/2/2005 10:41:04 AM
Arsenic	2.22	0.525	mg/Kg-dry	1	9/2/2005 10:41:04 AM
Barium	20.1	0.420	mg/Kg-dry	1	9/2/2005 10:41:04 AM
Beryllium	U	0.420	mg/Kg-dry	1	9/2/2005 10:41:04 AM
Cadmium	U	0.210	mg/Kg-dry	1	9/2/2005 10:41:04 AM
Calcium	40200	0.525	mg/Kg-dry	1	9/2/2005 10:41:04 AM
Chromium	6.74	0.420	mg/Kg-dry	1	9/2/2005 10:41:04 AM
Cobalt	4.27	0.420	mg/Kg-dry	1	9/2/2005 10:41:04 AM
Copper	269	0.420	mg/Kg-dry	1	9/2/2005 10:41:04 AM
Iron	6810	0.420	mg/Kg-dry	1	9/2/2005 10:41:04 AM
Lead	34.7	0.315	mg/Kg-dry	1	9/2/2005 10:41:04 AM
Magnesium	23500	0.420	mg/Kg-dry	1	9/2/2005 10:41:04 AM
Manganese	149	0.420	mg/Kg-dry	1	9/2/2005 10:41:04 AM
Nickel	6.31	0.420	mg/Kg-dry	1	9/2/2005 10:41:04 AM
Potassium	517	1.26	mg/Kg-dry	1	9/2/2005 10:41:04 AM
Selenium	U	0.525	mg/Kg-dry	1	9/2/2005 10:41:04 AM
Silver	U	0.420	mg/Kg-dry	1	9/2/2005 10:41:04 AM
Sodium	189	0.630	mg/Kg-dry	1	9/2/2005 10:41:04 AM
Thallium	0.348	0.315	mg/Kg-dry	1	9/2/2005 10:41:04 AM
Vanadium	8.31	0.420	mg/Kg-dry	1	9/2/2005 10:41:04 AM
Zinc	52.3	0.420	mg/Kg-dry	1	9/2/2005 10:41:04 AM

Qualifiers: * Value exceeds Maximum Contaminant Level
 E Value above quantitation range
 J Analyte detected below quantitation limits
 S Spike Recovery outside accepted recovery limits

B Analyte detected in the associated Method Blank
 H Holding times for preparation or analysis exceeded
 ND Not Detected at the Reporting Limit
 U Indicates the compound was analyzed for but not detected

American Analytical Laboratories, LLC.

Date: 06-Sep-05

CLIENT: Berninger Environmental, Inc. Client Sample ID: B-5 @ 1'-1.5'
 Lab Order: 0508228 Tag Number: 7831
 Project: Hernan Ave. Oyster Bay, N.Y. Collection Date: 8/26/2005
 Lab ID: 0508228-06A Date Received: 8/26/2005 Matrix: SOIL

Analyses	Result	Limit	Qual	Units	DF	Date Analyzed
MERCURY SW-846 7471		SW7471B				Analyst: JP
Mercury	0.175	0.0129		mg/Kg-dry	1	9/2/2005
PERCENT MOISTURE		D2216				Analyst: PA
Percent Moisture	22.3	0		wt%	1	8/29/2005
METALS-TARGET ANALYTE LIST		SW6010B	(SW3050A)			Analyst: JP
Aluminum	2210	0.493		mg/Kg-dry	1	9/2/2005 10:44:39 AM
Antimony	U	0.616		mg/Kg-dry	1	9/2/2005 10:44:39 AM
Arsenic	4.10	0.616		mg/Kg-dry	1	9/2/2005 10:44:39 AM
Barium	110	0.493		mg/Kg-dry	1	9/2/2005 10:44:39 AM
Beryllium	U	0.493		mg/Kg-dry	1	9/2/2005 10:44:39 AM
Cadmium	0.694	0.246		mg/Kg-dry	1	9/2/2005 10:44:39 AM
Calcium	21400	0.616		mg/Kg-dry	1	9/2/2005 10:44:39 AM
Chromium	5.58	0.493		mg/Kg-dry	1	9/2/2005 10:44:39 AM
Cobalt	6.98	0.493		mg/Kg-dry	1	9/2/2005 10:44:39 AM
Copper	221	0.493		mg/Kg-dry	1	9/2/2005 10:44:39 AM
Iron	14700	0.493		mg/Kg-dry	1	9/2/2005 10:44:39 AM
Lead	647	0.370		mg/Kg-dry	1	9/2/2005 10:44:39 AM
Magnesium	1930	0.493		mg/Kg-dry	1	9/2/2005 10:44:39 AM
Manganese	448	0.493		mg/Kg-dry	1	9/2/2005 10:44:39 AM
Nickel	5.71	0.493		mg/Kg-dry	1	9/2/2005 10:44:39 AM
Potassium	281	1.48		mg/Kg-dry	1	9/2/2005 10:44:39 AM
Selenium	U	0.616		mg/Kg-dry	1	9/2/2005 10:44:39 AM
Silver	U	0.493		mg/Kg-dry	1	9/2/2005 10:44:39 AM
Sodium	123	0.739		mg/Kg-dry	1	9/2/2005 10:44:39 AM
Thallium	U	0.370		mg/Kg-dry	1	9/2/2005 10:44:39 AM
Vanadium	6.37	0.493		mg/Kg-dry	1	9/2/2005 10:44:39 AM
Zinc	344	0.493		mg/Kg-dry	1	9/2/2005 10:44:39 AM

Qualifiers: * Value exceeds Maximum Contaminant Level B Analyte detected in the associated Method Blank
 E Value above quantitation range H Holding times for preparation or analysis exceeded
 J Analyte detected below quantitation limits ND Not Detected at the Reporting Limit
 S Spike Recovery outside accepted recovery limits U Indicates the compound was analyzed for but not detected

American Analytical Laboratories, LLC.

Date: 06-Sep-05

CLIENT: Berninger Environmental, Inc. **Client Sample ID:** B-6 @ 0-3"
Lab Order: 0508228 **Tag Number:** 7831
Project: Hernan Ave. Oyster Bay, N.Y. **Collection Date:** 8/26/2005
Lab ID: 0508228-07A **Date Received:** 8/26/2005 **Matrix:** SOIL

Analyses	Result	Limit	Qual	Units	DF	Date Analyzed
MERCURY SW-846 7471		SW7471B				Analyst: JP
Mercury	0.0933	0.0150		mg/Kg-dry	1	9/2/2005
PERCENT MOISTURE		D2216				Analyst: PA
Percent Moisture	33.1	0		wt%	1	8/29/2005
METALS-TARGET ANALYTE LIST		SW6010B		(SW3050A)		Analyst: JP
Aluminum	2540	0.580		mg/Kg-dry	1	9/2/2005 10:47:14 AM
Antimony	U	0.725		mg/Kg-dry	1	9/2/2005 10:47:14 AM
Arsenic	7.12	0.725		mg/Kg-dry	1	9/2/2005 10:47:14 AM
Barium	119	0.580		mg/Kg-dry	1	9/2/2005 10:47:14 AM
Beryllium	U	0.580		mg/Kg-dry	1	9/2/2005 10:47:14 AM
Cadmium	1.93	0.290		mg/Kg-dry	1	9/2/2005 10:47:14 AM
Calcium	2490	0.725		mg/Kg-dry	1	9/2/2005 10:47:14 AM
Chromium	8.90	0.580		mg/Kg-dry	1	9/2/2005 10:47:14 AM
Cobalt	19.3	0.580		mg/Kg-dry	1	9/2/2005 10:47:14 AM
Copper	106	0.580		mg/Kg-dry	1	9/2/2005 10:47:14 AM
Iron	38300	0.580		mg/Kg-dry	1	9/2/2005 10:47:14 AM
Lead	116	0.435		mg/Kg-dry	1	9/2/2005 10:47:14 AM
Magnesium	332	0.580		mg/Kg-dry	1	9/2/2005 10:47:14 AM
Manganese	190	0.580		mg/Kg-dry	1	9/2/2005 10:47:14 AM
Nickel	14.7	0.580		mg/Kg-dry	1	9/2/2005 10:47:14 AM
Potassium	302	1.74		mg/Kg-dry	1	9/2/2005 10:47:14 AM
Selenium	U	0.725		mg/Kg-dry	1	9/2/2005 10:47:14 AM
Silver	U	0.580		mg/Kg-dry	1	9/2/2005 10:47:14 AM
Sodium	220	0.869		mg/Kg-dry	1	9/2/2005 10:47:14 AM
Thallium	U	0.435		mg/Kg-dry	1	9/2/2005 10:47:14 AM
Vanadium	19.1	0.580		mg/Kg-dry	1	9/2/2005 10:47:14 AM
Zinc	441	0.580		mg/Kg-dry	1	9/2/2005 10:47:14 AM

Qualifiers:
 * Value exceeds Maximum Contaminant Level
 E Value above quantitation range
 J Analyte detected below quantitation limits
 S Spike Recovery outside accepted recovery limits

B Analyte detected in the associated Method Blank
 H Holding times for preparation or analysis exceeded
 ND Not Detected at the Reporting Limit
 U Indicates the compound was analyzed for but not detected

American Analytical Laboratories, LLC.

Date: 06-Sep-05

CLIENT: Berninger Environmental, Inc. **Client Sample ID:** B-12 @ 0-3"
Lab Order: 0508228 **Tag Number:** 7832
Project: Hernan Ave. Oyster Bay, N.Y. **Collection Date:** 8/26/2005
Lab ID: 0508228-08A **Date Received:** 8/26/2005 **Matrix:** SOIL

Analyses	Result	Limit	Qual	Units	DF	Date Analyzed
MERCURY SW-846 7471		SW7471B				Analyst: JP
Mercury	14.1	0.0118		mg/Kg-dry	1	9/2/2005
PERCENT MOISTURE		D2216				Analyst: PA
Percent Moisture	15.0	0		wt%	1	8/29/2005
METALS-TARGET ANALYTE LIST		SW6010B	(SW3050A)			Analyst: JP
Aluminum	4710	0.467		mg/Kg-dry	1	9/2/2005 10:49:39 AM
Antimony	0.811	0.583		mg/Kg-dry	1	9/2/2005 10:49:39 AM
Arsenic	12.1	0.583		mg/Kg-dry	1	9/2/2005 10:49:39 AM
Barium	131	0.467		mg/Kg-dry	1	9/2/2005 10:49:39 AM
Beryllium	U	0.467		mg/Kg-dry	1	9/2/2005 10:49:39 AM
Cadmium	0.480	0.233		mg/Kg-dry	1	9/2/2005 10:49:39 AM
Calcium	868	0.583		mg/Kg-dry	1	9/2/2005 10:49:39 AM
Chromium	12.4	0.467		mg/Kg-dry	1	9/2/2005 10:49:39 AM
Cobalt	6.66	0.467		mg/Kg-dry	1	9/2/2005 10:49:39 AM
Copper	253	0.467		mg/Kg-dry	1	9/2/2005 10:49:39 AM
Iron	10000	0.467		mg/Kg-dry	1	9/2/2005 10:49:39 AM
Lead	297	0.350		mg/Kg-dry	1	9/2/2005 10:49:39 AM
Magnesium	1440	0.467		mg/Kg-dry	1	9/2/2005 10:49:39 AM
Manganese	123	0.467		mg/Kg-dry	1	9/2/2005 10:49:39 AM
Nickel	7.57	0.467		mg/Kg-dry	1	9/2/2005 10:49:39 AM
Potassium	589	1.40		mg/Kg-dry	1	9/2/2005 10:49:39 AM
Selenium	U	0.583		mg/Kg-dry	1	9/2/2005 10:49:39 AM
Silver	U	0.467		mg/Kg-dry	1	9/2/2005 10:49:39 AM
Sodium	921	0.700		mg/Kg-dry	1	9/2/2005 10:49:39 AM
Thallium	U	0.350		mg/Kg-dry	1	9/2/2005 10:49:39 AM
Vanadium	11.0	0.467		mg/Kg-dry	1	9/2/2005 10:49:39 AM
Zinc	328	0.467		mg/Kg-dry	1	9/2/2005 10:49:39 AM

Qualifiers: * Value exceeds Maximum Contaminant Level
 E Value above quantitation range
 J Analyte detected below quantitation limits
 S Spike Recovery outside accepted recovery limits
 B Analyte detected in the associated Method Blank
 H Holding times for preparation or analysis exceeded
 ND Not Detected at the Reporting Limit
 U Indicates the compound was analyzed for but not detected

American Analytical Laboratories, LLC.

Date: 06-Sep-05

CLIENT: Berninger Environmental, Inc. **Client Sample ID:** B-11 @ 0-3"
Lab Order: 0508228 **Tag Number:** 7832
Project: Hernan Ave. Oyster Bay, N.Y. **Collection Date:** 8/26/2005
Lab ID: 0508228-09A **Date Received:** 8/26/2005 **Matrix:** SOIL

Analyses	Result	Limit	Qual	Units	DF	Date Analyzed
MERCURY SW-846 7471		SW7471B				Analyst: JP
Mercury	19.0	0.0139		mg/Kg-dry	1	9/2/2005
PERCENT MOISTURE		D2216				Analyst: PA
Percent Moisture	28.2	0		wt%	1	8/29/2005
METALS-TARGET ANALYTE LIST		SW6010B		(SW3050A)		Analyst: JP
Aluminum	3840	0.521		mg/Kg-dry	1	9/2/2005 10:52:41 AM
Antimony	5.93	0.652		mg/Kg-dry	1	9/2/2005 10:52:41 AM
Arsenic	35.2	0.652		mg/Kg-dry	1	9/2/2005 10:52:41 AM
Barium	159	0.521		mg/Kg-dry	1	9/2/2005 10:52:41 AM
Beryllium	U	0.521		mg/Kg-dry	1	9/2/2005 10:52:41 AM
Cadmium	2.19	0.261		mg/Kg-dry	1	9/2/2005 10:52:41 AM
Calcium	2990	0.652		mg/Kg-dry	1	9/2/2005 10:52:41 AM
Chromium	17.1	0.521		mg/Kg-dry	1	9/2/2005 10:52:41 AM
Cobalt	9.72	0.521		mg/Kg-dry	1	9/2/2005 10:52:41 AM
Copper	436	0.521		mg/Kg-dry	1	9/2/2005 10:52:41 AM
Iron	18000	0.521		mg/Kg-dry	1	9/2/2005 10:52:41 AM
Lead	415	0.391		mg/Kg-dry	1	9/2/2005 10:52:41 AM
Magnesium	2070	0.521		mg/Kg-dry	1	9/2/2005 10:52:41 AM
Manganese	102	0.521		mg/Kg-dry	1	9/2/2005 10:52:41 AM
Nickel	18.0	0.521		mg/Kg-dry	1	9/2/2005 10:52:41 AM
Potassium	580	1.56		mg/Kg-dry	1	9/2/2005 10:52:41 AM
Selenium	U	0.652		mg/Kg-dry	1	9/2/2005 10:52:41 AM
Silver	U	0.521		mg/Kg-dry	1	9/2/2005 10:52:41 AM
Sodium	937	0.782		mg/Kg-dry	1	9/2/2005 10:52:41 AM
Thallium	U	0.391		mg/Kg-dry	1	9/2/2005 10:52:41 AM
Vanadium	15.4	0.521		mg/Kg-dry	1	9/2/2005 10:52:41 AM
Zinc	571	0.521		mg/Kg-dry	1	9/2/2005 10:52:41 AM

Qualifiers: * Value exceeds Maximum Contaminant Level
 E Value above quantitation range
 J Analyte detected below quantitation limits
 S Spike Recovery outside accepted recovery limits
 B Analyte detected in the associated Method Blank
 H Holding times for preparation or analysis exceeded
 ND Not Detected at the Reporting Limit
 U Indicates the compound was analyzed for but not detected

American Analytical Laboratories, LLC.

Date: 06-Sep-05

CLIENT: Berninger Environmental, Inc. Client Sample ID: B-3 @ 6"-1'
 Lab Order: 0508228 Tag Number: 7832
 Project: Hernan Ave. Oyster Bay, N.Y. Collection Date: 8/26/2005
 Lab ID: 0508228-10A Date Received: 8/26/2005 Matrix: SOIL

Analyses	Result	Limit	Qual	Units	DF	Date Analyzed
MERCURY SW-846 7471		SW7471B				Analyst: JP
Mercury	9.46	0.0125		mg/Kg-dry	1	9/2/2005
PERCENT MOISTURE		D2216				Analyst: PA
Percent Moisture	20.1	0		wt%	1	8/29/2005
METALS-TARGET ANALYTE LIST		SW6010B		(SW3050A)		Analyst: JP
Aluminum	5280	0.474		mg/Kg-dry	1	9/2/2005 10:54:52 AM
Antimony	U	0.592		mg/Kg-dry	1	9/2/2005 10:54:52 AM
Arsenic	13.7	0.592		mg/Kg-dry	1	9/2/2005 10:54:52 AM
Barium	92.3	0.474		mg/Kg-dry	1	9/2/2005 10:54:52 AM
Beryllium	U	0.474		mg/Kg-dry	1	9/2/2005 10:54:52 AM
Cadmium	0.769	0.237		mg/Kg-dry	1	9/2/2005 10:54:52 AM
Calcium	1970	0.592		mg/Kg-dry	1	9/2/2005 10:54:52 AM
Chromium	14.9	0.474		mg/Kg-dry	1	9/2/2005 10:54:52 AM
Cobalt	11.5	0.474		mg/Kg-dry	1	9/2/2005 10:54:52 AM
Copper	158	0.474		mg/Kg-dry	1	9/2/2005 10:54:52 AM
Iron	20400	0.474		mg/Kg-dry	1	9/2/2005 10:54:52 AM
Lead	192	0.355		mg/Kg-dry	1	9/2/2005 10:54:52 AM
Magnesium	752	0.474		mg/Kg-dry	1	9/2/2005 10:54:52 AM
Manganese	186	0.474		mg/Kg-dry	1	9/2/2005 10:54:52 AM
Nickel	11.9	0.474		mg/Kg-dry	1	9/2/2005 10:54:52 AM
Potassium	538	1.42		mg/Kg-dry	1	9/2/2005 10:54:52 AM
Selenium	0.908	0.592		mg/Kg-dry	1	9/2/2005 10:54:52 AM
Silver	U	0.474		mg/Kg-dry	1	9/2/2005 10:54:52 AM
Sodium	180	0.711		mg/Kg-dry	1	9/2/2005 10:54:52 AM
Thallium	U	0.355		mg/Kg-dry	1	9/2/2005 10:54:52 AM
Vanadium	25.9	0.474		mg/Kg-dry	1	9/2/2005 10:54:52 AM
Zinc	256	0.474		mg/Kg-dry	1	9/2/2005 10:54:52 AM

Qualifiers: * Value exceeds Maximum Contaminant Level B Analyte detected in the associated Method Blank
 E Value above quantitation range H Holding times for preparation or analysis exceeded
 J Analyte detected below quantitation limits ND Not Detected at the Reporting Limit
 S Spike Recovery outside accepted recovery limits U Indicates the compound was analyzed for but not detected

American Analytical Laboratories, LLC.

Date: 06-Sep-05

CLIENT: Berninger Environmental, Inc. Client Sample ID: B-1 @ 6"-1'
 Lab Order: 0508228 Tag Number: 7832
 Project: Hernan Ave. Oyster Bay, N.Y. Collection Date: 8/26/2005
 Lab ID: 0508228-11A Date Received: 8/26/2005 Matrix: SOIL

Analyses	Result	Limit	Qual	Units	DF	Date Analyzed
MERCURY SW-846 7471		SW7471B				Analyst: JP
Mercury	1.35	0.0126		mg/Kg-dry	1	9/2/2005
PERCENT MOISTURE		D2216				Analyst: PA
Percent Moisture	20.9	0		wt%	1	8/29/2005
METALS-TARGET ANALYTE LIST		SW6010B		(SW3050A)		Analyst: JP
Aluminum	5620	0.477		mg/Kg-dry	1	9/2/2005 10:57:03 AM
Antimony	U	0.596		mg/Kg-dry	1	9/2/2005 10:57:03 AM
Arsenic	11.1	0.596		mg/Kg-dry	1	9/2/2005 10:57:03 AM
Barium	145	0.477		mg/Kg-dry	1	9/2/2005 10:57:03 AM
Beryllium	U	0.477		mg/Kg-dry	1	9/2/2005 10:57:03 AM
Cadmium	2.23	0.238		mg/Kg-dry	1	9/2/2005 10:57:03 AM
Calcium	2410	0.596		mg/Kg-dry	1	9/2/2005 10:57:03 AM
Chromium	12.0	0.477		mg/Kg-dry	1	9/2/2005 10:57:03 AM
Cobalt	10.7	0.477		mg/Kg-dry	1	9/2/2005 10:57:03 AM
Copper	178	0.477		mg/Kg-dry	1	9/2/2005 10:57:03 AM
Iron	15000	0.477		mg/Kg-dry	1	9/2/2005 10:57:03 AM
Lead	405	0.358		mg/Kg-dry	1	9/2/2005 10:57:03 AM
Magnesium	679	0.477		mg/Kg-dry	1	9/2/2005 10:57:03 AM
Manganese	175	0.477		mg/Kg-dry	1	9/2/2005 10:57:03 AM
Nickel	16.6	0.477		mg/Kg-dry	1	9/2/2005 10:57:03 AM
Potassium	563	1.43		mg/Kg-dry	1	9/2/2005 10:57:03 AM
Selenium	U	0.596		mg/Kg-dry	1	9/2/2005 10:57:03 AM
Silver	0.232	0.477	J	mg/Kg-dry	1	9/2/2005 10:57:03 AM
Sodium	201	0.715		mg/Kg-dry	1	9/2/2005 10:57:03 AM
Thallium	U	0.358		mg/Kg-dry	1	9/2/2005 10:57:03 AM
Vanadium	20.3	0.477		mg/Kg-dry	1	9/2/2005 10:57:03 AM
Zinc	501	0.477		mg/Kg-dry	1	9/2/2005 10:57:03 AM

Qualifiers: * Value exceeds Maximum Contaminant Level
 E Value above quantitation range
 J Analyte detected below quantitation limits
 S Spike Recovery outside accepted recovery limits
 B Analyte detected in the associated Method Blank
 H Holding times for preparation or analysis exceeded
 ND Not Detected at the Reporting Limit
 U Indicates the compound was analyzed for but not detected

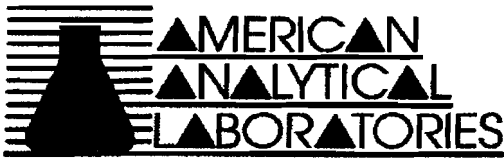
American Analytical Laboratories, LLC.

Date: 06-Sep-05

CLIENT: Berninger Environmental, Inc. Client Sample ID: B-2 @ 0-3"
 Lab Order: 0508228 Tag Number: 7832
 Project: Hernan Ave. Oyster Bay, N.Y. Collection Date: 8/26/2005
 Lab ID: 0508228-12A Date Received: 8/26/2005 Matrix: SOIL

Analyses	Result	Limit	Qual	Units	DF	Date Analyzed
MERCURY SW-846 7471		SW7471B				Analyst: JP
Mercury	0.0591	0.0118		mg/Kg-dry	1	9/2/2005
PERCENT MOISTURE		D2216				Analyst: PA
Percent Moisture	15.4	0		wt%	1	8/29/2005
METALS-TARGET ANALYTE LIST		SW6010B	(SW3050A)			Analyst: JP
Aluminum	9250	0.421		mg/Kg-dry	1	9/2/2005 11:00:40 AM
Antimony	U	0.526		mg/Kg-dry	1	9/2/2005 11:00:40 AM
Arsenic	4.10	0.526		mg/Kg-dry	1	9/2/2005 11:00:40 AM
Barium	53.6	0.421		mg/Kg-dry	1	9/2/2005 11:00:40 AM
Beryllium	U	0.421		mg/Kg-dry	1	9/2/2005 11:00:40 AM
Cadmium	U	0.210		mg/Kg-dry	1	9/2/2005 11:00:40 AM
Calcium	1270	0.526		mg/Kg-dry	1	9/2/2005 11:00:40 AM
Chromium	21.6	0.421		mg/Kg-dry	1	9/2/2005 11:00:40 AM
Cobalt	12.3	0.421		mg/Kg-dry	1	9/2/2005 11:00:40 AM
Copper	15.5	0.421		mg/Kg-dry	1	9/2/2005 11:00:40 AM
Iron	14600	0.421		mg/Kg-dry	1	9/2/2005 11:00:40 AM
Lead	29.8	0.315		mg/Kg-dry	1	9/2/2005 11:00:40 AM
Magnesium	2450	0.421		mg/Kg-dry	1	9/2/2005 11:00:40 AM
Manganese	449	0.421		mg/Kg-dry	1	9/2/2005 11:00:40 AM
Nickel	14.2	0.421		mg/Kg-dry	1	9/2/2005 11:00:40 AM
Potassium	1310	1.26		mg/Kg-dry	1	9/2/2005 11:00:40 AM
Selenium	U	0.526		mg/Kg-dry	1	9/2/2005 11:00:40 AM
Silver	U	0.421		mg/Kg-dry	1	9/2/2005 11:00:40 AM
Sodium	86.0	0.631		mg/Kg-dry	1	9/2/2005 11:00:40 AM
Thallium	U	0.315		mg/Kg-dry	1	9/2/2005 11:00:40 AM
Vanadium	22.8	0.421		mg/Kg-dry	1	9/2/2005 11:00:40 AM
Zinc	48.2	0.421		mg/Kg-dry	1	9/2/2005 11:00:40 AM

Qualifiers: * Value exceeds Maximum Contaminant Level B Analyte detected in the associated Method Blank
 E Value above quantitation range H Holding times for preparation or analysis exceeded
 J Analyte detected below quantitation limits ND Not Detected at the Reporting Limit
 S Spike Recovery outside accepted recovery limits U Indicates the compound was analyzed for but not detected



NYSDOH 11418
NJDEP NY050
CTDOH PH-0205
PADEP 68-00573

Friday, September 16, 2005

Walter Berninger
Berninger Environmental, Inc.
90 Knickerbocker Avenue, Unit B
Bohemia, NY 11716

TEL: (631) 588-6521
FAX (631) 589-6528

RE: Hernan Ave. Oyster Bay, N.Y.

Order No.: 0509045

Dear Walter Berninger:

American Analytical Laboratories, LLC. received 8 sample(s) on 9/7/2005 for the analyses presented in the following report.

Samples were analyzed in accordance with the test procedures documented on the chain of custody and detailed throughout the text of this report.

The limits provided in the data package are analytical reporting limits and not Federal or Local mandated values to which the sample results should be compared.

There were no problems with the analyses and all data for associated QC met laboratory specifications.

If you have any questions regarding these tests results, please do not hesitate to call (631) 454-6100 or email me directly at lbeyer@american-analytical.com.

Sincerely,

Lori Beyer
Lab Director

American Analytical Laboratories, LLC.

Date: 16-Sep-05

CLIENT: Berninger Environmental, Inc.
Project: Hernan Ave. Oyster Bay, N.Y.
Lab Order: 0509045

Work Order Sample Summary

Lab Sample ID	Client Sample ID	Tag Number	Collection Date	Date Received
0509045-01A	B-8 @ 1'-1' 3"	7831	8/26/2005	9/7/2005
0509045-02A	B-9 @ 1'-1' 3"	7831	8/26/2005	9/7/2005
0509045-03A	B-10 @ 1'-1' 3"	7831	8/26/2005	9/7/2005
0509045-04A	B-7 @ 1'-1' 3"	7831	8/26/2005	9/7/2005
0509045-05A	B-12 @ 1'-1' .25"	7832	8/26/2005	9/7/2005
0509045-06A	B-11 @ 1'-1' .25"	7832	8/26/2005	9/7/2005
0509045-07A	B-3 @ 2'- 2' .5"	7832	8/26/2005	9/7/2005
0509045-08A	B-1 @ 2'- 2' .5"	7832	8/26/2005	9/7/2005



NYSDOH	11418
CTDOH	PH-0205
NJDEP	NY050
PADEP	68-573

CLIENT NAME/ADDRESS					CONTACT:		SAMPLER (SIGNATURE)		SAMPLE(S) SEALED		YES / NO	
PROJECT LOCATION:					ANALYSIS REQUIRED		SAMPLER NAME (PRINT)		CORRECT CONTAINER(S)		YES / NO	
LABORATORY ID #	MATRIX	# CONTAINERS	SAMPLING DATE/ TIME	SAMPLE # - LOCATION	FOR METHANOL PRESERVED SAMPLES (VOLATILE VIAL #)							
08228-1A	S	1-2oz	8/24/05	B-8 @ 0-3"	X							
0509045-01A	S	1-2oz	8/24/05	*B-8 @ 1'-1'3"	X							
2A	S	1-2oz	8/24/05	B-9 @ 0-3"	X							
0509045-02A	S	1-2oz	8/24/05	*B-9 @ 1'-1'3"	X							
3A	S	1-2oz	8/24/05	B-10 @ 0-3"	X							
0509045-03A	S	1-2oz	8/24/05	*B-10 @ 1'-1'3"	X							
4A	S	1-2oz	8/24/05	B-4 @ 0-3"	X							
	S	1-2oz	8/24/05	*B-4 @ 1'-1'3"	X							
5A	S	1-2oz	8/24/05	B-7 @ 0-3"	X							
0509045-04A	S	1-2oz	8/24/05	*B-7 @ 1'-1'3"	X							
6A	S	1-2oz	8/24/05	B-5 @ 1'-1'3"	X							
7A	S	1-2oz	8/24/05	B-6 @ 0-3"	X							

* HOLD Deeper samples pending Analysis of shallow sample

MATRIX S=SOIL; L=LIQUID; SL=SLUDGE; A-AIR; W=WIPE; P=PAINT CHIPS; B=BULK MATERIAL
TYPE G=GRAB; C=COMPOSITE, SS=SPLIT SPOON

TURNAROUND REQUIRED:
 NORMAL ☒ STAT ☐ BY 1 1

COOLER TEMPERATURE:
 COMMENTS / INSTRUCTIONS: PO# 5081478

RELINQUISHED BY (SIGNATURE)
Butch Meyer

DATE 8/26/05
TIME 2:13

PRINTED NAME
 BUTCH MEYER

RELINQUISHED BY (SIGNATURE)
[Signature]

DATE
TIME

PRINTED NAME

RECEIVED BY LAB (SIGNATURE)
P. Masi

DATE 8/26
TIME 2:13pm

PRINTED NAME
 P. Masi

RECEIVED BY LAB (SIGNATURE)
DATE
TIME

PRINTED NAME

WHITE-OFFICE / CANARY-LAB / PINK-SAMPLE CUSTODIAN / GOLDENROD-CLIENT



56 TOLEDO STREET • FARMINGDALE, NEW YORK 11735
(631) 454-8100 • FAX (631) 454-8027

NYSDOH 11418
CTDOH PH-0205
NJDEP NY050
PADEP 68-573

TAG # / COC 7832

CHAIN OF CUSTODY / REQUEST FOR ANALYSIS DOCUMENT

CLIENT NAME/ADDRESS				CONTACT:		SAMPLER (SIGNATURE)		SAMPLER(S) SEALED		YES / NO	
BERINGER Environmental, Inc 90 Kicker Back-Ave BOHEMIA, NY				WALTER B. BULLS		<i>Burt Meyer</i>					
PROJECT LOCATION:						SAMPLER NAME (PRINT)		CORRECT CONTAINER(S)		YES / NO	
Hecman Ave,						BOTH MEYER					
ANALYSIS REQUIRED				TAL MEYER						FOR METHANOL PRESERVED SAMPLES (VOLATILE VAL #)	
LABORATORY ID #	MATRIX	# CONTAINERS	SAMPLING DATE/TIME	SAMPLE # - LOCATION							
0509045-8A	S	1-202	8/24/05	B-12 @ 0-3"		X					
0509045-05	S	1-202	8/24/05	B-12 @ 1'-1 1/4'		X					
0509045-06A	S	1-202	8/24/05	B-11 @ 0-3"		X					
0509045-06A	S	1-202	8/24/05	B-11 @ 1'-1 1/4'		X					
0509045-07A	S	1-202	8/24/05	B-3 @ 6"-1'		X					
0509045-07A	S	1-202	8/24/05	B-3 @ 2-2 1/2'		X					
0509045-08A	S	1-202	8/24/05	B-1 @ 6"-1'		X					
0509045-08A	S	1-202	8/24/05	B-1 @ 2-2 1/2'		X					
0509045-08A	S	1-202	8/24/05	B-2 @ 0-3"		X					
0509045-08A	S	1-202	8/24/05	B-2 @ 1'-1 1/4'		X					
④ Hold deeper samples pending analysis of shallow samples											
MATRIX S=SOIL; L=LIQUID; A=AIR; W=WIPE; P=PAINT CHIPS; B=BULK MATERIAL				TURNAROUND REQUIRED:		COOLER TEMPERATURE:		COMMENTS / INSTRUCTIONS			
TYPE G=GRAB; C=COMPOSITE; SS=SPLIT SPOON				NORMAL							
RELINQUISHED BY (SIGNATURE)		DATE		PRINTED NAME		RECEIVED BY LAB (SIGNATURE)		DATE		PRINTED NAME	
<i>Burt Meyer</i>		8/24/05		BUT MEYER		P. MARI		8/26		P. MARI	
RELINQUISHED BY (SIGNATURE)		DATE		PRINTED NAME		RECEIVED BY LAB (SIGNATURE)		DATE		PRINTED NAME	
		2/13						2:13pm			

WHITE-OFFICE / CANARY-LAB / PINK-SAMPLE CUSTODIAN / GOLDENROD-CLIENT

Additional Analysis Required
Hernan Avenue, Lattingtown, NY
American Lab Order 0508228

Metal Analysis	B-1	B-3	B-7	B-8	B-9	B-10	B-11	B-12
	2 to 2.5 ft.	2 to 2.5 ft.	1 to 1.25 ft.	1 to 1.25 ft.	1 to 1.25 ft.	1 to 1.25 ft.	1 to 1.25 ft.	1 to 1.25 ft.
Arsenic		X					X	X
Calcium			X					
Copper	X	X	X	X	X	X	X	X
Lead	X	X	X		X	X	X	X
Magnesium			X	X	X	X		
Zinc	X	X	X	X	X	X	X	X
Mercury	X	X	X	X	X	X	X	X

American Analytical Laboratories, LLC.

Date: 16-Sep-05

CLIENT:	Berninger Environmental, Inc.	Client Sample ID:	B-8 @ 1'-1' 3"
Lab Order:	0509045	Tag Number:	7831
Project:	Hernan Ave. Oyster Bay, N.Y.	Collection Date:	8/26/2005
Lab ID:	0509045-01A	Date Received:	9/7/2005
		Matrix:	SOIL

Analyses	Result	Limit	Qual	Units	DF	Date Analyzed
MERCURY SW-846 7471		SW7471B				Analyst: BK
Mercury	0.669	0.0115		mg/Kg-dry	1	9/13/2005
PERCENT MOISTURE		D2216				Analyst: PA
Percent Moisture	12.9	0		wt%	1	9/8/2005
TOTAL METALS		SW6010B		(SW3050A)		Analyst: JP
Copper	77.6	0.403		mg/Kg-dry	1	9/13/2005 2:33:29 PM
Magnesium	2610	0.403		mg/Kg-dry	1	9/13/2005 2:33:29 PM
Zinc	76.4	0.403		mg/Kg-dry	1	9/13/2005 2:33:29 PM

Qualifiers:	* Value exceeds Maximum Contaminant Level	B	Analyte detected in the associated Method Blank
	E Value above quantitation range	H	Holding times for preparation or analysis exceeded
	J Analyte detected below quantitation limits	ND	Not Detected at the Reporting Limit
	S Spike Recovery outside accepted recovery limits	U	Indicates the compound was analyzed for but not detected

American Analytical Laboratories, LLC.**Date:** 16-Sep-05**CLIENT:** Berninger Environmental, Inc.**Client Sample ID:** B-9 @ 1'-1' 3"**Lab Order:** 0509045**Tag Number:** 7831**Project:** Hernan Ave. Oyster Bay, N.Y.**Collection Date:** 8/26/2005**Lab ID:** 0509045-02A**Date Received:** 9/7/2005**Matrix:** SOIL

Analyses	Result	Limit	Qual	Units	DF	Date Analyzed
MERCURY SW-846 7471						Analyst: BK
Mercury	0.232	0.0116		mg/Kg-dry	1	9/13/2005
PERCENT MOISTURE						Analyst: PA
Percent Moisture	13.8	0		wt%	1	9/8/2005
TOTAL METALS						Analyst: JP
Copper	17.5	0.433		mg/Kg-dry	1	9/13/2005 2:35:43 PM
Lead	26.8	0.325		mg/Kg-dry	1	9/13/2005 2:35:43 PM
Magnesium	852	0.433		mg/Kg-dry	1	9/13/2005 2:35:43 PM
Zinc	25.3	0.433		mg/Kg-dry	1	9/13/2005 2:35:43 PM

Qualifiers:

- * Value exceeds Maximum Contaminant Level
- E Value above quantitation range
- J Analyte detected below quantitation limits
- S Spike Recovery outside accepted recovery limits

- B Analyte detected in the associated Method Blank
- H Holding times for preparation or analysis exceeded
- ND Not Detected at the Reporting Limit
- U Indicates the compound was analyzed for but not detected

American Analytical Laboratories, LLC.

Date: 16-Sep-05

CLIENT: Berninger Environmental, Inc.**Client Sample ID:** B-10 @ 1'-1' 3"**Lab Order:** 0509045**Tag Number:** 7831**Project:** Hernan Ave. Oyster Bay, N.Y.**Collection Date:** 8/26/2005**Lab ID:** 0509045-03A**Date Received:** 9/7/2005**Matrix:** SOIL

Analyses	Result	Limit	Qual	Units	DF	Date Analyzed
MERCURY SW-846 7471		SW7471B				Analyst: BK
Mercury	0.273	0.0113		mg/Kg-dry	1	9/13/2005
PERCENT MOISTURE		D2216				Analyst: PA
Percent Moisture	11.7	0		wt%	1	9/8/2005
TOTAL METALS		SW8010B		(SW3050A)		Analyst: JP
Copper	62.8	0.404		mg/Kg-dry	1	9/13/2005 2:37:35 PM
Lead	70.7	0.303		mg/Kg-dry	1	9/13/2005 2:37:35 PM
Magnesium	1810	0.404		mg/Kg-dry	1	9/13/2005 2:37:35 PM
Zinc	63.0	0.404		mg/Kg-dry	1	9/13/2005 2:37:35 PM

Qualifiers:

- * Value exceeds Maximum Contaminant Level
- E Value above quantitation range
- J Analyte detected below quantitation limits
- S Spike Recovery outside accepted recovery limits

- B Analyte detected in the associated Method Blank
- H Holding times for preparation or analysis exceeded
- ND Not Detected at the Reporting Limit
- U Indicates the compound was analyzed for but not detected

American Analytical Laboratories, LLC.**Date:** 16-Sep-05**CLIENT:** Berninger Environmental, Inc.**Client Sample ID:** B-7 @ 1'-1' 3"**Lab Order:** 0509045**Tag Number:** 7831**Project:** Hernan Ave. Oyster Bay, N.Y.**Collection Date:** 8/26/2005**Lab ID:** 0509045-04A**Date Received:** 9/7/2005**Matrix:** SOIL

Analyses	Result	Limit	Qual	Units	DF	Date Analyzed
MERCURY SW-846 7471		SW7471B				Analyst: BK
Mercury	0.0650	0.0110		mg/Kg-dry	1	9/13/2005
PERCENT MOISTURE		D2216				Analyst: PA
Percent Moisture	9.32	0		wt%	1	9/8/2005
TOTAL METALS		SW6010B		(SW3050A)		Analyst: JP
Calcium	2040	0.532		mg/Kg-dry	1	9/13/2005 2:39:58 PM
Copper	22.1	0.426		mg/Kg-dry	1	9/13/2005 2:39:58 PM
Lead	19.8	0.319		mg/Kg-dry	1	9/13/2005 2:39:58 PM
Magnesium	1460	0.426		mg/Kg-dry	1	9/13/2005 2:39:58 PM
Zinc	31.1	0.426		mg/Kg-dry	1	9/13/2005 2:39:58 PM

Qualifiers:

- * Value exceeds Maximum Contaminant Level
- E Value above quantitation range
- J Analyte detected below quantitation limits
- S Spike Recovery outside accepted recovery limits

- B Analyte detected in the associated Method Blank
- H Holding times for preparation or analysis exceeded
- ND Not Detected at the Reporting Limit
- U Indicates the compound was analyzed for but not detected

American Analytical Laboratories, LLC.**Date:** 16-Sep-05**CLIENT:** Berninger Environmental, Inc.**Client Sample ID:** B-12 @ 1'-1' .25"**Lab Order:** 0509045**Tag Number:** 7832**Project:** Hernan Ave. Oyster Bay, N.Y.**Collection Date:** 8/26/2005**Lab ID:** 0509045-05A**Date Received:** 9/7/2005**Matrix:** SOIL

Analyses	Result	Limit	Qual	Units	DF	Date Analyzed
MERCURY SW-846 7471		SW7471B				Analyst: BK
Mercury	35.5	0.0121		mg/Kg-dry	1	9/13/2005
PERCENT MOISTURE		D2216				Analyst: PA
Percent Moisture	17.4	0		wt%	1	9/8/2005
TOTAL METALS		SW6010B		(SW3050A)		Analyst: JP
Arsenic	31.1	0.571		mg/Kg-dry	1	9/13/2005 2:43:28 PM
Copper	629	0.457		mg/Kg-dry	1	9/13/2005 2:43:28 PM
Lead	709	0.343		mg/Kg-dry	1	9/13/2005 2:43:28 PM
Zinc	390	0.457		mg/Kg-dry	1	9/13/2005 2:43:28 PM

Qualifiers:

- * Value exceeds Maximum Contaminant Level
- E Value above quantitation range
- J Analyte detected below quantitation limits
- S Spike Recovery outside accepted recovery limits

- B Analyte detected in the associated Method Blank
- H Holding times for preparation or analysis exceeded
- ND Not Detected at the Reporting Limit
- U Indicates the compound was analyzed for but not detected

American Analytical Laboratories, LLC.**Date:** 16-Sep-05**CLIENT:** Berninger Environmental, Inc.**Client Sample ID:** B-11 @ 1'-1' .25"**Lab Order:** 0509045**Tag Number:** 7832**Project:** Hernan Ave. Oyster Bay, N.Y.**Collection Date:** 8/26/2005**Lab ID:** 0509045-06A**Date Received:** 9/7/2005**Matrix:** SOIL

Analyses	Result	Limit	Qual	Units	DF	Date Analyzed
MERCURY SW-846 7471						Analyst: BK
Mercury	0.0812	0.0113		mg/Kg-dry	1	9/13/2005
PERCENT MOISTURE						Analyst: PA
Percent Moisture	11.5	0		wt%	1	9/8/2005
TOTAL METALS						Analyst: JP
Arsenic	1.35	0.492		mg/Kg-dry	1	9/13/2005 2:45:33 PM
Copper	6.48	0.394		mg/Kg-dry	1	9/13/2005 2:45:33 PM
Lead	6.96	0.295		mg/Kg-dry	1	9/13/2005 2:45:33 PM
Zinc	73.5	0.394		mg/Kg-dry	1	9/13/2005 2:45:33 PM

Qualifiers: * Value exceeds Maximum Contaminant Level
E Value above quantitation range
J Analyte detected below quantitation limits
S Spike Recovery outside accepted recovery limits

B Analyte detected in the associated Method Blank
H Holding times for preparation or analysis exceeded
ND Not Detected at the Reporting Limit
U Indicates the compound was analyzed for but not detected

American Analytical Laboratories, LLC.

Date: 16-Sep-05

CLIENT: Berninger Environmental, Inc. Client Sample ID: B-3 @ 2' - 2' .5"
Lab Order: 0509045 Tag Number: 7832
Project: Hernan Ave. Oyster Bay, N.Y. Collection Date: 8/26/2005
Lab ID: 0509045-07A Date Received: 9/7/2005 Matrix: SOIL

Analyses	Result	Limit	Qual	Units	DF	Date Analyzed
MERCURY SW-846 7471						Analyst: BK
Mercury	0.0465	0.0116		mg/Kg-dry	1	9/13/2005
PERCENT MOISTURE						Analyst: PA
Percent Moisture	13.9	0		wt%	1	9/8/2005
TOTAL METALS						Analyst: JP
Arsenic	1.90	0.528		mg/Kg-dry	1	9/13/2005 2:50:06 PM
Copper	4.98	0.422		mg/Kg-dry	1	9/13/2005 2:50:06 PM
Lead	8.66	0.317		mg/Kg-dry	1	9/13/2005 2:50:06 PM
Zinc	221	0.422		mg/Kg-dry	1	9/13/2005 2:50:06 PM

Qualifiers: * Value exceeds Maximum Contaminant Level B Analyte detected in the associated Method Blank
E Value above quantitation range H Holding times for preparation or analysis exceeded
J Analyte detected below quantitation limits ND Not Detected at the Reporting Limit
S Spike Recovery outside accepted recovery limits U Indicates the compound was analyzed for but not detected

American Analytical Laboratories, LLC.**Date:** 16-Sep-05**CLIENT:** Berninger Environmental, Inc.**Client Sample ID:** B-1 @ 2'- 2' .5"**Lab Order:** 0509045**Tag Number:** 7832**Project:** Hernan Ave. Oyster Bay, N.Y.**Collection Date:** 8/26/2005**Lab ID:** 0509045-08A**Date Received:** 9/7/2005**Matrix:** SOIL

Analyses	Result	Limit	Qual	Units	DF	Date Analyzed
MERCURY SW-846 7471		SW7471B				Analyst: BK
Mercury	0.0769	0.0133		mg/Kg-dry	1	9/13/2005
PERCENT MOISTURE		D2216				Analyst: PA
Percent Moisture	24.7	0		wt%	1	9/8/2005
TOTAL METALS		SW6010B		(SW3050A)		Analyst: JP
Copper	8.89	0.521		mg/Kg-dry	1	9/13/2005 2:59:20 PM
Lead	24.8	0.390		mg/Kg-dry	1	9/13/2005 2:59:20 PM
Zinc	54.8	0.521		mg/Kg-dry	1	9/13/2005 2:59:20 PM

Qualifiers:

- * Value exceeds Maximum Contaminant Level
- E Value above quantitation range
- J Analyte detected below quantitation limits
- S Spike Recovery outside accepted recovery limits

- B Analyte detected in the associated Method Blank
- H Holding times for preparation or analysis exceeded
- ND Not Detected at the Reporting Limit
- U Indicates the compound was analyzed for but not detected



NYSDOH 11418
NJDEP NY050
CTDOH PH-0205
PADEP 68-00573

Friday, October 07, 2005

Walter Berninger
Berninger Environmental, Inc.
90 Knickerbocker Avenue, Unit B
Bohemia, NY 11716

TEL: (631) 588-6521

FAX (631) 589-6528

RE: Meenan Ave.

Order No.: 0510023

Dear Walter Berninger:

American Analytical Laboratories, LLC. received 1 sample(s) on 8/26/2005 for the analyses presented in the following report.

Samples were analyzed in accordance with the test procedures documented on the chain of custody and detailed throughout the text of this report.

The limits provided in the data package are analytical reporting limits and not Federal or Local mandated values to which the sample results should be compared.

There were no problems with the analyses and all data for associated QC met laboratory specifications.

If you have any questions regarding these tests results, please do not hesitate to call (631) 454-6100 or email me directly at lbeyer@american-analytical.com.

Sincerely,

Lori Beyer
Lab Director

American Analytical Laboratories, LLC.**Date:** 07-Oct-05**CLIENT:** Berninger Environmental, Inc.**Project:** Meenan Ave.**Lab Order:** 0510023**Work Order Sample Summary**

Lab Sample ID	Client Sample ID	Tag Number	Collection Date	Date Received
0510023-01A	B-12 @ 1'-1.25'	7832	8/26/2005	8/26/2005



56 TOLEDO STREET • FARMINGDALE, NEW YORK 11735
(831) 454-6100 • FAX (631) 454-8027

NYSDOH	11418
CTDOH	PH-0205
NJDEP	NY050
PADEP	68-573

TAG # / COC 1832

CHAIN OF CUSTODY / REQUEST FOR ANALYSIS DOCUMENT

[illegible]

* Hold deeper samples pending Analysis of shallow samples

WHITE-OFFICE / CANARY-LAB / PINK-SAMPLE CUSTODIAN / GOLDENROD-CLIENT

AMERICAN ANALYTICAL LABORATORIES, LLC

56 TOLEDO STREET

FARMINGDALE, NEW YORK 11735

TELEPHONE: (631) 454-6100 FAX: (631) 454-8027

DATA REPORTING QUALIFIERS

For reporting results, the following "Results Qualifiers" are used:

Value	If the result is greater than or equal to the detection limit, report the value
U	Indicates the compound was analyzed for but was not detected. Report the minimum detection limit for the sample with the U, i.e. "10U". This is not necessarily the instrument detection limit attainable for this particular sample based on any concentration or dilution that may have been required.
J	Indicates an estimated value. The flag is used: <ol style="list-style-type: none">(1) When estimating a concentration for a tentatively identified compound (library search hits, where a 1:1 response is assumed.)(2) When the mass spectral data indicated the identification, however the result was less than the specified detection limit greater than zero. If the detection limit was 10ug/L and a concentration of 3ug/L was calculated report as 3J. This flag is used when similar situations arise on any organic parameter i.e. Pesticide, PCBs and others.
B	Indicates the analyte was found in the blank as well as the sample report "10B".
E	Indicates the analytes concentration exceeds the calibrated range of the instrument for that specific analysis.
D	This flag identifies all compounds identified in an analysis at a secondary dilution factor.
P	This flag is used for Pesticide / PCB target analyte when there is >25% difference for detected concentrations between the two GC Columns. The higher of the two values is reported on Form I and flagged with a "P".
N	This flag indicates presumptive evidence of a compound. This is only used for tentatively identified compounds (TICs), where the identification is based on a mass spectral library search. It applies to all TIC results. For generic characterization of a TIC, such as chlorinated hydrocarbon, the flag is not used.
H	Indicates sample was received and/or analyzed outside of The method allowable holding time

American Analytical Laboratories, LLC.

Date: 07-Oct-05

CLIENT: Berninger Environmental, Inc.

Client Sample ID: B-12 @ 1'-1.25'

Lab Order: 0510023

Tag Number: 7832

Project: Meenan Ave.

Collection Date: 8/26/2005

Lab ID: 0510023-01A

Date Received: 8/26/2005

Matrix: SOIL

Analyses	Result	Limit	Qual	Units	DF	Date Analyzed
TCLP MERCURY		SW1311/7471B		(SW1311)		Analyst: BK
Mercury	U	0.0200	H	mg/L	1	10/6/2005
TCLP METALS		SW1311/6010B		(SW1311)		Analyst: JP
Arsenic	U	0.0500	H	mg/L	1	10/6/2005
Barium	1.73	0.0500	H	mg/L	1	10/6/2005
Cadmium	U	0.0500	H	mg/L	1	10/6/2005
Chromium	U	0.0500	H	mg/L	1	10/6/2005
Lead	5.12	0.0500	*H	mg/L	1	10/6/2005
Selenium	U	0.0500	H	mg/L	1	10/6/2005
Silver	U	0.0500	H	mg/L	1	10/6/2005

Qualifiers: * Value exceeds Maximum Contaminant Level
E Value above quantitation range
J Analyte detected below quantitation limits
S Spike Recovery outside accepted recovery limits

B Analyte detected in the associated Method Blank
H Holding times for preparation or analysis exceeded
ND Not Detected at the Reporting Limit

U Indicates the compound was analyzed for but not detected