

Project: Spectrum Finishing - Remedial Action
 Contractor: EnviroTrac Environmental Services
 CDM Job No: D-006956 Site No. 1-52-029
 CDM Project Manager: John Blaum

CDM
 100 Crossways Park West
 Woodbury, NY 11797
 Telephone: 516.496.8400
 Fax: 516.496.8864

DAILY REPORT

Day:

S	M	T	W	TH	F	S
---	---	---	---	----	---	---

 Date: 27-Mar-09
 REPORT No. 109
 PAGE No. 1

WEATHER	Clear	Partly Cloudy	Overcast	Rain	Snow
TEMP L/H		42/58			
HUMIDITY	Dry	Moderate	High		
WIND	Calm	Light	Moderate	High	
WIND DIR	N	E	S	W	
	NE	SE	SW	NW	

PREPARED BY: F.Robinson TITLE: Inspector

AVERAGE FIELD FORCE

Name of Contractor	Title	Hours Worked	Remarks
EnviroTrac	Construction Manager	2x8 hrs	M.Rose, J.Szymanski
EnviroTrac	Operator	2x8 hrs	B.Byrnes, B.Gimbel
EnviroTrac	Technician	2x8 hrs	R.Maletta, K.Davies

EQUIPMENT AT THE SITE

I = Idle W = Working

20" Storage Container - W	
Case CX130 Excavator - W	
Case 621D Front End Loader - W	
Daewoo 450 skidder - W	

HEALTH AND SAFETY

Name	Time (From - To)	Task/Level of PPE
All workers onsite were in modified level D-PPE (tyvek and booties)		

CONSTRUCTION ACTIVITIES

Site Representative: Frank Robinson - CDM
Health and Safety Site Officer: N/A
DESCRIPTION OF WORK PERFORMED AND OBSERVED
1-Tailgate H&S meeting performed before the start of the work day. monitoring for dust and VOC's (2 stations) were set up. 2-Air
3-The foundation wall around sump-1 was broken up and removed. A trench was excavated around the foundation wall to undermine the wall, and the soil on the outside wall down to ~7 does not appear to be stained.
4-A small sinkhole developed, ~1' in diameter, above CP-8 due to the heavy equipment traffic in that area. A road plate has been ordered to cover this area.
5-A cast iron sewer pipe was found while excavating sump-1 to the west, pipe is heading to the SW.



x - Designates report is continued on additional pages

CDM Site Representative: F. Robinson

Project Manager: John Blaum

PHOTOGRAPHIC LOG
27-Mar-09
CDM Job No. D-006956
Spectrum Finishing Remedial Action
SITE No. 1-52-029

PHOTO	DATE	TIME	DESCRIPTION
100_00229.jpg	3/27/2009	AM	Sinkhole on top of CP-8
100_00233.jpg	3/27/2009	AM	Cast iron sewer pipe found to the west of sump-1 heading SW
100_00236.jpg	3/27/2009	AM	Undermined foundation wall, NW corner of sump-1
100_00238.jpg	3/27/2009	AM	Foundation wall partially demolished
100_00239.jpg	3/27/2009	PM	Foundation wall completely demolished
100_00241.jpg	3/27/2009	PM	Excavation at the end of the day, looking north
100_00243.jpg	3/27/2009	PM	Excavation at the end of the day, overhead view looking SW

PHOTOS 3/27/09



100_00229.jpg - Sinkhole on top of CP-8



100_00233.jpg - Cast iron sewer pipe found to the west of sump-1, heading SW



100_00236.jpg - Undermined foundation wall, NW corner of sump-1.



100_00238.jpg - Foundation wall partially demolished.



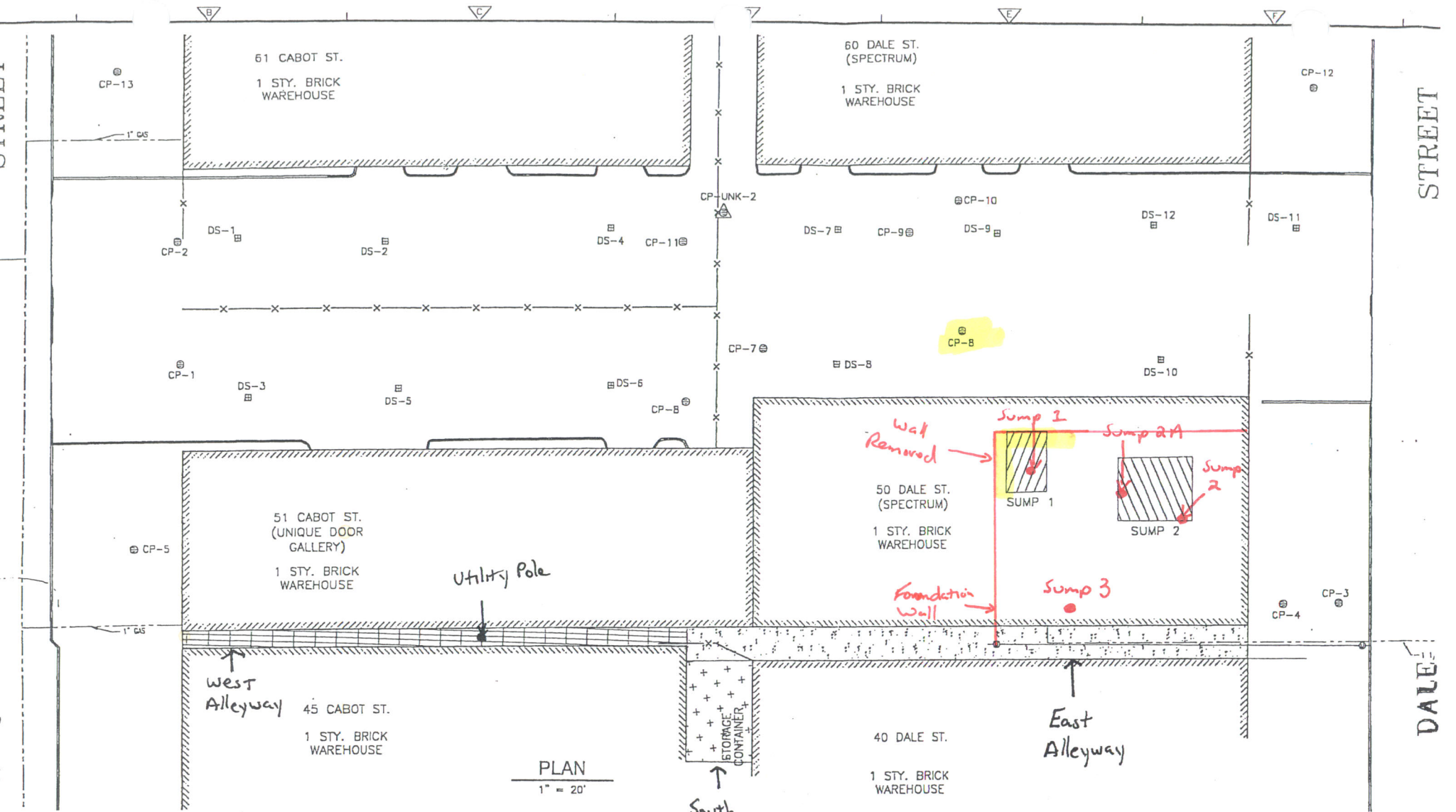
100_00239.jpg - Foundation wall completely demolished.



100_00241.jpg - Excavation at the end of the day, looking north.



100_00243.jpg - Excavation at the end of the day, overhead view looking SW



PLAN
1" = 20'

3/27/09

Work Area

STREET

DALE

61 CABOT ST.
1 STY. BRICK WAREHOUSE

60 DALE ST.
(SPECTRUM)
1 STY. BRICK WAREHOUSE

51 CABOT ST.
(UNIQUE DOOR GALLERY)
1 STY. BRICK WAREHOUSE

50 DALE ST.
(SPECTRUM)
1 STY. BRICK WAREHOUSE

45 CABOT ST.
1 STY. BRICK WAREHOUSE

40 DALE ST.
1 STY. BRICK WAREHOUSE

Utility Pole

STORAGE CONTAINER

South Alleyway

East Alleyway

Sump 1

Sump 2A
Sump 2

Sump 3

Water Removed

Foundation Wall

CP-13

CP-2

DS-1

DS-2

DS-4

CP-11

CP-UNK-2

DS-7

CP-9

CP-10

DS-9

DS-12

DS-11

CP-12

CP-1

DS-3

DS-5

DS-6

CP-8

CP-7

DS-8

CP-8

DS-10

CP-5

CP-4

CP-3

West Alleyway

STORAGE CONTAINER

DALE