

(Fact Sheet Begins Next)

Act Now to Continue Receiving Information About This Site!

DEC's Division of Environmental Remediation (DER) now distributes information about contaminated sites *electronically by email*.

If you would like to continue to receive information about the contaminated site featured in this fact sheet:

You must sign up for the DER email listserv:

www.dec.ny.gov/chemical/61092.html

DER cannot register your email address - only the email address owner can do so. If you already have signed up for the listserv for the county in which the site is located, you need do nothing.



Why You Should Go “Paperless”:

Get site information faster and share it easily;

Receive information about all sites in a chosen county - read what you want, delete the rest;

It helps the environment and stretches your tax dollars.

If “paperless” is not an option for you, call or write to the DER project manager identified in this fact sheet. Indicate that you need to receive paper copies of fact sheets through the Postal Service. Include the site name in your correspondence. The option to receive paper is available to individuals only. Groups, organizations, businesses, and government entities are assumed to have email access.

This page intentionally left blank.



FACT SHEET

State Superfund Program

Receive Site Fact Sheets by *Email*. See "For More Information" to Learn How.

Site Name: Dzus Fastener Co., Inc.
DEC Site #: 152033
Address: 425 Union Boulevard
West Islip, NY 11795

Have questions?
See
"Who to Contact"
Below

Willetts Creek Investigation and Future Cleanup Steps Public Meeting Announced

**Public Availability Session and Meeting, Wednesday,
3/23/2016 Availability Session: 6:00 pm
Presentation: 7:00 PM
West Islip High School
Lobby/Auditorium
1 Lions Path
West Islip, New York 11795**

NYSDEC invites you to a public meeting to discuss the current investigation and future cleanup steps for the newly identified Willetts Creek cadmium-impacted sediment. NYSDEC will provide details about the study and invite your questions.

The NYS Department of Environmental Conservation (NYSDEC) recently performed an environmental study in Willetts Creek downstream of the Dzus Fastener Co., Inc. site ("site") located at 425 Union Boulevard, West Islip, Suffolk County. Please see the map for the site location. Documents related to the cleanup of this site and Willetts Creek can be found at the location(s) identified below under "Where to Find Information."

Based upon the results of this study, the site (the former contamination source) was relisted as a Class "2" site in the State Registry of Inactive Hazardous Waste Sites (list of State Superfund sites). A Class 2 site represents a significant threat to public health or the environment; action is required. The area that presents a significant threat is a portion of the Willetts Creek channel and adjacent wetlands.

Highlights of the Site Investigation

After monitoring the cleanup of Lake Capri since 1999, in 2013 DEC noted an increase in cadmium levels. The purpose of the environmental study was to define the nature and extent of cadmium and other metals within the Willetts Creek area related to the past discharges from this site.

Additional sediment samples and surface soil samples were collected in 2013 and 2014 to assess the extent of elevated cadmium concentrations in the creek and floodplains along Willetts Creek, identified by routine long-term monitoring. In 2015 DEC developed alternatives in order to review remedial options to address the contamination. The previous cleanup of the creek areas and Lake Capri (1999) required remediation of sediments containing cadmium levels greater than 9 part per million (ppm). This recent sampling indicated that there are levels of cadmium in the floodplain that significantly exceed this cleanup goal. In a few limited areas these levels are higher than 900 ppm. Most of the newly identified areas of concern however, contain levels much lower than 900 ppm but still above the cleanup criteria of 9 ppm. Based on this sampling it is believed this newly identified contamination is attributable to recent high water events and subsequent erosion and redistribution of sediment likely the result of the high flows resulting from Sandy. As part of this additional investigation, soil samples were taken by the DEC on the athletic fields of the Beach Street Middle School and in areas behind the West Islip High School that are adjacent to the Creek. All surface soil samples on the school property, except for one, were below the restricted residential cleanup criteria of 4.3 ppm. This one small exceedance (9.8 ppm) was found behind the Middle School at the top of bank along the creek.

Next Steps

DEC is evaluating alternatives to address the contamination found in the off-site floodplain and the creek. An alternatives analysis report has been developed. This report uses information acquired during the investigation to develop and evaluate potential ways to clean up contamination related to the site.

NYSDEC will then develop a draft cleanup plan, called a "Proposed Remedial Action Plan". This plan will describe the alternatives evaluated and identify the one preferred by NYSDEC. The draft cleanup plan explains the decision that led to the preferred remedy by discussing each alternative and the reasons for choosing or rejecting it. The goal of the plan will be to ensure the protection of public health and the environment. NYSDEC will announce the draft cleanup plan in a future fact sheet and will present it to the public for its review and comment during a 30-day comment period and at a public meeting.

Although it appears that the contamination has remained within the banks of the creek and wetland, additional investigation will be necessary to confirm this. Sampling of adjacent residential properties is included in this additional sampling effort. Property owners along the area identified in Figure # will be contacted regarding this sampling soon.

Background

Location:

The Dzus Fastener site is located at 425 Union Boulevard, West Islip, Suffolk County, New York.

Site Features:

The site is one acre in size and is located in a mixed residential, commercial, and industrial area. The site is triangular in shape and encompasses the area of the former leaching pools. The Site is bounded by Union Avenue to the south, the former Dzus facility and Beach Street to the west, and Long Island railroad tracks to the north. Immediately to the east of the site is Willetts Creek which drains south into Lake Capri, an eight-acre man-made lake. Lake Capri drains into the tidal portion of Willetts Creek through a culvert located under Montauk Highway.

Current Zoning/Use(s):

The facility changed its name from Dzus Fastener Co. Inc. to DFCI Solutions, Inc. in 2001, but operations have remained the same since its construction at this location in 1937. Operations

included the design and manufacture of ¼-turn fasteners, and quick acting latches in steel, aluminum and plastic for use in military and commercial industries. In 2015, DFCI ceased operations and moved all equipment out of the facility.

Historic Use of the Site:

Dzus Fastener had produced fasteners and springs since 1936 at this location. Wastes from metal plating and special finishing operations consisted of oils, heavy metals and salts were discharged to leaching pools on-site in the area under the parking lot on the eastern edge of the property. An Interim Remedial Measure (IRM) was completed by Dzus in October 1990, during which approximately 1,960 cubic yards of contaminated soil from the area of the industrial leach field were removed. Soils and groundwater were contaminated with cadmium, chromium, cyanide, and organic compounds.

Operable Unit(s):

The site consists of three operable units. An operable unit (OU) represents a portion of a remedial program for a site that for technical or administrative reasons can be addressed separately to investigate, eliminate or mitigate a release, threat of release or exposure pathway resulting from the site contamination.

Operable Unit 1 (OU1) encompassed the one-acre source area (on-site) at the eastern end of the former Dzus facility property along with off-site areas of the Dzus facility and was addressed by the IRM described above.

Operable Unit 2 (OU2) encompassed the contaminated sediments and groundwater in Willetts Creek upstream of Lake Capri and Lake Capri. Sediment was excavated in the vicinity of the foot bridge leading to the High School and at the outfall drain pipe from the site. A ROD for Operable Unit 2 (off-site sediment and groundwater) was signed in October 1997. Dredging of Lake Capri and a portion of Willetts Creek was conducted between June and December 1999. Nineteen thousand (19,000) cubic yards of sediment were removed from Lake Capri and Willetts Creek. The newly created operable unit 3 (OU3) encompasses an area of wetlands adjacent to and inclusive of the Willetts Creek channel upstream of Lake Capri which were found to be contaminated during routine post-remedial action effectiveness sampling.

Site Geology and Hydrogeology:

Groundwater flow is to the south across the site, parallel to the flow of Willetts Creek and towards Lake Capri, with a depth to groundwater of approximately 10 feet.

Site Management: Since the completion of the Capri Lake related dredging in 1999 the site has been in the site management phase with long term monitoring consisting of groundwater sampling; biota sampling in Willetts Creek; sampling of surface water and sediment sampling of Willetts Creek and Lake Capri; and inspection of the stabilized area onsite undertaken on a yearly basis.

Health Assessment:

Since the site soils have been stabilized and the area is covered by an asphalt cover, people will not come into contact with site related soil and groundwater contamination unless they dig below this cover. People are not drinking contaminated groundwater as the area is served by a public water supply that is not affected by this contamination. People may come into contact with contaminants present in sediments and some floodplain soils of Willetts Creek upon entering or exiting the Creek and adjacent wetland areas. Additional investigation is necessary to evaluate the potential for contact to site related contaminants that may be present in some residential yards adjacent to the Creek.

Additional site details, including the environmental assessment summary, are available on NYSDEC's website at:

<http://www.dec.ny.gov/cfmx/extapps/derexternal/haz/details.cfm?pageid=3&progno=152033>

State Superfund Program: New York's State Superfund Program (SSF) identifies and characterizes suspected inactive hazardous waste disposal sites. Sites that pose a significant threat to public health and/or the environment go through a process of investigation, evaluation, cleanup and monitoring.

For more information about the SSF, visit: <http://www.dec.ny.gov/chemical/8439.html>

FOR MORE INFORMATION**Where to Find Information**

Project documents are available at the following location(s) to help the public stay informed.

West Islip Public Library
Attn: Donna MacGilvray
3 Higbie Lane
West Islip, NY 11795
phone: (631) 661-7080
(dmacgilvray@westisliplib.org)

Project Related Questions

Payson Long
Department of Environmental Conservation
Division of Environmental Remediation
625 Broadway
Albany, NY 12233-7017
(518)402-9813
payson.long@dec.ny.gov

Site-Related Health Questions

Brad Wenskoski/Scarlett McLaughlin
New York State Department of Health
Bureau of Environmental Exposure Investigation
Empire State Plaza, Corning Tower, Room 1787
Albany, NY 12237
(518)402-7880
BEEI@health.ny.gov

We encourage you to share this fact sheet with neighbors and tenants, and/or post this fact sheet in a prominent area of your building for others to see.

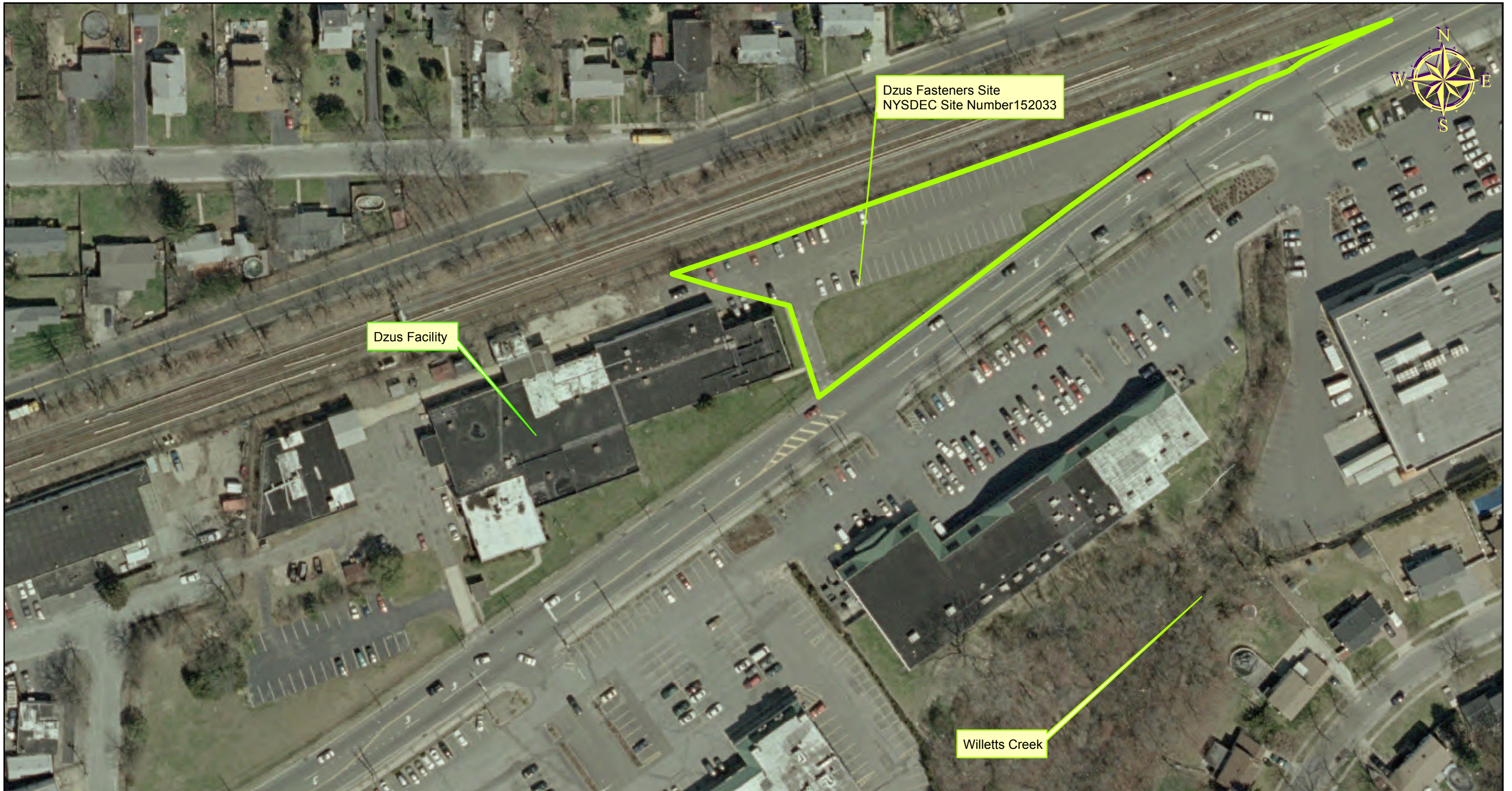
Receive Site Fact Sheets by Email

Have site information such as this fact sheet sent right to your email inbox. NYSDEC invites you to sign up with one or more contaminated sites county email listservs available at the following web page: <http://www.dec.ny.gov/chemical/61092.html>. It's quick, it's free, and it will help keep you *better informed*.



As a listserv member, you will periodically receive site-related information/announcements for all contaminated sites in the county(ies) you select.

Note: Please disregard if you already have signed up and received this fact sheet electronically.



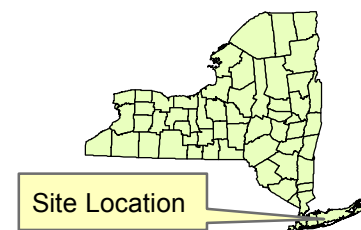
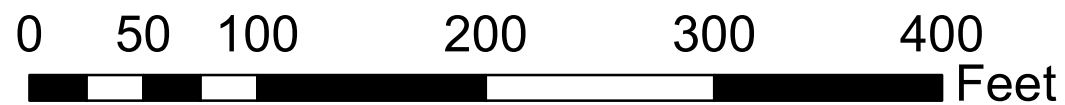
Dzus Fasteners Site

NYSDEC Site Number 152033


425 Union Blvd.
West Islip, NY

November 12, 2015

Map Created by: Payson Long



Legend

-  Limits of Site Boundary
(Also identified as Parcel Number 2-
Treatment Cell Area)
- Parcel Id-Section 455 Block 01 Lot 64.1
Size-1 Acre