

**Landfill Gas and Control System Monitoring
Town of Huntington East Northport Landfill
East Northport, New York
June, 2019**

Prepared for:

**Town of Huntington Department of Environmental Waste Management
100 Main Street
Huntington, New York 11743**

Prepared by:

**RNC Environmental Geology, P.C.
171 Deer Park Ave., Suite 3
Babylon, New York 11702**

RNC Environmental Geology, P.C.

TABLE OF CONTENTS

	Page
Introduction	1
Scope of Work	1
Summary of Results	2
General	2
Monitoring Wells	2
LFG Control Wells	2
Condensate Traps	2
Discussion	3
Methane Monitoring Data	3
Physical and Operating Condition	3
Recommendations	4

Figure

Following Page

Figure 1. Landfill Gas Monitoring and Control System	1
--	---

Summary Tables

Following Page

Table 1. Landfill Gas Monitoring Well Data.....	4
Table 2. Landfill Gas Control Well Data	4
Table 3. Summary of Methane Detections	4
Table 4. Landfill Gas Control Well Methane Data	4

Appendix

Appendix 1. Landfill Gas Control Well Vacuum Data	
---	--

RNC Environmental Geology, P.C.

Landfill Gas and Control System Monitoring Town of Huntington East Northport Landfill East Northport, New York June, 2019

Introduction

Presented herein are the results of June, 2019 (i.e., 2nd Quarter) landfill gas and control system monitoring activities performed at the Town of Huntington East Northport Landfill, as stipulated by the New York State Department of Environmental Conservation.

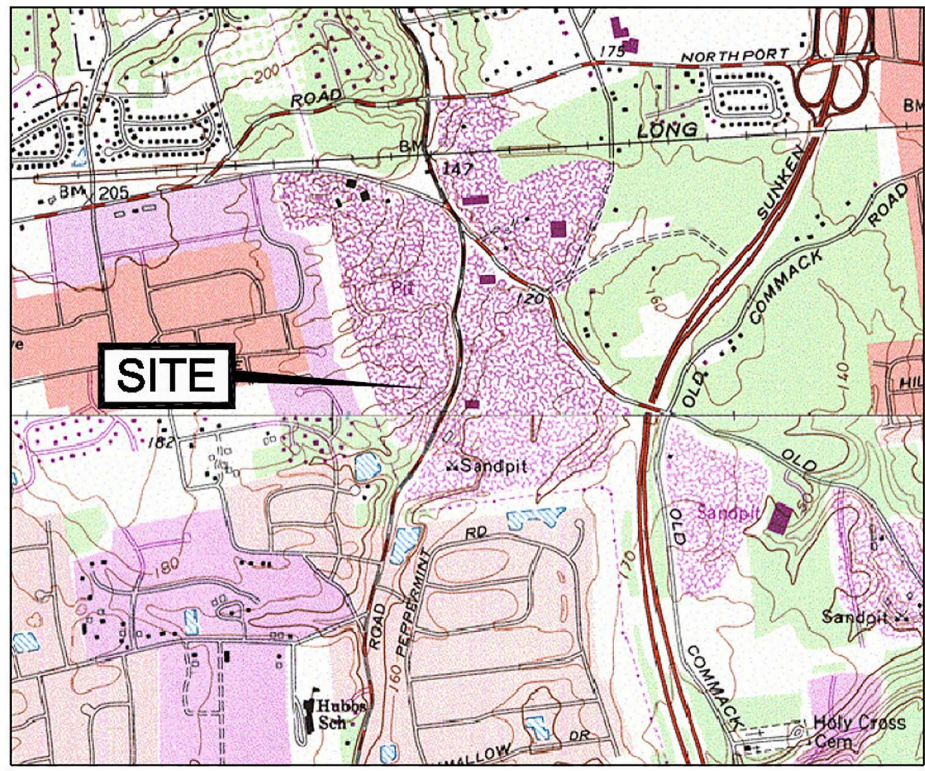
The primary landfill gas migration control system consists of thirty active landfill gas control wells connected - via a single header pipe forming a complete loop around the 44 acre East Northport Landfill - to one blower station. Landfill gas monitoring wells (consisting of 3-4 probes screened from approximately 5-70 feet below grade), situated outside of the aforementioned header pipe, provide a means to verify the control system's efficacy. Separate landfill gas control and monitoring systems are located at adjacent Animal Control and Resource Recovery Facilities.

Figure 1 depicts the landfill area and pertinent components of the landfill gas monitoring and control system. The scope-of-work completed (per our agreement with the Town of Huntington Department of Environmental Waste Management dated January 10, 2019) precedes a summary of results. A discussion of methane monitoring data - with an emphasis on trends and occurrence - and the system's physical and operating condition follows.

Scope-of-Work

The scope-of-work includes performance of the following on a quarterly basis:

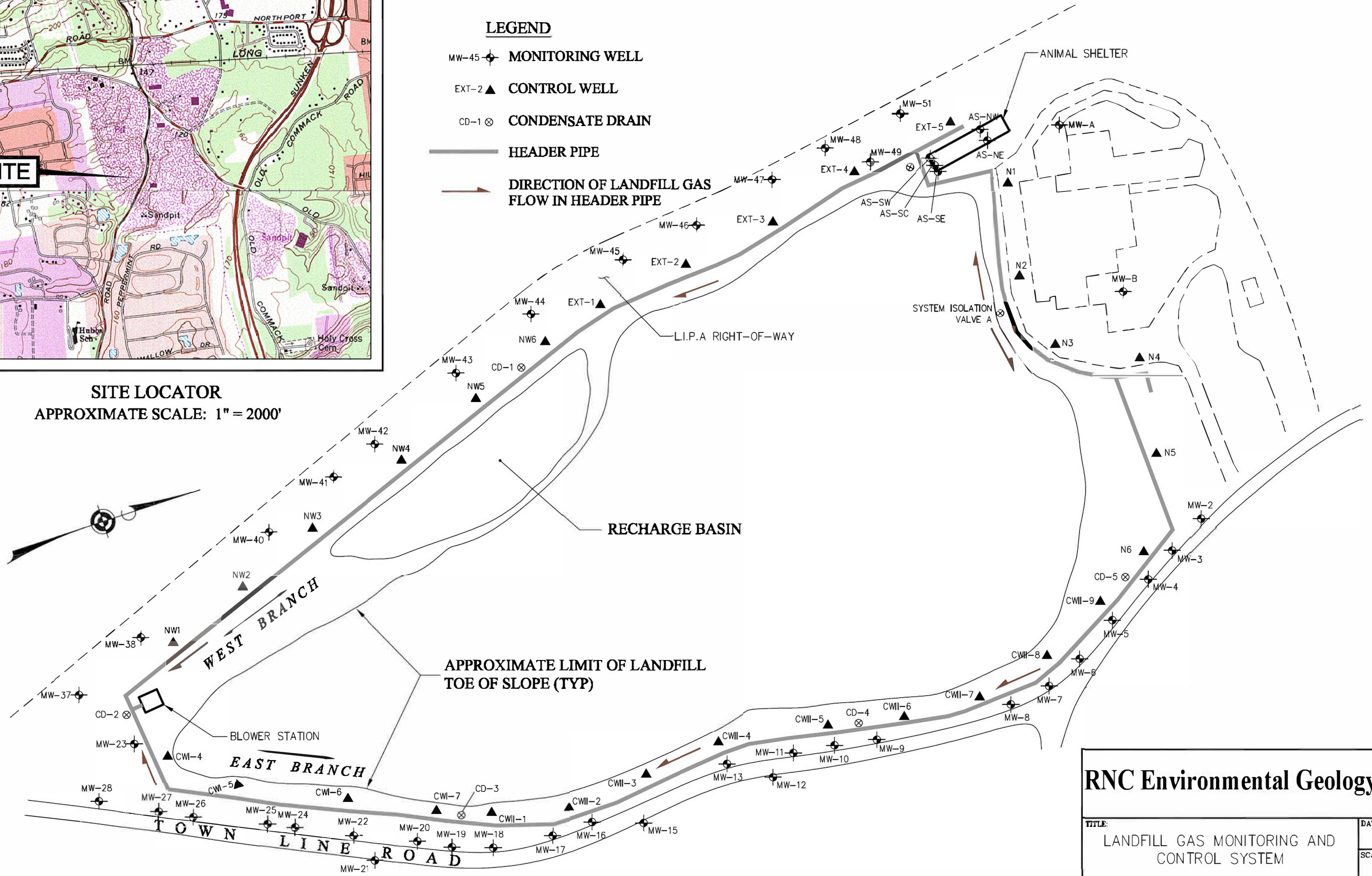
- 1) Monitoring of all probes in 41 landfill monitoring wells and up to 5 probes around the Town Animal Control Facility for methane gas and gas pressure.
- 2) Monitoring of 30 methane control wells and blower station for temperature, flow rate, vacuum, methane and oxygen (balance of the control system to be checked and adjustment to wells and to blower intake made, if necessary).



SITE LOCATOR
 APPROXIMATE SCALE: 1" = 2000'

LEGEND

- MW-45 ◉ MONITORING WELL
- EXT-2 ▲ CONTROL WELL
- CD-1 ⊗ CONDENSATE DRAIN
- HEADER PIPE
- ➔ DIRECTION OF LANDFILL GAS FLOW IN HEADER PIPE



RNC Environmental Geology, P.C.

TITLE: LANDFILL GAS MONITORING AND CONTROL SYSTEM		DATE: 7/11/2019
FIGURE: 1		SCALE: AS SHOWN
DRAWING NO.: 01006-1A		APPR. BY: B.C.
TOWN OF HUNTINGTON EAST NORTHPORT LANDFILL EAST NORTHPORT, NY		

RNC Environmental Geology, P.C.

- 3) Examination of 5 condensate traps in the control system for proper operation and water accumulation.
- 4) Noting of any problems, damage, missing parts etc. at each monitoring well, methane control well, condensate trap, Animal Control Facility probes and blower station.

Summary of Results

General

Reported monthly monitoring activities were performed June 27, 2019. Climatic conditions for the monitoring period are as follows:

Temperature: 88 (°F); Barometric Pressure: 29.90 (in. Hg); Relative Humidity: 90.0%; Precipitation: 0.00 inches; Wind Speed & Direction: 16.0 mph, northeasterly.

Monitoring Wells

A summary of measured and recorded landfill gas monitoring well data is presented on Table 1. As shown, methane was not detected throughout the entire monitoring well network.

LFG Control Wells

Table 2 presents a summary of measured and recorded landfill gas control well data; including the system's blower station where 2 "inlet" measuring points (Blower Station 1 & 2) and 1 "outlet" measuring point (Blower Station 3) are located. As shown on Table 2, control well vacuum values (i.e., negative pressure), a direct indicator of the system's balance, range from 0.00 – -1.69 (in. H₂O). "Extracted" methane values range from 0.0 – 1.3 %.

Condensate Traps

Standing water measured within condensate traps CD-1 (5.1 feet), CD-2 (6.0 feet), CD-3 (7.6 feet), CD-4 (8.0 feet) and CD-5 (14.5 feet) was evacuated, as per usual, upon the completion of monitoring activities.

Discussion

Methane Monitoring Data

A summary of measured and recorded methane concentrations detected at landfill gas monitoring wells throughout the period-of-record from January, 2006 through June, 2019 is shown on Table 3. As shown on Table 3, methane has historically been detected sporadically and at low levels at 14 site monitoring wells. The highest concentration detected throughout the entire landfill gas monitoring well network continues to be 5.0 %; as measured at Animal Control Facility monitoring well AS-NE during March, 2001 monitoring activities (see October, 2007 report).

Methane has not been detected at primary landfill gas migration control system monitoring wells since June, 2002, when a nominal concentration of 0.1% was recorded at MW-49. The low-level and sporadic nature of methane detections indicates that landfill gas control systems in relation to both the Animal Control Facility and East Northport Landfill continue to perform effectively.

A summary of methane concentrations detected at landfill gas control wells during the period-of-record from January, 2006 through June, 2019 is presented on Table 4. As shown, with the exception of a distinct decrease in reported concentrations from July through September, 2013, methane values are generally consistent throughout this period.

Physical and Operating Condition

Based upon current and historical landfill gas monitoring data summarized above, the East Northport Landfill's primary landfill gas control system continues to effectively negate the off-site migration of methane. Vacuum values measured and recorded since January of 2010 have been historically low throughout the system (see Appendix 1). This phenomenon is attributable to precipitation and subsequent control well flooding.

Table 1 and Table 2 note the physical condition of system monitoring wells and control wells, respectively. As shown, with the exception of: monitoring wells MW-4 (all labcocks cracked/missing), MW-13 (riser pipe disconnected at probe B), MW-15 (mislabeled as MW-14), MW-19 (riser pipe "A" missing labcock), MW-21 (mislabeled as MW-15), MW-24 (riser pipe "C" missing labcock), MW-25 (riser pipe "A" missing labcock), MW-41 (riser pipe "C" missing labcock), MW-45 (riser pipe disconnected at probe B), MW-47 (inaccessible) and MW-48 (inaccessible) and control wells N-1 (flooded) and CWII-6 (flooded), monitoring wells and control wells were accessible and in good condition.

RNC Environmental Geology, P.C.

Note that blower station pump # 1 was operating during June monitoring activities and all control wells continue to be set in the full-open-position. This full-open-position will be maintained for an evaluation period and modified if/as necessary.

Recommendations

- * In the event that methane is detected at any monitoring well associated with the primary landfill gas migration control system, recommence the monitoring of off and on-site structures.
- * Assess occurrence of methane versus landfill area (i.e., identify dominant landfill gas production zones).
- * Continue assessment of potential impact of all control valves at full-open-position on system-wide vacuum/methane levels.
- * Increase the inspection (e.g., weekly) and, when necessary (i.e., following extended periods of precipitation or snow melt), increase the pumpage periodicity of standing water within condensate traps CD-1 through CD-5. Also assess whether or not standing water is within select control wells (e.g., CWII-6, N-1) and remove, when present.
- * Confirm anticipated increase in control well vacuum values with decreasing precipitation. In the event vacuum values do not increase, test the primary landfill gas migration control system header pipe for the presence of blockages and/or leaks.
- * Increase the inspection periodicity of the system blower station to ensure it is functioning at an appropriate rate.

Table 1
Landfill Gas Monitoring Well Data
Town of Huntington East Northport Landfill, East Northport, New York
Measured June 27, 2019

Well No.	Probe Pressure (in. H ₂ O)				Methane 0-100% (Volume)				Condition
	A	B	C	D	A	B	C	D	
MW-A	-0.10	-0.03			0.0	0.0			
MW-B	-0.02	-0.03			0.0	0.0			
MW-2	0.00	0.00	0.00	0.00	0.0	0.0	0.0	0.0	
MW-3	-0.03	-0.02	-0.05	0.00	0.0	0.0	0.0	0.0	
MW-4	0.00	0.00	0.00	0.00	0.00	0.00	0.00	0.00	<i>All labcocks cracked/missing</i>
MW-5	-0.09	-0.08	-0.01		0.0	0.0	0.0		
MW-6	0.00	0.00	0.00		0.0	0.0	0.0		
MW-7	0.00	0.00	0.00		0.0	0.0	0.0		
MW-8	0.00	0.00	0.00		0.0	0.0	0.0		
MW-9	0.00	0.00	0.00		0.0	0.0	0.0		
MW-10	-0.04	0.00	0.00	-0.04	0.0	0.0	0.0	0.0	
MW-11	0.90	0.02	-0.02	-0.03	0.0	0.0	0.0	0.0	
MW-12	-0.12	-0.15	-0.12		0.0	0.0	0.0		
MW-13	-0.10	NA	-0.05		0.0	NA	0.0		<i>Riser pipe disconnected/missing</i>
MW-15	0.00	0.00	0.00		0.0	0.0	0.0		<i>Mislabeled as MW-14</i>
MW-16	-0.11	-0.10	-0.09		0.0	0.0	0.0		
MW-17	0.00	0.00	0.00		0.0	0.0	0.0		
MW-18	0.00	0.00	0.00		0.0	0.0	0.0		
MW-19	0.00	0.00	0.00	0.00	0.0	0.0	0.0	0.0	<i>Riser pipe "A" missing labcock</i>
MW-20	-0.15	-0.19	-0.19		0.0	0.0	0.0		
MW-21	-0.10	-0.05	-0.01	0.00	0.0	0.0	0.0	0.0	<i>Mislabeled as MW-15</i>
MW-22	-0.11	-0.12	-0.05		0.0	0.0	0.0		

Table 1 (continued)

Well No.	Probe Pressure (in. H2O)				Methane 0-100% (Volume)				Condition
	A	B	C	D	A	B	C	D	
MW-23	-0.05	-0.03	-0.07	-0.10	0.0	0.0	0.0	0.0	
MW-24	-0.05	-0.05	0.00		0.0	0.0	0.0		Riser pipe "C" missing labcock
MW-25	0.00	-0.20	-0.19		0.0	0.0	0.0		Riser pipe "A" missing labcock
MW-26	-0.07	-0.02	-0.05	0.00	0.0	0.0	0.0	0.0	
MW-27	-0.02	-0.09	-0.01		0.0	0.0	0.0		
MW-28	0.00	0.00	-0.04		0.0	0.0	0.0		
MW-37	0.00	0.00	0.00		0.0	0.0	0.0		
MW-38	-0.03	-0.04	-0.07		0.0	0.0	0.0		
MW-40	0.00	0.00	0.00	-0.05	0.0	0.0	0.0	0.0	
MW-41	-0.03	0.00	0.00		0.0	0.0	0.0		Riser pipe "C" missing labcock
MW-42	0.00	-0.02	-0.03		0.0	0.0	0.0		
MW-43	0.00	0.00	-0.02		0.0	0.0	0.0		
MW-44	0.00	-0.02	0.00		0.0	0.0	0.0		
MW-45	0.00	NA	0.00		0.0	NA	0.0		Riser pipe "B" disconnected
MW-46	-0.12	-0.18	-0.09	-0.08	0.0	0.0	0.0	0.0	
MW-47	NA	NA	NA		NA	NA	NA		Inaccessible
MW-48	NA	NA	NA		NA	NA	NA		Inaccessible
MW-49	-0.10	-0.03	-0.04		0.0	0.0	0.0		
MW-51	-0.04	-0.02	0.00		0.0	0.0	0.0		
AS-NW	0.00				0.0				
AS-NE	0.00				0.0				
AS-SW	0.00				0.0				
AS-SC	0.00				0.0				
AS-SE	0.00				0.0				

A - Shallow Probe B - Middle Probe C - Deep Probe D - Deepest Probe

Shading indicates the well is not equipped with that particular probe.

NA - Not Available

**Table 2
Landfill Gas Control Well Data
Town of Huntington East Northport Landfill, East Northport, New York
Measured June 27, 2019**

Well No.	Temp (°F)	Flow Rate (ft ³ /min)	Vacuum (in. H ₂ O)	Methane 0-100 % (Volume)	Oxygen % in Air	Condition
CWI-4	90.1	126.55	-1.36	0.0	20.1	
CWI-5	102.3	161.16	-1.60	0.0	18.9	
CWI-6	93.0	109.62	-1.65	0.3	18.5	
CWI-7	98.8	52.20	-1.11	0.4	18.4	
CWII-1	92.0	78.29	-1.46	1.4	16.4	
CWII-2	92.5	43.71	-1.11	0.3	19.5	
CWII-3	97.4	40.47	-1.44	1.3	14.8	
CWII-4	91.7	87.93	-1.48	0.9	16.3	
CWII-5	86.3	45.41	-1.47	0.1	17.3	
CWII-6	NA	NA	NA	NA	NA	<i>Flooded</i>
CWII-7	92.4	51.97	-1.48	0.9	16.9	
CWII-8	90.0	4.57	0.00	0.0	20.2	
CWII-9	84.3	10.19	-0.18	0.0	17.3	
NW-1	82.0	138.13	-1.59	0.0	20.7	
NW-2	95.8	88.14	-1.69	0.0	20.6	
NW-3	102.2	100.50	-1.43	0.0	20.4	
NW-4	101.0	58.33	-1.31	0.0	20.2	
NW-5	76.4	87.08	-1.01	0.0	20.8	
NW-6	83.9	92.10	-1.00	0.0	20.8	
Ext-1	87.4	66.66	-1.34	0.0	17.6	
Ext-2	89.6	67.54	-1.47	0.0	16.7	
Ext-3	82.1	65.75	-1.30	0.0	17.9	
Ext-4	89.7	69.21	-1.10	0.0	17.8	
Ext-5	91.9	126.20	-0.09	0.0	20.8	
N-1	NA	NA	NA	NA	NA	<i>Flooded</i>
N-2	86.8	71.30	-1.42	0.0	18.1	
N-3	87.5	62.80	-1.23	0.0	18.0	
N-4	88.3	84.10	-1.57	0.0	18.0	
N-5	85.9	60.00	-1.34	0.0	17.3	
N-6	87.2	57.60	-1.40	0.0	17.2	
Blower Station - 1	80.5	270.69	-3.60	0.0	19.4	
Blower Station - 2	80.9	214.00	-1.43	0.0	21.1	
Blower Station - 3	90.4	0.46	1.36	0.0	21.2	

NA - Not Available

Table 3
Summary of Methane Detections
Landfill Gas Monitoring Wells
Town of Huntington East Northport Landfill, East Northport, New York
for period of record between January, 2006 and June, 2019

Well	1/06	2/06	3/06	4/06	5/06	6/06	7/06	8/06	9/06	10/06	11/06	12/06	1/07	2/07	3/07	4/07
MW-7C	0.0	0.0	0.0	0.0	0.0	0.0	0.0	0.0	0.0	0.0	0.0	0.0	0.0	0.0	0.0	0.0
MW-8C	0.0	0.0	0.0	0.0	0.0	0.0	0.0	0.0	0.0	0.0	0.0	0.0	0.0	0.0	0.0	0.0
MW-9A	0.0	0.0	0.0	0.0	0.0	0.0	0.0	0.0	0.0	0.0	0.0	0.0	0.0	0.0	0.0	0.0
MW-9B	0.0	0.0	0.0	0.0	0.0	0.0	0.0	0.0	0.0	0.0	0.0	0.0	0.0	0.0	0.0	0.0
MW-9C	0.0	0.0	0.0	0.0	0.0	0.0	0.0	0.0	0.0	0.0	0.0	0.0	0.0	0.0	0.0	0.0
MW-11A	0.0	0.0	0.0	0.0	0.0	0.0	0.0	0.0	0.0	0.0	0.0	0.0	0.0	0.0	0.0	0.0
MW-12A	0.0	0.0	0.0	0.0	0.0	0.0	0.0	0.0	0.0	0.0	0.0	0.0	0.0	0.0	0.0	0.0
MW-12C	0.0	0.0	0.0	0.0	0.0	0.0	0.0	0.0	0.0	0.0	0.0	0.0	0.0	0.0	0.0	0.0
MW-18A	0.0	0.0	0.0	0.0	0.0	0.0	0.0	0.0	0.0	0.0	0.0	0.0	0.0	0.0	0.0	0.0
MW-19A	0.0	0.0	0.0	0.0	0.0	0.0	0.0	0.0	0.0	0.0	0.0	0.0	0.0	0.0	0.0	0.0
MW-24C	0.0	0.0	0.0	0.0	0.0	0.0	0.0	0.0	0.0	0.0	0.0	0.0	0.0	0.0	0.0	0.0
MW-38B	0.0	0.0	0.0	0.0	0.0	0.0	0.0	0.0	0.0	0.0	0.0	0.0	0.0	0.0	0.0	0.0
MW-39A	0.0	0.0	0.0	0.0	0.0	0.0	NA	NA	NA	NA	NA	NA	NA	NA	NA	NA
MW-49A	0.0	0.0	0.0	0.0	0.0	0.0	0.0	0.0	0.0	0.0	0.0	0.0	0.0	0.0	0.0	0.0
MW-49B	0.0	0.0	0.0	0.0	0.0	0.0	0.0	0.0	0.0	0.0	0.0	0.0	0.0	0.0	0.0	0.0
MW-49C	0.0	0.0	0.0	0.0	0.0	0.0	0.0	0.0	0.0	0.0	0.0	0.0	0.0	0.0	0.0	0.0
AS-SW	0.0	0.0	0.0	0.0	0.0	0.0	0.0	0.0	0.0	0.0	0.0	0.0	0.0	0.0	0.0	0.0
AS-SC	0.0	0.0	0.0	0.0	0.0	0.0	0.0	0.0	0.0	0.0	0.0	0.0	0.0	0.0	0.0	0.0
AS-NE	0.0	0.0	0.0	0.0	0.0	0.0	0.1	0.0	0.0	0.1	0.0	0.0	0.0	0.0	0.0	0.0

NA - Not Available

Measured in % Volume

Table 3 (continued)

Well	5/07	6/07	7/07	8/07	9/07	10/07	11/07	12/07	1/08	2/08	3/08	4/08	5/08	6/08	7/08	8/08
MW-7C	0.0	0.0	0.0	0.0	0.0	0.0	0.0	0.0	0.0	0.0	0.0	0.0	0.0	0.0	0.0	0.0
MW-8C	0.0	0.0	0.0	0.0	0.0	0.0	0.0	0.0	0.0	0.0	0.0	0.0	0.0	0.0	0.0	0.0
MW-9A	0.0	0.0	0.0	0.0	0.0	0.0	0.0	0.0	0.0	0.0	0.0	0.0	0.0	0.0	0.0	0.0
MW-9B	0.0	0.0	0.0	0.0	0.0	0.0	0.0	0.0	0.0	0.0	0.0	0.0	0.0	0.0	0.0	0.0
MW-9C	0.0	0.0	0.0	0.0	0.0	0.0	0.0	0.0	0.0	0.0	0.0	0.0	0.0	0.0	0.0	0.0
MW-11A	0.0	0.0	0.0	0.0	0.0	0.0	0.0	0.0	0.0	0.0	0.0	0.0	0.0	0.0	0.0	0.0
MW-12A	0.0	0.0	0.0	0.0	0.0	0.0	0.0	0.0	0.0	0.0	0.0	0.0	0.0	0.0	0.0	0.0
MW-12C	0.0	0.0	0.0	0.0	0.0	0.0	0.0	0.0	0.0	0.0	0.0	0.0	0.0	0.0	0.0	0.0
MW-18A	0.0	0.0	0.0	0.0	0.0	0.0	0.0	0.0	0.0	0.0	0.0	0.0	0.0	0.0	0.0	0.0
MW-19A	0.0	0.0	0.0	0.0	0.0	0.0	0.0	0.0	0.0	0.0	0.0	0.0	0.0	0.0	0.0	0.0
MW-24C	0.0	0.0	0.0	0.0	0.0	0.0	0.0	0.0	0.0	0.0	0.0	0.0	0.0	0.0	0.0	0.0
MW-38B	0.0	0.0	0.0	0.0	0.0	0.0	0.0	0.0	0.0	0.0	0.0	0.0	0.0	0.0	0.0	0.0
MW-39A	NA	NA	NA	NA	NA	NA	NA	NA	NA	NA	NA	NA	NA	NA	NA	NA
MW-49A	0.0	0.0	0.0	0.0	0.0	0.0	0.0	0.0	0.0	0.0	0.0	0.0	0.0	0.0	0.0	0.0
MW-49B	0.0	0.0	0.0	0.0	0.0	0.0	0.0	0.0	0.0	0.0	0.0	0.0	0.0	0.0	0.0	0.0
MW-49C	0.0	0.0	0.0	0.0	0.0	0.0	0.0	0.0	0.0	0.0	0.0	0.0	0.0	0.0	0.0	0.0
AS-SW	0.0	0.0	0.0	0.0	0.0	0.0	0.0	0.0	0.0	0.0	0.0	0.0	0.0	0.0	0.0	0.0
AS-SC	0.0	0.0	0.0	0.0	0.0	0.0	0.0	0.0	0.0	0.0	0.0	0.0	0.0	0.0	0.0	0.0
AS-NE	0.0	0.0	0.0	0.0	0.0	0.0	0.0	0.0	0.0	0.0	0.0	0.0	0.0	0.0	0.0	0.0

NA - Not Available

Measured in % Volume

Table 3 (continued)

Well	9/08	10/08	11/08	12/08	1/09	2/09	3/09	4/09	5/09	6/09	7/09	8/09	9/09	10/09	11/09	12/09
MW-7C	0.0	0.0	0.0	0.0	0.0	0.0	0.0	0.0	0.0	0.0	0.0	0.0	0.0	0.0	0.0	0.0
MW-8C	0.0	0.0	0.0	0.0	0.0	0.0	0.0	0.0	0.0	0.0	0.0	0.0	0.0	0.0	0.0	0.0
MW-9A	0.0	0.0	0.0	0.0	0.0	0.0	0.0	0.0	0.0	0.0	0.0	0.0	0.0	0.0	0.0	0.0
MW-9B	0.0	0.0	0.0	0.0	0.0	0.0	0.0	0.0	0.0	0.0	0.0	0.0	0.0	0.0	0.0	0.0
MW-9C	0.0	0.0	0.0	0.0	0.0	0.0	0.0	0.0	0.0	0.0	0.0	0.0	0.0	0.0	0.0	0.0
MW-11A	0.0	0.0	0.0	0.0	0.0	0.0	0.0	0.0	0.0	0.0	0.0	0.0	0.0	0.0	0.0	0.0
MW-12A	0.0	0.0	0.0	0.0	0.0	0.0	0.0	0.0	0.0	0.0	0.0	0.0	0.0	0.0	0.0	0.0
MW-12C	0.0	0.0	0.0	0.0	0.0	0.0	0.0	0.0	0.0	0.0	0.0	0.0	0.0	0.0	0.0	0.0
MW-18A	0.0	0.0	0.0	0.0	0.0	0.0	0.0	0.0	0.0	0.0	0.0	0.0	0.0	0.0	0.0	0.0
MW-19A	0.0	0.0	0.0	0.0	0.0	0.0	0.0	0.0	0.0	0.0	0.0	0.0	0.0	0.0	0.0	0.0
MW-24C	0.0	0.0	0.0	0.0	0.0	0.0	0.0	0.0	0.0	0.0	0.0	0.0	0.0	0.0	0.0	0.0
MW-38B	0.0	0.0	0.0	0.0	0.0	0.0	0.0	0.0	0.0	0.0	0.0	0.0	0.0	0.0	0.0	0.0
MW-39A	NA	NA	NA	NA	NA	NA	NA	NA	NA	NA	NA	NA	NA	NA	NA	NA
MW-49A	0.0	0.0	0.0	0.0	0.0	0.0	0.0	0.0	0.0	0.0	0.0	0.0	0.0	0.0	0.0	0.0
MW-49B	0.0	0.0	0.0	0.0	0.0	0.0	0.0	0.0	0.0	0.0	0.0	0.0	0.0	0.0	0.0	0.0
MW-49C	0.0	0.0	0.0	0.0	0.0	0.0	0.0	0.0	0.0	0.0	0.0	0.0	0.0	0.0	0.0	0.0
AS-SW	0.0	0.0	0.0	0.0	0.0	0.0	0.0	0.0	0.0	0.0	0.0	0.0	0.0	0.0	0.0	0.0
AS-SC	0.0	0.0	0.0	0.0	0.0	0.0	0.0	0.0	0.0	0.0	0.0	0.0	0.0	0.0	0.0	0.0
AS-NE	0.0	0.0	0.0	0.0	0.0	0.0	0.0	0.0	0.0	0.0	0.0	0.0	0.0	0.0	0.0	0.0

NA - Not Available

Measured in % Volume

Table 3 (continued)

Well	1/10	2/10	3/10	4/10	5/10	6/10	7/10	8/10	9/10	10/10	11/10	1/12	2/12	3/12	4/12	5/12
MW-7C	0.0	0.0	0.0	0.0	0.0	0.0	0.0	0.0	0.0	0.0	0.0	0.0	0.0	0.0	0.0	0.0
MW-8C	0.0	0.0	0.0	0.0	0.0	0.0	0.0	0.0	0.0	0.0	0.0	0.0	0.0	0.0	0.0	0.0
MW-9A	0.0	0.0	0.0	0.0	0.0	0.0	0.0	0.0	0.0	0.0	0.0	0.0	0.0	0.0	0.0	0.0
MW-9B	0.0	0.0	0.0	0.0	0.0	0.0	0.0	0.0	0.0	0.0	0.0	0.0	0.0	0.0	0.0	0.0
MW-9C	0.0	0.0	0.0	0.0	0.0	0.0	0.0	0.0	0.0	0.0	0.0	0.0	0.0	0.0	0.0	0.0
MW-11A	0.0	0.0	0.0	0.0	0.0	0.0	0.0	0.0	0.0	0.0	0.0	0.0	0.0	0.0	0.0	0.0
MW-12A	0.0	0.0	0.0	0.0	0.0	0.0	0.0	0.0	0.0	0.0	0.0	0.0	0.0	0.0	0.0	0.0
MW-12C	0.0	0.0	0.0	0.0	0.0	0.0	0.0	0.0	0.0	0.0	0.0	0.0	0.0	0.0	0.0	0.0
MW-18A	0.0	0.0	0.0	0.0	0.0	0.0	0.0	0.0	0.0	0.0	0.0	0.0	0.0	0.0	0.0	0.0
MW-19A	0.0	0.0	0.0	0.0	0.0	0.0	0.0	0.0	0.0	0.0	0.0	0.0	0.0	0.0	0.0	0.0
MW-24C	0.0	0.0	0.0	0.0	0.0	0.0	0.0	0.0	0.0	0.0	0.0	0.0	0.0	0.0	0.0	0.0
MW-38B	0.0	0.0	0.0	0.0	0.0	0.0	0.0	0.0	0.0	0.0	0.0	0.0	0.0	0.0	0.0	0.0
MW-39A	NA	NA	NA	NA	NA	NA	NA	NA	NA	NA	NA	NA	NA	NA	NA	NA
MW-49A	0.0	0.0	0.0	0.0	0.0	0.0	0.0	0.0	0.0	0.0	0.0	0.0	0.0	0.0	0.0	0.0
MW-49B	0.0	0.0	0.0	0.0	0.0	0.0	0.0	0.0	0.0	0.0	0.0	0.0	0.0	0.0	0.0	0.0
MW-49C	0.0	0.0	0.0	0.0	0.0	0.0	0.0	0.0	0.0	0.0	0.0	0.0	0.0	0.0	0.0	0.0
AS-SW	0.0	0.0	0.0	0.0	0.0	0.0	0.0	0.0	0.0	0.0	0.0	0.0	0.0	0.0	0.0	0.0
AS-SC	0.0	0.0	0.0	0.0	0.0	0.0	0.0	0.0	0.0	0.0	0.0	0.0	0.0	0.0	0.0	0.0
AS-NE	0.0	0.0	0.0	0.0	0.0	0.0	0.0	0.0	0.0	0.0	0.0	0.0	0.0	0.0	0.0	0.0

NA - Not Available

Measured in % Volume

Table 3 (continued)

Well	6/12	7/12	8/12	9/12	10/12	11/12	12/12	1/13	2/13	3/13	4/13	5/13	6/13	7/13	8/13	9/13
MW-7C	0.0	0.0	0.0	0.0	NA	0.0	0.0	0.0	0.0	0.0	0.0	0.0	0.0	0.0	0.0	0.0
MW-8C	0.0	0.0	0.0	0.0	NA	0.0	0.0	0.0	0.0	0.0	0.0	0.0	0.0	0.0	0.0	0.0
MW-9A	0.0	0.0	0.0	0.0	NA	0.0	0.0	0.0	0.0	0.0	0.0	0.0	0.0	0.0	0.0	0.0
MW-9B	0.0	0.0	0.0	0.0	NA	0.0	0.0	0.0	0.0	0.0	0.0	0.0	0.0	0.0	0.0	0.0
MW-9C	0.0	0.0	0.0	0.0	NA	0.0	0.0	0.0	0.0	0.0	0.0	0.0	0.0	0.0	0.0	0.0
MW-11A	0.0	0.0	0.0	0.0	NA	0.0	0.0	0.0	0.0	0.0	0.0	0.0	0.0	0.0	0.0	0.0
MW-12A	0.0	0.0	0.0	0.0	NA	0.0	0.0	0.0	0.0	0.0	0.0	0.0	0.0	0.0	0.0	0.0
MW-12C	0.0	0.0	0.0	0.0	NA	0.0	0.0	0.0	0.0	0.0	0.0	0.0	0.0	0.0	0.0	0.0
MW-18A	0.0	0.0	0.0	0.0	NA	0.0	0.0	0.0	0.0	0.0	0.0	0.0	0.0	0.0	0.0	0.0
MW-19A	0.0	0.0	0.0	0.0	NA	0.0	0.0	0.0	0.0	0.0	0.0	0.0	0.0	0.0	0.0	0.0
MW-24C	0.0	0.0	0.0	0.0	NA	0.0	0.0	0.0	0.0	0.0	0.0	0.0	0.0	0.0	0.0	0.0
MW-38B	0.0	0.0	0.0	0.0	NA	0.0	0.0	0.0	0.0	0.0	0.0	0.0	0.0	0.0	0.0	0.0
MW-39A	NA	NA	NA	NA	NA	NA	NA	NA	NA	NA	NA	NA	NA	NA	NA	NA
MW-49A	0.0	0.0	0.0	0.0	NA	0.0	0.0	0.0	0.0	0.0	0.0	0.0	0.0	0.0	0.0	0.0
MW-49B	0.0	0.0	0.0	0.0	NA	0.0	0.0	0.0	0.0	0.0	0.0	0.0	0.0	0.0	0.0	0.0
MW-49C	0.0	0.0	0.0	0.0	NA	0.0	0.0	0.0	0.0	0.0	0.0	0.0	0.0	0.0	0.0	0.0
AS-SW	0.0	0.0	0.0	0.0	NA	0.0	0.0	0.0	0.0	0.0	0.0	0.0	0.0	0.0	0.0	0.0
AS-SC	0.0	0.0	0.0	0.0	NA	0.0	0.0	0.0	0.0	0.0	0.0	0.0	0.0	0.0	0.0	0.0
AS-NE	0.0	0.0	0.0	0.0	NA	0.0	0.0	0.0	0.0	0.0	0.0	0.0	0.0	0.0	0.0	0.0

NA - Not Available

Measured in % Volume

Table 3 (continued)

Well	10/13	11/13	12/13	1/14	2/14	3/14	4/14	5/14	6/14	7/14	8/14	9/14	10/14	12/14	3/15	6/15
MW-7C	0.0	0.0	0.0	0.0	0.0	0.0	0.0	0.0	0.0	0.0	0.0	0.0	0.0	0.0	0.0	0.0
MW-8C	0.0	0.0	0.0	0.0	0.0	0.0	0.0	0.0	0.0	0.0	0.0	0.0	0.0	0.0	0.0	0.0
MW-9A	0.0	0.0	0.0	0.0	0.0	0.0	0.0	0.0	0.0	0.0	0.0	0.0	0.0	0.0	0.0	0.0
MW-9B	0.0	0.0	0.0	0.0	0.0	0.0	0.0	0.0	0.0	0.0	0.0	0.0	0.0	0.0	0.0	0.0
MW-9C	0.0	0.0	0.0	0.0	0.0	0.0	0.0	0.0	0.0	0.0	0.0	0.0	0.0	0.0	0.0	0.0
MW-11A	0.0	0.0	0.0	0.0	0.0	0.0	0.0	0.0	0.0	0.0	0.0	0.0	0.0	0.0	0.0	0.0
MW-12A	0.0	0.0	0.0	0.0	0.0	0.0	0.0	0.0	0.0	0.0	0.0	0.0	0.0	0.0	0.0	0.0
MW-12C	0.0	0.0	0.0	0.0	0.0	0.0	0.0	0.0	0.0	0.0	0.0	0.0	0.0	0.0	0.0	0.0
MW-18A	0.0	0.0	0.0	0.0	0.0	0.0	0.0	0.0	0.0	0.0	0.0	0.0	0.0	0.0	0.0	0.0
MW-19A	0.0	0.0	0.0	0.0	0.0	0.0	0.0	0.0	0.0	0.0	0.0	0.0	0.0	0.0	0.0	0.0
MW-24C	0.0	0.0	0.0	0.0	0.0	0.0	0.0	0.0	0.0	0.0	0.0	0.0	0.0	0.0	0.0	0.0
MW-38B	0.0	0.0	0.0	0.0	0.0	0.0	0.0	0.0	0.0	0.0	0.0	0.0	0.0	0.0	0.0	0.0
MW-39A	NA	NA	NA	NA	NA	NA	NA	NA	NA	NA	NA	NA	NA	NA	NA	NA
MW-49A	0.0	0.0	0.0	0.0	0.0	0.0	0.0	0.0	0.0	0.0	0.0	0.0	0.0	0.0	0.0	0.0
MW-49B	0.0	0.0	0.0	0.0	0.0	0.0	0.0	0.0	0.0	0.0	0.0	0.0	0.0	0.0	0.0	0.0
MW-49C	0.0	0.0	0.0	0.0	0.0	0.0	0.0	0.0	0.0	0.0	0.0	0.0	0.0	0.0	0.0	0.0
AS-SW	0.0	0.0	0.0	0.0	0.0	0.0	0.0	0.0	0.0	0.0	0.0	0.0	0.0	0.0	0.0	0.0
AS-SC	0.0	0.0	0.0	0.0	0.0	0.0	0.0	0.0	0.0	0.0	0.0	0.0	0.0	0.0	0.0	0.0
AS-NE	0.0	0.0	0.0	0.0	0.0	0.0	0.0	0.0	0.0	0.0	0.0	0.0	0.0	0.0	0.0	0.0

NA - Not Available

Measured in % Volume

Table 3 (continued)

Well	9/15	12/15	3/16	6/16	9/16	12/16	3/17	6/17	9/17	12/17	3/18	6/18	9/18	12/18	3/19	6/19
MW-7C	0.0	0.0	0.0	0.0	0.0	0.0	0.0	0.0	0.0	0.0	0.0	0.0	0.0	0.0	0.0	0.0
MW-8C	0.0	0.0	0.0	0.0	0.0	0.0	0.0	0.0	0.0	0.0	0.0	0.0	0.0	0.0	0.0	0.0
MW-9A	0.0	0.0	0.0	0.0	0.0	0.0	0.0	0.0	0.0	0.0	0.0	0.0	0.0	0.0	0.0	0.0
MW-9B	0.0	0.0	0.0	0.0	0.0	0.0	0.0	0.0	0.0	0.0	0.0	0.0	0.0	0.0	0.0	0.0
MW-9C	0.0	0.0	0.0	0.0	0.0	0.0	0.0	0.0	0.0	0.0	0.0	0.0	0.0	0.0	0.0	0.0
MW-11A	0.0	0.0	0.0	0.0	0.0	0.0	0.0	0.0	0.0	0.0	0.0	0.0	0.0	0.0	0.0	0.0
MW-12A	0.0	0.0	0.0	0.0	0.0	0.0	0.0	0.0	0.0	0.0	0.0	0.0	0.0	0.0	0.0	0.0
MW-12C	0.0	0.0	0.0	0.0	0.0	0.0	0.0	0.0	0.0	0.0	0.0	0.0	0.0	0.0	0.0	0.0
MW-18A	0.0	0.0	0.0	0.0	0.0	0.0	0.0	0.0	0.0	0.0	0.0	0.0	0.0	0.0	0.0	0.0
MW-19A	0.0	0.0	0.0	0.0	0.0	0.0	0.0	0.0	0.0	0.0	0.0	0.0	0.0	0.0	0.0	0.0
MW-24C	0.0	0.0	0.0	0.0	0.0	0.0	0.0	0.0	0.0	0.0	0.0	0.0	0.0	0.0	0.0	0.0
MW-38B	0.0	0.0	0.0	0.0	0.0	0.0	0.0	0.0	0.0	0.0	0.0	0.0	0.0	0.0	0.0	0.0
MW-39A	NA	NA	NA	NA	NA	NA	NA	NA	NA	NA	NA	NA	NA	NA	NA	NA
MW-49A	0.0	0.0	0.0	0.0	0.0	0.0	0.0	NA	NA	0.0	0.0	0.0	0.0	0.0	0.0	0.0
MW-49B	0.0	0.0	0.0	0.0	0.0	0.0	0.0	NA	NA	0.0	0.0	0.0	0.0	0.0	0.0	0.0
MW-49C	0.0	0.0	0.0	0.0	0.0	0.0	0.0	NA	NA	0.0	0.0	0.0	0.0	0.0	0.0	0.0
AS-SW	0.0	0.0	0.0	0.0	0.0	0.0	0.0	0.0	0.0	0.0	0.0	0.0	0.0	0.0	0.0	0.0
AS-SC	0.0	0.0	0.0	0.0	0.0	0.0	0.0	0.0	0.0	0.0	0.0	0.0	0.0	0.0	0.0	0.0
AS-NE	0.0	0.0	0.0	0.0	0.0	0.0	0.0	0.0	0.0	0.0	0.0	0.0	0.0	0.0	0.0	0.0

NA - Not Available

Measured in % Volume

Table 4
Landfill Gas Control Well Methane Data
Town of Huntington East Northport Landfill, East Northport, New York
for period of record between January, 2006 and June, 2019

Well	1/06	2/06	3/06	4/06	5/06	6/06	7/06	8/06	9/06	10/06	11/06	12/06	1/07	2/07	3/07	4/07
CWI-4	0.0	0.3	0.4	0.2	0.1	0.3	0.1	0.0	0.0	0.2	0.1	0.1	0.1	0.1	0.0	0.1
CWI-5	0.0	1.8	2.0	1.5	0.8	1.5	0.2	0.0	0.0	1.0	0.8	0.7	0.7	2.1	0.0	0.7
CWI-6	0.1	0.3	0.1	0.4	1.0	0.9	0.2	0.0	0.0	0.0	1.0	0.6	0.6	0.0	0.0	0.8
CWI-7	0.2	5.0	6.0	5.0	0.1	0.7	0.6	0.0	0.0	0.2	2.2	1.5	1.1	NA	0.1	2.0
CWII-1	0.4	5.0	6.0	2.7	1.6	2.4	2.6	7.0	0.0	0.3	4.0	4.0	3.8	5.0	5.0	3.8
CWII-2	0.2	4.5	4.2	3.4	2.7	1.9	1.0	2.2	0.0	3.0	1.6	1.6	1.6	1.2	1.7	1.7
CWII-3	0.2	2.3	2.1	0.9	1.8	1.5	1.5	1.7	0.0	0.2	0.0	0.7	1.1	1.1	1.3	NA
CWII-4	0.2	4.0	3.8	1.0	4.0	1.3	0.8	4.7	0.0	0.3	5.0	2.8	2.8	1.7	3.6	2.7
CWII-5	0.0	1.0	4.2	0.5	0.7	0.6	0.4	1.5	0.0	0.0	0.8	0.4	0.6	0.8	0.2	0.4
CWII-6	0.2	3.5	0.7	0.8	2.0	0.6	1.1	0.5	0.0	0.1	0.9	1.4	1.7	1.7	0.3	1.2
CWII-7	0.0	0.1	3.4	0.0	0.0	0.0	0.0	0.2	0.0	0.0	0.1	0.0	0.0	0.0	0.0	0.0
CWII-8	0.0	0.0	0.0	0.0	0.0	0.0	0.2	0.0	0.0	0.0	0.0	0.0	0.0	0.0	0.0	0.0
CWII-9	0.0	1.1	0.0	0.7	0.6	0.2	0.5	0.4	0.0	0.0	0.4	0.4	0.7	0.6	0.4	0.3
NW-1	0.0	0.0	1.0	0.8	0.0	0.0	0.0	0.0	0.0	0.0	0.0	0.0	0.0	0.0	0.0	0.0
NW-2	0.0	0.0	0.0	0.0	0.0	0.0	0.0	0.0	0.0	0.0	0.0	0.0	0.0	0.0	0.0	0.0
NW-3	0.0	0.0	0.0	0.0	0.0	0.0	0.0	0.0	0.0	0.0	0.0	0.0	0.0	0.0	0.0	0.0
NW-4	0.0	0.0	0.0	0.0	0.0	0.0	0.0	0.0	0.0	0.0	0.0	0.0	0.0	0.0	0.0	0.0
NW-5	0.0	0.0	0.0	0.0	0.0	0.0	0.0	0.0	0.0	0.0	0.0	0.0	0.0	0.0	0.0	0.0
NW-6	0.0	0.0	0.0	0.0	0.0	0.0	0.0	2.0	0.0	0.0	0.0	0.0	0.0	0.0	0.0	0.0
Ext-1	0.0	0.0	0.0	0.0	0.0	0.1	0.0	0.0	0.0	0.0	0.0	0.0	0.0	0.0	0.0	0.0
Ext-2	0.0	0.0	0.0	0.0	0.0	0.1	0.1	0.2	0.0	0.0	0.0	0.0	0.0	0.0	0.0	0.0
Ext-3	0.2	0.0	0.0	0.0	0.2	0.0	0.8	0.2	0.0	3.0	1.2	0.3	1.3	0.2	0.0	0.1
Ext-4	0.2	0.0	0.0	0.0	0.4	0.2	0.4	0.1	0.0	2.0	0.4	0.2	1.0	0.1	0.0	0.1
Ext-5	0.0	0.0	0.0	0.0	0.0	0.0	0.0	0.0	0.0	0.0	0.0	0.0	0.0	0.0	0.0	0.0
N-1	0.0	0.0	0.0	0.0	0.0	0.0	0.0	0.1	0.0	0.0	0.0	0.0	0.0	0.0	0.0	0.0
N-2	2.6	1.3	0.6	11.0	NA	0.0	4.8	0.0	0.8	4.4	3.0	0.5	0.2	0.0	3.1	4.0
N-3	0.0	0.0	0.0	0.0	0.0	0.0	0.0	0.0	0.0	0.0	0.0	0.0	0.0	0.0	0.0	0.0
N-4	0.0	0.0	0.0	0.0	0.0	0.0	0.0	0.0	0.0	0.0	0.0	0.0	0.0	0.0	0.0	0.0
N-5	0.0	0.0	0.0	0.2	0.0	0.0	0.0	0.0	0.0	0.0	0.0	0.0	0.0	0.0	0.0	0.0
N-6	NA	0.0	0.0	0.1	NA	0.7	0.1	0.1	0.0	0.0	NA	NA	NA	NA	NA	0.0
BS-1	0.1	0.0	0.6	0.9	0.7	0.4	0.4	0.0	0.1	0.9	0.7	0.5	0.5	0.6	0.1	0.5

NA - Not Available

Measured in % Volume

Table 4 (continued)

Well	5/07	6/07	7/07	8/07	9/07	10/07	11/07	12/07	1/08	2/08	3/08	4/08	5/08	6/08	7/08	8/08
CWI-4	0.2	0.2	0.2	0.1	0.1	0.0	0.0	0.0	0.0	0.1	0.1	0.1	0.0	0.1	0.1	0.1
CWI-5	0.8	0.9	0.8	0.7	0.8	0.8	0.0	0.7	0.5	0.5	2.5	0.4	0.2	0.3	0.4	0.0
CWI-6	0.7	1.1	1.3	0.8	1.0	0.8	0.1	0.5	0.6	0.9	0.5	0.4	0.3	0.5	0.7	0.3
CWI-7	2.3	2.4	2.3	2.0	3.0	2.6	0.2	2.0	2.2	2.1	1.3	1.1	0.9	1.2	1.3	0.5
CWII-1	4.6	9.0	8.0	5.0	5.0	1.3	5.0	7.0	7.0	10.0	4.0	3.3	2.2	3.8	3.8	1.0
CWII-2	1.9	2.3	2.0	1.5	1.8	6.0	1.4	1.0	1.1	1.2	0.7	0.9	0.6	0.7	0.9	2.5
CWII-3	NA	3.8	2.7	4.0	3.5	1.8	2.8	0.3	1.5	2.2	1.4	1.0	0.5	1.0	1.4	0.7
CWII-4	2.6	3.5	3.3	3.1	3.5	2.6	3.5	2.5	2.1	2.7	2.0	1.5	1.1	1.5	1.5	1.0
CWII-5	0.9	1.7	1.3	1.7	1.8	0.9	1.0	0.2	0.3	0.4	2.5	0.3	0.3	0.5	0.8	1.2
CWII-6	1.7	2.5	2.0	2.0	2.9	1.7	2.1	0.3	1.0	0.7	0.7	0.7	0.6	0.8	0.0	0.5
CWII-7	0.0	0.0	0.0	0.0	0.0	0.0	0.0	0.0	0.0	0.0	0.0	0.0	0.0	0.0	0.0	1.1
CWII-8	0.0	0.0	0.0	0.0	0.0	0.0	0.0	0.0	0.0	0.0	0.0	0.0	0.0	0.0	0.0	0.0
CWII-9	0.5	0.5	0.5	0.4	0.6	0.4	0.5	0.3	4.5	0.2	0.2	0.2	0.2	0.2	0.1	0.3
NW-1	0.0	0.0	0.0	0.0	0.0	0.0	0.0	0.0	0.0	0.0	0.0	0.0	0.0	0.0	0.1	0.0
NW-2	0.0	0.0	0.0	0.0	0.0	0.0	0.0	0.0	0.0	0.0	0.0	0.0	0.0	0.0	0.0	0.0
NW-3	0.0	9.0	0.0	0.0	0.0	0.0	0.0	0.0	0.0	0.0	0.0	0.0	0.0	0.0	0.0	0.0
NW-4	0.0	0.0	0.0	0.0	0.0	0.0	0.0	0.0	0.0	0.0	0.0	0.0	0.0	0.0	0.0	0.0
NW-5	0.0	0.0	0.0	0.0	0.0	0.0	0.0	0.0	0.0	0.0	0.0	0.0	0.0	0.0	0.0	0.0
NW-6	0.0	0.0	0.0	0.0	0.0	0.0	0.0	0.0	0.0	0.0	0.0	0.0	0.0	0.0	0.0	0.0
Ext-1	0.0	0.1	0.0	0.0	0.0	0.0	0.0	0.0	0.0	0.0	0.0	0.0	0.0	0.0	0.0	0.0
Ext-2	0.1	0.1	0.0	0.0	0.0	0.0	0.0	0.0	0.0	0.0	0.0	0.0	0.0	0.0	0.0	0.0
Ext-3	0.0	0.0	0.0	0.0	0.0	0.0	0.3	0.0	1.5	1.5	0.2	0.0	0.0	0.0	0.0	0.0
Ext-4	0.3	0.0	0.1	0.0	0.0	0.0	0.0	0.0	0.0	0.0	0.1	0.0	0.0	0.0	0.0	0.0
Ext-5	0.0	0.0	0.0	0.0	0.0	0.0	0.0	0.0	0.0	0.0	0.0	0.0	0.0	0.0	0.0	0.0
N-1	0.0	0.0	0.0	0.0	0.0	0.0	0.0	0.0	0.0	0.0	0.0	0.0	0.0	0.0	0.0	0.0
N-2	2.8	3.4	3.3	3.0	3.4	4.7	0.3	3.5	2.0	NA	1.5	2.8	2.2	2.4	2.3	2.2
N-3	0.0	0.0	0.0	0.0	0.0	0.0	0.0	0.0	0.0	0.0	0.0	0.0	0.0	0.0	0.0	0.0
N-4	0.0	0.0	0.0	0.0	0.0	0.0	0.0	0.0	0.0	0.0	0.0	0.0	0.0	0.0	0.0	0.0
N-5	0.0	0.0	0.0	0.0	0.0	0.0	0.0	2.0	0.0	0.0	0.0	0.0	0.0	0.0	0.0	0.0
N-6	0.0	0.0	0.0	0.0	0.0	2.0	NA	NA	NA	NA	NA	NA	NA	NA	NA	NA
BS-1	0.5	0.7	0.4	0.7	0.7	0.6	0.0	0.5	0.4	0.5	0.3	0.3	0.2	0.3	0.3	0.3

NA - Not Available

Measured in % Volume

Table 4 (continued)

Well	9/08	10/08	11/08	12/08	1/09	2/09	3/09	4/09	5/09	6/09	7/09	8/09	9/09	10/09	11/09	12/09
CWI-4	0.0	0.0	0.0	0.0	0.0	0.0	0.0	0.1	0.2	0.0	0.0	0.0	0.0	0.1	0.2	0.3
CWI-5	0.2	1.5	0.3	0.0	0.3	0.0	0.1	0.2	0.2	0.0	0.1	0.0	0.2	0.5	0.4	0.3
CWI-6	0.2	0.2	0.6	0.0	0.5	0.0	0.0	0.3	0.3	0.0	0.0	0.1	0.0	1.1	1.0	1.2
CWI-7	0.8	0.4	2.0	NA	0.6	0.0	0.3	1.0	1.2	0.0	0.1	0.1	0.1	NA	NA	NA
CWII-1	1.8	1.1	3.3	0.0	2.2	0.1	0.5	1.5	1.6	0.9	5.0	5.2	4.5	5.0	4.8	4.3
CWII-2	0.4	0.3	1.0	0.0	0.5	0.1	0.2	0.5	0.6	0.0	3.3	3.5	3.1	1.8	1.6	1.8
CWII-3	0.3	0.1	1.0	0.0	0.5	0.0	0.3	0.9	1.0	0.7	2.2	2.4	2.4	3.0	2.8	2.7
CWII-4	0.7	0.3	1.5	NA	0.1	0.1	0.5	1.6	1.4	0.8	1.5	1.7	1.8	2.0	1.6	1.9
CWII-5	0.2	0.0	0.4	0.0	0.1	0.0	0.1	0.1	0.0	0.2	0.2	0.1	1.2	1.1	1.0	1.7
CWII-6	0.6	0.8	1.0	NA	0.0	0.0	0.2	NA	NA	NA	NA	NA	0.8	NA	NA	NA
CWII-7	0.0	0.0	0.0	0.0	0.0	0.0	0.0	0.0	0.0	0.5	0.0	0.0	0.0	0.0	0.0	0.1
CWII-8	0.0	0.0	0.0	0.0	0.0	0.0	0.0	0.1	0.2	0.0	0.0	0.0	0.0	0.0	0.0	0.0
CWII-9	0.1	0.1	0.5	0.0	0.0	0.0	0.0	0.0	0.0	0.6	0.3	0.2	0.6	0.2	0.1	0.4
NW-1	0.0	0.0	0.0	0.0	0.0	0.0	0.0	0.0	0.0	0.0	0.0	0.0	0.0	0.0	0.0	NA
NW-2	0.0	0.0	0.0	0.0	0.0	0.0	0.0	0.0	0.0	0.0	0.0	0.0	0.0	0.0	0.0	0.0
NW-3	0.0	0.0	0.0	0.0	0.0	0.0	0.0	0.0	0.0	0.0	0.0	0.0	0.0	0.0	0.0	0.0
NW-4	0.0	0.0	0.0	0.0	0.0	0.0	0.0	0.0	0.0	0.0	0.0	0.0	0.0	0.0	0.0	0.0
NW-5	0.0	0.0	0.0	0.0	0.0	0.0	0.0	0.0	0.0	0.0	0.0	0.0	0.0	0.0	0.0	0.0
NW-6	0.0	0.0	0.0	0.0	0.0	0.0	0.0	0.0	0.0	0.0	0.0	0.0	0.0	0.0	0.0	NA
Ext-1	0.0	0.0	0.0	0.0	0.0	0.0	0.0	0.0	0.0	0.0	0.0	0.0	0.0	0.0	0.0	0.0
Ext-2	0.0	0.0	0.0	0.0	0.0	0.0	0.0	0.0	0.0	0.0	0.0	0.0	0.0	0.0	0.0	0.0
Ext-3	0.0	0.0	0.0	0.0	0.0	0.0	0.0	0.0	0.0	0.1	0.0	0.0	0.0	0.0	0.0	0.0
Ext-4	0.0	0.0	0.0	0.0	0.1	0.1	0.0	0.0	0.4	0.1	0.0	0.0	0.0	0.1	0.0	0.0
Ext-5	0.0	0.0	0.0	0.0	0.0	0.0	0.0	0.0	0.3	0.0	0.0	0.0	0.0	0.0	0.1	0.0
N-1	0.0	NA	NA	NA	NA	0.0	0.0	0.0	0.0	NA	0.0	0.0	0.0	0.0	NA	0.0
N-2	2.0	2.3	2.0	0.0	2.5	0.0	1.5	1.5	0.0	4.0	3.5	3.8	3.8	9.0	8.4	0.6
N-3	0.0	0.7	0.0	0.0	0.0	0.0	0.0	0.0	1.4	0.0	0.0	0.0	0.0	0.0	0.0	0.0
N-4	0.0	0.0	0.0	NA	0.0	0.0	0.0	0.0	0.0	0.0	0.0	0.0	0.0	0.0	0.0	0.1
N-5	0.0	0.0	0.0	NA	0.0	0.0	0.0	0.0	0.0	0.0	0.1	0.2	0.1	0.0	0.0	0.0
N-6	0.0	NA	NA	NA	0.0	0.0	0.0	0.0	0.0	0.0	0.0	0.0	0.0	NA	NA	0.0
BS-1	0.1	0.1	0.0	0.0	0.2	0.0	0.0	0.0	0.0	0.8	0.0	0.0	0.0	0.5	0.5	0.3

NA - Not Available

Measured in % Volume

Table 4 (continued)

Well	1/10	2/10	3/10	4/10	5/10	6/10	7/10	8/10	9/10	10/10	11/10	1/12	2/12	3/12	4/12	5/12
CWI-4	0.1	NA	0.0	0.1	0.5	0.1	0.0	0.1	0.1	0.0	0.0	0.1	0.0	0.0	0.1	0.2
CWI-5	1.0	1.0	0.8	0.2	0.3	1.0	0.0	0.7	0.5	0.2	0.2	1.0	0.3	0.4	0.9	0.0
CWI-6	NA	0.0	1.2	1.1	0.8	0.7	NA	0.6	0.8	0.6	0.2	0.7	0.0	0.0	0.7	0.2
CWI-7	NA	NA	NA	NA	NA	NA	NA	NA	NA	0.3	1.0	1.6	0.1	0.2	0.1	0.0
CWII-1	4.0	3.5	5.0	4.2	4.1	3.3	6.0	6.0	5.0	1.1	5.0	5.0	0.6	0.5	5.0	3.0
CWII-2	1.5	1.0	2.3	1.9	2.1	1.6	3.0	2.2	2.0	6.0	1.5	3.0	0.2	0.3	0.2	12.0
CWII-3	1.5	1.4	1.2	0.0	0.3	1.3	6.0	3.5	2.2	3.0	1.1	10.0	0.1	0.3	3.0	2.5
CWII-4	2.0	2.0	0.5	0.1	0.0	1.5	2.2	1.5	1.3	2.8	1.3	4.0	0.0	0.0	2.0	1.5
CWII-5	0.5	1.0	NA	0.1	0.1	1.0	2.1	1.6	1.5	1.5	0.7	0.7	0.0	0.0	1.5	0.0
CWII-6	NA	NA	NA	NA	NA	NA	NA	NA	NA	1.1	NA	0.0	N/A	N/A	NA	NA
CWII-7	0.1	0.0	0.0	0.1	0.1	0.0	0.0	0.0	0.1	0.0	0.1	0.1	0.0	0.0	0.1	0.0
CWII-8	0.1	0.0	0.0	0.0	0.5	0.1	0.4	0.0	0.0	0.0	0.0	0.0	0.0	0.0	0.0	0.1
CWII-9	0.2	0.1	0.0	0.1	0.1	0.2	0.0	0.5	0.5	0.4	0.4	0.1	0.0	0.0	0.6	0.3
NW-1	0.0	0.0	0.0	0.1	0.0	0.0	0.0	0.0	0.0	0.0	0.0	0.0	0.0	0.0	0.0	0.0
NW-2	0.0	0.0	0.0	0.1	0.0	0.0	0.0	0.0	0.0	0.0	0.0	0.0	0.0	0.0	0.0	0.0
NW-3	0.0	0.0	0.0	0.0	0.0	0.0	0.0	0.0	0.0	0.0	0.1	0.0	0.0	0.0	0.0	0.0
NW-4	0.0	0.0	0.0	0.1	0.2	0.0	0.0	0.0	0.0	0.0	0.1	0.0	0.0	0.0	0.0	0.0
NW-5	0.0	0.0	0.0	0.0	0.0	0.0	0.0	0.0	0.0	0.0	0.0	0.0	0.0	0.0	0.0	0.0
NW-6	0.0	0.0	0.0	0.0	0.0	0.0	0.0	0.0	0.0	0.0	0.0	0.0	0.0	0.0	0.0	0.0
Ext-1	0.0	0.0	0.0	0.0	0.0	0.0	0.0	0.0	0.0	0.0	0.0	0.0	0.0	0.0	0.0	0.0
Ext-2	0.0	0.0	0.0	0.0	0.0	0.0	0.0	0.0	0.0	0.0	0.1	0.0	0.0	0.0	0.1	0.0
Ext-3	0.1	0.4	0.2	0.0	0.0	0.2	0.0	0.4	0.4	0.4	0.5	1.5	0.0	0.0	0.1	0.0
Ext-4	0.1	0.4	0.0	0.0	0.1	0.0	0.0	0.0	0.0	0.0	0.1	0.3	0.0	0.0	0.3	0.0
Ext-5	0.1	0.3	0.0	0.0	0.0	0.0	0.0	0.0	0.0	0.0	0.2	0.2	0.0	0.0	0.1	0.0
N-1	0.0	0.0	NA	0.0	0.0	0.0	0.0	0.0	0.0	0.0	0.0	0.0	0.0	0.0	0.0	0.0
N-2	4.5	4.0	NA	0.0	1.6	0.0	0.0	0.0	4.0	4.2	3.5	0.0	N/A	0.2	0.0	0.0
N-3	0.0	0.0	0.0	0.0	0.0	0.0	0.0	0.0	0.0	0.0	0.0	0.0	0.0	0.0	0.0	0.0
N-4	0.0	NA	0.0	0.0	0.0	0.0	0.0	0.0	0.0	0.0	0.0	0.0	0.0	0.0	0.0	0.0
N-5	0.0	0.0	0.0	0.0	0.0	0.0	0.0	0.0	0.0	0.0	0.0	0.0	0.0	0.0	0.0	0.0
N-6	NA	NA	NA	NA	NA	NA	NA	NA	0.0	0.0	0.0	0.0	0.0	0.1	0.1	0.0
BS-1	0.4	0.3	0.0	0.0	0.1	0.1	0.0	0.2	0.5	0.2	0.4	1.0	0.0	0.7	0.6	0.5

NA - Not Available

Measured in % Volume

Table 4 (continued)

Well	6/12	7/12	8/12	9/12	10/12	11/12	12/12	1/13	2/13	3/13	4/13	5/13	6/13	7/13	8/13	9/13
CWI-4	0.1	0.1	0.0	0.0	NA	0.0	0.1	0.1	0.0	0.0	0.0	0.1	0.1	0.1	0.0	0.0
CWI-5	0.5	0.3	1.0	0.5	NA	0.5	0.4	0.4	0.4	0.4	0.2	0.3	0.5	0.5	0.0	0.0
CWI-6	1.0	0.6	0.7	0.8	NA	0.3	0.6	0.5	0.4	0.4	0.2	0.4	0.5	0.2	0.0	0.0
CWI-7	1.5	0.3	NA	NA	NA	0.8	0.7	1.0	1.0	1.3	0.0	1.0	1.2	0.6	0.1	0.0
CWII-1	4.6	4.0	8.0	9.0	NA	4.0	9.0	3.3	0.0	5.0	3.0	1.0	0.0	0.7	0.0	0.0
CWII-2	2.5	0.9	2.0	2.8	NA	1.0	1.0	10.0	0.8	1.6	0.6	0.6	1.2	0.2	0.0	0.0
CWII-3	4.2	2.0	3.0	3.0	NA	2.5	2.1	1.5	1.1	2.6	0.5	1.8	3.2	0.8	0.0	0.0
CWII-4	2.4	1.1	1.9	2.1	NA	2.0	2.4	1.8	2.0	2.5	1.0	1.3	NA	0.8	0.0	0.0
CWII-5	1.5	1.5	1.5	1.5	NA	0.5	1.0	0.2	0.1	0.1	0.1	2.0	1.2	1.0	0.2	0.0
CWII-6	NA	NA	NA	NA	NA	NA	NA	NA	NA	NA	NA	NA	NA	NA	NA	0.1
CWII-7	0.1	0.0	0.0	0.1	NA	0.0	0.1	0.1	0.0	0.0	0.0	0.0	0.0	0.0	0.0	0.0
CWII-8	0.0	0.0	0.0	0.0	NA	0.0	0.0	0.0	0.0	0.0	0.0	1.1	0.0	0.0	0.0	0.0
CWII-9	0.4	0.3	0.3	0.2	NA	0.0	0.3	0.3	0.0	0.0	0.0	0.3	0.5	0.2	0.0	0.0
NW-1	0.0	0.0	0.0	0.0	NA	0.0	0.0	0.0	0.0	0.0	0.0	0.0	0.0	0.0	0.0	0.0
NW-2	0.0	0.0	0.0	0.0	NA	0.0	0.0	0.0	0.0	0.0	0.0	0.0	0.0	0.0	0.0	0.0
NW-3	0.0	0.0	0.0	0.0	NA	0.0	0.0	0.0	0.0	0.0	0.0	0.0	0.0	0.0	0.0	0.0
NW-4	0.0	0.0	0.0	0.0	NA	0.0	0.0	0.0	0.0	0.0	0.0	0.0	0.0	0.0	0.0	0.0
NW-5	0.0	0.0	0.0	0.0	NA	0.0	0.0	0.0	0.0	0.0	0.0	0.0	0.0	0.0	0.0	0.0
NW-6	0.0	0.0	0.0	0.0	NA	0.0	0.0	0.0	0.0	0.0	0.0	0.0	0.0	0.0	0.0	0.0
Ext-1	0.0	0.0	0.0	0.0	NA	0.0	0.0	0.0	0.0	0.0	0.0	0.0	0.0	0.0	0.0	0.0
Ext-2	0.0	0.0	0.1	0.0	NA	0.0	0.0	0.0	0.0	0.1	0.0	0.0	0.0	0.0	0.0	0.0
Ext-3	0.9	0.0	0.5	0.7	NA	0.6	0.7	1.0	0.2	1.1	0.5	0.2	0.7	0.0	0.0	0.0
Ext-4	0.1	0.0	0.0	0.0	NA	0.2	0.2	0.2	0.0	0.3	0.2	0.0	0.2	0.0	0.0	0.0
Ext-5	0.0	0.0	0.0	0.0	NA	0.1	0.0	0.0	0.0	0.0	0.0	0.1	0.0	0.0	0.0	0.0
N-1	0.0	NA	NA	NA	NA	NA	NA	NA	NA	NA	NA	NA	NA	NA	NA	0.0
N-2	0.0	0.0	0.0	0.0	NA	0.0	0.0	0.0	0.0	0.0	0.0	0.0	0.0	0.0	0.0	0.0
N-3	0.0	0.0	0.0	0.0	NA	0.0	0.0	0.0	0.0	0.0	0.0	0.0	0.0	0.0	0.0	0.0
N-4	0.0	0.0	0.0	0.0	NA	0.0	0.0	0.0	NA	0.0	0.0	0.0	0.0	0.0	0.0	0.0
N-5	0.0	0.0	0.0	0.0	NA	0.0	NA	0.0	0.0	0.0	0.0	0.0	0.0	0.0	0.0	0.0
N-6	0.1	0.0	0.0	0.0	NA	NA	0.0	0.0	0.1	0.0	0.0	0.0	0.0	0.0	0.0	0.0
BS-1	0.7	0.2	0.5	0.5	NA	0.4	0.3	0.3	0.3	0.4	0.3	0.0	0.2	0.3	0.0	0.0

NA - Not Available

Measured in % Volume

Table 4 (continued)

Well	10/13	11/13	12/13	1/14	2/14	3/14	4/14	5/14	6/14	7/14	8/14	9/14	10/14	12/14	3/15	6/15
CWI-4	0.1	0.0	0.0	0.0	0.0	0.0	0.0	0.0	0.1	0.1	0.1	0.0	0.4	0.1	0.0	0.1
CWI-5	0.3	0.1	0.3	0.2	0.5	0.6	0.2	0.1	0.3	0.2	0.2	0.2	0.4	0.6	0.3	0.4
CWI-6	0.2	0.3	0.2	0.1	0.2	0.4	0.0	0.3	0.3	0.3	0.2	0.1	0.2	0.7	0.3	0.6
CWI-7	0.5	0.5	0.3	0.2	0.3	0.4	0.3	0.5	0.6	0.7	0.7	0.6	N/A	1.0	1.0	0.5
CWII-1	3.5	3.8	5.0	3.1	2.5	2.8	3.4	3.5	4.0	3.0	3.5	2.2	2.5	4.4	4.0	1.1
CWII-2	0.7	1.0	1.0	0.7	1.2	1.8	0.5	1.0	1.2	1.1	0.8	0.4	0.6	1.4	2.0	2.0
CWII-3	1.7	1.5	1.7	1.0	2.0	2.1	1.3	2.0	2.5	1.7	2.2	0.5	1.1	2.2	1.5	3.1
CWII-4	1.1	1.0	2.3	1.5	0.0	0.0	1.5	1.4	1.0	2.0	1.5	0.7	1.0	1.5	0.5	3.3
CWII-5	0.3	0.2	0.1	0.0	0.0	0.0	0.1	0.4	0.5	1.2	0.5	0.2	1.3	0.2	0.1	0.3
CWII-6	0.7	0.6	N/A	N/A	N/A	N/A	N/A	N/A	N/A	N/A	N/A	N/A	N/A	N/A	0.1	NA
CWII-7	0.1	0.1	0.1	0.0	0.0	0.0	0.0	0.0	0.0	0.1	0.0	0.0	0.2	0.1	0.2	0.1
CWII-8	0.0	0.0	0.0	0.0	0.0	0.0	0.0	0.0	0.0	0.0	0.0	0.0	0.2	0.1	1.0	0.0
CWII-9	0.2	0.2	0.1	0.0	0.0	0.0	0.1	0.2	0.2	0.4	0.3	0.2	0.3	0.1	0.7	0.2
NW-1	0.0	0.0	0.0	0.0	0.0	0.0	0.0	0.0	0.0	0.0	0.0	0.0	0.0	0.0	0.0	0.0
NW-2	0.0	0.0	0.0	0.0	0.0	0.0	0.0	0.0	0.0	0.0	0.0	0.0	0.0	0.0	0.0	0.0
NW-3	0.0	0.0	0.0	0.0	0.0	0.0	0.0	0.0	0.0	0.0	0.0	0.0	0.0	0.0	0.0	0.0
NW-4	0.0	0.0	0.0	0.0	0.0	0.0	0.0	0.0	0.0	0.0	0.0	0.0	0.0	0.0	0.0	0.0
NW-5	0.0	0.0	0.0	0.0	0.0	0.0	0.0	0.0	0.0	0.0	0.0	0.0	0.0	0.0	0.0	0.0
NW-6	0.0	0.0	0.0	0.2	0.0	0.0	0.0	0.0	0.0	0.0	0.0	0.0	0.0	0.0	0.0	0.0
Ext-1	0.0	0.0	0.0	0.1	0.0	0.0	0.0	0.0	0.0	0.0	0.0	0.0	0.0	0.0	0.0	0.0
Ext-2	0.1	0.0	0.0	0.1	0.0	0.0	0.0	0.0	0.1	0.1	0.0	0.0	0.1	0.4	0.2	0.2
Ext-3	1.0	0.1	0.7	0.0	0.1	0.2	0.5	0.7	0.5	0.1	0.1	0.0	0.0	0.2	0.2	1.7
Ext-4	0.2	0.2	0.2	0.1	0.0	0.0	0.2	0.2	0.1	0.0	0.0	0.1	0.0	0.2	0.0	0.0
Ext-5	0.1	0.1	0.0	0.0	0.0	0.0	0.0	0.0	0.0	0.0	0.0	0.0	0.0	0.0	0.0	0.0
N-1	0.0	0.0	N/A	N/A	N/A	N/A	N/A	N/A	N/A	N/A	N/A	N/A	N/A	N/A	0.0	NA
N-2	0.0	0.0	0.1	0.0	0.0	0.0	0.0	0.0	0.0	0.0	0.0	0.0	0.0	0.0	0.1	0.0
N-3	0.0	0.0	0.0	0.0	0.0	0.0	0.0	0.0	0.0	0.0	0.0	0.0	0.0	0.0	0.0	0.0
N-4	0.0	0.0	0.0	0.0	N/A	0.0	0.0	0.0	0.0	0.0	0.0	0.0	0.0	0.0	0.0	0.0
N-5	0.0	0.0	0.0	0.0	0.0	0.0	0.0	0.0	0.0	0.0	0.0	0.0	0.0	0.0	0.1	0.0
N-6	0.2	0.1	0.1	0.0	N/A	0.0	0.0	0.0	0.0	0.0	0.0	0.0	0.0	0.0	0.1	0.1
BS-1	0.2	0.2	0.4	0.2	0.3	0.1	0.2	0.3	0.2	0.4	0.3	0.2	0.3	0.2	0.0	0.5

NA - Not Available

Measured in % Volume

Table 4 (continued)

Well	9/15	12/15	3/16	6/16	9/16	12/16	3/17	6/17	9/17	12/17	3/18	6/18	9/18	12/18	3/19	6/19
CWI-4	0.2	0.1	0.0	0.0	0.0	0.0	0.0	0.1	0.0	0.0	0.0	0.0	0.0	0.0	0.0	0.0
CWI-5	0.4	0.5	0.3	0.3	0.1	0.0	0.0	0.2	0.4	0.1	0.0	0.0	0.2	0.0	0.0	0.0
CWI-6	0.3	NA	0.6	0.8	0.4	0.0	0.1	0.3	0.4	0.2	0.2	0.1	0.1	0.0	0.0	0.3
CWI-7	0.6	0.7	0.3	0.7	1.1	0.8	0.3	0.5	0.4	0.1	0.6	0.3	0.3	0.0	0.0	0.4
CWII-1	3.7	3.0	5.2	2.5	3.2	3.0	2.1	1.5	2.0	1.4	1.5	1.4	1.5	0.0	0.0	1.4
CWII-2	0.8	0.6	3.5	0.2	0.0	0.2	0.1	0.1	0.4	0.4	1.0	0.6	0.8	0.0	0.0	0.3
CWII-3	1.6	2.0	4.0	1.1	2.0	3.0	3.6	2.1	2.5	2.0	1.9	2.9	3.1	0.0	0.0	1.3
CWII-4	1.0	4.5	2.5	1.0	1.1	0.0	1.2	1.0	1.2	1.0	0.5	1.0	1.0	0.0	0.0	0.9
CWII-5	0.4	0.2	0.1	0.2	0.2	0.0	0.0	0.1	0.3	0.0	0.0	0.0	0.0	0.0	0.0	0.1
CWII-6	0.7	0.0	0.0	0.2	0.0	0.0	0.0	0.1	NA	NA	NA	NA	NA	NA	NA	NA
CWII-7	0.1	0.0	0.0	NA	0.0	0.0	0.0	0.0	0.0	0.0	0.0	0.0	NA	NA	0.0	0.9
CWII-8	0.0	0.1	0.0	0.0	0.0	0.0	0.0	0.0	0.0	0.0	0.0	0.0	0.0	0.0	0.0	0.0
CWII-9	0.2	0.0	0.0	0.1	0.1	0.0	0.0	0.0	0.2	0.0	0.0	0.0	0.0	0.0	0.0	0.0
NW-1	0.0	0.0	0.0	0.0	0.0	0.0	0.0	0.0	0.0	0.0	0.0	0.0	0.0	0.0	0.0	0.0
NW-2	0.0	0.0	0.0	0.0	0.0	0.0	0.0	0.0	0.0	0.0	0.0	0.0	0.0	0.0	0.0	0.0
NW-3	0.0	0.0	0.0	0.0	0.0	0.0	0.0	0.0	0.0	0.0	0.0	0.0	0.0	0.0	0.0	0.0
NW-4	0.0	0.0	0.0	0.0	0.0	0.0	0.0	0.0	0.0	0.0	0.0	0.0	0.0	0.0	0.0	0.0
NW-5	0.0	0.0	0.0	0.0	0.0	0.0	0.0	0.0	0.0	0.0	0.0	0.0	0.0	0.0	0.0	0.0
NW-6	0.0	0.0	0.0	0.0	0.0	0.0	0.0	0.0	0.0	0.0	0.0	0.0	0.0	0.0	0.0	0.0
Ext-1	0.1	0.1	0.0	0.0	0.0	0.0	0.0	0.0	NA	0.0	0.0	0.0	0.0	0.0	0.0	0.0
Ext-2	0.1	0.2	0.1	0.1	0.0	0.0	0.1	0.0	NA	0.0	0.0	0.0	0.0	0.0	0.0	0.0
Ext-3	1.2	2.0	0.2	0.1	0.4	0.3	0.5	0.0	NA	0.0	0.0	0.0	0.0	0.0	0.0	0.0
Ext-4	0.1	0.4	0.3	0.2	0.1	0.0	0.1	0.0	0.1	0.0	0.0	0.0	0.0	0.0	0.0	0.0
Ext-5	0.1	0.1	0.1	0.0	0.1	0.1	0.0	0.1	0.0	0.0	0.0	0.0	0.0	0.0	0.0	0.0
N-1	0.0	0.0	0.0	0.0	0.0	NA	NA	NA	NA	0.0	NA	NA	NA	0.0	0.0	NA
N-2	0.0	0.0	0.0	0.0	0.0	0.0	0.0	0.0	0.0	0.0	0.0	0.0	NA	0.0	0.0	0.0
N-3	0.0	0.0	0.0	0.0	0.0	NA	0.0	0.0	0.0	0.0	0.0	0.0	0.0	0.0	0.0	0.0
N-4	0.0	0.0	0.0	0.0	0.0	0.0	0.0	0.0	0.0	0.0	0.0	0.0	0.0	0.0	0.0	0.0
N-5	0.0	0.0	0.0	0.0	0.0	0.0	0.0	0.0	0.1	0.0	0.0	0.0	0.1	0.0	0.0	0.0
N-6	0.0	0.0	0.0	0.0	0.0	0.0	0.0	0.0	0.05	0.0	0.0	0.0	0.00	0.0	0.0	0.0
BS-1	0.7	0.5	0.5	0.2	0.1	0.0	0.0	0.0	0.1	0.0	0.0	0.0	0.0	0.0	0.0	0.0

NA - Not Available

Measured in % Volume

APPENDIX 1

Landfill Gas Control Well Vacuum Data
East Northport Landfill, East Northport, New York
for period of record between January, 2006 and June, 2019

Well	1/06	2/06	3/06	4/06	5/06	6/06	7/06	8/06	9/06	10/06	11/06	12/06	1/07	2/07	3/07	4/07	5/07	6/07	7/07
CWI-4	-2.9	-2.6	-2.6	-3.0	-2.6	-0.1	-3.3	-5.2	-1.2	-2.8	-3.9	-4.2	-3.0	-3.6	-3.0	-3.0	-2.8	-2.8	-2.6
CWI-5	-3.3	-3.1	-3.2	-2.6	-2.8	0.0	-2.8	-1.9	-3.4	-2.3	-4.4	-4.5	-3.4	-3.6	-3.2	-3.2	-2.9	-2.9	-2.7
CWI-6	-3.5	-3.1	-3.0	-3.0	-2.9	-0.3	-4.0	-6.4	-2.9	-2.9	-4.7	-4.3	-3.5	-3.7	-3.2	-3.2	-3.0	-2.9	-2.7
CWI-7	-3.0	-3.0	-2.8	-2.8	-2.8	-0.4	-2.8	-2.4	-3.1	-2.8	-4.5	-4.1	-3.3	NA	-3.0	-2.9	-2.8	-2.7	-2.5
CWII-1	-3.1	-3.0	-3.0	-2.9	-2.7	0.0	-3.2	-6.3	-2.9	-2.6	-4.3	-4.3	-3.4	-3.4	-2.7	-3.0	-2.7	-2.6	-2.5
CWII-2	-3.0	-2.9	-2.7	-2.8	-2.7	-0.5	-3.5	-5.9	-5.4	-2.6	-4.2	-3.9	-3.3	-3.4	-2.6	-2.8	-2.6	-2.5	-2.4
CWII-3	-3.0	-2.9	-2.9	-2.7	-2.5	0.0	-2.6	-6.8	-0.6	-2.7	-4.3	-4.1	-3.1	-3.4	-2.7	NA	NA	-2.6	-2.4
CWII-4	-2.8	-2.8	-2.4	-2.6	-2.7	-0.9	-3.2	-6.8	-2.7	-2.6	-5.0	-4.0	-3.1	-3.7	-2.7	-2.6	-2.5	-2.5	-2.3
CWII-5	-2.8	-2.5	-2.6	-2.7	-2.1	0.0	-2.3	-7.0	-2.6	-2.6	-0.3	-4.2	-3.2	-3.6	-2.6	-2.7	-2.5	-2.4	-2.3
CWII-6	-1.4	-1.4	-1.5	-1.6	-1.9	-0.1	-1.0	-0.2	-1.7	-1.4	-1.7	-2.3	-2.0	-0.2	-1.7	-1.6	-1.7	-1.7	-1.6
CWII-7	-1.2	-1.0	-1.1	-0.7	-1.4	-0.2	-0.8	-0.2	-1.3	-1.1	-1.5	-1.7	-1.7	-1.3	-1.4	-1.4	-1.2	-1.3	-1.1
CWII-8	0.0	0.0	-0.2	0.0	0.0	-0.1	0.0	0.0	0.0	0.0	0.0	0.0	-0.1	-0.1	0.0	-0.1	-0.1	-0.1	0.0
CWII-9	-0.9	-0.6	-0.7	-1.0	-0.8	-0.9	-0.6	-0.2	-0.9	-0.8	-0.9	-1.2	-1.4	-1.0	-1.0	-1.1	-0.9	-0.9	-0.8
NW-1	-2.8	-2.8	-2.8	-2.6	-2.2	-2.4	-3.2	-4.0	-3.7	-2.5	-3.2	-3.9	-2.9	-3.4	-3.0	-2.9	-2.8	-2.6	-2.1
NW-2	-3.3	-2.9	-2.7	-2.6	-2.9	-2.7	-3.4	-4.5	-3.4	-3.2	4.2	-4.5	-3.3	-3.7	-3.2	-3.2	-3.1	-3.9	-2.8
NW-3	-2.8	-2.9	-2.8	-2.7	-2.7	-2.8	-3.2	-4.0	-3.2	-2.8	-4.0	-4.0	-2.3	-3.4	-2.9	-3.0	-2.7	-2.6	-2.6
NW-4	-2.9	-3.0	-3.0	-3.0	-2.7	-2.6	-2.4	-3.6	-2.8	-2.6	-4.0	-3.6	-2.8	-3.3	-2.6	-2.9	-2.6	-2.4	-2.4
NW-5	-2.3	-2.9	-2.6	-2.6	-1.2	-2.5	-2.2	-2.6	-2.3	-2.1	-3.6	-2.9	-2.3	-3.0	-2.2	-2.6	-2.2	-1.9	-2.1
NW-6	-2.2	-3.0	-2.9	-3.0	-1.6	-2.1	-2.8	-2.8	-2.5	-2.8	-3.1	-3.0	-2.3	-2.6	-2.3	-1.6	-2.3	-2.1	-2.0
Ext-1	0.0	0.0	0.0	-0.2	-0.2	-0.3	0.0	-0.7	-0.1	-0.1	-3.6	-3.4	-2.7	-0.1	0.0	0.0	0.0	-1.7	-0.1
Ext-2	-0.6	-0.8	-0.9	-0.8	-0.8	-0.6	-0.1	-3.0	-0.9	-0.7	-3.4	NA	-2.1	-1.1	-0.8	-0.9	-0.9	-2.1	-0.9
Ext-3	-2.1	-2.8	-2.7	-2.6	-2.2	-1.9	-0.5	-3.3	-2.3	-2.1	-3.3	-3.2	-2.3	-2.9	-2.2	-2.5	-2.3	-2.3	-2.1
Ext-4	-2.0	-1.9	-1.8	-1.6	-2.1	-2.0	-0.6	-2.0	-2.0	-2.1	-3.2	-3.5	-2.0	-2.7	-2.2	-2.3	-2.1	-0.9	-2.0
Ext-5	-0.8	-1.6	-1.4	-1.6	-1.7	-1.5	-0.2	-0.1	-1.6	-1.6	-2.4	-2.6	-2.0	-2.3	-2.0	-2.1	-1.9	-0.1	-1.7
N-1	-0.3	-0.2	-0.4	-0.4	-0.6	0.0	-1.0	-2.8	-1.5	-0.2	-0.2	-0.2	0.0	0.1	0.0	-0.2	-0.1	0.0	-0.1
N-2	-0.4	-0.4	-0.8	-0.7	NA	0.0	-0.1	-0.9	-0.3	-0.6	-0.5	-0.4	-0.3	-0.4	-0.4	-0.6	-0.3	-0.3	-0.5
N-3	-0.1	-0.1	0.0	-0.2	-0.1	-0.1	0.0	-0.3	-0.1	-0.1	-0.1	-0.2	0.0	0.0	-0.1	-0.1	-0.1	-0.1	-0.1
N-4	0.0	0.0	0.0	-0.1	-0.1	-0.1	0.0	-0.2	-0.1	-0.2	-0.1	-0.1	0.0	-0.2	-0.8	-0.1	-0.1	0.0	-0.1
N-5	-0.1	-0.1	0.0	-1.0	-0.1	-0.1	-0.1	-0.2	-0.2	-0.1	-0.1	-0.2	0.0	-0.2	-0.1	-0.1	-0.1	-0.1	-0.1
N-6	NA	-0.8	-0.1	-0.2	NA	0.0	-1.1	-0.2	-0.9	-1.0	NA	NA	NA	NA	NA	-1.1	-0.8	-0.9	-0.9
BS-1	-4.9	-4.2	-5.1	-4.6	-4.6	-3.1	-8.5	-10.1	-6.1	-5.1	-7.3	-7.2	4.0	-5.6	-5.0	-5.1	-4.8	-7.3	-4.3

Measured in inches of H2O

NA - Not Available

Landfill Gas Control Well Vacuum Data
East Northport Landfill, East Northport, New York
for period of record between January, 2006 and June, 2019

Well	8/07	9/07	10/07	11/07	12/07	1/08	2/08	3/08	4/08	5/08	6/08	7/08	8/08	9/08	10/08	11/08	12/08	1/09	2/09
CWI-4	-2.6	-2.5	-2.5	-3.1	-3.0	-2.9	-3.7	-3.7	-1.8	-3.4	-1.8	-2.1	-1.6	-1.9	-1.2	-1.4	0.0	-3.0	-2.8
CWI-5	-2.7	-2.8	-2.7	-3.0	-3.5	-3.1	-3.7	-3.5	-3.0	-2.9	-1.8	-2.3	-1.9	-2.1	-1.3	-1.4	0.0	-3.4	-2.8
CWI-6	-2.6	-2.2	-2.4	-2.9	-3.4	-3.2	-3.3	-3.4	-3.1	-2.9	-1.9	-2.4	-1.8	-2.1	-1.3	-1.2	-0.1	-3.6	-3.0
CWI-7	-2.5	-2.5	-2.4	-2.5	-3.1	-3.0	-3.7	-3.3	-2.7	-2.3	-1.8	-2.4	-1.8	-2.0	-1.1	-0.6	NA	-3.6	-2.9
CWII-1	-2.3	-1.5	-2.4	-2.4	-3.0	-2.9	-4.1	-3.2	-2.6	-2.6	-1.7	-2.4	-1.7	-2.0	-1.2	-1.1	-0.1	-3.5	-2.9
CWII-2	-2.3	-2.3	-2.4	-2.5	-3.5	-2.9	-3.2	-3.6	-2.6	-2.5	-1.6	-2.4	-1.7	-2.0	-1.2	-1.6	-0.1	-3.0	-2.8
CWII-3	-2.3	-2.4	-2.3	-2.4	-2.9	-2.9	-3.7	-3.1	-3.1	-2.3	-1.7	-2.7	-1.6	-2.0	-1.1	-0.9	-0.1	-3.6	-2.7
CWII-4	-3.2	-2.1	-2.2	-2.3	-3.6	-2.9	-1.8	-3.5	-2.5	-2.1	-1.6	-2.4	-1.6	-1.9	-1.1	-1.1	NA	-3.4	-2.7
CWII-5	-2.2	-2.4	-2.2	-2.6	-3.5	-2.9	-3.0	-3.1	-2.8	-2.4	-1.6	-2.5	-1.6	-1.9	-1.1	-1.0	-0.2	-3.5	-2.7
CWII-6	-1.6	-1.5	-1.5	-1.3	-0.2	-2.0	-1.2	-2.2	-1.6	-1.7	-1.2	0.0	-1.6	-1.6	-0.7	-0.8	NA	0.0	-1.6
CWII-7	-1.2	-1.1	-1.2	-1.1	-0.3	-1.5	-1.2	-1.7	-1.2	-1.3	-0.9	0.0	-1.2	-1.1	-0.7	-0.6	-0.2	0.0	-1.2
CWII-8	0.0	0.0	-0.1	0.0	0.0	0.0	-0.1	0.0	0.0	-0.1	-0.1	-0.1	0.0	0.0	-0.1	0.0	-0.1	0.0	0.0
CWII-9	-0.2	-0.9	-0.9	-0.9	-0.6	-1.1	-0.2	-0.2	-0.9	-0.9	-0.6	0.0	-0.6	-0.8	-0.6	-0.5	-0.2	0.0	-0.9
NW-1	-2.6	-2.4	-2.5	-2.5	-2.9	-2.8	-3.0	-3.1	-2.7	-2.8	-1.6	-1.9	-1.8	-1.9	-1.1	-1.2	-1.6	-2.9	-2.6
NW-2	-2.8	-1.7	-2.9	-3.1	-3.3	-3.1	-3.4	-3.8	-2.9	-3.2	-2.1	-2.4	-1.7	-2.0	-1.1	-0.8	-1.4	-3.1	-3.4
NW-3	-2.5	-2.0	-2.4	-2.5	-2.8	-2.7	-4.3	-3.1	-2.7	-2.1	-1.8	-2.1	-1.3	-1.8	-1.1	-0.7	-1.0	-2.7	-2.7
NW-4	-2.2	-2.2	-2.3	-2.2	-2.6	-2.4	-3.4	-2.8	-3.1	-2.9	-1.6	-1.9	-1.5	-1.7	-1.0	-1.0	-0.9	-2.3	-2.4
NW-5	-1.8	-1.8	-1.9	-2.0	-2.1	-2.1	-2.5	-2.2	-2.2	-0.9	-1.4	-1.6	-1.2	-1.5	-0.8	-0.6	-1.2	-2.1	-2.0
NW-6	-1.8	-1.8	-1.9	-2.2	-2.2	-2.1	-2.4	-2.4	-2.1	-2.1	-1.3	-1.6	-1.2	-1.4	-0.9	-0.7	-1.3	-2.3	-2.0
Ext-1	-0.1	0.0	0.0	-0.1	-0.1	-2.1	-0.1	-0.1	0.0	-0.1	0.0	-0.1	-1.1	0.0	0.0	-0.1	-0.4	0.0	-0.1
Ext-2	-0.7	-0.8	-0.7	-0.7	-0.9	-0.9	-1.0	-1.0	-0.9	-2.2	-0.9	-0.7	-1.0	-0.5	-0.5	-0.4	-0.7	-0.9	-0.8
Ext-3	-2.1	-2.0	-1.9	-1.9	-2.3	-2.2	-2.6	-2.7	-2.2	-2.2	-1.6	-1.7	-0.6	-1.4	-0.9	-0.7	-0.3	-2.1	-2.0
Ext-4	-1.9	-1.9	-2.2	-1.9	-2.2	-2.1	-2.4	-2.3	-1.9	-2.0	-1.4	-1.1	-1.7	-1.5	-0.9	-0.6	-1.1	-2.0	-1.8
Ext-5	-1.6	-1.5	-1.7	-1.5	-1.9	-1.8	-2.0	-2.1	-1.8	-1.8	-1.1	-0.4	-0.9	-1.2	-0.8	-1.0	-1.4	-1.8	-1.5
N-1	-0.3	-0.2	-0.2	-0.2	-0.2	-0.1	-0.3	-0.2	-0.2	-0.1	-0.3	-0.2	-0.2	-0.2	NA	NA	NA	NA	-0.2
N-2	-0.6	-0.5	-0.7	-0.6	-0.6	-0.6	NA	-0.4	-0.6	-0.7	-0.5	-0.5	-0.6	-0.5	-0.3	-0.5	-0.3	-0.7	-0.7
N-3	-0.2	-0.1	-0.2	0.0	-0.2	-0.1	-0.2	-0.1	-0.1	-0.1	-0.1	-0.3	-0.1	-0.1	-0.2	-0.1	-0.2	-0.2	-0.1
N-4	-0.1	-0.1	-0.1	0.0	-0.2	-0.1	-0.2	0.0	-0.1	-0.1	-0.1	-0.1	-0.1	-0.1	-0.2	-0.1	NA	-0.2	-0.1
N-5	-0.1	-0.1	-0.2	0.0	-0.1	-0.1	-0.1	-0.1	-0.1	-0.2	-0.2	-0.1	-0.2	-0.1	-0.2	-0.1	NA	-0.2	-0.1
N-6	-0.9	-0.8	-0.9	NA	NA	NA	NA	NA	NA	NA	NA	NA	NA	-0.8	NA	NA	NA	-0.1	-0.8
BS-1	-5.6	0.3	-4.4	-4.7	-5.1	-4.5	-5.0	-5.2	-4.2	-4.8	-2.8	-3.2	0.1	-3.0	-1.7	-21.7	0.1	-4.1	0.5

Measured in inches of H2O

NA - Not Available

Landfill Gas Control Well Vacuum Data
East Northport Landfill, East Northport, New York
for period of record between January, 2006 and June, 2019

Well	3/09	4/09	5/09	6/09	7/09	8/09	9/09	10/09	11/09	12/09	1/10	2/10	3/10	4/10	5/10	6/10	7/10	8/10	9/10
CWI-4	-2.5	-2.6	-2.6	-2.9	-2.5	-1.8	-2.3	-2.1	-2.0	-0.75	-0.73	NA	-0.98	-0.60	-0.63	-0.65	-0.76	-0.75	-0.76
CWI-5	-2.7	-1.9	-1.9	-3.3	-2.6	-2.6	-2.4	-2.3	-2.0	-8.60	-1.00	-0.78	-1.13	-0.64	-0.69	-0.70	-0.82	-0.82	-0.82
CWI-6	-2.8	-2.8	-2.8	-3.3	-2.5	-2.6	-2.4	-2.1	-1.8	-8.70	NA	-0.76	-1.18	-0.57	-0.68	-0.69	NA	-0.80	-0.82
CWI-7	-2.7	-2.0	-2.0	-3.4	-2.5	-2.4	-2.3	NA	NA	NA	NA	NA	NA	NA	NA	NA	NA	NA	NA
CWII-1	0.0	-2.7	-2.7	-3.2	-2.5	-2.3	-2.1	-2.0	-2.1	-2.00	-0.84	-0.71	-1.16	-0.59	-0.63	-0.62	-0.71	-0.67	-0.71
CWII-2	-2.5	-2.1	-2.1	-3.0	-2.9	-2.2	-2.1	-1.9	-2.0	-1.90	-0.81	-0.68	-1.12	-0.56	-0.59	-0.60	-0.69	-0.67	-0.70
CWII-3	-2.6	-3.0	-3.0	-3.0	-2.6	-2.4	-2.1	-1.9	-1.8	-1.90	-0.86	-0.69	-1.17	-0.58	-0.60	-0.61	-0.04	-0.69	-0.72
CWII-4	-2.6	-3.1	-3.1	-4.0	-2.6	-2.0	-2.1	-2.8	-2.5	-2.34	-0.84	-0.68	-0.12	-0.57	-0.58	-0.60	-0.68	-0.66	-0.70
CWII-5	-2.6	-2.5	-2.5	-3.4	-2.4	-2.2	-2.1	-1.8	-1.6	-1.81	-0.84	-0.68	NA	-0.57	-0.59	-0.61	-0.69	-0.67	-0.71
CWII-6	-1.9	NA	NA	NA	NA	NA	-1.3	NA	NA	NA	NA	NA	NA	NA	NA	NA	NA	NA	NA
CWII-7	-1.5	-2.2	-2.2	0.0	-1.4	-1.5	-1.2	-1.0	-1.0	-1.11	0.00	-0.35	-0.02	-0.32	-0.32	-0.35	-0.45	-0.43	-0.46
CWII-8	0.0	-0.2	-0.2	0.0	-0.1	-0.1	0.0	0.0	0.0	-0.20	0.00	0.00	0.00	0.00	0.00	-0.02	-0.30	0.00	-0.03
CWII-9	-1.0	-1.0	-1.0	-0.1	-1.0	-1.0	-0.9	-0.6	-0.3	-0.20	-0.03	0.00	-0.02	-2.20	-0.04	-0.26	0.00	-0.29	-0.10
NW-1	-2.3	-2.6	-2.6	-2.7	-2.3	-3.4	-2.0	-2.0	-1.8	NA	-0.73	-0.23	-0.97	-0.59	-0.63	-0.63	-0.76	-0.50	-0.75
NW-2	-2.7	-2.8	-2.8	-2.3	-2.6	-2.6	-2.4	-2.1	-2.0	-0.60	-0.80	-0.42	-1.08	-0.64	-0.70	-0.53	-0.53	-0.85	-0.83
NW-3	-2.3	-2.2	-2.2	-2.7	-2.3	-2.2	-2.2	0.0	0.0	0.00	-0.72	-0.40	-1.01	-0.58	-0.62	-0.53	-0.76	-0.77	-0.72
NW-4	-2.1	-2.2	-2.2	-2.5	-2.2	-2.1	-2.0	0.0	-0.1	-0.12	-0.65	-0.50	-0.89	-0.54	-0.55	-0.54	-0.68	-0.66	-0.64
NW-5	-1.8	-2.1	-2.1	-2.0	-1.8	-1.8	-1.6	0.0	-0.1	-0.70	-0.56	-0.51	-0.74	-0.43	-0.45	-0.50	-0.55	-0.56	-0.52
NW-6	-1.8	-1.2	-1.2	-2.1	-1.8	-1.9	-1.7	-0.1	0.0	NA	-0.55	-0.39	-0.78	-0.41	-0.46	-0.51	-0.09	-0.59	-0.53
Ext-1	-0.1	-1.0	-1.0	-0.2	-1.6	-1.7	-0.1	0.0	0.0	-0.06	-0.05	0.00	0.02	0.00	-0.01	-0.02	-0.51	-0.02	0.00
Ext-2	-0.8	-0.8	-0.8	-1.0	-1.8	-0.9	-0.7	-0.1	0.0	-0.24	-0.20	-0.20	-0.38	-0.20	-0.21	-0.23	-0.50	-0.26	-0.23
Ext-3	-1.9	-1.2	-1.2	-2.1	-1.9	-0.1	-1.6	-0.1	-0.1	-0.56	-0.54	-0.49	-0.75	-0.44	-0.46	-0.49	-0.57	-0.58	-0.51
Ext-4	-1.9	-1.8	-1.8	-2.0	-0.8	-1.7	-1.4	-0.1	-0.1	-0.57	-0.52	-0.43	-0.74	-0.44	-0.45	-0.48	-0.57	-0.56	-0.47
Ext-5	-1.9	-0.8	-0.8	-1.6	0.0	-1.5	-1.4	-0.1	-0.1	-0.41	-0.46	-0.39	-0.64	-0.39	-0.40	-0.43	-0.50	-0.50	-0.12
N-1	-0.3	-0.3	-0.3	NA	-0.2	-0.2	-0.1	-0.1	NA	-0.72	-0.09	-0.60	NA	0.00	0.00	-0.03	-0.02	-0.05	-0.25
N-2	-0.6	-0.6	-0.6	-0.4	-0.4	-0.5	-0.7	-0.4	-0.5	-0.80	-0.07	-0.04	NA	0.00	-0.02	-0.03	-0.03	-0.05	-0.15
N-3	-0.2	-0.2	-0.2	-0.2	-0.2	-0.2	-0.2	0.0	0.0	-0.73	-0.06	-0.04	-0.08	-0.02	-0.03	-0.03	-0.03	-0.02	-0.04
N-4	-0.1	-0.2	-0.2	-0.1	-0.2	-0.3	-0.2	0.0	0.0	-0.64	-0.06	NA	-0.07	0.00	-0.02	-0.03	-0.02	-0.02	-0.04
N-5	-0.1	-0.2	-0.2	-0.1	-1.0	-0.1	-0.1	0.0	0.0	-0.55	-0.06	-0.05	-0.07	0.00	-0.02	-0.04	-0.02	-0.02	-0.05
N-6	-1.0	-1.2	-1.2	-0.1	-0.2	-1.0	-0.8	NA	NA	-0.53	NA	NA	NA	NA	NA	NA	NA	NA	-0.31
BS-1	-4.1	-3.9	-3.9	-0.3	-4.0	-5.0	-3.9	-4.0	-3.2	-1.21	-1.35	-1.21	-1.56	-1.00	-0.12	-1.12	-1.44	-1.43	-1.43

Measured in inches of H2O

NA - Not Available

Landfill Gas Control Well Vacuum Data
East Northport Landfill, East Northport, New York
for period of record between January, 2006 and June, 2019

Well	10/10	11/10	1/12	2/12	3/12	4/12	5/12	6/12	7/12	8/12	9/12	10/12	11/12	12/12	1/13	2/13	3/13	4/13	5/13
CWI-4	-0.78	-0.80	-0.97	-0.81	-0.86	-0.86	-1.32	-1.29	-0.61	-0.97	-0.90	NA	-0.86	-0.91	-0.88	-0.66	-1.29	-0.86	-0.70
CWI-5	-0.55	-0.89	-1.12	-0.82	-0.72	-0.72	-1.44	-1.40	-0.66	-1.05	-0.98	NA	-0.98	-1.05	-0.99	-1.14	-1.49	-0.94	-0.78
CWI-6	-0.16	-0.91	-1.16	-0.81	-0.93	-0.93	-1.40	-1.39	-0.66	-1.07	-0.93	NA	-1.02	-1.07	-0.99	-1.19	-1.56	-0.95	-0.77
CWI-7	-0.85	-0.83	-1.10	-0.76	-1.02	-1.02	-1.06	-0.78	-0.62	NA	NA	NA	-0.55	-1.01	-0.84	-1.05	-1.29	-0.73	-0.68
CWII-1	-0.79	-0.77	-0.78	-0.61	-0.71	-0.71	-1.02	-1.09	-0.57	-0.88	-0.71	NA	-0.47	-0.40	-0.23	-1.04	-1.54	-0.32	-0.20
CWII-2	-0.72	-0.76	-1.05	-0.71	-0.91	-0.91	-1.10	-1.07	-0.57	-0.88	-0.91	NA	-0.91	-0.99	-0.86	-1.06	-1.40	-0.83	-0.68
CWII-3	-0.71	-0.76	-1.11	-0.72	-0.69	-0.69	-1.15	-1.18	-0.47	-0.91	-0.99	NA	-0.98	-1.07	-0.90	-1.15	-1.50	-0.86	-0.70
CWII-4	-0.74	-0.77	-1.09	-0.71	-0.94	-0.94	-1.10	-1.06	-0.56	-0.89	-0.95	NA	-0.95	-1.04	-0.88	-1.13	-1.46	-0.85	-0.68
CWII-5	-0.72	-0.77	-1.11	-0.70	-0.89	-0.89	-1.11	-1.07	-0.56	-0.90	-0.98	NA	-0.97	-1.06	-0.89	0.00	-1.51	-0.86	-0.88
CWII-6	-0.73	NA	-0.02	N/A	N/A	N/A	NA	NA	NA	NA	NA	NA	NA	NA	NA	NA	NA	NA	NA
CWII-7	-0.40	-0.44	-0.03	0.00	0.00	0.00	-0.53	-0.50	-0.34	-0.55	-0.03	NA	0.00	-0.03	-0.46	0.00	0.00	0.00	-0.31
CWII-8	-0.02	-0.02	0.00	0.00	-0.09	-0.09	0.00	0.02	0.00	0.00	-0.02	NA	0.00	-0.04	0.00	0.00	0.00	0.00	0.00
CWII-9	-0.29	-0.30	-0.02	0.00	0.00	0.00	-0.35	-0.32	-0.23	-0.36	-0.03	NA	0.00	-0.04	-0.29	0.00	0.00	0.00	-0.22
NW-1	-0.80	-0.79	-0.98	-0.74	-0.76	-0.76	-1.30	-1.30	-0.62	-0.97	-0.85	NA	-0.84	-0.92	-0.90	-0.98	-1.25	-0.87	-0.68
NW-2	-0.88	-0.89	-1.06	-0.81	-0.72	-0.72	-1.52	-1.51	-0.69	-1.11	-0.96	NA	-0.96	-0.99	-1.00	-1.10	-1.40	-0.95	-0.75
NW-3	-0.78	-0.76	-0.93	-0.73	-0.70	-0.70	-1.31	-1.47	-0.61	-0.96	-0.16	NA	-0.84	-0.60	-0.87	-1.11	-1.25	-0.85	-0.69
NW-4	-0.20	-0.69	-0.85	-0.66	-0.61	-0.61	-1.18	-1.18	-0.58	-0.85	-0.83	NA	-0.74	-0.82	-0.82	-1.09	-1.15	-0.78	-0.68
NW-5	-0.55	-0.59	-0.69	-0.54	-0.49	-0.49	-0.91	-0.92	-0.46	-0.69	-0.64	NA	-0.62	-0.68	-0.66	-0.75	-0.89	-0.64	-0.52
NW-6	-0.57	-0.51	-0.73	-0.56	-0.62	-0.62	-0.99	-1.03	-0.54	-0.72	-0.67	NA	-0.63	-0.67	-0.66	-0.04	-0.97	-0.81	-0.55
Ext-1	-0.21	-0.03	0.00	0.00	-0.28	-0.28	-0.61	-0.02	-0.11	-0.61	-0.06	NA	-0.02	-0.09	-0.82	-0.02	-0.04	-0.04	-0.46
Ext-2	0.00	-0.26	-0.28	-0.57	-0.41	-0.41	-0.55	-0.39	-0.22	-0.72	-0.28	NA	-0.26	-0.35	-0.36	-0.29	-0.39	-0.29	-0.53
Ext-3	-0.52	-0.59	-0.76	-0.56	-0.51	-0.51	-0.58	-1.00	-0.49	-0.75	-0.67	NA	-0.64	-0.71	-0.70	-0.80	-1.02	-0.69	-0.20
Ext-4	-0.18	-0.60	-0.74	-0.53	-0.44	-0.44	-0.60	-0.99	-0.49	-0.30	-0.70	NA	-0.62	-0.69	-0.68	-0.24	-0.99	-0.67	-0.40
Ext-5	-0.40	-0.45	-0.61	-0.32	-0.30	-0.30	-0.42	-0.84	-0.44	-0.04	-0.50	NA	-0.56	-0.23	-0.59	-0.34	-0.87	-0.58	-0.32
N-1	-0.33	-0.08	-0.03	0.00	-0.02	-0.02	-0.03	0.20	NA	NA	NA	NA	NA	NA	NA	NA	NA	NA	NA
N-2	-0.15	-0.04	-0.04	N/A	-0.04	-0.04	-0.04	0.00	-0.02	-0.04	-0.09	NA	0.00	-0.07	-0.03	-0.03	-0.03	0.00	-0.04
N-3	-0.02	-0.04	-0.03	0.00	-0.06	-0.06	-0.03	0.00	-0.03	-0.03	-0.06	NA	0.00	-0.05	-0.02	0.00	-0.03	0.00	-0.04
N-4	-0.02	0.00	-0.04	0.00	-0.01	-0.01	0.00	0.00	0.00	-0.04	-0.05	NA	0.00	0.00	0.00	NA	0.00	0.00	-0.03
N-5	-0.02	-0.03	-0.04	0.00	-0.03	-0.03	-0.03	0.00	-0.02	-0.03	-0.05	NA	0.00	NA	-0.03	0.00	-0.03	0.00	-0.03
N-6	-0.29	-0.31	0.00	0.00	-0.26	-0.26	-0.34	-0.32	-0.24	-0.35	-0.04	NA	NA	-0.06	-0.29	0.00	0.00	0.00	-0.22
BS-1	-1.46	-1.55	-1.74	-1.30	-1.13	-1.13	-3.01	-3.11	-1.19	-2.01	-1.59	NA	-1.75	-1.64	-1.71	-1.75	-2.25	-1.52	-1.18

Measured in inches of H2O

NA - Not Available

Landfill Gas Control Well Vacuum Data
East Northport Landfill, East Northport, New York
for period of record between January, 2006 and June, 2019

Well	6/13	7/13	8/13	9/13	10/13	11/13	12/13	1/14	2/14	3/14	4/14	5/14	6/14	7/14	8/14	9/14	10/14	12/14	3/15
CWI-4	-0.80	-0.82	-1.35	-1.33	-1.39	-1.39	-1.59	-1.64	-1.11	-1.98	-1.13	-0.95	-1.06	-0.62	-0.61	-0.64	-0.92	-1.42	-1.63
CWI-5	-0.88	-1.02	-1.52	-1.54	-1.55	-1.60	-1.91	-1.90	-1.30	-1.72	-1.28	-1.28	-1.19	-0.69	-0.69	-0.70	-1.05	-1.66	-1.97
CWI-6	-0.87	-0.84	-1.50	-1.48	-1.54	-1.59	-2.00	-1.99	-1.36	-1.87	-1.25	-1.02	-1.21	-0.69	-0.76	-0.70	-1.12	-1.76	-2.05
CWI-7	-0.84	-0.79	-1.35	-1.34	-0.84	-0.45	-1.79	-1.81	-1.28	-1.74	-1.14	-1.14	-1.07	-0.63	-0.48	-0.64	N/A	-1.67	-0.05
CWII-1	-0.79	-0.75	-1.36	-1.32	-1.28	-1.41	-1.86	-1.79	-1.33	-1.69	-1.15	-1.16	-1.04	-0.62	-0.63	-0.64	-1.02	-1.67	-2.00
CWII-2	-0.78	-0.73	-1.26	-1.22	-1.22	-1.27	-1.72	-1.70	-1.24	-1.63	-1.09	-1.18	-1.02	-0.60	-0.61	-0.62	-0.97	-1.55	-1.80
CWII-3	-0.80	-0.75	-1.44	-1.29	-1.37	-1.51	-1.88	-1.87	-1.34	-1.55	-1.15	-0.77	-1.05	-0.58	-1.38	-0.64	-0.87	-1.69	-2.01
CWII-4	NA	-0.75	-1.36	-1.21	-1.29	-1.29	-1.85	-1.85	0.00	-0.01	-1.13	-1.15	-1.02	-0.60	-0.55	-0.62	-1.04	-1.66	-0.42
CWII-5	-0.03	-0.73	-1.27	-1.32	-1.29	-1.33	-1.54	-1.89	0.00	0.00	-1.13	-1.27	-1.09	-0.66	-0.62	-0.63	-1.05	-1.70	0.00
CWII-6	NA	NA	NA	-0.71	-0.72	-0.51	N/A	N/A	N/A	N/A	N/A	N/A	N/A	N/A	N/A	N/A	N/A	N/A	0.00
CWII-7	-0.39	-0.45	-0.52	-0.46	-0.54	-0.35	-0.04	0.00	0.00	-0.01	-0.48	-0.30	-0.40	-0.36	-0.39	-0.39	-0.08	-0.05	0.00
CWII-8	0.00	0.00	0.00	0.00	-0.02	0.00	-0.03	0.00	0.00	0.00	0.00	-0.02	0.00	-0.02	-0.02	-0.04	0.00	-0.02	0.00
CWII-9	-0.28	-0.30	-0.32	-0.29	-0.34	-0.29	-0.02	-0.04	0.00	0.00	-0.31	-0.31	0.28	-0.25	-0.28	-0.28	-0.16	-0.04	0.00
NW-1	-0.80	-0.77	-1.36	-1.37	-1.40	-1.56	-1.80	-1.59	-1.18	-1.11	-1.30	-1.29	-1.18	-0.61	-0.68	-0.64	-0.93	-1.46	-1.66
NW-2	-0.89	-0.22	-1.48	-1.22	-1.55	-1.61	-1.84	-1.85	-1.27	-1.42	-1.32	-1.35	-1.27	-0.70	-0.69	-0.64	-1.03	-1.61	-1.60
NW-3	-0.82	-0.54	-1.39	-1.39	-1.44	-1.44	-1.58	-1.73	-1.07	-1.09	-1.14	-1.20	-1.13	-0.62	-0.62	-0.64	-0.93	-1.44	-1.68
NW-4	-0.74	-0.56	-1.25	-1.33	-1.25	-1.27	-1.40	-1.37	-0.95	-1.02	-1.05	-1.11	-1.04	-0.58	-0.57	-0.59	-0.83	-1.26	-1.46
NW-5	-0.74	-0.61	-0.95	-1.22	-1.01	-0.99	-1.10	-1.07	-0.80	-0.98	-0.82	-0.86	-0.82	-0.48	-0.47	-0.50	-0.66	-1.00	-1.07
NW-6	-0.82	-0.59	-1.04	-1.19	-1.08	-1.05	-1.19	-1.19	-0.85	-0.99	-0.85	-0.95	-0.88	-0.50	-0.50	-0.51	-0.58	-1.07	-1.16
Ext-1	0.00	-0.50	-0.98	-1.00	-0.05	-0.21	-0.06	-0.98	-0.04	-0.07	-0.34	-0.05	-0.02	-0.02	-0.03	-0.04	-0.58	-0.11	-0.62
Ext-2	-0.62	-0.42	-0.42	-0.98	-0.40	-0.66	-0.46	-0.95	-0.41	-0.57	-0.37	-0.39	0.37	-0.24	-0.22	-0.23	-0.68	-0.47	-0.79
Ext-3	-0.66	-0.49	-1.06	-0.98	-1.09	-1.09	-1.26	-0.77	-1.01	-1.72	-0.94	-0.97	0.76	-0.52	-0.53	-0.54	-0.67	-1.11	-0.54
Ext-4	-0.64	-0.59	-1.02	-0.96	-1.29	-0.53	-1.22	-1.20	-1.19	-1.28	-0.91	-0.93	0.89	-0.50	-0.55	-0.51	-0.28	-1.07	-0.32
Ext-5	-0.58	-0.44	-0.88	-1.02	-0.92	-0.88	-1.03	-0.98	-0.87	-0.92	-0.24	-0.80	-0.78	-0.44	-0.32	-0.45	-0.03	-0.71	-0.05
N-1	NA	NA	NA	-0.02	-0.04	-0.03	N/A	N/A	N/A	N/A	N/A	N/A	N/A	N/A	N/A	N/A	N/A	N/A	0.00
N-2	-0.06	-0.04	-0.03	-0.02	-0.04	-0.02	-0.09	-0.05	-0.02	0.00	0.00	-0.06	-0.02	-0.05	-0.04	-0.08	-0.04	-0.02	-0.02
N-3	-0.02	-0.03	-0.02	0.00	0.00	-0.02	-0.05	-0.03	0.00	0.00	0.00	-0.04	0.00	-0.02	-0.02	-0.04	-0.02	-0.02	0.00
N-4	-0.04	-0.02	0.00	0.00	0.00	0.00	0.00	-0.02	N/A	0.00	0.00	0.00	0.00	-0.02	-0.03	-0.04	-0.02	-0.01	0.00
N-5	-0.27	-0.03	0.00	0.00	-0.02	-0.02	-0.05	-0.03	0.00	-0.04	0.00	-0.03	0.00	-0.02	-0.03	-0.04	-0.04	-0.02	0.00
N-6	-0.02	-0.29	-0.31	-0.30	-0.33	-0.29	-0.03	0.00	N/A	-0.02	-0.31	-0.33	0.27	-0.26	-0.29	-0.28	-0.01	-0.02	0.02
BS-1	-1.42	-1.46	-2.86	-2.87	-2.98	-2.96	-3.31	-3.40	-1.96	-2.43	-2.35	-2.35	-2.06	-1.14	-2.27	-1.17	-1.85	-2.69	-3.18

Measured in inches of H2O

NA - Not Available

Landfill Gas Control Well Vacuum Data
East Northport Landfill, East Northport, New York
for period of record between January, 2006 and June, 2019

Well	6/15	9/15	12/15	3/16	6/16	9/16	12/16	3/17	6/17	9/17	12/17	3/18	6/18	9/19	12/18	3/19	6/19		
CWI-4	-1.50	-2.00	-1.48	-1.54	-1.44	-1.22	-1.31	-1.46	-1.39	-1.21	-1.45	-1.58	-1.44	-1.38	0.00	0.00	-1.36		
CWI-5	-1.55	-1.70	-1.98	-1.98	-1.53	-1.42	-1.66	-1.67	-1.63	-1.43	-1.64	-1.73	-1.54	-1.66	0.00	0.00	-1.60		
CWI-6	-1.67	-1.50	NA	-1.91	-1.58	-1.48	-1.67	-1.76	-1.73	-1.38	-1.80	-2.03	-1.56	-1.72	0.00	0.00	-1.65		
CWI-7	-1.78	-0.72	-0.43	-0.70	-1.42	-1.27	-1.41	-1.51	-1.76	-0.20	-1.72	-2.05	-1.51	-1.04	0.15	0.36	-1.11		
CWII-1	-1.65	-1.08	-1.70	-1.68	-1.50	-1.11	-1.18	-1.62	-1.56	-1.19	-1.70	-1.89	-1.44	-1.52	0.00	0.00	-1.46		
CWII-2	-1.50	-1.42	-1.39	-1.47	-1.09	-1.14	-1.32	-1.92	-1.39	-1.10	-1.40	-1.95	-1.39	-1.38	0.00	0.00	-1.11		
CWII-3	-1.80	-1.47	-1.20	-1.62	-1.55	-1.22	-0.76	-1.65	-1.60	-1.11	-1.69	-1.91	-1.47	-1.50	0.00	0.00	-1.44		
CWII-4	-1.55	-1.30	-1.64	-1.73	-1.46	-1.20	-1.31	-1.59	-1.50	-1.05	-1.57	-1.92	-1.32	-1.05	0.00	0.00	-1.48		
CWII-5	-1.56	-1.29	-1.17	-1.79	-1.54	-1.37	-1.63	-1.68	-1.48	-1.24	-1.72	-1.95	-1.41	-1.63	0.00	0.00	-1.47		
CWII-6	NA	-0.75	0.00	0.00	-0.41	-0.02	-0.04	0.02	-0.11	NA	NA	NA	NA	NA	NA	NA	NA		
CWII-7	-0.04	-0.50	0.00	0.00	NA	-0.04	-0.01	0.01	-1.50	-0.36	-0.03	0.00	0.00	NA	NA	0.00	-1.48		
CWII-8	0.00	-0.07	0.00	0.00	0.00	0.00	0.00	0.00	0.00	0.00	-0.01	0.00	0.00	-1.35	0.00	-0.02	0.00		
CWII-9	-0.05	-0.44	0.00	0.00	-0.16	-0.05	-0.03	0.00	-0.06	-0.23	-0.02	-0.01	-1.50	0.00	0.00	-0.02	-0.18		
NW-1	-1.44	-1.77	-1.74	-1.59	-1.33	-1.51	-1.68	-1.68	-1.48	-1.34	-1.60	-1.68	-1.47	-1.50	0.00	0.00	-1.59		
NW-2	-1.69	-1.62	-1.71	-1.85	-1.53	-1.48	-1.41	-1.49	-1.66	-1.43	-1.75	-1.92	-1.72	-1.39	0.00	0.00	-1.69		
NW-3	-1.47	-1.40	-1.43	-1.63	-1.35	-1.25	-1.35	-1.03	-1.43	-1.28	-1.45	-1.56	-1.40	-1.43	0.00	0.00	-1.43		
NW-4	-1.27	-1.20	-1.33	-1.45	-1.27	-1.20	1.10	-1.15	-1.35	-1.14	-1.34	-1.49	-1.34	-1.86	0.00	0.00	-1.31		
NW-5	-1.15	-1.00	-1.02	-1.10	-0.95	-1.11	-1.11	-1.20	-1.30	-0.87	-1.40	-1.20	-1.02	-1.00	0.00	0.00	-1.01		
NW-6	-1.10	-1.10	-1.11	-1.18	-1.01	-1.10	-1.07	-1.10	-1.45	-0.90	-1.14	-1.17	-1.16	-1.07	0.00	0.00	-1.00		
Ext-1	-0.94	-0.06	-0.32	-0.06	-0.06	-1.08	-1.13	-0.42	-1.38	NA	-1.10	-0.52	-0.23	-1.00	-0.02	0.00	-1.34		
Ext-2	-1.07	-0.44	-0.41	-0.48	-0.42	-0.98	-0.92	-0.51	-1.29	NA	-1.17	-0.48	-0.37	-0.51	0.00	0.00	-1.47		
Ext-3	-1.13	-1.10	-1.18	-1.22	-1.04	-0.87	-0.81	-1.01	-1.25	NA	-1.09	-0.85	-0.62	-0.88	0.00	0.00	-1.30		
Ext-4	-1.08	-1.27	-1.87	-1.16	-1.01	-0.80	-0.90	-1.02	-1.31	-0.89	-1.21	-0.88	-0.56	-0.91	0.00	0.00	-1.10		
Ext-5	-0.94	-0.92	-0.88	-0.96	-0.85	-0.91	-0.91	-0.88	-0.92	-0.72	-1.08	-0.90	-0.86	-0.06	0.00	0.00	-0.09		
N-1	NA	-0.04	-0.07	-0.02	-0.05	-0.03	NA	NA	NA	NA	-0.05	NA	NA	0.00	0.00	0.00	NA		
N-2	-0.02	-0.01	-0.05	-0.04	-0.04	-0.03	0.00	-0.04	0.00	0.00	-0.06	-0.04	-0.20	NA	0.00	-0.03	-1.42		
N-3	0.00	0.00	-0.03	-0.03	-0.03	-0.03	NA	-0.02	0.00	0.00	-0.04	-0.03	-0.40	-0.02	0.00	-0.02	-1.23		
N-4	0.00	0.00	0.00	-0.02	-0.02	-0.02	0.00	0.00	0.00	0.00	-0.03	-0.03	-0.30	-0.01	0.00	-0.02	-1.57		
N-5	0.00	0.00	-0.03	-0.03	-0.03	-0.03	0.00	-0.02	0.00	0.00	-0.04	-0.02	-0.30	-0.09	0.00	0.00	-1.34		
N-6	0.00	-0.41	0.00	0.00	-0.16	-0.07	0.00	0.00	-0.06	0.00	-0.02	0.00	0.00	-0.05	0.00	-0.03	-1.40		
BS-1	-3.11	-3.05	-3.07	-3.20	-2.85	-2.61	-2.99	-3.02	-2.95	-2.64	-3.05	-2.15	-2.56	-1.31	0.00	0.00	-3.60		

Measured in inches of H2O

NA - Not Available