



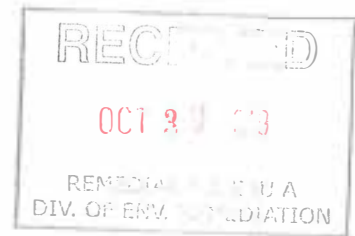
Town Hall • 100 Main Street  
Huntington, NY 11743-6991

Phone: (631) 351-3186  
Fax: (631) 351-3330  
<http://huntingtonny.gov>

**ENVIRONMENTAL WASTE  
MANAGEMENT**

October 23, 2019

Ms. Cynthia Whitfield P.E.  
Environmental Engineer II  
NYS Dept. of Environmental Conservation  
Division of Environmental Remediation  
Remedial Bureau A Section B., 11<sup>th</sup> Floor  
625 Broadway  
Albany, New York 12233-7015



**Re: Huntington/East Northport Landfill; NYSDEC Site #1-52-040;  
Environmental Monitoring Report**

Dear Ms. Whitfield,

As required by the Record of Decision for the above referenced site, transmitted herewith please find copies of the "Landfill Gas and Control System Monitoring Report" for the East Northport Landfill dated September 2019.

Please do not hesitate to call me if you have any questions or comments regarding these documents.

Sincerely,

John Clark, Director  
Environmental Waste Management

RL:rl

Enclosed: 1.) Landfill Gas and Control System Monitoring Report, September 2019

Cc: S. H. Rahman, NYSDEC (w/ encl.'s)



**Landfill Gas and Control System Monitoring  
Town of Huntington East Northport Landfill  
East Northport, New York  
September, 2019**

*Prepared for:*

**Town of Huntington Department of Environmental Waste Management  
100 Main Street  
Huntington, New York 11743**

*Prepared by:*

**RNC Environmental Geology, P.C.  
171 Deer Park Ave., Suite 3  
Babylon, New York 11702**

# RNC Environmental Geology, P.C.

---

## TABLE OF CONTENTS

	Page
Introduction .....	1
Scope of Work .....	1
Summary of Results .....	2
General .....	2
Monitoring Wells .....	2
LFG Control Wells .....	2
Condensate Traps .....	2
Discussion .....	3
Methane Monitoring Data .....	3
Physical and Operating Condition .....	3
Recommendations .....	4

### Figure

Following Page

Figure 1.	Landfill Gas Monitoring and Control System .....	1
-----------	--	---

### Summary Tables

Following Page

Table 1.	Landfill Gas Monitoring Well Data.....	4
Table 2.	Landfill Gas Control Well Data .....	4
Table 3.	Summary of Methane Detections .....	4
Table 4.	Landfill Gas Control Well Methane Data .....	4

### Appendix

Appendix 1.	Landfill Gas Control Well Vacuum Data
-------------	---------------------------------------

# **RNC Environmental Geology, P.C.**

---

## **Landfill Gas and Control System Monitoring Town of Huntington East Northport Landfill East Northport, New York September, 2019**

### **Introduction**

This report presents the results of September, 2019 (i.e., 3rd Quarter) landfill gas and control system monitoring activities performed at the Town of Huntington East Northport Landfill, as stipulated by the New York State Department of Environmental Conservation.

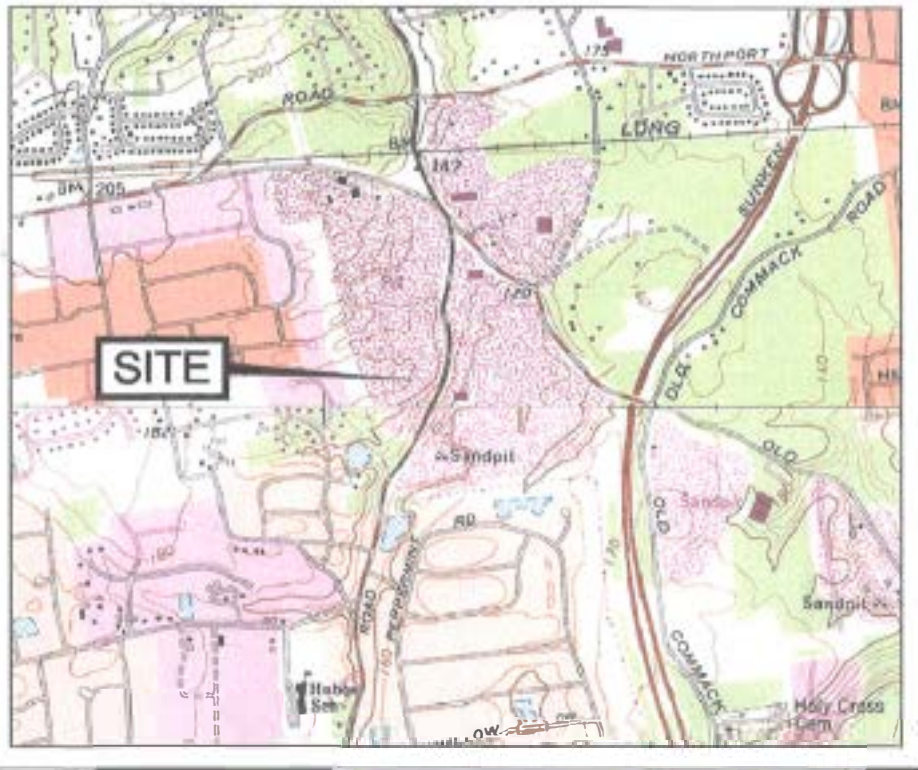
The primary landfill gas migration control system consists of thirty active landfill gas control wells connected - via a single header pipe forming a complete loop around the 44 acre East Northport Landfill - to one blower station. Landfill gas monitoring wells (consisting of 3-4 probes screened from approximately 5-70 feet below grade), situated outside of the aforementioned header pipe, provide a means to verify the control system's efficacy. Separate landfill gas control and monitoring systems are located at adjacent Animal Control and Resource Recovery Facilities.

The landfill area and pertinent components of the landfill gas monitoring and control system are depicted in Figure 1. The scope-of-work completed (per our agreement with the Town of Huntington Department of Environmental Waste Management dated January 10, 2019) precedes a summary of results. A discussion of methane monitoring data - with an emphasis on trends and occurrence - and the system's physical and operating condition follows.

### **Scope-of-Work**

The scope-of-work includes performance of the following on a quarterly basis:

- 1) Monitoring of all probes in 41 landfill monitoring wells and up to 5 probes around the Town Animal Control Facility for methane gas and gas pressure.
- 2) Monitoring of 30 methane control wells and blower station for temperature, flow rate, vacuum, methane and oxygen (balance of the control system to be checked and adjustment to wells and to blower intake made, if necessary).



**SITE LOCATOR**  
APPROXIMATE SCALE: 1" = 2000'

**LEGEND**

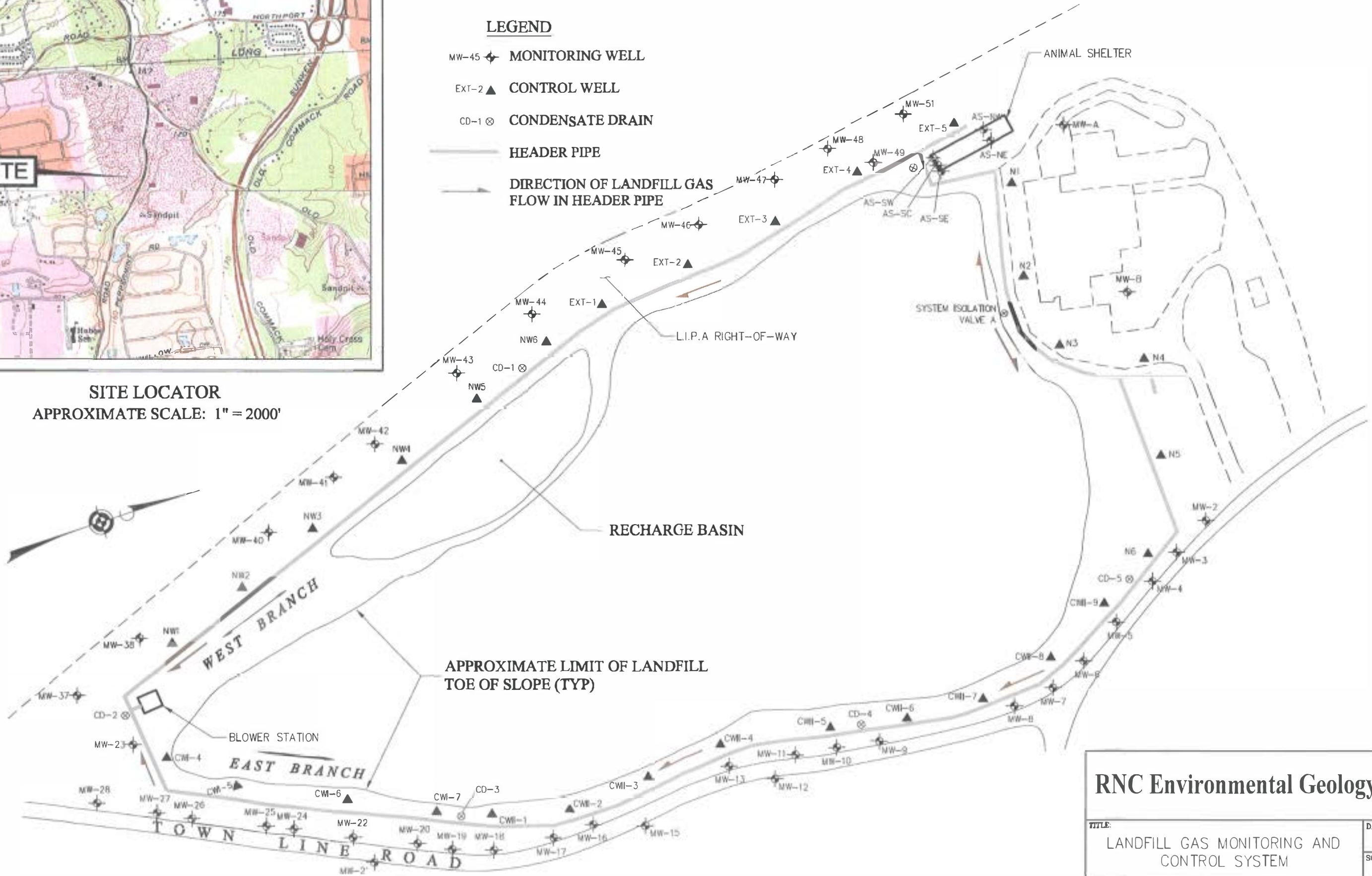
MW-45 MONITORING WELL

EXT-2 CONTROL WELL

CD-1 CONDENSATE DRAIN

HEADER PIPE

DIRECTION OF LANDFILL GAS FLOW IN HEADER PIPE



**RNC Environmental Geology, P.C.**

TITLE: LANDFILL GAS MONITORING AND CONTROL SYSTEM		DATE: 3/29/19
FIGURE: <b>1</b>		SCALE: AS SHOWN
TOWN OF HUNTINGTON EAST NORTHPORT LANDFILL EAST NORTHPORT, NY		DRAWING NO: 01006-1A
		APPR. BY: B.C.

## RNC Environmental Geology, P.C.

---

- 3) Examination of 5 condensate traps in the control system for proper operation and water accumulation.
- 4) Noting of any problems, damage, missing parts etc. at each monitoring well, methane control well, condensate trap, Animal Control Facility probes and blower station.

### Summary of Results

#### *General*

Reported monthly monitoring activities were performed September 27, 2019. Climatic conditions for the monitoring period are as follows:

Temperature: 74 (°F); Barometric Pressure: 30.05 (in. Hg); Relative Humidity: 57.0%; Precipitation: 0.20 inches; Wind Speed & Direction: 4.95 mph, northeasterly.

#### *Monitoring Wells*

A summary of measured and recorded landfill gas monitoring well data is presented on Table 1. As shown, methane was not detected throughout the entire monitoring well network.

#### *LFG Control Wells*

Table 2 presents a summary of measured and recorded landfill gas control well data; including the system's blower station where 2 "inlet" measuring points (Blower Station 1 & 2) and 1 "outlet" measuring point (Blower Station 3) are located. As shown on Table 2, control well vacuum values (i.e., negative pressure), a direct indicator of the system's balance, range from -0.03 – -1.55 (in. H<sub>2</sub>O). "Extracted" methane values range from 0.0 – 1.1 %.

#### *Condensate Traps*

Standing water measured within condensate traps CD-1 (5.0 feet), CD-2 (6.0 feet), CD-3 (8.6 feet), CD-4 (7.2 feet) and CD-5 (4.4 feet) was evacuated, as per usual, upon the completion of monitoring activities.

# RNC Environmental Geology, P.C.

---

## Discussion

### *Methane Monitoring Data*

A summary of measured and recorded methane concentrations detected at landfill gas monitoring wells throughout the period-of-record from January, 2006 through September, 2019 is shown on Table 3. As shown on Table 3, methane has historically been detected sporadically and at low levels at 14 site monitoring wells. The highest concentration detected throughout the entire landfill gas monitoring well network continues to be 5.0 %; as measured at Animal Control Facility monitoring well AS-NE during March, 2001 monitoring activities (see October, 2007 report).

Methane has not been detected at primary landfill gas migration control system monitoring wells since June, 2002, when a nominal concentration of 0.1% was recorded at MW-49. The low-level and sporadic nature of methane detections indicates that landfill gas control systems in relation to both the Animal Control Facility and East Northport Landfill continue to perform effectively.

A summary of methane concentrations detected at landfill gas control wells during the period-of-record from January, 2006 through September, 2019 is presented on Table 4. As shown, with the exception of a distinct decrease in reported concentrations from July through September, 2013, methane values are generally consistent throughout this period.

### *Physical and Operating Condition*

Based upon current and historical landfill gas monitoring data summarized above, the East Northport Landfill's primary landfill gas control system continues to effectively negate the off-site migration of methane. Vacuum values measured and recorded since January of 2010 have been historically low throughout the system (see Appendix 1). This phenomenon is attributable to precipitation and subsequent control well flooding.

Table 1 and Table 2 note the physical condition of system monitoring wells and control wells, respectively. As shown, with the exception of: monitoring wells MW-4 (all labcocks cracked/missing), MW-13 (riser pipe disconnected at probe B), MW-15 (mis-labeled as MW-14), MW-19 (riser pipe "A" missing labcock), MW-21 (mis-labeled as MW-15), MW-24 (riser pipe "C" missing labcock), MW-25 (riser pipe "A" missing labcock), MW-41 (riser pipe "C" missing labcock), MW-45 (riser pipe disconnected at probe B), MW-47 (mis-labeled as MW-48) and MW-48 (unlabeled) and control well CWII-7 (flooded), monitoring wells and control wells were accessible and in good condition.

## RNC Environmental Geology, P.C.

---

Note that, in spite of the previously mentioned maintenance issues, sufficient data is available to effectively monitor the efficacy of the landfill gas control systems. Blower station pump # 1 was operating during September monitoring activities and all control wells continue to be set in the full-open-position. This full-open-position will be maintained for an evaluation period and modified if/as necessary.

### Recommendations

- \* In the event that methane is detected at any monitoring well associated with the primary landfill gas migration control system, recommence the monitoring of off and on-site structures.
- \* Assess occurrence of methane versus landfill area (i.e., identify dominant landfill gas production zones).
- \* Continue assessment of potential impact of all control valves at full-open-position on system-wide vacuum/methane levels.
- \* Increase the inspection (e.g., weekly) and, when necessary (i.e., following extended periods of precipitation or snow melt), increase the pumpage periodicity of standing water within condensate traps CD-1 through CD-5. Also assess whether or not standing water is within select control wells (e.g., CWII-7) and remove, when present.
- \* Confirm anticipated increase in control well vacuum values with decreasing precipitation. In the event vacuum values do not increase, test the primary landfill gas migration control system header pipe for the presence of blockages and/or leaks.
- \* Increase the inspection periodicity of the system blower station to ensure it is functioning at an appropriate rate.



**Table 1**  
**Landfill Gas Monitoring Well Data**  
**Town of Huntington East Northport Landfill, East Northport, New York**  
**Measured September 27, 2019**

Well No.	Probe Pressure (in. H <sub>2</sub> O)				Methane 0-100% (Volume)				Condition
	A	B	C	D	A	B	C	D	
MW-A	-0.04	-0.06			0.0	0.0			
MW-B	-0.04	-0.04			0.0	0.0			
MW-2	-0.03	-0.06	-0.04	-0.03	0.0	0.0	0.0	0.0	
MW-3	-0.01	-0.02	-0.05	-0.08	0.0	0.0	0.0	0.0	
MW-4	-0.04	0.00	0.00	-0.09	0.00	0.00	0.00	0.00	<i>All labcocks cracked/missing</i>
MW-5	0.00	0.00	0.00		0.0	0.0	0.0		
MW-6	0.00	0.00	0.00		0.0	0.0	0.0		
MW-7	-0.03	-0.03	-0.04		0.0	0.0	0.0		
MW-8	0.00	0.00	0.00		0.0	0.0	0.0		
MW-9	0.00	-0.02	0.00		0.0	0.0	0.0		
MW-10	-0.03	0.00	-0.09	-0.08	0.0	0.0	0.0	0.0	
MW-11	0.05	0.00	-0.05	0.00	0.0	0.0	0.0	0.0	
MW-12	-0.03	-0.02	-0.02		0.0	0.0	0.0		
MW-13	-0.03	NA	-0.04		0.0	NA	0.0		<i>Riser pipe disconnected/missing</i>
MW-15	-0.05	-0.10	-0.09		0.0	0.0	0.0		<i>Mislabeled as MW-14</i>
MW-16	-0.13	-0.11	-0.08		0.0	0.0	0.0		
MW-17	-0.09	-0.03	-0.09		0.0	0.0	0.0		
MW-18	-0.02	0.00	-0.01		0.0	0.0	0.0		
MW-19	-0.16	0.00	0.00	0.00	0.0	0.0	0.0	0.0	<i>Riser pipe "A" missing labcock</i>
MW-20	-0.05	-0.02	-0.01		0.0	0.0	0.0		
MW-21	-0.02	-0.04	-0.06	-0.02	0.0	0.0	0.0	0.0	<i>Mislabeled as MW-15</i>
MW-22	-0.02	-0.04	0.00		0.0	0.0	0.0		

Table 1 (continued)

Well No.	Probe Pressure (in. H <sub>2</sub> O)				Methane 0-100% (Volume)				Condition
	A	B	C	D	A	B	C	D	
MW-23	-0.09	-0.07	-0.04	-0.02	0.0	0.0	0.0	0.0	
MW-24	0.00	-0.04	0.00		0.0	0.0	0.0		Riser pipe "C" missing labcock
MW-25	-0.19	-0.13	-0.13		0.0	0.0	0.0		Riser pipe "A" missing labcock
MW-26	0.00	0.00	0.00	0.00	0.0	0.0	0.0	0.0	
MW-27	0.00	0.00	0.00		0.0	0.0	0.0		
MW-28	0.00	0.00	0.00		0.0	0.0	0.0		
MW-37	0.00	0.00	0.00		0.0	0.0	0.0		
MW-38	-0.02	-0.03	0.00		0.0	0.0	0.0		
MW-40	0.00	-0.05	-0.02	0.00	0.0	0.0	0.0	0.0	
MW-41	-0.03	0.00	-0.03		0.0	0.0	0.0		Riser pipe "C" missing labcock
MW-42	0.00	0.00	-0.03		0.0	0.0	0.0		
MW-43	-0.03	-0.02	-0.02		0.0	0.0	0.0		
MW-44	-0.02	-0.02	-0.03		0.0	0.0	0.0		
MW-45	0.00	NA	0.00		0.0	NA	0.0		Riser pipe disconnected
MW-46	0.00	-0.02	-0.02	-0.02	0.0	0.0	0.0	0.0	
MW-47	0.00	0.00	0.00		0.0	0.0	0.0		Mislabeled as MW-48
MW-48	0.00	0.00	0.00		0.0	0.0	0.0		
MW-49	0.00	0.00	-0.02		0.0	0.0	0.0		
MW-51	-0.04	-0.02	0.00		0.0	0.0	0.0		
AS-NW	0.00				0.0				
AS-NE	0.00				0.0				
AS-SW	0.00				0.0				
AS-SC	0.00				0.0				
AS-SE	0.00				0.0				

A - Shallow Probe

B - Middle Probe

C - Deep Probe

D - Deepest Probe

Shading indicates the well is not equipped with that particular probe.

NA - Not Available

**Table 2**  
**Landfill Gas Control Well Data**  
**Town of Huntington East Northport Landfill, East Northport, New York**  
**Measured September 27, 2019**

Well No.	Temp (°F)	Flow Rate (ft <sup>3</sup> /min)	Vacuum (in. H <sub>2</sub> O)	Methane 0-100 % (Volume)	Oxygen % in Air	Condition
CWI-4	68.0	78.21	-1.25	0.0	19.4	
CWI-5	72.2	129.35	-1.42	0.3	18.1	
CWI-6	71.0	201.00	-1.39	0.2	18.6	
CWI-7	69.5	57.07	-1.20	0.3	18.2	
CWII-1	74.4	73.20	-1.15	1.1	16.5	
CWII-2	67.3	72.33	-0.91	0.2	19.4	
CWII-3	71.5	191.54	-1.09	0.9	15.6	
CWII-4	67.2	76.23	-1.06	0.7	16.9	
CWII-5	69.0	65.68	-0.89	0.3	17.0	
CWII-6	69.5	58.16	-1.04	0.3	16.5	
CWII-7	NA	NA	NA	NA	NA	Flooded
CWII-8	69.3	9.48	-0.03	0.0	19.7	
CWII-9	63.8	8.75	-0.36	0.1	18.0	
NW-1	77.3	219.19	-1.52	0.3	19.7	
NW-2	77.7	70.25	-1.55	0.0	19.7	
NW-3	78.2	68.79	-1.34	0.0	19.3	
NW-4	79.8	217.83	-1.22	0.1	19.3	
NW-5	72.6	117.79	-0.95	0.1	19.1	
NW-6	80.8	188.40	-0.99	0.1	18.9	
Ext-1	73.3	70.97	-0.06	0.0	20.0	
Ext-2	74.0	67.52	-0.40	0.0	18.7	
Ext-3	73.9	75.30	-1.00	0.1	19.1	
Ext-4	68.8	45.19	-0.97	0.0	16.0	
Ext-5	80.9	170.84	-0.80	0.0	18.1	
N-1	70.1	10.30	-1.02	0.0	18.3	
N-2	68.4	8.41	-1.07	0.0	19.2	
N-3	67.7	5.61	-1.05	0.0	18.3	
N-4	68.2	3.92	-0.99	0.0	18.2	
N-5	63.6	21.32	-1.01	0.0	18.0	
N-6	63.9	11.79	-0.98	0.0	19.2	
Blower Station - 1	68.7	276.47	-3.52	0.2	18.9	
Blower Station - 2	68.5	259.36	-2.31	0.0	20.5	
Blower Station - 3	70.2	202.57	1.47	0.0	20.3	

NA - Not Available

**Table 3**  
**Summary of Methane Detections**  
**Landfill Gas Monitoring Wells**  
**Town of Huntington East Northport Landfill, East Northport, New York**  
*for period of record between January, 2006 and September, 2019*

Well	1/06	2/06	3/06	4/06	5/06	6/06	7/06	8/06	9/06	10/06	11/06	12/06	1/07	2/07	3/07	4/07
MW-7C	0.0	0.0	0.0	0.0	0.0	0.0	0.0	0.0	0.0	0.0	0.0	0.0	0.0	0.0	0.0	0.0
MW-8C	0.0	0.0	0.0	0.0	0.0	0.0	0.0	0.0	0.0	0.0	0.0	0.0	0.0	0.0	0.0	0.0
MW-9A	0.0	0.0	0.0	0.0	0.0	0.0	0.0	0.0	0.0	0.0	0.0	0.0	0.0	0.0	0.0	0.0
MW-9B	0.0	0.0	0.0	0.0	0.0	0.0	0.0	0.0	0.0	0.0	0.0	0.0	0.0	0.0	0.0	0.0
MW-9C	0.0	0.0	0.0	0.0	0.0	0.0	0.0	0.0	0.0	0.0	0.0	0.0	0.0	0.0	0.0	0.0
MW-11A	0.0	0.0	0.0	0.0	0.0	0.0	0.0	0.0	0.0	0.0	0.0	0.0	0.0	0.0	0.0	0.0
MW-12A	0.0	0.0	0.0	0.0	0.0	0.0	0.0	0.0	0.0	0.0	0.0	0.0	0.0	0.0	0.0	0.0
MW-12C	0.0	0.0	0.0	0.0	0.0	0.0	0.0	0.0	0.0	0.0	0.0	0.0	0.0	0.0	0.0	0.0
MW-18A	0.0	0.0	0.0	0.0	0.0	0.0	0.0	0.0	0.0	0.0	0.0	0.0	0.0	0.0	0.0	0.0
MW-19A	0.0	0.0	0.0	0.0	0.0	0.0	0.0	0.0	0.0	0.0	0.0	0.0	0.0	0.0	0.0	0.0
MW-24C	0.0	0.0	0.0	0.0	0.0	0.0	0.0	0.0	0.0	0.0	0.0	0.0	0.0	0.0	0.0	0.0
MW-38B	0.0	0.0	0.0	0.0	0.0	0.0	0.0	0.0	0.0	0.0	0.0	0.0	0.0	0.0	0.0	0.0
MW-39A	0.0	0.0	0.0	0.0	0.0	0.0	NA	NA	NA	NA	NA	NA	NA	NA	NA	NA
MW-49A	0.0	0.0	0.0	0.0	0.0	0.0	0.0	0.0	0.0	0.0	0.0	0.0	0.0	0.0	0.0	0.0
MW-49B	0.0	0.0	0.0	0.0	0.0	0.0	0.0	0.0	0.0	0.0	0.0	0.0	0.0	0.0	0.0	0.0
MW-49C	0.0	0.0	0.0	0.0	0.0	0.0	0.0	0.0	0.0	0.0	0.0	0.0	0.0	0.0	0.0	0.0
AS-SW	0.0	0.0	0.0	0.0	0.0	0.0	0.0	0.0	0.0	0.0	0.0	0.0	0.0	0.0	0.0	0.0
AS-SC	0.0	0.0	0.0	0.0	0.0	0.0	0.0	0.0	0.0	0.0	0.0	0.0	0.0	0.0	0.0	0.0
AS-NE	0.0	0.0	0.0	0.0	0.0	0.0	0.1	0.0	0.0	0.1	0.0	0.0	0.0	0.0	0.0	0.0

NA - Not Available

Measured in % Volume

Table 3 (continued)

Well	5/07	6/07	7/07	8/07	9/07	10/07	11/07	12/07	1/08	2/08	3/08	4/08	5/08	6/08	7/08	8/08
MW-7C	0.0	0.0	0.0	0.0	0.0	0.0	0.0	0.0	0.0	0.0	0.0	0.0	0.0	0.0	0.0	0.0
MW-8C	0.0	0.0	0.0	0.0	0.0	0.0	0.0	0.0	0.0	0.0	0.0	0.0	0.0	0.0	0.0	0.0
MW-9A	0.0	0.0	0.0	0.0	0.0	0.0	0.0	0.0	0.0	0.0	0.0	0.0	0.0	0.0	0.0	0.0
MW-9B	0.0	0.0	0.0	0.0	0.0	0.0	0.0	0.0	0.0	0.0	0.0	0.0	0.0	0.0	0.0	0.0
MW-9C	0.0	0.0	0.0	0.0	0.0	0.0	0.0	0.0	0.0	0.0	0.0	0.0	0.0	0.0	0.0	0.0
MW-11A	0.0	0.0	0.0	0.0	0.0	0.0	0.0	0.0	0.0	0.0	0.0	0.0	0.0	0.0	0.0	0.0
MW-12A	0.0	0.0	0.0	0.0	0.0	0.0	0.0	0.0	0.0	0.0	0.0	0.0	0.0	0.0	0.0	0.0
MW-12C	0.0	0.0	0.0	0.0	0.0	0.0	0.0	0.0	0.0	0.0	0.0	0.0	0.0	0.0	0.0	0.0
MW-18A	0.0	0.0	0.0	0.0	0.0	0.0	0.0	0.0	0.0	0.0	0.0	0.0	0.0	0.0	0.0	0.0
MW-19A	0.0	0.0	0.0	0.0	0.0	0.0	0.0	0.0	0.0	0.0	0.0	0.0	0.0	0.0	0.0	0.0
MW-24C	0.0	0.0	0.0	0.0	0.0	0.0	0.0	0.0	0.0	0.0	0.0	0.0	0.0	0.0	0.0	0.0
MW-38B	0.0	0.0	0.0	0.0	0.0	0.0	0.0	0.0	0.0	0.0	0.0	0.0	0.0	0.0	0.0	0.0
MW-39A	NA	NA	NA	NA	NA	NA	NA	NA	NA	NA	NA	NA	NA	NA	NA	NA
MW-49A	0.0	0.0	0.0	0.0	0.0	0.0	0.0	0.0	0.0	0.0	0.0	0.0	0.0	0.0	0.0	0.0
MW-49B	0.0	0.0	0.0	0.0	0.0	0.0	0.0	0.0	0.0	0.0	0.0	0.0	0.0	0.0	0.0	0.0
MW-49C	0.0	0.0	0.0	0.0	0.0	0.0	0.0	0.0	0.0	0.0	0.0	0.0	0.0	0.0	0.0	0.0
AS-SW	0.0	0.0	0.0	0.0	0.0	0.0	0.0	0.0	0.0	0.0	0.0	0.0	0.0	0.0	0.0	0.0
AS-SC	0.0	0.0	0.0	0.0	0.0	0.0	0.0	0.0	0.0	0.0	0.0	0.0	0.0	0.0	0.0	0.0
AS-NE	0.0	0.0	0.0	0.0	0.0	0.0	0.0	0.0	0.0	0.0	0.0	0.0	0.0	0.0	0.0	0.0

NA - Not Available

Measured in % Volume

Table 3 (continued)

Well	9/08	10/08	11/08	12/08	1/09	2/09	3/09	4/09	5/09	6/09	7/09	8/09	9/09	10/09	11/09	12/09
MW-7C	0.0	0.0	0.0	0.0	0.0	0.0	0.0	0.0	0.0	0.0	0.0	0.0	0.0	0.0	0.0	0.0
MW-8C	0.0	0.0	0.0	0.0	0.0	0.0	0.0	0.0	0.0	0.0	0.0	0.0	0.0	0.0	0.0	0.0
MW-9A	0.0	0.0	0.0	0.0	0.0	0.0	0.0	0.0	0.0	0.0	0.0	0.0	0.0	0.0	0.0	0.0
MW-9B	0.0	0.0	0.0	0.0	0.0	0.0	0.0	0.0	0.0	0.0	0.0	0.0	0.0	0.0	0.0	0.0
MW-9C	0.0	0.0	0.0	0.0	0.0	0.0	0.0	0.0	0.0	0.0	0.0	0.0	0.0	0.0	0.0	0.0
MW-11A	0.0	0.0	0.0	0.0	0.0	0.0	0.0	0.0	0.0	0.0	0.0	0.0	0.0	0.0	0.0	0.0
MW-12A	0.0	0.0	0.0	0.0	0.0	0.0	0.0	0.0	0.0	0.0	0.0	0.0	0.0	0.0	0.0	0.0
MW-12C	0.0	0.0	0.0	0.0	0.0	0.0	0.0	0.0	0.0	0.0	0.0	0.0	0.0	0.0	0.0	0.0
MW-18A	0.0	0.0	0.0	0.0	0.0	0.0	0.0	0.0	0.0	0.0	0.0	0.0	0.0	0.0	0.0	0.0
MW-19A	0.0	0.0	0.0	0.0	0.0	0.0	0.0	0.0	0.0	0.0	0.0	0.0	0.0	0.0	0.0	0.0
MW-24C	0.0	0.0	0.0	0.0	0.0	0.0	0.0	0.0	0.0	0.0	0.0	0.0	0.0	0.0	0.0	0.0
MW-38B	0.0	0.0	0.0	0.0	0.0	0.0	0.0	0.0	0.0	0.0	0.0	0.0	0.0	0.0	0.0	0.0
MW-39A	NA	NA	NA	NA	NA	NA	NA	NA	NA	NA	NA	NA	NA	NA	NA	NA
MW-49A	0.0	0.0	0.0	0.0	0.0	0.0	0.0	0.0	0.0	0.0	0.0	0.0	0.0	0.0	0.0	0.0
MW-49B	0.0	0.0	0.0	0.0	0.0	0.0	0.0	0.0	0.0	0.0	0.0	0.0	0.0	0.0	0.0	0.0
MW-49C	0.0	0.0	0.0	0.0	0.0	0.0	0.0	0.0	0.0	0.0	0.0	0.0	0.0	0.0	0.0	0.0
AS-SW	0.0	0.0	0.0	0.0	0.0	0.0	0.0	0.0	0.0	0.0	0.0	0.0	0.0	0.0	0.0	0.0
AS-SC	0.0	0.0	0.0	0.0	0.0	0.0	0.0	0.0	0.0	0.0	0.0	0.0	0.0	0.0	0.0	0.0
AS-NE	0.0	0.0	0.0	0.0	0.0	0.0	0.0	0.0	0.0	0.0	0.0	0.0	0.0	0.0	0.0	0.0

NA - Not Available

Measured in % Volume

Table 3 (continued)

Well	1/10	2/10	3/10	4/10	5/10	6/10	7/10	8/10	9/10	10/10	11/10	1/12	2/12	3/12	4/12	5/12
MW-7C	0.0	0.0	0.0	0.0	0.0	0.0	0.0	0.0	0.0	0.0	0.0	0.0	0.0	0.0	0.0	0.0
MW-8C	0.0	0.0	0.0	0.0	0.0	0.0	0.0	0.0	0.0	0.0	0.0	0.0	0.0	0.0	0.0	0.0
MW-9A	0.0	0.0	0.0	0.0	0.0	0.0	0.0	0.0	0.0	0.0	0.0	0.0	0.0	0.0	0.0	0.0
MW-9B	0.0	0.0	0.0	0.0	0.0	0.0	0.0	0.0	0.0	0.0	0.0	0.0	0.0	0.0	0.0	0.0
MW-9C	0.0	0.0	0.0	0.0	0.0	0.0	0.0	0.0	0.0	0.0	0.0	0.0	0.0	0.0	0.0	0.0
MW-11A	0.0	0.0	0.0	0.0	0.0	0.0	0.0	0.0	0.0	0.0	0.0	0.0	0.0	0.0	0.0	0.0
MW-12A	0.0	0.0	0.0	0.0	0.0	0.0	0.0	0.0	0.0	0.0	0.0	0.0	0.0	0.0	0.0	0.0
MW-12C	0.0	0.0	0.0	0.0	0.0	0.0	0.0	0.0	0.0	0.0	0.0	0.0	0.0	0.0	0.0	0.0
MW-18A	0.0	0.0	0.0	0.0	0.0	0.0	0.0	0.0	0.0	0.0	0.0	0.0	0.0	0.0	0.0	0.0
MW-19A	0.0	0.0	0.0	0.0	0.0	0.0	0.0	0.0	0.0	0.0	0.0	0.0	0.0	0.0	0.0	0.0
MW-24C	0.0	0.0	0.0	0.0	0.0	0.0	0.0	0.0	0.0	0.0	0.0	0.0	0.0	0.0	0.0	0.0
MW-38B	0.0	0.0	0.0	0.0	0.0	0.0	0.0	0.0	0.0	0.0	0.0	0.0	0.0	0.0	0.0	0.0
MW-39A	NA	NA	NA	NA	NA	NA	NA	NA	NA	NA	NA	NA	NA	NA	NA	NA
MW-49A	0.0	0.0	0.0	0.0	0.0	0.0	0.0	0.0	0.0	0.0	0.0	0.0	0.0	0.0	0.0	0.0
MW-49B	0.0	0.0	0.0	0.0	0.0	0.0	0.0	0.0	0.0	0.0	0.0	0.0	0.0	0.0	0.0	0.0
MW-49C	0.0	0.0	0.0	0.0	0.0	0.0	0.0	0.0	0.0	0.0	0.0	0.0	0.0	0.0	0.0	0.0
AS-SW	0.0	0.0	0.0	0.0	0.0	0.0	0.0	0.0	0.0	0.0	0.0	0.0	0.0	0.0	0.0	0.0
AS-SC	0.0	0.0	0.0	0.0	0.0	0.0	0.0	0.0	0.0	0.0	0.0	0.0	0.0	0.0	0.0	0.0
AS-NE	0.0	0.0	0.0	0.0	0.0	0.0	0.0	0.0	0.0	0.0	0.0	0.0	0.0	0.0	0.0	0.0

NA - Not Available

Measured in % Volume

Table 3 (continued)

Well	6/12	7/12	8/12	9/12	10/12	11/12	12/12	1/13	2/13	3/13	4/13	5/13	6/13	7/13	8/13	9/13
MW-7C	0.0	0.0	0.0	0.0	NA	0.0	0.0	0.0	0.0	0.0	0.0	0.0	0.0	0.0	0.0	0.0
MW-8C	0.0	0.0	0.0	0.0	NA	0.0	0.0	0.0	0.0	0.0	0.0	0.0	0.0	0.0	0.0	0.0
MW-9A	0.0	0.0	0.0	0.0	NA	0.0	0.0	0.0	0.0	0.0	0.0	0.0	0.0	0.0	0.0	0.0
MW-9B	0.0	0.0	0.0	0.0	NA	0.0	0.0	0.0	0.0	0.0	0.0	0.0	0.0	0.0	0.0	0.0
MW-9C	0.0	0.0	0.0	0.0	NA	0.0	0.0	0.0	0.0	0.0	0.0	0.0	0.0	0.0	0.0	0.0
MW-11A	0.0	0.0	0.0	0.0	NA	0.0	0.0	0.0	0.0	0.0	0.0	0.0	0.0	0.0	0.0	0.0
MW-12A	0.0	0.0	0.0	0.0	NA	0.0	0.0	0.0	0.0	0.0	0.0	0.0	0.0	0.0	0.0	0.0
MW-12C	0.0	0.0	0.0	0.0	NA	0.0	0.0	0.0	0.0	0.0	0.0	0.0	0.0	0.0	0.0	0.0
MW-18A	0.0	0.0	0.0	0.0	NA	0.0	0.0	0.0	0.0	0.0	0.0	0.0	0.0	0.0	0.0	0.0
MW-19A	0.0	0.0	0.0	0.0	NA	0.0	0.0	0.0	0.0	0.0	0.0	0.0	0.0	0.0	0.0	0.0
MW-24C	0.0	0.0	0.0	0.0	NA	0.0	0.0	0.0	0.0	0.0	0.0	0.0	0.0	0.0	0.0	0.0
MW-38B	0.0	0.0	0.0	0.0	NA	0.0	0.0	0.0	0.0	0.0	0.0	0.0	0.0	0.0	0.0	0.0
MW-39A	NA	NA	NA	NA	NA	NA	NA	NA	NA	NA	NA	NA	NA	NA	NA	NA
MW-49A	0.0	0.0	0.0	0.0	NA	0.0	0.0	0.0	0.0	0.0	0.0	0.0	0.0	0.0	0.0	0.0
MW-49B	0.0	0.0	0.0	0.0	NA	0.0	0.0	0.0	0.0	0.0	0.0	0.0	0.0	0.0	0.0	0.0
MW-49C	0.0	0.0	0.0	0.0	NA	0.0	0.0	0.0	0.0	0.0	0.0	0.0	0.0	0.0	0.0	0.0
AS-SW	0.0	0.0	0.0	0.0	NA	0.0	0.0	0.0	0.0	0.0	0.0	0.0	0.0	0.0	0.0	0.0
AS-SC	0.0	0.0	0.0	0.0	NA	0.0	0.0	0.0	0.0	0.0	0.0	0.0	0.0	0.0	0.0	0.0
AS-NE	0.0	0.0	0.0	0.0	NA	0.0	0.0	0.0	0.0	0.0	0.0	0.0	0.0	0.0	0.0	0.0

NA - Not Available

Measured in % Volume



Table 3 (continued)

Well	10/13	11/13	12/13	1/14	2/14	3/14	4/14	5/14	6/14	7/14	8/14	9/14	10/14	12/14	3/15	6/15
MW-7C	0.0	0.0	0.0	0.0	0.0	0.0	0.0	0.0	0.0	0.0	0.0	0.0	0.0	0.0	0.0	0.0
MW-8C	0.0	0.0	0.0	0.0	0.0	0.0	0.0	0.0	0.0	0.0	0.0	0.0	0.0	0.0	0.0	0.0
MW-9A	0.0	0.0	0.0	0.0	0.0	0.0	0.0	0.0	0.0	0.0	0.0	0.0	0.0	0.0	0.0	0.0
MW-9B	0.0	0.0	0.0	0.0	0.0	0.0	0.0	0.0	0.0	0.0	0.0	0.0	0.0	0.0	0.0	0.0
MW-9C	0.0	0.0	0.0	0.0	0.0	0.0	0.0	0.0	0.0	0.0	0.0	0.0	0.0	0.0	0.0	0.0
MW-11A	0.0	0.0	0.0	0.0	0.0	0.0	0.0	0.0	0.0	0.0	0.0	0.0	0.0	0.0	0.0	0.0
MW-12A	0.0	0.0	0.0	0.0	0.0	0.0	0.0	0.0	0.0	0.0	0.0	0.0	0.0	0.0	0.0	0.0
MW-12C	0.0	0.0	0.0	0.0	0.0	0.0	0.0	0.0	0.0	0.0	0.0	0.0	0.0	0.0	0.0	0.0
MW-18A	0.0	0.0	0.0	0.0	0.0	0.0	0.0	0.0	0.0	0.0	0.0	0.0	0.0	0.0	0.0	0.0
MW-19A	0.0	0.0	0.0	0.0	0.0	0.0	0.0	0.0	0.0	0.0	0.0	0.0	0.0	0.0	0.0	0.0
MW-24C	0.0	0.0	0.0	0.0	0.0	0.0	0.0	0.0	0.0	0.0	0.0	0.0	0.0	0.0	0.0	0.0
MW-38B	0.0	0.0	0.0	0.0	0.0	0.0	0.0	0.0	0.0	0.0	0.0	0.0	0.0	0.0	0.0	0.0
MW-39A	NA	NA	NA	NA	NA	NA	NA	NA	NA	NA	NA	NA	NA	NA	NA	NA
MW-49A	0.0	0.0	0.0	0.0	0.0	0.0	0.0	0.0	0.0	0.0	0.0	0.0	0.0	0.0	0.0	0.0
MW-49B	0.0	0.0	0.0	0.0	0.0	0.0	0.0	0.0	0.0	0.0	0.0	0.0	0.0	0.0	0.0	0.0
MW-49C	0.0	0.0	0.0	0.0	0.0	0.0	0.0	0.0	0.0	0.0	0.0	0.0	0.0	0.0	0.0	0.0
AS-SW	0.0	0.0	0.0	0.0	0.0	0.0	0.0	0.0	0.0	0.0	0.0	0.0	0.0	0.0	0.0	0.0
AS-SC	0.0	0.0	0.0	0.0	0.0	0.0	0.0	0.0	0.0	0.0	0.0	0.0	0.0	0.0	0.0	0.0
AS-NE	0.0	0.0	0.0	0.0	0.0	0.0	0.0	0.0	0.0	0.0	0.0	0.0	0.0	0.0	0.0	0.0

NA - Not Available

Measured in % Volume

Table 3 (continued)

Well	9/15	12/15	3/16	6/16	9/16	12/16	3/17	6/17	9/17	12/17	3/18	6/18	9/18	12/18	3/19	6/19
MW-7C	0.0	0.0	0.0	0.0	0.0	0.0	0.0	0.0	0.0	0.0	0.0	0.0	0.0	0.0	0.0	0.0
MW-8C	0.0	0.0	0.0	0.0	0.0	0.0	0.0	0.0	0.0	0.0	0.0	0.0	0.0	0.0	0.0	0.0
MW-9A	0.0	0.0	0.0	0.0	0.0	0.0	0.0	0.0	0.0	0.0	0.0	0.0	0.0	0.0	0.0	0.0
MW-9B	0.0	0.0	0.0	0.0	0.0	0.0	0.0	0.0	0.0	0.0	0.0	0.0	0.0	0.0	0.0	0.0
MW-9C	0.0	0.0	0.0	0.0	0.0	0.0	0.0	0.0	0.0	0.0	0.0	0.0	0.0	0.0	0.0	0.0
MW-11A	0.0	0.0	0.0	0.0	0.0	0.0	0.0	0.0	0.0	0.0	0.0	0.0	0.0	0.0	0.0	0.0
MW-12A	0.0	0.0	0.0	0.0	0.0	0.0	0.0	0.0	0.0	0.0	0.0	0.0	0.0	0.0	0.0	0.0
MW-12C	0.0	0.0	0.0	0.0	0.0	0.0	0.0	0.0	0.0	0.0	0.0	0.0	0.0	0.0	0.0	0.0
MW-18A	0.0	0.0	0.0	0.0	0.0	0.0	0.0	0.0	0.0	0.0	0.0	0.0	0.0	0.0	0.0	0.0
MW-19A	0.0	0.0	0.0	0.0	0.0	0.0	0.0	0.0	0.0	0.0	0.0	0.0	0.0	0.0	0.0	0.0
MW-24C	0.0	0.0	0.0	0.0	0.0	0.0	0.0	0.0	0.0	0.0	0.0	0.0	0.0	0.0	0.0	0.0
MW-38B	0.0	0.0	0.0	0.0	0.0	0.0	0.0	0.0	0.0	0.0	0.0	0.0	0.0	0.0	0.0	0.0
MW-39A	NA	NA	NA	NA	NA	NA	NA	NA	NA	NA	NA	NA	0.0	0.0	0.0	0.0
MW-49A	0.0	0.0	0.0	0.0	0.0	0.0	0.0	NA	NA	0.0	0.0	0.0	0.0	0.0	0.0	0.0
MW-49B	0.0	0.0	0.0	0.0	0.0	0.0	0.0	NA	NA	0.0	0.0	0.0	0.0	0.0	0.0	0.0
MW-49C	0.0	0.0	0.0	0.0	0.0	0.0	0.0	NA	NA	0.0	0.0	0.0	0.0	0.0	0.0	0.0
AS-SW	0.0	0.0	0.0	0.0	0.0	0.0	0.0	0.0	0.0	0.0	0.0	0.0	0.0	0.0	0.0	0.0
AS-SC	0.0	0.0	0.0	0.0	0.0	0.0	0.0	0.0	0.0	0.0	0.0	0.0	0.0	0.0	0.0	0.0
AS-NE	0.0	0.0	0.0	0.0	0.0	0.0	0.0	0.0	0.0	0.0	0.0	0.0	0.0	0.0	0.0	0.0

NA - Not Available

Measured in % Volume

Table 3 (continued)

Well	9/19	12/19	3/20	6/20	9/20	12/20	3/21	6/21	9/21	12/21	3/22	6/22	9/22	12/22	3/23	6/23
MW-7C	0.0															
MW-8C	0.0															
MW-9A	0.0															
MW-9B	0.0															
MW-9C	0.0															
MW-11A	0.0															
MW-12A	0.0															
MW-12C	0.0															
MW-18A	0.0															
MW-19A	0.0															
MW-24C	0.0															
MW-38B	0.0															
MW-39A	NA															
MW-49A	0.0															
MW-49B	0.0															
MW-49C	0.0															
AS-SW	0.0															
AS-SC	0.0															
AS-NE	0.0															

NA - Not Available

Measured in % Volume

**Table 4**  
**Landfill Gas Control Well Methane Data**  
**Town of Huntington East Northport Landfill, East Northport, New York**  
*for period of record between January, 2006 and September, 2019*

Well	1/06	2/06	3/06	4/06	5/06	6/06	7/06	8/06	9/06	10/06	11/06	12/06	1/07	2/07	3/07	4/07
CWI-4	0.0	0.3	0.4	0.2	0.1	0.3	0.1	0.0	0.0	0.2	0.1	0.1	0.1	0.1	0.0	0.1
CWI-5	0.0	1.8	2.0	1.5	0.8	1.5	0.2	0.0	0.0	1.0	0.8	0.7	0.7	2.1	0.0	0.7
CWI-6	0.1	0.3	0.1	0.4	1.0	0.9	0.2	0.0	0.0	0.0	1.0	0.6	0.6	0.0	0.0	0.8
CWI-7	0.2	5.0	6.0	5.0	0.1	0.7	0.6	0.0	0.0	0.2	2.2	1.5	1.1	NA	0.1	2.0
CWII-1	0.4	5.0	6.0	2.7	1.6	2.4	2.6	7.0	0.0	0.3	4.0	4.0	3.8	5.0	5.0	3.8
CWII-2	0.2	4.5	4.2	3.4	2.7	1.9	1.0	2.2	0.0	3.0	1.6	1.6	1.6	1.2	1.7	1.7
CWII-3	0.2	2.3	2.1	0.9	1.8	1.5	1.5	1.7	0.0	0.2	0.0	0.7	1.1	1.1	1.3	NA
CWII-4	0.2	4.0	3.8	1.0	4.0	1.3	0.8	4.7	0.0	0.3	5.0	2.8	2.8	1.7	3.6	2.7
CWII-5	0.0	1.0	4.2	0.5	0.7	0.6	0.4	1.5	0.0	0.0	0.8	0.4	0.6	0.8	0.2	0.4
CWII-6	0.2	3.5	0.7	0.8	2.0	0.6	1.1	0.5	0.0	0.1	0.9	1.4	1.7	1.7	0.3	1.2
CWII-7	0.0	0.1	3.4	0.0	0.0	0.0	0.0	0.2	0.0	0.0	0.1	0.0	0.0	0.0	0.0	0.0
CWII-8	0.0	0.0	0.0	0.0	0.0	0.0	0.2	0.0	0.0	0.0	0.0	0.0	0.0	0.0	0.0	0.0
CWII-9	0.0	1.1	0.0	0.7	0.6	0.2	0.5	0.4	0.0	0.0	0.4	0.4	0.7	0.6	0.4	0.3
NW-1	0.0	0.0	1.0	0.8	0.0	0.0	0.0	0.0	0.0	0.0	0.0	0.0	0.0	0.0	0.0	0.0
NW-2	0.0	0.0	0.0	0.0	0.0	0.0	0.0	0.0	0.0	0.0	0.0	0.0	0.0	0.0	0.0	0.0
NW-3	0.0	0.0	0.0	0.0	0.0	0.0	0.0	0.0	0.0	0.0	0.0	0.0	0.0	0.0	0.0	0.0
NW-4	0.0	0.0	0.0	0.0	0.0	0.0	0.0	0.0	0.0	0.0	0.0	0.0	0.0	0.0	0.0	0.0
NW-5	0.0	0.0	0.0	0.0	0.0	0.0	0.0	0.0	0.0	0.0	0.0	0.0	0.0	0.0	0.0	0.0
NW-6	0.0	0.0	0.0	0.0	0.0	0.0	0.0	2.0	0.0	0.0	0.0	0.0	0.0	0.0	0.0	0.0
Ext-1	0.0	0.0	0.0	0.0	0.0	0.1	0.0	0.0	0.0	0.0	0.0	0.0	0.0	0.0	0.0	0.0
Ext-2	0.0	0.0	0.0	0.0	0.0	0.1	0.1	0.2	0.0	0.0	0.0	0.0	0.0	0.0	0.0	0.0
Ext-3	0.2	0.0	0.0	0.0	0.2	0.0	0.8	0.2	0.0	3.0	1.2	0.3	1.3	0.2	0.0	0.1
Ext-4	0.2	0.0	0.0	0.0	0.4	0.2	0.4	0.1	0.0	2.0	0.4	0.2	1.0	0.1	0.0	0.1
Ext-5	0.0	0.0	0.0	0.0	0.0	0.0	0.0	0.0	0.0	0.0	0.0	0.0	0.0	0.0	0.0	0.0
N-1	0.0	0.0	0.0	0.0	0.0	0.0	0.0	0.1	0.0	0.0	0.0	0.0	0.0	0.0	0.0	0.0
N-2	2.6	1.3	0.6	11.0	NA	0.0	4.8	0.0	0.8	4.4	3.0	0.5	0.2	0.0	3.1	4.0
N-3	0.0	0.0	0.0	0.0	0.0	0.0	0.0	0.0	0.0	0.0	0.0	0.0	0.0	0.0	0.0	0.0
N-4	0.0	0.0	0.0	0.0	0.0	0.0	0.0	0.0	0.0	0.0	0.0	0.0	0.0	0.0	0.0	0.0
N-5	0.0	0.0	0.0	0.2	0.0	0.0	0.0	0.0	0.0	0.0	0.0	0.0	0.0	0.0	0.0	0.0
N-6	NA	0.0	0.0	0.1	NA	0.7	0.1	0.1	0.0	0.0	NA	NA	NA	NA	NA	0.0
BS-1	0.1	0.0	0.6	0.9	0.7	0.4	0.4	0.0	0.1	0.9	0.7	0.5	0.5	0.6	0.1	0.5

NA - Not Available

Measured in % Volume

Table 4 (continued)

Well	5/07	6/07	7/07	8/07	9/07	10/07	11/07	12/07	1/08	2/08	3/08	4/08	5/08	6/08	7/08	8/08
CWI-4	0.2	0.2	0.2	0.1	0.1	0.0	0.0	0.0	0.0	0.1	0.1	0.1	0.0	0.1	0.1	0.1
CWI-5	0.8	0.9	0.8	0.7	0.8	0.8	0.0	0.7	0.5	0.5	2.5	0.4	0.2	0.3	0.4	0.0
CWI-6	0.7	1.1	1.3	0.8	1.0	0.8	0.1	0.5	0.6	0.9	0.5	0.4	0.3	0.5	0.7	0.3
CWI-7	2.3	2.4	2.3	2.0	3.0	2.6	0.2	2.0	2.2	2.1	1.3	1.1	0.9	1.2	1.3	0.5
CWII-1	4.6	9.0	8.0	5.0	5.0	1.3	5.0	7.0	7.0	10.0	4.0	3.3	2.2	3.8	3.8	1.0
CWII-2	1.9	2.3	2.0	1.5	1.8	6.0	1.4	1.0	1.1	1.2	0.7	0.9	0.6	0.7	0.9	2.5
CWII-3	NA	3.8	2.7	4.0	3.5	1.8	2.8	0.3	1.5	2.2	1.4	1.0	0.5	1.0	1.4	0.7
CWII-4	2.6	3.5	3.3	3.1	3.5	2.6	3.5	2.5	2.1	2.7	2.0	1.5	1.1	1.5	1.5	1.0
CWII-5	0.9	1.7	1.3	1.7	1.8	0.9	1.0	0.2	0.3	0.4	2.5	0.3	0.3	0.5	0.8	1.2
CWII-6	1.7	2.5	2.0	2.0	2.9	1.7	2.1	0.3	1.0	0.7	0.7	0.7	0.6	0.8	0.0	0.5
CWII-7	0.0	0.0	0.0	0.0	0.0	0.0	0.0	0.0	0.0	0.0	0.0	0.0	0.0	0.0	0.0	1.1
CWII-8	0.0	0.0	0.0	0.0	0.0	0.0	0.0	0.0	0.0	0.0	0.0	0.0	0.0	0.0	0.0	0.0
CWII-9	0.5	0.5	0.5	0.4	0.6	0.4	0.5	0.3	4.5	0.2	0.2	0.2	0.2	0.2	0.1	0.3
NW-1	0.0	0.0	0.0	0.0	0.0	0.0	0.0	0.0	0.0	0.0	0.0	0.0	0.0	0.0	0.1	0.0
NW-2	0.0	0.0	0.0	0.0	0.0	0.0	0.0	0.0	0.0	0.0	0.0	0.0	0.0	0.0	0.0	0.0
NW-3	0.0	9.0	0.0	0.0	0.0	0.0	0.0	0.0	0.0	0.0	0.0	0.0	0.0	0.0	0.0	0.0
NW-4	0.0	0.0	0.0	0.0	0.0	0.0	0.0	0.0	0.0	0.0	0.0	0.0	0.0	0.0	0.0	0.0
NW-5	0.0	0.0	0.0	0.0	0.0	0.0	0.0	0.0	0.0	0.0	0.0	0.0	0.0	0.0	0.0	0.0
NW-6	0.0	0.0	0.0	0.0	0.0	0.0	0.0	0.0	0.0	0.0	0.0	0.0	0.0	0.0	0.0	0.0
Ext-1	0.0	0.1	0.0	0.0	0.0	0.0	0.0	0.0	0.0	0.0	0.0	0.0	0.0	0.0	0.0	0.0
Ext-2	0.1	0.1	0.0	0.0	0.0	0.0	0.0	0.0	0.0	0.0	0.0	0.0	0.0	0.0	0.0	0.0
Ext-3	0.0	0.0	0.0	0.0	0.0	0.0	0.3	0.0	1.5	1.5	0.2	0.0	0.0	0.0	0.0	0.0
Ext-4	0.3	0.0	0.1	0.0	0.0	0.0	0.0	0.0	0.0	0.0	0.1	0.0	0.0	0.0	0.0	0.0
Ext-5	0.0	0.0	0.0	0.0	0.0	0.0	0.0	0.0	0.0	0.0	0.0	0.0	0.0	0.0	0.0	0.0
N-1	0.0	0.0	0.0	0.0	0.0	0.0	0.0	0.0	0.0	0.0	0.0	0.0	0.0	0.0	0.0	0.0
N-2	2.8	3.4	3.3	3.0	3.4	4.7	0.3	3.5	2.0	NA	1.5	2.8	2.2	2.4	2.3	2.2
N-3	0.0	0.0	0.0	0.0	0.0	0.0	0.0	0.0	0.0	0.0	0.0	0.0	0.0	0.0	0.0	0.0
N-4	0.0	0.0	0.0	0.0	0.0	0.0	0.0	0.0	0.0	0.0	0.0	0.0	0.0	0.0	0.0	0.0
N-5	0.0	0.0	0.0	0.0	0.0	0.0	0.0	2.0	0.0	0.0	0.0	0.0	0.0	0.0	0.0	0.0
N-6	0.0	0.0	0.0	0.0	0.0	2.0	NA	NA	NA	NA	NA	NA	NA	NA	NA	NA
BS-1	0.5	0.7	0.4	0.7	0.7	0.6	0.0	0.5	0.4	0.5	0.3	0.3	0.2	0.3	0.3	0.3

NA - Not Available  
Measured in % Volume

Table 4 (continued)

Well	9/08	10/08	11/08	12/08	1/09	2/09	3/09	4/09	5/09	6/09	7/09	8/09	9/09	10/09	11/09	12/09
CWI-4	0.0	0.0	0.0	0.0	0.0	0.0	0.0	0.1	0.2	0.0	0.0	0.0	0.0	0.1	0.2	0.3
CWI-5	0.2	1.5	0.3	0.0	0.3	0.0	0.1	0.2	0.2	0.0	0.1	0.0	0.2	0.5	0.4	0.3
CWI-6	0.2	0.2	0.6	0.0	0.5	0.0	0.0	0.3	0.3	0.0	0.0	0.1	0.0	1.1	1.0	1.2
CWI-7	0.8	0.4	2.0	NA	0.6	0.0	0.3	1.0	1.2	0.0	0.1	0.1	0.1	NA	NA	NA
CWII-1	1.8	1.1	3.3	0.0	2.2	0.1	0.5	1.5	1.6	0.9	5.0	5.2	4.5	5.0	4.8	4.3
CWII-2	0.4	0.3	1.0	0.0	0.5	0.1	0.2	0.5	0.6	0.0	3.3	3.5	3.1	1.8	1.6	1.8
CWII-3	0.3	0.1	1.0	0.0	0.5	0.0	0.3	0.9	1.0	0.7	2.2	2.4	2.4	3.0	2.8	2.7
CWII-4	0.7	0.3	1.5	NA	0.1	0.1	0.5	1.6	1.4	0.8	1.5	1.7	1.8	2.0	1.6	1.9
CWII-5	0.2	0.0	0.4	0.0	0.1	0.0	0.1	0.1	0.0	0.2	0.2	0.1	1.2	1.1	1.0	1.7
CWII-6	0.6	0.8	1.0	NA	0.0	0.0	0.2	NA	NA	NA	NA	NA	0.8	NA	NA	NA
CWII-7	0.0	0.0	0.0	0.0	0.0	0.0	0.0	0.0	0.0	0.5	0.0	0.0	0.0	0.0	0.0	0.1
CWII-8	0.0	0.0	0.0	0.0	0.0	0.0	0.0	0.1	0.2	0.0	0.0	0.0	0.0	0.0	0.0	0.0
CWII-9	0.1	0.1	0.5	0.0	0.0	0.0	0.0	0.0	0.0	0.6	0.3	0.2	0.6	0.2	0.1	0.4
NW-1	0.0	0.0	0.0	0.0	0.0	0.0	0.0	0.0	0.0	0.0	0.0	0.0	0.0	0.0	0.0	NA
NW-2	0.0	0.0	0.0	0.0	0.0	0.0	0.0	0.0	0.0	0.0	0.0	0.0	0.0	0.0	0.0	0.0
NW-3	0.0	0.0	0.0	0.0	0.0	0.0	0.0	0.0	0.0	0.0	0.0	0.0	0.0	0.0	0.0	0.0
NW-4	0.0	0.0	0.0	0.0	0.0	0.0	0.0	0.0	0.0	0.0	0.0	0.0	0.0	0.0	0.0	0.0
NW-5	0.0	0.0	0.0	0.0	0.0	0.0	0.0	0.0	0.0	0.0	0.0	0.0	0.0	0.0	0.0	0.0
NW-6	0.0	0.0	0.0	0.0	0.0	0.0	0.0	0.0	0.0	0.0	0.0	0.0	0.0	0.0	0.0	NA
Ext-1	0.0	0.0	0.0	0.0	0.0	0.0	0.0	0.0	0.0	0.0	0.0	0.0	0.0	0.0	0.0	0.0
Ext-2	0.0	0.0	0.0	0.0	0.0	0.0	0.0	0.0	0.0	0.0	0.0	0.0	0.0	0.0	0.0	0.0
Ext-3	0.0	0.0	0.0	0.0	0.0	0.0	0.0	0.0	0.0	0.1	0.0	0.0	0.0	0.0	0.0	0.0
Ext-4	0.0	0.0	0.0	0.0	0.1	0.1	0.0	0.0	0.4	0.1	0.0	0.0	0.0	0.1	0.0	0.0
Ext-5	0.0	0.0	0.0	0.0	0.0	0.0	0.0	0.0	0.3	0.0	0.0	0.0	0.0	0.0	0.1	0.0
N-1	0.0	NA	NA	NA	NA	0.0	0.0	0.0	0.0	NA	0.0	0.0	0.0	0.0	NA	0.0
N-2	2.0	2.3	2.0	0.0	2.5	0.0	1.5	1.5	0.0	4.0	3.5	3.8	3.8	9.0	8.4	0.6
N-3	0.0	0.7	0.0	0.0	0.0	0.0	0.0	0.0	1.4	0.0	0.0	0.0	0.0	0.0	0.0	0.0
N-4	0.0	0.0	0.0	NA	0.0	0.0	0.0	0.0	0.0	0.0	0.0	0.0	0.0	0.0	0.0	0.1
N-5	0.0	0.0	0.0	NA	0.0	0.0	0.0	0.0	0.0	0.0	0.1	0.2	0.1	0.0	0.0	0.0
N-6	0.0	NA	NA	NA	0.0	0.0	0.0	0.0	0.0	0.0	0.0	0.0	0.0	NA	NA	0.0
BS-1	0.1	0.1	0.0	0.0	0.2	0.0	0.0	0.0	0.0	0.8	0.0	0.0	0.0	0.5	0.5	0.3

NA - Not Available

Measured in % Volume

Table 4 (continued)

Well	1/10	2/10	3/10	4/10	5/10	6/10	7/10	8/10	9/10	10/10	11/10	1/12	2/12	3/12	4/12	5/12
CWI-4	0.1	NA	0.0	0.1	0.5	0.1	0.0	0.1	0.1	0.0	0.0	0.1	0.0	0.0	0.1	0.2
CWI-5	1.0	1.0	0.8	0.2	0.3	1.0	0.0	0.7	0.5	0.2	0.2	1.0	0.3	0.4	0.9	0.0
CWI-6	NA	0.0	1.2	1.1	0.8	0.7	NA	0.6	0.8	0.6	0.2	0.7	0.0	0.0	0.7	0.2
CWI-7	NA	NA	NA	NA	NA	NA	NA	NA	NA	0.3	1.0	1.6	0.1	0.2	0.1	0.0
CWII-1	4.0	3.5	5.0	4.2	4.1	3.3	6.0	6.0	5.0	1.1	5.0	5.0	0.6	0.5	5.0	3.0
CWII-2	1.5	1.0	2.3	1.9	2.1	1.6	3.0	2.2	2.0	6.0	1.5	3.0	0.2	0.3	0.2	12.0
CWII-3	1.5	1.4	1.2	0.0	0.3	1.3	6.0	3.5	2.2	3.0	1.1	10.0	0.1	0.3	3.0	2.5
CWII-4	2.0	2.0	0.5	0.1	0.0	1.5	2.2	1.5	1.3	2.8	1.3	4.0	0.0	0.0	2.0	1.5
CWII-5	0.5	1.0	NA	0.1	0.1	1.0	2.1	1.6	1.5	1.5	0.7	0.7	0.0	0.0	1.5	0.0
CWII-6	NA	NA	NA	NA	NA	NA	NA	NA	NA	1.1	NA	0.0	N/A	N/A	NA	NA
CWII-7	0.1	0.0	0.0	0.1	0.1	0.0	0.0	0.0	0.1	0.0	0.1	0.1	0.0	0.0	0.1	0.0
CWII-8	0.1	0.0	0.0	0.0	0.5	0.1	0.4	0.0	0.0	0.0	0.0	0.0	0.0	0.0	0.0	0.1
CWII-9	0.2	0.1	0.0	0.1	0.1	0.2	0.0	0.5	0.5	0.4	0.4	0.1	0.0	0.0	0.6	0.3
NW-1	0.0	0.0	0.0	0.1	0.0	0.0	0.0	0.0	0.0	0.0	0.0	0.0	0.0	0.0	0.0	0.0
NW-2	0.0	0.0	0.0	0.1	0.0	0.0	0.0	0.0	0.0	0.0	0.0	0.0	0.0	0.0	0.0	0.0
NW-3	0.0	0.0	0.0	0.0	0.0	0.0	0.0	0.0	0.0	0.0	0.1	0.0	0.0	0.0	0.0	0.0
NW-4	0.0	0.0	0.0	0.1	0.2	0.0	0.0	0.0	0.0	0.0	0.1	0.0	0.0	0.0	0.0	0.0
NW-5	0.0	0.0	0.0	0.0	0.0	0.0	0.0	0.0	0.0	0.0	0.0	0.0	0.0	0.0	0.0	0.0
NW-6	0.0	0.0	0.0	0.0	0.0	0.0	0.0	0.0	0.0	0.0	0.0	0.0	0.0	0.0	0.0	0.0
Ext-1	0.0	0.0	0.0	0.0	0.0	0.0	0.0	0.0	0.0	0.0	0.0	0.0	0.0	0.0	0.0	0.0
Ext-2	0.0	0.0	0.0	0.0	0.0	0.0	0.0	0.0	0.0	0.0	0.1	0.0	0.0	0.0	0.1	0.0
Ext-3	0.1	0.4	0.2	0.0	0.0	0.2	0.0	0.4	0.4	0.4	0.5	1.5	0.0	0.0	0.1	0.0
Ext-4	0.1	0.4	0.0	0.0	0.1	0.0	0.0	0.0	0.0	0.0	0.1	0.3	0.0	0.0	0.3	0.0
Ext-5	0.1	0.3	0.0	0.0	0.0	0.0	0.0	0.0	0.0	0.0	0.2	0.2	0.0	0.0	0.1	0.0
N-1	0.0	0.0	NA	0.0	0.0	0.0	0.0	0.0	0.0	0.0	0.0	0.0	0.0	0.0	0.0	0.0
N-2	4.5	4.0	NA	0.0	1.6	0.0	0.0	0.0	4.0	4.2	3.5	0.0	N/A	0.2	0.0	0.0
N-3	0.0	0.0	0.0	0.0	0.0	0.0	0.0	0.0	0.0	0.0	0.0	0.0	0.0	0.0	0.0	0.0
N-4	0.0	NA	0.0	0.0	0.0	0.0	0.0	0.0	0.0	0.0	0.0	0.0	0.0	0.0	0.0	0.0
N-5	0.0	0.0	0.0	0.0	0.0	0.0	0.0	0.0	0.0	0.0	0.0	0.0	0.0	0.0	0.0	0.0
N-6	NA	NA	NA	NA	NA	NA	NA	NA	0.0	0.0	0.0	0.0	0.0	0.1	0.1	0.0
BS-1	0.4	0.3	0.0	0.0	0.1	0.1	0.0	0.2	0.5	0.2	0.4	1.0	0.0	0.7	0.6	0.5

NA - Not Available

Measured in % Volume

Table 4 (continued)

Well	6/12	7/12	8/12	9/12	10/12	11/12	12/12	1/13	2/13	3/13	4/13	5/13	6/13	7/13	8/13	9/13
CWI-4	0.1	0.1	0.0	0.0	NA	0.0	0.1	0.1	0.0	0.0	0.0	0.1	0.1	0.1	0.0	0.0
CWI-5	0.5	0.3	1.0	0.5	NA	0.5	0.4	0.4	0.4	0.4	0.2	0.3	0.5	0.5	0.0	0.0
CWI-6	1.0	0.6	0.7	0.8	NA	0.3	0.6	0.5	0.4	0.4	0.2	0.4	0.5	0.2	0.0	0.0
CWI-7	1.5	0.3	NA	NA	NA	0.8	0.7	1.0	1.0	1.3	0.0	1.0	1.2	0.6	0.1	0.0
CWII-1	4.6	4.0	8.0	9.0	NA	4.0	9.0	3.3	0.0	5.0	3.0	1.0	0.0	0.7	0.0	0.0
CWII-2	2.5	0.9	2.0	2.8	NA	1.0	1.0	10.0	0.8	1.6	0.6	0.6	1.2	0.2	0.0	0.0
CWII-3	4.2	2.0	3.0	3.0	NA	2.5	2.1	1.5	1.1	2.6	0.5	1.8	3.2	0.8	0.0	0.0
CWII-4	2.4	1.1	1.9	2.1	NA	2.0	2.4	1.8	2.0	2.5	1.0	1.3	NA	0.8	0.0	0.0
CWII-5	1.5	1.5	1.5	1.5	NA	0.5	1.0	0.2	0.1	0.1	0.1	2.0	1.2	1.0	0.2	0.0
CWII-6	NA	NA	NA	NA	NA	NA	NA	NA	NA	NA	NA	NA	NA	NA	NA	0.1
CWII-7	0.1	0.0	0.0	0.1	NA	0.0	0.1	0.1	0.0	0.0	0.0	0.0	0.0	0.0	0.0	0.0
CWII-8	0.0	0.0	0.0	0.0	NA	0.0	0.0	0.0	0.0	0.0	0.0	1.1	0.0	0.0	0.0	0.0
CWII-9	0.4	0.3	0.3	0.2	NA	0.0	0.3	0.3	0.0	0.0	0.0	0.3	0.5	0.2	0.0	0.0
NW-1	0.0	0.0	0.0	0.0	NA	0.0	0.0	0.0	0.0	0.0	0.0	0.0	0.0	0.0	0.0	0.0
NW-2	0.0	0.0	0.0	0.0	NA	0.0	0.0	0.0	0.0	0.0	0.0	0.0	0.0	0.0	0.0	0.0
NW-3	0.0	0.0	0.0	0.0	NA	0.0	0.0	0.0	0.0	0.0	0.0	0.0	0.0	0.0	0.0	0.0
NW-4	0.0	0.0	0.0	0.0	NA	0.0	0.0	0.0	0.0	0.0	0.0	0.0	0.0	0.0	0.0	0.0
NW-5	0.0	0.0	0.0	0.0	NA	0.0	0.0	0.0	0.0	0.0	0.0	0.0	0.0	0.0	0.0	0.0
NW-6	0.0	0.0	0.0	0.0	NA	0.0	0.0	0.0	0.0	0.0	0.0	0.0	0.0	0.0	0.0	0.0
Ext-1	0.0	0.0	0.0	0.0	NA	0.0	0.0	0.0	0.0	0.0	0.0	0.0	0.0	0.0	0.0	0.0
Ext-2	0.0	0.0	0.1	0.0	NA	0.0	0.0	0.0	0.0	0.1	0.0	0.0	0.0	0.0	0.0	0.0
Ext-3	0.9	0.0	0.5	0.7	NA	0.6	0.7	1.0	0.2	1.1	0.5	0.2	0.7	0.0	0.0	0.0
Ext-4	0.1	0.0	0.0	0.0	NA	0.2	0.2	0.2	0.0	0.3	0.2	0.0	0.2	0.0	0.0	0.0
Ext-5	0.0	0.0	0.0	0.0	NA	0.1	0.0	0.0	0.0	0.0	0.0	0.1	0.0	0.0	0.0	0.0
N-1	0.0	NA	NA	NA	NA	NA	NA	NA	NA	NA	NA	NA	NA	NA	NA	0.0
N-2	0.0	0.0	0.0	0.0	NA	0.0	0.0	0.0	0.0	0.0	0.0	0.0	0.0	0.0	0.0	0.0
N-3	0.0	0.0	0.0	0.0	NA	0.0	0.0	0.0	0.0	0.0	0.0	0.0	0.0	0.0	0.0	0.0
N-4	0.0	0.0	0.0	0.0	NA	0.0	0.0	0.0	NA	0.0	0.0	0.0	0.0	0.0	0.0	0.0
N-5	0.0	0.0	0.0	0.0	NA	0.0	NA	0.0	0.0	0.0	0.0	0.0	0.0	0.0	0.0	0.0
N-6	0.1	0.0	0.0	0.0	NA	NA	0.0	0.0	0.1	0.0	0.0	0.0	0.0	0.0	0.0	0.0
BS-1	0.7	0.2	0.5	0.5	NA	0.4	0.3	0.3	0.3	0.4	0.3	0.0	0.2	0.3	0.0	0.0

NA - Not Available

Measured in % Volume



Table 4 (continued)

Well	10/13	11/13	12/13	1/14	2/14	3/14	4/14	5/14	6/14	7/14	8/14	9/14	10/14	12/14	3/15	6/15
CWI-4	0.1	0.0	0.0	0.0	0.0	0.0	0.0	0.0	0.1	0.1	0.1	0.0	0.4	0.1	0.0	0.1
CWI-5	0.3	0.1	0.3	0.2	0.5	0.6	0.2	0.1	0.3	0.2	0.2	0.2	0.4	0.6	0.3	0.4
CWI-6	0.2	0.3	0.2	0.1	0.2	0.4	0.0	0.3	0.3	0.3	0.2	0.1	0.2	0.7	0.3	0.6
CWI-7	0.5	0.5	0.3	0.2	0.3	0.4	0.3	0.5	0.6	0.7	0.7	0.6	N/A	1.0	1.0	0.5
CWII-1	3.5	3.8	5.0	3.1	2.5	2.8	3.4	3.5	4.0	3.0	3.5	2.2	2.5	4.4	4.0	1.1
CWII-2	0.7	1.0	1.0	0.7	1.2	1.8	0.5	1.0	1.2	1.1	0.8	0.4	0.6	1.4	2.0	2.0
CWII-3	1.7	1.5	1.7	1.0	2.0	2.1	1.3	2.0	2.5	1.7	2.2	0.5	1.1	2.2	1.5	3.1
CWII-4	1.1	1.0	2.3	1.5	0.0	0.0	1.5	1.4	1.0	2.0	1.5	0.7	1.0	1.5	0.5	3.3
CWII-5	0.3	0.2	0.1	0.0	0.0	0.0	0.1	0.4	0.5	1.2	0.5	0.2	1.3	0.2	0.1	0.3
CWII-6	0.7	0.6	N/A	N/A	N/A	N/A	N/A	N/A	N/A	N/A	N/A	N/A	N/A	N/A	0.1	NA
CWII-7	0.1	0.1	0.1	0.0	0.0	0.0	0.0	0.0	0.0	0.1	0.0	0.0	0.2	0.1	0.2	0.1
CWII-8	0.0	0.0	0.0	0.0	0.0	0.0	0.0	0.0	0.0	0.0	0.0	0.0	0.2	0.1	1.0	0.0
CWII-9	0.2	0.2	0.1	0.0	0.0	0.0	0.1	0.2	0.2	0.4	0.3	0.2	0.3	0.1	0.7	0.2
NW-1	0.0	0.0	0.0	0.0	0.0	0.0	0.0	0.0	0.0	0.0	0.0	0.0	0.0	0.0	0.0	0.0
NW-2	0.0	0.0	0.0	0.0	0.0	0.0	0.0	0.0	0.0	0.0	0.0	0.0	0.0	0.0	0.0	0.0
NW-3	0.0	0.0	0.0	0.0	0.0	0.0	0.0	0.0	0.0	0.0	0.0	0.0	0.0	0.0	0.0	0.0
NW-4	0.0	0.0	0.0	0.0	0.0	0.0	0.0	0.0	0.0	0.0	0.0	0.0	0.0	0.0	0.0	0.0
NW-5	0.0	0.0	0.0	0.0	0.0	0.0	0.0	0.0	0.0	0.0	0.0	0.0	0.0	0.0	0.0	0.0
NW-6	0.0	0.0	0.0	0.2	0.0	0.0	0.0	0.0	0.0	0.0	0.0	0.0	0.0	0.0	0.0	0.0
Ext-1	0.0	0.0	0.0	0.1	0.0	0.0	0.0	0.0	0.0	0.0	0.0	0.0	0.0	0.0	0.0	0.0
Ext-2	0.1	0.0	0.0	0.1	0.0	0.0	0.0	0.0	0.1	0.1	0.0	0.0	0.1	0.4	0.2	0.2
Ext-3	1.0	0.1	0.7	0.0	0.1	0.2	0.5	0.7	0.5	0.1	0.1	0.0	0.0	0.2	0.2	1.7
Ext-4	0.2	0.2	0.2	0.1	0.0	0.0	0.2	0.2	0.1	0.0	0.0	0.1	0.0	0.2	0.0	0.0
Ext-5	0.1	0.1	0.0	0.0	0.0	0.0	0.0	0.0	0.0	0.0	0.0	0.0	0.0	0.0	0.0	0.0
N-1	0.0	0.0	N/A	N/A	N/A	N/A	N/A	N/A	N/A	N/A	N/A	N/A	N/A	N/A	0.0	NA
N-2	0.0	0.0	0.1	0.0	0.0	0.0	0.0	0.0	0.0	0.0	0.0	0.0	0.0	0.0	0.1	0.0
N-3	0.0	0.0	0.0	0.0	0.0	0.0	0.0	0.0	0.0	0.0	0.0	0.0	0.0	0.0	0.0	0.0
N-4	0.0	0.0	0.0	0.0	N/A	0.0	0.0	0.0	0.0	0.0	0.0	0.0	0.0	0.0	0.0	0.0
N-5	0.0	0.0	0.0	0.0	0.0	0.0	0.0	0.0	0.0	0.0	0.0	0.0	0.0	0.0	0.1	0.0
N-6	0.2	0.1	0.1	0.0	N/A	0.0	0.0	0.0	0.0	0.0	0.0	0.0	0.0	0.0	0.1	0.1
BS-1	0.2	0.2	0.4	0.2	0.3	0.1	0.2	0.3	0.2	0.4	0.3	0.2	0.3	0.2	0.0	0.5

NA - Not Available

Measured in % Volume

Table 4 (continued)

Well	9/15	12/15	3/16	6/16	9/16	12/16	3/17	6/17	9/17	12/17	3/18	6/18	9/18	12/18	3/19	6/19
CWI-4	0.2	0.1	0.0	0.0	0.0	0.0	0.0	0.1	0.0	0.0	0.0	0.0	0.0	0.0	0.0	0.0
CWI-5	0.4	0.5	0.3	0.3	0.1	0.0	0.0	0.2	0.4	0.1	0.0	0.0	0.2	0.0	0.0	0.0
CWI-6	0.3	NA	0.6	0.8	0.4	0.0	0.1	0.3	0.4	0.2	0.2	0.1	0.1	0.0	0.0	0.3
CWI-7	0.6	0.7	0.3	0.7	1.1	0.8	0.3	0.5	0.4	0.1	0.6	0.3	0.3	0.0	0.0	0.4
CWII-1	3.7	3.0	5.2	2.5	3.2	3.0	2.1	1.5	2.0	1.4	1.5	1.4	1.5	0.0	0.0	1.4
CWII-2	0.8	0.6	3.5	0.2	0.0	0.2	0.1	0.1	0.4	0.4	1.0	0.6	0.8	0.0	0.0	0.3
CWII-3	1.6	2.0	4.0	1.1	2.0	3.0	3.6	2.1	2.5	2.0	1.9	2.9	3.1	0.0	0.0	1.3
CWII-4	1.0	4.5	2.5	1.0	1.1	0.0	1.2	1.0	1.2	1.0	0.5	1.0	1.0	0.0	0.0	0.9
CWII-5	0.4	0.2	0.1	0.2	0.2	0.0	0.0	0.1	0.3	0.0	0.0	0.0	0.0	0.0	0.0	0.1
CWII-6	0.7	0.0	0.0	0.2	0.0	0.0	0.0	0.1	NA	NA	NA	NA	NA	NA	NA	NA
CWII-7	0.1	0.0	0.0	NA	0.0	0.0	0.0	0.0	0.0	0.0	0.0	0.0	NA	NA	0.0	0.9
CWII-8	0.0	0.1	0.0	0.0	0.0	0.0	0.0	0.0	0.0	0.0	0.0	0.0	0.0	0.0	0.0	0.0
CWII-9	0.2	0.0	0.0	0.1	0.1	0.0	0.0	0.0	0.2	0.0	0.0	0.0	0.0	0.0	0.0	0.0
NW-1	0.0	0.0	0.0	0.0	0.0	0.0	0.0	0.0	0.0	0.0	0.0	0.0	0.0	0.0	0.0	0.0
NW-2	0.0	0.0	0.0	0.0	0.0	0.0	0.0	0.0	0.0	0.0	0.0	0.0	0.0	0.0	0.0	0.0
NW-3	0.0	0.0	0.0	0.0	0.0	0.0	0.0	0.0	0.0	0.0	0.0	0.0	0.0	0.0	0.0	0.0
NW-4	0.0	0.0	0.0	0.0	0.0	0.0	0.0	0.0	0.0	0.0	0.0	0.0	0.0	0.0	0.0	0.0
NW-5	0.0	0.0	0.0	0.0	0.0	0.0	0.0	0.0	0.0	0.0	0.0	0.0	0.0	0.0	0.0	0.0
NW-6	0.0	0.0	0.0	0.0	0.0	0.0	0.0	0.0	0.0	0.0	0.0	0.0	0.0	0.0	0.0	0.0
Ext-1	0.1	0.1	0.0	0.0	0.0	0.0	0.0	0.0	NA	0.0	0.0	0.0	0.0	0.0	0.0	0.0
Ext-2	0.1	0.2	0.1	0.1	0.0	0.0	0.1	0.0	NA	0.0	0.0	0.0	0.0	0.0	0.0	0.0
Ext-3	1.2	2.0	0.2	0.1	0.4	0.3	0.5	0.0	NA	0.0	0.0	0.0	0.0	0.0	0.0	0.0
Ext-4	0.1	0.4	0.3	0.2	0.1	0.0	0.1	0.0	0.1	0.0	0.0	0.0	0.0	0.0	0.0	0.0
Ext-5	0.1	0.1	0.1	0.0	0.1	0.1	0.0	0.1	0.0	0.0	0.0	0.0	0.0	0.0	0.0	0.0
N-1	0.0	0.0	0.0	0.0	0.0	NA	NA	NA	NA	0.0	NA	NA	NA	0.0	0.0	NA
N-2	0.0	0.0	0.0	0.0	0.0	0.0	0.0	0.0	0.0	0.0	0.0	0.0	NA	0.0	0.0	0.0
N-3	0.0	0.0	0.0	0.0	0.0	NA	0.0	0.0	0.0	0.0	0.0	0.0	0.0	0.0	0.0	0.0
N-4	0.0	0.0	0.0	0.0	0.0	0.0	0.0	0.0	0.0	0.0	0.0	0.0	0.0	0.0	0.0	0.0
N-5	0.0	0.0	0.0	0.0	0.0	0.0	0.0	0.0	0.1	0.0	0.0	0.0	0.1	0.0	0.0	0.0
N-6	0.0	0.0	0.0	0.0	0.0	0.0	0.0	0.0	0.05	0.0	0.0	0.0	0.00	0.0	0.0	0.0
BS-1	0.7	0.5	0.5	0.2	0.1	0.0	0.0	0.0	0.1	0.0	0.0	0.0	0.0	0.0	0.0	0.0

NA - Not Available

Measured in % Volume

Table 4 (continued)

Well	9/19	12/19	3/20	6/20	9/20	12/20	3/21	6/21	9/21	12/21	3/22	6/22	9/22	12/22	3/23	6/23
CWI-4	0.0															
CWI-5	0.3															
CWI-6	0.2															
CWI-7	0.3															
CWII-1	1.1															
CWII-2	0.2															
CWII-3	0.9															
CWII-4	0.7															
CWII-5	0.3															
CWII-6	0.3															
CWII-7	NA															
CWII-8	0.0															
CWII-9	0.1															
NW-1	0.3															
NW-2	0.0															
NW-3	0.0															
NW-4	0.1															
NW-5	0.1															
NW-6	0.1															
Ext-1	0.0															
Ext-2	0.0															
Ext-3	0.1															
Ext-4	0.0															
Ext-5	0.0															
N-1	0.0															
N-2	0.0															
N-3	0.0															
N-4	0.0															
N-5	0.0															
N-6	0.0															
BS-1	0.2															

NA - Not Available

Measured in % Volume

# APPENDIX 1

**Landfill Gas Control Well Vacuum Data**  
**East Northport Landfill, East Northport, New York**  
for period of record between January, 2006 and September, 2019

Well	1/06	2/06	3/06	4/06	5/06	6/06	7/06	8/06	9/06	10/06	11/06	12/06	1/07	2/07	3/07	4/07	5/07	6/07	7/07
CWI-4	-2.9	-2.6	-2.6	-3.0	-2.6	-0.1	-3.3	-5.2	-1.2	-2.8	-3.9	-4.2	-3.0	-3.6	-3.0	-3.0	-2.8	-2.8	-2.6
CWI-5	-3.3	-3.1	-3.2	-2.6	-2.8	0.0	-2.8	-1.9	-3.4	-2.3	-4.4	-4.5	-3.4	-3.6	-3.2	-3.2	-2.9	-2.9	-2.7
CWI-6	-3.5	-3.1	-3.0	-3.0	-2.9	-0.3	-4.0	-6.4	-2.9	-2.9	-4.7	-4.3	-3.5	-3.7	-3.2	-3.2	-3.0	-2.9	-2.7
CWI-7	-3.0	-3.0	-2.8	-2.8	-2.8	-0.4	-2.8	-2.4	-3.1	-2.8	-4.5	-4.1	-3.3	NA	-3.0	-2.9	-2.8	-2.7	-2.5
CWII-1	-3.1	-3.0	-3.0	-2.9	-2.7	0.0	-3.2	-6.3	-2.9	-2.6	-4.3	-4.3	-3.4	-3.4	-2.7	-3.0	-2.7	-2.6	-2.5
CWII-2	-3.0	-2.9	-2.7	-2.8	-2.7	-0.5	-3.5	-5.9	-5.4	-2.6	-4.2	-3.9	-3.3	-3.4	-2.6	-2.8	-2.6	-2.5	-2.4
CWII-3	-3.0	-2.9	-2.9	-2.7	-2.5	0.0	-2.6	-6.8	-0.6	-2.7	-4.3	-4.1	-3.1	-3.4	-2.7	NA	NA	-2.6	-2.4
CWII-4	-2.8	-2.8	-2.4	-2.6	-2.7	-0.9	-3.2	-6.8	-2.7	-2.6	-5.0	-4.0	-3.1	-3.7	-2.7	-2.6	-2.5	-2.5	-2.3
CWII-5	-2.8	-2.5	-2.6	-2.7	-2.1	0.0	-2.3	-7.0	-2.6	-2.6	-0.3	-4.2	-3.2	-3.6	-2.6	-2.7	-2.5	-2.4	-2.3
CWII-6	-1.4	-1.4	-1.5	-1.6	-1.9	-0.1	-1.0	-0.2	-1.7	-1.4	-1.7	-2.3	-2.0	-0.2	-1.7	-1.6	-1.7	-1.7	-1.6
CWII-7	-1.2	-1.0	-1.1	-0.7	-1.4	-0.2	-0.8	-0.2	-1.3	-1.1	-1.5	-1.7	-1.7	-1.3	-1.4	-1.4	-1.2	-1.3	-1.1
CWII-8	0.0	0.0	-0.2	0.0	0.0	-0.1	0.0	0.0	0.0	0.0	0.0	0.0	-0.1	-0.1	0.0	-0.1	-0.1	-0.1	0.0
CWII-9	-0.9	-0.6	-0.7	-1.0	-0.8	-0.9	-0.6	-0.2	-0.9	-0.8	-0.9	-1.2	-1.4	-1.0	-1.0	-1.1	-0.9	-0.9	-0.8
NW-1	-2.8	-2.8	-2.8	-2.6	-2.2	-2.4	-3.2	-4.0	-3.7	-2.5	-3.2	-3.9	-2.9	-3.4	-3.0	-2.9	-2.8	-2.6	-2.1
NW-2	-3.3	-2.9	-2.7	-2.6	-2.9	-2.7	-3.4	-4.5	-3.4	-3.2	4.2	-4.5	-3.3	-3.7	-3.2	-3.2	-3.1	-3.9	-2.8
NW-3	-2.8	-2.9	-2.8	-2.7	-2.7	-2.8	-3.2	-4.0	-3.2	-2.8	-4.0	-4.0	-2.3	-3.4	-2.9	-3.0	-2.7	-2.6	-2.6
NW-4	-2.9	-3.0	-3.0	-3.0	-2.7	-2.6	-2.4	-3.6	-2.8	-2.6	-4.0	-3.6	-2.8	-3.3	-2.6	-2.9	-2.6	-2.4	-2.4
NW-5	-2.3	-2.9	-2.6	-2.6	-1.2	-2.5	-2.2	-2.6	-2.3	-2.1	-3.6	-2.9	-2.3	-3.0	-2.2	-2.6	-2.2	-1.9	-2.1
NW-6	-2.2	-3.0	-2.9	-3.0	-1.6	-2.1	-2.8	-2.8	-2.5	-2.8	-3.1	-3.0	-2.3	-2.6	-2.3	-1.6	-2.3	-2.1	-2.0
Ext-1	0.0	0.0	0.0	-0.2	-0.2	-0.3	0.0	-0.7	-0.1	-0.1	-3.6	-3.4	-2.7	-0.1	0.0	0.0	0.0	-1.7	-0.1
Ext-2	-0.6	-0.8	-0.9	-0.8	-0.8	-0.6	-0.1	-3.0	-0.9	-0.7	-3.4	NA	-2.1	-1.1	-0.8	-0.9	-0.9	-2.1	-0.9
Ext-3	-2.1	-2.8	-2.7	-2.6	-2.2	-1.9	-0.5	-3.3	-2.3	-2.1	-3.3	-3.2	-2.3	-2.9	-2.2	-2.5	-2.3	-2.3	-2.1
Ext-4	-2.0	-1.9	-1.8	-1.6	-2.1	-2.0	-0.6	-2.0	-2.0	-2.1	-3.2	-3.5	-2.0	-2.7	-2.2	-2.3	-2.1	-0.9	-2.0
Ext-5	-0.8	-1.6	-1.4	-1.6	-1.7	-1.5	-0.2	-0.1	-1.6	-1.6	-2.4	-2.6	-2.0	-2.3	-2.0	-2.1	-1.9	-0.1	-1.7
N-1	-0.3	-0.2	-0.4	-0.4	-0.6	0.0	-1.0	-2.8	-1.5	-0.2	-0.2	-0.2	0.0	0.1	0.0	-0.2	-0.1	0.0	-0.1
N-2	-0.4	-0.4	-0.8	-0.7	NA	0.0	-0.1	-0.9	-0.3	-0.6	-0.5	-0.4	-0.3	-0.4	-0.4	-0.6	-0.3	-0.3	-0.5
N-3	-0.1	-0.1	0.0	-0.2	-0.1	-0.1	0.0	-0.3	-0.1	-0.1	-0.1	-0.2	0.0	0.0	-0.1	-0.1	-0.1	-0.1	-0.1
N-4	0.0	0.0	0.0	-0.1	-0.1	-0.1	0.0	-0.2	-0.1	-0.2	-0.1	-0.1	0.0	-0.2	-0.8	-0.1	-0.1	0.0	-0.1
N-5	-0.1	-0.1	0.0	-1.0	-0.1	-0.1	-0.1	-0.2	-0.2	-0.1	-0.1	-0.2	0.0	-0.2	-0.1	-0.1	-0.1	-0.1	-0.1
N-6	NA	-0.8	-0.1	-0.2	NA	0.0	-1.1	-0.2	-0.9	-1.0	NA	NA	NA	NA	NA	-1.1	-0.8	-0.9	-0.9
BS-1	-4.9	-4.2	-5.1	-4.6	-4.6	-3.1	-8.5	-10.1	-6.1	-5.1	-7.3	-7.2	4.0	-5.6	-5.0	-5.1	-4.8	-7.3	-4.3

Measured in inches of H2O

NA - Not Available

**Landfill Gas Control Well Vacuum Data**  
**East Northport Landfill, East Northport, New York**  
for period of record between January, 2006 and September, 2019

Well	8/07	9/07	10/07	11/07	12/07	1/08	2/08	3/08	4/08	5/08	6/08	7/08	8/08	9/08	10/08	11/08	12/08	1/09	2/09
CWI-4	-2.6	-2.5	-2.5	-3.1	-3.0	-2.9	-3.7	-3.7	-1.8	-3.4	-1.8	-2.1	-1.6	-1.9	-1.2	-1.4	0.0	-3.0	-2.8
CWI-5	-2.7	-2.8	-2.7	-3.0	-3.5	-3.1	-3.7	-3.5	-3.0	-2.9	-1.8	-2.3	-1.9	-2.1	-1.3	-1.4	0.0	-3.4	-2.8
CWI-6	-2.6	-2.2	-2.4	-2.9	-3.4	-3.2	-3.3	-3.4	-3.1	-2.9	-1.9	-2.4	-1.8	-2.1	-1.3	-1.2	-0.1	-3.6	-3.0
CWI-7	-2.5	-2.5	-2.4	-2.5	-3.1	-3.0	-3.7	-3.3	-2.7	-2.3	-1.8	-2.4	-1.8	-2.0	-1.1	-0.6	NA	-3.6	-2.9
CWII-1	-2.3	-1.5	-2.4	-2.4	-3.0	-2.9	-4.1	-3.2	-2.6	-2.6	-1.7	-2.4	-1.7	-2.0	-1.2	-1.1	-0.1	-3.5	-2.9
CWII-2	-2.3	-2.3	-2.4	-2.5	-3.5	-2.9	-3.2	-3.6	-2.6	-2.5	-1.6	-2.4	-1.7	-2.0	-1.2	-1.6	-0.1	-3.0	-2.8
CWII-3	-2.3	-2.4	-2.3	-2.4	-2.9	-2.9	-3.7	-3.1	-3.1	-2.3	-1.7	-2.7	-1.6	-2.0	-1.1	-0.9	-0.1	-3.6	-2.7
CWII-4	-3.2	-2.1	-2.2	-2.3	-3.6	-2.9	-1.8	-3.5	-2.5	-2.1	-1.6	-2.4	-1.6	-1.9	-1.1	-1.1	NA	-3.4	-2.7
CWII-5	-2.2	-2.4	-2.2	-2.6	-3.5	-2.9	-3.0	-3.1	-2.8	-2.4	-1.6	-2.5	-1.6	-1.9	-1.1	-1.0	-0.2	-3.5	-2.7
CWII-6	-1.6	-1.5	-1.5	-1.3	-0.2	-2.0	-1.2	-2.2	-1.6	-1.7	-1.2	0.0	-1.6	-1.6	-0.7	-0.8	NA	0.0	-1.6
CWII-7	-1.2	-1.1	-1.2	-1.1	-0.3	-1.5	-1.2	-1.7	-1.2	-1.3	-0.9	0.0	-1.2	-1.1	-0.7	-0.6	-0.2	0.0	-1.2
CWII-8	0.0	0.0	-0.1	0.0	0.0	0.0	-0.1	0.0	0.0	-0.1	-0.1	-0.1	0.0	0.0	-0.1	0.0	-0.1	0.0	0.0
CWII-9	-0.2	-0.9	-0.9	-0.9	-0.6	-1.1	-0.2	-0.2	-0.9	-0.9	-0.6	0.0	-0.6	-0.8	-0.6	-0.5	-0.2	0.0	-0.9
NW-1	-2.6	-2.4	-2.5	-2.5	-2.9	-2.8	-3.0	-3.1	-2.7	-2.8	-1.6	-1.9	-1.8	-1.9	-1.1	-1.2	-1.6	-2.9	-2.6
NW-2	-2.8	-1.7	-2.9	-3.1	-3.3	-3.1	-3.4	-3.8	-2.9	-3.2	-2.1	-2.4	-1.7	-2.0	-1.1	-0.8	-1.4	-3.1	-3.4
NW-3	-2.5	-2.0	-2.4	-2.5	-2.8	-2.7	-4.3	-3.1	-2.7	-2.1	-1.8	-2.1	-1.3	-1.8	-1.1	-0.7	-1.0	-2.7	-2.7
NW-4	-2.2	-2.2	-2.3	-2.2	-2.6	-2.4	-3.4	-2.8	-3.1	-2.9	-1.6	-1.9	-1.5	-1.7	-1.0	-1.0	-0.9	-2.3	-2.4
NW-5	-1.8	-1.8	-1.9	-2.0	-2.1	-2.1	-2.5	-2.2	-2.2	-0.9	-1.4	-1.6	-1.2	-1.5	-0.8	-0.6	-1.2	-2.1	-2.0
NW-6	-1.8	-1.8	-1.9	-2.2	-2.2	-2.1	-2.4	-2.4	-2.1	-2.1	-1.3	-1.6	-1.2	-1.4	-0.9	-0.7	-1.3	-2.3	-2.0
Ext-1	-0.1	0.0	0.0	-0.1	-0.1	-2.1	-0.1	-0.1	0.0	-0.1	0.0	-0.1	-1.1	0.0	0.0	-0.1	-0.4	0.0	-0.1
Ext-2	-0.7	-0.8	-0.7	-0.7	-0.9	-0.9	-1.0	-1.0	-0.9	-2.2	-0.9	-0.7	-1.0	-0.5	-0.5	-0.4	-0.7	-0.9	-0.8
Ext-3	-2.1	-2.0	-1.9	-1.9	-2.3	-2.2	-2.6	-2.7	-2.2	-2.2	-1.6	-1.7	-0.6	-1.4	-0.9	-0.7	-0.3	-2.1	-2.0
Ext-4	-1.9	-1.9	-2.2	-1.9	-2.2	-2.1	-2.4	-2.3	-1.9	-2.0	-1.4	-1.1	-1.7	-1.5	-0.9	-0.6	-1.1	-2.0	-1.8
Ext-5	-1.6	-1.5	-1.7	-1.5	-1.9	-1.8	-2.0	-2.1	-1.8	-1.8	-1.1	-0.4	-0.9	-1.2	-0.8	-1.0	-1.4	-1.8	-1.5
N-1	-0.3	-0.2	-0.2	-0.2	-0.2	-0.1	-0.3	-0.2	-0.2	-0.1	-0.3	-0.2	-0.2	-0.2	NA	NA	NA	NA	-0.2
N-2	-0.6	-0.5	-0.7	-0.6	-0.6	-0.6	NA	-0.4	-0.6	-0.7	-0.5	-0.5	-0.6	-0.5	-0.3	-0.5	-0.3	-0.7	-0.7
N-3	-0.2	-0.1	-0.2	0.0	-0.2	-0.1	-0.2	-0.1	-0.1	-0.1	-0.1	-0.3	-0.1	-0.1	-0.2	-0.1	-0.2	-0.2	-0.1
N-4	-0.1	-0.1	-0.1	0.0	-0.2	-0.1	-0.2	0.0	-0.1	-0.1	-0.1	-0.1	-0.1	-0.1	-0.2	-0.1	NA	-0.2	-0.1
N-5	-0.1	-0.1	-0.2	0.0	-0.1	-0.1	-0.1	-0.1	-0.1	-0.2	-0.2	-0.1	-0.2	-0.1	-0.2	-0.1	NA	-0.2	-0.1
N-6	-0.9	-0.8	-0.9	NA	NA	NA	NA	NA	NA	NA	NA	NA	NA	-0.8	NA	NA	NA	-0.1	-0.8
BS-1	-5.6	0.3	-4.4	-4.7	-5.1	-4.5	-5.0	-5.2	-4.2	-4.8	-2.8	-3.2	0.1	-3.0	-1.7	-21.7	0.1	-4.1	0.5

Measured in inches of H2O

NA - Not Available

**Landfill Gas Control Well Vacuum Data**  
**East Northport Landfill, East Northport, New York**  
for period of record between January, 2006 and September, 2019

Well	3/09	4/09	5/09	6/09	7/09	8/09	9/09	10/09	11/09	12/09	1/10	2/10	3/10	4/10	5/10	6/10	7/10	8/10	9/10
CWI-4	-2.5	-2.6	-2.6	-2.9	-2.5	-1.8	-2.3	-2.1	-2.0	-0.75	-0.73	NA	-0.98	-0.60	-0.63	-0.65	-0.76	-0.75	-0.76
CWI-5	-2.7	-1.9	-1.9	-3.3	-2.6	-2.6	-2.4	-2.3	-2.0	-8.60	-1.00	-0.78	-1.13	-0.64	-0.69	-0.70	-0.82	-0.82	-0.82
CWI-6	-2.8	-2.8	-2.8	-3.3	-2.5	-2.6	-2.4	-2.1	-1.8	-8.70	NA	-0.76	-1.18	-0.57	-0.68	-0.69	NA	-0.80	-0.82
CWI-7	-2.7	-2.0	-2.0	-3.4	-2.5	-2.4	-2.3	NA	NA	NA	NA	NA	NA	NA	NA	NA	NA	NA	NA
CWII-1	0.0	-2.7	-2.7	-3.2	-2.5	-2.3	-2.1	-2.0	-2.1	-2.00	-0.84	-0.71	-1.16	-0.59	-0.63	-0.62	-0.71	-0.67	-0.71
CWII-2	-2.5	-2.1	-2.1	-3.0	-2.9	-2.2	-2.1	-1.9	-2.0	-1.90	-0.81	-0.68	-1.12	-0.56	-0.59	-0.60	-0.69	-0.67	-0.70
CWII-3	-2.6	-3.0	-3.0	-3.0	-2.6	-2.4	-2.1	-1.9	-1.8	-1.90	-0.86	-0.69	-1.17	-0.58	-0.60	-0.61	-0.04	-0.69	-0.72
CWII-4	-2.6	-3.1	-3.1	-4.0	-2.6	-2.0	-2.1	-2.8	-2.5	-2.34	-0.84	-0.68	-0.12	-0.57	-0.58	-0.60	-0.68	-0.66	-0.70
CWII-5	-2.6	-2.5	-2.5	-3.4	-2.4	-2.2	-2.1	-1.8	-1.6	-1.81	-0.84	-0.68	NA	-0.57	-0.59	-0.61	-0.69	-0.67	-0.71
CWII-6	-1.9	NA	NA	NA	NA	NA	-1.3	NA	NA	NA	NA	NA	NA	NA	NA	NA	NA	NA	NA
CWII-7	-1.5	-2.2	-2.2	0.0	-1.4	-1.5	-1.2	-1.0	-1.0	-1.11	0.00	-0.35	-0.02	-0.32	-0.32	-0.35	-0.45	-0.43	-0.46
CWII-8	0.0	-0.2	-0.2	0.0	-0.1	-0.1	0.0	0.0	0.0	-0.20	0.00	0.00	0.00	0.00	0.00	-0.02	-0.30	0.00	-0.03
CWII-9	-1.0	-1.0	-1.0	-0.1	-1.0	-1.0	-0.9	-0.6	-0.3	-0.20	-0.03	0.00	-0.02	-2.20	-0.04	-0.26	0.00	-0.29	-0.10
NW-1	-2.3	-2.6	-2.6	-2.7	-2.3	-3.4	-2.0	-2.0	-1.8	NA	-0.73	-0.23	-0.97	-0.59	-0.63	-0.63	-0.76	-0.50	-0.75
NW-2	-2.7	-2.8	-2.8	-2.3	-2.6	-2.6	-2.4	-2.1	-2.0	-0.60	-0.80	-0.42	-1.08	-0.64	-0.70	-0.53	-0.53	-0.85	-0.83
NW-3	-2.3	-2.2	-2.2	-2.7	-2.3	-2.2	-2.2	0.0	0.0	0.00	-0.72	-0.40	-1.01	-0.58	-0.62	-0.53	-0.76	-0.77	-0.72
NW-4	-2.1	-2.2	-2.2	-2.5	-2.2	-2.1	-2.0	0.0	-0.1	-0.12	-0.65	-0.50	-0.89	-0.54	-0.55	-0.54	-0.68	-0.66	-0.64
NW-5	-1.8	-2.1	-2.1	-2.0	-1.8	-1.8	-1.6	0.0	-0.1	-0.70	-0.56	-0.51	-0.74	-0.43	-0.45	-0.50	-0.55	-0.56	-0.52
NW-6	-1.8	-1.2	-1.2	-2.1	-1.8	-1.9	-1.7	-0.1	0.0	NA	-0.55	-0.39	-0.78	-0.41	-0.46	-0.51	-0.09	-0.59	-0.53
Ext-1	-0.1	-1.0	-1.0	-0.2	-1.6	-1.7	-0.1	0.0	0.0	-0.06	-0.05	0.00	0.02	0.00	-0.01	-0.02	-0.51	-0.02	0.00
Ext-2	-0.8	-0.8	-0.8	-1.0	-1.8	-0.9	-0.7	-0.1	0.0	-0.24	-0.20	-0.20	-0.38	-0.20	-0.21	-0.23	-0.50	-0.26	-0.23
Ext-3	-1.9	-1.2	-1.2	-2.1	-1.9	-0.1	-1.6	-0.1	-0.1	-0.56	-0.54	-0.49	-0.75	-0.44	-0.46	-0.49	-0.57	-0.58	-0.51
Ext-4	-1.9	-1.8	-1.8	-2.0	-0.8	-1.7	-1.4	-0.1	-0.1	-0.57	-0.52	-0.43	-0.74	-0.44	-0.45	-0.48	-0.57	-0.56	-0.47
Ext-5	-1.9	-0.8	-0.8	-1.6	0.0	-1.5	-1.4	-0.1	-0.1	-0.41	-0.46	-0.39	-0.64	-0.39	-0.40	-0.43	-0.50	-0.50	-0.12
N-1	-0.3	-0.3	-0.3	NA	-0.2	-0.2	-0.1	-0.1	NA	-0.72	-0.09	-0.60	NA	0.00	0.00	-0.03	-0.02	-0.05	-0.25
N-2	-0.6	-0.6	-0.6	-0.4	-0.4	-0.5	-0.7	-0.4	-0.5	-0.80	-0.07	-0.04	NA	0.00	-0.02	-0.03	-0.03	-0.05	-0.15
N-3	-0.2	-0.2	-0.2	-0.2	-0.2	-0.2	-0.2	0.0	0.0	-0.73	-0.06	-0.04	-0.08	-0.02	-0.03	-0.03	-0.03	-0.02	-0.04
N-4	-0.1	-0.2	-0.2	-0.1	-0.2	-0.3	-0.2	0.0	0.0	-0.64	-0.06	NA	-0.07	0.00	-0.02	-0.03	-0.02	-0.02	-0.04
N-5	-0.1	-0.2	-0.2	-0.1	-1.0	-0.1	-0.1	0.0	0.0	-0.55	-0.06	-0.05	-0.07	0.00	-0.02	-0.04	-0.02	-0.02	-0.05
N-6	-1.0	-1.2	-1.2	-0.1	-0.2	-1.0	-0.8	NA	NA	-0.53	NA	NA	NA	NA	NA	NA	NA	NA	-0.31
BS-1	-4.1	-3.9	-3.9	-0.3	-4.0	-5.0	-3.9	-4.0	-3.2	-1.21	-1.35	-1.21	-1.56	-1.00	-0.12	-1.12	-1.44	-1.43	-1.43

Measured in inches of H2O

NA - Not Available

**Landfill Gas Control Well Vacuum Data**  
**East Northport Landfill, East Northport, New York**  
for period of record between January, 2006 and September, 2019

Well	10/10	11/10	1/12	2/12	3/12	4/12	5/12	6/12	7/12	8/12	9/12	10/12	11/12	12/12	1/13	2/13	3/13	4/13	5/13
CWI-4	-0.78	-0.80	-0.97	-0.81	-0.86	-0.86	-1.32	-1.29	-0.61	-0.97	-0.90	NA	-0.86	-0.91	-0.88	-0.66	-1.29	-0.86	-0.70
CWI-5	-0.55	-0.89	-1.12	-0.82	-0.72	-0.72	-1.44	-1.40	-0.66	-1.05	-0.98	NA	-0.98	-1.05	-0.99	-1.14	-1.49	-0.94	-0.78
CWI-6	-0.16	-0.91	-1.16	-0.81	-0.93	-0.93	-1.40	-1.39	-0.66	-1.07	-0.93	NA	-1.02	-1.07	-0.99	-1.19	-1.56	-0.95	-0.77
CWI-7	-0.85	-0.83	-1.10	-0.76	-1.02	-1.02	-1.06	-0.78	-0.62	NA	NA	NA	-0.55	-1.01	-0.84	-1.05	-1.29	-0.73	-0.68
CWII-1	-0.79	-0.77	-0.78	-0.61	-0.71	-0.71	-1.02	-1.09	-0.57	-0.88	-0.71	NA	-0.47	-0.40	-0.23	-1.04	-1.54	-0.32	-0.20
CWII-2	-0.72	-0.76	-1.05	-0.71	-0.91	-0.91	-1.10	-1.07	-0.57	-0.88	-0.91	NA	-0.91	-0.99	-0.86	-1.06	-1.40	-0.83	-0.68
CWII-3	-0.71	-0.76	-1.11	-0.72	-0.69	-0.69	-1.15	-1.18	-0.47	-0.91	-0.99	NA	-0.98	-1.07	-0.90	-1.15	-1.50	-0.86	-0.70
CWII-4	-0.74	-0.77	-1.09	-0.71	-0.94	-0.94	-1.10	-1.06	-0.56	-0.89	-0.95	NA	-0.95	-1.04	-0.88	-1.13	-1.46	-0.85	-0.68
CWII-5	-0.72	-0.77	-1.11	-0.70	-0.89	-0.89	-1.11	-1.07	-0.56	-0.90	-0.98	NA	-0.97	-1.06	-0.89	0.00	-1.51	-0.86	-0.88
CWII-6	-0.73	NA	-0.02	N/A	N/A	N/A	NA	NA	NA	NA	NA	NA	NA	NA	NA	NA	NA	NA	NA
CWII-7	-0.40	-0.44	-0.03	0.00	0.00	0.00	-0.53	-0.50	-0.34	-0.55	-0.03	NA	0.00	-0.03	-0.46	0.00	0.00	0.00	-0.31
CWII-8	-0.02	-0.02	0.00	0.00	-0.09	-0.09	0.00	0.02	0.00	0.00	-0.02	NA	0.00	-0.04	0.00	0.00	0.00	0.00	0.00
CWII-9	-0.29	-0.30	-0.02	0.00	0.00	0.00	-0.35	-0.32	-0.23	-0.36	-0.03	NA	0.00	-0.04	-0.29	0.00	0.00	0.00	-0.22
NW-1	-0.80	-0.79	-0.98	-0.74	-0.76	-0.76	-1.30	-1.30	-0.62	-0.97	-0.85	NA	-0.84	-0.92	-0.90	-0.98	-1.25	-0.87	-0.68
NW-2	-0.88	-0.89	-1.06	-0.81	-0.72	-0.72	-1.52	-1.51	-0.69	-1.11	-0.96	NA	-0.96	-0.99	-1.00	-1.10	-1.40	-0.95	-0.75
NW-3	-0.78	-0.76	-0.93	-0.73	-0.70	-0.70	-1.31	-1.47	-0.61	-0.96	-0.16	NA	-0.84	-0.60	-0.87	-1.11	-1.25	-0.85	-0.69
NW-4	-0.20	-0.69	-0.85	-0.66	-0.61	-0.61	-1.18	-1.18	-0.58	-0.85	-0.83	NA	-0.74	-0.82	-0.82	-1.09	-1.15	-0.78	-0.68
NW-5	-0.55	-0.59	-0.69	-0.54	-0.49	-0.49	-0.91	-0.92	-0.46	-0.69	-0.64	NA	-0.62	-0.68	-0.66	-0.75	-0.89	-0.64	-0.52
NW-6	-0.57	-0.51	-0.73	-0.56	-0.62	-0.62	-0.99	-1.03	-0.54	-0.72	-0.67	NA	-0.63	-0.67	-0.66	-0.04	-0.97	-0.81	-0.55
Ext-1	-0.21	-0.03	0.00	0.00	-0.28	-0.28	-0.61	-0.02	-0.11	-0.61	-0.06	NA	-0.02	-0.09	-0.82	-0.02	-0.04	-0.04	-0.46
Ext-2	0.00	-0.26	-0.28	-0.57	-0.41	-0.41	-0.55	-0.39	-0.22	-0.72	-0.28	NA	-0.26	-0.35	-0.36	-0.29	-0.39	-0.29	-0.53
Ext-3	-0.52	-0.59	-0.76	-0.56	-0.51	-0.51	-0.58	-1.00	-0.49	-0.75	-0.67	NA	-0.64	-0.71	-0.70	-0.80	-1.02	-0.69	-0.20
Ext-4	-0.18	-0.60	-0.74	-0.53	-0.44	-0.44	-0.60	-0.99	-0.49	-0.30	-0.70	NA	-0.62	-0.69	-0.68	-0.24	-0.99	-0.67	-0.40
Ext-5	-0.40	-0.45	-0.61	-0.32	-0.30	-0.30	-0.42	-0.84	-0.44	-0.04	-0.50	NA	-0.56	-0.23	-0.59	-0.34	-0.87	-0.58	-0.32
N-1	-0.33	-0.08	-0.03	0.00	-0.02	-0.02	-0.03	0.20	NA	NA	NA	NA	NA	NA	NA	NA	NA	NA	NA
N-2	-0.15	-0.04	-0.04	N/A	-0.04	-0.04	-0.04	0.00	-0.02	-0.04	-0.09	NA	0.00	-0.07	-0.03	-0.03	-0.03	0.00	-0.04
N-3	-0.02	-0.04	-0.03	0.00	-0.06	-0.06	-0.03	0.00	-0.03	-0.03	-0.06	NA	0.00	-0.05	-0.02	0.00	-0.03	0.00	-0.04
N-4	-0.02	0.00	-0.04	0.00	-0.01	-0.01	0.00	0.00	0.00	-0.04	-0.05	NA	0.00	0.00	0.00	NA	0.00	0.00	-0.03
N-5	-0.02	-0.03	-0.04	0.00	-0.03	-0.03	-0.03	0.00	-0.02	-0.03	-0.05	NA	0.00	NA	-0.03	0.00	-0.03	0.00	-0.03
N-6	-0.29	-0.31	0.00	0.00	-0.26	-0.26	-0.34	-0.32	-0.24	-0.35	-0.04	NA	NA	-0.06	-0.29	0.00	0.00	0.00	-0.22
BS-1	-1.46	-1.55	-1.74	-1.30	-1.13	-1.13	-3.01	-3.11	-1.19	-2.01	-1.59	NA	-1.75	-1.64	-1.71	-1.75	-2.25	-1.52	-1.18

Measured in inches of H2O

NA - Not Available



**Landfill Gas Control Well Vacuum Data**  
**East Northport Landfill, East Northport, New York**  
for period of record between January, 2006 and September, 2019

Well	6/13	7/13	8/13	9/13	10/13	11/13	12/13	1/14	2/14	3/14	4/14	5/14	6/14	7/14	8/14	9/14	10/14	12/14	3/15
CWI-4	-0.80	-0.82	-1.35	-1.33	-1.39	-1.39	-1.59	-1.64	-1.11	-1.98	-1.13	-0.95	-1.06	-0.62	-0.61	-0.64	-0.92	-1.42	-1.63
CWI-5	-0.88	-1.02	-1.52	-1.54	-1.55	-1.60	-1.91	-1.90	-1.30	-1.72	-1.28	-1.28	-1.19	-0.69	-0.69	-0.70	-1.05	-1.66	-1.97
CWI-6	-0.87	-0.84	-1.50	-1.48	-1.54	-1.59	-2.00	-1.99	-1.36	-1.87	-1.25	-1.02	-1.21	-0.69	-0.76	-0.70	-1.12	-1.76	-2.05
CWI-7	-0.84	-0.79	-1.35	-1.34	-0.84	-0.45	-1.79	-1.81	-1.28	-1.74	-1.14	-1.14	-1.07	-0.63	-0.48	-0.64	N/A	-1.67	-0.05
CWII-1	-0.79	-0.75	-1.36	-1.32	-1.28	-1.41	-1.86	-1.79	-1.33	-1.69	-1.15	-1.16	-1.04	-0.62	-0.63	-0.64	-1.02	-1.67	-2.00
CWII-2	-0.78	-0.73	-1.26	-1.22	-1.22	-1.27	-1.72	-1.70	-1.24	-1.63	-1.09	-1.18	-1.02	-0.60	-0.61	-0.62	-0.97	-1.55	-1.80
CWII-3	-0.80	-0.75	-1.44	-1.29	-1.37	-1.51	-1.88	-1.87	-1.34	-1.55	-1.15	-0.77	-1.05	-0.58	-1.38	-0.64	-0.87	-1.69	-2.01
CWII-4	NA	-0.75	-1.36	-1.21	-1.29	-1.29	-1.85	-1.85	0.00	-0.01	-1.13	-1.15	-1.02	-0.60	-0.55	-0.62	-1.04	-1.66	-0.42
CWII-5	-0.03	-0.73	-1.27	-1.32	-1.29	-1.33	-1.54	-1.89	0.00	0.00	-1.13	-1.27	-1.09	-0.66	-0.62	-0.63	-1.05	-1.70	0.00
CWII-6	NA	NA	NA	-0.71	-0.72	-0.51	N/A	N/A	N/A	N/A	N/A	N/A	N/A	N/A	N/A	N/A	N/A	N/A	0.00
CWII-7	-0.39	-0.45	-0.52	-0.46	-0.54	-0.35	-0.04	0.00	0.00	-0.01	-0.48	-0.30	-0.40	-0.36	-0.39	-0.39	-0.08	-0.05	0.00
CWII-8	0.00	0.00	0.00	0.00	-0.02	0.00	-0.03	0.00	0.00	0.00	0.00	-0.02	0.00	-0.02	-0.02	-0.04	0.00	-0.02	0.00
CWII-9	-0.28	-0.30	-0.32	-0.29	-0.34	-0.29	-0.02	-0.04	0.00	0.00	-0.31	-0.31	0.28	-0.25	-0.28	-0.28	-0.16	-0.04	0.00
NW-1	-0.80	-0.77	-1.36	-1.37	-1.40	-1.56	-1.80	-1.59	-1.18	-1.11	-1.30	-1.29	-1.18	-0.61	-0.68	-0.64	-0.93	-1.46	-1.66
NW-2	-0.89	-0.22	-1.48	-1.22	-1.55	-1.61	-1.84	-1.85	-1.27	-1.42	-1.32	-1.35	-1.27	-0.70	-0.69	-0.64	-1.03	-1.61	-1.60
NW-3	-0.82	-0.54	-1.39	-1.39	-1.44	-1.44	-1.58	-1.73	-1.07	-1.09	-1.14	-1.20	-1.13	-0.62	-0.62	-0.64	-0.93	-1.44	-1.68
NW-4	-0.74	-0.56	-1.25	-1.33	-1.25	-1.27	-1.40	-1.37	-0.95	-1.02	-1.05	-1.11	-1.04	-0.58	-0.57	-0.59	-0.83	-1.26	-1.46
NW-5	-0.74	-0.61	-0.95	-1.22	-1.01	-0.99	-1.10	-1.07	-0.80	-0.98	-0.82	-0.86	-0.82	-0.48	-0.47	-0.50	-0.66	-1.00	-1.07
NW-6	-0.82	-0.59	-1.04	-1.19	-1.08	-1.05	-1.19	-1.19	-0.85	-0.99	-0.85	-0.95	-0.88	-0.50	-0.50	-0.51	-0.58	-1.07	-1.16
Ext-1	0.00	-0.50	-0.98	-1.00	-0.05	-0.21	-0.06	-0.98	-0.04	-0.07	-0.34	-0.05	-0.02	-0.02	-0.03	-0.04	-0.58	-0.11	-0.62
Ext-2	-0.62	-0.42	-0.42	-0.98	-0.40	-0.66	-0.46	-0.95	-0.41	-0.57	-0.37	-0.39	0.37	-0.24	-0.22	-0.23	-0.68	-0.47	-0.79
Ext-3	-0.66	-0.49	-1.06	-0.98	-1.09	-1.09	-1.26	-0.77	-1.01	-1.72	-0.94	-0.97	0.76	-0.52	-0.53	-0.54	-0.67	-1.11	-0.54
Ext-4	-0.64	-0.59	-1.02	-0.96	-1.29	-0.53	-1.22	-1.20	-1.19	-1.28	-0.91	-0.93	0.89	-0.50	-0.55	-0.51	-0.28	-1.07	-0.32
Ext-5	-0.58	-0.44	-0.88	-1.02	-0.92	-0.88	-1.03	-0.98	-0.87	-0.92	-0.24	-0.80	-0.78	-0.44	-0.32	-0.45	-0.03	-0.71	-0.05
N-1	NA	NA	NA	-0.02	-0.04	-0.03	N/A	N/A	N/A	N/A	N/A	N/A	N/A	N/A	N/A	N/A	N/A	N/A	0.00
N-2	-0.06	-0.04	-0.03	-0.02	-0.04	-0.02	-0.09	-0.05	-0.02	0.00	0.00	-0.06	-0.02	-0.05	-0.04	-0.08	-0.04	-0.02	-0.02
N-3	-0.02	-0.03	-0.02	0.00	0.00	-0.02	-0.05	-0.03	0.00	0.00	0.00	-0.04	0.00	-0.02	-0.02	-0.04	-0.02	-0.02	0.00
N-4	-0.04	-0.02	0.00	0.00	0.00	0.00	0.00	-0.02	N/A	0.00	0.00	0.00	0.00	-0.02	-0.03	-0.04	-0.02	-0.01	0.00
N-5	-0.27	-0.03	0.00	0.00	-0.02	-0.02	-0.05	-0.03	0.00	-0.04	0.00	-0.03	0.00	-0.02	-0.03	-0.04	-0.04	-0.02	0.00
N-6	-0.02	-0.29	-0.31	-0.30	-0.33	-0.29	-0.03	0.00	N/A	-0.02	-0.31	-0.33	0.27	-0.26	-0.29	-0.28	-0.01	-0.02	0.02
BS-1	-1.42	-1.46	-2.86	-2.87	-2.98	-2.96	-3.31	-3.40	-1.96	-2.43	-2.35	-2.35	-2.06	-1.14	-2.27	-1.17	-1.85	-2.69	-3.18

Measured in inches of H2O

NA - Not Available

**Landfill Gas Control Well Vacuum Data**  
**East Northport Landfill, East Northport, New York**  
 for period of record between January, 2006 and September, 2019

Well	6/15	9/15	12/15	3/16	6/16	9/16	12/16	3/17	6/17	9/17	12/17	3/18	6/18	9/19	12/18	3/19	6/19	9/19	
CWI-4	-1.50	-2.00	-1.48	-1.54	-1.44	-1.22	-1.31	-1.46	-1.39	-1.21	-1.45	-1.58	-1.44	-1.38	0.00	0.00	-1.36	-1.25	
CWI-5	-1.55	-1.70	-1.98	-1.98	-1.53	-1.42	-1.66	-1.67	-1.63	-1.43	-1.64	-1.73	-1.54	-1.66	0.00	0.00	-1.60	-1.42	
CWI-6	-1.67	-1.50	NA	-1.91	-1.58	-1.48	-1.67	-1.76	-1.73	-1.38	-1.80	-2.03	-1.56	-1.72	0.00	0.00	-1.65	-1.39	
CWI-7	-1.78	-0.72	-0.43	-0.70	-1.42	-1.27	-1.41	-1.51	-1.76	-0.20	-1.72	-2.05	-1.51	-1.04	0.15	0.36	-1.11	-1.20	
CWII-1	-1.65	-1.08	-1.70	-1.68	-1.50	-1.11	-1.18	-1.62	-1.56	-1.19	-1.70	-1.89	-1.44	-1.52	0.00	0.00	-1.46	-1.15	
CWII-2	-1.50	-1.42	-1.39	-1.47	-1.09	-1.14	-1.32	-1.92	-1.39	-1.10	-1.40	-1.95	-1.39	-1.38	0.00	0.00	-1.11	-0.91	
CWII-3	-1.80	-1.47	-1.20	-1.62	-1.55	-1.22	-0.76	-1.65	-1.60	-1.11	-1.69	-1.91	-1.47	-1.50	0.00	0.00	-1.44	-1.09	
CWII-4	-1.55	-1.30	-1.64	-1.73	-1.46	-1.20	-1.31	-1.59	-1.50	-1.05	-1.57	-1.92	-1.32	-1.05	0.00	0.00	-1.48	-1.06	
CWII-5	-1.56	-1.29	-1.17	-1.79	-1.54	-1.37	-1.63	-1.68	-1.48	-1.24	-1.72	-1.95	-1.41	-1.63	0.00	0.00	-1.47	-0.89	
CWII-6	NA	-0.75	0.00	0.00	-0.41	-0.02	-0.04	0.02	-0.11	NA	NA	NA	NA	NA	NA	NA	NA	NA	-1.04
CWII-7	-0.04	-0.50	0.00	0.00	NA	-0.04	-0.01	0.01	-1.50	-0.36	-0.03	0.00	0.00	NA	NA	0.00	-1.48	NA	
CWII-8	0.00	-0.07	0.00	0.00	0.00	0.00	0.00	0.00	0.00	0.00	-0.01	0.00	0.00	-1.35	0.00	-0.02	0.00	-0.03	
CWII-9	-0.05	-0.44	0.00	0.00	-0.16	-0.05	-0.03	0.00	-0.06	-0.23	-0.02	-0.01	-1.50	0.00	0.00	-0.02	-0.18	-0.36	
NW-1	-1.44	-1.77	-1.74	-1.59	-1.33	-1.51	-1.68	-1.68	-1.48	-1.34	-1.60	-1.68	-1.47	-1.50	0.00	0.00	-1.59	-1.52	
NW-2	-1.69	-1.62	-1.71	-1.85	-1.53	-1.48	-1.41	-1.49	-1.66	-1.43	-1.75	-1.92	-1.72	-1.39	0.00	0.00	-1.69	-1.55	
NW-3	-1.47	-1.40	-1.43	-1.63	-1.35	-1.25	-1.35	-1.03	-1.43	-1.28	-1.45	-1.56	-1.40	-1.43	0.00	0.00	-1.43	-1.34	
NW-4	-1.27	-1.20	-1.33	-1.45	-1.27	-1.20	1.10	-1.15	-1.35	-1.14	-1.34	-1.49	-1.34	-1.86	0.00	0.00	-1.31	-1.22	
NW-5	-1.15	-1.00	-1.02	-1.10	-0.95	-1.11	-1.11	-1.20	-1.30	-0.87	-1.40	-1.20	-1.02	-1.00	0.00	0.00	-1.01	-0.95	
NW-6	-1.10	-1.10	-1.11	-1.18	-1.01	-1.10	-1.07	-1.10	-1.45	-0.90	-1.14	-1.17	-1.16	-1.07	0.00	0.00	-1.00	-0.99	
Ext-1	-0.94	-0.06	-0.32	-0.06	-0.06	-1.08	-1.13	-0.42	-1.38	NA	-1.10	-0.52	-0.23	-1.00	-0.02	0.00	-1.34	-0.06	
Ext-2	-1.07	-0.44	-0.41	-0.48	-0.42	-0.98	-0.92	-0.51	-1.29	NA	-1.17	-0.48	-0.37	-0.51	0.00	0.00	-1.47	-0.40	
Ext-3	-1.13	-1.10	-1.18	-1.22	-1.04	-0.87	-0.81	-1.01	-1.25	NA	-1.09	-0.85	-0.62	-0.88	0.00	0.00	-1.30	-1.00	
Ext-4	-1.08	-1.27	-1.87	-1.16	-1.01	-0.80	-0.90	-1.02	-1.31	-0.89	-1.21	-0.88	-0.56	-0.91	0.00	0.00	-1.10	-0.97	
Ext-5	-0.94	-0.92	-0.88	-0.96	-0.85	-0.91	-0.91	-0.88	-0.92	-0.72	-1.08	-0.90	-0.86	-0.06	0.00	0.00	-0.09	-0.80	
N-1	NA	-0.04	-0.07	-0.02	-0.05	-0.03	NA	NA	NA	NA	-0.05	NA	NA	0.00	0.00	0.00	NA	-1.02	
N-2	-0.02	-0.01	-0.05	-0.04	-0.04	-0.03	0.00	-0.04	0.00	0.00	-0.06	-0.04	-0.20	NA	0.00	-0.03	-1.42	-1.07	
N-3	0.00	0.00	-0.03	-0.03	-0.03	-0.03	NA	-0.02	0.00	0.00	-0.04	-0.03	-0.40	-0.02	0.00	-0.02	-1.23	-1.05	
N-4	0.00	0.00	0.00	-0.02	-0.02	-0.02	0.00	0.00	0.00	0.00	-0.03	-0.03	-0.30	-0.01	0.00	-0.02	-1.57	-0.99	
N-5	0.00	0.00	-0.03	-0.03	-0.03	-0.03	0.00	-0.02	0.00	0.00	-0.04	-0.02	-0.30	-0.09	0.00	0.00	-1.34	-1.01	
N-6	0.00	-0.41	0.00	0.00	-0.16	-0.07	0.00	0.00	-0.06	0.00	-0.02	0.00	0.00	-0.05	0.00	-0.03	-1.40	-0.98	
BS-1	-3.11	-3.05	-3.07	-3.20	-2.85	-2.61	-2.99	-3.02	-2.95	-2.64	-3.05	-2.15	-2.56	-1.31	0.00	0.00	-3.60	-3.52	

Measured in inches of H2O

NA - Not Available