

TOWN OF HUNTINGTON - EAST NORTHPORT LANDFILL  
99 TOWNLINE ROAD, EAST NORTHPORT, NEW YORK  
LANDFILL GAS MONITORING REPORT - SECOND QUARTER 2022

**LANDFILL GAS MONITORING REPORT  
SECOND QUARTER 2022  
FOR  
TOWN OF HUNTINGTON  
EAST NORTHPORT LANDFILL AT  
TOWNLINE ROAD, EAST NORTHPORT, NEW YORK**

*Prepared for:*

**TOWN OF HUNTINGTON  
DEPARTMENT OF ENVIRONMENTAL WASTE MANAGEMENT  
100 MAIN STREET  
HUNTINGTON, NEW YORK**

*Prepared by:*

**D&B ENGINEERS AND ARCHITECTS  
WOODBURY, NEW YORK**

**JUNE 2022**

**LANDFILL GAS MONITORING REPORT - SECOND QUARTER 2022  
TOWN OF HUNTINGTON  
EAST NORTHPORT LANDFILL**

**TABLE OF CONTENTS**

<u>Section</u>	<u>Title</u>	<u>Page</u>
<b>1.0</b>	<b>INTRODUCTION.....</b>	<b>1-1</b>
1.1	Project Objective.....	1-1
1.2	Site Description.....	1-1
1.3	Scope of Work .....	1-5
1.4	Equipment and Methodology.....	1-6
<b>2.0</b>	<b>PROJECT SUMMARY.....</b>	<b>2-1</b>
2.1	Overview of Results.....	2-1
	2.1.1 Landfill Gas Monitoring Wells.....	2-1
	2.1.2 Landfill Gas Control Wells.....	2-1
	2.1.3 Condensate Drains .....	2-2
2.2	Historical Methane Detections.....	2-2
<b>3.0</b>	<b>CONCLUSIONS AND RECOMMENDATIONS.....</b>	<b>3-1</b>
3.1	Conclusions.....	3-1
3.2	Recommendations.....	3-2

**List of Figures**

---

1-1	Site Location Map.....	1-2
1-2	Site Plan .....	1-4

**List of Appendices**

---

Table 1 – Results of Landfill Gas Monitoring Wells.....	A
Table 2 – Results of Landfill Gas Control Wells .....	B
Table 3 – Condensate Drain Evaluation .....	C
Table 4 – Historical Landfill Gas Control Well Methane Data .....	D
Table 5 – Historical Landfill Gas Control Well Vacuum Data .....	E

## **1.0 INTRODUCTION**

Presented herein are the results of the Second Quarter 2022 Landfill Gas (LFG) monitoring activities performed at the Town of Huntington (TOH) East Northport Landfill, as stipulated by the New York State Department of Environmental Conservation (NYSDEC). The work described in this report was completed in accordance with the provisions of the contractual agreement between the Town of Huntington (TOH) and D&B Engineers and Architects (D&B), dated June 2, 2021, for LFG Monitoring and Related Engineering Services as described in the TOH Request for Proposal (RFP) No. 2021-02-003 and Post Closure Operation & Maintenance (O&M) Plan for the East Northport Landfill, located at 99 Townline Road, East Northport, NY. The O&M work plan was developed by Cashin Associates, P.C. in November 1996, in conformance with the NYSDEC Record of Decision (ROD) mandated monitoring program.

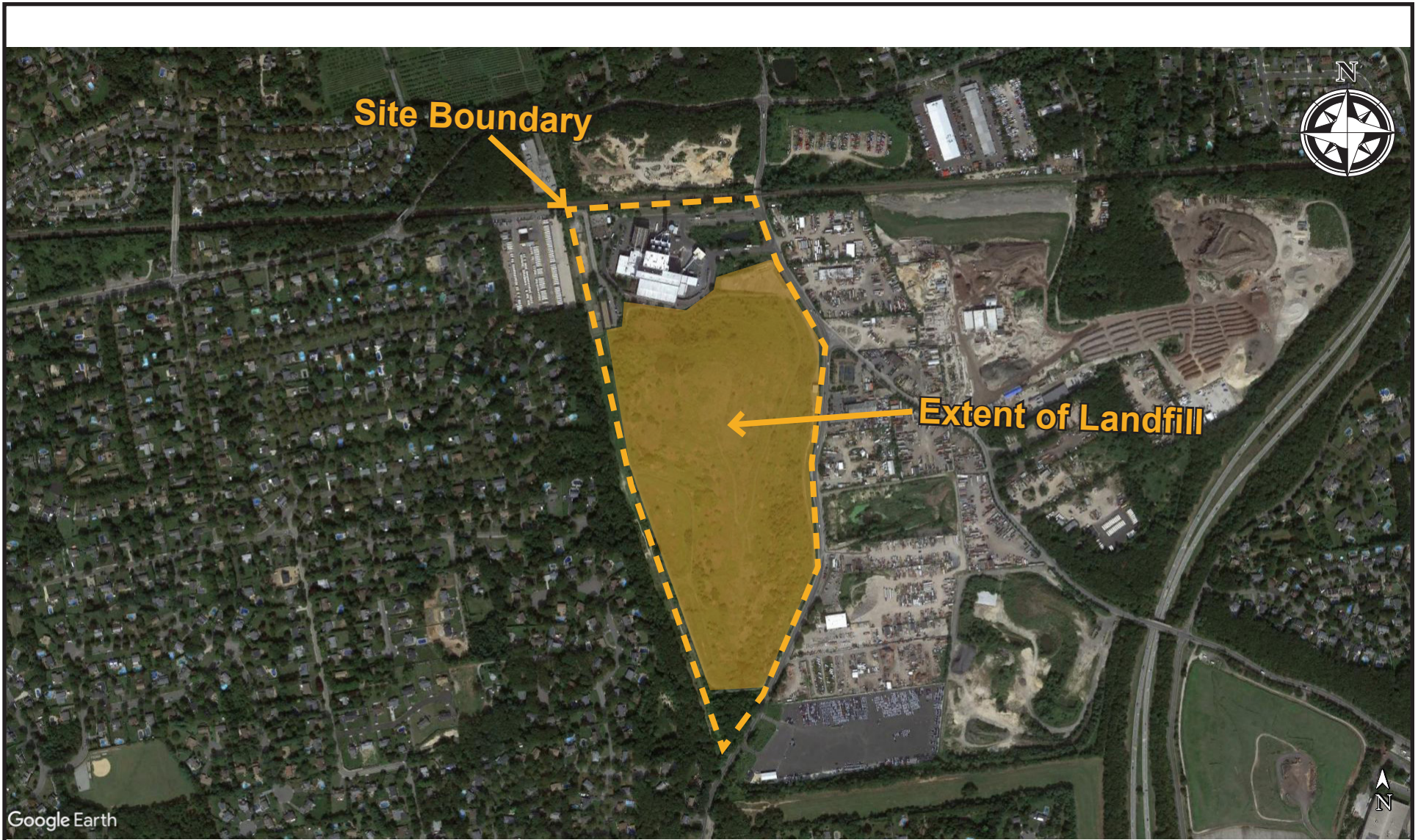
The TOH is required by the NYSDEC ROD (which was modified by the NYSDEC on August 13, 2014) to provide monitoring reports on LFG at the TOH Landfill located on Townline Road in East Northport, NY 11731. The modified ROD reduced the frequency of monitoring periods to quarterly, with the exception of the blower station sampling and analysis which remains an annual requirement.

### **1.1 Project Objective**

The objectives of the Quarterly Landfill Gas Monitoring Reports for the East Northport Landfill are to provide current methane gas production data, and to provide an assessment of the current condition and efficacy of the LFG migration control system installed at the site.

### **1.2 Site Description**

The Site is located at 99 Townline Road, East Northport, New York, 11731 within the Town of Huntington, New York. A Site Location Map is provided as **Figure 1-1**.



TOWN OF HUNTINGTON - EAST NORTHPORT LANDFILL  
99 TOWN LINE ROAD  
EAST NORTHPORT, NY 11731



**SITE LOCATION MAP**

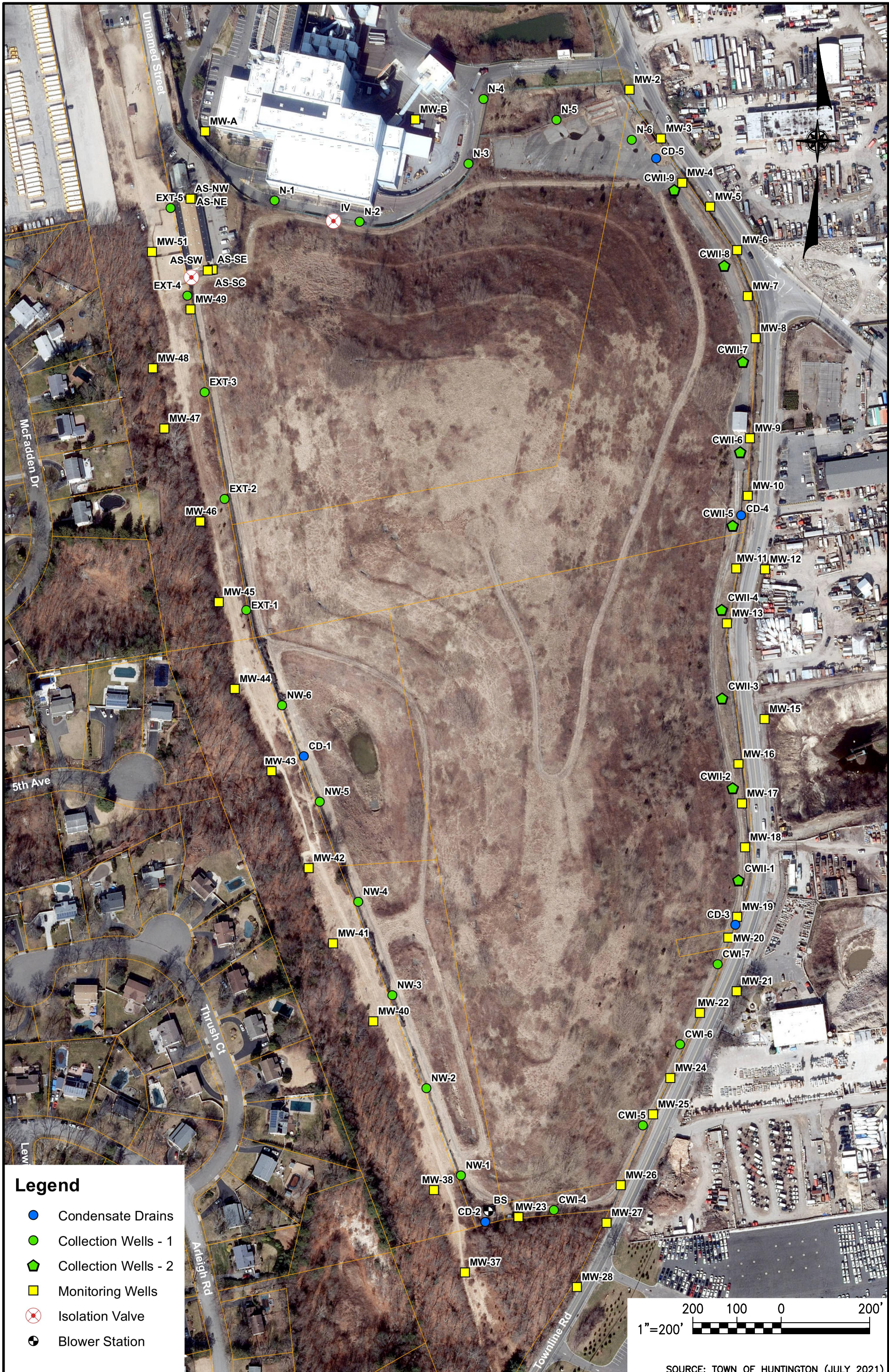
Figure 1-1

The TOH East Northport Landfill comprises forty-four (44) acres and is located on the west side of Townline Road, approximately ¼ mile south of Pulaski Road, in East Northport, New York. The site is bounded by Townline Road to the East and South which is followed by commercial or industrial use land. The Covanta of Huntington facility adjoins the site to the north followed by the Long Island Railroad which bounds the Site to the North and is followed by commercial use land. To the West, the Site is bounded by a utility right-of-way owned by PSEG of Long Island which is followed by predominately residential land.

The Landfill is a designated Class 4 Inactive Hazardous Waste Site by NYSDEC and has been capped since August 1996, at which time the LFG control and monitoring systems were upgraded and expanded.

A Site Plan including all monitoring wells, control wells, condensate drains, control system isolation valves, and blower station is provided as **Figure 1-2**. The primary landfill gas migration control system consists of thirty (30) active LFG control wells that are connected to one blower station through a single header pipe that forms a complete loop around the perimeter of the Landfill. Each individual control well is screened at a depth of approximately 30 feet below grade and is located in a pre-cast concrete vault with a manhole approximately at, or a few feet above grade. Each control well has a valve to regulate the draw from the well or isolate the well from the system, and a labcock to take vacuum or LFG readings. There are five (5) condensate drains located throughout the LFG collection system.

There are forty-one (41) monitoring well clusters around the perimeter of the landfill, both on and off site. The forty-one (41) well clusters each have between two (2) and four (4) probes screened at discrete depths between five (5) and seventy (70) feet below grade. Each probe is fitted with at least one labcock for monitoring purposes. The monitoring well clusters provide a means to confirm the LFG control system is effectively extracting the methane generated on-site and preventing any detectable levels of methane in soil vapor from migrating off-site.



**Legend**

- Condensate Drains
- Collection Wells - 1
- ◆ Collection Wells - 2
- Monitoring Wells
- ⊗ Isolation Valve
- ⊗ Blower Station

SOURCE: TOWN OF HUNTINGTON (JULY 2021)

TOWN OF HUNTINGTON - EAST NORTHPORT LANDFILL  
 99 TOWN LINE ROAD  
 EAST NORTHPORT, NY 11731  
**SITE PLAN**

**FIGURE 1-2**

F:\5629-2A\dwg\5629-2A-C-PL01.dwg, Layout1, 7/26/2021 9:24:58 AM, rferrell

The Town maintains an Animal Control Facility adjacent to the Landfill that contains a separate LFG control and monitoring system. This system consists of a sand layer beneath the concrete slab which the facility sits on that is connected by the ducts to wind driven exhaust fans on the roof. There are also five (5) probes in this sand layer that are connected to five monitoring labcocks located around the exterior of the building. Monitoring of these five (5) sampling locations is included in the modified ROD mandated monitoring program conducted at the same frequency as all other wells.

### **1.3 Scope of Work**

The scope-of-work includes the performance of the following on a quarterly basis:

- Monitor the forty-one (41) LFG monitoring well clusters installed around the perimeter of the landfill, both on-site and off-site for relative pressure and percent composition of methane, oxygen, and carbon dioxide.
- Monitor the thirty (30) active LFG control wells installed around the perimeter of the Landfill, as well as the landfill gas control system blower station to determine if the system is operating properly. Each LFG control well and the three (3) blower station monitoring points are monitored for temperature, flow rate, relative pressure, and percent composition of methane, oxygen, and carbon dioxide. The balance of the LFG control system will be checked and adjustments to the balance of the LFG control system will be made as necessary.
- Monitor the five (5) LFG monitoring probes installed around the exterior of the Town Animal Control Facility for relative pressure and percent composition of methane, oxygen, and carbon dioxide.
- Inspect the five (5) condensate drains installed at various locations throughout the LFG control system for proper operation and water accumulation.
- Identify any problems, damage, missing parts, etc. at each monitoring well cluster, LFG control well, LFG control system Blower Station, Town Animal Control Facility probes and condensate drains during each monitoring event. D&B will inspect well identifications during each monitoring phases and, if necessary, re-label each well accordingly.
- Collect one LFG grab sample for Method TO-15 on a yearly basis. The sample will be taken from the intake line of the blower station and collected with a 6-Liter Summa canister.

## 1.4 Equipment and Methodology

The following equipment and methodology were used to complete the LFG monitoring activities:

LFG was monitored for percent (%) composition of methane (CH<sub>4</sub>), oxygen (O<sub>2</sub>), and carbon dioxide (CO<sub>2</sub>), with the Landtec GEM 5000+ Gas Analyzer. Additionally, the GEM 5000+ was used to monitor relative pressure at each monitoring point which is recorded in inches of water. The gas analyzer was calibrated per the manufacturer's recommendations prior to monitoring. The LFG monitoring and control wells are monitored through a series of labcocks with ball valves which are screwed directly into each well, creating an air-tight seal. The GEM 5000+ is attached directly to the labcock with tubing and utilizes an air pump to draw air from the well and analyze the gas for percentage of methane, oxygen, and carbon dioxide.

The LFG control wells and blower station monitoring points were additionally monitored for air flow rate and temperature. The flow rate and temperature readings were taken with an Air Velocity Meter with telescopic probe. The readings were obtained by unscrewing the labcock monitoring point and inserting the probe tip into the pipe. The probe was inserted into approximately the center of the pipe which provides the most accurate measurements for air flow and temperature within the pipe.

## 2.0 PROJECT SUMMARY

This section of the report presents a summary of the monitoring results for the East Northport Landfill. The field activities were completed in accordance with the Town of Huntington RFP and the O&M Work Plan for the Site.

### 2.1 Overview of Results

The LFG monitoring was completed on May 17 and 18, 2022. The climatic conditions recorded during the monitoring event were approximately 60-77 °F, barometric pressure was measured between 29.60 and 29.85 (in. Hg), conditions were mostly fair and partly cloudy with 5-15 mph winds. Daily climatic conditions are additionally included in **Appendices A, B, and C**.

#### 2.1.1 Landfill Gas Monitoring Wells

A summary of the measured and recorded LFG monitoring well data is presented in **Table 1 (refer to Appendix A)**. As shown on **Table 1**, methane was not detected throughout the entire monitoring well network, including off-site wells.

#### 2.1.2 Landfill Gas Control Wells

**Table 2 (refer to Appendix B)** presents a summary of measured and recorded LFG control well data; including the system's blower station where three monitoring locations, labeled Blower Stations (BS) #1, #2, and #3 are located. As shown on **Table 2**, the relative pressure readings at the control well monitoring points are indicative of the efficacy of the LFG extraction system and measures the vacuum within the system. Relative pressure at the control wells ranged from -6.30 – 0.00 (in. H<sub>2</sub>O); the relative pressure reading at the active blower inlet was measured at -10.93 (in. H<sub>2</sub>O). Methane concentrations at the control wells ranged between 0.0% to a maximum of 1.9% by volume, which was measured at control well CWII-1.

### 2.1.3 Condensate Drains

**Table 3** (refer to **Appendix C**) presents the standing water measured within condensate drains CD-1 through CD-5. Standing water measured in these drains were recorded as follows: CD-1 (5.40'), CD-2 (0.10'), CD-3 (0.00'), CD-4 (8.30') and CD-5 (0.20'). Condensate drains with greater than one foot of standing water were drained of the accumulated water by TOH on May 17, 2022 during the on-site monitoring activities.

## 2.2 **Historical Methane Detections**

As reported in the East Northport Landfill First Quarter 2021 Monitoring Report, prepared by the prior consultants, methane has not been detected at any LFG monitoring wells since June 2002.

**Table 4** (refer to **Appendix D**) presents a summary of methane concentrations detected at LFG control wells from January 2006 through the previous quarterly monitoring event. As shown on **Table 4**, with the exception of a distinct decrease in reported concentrations from July through September 2013, methane concentrations are generally consistent. **Table 5** (refer to **Appendix E**) includes the historic control well vacuum data.

### 3.0 CONCLUSIONS AND RECOMMENDATIONS

The following section summarizes D&B's conclusions and recommendations based on the results of this quarterly landfill gas monitoring event as detailed previously in this report.

#### 3.1 Conclusions

Methane has not been detected at any wells within the LFG monitoring network since 2002, as previously mentioned in **Section 2.2**. The LFG control system has continued to produce sufficient vacuum around the perimeter of the waste mass to extract the relatively low levels of methane generated, and exhaust it through the Blower Station. The perimeter LFG monitoring wells confirm a measurable vacuum is extending to the perimeter of the Site. Methane concentrations throughout the control well system is minimal. The highest concentrations of methane were measured in control wells located on the southeastern portion of the landfill along the site boundary with Townline Road, with a maximum concentration of 1.9% by volume detected at CWII-1.

Vacuum pressure measured at control wells N-1 through N-6, and CWII-5 through CWII-9 were weaker than the vacuum pressure measured throughout the rest of the LFG control well system. The vacuum measured at N-1 through N-6, and CWII-5 through CWII-9 has been consistently weaker than the rest of the control wells since 2006. No methane has been detected at these control wells or within monitoring wells located in their vicinity. The weaker vacuum pressure and lower flow rates measured at these wells are presently not a concern, however it will continue to be evaluated.

Air flow readings were measured and recorded with an Air Velocity Meter in Cubic Feet per Minute (CFM). Measurable air flow and vacuum pressures confirm the presence of air flow within the control wells. Flow rates were confirmed at all control wells and blower station monitoring locations, with the exception of control well N-1. As described in more detail below, control well N-1 is damaged. The flow rate and vacuum within control well N-1 were both measured at or near zero.

## 3.2 Recommendations

Based on the results of the Second Quarter 2022 landfill gas monitoring event and evaluation of collected data, the following recommendations are presented below with regard to future operation and maintenance of the East Northport Landfill and ongoing landfill gas control system monitoring and evaluation:

- Continue quarterly LFG monitoring at the East Northport Landfill.
- Continue evaluation of the landfill gas control system and its effectiveness.
- Several LFG monitoring probes had broken labcock valves and should be replaced (refer to **Table 1** in **Appendix A**). Broken labcocks prevented recording accurate vacuum and gas composition measurements at the following monitoring well probes:
  - MW-19: Probes A, B, C, and D
  - MW-24: Probe B
  - MW-25: Probe A
  - MW-28: Probe C
  - MW-41: Probe C
- MW-13, Probe B: PVC riser piping is broken, approximately 45” below the top of the protective outer well casing. The PVC piping should be repaired and new labcock installed.
- MW-45, Probe B: PVC riser piping is broken, approximately 17” below the top of the protective outer well casing. The PVC piping should be repaired and new labcock installed.
- As noted in **Appendix B** on **Table 2**, control well N-1 which is located on the Covanta of Huntington property on the northern boundary of the site, needs repair. A section of the PVC piping which connects the well to the control valve is damaged and there is a notable gap in the connection between this piping and the control valve. The control well connection should be repaired, if feasible.
- Blower #1 was in operation at the time of D&B’s arrival on-site and there were no problems with the system. Blower #2 was designed to work as a backup, however it is no longer operational. D&B and TOH are currently evaluating the replacement of Blower #2.

- Except for control well valves EXT-1, EXT-2, EXT-4, and EXT-5, all control wells were set at or near the fully open position. Control valves EXT-1, EXT-2, EXT-4, and EXT-5 were seized and inoperable and therefore, the valve positions could not be determined. The positions of all the control valves will not be changed since the system is operating as intended. D&B will continue to evaluate and assess the position of the control valves in relation to the effectiveness of methane extraction throughout the landfill. Although the LFG control system is effective, the system may need to be re-balanced during future monitoring events to improve vacuum in areas if higher concentrations of methane are detected, or to adjust to any changes in the systems.

## **APPENDIX A**

### **TABLE 1 - RESULTS OF LANDFILL GAS MONITORING WELLS**

**TABLE 1  
LANDFILL GAS MONITORING RESULTS  
TOWN OF HUNTINGTON  
EAST NORTHPORT LANDFILL**

**Monitoring Wells**

Location ID	Probe	Condition	Date	CH <sub>4</sub>	CO <sub>2</sub>	O <sub>2</sub>	Relative Pressure	Comments
MW-2	A	OK	5/18/2022	0.0	0.2	20.7	-0.03	
	B	OK	5/18/2022	0.0	0.1	20.7	-0.09	
	C	OK	5/18/2022	0.0	0.1	20.8	-0.07	
	D	OK	5/18/2022	0.0	0.1	20.7	-0.07	
MW-3	A	OK	5/18/2022	0.0	0.1	20.7	-0.04	
	B	OK	5/18/2022	0.0	0.1	20.7	-0.17	
	C	OK	5/18/2022	0.0	0.1	20.7	-0.13	
	D	OK	5/18/2022	0.0	0.1	20.7	-0.08	
MW-4	A	OK	5/18/2022	0.0	0.1	20.7	-0.11	Replaced Labcock
	B	OK	5/18/2022	0.0	0.1	20.7	-0.16	Replaced Labcock
	C	Flooded	5/18/2022	-	-	-	-	Replaced Labcock - Sample probe was flooded with water, unable to take representative reading
	D	OK	5/18/2022	0.0	0.3	20.6	-0.02	Replaced Labcock
MW-5	A (7ft)	OK	5/18/2022	0.0	0.3	20.7	-0.04	
	B (15ft)	OK	5/18/2022	0.0	0.1	20.7	-0.08	
	C (30ft)	OK	5/18/2022	0.0	0.1	20.8	-0.10	
MW-6	A (7ft)	OK	5/18/2022	0.0	0.1	20.7	-0.06	
	B (15ft)	OK	5/18/2022	0.0	0.3	20.5	-0.10	
	C (30ft)	OK	5/18/2022	0.0	0.1	20.7	-0.02	
MW-7	A (7ft)	OK	5/18/2022	0.0	0.1	21.2	-0.03	
	B (15ft)	OK	5/18/2022	0.0	0.1	21.2	-0.03	
	C (30ft)	OK	5/18/2022	0.0	0.3	21.0	-0.01	
MW-8	A (7ft)	OK	5/18/2022	0.0	0.2	20.8	0.02	
	B (15ft)	OK	5/18/2022	0.0	0.1	21.1	0.00	
	C (30ft)	OK	5/18/2022	0.0	0.1	21.2	-0.40	
MW-9	A	OK	5/18/2022	0.0	0.6	20.6	-0.10	Probe not labeled
	B	OK	5/18/2022	0.0	0.1	21.2	0.00	Probe not labeled
	C	OK	5/18/2022	0.0	0.1	21.2	-0.10	Probe not labeled
MW-10	A	OK	5/18/2022	0.0	0.1	21.2	-0.25	
	B	OK	5/18/2022	0.0	0.1	21.2	-0.17	
	C	OK	5/18/2022	0.0	0.2	21.0	-0.22	
	D	OK	5/18/2022	0.0	0.1	21.1	-0.17	

**Notes:**

CH<sub>4</sub>, CO<sub>2</sub>, and O<sub>2</sub> are reported in percent gas.

Relative well head pressure is reported in inches of water.

Atmospheric pressure is reported in inches of mercury.

Weather -

5/18/2022: 60-70°F, Partly Cloudy, 5-10 mph winds, Barometric Pressure 29.85" Hg

**TABLE 1 (CONTINUED)**  
**LANDFILL GAS MONITORING RESULTS**  
**TOWN OF HUNTINGTON**  
**EAST NORTHPORT LANDFILL**

**Monitoring Wells**

Location ID	Probe	Condition	Date	CH <sub>4</sub>	CO <sub>2</sub>	O <sub>2</sub>	Relative Pressure	Comments
MW-11	A	OK	5/18/2022	0.0	0.1	21.2	-0.04	
	B	OK	5/18/2022	0.0	0.1	21.1	-0.02	
	C	OK	5/18/2022	0.0	0.1	21.1	0.00	
	D	OK	5/18/2022	0.0	0.1	21.2	-0.04	
MW-12	A	OK	5/18/2022	0.0	0.1	19.9	-0.10	
	B	OK	5/18/2022	0.0	0.1	20.0	-0.13	
	C	OK	5/18/2022	0.0	0.1	20.1	-0.17	
MW-13	A	OK	5/18/2022	0.0	0.4	20.8	-0.05	
	B	Broken	5/18/2022	-	-	-	-	Disconnected about 45" below the top of casing
	C	OK	5/18/2022	0.0	0.1	21.2	-0.22	
MW-15	A	OK	5/18/2022	0.0	0.1	20.2	-0.17	
	B	OK	5/18/2022	0.0	0.1	20.2	-0.20	
	C	OK	5/18/2022	0.0	0.1	20.3	-0.21	
MW-16	A	OK	5/18/2022	0.0	0.1	21.1	-0.36	
	B	OK	5/18/2022	0.0	0.1	21.1	-0.35	
	C	OK	5/18/2022	0.0	0.1	21.1	-0.32	
MW-17	A (7ft)	OK	5/18/2022	0.0	0.1	21.0	-0.27	
	B (15ft)	OK	5/18/2022	0.0	0.1	21.0	-0.28	
	C (30ft)	OK	5/18/2022	0.0	0.1	21.0	0.02	
MW-18	A (7ft)	OK	5/18/2022	0.0	0.1	20.7	0.05	
	B (15ft)	OK	5/18/2022	0.0	0.1	20.7	-0.06	
	C (30ft)	OK	5/18/2022	0.0	0.1	20.7	-0.13	
MW-19	A	Broken	5/18/2022	-	-	-	-	Labcock monitoring point broken
	B	Broken	5/18/2022	-	-	-	-	Labcock monitoring point broken
	C	Broken	5/18/2022	-	-	-	-	Labcock monitoring point broken
	D	Broken	5/18/2022	-	-	-	-	Labcock monitoring point broken
MW-20	A (7ft)	OK	5/18/2022	0.0	0.1	20.6	-0.63	
	B (15ft)	OK	5/18/2022	0.0	0.1	20.6	-0.61	
	C (30ft)	OK	5/18/2022	0.0	0.1	20.6	-0.65	
MW-21	A	OK	5/18/2022	0.0	0.1	20.5	-0.38	
	B	OK	5/18/2022	0.0	0.1	20.6	-0.57	
	C	OK	5/18/2022	0.0	0.1	20.7	-0.33	
	D	OK	5/18/2022	0.0	0.1	20.7	-0.41	

**Notes:**

CH<sub>4</sub>, CO<sub>2</sub>, and O<sub>2</sub> are reported in percent gas.

Relative well head pressure is reported in inches of water.

Atmospheric pressure is reported in inches of mercury.

Weather - 5/18/2022: 60-70°F, Partly Cloudy, 5-10 mph winds, Barometric Pressure 29.85" Hg

**TABLE 1 (CONTINUED)**  
**LANDFILL GAS MONITORING RESULTS**  
**TOWN OF HUNTINGTON**  
**EAST NORTHPORT LANDFILL**

**Monitoring Wells**

Location ID	Probe	Condition	Date	CH <sub>4</sub>	CO <sub>2</sub>	O <sub>2</sub>	Relative Pressure	Comments
MW-22	A (7ft)	OK	5/18/2022	0.0	0.1	20.5	-0.45	
	B (15ft)	OK	5/18/2022	0.0	0.1	20.5	-0.40	
	C (30ft)	OK	5/18/2022	0.0	0.1	20.9	-0.53	
MW-23	A	OK	5/18/2022	0.0	0.0	20.7	-0.11	
	B	OK	5/18/2022	0.0	0.0	20.7	-0.34	
	C	OK	5/18/2022	0.0	0.0	20.8	-0.16	
	D	OK	5/18/2022	0.0	0.0	20.8	-0.29	
MW-24	A (7ft)	Broken	5/18/2022	0.0	0.1	20.4	0.00	Replaced Labcock
	B (15ft)	Broken	5/18/2022	-	-	-	-	Labcock monitoring point broken
	C (30ft)	Flooded	5/18/2022	-	-	-	-	Replaced Labcock - Sample probe was flooded with water, unable to take representative reading
MW-25	A (7ft)	Broken	5/18/2022	-	-	-	-	Labcock monitoring point broken
	B (15ft)	OK	5/18/2022	0.0	0.1	20.5	-0.58	
	C (30ft)	OK	5/18/2022	0.0	0.1	20.6	-0.80	
MW-26	A (7ft)	OK	5/18/2022	0.0	0.0	20.5	-0.38	Probe not labeled
	B (15ft)	OK	5/18/2022	0.0	0.1	20.5	-0.26	Probe not labeled
	C (30ft)	OK	5/18/2022	0.0	0.1	20.5	-0.29	Probe not labeled
	D (55ft)	OK	5/18/2022	0.0	0.1	20.5	-0.23	Probe not labeled
MW-27	A (7ft)	OK	5/18/2022	0.0	0.1	20.8	-0.12	
	B (15ft)	OK	5/18/2022	0.0	0.1	20.8	-0.22	
	C (30ft)	OK	5/18/2022	0.0	0.1	20.9	-0.23	
MW-28	A	OK	5/18/2022	0.0	0.1	20.7	-0.01	
	B	OK	5/18/2022	0.0	0.4	20.5	0.00	
	C	Broken	5/18/2022	-	-	-	-	Labcock monitoring point broken
MW-37	A	OK	5/18/2022	0.0	0.2	20.6	-0.03	
	B	OK	5/18/2022	0.0	0.2	20.7	-0.01	
	C	OK	5/18/2022	0.0	0.1	20.6	-0.02	
MW-38	A (7ft)	OK	5/18/2022	0.0	0.0	20.5	-0.09	
	B (15ft)	OK	5/18/2022	0.0	0.0	20.5	-0.12	
	C (30ft)	OK	5/18/2022	0.0	0.1	20.6	-0.24	
MW-40	A	OK	5/18/2022	0.0	0.1	20.9	-0.10	
	B	OK	5/18/2022	0.0	0.0	20.5	-0.16	
	C	OK	5/18/2022	0.0	0.1	20.4	-0.16	
	D	OK	5/18/2022	0.0	0.1	20.4	-0.07	

**Notes:**

CH<sub>4</sub>, CO<sub>2</sub>, and O<sub>2</sub> are reported in percent gas.

Relative well head pressure is reported in inches of water.

Atmospheric pressure is reported in inches of mercury.

Weather - 5/18/2022: 60-70°F, Partly Cloudy, 5-10 mph winds, Barometric Pressure 29.85" Hg

**TABLE 1 (CONTINUED)**  
**LANDFILL GAS MONITORING RESULTS**  
**TOWN OF HUNTINGTON**  
**EAST NORTHPORT LANDFILL**

**Monitoring Wells**

Location ID	Probe	Condition	Date	CH <sub>4</sub>	CO <sub>2</sub>	O <sub>2</sub>	Relative Pressure	Comments
MW-41	A	OK	5/18/2022	0.0	0.3	20.2	-0.07	
	B	OK	5/18/2022	0.0	0.2	20.4	-0.09	
	C	Broken	5/18/2022	-	-	-	-	Labcock broken, needs bushing
MW-42	A	OK	5/18/2022	0.0	0.1	20.5	-0.34	
	B	OK	5/18/2022	0.0	0.1	20.6	-0.09	
	C	OK	5/18/2022	0.0	0.0	20.6	-0.07	
MW-43	A	OK	5/18/2022	0.0	0.1	20.7	-0.13	
	B	OK	5/18/2022	0.0	0.0	20.8	-0.01	
	C	OK	5/18/2022	0.0	0.7	20.1	-0.03	
MW-44	A	OK	5/18/2022	0.0	0.1	20.5	-0.05	
	B	OK	5/18/2022	0.0	0.0	20.5	-0.10	
	C	OK	5/18/2022	0.0	0.0	20.6	-0.05	
MW-45	A	OK	5/18/2022	0.0	0.1	20.7	-0.01	
	B	Broken	5/18/2022	-	-	-	-	Disconnected about 17" below the top of casing
	C	OK	5/18/2022	0.0	0.1	20.8	-0.01	
MW-46	A	OK	5/18/2022	0.0	0.0	20.8	-0.01	
	B	OK	5/18/2022	0.0	0.0	20.8	-0.11	
	C	OK	5/18/2022	0.0	0.0	20.9	-0.06	
	D	OK	5/18/2022	0.0	0.0	20.9	-0.04	
MW-47	A	OK	5/18/2022	0.0	0.2	20.5	-0.06	
	B	OK	5/18/2022	0.0	0.2	20.4	-0.08	
	C	OK	5/18/2022	0.0	0.2	20.4	-0.13	
MW-48	A	OK	5/18/2022	0.0	0.2	20.3	-0.06	
	B	OK	5/18/2022	0.0	0.1	20.5	-0.05	
	C	OK	5/18/2022	0.0	0.0	20.5	-0.08	
MW-49	A	OK	5/18/2022	0.0	0.0	20.9	-0.04	
	B	OK	5/18/2022	0.0	0.0	20.9	-0.03	
	C	OK	5/18/2022	0.0	0.0	20.9	-0.05	
MW-51	A	OK	5/18/2022	0.0	0.0	20.8	-0.11	
	B	OK	5/18/2022	0.0	0.0	20.8	-0.15	
	C	OK	5/18/2022	0.0	0.0	20.8	0.00	

**Notes:**

CH<sub>4</sub>, CO<sub>2</sub>, and O<sub>2</sub> are reported in percent gas.

Relative well head pressure is reported in inches of water.

Atmospheric pressure is reported in inches of mercury.

Weather - 5/18/2022: 60-70°F, Partly Cloudy, 5-10 mph winds, Barometric Pressure 29.85" Hg

**TABLE 1 (CONTINUED)**  
**LANDFILL GAS MONITORING RESULTS**  
**TOWN OF HUNTINGTON**  
**EAST NORTHPORT LANDFILL**

**Monitoring Wells**

Location ID	Probe	Condition	Date	CH <sub>4</sub>	CO <sub>2</sub>	O <sub>2</sub>	Relative Pressure	Comments
MW-A	A	OK	5/17/2022	0.0	0.0	21.0	-0.32	
	B	OK	5/17/2022	0.0	0.0	21.0	-0.30	
MW-B	A	OK	5/17/2022	0.0	0.0	21.4	-0.30	
	B	OK	5/17/2022	0.0	0.0	21.6	-0.19	

**Notes:**

CH<sub>4</sub>, CO<sub>2</sub>, and O<sub>2</sub> are reported in percent gas.

Relative well head pressure is reported in inches of water.

Atmospheric pressure is reported in inches of mercury.

Weather - 5/17/2022: 65-77°F, Mostly Clear, 10-15 mph winds, Barometric Pressure 29.60" Hg

**TABLE 1 (CONTINUED)**  
**LANDFILL GAS MONITORING RESULTS**  
**EAST NORTHPORT LANDFILL**  
**EAST NORTHPORT, NEW YORK**

**Monitoring Wells**  
**Animal Control Facility**

Location ID	Well Condition	Date	CH <sub>4</sub>	CO <sub>2</sub>	O <sub>2</sub>	Relative Pressure	Comments
AS-NW	OK	5/18/2022	0.0	0.0	20.8	0.02	Connection threads stripped, needs new labcock
AS-NE	OK	5/18/2022	0.0	0.0	20.8	0.00	
AS-SE	OK	5/18/2022	0.0	0.0	20.9	0.00	
AS-SC	OK	5/18/2022	0.0	0.0	20.9	-0.01	Connection threads stripped, needs new labcock
AS-SW	OK	5/18/2022	0.0	0.0	20.8	0.00	Connection threads stripped, needs new labcock

**Notes:**

CH<sub>4</sub>, CO<sub>2</sub>, and O<sub>2</sub> are reported in percent gas.

Relative well head pressure is reported in inches of water.

Atmospheric pressure is reported in inches of mercury.

Weather - 5/18/2022: 60-70°F, Partly Cloudy, 5-10 mph winds, Barometric Pressure 29.85" Hg

## **APPENDIX B**

### **TABLE 2 – RESULTS OF LANDFILL GAS CONTROL WELLS**

**TABLE 2  
LANDFILL GAS MONITORING RESULTS  
TOWN OF HUNTINGTON  
EAST NORTHPORT LANDFILL**

**LFG Control Wells**

Location ID	Date	CH <sub>4</sub>	CO <sub>2</sub>	O <sub>2</sub>	Temp.	Relative Pressure	Flow Rate (CFM)	Comments
CWI-4	5/17/2022	0.1	0.7	19.2	84.2	-5.22	395	
CWI-5	5/17/2022	0.2	1.3	18.5	83.6	-5.77	436	
CWI-6	5/17/2022	0.3	1.7	18.0	84.4	-5.83	164	
CWI-7	5/17/2022	0.4	2.1	17.3	85.8	-5.41	247	
CWII-1	5/17/2022	1.9	3.4	15.5	87.0	-5.19	190	
CWII-2	5/17/2022	0.0	0.5	19.1	77.6	-4.88	142	
CWII-3	5/17/2022	1.0	3.7	14.6	77.4	-5.90	115	
CWII-4	5/17/2022	0.7	3.3	15.4	79.4	-5.80	217	
CWII-5	5/17/2022	0.0	2.4	17.2	74.9	0.00	65	
CWII-6	5/17/2022	0.0	1.8	17.7	78.7	-0.18	52	Vault was flooded and pumped out on 5/17/2022.
CWII-7	5/17/2022	0.0	1.7	17.8	73.2	0.00	19	
CWII-8	5/17/2022	0.0	0.5	19.0	74.2	0.00	3	
CWII-9	5/17/2022	0.0	0.1	20.4	73.4	0.00	26	
N1	5/17/2022	0.0	0.1	21.2	81.8	0.00	15	
N2	5/17/2022	0.0	0.1	21.4	79.1	-0.35	7	
N3	5/17/2022	0.0	0.4	20.8	82.2	-0.15	5	Missing a labcock
N4	5/17/2022	0.0	0.1	21.4	79.0	-0.10	2	
N5	5/17/2022	0.0	0.2	20.2	64.2	0.00	10	
N6	5/17/2022	0.0	0.2	20.2	65.8	0.00	32	
NW1	5/17/2022	0.0	0.2	20.5	84.7	-5.57	198	
NW2	5/17/2022	0.0	0.3	20.4	82.1	-6.30	133	
NW3	5/17/2022	0.0	0.3	20.2	83.4	-5.51	183	
NW4	5/17/2022	0.0	0.4	20.0	86.5	-5.02	127	
NW5	5/17/2022	0.0	0.2	20.3	89.2	-3.84	166	
NW6	5/17/2022	0.0	0.3	20.4	88.7	-4.05	201	
EXT-1	5/17/2022	0.0	0.5	20.4	90.0	-0.14	13	Valve is seized/inoperable
EXT-2	5/17/2022	0.0	1.2	19.4	87.0	-1.85	67	Valve is seized/inoperable
EXT-3	5/17/2022	0.0	1.5	19.0	83.6	-4.16	125	
EXT-4	5/17/2022	0.0	2.8	17.3	85.0	-3.95	46	Valve is seized/inoperable
EXT-5	5/17/2022	0.0	0.9	20.1	81.3	-3.20	105	Valve is seized/inoperable
BS-1	5/17/2022	0.2	0.7	19.7	73.3	-10.93	4021	measured on intake side of blower
BS-2	5/17/2022	0.1	0.0	20.6	79.0	-2.74	11	Blower #2 is not running, valve leading to it is closed
BS-3	5/17/2022	0.3	1.0	19.4	78.3	3.91	4456	Measured on exhaust side of blower

**Notes:**

CH<sub>4</sub>, CO<sub>2</sub>, and O<sub>2</sub> are reported in percent gas. Temperature is in degrees Fahrenheit

Relative well head pressure is reported in inches of water.

BS - Blower Station

CFM - Cubic Feet per Minute

Weather - 5/17/2022: 65-77°F, Mostly Clear, 10-15 mph winds, Barometric Pressure 29.60" Hg

## **APPENDIX C**

### **TABLE 3 – CONDENSATE DRAIN EVALUATION**

**TABLE 3  
LANDFILL MONITORING RESULTS  
TOWN OF HUNTINGTON  
EAST NORTHPORT LANDFILL**

**Condensate Drain Evaluation**

Location ID	Date	Working Properly (Y/N)	Water Accumulation (in feet)
CD-1	5/17/2022	Y	5.40
CD-2	5/17/2022	Y	0.10
CD-3	5/17/2022	Y	0.00
CD-4	5/17/2022	Y	8.30
CD-5	5/17/2022	Y	0.20

**Notes:**

Fluid level measured with Water Level Meter

CD - Condensate Drain

Weather - 5/17/2022: 65-77°F, Mostly Clear, 10-15 mph winds, Barometric Pressure 29.60" Hg

**APPENDIX D**

**TABLE 4 – HISTORICAL LANDFILL GAS CONTROL WELL METHANE  
DATA**

**Table 4**  
**Historical Landfill Gas Control Well Methane Data**  
**Town of Huntington East Northport Landfill, East Northport, New York**  
*for period of record between January, 2006 to Present*

Well	1/06	2/06	3/06	4/06	5/06	6/06	7/06	8/06	9/06	10/06	11/06	12/06	1/07	2/07	3/07	4/07
CWI-4	0.0	0.3	0.4	0.2	0.1	0.3	0.1	0.0	0.0	0.2	0.1	0.1	0.1	0.1	0.0	0.1
CWI-5	0.0	1.8	2.0	1.5	0.8	1.5	0.2	0.0	0.0	1.0	0.8	0.7	0.7	2.1	0.0	0.7
CWI-6	0.1	0.3	0.1	0.4	1.0	0.9	0.2	0.0	0.0	0.0	1.0	0.6	0.6	0.0	0.0	0.8
CWI-7	0.2	5.0	6.0	5.0	0.1	0.7	0.6	0.0	0.0	0.2	2.2	1.5	1.1	NA	0.1	2.0
CWII-1	0.4	5.0	6.0	2.7	1.6	2.4	2.6	7.0	0.0	0.3	4.0	4.0	3.8	5.0	5.0	3.8
CWII-2	0.2	4.5	4.2	3.4	2.7	1.9	1.0	2.2	0.0	3.0	1.6	1.6	1.6	1.2	1.7	1.7
CWII-3	0.2	2.3	2.1	0.9	1.8	1.5	1.5	1.7	0.0	0.2	0.0	0.7	1.1	1.1	1.3	NA
CWII-4	0.2	4.0	3.8	1.0	4.0	1.3	0.8	4.7	0.0	0.3	5.0	2.8	2.8	1.7	3.6	2.7
CWII-5	0.0	1.0	4.2	0.5	0.7	0.6	0.4	1.5	0.0	0.0	0.8	0.4	0.6	0.8	0.2	0.4
CWII-6	0.2	3.5	0.7	0.8	2.0	0.6	1.1	0.5	0.0	0.1	0.9	1.4	1.7	1.7	0.3	1.2
CWII-7	0.0	0.1	3.4	0.0	0.0	0.0	0.0	0.2	0.0	0.0	0.1	0.0	0.0	0.0	0.0	0.0
CWII-8	0.0	0.0	0.0	0.0	0.0	0.0	0.2	0.0	0.0	0.0	0.0	0.0	0.0	0.0	0.0	0.0
CWII-9	0.0	1.1	0.0	0.7	0.6	0.2	0.5	0.4	0.0	0.0	0.4	0.4	0.7	0.6	0.4	0.3
NW-1	0.0	0.0	1.0	0.8	0.0	0.0	0.0	0.0	0.0	0.0	0.0	0.0	0.0	0.0	0.0	0.0
NW-2	0.0	0.0	0.0	0.0	0.0	0.0	0.0	0.0	0.0	0.0	0.0	0.0	0.0	0.0	0.0	0.0
NW-3	0.0	0.0	0.0	0.0	0.0	0.0	0.0	0.0	0.0	0.0	0.0	0.0	0.0	0.0	0.0	0.0
NW-4	0.0	0.0	0.0	0.0	0.0	0.0	0.0	0.0	0.0	0.0	0.0	0.0	0.0	0.0	0.0	0.0
NW-5	0.0	0.0	0.0	0.0	0.0	0.0	0.0	0.0	0.0	0.0	0.0	0.0	0.0	0.0	0.0	0.0
NW-6	0.0	0.0	0.0	0.0	0.0	0.0	0.0	2.0	0.0	0.0	0.0	0.0	0.0	0.0	0.0	0.0
Ext-1	0.0	0.0	0.0	0.0	0.0	0.1	0.0	0.0	0.0	0.0	0.0	0.0	0.0	0.0	0.0	0.0
Ext-2	0.0	0.0	0.0	0.0	0.0	0.1	0.1	0.2	0.0	0.0	0.0	0.0	0.0	0.0	0.0	0.0
Ext-3	0.2	0.0	0.0	0.0	0.2	0.0	0.8	0.2	0.0	3.0	1.2	0.3	1.3	0.2	0.0	0.1
Ext-4	0.2	0.0	0.0	0.0	0.4	0.2	0.4	0.1	0.0	2.0	0.4	0.2	1.0	0.1	0.0	0.1
Ext-5	0.0	0.0	0.0	0.0	0.0	0.0	0.0	0.0	0.0	0.0	0.0	0.0	0.0	0.0	0.0	0.0
N-1	0.0	0.0	0.0	0.0	0.0	0.0	0.0	0.1	0.0	0.0	0.0	0.0	0.0	0.0	0.0	0.0
N-2	2.6	1.3	0.6	11.0	NA	0.0	4.8	0.0	0.8	4.4	3.0	0.5	0.2	0.0	3.1	4.0
N-3	0.0	0.0	0.0	0.0	0.0	0.0	0.0	0.0	0.0	0.0	0.0	0.0	0.0	0.0	0.0	0.0
N-4	0.0	0.0	0.0	0.0	0.0	0.0	0.0	0.0	0.0	0.0	0.0	0.0	0.0	0.0	0.0	0.0
N-5	0.0	0.0	0.0	0.2	0.0	0.0	0.0	0.0	0.0	0.0	0.0	0.0	0.0	0.0	0.0	0.0
N-6	NA	0.0	0.0	0.1	NA	0.7	0.1	0.1	0.0	0.0	NA	NA	NA	NA	NA	0.0
BS-1	0.1	0.0	0.6	0.9	0.7	0.4	0.4	0.0	0.1	0.9	0.7	0.5	0.5	0.6	0.1	0.5

NA - Not Available

Measured in % Volume

*Note: Data reported prior to June 2021 was done by prior consultant*

**Table 4 (continued)**  
**Historical Landfill Gas Control Well Methane Data**  
**Town of Huntington East Northport Landfill, East Northport, New York**  
*for period of record between January, 2006 to Present*

Well	5/07	6/07	7/07	8/07	9/07	10/07	11/07	12/07	1/08	2/08	3/08	4/08	5/08	6/08	7/08	8/08
CWI-4	0.2	0.2	0.2	0.1	0.1	0.0	0.0	0.0	0.0	0.1	0.1	0.1	0.0	0.1	0.1	0.1
CWI-5	0.8	0.9	0.8	0.7	0.8	0.8	0.0	0.7	0.5	0.5	2.5	0.4	0.2	0.3	0.4	0.0
CWI-6	0.7	1.1	1.3	0.8	1.0	0.8	0.1	0.5	0.6	0.9	0.5	0.4	0.3	0.5	0.7	0.3
CWI-7	2.3	2.4	2.3	2.0	3.0	2.6	0.2	2.0	2.2	2.1	1.3	1.1	0.9	1.2	1.3	0.5
CWII-1	4.6	9.0	8.0	5.0	5.0	1.3	5.0	7.0	7.0	10.0	4.0	3.3	2.2	3.8	3.8	1.0
CWII-2	1.9	2.3	2.0	1.5	1.8	6.0	1.4	1.0	1.1	1.2	0.7	0.9	0.6	0.7	0.9	2.5
CWII-3	NA	3.8	2.7	4.0	3.5	1.8	2.8	0.3	1.5	2.2	1.4	1.0	0.5	1.0	1.4	0.7
CWII-4	2.6	3.5	3.3	3.1	3.5	2.6	3.5	2.5	2.1	2.7	2.0	1.5	1.1	1.5	1.5	1.0
CWII-5	0.9	1.7	1.3	1.7	1.8	0.9	1.0	0.2	0.3	0.4	2.5	0.3	0.3	0.5	0.8	1.2
CWII-6	1.7	2.5	2.0	2.0	2.9	1.7	2.1	0.3	1.0	0.7	0.7	0.7	0.6	0.8	0.0	0.5
CWII-7	0.0	0.0	0.0	0.0	0.0	0.0	0.0	0.0	0.0	0.0	0.0	0.0	0.0	0.0	0.0	1.1
CWII-8	0.0	0.0	0.0	0.0	0.0	0.0	0.0	0.0	0.0	0.0	0.0	0.0	0.0	0.0	0.0	0.0
CWII-9	0.5	0.5	0.5	0.4	0.6	0.4	0.5	0.3	4.5	0.2	0.2	0.2	0.2	0.2	0.1	0.3
NW-1	0.0	0.0	0.0	0.0	0.0	0.0	0.0	0.0	0.0	0.0	0.0	0.0	0.0	0.0	0.1	0.0
NW-2	0.0	0.0	0.0	0.0	0.0	0.0	0.0	0.0	0.0	0.0	0.0	0.0	0.0	0.0	0.0	0.0
NW-3	0.0	9.0	0.0	0.0	0.0	0.0	0.0	0.0	0.0	0.0	0.0	0.0	0.0	0.0	0.0	0.0
NW-4	0.0	0.0	0.0	0.0	0.0	0.0	0.0	0.0	0.0	0.0	0.0	0.0	0.0	0.0	0.0	0.0
NW-5	0.0	0.0	0.0	0.0	0.0	0.0	0.0	0.0	0.0	0.0	0.0	0.0	0.0	0.0	0.0	0.0
NW-6	0.0	0.0	0.0	0.0	0.0	0.0	0.0	0.0	0.0	0.0	0.0	0.0	0.0	0.0	0.0	0.0
Ext-1	0.0	0.1	0.0	0.0	0.0	0.0	0.0	0.0	0.0	0.0	0.0	0.0	0.0	0.0	0.0	0.0
Ext-2	0.1	0.1	0.0	0.0	0.0	0.0	0.0	0.0	0.0	0.0	0.0	0.0	0.0	0.0	0.0	0.0
Ext-3	0.0	0.0	0.0	0.0	0.0	0.0	0.3	0.0	1.5	1.5	0.2	0.0	0.0	0.0	0.0	0.0
Ext-4	0.3	0.0	0.1	0.0	0.0	0.0	0.0	0.0	0.0	0.0	0.1	0.0	0.0	0.0	0.0	0.0
Ext-5	0.0	0.0	0.0	0.0	0.0	0.0	0.0	0.0	0.0	0.0	0.0	0.0	0.0	0.0	0.0	0.0
N-1	0.0	0.0	0.0	0.0	0.0	0.0	0.0	0.0	0.0	0.0	0.0	0.0	0.0	0.0	0.0	0.0
N-2	2.8	3.4	3.3	3.0	3.4	4.7	0.3	3.5	2.0	NA	1.5	2.8	2.2	2.4	2.3	2.2
N-3	0.0	0.0	0.0	0.0	0.0	0.0	0.0	0.0	0.0	0.0	0.0	0.0	0.0	0.0	0.0	0.0
N-4	0.0	0.0	0.0	0.0	0.0	0.0	0.0	0.0	0.0	0.0	0.0	0.0	0.0	0.0	0.0	0.0
N-5	0.0	0.0	0.0	0.0	0.0	0.0	0.0	2.0	0.0	0.0	0.0	0.0	0.0	0.0	0.0	0.0
N-6	0.0	0.0	0.0	0.0	0.0	2.0	NA	NA	NA	NA	NA	NA	NA	NA	NA	NA
BS-1	0.5	0.7	0.4	0.7	0.7	0.6	0.0	0.5	0.4	0.5	0.3	0.3	0.2	0.3	0.3	0.3

NA - Not Available

Measured in % Volume

*Note: Data reported prior to June 2021 was done by prior consultant*

**Table 4 (continued)**  
**Historical Landfill Gas Control Well Methane Data**  
**Town of Huntington East Northport Landfill, East Northport, New York**  
*for period of record between January, 2006 to Present*

Well	9/08	10/08	11/08	12/08	1/09	2/09	3/09	4/09	5/09	6/09	7/09	8/09	9/09	10/09	11/09	12/09
CWI-4	0.0	0.0	0.0	0.0	0.0	0.0	0.0	0.1	0.2	0.0	0.0	0.0	0.0	0.1	0.2	0.3
CWI-5	0.2	1.5	0.3	0.0	0.3	0.0	0.1	0.2	0.2	0.0	0.1	0.0	0.2	0.5	0.4	0.3
CWI-6	0.2	0.2	0.6	0.0	0.5	0.0	0.0	0.3	0.3	0.0	0.0	0.1	0.0	1.1	1.0	1.2
CWI-7	0.8	0.4	2.0	NA	0.6	0.0	0.3	1.0	1.2	0.0	0.1	0.1	0.1	NA	NA	NA
CWII-1	1.8	1.1	3.3	0.0	2.2	0.1	0.5	1.5	1.6	0.9	5.0	5.2	4.5	5.0	4.8	4.3
CWII-2	0.4	0.3	1.0	0.0	0.5	0.1	0.2	0.5	0.6	0.0	3.3	3.5	3.1	1.8	1.6	1.8
CWII-3	0.3	0.1	1.0	0.0	0.5	0.0	0.3	0.9	1.0	0.7	2.2	2.4	2.4	3.0	2.8	2.7
CWII-4	0.7	0.3	1.5	NA	0.1	0.1	0.5	1.6	1.4	0.8	1.5	1.7	1.8	2.0	1.6	1.9
CWII-5	0.2	0.0	0.4	0.0	0.1	0.0	0.1	0.1	0.0	0.2	0.2	0.1	1.2	1.1	1.0	1.7
CWII-6	0.6	0.8	1.0	NA	0.0	0.0	0.2	NA	NA	NA	NA	NA	0.8	NA	NA	NA
CWII-7	0.0	0.0	0.0	0.0	0.0	0.0	0.0	0.0	0.0	0.5	0.0	0.0	0.0	0.0	0.0	0.1
CWII-8	0.0	0.0	0.0	0.0	0.0	0.0	0.0	0.1	0.2	0.0	0.0	0.0	0.0	0.0	0.0	0.0
CWII-9	0.1	0.1	0.5	0.0	0.0	0.0	0.0	0.0	0.0	0.6	0.3	0.2	0.6	0.2	0.1	0.4
NW-1	0.0	0.0	0.0	0.0	0.0	0.0	0.0	0.0	0.0	0.0	0.0	0.0	0.0	0.0	0.0	NA
NW-2	0.0	0.0	0.0	0.0	0.0	0.0	0.0	0.0	0.0	0.0	0.0	0.0	0.0	0.0	0.0	0.0
NW-3	0.0	0.0	0.0	0.0	0.0	0.0	0.0	0.0	0.0	0.0	0.0	0.0	0.0	0.0	0.0	0.0
NW-4	0.0	0.0	0.0	0.0	0.0	0.0	0.0	0.0	0.0	0.0	0.0	0.0	0.0	0.0	0.0	0.0
NW-5	0.0	0.0	0.0	0.0	0.0	0.0	0.0	0.0	0.0	0.0	0.0	0.0	0.0	0.0	0.0	0.0
NW-6	0.0	0.0	0.0	0.0	0.0	0.0	0.0	0.0	0.0	0.0	0.0	0.0	0.0	0.0	0.0	NA
Ext-1	0.0	0.0	0.0	0.0	0.0	0.0	0.0	0.0	0.0	0.0	0.0	0.0	0.0	0.0	0.0	0.0
Ext-2	0.0	0.0	0.0	0.0	0.0	0.0	0.0	0.0	0.0	0.0	0.0	0.0	0.0	0.0	0.0	0.0
Ext-3	0.0	0.0	0.0	0.0	0.0	0.0	0.0	0.0	0.0	0.1	0.0	0.0	0.0	0.0	0.0	0.0
Ext-4	0.0	0.0	0.0	0.0	0.1	0.1	0.0	0.0	0.4	0.1	0.0	0.0	0.0	0.1	0.0	0.0
Ext-5	0.0	0.0	0.0	0.0	0.0	0.0	0.0	0.0	0.3	0.0	0.0	0.0	0.0	0.0	0.1	0.0
N-1	0.0	NA	NA	NA	NA	0.0	0.0	0.0	0.0	NA	0.0	0.0	0.0	0.0	NA	0.0
N-2	2.0	2.3	2.0	0.0	2.5	0.0	1.5	1.5	0.0	4.0	3.5	3.8	3.8	9.0	8.4	0.6
N-3	0.0	0.7	0.0	0.0	0.0	0.0	0.0	0.0	1.4	0.0	0.0	0.0	0.0	0.0	0.0	0.0
N-4	0.0	0.0	0.0	NA	0.0	0.0	0.0	0.0	0.0	0.0	0.0	0.0	0.0	0.0	0.0	0.1
N-5	0.0	0.0	0.0	NA	0.0	0.0	0.0	0.0	0.0	0.0	0.1	0.2	0.1	0.0	0.0	0.0
N-6	0.0	NA	NA	NA	0.0	0.0	0.0	0.0	0.0	0.0	0.0	0.0	0.0	NA	NA	0.0
BS-1	0.1	0.1	0.0	0.0	0.2	0.0	0.0	0.0	0.0	0.8	0.0	0.0	0.0	0.5	0.5	0.3

NA - Not Available

Measured in % Volume

*Note: Data reported prior to June 2021 was done by prior consultant*

**Table 4 (continued)**  
**Historical Landfill Gas Control Well Methane Data**  
**Town of Huntington East Northport Landfill, East Northport, New York**  
*for period of record between January, 2006 to Present*

Well	1/10	2/10	3/10	4/10	5/10	6/10	7/10	8/10	9/10	10/10	11/10	1/12	2/12	3/12	4/12	5/12
CWI-4	0.1	NA	0.0	0.1	0.5	0.1	0.0	0.1	0.1	0.0	0.0	0.1	0.0	0.0	0.1	0.2
CWI-5	1.0	1.0	0.8	0.2	0.3	1.0	0.0	0.7	0.5	0.2	0.2	1.0	0.3	0.4	0.9	0.0
CWI-6	NA	0.0	1.2	1.1	0.8	0.7	NA	0.6	0.8	0.6	0.2	0.7	0.0	0.0	0.7	0.2
CWI-7	NA	NA	NA	NA	NA	NA	NA	NA	NA	0.3	1.0	1.6	0.1	0.2	0.1	0.0
CWII-1	4.0	3.5	5.0	4.2	4.1	3.3	6.0	6.0	5.0	1.1	5.0	5.0	0.6	0.5	5.0	3.0
CWII-2	1.5	1.0	2.3	1.9	2.1	1.6	3.0	2.2	2.0	6.0	1.5	3.0	0.2	0.3	0.2	12.0
CWII-3	1.5	1.4	1.2	0.0	0.3	1.3	6.0	3.5	2.2	3.0	1.1	10.0	0.1	0.3	3.0	2.5
CWII-4	2.0	2.0	0.5	0.1	0.0	1.5	2.2	1.5	1.3	2.8	1.3	4.0	0.0	0.0	2.0	1.5
CWII-5	0.5	1.0	NA	0.1	0.1	1.0	2.1	1.6	1.5	1.5	0.7	0.7	0.0	0.0	1.5	0.0
CWII-6	NA	NA	NA	NA	NA	NA	NA	NA	NA	1.1	NA	0.0	N/A	N/A	NA	NA
CWII-7	0.1	0.0	0.0	0.1	0.1	0.0	0.0	0.0	0.1	0.0	0.1	0.1	0.0	0.0	0.1	0.0
CWII-8	0.1	0.0	0.0	0.0	0.5	0.1	0.4	0.0	0.0	0.0	0.0	0.0	0.0	0.0	0.0	0.1
CWII-9	0.2	0.1	0.0	0.1	0.1	0.2	0.0	0.5	0.5	0.4	0.4	0.1	0.0	0.0	0.6	0.3
NW-1	0.0	0.0	0.0	0.1	0.0	0.0	0.0	0.0	0.0	0.0	0.0	0.0	0.0	0.0	0.0	0.0
NW-2	0.0	0.0	0.0	0.1	0.0	0.0	0.0	0.0	0.0	0.0	0.0	0.0	0.0	0.0	0.0	0.0
NW-3	0.0	0.0	0.0	0.0	0.0	0.0	0.0	0.0	0.0	0.0	0.1	0.0	0.0	0.0	0.0	0.0
NW-4	0.0	0.0	0.0	0.1	0.2	0.0	0.0	0.0	0.0	0.0	0.1	0.0	0.0	0.0	0.0	0.0
NW-5	0.0	0.0	0.0	0.0	0.0	0.0	0.0	0.0	0.0	0.0	0.0	0.0	0.0	0.0	0.0	0.0
NW-6	0.0	0.0	0.0	0.0	0.0	0.0	0.0	0.0	0.0	0.0	0.0	0.0	0.0	0.0	0.0	0.0
Ext-1	0.0	0.0	0.0	0.0	0.0	0.0	0.0	0.0	0.0	0.0	0.0	0.0	0.0	0.0	0.0	0.0
Ext-2	0.0	0.0	0.0	0.0	0.0	0.0	0.0	0.0	0.0	0.0	0.1	0.0	0.0	0.0	0.1	0.0
Ext-3	0.1	0.4	0.2	0.0	0.0	0.2	0.0	0.4	0.4	0.4	0.5	1.5	0.0	0.0	0.1	0.0
Ext-4	0.1	0.4	0.0	0.0	0.1	0.0	0.0	0.0	0.0	0.0	0.1	0.3	0.0	0.0	0.3	0.0
Ext-5	0.1	0.3	0.0	0.0	0.0	0.0	0.0	0.0	0.0	0.0	0.2	0.2	0.0	0.0	0.1	0.0
N-1	0.0	0.0	NA	0.0	0.0	0.0	0.0	0.0	0.0	0.0	0.0	0.0	0.0	0.0	0.0	0.0
N-2	4.5	4.0	NA	0.0	1.6	0.0	0.0	0.0	4.0	4.2	3.5	0.0	N/A	0.2	0.0	0.0
N-3	0.0	0.0	0.0	0.0	0.0	0.0	0.0	0.0	0.0	0.0	0.0	0.0	0.0	0.0	0.0	0.0
N-4	0.0	NA	0.0	0.0	0.0	0.0	0.0	0.0	0.0	0.0	0.0	0.0	0.0	0.0	0.0	0.0
N-5	0.0	0.0	0.0	0.0	0.0	0.0	0.0	0.0	0.0	0.0	0.0	0.0	0.0	0.0	0.0	0.0
N-6	NA	NA	NA	NA	NA	NA	NA	NA	0.0	0.0	0.0	0.0	0.0	0.1	0.1	0.0
BS-1	0.4	0.3	0.0	0.0	0.1	0.1	0.0	0.2	0.5	0.2	0.4	1.0	0.0	0.7	0.6	0.5

NA - Not Available

Measured in % Volume

*Note: Data reported prior to June 2021 was done by prior consultant*

**Table 4 (continued)**  
**Historical Landfill Gas Control Well Methane Data**  
**Town of Huntington East Northport Landfill, East Northport, New York**  
*for period of record between January, 2006 to Present*

Well	6/12	7/12	8/12	9/12	10/12	11/12	12/12	1/13	2/13	3/13	4/13	5/13	6/13	7/13	8/13	9/13
CWI-4	0.1	0.1	0.0	0.0	NA	0.0	0.1	0.1	0.0	0.0	0.0	0.1	0.1	0.1	0.0	0.0
CWI-5	0.5	0.3	1.0	0.5	NA	0.5	0.4	0.4	0.4	0.4	0.2	0.3	0.5	0.5	0.0	0.0
CWI-6	1.0	0.6	0.7	0.8	NA	0.3	0.6	0.5	0.4	0.4	0.2	0.4	0.5	0.2	0.0	0.0
CWI-7	1.5	0.3	NA	NA	NA	0.8	0.7	1.0	1.0	1.3	0.0	1.0	1.2	0.6	0.1	0.0
CWII-1	4.6	4.0	8.0	9.0	NA	4.0	9.0	3.3	0.0	5.0	3.0	1.0	0.0	0.7	0.0	0.0
CWII-2	2.5	0.9	2.0	2.8	NA	1.0	1.0	10.0	0.8	1.6	0.6	0.6	1.2	0.2	0.0	0.0
CWII-3	4.2	2.0	3.0	3.0	NA	2.5	2.1	1.5	1.1	2.6	0.5	1.8	3.2	0.8	0.0	0.0
CWII-4	2.4	1.1	1.9	2.1	NA	2.0	2.4	1.8	2.0	2.5	1.0	1.3	NA	0.8	0.0	0.0
CWII-5	1.5	1.5	1.5	1.5	NA	0.5	1.0	0.2	0.1	0.1	0.1	2.0	1.2	1.0	0.2	0.0
CWII-6	NA	NA	NA	NA	NA	NA	NA	NA	NA	NA	NA	NA	NA	NA	NA	0.1
CWII-7	0.1	0.0	0.0	0.1	NA	0.0	0.1	0.1	0.0	0.0	0.0	0.0	0.0	0.0	0.0	0.0
CWII-8	0.0	0.0	0.0	0.0	NA	0.0	0.0	0.0	0.0	0.0	0.0	1.1	0.0	0.0	0.0	0.0
CWII-9	0.4	0.3	0.3	0.2	NA	0.0	0.3	0.3	0.0	0.0	0.0	0.3	0.5	0.2	0.0	0.0
NW-1	0.0	0.0	0.0	0.0	NA	0.0	0.0	0.0	0.0	0.0	0.0	0.0	0.0	0.0	0.0	0.0
NW-2	0.0	0.0	0.0	0.0	NA	0.0	0.0	0.0	0.0	0.0	0.0	0.0	0.0	0.0	0.0	0.0
NW-3	0.0	0.0	0.0	0.0	NA	0.0	0.0	0.0	0.0	0.0	0.0	0.0	0.0	0.0	0.0	0.0
NW-4	0.0	0.0	0.0	0.0	NA	0.0	0.0	0.0	0.0	0.0	0.0	0.0	0.0	0.0	0.0	0.0
NW-5	0.0	0.0	0.0	0.0	NA	0.0	0.0	0.0	0.0	0.0	0.0	0.0	0.0	0.0	0.0	0.0
NW-6	0.0	0.0	0.0	0.0	NA	0.0	0.0	0.0	0.0	0.0	0.0	0.0	0.0	0.0	0.0	0.0
Ext-1	0.0	0.0	0.0	0.0	NA	0.0	0.0	0.0	0.0	0.0	0.0	0.0	0.0	0.0	0.0	0.0
Ext-2	0.0	0.0	0.1	0.0	NA	0.0	0.0	0.0	0.0	0.1	0.0	0.0	0.0	0.0	0.0	0.0
Ext-3	0.9	0.0	0.5	0.7	NA	0.6	0.7	1.0	0.2	1.1	0.5	0.2	0.7	0.0	0.0	0.0
Ext-4	0.1	0.0	0.0	0.0	NA	0.2	0.2	0.2	0.0	0.3	0.2	0.0	0.2	0.0	0.0	0.0
Ext-5	0.0	0.0	0.0	0.0	NA	0.1	0.0	0.0	0.0	0.0	0.0	0.1	0.0	0.0	0.0	0.0
N-1	0.0	NA	NA	NA	NA	NA	NA	NA	NA	NA	NA	NA	NA	NA	NA	0.0
N-2	0.0	0.0	0.0	0.0	NA	0.0	0.0	0.0	0.0	0.0	0.0	0.0	0.0	0.0	0.0	0.0
N-3	0.0	0.0	0.0	0.0	NA	0.0	0.0	0.0	0.0	0.0	0.0	0.0	0.0	0.0	0.0	0.0
N-4	0.0	0.0	0.0	0.0	NA	0.0	0.0	0.0	NA	0.0	0.0	0.0	0.0	0.0	0.0	0.0
N-5	0.0	0.0	0.0	0.0	NA	0.0	NA	0.0	0.0	0.0	0.0	0.0	0.0	0.0	0.0	0.0
N-6	0.1	0.0	0.0	0.0	NA	NA	0.0	0.0	0.1	0.0	0.0	0.0	0.0	0.0	0.0	0.0
BS-1	0.7	0.2	0.5	0.5	NA	0.4	0.3	0.3	0.3	0.4	0.3	0.0	0.2	0.3	0.0	0.0

NA - Not Available

Measured in % Volume

*Note: Data reported prior to June 2021 was done by prior consultant*

**Table 4 (continued)**  
**Historical Landfill Gas Control Well Methane Data**  
**Town of Huntington East Northport Landfill, East Northport, New York**  
*for period of record between January, 2006 to Present*

Well	10/13	11/13	12/13	1/14	2/14	3/14	4/14	5/14	6/14	7/14	8/14	9/14	10/14	12/14	3/15	6/15
CWI-4	0.1	0.0	0.0	0.0	0.0	0.0	0.0	0.0	0.1	0.1	0.1	0.0	0.4	0.1	0.0	0.1
CWI-5	0.3	0.1	0.3	0.2	0.5	0.6	0.2	0.1	0.3	0.2	0.2	0.2	0.4	0.6	0.3	0.4
CWI-6	0.2	0.3	0.2	0.1	0.2	0.4	0.0	0.3	0.3	0.3	0.2	0.1	0.2	0.7	0.3	0.6
CWI-7	0.5	0.5	0.3	0.2	0.3	0.4	0.3	0.5	0.6	0.7	0.7	0.6	N/A	1.0	1.0	0.5
CWII-1	3.5	3.8	5.0	3.1	2.5	2.8	3.4	3.5	4.0	3.0	3.5	2.2	2.5	4.4	4.0	1.1
CWII-2	0.7	1.0	1.0	0.7	1.2	1.8	0.5	1.0	1.2	1.1	0.8	0.4	0.6	1.4	2.0	2.0
CWII-3	1.7	1.5	1.7	1.0	2.0	2.1	1.3	2.0	2.5	1.7	2.2	0.5	1.1	2.2	1.5	3.1
CWII-4	1.1	1.0	2.3	1.5	0.0	0.0	1.5	1.4	1.0	2.0	1.5	0.7	1.0	1.5	0.5	3.3
CWII-5	0.3	0.2	0.1	0.0	0.0	0.0	0.1	0.4	0.5	1.2	0.5	0.2	1.3	0.2	0.1	0.3
CWII-6	0.7	0.6	N/A	N/A	N/A	N/A	N/A	N/A	N/A	N/A	N/A	N/A	N/A	N/A	0.1	NA
CWII-7	0.1	0.1	0.1	0.0	0.0	0.0	0.0	0.0	0.0	0.1	0.0	0.0	0.2	0.1	0.2	0.1
CWII-8	0.0	0.0	0.0	0.0	0.0	0.0	0.0	0.0	0.0	0.0	0.0	0.0	0.2	0.1	1.0	0.0
CWII-9	0.2	0.2	0.1	0.0	0.0	0.0	0.1	0.2	0.2	0.4	0.3	0.2	0.3	0.1	0.7	0.2
NW-1	0.0	0.0	0.0	0.0	0.0	0.0	0.0	0.0	0.0	0.0	0.0	0.0	0.0	0.0	0.0	0.0
NW-2	0.0	0.0	0.0	0.0	0.0	0.0	0.0	0.0	0.0	0.0	0.0	0.0	0.0	0.0	0.0	0.0
NW-3	0.0	0.0	0.0	0.0	0.0	0.0	0.0	0.0	0.0	0.0	0.0	0.0	0.0	0.0	0.0	0.0
NW-4	0.0	0.0	0.0	0.0	0.0	0.0	0.0	0.0	0.0	0.0	0.0	0.0	0.0	0.0	0.0	0.0
NW-5	0.0	0.0	0.0	0.0	0.0	0.0	0.0	0.0	0.0	0.0	0.0	0.0	0.0	0.0	0.0	0.0
NW-6	0.0	0.0	0.0	0.2	0.0	0.0	0.0	0.0	0.0	0.0	0.0	0.0	0.0	0.0	0.0	0.0
Ext-1	0.0	0.0	0.0	0.1	0.0	0.0	0.0	0.0	0.0	0.0	0.0	0.0	0.0	0.0	0.0	0.0
Ext-2	0.1	0.0	0.0	0.1	0.0	0.0	0.0	0.0	0.1	0.1	0.0	0.0	0.1	0.4	0.2	0.2
Ext-3	1.0	0.1	0.7	0.0	0.1	0.2	0.5	0.7	0.5	0.1	0.1	0.0	0.0	0.2	0.2	1.7
Ext-4	0.2	0.2	0.2	0.1	0.0	0.0	0.2	0.2	0.1	0.0	0.0	0.1	0.0	0.2	0.0	0.0
Ext-5	0.1	0.1	0.0	0.0	0.0	0.0	0.0	0.0	0.0	0.0	0.0	0.0	0.0	0.0	0.0	0.0
N-1	0.0	0.0	N/A	N/A	N/A	N/A	N/A	N/A	N/A	N/A	N/A	N/A	N/A	N/A	0.0	NA
N-2	0.0	0.0	0.1	0.0	0.0	0.0	0.0	0.0	0.0	0.0	0.0	0.0	0.0	0.0	0.1	0.0
N-3	0.0	0.0	0.0	0.0	0.0	0.0	0.0	0.0	0.0	0.0	0.0	0.0	0.0	0.0	0.0	0.0
N-4	0.0	0.0	0.0	0.0	N/A	0.0	0.0	0.0	0.0	0.0	0.0	0.0	0.0	0.0	0.0	0.0
N-5	0.0	0.0	0.0	0.0	0.0	0.0	0.0	0.0	0.0	0.0	0.0	0.0	0.0	0.0	0.1	0.0
N-6	0.2	0.1	0.1	0.0	N/A	0.0	0.0	0.0	0.0	0.0	0.0	0.0	0.0	0.0	0.1	0.1
BS-1	0.2	0.2	0.4	0.2	0.3	0.1	0.2	0.3	0.2	0.4	0.3	0.2	0.3	0.2	0.0	0.5

NA - Not Available

Measured in % Volume

*Note: Data reported prior to June 2021 was done by prior consultant*

**Table 4 (continued)**  
**Historical Landfill Gas Control Well Methane Data**  
**Town of Huntington East Northport Landfill, East Northport, New York**  
*for period of record between January, 2006 to Present*

Well	9/15	12/15	3/16	6/16	9/16	12/16	3/17	6/17	9/17	12/17	3/18	6/18	9/18	12/18	3/19	6/19
CWI-4	0.2	0.1	0.0	0.0	0.0	0.0	0.0	0.1	0.0	0.0	0.0	0.0	0.0	0.0	0.0	0.0
CWI-5	0.4	0.5	0.3	0.3	0.1	0.0	0.0	0.2	0.4	0.1	0.0	0.0	0.2	0.0	0.0	0.0
CWI-6	0.3	NA	0.6	0.8	0.4	0.0	0.1	0.3	0.4	0.2	0.2	0.1	0.1	0.0	0.0	0.3
CWI-7	0.6	0.7	0.3	0.7	1.1	0.8	0.3	0.5	0.4	0.1	0.6	0.3	0.3	0.0	0.0	0.4
CWII-1	3.7	3.0	5.2	2.5	3.2	3.0	2.1	1.5	2.0	1.4	1.5	1.4	1.5	0.0	0.0	1.4
CWII-2	0.8	0.6	3.5	0.2	0.0	0.2	0.1	0.1	0.4	0.4	1.0	0.6	0.8	0.0	0.0	0.3
CWII-3	1.6	2.0	4.0	1.1	2.0	3.0	3.6	2.1	2.5	2.0	1.9	2.9	3.1	0.0	0.0	1.3
CWII-4	1.0	4.5	2.5	1.0	1.1	0.0	1.2	1.0	1.2	1.0	0.5	1.0	1.0	0.0	0.0	0.9
CWII-5	0.4	0.2	0.1	0.2	0.2	0.0	0.0	0.1	0.3	0.0	0.0	0.0	0.0	0.0	0.0	0.1
CWII-6	0.7	0.0	0.0	0.2	0.0	0.0	0.0	0.1	NA	NA	NA	NA	NA	NA	NA	NA
CWII-7	0.1	0.0	0.0	NA	0.0	0.0	0.0	0.0	0.0	0.0	0.0	0.0	NA	NA	0.0	0.9
CWII-8	0.0	0.1	0.0	0.0	0.0	0.0	0.0	0.0	0.0	0.0	0.0	0.0	0.0	0.0	0.0	0.0
CWII-9	0.2	0.0	0.0	0.1	0.1	0.0	0.0	0.0	0.2	0.0	0.0	0.0	0.0	0.0	0.0	0.0
NW-1	0.0	0.0	0.0	0.0	0.0	0.0	0.0	0.0	0.0	0.0	0.0	0.0	0.0	0.0	0.0	0.0
NW-2	0.0	0.0	0.0	0.0	0.0	0.0	0.0	0.0	0.0	0.0	0.0	0.0	0.0	0.0	0.0	0.0
NW-3	0.0	0.0	0.0	0.0	0.0	0.0	0.0	0.0	0.0	0.0	0.0	0.0	0.0	0.0	0.0	0.0
NW-4	0.0	0.0	0.0	0.0	0.0	0.0	0.0	0.0	0.0	0.0	0.0	0.0	0.0	0.0	0.0	0.0
NW-5	0.0	0.0	0.0	0.0	0.0	0.0	0.0	0.0	0.0	0.0	0.0	0.0	0.0	0.0	0.0	0.0
NW-6	0.0	0.0	0.0	0.0	0.0	0.0	0.0	0.0	0.0	0.0	0.0	0.0	0.0	0.0	0.0	0.0
Ext-1	0.1	0.1	0.0	0.0	0.0	0.0	0.0	0.0	NA	0.0	0.0	0.0	0.0	0.0	0.0	0.0
Ext-2	0.1	0.2	0.1	0.1	0.0	0.0	0.1	0.0	NA	0.0	0.0	0.0	0.0	0.0	0.0	0.0
Ext-3	1.2	2.0	0.2	0.1	0.4	0.3	0.5	0.0	NA	0.0	0.0	0.0	0.0	0.0	0.0	0.0
Ext-4	0.1	0.4	0.3	0.2	0.1	0.0	0.1	0.0	0.1	0.0	0.0	0.0	0.0	0.0	0.0	0.0
Ext-5	0.1	0.1	0.1	0.0	0.1	0.1	0.0	0.1	0.0	0.0	0.0	0.0	0.0	0.0	0.0	0.0
N-1	0.0	0.0	0.0	0.0	0.0	NA	NA	NA	NA	0.0	NA	NA	NA	0.0	0.0	NA
N-2	0.0	0.0	0.0	0.0	0.0	0.0	0.0	0.0	0.0	0.0	0.0	0.0	NA	0.0	0.0	0.0
N-3	0.0	0.0	0.0	0.0	0.0	NA	0.0	0.0	0.0	0.0	0.0	0.0	0.0	0.0	0.0	0.0
N-4	0.0	0.0	0.0	0.0	0.0	0.0	0.0	0.0	0.0	0.0	0.0	0.0	0.0	0.0	0.0	0.0
N-5	0.0	0.0	0.0	0.0	0.0	0.0	0.0	0.0	0.1	0.0	0.0	0.0	0.1	0.0	0.0	0.0
N-6	0.0	0.0	0.0	0.0	0.0	0.0	0.0	0.0	0.05	0.0	0.0	0.0	0.00	0.0	0.0	0.0
BS-1	0.7	0.5	0.5	0.2	0.1	0.0	0.0	0.0	0.1	0.0	0.0	0.0	0.0	0.0	0.0	0.0

NA - Not Available

Measured in % Volume

*Note: Data reported prior to June 2021 was done by prior consultant*

**Table 4 (continued)**  
**Historical Landfill Gas Control Well Methane Data**  
**Town of Huntington East Northport Landfill, East Northport, New York**  
*for period of record between January, 2006 to Present*

Well	9/19	12/19	3/20	6/20	9/20	12/20	1/21	6/21	9/21	11/21	2/22					
CWI-4	0.0	0.1	0.1	0.0	0.0	0.0	0.0	0.4	0.1	0.1	0.0					
CWI-5	0.3	0.3	0.2	0.0	0.0	0.0	0.0	0.4	0.2	0.4	0.2					
CWI-6	0.2	0.2	0.2	0.1	0.1	0.1	0.1	0.3	0.2	0.3	0.1					
CWI-7	0.3	0.5	0.4	0.1	0.1	0.1	0.1	0.4	0.2	0.4	0.1					
CWII-1	1.1	2.0	2.1	1.1	1.2	0.8	0.9	1.9	0.7	2.0	1.2					
CWII-2	0.2	0.3	0.4	0.0	0.0	0.0	0.0	0.1	0.0	0.1	0.0					
CWII-3	0.9	2.9	3.0	1.5	2.5	2.1	0.7	1.8	0.0	1.0	0.4					
CWII-4	0.7	0.0	0.0	0.0	0.0	0.0	0.0	1.1	0.1	0.8	0.6					
CWII-5	0.3	0.0	0.0	0.0	0.0	0.0	0.0	0.2	0.0	0.0	0.0					
CWII-6	0.3	NA	NA	NA	NA	NA	NA	NA	0.1	0.0	0.0					
CWII-7	NA	NA	0.0	0.0	0.0	0.0	0.0	0.0	0.0	0.0	0.0					
CWII-8	0.0	0.0	0.0	0.0	0.0	0.0	0.0	0.0	0.0	0.0	0.0					
CWII-9	0.1	0.0	0.0	0.0	0.0	0.0	0.0	0.0	0.0	0.0	0.0					
NW-1	0.3	0.1	0.1	0.0	0.0	0.0	0.0	0.0	0.0	0.0	0.0					
NW-2	0.0	0.1	0.1	0.0	0.0	0.0	0.0	0.0	0.0	0.0	0.0					
NW-3	0.0	0.1	0.1	0.0	0.0	0.0	0.0	0.0	0.0	0.0	0.0					
NW-4	0.1	0.1	0.0	0.0	0.0	0.0	0.0	0.0	0.0	0.1	0.0					
NW-5	0.1	0.0	0.0	0.0	0.0	0.0	0.0	0.0	0.0	0.0	0.0					
NW-6	0.1	0.0	0.0	0.0	0.0	0.0	0.0	0.0	0.0	0.1	0.0					
Ext-1	0.0	0.0	0.0	0.0	0.0	0.0	0.0	0.0	0.0	0.0	0.0					
Ext-2	0.0	0.0	0.0	0.0	0.0	0.0	0.0	0.0	0.0	0.0	0.0					
Ext-3	0.1	0.6	0.5	0.2	0.1	0.0	0.0	0.0	0.0	0.0	0.0					
Ext-4	0.0	0.1	0.1	0.0	0.0	0.0	0.0	0.0	0.0	0.0	0.0					
Ext-5	0.0	0.0	0.0	0.0	0.0	0.0	0.0	0.0	0.0	0.0	0.0					
N-1	0.0	0.0	0.0	0.0	0.0	0.0	0.0	0.0	0.0	0.0	NA					
N-2	0.0	0.0	0.0	0.0	0.0	0.0	0.0	0.0	0.0	0.0	0.0					
N-3	0.0	0.0	0.0	0.0	0.0	0.0	0.0	0.0	0.0	0.0	0.0					
N-4	0.0	0.0	0.0	0.0	0.0	0.0	0.0	0.0	0.0	0.0	0.0					
N-5	0.0	0.0	0.0	NA	0.0	0.0	0.0	0.0	0.0	0.0	0.0					
N-6	0.0	0.1	0.1	0.0	0.0	0.0	0.0	0.0	0.0	0.0	0.0					
BS-1	0.2	0.1	0.1	0.1	0.1	0.1	0.0	0.3	0.2	0.2	0.2					

NA - Not Available

Measured in % Volume

*Note: Data reported prior to June 2021 was done by prior consultant*

J:\\_HazWaste\5629 (East Northport Landfill)\Monitoring Reports\Landfill Gas Monitoring\2021Q4\Appendicies

## **APPENDIX E**

### **TABLE 5 – HISTORICAL LANDFILL GAS CONTROL WELL VACUUM DATA**

**Table 5**  
**Historical Landfill Gas Control Well Vacuum Data**  
**East Northport Landfill, East Northport, New York**  
for period of record between January, 2006 to Present

Well	1/06	2/06	3/06	4/06	5/06	6/06	7/06	8/06	9/06	10/06	11/06	12/06	1/07	2/07	3/07	4/07	5/07	6/07	7/07
CWI-4	-2.9	-2.6	-2.6	-3.0	-2.6	-0.1	-3.3	-5.2	-1.2	-2.8	-3.9	-4.2	-3.0	-3.6	-3.0	-3.0	-2.8	-2.8	-2.6
CWI-5	-3.3	-3.1	-3.2	-2.6	-2.8	0.0	-2.8	-1.9	-3.4	-2.3	-4.4	-4.5	-3.4	-3.6	-3.2	-3.2	-2.9	-2.9	-2.7
CWI-6	-3.5	-3.1	-3.0	-3.0	-2.9	-0.3	-4.0	-6.4	-2.9	-2.9	-4.7	-4.3	-3.5	-3.7	-3.2	-3.2	-3.0	-2.9	-2.7
CWI-7	-3.0	-3.0	-2.8	-2.8	-2.8	-0.4	-2.8	-2.4	-3.1	-2.8	-4.5	-4.1	-3.3	NA	-3.0	-2.9	-2.8	-2.7	-2.5
CWII-1	-3.1	-3.0	-3.0	-2.9	-2.7	0.0	-3.2	-6.3	-2.9	-2.6	-4.3	-4.3	-3.4	-3.4	-2.7	-3.0	-2.7	-2.6	-2.5
CWII-2	-3.0	-2.9	-2.7	-2.8	-2.7	-0.5	-3.5	-5.9	-5.4	-2.6	-4.2	-3.9	-3.3	-3.4	-2.6	-2.8	-2.6	-2.5	-2.4
CWII-3	-3.0	-2.9	-2.9	-2.7	-2.5	0.0	-2.6	-6.8	-0.6	-2.7	-4.3	-4.1	-3.1	-3.4	-2.7	NA	NA	-2.6	-2.4
CWII-4	-2.8	-2.8	-2.4	-2.6	-2.7	-0.9	-3.2	-6.8	-2.7	-2.6	-5.0	-4.0	-3.1	-3.7	-2.7	-2.6	-2.5	-2.5	-2.3
CWII-5	-2.8	-2.5	-2.6	-2.7	-2.1	0.0	-2.3	-7.0	-2.6	-2.6	-0.3	-4.2	-3.2	-3.6	-2.6	-2.7	-2.5	-2.4	-2.3
CWII-6	-1.4	-1.4	-1.5	-1.6	-1.9	-0.1	-1.0	-0.2	-1.7	-1.4	-1.7	-2.3	-2.0	-0.2	-1.7	-1.6	-1.7	-1.7	-1.6
CWII-7	-1.2	-1.0	-1.1	-0.7	-1.4	-0.2	-0.8	-0.2	-1.3	-1.1	-1.5	-1.7	-1.7	-1.3	-1.4	-1.4	-1.2	-1.3	-1.1
CWII-8	0.0	0.0	-0.2	0.0	0.0	-0.1	0.0	0.0	0.0	0.0	0.0	0.0	-0.1	-0.1	0.0	-0.1	-0.1	-0.1	0.0
CWII-9	-0.9	-0.6	-0.7	-1.0	-0.8	-0.9	-0.6	-0.2	-0.9	-0.8	-0.9	-1.2	-1.4	-1.0	-1.0	-1.1	-0.9	-0.9	-0.8
NW-1	-2.8	-2.8	-2.8	-2.6	-2.2	-2.4	-3.2	-4.0	-3.7	-2.5	-3.2	-3.9	-2.9	-3.4	-3.0	-2.9	-2.8	-2.6	-2.1
NW-2	-3.3	-2.9	-2.7	-2.6	-2.9	-2.7	-3.4	-4.5	-3.4	-3.2	4.2	-4.5	-3.3	-3.7	-3.2	-3.2	-3.1	-3.9	-2.8
NW-3	-2.8	-2.9	-2.8	-2.7	-2.7	-2.8	-3.2	-4.0	-3.2	-2.8	-4.0	-4.0	-2.3	-3.4	-2.9	-3.0	-2.7	-2.6	-2.6
NW-4	-2.9	-3.0	-3.0	-3.0	-2.7	-2.6	-2.4	-3.6	-2.8	-2.6	-4.0	-3.6	-2.8	-3.3	-2.6	-2.9	-2.6	-2.4	-2.4
NW-5	-2.3	-2.9	-2.6	-2.6	-1.2	-2.5	-2.2	-2.6	-2.3	-2.1	-3.6	-2.9	-2.3	-3.0	-2.2	-2.6	-2.2	-1.9	-2.1
NW-6	-2.2	-3.0	-2.9	-3.0	-1.6	-2.1	-2.8	-2.8	-2.5	-2.8	-3.1	-3.0	-2.3	-2.6	-2.3	-1.6	-2.3	-2.1	-2.0
Ext-1	0.0	0.0	0.0	-0.2	-0.2	-0.3	0.0	-0.7	-0.1	-0.1	-3.6	-3.4	-2.7	-0.1	0.0	0.0	0.0	-1.7	-0.1
Ext-2	-0.6	-0.8	-0.9	-0.8	-0.8	-0.6	-0.1	-3.0	-0.9	-0.7	-3.4	NA	-2.1	-1.1	-0.8	-0.9	-0.9	-2.1	-0.9
Ext-3	-2.1	-2.8	-2.7	-2.6	-2.2	-1.9	-0.5	-3.3	-2.3	-2.1	-3.3	-3.2	-2.3	-2.9	-2.2	-2.5	-2.3	-2.3	-2.1
Ext-4	-2.0	-1.9	-1.8	-1.6	-2.1	-2.0	-0.6	-2.0	-2.0	-2.1	-3.2	-3.5	-2.0	-2.7	-2.2	-2.3	-2.1	-0.9	-2.0
Ext-5	-0.8	-1.6	-1.4	-1.6	-1.7	-1.5	-0.2	-0.1	-1.6	-1.6	-2.4	-2.6	-2.0	-2.3	-2.0	-2.1	-1.9	-0.1	-1.7
N-1	-0.3	-0.2	-0.4	-0.4	-0.6	0.0	-1.0	-2.8	-1.5	-0.2	-0.2	-0.2	0.0	0.1	0.0	-0.2	-0.1	0.0	-0.1
N-2	-0.4	-0.4	-0.8	-0.7	NA	0.0	-0.1	-0.9	-0.3	-0.6	-0.5	-0.4	-0.3	-0.4	-0.4	-0.6	-0.3	-0.3	-0.5
N-3	-0.1	-0.1	0.0	-0.2	-0.1	-0.1	0.0	-0.3	-0.1	-0.1	-0.1	-0.2	0.0	0.0	-0.1	-0.1	-0.1	-0.1	-0.1
N-4	0.0	0.0	0.0	-0.1	-0.1	-0.1	0.0	-0.2	-0.1	-0.2	-0.1	-0.1	0.0	-0.2	-0.8	-0.1	-0.1	0.0	-0.1
N-5	-0.1	-0.1	0.0	-1.0	-0.1	-0.1	-0.1	-0.2	-0.2	-0.1	-0.1	-0.2	0.0	-0.2	-0.1	-0.1	-0.1	-0.1	-0.1
N-6	NA	-0.8	-0.1	-0.2	NA	0.0	-1.1	-0.2	-0.9	-1.0	NA	NA	NA	NA	NA	-1.1	-0.8	-0.9	-0.9
BS-1	-4.9	-4.2	-5.1	-4.6	-4.6	-3.1	-8.5	-10.1	-6.1	-5.1	-7.3	-7.2	4.0	-5.6	-5.0	-5.1	-4.8	-7.3	-4.3

Measured in inches of H2O

NA - Not Available

*Note: Data reported prior to June 2021 was done by prior consultant*

**Table 5 (continued)**  
**Historical Landfill Gas Control Well Vacuum Data**  
**East Northport Landfill, East Northport, New York**  
for period of record between January, 2006 to Present

Well	8/07	9/07	10/07	11/07	12/07	1/08	2/08	3/08	4/08	5/08	6/08	7/08	8/08	9/08	10/08	11/08	12/08	1/09	2/09
CWI-4	-2.6	-2.5	-2.5	-3.1	-3.0	-2.9	-3.7	-3.7	-1.8	-3.4	-1.8	-2.1	-1.6	-1.9	-1.2	-1.4	0.0	-3.0	-2.8
CWI-5	-2.7	-2.8	-2.7	-3.0	-3.5	-3.1	-3.7	-3.5	-3.0	-2.9	-1.8	-2.3	-1.9	-2.1	-1.3	-1.4	0.0	-3.4	-2.8
CWI-6	-2.6	-2.2	-2.4	-2.9	-3.4	-3.2	-3.3	-3.4	-3.1	-2.9	-1.9	-2.4	-1.8	-2.1	-1.3	-1.2	-0.1	-3.6	-3.0
CWI-7	-2.5	-2.5	-2.4	-2.5	-3.1	-3.0	-3.7	-3.3	-2.7	-2.3	-1.8	-2.4	-1.8	-2.0	-1.1	-0.6	NA	-3.6	-2.9
CWII-1	-2.3	-1.5	-2.4	-2.4	-3.0	-2.9	-4.1	-3.2	-2.6	-2.6	-1.7	-2.4	-1.7	-2.0	-1.2	-1.1	-0.1	-3.5	-2.9
CWII-2	-2.3	-2.3	-2.4	-2.5	-3.5	-2.9	-3.2	-3.6	-2.6	-2.5	-1.6	-2.4	-1.7	-2.0	-1.2	-1.6	-0.1	-3.0	-2.8
CWII-3	-2.3	-2.4	-2.3	-2.4	-2.9	-2.9	-3.7	-3.1	-3.1	-2.3	-1.7	-2.7	-1.6	-2.0	-1.1	-0.9	-0.1	-3.6	-2.7
CWII-4	-3.2	-2.1	-2.2	-2.3	-3.6	-2.9	-1.8	-3.5	-2.5	-2.1	-1.6	-2.4	-1.6	-1.9	-1.1	-1.1	NA	-3.4	-2.7
CWII-5	-2.2	-2.4	-2.2	-2.6	-3.5	-2.9	-3.0	-3.1	-2.8	-2.4	-1.6	-2.5	-1.6	-1.9	-1.1	-1.0	-0.2	-3.5	-2.7
CWII-6	-1.6	-1.5	-1.5	-1.3	-0.2	-2.0	-1.2	-2.2	-1.6	-1.7	-1.2	0.0	-1.6	-1.6	-0.7	-0.8	NA	0.0	-1.6
CWII-7	-1.2	-1.1	-1.2	-1.1	-0.3	-1.5	-1.2	-1.7	-1.2	-1.3	-0.9	0.0	-1.2	-1.1	-0.7	-0.6	-0.2	0.0	-1.2
CWII-8	0.0	0.0	-0.1	0.0	0.0	0.0	-0.1	0.0	0.0	-0.1	-0.1	-0.1	0.0	0.0	-0.1	0.0	-0.1	0.0	0.0
CWII-9	-0.2	-0.9	-0.9	-0.9	-0.6	-1.1	-0.2	-0.2	-0.9	-0.9	-0.6	0.0	-0.6	-0.8	-0.6	-0.5	-0.2	0.0	-0.9
NW-1	-2.6	-2.4	-2.5	-2.5	-2.9	-2.8	-3.0	-3.1	-2.7	-2.8	-1.6	-1.9	-1.8	-1.9	-1.1	-1.2	-1.6	-2.9	-2.6
NW-2	-2.8	-1.7	-2.9	-3.1	-3.3	-3.1	-3.4	-3.8	-2.9	-3.2	-2.1	-2.4	-1.7	-2.0	-1.1	-0.8	-1.4	-3.1	-3.4
NW-3	-2.5	-2.0	-2.4	-2.5	-2.8	-2.7	-4.3	-3.1	-2.7	-2.1	-1.8	-2.1	-1.3	-1.8	-1.1	-0.7	-1.0	-2.7	-2.7
NW-4	-2.2	-2.2	-2.3	-2.2	-2.6	-2.4	-3.4	-2.8	-3.1	-2.9	-1.6	-1.9	-1.5	-1.7	-1.0	-1.0	-0.9	-2.3	-2.4
NW-5	-1.8	-1.8	-1.9	-2.0	-2.1	-2.1	-2.5	-2.2	-2.2	-0.9	-1.4	-1.6	-1.2	-1.5	-0.8	-0.6	-1.2	-2.1	-2.0
NW-6	-1.8	-1.8	-1.9	-2.2	-2.2	-2.1	-2.4	-2.4	-2.1	-2.1	-1.3	-1.6	-1.2	-1.4	-0.9	-0.7	-1.3	-2.3	-2.0
Ext-1	-0.1	0.0	0.0	-0.1	-0.1	-2.1	-0.1	-0.1	0.0	-0.1	0.0	-0.1	-1.1	0.0	0.0	-0.1	-0.4	0.0	-0.1
Ext-2	-0.7	-0.8	-0.7	-0.7	-0.9	-0.9	-1.0	-1.0	-0.9	-2.2	-0.9	-0.7	-1.0	-0.5	-0.5	-0.4	-0.7	-0.9	-0.8
Ext-3	-2.1	-2.0	-1.9	-1.9	-2.3	-2.2	-2.6	-2.7	-2.2	-2.2	-1.6	-1.7	-0.6	-1.4	-0.9	-0.7	-0.3	-2.1	-2.0
Ext-4	-1.9	-1.9	-2.2	-1.9	-2.2	-2.1	-2.4	-2.3	-1.9	-2.0	-1.4	-1.1	-1.7	-1.5	-0.9	-0.6	-1.1	-2.0	-1.8
Ext-5	-1.6	-1.5	-1.7	-1.5	-1.9	-1.8	-2.0	-2.1	-1.8	-1.8	-1.1	-0.4	-0.9	-1.2	-0.8	-1.0	-1.4	-1.8	-1.5
N-1	-0.3	-0.2	-0.2	-0.2	-0.2	-0.1	-0.3	-0.2	-0.2	-0.1	-0.3	-0.2	-0.2	-0.2	NA	NA	NA	NA	-0.2
N-2	-0.6	-0.5	-0.7	-0.6	-0.6	-0.6	NA	-0.4	-0.6	-0.7	-0.5	-0.5	-0.6	-0.5	-0.3	-0.5	-0.3	-0.7	-0.7
N-3	-0.2	-0.1	-0.2	0.0	-0.2	-0.1	-0.2	-0.1	-0.1	-0.1	-0.1	-0.3	-0.1	-0.1	-0.2	-0.1	-0.2	-0.2	-0.1
N-4	-0.1	-0.1	-0.1	0.0	-0.2	-0.1	-0.2	0.0	-0.1	-0.1	-0.1	-0.1	-0.1	-0.1	-0.2	-0.1	NA	-0.2	-0.1
N-5	-0.1	-0.1	-0.2	0.0	-0.1	-0.1	-0.1	-0.1	-0.1	-0.2	-0.2	-0.1	-0.2	-0.1	-0.2	-0.1	NA	-0.2	-0.1
N-6	-0.9	-0.8	-0.9	NA	NA	NA	NA	NA	NA	NA	NA	NA	NA	-0.8	NA	NA	NA	-0.1	-0.8
BS-1	-5.6	0.3	-4.4	-4.7	-5.1	-4.5	-5.0	-5.2	-4.2	-4.8	-2.8	-3.2	0.1	-3.0	-1.7	-21.7	0.1	-4.1	0.5

Measured in inches of H2O

NA - Not Available

*Note: Data reported prior to June 2021 was done by prior consultant*

**Table 5 (continued)**  
**Historical Landfill Gas Control Well Vacuum Data**  
**East Northport Landfill, East Northport, New York**  
for period of record between January, 2006 to Present

Well	3/09	4/09	5/09	6/09	7/09	8/09	9/09	10/09	11/09	12/09	1/10	2/10	3/10	4/10	5/10	6/10	7/10	8/10	9/10
CWI-4	-2.5	-2.6	-2.6	-2.9	-2.5	-1.8	-2.3	-2.1	-2.0	-0.75	-0.73	NA	-0.98	-0.60	-0.63	-0.65	-0.76	-0.75	-0.76
CWI-5	-2.7	-1.9	-1.9	-3.3	-2.6	-2.6	-2.4	-2.3	-2.0	-8.60	-1.00	-0.78	-1.13	-0.64	-0.69	-0.70	-0.82	-0.82	-0.82
CWI-6	-2.8	-2.8	-2.8	-3.3	-2.5	-2.6	-2.4	-2.1	-1.8	-8.70	NA	-0.76	-1.18	-0.57	-0.68	-0.69	NA	-0.80	-0.82
CWI-7	-2.7	-2.0	-2.0	-3.4	-2.5	-2.4	-2.3	NA	NA	NA	NA	NA	NA	NA	NA	NA	NA	NA	NA
CWII-1	0.0	-2.7	-2.7	-3.2	-2.5	-2.3	-2.1	-2.0	-2.1	-2.00	-0.84	-0.71	-1.16	-0.59	-0.63	-0.62	-0.71	-0.67	-0.71
CWII-2	-2.5	-2.1	-2.1	-3.0	-2.9	-2.2	-2.1	-1.9	-2.0	-1.90	-0.81	-0.68	-1.12	-0.56	-0.59	-0.60	-0.69	-0.67	-0.70
CWII-3	-2.6	-3.0	-3.0	-3.0	-2.6	-2.4	-2.1	-1.9	-1.8	-1.90	-0.86	-0.69	-1.17	-0.58	-0.60	-0.61	-0.04	-0.69	-0.72
CWII-4	-2.6	-3.1	-3.1	-4.0	-2.6	-2.0	-2.1	-2.8	-2.5	-2.34	-0.84	-0.68	-0.12	-0.57	-0.58	-0.60	-0.68	-0.66	-0.70
CWII-5	-2.6	-2.5	-2.5	-3.4	-2.4	-2.2	-2.1	-1.8	-1.6	-1.81	-0.84	-0.68	NA	-0.57	-0.59	-0.61	-0.69	-0.67	-0.71
CWII-6	-1.9	NA	NA	NA	NA	NA	-1.3	NA	NA	NA	NA	NA	NA	NA	NA	NA	NA	NA	NA
CWII-7	-1.5	-2.2	-2.2	0.0	-1.4	-1.5	-1.2	-1.0	-1.0	-1.11	0.00	-0.35	-0.02	-0.32	-0.32	-0.35	-0.45	-0.43	-0.46
CWII-8	0.0	-0.2	-0.2	0.0	-0.1	-0.1	0.0	0.0	0.0	-0.20	0.00	0.00	0.00	0.00	0.00	-0.02	-0.30	0.00	-0.03
CWII-9	-1.0	-1.0	-1.0	-0.1	-1.0	-1.0	-0.9	-0.6	-0.3	-0.20	-0.03	0.00	-0.02	-2.20	-0.04	-0.26	0.00	-0.29	-0.10
NW-1	-2.3	-2.6	-2.6	-2.7	-2.3	-3.4	-2.0	-2.0	-1.8	NA	-0.73	-0.23	-0.97	-0.59	-0.63	-0.63	-0.76	-0.50	-0.75
NW-2	-2.7	-2.8	-2.8	-2.3	-2.6	-2.6	-2.4	-2.1	-2.0	-0.60	-0.80	-0.42	-1.08	-0.64	-0.70	-0.53	-0.53	-0.85	-0.83
NW-3	-2.3	-2.2	-2.2	-2.7	-2.3	-2.2	-2.2	0.0	0.0	0.00	-0.72	-0.40	-1.01	-0.58	-0.62	-0.53	-0.76	-0.77	-0.72
NW-4	-2.1	-2.2	-2.2	-2.5	-2.2	-2.1	-2.0	0.0	-0.1	-0.12	-0.65	-0.50	-0.89	-0.54	-0.55	-0.54	-0.68	-0.66	-0.64
NW-5	-1.8	-2.1	-2.1	-2.0	-1.8	-1.8	-1.6	0.0	-0.1	-0.70	-0.56	-0.51	-0.74	-0.43	-0.45	-0.50	-0.55	-0.56	-0.52
NW-6	-1.8	-1.2	-1.2	-2.1	-1.8	-1.9	-1.7	-0.1	0.0	NA	-0.55	-0.39	-0.78	-0.41	-0.46	-0.51	-0.09	-0.59	-0.53
Ext-1	-0.1	-1.0	-1.0	-0.2	-1.6	-1.7	-0.1	0.0	0.0	-0.06	-0.05	0.00	0.02	0.00	-0.01	-0.02	-0.51	-0.02	0.00
Ext-2	-0.8	-0.8	-0.8	-1.0	-1.8	-0.9	-0.7	-0.1	0.0	-0.24	-0.20	-0.20	-0.38	-0.20	-0.21	-0.23	-0.50	-0.26	-0.23
Ext-3	-1.9	-1.2	-1.2	-2.1	-1.9	-0.1	-1.6	-0.1	-0.1	-0.56	-0.54	-0.49	-0.75	-0.44	-0.46	-0.49	-0.57	-0.58	-0.51
Ext-4	-1.9	-1.8	-1.8	-2.0	-0.8	-1.7	-1.4	-0.1	-0.1	-0.57	-0.52	-0.43	-0.74	-0.44	-0.45	-0.48	-0.57	-0.56	-0.47
Ext-5	-1.9	-0.8	-0.8	-1.6	0.0	-1.5	-1.4	-0.1	-0.1	-0.41	-0.46	-0.39	-0.64	-0.39	-0.40	-0.43	-0.50	-0.50	-0.12
N-1	-0.3	-0.3	-0.3	NA	-0.2	-0.2	-0.1	-0.1	NA	-0.72	-0.09	-0.60	NA	0.00	0.00	-0.03	-0.02	-0.05	-0.25
N-2	-0.6	-0.6	-0.6	-0.4	-0.4	-0.5	-0.7	-0.4	-0.5	-0.80	-0.07	-0.04	NA	0.00	-0.02	-0.03	-0.03	-0.05	-0.15
N-3	-0.2	-0.2	-0.2	-0.2	-0.2	-0.2	-0.2	0.0	0.0	-0.73	-0.06	-0.04	-0.08	-0.02	-0.03	-0.03	-0.03	-0.02	-0.04
N-4	-0.1	-0.2	-0.2	-0.1	-0.2	-0.3	-0.2	0.0	0.0	-0.64	-0.06	NA	-0.07	0.00	-0.02	-0.03	-0.02	-0.02	-0.04
N-5	-0.1	-0.2	-0.2	-0.1	-1.0	-0.1	-0.1	0.0	0.0	-0.55	-0.06	-0.05	-0.07	0.00	-0.02	-0.04	-0.02	-0.02	-0.05
N-6	-1.0	-1.2	-1.2	-0.1	-0.2	-1.0	-0.8	NA	NA	-0.53	NA	NA	NA	NA	NA	NA	NA	NA	-0.31
BS-1	-4.1	-3.9	-3.9	-0.3	-4.0	-5.0	-3.9	-4.0	-3.2	-1.21	-1.35	-1.21	-1.56	-1.00	-0.12	-1.12	-1.44	-1.43	-1.43

Measured in inches of H2O

NA - Not Available

*Note: Data reported prior to June 2021 was done by prior consultant*

**Table 5 (continued)**  
**Historical Landfill Gas Control Well Vacuum Data**  
**East Northport Landfill, East Northport, New York**  
for period of record between January, 2006 to Present

Well	10/10	11/10	1/12	2/12	3/12	4/12	5/12	6/12	7/12	8/12	9/12	10/12	11/12	12/12	1/13	2/13	3/13	4/13	5/13
CWI-4	-0.78	-0.80	-0.97	-0.81	-0.86	-0.86	-1.32	-1.29	-0.61	-0.97	-0.90	NA	-0.86	-0.91	-0.88	-0.66	-1.29	-0.86	-0.70
CWI-5	-0.55	-0.89	-1.12	-0.82	-0.72	-0.72	-1.44	-1.40	-0.66	-1.05	-0.98	NA	-0.98	-1.05	-0.99	-1.14	-1.49	-0.94	-0.78
CWI-6	-0.16	-0.91	-1.16	-0.81	-0.93	-0.93	-1.40	-1.39	-0.66	-1.07	-0.93	NA	-1.02	-1.07	-0.99	-1.19	-1.56	-0.95	-0.77
CWI-7	-0.85	-0.83	-1.10	-0.76	-1.02	-1.02	-1.06	-0.78	-0.62	NA	NA	NA	-0.55	-1.01	-0.84	-1.05	-1.29	-0.73	-0.68
CWII-1	-0.79	-0.77	-0.78	-0.61	-0.71	-0.71	-1.02	-1.09	-0.57	-0.88	-0.71	NA	-0.47	-0.40	-0.23	-1.04	-1.54	-0.32	-0.20
CWII-2	-0.72	-0.76	-1.05	-0.71	-0.91	-0.91	-1.10	-1.07	-0.57	-0.88	-0.91	NA	-0.91	-0.99	-0.86	-1.06	-1.40	-0.83	-0.68
CWII-3	-0.71	-0.76	-1.11	-0.72	-0.69	-0.69	-1.15	-1.18	-0.47	-0.91	-0.99	NA	-0.98	-1.07	-0.90	-1.15	-1.50	-0.86	-0.70
CWII-4	-0.74	-0.77	-1.09	-0.71	-0.94	-0.94	-1.10	-1.06	-0.56	-0.89	-0.95	NA	-0.95	-1.04	-0.88	-1.13	-1.46	-0.85	-0.68
CWII-5	-0.72	-0.77	-1.11	-0.70	-0.89	-0.89	-1.11	-1.07	-0.56	-0.90	-0.98	NA	-0.97	-1.06	-0.89	0.00	-1.51	-0.86	-0.88
CWII-6	-0.73	NA	-0.02	N/A	N/A	N/A	NA	NA	NA	NA	NA	NA	NA	NA	NA	NA	NA	NA	NA
CWII-7	-0.40	-0.44	-0.03	0.00	0.00	0.00	-0.53	-0.50	-0.34	-0.55	-0.03	NA	0.00	-0.03	-0.46	0.00	0.00	0.00	-0.31
CWII-8	-0.02	-0.02	0.00	0.00	-0.09	-0.09	0.00	0.02	0.00	0.00	-0.02	NA	0.00	-0.04	0.00	0.00	0.00	0.00	0.00
CWII-9	-0.29	-0.30	-0.02	0.00	0.00	0.00	-0.35	-0.32	-0.23	-0.36	-0.03	NA	0.00	-0.04	-0.29	0.00	0.00	0.00	-0.22
NW-1	-0.80	-0.79	-0.98	-0.74	-0.76	-0.76	-1.30	-1.30	-0.62	-0.97	-0.85	NA	-0.84	-0.92	-0.90	-0.98	-1.25	-0.87	-0.68
NW-2	-0.88	-0.89	-1.06	-0.81	-0.72	-0.72	-1.52	-1.51	-0.69	-1.11	-0.96	NA	-0.96	-0.99	-1.00	-1.10	-1.40	-0.95	-0.75
NW-3	-0.78	-0.76	-0.93	-0.73	-0.70	-0.70	-1.31	-1.47	-0.61	-0.96	-0.16	NA	-0.84	-0.60	-0.87	-1.11	-1.25	-0.85	-0.69
NW-4	-0.20	-0.69	-0.85	-0.66	-0.61	-0.61	-1.18	-1.18	-0.58	-0.85	-0.83	NA	-0.74	-0.82	-0.82	-1.09	-1.15	-0.78	-0.68
NW-5	-0.55	-0.59	-0.69	-0.54	-0.49	-0.49	-0.91	-0.92	-0.46	-0.69	-0.64	NA	-0.62	-0.68	-0.66	-0.75	-0.89	-0.64	-0.52
NW-6	-0.57	-0.51	-0.73	-0.56	-0.62	-0.62	-0.99	-1.03	-0.54	-0.72	-0.67	NA	-0.63	-0.67	-0.66	-0.04	-0.97	-0.81	-0.55
Ext-1	-0.21	-0.03	0.00	0.00	-0.28	-0.28	-0.61	-0.02	-0.11	-0.61	-0.06	NA	-0.02	-0.09	-0.82	-0.02	-0.04	-0.04	-0.46
Ext-2	0.00	-0.26	-0.28	-0.57	-0.41	-0.41	-0.55	-0.39	-0.22	-0.72	-0.28	NA	-0.26	-0.35	-0.36	-0.29	-0.39	-0.29	-0.53
Ext-3	-0.52	-0.59	-0.76	-0.56	-0.51	-0.51	-0.58	-1.00	-0.49	-0.75	-0.67	NA	-0.64	-0.71	-0.70	-0.80	-1.02	-0.69	-0.20
Ext-4	-0.18	-0.60	-0.74	-0.53	-0.44	-0.44	-0.60	-0.99	-0.49	-0.30	-0.70	NA	-0.62	-0.69	-0.68	-0.24	-0.99	-0.67	-0.40
Ext-5	-0.40	-0.45	-0.61	-0.32	-0.30	-0.30	-0.42	-0.84	-0.44	-0.04	-0.50	NA	-0.56	-0.23	-0.59	-0.34	-0.87	-0.58	-0.32
N-1	-0.33	-0.08	-0.03	0.00	-0.02	-0.02	-0.03	0.20	NA	NA	NA	NA	NA	NA	NA	NA	NA	NA	NA
N-2	-0.15	-0.04	-0.04	N/A	-0.04	-0.04	-0.04	0.00	-0.02	-0.04	-0.09	NA	0.00	-0.07	-0.03	-0.03	-0.03	0.00	-0.04
N-3	-0.02	-0.04	-0.03	0.00	-0.06	-0.06	-0.03	0.00	-0.03	-0.03	-0.06	NA	0.00	-0.05	-0.02	0.00	-0.03	0.00	-0.04
N-4	-0.02	0.00	-0.04	0.00	-0.01	-0.01	0.00	0.00	0.00	-0.04	-0.05	NA	0.00	0.00	0.00	NA	0.00	0.00	-0.03
N-5	-0.02	-0.03	-0.04	0.00	-0.03	-0.03	-0.03	0.00	-0.02	-0.03	-0.05	NA	0.00	NA	-0.03	0.00	-0.03	0.00	-0.03
N-6	-0.29	-0.31	0.00	0.00	-0.26	-0.26	-0.34	-0.32	-0.24	-0.35	-0.04	NA	NA	-0.06	-0.29	0.00	0.00	0.00	-0.22
BS-1	-1.46	-1.55	-1.74	-1.30	-1.13	-1.13	-3.01	-3.11	-1.19	-2.01	-1.59	NA	-1.75	-1.64	-1.71	-1.75	-2.25	-1.52	-1.18

Measured in inches of H2O

NA - Not Available

*Note: Data reported prior to June 2021 was done by prior consultant*

**Table 5 (continued)**  
**Historical Landfill Gas Control Well Vacuum Data**  
**East Northport Landfill, East Northport, New York**  
for period of record between January, 2006 to Present

Well	6/13	7/13	8/13	9/13	10/13	11/13	12/13	1/14	2/14	3/14	4/14	5/14	6/14	7/14	8/14	9/14	10/14	12/14	3/15
CWI-4	-0.80	-0.82	-1.35	-1.33	-1.39	-1.39	-1.59	-1.64	-1.11	-1.98	-1.13	-0.95	-1.06	-0.62	-0.61	-0.64	-0.92	-1.42	-1.63
CWI-5	-0.88	-1.02	-1.52	-1.54	-1.55	-1.60	-1.91	-1.90	-1.30	-1.72	-1.28	-1.28	-1.19	-0.69	-0.69	-0.70	-1.05	-1.66	-1.97
CWI-6	-0.87	-0.84	-1.50	-1.48	-1.54	-1.59	-2.00	-1.99	-1.36	-1.87	-1.25	-1.02	-1.21	-0.69	-0.76	-0.70	-1.12	-1.76	-2.05
CWI-7	-0.84	-0.79	-1.35	-1.34	-0.84	-0.45	-1.79	-1.81	-1.28	-1.74	-1.14	-1.14	-1.07	-0.63	-0.48	-0.64	N/A	-1.67	-0.05
CWII-1	-0.79	-0.75	-1.36	-1.32	-1.28	-1.41	-1.86	-1.79	-1.33	-1.69	-1.15	-1.16	-1.04	-0.62	-0.63	-0.64	-1.02	-1.67	-2.00
CWII-2	-0.78	-0.73	-1.26	-1.22	-1.22	-1.27	-1.72	-1.70	-1.24	-1.63	-1.09	-1.18	-1.02	-0.60	-0.61	-0.62	-0.97	-1.55	-1.80
CWII-3	-0.80	-0.75	-1.44	-1.29	-1.37	-1.51	-1.88	-1.87	-1.34	-1.55	-1.15	-0.77	-1.05	-0.58	-1.38	-0.64	-0.87	-1.69	-2.01
CWII-4	NA	-0.75	-1.36	-1.21	-1.29	-1.29	-1.85	-1.85	0.00	-0.01	-1.13	-1.15	-1.02	-0.60	-0.55	-0.62	-1.04	-1.66	-0.42
CWII-5	-0.03	-0.73	-1.27	-1.32	-1.29	-1.33	-1.54	-1.89	0.00	0.00	-1.13	-1.27	-1.09	-0.66	-0.62	-0.63	-1.05	-1.70	0.00
CWII-6	NA	NA	NA	-0.71	-0.72	-0.51	N/A	N/A	N/A	N/A	N/A	N/A	N/A	N/A	N/A	N/A	N/A	N/A	0.00
CWII-7	-0.39	-0.45	-0.52	-0.46	-0.54	-0.35	-0.04	0.00	0.00	-0.01	-0.48	-0.30	-0.40	-0.36	-0.39	-0.39	-0.08	-0.05	0.00
CWII-8	0.00	0.00	0.00	0.00	-0.02	0.00	-0.03	0.00	0.00	0.00	0.00	-0.02	0.00	-0.02	-0.02	-0.04	0.00	-0.02	0.00
CWII-9	-0.28	-0.30	-0.32	-0.29	-0.34	-0.29	-0.02	-0.04	0.00	0.00	-0.31	-0.31	0.28	-0.25	-0.28	-0.28	-0.16	-0.04	0.00
NW-1	-0.80	-0.77	-1.36	-1.37	-1.40	-1.56	-1.80	-1.59	-1.18	-1.11	-1.30	-1.29	-1.18	-0.61	-0.68	-0.64	-0.93	-1.46	-1.66
NW-2	-0.89	-0.22	-1.48	-1.22	-1.55	-1.61	-1.84	-1.85	-1.27	-1.42	-1.32	-1.35	-1.27	-0.70	-0.69	-0.64	-1.03	-1.61	-1.60
NW-3	-0.82	-0.54	-1.39	-1.39	-1.44	-1.44	-1.58	-1.73	-1.07	-1.09	-1.14	-1.20	-1.13	-0.62	-0.62	-0.64	-0.93	-1.44	-1.68
NW-4	-0.74	-0.56	-1.25	-1.33	-1.25	-1.27	-1.40	-1.37	-0.95	-1.02	-1.05	-1.11	-1.04	-0.58	-0.57	-0.59	-0.83	-1.26	-1.46
NW-5	-0.74	-0.61	-0.95	-1.22	-1.01	-0.99	-1.10	-1.07	-0.80	-0.98	-0.82	-0.86	-0.82	-0.48	-0.47	-0.50	-0.66	-1.00	-1.07
NW-6	-0.82	-0.59	-1.04	-1.19	-1.08	-1.05	-1.19	-1.19	-0.85	-0.99	-0.85	-0.95	-0.88	-0.50	-0.50	-0.51	-0.58	-1.07	-1.16
Ext-1	0.00	-0.50	-0.98	-1.00	-0.05	-0.21	-0.06	-0.98	-0.04	-0.07	-0.34	-0.05	-0.02	-0.02	-0.03	-0.04	-0.58	-0.11	-0.62
Ext-2	-0.62	-0.42	-0.42	-0.98	-0.40	-0.66	-0.46	-0.95	-0.41	-0.57	-0.37	-0.39	0.37	-0.24	-0.22	-0.23	-0.68	-0.47	-0.79
Ext-3	-0.66	-0.49	-1.06	-0.98	-1.09	-1.09	-1.26	-0.77	-1.01	-1.72	-0.94	-0.97	0.76	-0.52	-0.53	-0.54	-0.67	-1.11	-0.54
Ext-4	-0.64	-0.59	-1.02	-0.96	-1.29	-0.53	-1.22	-1.20	-1.19	-1.28	-0.91	-0.93	0.89	-0.50	-0.55	-0.51	-0.28	-1.07	-0.32
Ext-5	-0.58	-0.44	-0.88	-1.02	-0.92	-0.88	-1.03	-0.98	-0.87	-0.92	-0.24	-0.80	-0.78	-0.44	-0.32	-0.45	-0.03	-0.71	-0.05
N-1	NA	NA	NA	-0.02	-0.04	-0.03	N/A	N/A	N/A	N/A	N/A	N/A	N/A	N/A	N/A	N/A	N/A	N/A	0.00
N-2	-0.06	-0.04	-0.03	-0.02	-0.04	-0.02	-0.09	-0.05	-0.02	0.00	0.00	-0.06	-0.02	-0.05	-0.04	-0.08	-0.04	-0.02	-0.02
N-3	-0.02	-0.03	-0.02	0.00	0.00	-0.02	-0.05	-0.03	0.00	0.00	0.00	-0.04	0.00	-0.02	-0.02	-0.04	-0.02	-0.02	0.00
N-4	-0.04	-0.02	0.00	0.00	0.00	0.00	0.00	-0.02	N/A	0.00	0.00	0.00	0.00	-0.02	-0.03	-0.04	-0.02	-0.01	0.00
N-5	-0.27	-0.03	0.00	0.00	-0.02	-0.02	-0.05	-0.03	0.00	-0.04	0.00	-0.03	0.00	-0.02	-0.03	-0.04	-0.04	-0.02	0.00
N-6	-0.02	-0.29	-0.31	-0.30	-0.33	-0.29	-0.03	0.00	N/A	-0.02	-0.31	-0.33	0.27	-0.26	-0.29	-0.28	-0.01	-0.02	0.02
BS-1	-1.42	-1.46	-2.86	-2.87	-2.98	-2.96	-3.31	-3.40	-1.96	-2.43	-2.35	-2.35	-2.06	-1.14	-2.27	-1.17	-1.85	-2.69	-3.18

Measured in inches of H2O

NA - Not Available

*Note: Data reported prior to June 2021 was done by prior consultant*

**Table 5 (continued)**  
**Historical Landfill Gas Control Well Vacuum Data**  
**East Northport Landfill, East Northport, New York**  
for period of record between January, 2006 to Present

Well	6/15	9/15	12/15	3/16	6/16	9/16	12/16	3/17	6/17	9/17	12/17	3/18	6/18	9/18	12/18	3/19	6/19	9/19	12/19
CWI-4	-1.50	-2.00	-1.48	-1.54	-1.44	-1.22	-1.31	-1.46	-1.39	-1.21	-1.45	-1.58	-1.44	-1.38	0.00	0.00	-1.36	-1.25	-1.50
CWI-5	-1.55	-1.70	-1.98	-1.98	-1.53	-1.42	-1.66	-1.67	-1.63	-1.43	-1.64	-1.73	-1.54	-1.66	0.00	0.00	-1.60	-1.42	-1.83
CWI-6	-1.67	-1.50	NA	-1.91	-1.58	-1.48	-1.67	-1.76	-1.73	-1.38	-1.80	-2.03	-1.56	-1.72	0.00	0.00	-1.65	-1.39	-1.90
CWI-7	-1.78	-0.72	-0.43	-0.70	-1.42	-1.27	-1.41	-1.51	-1.76	-0.20	-1.72	-2.05	-1.51	-1.04	0.15	0.36	-1.11	-1.20	-1.75
CWII-1	-1.65	-1.08	-1.70	-1.68	-1.50	-1.11	-1.18	-1.62	-1.56	-1.19	-1.70	-1.89	-1.44	-1.52	0.00	0.00	-1.46	-1.15	-1.72
CWII-2	-1.50	-1.42	-1.39	-1.47	-1.09	-1.14	-1.32	-1.92	-1.39	-1.10	-1.40	-1.95	-1.39	-1.38	0.00	0.00	-1.11	-0.91	-1.35
CWII-3	-1.80	-1.47	-1.20	-1.62	-1.55	-1.22	-0.76	-1.65	-1.60	-1.11	-1.69	-1.91	-1.47	-1.50	0.00	0.00	-1.44	-1.09	-1.74
CWII-4	-1.55	-1.30	-1.64	-1.73	-1.46	-1.20	-1.31	-1.59	-1.50	-1.05	-1.57	-1.92	-1.32	-1.05	0.00	0.00	-1.48	-1.06	-1.57
CWII-5	-1.56	-1.29	-1.17	-1.79	-1.54	-1.37	-1.63	-1.68	-1.48	-1.24	-1.72	-1.95	-1.41	-1.63	0.00	0.00	-1.47	-0.89	-1.76
CWII-6	NA	-0.75	0.00	0.00	-0.41	-0.02	-0.04	0.02	-0.11	NA	NA	NA	NA	NA	NA	NA	NA	-1.04	NA
CWII-7	-0.04	-0.50	0.00	0.00	NA	-0.04	-0.01	0.01	-1.50	-0.36	-0.03	0.00	0.00	NA	NA	0.00	-1.48	NA	NA
CWII-8	0.00	-0.07	0.00	0.00	0.00	0.00	0.00	0.00	0.00	0.00	-0.01	0.00	0.00	-1.35	0.00	-0.02	0.00	-0.03	0.02
CWII-9	-0.05	-0.44	0.00	0.00	-0.16	-0.05	-0.03	0.00	-0.06	-0.23	-0.02	-0.01	-1.50	0.00	0.00	-0.02	-0.18	-0.36	0.00
NW-1	-1.44	-1.77	-1.74	-1.59	-1.33	-1.51	-1.68	-1.68	-1.48	-1.34	-1.60	-1.68	-1.47	-1.50	0.00	0.00	-1.59	-1.52	-1.79
NW-2	-1.69	-1.62	-1.71	-1.85	-1.53	-1.48	-1.41	-1.49	-1.66	-1.43	-1.75	-1.92	-1.72	-1.39	0.00	0.00	-1.69	-1.55	-1.85
NW-3	-1.47	-1.40	-1.43	-1.63	-1.35	-1.25	-1.35	-1.03	-1.43	-1.28	-1.45	-1.56	-1.40	-1.43	0.00	0.00	-1.43	-1.34	-1.60
NW-4	-1.27	-1.20	-1.33	-1.45	-1.27	-1.20	1.10	-1.15	-1.35	-1.14	-1.34	-1.49	-1.34	-1.86	0.00	0.00	-1.31	-1.22	-1.40
NW-5	-1.15	-1.00	-1.02	-1.10	-0.95	-1.11	-1.11	-1.20	-1.30	-0.87	-1.40	-1.20	-1.02	-1.00	0.00	0.00	-1.01	-0.95	-1.08
NW-6	-1.10	-1.10	-1.11	-1.18	-1.01	-1.10	-1.07	-1.10	-1.45	-0.90	-1.14	-1.17	-1.16	-1.07	0.00	0.00	-1.00	-0.99	-1.13
Ext-1	-0.94	-0.06	-0.32	-0.06	-0.06	-1.08	-1.13	-0.42	-1.38	NA	-1.10	-0.52	-0.23	-1.00	-0.02	0.00	-1.34	-0.06	-0.04
Ext-2	-1.07	-0.44	-0.41	-0.48	-0.42	-0.98	-0.92	-0.51	-1.29	NA	-1.17	-0.48	-0.37	-0.51	0.00	0.00	-1.47	-0.40	-0.50
Ext-3	-1.13	-1.10	-1.18	-1.22	-1.04	-0.87	-0.81	-1.01	-1.25	NA	-1.09	-0.85	-0.62	-0.88	0.00	0.00	-1.30	-1.00	-1.22
Ext-4	-1.08	-1.27	-1.87	-1.16	-1.01	-0.80	-0.90	-1.02	-1.31	-0.89	-1.21	-0.88	-0.56	-0.91	0.00	0.00	-1.10	-0.97	-1.13
Ext-5	-0.94	-0.92	-0.88	-0.96	-0.85	-0.91	-0.91	-0.88	-0.92	-0.72	-1.08	-0.90	-0.86	-0.06	0.00	0.00	-0.09	-0.80	-0.95
N-1	NA	-0.04	-0.07	-0.02	-0.05	-0.03	NA	NA	NA	NA	-0.05	NA	NA	0.00	0.00	0.00	NA	-1.02	0.00
N-2	-0.02	-0.01	-0.05	-0.04	-0.04	-0.03	0.00	-0.04	0.00	0.00	-0.06	-0.04	-0.20	NA	0.00	-0.03	-1.42	-1.07	-0.02
N-3	0.00	0.00	-0.03	-0.03	-0.03	-0.03	NA	-0.02	0.00	0.00	-0.04	-0.03	-0.40	-0.02	0.00	-0.02	-1.23	-1.05	-0.02
N-4	0.00	0.00	0.00	-0.02	-0.02	-0.02	0.00	0.00	0.00	0.00	-0.03	-0.03	-0.30	-0.01	0.00	-0.02	-1.57	-0.99	0.00
N-5	0.00	0.00	-0.03	-0.03	-0.03	-0.03	0.00	-0.02	0.00	0.00	-0.04	-0.02	-0.30	-0.09	0.00	0.00	-1.34	-1.01	-0.02
N-6	0.00	-0.41	0.00	0.00	-0.16	-0.07	0.00	0.00	-0.06	0.00	-0.02	0.00	0.00	-0.05	0.00	-0.03	-1.40	-0.98	0.00
BS-1	-3.11	-3.05	-3.07	-3.20	-2.85	-2.61	-2.99	-3.02	-2.95	-2.64	-3.05	-2.15	-2.56	-1.31	0.00	0.00	-3.60	-3.52	-3.10

Measured in inches of H2O

NA - Not Available

*Note: Data reported prior to June 2021 was done by prior consultant*

**Table 5 (continued)**  
**Historical Landfill Gas Control Well Vacuum Data**  
**East Northport Landfill, East Northport, New York**  
for period of record between January, 2006 to Present

Well	3/20	6/20	9/20	12/20	1/21	6/21	9/21	11/21	2/22									
CWI-4	-1.50	-1.61	-1.52	-1.50	-1.70	-5.06	-5.36	-5.99	-6.16									
CWI-5	-1.80	-1.70	-1.60	-1.55	-1.78	-5.12	-6.22	-6.59	-7.19									
CWI-6	-1.80	-1.62	-1.57	-1.61	-1.76	-5.85	-6.32	-6.83	-7.42									
CWI-7	-1.72	-1.47	-1.41	-1.48	-1.32	-5.55	-5.95	-6.45	-7.02									
CWII-1	-1.70	-1.40	-1.32	-1.30	-1.40	-4.90	-5.59	-6.04	-6.51									
CWII-2	-1.27	-1.14	-1.20	-1.32	-1.47	-4.32	-4.90	-5.18	-5.52									
CWII-3	-1.69	-1.41	-1.29	-1.41	-1.53	-5.05	-0.01	-6.29	-6.92									
CWII-4	-1.59	-1.47	-1.41	-1.52	-1.19	-5.34	-5.97	-6.18	-6.80									
CWII-5	-1.59	-1.46	-1.39	-1.60	-1.49	-5.50	-0.01	-6.44	-7.00									
CWII-6	NA	NA	NA	NA	NA	NA	-0.75	-0.18	0.00									
CWII-7	-0.03	-0.01	-0.11	-0.20	-0.12	-1.12	-0.02	-0.23	-0.07									
CWII-8	-0.03	-0.02	-0.14	-0.18	-0.11	0.00	-0.01	-0.10	-0.04									
CWII-9	0.00	-0.12	-0.33	-0.22	-0.13	-0.67	-0.01	-0.26	-0.07									
NW-1	-1.55	-1.65	-1.52	-1.41	-1.79	-6.20	-6.24	-6.83	-6.98									
NW-2	-1.53	-1.71	-1.51	-1.49	-1.51	-6.36	-6.37	-7.02	-7.14									
NW-3	-1.51	-1.62	-1.33	-1.50	-1.72	-5.41	-5.62	-5.86	-6.04									
NW-4	-1.47	-1.35	-1.29	-1.10	-1.34	-4.96	-4.99	-5.37	-5.21									
NW-5	-1.04	-1.15	-0.95	-1.00	-1.67	-3.74	-3.85	-4.18	-4.20									
NW-6	-1.08	-1.09	-0.99	-1.12	-1.21	-3.88	-4.07	-4.30	-4.33									
Ext-1	-0.08	-0.09	-0.80	-0.61	-0.84	-0.21	-0.10	-0.17	-0.10									
Ext-2	-0.48	-0.43	-0.29	-0.71	-0.71	-1.66	-1.73	-1.71	-1.85									
Ext-3	-0.64	-0.98	-0.79	-1.10	-1.19	-4.20	-4.24	-4.38	-4.59									
Ext-4	-1.40	-1.26	-1.14	-1.12	-1.31	-3.82	-3.88	-3.95	-4.06									
Ext-5	-0.88	-0.88	-0.79	-1.21	-1.61	-3.24	-3.47	-3.65	-3.40									
N-1	0.00	0.00	0.00	0.00	-1.01	0.00	0.00	-0.03	NA									
N-2	-0.10	-0.02	-0.30	-0.01	-0.01	-0.05	-0.20	-0.17	-0.03									
N-3	-0.10	-0.02	-0.05	-0.09	-0.05	-0.12	-0.18	-0.09	-0.04									
N-4	0.00	0.00	-0.10	0.00	-0.01	-0.14	-0.19	-0.32	-0.05									
N-5	-0.10	NA	-0.90	-0.82	-0.11	-0.09	-0.22	-0.16	-0.17									
N-6	0.00	-0.11	-0.17	-0.10	-0.19	-0.67	-0.10	-0.27	-0.09									
BS-1	-3.10	-3.13	-2.83	-2.90	-4.72	-13.70	-11.21	-4.60	-12.33									

Measured in inches of H<sub>2</sub>O

NA - Not Available

*Note: Data reported prior to June 2021 was done by prior consultant*

J:\\_HazWaste\5629 (East Northport Landfill)\Monitoring Reports\Landfill Gas Monitoring\2021Q4\Appendicies