

TOWN OF HUNTINGTON - EAST NORTHPORT LANDFILL
99 TOWNLINE ROAD, EAST NORTHPORT, NEW YORK
LANDFILL GAS MONITORING REPORT - FIRST QUARTER 2022

**LANDFILL GAS MONITORING REPORT
FIRST QUARTER 2022
FOR
TOWN OF HUNTINGTON
EAST NORTHPORT LANDFILL AT
TOWNLINE ROAD, EAST NORTHPORT, NEW YORK**

Prepared for:

**TOWN OF HUNTINGTON
DEPARTMENT OF ENVIRONMENTAL WASTE MANAGEMENT
100 MAIN STREET
HUNTINGTON, NEW YORK**

Prepared by:

**D&B ENGINEERS AND ARCHITECTS
WOODBURY, NEW YORK**

MAY 2022

**LANDFILL GAS MONITORING REPORT - FIRST QUARTER 2022
TOWN OF HUNTINGTON
EAST NORTHPORT LANDFILL**

TABLE OF CONTENTS

<u>Section</u>	<u>Title</u>	<u>Page</u>
1.0	INTRODUCTION.....	1-1
1.1	Project Objective.....	1-1
1.2	Site Description.....	1-1
1.3	Scope of Work	1-5
1.4	Equipment and Methodology.....	1-6
2.0	PROJECT SUMMARY.....	2-1
2.1	Overview of Results.....	2-1
	2.1.1 Landfill Gas Monitoring Wells.....	2-1
	2.1.2 Landfill Gas Control Wells.....	2-1
	2.1.3 Condensate Drains	2-2
2.2	Historical Methane Detections.....	2-2
3.0	CONCLUSIONS AND RECOMMENDATIONS.....	3-1
3.1	Conclusions.....	3-1
3.2	Recommendations.....	3-2

List of Figures

1-1	Site Location Map.....	1-2
1-2	Site Plan	1-4

List of Appendices

Table 1 – Results of Landfill Gas Monitoring Wells.....	A
Table 2 – Results of Landfill Gas Control Wells	B
Table 3 – Condensate Drain Evaluation	C
Table 4 – Historical Landfill Gas Control Well Methane Data	D
Table 5 – Historical Landfill Gas Control Well Methane Data	E

1.0 INTRODUCTION

Presented herein are the results of the First Quarter 2022 Landfill Gas (LFG) monitoring activities performed at the Town of Huntington (TOH) East Northport Landfill, as stipulated by the New York State Department of Environmental Conservation (NYSDEC). The work described in this report was completed in accordance with the provisions of the contractual agreement between the Town of Huntington (TOH) and D&B Engineers and Architects (D&B), dated June 2, 2021, for LFG Monitoring and Related Engineering Services as described in the TOH Request for Proposal (RFP) No. 2021-02-003 and Post Closure Operation & Maintenance (O&M) Plan for the East Northport Landfill, located at 99 Towline Road, East Northport, NY. The O&M work plan was developed by Cashin Associates, P.C. in November 1996, in conformance with the NYSDEC Record of Decision (ROD) mandated monitoring program.

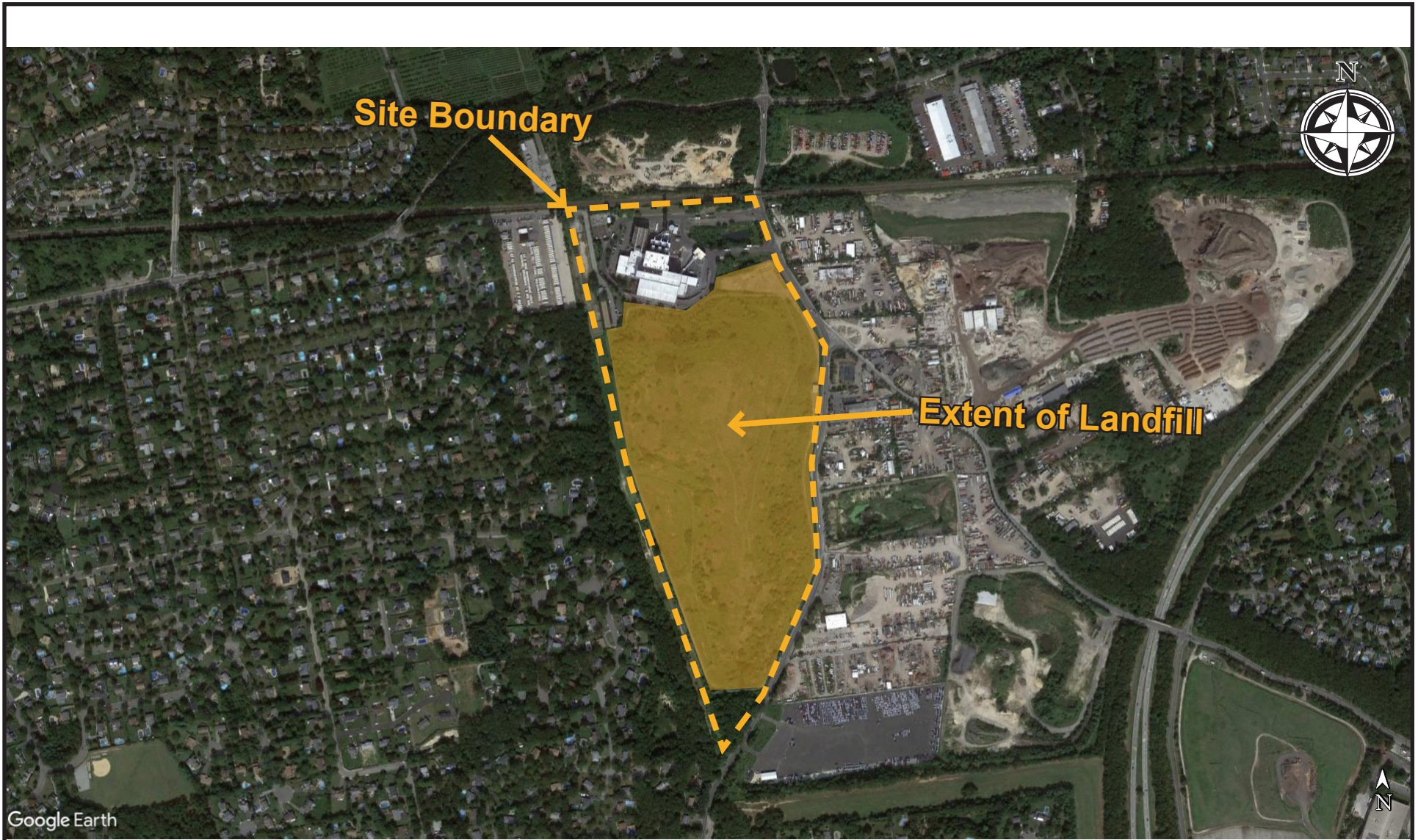
The TOH is required by the NYSDEC ROD (which was modified by the NYSDEC on August 13, 2014) to provide monitoring reports on LFG at the TOH Landfill located on Townline Road in East Northport, NY 11731. The modified ROD reduced the frequency of monitoring periods to quarterly, with the exception of the blower station sampling and analysis which remains an annual requirement.

1.1 Project Objective

The objectives of the Quarterly Landfill Gas Monitoring Reports for the East Northport Landfill are to provide current methane gas production data, and to provide an assessment of the current condition and efficacy of the LFG migration control system installed at the site.

1.2 Site Description

The Site is located at 99 Townline Road, East Northport, New York, 11731 within the Town of Huntington, New York. A Site Location Map is provided as **Figure 1-1**.



TOWN OF HUNTINGTON - EAST NORTHPORT LANDFILL
99 TOWN LINE ROAD
EAST NORTHPORT, NY 11731



SITE LOCATION MAP

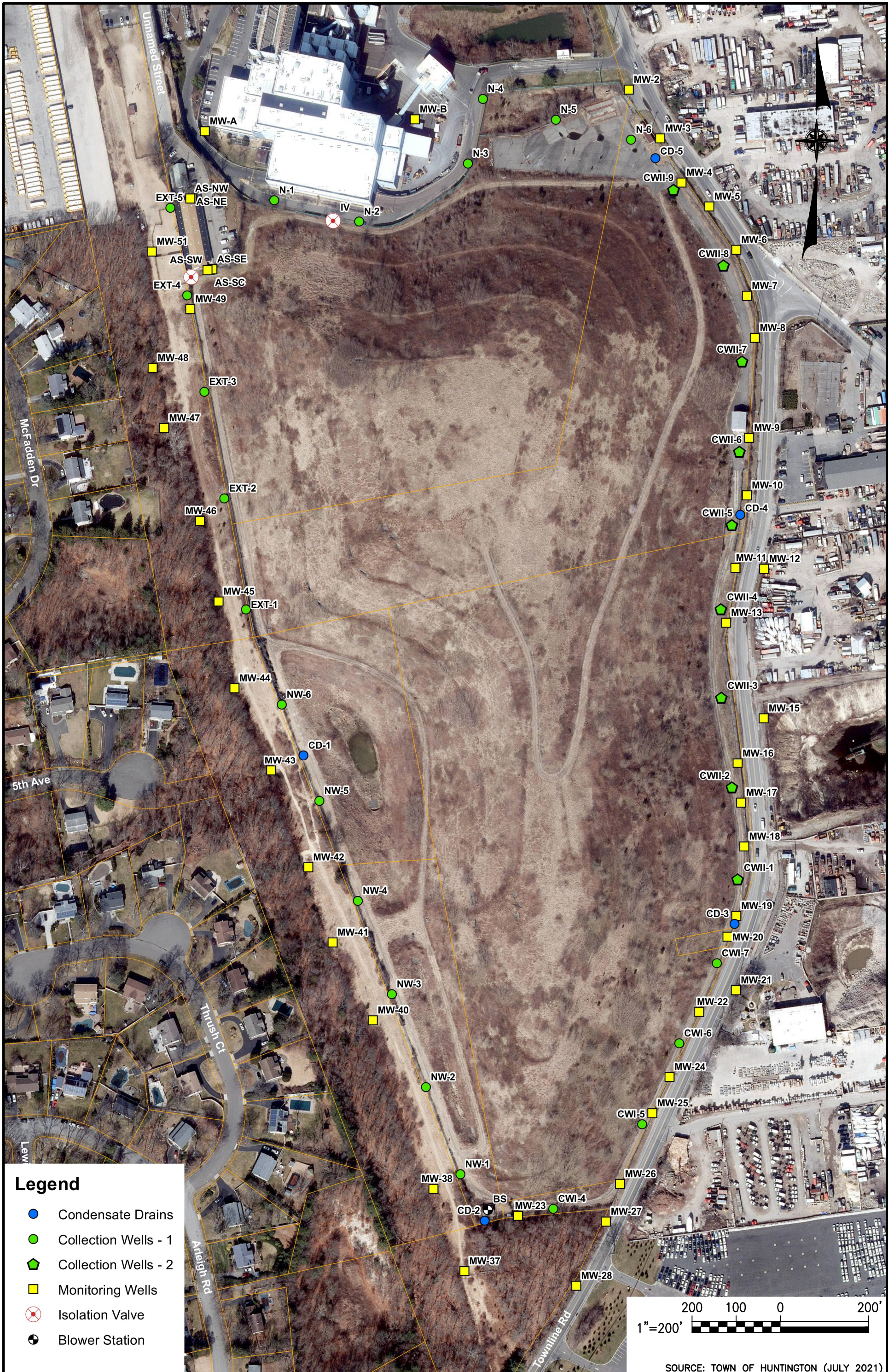
Figure 1-1

The TOH East Northport Landfill comprises forty-four (44) acres and is located on the west side of Townline Road, approximately ¼ mile south of Pulaski Road, in East Northport, New York. The site is bounded by Townline Road to the East and South which is followed by commercial or industrial use land. The Covanta of Huntington facility adjoins the site to the north followed by the Long Island Railroad which bounds the Site to the North and is followed by commercial use land. To the West, the Site is bounded by a utility right-of-way owned by PSEG of Long Island and is followed by residential and commercial use land.

The Landfill is a designated Class 4 Inactive Hazardous Waste Site by NYSDEC and has been capped since August 1996, at which time the LFG control and monitoring systems were upgraded and expanded.

A Site Plan including all monitoring wells, control wells, condensate drains, control system isolation valves, and blower station is provided as **Figure 1-2**. The primary landfill gas migration control system consists of thirty (30) active LFG control wells that are connected to one blower station through a single header pipe that forms a complete loop around the perimeter of the Landfill. Each individual control well is screened at a depth of approximately 30 feet below grade and is located in a pre-cast concrete vault with a manhole approximately at, or a few feet above grade. Each control well has a valve to regulate the draw from the well or isolate the well from the system, and a labcock to take vacuum or LFG readings. There are five (5) condensate drains located throughout the LFG collection system.

There are forty-one (41) monitoring well clusters around the perimeter of the landfill, both on and off site. The forty-one (41) well clusters each have between two (2) and four (4) probes screened at discrete depths between five (5) and seventy (70) feet below grade. Each probe is fitted with at least one labcock for monitoring purposes. The monitoring well clusters provide a means to confirm the LFG control system is effectively extracting the methane generated on-site and preventing any detectable levels of methane in soil vapor from migrating off-site.



Legend

- Condensate Drains
- Collection Wells - 1
- ◩ Collection Wells - 2
- Monitoring Wells
- ⊗ Isolation Valve
- ⊗ Blower Station

SOURCE: TOWN OF HUNTINGTON (JULY 2021)

TOWN OF HUNTINGTON - EAST NORTHPORT LANDFILL
 99 TOWN LINE ROAD
 EAST NORTHPORT, NY 11731
SITE PLAN

The Town maintains an Animal Control Facility adjacent to the Landfill that contains a separate LFG control and monitoring system. This system consists of a sand layer beneath the concrete slab which the facility sits on that is connected by the ducts to wind driven exhaust fans on the roof. There are also five (5) probes in this sand layer that are connected to five monitoring labcocks located around the exterior of the building. Monitoring of these five (5) sampling locations is included in the modified ROD mandated monitoring program conducted at the same frequency as all other wells.

1.3 Scope of Work

The scope-of-work includes the performance of the following on a quarterly basis:

- Monitor the forty-one (41) LFG monitoring well clusters installed around the perimeter of the landfill, both on-site and off-site for relative pressure and percent composition of methane, oxygen, and carbon dioxide.
- Monitor the thirty (30) active LFG control wells installed around the perimeter of the Landfill, as well as the landfill gas control system blower station to determine if the system is operating properly. Each LFG control well and the three (3) blower station monitoring points are monitored for temperature, flow rate, relative pressure, and percent composition of methane, oxygen, and carbon dioxide. The balance of the LFG control system will be checked and adjustments to the balance of the LFG control system will be made as necessary.
- Monitor the five (5) LFG monitoring probes installed around the exterior of the Town Animal Control Facility for relative pressure and percent composition of methane, oxygen, and carbon dioxide.
- Inspect the five (5) condensate drains installed at various locations throughout the LFG control system for proper operation and water accumulation.
- Identify any problems, damage, missing parts, etc. at each monitoring well cluster, LFG control well, LFG control system Blower Station, Town Animal Control Facility probes and condensate drains during each monitoring event. D&B will inspect well identifications during each monitoring phases and, if necessary, re-label each well accordingly.
- Collect one LFG grab sample for Method TO-15 on a yearly basis. The sample will be taken from the intake line of the blower station and collected with a 6-Liter Summa canister.

1.4 Equipment and Methodology

The following equipment and methodology were used to complete the LFG monitoring activities:

LFG was monitored for percent (%) composition of methane (CH₄), oxygen (O₂), and carbon dioxide (CO₂), with the Landtec GEM 5000 Gas Analyzer. Additionally, the GEM 5000 was used to monitor relative pressure at each monitoring point which is recorded in inches of water. The gas analyzer was calibrated per the manufacturer's recommendations prior to monitoring. The LFG monitoring and control wells are monitored through a series of labcocks with ball valves which are screwed directly into each well, creating an air-tight seal. The GEM 5000 is attached directly to the labcock with tubing and utilizes an air pump to analyze the composition of the gas within the well.

The LFG control wells and blower station monitoring points were confirmed to have consistent air flow; however, due to equipment malfunction the flow rate and temperature readings were not collected from control wells or blower stations.

2.0 PROJECT SUMMARY

This section of the report presents a summary of the monitoring results for the East Northport Landfill. The field activities were completed in accordance with the Town of Huntington RFP and the O&M Work Plan for the Site.

2.1 Overview of Results

The LFG monitoring was completed on February 16 and 17, 2022. The climatic conditions recorded during the monitoring event were approximately 40-55 °F, barometric pressure was measured between 30.14 and 30.63 (in. Hg), conditions were partly cloudy with 10-15 mph winds. Daily climatic conditions are additionally included in **Appendices A, B, and C**.

2.1.1 Landfill Gas Monitoring Wells

A summary of the measured and recorded LFG monitoring well data is presented in **Table 1 (refer to Appendix A)**. As shown on **Table 1**, methane was not detected throughout the entire monitoring well network, including off-site wells.

2.1.2 Landfill Gas Control Wells

Table 2 (refer to Appendix B) presents a summary of measured and recorded LFG control well data; including the system's blower station where three monitoring locations, labeled Blower Stations (BS) #1, #2, and #3 are located. As shown on **Table 2**, the relative pressure readings at the control well monitoring points are indicative of the efficacy of the LFG extraction system and measures the vacuum within the system. Relative pressure at the control wells ranged from -7.42 – 0.00 (in. H₂O); the relative pressure reading at the active blower inlet was measured at -12.33 (in. H₂O). Methane concentrations at the control wells ranged between 0.0% to a maximum of 1.2% by volume, which was measured at control well CWII-1.

2.1.3 Condensate Drains

Table 3 (refer to **Appendix C**) presents the standing water measured within condensate drains CD-1 through CD-5. Standing water measured in these drains were recorded as follows: CD-1 (0.20'), CD-2 (0.40'), CD-3 (4.30'), CD-4 (5.20') and CD-5 (0.05'). Condensate drains with greater than one foot of standing water were drained of the accumulated water by TOH on February 17, 2022 during the on-site monitoring activities.

2.2 **Historical Methane Detections**

As reported in the East Northport Landfill First Quarter 2021 Monitoring Report, prepared by the prior consultants, methane has not been detected at any LFG monitoring wells since June 2002.

Table 4 (refer to **Appendix D**) presents a summary of methane concentrations detected at LFG control wells from January 2006 through the previous quarterly monitoring event. As shown on **Table 4**, with the exception of a distinct decrease in reported concentrations from July through September 2013, methane concentrations are generally consistent. **Table 5** (refer to **Appendix E**) includes the historic control well vacuum data.

3.0 CONCLUSIONS AND RECOMMENDATIONS

The following section summarizes D&B's conclusions and recommendations based on the results of this quarterly landfill gas monitoring event as detailed previously in this report.

3.1 Conclusions

Methane has not been detected at any wells within the LFG monitoring network since 2002, as previously mentioned in **Section 2.2**. The LFG control system has continued to produce sufficient vacuum around the perimeter of the waste mass to extract the relatively low levels of methane generated, and exhaust it through the Blower Station. The perimeter LFG monitoring wells confirm a measurable vacuum is extending to the perimeter of the Site. Methane concentrations throughout the control well system is minimal. The highest concentrations of methane were measured in control wells located on the southeastern portion of the landfill along Townline Road, with a maximum concentration of 1.2% by volume detected at CWII-1.

Vacuum pressure measured at control wells N-2 through N-6, and CWII-6 through CWII-9 were weaker than the vacuum pressure measured throughout the rest of the LFG control well system. The vacuum measured at N-2 through N-6, and CWII-6 through CWII-9 has been consistently weaker than the rest of the control wells since 2006. Due to flooding within the concrete vault which houses Control Well N-1, readings were not taken. No methane has been detected at these control wells or within monitoring wells located in their vicinity. The weaker vacuum pressure and lower flow rates measured at these wells are presently not a concern, however it will continue to be evaluated.

Air flow readings were not measured due to equipment malfunction. Measurable air flow and vacuum pressures, in addition to the presence of an audible "hissing" sound at the monitoring locations when opened, confirm the presence of air flow within the control wells. Air flow was confirmed at all control wells and blower station monitoring locations, with the exception of control well N-1. As described in more detail below, control well N-1 is damaged.

3.2 Recommendations

Based on the results of the first quarter 2022 landfill gas monitoring event and evaluation of data, the following recommendations are presented below with regard to future operation and maintenance of the East Northport Landfill and ongoing landfill gas control system monitoring and evaluation:

- Continue quarterly LFG monitoring at the East Northport Landfill.
- Continue evaluation of the landfill gas control system and its effectiveness.
- Several LFG monitoring probes had broken labcock valves and should be replaced (refer to **Table 1** in **Appendix A**). Broken labcocks prevented recording accurate vacuum and gas composition measurements at the following monitoring well probes:
 - MW-4: Probes A, B, C, and D
 - MW-19: Probes A, B, C, and D
 - MW-24: Probes A, B, and C
 - MW-25: Probe A
 - MW-28: Probe C
 - MW-41: Probe C
- MW-13, Probe B: PVC riser piping is broken, approximately 45” below the top of the protective outer well casing. The PVC piping should be repaired and new labcock installed.
- MW-45, Probe B: PVC riser piping is broken, approximately 17” below the top of the protective outer well casing. The PVC piping should be repaired and new labcock installed.
- As noted in **Appendix B** on **Table 2**, control well N-1 which is located on the Covanta of Huntington property on the northern boundary of the site, needs repair. A section of the PVC piping which connects the well to the control valve is damaged and there is a notable gap in the connection between this piping and the control valve. The control well connection should be repaired, if feasible.
- Blower #1 was in operation at the time of D&B’s arrival on-site and there were no problems with the system. Blower #2 currently serves as a backup for Blower #1.

Blower #2 is currently under repair. D&B and TOH are currently evaluating the replacement of Blower #2.

- Except for control well valves EXT-1, EXT-2, EXT-4, and EXT-5, all control wells were set at or near the fully open position. Control valves EXT-1, EXT-2, EXT-4, and EXT-5 were seized and inoperable and therefore, the valve positions could not be determined. The positions of all the control valves will not be changed since the system is operating as designed. D&B will continue to evaluate and assess the position of the control valves in relation to the effectiveness of methane extraction throughout the landfill. Although the LFG control system is effective, the system may need to be re-balanced during future monitoring events to improve vacuum in areas if higher concentrations of methane are detected, or to adjust to any changes in the systems.

APPENDIX A

TABLE 1 - RESULTS OF LANDFILL GAS MONITORING WELLS

**TABLE 1
LANDFILL GAS MONITORING RESULTS
TOWN OF HUNTINGTON
EAST NORTHPORT LANDFILL**

Monitoring Wells

Location ID	Probe	Condition	Date	CH ₄	CO ₂	O ₂	Relative Pressure	Comments
MW-2	A	OK	2/17/2022	0.0	0.1	21.1	0.00	
	B	OK	2/17/2022	0.0	0.5	20.7	0.02	
	C	OK	2/17/2022	0.0	0.2	21.0	0.01	
	D	OK	2/17/2022	0.0	0.1	21.2	0.00	
MW-3	A	OK	2/17/2022	0.0	0.2	21.0	0.02	
	B	OK	2/17/2022	0.0	3.1	17.9	0.08	
	C	OK	2/17/2022	0.0	0.2	20.7	0.01	
	D	OK	2/17/2022	0.0	0.2	20.9	0.03	
MW-4	A	Broken	-	-	-	-	-	Labcock monitoring point broken
	B	Broken	-	-	-	-	-	Labcock monitoring point broken
	C	Broken	-	-	-	-	-	Labcock monitoring point broken
	D	Broken	-	-	-	-	-	Labcock monitoring point broken
MW-5	A (7ft)	OK	2/17/2022	0.0	0.1	19.9	-0.04	
	B (15ft)	OK	2/17/2022	0.0	0.0	20.0	-0.03	
	C (30ft)	OK	2/17/2022	0.0	0.1	19.8	0.00	
MW-6	A (7ft)	OK	2/17/2022	0.0	0.1	19.8	-0.08	
	B (15ft)	OK	2/17/2022	0.0	0.2	19.9	-0.14	
	C (30ft)	OK	2/17/2022	0.0	0.0	20.0	-0.16	
MW-7	A (7ft)	OK	2/17/2022	0.0	0.4	19.8	-0.02	
	B (15ft)	OK	2/17/2022	0.0	0.2	20.0	-0.04	
	C (30ft)	OK	2/17/2022	0.0	0.2	20.0	-0.05	
MW-8	A (7ft)	OK	2/17/2022	0.0	0.2	14.9	-0.02	
	B (15ft)	OK	2/17/2022	0.0	0.2	20.0	-0.02	
	C (30ft)	OK	2/17/2022	0.0	0.1	20.3	-0.02	
MW-9	A	OK	2/17/2022	0.0	0.1	20.7	-0.04	Probe not labeled
	B	OK	2/17/2022	0.0	0.2	20.5	-0.41	Probe not labeled
	C	OK	2/17/2022	0.0	0.9	19.5	0.00	Probe not labeled
MW-10	A	OK	2/17/2022	0.0	0.1	20.5	-0.11	
	B	OK	2/17/2022	0.0	0.2	20.6	-0.08	
	C	OK	2/17/2022	0.0	0.2	20.6	-0.17	
	D	OK	2/7/2022	0.0	0.1	20.7	-0.13	

Notes:

CH₄, CO₂, and O₂ are reported in percent gas.

Relative well head pressure is reported in inches of water.

Atmospheric pressure is reported in inches of mercury.

Weather -

2/17/2022: 55°F, Partly Cloudy, 10-15 mph winds, Barometric Pressure 30.14" Hg

TABLE 1 (CONTINUED)
LANDFILL GAS MONITORING RESULTS
TOWN OF HUNTINGTON
EAST NORTHPORT LANDFILL

Monitoring Wells

Location ID	Probe	Condition	Date	CH ₄	CO ₂	O ₂	Relative Pressure	Comments
MW-11	A	OK	2/17/2022	0.0	0.1	20.7	-0.02	
	B	OK	2/17/2022	0.0	0.2	20.6	0.00	
	C	OK	2/17/2022	0.0	0.1	20.8	0.00	
	D	OK	2/17/2022	0.0	0.1	20.7	0.00	
MW-12	A	OK	2/17/2022	0.0	0.1	20.2	-0.06	
	B	OK	2/17/2022	0.0	0.1	20.1	-0.11	
	C	OK	2/17/2022	0.0	0.1	20.1	-0.14	
MW-13	A	OK	2/17/2022	0.0	0.4	20.3	-0.30	
	B	Broken	-	-	-	-	-	Disconnected about 45" below the top of casing
	C	OK	2/17/2022	0.0	0.1	20.9	-0.27	
MW-15	A	OK	2/17/2022	0.0	0.1	19.9	-0.12	
	B	OK	2/17/2022	0.0	0.1	20.3	-0.18	
	C	OK	2/17/2022	0.0	0.1	20.4	-0.22	
MW-16	A	OK	2/17/2022	0.0	0.1	19.9	-0.34	
	B	OK	2/17/2022	0.0	0.1	19.9	-0.38	
	C	OK	2/17/2022	0.0	0.1	19.9	-0.33	
MW-17	A (7ft)	OK	2/17/2022	0.0	0.1	20.1	-0.27	
	B (15ft)	OK	2/17/2022	0.0	0.1	20.0	-0.11	
	C (30ft)	OK	2/17/2022	0.0	0.1	20.0	-0.24	
MW-18	A (7ft)	OK	2/17/2022	0.0	0.1	20.1	-0.03	
	B (15ft)	OK	2/17/2022	0.0	0.1	20.2	-0.11	
	C (30ft)	OK	2/17/2022	0.0	0.1	20.2	-0.39	
MW-19	A	Broken	-	-	-	-	-	Labcock monitoring point broken
	B	Broken	-	-	-	-	-	Labcock monitoring point broken
	C	Broken	-	-	-	-	-	Labcock monitoring point broken
	D	Broken	-	-	-	-	-	Labcock monitoring point broken
MW-20	A (7ft)	OK	2/17/2022	0.0	0.1	20.8	-0.69	
	B (15ft)	OK	2/17/2022	0.0	0.1	20.8	-0.77	
	C (30ft)	OK	2/17/2022	0.0	0.1	20.8	-0.72	
MW-21	A	OK	2/17/2022	0.0	0.1	20.0	-0.37	
	B	OK	2/17/2022	0.0	0.2	20.1	-0.55	
	C	OK	2/17/2022	0.0	0.1	20.1	-0.51	
	D	OK	2/17/2022	0.0	0.1	20.2	-0.46	

Notes:

CH₄, CO₂, and O₂ are reported in percent gas.

Relative well head pressure is reported in inches of water.

Atmospheric pressure is reported in inches of mercury.

Weather - 2/17/2022: 55°F, Partly Cloudy, 10-15 mph winds, Barometric Pressure 30.14" Hg

TABLE 1 (CONTINUED)
LANDFILL GAS MONITORING RESULTS
TOWN OF HUNTINGTON
EAST NORTHPORT LANDFILL

Monitoring Wells

Location ID	Probe	Condition	Date	CH ₄	CO ₂	O ₂	Relative Pressure	Comments
MW-22	A (7ft)	OK	2/17/2022	0.0	0.1	20.1	-0.37	
	B (15ft)	OK	2/17/2022	0.0	0.1	20.2	-0.55	
	C (30ft)	OK	2/17/2022	0.0	0.1	20.1	-0.53	
MW-23	A	OK	2/17/2022	0.0	0.1	21.1	-0.11	
	B	OK	2/17/2022	0.0	0.1	21.1	-0.31	
	C	OK	2/17/2022	0.0	0.1	21.2	-0.21	
	D	OK	2/17/2022	0.0	0.1	21.2	-0.10	
MW-24	A (7ft)	Broken	-	-	-	-	-	Labcock monitoring point broken
	B (15ft)	Broken	-	-	-	-	-	Labcock monitoring point broken
	C (30ft)	Broken	-	-	-	-	-	Labcock monitoring point broken
MW-25	A (7ft)	Broken	-	-	-	-	-	Labcock monitoring point broken
	B (15ft)	OK	2/17/2022	0.0	0.1	20.3	-0.39	
	C (30ft)	OK	2/17/2022	0.0	0.1	20.3	-0.88	
MW-26	A (7ft)	OK	2/17/2022	0.0	0.1	20.3	-0.47	Probe not labeled
	B (15ft)	OK	2/17/2022	0.0	0.1	20.4	-0.32	Probe not labeled
	C (30ft)	OK	2/17/2022	0.0	0.1	20.4	-0.13	Probe not labeled
	D (55ft)	OK	2/17/2022	0.0	0.1	20.4	-0.33	Probe not labeled
MW-27	A (7ft)	OK	2/17/2022	0.0	0.1	21.2	-0.29	
	B (15ft)	OK	2/17/2022	0.0	0.1	20.8	0.00	
	C (30ft)	OK	2/17/2022	0.0	0.0	20.7	-0.03	
MW-28	A	OK	2/17/2022	0.0	0.0	20.8	0.00	
	B	OK	2/17/2022	0.0	0.2	20.7	-0.06	
	C	Broken	-	-	-	-	-	Labcock monitoring point broken
MW-37	A	OK	2/17/2022	0.0	0.2	21.1	-0.01	
	B	OK	2/17/2022	0.0	0.1	21.2	0.00	
	C	OK	2/17/2022	0.0	0.1	21.2	-0.02	
MW-38	A (7ft)	OK	2/17/2022	0.0	0.1	21.9	-0.08	
	B (15ft)	OK	2/17/2022	0.0	0.1	21.0	-0.16	
	C (30ft)	OK	2/17/2022	0.0	0.1	21.0	-0.20	
MW-40	A	OK	2/17/2022	0.0	0.1	20.9	-0.01	
	B	OK	2/17/2022	0.0	0.1	21.0	-0.05	
	C	OK	2/17/2022	0.0	0.1	20.9	-0.06	
	D	OK	2/17/2022	0.0	0.1	20.9	-0.10	

Notes:

CH₄, CO₂, and O₂ are reported in percent gas.

Relative well head pressure is reported in inches of water.

Atmospheric pressure is reported in inches of mercury.

Weather - 2/17/2022: 55°F, Partly Cloudy, 10-15 mph winds, Barometric Pressure 30.14" Hg

TABLE 1 (CONTINUED)
LANDFILL GAS MONITORING RESULTS
TOWN OF HUNTINGTON
EAST NORTHPORT LANDFILL

Monitoring Wells

Location ID	Probe	Condition	Date	CH ₄	CO ₂	O ₂	Relative Pressure	Comments
MW-41	A	OK	2/17/2022	0.0	0.1	21.0	-0.07	
	B	OK	2/17/2022	0.0	0.1	21.0	-0.02	
	C	Broken	-	-	-	-	-	Labcock monitoring point broken
MW-42	A	OK	2/17/2022	0.0	0.1	20.0	-0.03	
	B	OK	2/17/2022	0.0	0.1	21.0	-0.04	
	C	OK	2/17/2022	0.0	0.1	21.0	-0.08	
MW-43	A	OK	2/17/2022	0.0	0.1	21.0	-0.04	
	B	OK	2/17/2022	0.0	0.1	21.0	-0.09	
	C	OK	2/17/2022	0.0	0.1	21.0	-0.04	
MW-44	A	OK	2/17/2022	0.0	0.1	21.0	-0.02	
	B	OK	2/17/2022	0.0	0.1	21.0	-0.33	
	C	OK	2/17/2022	0.0	0.1	21.0	-0.12	
MW-45	A	OK	2/17/2022	0.0	0.1	21.0	-0.02	
	B	Broken	-	-	-	-	-	Disconnected about 17" below the top of casing
	C	OK	2/17/2022	0.0	0.1	21.0	0.00	
MW-46	A	OK	2/17/2022	0.0	0.1	21.0	0.02	
	B	OK	2/17/2022	0.0	0.1	21.0	0.04	
	C	OK	2/17/2022	0.0	0.1	21.1	0.00	
	D	OK	2/17/2022	0.0	0.1	21.1	0.00	
MW-47	A	OK	2/17/2022	0.0	0.1	20.9	-0.01	
	B	OK	2/17/2022	0.0	0.1	21.0	0.02	
	C	OK	2/17/2022	0.0	0.1	21.0	0.04	
MW-48	A	OK	2/17/2022	0.0	0.2	20.8	0.00	
	B	OK	2/17/2022	0.0	0.2	20.9	0.01	
	C	OK	2/17/2022	0.0	0.1	21.0	0.06	
MW-49	A	OK	2/17/2022	0.0	0.3	20.6	0.00	
	B	OK	2/17/2022	0.0	0.6	20.2	-0.16	
	C	OK	2/17/2022	0.0	0.6	20.4	-0.04	
MW-51	A	OK	2/17/2022	0.0	0.1	20.7	-0.04	
	B	OK	2/17/2022	0.0	0.1	20.7	-0.09	
	C	OK	2/17/2022	0.0	0.1	20.7	-0.06	

Notes:

CH₄, CO₂, and O₂ are reported in percent gas.

Relative well head pressure is reported in inches of water.

Atmospheric pressure is reported in inches of mercury.

Weather - 2/17/2022: 55°F, Partly Cloudy, 10-15 mph winds, Barometric Pressure 30.14" Hg

TABLE 1 (CONTINUED)
LANDFILL GAS MONITORING RESULTS
TOWN OF HUNTINGTON
EAST NORTHPORT LANDFILL

Monitoring Wells

Location ID	Probe	Condition	Date	CH ₄	CO ₂	O ₂	Relative Pressure	Comments
MW-A	A	OK	2/16/2022	0.0	0.1	21.0	-0.27	
	B	OK	2/16/2022	0.0	0.1	21.5	-0.25	
MW-B	A	OK	2/16/2022	0.0	0.1	21.6	-0.15	
	B	OK	2/16/2022	0.0	0.1	21.7	-0.27	

Notes:

CH₄, CO₂, and O₂ are reported in percent gas.

Relative well head pressure is reported in inches of water.

Atmospheric pressure is reported in inches of mercury.

Weather - 2/16/2022: 40-45°F, Overcast, 10-15 mph winds, Barometric Pressure 30.63" Hg

TABLE 1 (CONTINUED)
LANDFILL GAS MONITORING RESULTS
EAST NORTHPORT LANDFILL
EAST NORTHPORT, NEW YORK

Monitoring Wells
Animal Control Facility

Location ID	Well Condition	Date	CH ₄	CO ₂	O ₂	Relative Pressure	Comments
AS-NW	OK	2/17/2022	0.0	0.1	20.5	0.00	
AS-NE	OK	2/17/2022	0.0	0.1	20.5	-0.01	
AS-SE	OK	2/17/2022	0.0	0.1	20.5	-0.06	
AS-SC	OK	2/17/2022	0.0	0.1	20.5	0.00	
AS-SW	OK	2/17/2022	0.0	0.1	20.5	0.00	

Notes:

CH₄, CO₂, and O₂ are reported in percent gas.

Relative well head pressure is reported in inches of water.

Atmospheric pressure is reported in inches of mercury.

Weather - 2/17/2022: 55°F, Partly Cloudy, 10-15 mph winds, Barometric Pressure 30.14" Hg

APPENDIX B

TABLE 2 – RESULTS OF LANDFILL GAS CONTROL WELLS

**TABLE 2
LANDFILL GAS MONITORING RESULTS
TOWN OF HUNTINGTON
EAST NORTHPORT LANDFILL**

LFG Control Wells

Location ID	Date	CH ₄	CO ₂	O ₂	Temp.	Relative Pressure	Flow Rate (CFM)	Comments
CWI-4	2/16/2022	0.0	0.7	20.9	NR	-6.16	Confirmed	
CWI-5	2/16/2022	0.2	1.7	18.9	NR	-7.19	Confirmed	
CWI-6	2/16/2022	0.1	1.7	18.7	NR	-7.42	Confirmed	
CWI-7	2/16/2022	0.1	1.7	18.5	NR	-7.02	Confirmed	
CWII-1	2/16/2022	1.2	2.8	17.1	NR	-6.51	Confirmed	
CWII-2	2/16/2022	0.0	0.6	20.3	NR	-5.52	Confirmed	
CWII-3	2/16/2022	0.4	2.8	17.2	NR	-6.92	Confirmed	
CWII-4	2/16/2022	0.6	3.3	17.0	NR	-6.80	Confirmed	
CWII-5	2/16/2022	0.0	1.8	19.2	NR	-7.00	Confirmed	
CWII-6	2/17/2022	0.0	1.3	19.1	NR	0.00	Confirmed	Vault was flooded and pumped on 2/17/2022.
CWII-7	2/16/2022	0.0	0.3	20.7	NR	-0.07	Confirmed	
CWII-8	2/16/2022	0.0	1.0	20.0	NR	-0.04	Confirmed	
CWII-9	2/16/2022	0.0	2.3	18.9	NR	-0.07	Confirmed	
N1	2/16/2022	--	--	--	--	--	--	Flooding in vault.
N2	2/16/2022	0.0	0.1	22.0	NR	-0.03	Confirmed	
N3	2/16/2022	0.0	0.5	21.4	NR	-0.04	Confirmed	Missing a labcock
N4	2/16/2022	0.0	0.5	21.1	NR	-0.05	Confirmed	
N5	2/16/2022	0.0	0.8	20.3	NR	-0.17	Confirmed	
N6	2/16/2022	0.0	0.2	20.2	NR	-0.09	Confirmed	
NW1	2/16/2022	0.0	0.3	21.3	NR	-6.98	Confirmed	
NW2	2/16/2022	0.0	0.3	21.1	NR	-7.14	Confirmed	
NW3	2/16/2022	0.0	0.4	21.0	NR	-6.04	Confirmed	
NW4	2/16/2022	0.0	0.6	21.1	NR	-5.21	Confirmed	
NW5	2/16/2022	0.0	0.2	20.8	NR	-4.20	Confirmed	
NW6	2/16/2022	0.0	0.4	20.8	NR	-4.33	Confirmed	
EXT-1	2/16/2022	0.0	0.7	19.9	NR	-0.10	Confirmed	Valve is seized/inoperable
EXT-2	2/16/2022	0.0	1.5	18.9	NR	-1.85	Confirmed	Valve is seized/inoperable
EXT-3	2/16/2022	0.0	2.3	17.9	NR	-4.59	Confirmed	
EXT-4	2/16/2022	0.0	3.5	20.3	NR	-4.06	Confirmed	Valve is seized/inoperable
EXT-5	2/16/2022	0.0	1.2	19.9	NR	-3.40	Confirmed	Valve is seized/inoperable
BS-1	2/16/2022	0.2	1.2	19.9	NR	-12.33	Confirmed	measured on intake side of blower
BS-2	2/16/2022	0.0	0.1	21.2	NR	-1.59	Confirmed	Blower #2 is not running, valve leading to it is closed
BS-3	2/16/2022	0.2	1.1	20.2	NR	+4.02	Confirmed	Measured on exhaust side of blower

Notes:

CH₄, CO₂, and O₂ are reported in percent gas. Temperature is in degrees Fahrenheit

Relative well head pressure is reported in inches of water.

BS - Blower Station

CFM - Cubic Feet per Minute

NR - Not recorded, due to equipment malfunction.

Weather - 2/16/2022: 40-45°F, Overcast, 10-15 mph winds, Barometric Pressure 30.63" Hg
2/17/2022: 55°F, Partly Cloudy, 10-15 mph winds, Barometric Pressure 30.14" Hg

APPENDIX C

TABLE 3 – CONDENSATE DRAIN EVALUATION

**TABLE 3
LANDFILL MONITORING RESULTS
TOWN OF HUNTINGTON
EAST NORTHPORT LANDFILL**

Condensate Drain Evaluation

Location ID	Date	Working Properly (Y/N)	Water Accumulation (in feet)
CD-1	2/16/2022	Y	0.20
CD-2	2/16/2022	Y	0.40
CD-3	2/16/2022	Y	4.30
CD-4	2/16/2022	Y	5.20
CD-5	2/16/2022	Y	0.05

Notes:

Fluid level measured with Water Level Meter

CD - Condensate Drain

Weather - 2/16/2022: 40-45°F, Overcast, 10-15 mph winds, Barometric Pressure 30.63" Hg

APPENDIX D

**TABLE 4 – HISTORICAL LANDFILL GAS CONTROL WELL METHANE
DATA**

Table 4
Historical Landfill Gas Control Well Methane Data
Town of Huntington East Northport Landfill, East Northport, New York
for period of record between January, 2006 to Present

Well	1/06	2/06	3/06	4/06	5/06	6/06	7/06	8/06	9/06	10/06	11/06	12/06	1/07	2/07	3/07	4/07
CWI-4	0.0	0.3	0.4	0.2	0.1	0.3	0.1	0.0	0.0	0.2	0.1	0.1	0.1	0.1	0.0	0.1
CWI-5	0.0	1.8	2.0	1.5	0.8	1.5	0.2	0.0	0.0	1.0	0.8	0.7	0.7	2.1	0.0	0.7
CWI-6	0.1	0.3	0.1	0.4	1.0	0.9	0.2	0.0	0.0	0.0	1.0	0.6	0.6	0.0	0.0	0.8
CWI-7	0.2	5.0	6.0	5.0	0.1	0.7	0.6	0.0	0.0	0.2	2.2	1.5	1.1	NA	0.1	2.0
CWII-1	0.4	5.0	6.0	2.7	1.6	2.4	2.6	7.0	0.0	0.3	4.0	4.0	3.8	5.0	5.0	3.8
CWII-2	0.2	4.5	4.2	3.4	2.7	1.9	1.0	2.2	0.0	3.0	1.6	1.6	1.6	1.2	1.7	1.7
CWII-3	0.2	2.3	2.1	0.9	1.8	1.5	1.5	1.7	0.0	0.2	0.0	0.7	1.1	1.1	1.3	NA
CWII-4	0.2	4.0	3.8	1.0	4.0	1.3	0.8	4.7	0.0	0.3	5.0	2.8	2.8	1.7	3.6	2.7
CWII-5	0.0	1.0	4.2	0.5	0.7	0.6	0.4	1.5	0.0	0.0	0.8	0.4	0.6	0.8	0.2	0.4
CWII-6	0.2	3.5	0.7	0.8	2.0	0.6	1.1	0.5	0.0	0.1	0.9	1.4	1.7	1.7	0.3	1.2
CWII-7	0.0	0.1	3.4	0.0	0.0	0.0	0.0	0.2	0.0	0.0	0.1	0.0	0.0	0.0	0.0	0.0
CWII-8	0.0	0.0	0.0	0.0	0.0	0.0	0.2	0.0	0.0	0.0	0.0	0.0	0.0	0.0	0.0	0.0
CWII-9	0.0	1.1	0.0	0.7	0.6	0.2	0.5	0.4	0.0	0.0	0.4	0.4	0.7	0.6	0.4	0.3
NW-1	0.0	0.0	1.0	0.8	0.0	0.0	0.0	0.0	0.0	0.0	0.0	0.0	0.0	0.0	0.0	0.0
NW-2	0.0	0.0	0.0	0.0	0.0	0.0	0.0	0.0	0.0	0.0	0.0	0.0	0.0	0.0	0.0	0.0
NW-3	0.0	0.0	0.0	0.0	0.0	0.0	0.0	0.0	0.0	0.0	0.0	0.0	0.0	0.0	0.0	0.0
NW-4	0.0	0.0	0.0	0.0	0.0	0.0	0.0	0.0	0.0	0.0	0.0	0.0	0.0	0.0	0.0	0.0
NW-5	0.0	0.0	0.0	0.0	0.0	0.0	0.0	0.0	0.0	0.0	0.0	0.0	0.0	0.0	0.0	0.0
NW-6	0.0	0.0	0.0	0.0	0.0	0.0	0.0	2.0	0.0	0.0	0.0	0.0	0.0	0.0	0.0	0.0
Ext-1	0.0	0.0	0.0	0.0	0.0	0.1	0.0	0.0	0.0	0.0	0.0	0.0	0.0	0.0	0.0	0.0
Ext-2	0.0	0.0	0.0	0.0	0.0	0.1	0.1	0.2	0.0	0.0	0.0	0.0	0.0	0.0	0.0	0.0
Ext-3	0.2	0.0	0.0	0.0	0.2	0.0	0.8	0.2	0.0	3.0	1.2	0.3	1.3	0.2	0.0	0.1
Ext-4	0.2	0.0	0.0	0.0	0.4	0.2	0.4	0.1	0.0	2.0	0.4	0.2	1.0	0.1	0.0	0.1
Ext-5	0.0	0.0	0.0	0.0	0.0	0.0	0.0	0.0	0.0	0.0	0.0	0.0	0.0	0.0	0.0	0.0
N-1	0.0	0.0	0.0	0.0	0.0	0.0	0.0	0.1	0.0	0.0	0.0	0.0	0.0	0.0	0.0	0.0
N-2	2.6	1.3	0.6	11.0	NA	0.0	4.8	0.0	0.8	4.4	3.0	0.5	0.2	0.0	3.1	4.0
N-3	0.0	0.0	0.0	0.0	0.0	0.0	0.0	0.0	0.0	0.0	0.0	0.0	0.0	0.0	0.0	0.0
N-4	0.0	0.0	0.0	0.0	0.0	0.0	0.0	0.0	0.0	0.0	0.0	0.0	0.0	0.0	0.0	0.0
N-5	0.0	0.0	0.0	0.2	0.0	0.0	0.0	0.0	0.0	0.0	0.0	0.0	0.0	0.0	0.0	0.0
N-6	NA	0.0	0.0	0.1	NA	0.7	0.1	0.1	0.0	0.0	NA	NA	NA	NA	NA	0.0
BS-1	0.1	0.0	0.6	0.9	0.7	0.4	0.4	0.0	0.1	0.9	0.7	0.5	0.5	0.6	0.1	0.5

NA - Not Available

Measured in % Volume

Note: Data reported prior to June 2021 was done by prior consultant

Table 4 (continued)
Historical Landfill Gas Control Well Methane Data
Town of Huntington East Northport Landfill, East Northport, New York
for period of record between January, 2006 to Present

Well	5/07	6/07	7/07	8/07	9/07	10/07	11/07	12/07	1/08	2/08	3/08	4/08	5/08	6/08	7/08	8/08
CWI-4	0.2	0.2	0.2	0.1	0.1	0.0	0.0	0.0	0.0	0.1	0.1	0.1	0.0	0.1	0.1	0.1
CWI-5	0.8	0.9	0.8	0.7	0.8	0.8	0.0	0.7	0.5	0.5	2.5	0.4	0.2	0.3	0.4	0.0
CWI-6	0.7	1.1	1.3	0.8	1.0	0.8	0.1	0.5	0.6	0.9	0.5	0.4	0.3	0.5	0.7	0.3
CWI-7	2.3	2.4	2.3	2.0	3.0	2.6	0.2	2.0	2.2	2.1	1.3	1.1	0.9	1.2	1.3	0.5
CWII-1	4.6	9.0	8.0	5.0	5.0	1.3	5.0	7.0	7.0	10.0	4.0	3.3	2.2	3.8	3.8	1.0
CWII-2	1.9	2.3	2.0	1.5	1.8	6.0	1.4	1.0	1.1	1.2	0.7	0.9	0.6	0.7	0.9	2.5
CWII-3	NA	3.8	2.7	4.0	3.5	1.8	2.8	0.3	1.5	2.2	1.4	1.0	0.5	1.0	1.4	0.7
CWII-4	2.6	3.5	3.3	3.1	3.5	2.6	3.5	2.5	2.1	2.7	2.0	1.5	1.1	1.5	1.5	1.0
CWII-5	0.9	1.7	1.3	1.7	1.8	0.9	1.0	0.2	0.3	0.4	2.5	0.3	0.3	0.5	0.8	1.2
CWII-6	1.7	2.5	2.0	2.0	2.9	1.7	2.1	0.3	1.0	0.7	0.7	0.7	0.6	0.8	0.0	0.5
CWII-7	0.0	0.0	0.0	0.0	0.0	0.0	0.0	0.0	0.0	0.0	0.0	0.0	0.0	0.0	0.0	1.1
CWII-8	0.0	0.0	0.0	0.0	0.0	0.0	0.0	0.0	0.0	0.0	0.0	0.0	0.0	0.0	0.0	0.0
CWII-9	0.5	0.5	0.5	0.4	0.6	0.4	0.5	0.3	4.5	0.2	0.2	0.2	0.2	0.2	0.1	0.3
NW-1	0.0	0.0	0.0	0.0	0.0	0.0	0.0	0.0	0.0	0.0	0.0	0.0	0.0	0.0	0.1	0.0
NW-2	0.0	0.0	0.0	0.0	0.0	0.0	0.0	0.0	0.0	0.0	0.0	0.0	0.0	0.0	0.0	0.0
NW-3	0.0	9.0	0.0	0.0	0.0	0.0	0.0	0.0	0.0	0.0	0.0	0.0	0.0	0.0	0.0	0.0
NW-4	0.0	0.0	0.0	0.0	0.0	0.0	0.0	0.0	0.0	0.0	0.0	0.0	0.0	0.0	0.0	0.0
NW-5	0.0	0.0	0.0	0.0	0.0	0.0	0.0	0.0	0.0	0.0	0.0	0.0	0.0	0.0	0.0	0.0
NW-6	0.0	0.0	0.0	0.0	0.0	0.0	0.0	0.0	0.0	0.0	0.0	0.0	0.0	0.0	0.0	0.0
Ext-1	0.0	0.1	0.0	0.0	0.0	0.0	0.0	0.0	0.0	0.0	0.0	0.0	0.0	0.0	0.0	0.0
Ext-2	0.1	0.1	0.0	0.0	0.0	0.0	0.0	0.0	0.0	0.0	0.0	0.0	0.0	0.0	0.0	0.0
Ext-3	0.0	0.0	0.0	0.0	0.0	0.0	0.3	0.0	1.5	1.5	0.2	0.0	0.0	0.0	0.0	0.0
Ext-4	0.3	0.0	0.1	0.0	0.0	0.0	0.0	0.0	0.0	0.0	0.1	0.0	0.0	0.0	0.0	0.0
Ext-5	0.0	0.0	0.0	0.0	0.0	0.0	0.0	0.0	0.0	0.0	0.0	0.0	0.0	0.0	0.0	0.0
N-1	0.0	0.0	0.0	0.0	0.0	0.0	0.0	0.0	0.0	0.0	0.0	0.0	0.0	0.0	0.0	0.0
N-2	2.8	3.4	3.3	3.0	3.4	4.7	0.3	3.5	2.0	NA	1.5	2.8	2.2	2.4	2.3	2.2
N-3	0.0	0.0	0.0	0.0	0.0	0.0	0.0	0.0	0.0	0.0	0.0	0.0	0.0	0.0	0.0	0.0
N-4	0.0	0.0	0.0	0.0	0.0	0.0	0.0	0.0	0.0	0.0	0.0	0.0	0.0	0.0	0.0	0.0
N-5	0.0	0.0	0.0	0.0	0.0	0.0	0.0	2.0	0.0	0.0	0.0	0.0	0.0	0.0	0.0	0.0
N-6	0.0	0.0	0.0	0.0	0.0	2.0	NA	NA	NA	NA	NA	NA	NA	NA	NA	NA
BS-1	0.5	0.7	0.4	0.7	0.7	0.6	0.0	0.5	0.4	0.5	0.3	0.3	0.2	0.3	0.3	0.3

NA - Not Available

Measured in % Volume

Note: Data reported prior to June 2021 was done by prior consultant

Table 4 (continued)
Historical Landfill Gas Control Well Methane Data
Town of Huntington East Northport Landfill, East Northport, New York
for period of record between January, 2006 to Present

Well	9/08	10/08	11/08	12/08	1/09	2/09	3/09	4/09	5/09	6/09	7/09	8/09	9/09	10/09	11/09	12/09
CWI-4	0.0	0.0	0.0	0.0	0.0	0.0	0.0	0.1	0.2	0.0	0.0	0.0	0.0	0.1	0.2	0.3
CWI-5	0.2	1.5	0.3	0.0	0.3	0.0	0.1	0.2	0.2	0.0	0.1	0.0	0.2	0.5	0.4	0.3
CWI-6	0.2	0.2	0.6	0.0	0.5	0.0	0.0	0.3	0.3	0.0	0.0	0.1	0.0	1.1	1.0	1.2
CWI-7	0.8	0.4	2.0	NA	0.6	0.0	0.3	1.0	1.2	0.0	0.1	0.1	0.1	NA	NA	NA
CWII-1	1.8	1.1	3.3	0.0	2.2	0.1	0.5	1.5	1.6	0.9	5.0	5.2	4.5	5.0	4.8	4.3
CWII-2	0.4	0.3	1.0	0.0	0.5	0.1	0.2	0.5	0.6	0.0	3.3	3.5	3.1	1.8	1.6	1.8
CWII-3	0.3	0.1	1.0	0.0	0.5	0.0	0.3	0.9	1.0	0.7	2.2	2.4	2.4	3.0	2.8	2.7
CWII-4	0.7	0.3	1.5	NA	0.1	0.1	0.5	1.6	1.4	0.8	1.5	1.7	1.8	2.0	1.6	1.9
CWII-5	0.2	0.0	0.4	0.0	0.1	0.0	0.1	0.1	0.0	0.2	0.2	0.1	1.2	1.1	1.0	1.7
CWII-6	0.6	0.8	1.0	NA	0.0	0.0	0.2	NA	NA	NA	NA	NA	0.8	NA	NA	NA
CWII-7	0.0	0.0	0.0	0.0	0.0	0.0	0.0	0.0	0.0	0.5	0.0	0.0	0.0	0.0	0.0	0.1
CWII-8	0.0	0.0	0.0	0.0	0.0	0.0	0.0	0.1	0.2	0.0	0.0	0.0	0.0	0.0	0.0	0.0
CWII-9	0.1	0.1	0.5	0.0	0.0	0.0	0.0	0.0	0.0	0.6	0.3	0.2	0.6	0.2	0.1	0.4
NW-1	0.0	0.0	0.0	0.0	0.0	0.0	0.0	0.0	0.0	0.0	0.0	0.0	0.0	0.0	0.0	NA
NW-2	0.0	0.0	0.0	0.0	0.0	0.0	0.0	0.0	0.0	0.0	0.0	0.0	0.0	0.0	0.0	0.0
NW-3	0.0	0.0	0.0	0.0	0.0	0.0	0.0	0.0	0.0	0.0	0.0	0.0	0.0	0.0	0.0	0.0
NW-4	0.0	0.0	0.0	0.0	0.0	0.0	0.0	0.0	0.0	0.0	0.0	0.0	0.0	0.0	0.0	0.0
NW-5	0.0	0.0	0.0	0.0	0.0	0.0	0.0	0.0	0.0	0.0	0.0	0.0	0.0	0.0	0.0	0.0
NW-6	0.0	0.0	0.0	0.0	0.0	0.0	0.0	0.0	0.0	0.0	0.0	0.0	0.0	0.0	0.0	NA
Ext-1	0.0	0.0	0.0	0.0	0.0	0.0	0.0	0.0	0.0	0.0	0.0	0.0	0.0	0.0	0.0	0.0
Ext-2	0.0	0.0	0.0	0.0	0.0	0.0	0.0	0.0	0.0	0.0	0.0	0.0	0.0	0.0	0.0	0.0
Ext-3	0.0	0.0	0.0	0.0	0.0	0.0	0.0	0.0	0.0	0.1	0.0	0.0	0.0	0.0	0.0	0.0
Ext-4	0.0	0.0	0.0	0.0	0.1	0.1	0.0	0.0	0.4	0.1	0.0	0.0	0.0	0.1	0.0	0.0
Ext-5	0.0	0.0	0.0	0.0	0.0	0.0	0.0	0.0	0.3	0.0	0.0	0.0	0.0	0.0	0.1	0.0
N-1	0.0	NA	NA	NA	NA	0.0	0.0	0.0	0.0	NA	0.0	0.0	0.0	0.0	NA	0.0
N-2	2.0	2.3	2.0	0.0	2.5	0.0	1.5	1.5	0.0	4.0	3.5	3.8	3.8	9.0	8.4	0.6
N-3	0.0	0.7	0.0	0.0	0.0	0.0	0.0	0.0	1.4	0.0	0.0	0.0	0.0	0.0	0.0	0.0
N-4	0.0	0.0	0.0	NA	0.0	0.0	0.0	0.0	0.0	0.0	0.0	0.0	0.0	0.0	0.0	0.1
N-5	0.0	0.0	0.0	NA	0.0	0.0	0.0	0.0	0.0	0.0	0.1	0.2	0.1	0.0	0.0	0.0
N-6	0.0	NA	NA	NA	0.0	0.0	0.0	0.0	0.0	0.0	0.0	0.0	0.0	NA	NA	0.0
BS-1	0.1	0.1	0.0	0.0	0.2	0.0	0.0	0.0	0.0	0.8	0.0	0.0	0.0	0.5	0.5	0.3

NA - Not Available

Measured in % Volume

Note: Data reported prior to June 2021 was done by prior consultant

Table 4 (continued)
Historical Landfill Gas Control Well Methane Data
Town of Huntington East Northport Landfill, East Northport, New York
for period of record between January, 2006 to Present

Well	1/10	2/10	3/10	4/10	5/10	6/10	7/10	8/10	9/10	10/10	11/10	1/12	2/12	3/12	4/12	5/12
CWI-4	0.1	NA	0.0	0.1	0.5	0.1	0.0	0.1	0.1	0.0	0.0	0.1	0.0	0.0	0.1	0.2
CWI-5	1.0	1.0	0.8	0.2	0.3	1.0	0.0	0.7	0.5	0.2	0.2	1.0	0.3	0.4	0.9	0.0
CWI-6	NA	0.0	1.2	1.1	0.8	0.7	NA	0.6	0.8	0.6	0.2	0.7	0.0	0.0	0.7	0.2
CWI-7	NA	NA	NA	NA	NA	NA	NA	NA	NA	0.3	1.0	1.6	0.1	0.2	0.1	0.0
CWII-1	4.0	3.5	5.0	4.2	4.1	3.3	6.0	6.0	5.0	1.1	5.0	5.0	0.6	0.5	5.0	3.0
CWII-2	1.5	1.0	2.3	1.9	2.1	1.6	3.0	2.2	2.0	6.0	1.5	3.0	0.2	0.3	0.2	12.0
CWII-3	1.5	1.4	1.2	0.0	0.3	1.3	6.0	3.5	2.2	3.0	1.1	10.0	0.1	0.3	3.0	2.5
CWII-4	2.0	2.0	0.5	0.1	0.0	1.5	2.2	1.5	1.3	2.8	1.3	4.0	0.0	0.0	2.0	1.5
CWII-5	0.5	1.0	NA	0.1	0.1	1.0	2.1	1.6	1.5	1.5	0.7	0.7	0.0	0.0	1.5	0.0
CWII-6	NA	NA	NA	NA	NA	NA	NA	NA	NA	1.1	NA	0.0	N/A	N/A	NA	NA
CWII-7	0.1	0.0	0.0	0.1	0.1	0.0	0.0	0.0	0.1	0.0	0.1	0.1	0.0	0.0	0.1	0.0
CWII-8	0.1	0.0	0.0	0.0	0.5	0.1	0.4	0.0	0.0	0.0	0.0	0.0	0.0	0.0	0.0	0.1
CWII-9	0.2	0.1	0.0	0.1	0.1	0.2	0.0	0.5	0.5	0.4	0.4	0.1	0.0	0.0	0.6	0.3
NW-1	0.0	0.0	0.0	0.1	0.0	0.0	0.0	0.0	0.0	0.0	0.0	0.0	0.0	0.0	0.0	0.0
NW-2	0.0	0.0	0.0	0.1	0.0	0.0	0.0	0.0	0.0	0.0	0.0	0.0	0.0	0.0	0.0	0.0
NW-3	0.0	0.0	0.0	0.0	0.0	0.0	0.0	0.0	0.0	0.0	0.1	0.0	0.0	0.0	0.0	0.0
NW-4	0.0	0.0	0.0	0.1	0.2	0.0	0.0	0.0	0.0	0.0	0.1	0.0	0.0	0.0	0.0	0.0
NW-5	0.0	0.0	0.0	0.0	0.0	0.0	0.0	0.0	0.0	0.0	0.0	0.0	0.0	0.0	0.0	0.0
NW-6	0.0	0.0	0.0	0.0	0.0	0.0	0.0	0.0	0.0	0.0	0.0	0.0	0.0	0.0	0.0	0.0
Ext-1	0.0	0.0	0.0	0.0	0.0	0.0	0.0	0.0	0.0	0.0	0.0	0.0	0.0	0.0	0.0	0.0
Ext-2	0.0	0.0	0.0	0.0	0.0	0.0	0.0	0.0	0.0	0.0	0.1	0.0	0.0	0.0	0.1	0.0
Ext-3	0.1	0.4	0.2	0.0	0.0	0.2	0.0	0.4	0.4	0.4	0.5	1.5	0.0	0.0	0.1	0.0
Ext-4	0.1	0.4	0.0	0.0	0.1	0.0	0.0	0.0	0.0	0.0	0.1	0.3	0.0	0.0	0.3	0.0
Ext-5	0.1	0.3	0.0	0.0	0.0	0.0	0.0	0.0	0.0	0.0	0.2	0.2	0.0	0.0	0.1	0.0
N-1	0.0	0.0	NA	0.0	0.0	0.0	0.0	0.0	0.0	0.0	0.0	0.0	0.0	0.0	0.0	0.0
N-2	4.5	4.0	NA	0.0	1.6	0.0	0.0	0.0	4.0	4.2	3.5	0.0	N/A	0.2	0.0	0.0
N-3	0.0	0.0	0.0	0.0	0.0	0.0	0.0	0.0	0.0	0.0	0.0	0.0	0.0	0.0	0.0	0.0
N-4	0.0	NA	0.0	0.0	0.0	0.0	0.0	0.0	0.0	0.0	0.0	0.0	0.0	0.0	0.0	0.0
N-5	0.0	0.0	0.0	0.0	0.0	0.0	0.0	0.0	0.0	0.0	0.0	0.0	0.0	0.0	0.0	0.0
N-6	NA	NA	NA	NA	NA	NA	NA	NA	0.0	0.0	0.0	0.0	0.0	0.1	0.1	0.0
BS-1	0.4	0.3	0.0	0.0	0.1	0.1	0.0	0.2	0.5	0.2	0.4	1.0	0.0	0.7	0.6	0.5

NA - Not Available

Measured in % Volume

Note: Data reported prior to June 2021 was done by prior consultant

Table 4 (continued)
Historical Landfill Gas Control Well Methane Data
Town of Huntington East Northport Landfill, East Northport, New York
for period of record between January, 2006 to Present

Well	6/12	7/12	8/12	9/12	10/12	11/12	12/12	1/13	2/13	3/13	4/13	5/13	6/13	7/13	8/13	9/13
CWI-4	0.1	0.1	0.0	0.0	NA	0.0	0.1	0.1	0.0	0.0	0.0	0.1	0.1	0.1	0.0	0.0
CWI-5	0.5	0.3	1.0	0.5	NA	0.5	0.4	0.4	0.4	0.4	0.2	0.3	0.5	0.5	0.0	0.0
CWI-6	1.0	0.6	0.7	0.8	NA	0.3	0.6	0.5	0.4	0.4	0.2	0.4	0.5	0.2	0.0	0.0
CWI-7	1.5	0.3	NA	NA	NA	0.8	0.7	1.0	1.0	1.3	0.0	1.0	1.2	0.6	0.1	0.0
CWII-1	4.6	4.0	8.0	9.0	NA	4.0	9.0	3.3	0.0	5.0	3.0	1.0	0.0	0.7	0.0	0.0
CWII-2	2.5	0.9	2.0	2.8	NA	1.0	1.0	10.0	0.8	1.6	0.6	0.6	1.2	0.2	0.0	0.0
CWII-3	4.2	2.0	3.0	3.0	NA	2.5	2.1	1.5	1.1	2.6	0.5	1.8	3.2	0.8	0.0	0.0
CWII-4	2.4	1.1	1.9	2.1	NA	2.0	2.4	1.8	2.0	2.5	1.0	1.3	NA	0.8	0.0	0.0
CWII-5	1.5	1.5	1.5	1.5	NA	0.5	1.0	0.2	0.1	0.1	0.1	2.0	1.2	1.0	0.2	0.0
CWII-6	NA	NA	NA	NA	NA	NA	NA	NA	NA	NA	NA	NA	NA	NA	NA	0.1
CWII-7	0.1	0.0	0.0	0.1	NA	0.0	0.1	0.1	0.0	0.0	0.0	0.0	0.0	0.0	0.0	0.0
CWII-8	0.0	0.0	0.0	0.0	NA	0.0	0.0	0.0	0.0	0.0	0.0	1.1	0.0	0.0	0.0	0.0
CWII-9	0.4	0.3	0.3	0.2	NA	0.0	0.3	0.3	0.0	0.0	0.0	0.3	0.5	0.2	0.0	0.0
NW-1	0.0	0.0	0.0	0.0	NA	0.0	0.0	0.0	0.0	0.0	0.0	0.0	0.0	0.0	0.0	0.0
NW-2	0.0	0.0	0.0	0.0	NA	0.0	0.0	0.0	0.0	0.0	0.0	0.0	0.0	0.0	0.0	0.0
NW-3	0.0	0.0	0.0	0.0	NA	0.0	0.0	0.0	0.0	0.0	0.0	0.0	0.0	0.0	0.0	0.0
NW-4	0.0	0.0	0.0	0.0	NA	0.0	0.0	0.0	0.0	0.0	0.0	0.0	0.0	0.0	0.0	0.0
NW-5	0.0	0.0	0.0	0.0	NA	0.0	0.0	0.0	0.0	0.0	0.0	0.0	0.0	0.0	0.0	0.0
NW-6	0.0	0.0	0.0	0.0	NA	0.0	0.0	0.0	0.0	0.0	0.0	0.0	0.0	0.0	0.0	0.0
Ext-1	0.0	0.0	0.0	0.0	NA	0.0	0.0	0.0	0.0	0.0	0.0	0.0	0.0	0.0	0.0	0.0
Ext-2	0.0	0.0	0.1	0.0	NA	0.0	0.0	0.0	0.0	0.1	0.0	0.0	0.0	0.0	0.0	0.0
Ext-3	0.9	0.0	0.5	0.7	NA	0.6	0.7	1.0	0.2	1.1	0.5	0.2	0.7	0.0	0.0	0.0
Ext-4	0.1	0.0	0.0	0.0	NA	0.2	0.2	0.2	0.0	0.3	0.2	0.0	0.2	0.0	0.0	0.0
Ext-5	0.0	0.0	0.0	0.0	NA	0.1	0.0	0.0	0.0	0.0	0.0	0.1	0.0	0.0	0.0	0.0
N-1	0.0	NA	NA	NA	NA	NA	NA	NA	NA	NA	NA	NA	NA	NA	NA	0.0
N-2	0.0	0.0	0.0	0.0	NA	0.0	0.0	0.0	0.0	0.0	0.0	0.0	0.0	0.0	0.0	0.0
N-3	0.0	0.0	0.0	0.0	NA	0.0	0.0	0.0	0.0	0.0	0.0	0.0	0.0	0.0	0.0	0.0
N-4	0.0	0.0	0.0	0.0	NA	0.0	0.0	0.0	NA	0.0	0.0	0.0	0.0	0.0	0.0	0.0
N-5	0.0	0.0	0.0	0.0	NA	0.0	NA	0.0	0.0	0.0	0.0	0.0	0.0	0.0	0.0	0.0
N-6	0.1	0.0	0.0	0.0	NA	NA	0.0	0.0	0.1	0.0	0.0	0.0	0.0	0.0	0.0	0.0
BS-1	0.7	0.2	0.5	0.5	NA	0.4	0.3	0.3	0.3	0.4	0.3	0.0	0.2	0.3	0.0	0.0

NA - Not Available

Measured in % Volume

Note: Data reported prior to June 2021 was done by prior consultant

Table 4 (continued)
Historical Landfill Gas Control Well Methane Data
Town of Huntington East Northport Landfill, East Northport, New York
for period of record between January, 2006 to Present

Well	10/13	11/13	12/13	1/14	2/14	3/14	4/14	5/14	6/14	7/14	8/14	9/14	10/14	12/14	3/15	6/15
CWI-4	0.1	0.0	0.0	0.0	0.0	0.0	0.0	0.0	0.1	0.1	0.1	0.0	0.4	0.1	0.0	0.1
CWI-5	0.3	0.1	0.3	0.2	0.5	0.6	0.2	0.1	0.3	0.2	0.2	0.2	0.4	0.6	0.3	0.4
CWI-6	0.2	0.3	0.2	0.1	0.2	0.4	0.0	0.3	0.3	0.3	0.2	0.1	0.2	0.7	0.3	0.6
CWI-7	0.5	0.5	0.3	0.2	0.3	0.4	0.3	0.5	0.6	0.7	0.7	0.6	N/A	1.0	1.0	0.5
CWII-1	3.5	3.8	5.0	3.1	2.5	2.8	3.4	3.5	4.0	3.0	3.5	2.2	2.5	4.4	4.0	1.1
CWII-2	0.7	1.0	1.0	0.7	1.2	1.8	0.5	1.0	1.2	1.1	0.8	0.4	0.6	1.4	2.0	2.0
CWII-3	1.7	1.5	1.7	1.0	2.0	2.1	1.3	2.0	2.5	1.7	2.2	0.5	1.1	2.2	1.5	3.1
CWII-4	1.1	1.0	2.3	1.5	0.0	0.0	1.5	1.4	1.0	2.0	1.5	0.7	1.0	1.5	0.5	3.3
CWII-5	0.3	0.2	0.1	0.0	0.0	0.0	0.1	0.4	0.5	1.2	0.5	0.2	1.3	0.2	0.1	0.3
CWII-6	0.7	0.6	N/A	N/A	N/A	N/A	N/A	N/A	N/A	N/A	N/A	N/A	N/A	N/A	0.1	NA
CWII-7	0.1	0.1	0.1	0.0	0.0	0.0	0.0	0.0	0.0	0.1	0.0	0.0	0.2	0.1	0.2	0.1
CWII-8	0.0	0.0	0.0	0.0	0.0	0.0	0.0	0.0	0.0	0.0	0.0	0.0	0.2	0.1	1.0	0.0
CWII-9	0.2	0.2	0.1	0.0	0.0	0.0	0.1	0.2	0.2	0.4	0.3	0.2	0.3	0.1	0.7	0.2
NW-1	0.0	0.0	0.0	0.0	0.0	0.0	0.0	0.0	0.0	0.0	0.0	0.0	0.0	0.0	0.0	0.0
NW-2	0.0	0.0	0.0	0.0	0.0	0.0	0.0	0.0	0.0	0.0	0.0	0.0	0.0	0.0	0.0	0.0
NW-3	0.0	0.0	0.0	0.0	0.0	0.0	0.0	0.0	0.0	0.0	0.0	0.0	0.0	0.0	0.0	0.0
NW-4	0.0	0.0	0.0	0.0	0.0	0.0	0.0	0.0	0.0	0.0	0.0	0.0	0.0	0.0	0.0	0.0
NW-5	0.0	0.0	0.0	0.0	0.0	0.0	0.0	0.0	0.0	0.0	0.0	0.0	0.0	0.0	0.0	0.0
NW-6	0.0	0.0	0.0	0.2	0.0	0.0	0.0	0.0	0.0	0.0	0.0	0.0	0.0	0.0	0.0	0.0
Ext-1	0.0	0.0	0.0	0.1	0.0	0.0	0.0	0.0	0.0	0.0	0.0	0.0	0.0	0.0	0.0	0.0
Ext-2	0.1	0.0	0.0	0.1	0.0	0.0	0.0	0.0	0.1	0.1	0.0	0.0	0.1	0.4	0.2	0.2
Ext-3	1.0	0.1	0.7	0.0	0.1	0.2	0.5	0.7	0.5	0.1	0.1	0.0	0.0	0.2	0.2	1.7
Ext-4	0.2	0.2	0.2	0.1	0.0	0.0	0.2	0.2	0.1	0.0	0.0	0.1	0.0	0.2	0.0	0.0
Ext-5	0.1	0.1	0.0	0.0	0.0	0.0	0.0	0.0	0.0	0.0	0.0	0.0	0.0	0.0	0.0	0.0
N-1	0.0	0.0	N/A	N/A	N/A	N/A	N/A	N/A	N/A	N/A	N/A	N/A	N/A	N/A	0.0	NA
N-2	0.0	0.0	0.1	0.0	0.0	0.0	0.0	0.0	0.0	0.0	0.0	0.0	0.0	0.0	0.1	0.0
N-3	0.0	0.0	0.0	0.0	0.0	0.0	0.0	0.0	0.0	0.0	0.0	0.0	0.0	0.0	0.0	0.0
N-4	0.0	0.0	0.0	0.0	N/A	0.0	0.0	0.0	0.0	0.0	0.0	0.0	0.0	0.0	0.0	0.0
N-5	0.0	0.0	0.0	0.0	0.0	0.0	0.0	0.0	0.0	0.0	0.0	0.0	0.0	0.0	0.1	0.0
N-6	0.2	0.1	0.1	0.0	N/A	0.0	0.0	0.0	0.0	0.0	0.0	0.0	0.0	0.0	0.1	0.1
BS-1	0.2	0.2	0.4	0.2	0.3	0.1	0.2	0.3	0.2	0.4	0.3	0.2	0.3	0.2	0.0	0.5

NA - Not Available

Measured in % Volume

Note: Data reported prior to June 2021 was done by prior consultant

Table 4 (continued)
Historical Landfill Gas Control Well Methane Data
Town of Huntington East Northport Landfill, East Northport, New York
for period of record between January, 2006 to Present

Well	9/15	12/15	3/16	6/16	9/16	12/16	3/17	6/17	9/17	12/17	3/18	6/18	9/18	12/18	3/19	6/19
CWI-4	0.2	0.1	0.0	0.0	0.0	0.0	0.0	0.1	0.0	0.0	0.0	0.0	0.0	0.0	0.0	0.0
CWI-5	0.4	0.5	0.3	0.3	0.1	0.0	0.0	0.2	0.4	0.1	0.0	0.0	0.2	0.0	0.0	0.0
CWI-6	0.3	NA	0.6	0.8	0.4	0.0	0.1	0.3	0.4	0.2	0.2	0.1	0.1	0.0	0.0	0.3
CWI-7	0.6	0.7	0.3	0.7	1.1	0.8	0.3	0.5	0.4	0.1	0.6	0.3	0.3	0.0	0.0	0.4
CWII-1	3.7	3.0	5.2	2.5	3.2	3.0	2.1	1.5	2.0	1.4	1.5	1.4	1.5	0.0	0.0	1.4
CWII-2	0.8	0.6	3.5	0.2	0.0	0.2	0.1	0.1	0.4	0.4	1.0	0.6	0.8	0.0	0.0	0.3
CWII-3	1.6	2.0	4.0	1.1	2.0	3.0	3.6	2.1	2.5	2.0	1.9	2.9	3.1	0.0	0.0	1.3
CWII-4	1.0	4.5	2.5	1.0	1.1	0.0	1.2	1.0	1.2	1.0	0.5	1.0	1.0	0.0	0.0	0.9
CWII-5	0.4	0.2	0.1	0.2	0.2	0.0	0.0	0.1	0.3	0.0	0.0	0.0	0.0	0.0	0.0	0.1
CWII-6	0.7	0.0	0.0	0.2	0.0	0.0	0.0	0.1	NA	NA	NA	NA	NA	NA	NA	NA
CWII-7	0.1	0.0	0.0	NA	0.0	0.0	0.0	0.0	0.0	0.0	0.0	0.0	NA	NA	0.0	0.9
CWII-8	0.0	0.1	0.0	0.0	0.0	0.0	0.0	0.0	0.0	0.0	0.0	0.0	0.0	0.0	0.0	0.0
CWII-9	0.2	0.0	0.0	0.1	0.1	0.0	0.0	0.0	0.2	0.0	0.0	0.0	0.0	0.0	0.0	0.0
NW-1	0.0	0.0	0.0	0.0	0.0	0.0	0.0	0.0	0.0	0.0	0.0	0.0	0.0	0.0	0.0	0.0
NW-2	0.0	0.0	0.0	0.0	0.0	0.0	0.0	0.0	0.0	0.0	0.0	0.0	0.0	0.0	0.0	0.0
NW-3	0.0	0.0	0.0	0.0	0.0	0.0	0.0	0.0	0.0	0.0	0.0	0.0	0.0	0.0	0.0	0.0
NW-4	0.0	0.0	0.0	0.0	0.0	0.0	0.0	0.0	0.0	0.0	0.0	0.0	0.0	0.0	0.0	0.0
NW-5	0.0	0.0	0.0	0.0	0.0	0.0	0.0	0.0	0.0	0.0	0.0	0.0	0.0	0.0	0.0	0.0
NW-6	0.0	0.0	0.0	0.0	0.0	0.0	0.0	0.0	0.0	0.0	0.0	0.0	0.0	0.0	0.0	0.0
Ext-1	0.1	0.1	0.0	0.0	0.0	0.0	0.0	0.0	NA	0.0	0.0	0.0	0.0	0.0	0.0	0.0
Ext-2	0.1	0.2	0.1	0.1	0.0	0.0	0.1	0.0	NA	0.0	0.0	0.0	0.0	0.0	0.0	0.0
Ext-3	1.2	2.0	0.2	0.1	0.4	0.3	0.5	0.0	NA	0.0	0.0	0.0	0.0	0.0	0.0	0.0
Ext-4	0.1	0.4	0.3	0.2	0.1	0.0	0.1	0.0	0.1	0.0	0.0	0.0	0.0	0.0	0.0	0.0
Ext-5	0.1	0.1	0.1	0.0	0.1	0.1	0.0	0.1	0.0	0.0	0.0	0.0	0.0	0.0	0.0	0.0
N-1	0.0	0.0	0.0	0.0	0.0	NA	NA	NA	NA	0.0	NA	NA	NA	0.0	0.0	NA
N-2	0.0	0.0	0.0	0.0	0.0	0.0	0.0	0.0	0.0	0.0	0.0	0.0	NA	0.0	0.0	0.0
N-3	0.0	0.0	0.0	0.0	0.0	NA	0.0	0.0	0.0	0.0	0.0	0.0	0.0	0.0	0.0	0.0
N-4	0.0	0.0	0.0	0.0	0.0	0.0	0.0	0.0	0.0	0.0	0.0	0.0	0.0	0.0	0.0	0.0
N-5	0.0	0.0	0.0	0.0	0.0	0.0	0.0	0.0	0.1	0.0	0.0	0.0	0.1	0.0	0.0	0.0
N-6	0.0	0.0	0.0	0.0	0.0	0.0	0.0	0.0	0.05	0.0	0.0	0.0	0.00	0.0	0.0	0.0
BS-1	0.7	0.5	0.5	0.2	0.1	0.0	0.0	0.0	0.1	0.0	0.0	0.0	0.0	0.0	0.0	0.0

NA - Not Available

Measured in % Volume

Note: Data reported prior to June 2021 was done by prior consultant

Table 4 (continued)
Historical Landfill Gas Control Well Methane Data
Town of Huntington East Northport Landfill, East Northport, New York
for period of record between January, 2006 to Present

Well	9/19	12/19	3/20	6/20	9/20	12/20	1/21	6/21	9/21	11/21						
CWI-4	0.0	0.1	0.1	0.0	0.0	0.0	0.0	0.4	0.1	0.1						
CWI-5	0.3	0.3	0.2	0.0	0.0	0.0	0.0	0.4	0.2	0.4						
CWI-6	0.2	0.2	0.2	0.1	0.1	0.1	0.1	0.3	0.2	0.3						
CWI-7	0.3	0.5	0.4	0.1	0.1	0.1	0.1	0.4	0.2	0.4						
CWII-1	1.1	2.0	2.1	1.1	1.2	0.8	0.9	1.9	0.7	2.0						
CWII-2	0.2	0.3	0.4	0.0	0.0	0.0	0.0	0.1	0.0	0.1						
CWII-3	0.9	2.9	3.0	1.5	2.5	2.1	0.7	1.8	0.0	1.0						
CWII-4	0.7	0.0	0.0	0.0	0.0	0.0	0.0	1.1	0.1	0.8						
CWII-5	0.3	0.0	0.0	0.0	0.0	0.0	0.0	0.2	0.0	0.0						
CWII-6	0.3	NA	NA	NA	NA	NA	NA	NA	0.1	0.0						
CWII-7	NA	NA	0.0	0.0	0.0	0.0	0.0	0.0	0.0	0.0						
CWII-8	0.0	0.0	0.0	0.0	0.0	0.0	0.0	0.0	0.0	0.0						
CWII-9	0.1	0.0	0.0	0.0	0.0	0.0	0.0	0.0	0.0	0.0						
NW-1	0.3	0.1	0.1	0.0	0.0	0.0	0.0	0.0	0.0	0.0						
NW-2	0.0	0.1	0.1	0.0	0.0	0.0	0.0	0.0	0.0	0.0						
NW-3	0.0	0.1	0.1	0.0	0.0	0.0	0.0	0.0	0.0	0.0						
NW-4	0.1	0.1	0.0	0.0	0.0	0.0	0.0	0.0	0.0	0.1						
NW-5	0.1	0.0	0.0	0.0	0.0	0.0	0.0	0.0	0.0	0.0						
NW-6	0.1	0.0	0.0	0.0	0.0	0.0	0.0	0.0	0.0	0.1						
Ext-1	0.0	0.0	0.0	0.0	0.0	0.0	0.0	0.0	0.0	0.0						
Ext-2	0.0	0.0	0.0	0.0	0.0	0.0	0.0	0.0	0.0	0.0						
Ext-3	0.1	0.6	0.5	0.2	0.1	0.0	0.0	0.0	0.0	0.0						
Ext-4	0.0	0.1	0.1	0.0	0.0	0.0	0.0	0.0	0.0	0.0						
Ext-5	0.0	0.0	0.0	0.0	0.0	0.0	0.0	0.0	0.0	0.0						
N-1	0.0	0.0	0.0	0.0	0.0	0.0	0.0	0.0	0.0	0.0						
N-2	0.0	0.0	0.0	0.0	0.0	0.0	0.0	0.0	0.0	0.0						
N-3	0.0	0.0	0.0	0.0	0.0	0.0	0.0	0.0	0.0	0.0						
N-4	0.0	0.0	0.0	0.0	0.0	0.0	0.0	0.0	0.0	0.0						
N-5	0.0	0.0	0.0	NA	0.0	0.0	0.0	0.0	0.0	0.0						
N-6	0.0	0.1	0.1	0.0	0.0	0.0	0.0	0.0	0.0	0.0						
BS-1	0.2	0.1	0.1	0.1	0.1	0.1	0.0	0.3	0.2	0.2						

NA - Not Available

Measured in % Volume

Note: Data reported prior to June 2021 was done by prior consultant

J:_HazWaste\5629 (East Northport Landfill)\Monitoring Reports\Landfill Gas Monitoring\2021Q4\Appendicies

APPENDIX E

TABLE 5 – HISTORICAL LANDFILL GAS CONTROL WELL VACUUM DATA

Table 5
Historical Landfill Gas Control Well Vacuum Data
East Northport Landfill, East Northport, New York
for period of record between January, 2006 to Present

Well	1/06	2/06	3/06	4/06	5/06	6/06	7/06	8/06	9/06	10/06	11/06	12/06	1/07	2/07	3/07	4/07	5/07	6/07	7/07
CWI-4	-2.9	-2.6	-2.6	-3.0	-2.6	-0.1	-3.3	-5.2	-1.2	-2.8	-3.9	-4.2	-3.0	-3.6	-3.0	-3.0	-2.8	-2.8	-2.6
CWI-5	-3.3	-3.1	-3.2	-2.6	-2.8	0.0	-2.8	-1.9	-3.4	-2.3	-4.4	-4.5	-3.4	-3.6	-3.2	-3.2	-2.9	-2.9	-2.7
CWI-6	-3.5	-3.1	-3.0	-3.0	-2.9	-0.3	-4.0	-6.4	-2.9	-2.9	-4.7	-4.3	-3.5	-3.7	-3.2	-3.2	-3.0	-2.9	-2.7
CWI-7	-3.0	-3.0	-2.8	-2.8	-2.8	-0.4	-2.8	-2.4	-3.1	-2.8	-4.5	-4.1	-3.3	NA	-3.0	-2.9	-2.8	-2.7	-2.5
CWII-1	-3.1	-3.0	-3.0	-2.9	-2.7	0.0	-3.2	-6.3	-2.9	-2.6	-4.3	-4.3	-3.4	-3.4	-2.7	-3.0	-2.7	-2.6	-2.5
CWII-2	-3.0	-2.9	-2.7	-2.8	-2.7	-0.5	-3.5	-5.9	-5.4	-2.6	-4.2	-3.9	-3.3	-3.4	-2.6	-2.8	-2.6	-2.5	-2.4
CWII-3	-3.0	-2.9	-2.9	-2.7	-2.5	0.0	-2.6	-6.8	-0.6	-2.7	-4.3	-4.1	-3.1	-3.4	-2.7	NA	NA	-2.6	-2.4
CWII-4	-2.8	-2.8	-2.4	-2.6	-2.7	-0.9	-3.2	-6.8	-2.7	-2.6	-5.0	-4.0	-3.1	-3.7	-2.7	-2.6	-2.5	-2.5	-2.3
CWII-5	-2.8	-2.5	-2.6	-2.7	-2.1	0.0	-2.3	-7.0	-2.6	-2.6	-0.3	-4.2	-3.2	-3.6	-2.6	-2.7	-2.5	-2.4	-2.3
CWII-6	-1.4	-1.4	-1.5	-1.6	-1.9	-0.1	-1.0	-0.2	-1.7	-1.4	-1.7	-2.3	-2.0	-0.2	-1.7	-1.6	-1.7	-1.7	-1.6
CWII-7	-1.2	-1.0	-1.1	-0.7	-1.4	-0.2	-0.8	-0.2	-1.3	-1.1	-1.5	-1.7	-1.7	-1.3	-1.4	-1.4	-1.2	-1.3	-1.1
CWII-8	0.0	0.0	-0.2	0.0	0.0	-0.1	0.0	0.0	0.0	0.0	0.0	0.0	-0.1	-0.1	0.0	-0.1	-0.1	-0.1	0.0
CWII-9	-0.9	-0.6	-0.7	-1.0	-0.8	-0.9	-0.6	-0.2	-0.9	-0.8	-0.9	-1.2	-1.4	-1.0	-1.0	-1.1	-0.9	-0.9	-0.8
NW-1	-2.8	-2.8	-2.8	-2.6	-2.2	-2.4	-3.2	-4.0	-3.7	-2.5	-3.2	-3.9	-2.9	-3.4	-3.0	-2.9	-2.8	-2.6	-2.1
NW-2	-3.3	-2.9	-2.7	-2.6	-2.9	-2.7	-3.4	-4.5	-3.4	-3.2	4.2	-4.5	-3.3	-3.7	-3.2	-3.2	-3.1	-3.9	-2.8
NW-3	-2.8	-2.9	-2.8	-2.7	-2.7	-2.8	-3.2	-4.0	-3.2	-2.8	-4.0	-4.0	-2.3	-3.4	-2.9	-3.0	-2.7	-2.6	-2.6
NW-4	-2.9	-3.0	-3.0	-3.0	-2.7	-2.6	-2.4	-3.6	-2.8	-2.6	-4.0	-3.6	-2.8	-3.3	-2.6	-2.9	-2.6	-2.4	-2.4
NW-5	-2.3	-2.9	-2.6	-2.6	-1.2	-2.5	-2.2	-2.6	-2.3	-2.1	-3.6	-2.9	-2.3	-3.0	-2.2	-2.6	-2.2	-1.9	-2.1
NW-6	-2.2	-3.0	-2.9	-3.0	-1.6	-2.1	-2.8	-2.8	-2.5	-2.8	-3.1	-3.0	-2.3	-2.6	-2.3	-1.6	-2.3	-2.1	-2.0
Ext-1	0.0	0.0	0.0	-0.2	-0.2	-0.3	0.0	-0.7	-0.1	-0.1	-3.6	-3.4	-2.7	-0.1	0.0	0.0	0.0	-1.7	-0.1
Ext-2	-0.6	-0.8	-0.9	-0.8	-0.8	-0.6	-0.1	-3.0	-0.9	-0.7	-3.4	NA	-2.1	-1.1	-0.8	-0.9	-0.9	-2.1	-0.9
Ext-3	-2.1	-2.8	-2.7	-2.6	-2.2	-1.9	-0.5	-3.3	-2.3	-2.1	-3.3	-3.2	-2.3	-2.9	-2.2	-2.5	-2.3	-2.3	-2.1
Ext-4	-2.0	-1.9	-1.8	-1.6	-2.1	-2.0	-0.6	-2.0	-2.0	-2.1	-3.2	-3.5	-2.0	-2.7	-2.2	-2.3	-2.1	-0.9	-2.0
Ext-5	-0.8	-1.6	-1.4	-1.6	-1.7	-1.5	-0.2	-0.1	-1.6	-1.6	-2.4	-2.6	-2.0	-2.3	-2.0	-2.1	-1.9	-0.1	-1.7
N-1	-0.3	-0.2	-0.4	-0.4	-0.6	0.0	-1.0	-2.8	-1.5	-0.2	-0.2	-0.2	0.0	0.1	0.0	-0.2	-0.1	0.0	-0.1
N-2	-0.4	-0.4	-0.8	-0.7	NA	0.0	-0.1	-0.9	-0.3	-0.6	-0.5	-0.4	-0.3	-0.4	-0.4	-0.6	-0.3	-0.3	-0.5
N-3	-0.1	-0.1	0.0	-0.2	-0.1	-0.1	0.0	-0.3	-0.1	-0.1	-0.1	-0.2	0.0	0.0	-0.1	-0.1	-0.1	-0.1	-0.1
N-4	0.0	0.0	0.0	-0.1	-0.1	-0.1	0.0	-0.2	-0.1	-0.2	-0.1	-0.1	0.0	-0.2	-0.8	-0.1	-0.1	0.0	-0.1
N-5	-0.1	-0.1	0.0	-1.0	-0.1	-0.1	-0.1	-0.2	-0.2	-0.1	-0.1	-0.2	0.0	-0.2	-0.1	-0.1	-0.1	-0.1	-0.1
N-6	NA	-0.8	-0.1	-0.2	NA	0.0	-1.1	-0.2	-0.9	-1.0	NA	NA	NA	NA	NA	-1.1	-0.8	-0.9	-0.9
BS-1	-4.9	-4.2	-5.1	-4.6	-4.6	-3.1	-8.5	-10.1	-6.1	-5.1	-7.3	-7.2	4.0	-5.6	-5.0	-5.1	-4.8	-7.3	-4.3

Measured in inches of H2O

NA - Not Available

Note: Data reported prior to June 2021 was done by prior consultant

Table 5 (continued)
Historical Landfill Gas Control Well Vacuum Data
East Northport Landfill, East Northport, New York
for period of record between January, 2006 to Present

Well	8/07	9/07	10/07	11/07	12/07	1/08	2/08	3/08	4/08	5/08	6/08	7/08	8/08	9/08	10/08	11/08	12/08	1/09	2/09
CWI-4	-2.6	-2.5	-2.5	-3.1	-3.0	-2.9	-3.7	-3.7	-1.8	-3.4	-1.8	-2.1	-1.6	-1.9	-1.2	-1.4	0.0	-3.0	-2.8
CWI-5	-2.7	-2.8	-2.7	-3.0	-3.5	-3.1	-3.7	-3.5	-3.0	-2.9	-1.8	-2.3	-1.9	-2.1	-1.3	-1.4	0.0	-3.4	-2.8
CWI-6	-2.6	-2.2	-2.4	-2.9	-3.4	-3.2	-3.3	-3.4	-3.1	-2.9	-1.9	-2.4	-1.8	-2.1	-1.3	-1.2	-0.1	-3.6	-3.0
CWI-7	-2.5	-2.5	-2.4	-2.5	-3.1	-3.0	-3.7	-3.3	-2.7	-2.3	-1.8	-2.4	-1.8	-2.0	-1.1	-0.6	NA	-3.6	-2.9
CWII-1	-2.3	-1.5	-2.4	-2.4	-3.0	-2.9	-4.1	-3.2	-2.6	-2.6	-1.7	-2.4	-1.7	-2.0	-1.2	-1.1	-0.1	-3.5	-2.9
CWII-2	-2.3	-2.3	-2.4	-2.5	-3.5	-2.9	-3.2	-3.6	-2.6	-2.5	-1.6	-2.4	-1.7	-2.0	-1.2	-1.6	-0.1	-3.0	-2.8
CWII-3	-2.3	-2.4	-2.3	-2.4	-2.9	-2.9	-3.7	-3.1	-3.1	-2.3	-1.7	-2.7	-1.6	-2.0	-1.1	-0.9	-0.1	-3.6	-2.7
CWII-4	-3.2	-2.1	-2.2	-2.3	-3.6	-2.9	-1.8	-3.5	-2.5	-2.1	-1.6	-2.4	-1.6	-1.9	-1.1	-1.1	NA	-3.4	-2.7
CWII-5	-2.2	-2.4	-2.2	-2.6	-3.5	-2.9	-3.0	-3.1	-2.8	-2.4	-1.6	-2.5	-1.6	-1.9	-1.1	-1.0	-0.2	-3.5	-2.7
CWII-6	-1.6	-1.5	-1.5	-1.3	-0.2	-2.0	-1.2	-2.2	-1.6	-1.7	-1.2	0.0	-1.6	-1.6	-0.7	-0.8	NA	0.0	-1.6
CWII-7	-1.2	-1.1	-1.2	-1.1	-0.3	-1.5	-1.2	-1.7	-1.2	-1.3	-0.9	0.0	-1.2	-1.1	-0.7	-0.6	-0.2	0.0	-1.2
CWII-8	0.0	0.0	-0.1	0.0	0.0	0.0	-0.1	0.0	0.0	-0.1	-0.1	-0.1	0.0	0.0	-0.1	0.0	-0.1	0.0	0.0
CWII-9	-0.2	-0.9	-0.9	-0.9	-0.6	-1.1	-0.2	-0.2	-0.9	-0.9	-0.6	0.0	-0.6	-0.8	-0.6	-0.5	-0.2	0.0	-0.9
NW-1	-2.6	-2.4	-2.5	-2.5	-2.9	-2.8	-3.0	-3.1	-2.7	-2.8	-1.6	-1.9	-1.8	-1.9	-1.1	-1.2	-1.6	-2.9	-2.6
NW-2	-2.8	-1.7	-2.9	-3.1	-3.3	-3.1	-3.4	-3.8	-2.9	-3.2	-2.1	-2.4	-1.7	-2.0	-1.1	-0.8	-1.4	-3.1	-3.4
NW-3	-2.5	-2.0	-2.4	-2.5	-2.8	-2.7	-4.3	-3.1	-2.7	-2.1	-1.8	-2.1	-1.3	-1.8	-1.1	-0.7	-1.0	-2.7	-2.7
NW-4	-2.2	-2.2	-2.3	-2.2	-2.6	-2.4	-3.4	-2.8	-3.1	-2.9	-1.6	-1.9	-1.5	-1.7	-1.0	-1.0	-0.9	-2.3	-2.4
NW-5	-1.8	-1.8	-1.9	-2.0	-2.1	-2.1	-2.5	-2.2	-2.2	-0.9	-1.4	-1.6	-1.2	-1.5	-0.8	-0.6	-1.2	-2.1	-2.0
NW-6	-1.8	-1.8	-1.9	-2.2	-2.2	-2.1	-2.4	-2.4	-2.1	-2.1	-1.3	-1.6	-1.2	-1.4	-0.9	-0.7	-1.3	-2.3	-2.0
Ext-1	-0.1	0.0	0.0	-0.1	-0.1	-2.1	-0.1	-0.1	0.0	-0.1	0.0	-0.1	-1.1	0.0	0.0	-0.1	-0.4	0.0	-0.1
Ext-2	-0.7	-0.8	-0.7	-0.7	-0.9	-0.9	-1.0	-1.0	-0.9	-2.2	-0.9	-0.7	-1.0	-0.5	-0.5	-0.4	-0.7	-0.9	-0.8
Ext-3	-2.1	-2.0	-1.9	-1.9	-2.3	-2.2	-2.6	-2.7	-2.2	-2.2	-1.6	-1.7	-0.6	-1.4	-0.9	-0.7	-0.3	-2.1	-2.0
Ext-4	-1.9	-1.9	-2.2	-1.9	-2.2	-2.1	-2.4	-2.3	-1.9	-2.0	-1.4	-1.1	-1.7	-1.5	-0.9	-0.6	-1.1	-2.0	-1.8
Ext-5	-1.6	-1.5	-1.7	-1.5	-1.9	-1.8	-2.0	-2.1	-1.8	-1.8	-1.1	-0.4	-0.9	-1.2	-0.8	-1.0	-1.4	-1.8	-1.5
N-1	-0.3	-0.2	-0.2	-0.2	-0.2	-0.1	-0.3	-0.2	-0.2	-0.1	-0.3	-0.2	-0.2	-0.2	NA	NA	NA	NA	-0.2
N-2	-0.6	-0.5	-0.7	-0.6	-0.6	-0.6	NA	-0.4	-0.6	-0.7	-0.5	-0.5	-0.6	-0.5	-0.3	-0.5	-0.3	-0.7	-0.7
N-3	-0.2	-0.1	-0.2	0.0	-0.2	-0.1	-0.2	-0.1	-0.1	-0.1	-0.1	-0.3	-0.1	-0.1	-0.2	-0.1	-0.2	-0.2	-0.1
N-4	-0.1	-0.1	-0.1	0.0	-0.2	-0.1	-0.2	0.0	-0.1	-0.1	-0.1	-0.1	-0.1	-0.1	-0.2	-0.1	NA	-0.2	-0.1
N-5	-0.1	-0.1	-0.2	0.0	-0.1	-0.1	-0.1	-0.1	-0.1	-0.2	-0.2	-0.1	-0.2	-0.1	-0.2	-0.1	NA	-0.2	-0.1
N-6	-0.9	-0.8	-0.9	NA	NA	NA	NA	NA	NA	NA	NA	NA	NA	-0.8	NA	NA	NA	-0.1	-0.8
BS-1	-5.6	0.3	-4.4	-4.7	-5.1	-4.5	-5.0	-5.2	-4.2	-4.8	-2.8	-3.2	0.1	-3.0	-1.7	-21.7	0.1	-4.1	0.5

Measured in inches of H2O

NA - Not Available

Note: Data reported prior to June 2021 was done by prior consultant

Table 5 (continued)
Historical Landfill Gas Control Well Vacuum Data
East Northport Landfill, East Northport, New York
for period of record between January, 2006 to Present

Well	3/09	4/09	5/09	6/09	7/09	8/09	9/09	10/09	11/09	12/09	1/10	2/10	3/10	4/10	5/10	6/10	7/10	8/10	9/10
CWI-4	-2.5	-2.6	-2.6	-2.9	-2.5	-1.8	-2.3	-2.1	-2.0	-0.75	-0.73	NA	-0.98	-0.60	-0.63	-0.65	-0.76	-0.75	-0.76
CWI-5	-2.7	-1.9	-1.9	-3.3	-2.6	-2.6	-2.4	-2.3	-2.0	-8.60	-1.00	-0.78	-1.13	-0.64	-0.69	-0.70	-0.82	-0.82	-0.82
CWI-6	-2.8	-2.8	-2.8	-3.3	-2.5	-2.6	-2.4	-2.1	-1.8	-8.70	NA	-0.76	-1.18	-0.57	-0.68	-0.69	NA	-0.80	-0.82
CWI-7	-2.7	-2.0	-2.0	-3.4	-2.5	-2.4	-2.3	NA	NA	NA	NA	NA	NA	NA	NA	NA	NA	NA	NA
CWII-1	0.0	-2.7	-2.7	-3.2	-2.5	-2.3	-2.1	-2.0	-2.1	-2.00	-0.84	-0.71	-1.16	-0.59	-0.63	-0.62	-0.71	-0.67	-0.71
CWII-2	-2.5	-2.1	-2.1	-3.0	-2.9	-2.2	-2.1	-1.9	-2.0	-1.90	-0.81	-0.68	-1.12	-0.56	-0.59	-0.60	-0.69	-0.67	-0.70
CWII-3	-2.6	-3.0	-3.0	-3.0	-2.6	-2.4	-2.1	-1.9	-1.8	-1.90	-0.86	-0.69	-1.17	-0.58	-0.60	-0.61	-0.04	-0.69	-0.72
CWII-4	-2.6	-3.1	-3.1	-4.0	-2.6	-2.0	-2.1	-2.8	-2.5	-2.34	-0.84	-0.68	-0.12	-0.57	-0.58	-0.60	-0.68	-0.66	-0.70
CWII-5	-2.6	-2.5	-2.5	-3.4	-2.4	-2.2	-2.1	-1.8	-1.6	-1.81	-0.84	-0.68	NA	-0.57	-0.59	-0.61	-0.69	-0.67	-0.71
CWII-6	-1.9	NA	NA	NA	NA	NA	-1.3	NA	NA	NA	NA	NA	NA	NA	NA	NA	NA	NA	NA
CWII-7	-1.5	-2.2	-2.2	0.0	-1.4	-1.5	-1.2	-1.0	-1.0	-1.11	0.00	-0.35	-0.02	-0.32	-0.32	-0.35	-0.45	-0.43	-0.46
CWII-8	0.0	-0.2	-0.2	0.0	-0.1	-0.1	0.0	0.0	0.0	-0.20	0.00	0.00	0.00	0.00	0.00	-0.02	-0.30	0.00	-0.03
CWII-9	-1.0	-1.0	-1.0	-0.1	-1.0	-1.0	-0.9	-0.6	-0.3	-0.20	-0.03	0.00	-0.02	-2.20	-0.04	-0.26	0.00	-0.29	-0.10
NW-1	-2.3	-2.6	-2.6	-2.7	-2.3	-3.4	-2.0	-2.0	-1.8	NA	-0.73	-0.23	-0.97	-0.59	-0.63	-0.63	-0.76	-0.50	-0.75
NW-2	-2.7	-2.8	-2.8	-2.3	-2.6	-2.6	-2.4	-2.1	-2.0	-0.60	-0.80	-0.42	-1.08	-0.64	-0.70	-0.53	-0.53	-0.85	-0.83
NW-3	-2.3	-2.2	-2.2	-2.7	-2.3	-2.2	-2.2	0.0	0.0	0.00	-0.72	-0.40	-1.01	-0.58	-0.62	-0.53	-0.76	-0.77	-0.72
NW-4	-2.1	-2.2	-2.2	-2.5	-2.2	-2.1	-2.0	0.0	-0.1	-0.12	-0.65	-0.50	-0.89	-0.54	-0.55	-0.54	-0.68	-0.66	-0.64
NW-5	-1.8	-2.1	-2.1	-2.0	-1.8	-1.8	-1.6	0.0	-0.1	-0.70	-0.56	-0.51	-0.74	-0.43	-0.45	-0.50	-0.55	-0.56	-0.52
NW-6	-1.8	-1.2	-1.2	-2.1	-1.8	-1.9	-1.7	-0.1	0.0	NA	-0.55	-0.39	-0.78	-0.41	-0.46	-0.51	-0.09	-0.59	-0.53
Ext-1	-0.1	-1.0	-1.0	-0.2	-1.6	-1.7	-0.1	0.0	0.0	-0.06	-0.05	0.00	0.02	0.00	-0.01	-0.02	-0.51	-0.02	0.00
Ext-2	-0.8	-0.8	-0.8	-1.0	-1.8	-0.9	-0.7	-0.1	0.0	-0.24	-0.20	-0.20	-0.38	-0.20	-0.21	-0.23	-0.50	-0.26	-0.23
Ext-3	-1.9	-1.2	-1.2	-2.1	-1.9	-0.1	-1.6	-0.1	-0.1	-0.56	-0.54	-0.49	-0.75	-0.44	-0.46	-0.49	-0.57	-0.58	-0.51
Ext-4	-1.9	-1.8	-1.8	-2.0	-0.8	-1.7	-1.4	-0.1	-0.1	-0.57	-0.52	-0.43	-0.74	-0.44	-0.45	-0.48	-0.57	-0.56	-0.47
Ext-5	-1.9	-0.8	-0.8	-1.6	0.0	-1.5	-1.4	-0.1	-0.1	-0.41	-0.46	-0.39	-0.64	-0.39	-0.40	-0.43	-0.50	-0.50	-0.12
N-1	-0.3	-0.3	-0.3	NA	-0.2	-0.2	-0.1	-0.1	NA	-0.72	-0.09	-0.60	NA	0.00	0.00	-0.03	-0.02	-0.05	-0.25
N-2	-0.6	-0.6	-0.6	-0.4	-0.4	-0.5	-0.7	-0.4	-0.5	-0.80	-0.07	-0.04	NA	0.00	-0.02	-0.03	-0.03	-0.05	-0.15
N-3	-0.2	-0.2	-0.2	-0.2	-0.2	-0.2	-0.2	0.0	0.0	-0.73	-0.06	-0.04	-0.08	-0.02	-0.03	-0.03	-0.03	-0.02	-0.04
N-4	-0.1	-0.2	-0.2	-0.1	-0.2	-0.3	-0.2	0.0	0.0	-0.64	-0.06	NA	-0.07	0.00	-0.02	-0.03	-0.02	-0.02	-0.04
N-5	-0.1	-0.2	-0.2	-0.1	-1.0	-0.1	-0.1	0.0	0.0	-0.55	-0.06	-0.05	-0.07	0.00	-0.02	-0.04	-0.02	-0.02	-0.05
N-6	-1.0	-1.2	-1.2	-0.1	-0.2	-1.0	-0.8	NA	NA	-0.53	NA	NA	NA	NA	NA	NA	NA	NA	-0.31
BS-1	-4.1	-3.9	-3.9	-0.3	-4.0	-5.0	-3.9	-4.0	-3.2	-1.21	-1.35	-1.21	-1.56	-1.00	-0.12	-1.12	-1.44	-1.43	-1.43

Measured in inches of H2O

NA - Not Available

Note: Data reported prior to June 2021 was done by prior consultant

Table 5 (continued)
Historical Landfill Gas Control Well Vacuum Data
East Northport Landfill, East Northport, New York
for period of record between January, 2006 to Present

Well	10/10	11/10	1/12	2/12	3/12	4/12	5/12	6/12	7/12	8/12	9/12	10/12	11/12	12/12	1/13	2/13	3/13	4/13	5/13
CWI-4	-0.78	-0.80	-0.97	-0.81	-0.86	-0.86	-1.32	-1.29	-0.61	-0.97	-0.90	NA	-0.86	-0.91	-0.88	-0.66	-1.29	-0.86	-0.70
CWI-5	-0.55	-0.89	-1.12	-0.82	-0.72	-0.72	-1.44	-1.40	-0.66	-1.05	-0.98	NA	-0.98	-1.05	-0.99	-1.14	-1.49	-0.94	-0.78
CWI-6	-0.16	-0.91	-1.16	-0.81	-0.93	-0.93	-1.40	-1.39	-0.66	-1.07	-0.93	NA	-1.02	-1.07	-0.99	-1.19	-1.56	-0.95	-0.77
CWI-7	-0.85	-0.83	-1.10	-0.76	-1.02	-1.02	-1.06	-0.78	-0.62	NA	NA	NA	-0.55	-1.01	-0.84	-1.05	-1.29	-0.73	-0.68
CWII-1	-0.79	-0.77	-0.78	-0.61	-0.71	-0.71	-1.02	-1.09	-0.57	-0.88	-0.71	NA	-0.47	-0.40	-0.23	-1.04	-1.54	-0.32	-0.20
CWII-2	-0.72	-0.76	-1.05	-0.71	-0.91	-0.91	-1.10	-1.07	-0.57	-0.88	-0.91	NA	-0.91	-0.99	-0.86	-1.06	-1.40	-0.83	-0.68
CWII-3	-0.71	-0.76	-1.11	-0.72	-0.69	-0.69	-1.15	-1.18	-0.47	-0.91	-0.99	NA	-0.98	-1.07	-0.90	-1.15	-1.50	-0.86	-0.70
CWII-4	-0.74	-0.77	-1.09	-0.71	-0.94	-0.94	-1.10	-1.06	-0.56	-0.89	-0.95	NA	-0.95	-1.04	-0.88	-1.13	-1.46	-0.85	-0.68
CWII-5	-0.72	-0.77	-1.11	-0.70	-0.89	-0.89	-1.11	-1.07	-0.56	-0.90	-0.98	NA	-0.97	-1.06	-0.89	0.00	-1.51	-0.86	-0.88
CWII-6	-0.73	NA	-0.02	N/A	N/A	N/A	NA	NA	NA	NA	NA	NA	NA	NA	NA	NA	NA	NA	NA
CWII-7	-0.40	-0.44	-0.03	0.00	0.00	0.00	-0.53	-0.50	-0.34	-0.55	-0.03	NA	0.00	-0.03	-0.46	0.00	0.00	0.00	-0.31
CWII-8	-0.02	-0.02	0.00	0.00	-0.09	-0.09	0.00	0.02	0.00	0.00	-0.02	NA	0.00	-0.04	0.00	0.00	0.00	0.00	0.00
CWII-9	-0.29	-0.30	-0.02	0.00	0.00	0.00	-0.35	-0.32	-0.23	-0.36	-0.03	NA	0.00	-0.04	-0.29	0.00	0.00	0.00	-0.22
NW-1	-0.80	-0.79	-0.98	-0.74	-0.76	-0.76	-1.30	-1.30	-0.62	-0.97	-0.85	NA	-0.84	-0.92	-0.90	-0.98	-1.25	-0.87	-0.68
NW-2	-0.88	-0.89	-1.06	-0.81	-0.72	-0.72	-1.52	-1.51	-0.69	-1.11	-0.96	NA	-0.96	-0.99	-1.00	-1.10	-1.40	-0.95	-0.75
NW-3	-0.78	-0.76	-0.93	-0.73	-0.70	-0.70	-1.31	-1.47	-0.61	-0.96	-0.16	NA	-0.84	-0.60	-0.87	-1.11	-1.25	-0.85	-0.69
NW-4	-0.20	-0.69	-0.85	-0.66	-0.61	-0.61	-1.18	-1.18	-0.58	-0.85	-0.83	NA	-0.74	-0.82	-0.82	-1.09	-1.15	-0.78	-0.68
NW-5	-0.55	-0.59	-0.69	-0.54	-0.49	-0.49	-0.91	-0.92	-0.46	-0.69	-0.64	NA	-0.62	-0.68	-0.66	-0.75	-0.89	-0.64	-0.52
NW-6	-0.57	-0.51	-0.73	-0.56	-0.62	-0.62	-0.99	-1.03	-0.54	-0.72	-0.67	NA	-0.63	-0.67	-0.66	-0.04	-0.97	-0.81	-0.55
Ext-1	-0.21	-0.03	0.00	0.00	-0.28	-0.28	-0.61	-0.02	-0.11	-0.61	-0.06	NA	-0.02	-0.09	-0.82	-0.02	-0.04	-0.04	-0.46
Ext-2	0.00	-0.26	-0.28	-0.57	-0.41	-0.41	-0.55	-0.39	-0.22	-0.72	-0.28	NA	-0.26	-0.35	-0.36	-0.29	-0.39	-0.29	-0.53
Ext-3	-0.52	-0.59	-0.76	-0.56	-0.51	-0.51	-0.58	-1.00	-0.49	-0.75	-0.67	NA	-0.64	-0.71	-0.70	-0.80	-1.02	-0.69	-0.20
Ext-4	-0.18	-0.60	-0.74	-0.53	-0.44	-0.44	-0.60	-0.99	-0.49	-0.30	-0.70	NA	-0.62	-0.69	-0.68	-0.24	-0.99	-0.67	-0.40
Ext-5	-0.40	-0.45	-0.61	-0.32	-0.30	-0.30	-0.42	-0.84	-0.44	-0.04	-0.50	NA	-0.56	-0.23	-0.59	-0.34	-0.87	-0.58	-0.32
N-1	-0.33	-0.08	-0.03	0.00	-0.02	-0.02	-0.03	0.20	NA	NA	NA	NA	NA	NA	NA	NA	NA	NA	NA
N-2	-0.15	-0.04	-0.04	N/A	-0.04	-0.04	-0.04	0.00	-0.02	-0.04	-0.09	NA	0.00	-0.07	-0.03	-0.03	-0.03	0.00	-0.04
N-3	-0.02	-0.04	-0.03	0.00	-0.06	-0.06	-0.03	0.00	-0.03	-0.03	-0.06	NA	0.00	-0.05	-0.02	0.00	-0.03	0.00	-0.04
N-4	-0.02	0.00	-0.04	0.00	-0.01	-0.01	0.00	0.00	0.00	-0.04	-0.05	NA	0.00	0.00	0.00	NA	0.00	0.00	-0.03
N-5	-0.02	-0.03	-0.04	0.00	-0.03	-0.03	-0.03	0.00	-0.02	-0.03	-0.05	NA	0.00	NA	-0.03	0.00	-0.03	0.00	-0.03
N-6	-0.29	-0.31	0.00	0.00	-0.26	-0.26	-0.34	-0.32	-0.24	-0.35	-0.04	NA	NA	-0.06	-0.29	0.00	0.00	0.00	-0.22
BS-1	-1.46	-1.55	-1.74	-1.30	-1.13	-1.13	-3.01	-3.11	-1.19	-2.01	-1.59	NA	-1.75	-1.64	-1.71	-1.75	-2.25	-1.52	-1.18

Measured in inches of H2O

NA - Not Available

Note: Data reported prior to June 2021 was done by prior consultant

Table 5 (continued)
Historical Landfill Gas Control Well Vacuum Data
East Northport Landfill, East Northport, New York
for period of record between January, 2006 to Present

Well	6/13	7/13	8/13	9/13	10/13	11/13	12/13	1/14	2/14	3/14	4/14	5/14	6/14	7/14	8/14	9/14	10/14	12/14	3/15
CWI-4	-0.80	-0.82	-1.35	-1.33	-1.39	-1.39	-1.59	-1.64	-1.11	-1.98	-1.13	-0.95	-1.06	-0.62	-0.61	-0.64	-0.92	-1.42	-1.63
CWI-5	-0.88	-1.02	-1.52	-1.54	-1.55	-1.60	-1.91	-1.90	-1.30	-1.72	-1.28	-1.28	-1.19	-0.69	-0.69	-0.70	-1.05	-1.66	-1.97
CWI-6	-0.87	-0.84	-1.50	-1.48	-1.54	-1.59	-2.00	-1.99	-1.36	-1.87	-1.25	-1.02	-1.21	-0.69	-0.76	-0.70	-1.12	-1.76	-2.05
CWI-7	-0.84	-0.79	-1.35	-1.34	-0.84	-0.45	-1.79	-1.81	-1.28	-1.74	-1.14	-1.14	-1.07	-0.63	-0.48	-0.64	N/A	-1.67	-0.05
CWII-1	-0.79	-0.75	-1.36	-1.32	-1.28	-1.41	-1.86	-1.79	-1.33	-1.69	-1.15	-1.16	-1.04	-0.62	-0.63	-0.64	-1.02	-1.67	-2.00
CWII-2	-0.78	-0.73	-1.26	-1.22	-1.22	-1.27	-1.72	-1.70	-1.24	-1.63	-1.09	-1.18	-1.02	-0.60	-0.61	-0.62	-0.97	-1.55	-1.80
CWII-3	-0.80	-0.75	-1.44	-1.29	-1.37	-1.51	-1.88	-1.87	-1.34	-1.55	-1.15	-0.77	-1.05	-0.58	-1.38	-0.64	-0.87	-1.69	-2.01
CWII-4	NA	-0.75	-1.36	-1.21	-1.29	-1.29	-1.85	-1.85	0.00	-0.01	-1.13	-1.15	-1.02	-0.60	-0.55	-0.62	-1.04	-1.66	-0.42
CWII-5	-0.03	-0.73	-1.27	-1.32	-1.29	-1.33	-1.54	-1.89	0.00	0.00	-1.13	-1.27	-1.09	-0.66	-0.62	-0.63	-1.05	-1.70	0.00
CWII-6	NA	NA	NA	-0.71	-0.72	-0.51	N/A	N/A	N/A	N/A	N/A	N/A	N/A	N/A	N/A	N/A	N/A	N/A	0.00
CWII-7	-0.39	-0.45	-0.52	-0.46	-0.54	-0.35	-0.04	0.00	0.00	-0.01	-0.48	-0.30	-0.40	-0.36	-0.39	-0.39	-0.08	-0.05	0.00
CWII-8	0.00	0.00	0.00	0.00	-0.02	0.00	-0.03	0.00	0.00	0.00	0.00	-0.02	0.00	-0.02	-0.02	-0.04	0.00	-0.02	0.00
CWII-9	-0.28	-0.30	-0.32	-0.29	-0.34	-0.29	-0.02	-0.04	0.00	0.00	-0.31	-0.31	0.28	-0.25	-0.28	-0.28	-0.16	-0.04	0.00
NW-1	-0.80	-0.77	-1.36	-1.37	-1.40	-1.56	-1.80	-1.59	-1.18	-1.11	-1.30	-1.29	-1.18	-0.61	-0.68	-0.64	-0.93	-1.46	-1.66
NW-2	-0.89	-0.22	-1.48	-1.22	-1.55	-1.61	-1.84	-1.85	-1.27	-1.42	-1.32	-1.35	-1.27	-0.70	-0.69	-0.64	-1.03	-1.61	-1.60
NW-3	-0.82	-0.54	-1.39	-1.39	-1.44	-1.44	-1.58	-1.73	-1.07	-1.09	-1.14	-1.20	-1.13	-0.62	-0.62	-0.64	-0.93	-1.44	-1.68
NW-4	-0.74	-0.56	-1.25	-1.33	-1.25	-1.27	-1.40	-1.37	-0.95	-1.02	-1.05	-1.11	-1.04	-0.58	-0.57	-0.59	-0.83	-1.26	-1.46
NW-5	-0.74	-0.61	-0.95	-1.22	-1.01	-0.99	-1.10	-1.07	-0.80	-0.98	-0.82	-0.86	-0.82	-0.48	-0.47	-0.50	-0.66	-1.00	-1.07
NW-6	-0.82	-0.59	-1.04	-1.19	-1.08	-1.05	-1.19	-1.19	-0.85	-0.99	-0.85	-0.95	-0.88	-0.50	-0.50	-0.51	-0.58	-1.07	-1.16
Ext-1	0.00	-0.50	-0.98	-1.00	-0.05	-0.21	-0.06	-0.98	-0.04	-0.07	-0.34	-0.05	-0.02	-0.02	-0.03	-0.04	-0.58	-0.11	-0.62
Ext-2	-0.62	-0.42	-0.42	-0.98	-0.40	-0.66	-0.46	-0.95	-0.41	-0.57	-0.37	-0.39	0.37	-0.24	-0.22	-0.23	-0.68	-0.47	-0.79
Ext-3	-0.66	-0.49	-1.06	-0.98	-1.09	-1.09	-1.26	-0.77	-1.01	-1.72	-0.94	-0.97	0.76	-0.52	-0.53	-0.54	-0.67	-1.11	-0.54
Ext-4	-0.64	-0.59	-1.02	-0.96	-1.29	-0.53	-1.22	-1.20	-1.19	-1.28	-0.91	-0.93	0.89	-0.50	-0.55	-0.51	-0.28	-1.07	-0.32
Ext-5	-0.58	-0.44	-0.88	-1.02	-0.92	-0.88	-1.03	-0.98	-0.87	-0.92	-0.24	-0.80	-0.78	-0.44	-0.32	-0.45	-0.03	-0.71	-0.05
N-1	NA	NA	NA	-0.02	-0.04	-0.03	N/A	N/A	N/A	N/A	N/A	N/A	N/A	N/A	N/A	N/A	N/A	N/A	0.00
N-2	-0.06	-0.04	-0.03	-0.02	-0.04	-0.02	-0.09	-0.05	-0.02	0.00	0.00	-0.06	-0.02	-0.05	-0.04	-0.08	-0.04	-0.02	-0.02
N-3	-0.02	-0.03	-0.02	0.00	0.00	-0.02	-0.05	-0.03	0.00	0.00	0.00	-0.04	0.00	-0.02	-0.02	-0.04	-0.02	-0.02	0.00
N-4	-0.04	-0.02	0.00	0.00	0.00	0.00	0.00	-0.02	N/A	0.00	0.00	0.00	0.00	-0.02	-0.03	-0.04	-0.02	-0.01	0.00
N-5	-0.27	-0.03	0.00	0.00	-0.02	-0.02	-0.05	-0.03	0.00	-0.04	0.00	-0.03	0.00	-0.02	-0.03	-0.04	-0.04	-0.02	0.00
N-6	-0.02	-0.29	-0.31	-0.30	-0.33	-0.29	-0.03	0.00	N/A	-0.02	-0.31	-0.33	0.27	-0.26	-0.29	-0.28	-0.01	-0.02	0.02
BS-1	-1.42	-1.46	-2.86	-2.87	-2.98	-2.96	-3.31	-3.40	-1.96	-2.43	-2.35	-2.35	-2.06	-1.14	-2.27	-1.17	-1.85	-2.69	-3.18

Measured in inches of H2O

NA - Not Available

Note: Data reported prior to June 2021 was done by prior consultant

Table 5 (continued)
Historical Landfill Gas Control Well Vacuum Data
East Northport Landfill, East Northport, New York
for period of record between January, 2006 to Present

Well	6/15	9/15	12/15	3/16	6/16	9/16	12/16	3/17	6/17	9/17	12/17	3/18	6/18	9/18	12/18	3/19	6/19	9/19	12/19
CWI-4	-1.50	-2.00	-1.48	-1.54	-1.44	-1.22	-1.31	-1.46	-1.39	-1.21	-1.45	-1.58	-1.44	-1.38	0.00	0.00	-1.36	-1.25	-1.50
CWI-5	-1.55	-1.70	-1.98	-1.98	-1.53	-1.42	-1.66	-1.67	-1.63	-1.43	-1.64	-1.73	-1.54	-1.66	0.00	0.00	-1.60	-1.42	-1.83
CWI-6	-1.67	-1.50	NA	-1.91	-1.58	-1.48	-1.67	-1.76	-1.73	-1.38	-1.80	-2.03	-1.56	-1.72	0.00	0.00	-1.65	-1.39	-1.90
CWI-7	-1.78	-0.72	-0.43	-0.70	-1.42	-1.27	-1.41	-1.51	-1.76	-0.20	-1.72	-2.05	-1.51	-1.04	0.15	0.36	-1.11	-1.20	-1.75
CWII-1	-1.65	-1.08	-1.70	-1.68	-1.50	-1.11	-1.18	-1.62	-1.56	-1.19	-1.70	-1.89	-1.44	-1.52	0.00	0.00	-1.46	-1.15	-1.72
CWII-2	-1.50	-1.42	-1.39	-1.47	-1.09	-1.14	-1.32	-1.92	-1.39	-1.10	-1.40	-1.95	-1.39	-1.38	0.00	0.00	-1.11	-0.91	-1.35
CWII-3	-1.80	-1.47	-1.20	-1.62	-1.55	-1.22	-0.76	-1.65	-1.60	-1.11	-1.69	-1.91	-1.47	-1.50	0.00	0.00	-1.44	-1.09	-1.74
CWII-4	-1.55	-1.30	-1.64	-1.73	-1.46	-1.20	-1.31	-1.59	-1.50	-1.05	-1.57	-1.92	-1.32	-1.05	0.00	0.00	-1.48	-1.06	-1.57
CWII-5	-1.56	-1.29	-1.17	-1.79	-1.54	-1.37	-1.63	-1.68	-1.48	-1.24	-1.72	-1.95	-1.41	-1.63	0.00	0.00	-1.47	-0.89	-1.76
CWII-6	NA	-0.75	0.00	0.00	-0.41	-0.02	-0.04	0.02	-0.11	NA	NA	NA	NA	NA	NA	NA	NA	-1.04	NA
CWII-7	-0.04	-0.50	0.00	0.00	NA	-0.04	-0.01	0.01	-1.50	-0.36	-0.03	0.00	0.00	NA	NA	0.00	-1.48	NA	NA
CWII-8	0.00	-0.07	0.00	0.00	0.00	0.00	0.00	0.00	0.00	0.00	-0.01	0.00	0.00	-1.35	0.00	-0.02	0.00	-0.03	0.02
CWII-9	-0.05	-0.44	0.00	0.00	-0.16	-0.05	-0.03	0.00	-0.06	-0.23	-0.02	-0.01	-1.50	0.00	0.00	-0.02	-0.18	-0.36	0.00
NW-1	-1.44	-1.77	-1.74	-1.59	-1.33	-1.51	-1.68	-1.68	-1.48	-1.34	-1.60	-1.68	-1.47	-1.50	0.00	0.00	-1.59	-1.52	-1.79
NW-2	-1.69	-1.62	-1.71	-1.85	-1.53	-1.48	-1.41	-1.49	-1.66	-1.43	-1.75	-1.92	-1.72	-1.39	0.00	0.00	-1.69	-1.55	-1.85
NW-3	-1.47	-1.40	-1.43	-1.63	-1.35	-1.25	-1.35	-1.03	-1.43	-1.28	-1.45	-1.56	-1.40	-1.43	0.00	0.00	-1.43	-1.34	-1.60
NW-4	-1.27	-1.20	-1.33	-1.45	-1.27	-1.20	1.10	-1.15	-1.35	-1.14	-1.34	-1.49	-1.34	-1.86	0.00	0.00	-1.31	-1.22	-1.40
NW-5	-1.15	-1.00	-1.02	-1.10	-0.95	-1.11	-1.11	-1.20	-1.30	-0.87	-1.40	-1.20	-1.02	-1.00	0.00	0.00	-1.01	-0.95	-1.08
NW-6	-1.10	-1.10	-1.11	-1.18	-1.01	-1.10	-1.07	-1.10	-1.45	-0.90	-1.14	-1.17	-1.16	-1.07	0.00	0.00	-1.00	-0.99	-1.13
Ext-1	-0.94	-0.06	-0.32	-0.06	-0.06	-1.08	-1.13	-0.42	-1.38	NA	-1.10	-0.52	-0.23	-1.00	-0.02	0.00	-1.34	-0.06	-0.04
Ext-2	-1.07	-0.44	-0.41	-0.48	-0.42	-0.98	-0.92	-0.51	-1.29	NA	-1.17	-0.48	-0.37	-0.51	0.00	0.00	-1.47	-0.40	-0.50
Ext-3	-1.13	-1.10	-1.18	-1.22	-1.04	-0.87	-0.81	-1.01	-1.25	NA	-1.09	-0.85	-0.62	-0.88	0.00	0.00	-1.30	-1.00	-1.22
Ext-4	-1.08	-1.27	-1.87	-1.16	-1.01	-0.80	-0.90	-1.02	-1.31	-0.89	-1.21	-0.88	-0.56	-0.91	0.00	0.00	-1.10	-0.97	-1.13
Ext-5	-0.94	-0.92	-0.88	-0.96	-0.85	-0.91	-0.91	-0.88	-0.92	-0.72	-1.08	-0.90	-0.86	-0.06	0.00	0.00	-0.09	-0.80	-0.95
N-1	NA	-0.04	-0.07	-0.02	-0.05	-0.03	NA	NA	NA	NA	-0.05	NA	NA	0.00	0.00	0.00	NA	-1.02	0.00
N-2	-0.02	-0.01	-0.05	-0.04	-0.04	-0.03	0.00	-0.04	0.00	0.00	-0.06	-0.04	-0.20	NA	0.00	-0.03	-1.42	-1.07	-0.02
N-3	0.00	0.00	-0.03	-0.03	-0.03	-0.03	NA	-0.02	0.00	0.00	-0.04	-0.03	-0.40	-0.02	0.00	-0.02	-1.23	-1.05	-0.02
N-4	0.00	0.00	0.00	-0.02	-0.02	-0.02	0.00	0.00	0.00	0.00	-0.03	-0.03	-0.30	-0.01	0.00	-0.02	-1.57	-0.99	0.00
N-5	0.00	0.00	-0.03	-0.03	-0.03	-0.03	0.00	-0.02	0.00	0.00	-0.04	-0.02	-0.30	-0.09	0.00	0.00	-1.34	-1.01	-0.02
N-6	0.00	-0.41	0.00	0.00	-0.16	-0.07	0.00	0.00	-0.06	0.00	-0.02	0.00	0.00	-0.05	0.00	-0.03	-1.40	-0.98	0.00
BS-1	-3.11	-3.05	-3.07	-3.20	-2.85	-2.61	-2.99	-3.02	-2.95	-2.64	-3.05	-2.15	-2.56	-1.31	0.00	0.00	-3.60	-3.52	-3.10

Measured in inches of H2O

NA - Not Available

Note: Data reported prior to June 2021 was done by prior consultant

Table 5 (continued)
Historical Landfill Gas Control Well Vacuum Data
East Northport Landfill, East Northport, New York
for period of record between January, 2006 to Present

Well	3/20	6/20	9/20	12/20	1/21	6/21	9/21	11/21										
CWI-4	-1.50	-1.61	-1.52	-1.50	-1.70	-5.06	-5.36	-5.99										
CWI-5	-1.80	-1.70	-1.60	-1.55	-1.78	-5.12	-6.22	-6.59										
CWI-6	-1.80	-1.62	-1.57	-1.61	-1.76	-5.85	-6.32	-6.83										
CWI-7	-1.72	-1.47	-1.41	-1.48	-1.32	-5.55	-5.95	-6.45										
CWII-1	-1.70	-1.40	-1.32	-1.30	-1.40	-4.90	-5.59	-6.04										
CWII-2	-1.27	-1.14	-1.20	-1.32	-1.47	-4.32	-4.90	-5.18										
CWII-3	-1.69	-1.41	-1.29	-1.41	-1.53	-5.05	-0.01	-6.29										
CWII-4	-1.59	-1.47	-1.41	-1.52	-1.19	-5.34	-5.97	-6.18										
CWII-5	-1.59	-1.46	-1.39	-1.60	-1.49	-5.50	-0.01	-6.44										
CWII-6	NA	NA	NA	NA	NA	NA	-0.75	-0.18										
CWII-7	-0.03	-0.01	-0.11	-0.20	-0.12	-1.12	-0.02	-0.23										
CWII-8	-0.03	-0.02	-0.14	-0.18	-0.11	0.00	-0.01	-0.10										
CWII-9	0.00	-0.12	-0.33	-0.22	-0.13	-0.67	-0.01	-0.26										
NW-1	-1.55	-1.65	-1.52	-1.41	-1.79	-6.20	-6.24	-6.83										
NW-2	-1.53	-1.71	-1.51	-1.49	-1.51	-6.36	-6.37	-7.02										
NW-3	-1.51	-1.62	-1.33	-1.50	-1.72	-5.41	-5.62	-5.86										
NW-4	-1.47	-1.35	-1.29	-1.10	-1.34	-4.96	-4.99	-5.37										
NW-5	-1.04	-1.15	-0.95	-1.00	-1.67	-3.74	-3.85	-4.18										
NW-6	-1.08	-1.09	-0.99	-1.12	-1.21	-3.88	-4.07	-4.30										
Ext-1	-0.08	-0.09	-0.80	-0.61	-0.84	-0.21	-0.10	-0.17										
Ext-2	-0.48	-0.43	-0.29	-0.71	-0.71	-1.66	-1.73	-1.71										
Ext-3	-0.64	-0.98	-0.79	-1.10	-1.19	-4.20	-4.24	-4.38										
Ext-4	-1.40	-1.26	-1.14	-1.12	-1.31	-3.82	-3.88	-3.95										
Ext-5	-0.88	-0.88	-0.79	-1.21	-1.61	-3.24	-3.47	-3.65										
N-1	0.00	0.00	0.00	0.00	-1.01	0.00	0.00	-0.03										
N-2	-0.10	-0.02	-0.30	-0.01	-0.01	-0.05	-0.20	-0.17										
N-3	-0.10	-0.02	-0.05	-0.09	-0.05	-0.12	-0.18	-0.09										
N-4	0.00	0.00	-0.10	0.00	-0.01	-0.14	-0.19	-0.32										
N-5	-0.10	NA	-0.90	-0.82	-0.11	-0.09	-0.22	-0.16										
N-6	0.00	-0.11	-0.17	-0.10	-0.19	-0.67	-0.10	-0.27										
BS-1	-3.10	-3.13	-2.83	-2.90	-4.72	-13.70	-11.21	-4.60										

Measured in inches of H₂O

NA - Not Available

Note: Data reported prior to June 2021 was done by prior consultant

J:_HazWaste\5629 (East Northport Landfill)\Monitoring Reports\Landfill Gas Monitoring\2021Q4\Appendicies