

PROGRESS REPORT

Sal
Handwritten
FILE

Site Name: Rowe Industries
Ground-Water Contamination Site

Prepared By: Alfred N. Kovalik, P.E.
Leggette, Brashears & Graham, Inc. *(Signature)*

Representing: Nabisco, Inc.

Date: May 13, 1997

Reporting Period: April 1997

a. **Actions Taken During Reporting Period**

- Completed monitoring for Greenbelt pond system and Sag Harbor Cove and Ligonee Creek study.
- Completed RFPs for Soil Remedial Action in former drum storage area.

b. **Data Summary**

- Laboratory data generated during the reporting period includes the results of the additional soil borings in the former drum storage area and the results of the soil-vapor samples collected near the Hagerman's residence. A copy of the figures showing the sampling points and tables summarizing the results are attached. Also attached are the laboratory reports and validation review results and soil boring logs.

c. **Submittal Delivery**

- Submitted project status report April 7.

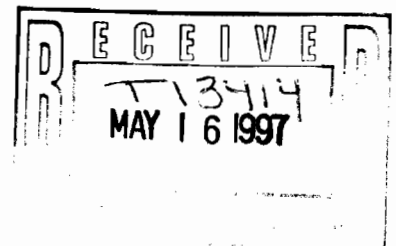
d. **Anticipated Actions During the Next Six Weeks**

- Continue to develop plans and specifications for 100% ground-water design report.
- Meet with EPA personnel and EPA oversight contractor early to discuss 30% ground-water design report.
- Select Remedial Action Contractor.
- Work on the Remedial Action Work Plan, Site Management Plan and Design Modification Requests for the Soil RA.

e. **Percentage of Work Completed and Anticipated Delays**

- 30% ground-water design report is 100-percent complete; waiting for meeting to discuss comments.

l/bgrl/nabsag progress/1997/progapr.97



TABLES

TABLE
ROWE INDUSTRIES SITE
SAG HARBOR, NEW YORK

Summary of Field Screening and Laboratory Results
from 1997 Soil Boring Investigaiton

Boring I.D. (surface elevation ¹)	Sample Interval (ft bg)	Sample Interval (ft msl)	PID (ppm)	PCE Laboratory Results (ppb)
97-1 (32.1)	0-2	32.1 - 30.1	7.1	
	2-4	30.1 - 28.1	3.4	
	4-6	28.1 - 26.1	5.8	
	6-8	26.1 - 24.1	5.5	
	8-10	24.1 - 22.1	3.4	
	10-12	22.1 - 20.1	8.4	
	12-14	20.1 - 18.1	18	
	14-16	18.1 - 16.1	23.6	
	16-18	16.1 - 14.1	41.9	6J
	18-20	14.1 - 12.1	35.5	
	20-22	12.1 - 10.1	22.2	
	22-24	10.1 - 8.1	74	4J
	24-26	8.1 - 6.1	4.5	
	26-28	6.1 - 4.1	5.5	
	28-30	4.1 - 2.1	1.3	
97-2 (31.2)	0-2	31.2 - 29.2	6.1	
	2-4	29.2 - 27.2	9.5	
	4-6	27.2 - 25.2	7.8	
	6-8	25.2 - 23.2	258	
	8-10	23.2 - 21.2	298	
	10-12	21.2 - 19.2	512	
	12-14	19.2 - 17.2	1,607	170,000
	14-16	17.2 - 15.2	155	
	16-18	15.2 - 13.2	262	
	18-20	13.2 - 11.2	201	
	20-22	11.2 - 9.2	168	
	22-24	9.2 - 7.2	249	10J
	24-26	7.2 - 5.2	35.5	

TABLE
(continued)

ROWE INDUSTRIES SITE
SAG HARBOR, NEW YORK

Summary of Field Screening and Laboratory Results
from 1997 Soil Boring Investigation

Boring I.D. (surface elevation')	Sample Interval (ft bg)	Sample Interval (ft msl)	PID (ppm)	PCE Laboratory Results (ppb)
97-2 (31.2)	26-28	5.2 - 3.2	12	
	28-30	3.2 - 1.2	NM	
97-3 (29.5)	0-2	29.5 - 27.5	22.6	
	2-4	27.5 - 25.5	43.8	
	4-6	25.5 - 23.5	78	
	6-8	23.5 - 21.5	113	100,000
	8-10	21.5 - 19.5	13	
	10-12	19.5 - 17.5	11	
	12-14	17.5 - 15.5	2.4	
	14-16	15.5 - 13.5	NM	
	16-18	13.5 - 11.5	5.9	1J/2J ^v
	18-20	11.5 - 9.5	21.2	
	20-22	9.5 - 7.5	23.4	
	22-24	7.5 - 5.5	776	540J
	24-26	5.5 - 3.5	29	
	26-28	3.5 - 1.5	7.1	
	28-30	1.5 - -0.5	4.6	
97-4 (31.3)	0-2	31.3 - 29.3	3.4	
	2-4	29.3 - 27.3	7.2	
	4-6	27.3 - 25.3	0.1	
	6-8	25.3 - 23.3	2.4	
	8-10	23.3 - 21.3	2.3	
	10-12	21.3 - 19.3	7.5	
	12-14	19.3 - 17.3	8.6	
	14-16	17.3 - 15.3	5.9	
	16-18	15.3 - 13.3	28.3	
	18-20	13.3 - 11.3	65.4	
	20-22	11.3 - 9.3	85.3	7J

TABLE
(continued)

ROWE INDUSTRIES SITE
SAG HARBOR, NEW YORK

Summary of Field Screening and Laboratory Results
from 1997 Soil Boring Investigation

Boring I.D. (surface elevation')	Sample Interval (ft bg)	Sample Interval (ft msl)	PID (ppm)	PCE Laboratory Results (ppb)
97-4 (31.3)	22-24	9.3 - 7.3	25.8	2J
	24-26	7.3 - 5.3	12.6	
	26-28	5.3 - 3.3	1.1	
	28-30	3.3 - 1.3	1.4	
97-5 (30.6)	0-2	30.6 - 28.6	1.6	
	2-4	28.6 - 26.6	2	
	4-6	26.6 - 24.6	3	
	6-8	24.6 - 22.6	17.9	ND
	8-10	22.6 - 20.6	12.3	ND
	10-12	20.6 - 18.6	1.1	
	12-14	18.6 - 16.6	6.9	
	14-16	16.6 - 14.6	10.2	
	16-18	14.6 - 12.6	3	
	18-20	12.6 - 10.6	8.9	
	20-22	10.6 - 8.6	3.6	
	22-24	8.6 - 6.6	1.3	
	24-26	6.6 - 4.6	1.8	
	26-28	4.6 - 2.6	0.4	
	28-30	2.6 - 0.6	0.6	
97-6 (34.1)	0-2	34.1 - 32.1	1.4	
	2-4	32.1 - 30.1	0.6	
	4-6	30.1 - 28.1	4.6	
	6-8	28.1 - 26.1	1.9	
	8-10	26.1 - 24.1	3.2	
	10-12	24.1 - 22.1	1.5	
	12-14	22.1 - 20.1	4.3	
	14-16	20.1 - 18.1	8.8	
	16-18	18.1 - 16.1	16.5	

TABLE
(continued)

ROWE INDUSTRIES SITE
SAG HARBOR, NEW YORK

Summary of Field Screening and Laboratory Results
from 1997 Soil Boring Investigation

Boring I.D. (surface elevation ^a)	Sample Interval (ft bg)	Sample Interval (ft msl)	PID (ppm)	PCE Laboratory Results (ppb)
97-6 (34.1)	18-20	16.1 - 14.1	NM	
	20-22	14.1 - 12.1	114	2J
	22-24	12.1 - 10.1	58	2J
	24-26	10.1 - 8.1	NM	
	26-28	8.1 - 6.1	1.6	
	28-30	6.1 - 4.1	0.7	
97-7 (28.6)	18-20	10.6 - 8.6	5	
	20-22	8.6 - 6.6	107	110,000
	22-24	6.6 - 4.6	1,009	120,000
	24-26	4.6 - 2.6	33	
	26-28	2.6 - 0.6	41	
	28-30	0.6 - -1.4	42	
97-8 (30.0)	18-20	12 - 10	501	
	20-22	10 - 8	791	1,400
	22-24	8 - 6	1,160	43,000
	24-26	6 - 4	59	
	26-28	4 - 2	5	
	28-30	2 - 0	10.9	
97-9 (30.1)	18-20	12.1 - 10.1	82.7	ND
	20-22	10.1 - 8.1	14.1	ND
	22-24	8.1 - 6.1	1.1	
	24-26	6.1 - 4.1	1.1	
97-10 (29.4)	0-2	29.4 - 27.4	3.4	
	2-4	27.4 - 25.4	NM	
	4-6	25.4 - 23.4	3.8	
	6-8	23.4 - 21.4	3.4	
	8-10	21.4 - 19.4	1.0	
	10-12	19.4 - 17.4	6.5	

TABLE
(continued)

ROWE INDUSTRIES SITE
SAG HARBOR, NEW YORK

Summary of Field Screening and Laboratory Results
from 1997 Soil Boring Investigaiton

Boring I.D. (surface elevation ^{1/})	Sample Interval (ft bg)	Sample Interval (ft msl)	PID (ppm)	PCE Laboratory Results (ppb)
97-10 (29.4)	12-14	17.4 - 15.4	25	
	14-16	15.4 - 13.4	17.4	
	16-18	13.4 - 11.4	38.2	ND
	18-20	11.4 - 9.4	7.2	
	20-22	9.4 - 7.4	26.7	ND
	22-24	7.4 - 5.4	3.0	
	24-26	5.4 - 3.4	6.9	
	26-28	3.4 - 1.4	0.8	
	28-30	1.4 - -0.6	0.2	
97-11 (32.2)	0-2	32.2 - 30.2	5.1	
	2-4	30.2 - 28.2	0.4	
	4-6	28.2 - 26.2	2.4	
	6-8	26.2 - 24.2	2.4	
	8-10	24.2 - 22.2	7.2	
	10-12	22.2 - 20.2	NM	
	12-14	20.2 - 18.2	17.3	
	14-16	18.2 - 16.2	5.6	
	16-18	16.2 - 14.2	80	9J
	18-20	14.2 - 12.2	NM	
	20-22	12.2 - 10.2	48	
	22-24	10.2 - 8.2	74	40
	24-26	8.2 - 6.2	NM	
	26-28	6.2 - 4.2	1.3	
	28-30	4.2 - 2.2	0.1	

1/ Surface Elevation for each boring location reported in feet mean sea level.

2/ Duplicate sample.

J Concentration is an estimated value, greater than zero and less than the specified minimum detection limit.

ND Concentration below detection limit

NM Not measured.

ppm Parts per million.

PCE Tetrachloroethylene.

ft msl Feet mean sea level.

Note: Samples collected from excavation perimete (97-1, 97-4, 97-5, 97-10, 97-11) validated independently May 5, 1997.

sag.tbl/nabis

ftbg Feet below grade.

ppb Parts per billion.

PID Photoionization detector.

TABLE
ROWE INDUSTRIES SITE
SAG HARBOR, NEW YORK

**Summary of Soil-Vapor Results Collected Adjacent
to Hagerman House**

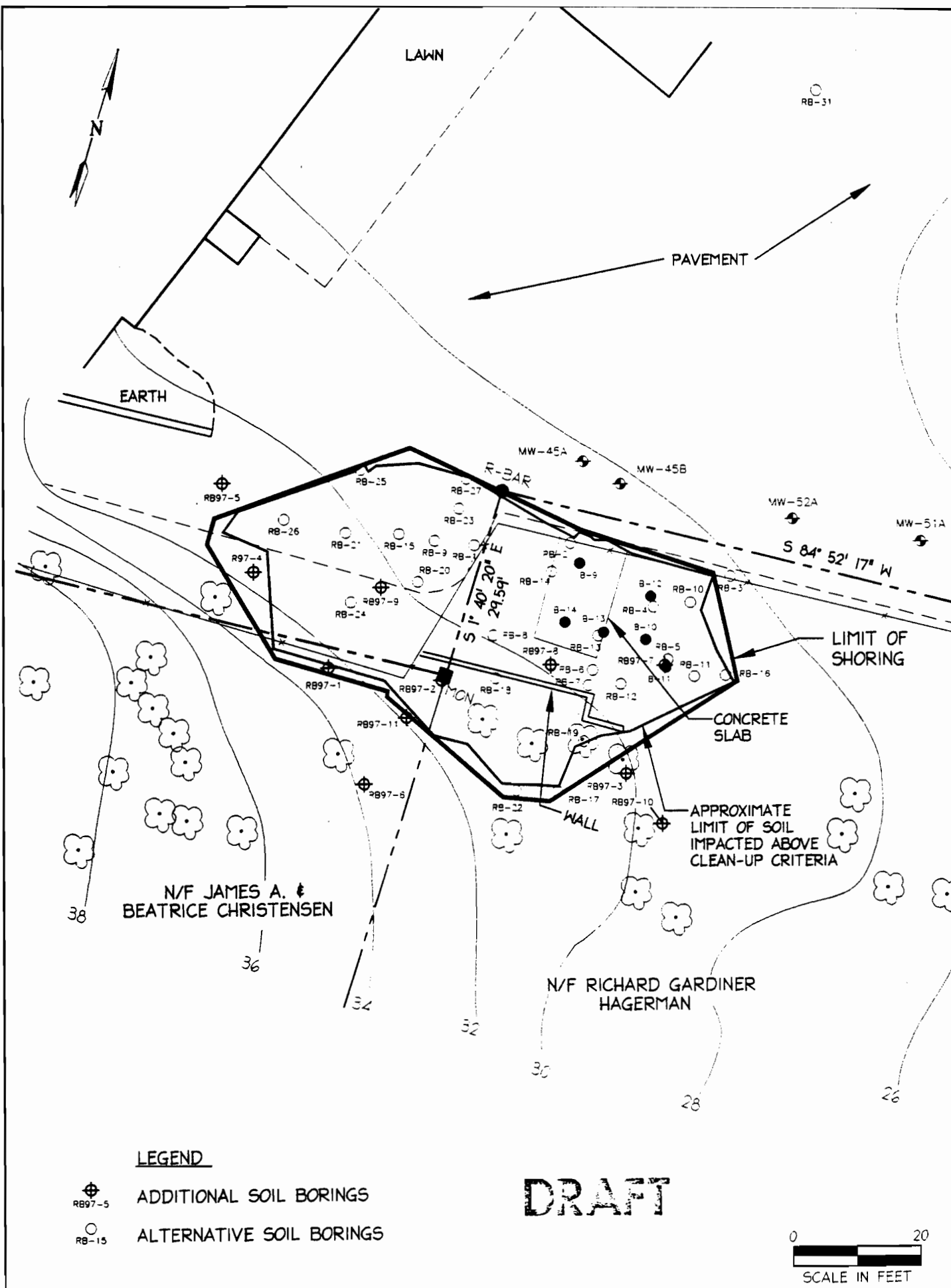
Well I.D.	11 DCE	PCE	Toluene	TCE	111 TCA	Total Xylene
SV-1		20	8		1J	2J
SV-2		120E	9		6	2J
SV-3		48	10			6J
SV-4			5			1J
SV-5		82E	6		4	
SV-7		110E	8		5	1J
SV-8		370E	12		26	
SV-9	9	660E	7	.7J	63	1J

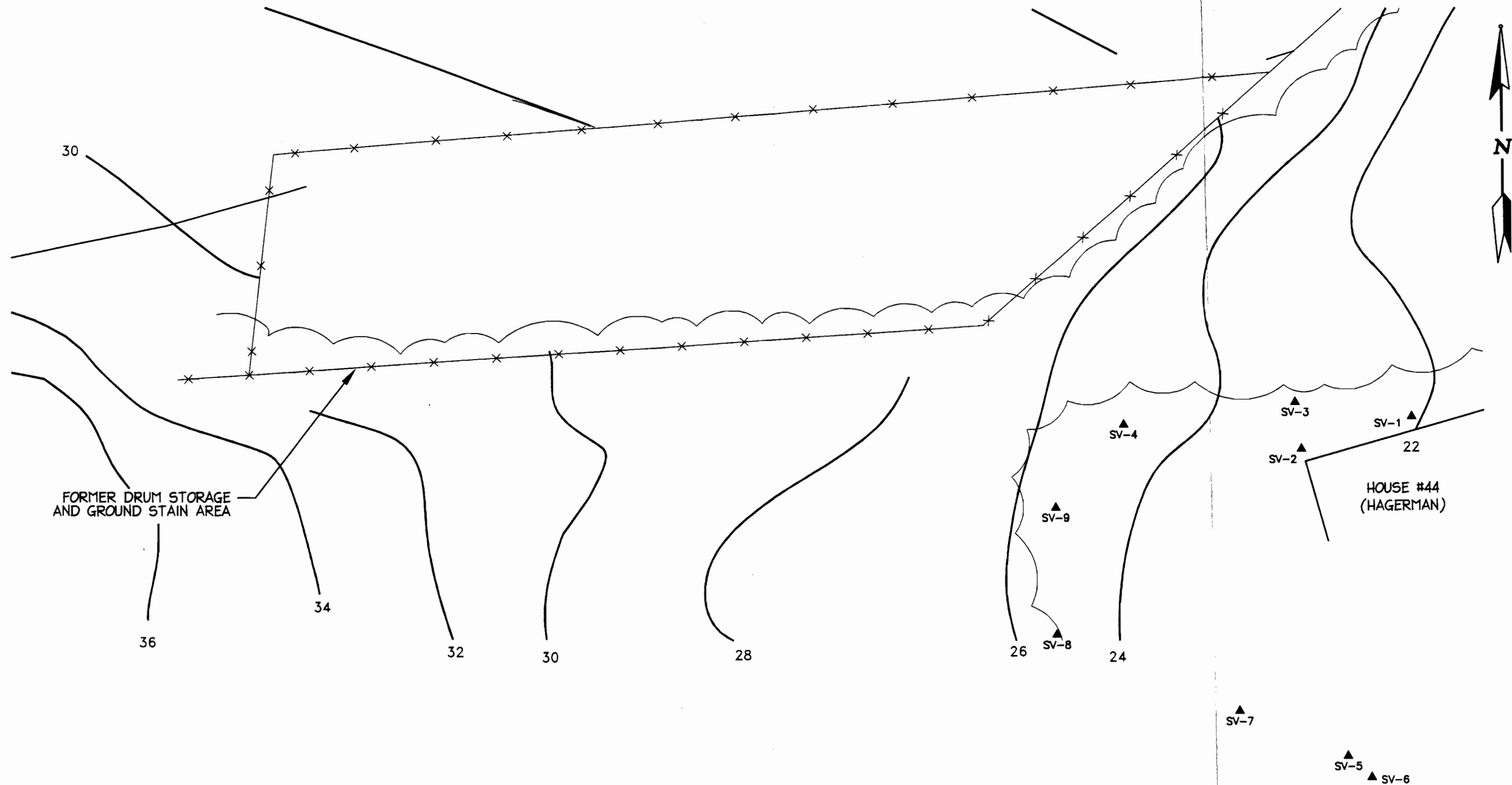
All concentration reported in nl/l, concentration equivalent to ppbv/v.

J Estimated value; detected below specified minimum detection limit.
 E Exceeds calibration curve range.
 DCE Dichloroethylene.
 PCE Tetrachloroethylene.
 TCE Trichloroethylene.
 TCA Trichloroethane.

sag.tbl\nabis

FIGURES





LEGEND

- ▲ SV-1 SURVEY POINT
- x—x— FENCE LOCATION
- 36 ——— GROUND-WATER ELEVATION CONTOUR
IN FEET

DRAFT



ROWE INDUSTRIES SITE SAG HARBOR, NEW YORK

LOCATIONS OF SOIL VAPOR SAMPLE POINTS

DATE	REVISED	PREPARED BY:
		LEGGETTE, BRASHEARS & GRAHAM, INC.
		Professional Ground-Water and Environmental Engineering Services
		126 Monroe Turnpike
		Trumbull CT 06611
		(203) 452-3100
DRAWN: TLC	CHECKED: KSD	DATE: 5/2/97
		FIGURE: 1

SOIL BORING LOGS

GEOLOGIC LOG		OWNER: Rowe Industries, Inc.	
LEGGETTE, BRASHEARS & GRAHAM, INC.		WELL NO.: 97-1	
TRUMBULL, CONNECTICUT		PAGE: 1 OF 2 PAGES	
SITE LOCATION: Approximately 20 feet west of property benchmark in Former Drum Storage Area.		SCREEN SIZE & TYPE:	
DATE COMPLETED: March 18, 1997		SLOT NO.: SETTING:	
DRILLING COMPANY: Delta Well and Pump Co., Inc.		SAND PACK SIZE & TYPE:	
DRILLING METHOD: Hollow-stem auger		SETTING:	
SAMPLING METHOD: Continuous split spoon		CASING SIZE & TYPE:	
OBSERVER: Karen Destefanis		SETTING:	
REFERENCE POINT (RP): Grade		SEAL TYPE:	
ELEVATION OF RP:		SETTING:	
STICK-UP:		BACKFILL TYPE:	
SURFACE COMPLETION:		STATIC WATER LEVEL:	
		DEVELOPMENT METHOD:	
		DURATION: YIELD:	
REMARKS: Water encountered approximately 20 feet below grade.			
ABBREVIATIONS: SS = split spoon W = wash C = cuttings G = grab ST = shelby tube REC = Recovery PPM = parts per million			

DEPTH (FEET)		SAMPLE TYPE	BLOW COUNT	REC. (FEET)	PID READING (PPM)	DESCRIPTION
FROM	TO					
0	2	SS	4-4-4-8	1.0	7.1	Top 0.5 foot; Sand, very fine and silt; organic-rich; gray-black; no odor; dry; Bottom 0.5 foot; SAND, medium; little coarse; trace coarse gravel; brown; no odor; dry.
2	4	SS	8-9-8-9	1.5	3.4	SAND, medium; some coarse; little fine; trace medium to fine gravel; tan-brown; no odor; dry.
4	6	SS	10-11-12-10	1.5	5.8	SAND, medium to fine, tan-brown; little coarse crushed gravel; no odor; dry.
6	8	SS	11-12-13-16	1.25	5.5	SAND, medium; little coarse; trace fine; trace crushed cobble tan-brown; no odor; dry.
8	10	SS	9-11-15-9	1.4	3.4	SAND, medium; little coarse; trace fine; trace fine gravel; beige-brown; no odor; moist.
10	12	SS	7-5-8-8	1.55	8.4	Top 0.3 foot; SAND, medium to fine; gray-brown. Next 1.0 foot; SAND, medium; some fine; beige-brown. Bottom 0.25 foot; SAND, medium to very fine; beige-brown; moist.

OWNER: Rowe Industries, Inc.

WELL NO.: 97-1

PAGE: 2 OF 2 PAGES

DEPTH (FEET)		SAMPLE TYPE	BLOW COUNT	REC. (FEET)	PID READING (PPM)	DESCRIPTION
FROM	TO					
12	14	SS	26-8-9-10	1.4	18	Top 0.2 foot; SAND, medium; brown. Next 0.8 foot; SAND, fine; some very fine; brown. Bottom 0.4 foot; SAND, medium to fine; white-beige.
14	16	SS	12-10-8-7	1.4	23.6	Top 1.0 foot; SAND, fine to very fine; trace medium rounded quartz cobbles; white. Bottom 0.4 foot; Clay and silt bands; dry.
16	18	SS	17-9-8-15	1.4	41.9	Top 0.4 foot; SAND, medium to fine; brown. Next 0.8 foot; SAND, fine to very fine; brown. Bottom 0.2; Clayey silt, beige, mica-rich; no odor.
18	20	SS	17-22-16-14	1.5	35.5	Top 0.35 foot; SAND, medium to fine; beige-brown. Next 0.15 foot; SAND, medium to fine; brown. Bottom 1.0 foot; SAND, medium to coarse; little very coarse sand; white; no odor; dry.
20	22	SS	7-12-14-16	0.3	22.2	SAND; wet.
22	24	SS	10-7-4-4	1.2	74	Top 0.8 foot; SAND, medium to coarse; some fine; beige/brown; no odor; wet. Bottom 0.40 foot; SAND, fine to very fine; little silt; trace clay band .03 foot thick; silver; wet.
24	26	SS	6-6-10-10	1.5	4.5	SAND, medium to coarse; some medium to fine gravel; trace coarse gravel; quartz-rich; beige-brown; no odor; wet.
26	28	SS	26-14-12-12	1.1	5.5	SAND, medium to fine; some coarse; trace very fine quartz pebbles; no odor; wet; color trends down section from gray to beige.
28	30	SS	17-8-5-4	2.0	1.3	Top 0.5 foot; SAND, medium to coarse; some fine to medium gravel; beige. Next 0.3 foot; SAND, medium to very fine; gray. Next 0.15 foot; CLAY; gray. Next 0.4 foot; SAND, fine to medium; black-red iron- stained. Bottom 0.5 foot; SAND, medium to coarse; trace fine; orange.
						END OF BOREHOLE.

97-1.log'nabis

GEOLOGIC LOG LEGGETTE, BRASHEARS & GRAHAM, INC. TRUMBULL, CONNECTICUT		OWNER: Rowe Industries, Inc.	
		WELL NO.: 97-2	
		PAGE: 1 OF 2 PAGES	
SITE LOCATION: Approximately 1 foot west of property benchmark located in Former Drum Storage Area.		SCREEN SIZE & TYPE:	
DATE COMPLETED: March 19, 1997		SLOT NO.: SETTING:	
DRILLING COMPANY: Delta Well and Pump Co., Inc.		SAND PACK SIZE & TYPE:	
DRILLING METHOD: Hollow-stem auger		SETTING:	
SAMPLING METHOD: Continuous split spoon		CASING SIZE & TYPE:	
OBSERVER: Karen Destefanis		SETTING:	
REFERENCE POINT (RP): Grade		SEAL TYPE:	
ELEVATION OF RP:		SETTING:	
STICK-UP:		BACKFILL TYPE:	
SURFACE COMPLETION:		STATIC WATER LEVEL:	
		DEVELOPMENT METHOD:	
		DURATION: YIELD:	
REMARKS: Water encountered at approximately 16.5 feet below grade.			
ABBREVIATIONS: SS = split spoon W = wash C = cuttings G = grab ST = shelly tube REC = Recovery PPM = parts per million			

DEPTH (FEET)		SAMPLE TYPE	BLOW COUNT	REC. (FEET)	PID READING (PPM)	DESCRIPTION
FROM	TO					
0	2	SS	4-3-4-8	1.0	6.1	SAND, medium to fine; trace silt; top 0.2 foot; organic rich; brown; dry; no odor.
2	4	SS	5-8-8-6	1.0	9.5	SAND, medium to fine; trace crushed quartz cobble 2-inch diameter; red-brown; no odor; dry.
4	6	SS	7-7-8-5	1.3	7.8	SAND, medium; some fine; little coarse; trace coarse cobble, crushed; brown-red; no odor; dry.
6	8	SS	5-6-7-10	1.5	258	Top 1.0 foot; SAND, medium to coarse; little fine; beige-brown. Bottom 0.5 foot; Sand, medium to coarse; tan-beige; and sand, medium to fine, brown; alternating layers approximately 0.02 foot thick.
8	10	SS	7-8-9-9	1.8	298	Top 0.3 foot; SAND, medium to fine; gray-brown. Next 1.0 foot; SAND, medium to fine; little coarse; tan beige. Bottom 0.5 foot; SAND, medium to fine; little bands of trace silt, medium to fine; dry.

OWNER: Rowe Industries, Inc.

WELL NO.: 97-2

PAGE: 2 OF 2 PAGES

DEPTH (FEET)		SAMPLE TYPE	BLOW COUNT	REC. (FEET)	PID READING (PPM)	DESCRIPTION
FROM	TO					
10	12	SS	5-6-3-5	1.3	512	SAND, medium to coarse; trace fine; trace quartz cobbles; mica-rich bands throughout; brown; no odor; dry.
12	14	SS	8-9-10-14	1.8	1,607	SAND, medium to coarse; trace medium to coarse rounded gravel; layers of fine to very fine, dark brown sand approximately 0.1 foot thick throughout; odor; dry.
14	16	SS	8-5-5-4	1.7	155	Top 1.4 foot; Sand, medium to coarse; tan, and sand, fine to very fine; dark brown; alternating bands. Bottom 0.3 foot; SAND, medium to coarse; tan-beige.
16	18	SS	6-4-3-4	1.5	262	Top 0.5 foot; SAND, medium to fine; iron-rich; crushed quartz cobble; orange-brown. Next 0.7 foot; SAND, medium to fine; beige-tan; mica-rich; wet. Bottom 0.3 foot; Silty clay.
18	20	SS	4-5-4-4	1.3	201	Top 0.35 foot; WASH; Sand. Bottom 1.25 foot; Silty clay; beige; no odor; dry.
20	22	SS	3-3-3-3	1.2	168	Top 0.8 foot; Silty clay; beige; no odor; dry. Bottom 0.4 foot; SAND, coarse to very coarse; little medium; tan-beige; no odor; wet.
22	24	SS	5-4-5-6	1.0	249	SAND, coarse to very coarse; little medium; trace medium to fine rounded gravel; no odor.
24	26	SS	4-7-5-4	1.25	35.5	Top 0.5 foot; Clayey silt; beige. Next 0.25 foot; SAND, medium to coarse; trace fine. Bottom 0.5 foot; SAND, fine to very fine; some silt; beige; mica-rich bands approximately 0.02 foot thick throughout; brown.
26	28	SS	10-14-11-8	2.0	12	Top 0.9 foot; SAND, medium to fine; brown-gray. Next 0.2 foot; CLAY; beige-silver; some silt; mica-rich. Next 0.2 foot; SAND, medium to fine; trace coarse; red-brown. Next 0.4 foot; Silt, red-stained; and clay silver; layered approximately 0.01 to 0.02 foot thick. Next 0.15 foot; SAND, medium to coarse; tan-orange. Bottom 0.15 foot; SAND, medium to fine; gray.
28	30	SS	5-4-3-5	1.4	NM	Top 0.4 foot; SAND, medium to fine; gray-brown. Next 0.1 foot; Silt and very fine sand, silver; little clay beige. Next 0.65 foot; SAND, medium to coarse; some fine; grades from beige-tan to gray. Next 0.15 foot; SAND, fine to very fine; gray. Bottom 0.1 foot; SAND, medium; some fine; brown.

NM Not measured.

97-2.log\nabis

GEOLOGIC LOG		OWNER: Rowe Industries	
LEGGETTE, BRASHEARS & GRAHAM, INC.		WELL NO.: 97-3	
TRUMBULL, CONNECTICUT		PAGE: 1 OF 2 PAGES	
SITE LOCATION: Approximately 35 feet east of property benchmark in Former Drum Storage Area.		SCREEN SIZE & TYPE: SLOT NO.: SETTING:	
DATE COMPLETED: March 19,1997		SAND PACK SIZE & TYPE: SETTING:	
DRILLING COMPANY: Delta Well and Pump Co., Inc.		CASING SIZE & TYPE: SETTING:	
DRILLING METHOD: Hollow-stem auger		SEAL TYPE: SETTING:	
SAMPLING METHOD: Continuous split spoon		BACKFILL TYPE:	
OBSERVER: Karen Destefanis		STATIC WATER LEVEL:	
REFERENCE POINT (RP): Grade		DEVELOPMENT METHOD:	
ELEVATION OF RP:		DURATION: YIELD:	
STICK-UP:			
SURFACE COMPLETION:			
REMARKS: Water encountered at approximately 17.7 feet below grade.			
ABBREVIATIONS: SS = split spoon W = wash C = cuttings G = grab ST = shelly tube REC = Recovery PPM = parts per million			

DEPTH (FEET)		SAMPLE TYPE	BLOW COUNT	REC. (FEET)	PID READING (PPM)	DESCRIPTION
FROM	TO					
0	2	SS	5-3-3-4	1.2	22.6	Top 0.2 foot; Organic-rich topsoil; black-brown. Next 1.0 foot; Sand, fine; and silt, brown; no odor; dry.
2	4	SS	5-7-8-11	2.0	43.8	Sand, medium to fine; and medium to coarse cobbles, quartz; brown; no odor; dry.
4	6	SS	10-11-10-9	1.5	78	Sand, medium to fine; and coarse cobbles, quartz; brown; no odor.
6	8	SS	14-17-22-25	1.75	113	SAND, medium to fine; little fine gravel; rounded; brown-beige.
8	10	SS	22-27-18-23	1.65	13	Top 1.5 foot; SAND, medium to coarse; trace very coarse; trace crushed cobble; beige-brown. Bottom 0.15 foot; Silt and very fine sand, some clay; beige; no odor; dry.
10	12	SS	25-11-18-22	1.4	11	SAND, medium to coarse; some fine; coarsens down section; trace crushed cobble; tan-brown; no odor; dry.

OWNER: Rowe Industries, Inc.

WELL NO.: 97-3

PAGE: 2 OF 2 PAGES

DEPTH (FEET)		SAMPLE TYPE	BLOW COUNT	REC. (FEET)	PID READING (PPM)	DESCRIPTION
FROM	TO					
12	14	SS	27-35-28-26	1.4	2.4	Top 0.15 foot; SAND, medium; some coarse; white; no odor. Next 0.2 foot; CLAY; red beige. Next 0.1 foot; Silt and very fine sand, olive-brown. Next 0.25 foot; CLAY; red-beige. Bottom 0.7 foot; SAND, fine to very fine; beige-gray; color changes to olive-brown at 0.3 foot from bottom of spoon; no odor; dry.
14	16	SS	5-11-10-9	0.2	—	SAND, medium, brown; slight odor.
16	18	SS	17-22-24-30	2.0	5.9	SAND, medium to fine; fining upwards; crushed cobble (>2" diameter) at 0.4 foot from top of spoon; wet at 17.7 feet; no odor.
18	20	SS	20-15-19-14	1.7	21.2	SAND, medium to very coarse, fining upwards; trace gravel 0.4 foot from bottom of spoon; gray; iron-rich at bottom.
20	22	SS	3-3-3-4	1.0	23.4	SAND, medium to coarse; trace very coarse; tan-beige orange discoloration - iron-rich; no odor; wet.
22	24	SS	5-7-6-6	2.0	776	Top 1.0 foot; SAND, medium to coarse; trace quartz cobble (1" diameter). Next 0.3 foot; SAND, medium; some coarse; orange-brown. Next 0.3 foot; SAND, medium; trace fine. Bottom 0.4 foot; SAND, medium to fine; olive-brown; slight odor.
24	26	SS	3-4-3-3	1.2	29	Top 0.8 foot; SAND, coarse to medium; tan-beige. Bottom 0.4 foot; SAND, medium to very coarse; trace fine gravel; white-brown.
26	28	SS	5-8-9-9	2.0	7.1	Top 0.6 foot; SAND, medium to coarse; tan-brown. Next 0.25 foot; SAND, very fine to fine; some silt; gray. Next 0.1 foot; SAND, very fine to fine; iron-stained red-orange. Next 0.15 foot; CLAY; trace silt; beige-red. Next 0.05 foot; SAND, medium to fine; brown-tan. Next 0.05 foot; SAND, fine; orange-red. Next 0.15 foot; CLAY; red-beige. Next 0.2 foot; SAND, medium to fine; brown. Next 0.25 foot; CLAY; silver-gray. Bottom 0.2 foot; SAND, medium to coarse; red-orange.
28	30	SS	6-7-7-5	1.8	4.6	Top 0.8 foot; WASH-Sand, medium to coarse. Bottom 1.0 foot; SAND, medium to very coarse, fining upwards; orange-brown; red-brown approximately 0.02-foot thick at 29.25 and 28.9 feet.
						END OF BOREHOLE

GEOLOGIC LOG LEGGETTE, BRASHEARS & GRAHAM, INC. TRUMBULL, CONNECTICUT		OWNER: Rowe Industries, Inc.	
		WELL NO.: 97-4	
		PAGE: 1 OF 2 PAGES	
SITE LOCATION: Approximately 35 feet northeast of property benchmark located in Former Drum Storage Area.		SCREEN SIZE & TYPE:	
DATE COMPLETED: March 20, 1997		SLOT NO.: SETTING:	
DRILLING COMPANY: Delta Well and Pump Co., Inc.		SAND PACK SIZE & TYPE:	
DRILLING METHOD: Hollow-stem auger		SETTING:	
SAMPLING METHOD: Continuous split spoon		CASING SIZE & TYPE:	
OBSERVER: Karen Destefanis		SETTING:	
REFERENCE POINT (RP): Grade		SEAL TYPE:	
ELEVATION OF RP:		SETTING:	
STICK-UP:		BACKFILL TYPE:	
SURFACE COMPLETION:		STATIC WATER LEVEL:	
		DEVELOPMENT METHOD:	
DURATION:		YIELD:	
REMARKS: Water encountered at approximately 16.75 feet below grade.			
ABBREVIATIONS: SS = split spoon W = wash C = cuttings G = grab ST = shelly tube REC = Recovery PPM = parts per million			

DEPTH (FEET)		SAMPLE TYPE	BLOW COUNT	REC. (FEET)	PID READING (PPM)	DESCRIPTION
FROM	TO					
0	2	SS	8-5-7-6	1.5	3.4	Top 0.3 foot; Organic-rich topsoil, black; Bottom 1.2 foot; SAND, medium to fine; trace silt; brown; no odor; dry.
2	4	SS	17-12-11-15	1.5	7.2	SAND, medium to coarse; little fine gravel; trace very coarse sand; trace crushed cobble near top and bottom of spoon; tan-brown; no odor; dry.
4	6	SS	10-11-10-12	2.0	0.1	SAND, medium to coarse; trace bands of very coarse sand at 4.3 feet and 4.75 feet; fine sand at 5.7 feet; trace quartz cobbles throughout; tan-brown.
6	8	SS	15-10-7-11	2.0	2.4	SAND, medium to coarse; trace quartz cobbles throughout; tan-brown; no odor.
8	10	SS	7-9-11-8	2.0	2.3	SAND, medium; little fine and coarse; coarse to very coarse band approximately 0.02 foot thick at 9 feet darker; brown; tan-beige; moist; no odor.
10	12	SS	22-15-18-27	1.8	7.5	SAND, medium; little fine; tight formation, fining upwards; crushed quartz cobble at bottom of spoon; tan/brown; moist; no odor.

OWNER: Rowe Industries, Inc.

WELL NO.: 97-4

PAGE: 2 OF 2 PAGES

DEPTH (FEET)		SAMPLE TYPE	BLOW COUNT	REC. (FEET)	PID READING (PPM)	DESCRIPTION
FROM	TO					
12	14	SS	18-12-14-22	1.85	8.6	Top 1.60 foot: SAND, medium; little fine; trace very coarse bands approximately 0.02 foot thick throughout; tan-beige. Bottom 0.25 foot: SAND, medium to coarse sand; tan-beige; trace clay and silt layers approximately 0.02-0.01 foot thick at 12.75 and 13.10 feet; red-brown; moist; no odor.
14	16	SS	16-10-11-11	1.8	5.9	SAND, medium; beige-tan.
16	18	SS	8-9-7-7	1.45	28.3	Top 0.35 foot: SAND, medium; some coarse; little fine gravel; beige; no odor; Next 0.60 foot: SAND, medium to very coarse. Next 0.15 foot: GRAVEL, medium, rounded. Next 0.1 foot: Silty clay, red-brown. Bottom 0.25 foot: SAND, fine; little medium; mica-rich; tan-beige; wet; no odor.
18	20	SS	5-4-5-5	1.9	65.4	Top 0.9 foot: SAND, medium to fine. Bottom 1.0 foot: CLAY; bands of fine to very fine sand; red-brown; no odor.
20	22	SS	2-3-2-2	1.9	85.3	Top 0.4 foot: SAND, fine to very fine; brown-olive. Next 0.8 foot: CLAY; red-brown. Next 0.2 foot: Sand, fine to very fine; and silt; olive-brown. Bottom 0.4 foot: Clay, red; and silt, silver-gray.
22	24	SS	5-7-4-4	1.8	25.8	Top 0.8 foot: SAND, fine to very fine; brown; wet. Bottom 1.0 foot: SAND, medium to very coarse; trace fine gravel at 23.3 feet; tan-beige; wet; no odor.
24	26	SS	4-4-9-10	1.85	12.6	Top 0.8 foot: WASH-Sand, medium to fine. Next 0.8 foot: SAND, medium to coarse; little very coarse; tan-beige. Bottom 0.25 foot: SAND, medium to coarse; reddish-black; wet; no odor.
26	28	SS	15-8-8-7	2.0	1.1	Top 1.0 foot: WASH-Sand, medium to coarse; beige-gray. Next 0.5 foot: SAND, medium to very coarse; burnt red to orange. Bottom 0.5 foot: SAND, medium to coarse; some very coarse; beige-gray; wet; no odor.
28	30	SS	15-8-8-7	2.0	1.4	SAND, medium to very coarse; trace quartz cobbles with 1.5 inch diameter; tan-orange; wet; no odor.
						END OF BOREHOLE.

97-4.log\nabis

GEOLOGIC LOG		OWNER: Rowe Industries, Inc.
LEGGETTE, BRASHEARS & GRAHAM, INC.		WELL NO.: 97-6
TRUMBULL, CONNECTICUT		PAGE: 1 OF 2 PAGES
SITE LOCATION: Approximately 20 feet southwest of property benchmark located in Former Drum Storage Area.		SCREEN SIZE & TYPE: SLOT NO.: SETTING:
DATE COMPLETED: March 21, 1997		SAND PACK SIZE & TYPE:
DRILLING COMPANY: Delta Well and Pump Co., Inc.		SETTING:
DRILLING METHOD: Hollow-stem auger		CASING SIZE & TYPE:
SAMPLING METHOD: Continuous split spoon		SETTING:
OBSERVER: Karen Destefanis		SEAL TYPE:
REFERENCE POINT (RP): Grade		SETTING:
ELEVATION OF RP:		BACKFILL TYPE:
STICK-UP:		STATIC WATER LEVEL:
SURFACE COMPLETION:		DEVELOPMENT METHOD:
DURATION:		YIELD:
REMARKS: Water encountered at approximately 19.7 feet below grade.		
ABBREVIATIONS: SS = split spoon W = wash C = cuttings G = grab ST = shelby tube REC = Recovery PPM = parts per million		

DEPTH (FEET)		SAMPLE TYPE	BLOW COUNT	REC. (FEET)	PID READING (PPM)	DESCRIPTION
FROM	TO					
0	2	SS	4-3-5-4	1.7	1.4	Top 0.7 foot; Silt and very fine sand; organic-rich; dark brown-black. Bottom 1.0 foot; SAND, medium; some medium to coarse rounded cobbles throughout; brown-tan; dry; no odor.
2	4	SS	5-5-4-3	1.5	0.6	SAND, medium; little coarse; little fine; trace quartz crushed cobble at top and bottom of spoon, approximately 1" to 2" diameter; tan-brown;
4	6	SS	11-12-14-18	1.2	4.6	Top 1.0 foot; SAND, medium; some fine; crushed, quartz cobbles throughout; tan-brown; dry; no odor.
6	8	SS	15-19-12-11	1.8	1.9	SAND, medium to fine; some fine gravel throughout; trace quartz cobble at bottom of spoon; tan-brown; dry; no odor.
8	10	SS	11-15-20-18	1.7	3.2	Top 0.7 foot; SAND, medium; some fine sand and fine rounded gravel; brown; moist; no odor. Next 0.1 foot; SAND, coarse to very coarse; little medium; tan-brown. Next 0.5 foot; SAND, medium to fine; beige-tan. Next 0.2 foot; Sand, medium; and fine gravel. Bottom 0.2 foot; SAND, fine to very fine; dark brown; moist; no odor.
10	12	SS	9-11-15-10	0.8	1.5	Top 0.2 foot; COBBLE, crushed quartz. >2" diameter; Bottom 0.6 foot; SAND, medium to fine; little coarse; trace fine gravel; gray-brown; moist; no odor.

OWNER: Rowe Industries, Inc.

WELL NO.: 97-6

PAGE: 2 OF 2 PAGES

DEPTH (FEET)		SAMPLE TYPE	BLOW COUNT	REC. (FEET)	PID READING (PPM)	DESCRIPTION
FROM	TO					
12	14	SS	15-17-20-19	1.3	4.3	SAND, medium to coarse; little fine; quartz cobble at top of spoon; brown-tan; dry; no odor.
14	16	SS	18-20-19-15	1.5	8.8	Top 1.05 foot; SAND, medium; little fine; little coarse; dark brown; dry; no odor. Next 0.2 foot; SAND, medium; white. Bottom 0.35 foot; Sand, medium; white; and fine to very fine sand, dark brown; dry; no odor.
16	18	SS	20-27-25-23	1.5	16.5	Sand, medium to fine, white; and fine to very fine sand, dark brown; trace fine gravel bands throughout; dry; no odor.
18	20	SS	15-20-22-25	1.75	--	Top 0.75 foot; SAND, fine to medium; little coarse; dark brown; dry; no odor. Next 0.75 foot; COBBLES, crushed quartz. Next 0.1 foot; Clayey silt; brown. Bottom 0.3 foot; SAND, fine to very fine; white-beige; wet.
20	22	SS	5-3-5-4	2.0	114	Top 0.8 foot; SAND, medium to fine; white-beige. Next 0.1 foot; CLAY; red-brown-silver. Next 0.1 foot; SAND, fine to very fine. Next 0.3 foot; Clay and silt; red-brown. Bottom 0.7 foot; SAND, medium to fine; little coarse; brown; wet; no odor.
22	24	SS	8-5-7-7	1.6	58	Top 0.5 foot; SAND, medium to fine; dark brown. Next 0.25 foot; SAND, medium to fine; beige-white. Next 0.15 foot; SAND, fine to medium; brown; mica-rich. Next 1.05 foot; SAND, fine to very fine; white-beige. Bottom 0.15 foot; Sand, coarse to very coarse, and fine gravel rounded; red-brown; wet; no odor.
24	26	SS	5-7-8-10	0.2	--	COBBLE, quartz; little coarse gravel.
26	28	SS	10-8-9-11	2.0	1.6	Top 0.80 foot; SAND, medium to coarse; fines with depth; gray; no odor. Next 0.6 foot; SAND, fine to very fine; brown; no odor. Bottom 0.60; Clay, silt and very fine to fine sand.
28	30	SS	5-7-8-5	2.0	0.7	Top 0.55 foot; WASH- Sand, medium to coarse; little fine; gray; no odor. Next 0.6 foot; SAND, fine to very fine; little silt; trace clay; brown. Next 0.35 foot; SAND, coarse; red-brown; vertical black streak through center. Next 0.15 foot; Sand, fine to very fine, and silt; trace clay; beige-brown. Bottom 0.35 foot; SAND, medium to fine; little clay; orange rust-stained brown; no odor.
35	37	SS	5-7-6-6	1.0		Top 0.05 foot; SAND, very coarse to very fine; orange-brown; no odor. Next 0.2 foot; SAND, medium to coarse; orange-brown. Next 0.2 foot; SAND, fine; some clay; gray. Next 0.55 foot; SAND, medium to very coarse; some fine gravel; gray.
						END OF BOREHOLE

GEOLOGIC LOG LEGGETTE, BRASHEARS & GRAHAM, INC. TRUMBULL, CONNECTICUT		OWNER: Rowe Industries, Inc.	
		WELL NO.: 97-7	
		PAGE: 1 OF 2 PAGES	
SITE LOCATION: Approximately 35 feet northeast of property benchmark located in Former Drum Storage Area.		SCREEN SIZE & TYPE:	
DATE COMPLETED: March 21, 1997		SLOT NO.: SETTING:	
DRILLING COMPANY: Delta Well and Pump Co., Inc.		SAND PACK SIZE & TYPE:	
DRILLING METHOD: Hollow-stem auger		SETTING:	
SAMPLING METHOD: Continuous split spoon		CASING SIZE & TYPE:	
OBSERVER: Karen Destefanis		SETTING:	
REFERENCE POINT (RP): Grade		SEAL TYPE:	
ELEVATION OF RP:		SETTING:	
STICK-UP:		BACKFILL TYPE:	
SURFACE COMPLETION:		STATIC WATER LEVEL:	
		DEVELOPMENT METHOD:	
		DURATION: YIELD:	
REMARKS: Water encountered at approximately 18.8 feet below grade.			
ABBREVIATIONS: SS = split spoon W = wash C = cuttings G = grab ST = shelly tube REC = Recovery PPM = parts per million			

DEPTH (FEET)		SAMPLE TYPE	BLOW COUNT	REC. (FEET)	PID READING (PPM)	DESCRIPTION
FROM	TO					
18	20	SS	5-5-7-6	1.45	5	Top 0.25 foot; SAND, medium to coarse; little fine; dark brown; moist. Next 0.9 foot; SAND, medium; little fine and coarse; trace coarse gravel; beige-buff; wet. Bottom 0.3 foot; Sand and coarse to very coarse gravel; beige-buff; wet; no odor.
20	22	SS	3-3-4-3	1.55	107	SAND, medium to coarse, gray.
22	24	SS	3-2-2-2	1.9	1,009	Top 0.5 foot; SAND, medium to coarse; trace medium gravel; light tan-beige. Bottom 1.4 foot; SAND, medium, gray; strong odor.
24	26	SS	5-6-6-4	2.0	33	Top 0.4 foot; SAND, medium to coarse; little fine; gray. Next 0.85 foot; SAND, medium to coarse; little fine; beige. Next 0.2 foot; SAND, medium; little fine; iron-stained orange. Next 0.4 foot; SAND, medium to fine; little very fine; brown- gray. Bottom 0.15 foot; SAND, coarse; little medium; orange to brown.

OWNER: Rowe Industries, Inc.

WELL NO.: 97-7

PAGE: 2 OF 2 PAGES

DEPTH (FEET)		SAMPLE TYPE	BLOW COUNT	REC. (FEET)	PID READING (PPM)	DESCRIPTION
FROM	TO					
26	28	SS	8-7-10-11	2.0	41	Top 0.68 foot; WASH- Sand, medium to fine; gray. Next 0.4 foot; SAND, medium; some fine; little coarse; brown. Next 0.02 foot; CLAY. Next 0.25 foot; SAND, fine to very fine; brown. Next 0.4 foot; SAND, coarse to very coarse; little medium; beige-brown. Next 0.1 foot; Sand, coarse to very coarse, and medium gravel; red- brown. Bottom 0.15 foot; SAND, fine to very fine; some silt; gray; no odor.
28	30	SS	6-7-7-8	2.0	42	Top 1.3 foot; SAND, medium; little coarse; tan-brown. Bottom 0.7 foot; SAND, fine to very fine; gray-silver.
						END OF BOREHOLE

97-7.log\nabis

GEOLOGIC LOG LEGGETTE, BRASHEARS & GRAHAM, INC. TRUMBULL, CONNECTICUT		OWNER: Rowe Industries, Inc.	
		WELL NO.: 97-8	
		PAGE: 1 OF 1 PAGES	
SITE LOCATION: Rowe Industries parking lot		SCREEN SIZE & TYPE:	
		SLOT NO.: SETTING:	
DATE COMPLETED: March 24, 1997		SAND PACK SIZE & TYPE:	
DRILLING COMPANY: Delta Well and Pump Co., Inc.		SETTING:	
DRILLING METHOD: Hollow-stem auger		CASING SIZE & TYPE:	
SAMPLING METHOD: Continuous split spoon		SETTING:	
OBSERVER: Karen Destefanis		SEAL TYPE:	
REFERENCE POINT (RP): Grade		SETTING:	
ELEVATION OF RP:		BACKFILL TYPE:	
STICK-UP:		STATIC WATER LEVEL:	
SURFACE COMPLETION:		DEVELOPMENT METHOD:	
DURATION:		YIELD:	
REMARKS: Water encountered at approximately 18 feet below grade.			
ABBREVIATIONS: SS = split spoon W = wash C = cuttings G = grab ST = shelly tube REC = Recovery PPM = parts per million			

DEPTH (FEET)		SAMPLE TYPE	BLOW COUNT	REC. (FEET)	PID READING (PPM)	DESCRIPTION
FROM	TO					
18	20	SS	3-2-3-4	1.5	501	SAND, medium to coarse; some very coarse; gray; odor; wet.
20	22	SS	2-3-3-3	2.0	791	Top 1.0 foot; SAND, medium to very coarse; trace fine gravel; beige-gray. Bottom 1.0 foot; SAND, fine to very fine; little medium; mica-rich; gray; odor.
22	24	SS	3-4-5-4	2.0	1,160	Top 1.0 foot; SAND, medium to coarse; gray. Bottom 1.0 foot; SAND, fine to very fine; mica-rich; gray; wet; odor.
24	26	SS	2-4-3-3	1.0	59	SAND, fine to very fine; trace silt and clay at 24.7 feet; beige; mica-rich.
26	28	SS	2-4-5-5	2.0	5	Top 1.0 foot; SAND, fine to very fine; gray. Bottom 1.0 foot; SAND, very fine; some silt and clay; gray.
28	30	SS	5-4-4-3	1.9	10.9	Top 0.6 foot; SAND, fine to very fine; gray-tan. Next 0.2 foot; Sand, very fine; and silt; some clay; gray. Next 0.1 foot; SAND, fine to very fine; iron-stained. Next 0.1 foot; Sand, very fine; and silt; brown. Next 0.4 foot; Silty clay; gray. Bottom 0.5 foot; SAND, medium to very coarse; trace medium to fine gravel; gray.
						END OF BOREHOLE

GEOLOGIC LOG LEGGETTE, BRASHEARS & GRAHAM, INC. TRUMBULL, CONNECTICUT		OWNER: Rowe Industries, Inc.	
		WELL NO.: 97-10	
		PAGE: 1 OF 3 PAGES	
SITE LOCATION: Approximately 40 feet southeast of property benchmark located in Former Drum Storage Area		SCREEN SIZE & TYPE: SLOT NO.: SETTING:	
DATE COMPLETED: March 25, 1997		SAND PACK SIZE & TYPE:	
DRILLING COMPANY: Delta Well and Pump Co., Inc.		SETTING:	
DRILLING METHOD: Hollow-stem auger		CASING SIZE & TYPE:	
SAMPLING METHOD: Continuous split spoon		SETTING:	
OBSERVER: Karen Destefanis and Julie Griswold		SEAL TYPE:	
REFERENCE POINT (RP): Grade		SETTING:	
ELEVATION OF RP:		BACKFILL TYPE:	
STICK-UP:		STATIC WATER LEVEL:	
SURFACE COMPLETION:		DEVELOPMENT METHOD:	
DURATION:		YIELD:	
REMARKS: Water encountered at approximately 17.7 feet below grade.			
ABBREVIATIONS: SS = split spoon W = wash C = cuttings G = grab ST = shelly tube REC = Recovery PPM = parts per million			

DEPTH (FEET)		SAMPLE TYPE	BLOW COUNT	REC. (FEET)	PID READING (PPM)	DESCRIPTION
FROM	TO					
0	2	SS	2-2-3-2	1.3	3.4	Top 0.2 foot; Organic-rich topsoil; glass. Next 0.4 foot; SAND, medium to fine; little medium gravel; brown. Next 0.2 foot; SAND, medium to fine; dark brown. Next 0.5 foot; SAND, medium to very fine; little gravel; brown; dry.
2	4	SS	5-8-11-8	0.4	--	Glass and 2" diameter cobble blocking shoe. Some sand, medium to fine.
4	6	SS	8-9-9-10	1.0	3.8	Top 0.1 foot; Organic-rich topsoil; glass and cobble; dark brown. Next 0.9 foot; SAND, medium to fine; some gravel, fine to coarse; orange.
6	8	SS	18-28-35-40	2.0	3.4	Top 0.1 foot; SAND, coarse to fine; brown. Next 0.1 foot; COBBLE; crushed. Next 1.8 foot; SAND, medium; some coarse to fine sand; some gravel, medium; orange-brown; dry.
8	10	SS	11-15-8-9	1.55	1.0	Top 0.3 foot; SAND, medium; little fine; light tan. Next 0.45 foot; Gravel, medium to coarse; and coarse to very coarse sand; light brown. Next 0.3 foot; SAND, coarse to medium; light brown. Bottom 0.5 foot; SAND, fine to very fine; and silt; trace clay; tan.

OWNER: Rowe Industries, Inc.

WELL NO.: 97-10

PAGE: 2 OF 3 PAGES

DEPTH (FEET)		SAMPLE TYPE	BLOW COUNT	REC. (FEET)	PID READING (PPM)	DESCRIPTION
FROM	TO					
10	12	SS	11-12-16-15	1.1	6.5	Top 0.25 foot; SAND, medium; some fine; brown. Next 0.25 foot; Gravel, crushed; and fine sand; some medium to coarse sand; gray. Next 0.3 foot; SAND, medium to coarse; and medium to coarse gravel; orange. Next 0.4 foot; Sand, fine to very fine; and silt; tan-gray.
12	14	SS	15-10-9-12	2.0	25	Top 1.1 foot; Sand, very fine; and silt; trace clay; gray-beige. Bottom 0.9 foot; Clayey silt; orange-brown; dry.
14	16	SS	8-5-7-7	2.0	17.4	Top 0.5 foot; SAND, medium; some fine to coarse gravel; brown. Next 0.1 foot; SAND, medium to coarse; little fine gravel; orange. Next 0.15 foot; CLAY; brown. Next 0.1 foot; SAND, medium; white to orange; brown. Next 0.1 foot; SAND, medium to fine; orange-brown. Next 0.5 foot; SAND, very coarse; little fine gravel; brown-orange to white. Next 0.4 foot; SAND, medium; orange-tan. Bottom 0.1 foot; SAND, very coarse; trace red rock fragments; white.
16	18	SS	9-10-8-9	1.2	38.2	Top 0.2 foot; SAND, medium; some fine sand and fine gravel; brown; dry. Next 0.7 foot; SAND, coarse; some medium sand and medium to coarse gravel; cream; dry. Bottom 0.3 foot; SAND, coarse to medium; some medium to coarse gravel; cream; wet.
18	20	SS	5-6-7-8	1.8	7.2	Top 1.3 foot; SAND, medium to very coarse; some fine gravel; beige-gray. Next 0.3 foot; Sand, coarse to very coarse; and fine gravel; orange rust-stained. Bottom 0.2 foot; SAND, medium; brown-orange; wet.
20	22	SS	4-5-8-6	2.0	26.7	Top 0.15 foot; Silty clay; Next 0.25 foot; SAND, medium; beige-tan. Next 0.2 foot; SAND, medium to coarse; orange-brown. Next 0.5 foot; SAND, medium; orange-brown. Next 0.4 foot; SAND, fine to very fine; trace silt, mica-rich; brown-orange. Bottom 0.5 foot; SAND, fine to very fine; some silt; mica-rich; gray.
22	24	SS	10-9-12-11	2.0	3.0	Top 0.1 foot; CLAY; brown. Next 0.2 foot; SAND, very coarse to coarse; brown-beige. Next 0.4 foot; SAND, medium; light orange. Next 0.2 foot; SAND, very fine to fine; beige-orange. Next 0.4 foot; CLAY; brown-gray. Next 0.05 foot; SAND, medium; brown. Next 0.2 foot; CLAY; brown. Next 0.1 foot; SAND, medium; brown. Bottom 0.3 CLAY; brown.
24	26	SS	5-4-3-4	1.3	6.9	Top 0.75 foot; SAND, very coarse to coarse; some medium; beige. Next 0.5 foot; SAND, medium; beige.

OWNER: Rowe Industries, Inc.

WELL NO.: 97-10

PAGE: 3 OF 3 PAGES

DEPTH (FEET)		SAMPLE TYPE	BLOW COUNT	REC. (FEET)	PID READING (PPM)	DESCRIPTION
FROM	TO					
26	28	SS	8-8-9-7	1.4	0.8	Top 0.8 foot; SAND, medium; beige. Bottom 0.6 foot; SAND, coarse to very fine; orange.
28	30	SS	5-7-7-8	1.3	0.2	SAND, very coarse to coarse; trace fine gravel; orange brown.
						END OF BOREHOLE

97-10.log\nabis

GEOLOGIC LOG		OWNER: Rowe Industries Site	
LEGGETTE, BRASHEARS & GRAHAM, INC.		WELL NO.: 97-11	
TRUMBULL, CONNECTICUT		PAGE: 1 OF 2 PAGES	
SITE LOCATION: Approximately 9 feet southwest of property benchmark in Former Drum Storage Area		SCREEN SIZE & TYPE:	
DATE COMPLETED: 03/26/97		SLOT NO.: SETTING:	
DRILLING COMPANY: Delta Well & Pump		SAND PACK SIZE & TYPE:	
DRILLING METHOD: Hollow-stem auger		SETTING:	
SAMPLING METHOD: Continuous split spoon		CASING SIZE & TYPE:	
OBSERVER: K. Destefanis and Julie Griswold		SETTING:	
REFERENCE POINT (RP): Grade		SEAL TYPE:	
ELEVATION OF RP: 31 ft		SETTING:	
STICK-UP: 0		BACKFILL TYPE:	
SURFACE COMPLETION:		STATIC WATER LEVEL:	
		DEVELOPMENT METHOD:	
DURATION:		YIELD:	
REMARKS: Water encountered at approximately 17.8 feet below grade.			
ABBREVIATIONS: SS = split spoon W = wash C = cuttings G = grab ST = shelly tube			
REC = Recovery PPM = parts per million			

DEPTH (FEET)		SAMPLE TYPE	BLOW COUNT	REC. (FEET)	PID READING (PPM)	DESCRIPTION
FROM	TO					
0	2	SS	5-7-7-8	1.4	5.1	SAND, medium; some fine sand; some fine to coarse gravel; brown; dry.
2	4	SS	8-10-11-11	1.35	0.4	SAND, medium; some fine sand; little fine to medium gravel; brown; dry.
4	6	SS	15-16-9-11	1.3	2.4	SAND; medium; some fine sand; little fine to medium gravel; brown; dry.
6	8	SS	16-12-15-9	2	2.4	Top 0.7 foot; SAND, medium; some fine sand; little medium gravel; brown; dry. Next 1 foot; SAND, coarse; brown; dry. Bottom 1.2 feet; SAND, medium; some fine sand; little medium gravel; brown; dry.
8	10	SS	8-7-8-9	1.6	7.2	SAND, medium; some fine and coarse; little fine to medium gravel; brown; dry.
10	12	SS	11-15-20-12	0	--	No recovery.
12	14	SS	10-16-17-9	1.6	17.3	Top 1.1 foot; SAND, medium; some fine sand; some fine to medium gravel; brown; dry. Bottom 0.5 foot; SAND, coarse; some fine to medium sand; some fine gravel brown; dry.

OWNER: Rowe Industries Site

WELL NO.: 97-11

PAGE: 2 OF 2 PAGES

DEPTH (FEET)		SAMPLE TYPE	BLOW COUNT	REC. (FEET)	PID READING (PPM)	DESCRIPTION
FROM	TO					
14	16	SS	15-20-14-12		5.6	Top 0.5 foot; SAND, medium to fine; some coarse; tan-beige; dry. Next 0.3 foot; SAND, fine to very fine; dark brown. Bottom 0.2 foot; SAND, medium to fine; some coarse; beige.
16	18	SS	8-11-9-9	2	80	Top 0.75 foot; SAND, medium; brown; dry. Next 0.1 foot; Silt and sand; some clay; dry. Next 0.9 foot; Sand, medium and clay and silt alternating bands approximately 1-inch thick. Next 0.25 foot; SAND, coarse; some medium sand; beige; dry. Next 0.1 foot; SAND, very coarse; beige-brown; wet. Bottom 0.1 foot; SAND, medium; beige-brown; wet.
18	20	SS	5-7-6-6	0.3	--	SAND, medium to fine; brown; wet.
20	22	SS	6-7-5-5	1.4	48	Top 0.60 foot; SAND, coarse to very coarse; trace fine to coarse gravel; brown; wet. Next 0.2 foot; SAND, medium to fine; brown; wet. Next 0.2 foot; Clay and silt; wet. Next 0.1 foot; SAND, medium to fine; brown; wet. Bottom 0.3 foot; Clay and silt.
22	24	SS	2-3-4-4	2	74	Top 0.6 foot; Sand, very coarse to coarse; and fine gravel; trace coarse gravel; wet. Next 0.4 foot; SAND, medium; trace silt; brown; wet. Next 0.4 foot; CLAY. Next 0.2 foot; SAND, fine; orange-brown; wet. Next 0.1 foot; SAND, medium; brown; wet. Bottom 0.2 foot; Sand, fine; and silt and clay; wet.
24	26	SS	8-10-9-7	0.25	--	Wash: sand.
26	28	SS	6-7-4-5	2	1.3	Top 0.5 foot; SAND, coarse; beige; some medium; some very coarse; trace fine gravel; saturated. Next 0.3 foot; SAND, very coarse to coarse; orange-brown; wet. Next 0.05 foot; SAND, fine; wet. Next 0.1 foot; Clay and silt. Next 0.05 foot; SAND, medium. Next 0.25 foot; Sand, fine and silt. Next 0.05 foot; SAND, medium. Next 0.1 foot; SAND, fine. Next 0.1 foot; Silt and clay. Next 0.2 foot; SILT. Bottom 0.3 foot; Clay and silt, alternating color bands of orange, brown, black.
28	30		8-9-9-9	2	0.1	Top 1.0 foot; SAND; coarse to very coarse; beige, wet. Next 0.3 foot; SAND, medium; trace fine gravel; orange; wet. Next 0.1 foot; Silt and clay; brown. Next 0.3 foot; SAND, medium; orange. Next 0.1 foot; Silt and clay. Bottom 0.2 foot; SAND, medium; orange.
						END OF BOREHOLE.