



QUARTERLY OPERATION AND MAINTENANCE REPORT – FIRST QUARTER 2021

Active Industrial Uniform Superfund Site

63 West Merrick Road
Lindenhurst, New York

NYSDEC Site Number: 152125

Prepared For:

New York State Department of Environmental Conservation
625 Broadway
Albany, New York 12233
Contract #D009808

Prepared By:

HRP Associates, Inc.
197 Scott Swamp Road
Farmington, CT 06032

HRP #: DEC1004.OM

Issued On: June 2, 2021



TABLE OF CONTENTS

1.0	INTRODUCTION	1
2.0	SITE BACKGROUND	2
2.1	Site Location and Description	2
2.2	Site Geology and Hydrogeology.....	2
2.3	Background and Remedial History	2
2.4	Site Cleanup Objectives	3
3.0	OPERATIONS AND MAINTENANCE PROGRAM	4
3.1	Groundwater Extraction and Treatment System Operations and Maintenance	4
3.2	Site Maintenance Activities.....	4
4.0	MONITORING PROGRAM	6
4.1	Groundwater Sampling	6
5.0	MAINTENANCE ISSUES AND RECOMMENDED SOLUTIONS.....	10
6.0	FUTURE ACTIVITIES	11
7.0	PROGRESS TOWARD CLEANUP OBJECTIVES	12

Figures

Figure 1	Site Location
Figure 2	Site Map Showing Groundwater Sampling Locations
Figure 3	Site and Surrounding Area: Groundwater Sampling Locations
Figure 4	Inferred Groundwater Contour Map

Tables

Table 1	Groundwater Sampling Requirements and Schedule
Table 2	Groundwater Analytical Results

Appendices

Appendix A	Temporal Variations of Measured Parameters
Appendix B	Operation and Maintenance Reports

General Information

Project/Site Information:

Active Industrial Uniform Superfund Site
63 West Merrick Road
Lindenhurst, New York

Consultant Information:

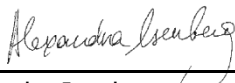
HRP Associates, Inc.
197 Scott Swamp Road
Farmington, CT 06032
Phone: 860-674-9570
E-mail: david.feinson@hrpassociates.com
Project Number: DEC1004.OM

Client Information:

New York State Department of
Environmental Conservation
625 Broadway
Albany, NY 12233

Report Date: 6/2/2021

Report Author:



A. Sasha Isenberg
Senior Project Scientist

Project Manager:



David Feinson
Project Manager

1.0 INTRODUCTION

HRP Associates, Inc. (HRP) has been contracted by the New York State Department of Environmental Conservation (NYSDEC) for Site management tasks under Standby Engineering Contract D009808. Under this contract, on-going Site management was assigned to HRP for the Active Industrial Uniform Superfund Site, NYSDEC Site No. 152125, located at 63 West Merrick Road, Lindenhurst, New York (herein referred to as the "Site"). The Site location is depicted on **Figure 1**. The Site is currently listed on the New York State Registry of Inactive Hazardous Waste Sites as a Class 2 site. This designation is for sites at which the disposal of hazardous waste has been confirmed and the presence of such hazardous waste or its components or breakdown products represents a significant threat to public health or the environment; or sites at which hazardous waste disposal has not been confirmed, but the site has been listed on the Federal National Priorities List (NPL). The United States Environmental Protection Agency (USEPA) oversaw the operations and maintenance (O&M) and Site management from 2001 to 2012. NYSDEC assumed responsibility for Site management in 2012. The on-going Site management was assigned to HRP in April 2020. This work assignment (WA) includes the following tasks:

- Task 1 – Scoping
- Task 2 – Site Management Plan
- Task 3 – Operation and Maintenance
- Task 4 – Monitoring and Reporting
- Task 5 – Periodic Review and Report
- Task 6 – Remedial System Optimization

This quarterly Operations and Maintenance (O&M) Report summarizes the O&M and monitoring activities completed during the first quarter of 2021 (January through March 2021). This report provides a description of the work performed throughout the reporting period, a discussion of the data obtained, and documents the relevant performance monitoring.

2.0 SITE BACKGROUND

2.1 Site Location and Description

The Active Industrial Uniform Site is a 0.5-acre parcel of land located at 63 West Merrick Road (a.k.a. West Montauk Highway, or State Route 27A). The Site is accessed via a driveway from Tompkins Lane. A fence with locked gate completely surrounds the property. The Site location is shown on **Figure 1**.

The following features are present at the Site:

- 35'x35' treatment shed;
- The remnants of two concrete floor slabs (east and northwest) where one-story concrete block buildings were formerly located (both buildings were demolished in February 1995);
- A paved parking area.

Site features are depicted on **Figure 2**, and general Site area features are shown on **Figure 3**.

2.2 Site Geology and Hydrogeology

According to the surficial materials map of New York, the surficial geology of the Site consists of outwash sand and gravel, defined as coarse to fine gravel with sand with variable thickness (2-20 meters). Based on reported observations from shallow hand auger soil vapor points installed during the 2007/2008 soil vapor evaluation, the upper ten feet of overburden in the vicinity of the Site is typified by loose medium to coarse sand. The ground surface and uppermost overburden varies from disturbed native sand to topsoil, silty sand, or asphalt.

Depth to groundwater ranged from 0.71 (in MW-109) to 9.76 (in RW-1) feet below ground surface, as measured during the January 2021 groundwater sampling event. Groundwater flows predominantly to the south. Groundwater contours and interpreted flow direction are shown on **Figure 4**.

2.3 Background and Remedial History

This facility operated as a dry cleaner and laundry between 1970 and 1987. Historically, there were two dry cleaning solvent storage areas at the Site: an underground solvent storage tank located on the northwest corner of the property that was removed in 1985, and two above ground solvent storage tanks that were located on a concrete pad near the southwest corner of the property and were removed in October of 1987.

Previous investigations revealed two areas of historical releases of tetrachloroethene (PCE) that have impacted the soil and groundwater at the Site. Remediation at the Site achieved soil cleanup objectives for commercial use and is considered complete. Residual contamination in the soil and groundwater is being managed under a Site Management Plan. A Groundwater Extraction & Treatment (GWE&T) System was installed to control a chlorinated solvent groundwater contamination plume emanating from the Site.

The GWE&T system operated between 2001 and 2018. The GWE&T system was shut down in 2018 under NYSDEC approval. The air stripping towers were decommissioned in late 2020 and removed from the Site in 2021.

2.4 Site Cleanup Objectives

The remedial goals for the Site have been established through the remedy selection process and documented in the Record of Decision (ROD), dated March 26, 1997. According to the ROD, the "overall goal is to meet all appropriate Standards, Criteria, and Guidance (SCGs) and to be protective of human health and the environment". The site-specific goals are presented below:

- Reduce, control, or eliminate to the extent practicable the contamination present within the soils on the Site;
- Eliminate the threat to surface waters by remediating to the extent practicable contaminated groundwater;
- Eliminate the potential for direct human or animal contact with the contaminated soils on the Site;
- Mitigate the impacts of contaminated groundwater to the environment;
- Prevent, to the extent possible, migration of contaminants;
- Provide for attainment of SCGs for groundwater quality at the limits of the area of concern, to the extent practicable; and
- Reduce the threat to homes from high groundwater.

3.0 OPERATIONS AND MAINTENANCE PROGRAM

The operations and maintenance program for the Active Industrial Uniform Site is presented below.

- Periodic groundwater monitoring, including reporting sampling data to NYSDEC;
- Inventory/inspections/maintenance of all groundwater monitoring wells;
- The GWE&T system was shut down on November 30, 2018 under NYSDEC approval. The air stripping towers were decommissioned in late 2020 and removed in 2021. As such, only building maintenance, including routine fire/safety inspection of the treatment plant, is performed on a monthly basis;
- Site maintenance, including (but not limited to) structures and Site grounds upkeep and maintenance (the length of the grass should not exceed six inches per Town ordinance) conducted on a monthly basis.

HRP performed the groundwater sampling at the Site as well as the Site maintenance activities. Summary reports prepared during each visit reports are included in **Appendix B**. Below is a summary of activities performed during the first quarter of 2021.

3.1 Groundwater Extraction and Treatment System Operations and Maintenance

The GWE&T consists of two 4-inch diameter extraction wells, RW-1 and RW-2, designed to pump groundwater to the treatment system housed in the system remediation building. RW-1 is located in the southwestern portion of the Site. RW-2 is located off-site, approximately 1,500 feet southwest of the Site (see **Figures 2 and 3**).

The GWE&T system was shut down in November 2018 and partially decommissioned in late 2020 under the approval of the NYSDEC. Prior to 2020, an inspection of RW-2 indicated that the screen had collapsed. The previous consultants' attempts at redevelopment of RW-2 were not successful.

3.2 Site Maintenance Activities

Routine Maintenance

- Monthly inspections of fire extinguisher and emergency lighting and exit sign tests were performed on January 26 and March 31, 2021. No issues were identified; emergency lighting passed the monthly tests.

Non-Routine Maintenance

- On January 4 and 5, 2021, Above Ground Storage Tank (AST) packing cleanout was completed between as part of the GWE&T system decommissioning activities.
- The Office of Fire Prevention and Control (OFPC) re-inspection of the Site was completed on January 7, 2021.

- An inspection of the fencing was conducted on January 19, 2021; and fencing repairs were conducted on January 21 and 22, 2021.
- On March 25, 2021, the two on-site ASTs were removed from the Site by Environmental Assessment and Remediations (EAR).

4.0 MONITORING PROGRAM

The monitoring program for the Active Industrial Uniform Superfund Site includes periodic sampling of select groundwater monitoring wells and two extraction wells (see Table 1 below), including 11 on-site monitoring wells (MW-101 through MW-108, MW-4D, MW-5S, and RW-1) and four off-site monitoring wells (MW-109, MW-111, MW-2S, and RW-2). The locations of the wells are depicted on **Figures 2** and **3**.

Table 1: Groundwater Sampling Requirements and Schedule

Sampling Location	Sampling Frequency			Analytical Parameters
	Monthly	Quarterly	Semi-Annual	VOC (EPA Method 8260)
MW-101			X	X
MW-102			X	X
MW-103		X		X
MW-104		X		X
MW-105		X		X
MW-106		X		X
MW-107		X		X
MW-108			X	X
MW-109			X	X
MW-111			X	X
MW-2S		X		X
MW-4D		X		X
MW-5S		X		X
RW-1		X		X
RW-2		X		X

4.1 Groundwater Sampling

On January 26 and 27, 2021, HRP conducted the semi-annual groundwater sampling event. Groundwater samples were collected from each monitoring well and submitted to a State-certified laboratory, Eurofins/TestAmerica, and analyzed for VOCs via the EPA 8260 method. The analytical results are summarized in Table 2 below. Concurrently with the sampling activities, a groundwater elevation survey of select monitoring wells was performed.

Table 2: Groundwater Analytical Results

Monitoring Well ID and Location	Site-Specific Contaminant of Concern Concentrations, ug/L							
	PCE		TCE		Cis-1,2-DCE		Vinyl Chloride	
Sampling Period	2020 Q4	2021 Q1	2020 Q4	2021 Q1	2020 Q4	2021 Q1	2020 Q4	2021 Q1
MW-4D (on-site)	95	29	13	4.2	2	1.3	<1	<1
MW-5S (on-site)	0.34	<1	<1	<1	<1	<1	<1	<1
MW-101 (on-site)	NS	1.2	NS	0.7	NS	<1	NS	<1
MW-102 (on-site)	NS	2.2	NS	0.45	NS	<1	NS	<1
MW-103 (on-site)	5.3	2.7	0.65	0.61	<1	<1	<1	<1
MW-104 (on-site)	50	31	5.8	3.2	1.6	0.34	<1	<1
MW-105 (on-site)	0.5	2.2	0.43	0.5	0.25	280	<1	17
MW-106 (on-site)	11	13	2.8	5.4	13	7.0	2.4	0.64
MW-107 (on-site)	1.2	4.2	0.53	0.84	<1	0.3	<1	<1
MW-108 (on-site)	NS	9.8	NS	0.64	NS	<1	NS	<1
RW-1 (on-site)	<1	0.43	<1	<1	<1	<1	<1	<1
MW-2S (off-site)	1.8	2.9	0.34	<1	3.2	0.9	<1	<1
MW-109 (off-site)	NS	1.6	NS	2.5	NS	2.7	NS	<1
MW-111 (off-site)	NS	<1	NS	<1	NS	<1	NS	<1
RW-2 (off-site)	<1	<1	<1	<1	<1	<1	<1	<1
Class GA Groundwater Standard, ug/L	5		5		5		2	

Notes: **1** Parameter reported at a concentration greater than applicable regulatory standard/criterion
ND = not detected; NS = not sampled; ug/L = microgram per liter

The above table summarizes the on-site and off-site concentrations of the site-specific contaminants of concern (COCs), which include PCE and associated degradation products (trichloroethylene [TCE], cis-1,2-dichloroethylene [cis-1,2-DCE], and vinyl chloride). The results were compared to the previous, fourth quarter of 2020, findings. The previous data is included in the table for comparison purposes. Charts showing the variations of PCE, TCE, cis-1,2-DCE and vinyl chloride in the monitoring wells are provided in **Appendix A**. Laboratory reports are provided directly to NYSDEC by the contracted laboratory.

The findings of the sampling are discussed below.

- **MW-4D:** The monitoring well is located in the southwestern portion of the Site and downgradient of the historical dry-cleaning activities. The well is screened at 60 to 70 feet below grade (fbg). PCE was detected in this monitoring well at concentrations exceeding the Class GA Groundwater Standards, which is consistent with previous sampling events. TCE and cis-1,2-DCE were detected at concentrations below the Class GA Standards. Vinyl chloride was not detected above the laboratory detection limit.

- MW-5S: The monitoring well is located in the western portion of the Site and screened at 14 to 24 fbg. None of the contaminants of concern were detected above the laboratory detection limits.
- MW-101: The monitoring well is located on the northeastern portion of the Site and screened at 5-15 feet bgs. PCE and TCE were detected at concentrations below the Class GA Standards. cis-1,2-DCE and vinyl chloride were not detected above the laboratory detection limits.
- MW-102: The monitoring well is located on the north-central portion of the Site and screened at 5-15 feet bgs. PCE and TCE were detected at concentrations below the Class GA Standards. cis-1,2-DCE and vinyl chloride were not detected above the laboratory detection limits.
- MW-103: The monitoring well is located in the northern portion of the Site and screened at 5 to 15 fbg. Concentrations of PCE and TCE were detected at concentrations below the applicable Class GA Standards. Cis-1,2-DCE and vinyl chloride were not detected above the laboratory detection limit.
- MW-104: The monitoring well is located on the western portion of the Site and screened at 5 to 15 fbg. PCE was detected in exceedance of the Class GA Standards. TCE and cis-1,2-DCE were detected at concentrations below the Class GA Standards. Vinyl chloride was not detected above the laboratory detection limit.
- MW-105: The monitoring well is located near the southwestern corner of the treatment building and screened at 5 to 15 fbg. PCE and TCE were detected below the Class GA Standards. Cis-1,2-DCE and vinyl chloride exceeded the Class GA Standards.
- MW-106: The monitoring well is located in the southeastern corner of the Site and screened at 5 to 15 fbg. PCE, TCE, and cis-1,2-DCE were detected in exceedance of the Class GA Standards. Vinyl chloride was detected below the Class GA Standards.
- MW-107: The monitoring well is located in the southern portion of the Site and screened at 5 to 15 fbg. PCE, TCE, and cis-1,2-DCE were detected at concentrations below the Class GA Standards. Vinyl chloride was not detected above the laboratory detection limits.
- MW-108: The monitoring well is located in the southwestern corner of the Site and screened at 5 to 15 fbg. PCE exceeded the Class GA standards. TCE was detected at concentrations below the Class GA Standards. Cis-1,2-DCE and vinyl chloride were not detected above the laboratory detection limits.
- MW-109: The monitoring well is located on Orchard Street, approximately 1,700 feet to the southwest of the Site and screened at 25-35 feet bgs. PCE, TCE, and cis-1,2-DCE were detected below the Class GA Standards. Vinyl chloride was not detected above the laboratory detection limits.
- MW-111: The monitoring well is located on Lane Street, approximately 500 feet to the southwest of the Site, and screened at 25-35 feet bgs. None of the contaminants of concern were detected above the laboratory detection limits.
- RW-1: The 4-inch extraction well is located in the southwestern portion of the Site and screened at 10-35 feet bgs. Concentrations of PCE were detected at concentrations below the applicable Class GA Standards. TCE, cis-1,2-DCE, and vinyl chloride were not detected above the laboratory detection limit.

- RW-2: The 4-inch extraction well is located on Orchard Street, approximately 1,500 feet to the southwest of the Site, and screened at 12-37 feet bgs. None of the contaminants of concern were detected above the laboratory detection limits.
- MW-2S: The monitoring well is located on Tompkins Street, approximately 200 feet to the south of the Site and screened at 12 to 22 fbg. PCE and cis-1,2-DCE were detected below the Class GA Standards. TCE and vinyl chloride were not detected above the laboratory detection limit.

5.0 MAINTENANCE ISSUES AND RECOMMENDED SOLUTIONS

On March 31, 2021, HRP inspected the Site following the removal of the ASTs with packing material. Wires and piping were observed hanging and cut at the point of entry into the building. One junction box was open. Two areas of staining were noted on the asphalt on the western side of the building. It is expected that these items will be addressed during the second quarter of 2021.

6.0 FUTURE ACTIVITIES

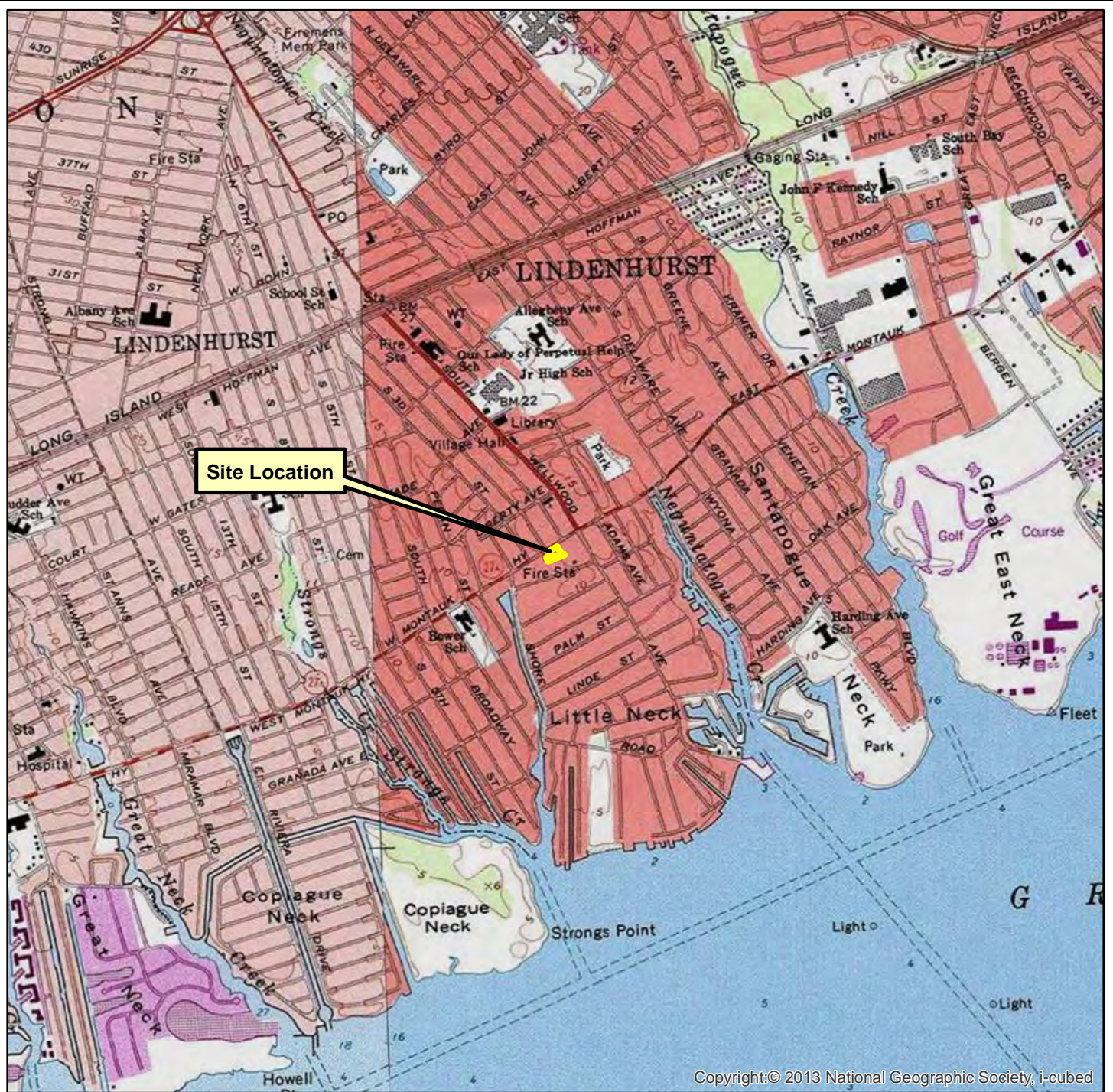
Future maintenance and monitoring activities at the Site include the following:

- Routine monthly maintenance activities will continue; and
- Quarterly groundwater sampling is scheduled to be completed in the second quarter of 2021.

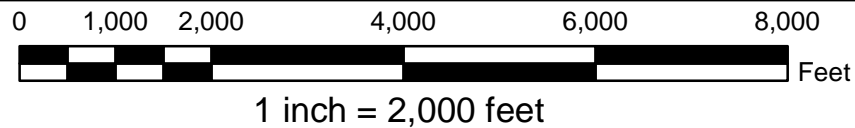
7.0 PROGRESS TOWARD CLEANUP OBJECTIVES

Based on review of O&M field notes and laboratory analysis of samples collected from the groundwater well network, additional monitoring is recommended to monitor the natural attenuation of the dissolved-phase chlorinated solvents detected in groundwater.

FIGURES



Copyright:© 2013 National Geographic Society, i-cubed






USGS Quadrangle Information
 Quad ID: 40073-F3
 Name: Bay Shore West, New York
 Date Rev: 1978
 Date Pub: 1979

Figure 1
Site Location
63 West Montauk Highway
Lindenhurst, New York
NYSDEC Site No. 152125
HRP # DEC1004.OM
Scale 1" = 2,000'

HRP
 MOVE YOUR ENVIRONMENT FORWARD
 ONE FAIRCHILD SQUARE
 SUITE 110
 CLIFTON PARK, NY 12065
 (518) 877-7101
 HRPASSOCIATES.COM

Legend

-  Groundwater Recovery Well
-  Groundwater Monitoring Well
-  Approximate Property Line



MOVE YOUR ENVIRONMENT FORWARD

ONE FAIRCHILD SQUARE
SUITE 110
CLIFTON PARK, NY 12065
(518) 877-7101
HRPASSOCIATES.COM

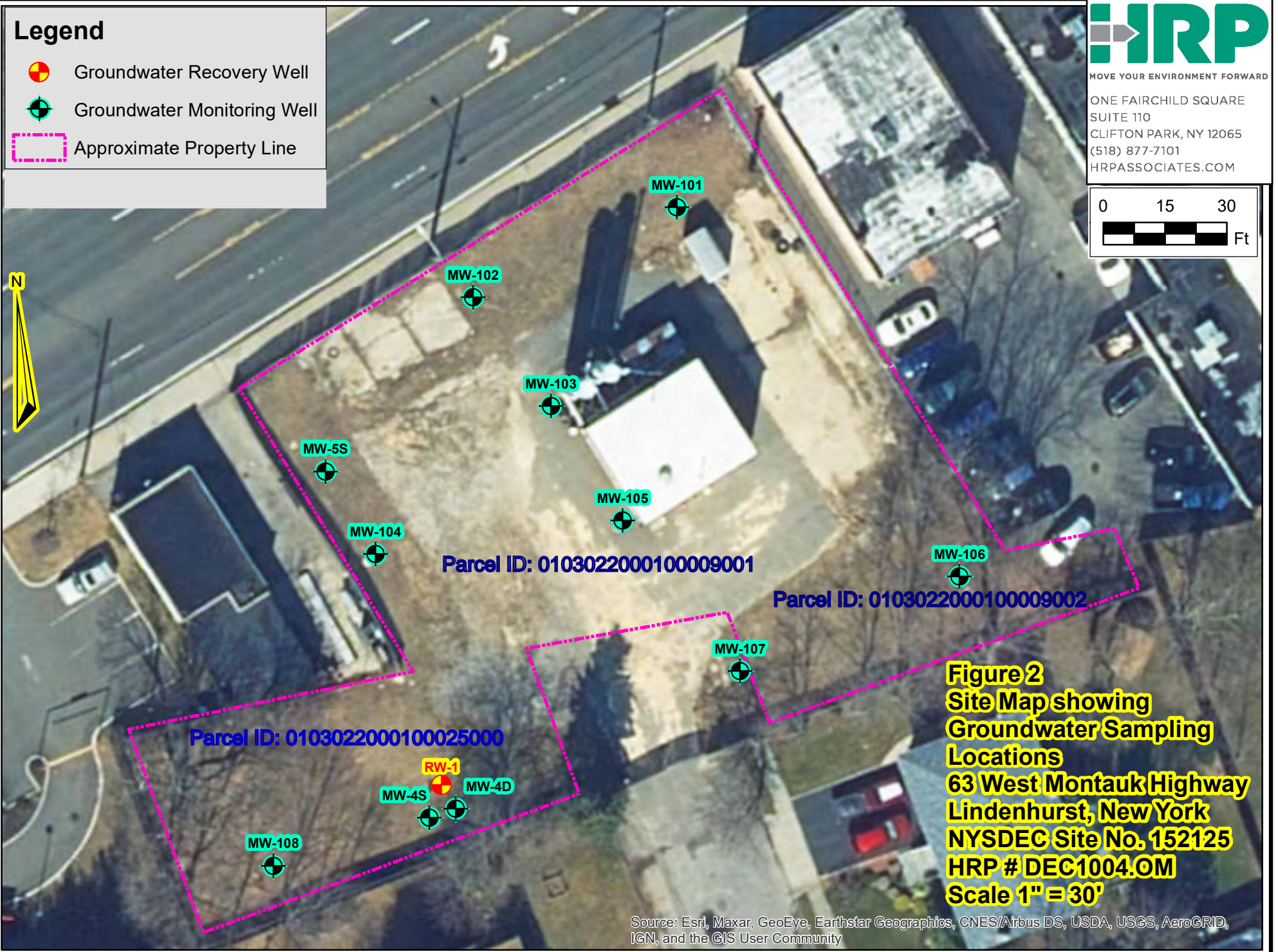


Figure 2
Site Map showing
Groundwater Sampling
Locations
63 West Montauk Highway
Lindenhurst, New York
NYSDEC Site No. 152125
HRP # DEC1004.OM
Scale 1" = 30'

Source: Esri, Maxar, GeoEye, Earthstar Geographics, CNES/Airbus DS, USDA, USGS, AeroGRID, IGN, and the GIS User Community

Path: S:\Data\NYSDEC - NEW YORK STATE DEPARTMENT OF ENVIRONMENTAL CONSERVATION\BABYLON\63 WEST MERRICK ROAD\DEC1004\OM\GIS\Figure 3 - 63 West Montauk.mxd



Legend

- Groundwater Recovery Well
- Groundwater Monitoring Well
- Approximate Property Line



HRP
MOVE YOUR ENVIRONMENT FORWARD

ONE FAIRCHILD SQUARE
SUITE 110
CLIFTON PARK, NY 12065
(518) 877-7101
HRPASSOCIATES.COM

Site and Surrounding Area:
Groundwater Sampling Locations

63 West Montauk Highway
Lindenhurst, New York
NYSDEC Site No. 152125

ASI
DESIGNED BY:

BOB
DRAWN BY:

DJF
REVIEWED BY:

11X17
SHEET SIZE:

08/04/2020

DATE:

DEC1004.OM
PROJECT NUMBER:

North

1 in = 150 ft
0 75 150
Ft

FIGURE
3

Path: S:\Data\NYSDEC - NEW YORK STATE DEPARTMENT OF ENVIRONMENTAL CONSERVATION\BABYLON\63 WEST MERRICK ROAD\DEC1004\OM\GIS\Figure 4 - Inferred Groundwater January 2021.mxd

Monitoring Well ID	Groundwater Elevation, feet
MW-101	1.9
MW-102	1.89
MW-103	1.86
MW-104	1.97
MW-105	1.79
MW-106	1.76
MW-107	1.73
MW-108	1.71
MW-109	0.5
MW-111	1.15
MW-2S	1.43
MW-4D	1.7
MW-4S	1.7
MW-5S	1.89
RW-1	1.71
RW-2	0.41



Source: Esri, Maxar, GeoEye, Earthstar Geographics, CNES/Airbus DS, USDA, USGS, AeroGRID, IGN, and the GIS User Community



HRP
MOVE YOUR ENVIRONMENT FORWARD

ONE FAIRCHILD SQUARE
SUITE 110
CLIFTON PARK, NY 12065
(518) 877-7101
HRPASSOCIATES.COM

Inferred Groundwater Contour Map
January 2021

63 West Montauk Highway
Lindenhurst, New York
NYSDEC Site No. 152125

ASI
DESIGNED BY:


BOB
DRAWN BY:

DJF
REVIEWED BY:

11X17
SHEET SIZE:

03/22/2021
DATE:

DEC1004.OM
PROJECT NUMBER:

 **North**

1 in = 30 ft

0 15 30
Ft

FIGURE

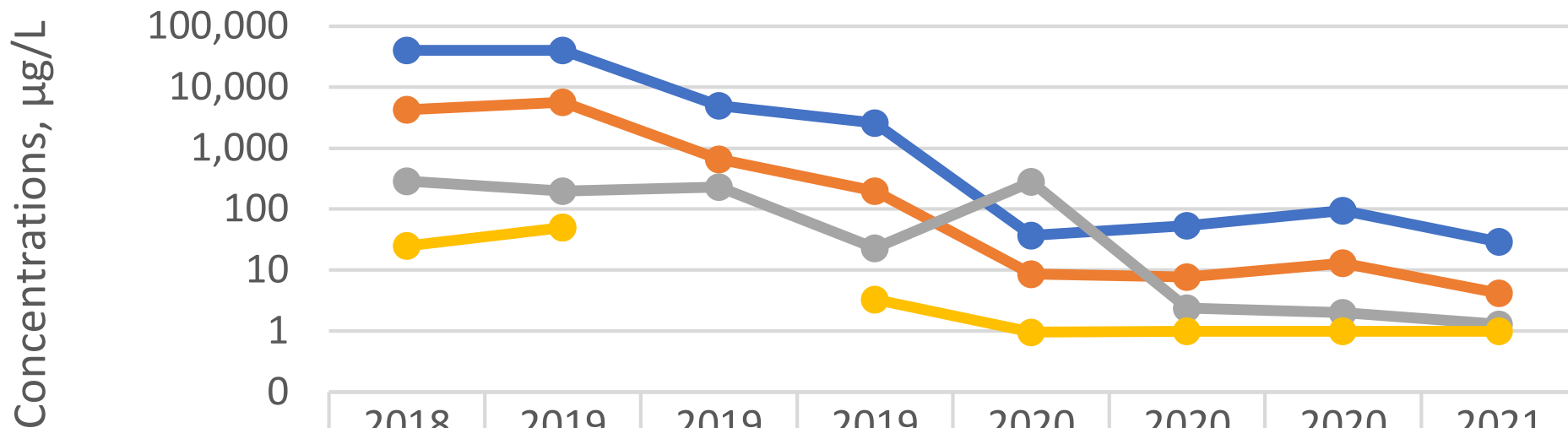
4

APPENDIX A

Temporal Variations of VOCs Concentrations

Temporal Variations of VOCs Concentrations
Active Industrial Uniform Superfund Site #152125
63 West Merrick Road, Lindenhurst, New York
HRP# DEC1004.OM

MW-4D

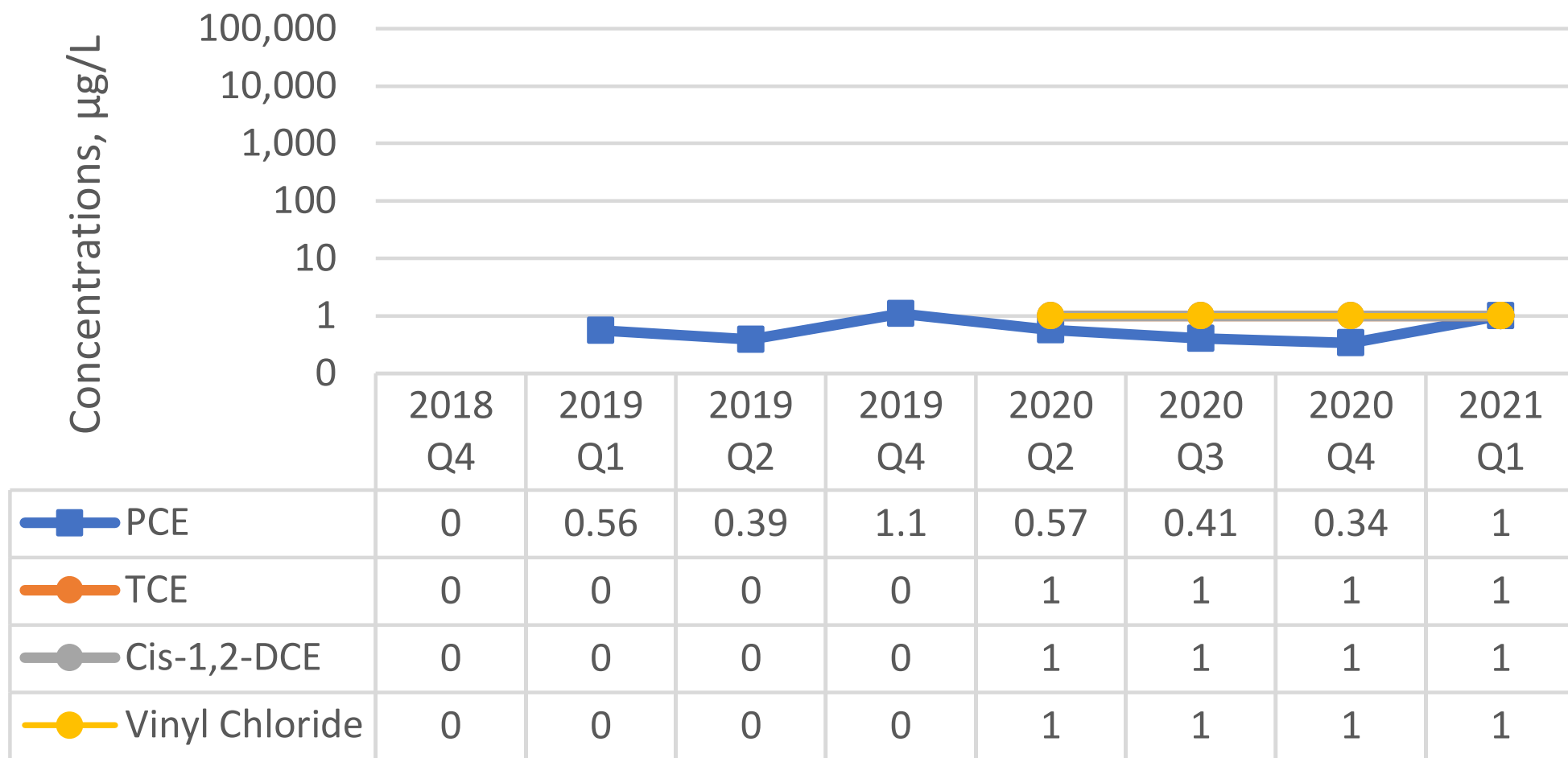


—●— PCE	40,000	40,000	5,000	2,600	37	54	95	29
—●— TCE	4,300	5,700	650	200	8.7	7.8	13	4.2
—●— Cis-1,2-DCE	290	200	230	23	280	2.4	2	1.3
—●— Vinyl Chloride	25	50	0	3.3	0.96	1	1	1

Sampling period

Temporal Variations of VOCs Concentrations
Active Industrial Uniform Superfund Site #152125
63 West Merrick Road, Lindenhurst, New York
HRP# DEC1004.OM

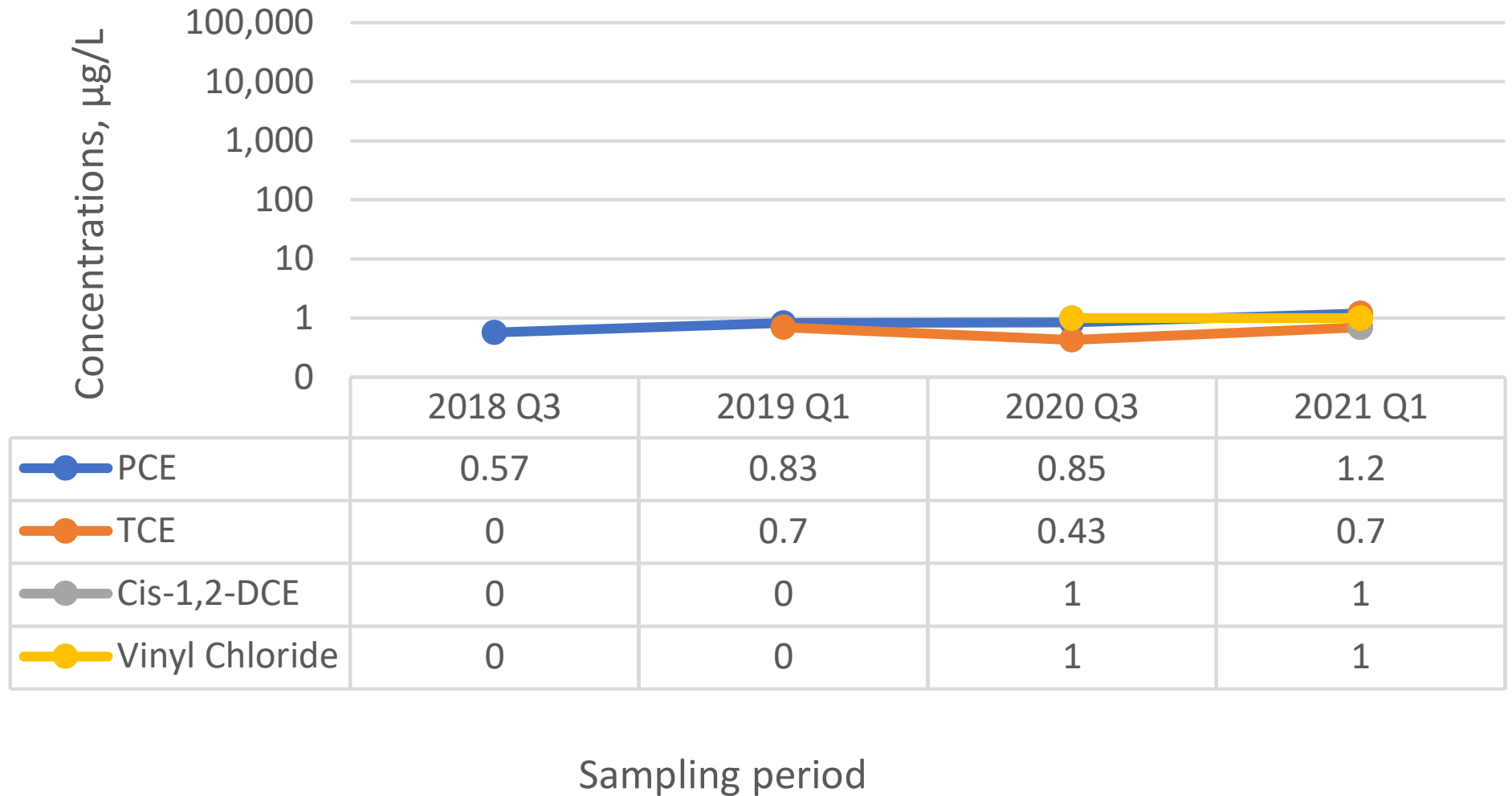
MW-5S



Sampling period

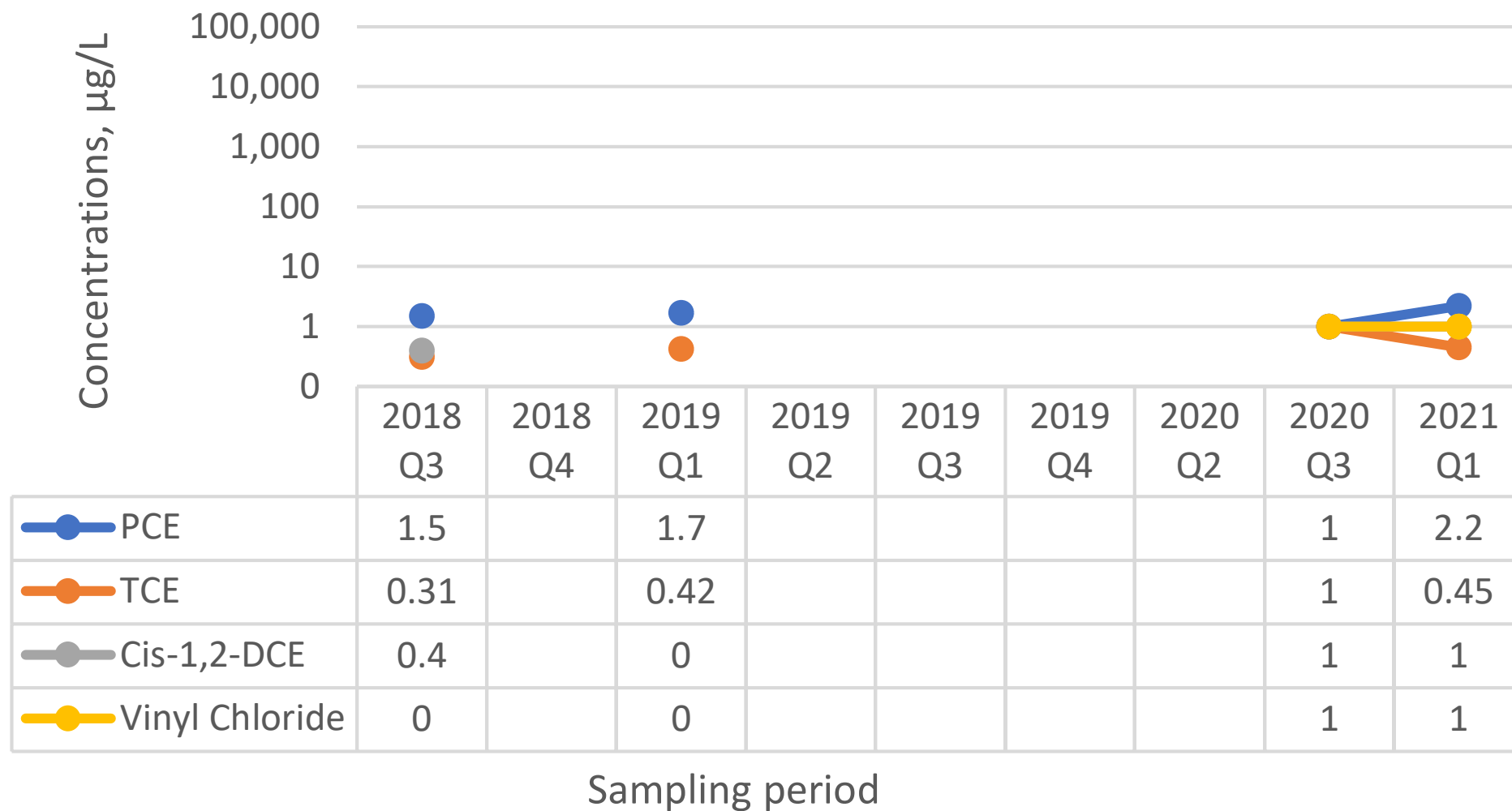
Temporal Variations of VOCs Concentrations
Active Industrial Uniform Superfund Site #152125
63 West Merrick Road, Lindenhurst, New York
HRP# DEC1004.OM

MW-101



Temporal Variations of VOCs Concentrations
Active Industrial Uniform Superfund Site #152125
63 West Merrick Road, Lindenhurst, New York
HRP# DEC1004.OM

MW-102

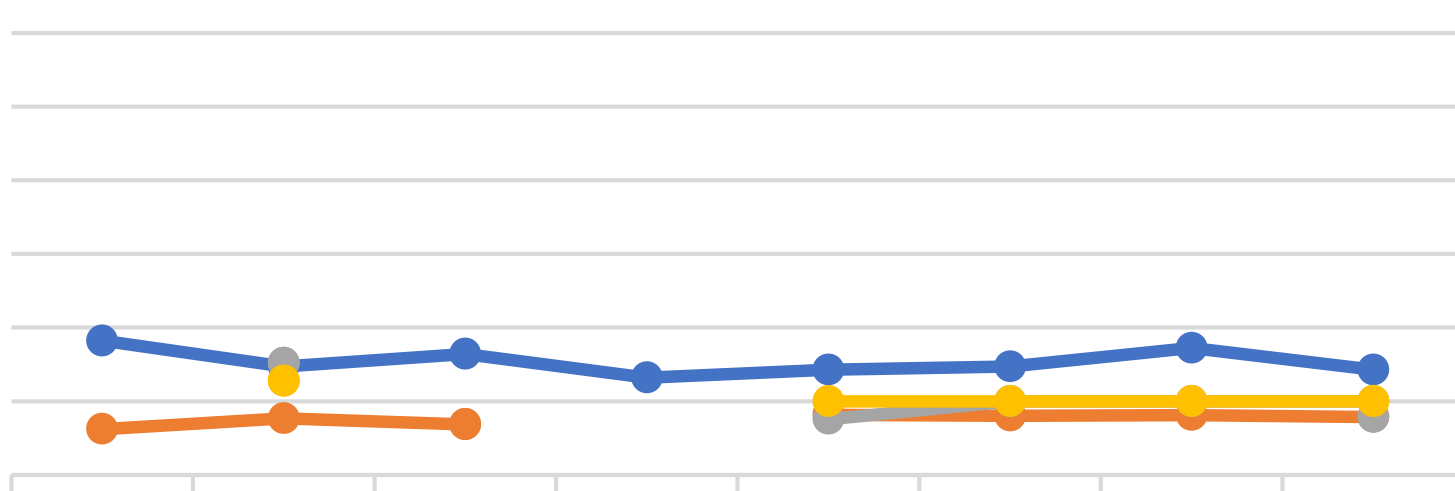


Temporal Variations of VOCs Concentrations
Active Industrial Uniform Superfund Site #152125
63 West Merrick Road, Lindenhurst, New York
HRP# DEC1004.OM

MW-103

Concentrations, µg/L

100,000
10,000
1,000
100
10
1
0

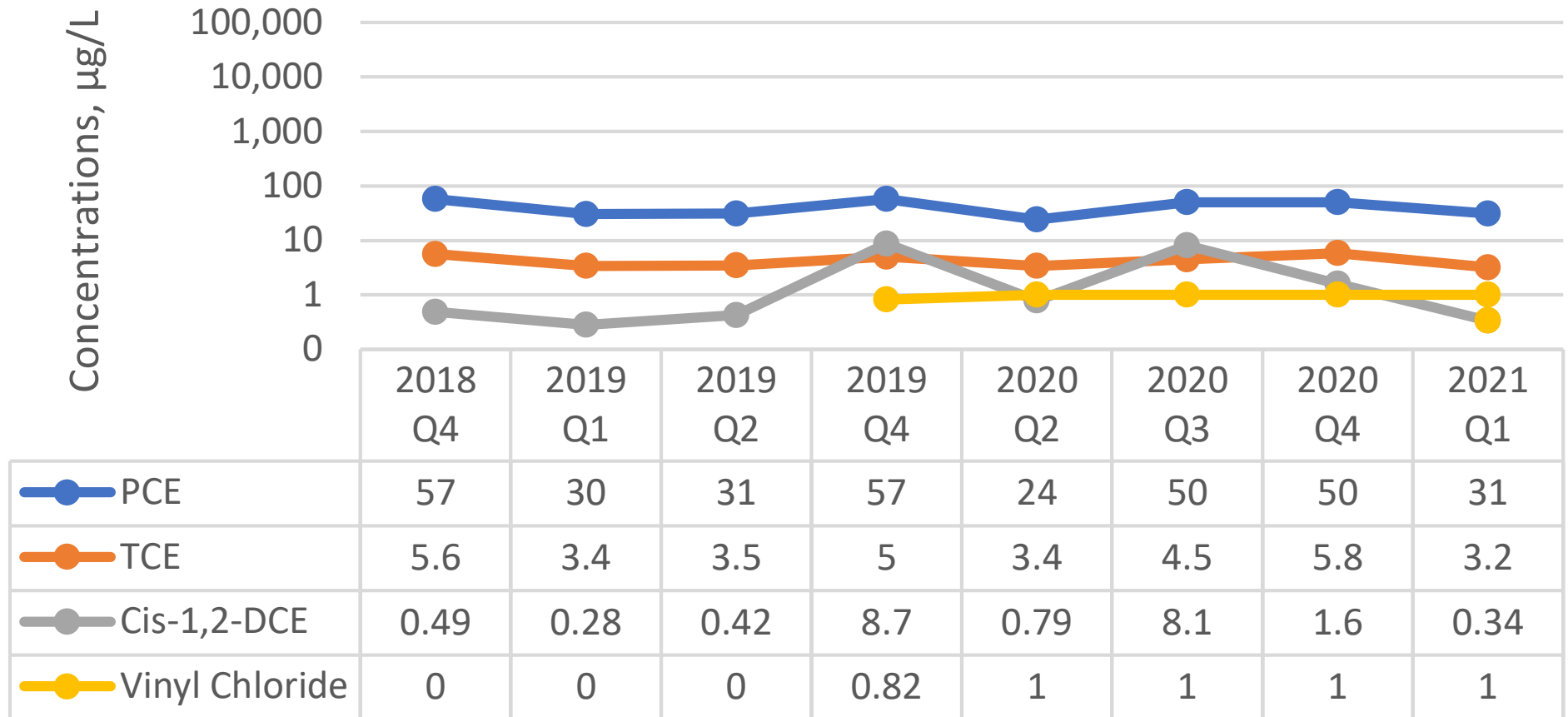


—●— PCE	6.7	3	4.4	2.1	2.7	3	5.3	2.7
—●— TCE	0.42	0.59	0.49	0	0.66	0.64	0.65	0.61
—●— Cis-1,2-DCE	0	3.3	0	0	0.57	1	1	1
—●— Vinyl Chloride	0	1.9	0	0	1	1	1	1

Sampling period

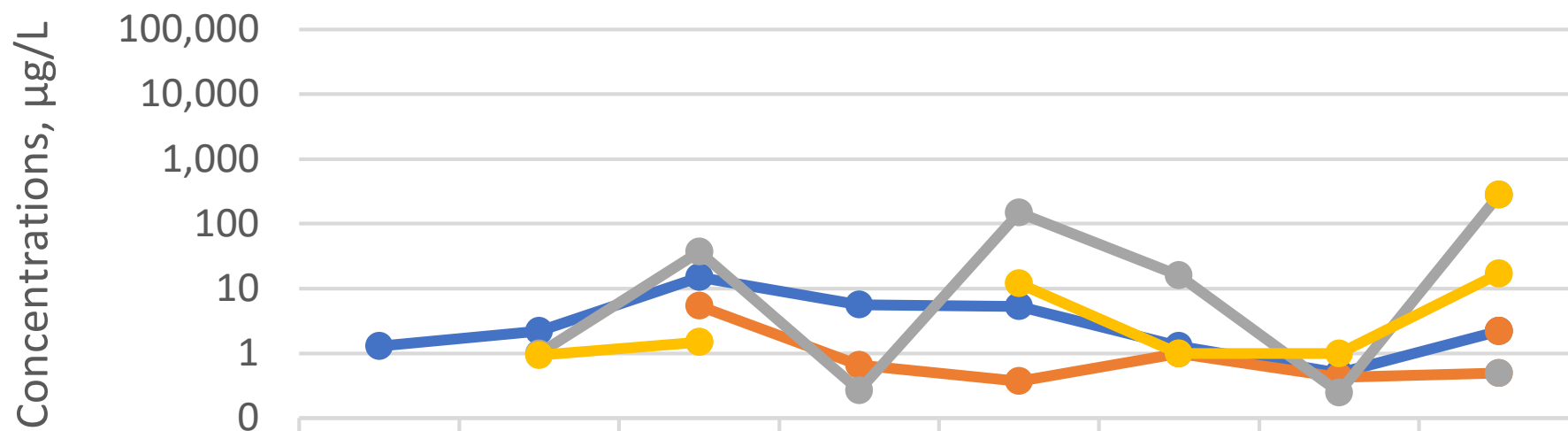
Temporal Variations of VOCs Concentrations
Active Industrial Uniform Superfund Site #152125
63 West Merrick Road, Lindenhurst, New York
HRP# DEC1004.OM

MW-104



Temporal Variations of VOCs Concentrations
Active Industrial Uniform Superfund Site #152125
63 West Merrick Road, Lindenhurst, New York
HRP# DEC1004.OM

MW-105



	2018 Q4	2019 Q1	2019 Q2	2019 Q4	2020 Q2	2020 Q3	2020 Q4	2021 Q1
● PCE	1.3	2.2	15	5.6	5.3	1.3	0.5	2.2
● TCE	0	0	5.4	0.66	0.37	1	0.43	0.5
● Cis-1,2-DCE	0	1	37	0.27	150	16	0.25	280
● Vinyl Chloride	0	0.94	1.5	0	12	1	1	17

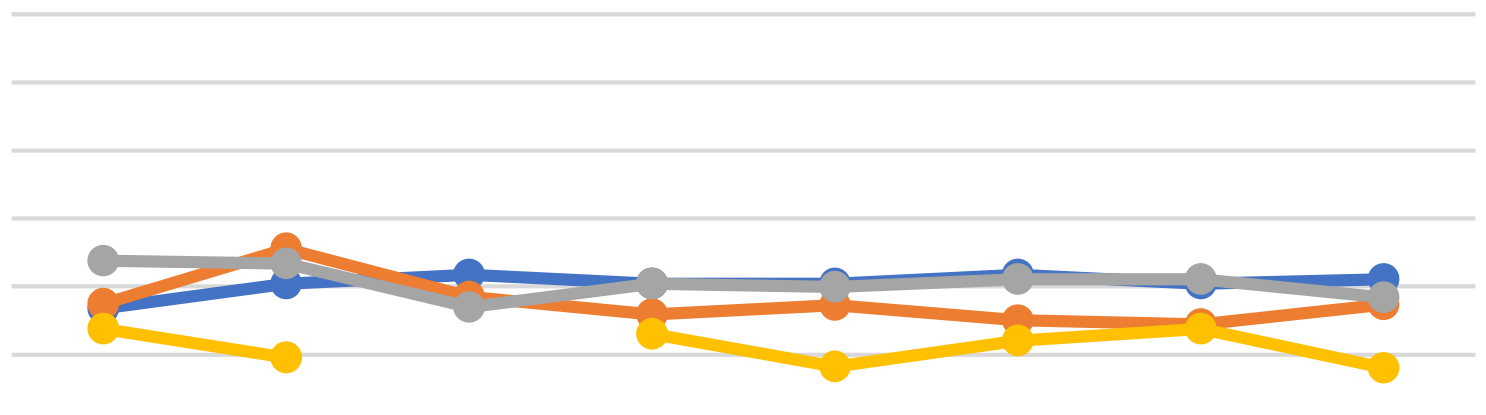
Sampling period

Temporal Variations of VOCs Concentrations
Active Industrial Uniform Superfund Site #152125
63 West Merrick Road, Lindenhurst, New York
HRP# DEC1004.OM

MW-106

Concentrations, µg/L

100,000
10,000
1,000
100
10
1
0

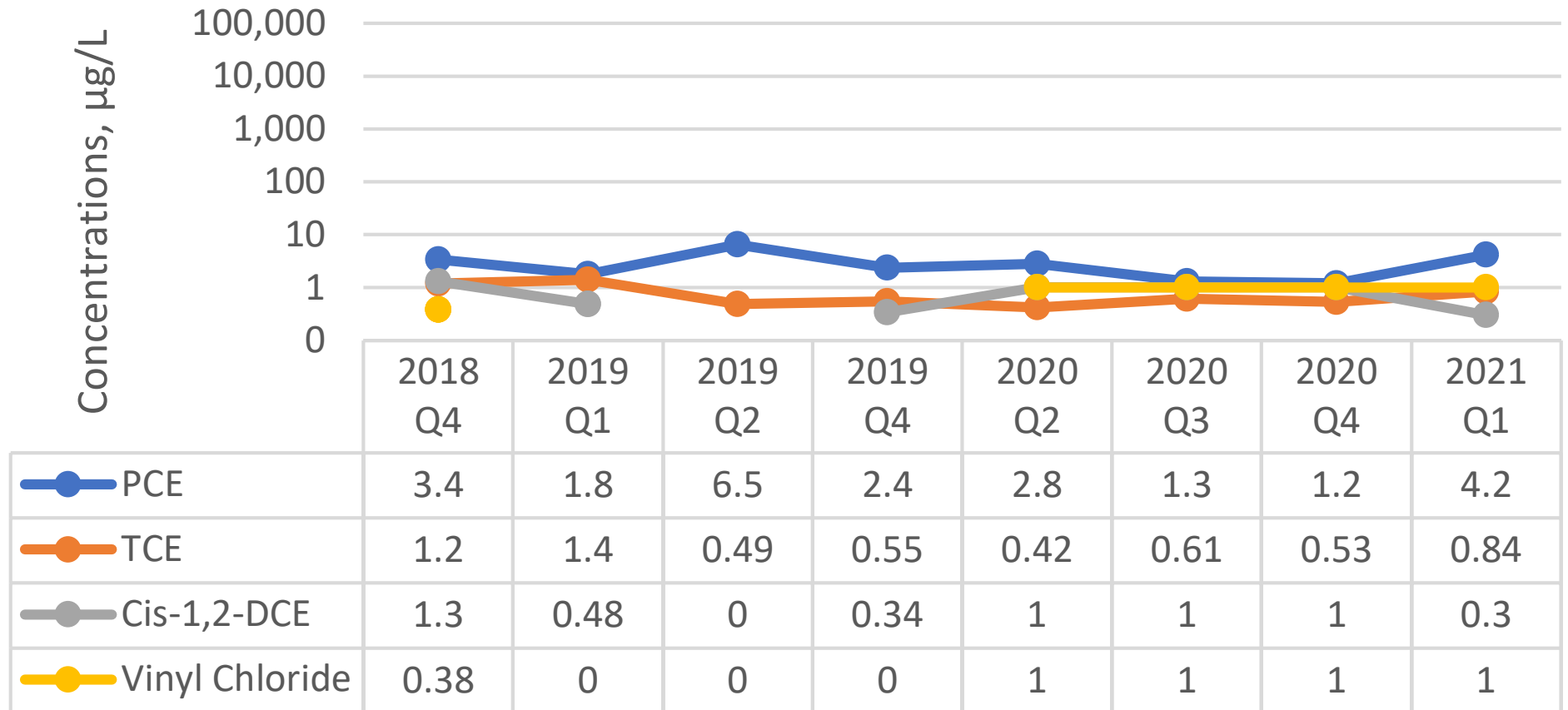


	2018 Q4	2019 Q1	2019 Q2	2019 Q4	2020 Q2	2020 Q3	2020 Q4	2021 Q1
PCE	4.8	11	15	11	11	15	11	13
TCE	5.6	36	7.1	3.9	5.3	3.2	2.8	5.4
Cis-1,2-DCE	24	22	5	11	9.8	13	13	7
Vinyl Chloride	2.4	0.9	0	2	0.67	1.6	2.4	0.64

Sampling period

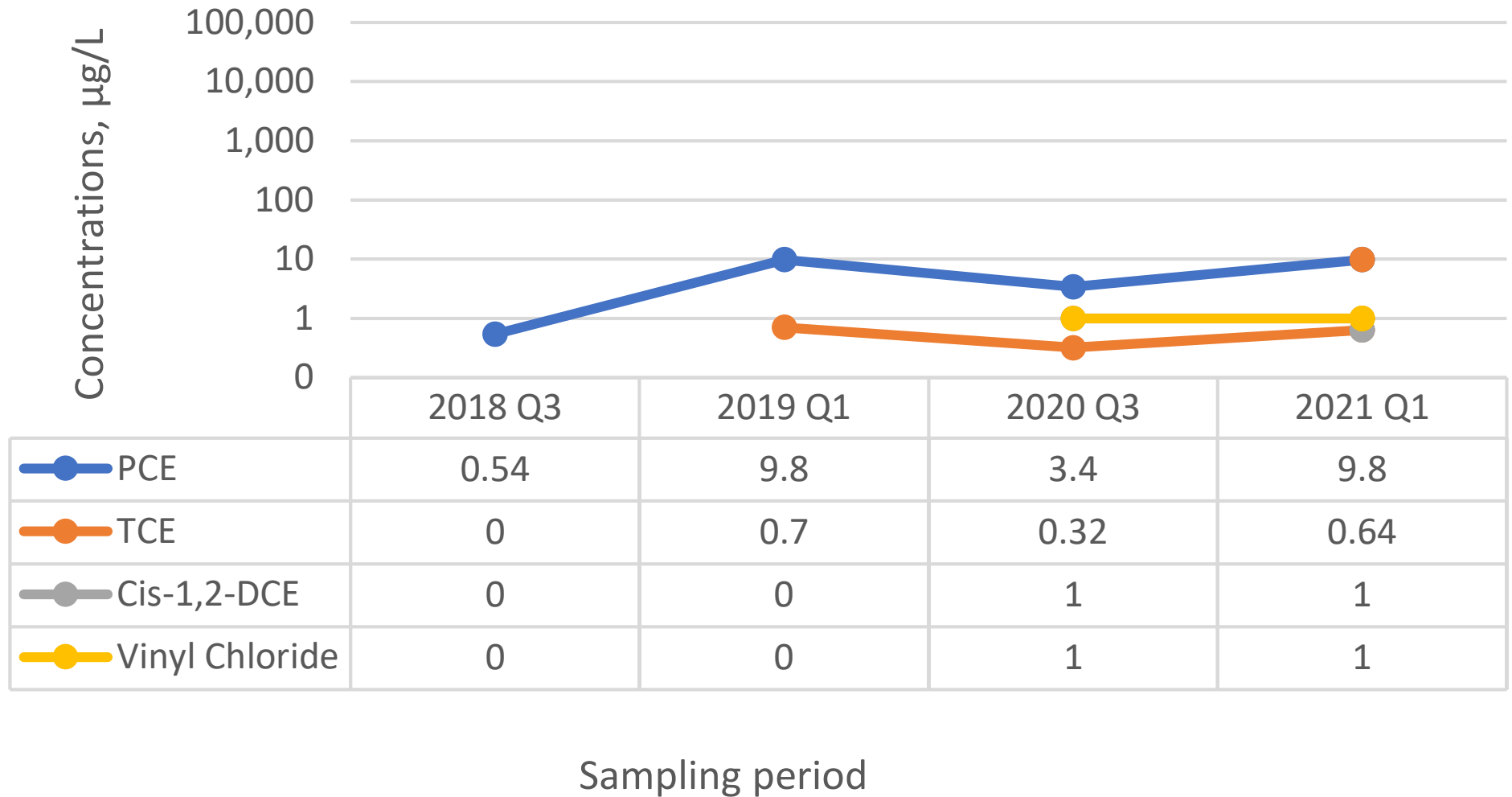
Temporal Variations of VOCs Concentrations
Active Industrial Uniform Superfund Site #152125
63 West Merrick Road, Lindenhurst, New York
HRP# DEC1004.OM

MW-107



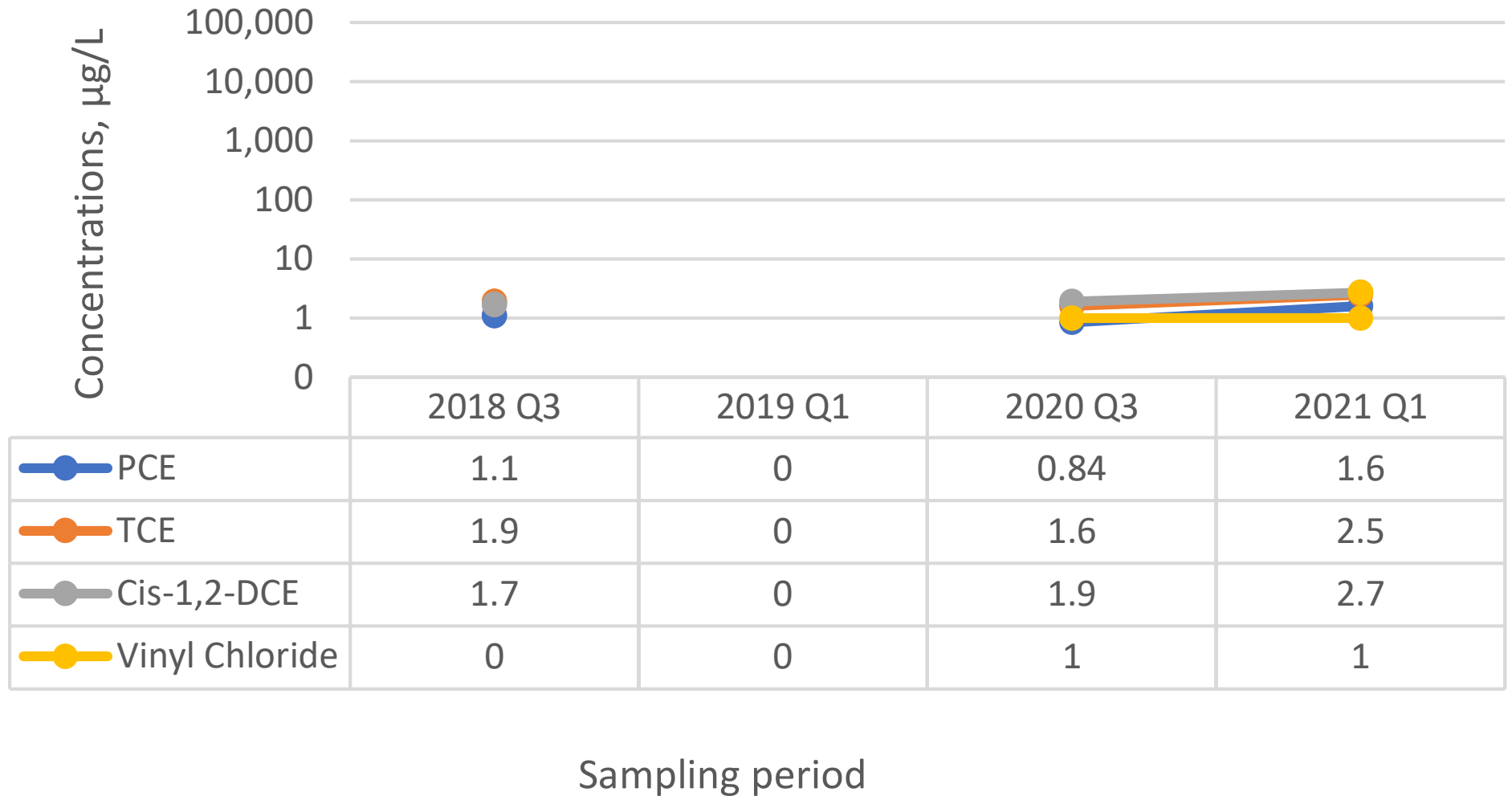
Temporal Variations of VOCs Concentrations
Active Industrial Uniform Superfund Site #152125
63 West Merrick Road, Lindenhurst, New York
HRP# DEC1004.OM

MW-108



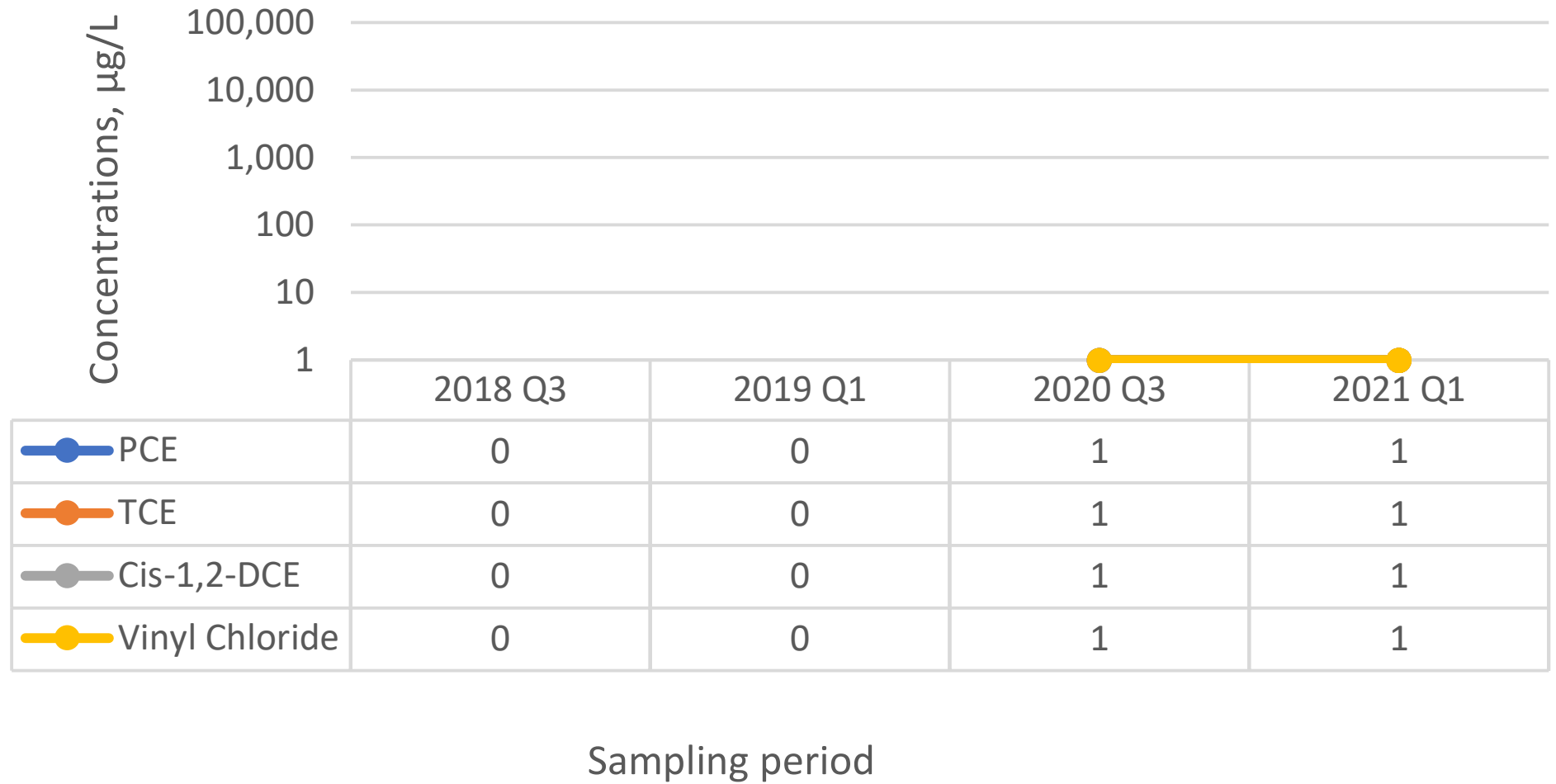
Temporal Variations of VOCs Concentrations
Active Industrial Uniform Superfund Site #152125
63 West Merrick Road, Lindenhurst, New York
HRP# DEC1004.OM

MW-109



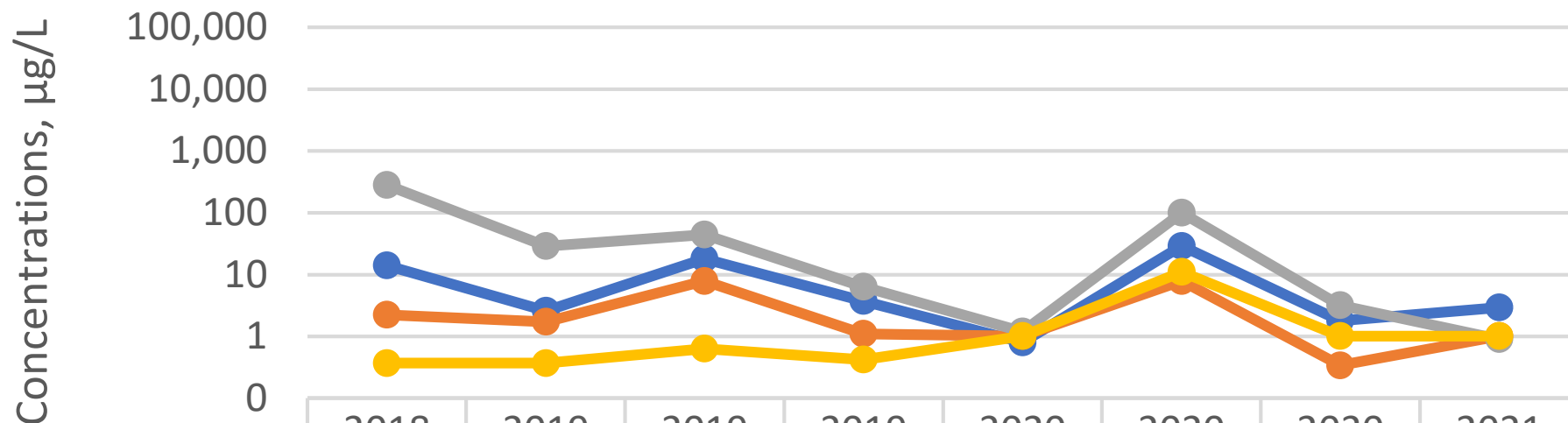
Temporal Variations of VOCs Concentrations
Active Industrial Uniform Superfund Site #152125
63 West Merrick Road, Lindenhurst, New York
HRP# DEC1004.OM

MW-111



Temporal Variations of VOCs Concentrations
Active Industrial Uniform Superfund Site #152125
63 West Merrick Road, Lindenhurst, New York
HRP# DEC1004.OM

MW-2S

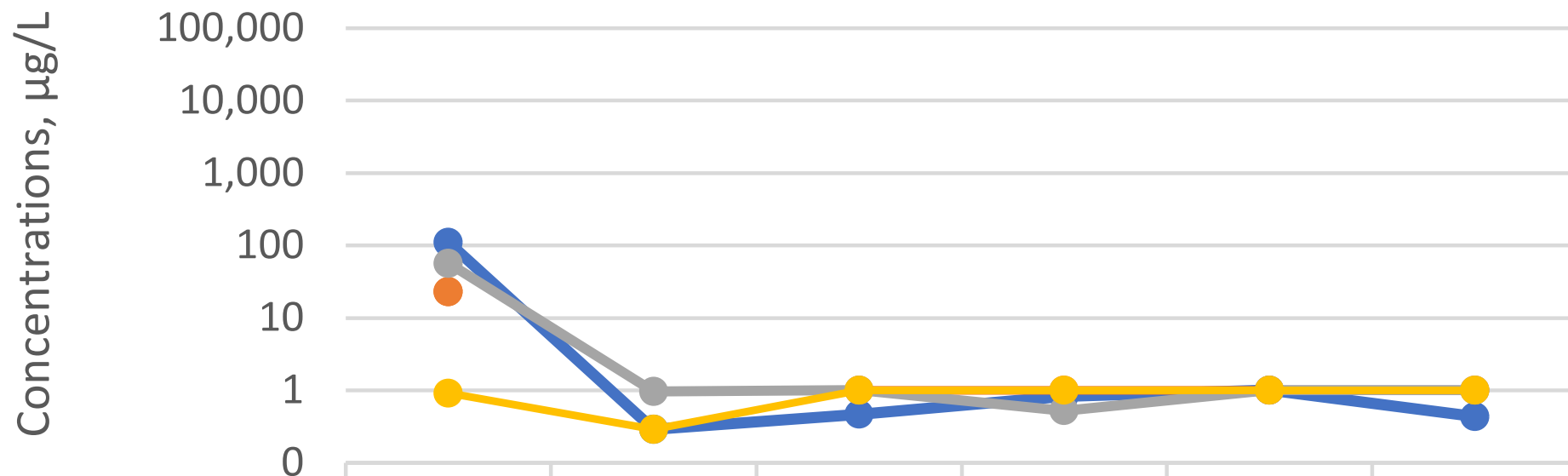


—●— PCE	14	2.6	18	3.7	0.8	29	1.8	2.9
—●— TCE	2.2	1.7	7.9	1.1	1	7.9	0.34	1
—●— Cis-1,2-DCE	280	29	44	6.3	1.2	100	3.2	0.9
—●— Vinyl Chloride	0.37	0.37	0.63	0.42	1	11	1	1

Sampling period

Temporal Variations of VOCs Concentrations
Active Industrial Uniform Superfund Site #152125
63 West Merrick Road, Lindenhurst, New York
HRP# DEC1004 OM

RW-1

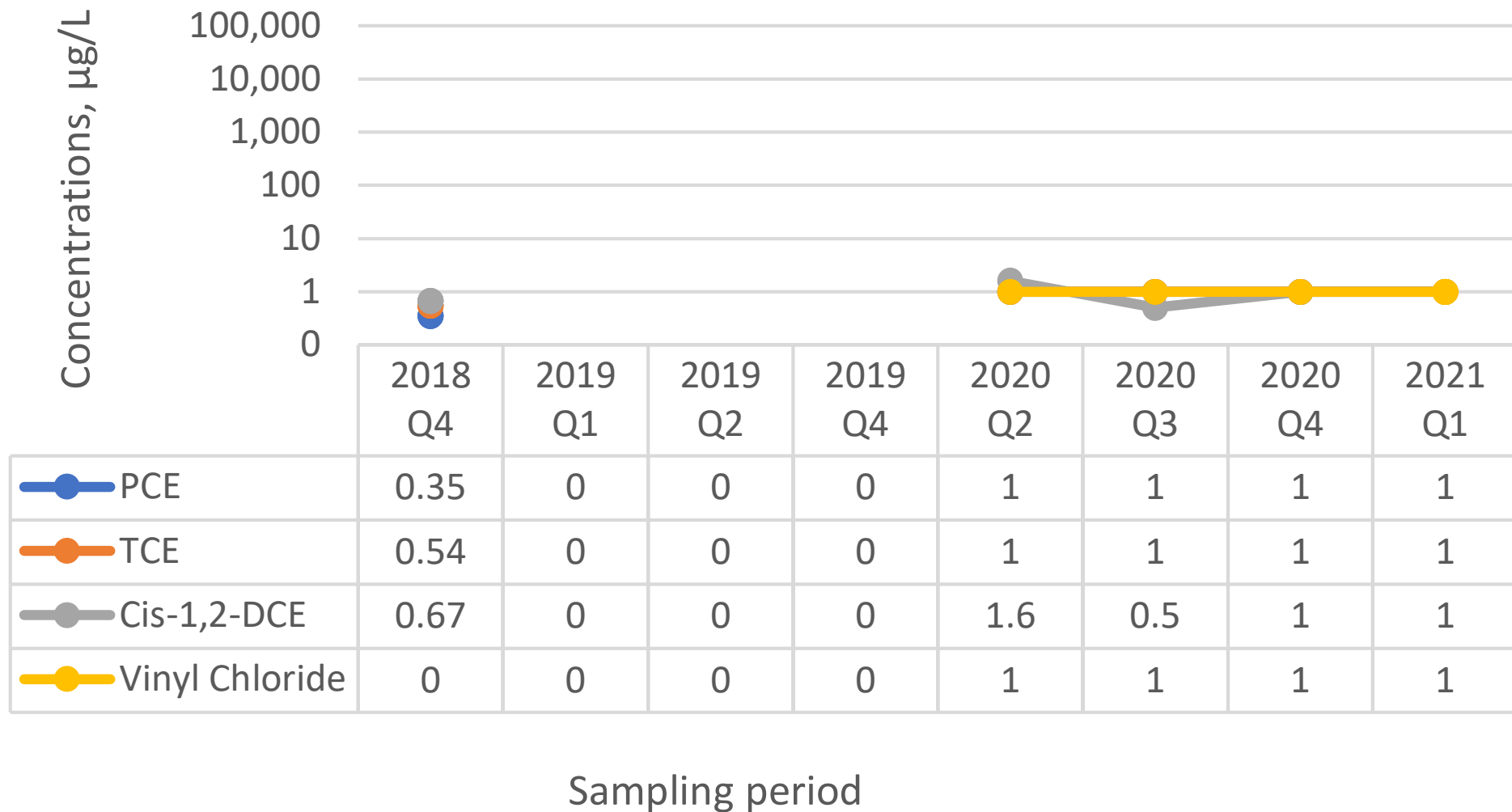


	2018 Q4	2019 Q4	2020 Q2	2020 Q3	2020 Q4	2021 Q1
● PCE	110	0.29	0.47	0.83	1	0.43
● TCE	23	0	1	1	1	1
● Cis-1,2-DCE	57	0.96	1	0.52	1	1
● Vinyl Chloride	0.91	0.29	1	1	1	1

Sampling period

Temporal Variations of VOCs Concentrations
Active Industrial Uniform Superfund Site #152125
63 West Merrick Road, Lindenhurst, New York
HRP# DEC1004.OM

RW-2



APPENDIX B

Operation and Maintenance Reports

From: [Goetz, Stephen](#)
To: [David Feinson](#)
Subject: Active Industrial, January 2021 Site Visit Notes & Photos
Date: Wednesday, February 17, 2021 4:14:00 PM

Good afternoon David,

I hope all is well by you. I've uploaded available field sheets and photos from activities conducted at the subject site in January 2021 to your FTP. In summary, AST packing cleanout was completed between 1/4/21 & 1/5/21; the OFPC site inspection was completed on 1/7/21; fencing inspection was conducted on 1/19/21; and fencing repairs were conducted between 1/21/21 & 1/22/21.

Feel free to contact me with any questions.

Thank you,
Stephen M. Goetz
Geologist/Project Manager
Environmental Assessment & Remediations
Phone: (631) 447-6400, extension 152
Fax: (631) 447-6497

Fire Safety Inspection Log
Active Industrial Uniform Site
NYSDEC Site No. 152125
63 West Merrick Road, Lindenhurst, NY

Monthly Fire Safety Inspection Items			
Item	Description	Result	
1	Exit signs internally or externally illuminated	Yes	No
2	Smoke alarms tested and functioning	Yes	No
3	Water leaks/water damage observed inside building	Yes	No
4	Fire extinguishers within expiration or inspected annually	Yes	No
5	All fire extinguishers present	Yes	No
6	Electrical Breaker Panel Issues	Yes	No
7	Covers present on all junction boxes, electrical switches, and outlets	Yes	No
8	Any evidence of pests present inside building (rodents, insects, etc.)	Yes	No
9	Emergency lighting tested and functioning	Yes	No

Periodic System Testing and Inspection			
Item	Description	Frequency	Date Last Performed
10	Sprinkler system testing	Annual	
11	Battery powered emergency lighting tested	Annual	
12	Fire Extinguishers annual inspection	Annual	
13	Emergency Lighting Testing	Monthly	1-26-21

Inspected By: Dave Adan
Inspection Date: 1-26-21

Other Items Noted:
* No smoke alarms in building

Fire Safety Inspection Log
Active Industrial Uniform Site
NYSDEC Site No. 152125
63 West Merrick Road, Lindenhurst, NY

Monthly Fire Safety Inspection Items			
Item	Description	Result	
1	Exit signs internally or externally illuminated	Yes	No
2	Smoke alarms tested and functioning	Yes	No
3	Water leaks/water damage observed inside building	Yes	No
4	Fire extinguishers within expiration or inspected annually	Yes	No
5	All fire extinguishers present	Yes	No
6	Electrical Breaker Panel Issues	Yes	No
7	Covers present on all junction boxes, electrical switches, and outlets	Yes	No
8	Any evidence of pests present inside building (rodents, insects, etc.)	Yes	No
9	Emergency lighting tested and functioning	Yes	No

exterior junction box
missing covers

Periodic System Testing and Inspection				
Item	Description	Frequency	Date Last Performed	Date Due
10	Sprinkler system testing	Annual		
11	Battery powered emergency lighting tested	Annual		
12	Fire Extinguishers annual inspection	Annual		
13	Emergency Lighting Testing	Monthly	1-31-21	

Inspected By: Dave Adam

Inspection Date: 3-31-21

Other Items Noted: Air stripping towers removed from rear of site building. Wires and piping observed hanging and cut at rear of building. One junction box opens. Two areas of staining also noted on asphalt pavement on the west side of treatment building.

**ACTIVE INDUSTRIAL UNIFORM SITE, NYSDEC SITE NO. 1-52-125
SITE ACTIVITIES LOG**

PERSONNEL ON-SITE	DATE/TIME ON-SITE	TIME OFFSITE	REASON FOR SITE VISIT (CHECK BOX BELOW)	
DSA HRP	3/31/21 7:00	8:15A	<input type="checkbox"/> Monitoring	<input checked="" type="checkbox"/> Maintenance
			<input type="checkbox"/> Sampling	<input type="checkbox"/> Other (Provide Description)
			<input type="checkbox"/> Alarm Response	
Description: Test emergency lights & Fire ext safety inspection building inspection, exterior fence inspection & yard.				
			<input type="checkbox"/> Monitoring	<input type="checkbox"/> Maintenance
			<input type="checkbox"/> Sampling	<input type="checkbox"/> Other (Provide Description)
			<input type="checkbox"/> Alarm Response	
Description:				
			<input type="checkbox"/> Monitoring	<input type="checkbox"/> Maintenance
			<input type="checkbox"/> Sampling	<input type="checkbox"/> Other (Provide Description)
			<input type="checkbox"/> Alarm Response	
Description:				

DAILY INSPECTION REPORT

Page 1 of 9

Report No. (Site Name) - NYSDEC Site No. 152125

Date: 01/26/21

[illegible]

DAILY INSPECTION REPORT

Page 2 of 9

Report No. (Site Name) - NYSDEC Site No. 152125

Date: 01/26/21

[illegible][illegible]

*On-Site scale for off-site shipment, delivery ticket for material received

Equipment/Material Tracking Comments:

DAILY INSPECTION REPORT

Report No. (Site Name) - NYSDEC Site No. 152125

Date: 01/26/21

Visitors to Site			
Name	Representing	Entered Exclusion/CRZ Zone	
		Yes	No
		Yes	No
		Yes	No
		Yes	No
		Yes	No
		Yes	No
		Yes	No
		Yes	No
		Yes	No
Site Representatives			
Name	Representing		
Project Schedule Comments			
Issues Pending			
Interaction with Public, Property Owners, Media, etc.			

DAILY INSPECTION REPORT

Page 4 of 9

Report No. (Site Name) - NYSDEC Site No. 152125

Date: 01/26/21

Include (insert) figures with markups showing location of work and job progress

DAILY INSPECTION REPORT

Page 5 of 9

Report No. (Site Name) - NYSDEC Site No. 152125

Date: 01/26/21

DAILY INSPECTION REPORT

Page 6 of 9

Report No. (Site Name) - NYSDEC Site No. 152125

Date: 01/26/21

Site Photographs (Descriptions Below)	

DAILY INSPECTION REPORT

Page 7 of 9

Report No. (Site Name) - NYSDEC Site No. 152125

Date: 01/26/21

Comments	
Site Inspector(s):	Date:

DAILY INSPECTION REPORT

Report No. (Site Name) - NYSDEC Site No. 152125

Date: 01/26/21

DAILY HEALTH CHECKLIST

Is social distancing being practiced?	Yes <input checked="" type="checkbox"/>	No <input type="checkbox"/>
Is the tail gate safety meeting held outdoors?	Yes <input checked="" type="checkbox"/>	No <input type="checkbox"/>
Are remote/call in job meetings being held in lieu of meeting in person where possible?	Yes <input checked="" type="checkbox"/>	No <input type="checkbox"/>
Were personal protective gloves, masks, and eye protection being used?	Yes <input checked="" type="checkbox"/>	No <input type="checkbox"/>
Are sanitizing wipes, wash stations or spray available?	Yes <input checked="" type="checkbox"/>	No <input type="checkbox"/>
Have any workers/visitors been excluded based on close contact with individuals diagnosed with COVID-19, have recently traveled to restricted areas or countries, or are symptomatic (fever, chills, cough/shortness of breath)?	Yes <input type="checkbox"/>	No <input checked="" type="checkbox"/>
<u>Comments:</u>		

REMEDIAL ACTIVITIES AT PROPERTIES

1. Have anyone at this location been tested and confirmed to have COVID-19?	Yes <input type="checkbox"/>	No <input checked="" type="checkbox"/>
2. Is anyone at this location isolated or quarantined for COVID-19?	Yes <input type="checkbox"/>	No <input checked="" type="checkbox"/>
3. Has anyone at this locaton had contact with anyone known to have COVID-19 in the past 14 days?	Yes <input type="checkbox"/>	No <input checked="" type="checkbox"/>
4. Does anyone at this locaton have any symptoms of a respiratory infection (e.g., cough, sore throat, fever, or shortness of breath)?	Yes <input type="checkbox"/>	No <input checked="" type="checkbox"/>
5. Does the Department and its contractors have your permission to enter the property at this time?	Yes <input checked="" type="checkbox"/>	No <input type="checkbox"/>
If Yes to <u>any</u> of 1-4 above: <ul style="list-style-type: none"> If it is <u>not</u> critical that service/entry be carried out immediately and can be postponed until the risk of COVID-19 is lower, or can be accomplished remotely/without entry, postpone or conduct service without entry. If it <u>is</u> critical that service/entry be carried out immediately, advise occupants that as a precaution and for our own protection, project personnel will be donning appropriate PPE* (including respiratory protection) - and do so prior to entry. 	Yes <input type="checkbox"/>	No <input type="checkbox"/>
<u>Comments:</u>		

DAILY INSPECTION REPORT

Report No. (Site Name) - NYSDEC Site No. 152125

Date: 01/26/21

NUISANCE CHECKLIST

Were there any community complaints related to work on this date?	Yes <input type="checkbox"/>	No <input checked="" type="checkbox"/>	N/A <input type="checkbox"/>
Were there any odors detected on this date?	Yes <input type="checkbox"/>	No <input checked="" type="checkbox"/>	N/A <input type="checkbox"/>
Was noise outside specification and/or above background on this date?	Yes <input type="checkbox"/>	No <input checked="" type="checkbox"/>	N/A <input type="checkbox"/>
Were vibration readings outside specification and/or above background on this date?	Yes <input type="checkbox"/>	No <input type="checkbox"/>	N/A <input checked="" type="checkbox"/>
Any visible dust observed beyond the work perimeter on this date?	Yes <input type="checkbox"/>	No <input type="checkbox"/>	N/A <input checked="" type="checkbox"/>
Any visible contrast (turbidity) beyond engineering controls observed on this date?	Yes <input type="checkbox"/>	No <input type="checkbox"/>	N/A <input checked="" type="checkbox"/>
Was turbidity checked at the Montauk Highway outfall?	AM <input type="checkbox"/>	PM <input type="checkbox"/>	N/A <input checked="" type="checkbox"/>
Were any property owners NOT provided advance notice for work performed on this property on this date?	Yes <input type="checkbox"/>	No <input type="checkbox"/>	N/A <input checked="" type="checkbox"/>
Was the temporary fabric structure closed at the end of the day?	Yes <input type="checkbox"/>	No <input type="checkbox"/>	N/A <input checked="" type="checkbox"/>
Has Contractor failed to protect all foundations and structures adjacent to and adjoining the site which are affected by the excavations or other operations connected with performance of the Work?	Yes <input type="checkbox"/>	No <input type="checkbox"/>	N/A <input checked="" type="checkbox"/>
If yes, has Contractor been notified?	Yes <input type="checkbox"/>	No <input type="checkbox"/>	N/A <input checked="" type="checkbox"/>
<u>Comments:</u>			

DAILY INSPECTION REPORT

Page 1 of 9

Report No. (Site Name) - NYSDEC Site No. 152125

Date: 01/27/21

[illegible]

DAILY INSPECTION REPORT

Page 2 of 9

Report No. (Site Name) - NYSDEC Site No. 152125

Date: 01/27/21

[illegible][illegible]

*On-Site scale for off-site shipment, delivery ticket for material received

Equipment/Material Tracking Comments:

DAILY INSPECTION REPORT

Report No. (Site Name) - NYSDEC Site No. 152125

Date: 01/27/21

Visitors to Site			
Name	Representing	Entered Exclusion/CRZ Zone	
		Yes	No
		Yes	No
		Yes	No
		Yes	No
		Yes	No
		Yes	No
		Yes	No
		Yes	No
		Yes	No
Site Representatives			
Name	Representing		
Project Schedule Comments			
Issues Pending			
Interaction with Public, Property Owners, Media, etc.			

DAILY INSPECTION REPORT

Page 4 of 9

Report No. (Site Name) - NYSDEC Site No. 152125

Date: 01/27/21

Include (insert) figures with markups showing location of work and job progress

DAILY INSPECTION REPORT

Page 5 of 9

Report No. (Site Name) - NYSDEC Site No. 152125

Date: 01/27/21

DAILY INSPECTION REPORT

Page 6 of 9

Report No. (Site Name) - NYSDEC Site No. 152125

Date: 01/27/21

Site Photographs (Descriptions Below)	

DAILY INSPECTION REPORT

Page 7 of 9

Report No. (Site Name) - NYSDEC Site No. 152125

Date: 01/27/21

Comments	
Site Inspector(s):	Date:

DAILY INSPECTION REPORT

Report No. (Site Name) - NYSDEC Site No. 152125

Date: 01/27/21

DAILY HEALTH CHECKLIST

Is social distancing being practiced?	Yes <input checked="" type="checkbox"/>	No <input type="checkbox"/>
Is the tail gate safety meeting held outdoors?	Yes <input checked="" type="checkbox"/>	No <input type="checkbox"/>
Are remote/call in job meetings being held in lieu of meeting in person where possible?	Yes <input checked="" type="checkbox"/>	No <input type="checkbox"/>
Were personal protective gloves, masks, and eye protection being used?	Yes <input checked="" type="checkbox"/>	No <input type="checkbox"/>
Are sanitizing wipes, wash stations or spray available?	Yes <input checked="" type="checkbox"/>	No <input type="checkbox"/>
Have any workers/visitors been excluded based on close contact with individuals diagnosed with COVID-19, have recently traveled to restricted areas or countries, or are symptomatic (fever, chills, cough/shortness of breath)?	Yes <input type="checkbox"/>	No <input checked="" type="checkbox"/>
<u>Comments:</u>		

REMEDIAL ACTIVITIES AT PROPERTIES

1. Have anyone at this location been tested and confirmed to have COVID-19?	Yes <input type="checkbox"/>	No <input checked="" type="checkbox"/>
2. Is anyone at this location isolated or quarantined for COVID-19?	Yes <input type="checkbox"/>	No <input checked="" type="checkbox"/>
3. Has anyone at this locaton had contact with anyone known to have COVID-19 in the past 14 days?	Yes <input type="checkbox"/>	No <input checked="" type="checkbox"/>
4. Does anyone at this locaton have any symptoms of a respiratory infection (e.g., cough, sore throat, fever, or shortness of breath)?	Yes <input type="checkbox"/>	No <input checked="" type="checkbox"/>
5. Does the Department and its contractors have your permission to enter the property at this time?	Yes <input checked="" type="checkbox"/>	No <input type="checkbox"/>
If Yes to <u>any</u> of 1-4 above: <ul style="list-style-type: none"> If it is <u>not</u> critical that service/entry be carried out immediately and can be postponed until the risk of COVID-19 is lower, or can be accomplished remotely/without entry, postpone or conduct service without entry. If it <u>is</u> critical that service/entry be carried out immediately, advise occupants that as a precaution and for our own protection, project personnel will be donning appropriate PPE* (including respiratory protection) - and do so prior to entry. 	Yes <input type="checkbox"/>	No <input type="checkbox"/>
<u>Comments:</u>		

DAILY INSPECTION REPORT

Report No. _____ (Site Name) - NYSDEC Site No. 152125

Date: 01/27/21

NUISANCE CHECKLIST

Were there any community complaints related to work on this date?	Yes <input type="checkbox"/>	No <input checked="" type="checkbox"/>	N/A <input type="checkbox"/>
Were there any odors detected on this date?	Yes <input type="checkbox"/>	No <input checked="" type="checkbox"/>	N/A <input type="checkbox"/>
Was noise outside specification and/or above background on this date?	Yes <input type="checkbox"/>	No <input checked="" type="checkbox"/>	N/A <input type="checkbox"/>
Were vibration readings outside specification and/or above background on this date?	Yes <input type="checkbox"/>	No <input type="checkbox"/>	N/A <input checked="" type="checkbox"/>
Any visible dust observed beyond the work perimeter on this date?	Yes <input type="checkbox"/>	No <input type="checkbox"/>	N/A <input checked="" type="checkbox"/>
Any visible contrast (turbidity) beyond engineering controls observed on this date?	Yes <input type="checkbox"/>	No <input type="checkbox"/>	N/A <input checked="" type="checkbox"/>
Was turbidity checked at the Montauk Highway outfall?	AM <input type="checkbox"/>	PM <input type="checkbox"/>	N/A <input checked="" type="checkbox"/>
Were any property owners NOT provided advance notice for work performed on this property on this date?	Yes <input type="checkbox"/>	No <input type="checkbox"/>	N/A <input checked="" type="checkbox"/>
Was the temporary fabric structure closed at the end of the day?	Yes <input type="checkbox"/>	No <input type="checkbox"/>	N/A <input checked="" type="checkbox"/>
Has Contractor failed to protect all foundations and structures adjacent to and adjoining the site which are affected by the excavations or other operations connected with performance of the Work?	Yes <input type="checkbox"/>	No <input type="checkbox"/>	N/A <input checked="" type="checkbox"/>
If yes, has Contractor been notified?	Yes <input type="checkbox"/>	No <input type="checkbox"/>	N/A <input checked="" type="checkbox"/>
<u>Comments:</u>			

Report No. (Site Name) - NYSDEC Site No. 152125

Date: 03/31/21



NEW YORK STATE
Department of
Environmental
Conservation
50

DAILY INSPECTION REPORT

Page 2 of 9

Report No. (Site Name) - NYSDEC Site No. 152125

Date: 03/31/21

[illegible][illegible]

*On-Site scale for off-site shipment, delivery ticket for material received

Equipment/Material Tracking Comments:

DAILY INSPECTION REPORT

Report No. (Site Name) - NYSDEC Site No. 152125

Date: 03/31/21

Visitors to Site			
Name	Representing	Entered Exclusion/CRZ Zone	
		Yes	No
		Yes	No
		Yes	No
		Yes	No
		Yes	No
		Yes	No
		Yes	No
		Yes	No
		Yes	No
Site Representatives			
Name	Representing		
Project Schedule Comments			
Issues Pending			
Interaction with Public, Property Owners, Media, etc.			

DAILY INSPECTION REPORT

Page 4 of 9

Report No. (Site Name) - NYSDEC Site No. 152125

Date: 03/31/21

Include (insert) figures with markups showing location of work and job progress

DAILY INSPECTION REPORT

Page 5 of 9

Report No. (Site Name) - NYSDEC Site No. 152125

Date: 03/31/21

DAILY INSPECTION REPORT

Page 6 of 9

Report No. (Site Name) - NYSDEC Site No. 152125

Date: 03/31/21

Site Photographs (Descriptions Below)	

DAILY INSPECTION REPORT

Page 7 of 9

Report No. (Site Name) - NYSDEC Site No. 152125

Date: 03/31/21

Comments	
Site Inspector(s):	Date:

DAILY INSPECTION REPORT

Report No. (Site Name) - NYSDEC Site No. 152125

Date: 03/31/21

DAILY HEALTH CHECKLIST

Is social distancing being practiced?	Yes <input checked="" type="checkbox"/>	No <input type="checkbox"/>
Is the tail gate safety meeting held outdoors?	Yes <input checked="" type="checkbox"/>	No <input type="checkbox"/>
Are remote/call in job meetings being held in lieu of meeting in person where possible?	Yes <input checked="" type="checkbox"/>	No <input type="checkbox"/>
Were personal protective gloves, masks, and eye protection being used?	Yes <input checked="" type="checkbox"/>	No <input type="checkbox"/>
Are sanitizing wipes, wash stations or spray available?	Yes <input checked="" type="checkbox"/>	No <input type="checkbox"/>
Have any workers/visitors been excluded based on close contact with individuals diagnosed with COVID-19, have recently traveled to restricted areas or countries, or are symptomatic (fever, chills, cough/shortness of breath)?	Yes <input type="checkbox"/>	No <input checked="" type="checkbox"/>
<u>Comments:</u>		

REMEDIAL ACTIVITIES AT PROPERTIES

1. Have anyone at this location been tested and confirmed to have COVID-19?	Yes <input type="checkbox"/>	No <input checked="" type="checkbox"/>
2. Is anyone at this location isolated or quarantined for COVID-19?	Yes <input type="checkbox"/>	No <input checked="" type="checkbox"/>
3. Has anyone at this locaton had contact with anyone known to have COVID-19 in the past 14 days?	Yes <input type="checkbox"/>	No <input checked="" type="checkbox"/>
4. Does anyone at this locaton have any symptoms of a respiratory infection (e.g., cough, sore throat, fever, or shortness of breath)?	Yes <input type="checkbox"/>	No <input checked="" type="checkbox"/>
5. Does the Department and its contractors have your permission to enter the property at this time?	Yes <input checked="" type="checkbox"/>	No <input type="checkbox"/>
If Yes to <u>any</u> of 1-4 above: <ul style="list-style-type: none"> If it is <u>not</u> critical that service/entry be carried out immediately and can be postponed until the risk of COVID-19 is lower, or can be accomplished remotely/without entry, postpone or conduct service without entry. If it <u>is</u> critical that service/entry be carried out immediately, advise occupants that as a precaution and for our own protection, project personnel will be donning appropriate PPE* (including respiratory protection) - and do so prior to entry. 	Yes <input type="checkbox"/>	No <input type="checkbox"/>
<u>Comments:</u>		

DAILY INSPECTION REPORT

Report No. _____ (Site Name) - NYSDEC Site No. 152125

Date: 03/31/21

NUISANCE CHECKLIST

Were there any community complaints related to work on this date?	Yes <input type="checkbox"/>	No <input checked="" type="checkbox"/>	N/A <input type="checkbox"/>
Were there any odors detected on this date?	Yes <input type="checkbox"/>	No <input checked="" type="checkbox"/>	N/A <input type="checkbox"/>
Was noise outside specification and/or above background on this date?	Yes <input type="checkbox"/>	No <input checked="" type="checkbox"/>	N/A <input type="checkbox"/>
Were vibration readings outside specification and/or above background on this date?	Yes <input type="checkbox"/>	No <input type="checkbox"/>	N/A <input checked="" type="checkbox"/>
Any visible dust observed beyond the work perimeter on this date?	Yes <input type="checkbox"/>	No <input type="checkbox"/>	N/A <input checked="" type="checkbox"/>
Any visible contrast (turbidity) beyond engineering controls observed on this date?	Yes <input type="checkbox"/>	No <input type="checkbox"/>	N/A <input checked="" type="checkbox"/>
Was turbidity checked at the Montauk Highway outfall?	AM <input type="checkbox"/>	PM <input type="checkbox"/>	N/A <input checked="" type="checkbox"/>
Were any property owners NOT provided advance notice for work performed on this property on this date?	Yes <input type="checkbox"/>	No <input type="checkbox"/>	N/A <input checked="" type="checkbox"/>
Was the temporary fabric structure closed at the end of the day?	Yes <input type="checkbox"/>	No <input type="checkbox"/>	N/A <input checked="" type="checkbox"/>
Has Contractor failed to protect all foundations and structures adjacent to and adjoining the site which are affected by the excavations or other operations connected with performance of the Work?	Yes <input type="checkbox"/>	No <input type="checkbox"/>	N/A <input checked="" type="checkbox"/>
If yes, has Contractor been notified?	Yes <input type="checkbox"/>	No <input type="checkbox"/>	N/A <input checked="" type="checkbox"/>
<u>Comments:</u>			

Sasha Isenberg

From: Goetz, Stephen <Goetz@ENVIRO-ASMNT.COM>
Sent: Wednesday, February 17, 2021 4:14 PM
To: David Feinson
Subject: Active Industrial, January 2021 Site Visit Notes & Photos

Good afternoon David,

I hope all is well by you. I've uploaded available field sheets and photos from activities conducted at the subject site in January 2021 to your FTP. In summary, AST packing cleanout was completed between 1/4/21 & 1/5/21; the OFPC site inspection was completed on 1/7/21; fencing inspection was conducted on 1/19/21; and fencing repairs were conducted between 1/21/21 & 1/22/21.

Feel free to contact me with any questions.

Thank you,
Stephen M. Goetz
Geologist/Project Manager
Environmental Assessment & Remediations
Phone: (631) 447-6400, extension 152
Fax: (631) 447-6497

**Stanton Cleaners Area Superfund Site
Water Level Data Summary**

Site: Lindenhurst63

Location: 63 West Montauk Highway Lindenhurst, NY

Field Personnel: KG/DJA

Date: 1-26-2021

Project #: DEC1004OM

Well ID	Depth to Water (feet)	Time	Notes
RW-1	9.76	7:29a	
MW-4D	6.56	7:31a	
MW-4S	6.71	7:32a	
MW-108	7.11	7:33a	
MW-104	6.73	7:35a	
MW-5S	6.44	7:35a	
MW-102	6.77	7:37a	
MW-101	6.93	7:38a	
MW-106	6.74	7:40a	
MW-107	6.71	7:41am	
MW-105	6.79	7:42a	
MW-103	6.71	7:43a	
MW-2S	5.69	7:45a	
MW-111	3.21	7:49a	
RW-2	1.10	7:55a	
MW-109	0.71	7:57a	

HRP Associates, Inc.

197 Scott Swamp Rd.

Farmington, CT 06032

(860) 674-9570

Monitor Well Data Sheet

 Page 1 of 2

 Well ID: **MW-2s**
Site Background Information

Site Location:

63 West Merrick Rd, Lindenhurst, NY

Job Number:

DEC1004.OM

Weather:

Overcast 35°F

Sampling Dates:

1/26 - 1/27/21

Field Team Leader:

Team Personnel:

DJA, KJ

Ground Water Elevation Data

Date	Time	Sampler Name	Equipment Model	Depth to Water (ft)		Depth to Bottom (ft)	
1/26/21	7:45	KJ	Solinst-101	uncorrected		uncorrected	
			corr. factor 0	corrected	5.69	corrected	21.77

Measurement Point: 2" pvc HW

DTB - after sampling = 18.50

Well Condition (circle one)

General Condition	Visible Well ID	Well Cap Present	Well Plumbness	Lock
Fair	Yes	Yes	Good	Yes
Concrete Collar	Ponded Water	Comments:		
Good	No	Obstruction in well @ water level. Possible former well cap. Bolt holes stained.		

Well Purging Data

Date	Time						Sampler Initials	Instrument Calibration Date
	Equipment Set-up		Purging		Sample Collection			
	Start	Finish	Start	Finish	Start	Finish		
1/26/21	7:51	9:55	9:55	11:07	11:07	11:09	MS	1/25/21

Instrument Mfg & Model

pH	YSI 600XL-M / YSI 556 - Serial # 040 2566 AB
Temp.	
Sp. Cond.	
ORP	
DO	
Turbidity	HF Scientific DRT-15CE - Serial # HRP 4

Initial Water Depth (ft):			Time: 9:51					
Time	Water Depth (ft)	Flow Rate (ml/min)	pH (s.u.)	Temp (°C)	Sp Con (uS)	ORP (mV)	DO (mg/l)	Turbidity (ntu)
9:57	5.68	140	7.84	11.20	327	-28.2	2.53	7.33
10:02	5.68		7.15	11.51	320	8.8	2.02	10.12
10:07	5.68		6.67	11.91	321	42.1	1.90	13.82
10:12	5.68		6.41	11.83	324	65.4	1.88	15.80
10:17	5.68		6.31	11.75	325	76.2	1.63	17.15
10:22	5.68		6.25	12.00	326	84.5	1.41	19.11
10:27	5.68		6.23	12.24	326	82.9	1.19	9.37
10:32	5.68		6.20	12.11	327	95.7	1.13	9.46
10:37	5.68		6.20	12.30	327	98.7	0.93	6.84
Req. Limits for Last 3 Readings			+/- 0.1	3%	3%	+/- 10 mv	10% > 0.5	10% > 5

Pump Mfg & Model	Color	Odor	Purge Vol (ml)	Sample Depth (ft.)
peristaltic pump	clear	—	5000/10150	16.77

Sample Containers

Type & No.	Volume	Preservative	Type & No.	Volume	Preservative
3 vials	3 x 40mL	HCl			

$10\% > 5$

HRP Associates, Inc.
197 Scott Swamp Rd.
Farmington, CT 06032
(860) 674-9570

Monitor Well Data Sheet

Well ID: MW-4d

Page 1 of 1

Site Background Information

Site Location:

63 West Merrick Rd, Lindenhurst, NY

Job Number:

DEC1004.OM

Weather:

Partly 35°F

Sampling Dates:

1-20-01 - 1/27/01

Field Team Leader:

Team Personnel:

HC OSA

Ground Water Elevation Data

Date	Time	Sampler Name	Equipment Model	Depth to Water (ft)	Depth to Bottom (ft)
1/26/01	7:31	MSA	Solinst-101 corr. factor 0	uncorrected corrected 6.56	uncorrected corrected 67.40

Measurement Point:

2" pvc 4" PVC HW

DTB - after sampling = 67.41

Well Condition (circle one)

General Condition	Visible Well ID	Well Cap Present	Well Plumbness	Lock
good	NO	yes	good	no
Concrete Collar	Ponded Water	Comments:		
good	NO	bottom missing		

Well Purging Data

Date	Equipment Set-up		Time Purging		Sample Collection		Sampler Initials	Instrument Calibration Date
	Start	Finish	Start	Finish	Start	Finish		
1/26/01	12:51	12:54	12:52	1:01	1:01	1:03	MSA	1/25/01

Instrument Mfg & Model

pH	YSI 600XL-M / YSI 556 - Serial # 14630
Temp.	
Sp. Cond.	
ORP	
DO	
Turbidity	HF Scientific DRT-15CE - Serial # 116847

Initial Water Depth (ft): 6.57			Time: 12:51					
Time	Water Depth (ft)	Flow Rate (ml/min)	pH (s.u.)	Temp (°C)	Sp Con (uS)	ORP (mV)	DO (mg/l)	Turbidity (ntu)
12:56	12:55	190	7.58	10.48	258	22.8	1.96	0.76
1:01	12:58		7.69	11.24	254	25.7	0.93	1.83
1:06	12:58		7.77	11.86	257	26.4	0.65	0.87
1:11	12:58		7.79	11.90	256	19.2	0.57	0.67
1:16	12:56		7.80	11.94	254	19.1	0.58	0.36
1:21	12:55		7.81	11.86	253	19.2	0.52	0.50

Req. Limits for Last 3 Readings	+/- 0.1	3%	3%	+/- 10 mv	10% > 0.5	10% > 5
---------------------------------	---------	----	----	-----------	-----------	---------

Pump Mfg & Model	Color	Odor	Purge Vol (ml)	Sample Depth (ft.)
peristaltic pump	clear	-	2900	62.4

Sample Containers

Type & No.	Volume	Preservative	Type & No.	Volume	Preservative
3 vials	3 x 40mL	HCl			

HRP Associates, Inc.

197 Scott Swamp Rd.

Farmington, CT 06032

(860) 674-9570

Monitor Well Data Sheet

Well ID: MW-5s

Page 1 of 1

Site Background Information

Site Location:

63 West Merrick Rd, Lindenhurst, NY

Job Number:

DEC1004.OM

Weather:

Partly 30°F

Sampling Dates:

12/26 - 12/27/21

Field Team Leader:

Team Personnel:

DJA/KG

Ground Water Elevation Data

Date	Time	Sampler Name	Equipment Model	Depth to Water (ft)		Depth to Bottom (ft)	
12/26/21	7:35	DJA/KG	Solinst-101	uncorrected		uncorrected	
			corr. factor 0	corrected	6.44	corrected	23.82

Measurement Point:

2" pvc

DTB - after sampling =

23.58

Well Condition (circle one)

General Condition	Visible Well ID	Well Cap Present	Well Plumbness	Lock
Good	Yes	Yes	Good	Yes
Concrete Collar	Ponded Water	Comments:		
Good	No	No Rolt		

Well Purging Data

Date	Equipment Set-up		Time Purging		Sample Collection		Sampler Initials	Instrument Calibration Date
	Start	Finish	Start	Finish	Start	Finish		
12/26/21	2:17	2:21	2:21	2:58	2:58	3:00	DJA	12/25/21

Instrument Mfg & Model

pH	YSI 600XL-M / YSI 556 - Serial # 0407866119
Temp.	
Sp. Cond.	
ORP	
DO	
Turbidity	HF Scientific DRT-15CE - Serial # H014

Initial Water Depth (ft):			Time: 2:17					
Time	Water Depth (ft)	Flow Rate (ml/min)	pH (s.u.)	Temp (°C)	Sp Con (uS)	ORP (mV)	DO (mg/l)	Turbidity (ntu)
2:27	6.41	50	6.41	11.90	339	52.1	0.56	1.37
2:32	6.41		6.31	12.48	339	68.1	0.39	1.09
2:37	6.41		6.27	12.23	330	79.4	0.17	1.12
2:42	6.41		6.24	12.42	335	88.5	0.07	0.99
2:47	6.41		6.22	12.49	337	94.2	0.06	1.20
2:52	6.41		6.22	12.50	338	91.6	0.14	1.12
2:57	6.41		6.21	12.50	342	103.4	0.14	1.09

Req. Limits for Last 3 Readings	+/- 0.1	3%	3%	+/- 10 mv	10% > 0.5	10% > 5
---------------------------------	---------	----	----	-----------	-----------	---------

Pump Mfg & Model	Color	Odor	Purge Vol (ml)	Sample Depth (ft.)
peristaltic pump	blue		5110	18.82

Sample Containers

Type & No.	Volume	Preservative	Type & No.	Volume	Preservative
3 vials	3 x 40mL	HCl			

HRP Associates, Inc.

197 Scott Swamp Rd.

Farmington, CT 06032

(860) 674-9570

Monitor Well Data Sheet

 Page 1 of 1

Well ID: MW-101

Site Background Information

Site Location:

63 West Merrick Rd, Lindenhurst, NY

Job Number:

DEC1004.OM

Weather:

Snow 38°F

Sampling Dates:

1/26-1/27/14

Field Team Leader:

Team Personnel:

DJR/KG

Ground Water Elevation Data

Date	Time	Sampler Name	Equipment Model	Depth to Water (ft)	Depth to Bottom (ft)
1/26/14	7:38	WJ/KG	Solinst-101	uncorrected	uncorrected
			corr. factor 0	corrected 6.93	corrected 14.22

Measurement Point:

2" pvc HW

DTB - after sampling =

14.53

Well Condition (circle one)

General Condition	Visible Well ID	Well Cap Present	Well Plumbness	Lock
Good	No	Yes	Good	Yes
Concrete Collar	Ponded Water	Comments:		
Good	No	No Batts		

Well Purging Data

Date	Equipment Set-up		Time Purging		Sample Collection		Sampler Initials	Instrument Calibration Date
	Start	Finish	Start	Finish	Start	Finish		
1/26/14	12:44	12:46	12:46	1:31	1:31	1:33	KG	1/25/14

Instrument Mfg & Model

pH	YSI 600XL-M / YSI 556 - Serial # 0402866A9
Temp.	
Sp. Cond.	
ORP	
DO	
Turbidity	HF Scientific DRT-15CE - Serial # HRP-4

Initial Water Depth (ft):			Time:					
Time	Water Depth (ft)	Flow Rate (ml/min)	pH (s.u.)	Temp (°C)	Sp Con (uS)	ORP (mV)	DO (mg/l)	Turbidity (ntu)
12:50	6.93	140	6.82	9.72	528	12.0	3.74	5.43
12:55	6.93		7.12	9.60	529	9.4	3.03	3.83
1:00	6.93		7.15	9.51	529	10.8	2.92	4.06
1:05	6.93		7.16	9.47	522	13.1	2.73	3.03
1:10	6.93		7.20	9.58	519	13.1	2.55	3.16
1:15	6.93		7.20	9.43	512	15.2	2.28	2.57
1:20	6.93		7.23	9.48	510	13.4	2.19	1.87
1:25	6.93		7.23	9.39	515	14.6	2.00	1.53
1:30	6.93		7.23	9.44	508	13.4	2.00	1.69

Req. Limits for Last 3 Readings

+/- 0.1

3%

3%

+/- 10 mv

10% > 0.5

10% > 5

Pump Mfg & Model

Color

Odor

Purge Vol (ml)

Sample Depth (ft.)

peristaltic pump

clear

—

6300

10.56

Sample Containers

Type & No.	Volume	Preservative	Type & No.	Volume	Preservative
3 vials	3 x 40mL	HCl			

HRP Associates, Inc.

197 Scott Swamp Rd.

Farmington, CT 06032

(860) 674-9570

Monitor Well Data Sheet

 Page 1 of 1

Well ID: MW-102

Site Background Information

Site Location:

63 West Merrick Rd; Lindenhurst, NY

Job Number:

DEC1004.OM

Weather:

Snow 38°F

Sampling Dates:

1/26-27/21

Field Team Leader:

Team Personnel:

DWA, JG

Ground Water Elevation Data

Date	Time	Sampler Name	Equipment Model	Depth to Water (ft)		Depth to Bottom (ft)	
1/26/21	7:37	DWA	Solinst-101	uncorrected		uncorrected	
			corr. factor 0	corrected	6.77	corrected	14.10

Measurement Point:

2" pvc HP

DTB - after sampling =

11M

Well Condition (circle one)

General Condition	Visible Well ID	Well Cap Present	Well Plumbness	Lock
Good	Yes	Yes	Good	Yes
Concrete Collar	Ponded Water	Comments:		
Good	No	1 bit too loose, No bolts.		

Well Purging Data

Date	Equipment Set-up		Time Purging		Sample Collection		Sampler Initials	Instrument Calibration Date
	Start	Finish	Start	Finish	Start	Finish		
1/28/21	1:37	1:59	1:39	2:14	2:14	2:16	JG	1/25/21

Instrument Mfg & Model

pH	YSI 600XL-M / YSI 556 - Serial # 0402866AB
Temp.	
Sp. Cond.	
ORP	
DO	
Turbidity	HF Scientific DRT-15CE - Serial # H144

Initial Water Depth (ft):			Time:					
Time	Water Depth (ft)	Flow Rate (ml/min)	pH (s.u.)	Temp (°C)	Sp Con (uS)	ORP (mV)	DO (mg/l)	Turbidity (ntu)
1:43	6.75	150	7.26	9.30	761	38.2	2.69	2.65
1:48	6.75		7.30	9.30	765	35.4	2.31	2.78
1:53	6.75		7.28	9.51	751	36.7	2.12	2.54
1:58	6.75		7.28	9.41	754	37.7	2.13	2.10
2:03	6.75		7.25	9.54	731	38.5	2.02	1.95
2:08	6.75		7.25	9.40	746	40.2	2.09	1.77
2:13	6.75		7.24	9.43	734	41.3	1.96	1.84

Req. Limits for Last 3 Readings

+/- 0.1

3%

3%

+/- 10 mv

10% > 0.5

10% > 5

Pump Mfg & Model

Color

Odor

Purge Vol (ml)

Sample Depth (ft.)

peristaltic pump

clear

—

5250

10.92

Sample Containers

Type & No.	Volume	Preservative	Type & No.	Volume	Preservative
3 vials	3 x 40mL	HCl			

HRP Associates, Inc.

197 Scott Swamp Rd.

Farmington, CT 06032

(860) 674-9570

Monitor Well Data Sheet

 Page 1 of 1

 Well ID: **MW-103**
Site Background Information

Site Location:

63 West Merrick Rd, Lindenhurst, NY

Job Number:

DEC1004.OM

Weather:

partly cloudy 39

Sampling Dates:

1-20-21 + 1-27-21

Field Team Leader:

Team Personnel:

KCB/OSA

Ground Water Elevation Data

Date	Time	Sampler Name	Equipment Model	Depth to Water (ft)		Depth to Bottom (ft)	
1/26/21	7:43	OSA/KG	Solinst-101	uncorrected		uncorrected	
			corr. factor 0	corrected	6.71	corrected	12.75

Measurement Point:

2" pvc KVV

DTB - after sampling =

12.77

Well Condition (circle one)

General Condition	Visible Well ID	Well Cap Present	Well Plumbness	Lock
good	LOS	yes	good	yes
Concrete Collar	Ponded Water	Comments:		
good	no	built missing		

Well Purging Data

Date	Time						Sampler Initials	Instrument Calibration Date
	Equipment Set-up		Purging		Sample Collection			
	Start	Finish	Start	Finish	Start	Finish		
1-27-21	7:30	8:05	8:05	8:25	8:35	8:37	OW	1-26-21

Instrument Mfg & Model

pH	YSI 600XL-M / YSI 556 - Serial # 1600
Temp.	
Sp. Cond.	
ORP	
DO	
Turbidity	HF Scientific DRT-15CE - Serial # HRP #7

Initial Water Depth (ft):		Time:						
Time	Water Depth (ft)	Flow Rate (ml/min)	pH (s.u.)	Temp (°C)	Sp Con (uS)	ORP (mV)	DO (mg/l)	Turbidity (ntu)
8:10	6.69	100	6.84	9.22	346	94.7	4.97	8.53
8:15	6.67		6.86	10.07	342	109.4	4.42	7.67
8:20	6.67		6.76	10.09	342	115.8	4.23	7.64
8:25	6.67		6.76	10.04	344	123.1	4.23	4.74
8:30	6.67		6.77	10.02	346	127.5	4.08	4.02
8:35	6.67		6.76	10.01	345	131.4	3.98	3.87

Req. Limits for Last 3 Readings

+/- 0.1

3%

3%

+/- 10 mv

10% > 0.5

10% > 5

Pump Mfg & Model

Color

Odor

Purge Vol (ml)

Sample Depth (ft.)

peristaltic pump

Clear

✓

3000

9.71

Sample Containers

Type & No.	Volume	Preservative	Type & No.	Volume	Preservative
3 vials	3 x 40mL	HCl			

HRP Associates, Inc.

197 Scott Swamp Rd.

Farmington, CT 06032

(860) 674-9570

Monitor Well Data Sheet

Well ID: MW-104

Page 1 of 1

Site Background Information

Site Location: 63 West Merrick Rd, Lindenhurst, NY
 Job Number: DEC1004.OM
 Weather: Sunny / partly cloudy

Sampling Dates: 1-26-21 + 1-27-21
 Field Team Leader:
 Team Personnel: KG / DSA

Ground Water Elevation Data

Date	Time	Sampler Name	Equipment Model	Depth to Water (ft)		Depth to Bottom (ft)	
1/26/21	7:35	DSA	Solinst-101 corr. factor 0	uncorrected		uncorrected	
				corrected	6.73	corrected	14.24

Measurement Point: 2" pvc

DTB - after sampling = 14.45

Well Condition (circle one)

General Condition	Visible Well ID	Well Cap Present	Well Plumbness	Lock
good	yes	yes	good	yes
Concrete Collar	Ponded Water	Comments:		
good	no	bolts missing		

Well Purging Data

Date	Time						Sampler Initials	Instrument Calibration Date
	Equipment Set-up		Purging		Sample Collection			
	Start	Finish	Start	Finish	Start	Finish		
1-27-21	8:50	8:58	8:58	9:24	9:24	9:26	PTA	1-26-21

Instrument Mfg & Model

pH	YSI 600XL-M / YSI 556 - Serial # 16030
Temp.	
Sp. Cond.	
ORP	
DO	
Turbidity	HF Scientific DRT-15CE - Serial # HRP #7

Initial Water Depth (ft): 6.66			Time: 8:50					
Time	Water Depth (ft)	Flow Rate (ml/min)	pH (s.u.)	Temp (°C)	Sp Con (uS)	ORP (mV)	DO (mg/l)	Turbidity (ntu)
7:00	6.66	120	7.03	10.23	238	116.3	8.01	4.49
7:07	6.66	120	7.02	10.28	241	116.2	7.96	4.23
7:14	6.66		7.04	10.31	246	124.8	7.98	2.52
7:19	6.66		7.04	10.32	247	127.9	8.00	2.45
7:24	6.66		7.01	10.34	248	130.4	8.00	1.75

Req. Limits for Last 3 Readings	+/- 0.1	3%	3%	+/- 10 mv	10% > 0.5	10% > 5
---------------------------------	---------	----	----	-----------	-----------	---------

Pump Mfg & Model	Color	Odor	Purge Vol (ml)	Sample Depth (ft.)
peristaltic pump	Green		320	10.45

Sample Containers

Type & No.	Volume	Preservative	Type & No.	Volume	Preservative
3 vials	3 x 40mL	HCl			

HRP Associates, Inc.

197 Scott Swamp Rd.

Farmington, CT 06032

(860) 674-9570

Monitor Well Data Sheet

Page 1 of 1

Well ID: MW-105

Site Background Information

Site Location:	63 West Merrick Rd, Lindenhurst, NY	Sampling Dates:	1/26-27/21
Job Number:	DEC1004.OM	Field Team Leader:	
Weather:	Overcast 39°F	Team Personnel:	WAL

Ground Water Elevation Data

Date	Time	Sampler Name	Equipment Model	Depth to Water (ft)	Depth to Bottom (ft)
1/26/21	7:42	WAL	Solinst-101	uncorrected	uncorrected
			corr. factor 0	corrected 6.79	corrected 14.29

Measurement Point: 2" pvc hw

DTB - after sampling = 14.30

Well Condition (circle one)

General Condition	Visible Well ID	Well Cap Present	Well Plumbness	Lock
Fair	Yes	Yes	Good	Yes

Concrete Collar	Ponded Water	Comments:
Good	No	But hole stopped missing 16A Dye = MW-B @ 8:44

Well Purging Data

Date	Equipment Set-up		Time Purging		Sample Collection		Sampler Initials	Instrument Calibration Date
	Start	Finish	Start	Finish	Start	Finish		
1/26/21	7:56	7:59	7:59	8:42	8:42	8:44	W	1/26/21

Instrument Mfg & Model

pH	YSI 600XL-M / YSI 556 - Serial # 040286693
Temp.	
Sp. Cond.	
ORP	
DO	
Turbidity	HF Scientific DRT-15CE - Serial # 1004

Time	Initial Water Depth (ft):	Water Depth (ft)	Flow Rate (ml/min)	pH (s.u.)	Temp (°C)	Sp Con (uS)	ORP (mV)	DO (mg/l)	Turbidity (ntu)
8:06	6.70	6.72	160	6.52	11.58	319	19.5	2.82	0.68
8:11		6.72		6.11	11.50	310	36.1	2.93	0.79
8:16		6.72		6.10	11.68	311	47.2	2.79	1.01
8:21		6.72		6.09	12.02	311	52.6	2.54	1.21
8:26		6.72		6.11	12.03	313	57.9	2.35	0.77
8:31		6.72		6.12	11.93	308	60.9	2.10	0.96
8:36		6.72		6.10	12.42	302	60.4	1.94	1.18
8:41		6.72		6.14	11.58	312	62.1	1.96	1.64
8:46									

Req. Limits for Last 3 Readings	+/- 0.1	3%	3%	+/- 10 mv	10% > 0.5	10% > 5
---------------------------------	---------	----	----	-----------	-----------	---------

Pump Mfg & Model	Color	Odor	Purge Vol (ml)	Sample Depth (ft.)
peristaltic pump	clear	—	6550	10.49

Sample Containers

Type & No.	Volume	Preservative	Type & No.	Volume	Preservative
3 vials	3 x 40mL	HCl			

HRP Associates, Inc.

197 Scott Swamp Rd.

Farmington, CT 06032

(860) 674-9570

Monitor Well Data Sheet

 Page 1 of 2

Well ID: MW-106

Site Background Information

Site Location:

Job Number:

Weather:

63 West Merrick Rd, Lindenhurst, NY

DEC1004.OM

Fluvial 37°F

Sampling Dates:

Field Team Leader:

Team Personnel:

1/26 - 1/27/21

DIA, KA

Ground Water Elevation Data

Date	Time	Sampler Name	Equipment Model	Depth to Water (ft)	Depth to Bottom (ft)
1/26/21	7:40	214 KA	Solinst-101	uncorrected	uncorrected
			corr. factor 0	corrected 6.74	corrected 13.63

Measurement Point:

2" pvc HW

DTB - after sampling = 13.68

Well Condition (circle one)

General Condition	Visible Well ID	Well Cap Present	Well Plumbness	Lock
Fair	No	Yes	Good	Yes
Concrete Collar	Ponded Water	Comments: 16.4' to bottom No Bulbs		
Good	No			

Well Purging Data

Date	Equipment Set-up		Time Purging		Sample Collection		Sampler Initials	Instrument Calibration Date
	Start	Finish	Start	Finish	Start	Finish		
1/26/21	11:32	11:35	11:35	12:39	12:39	12:41	KA	1/25/21

Instrument Mfg & Model

pH	YSI 600XL-M / YSI 556 - Serial # 402860A9
Temp.	
Sp. Cond.	
ORP	
DO	
Turbidity	HF Scientific DRT-15CE - Serial # 1001-4

Initial Water Depth (ft): 6.71			Time: 11:32					
Time	Water Depth (ft)	Flow Rate (ml/min)	pH (s.u.)	Temp (°C)	Sp Con (uS)	ORP (mV)	DO (mg/l)	Turbidity (ntu)
11:38	6.76	190	6.64	10.27	870	125.3	2.71	5.31
11:43	6.76		6.90	10.64	800	83.1	0.92	4.12
11:48	6.77		6.85	11.01	691	25.2	0.52	4.79
11:53	6.77		6.81	11.15	664	5.2	0.33	3.67
11:58	6.76		6.79	11.11	620	-0.7	0.23	4.51
12:03	6.76		6.78	11.29	600	-8.0	0.11	3.12
12:08	6.76		6.77	11.40	581	-11.5	0.04	2.71
12:13	6.76		6.76	11.29	565	-14.0	0.03	2.31
12:18	6.76		6.74	11:33	524	-12.5	0.09	2.37

Req. Limits for Last 3 Readings

+/- 0.1

3%

3%

+/- 10 mv

10% > 0.5

10% > 5

Pump Mfg & Model	Color	Odor	Purge Vol (ml)	Sample Depth (ft.)
peristaltic pump	clear	-	8960	10.17

Sample Containers

Type & No.	Volume	Preservative	Type & No.	Volume	Preservative
3 vials	3 x 40mL	HCl			

(860) 674-9570

Page 2 of 2

MW-106

 $10\% > 5$

HRP Associates, Inc.

197 Scott Swamp Rd.

Farmington, CT 06032

(860) 674-9570

Monitor Well Data Sheet

Well ID: MW-107

Page 1 of 1

Site Background Information

Site Location:

63 West Merrick Rd, Lindenhurst, NY

Job Number:

DEC1004.OM

Weather:

cloudy light snow 33

Sampling Dates:

1-26-21 + 1-27-21

Field Team Leader:

Team Personnel:

KG/MSA

Ground Water Elevation Data

Date	Time	Sampler Name	Equipment Model	Depth to Water (ft)	Depth to Bottom (ft)
1/26/21	7:41	MS/KG	Solinst-101	uncorrected	uncorrected
			corr. factor 0	corrected 6.71	corrected 14.71

Measurement Point:

2" pvc

HW

DTB - after sampling =

14.35

Well Condition (circle one)

General Condition	Visible Well ID	Well Cap Present	Well Plumbness	Lock
good	yes	yes	good	yes
Concrete Collar	Ponded Water	Comments:		
good	no	bolts missing		

Well Purging Data

Date	Equipment Set-up		Time Purging		Sample Collection		Sampler Initials	Instrument Calibration Date
	Start	Finish	Start	Finish	Start	Finish		
1/26/21	11:36	11:40	11:40	12:20	12:20	12:22	MSA	1-20-21

Instrument Mfg & Model

pH	YSI 600XL-M / YSI 556 - Serial # 16630
Temp.	
Sp. Cond.	
ORP	
DO	
Turbidity	HF Scientific DRT-15CE - Serial # MKP #7

Initial Water Depth (ft): 6.70			Time: 11:36		Sp Con (uS)	ORP (mV)	DO (mg/l)	Turbidity (ntu)
Time	Water Depth (ft)	Flow Rate (ml/min)	pH (s.u.)	Temp (°C)				
11:45	6.72	100	6.72	10.61	515	197.4	2.08	4.65
11:50	6.72		6.85	11.38	495	70.1	1.66	2.41
11:55	6.70		6.86	11.55	499	4.1	1.26	2.07
12:00	6.71		6.86	11.50	498	-15.8	1.20	1.65
12:05	6.71		6.86	11.54	498	-35.5	0.99	1.69
12:10	6.71		6.85	11.62	499	-75.7	0.86	1.39
12:15	6.71		6.85	12.61	500	-48.9	0.90	1.26
12:20	6.71		6.85	11.59	500	53.2	0.83	1.00
Req. Limits for Last 3 Readings			+/- 0.1	3%	3%	+/- 10 mv	10% > 0.5	10% > 5

Pump Mfg & Model	Color	Odor	Purge Vol (ml)	Sample Depth (ft.)
peristaltic pump	black		4000	9.71

Sample Containers

Type & No.	Volume	Preservative	Type & No.	Volume	Preservative
3 vials	3 x 40mL	HCl			

HRP Associates, Inc.

197 Scott Swamp Rd.

Farmington, CT 06032

(860) 674-9570

Monitor Well Data Sheet

 Page 1 of 1

 Well ID: **Mw-108**
Site Background Information

Site Location:	63 West Merrick Rd, Lindenhurst, NY	Sampling Dates:	1/26 - 1/27/21
Job Number:	DEC1004.OM	Field Team Leader:	
Weather:	Clear 8. Sunny 34°F	Team Personnel:	DJA/KC

Ground Water Elevation Data

Date	Time	Sampler Name	Equipment Model	Depth to Water (ft)		Depth to Bottom (ft)	
1/26/21	7:33	DJA/KC	Solinst-101	uncorrected		uncorrected	
			corr. factor 0	corrected	7.11	corrected	14.17

Measurement Point: 2" pvc HW

DTB - after sampling = 14.38

Well Condition (circle one)

General Condition	Visible Well ID	Well Cap Present	Well Plumbness	Lock
Fair	No	Yes	Good	Yes
Concrete Collar	Ponded Water	Comments: 1 inch fab below. No Bulbs		
Good	No			

Well Purging Data

Date	Time						Sampler Initials	Instrument Calibration Date
	Equipment Set-up		Purging		Sample Collection			
	Start	Finish	Start	Finish	Start	Finish		
1/27/21	8:49	8:51	8:51	9:12	9:22	9:24	KB	1/26/21

Instrument Mfg & Model

pH	YSI 600XL-M / YSI 556 - Serial # 040286699
Temp.	
Sp. Cond.	
ORP	
DO	
Turbidity	HF Scientific DRT-15CE - Serial # HPA4

Initial Water Depth (ft): 7.00			Time: 8:49					
Time	Water Depth (ft)	Flow Rate (ml/min)	pH (s.u.)	Temp (°C)	Sp Con (uS)	ORP (mV)	DO (mg/l)	Turbidity (ntu)
8:56	7.02	150	6.08	10.82	511	81.5	2.97	5.36
9:01	7.02		6.21	10.79	502	75.9	3.35	3.77
9:06	7.02		6.23	10.76	496	76.9	3.34	4.33
9:11	7.02		6.24	10.67	481	76.6	3.56	2.77
9:16	7.02		6.25	10.88	485	79.1	3.35	2.66
9:21	7.02		6.26	10.64	470	78.8	3.59	1.71

Req. Limits for Last 3 Readings	+/- 0.1	3%	3%	+/- 10 mv	10% > 0.5	10% > 5
---------------------------------	---------	----	----	-----------	-----------	---------

Pump Mfg & Model	Color	Odor	Purge Vol (ml)	Sample Depth (ft.)
peristaltic pump	clear	—	4650	10.58

Sample Containers

Type & No.	Volume	Preservative	Type & No.	Volume	Preservative
3 vials	3 x 40mL	HCl			

HRP Associates, Inc.

197 Scott Swamp Rd.

Farmington, CT 06032

(860) 674-9570

Monitor Well Data Sheet

Page 1 of 1

Well ID: Mw-109

Site Background Information

Site Location:

63 West Merrick Rd, Lindenhurst, NY

Sampling Dates: 1-26-21 + 1-27-21

Job Number:

DEC1004.OM

Field Team Leader:

Weather:

Cloudy 32°

Team Personnel:

K6, DSA

Ground Water Elevation Data

Date	Time	Sampler Name	Equipment Model	Depth to Water (ft)		Depth to Bottom (ft)	
1/26/21	7:57	DSA	Solinst-101	uncorrected		uncorrected	
			corr. factor 0	corrected	0.71	corrected	34.60

Measurement Point:

2" pvc turn

DTB - after sampling =

34.25

Well Condition (circle one)

General Condition	Visible Well ID	Well Cap Present	Well Plumbness	Lock
Good	N3	Yes	Good	Yes
Concrete Collar	Ponded Water	Comments:		
Good	NO	bolts missing		

Well Purging Data

Date	Equipment Set-up		Purging		Sample Collection		Sampler Initials	Instrument Calibration Date
	Start	Finish	Start	Finish	Start	Finish		
1-26-21	8:26	9:32	9:32	7:10	7:10	9:12	DSA	1-25-21

Instrument Mfg & Model

pH	YSI 600XL-M / YSI 556 - Serial # 716230
Temp.	
Sp. Cond.	
ORP	
DO	
Turbidity	HF Scientific DRT-15CE - Serial # HRP #7

Initial Water Depth (ft): 0.64			Time: 8:26					
Time	Water Depth (ft)	Flow Rate (ml/min)	pH (s.u.)	Temp (°C)	Sp Con (uS)	ORP (mV)	DO (mg/l)	Turbidity (ntu)
8:25	0.65	100	6.19	7.25	14475	145.9	11.58	9.96
8:30	0.64		5.78	7.53	16777	140.3	10.16	2.71
8:45	0.64		5.79	9.36	19676	167.5	7.00	1.39
8:50	0.64		5.84	10.02	20789	172.8	6.81	1.64
9:55	0.64		5.88	10.20	21341	173.5	5.96	1.59
7:00	0.64		5.89	10.21	21634	172.5	5.95	1.07
7:05	0.64		5.90	10.24	21506	171.2	5.28	1.75
7:10	0.64		5.91	10.26	21446	169.6	5.15	2.81
Req. Limits for Last 3 Readings			+/- 0.1	3%	3%	+/- 10 mv	10% > 0.5	10% > 5

Pump Mfg & Model	Color	Odor	Purge Vol (ml)	Sample Depth (ft.)
peristaltic pump	Clear	—	3800	29.60

Sample Containers

Type & No.	Volume	Preservative	Type & No.	Volume	Preservative
3 vials	3 x 40mL	HCl			

HRP Associates, Inc.

197 Scott Swamp Rd.

Farmington, CT 06032

(860) 674-9570

Monitor Well Data Sheet

 Page 1 of 2

Well ID: MW-111

Site Background Information

Site Location:

63 West Merrick Rd, Lindenhurst, NY

Job Number:

DEC1004.OM

Weather:

cloudy 31

Sampling Dates:

1/26/21 ~ 1/27/21

Field Team Leader:

Team Personnel:

KG, OJA

Ground Water Elevation Data

Date	Time	Sampler Name	Equipment Model	Depth to Water (ft)	Depth to Bottom (ft)
1/26/21	7:49	OJA	Solinst-101 corr. factor 0	uncorrected corrected 3.21	uncorrected corrected 34.30

Measurement Point:

2" pvc tw

DTB - after sampling = 34.27

Well Condition (circle one)

General Condition	Visible Well ID	Well Cap Present	Well Plumbness	Lock
good	NO	yes	good	yes
Concrete Collar	Ponded Water	Comments:		
good	NO	bolts missing tips broken		

Well Purging Data

Date	Time						Sampler Initials	Instrument Calibration Date
	Equipment Set-up		Purging		Sample Collection			
	Start	Finish	Start	Finish	Start	Finish		
1/11/21	9:25	10:03	10:03	11:08	11:08	11:10	OJA	1-25-21

Instrument Mfg & Model

pH	YSI 600XL-M / YSI 556 - Serial # 16630
Temp.	
Sp. Cond.	
ORP	
DO	
Turbidity	HF Scientific DRT-15CE - Serial # HRP 127

Initial Water Depth (ft): 2.92			Time: 9:59					
Time	Water Depth (ft)	Flow Rate (ml/min)	pH (s.u.)	Temp (°C)	Sp Con (uS)	ORP (mV)	DO (mg/l)	Turbidity (ntu)
10:08	3.36	109	6.70	9.53	5014	131.5	3.88	13.7
10:13	3.38		6.63	10.11	4770	139.4	3.35	11.5
10:18	3.38		6.57	10.68	4200	145.4	2.89	19.8
10:23	3.38		6.50	10.97	3619	150.3	2.52	19.9
10:28	3.38		6.42	11.09	3033	154.7	2.08	15.6
10:33	3.38		6.39	11.35	2613	157.9	1.82	19.9
10:38	3.38		6.33	11.36	2230	161.6	1.59	12.0
10:43	3.38		6.29	11.40	2014	164.5	1.90	12.9
10:48	3.38		6.27	11.42	1870	167.1	1.30	9.8
Req. Limits for Last 3 Readings			+/- 0.1	3%	3%	+/- 10 mv	10% > 0.5	10% > 5

Pump Mfg & Model	Color	Odor	Purge Vol (ml)	Sample Depth (ft.)
peristaltic pump	blue		6500	27.30

Sample Containers

Type & No.	Volume	Preservative	Type & No.	Volume	Preservative
3 vials	3 x 40mL	HCl			

(860) 674-9570

Page 2 of 2

Well ID: *Aw. 111*

cloudy 77

Team Personnel: K6/PJA

[illegible]

HRP Associates, Inc.

197 Scott Swamp Rd.

Farmington, CT 06032

(860) 674-9570

Monitor Well Data Sheet

Well ID: RW-1

Page 1 of 1

Site Background Information

Site Location:

63 West Merrick Rd, Lindenhurst, NY

Job Number:

DEC1004.OM

Weather:

Snow 30°

Sampling Dates:

7/24/21 + 11/27/21

Field Team Leader:

Team Personnel:

KC/LSA

Ground Water Elevation Data

Date	Time	Sampler Name	Equipment Model	Depth to Water (ft)	Depth to Bottom (ft)
7/26/21	7:17	SO-11	Solinst-101	uncorrected	uncorrected
			corr. factor 0	corrected 9.76	corrected 40.00

Measurement Point:

6" pvc 90

DTB - after sampling =

Well Condition (circle one)

General Condition	Visible Well ID	Well Cap Present	Well Plumbness	Lock
good	yes	yes	good	no
Concrete Collar	Ponded Water	Comments:		
yes	no			

Well Purging Data

Date	Time						Sampler Initials	Instrument Calibration Date
	Equipment Set-up		Purging		Sample Collection			
	Start	Finish	Start	Finish	Start	Finish		
1/28/21	1:47	1:57	1:57	2:36	2:36	2:38	CSA	1-28-21

Instrument Mfg & Model

pH	YSI 600XL-M / YSI 556 - Serial # 16030
Temp.	
Sp. Cond.	
ORP	
DO	
Turbidity	HF Scientific DRT-15CE - Serial # HPP #7

Initial Water Depth (ft):			Time:					
Time	Water Depth (ft)	Flow Rate (ml/min)	pH (s.u.)	Temp (°C)	Sp Con (uS)	ORP (mV)	DO (mg/l)	Turbidity (ntu)
2:00	10.73	110	6.92	7.49	313	68.0	1.07	16.2
2:05	8.73		6.74	10.60	319	73.0	0.43	38.0
2:10	9.73		6.65	10.35	324	76.9	0.37	9.9
2:15	10.73		6.62	11.42	335	83.4	0.26	10.0
2:20	10.73		6.62	11.92	329	87.4	0.26	4.98
2:25	9.73		6.61	11.97	323	89.4	0.23	4.52
2:30	9.73		6.60	11.96	323	91.0	0.17	2.02

Req. Limits for Last 3 Readings

+/- 0.1

3%

3%

+/- 10 mv

10% > 0.5

10% > 5

Pump Mfg & Model

Color

Odor

Purge Vol (ml)

Sample Depth (ft.)

peristaltic pump

none

-

2630

35.00

Sample Containers

Type & No.	Volume	Preservative
3 vials 1 plastic	3 x 40mL 250mL	HCl HNO3

Type & No.	Volume	Preservative

HRP Associates, Inc.

197 Scott Swamp Rd.

Farmington, CT 06032

(860) 674-9570

Monitor Well Data Sheet

 Page 1 of 2

 Well ID: **RW-2**
Site Background Information

Site Location:

63 West Merrick Rd, Lindenhurst, NY

Job Number:

DEC1004.OM

Weather:

Overcast 54°F

Sampling Dates:

1/26 - 1/27/21

Field Team Leader:

Team Personnel:

DJA, KG

Ground Water Elevation Data

Date	Time	Sampler Name	Equipment Model	Depth to Water (ft)		Depth to Bottom (ft)	
1/24/21	7:55	DJA/KG	Solinst-101	uncorrected		uncorrected	
			corr. factor 0	corrected	11.0	corrected	43.00

Measurement Point:

6" pvc steel well

DTB - after sampling =

34.97

Well Condition (circle one)

General Condition	Visible Well ID	Well Cap Present	Well Plumbness	Lock
Fair	Yes	Yes	Good	No

Concrete Collar	Ponded Water	Comments:
N/A	Yes	Dyno = MW-A09:57

Well Purging Data

Date	Equipment Set-up		Time Purging		Sample Collection		Sampler Initials	Instrument Calibration Date
	Start	Finish	Start	Finish	Start	Finish		
1/24/21	8:19	5:27	8:20	9:31	9:31	9:37	KG	1/24/21

Instrument Mfg & Model

pH	YSI 600XL-M / YSI 556 - Serial # 040286680
Temp.	
Sp. Cond.	
ORP	
DO	
Turbidity	HF Scientific DRT-15CE - Serial # H414

Initial Water Depth (ft):			Time:					
Time	Water Depth (ft)	Flow Rate (ml/min)	pH (s.u.)	Temp (°C)	Sp Con (uS)	ORP (mV)	DO (mg/l)	Turbidity (ntu)
8:30	1.07	180	8.54	10.75	7176	14.4	0.27	36.6
8:35	1.13		8.62	10.95	6965	-305.3	0.70	32.5
8:40	1.15		8.65	10.94	6900	-312.2	0.70	32.2
8:45	1.17		8.69	11.03	6793	-326.2	0.72	51.1
8:50	1.18		8.73	11.21	6739	-334.6	0.75	52.7
8:55	1.19		8.77	11.21	6637	-338.2	0.74	51.7
9:00	1.20		8.80	11.34	6505	-341.4	0.73	32.7
9:05	1.20		8.85	11.24	6362	-346.5	0.72	21.5
9:10	1.20		8.87	11.31	6240	-348.4	0.62	18.30

Req. Limits for Last 3 Readings	+/- 0.1	3%	3%	+/- 10 mv	10% > 0.5	10% > 5
---------------------------------	---------	----	----	-----------	-----------	---------

Pump Mfg & Model	Color	Odor	Purge Vol (ml)	Sample Depth (ft.)
peristaltic pump	gray/white/clear	666666	11520	38.05 34.00

Sample Containers

Type & No.	Volume	Preservative	Type & No.	Volume	Preservative
3 vials	3 x 40mL	HCl			
1 plastic	250mL	HNO3			

$10\% > 5$

(860) 674-9570

Well ID: MW-4s

Page 1 of 1

Team Personnel: DJM, KS

DTB - after sampling =

Type & No.	Volume	Preservative
3 vials	3 x 40mL	HCl

HRP Associates, Inc.

197 Scott Swamp Rd.

Farmington, CT 06032

(860) 674-9570

Monitor Well Data Sheet

Page 1 of 1

Well ID: MW-110

Site Background Information

Site Location:

63 West Merrick Rd, Lindenhurst, NY

Job Number:

DEC1004.OM

Weather:

Overcast 37°F

Sampling Dates:

1/26 + 1/27/21

Field Team Leader:

Team Personnel:

DJA, JB

Ground Water Elevation Data

Date	Time	Sampler Name	Equipment Model	Depth to Water (ft)	Depth to Bottom (ft)
1/26/21		KE/DJA	Solinst-101	uncorrected	uncorrected
			corr. factor 0	corrected	corrected 34.39

Measurement Point:

2" pvc *new*

DTB - after sampling =

Well Condition (circle one)

General Condition	Visible Well ID	Well Cap Present	Well Plumbness	Lock
Concrete Collar	Ponded Water	Comments:		
		Unable to locate		

Well Purging Data

Date	Time						Sampler Initials	Instrument Calibration Date
	Equipment Set-up		Purging		Sample Collection			
	Start	Finish	Start	Finish	Start	Finish		

Instrument Mfg & Model

pH	YSI 600XL-M / YSI 556 - Serial #
Temp.	
Sp. Cond.	
ORP	
DO	
Turbidity	HF Scientific DRT-15CE - Serial #

Initial Water Depth (ft):			Time:		Sp Con (uS)	ORP (mV)	DO (mg/l)	Turbidity (ntu)
Time	Water Depth (ft)	Flow Rate (ml/min)	pH (s.u.)	Temp (°C)				
	Unable to locate							
Req. Limits for Last 3 Readings			+/- 0.1	3%	3%	+/- 10 mv	10% > 0.5	10% > 5

Pump Mfg & Model	Color	Odor	Purge Vol (ml)	Sample Depth (ft.)
peristaltic pump				

Sample Containers

Type & No.	Volume	Preservative	Type & No.	Volume	Preservative
3 vials	3 x 40mL	HCl			



MOVE YOUR ENVIRONMENT FORWARD

PROJECT TITLE: NY DEC - Lindenhurst, NY			
PROJECT NUMBER: DEC1004 OM		TASK NUMBER:	
SUBJECT: Survey			
DESIGNED:	DATE: 1/26/21	CHECKED:	DATE:

Δ	\pm	HI	—	Elev	Notes
MW-109 pvc	5.47	668		1.21	pvc elevation taken from Table 1
ground			5.14	1.54	
RW-2 steel			5.17	1.51	
ground			4.51	2.17	
MW-109 pvc			5.47	1.21	✓
Δ	\pm	HI	—	Elev	Notes
MW-105 pvc	5.92	14.50		8.58	pvc elevation taken from Table 1
ground			4.98	9.52	
MW-103 pvc			5.93	8.57	historically from Table 1 8.57 ✓
ground			5.35	7.15	
MW-55 pvc			6.17	8.33	
ground			5.53	8.97	
RW-1 Alm			3.03	11.47	
ground			5.27	9.23	
MW-45 pvc			6.09	8.41	
ground			5.65	8.85	
MW-4d pvc			6.24	8.26	
ground			5.67	8.83	
MW-105 pvc			5.92	8.58	✓
Δ	\pm	HI	—	Elev	Notes
MW-105 pvc	4.14	12.72		8.58	pvc elevation taken from Table 1
MW-103 pvc			4.15	8.57	historically from Table 1 8.57 ✓
MW-25 pvc			5.60	7.12	
ground			5.26	7.46	
TP-1			6.70	6.02	
BS-1	5.28	11.30			
MW-111 pvc			6.94	4.36	
ground			6.38	4.92	
TP-2			4.33	6.97	
BS-2	6.34	13.31			
MW-105 pvc			4.71	8.60	✓

TABLE 1
GROUND-WATER ELEVATION DATA AND WELL CONSTRUCTION DETAILS
ACTIVE INDUSTRIAL, LINDENHURST, NEW YORK
LAW PROJECT NO. 22000-0-0019

WELL	DATE DRILLED	LOCATION	TOTAL DEPTH (FT. BGS)	SCREEN INTERVAL (FT. BGS)	CASING WELL DIAMETER (INCHES)	TOP OF PVC CASING ELEVATION (FT. RELATIVE TO MSL)	12/13/2001		3/7/2002	
							DEPTH TO GROUND-WATER (FT. BELOW TOP OF PVC CASING)	GROUND-WATER LEVEL ELEVATION (FT. RELATIVE TO MSL)	DEPTH TO GROUND-WATER (FT. BELOW TOP OF PVC CASING)	GROUND-WATER LEVEL ELEVATION (FT. RELATIVE TO MSL)
MW-101	06/05/01	On-site	14.22	5-15	2	8.83	7.03	1.80	7.78	1.05
MW-102	06/05/01	On-site	14.10	5-15	2	8.66	7.10	1.56	7.65	1.01
MW-103	06/05/01	On-site	13.26	5-15	2	8.57	7.06	1.51	7.62	0.95
MW-104	06/05/01	On-site	14.24	5-15	2	8.70	7.25	1.45	7.87	0.83
MW-105	06/05/01	On-site	14.23	5-15	2	8.58	7.12	1.46	7.73	0.85
MW-106	06/05/01	On-site	14.11	5-15	2	8.50	7.10	1.40	7.61	0.89
MW-107	06/04/01	On-site	14.30	5-15	2	8.44	7.02	1.42	7.66	0.78
MW-108	06/04/01	On-site	14.17	5-15	2	8.82	7.41	1.41	8.13	0.69
MW-109	06/11/01	Off-site	34.60	25-35	2	1.21	0.72	0.49	2.00	-0.79
MW-110	06/12/01	Off-site	34.39	25-35	2	NA	1.34	NA	2.46	NA
MW-111	06/12/01	Off-site	34.30	25-35	2	NA	3.25	NA	4.10	NA
RW-1	06/06/01	On-site	40.00	10-35	6	NA	7.95	NA	NM	NA
RW-2	06/07/01	Off-site	43.00	12-37	6	NA	NM	NA	NM	NA

Notes:

NM - Not Measured

NA - Not Available

FT. BGS-feet below ground surface

FT. TOC - feet below top of pvc casing

MSL-mean sea level