



MOVE YOUR ENVIRONMENT FORWARD

QUARTERLY OPERATION AND MAINTENANCE REPORT – THIRD QUARTER 2021

Active Industrial Uniform Superfund Site

63 West Merrick Road
Lindenhurst, New York

NYSDEC Site Number: 152125

Prepared For:

New York State Department of Environmental Conservation
625 Broadway
Albany, New York 12233
Contract #D009808

Prepared By:

HRP Associates, Inc.
197 Scott Swamp Road
Farmington, CT 06032

HRP #: DEC1004.OM

Issued On: November 8, 2021



TABLE OF CONTENTS

1.0	INTRODUCTION	1
2.0	SITE BACKGROUND	2
2.1	Site Location and Description	2
2.2	Site Geology and Hydrogeology.....	2
2.3	Background and Remedial History	2
2.4	Site Cleanup Objectives	3
3.0	OPERATIONS AND MAINTENANCE PROGRAM	4
3.1	Groundwater Extraction and Treatment System Operations and Maintenance	4
3.2	Site Maintenance Activities.....	4
4.0	MONITORING PROGRAM	6
4.1	Groundwater Sampling	6
5.0	MAINTENANCE ISSUES AND RECOMMENDED SOLUTIONS.....	11
6.0	FUTURE ACTIVITIES	12
7.0	PROGRESS TOWARD CLEANUP OBJECTIVES	13

Figures

Figure 1	Site Location
Figure 2	Site Map Showing Groundwater Sampling Locations
Figure 3	Site and Surrounding Area: Groundwater Sampling Locations
Figure 4	Inferred Groundwater Contour Map

Tables

Table 1	Groundwater Sampling Requirements and Schedule
Table 2	Target VOCs in Groundwater
Table 3	Metals in Groundwater

Appendices

Appendix A	Operation and Maintenance Reports
Appendix B	Temporal Variations of Measured Parameters

General Information

Project/Site Information:

Active Industrial Uniform Superfund Site
63 West Merrick Road
Lindenhurst, New York

Consultant Information:

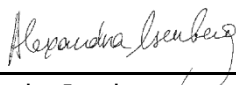
HRP Associates, Inc.
197 Scott Swamp Road
Farmington, CT 06032
Phone: 860-674-9570
E-mail: david.feinson@hrpassociates.com
Project Number: DEC1004.OM

Client Information:

New York State Department of
Environmental Conservation
625 Broadway
Albany, NY 12233

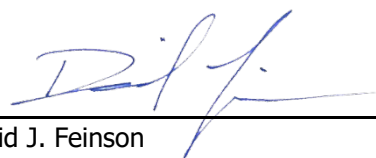
Report Date: 11/8/2021

Report Author:



A. Sasha Isenberg
Senior Project Scientist

Project Manager:



David J. Feinson
Project Manager

1.0 INTRODUCTION

HRP Associates, Inc. (HRP) has been contracted by the New York State Department of Environmental Conservation (NYSDEC) for Site management tasks under Standby Engineering Contract D009808. Under this contract, on-going Site management was assigned to HRP for the Active Industrial Uniform Superfund Site, NYSDEC Site No. 152125, located at 63 West Merrick Road, Lindenhurst, New York (herein referred to as the "Site"). The Site location is depicted on **Figure 1**. The Site is currently listed on the New York State Registry of Inactive Hazardous Waste Sites as a Class 2 site. This designation is for sites at which the disposal of hazardous waste has been confirmed and the presence of such hazardous waste or its components or breakdown products represents a significant threat to public health or the environment; or sites at which hazardous waste disposal has not been confirmed, but the site has been listed on the Federal National Priorities List (NPL). The United States Environmental Protection Agency (USEPA) oversaw the operations and maintenance (O&M) and Site management from 2001 to 2012. NYSDEC assumed responsibility for Site management in 2012. The on-going Site management was assigned to HRP in April 2020. This work assignment (WA) includes the following tasks:

- Task 1 – Scoping
- Task 2 – Site Management Plan
- Task 3 – Operation and Maintenance
- Task 4 – Monitoring and Reporting
- Task 5 – Periodic Review and Report
- Task 6 – Remedial System Optimization

This quarterly Operations and Maintenance (O&M) Report summarizes the O&M and monitoring activities completed during the third quarter of 2021 (July through September 2021). This report provides a description of the work performed throughout the reporting period, a discussion of the data obtained, and documents the relevant performance monitoring.

2.0 SITE BACKGROUND

2.1 Site Location and Description

The Active Industrial Uniform Site is a 0.5-acre parcel of land located at 63 West Merrick Road (a.k.a. West Montauk Highway, or State Route 27A). The Site is accessed via a driveway from Tompkins Lane. A fence with locked gate completely surrounds the property. The Site location is shown on **Figure 1**.

The following features are present at the Site:

- 35'x35' treatment shed;
- The remnants of two concrete floor slabs (east and northwest) where one-story concrete block buildings were formerly located (both buildings were demolished in February 1995);
- A paved parking area.

Site features are depicted on **Figure 2**, and general Site area features are shown on **Figure 3**.

2.2 Site Geology and Hydrogeology

According to the surficial materials map of New York, the surficial geology of the Site consists of outwash sand and gravel, defined as coarse to fine gravel with sand with variable thickness (2-20 meters). Based on reported observations from shallow hand auger soil vapor points installed during the 2007/2008 soil vapor evaluation, the upper ten feet of overburden in the vicinity of the Site is typified by loose medium to coarse sand. The ground surface and uppermost overburden varies from disturbed native sand to topsoil, silty sand, or asphalt.

Depth to groundwater ranged from 0.25 (in MW-109) to 9.25 (in RW-1) feet below ground surface, as measured during the July 2021 groundwater sampling event. Groundwater flows predominantly to the south.

2.3 Background and Remedial History

This facility operated as a dry cleaner and laundry between 1970 and 1987. Historically, there were two dry cleaning solvent storage areas at the Site: an underground solvent storage tank located on the northwest corner of the property that was removed in 1985, and two above ground solvent storage tanks that were located on a concrete pad near the southwest corner of the property and were removed in October of 1987.

Previous investigations revealed two areas of historical releases of tetrachloroethene (PCE) that have impacted the soil and groundwater at the Site. Remediation at the Site achieved soil cleanup objectives for commercial use and is considered complete. Residual contamination in the soil and groundwater is being managed under a Site Management Plan. A Groundwater Extraction & Treatment (GWE&T) System was installed to control a chlorinated solvent groundwater contamination plume emanating from the Site.

The GWE&T system operated between 2001 and 2018. The GWE&T system was shut down in 2018 under NYSDEC approval. The air stripping towers were decommissioned in late 2020 and removed from the Site in 2021.

2.4 Site Cleanup Objectives

The remedial goals for the Site have been established through the remedy selection process and documented in the Record of Decision (ROD), dated March 26, 1997. According to the ROD, the "overall goal is to meet all appropriate Standards, Criteria, and Guidance (SCGs) and to be protective of human health and the environment". The site-specific goals are presented below:

- Reduce, control, or eliminate to the extent practicable the contamination present within the soils on the Site;
- Eliminate the threat to surface waters by remediating to the extent practicable contaminated groundwater;
- Eliminate the potential for direct human or animal contact with the contaminated soils on the Site;
- Mitigate the impacts of contaminated groundwater to the environment;
- Prevent, to the extent possible, migration of contaminants;
- Provide for attainment of SCGs for groundwater quality at the limits of the area of concern, to the extent practicable; and
- Reduce the threat to homes from high groundwater.

3.0 OPERATIONS AND MAINTENANCE PROGRAM

The operations and maintenance program for the Active Industrial Uniform Site is presented below.

- Periodic groundwater monitoring, including reporting sampling data to NYSDEC;
- Inventory/inspections/maintenance of all groundwater monitoring wells;
- The GWE&T system was shut down on November 30, 2018, under NYSDEC approval. The air stripping towers were decommissioned in late 2020 and removed in 2021. As such, only building maintenance, including routine fire/safety inspection of the treatment plant, is performed on a monthly basis;
- Site maintenance, including (but not limited to) structures and Site grounds upkeep and maintenance (the length of the grass should not exceed six inches per Town ordinance) conducted on a monthly basis or as needed during the summer.

HRP performed the groundwater sampling at the Site as well as the Site maintenance activities. Summary reports prepared during each visit are included in **Appendix A**. Below is a summary of activities performed during the third quarter of 2021.

3.1 Groundwater Extraction and Treatment System Operations and Maintenance

The GWE&T consists of two 4-inch diameter extraction wells, RW-1 and RW-2, designed to pump groundwater to the treatment system housed in the system remediation building. RW-1 is located in the southwestern portion of the Site. RW-2 is located off-site, approximately 1,500 feet southwest of the Site (see **Figures 2 and 3**).

The GWE&T system was shut down in 2018 under NYSDEC approval. The air stripping towers were decommissioned in late 2020 and removed from the Site in 2021. Prior to 2020, an inspection of RW-2 indicated that the screen had collapsed. The previous consultants' attempts at redevelopment of RW-2 were not successful.

3.2 Site Maintenance Activities

Routine Maintenance

On July 1, July 9, July 27-28, August 31, and September 28, 2021, HRP performed routine maintenance and grounds-keeping activities, including mowing the lawn. In addition, lawn was cut on August 13, 2021.

Monthly inspections of fire extinguisher and emergency lighting and exit sign tests were performed on July 29, August 31, and September 28, 2021. Emergency lighting passed the monthly tests. No issues were identified. One smoke alarm was installed in the building during the September 28 inspection.

Non-Routine Maintenance

On September 15, 2021, HRP collected soil samples from the on-site drums and analyzed for leachable chromium, lead, and silver via a Toxicity Characteristic Leaching Procedure (TCLP).

Leachable lead was detected at 56.3 ug/L. Leachable chromium and silver were not detected above the laboratory reporting limits. Drum disposal activities are being coordinated and anticipated to be completed during the fourth quarter of 2021.

4.0 MONITORING PROGRAM

The monitoring program for the Active Industrial Uniform Superfund Site includes periodic sampling of select groundwater monitoring wells and two extraction wells (see Table 1 below), including 11 on-site monitoring wells (MW-101 through MW-108, MW-4D, MW-5S, and RW-1) and four off-site monitoring wells (MW-109, MW-111, MW-2S, and RW-2). The locations of the wells are depicted on **Figures 2** and **3**.

Table 1: Groundwater Sampling Requirements and Schedule

Sampling Location	Sampling Frequency			Analytical Parameters
	Monthly	Quarterly	Semi-Annual	VOC (EPA Method 8260)
MW-101			X	X
MW-102			X	X
MW-103		X	X	X
MW-104		X	X	X
MW-105		X	X	X
MW-106		X	X	X
MW-107		X	X	X
MW-108			X	X
MW-109			X	X
MW-111			X	X
MW-2S		X	X	X
MW-4D		X	X	X
MW-5S		X	X	X
RW-1		X	X	X
RW-2		X	X	X

4.1 Groundwater Sampling

On July 27-28, 2021, HRP conducted the semi-annual groundwater sampling event. Groundwater samples were collected from each monitoring well and submitted to a State-certified laboratory, Eurofins/TestAmerica, and analyzed for VOCs via the EPA 8260 method and metals via EPA 6010 method. The analytical results are summarized in Tables 2 and 3 below.

Table 2: Target VOCs in Groundwater

Monitoring Well ID and Location	Site-Specific VOCs Concentrations, ug/L							
	PCE		TCE		Cis-1,2-DCE		Vinyl Chloride	
Sampling Period	2021 Q2	2021 Q3	2021 Q2	2021 Q3	2021 Q2	2021 Q3	2021 Q2	2021 Q3
MW-4D (on-site)	16	2.0	7.5	1.1	13	6.9	2.6	4.7
MW-5S (on-site)	0.35	<1	<1	<1	<1	<1	<1	<1
MW-101 (on-site)	NS	0.9	NS	0.71	NS	<1	NS	<1
MW-102 (on-site)	NS	1.7	NS	0.42	NS	<1	NS	<1
MW-103 (on-site)	3.3	4.5	0.33	0.58	<1	<1	<1	<1
MW-104 (on-site)	28	43	3.7	6.8	0.38	0.45	<1	<1
MW-105 (on-site)	4.9	7.8	<1	3.9	5.0	370	0.58	22
MW-105 Dup (MW-B)	4.9	8.4	<1	3.8	4.8	360	0.65	22
MW-106 (on-site)	16	11	4.8	5.5	1.8	7.8	<1	<1
MW-107 (on-site)	2.1	4.4	0.88	1.1	0.32	0.43	<1	<1
MW-108 (on-site)	NS	3.5	NS	<1	NS	0.33	NS	<1
RW-1 (on-site)	<1	<1	<1	<1	<1	<1	<1	<1
MW-2S (off-site)	0.85	1.1	<1	<1	3.9	9.4	0.87	1.2
MW-109 (off-site)	NS	<1	NS	0.63	NS	1.1	NS	<1
MW-111 (off-site)	NS	<1	NS	<1	NS	<1	NS	<1
RW-2 (off-site)	<1	<1	<1	<1	<1	<1	<1	<1
RW-2 Dup (MW-A)	<1	<1	<1	<1	<1	<1	<1	<1
Class GA Groundwater Standard, ug/L	5		5		5		2	

Notes: 1 Parameter reported at a concentration greater than applicable regulatory standard/criterion
ND = not detected; NS = not sampled; ug/L = microgram per liter

Table 2 summarizes the on-site and off-site concentrations of the site-specific contaminants of concern (COCs), which include PCE and associated degradation products (trichloroethylene [TCE], cis-1,2-dichloroethylene [cis-1,2-DCE], and vinyl chloride). The results were compared to the previous, second quarter of 2021, findings. The previous data is included in the table for comparison purposes. Charts showing the variations of PCE, TCE, cis-1,2-DCE, and vinyl chloride in the monitoring wells are provided in **Appendix B**. Laboratory reports are provided directly to NYSDEC by the contracted laboratory.

The findings of the sampling are discussed below.

- **MW-4D:** The monitoring well is located in the southwestern portion of the Site and downgradient of the historical dry-cleaning activities. The well is screened at 60 to 70 feet below grade (fbg). Cis-1,2-DCE and vinyl chloride were detected in this monitoring well at concentrations exceeding the Class GA Groundwater Standards.
- **MW-5S:** The monitoring well is located in the western portion of the Site and screened at 14 to 24 fbg. None of the contaminants of concern were detected above the laboratory reporting limits.

- MW-101: The monitoring well is located on the northeastern portion of the Site and screened at 5-15 feet bgs. PCE and TCE were detected at concentrations below the Class GA Standards; cis-1,2-DCE and vinyl chloride were not detected above the laboratory detection limits.
- MW-102: The monitoring well is located on the north-central portion of the Site and screened at 5-15 feet bgs. PCE and TCE were detected at concentrations below the Class GA Standards; cis-1,2-DCE and vinyl chloride were not detected above the laboratory detection limits.
- MW-103: The monitoring well is located in the northern portion of the Site and screened at 5 to 15 fbg. PCE and TCE were detected at concentrations below the applicable Class GA Standards. Cis-1,2-DCE and vinyl chloride were not detected above the laboratory reporting limit.
- MW-104: The monitoring well is located on the western portion of the Site and screened at 5 to 15 fbg. PCE and TCE were detected in exceedance of the Class GA Standards. Cis-1,2-DCE was detected at a concentration below the Class GA Standards. Vinyl chloride was not detected above the laboratory reporting limit.
- MW-105: The monitoring well is located near the southwestern corner of the treatment building and screened at 5 to 15 fbg. PCE, cis-1,2-DCE, and vinyl chloride were detected in exceedance of the Class GA Standards. TCE was detected at a concentration below the Class GA Standards. Sample MW-B was collected as a duplicate of sample MW-105. Detected concentrations of PCE, TCE, cis-1,2-DCE, and vinyl chloride were similar between the two samples.
- MW-106: The monitoring well is located in the southeastern corner of the Site and screened at 5 to 15 fbg. PCE, TCE, and cis-1,2-DCE were detected in exceedance of the Class GA Standards. Vinyl chloride was not detected above the laboratory reporting limits.
- MW-107: The monitoring well is located in the southern portion of the Site and screened at 5 to 15 fbg. PCE, TCE, and cis-1,2-DCE were detected at concentrations below the Class GA Standards. Vinyl chloride was not detected above the laboratory reporting limits.
- MW-108: The monitoring well is located in the southwestern corner of the Site and screened at 5 to 15 fbg. PCE and cis-1,2-DCE were detected at concentrations below the Class GA Standards. TCE and vinyl chloride were not detected above the laboratory reporting limits.
- RW-1: The 4-inch extraction well is located in the southwestern portion of the Site and screened at 10-35 feet bgs. None of the contaminants of concern were detected above the laboratory reporting limits.
- MW-2S: The monitoring well is located on Tompkins Street, approximately 200 feet to the south of the Site and screened at 12 to 22 fbg. Cis-1,2-DCE was detected in exceedance of the Class GA Standards. PCE and vinyl chloride were detected below the Class GA Standards. TCE was not detected above the laboratory reporting limit.
- MW-109: The monitoring well is located on Orchard Street, approximately 1,700 feet to the southwest of the Site and screened at 25-35 feet bgs. TCE and cis-1,2-DCE were detected at concentrations below the Class GA Standards. PCE and vinyl chloride were not detected above the laboratory reporting limits.

- MW-111: The monitoring well is located on Lane Street, approximately 500 feet to the southwest of the Site, and screened at 25-35 feet bgs. None of the contaminants of concern were detected above the laboratory reporting limits.
- RW-2: The 4-inch extraction well is located on Orchard Street, approximately 1,500 feet to the southwest of the Site, and screened at 12-37 feet bgs. Sample MW-A was collected as a duplicate of sample RW-2. PCE, TCE, cis-1,2-DCE, and vinyl chloride were not detected above the laboratory reporting limits in either of the sample.

In addition, groundwater from recovery wells RW-1 and RW-2 was analyzed for metals. The results are presented in Table 3 below:

Table 3: Metals in groundwater

Sample Name:			RW-1	RW-2	RW-2 Dup	RW-1	RW-2	RW-2 Dup
Analytes	Unit	Class GA Criteria	Sampled 4/27/2021			Sampled 7/27-28/2021		
Aluminum, Total	ug/l	NE	< 200	< 200	< 200	165	170	163
Antimony	ug/l	3	6.8	(< 20.0)	(< 20.0)	(< 20.0)	(< 20.0)	(< 20.0)
Arsenic	ug/l	25	< 15.0	< 15.0	< 15.0	< 15.0	< 15.0	< 15.0
Barium	ug/l	1,000	20.6	18.2	17.8	21.4	14.3	13.2
Beryllium	ug/l	3	< 2.0	< 2.0	< 2.0	< 2.0	< 2.0	< 2.0
Cadmium	ug/l	5	< 4.0	< 4.0	< 4.0	< 4.0	< 4.0	< 4.0
Calcium	ug/l	NE	24,000	38,000	38,000	31,100	21,500	20,200
Chromium, Total	ug/l	50	< 10.0	< 10.0	< 10.0	< 10.0	< 10.0	< 10.0
Cobalt	ug/l	NE	< 50.0	< 50.0	< 50.0	< 50.0	< 50.0	< 50.0
Copper	ug/l	200	< 25.0	< 25.0	< 25.0	< 25.0	12.2	12.2
Iron	ug/l	300	< 150	3,040	2,820	399	4,080	3,830
Lead	ug/l	25	2.5	< 10.0	< 10.0	< 10.0	5.4	4.6
Magnesium	ug/l	35,000	3,820	50,100	50,300	5,120	15,500	14,700
Manganese	ug/l	300	1,660	88.8	89.0	2,250	101	95.3
Mercury	ug/l	0.7	< 0.20	< 0.20	< 0.20	< 0.20	< 0.20	< 0.20
Nickel	ug/l	100	< 40.0	< 40.0	< 40.0	< 40.0	< 40.0	< 40.0
Potassium, Total	ug/l	NE	2,720	21,900	22,200	2,950	10,100	9,560
Selenium	ug/l	10	(< 20.0)	(< 20.0)	(< 20.0)	(< 20.0)	(< 20.0)	(< 20.0)
Silver	ug/l	50	< 10.0	< 10.0	< 10.0	< 10.0	< 10.0	< 10.0
Sodium, Total	ug/l	20,000	35,700	556,000	546,000	46,400	184,000	174,000
Thallium	ug/l	0.5	(< 20.0)	(< 20.0)	(< 20.0)	(< 20.0)	(< 20.0)	(< 20.0)
Vanadium	ug/l	NE	< 50.0	< 50.0	< 50.0	< 50.0	< 50.0	< 50.0
Zinc	ug/l	2,000	2.7	4.7	2.6	3.3	20.3	20.3

In addition to the constituents listed in the tables, the following contaminants were detected in the groundwater samples at concentrations below the Class GA Standards:

- MW-4D:
1,1-Dichloroethane detected at 0.50 µg/L (Class GA Standards = 5 µg/L);
Methyl tert-butyl ether detected at 0.64 µg/L (Class GA Standards = 10 µg/L);
Trans-1,2-dichloroethene detected at 0.40 µg/L (Class GA Standards = 5 µg/L).
- MW-102
Chloroform detected at 0.44 µg/L (Class GA Standards = 7 µg/L).
- MW-105
Chloroethane detected at 0.39 µg/L (Class GA Standards = 5 µg/L);
Trans-1,2-dichloroethene detected at 4.0 µg/L (Class GA Standards = 5 µg/L);
1,2-Dichlorobenzene detected at 0.44 µg/L (Class GA Standards = 3 µg/L).
- MW-109
1,1-Dichloroethane detected at 0.59 µg/L (Class GA Standards = 5 µg/L);
Methyl tert-butyl ether detected at 0.55 µg/L (Class GA Standards = 10 µg/L).

5.0 MAINTENANCE ISSUES AND RECOMMENDED SOLUTIONS

No maintenance issues were identified during the third quarter of 2021, except for those that have been corrected as discussed in **Section 3.2** above.

6.0 FUTURE ACTIVITIES

Future maintenance and monitoring activities at the Site include the following:

- Routine monthly maintenance activities will continue; and
- Quarterly groundwater sampling is scheduled to be completed in the fourth quarter of 2021.

7.0 PROGRESS TOWARD CLEANUP OBJECTIVES

Based on review of O&M field notes and laboratory analysis of samples collected from the groundwater well network, additional monitoring is recommended to monitor the natural attenuation of the dissolved-phase chlorinated solvents detected in groundwater.

FIGURES



Copyright:© 2013 National Geographic Society, i-cubed

0 1,000 2,000 4,000 6,000 8,000
 Feet
 1 inch = 2,000 feet






USGS Quadrangle Information
 Quad ID: 40073-F3
 Name: Bay Shore West, New York
 Date Rev: 1978
 Date Pub: 1979

Figure 1
Site Location
63 West Montauk Highway
Lindenhurst, New York
NYSDEC Site No. 152125
HRP # DEC1004.OM
Scale 1" = 2,000'

HRP
 MOVE YOUR ENVIRONMENT FORWARD
 ONE FAIRCHILD SQUARE
 SUITE 110
 CLIFTON PARK, NY 12065
 (518) 877-7101
 HRPASSOCIATES.COM

Legend

-  Groundwater Recovery Well
-  Groundwater Monitoring Well
-  Approximate Property Line



MOVE YOUR ENVIRONMENT FORWARD

ONE FAIRCHILD SQUARE
SUITE 110
CLIFTON PARK, NY 12065
(518) 877-7101
HRPASSOCIATES.COM

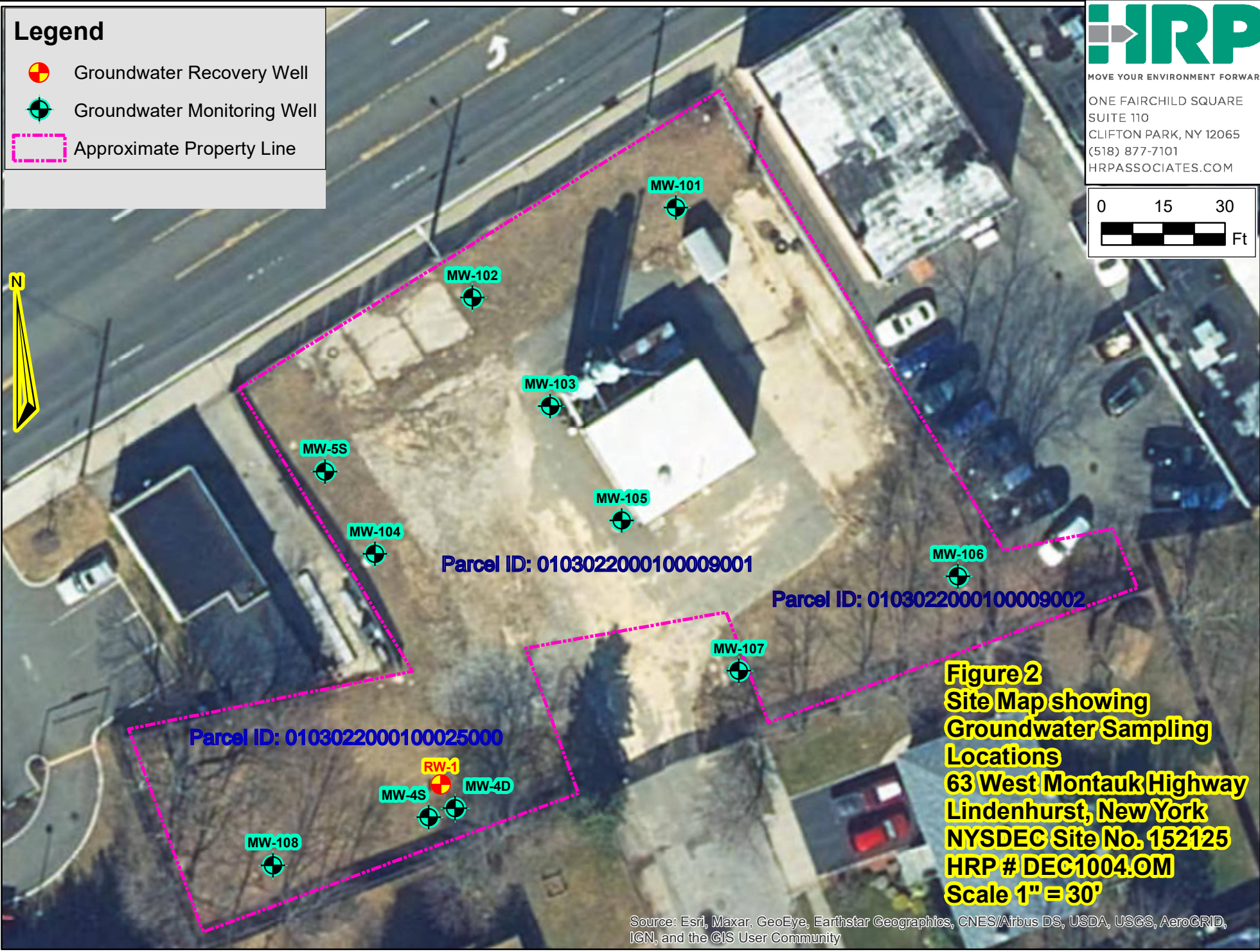


Figure 2
Site Map showing
Groundwater Sampling
Locations
63 West Montauk Highway
Lindenhurst, New York
NYSDEC Site No. 152125
HRP # DEC1004.OM
Scale 1" = 30'

Source: Esri, Maxar, GeoEye, Earthstar Geographics, CNES/Airbus DS, USDA, USGS, AeroGRID, IGN, and the GIS User Community

Path: S:\Data\NYSDEC - NEW YORK STATE DEPARTMENT OF ENVIRONMENTAL CONSERVATION\BABYLON\63 WEST MERRICK ROAD\DEC1004\OM\GIS\Figure 3 - 63 West Montauk.mxd





HRP
MOVE YOUR ENVIRONMENT FORWARD

ONE FAIRCHILD SQUARE
SUITE 110
CLIFTON PARK, NY 12065
(518) 877-7101
HRPASSOCIATES.COM

Site and Surrounding Area:
Groundwater Sampling Locations

63 West Montauk Highway
Lindenhurst, New York
NYSDEC Site No. 152125

ASI
DESIGNED BY:

BOB
DRAWN BY:

DJF
REVIEWED BY:

11X17
SHEET SIZE:

08/04/2020
DATE:

DEC1004.OM
PROJECT NUMBER:

North

1 in = 150 ft

0

75

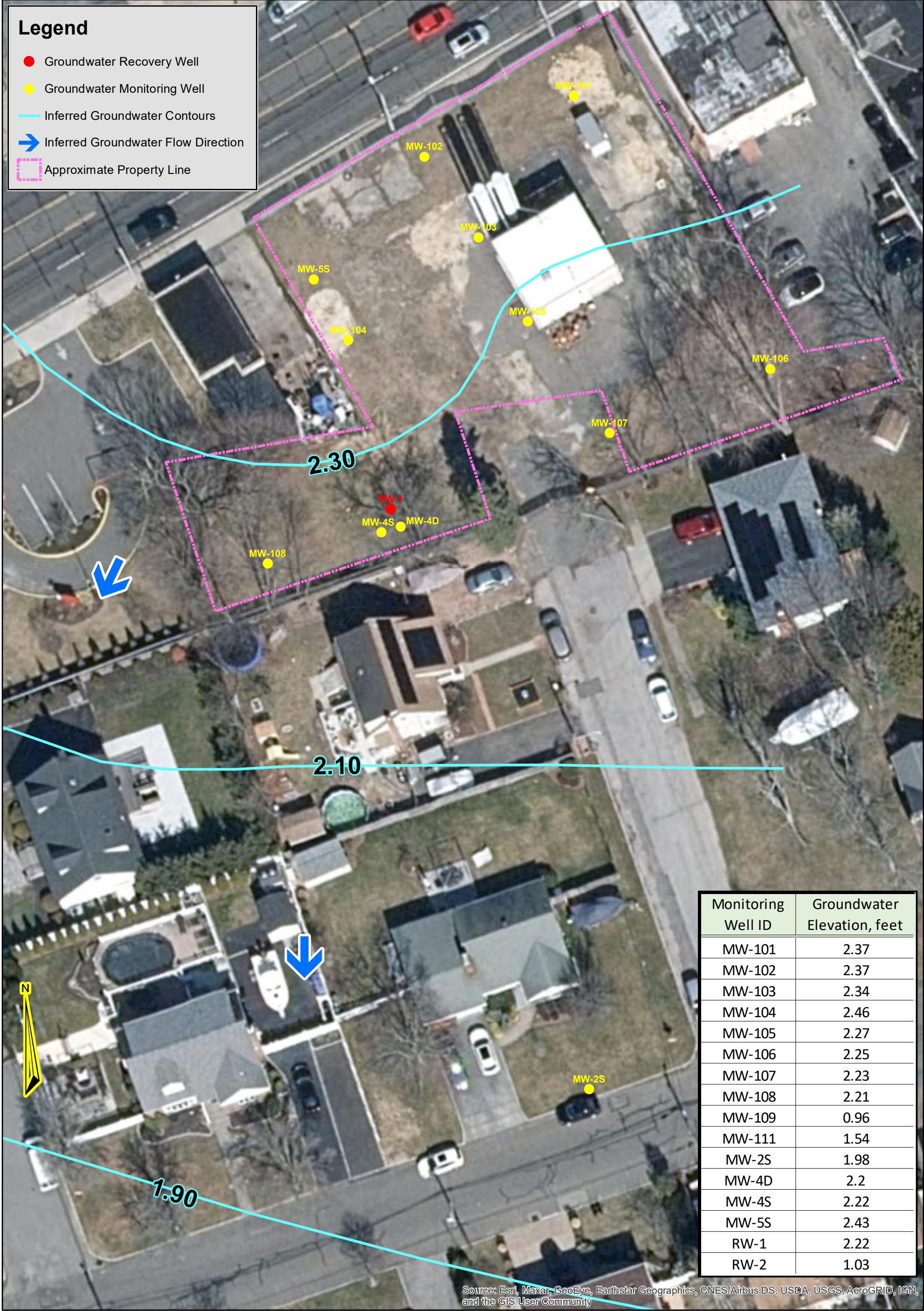
150

Ft

FIGURE

3

Path: S:\Data\NINYDEC - NEW YORK STATE DEPARTMENT OF ENVIRONMENTAL CONSERVATION\BABLON\63 WEST MERRICK ROAD\DEC1004\OM\GIS\63 West Montauk - Inferred Groundwater July 2021.mxd



MOVE YOUR ENVIRONMENT FORWARD
ONE FAIRCHILD SQUARE
SUITE 110
CLIFTON PARK, NY 12065
(518) 877-7101
HRPASSOCIATES.COM

Inferred Groundwater
Contour Map
July 2021

63 West Montauk Highway
Lindenhurst, New York
NYSDEC Site No. 152125

ASI
DESIGNED BY:

BOB
DRAWN BY:

DJF
REVIEWED BY:

11X17
SHEET SIZE:

10/27/2021
DATE:

DEC1004.OM
PROJECT NUMBER:

North

1 in = 30 ft

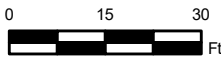


FIGURE
4

APPENDIX A

Operation and Maintenance Reports

Fire Safety Inspection Log
Active Industrial Uniform Site
NYSDEC Site No. 152125
63 West Merrick Road, Lindenhurst, NY

Monthly Fire Safety Inspection Items			
Item	Description	Result	
1	Exit signs internally or externally illuminated	Yes	No
2	Smoke alarms tested and functioning	Yes	No
3	Water leaks/water damage observed inside building	Yes	No
4	Fire extinguishers within expiration or inspected annually	Yes	No
5	All fire extinguishers present	Yes	No
6	Electrical Breaker Panel Issues	Yes	No
7	Covers present on all junction boxes, electrical switches, and outlets	Yes	No
8	Any evidence of pests present inside building (rodents, insects, etc.)	Yes	No
9	Emergency lighting tested and functioning	Yes	No

Periodic System Testing and Inspection			
Item	Description	Frequency	Date Last Performed
10	Sprinkler system testing	Annual	
11	Battery powered emergency lighting tested	Annual	
12	Fire Extinguishers annual inspection	Annual	
13	Emergency Lighting Testing	Monthly	

Inspected By: *OJA*
Inspection Date: *7-29-21*

Other Items Noted:

Fire Safety Inspection Log
Active Industrial Uniform Site
NYSDEC Site No. 152125
63 West Merrick Road, Lindenhurst, NY

Monthly Fire Safety Inspection Items			
Item	Description	Result	
1	Exit signs internally or externally illuminated	<u>Yes</u>	No
2	Smoke alarms tested and functioning <i>NO smoke alarms</i>	Yes	No
3	Water leaks/water damage observed inside building	Yes	<u>No</u>
4	Fire extinguishers within expiration or inspected annually	<u>Yes</u>	No
5	All fire extinguishers present	<u>Yes</u>	No
6	Electrical Breaker Panel Issues	Yes	<u>No</u>
7	Covers present on all junction boxes, electrical switches, and outlets	<u>Yes</u>	No
8	Covers present on all junction boxes, electrical switches, and outlets	Yes	<u>No</u>
9	Any evidence of pests present inside building (rodents, insects, etc.)	Yes	No
9	Emergency lighting tested and functioning	<u>Yes</u>	No

Periodic System Testing and Inspection				
Item	Description	Frequency	Date Last Performed	Date Due
10	Sprinkler system testing	Annual		
11	Battery powered emergency lighting tested	Annual		
12	Fire Extinguishers annual inspection	Annual		
13	Emergency Lighting Testing	Monthly	8/31/21	

Inspected By: *DSA/KC*
 Inspection Date: *8/31/21*
 Other Items Noted:

Fire Safety Inspection Log
Active Industrial Uniform Site
NYSDEC Site No. 152125
63 West Merrick Road, Lindenhurst, NY

Monthly Fire Safety Inspection Items			
Item	Description	Result	
1	Exit signs internally or externally illuminated	Yes	No
2	Smoke alarms tested and functioning	Yes	No
3	Water leaks/water damage observed inside building	Yes	No
4	Fire extinguishers within expiration or inspected annually	Yes	No
5	All fire extinguishers present	Yes	No
6	Electrical Breaker Panel Issues	Yes	No
7	Covers present on all junction boxes, electrical switches, and outlets	Yes	No
8	Any evidence of pests present inside building (rodents, insects, etc.)	Yes	No
9	Emergency lighting tested and functioning	Yes	No

Periodic System Testing and Inspection				
Item	Description	Frequency	Date Last Performed	Date Due
10	Sprinkler system testing	Annual		
11	Battery powered emergency lighting tested	Annual		
12	Fire Extinguishers annual inspection	Annual		
13	Emergency Lighting Testing	Monthly	9/28/21	

Inspected By: Dave Adam

Inspection Date: 9/28/21

Other Items Noted:

Installed one smoke alarm in building

HRP Associates, Inc.

197 Scott Swamp Rd.

Farmington, CT 06032

(860) 674-9570

Monitor Well Data Sheet

Page 1 of 1

Well ID: MW-2s

Site Background Information

Site Location:	63 West Merrick Rd, Lindenhurst, NY	Sampling Dates:	7/27-28/21
Job Number:	DEC1004.OM	Field Team Leader:	—
Weather:	Sunny, 72°F	Team Personnel:	CJL

Ground Water Elevation Data

Date	Time	Sampler Name	Equipment Model	Depth to Water (ft)		Depth to Bottom (ft)	
7-27-21	1:44	CJL	Solinst-101 corr. factor 0	uncorrected	—	uncorrected	—
				corrected	5.14	corrected	18.50

Measurement Point: 2" pvc, HW

DTB - after sampling = N/M

Well Condition (circle one)

General Condition <u>Good</u>	Visible Well ID <u>yes</u>	Well Cap Present <u>yes</u>	Well Plumbness <u>Good</u>	Lock <u>yes</u>
Concrete Collar <u>Good</u>	Ponded Water <u>No</u>	Comments: <u>Bolt holes stripped</u>		

Well Purging Data

Date	Time						Sampler Initials	Instrument Calibration Date
	Equipment Set-up		Purging		Sample Collection			
	Start	Finish	Start	Finish	Start	Finish		
7-28-21	9:21	9:28	9:28	10:07	10:07	10:08	CJL	7-28-21

Instrument Mfg & Model

pH	YSI - Quatro Pro Plus YSI 600XL-M-YSI-556 - Serial # 15H100358
Temp.	
Sp. Cond.	
ORP	
DO	
Turbidity	HF Scientific DRT-15CE - Serial # HRP-7

Initial Water Depth (ft):			5.17	Time:		9:27		
Time	Water Depth (ft)	Flow Rate (ml/min)	pH (s.u.)	Temp (°C)	Sp Con (uS)	ORP (mV)	DO (mg/l)	Turbidity (ntu)
9:31	5.18	120	6.19	18.6	309	59.9	0.43	1.14
9:36	5.18		5.92	18.1	338	62.4	0.32	0.41
9:41	5.18		5.91	17.7	354	61.2	0.26	0.32
9:46	5.18		5.88	17.7	375	61.0	0.21	0.29
9:51	5.18		5.89	17.6	387	60.4	0.22	0.27
9:56	5.18		5.91	17.6	402	59.7	0.19	0.23
10:01	5.18	↓	5.94	17.5	403	58.6	0.20	0.21
10:06	5.18		5.96	17.5	404	57.5	0.17	0.25
Req. Limits for Last 3 Readings			+/- 0.1	3%	3%	+/- 10 mv	10% > 0.5	10% > 5

Pump Mfg & Model	Color	Odor	Purge Vol (ml)	Sample Depth (ft.)
peristaltic pump	Clear	—	4680	13.50

Sample Containers

Type & No.	Volume	Preservative	Type & No.	Volume	Preservative
3 vials	3 x 40mL	HCl			

HRP Associates, Inc.

197 Scott Swamp Rd.

Farmington, CT 06032

(860) 674-9570

Monitor Well Data Sheet

Page 1 of 2

Well ID: MW-4d

Site Background Information

Site Location:	63 West Merrick Rd, Lindenhurst, NY	Sampling Dates:	7/27 - 7/28/21
Job Number:	DEC1004.OM	Field Team Leader:	
Weather:	M. Sunny 8PF	Team Personnel:	CJC, D.J.B., K.G.

Ground Water Elevation Data

Date	Time	Sampler Name	Equipment Model	Depth to Water (ft)	Depth to Bottom (ft)
7/27/21	1:19	CJC	Solinst-101	uncorrected	uncorrected
			corr. factor 0	corrected 6.06	corrected 67.41

Measurement Point: 4" pvc HW

DTB - after sampling = NM

Well Condition (circle one)

General Condition	Visible Well ID	Well Cap Present	Well Plumbness	Lock
Good	No	Yes	Good	No
Concrete Collar	Ponded Water	Comments: No Bolts, 1 bolt tab broken		
Good	No			

Well Purging Data

Date	Equipment Set-up		Time Purging		Sample Collection		Sampler Initials	Instrument Calibration Date
	Start	Finish	Start	Finish	Start	Finish		
7/28/21	2:55	2:58	2:58	4:11	4:11	4:12	K.B.	7/27/21

Instrument Mfg & Model

pH	YSI 600XL-M / YSI 556 - Serial # 04286613
Temp.	
Sp. Cond.	
ORP	
DO	
Turbidity	HF Scientific DRT-15CE - Serial # HMY

Initial Water Depth (ft):			Time: 2:55					
Time	Water Depth (ft)	Flow Rate (ml/min)	pH (s.u.)	Temp (°C)	Sp Con (uS)	ORP (mV)	DO (mg/l)	Turbidity (ntu)
3:00	6.08	130	6.18	16.47	303	-34.6	2.10	36.1
3:05	6.09		5.71	15.65	296	-94.1	0.76	25.7
3:10	6.09		5.81	15.58	294	-122.9	0.57	20.2
3:15	6.09		5.97	15.56	291	-143.5	0.41	19.62
3:20	6.09		6.02	15.59	287	-157.5	0.38	19.38
3:25	6.09		6.07	15.39	288	-162.0	0.34	22.7
3:30	6.09		6.12	15.41	285	-170.6	0.31	19.37
3:35	6.09		6.17	15.34	282	-180.0	0.29	19.81
3:40	6.09		6.22	15.34	278	-187.3	0.27	19.70
Req. Limits for Last 3 Readings			+/- 0.1	3%	3%	+/- 10 mv	10% > 0.5	10% > 5

Pump Mfg & Model	Color	Odor	Purge Vol (ml)	Sample Depth (ft.)
peristaltic pump	clear	decay	9490	62.41

Sample Containers

Type & No.	Volume	Preservative	Type & No.	Volume	Preservative
3 vials	3 x 40mL	HCl			

HRP Associates, Inc.

197 Scott Swamp Rd.

Farmington, CT 06032

(860) 674-9570

Monitor Well Data Sheet

Page 1 of 1

Well ID: MW-5s

Site Background Information

Site Location:	63 West Merrick Rd, Lindenhurst, NY	Sampling Dates:	7-28-21
Job Number:	DEC1004.OM	Field Team Leader:	
Weather:	partly cloudy 81	Team Personnel:	KG, WJ, DTA

Ground Water Elevation Data

Date	Time	Sampler Name	Equipment Model	Depth to Water (ft)	Depth to Bottom (ft)
7/28/21	1:29	WJ	Solinst-101	uncorrected	uncorrected
			corr. factor 0	corrected 5.95	corrected 23.58

Measurement Point: 2" pvc HW

DTB - after sampling = N.M.

Well Condition (circle one)

General Condition	Visible Well ID	Well Cap Present	Well Plumbness	Lock
good	no yes	good	good	yes
Concrete Collar	Ponded Water	Comments: missing 2 bolts		
good	no			

Well Purging Data

Date	Equipment Set-up		Time Purging		Sample Collection		Sampler Initials	Instrument Calibration Date
	Start	Finish	Start	Finish	Start	Finish		
7/28/21	2:45	3:12	3:12	3:40	3:40	3:42	WJ	7/29/21

Instrument Mfg & Model

pH	YSI 600XL-M / YSI 556 - Serial # 18607
Temp.	
Sp. Cond.	
ORP	
DO	
Turbidity	HF Scientific DRT-15CE - Serial # HRP #1

Initial Water Depth (ft):			5.95	Time:		3:10		
Time	Water Depth (ft)	Flow Rate (ml/min)	pH (s.u.)	Temp (°C)	Sp Con (uS)	ORP (mV)	DO (mg/l)	Turbidity (ntu)
3:15	5.98	120	6.25	20.28	312	174.4	1.39	0.66
3:20	5.98	120	6.10	19.55	306	171.1	1.89	0.41
3:25	5.98	120	6.06	18.90	306	162.8	0.73	0.38
3:30	5.98	✓	6.05	18.89	305	163.8	0.41	0.19
3:35	5.98	✓	6.03	18.83	304	166.3	0.33	0.49
3:40	5.98	✓	6.01	18.81	303	157.2	0.29	0.46

Req. Limits for Last 3 Readings	+/- 0.1	3%	3%	+/- 10 mv	10% > 0.5	10% > 5
---------------------------------	---------	----	----	-----------	-----------	---------

Pump Mfg & Model	Color	Odor	Purge Vol (ml)	Sample Depth (ft.)
peristaltic pump	clear	✓	3360	18.58

Sample Containers

Type & No.	Volume	Preservative	Type & No.	Volume	Preservative
3 vials	3 x 40mL	HCl			

HRP Associates, Inc.

197 Scott Swamp Rd.

Farmington, CT 06032

(860) 674-9570

Monitor Well Data Sheet

 Page 1 of 1

Well ID: MW-101

Site Background Information

Site Location:	63 West Merrick Rd, Lindenhurst, NY	Sampling Dates:	7/27-28/21
Job Number:	DEC1004.OM	Field Team Leader:	
Weather:	M. Sunny, 79°F	Team Personnel:	CJL

Ground Water Elevation Data

Date	Time	Sampler Name	Equipment Model	Depth to Water (ft)	Depth to Bottom (ft)
7-27-21	1:33	CJL	Solinst-101	uncorrected	uncorrected
			corr. factor 0	6.46	14.53

Measurement Point: 2" pvc, HW

DTB - after sampling = 14.56

Well Condition (circle one)

General Condition	Visible Well ID	Well Cap Present	Well Plumbness	Lock
Good	yes	yes	Good	yes
Concrete Collar	Ponded Water	Comments:		
Good	No			

Well Purging Data

Date	Time						Sampler Initials	Instrument Calibration Date
	Equipment Set-up		Purging		Sample Collection			
	Start	Finish	Start	Finish	Start	Finish		
7-28-21	12:08	12:22	12:22	1:01	1:01	1:02	CJL	7-28-21

Instrument Mfg & Model

pH	YSI - Quatro - Pro Plus YSI 600XL-M / YSI 556 - Serial # 75H100358
Temp.	
Sp. Cond.	
ORP	
DO	
Turbidity	HF Scientific DRT-15CE - Serial # HRP-7

Initial Water Depth (ft):		6.48	Time:		12:21			
Time	Water Depth (ft)	Flow Rate (ml/min)	pH (s.u.)	Temp (°C)	Sp Con (uS)	ORP (mV)	DO (mg/l)	Turbidity (ntu)
12:25	6.49	120	7.02	19.9	515	-19.7	0.40	2.33
12:30	6.50		6.96	19.9	523	-30.0	0.20	1.75
12:35	6.50		7.12	20.0	535	-45.7	0.17	2.55
12:40	6.50		7.21	20.2	539	-58.2	0.17	1.59
12:45	6.50		7.27	19.9	538	-70.0	0.18	1.77
12:50	6.50		7.31	19.9	531	-79.6	0.21	1.83
12:55	6.50	✓	7.31	20.0	525	-85.1	0.22	1.01
1:00	6.50	✓	7.32	20.1	524	-89.3	0.23	1.14

Req. Limits for Last 3 Readings	+/- 0.1	3%	3%	+/- 10 mv	10% > 0.5	10% > 5
---------------------------------	---------	----	----	-----------	-----------	---------

Pump Mfg & Model	Color	Odor	Purge Vol (ml)	Sample Depth (ft.)
peristaltic pump	Clear	—	4680	10.50

Sample Containers

Type & No.	Volume	Preservative	Type & No.	Volume	Preservative
3 vials	3 x 40mL	HCl			

HRP Associates, Inc.

197 Scott Swamp Rd.

Farmington, CT 06032

(860) 674-9570

Monitor Well Data Sheet

 Page 1 of 1

Well ID: MW-102

Site Background Information

Site Location:	63 West Merrick Rd, Lindenhurst, NY	Sampling Dates:	7/27-28/21
Job Number:	DEC1004.OM	Field Team Leader:	
Weather:	M. Sunny, 81°F	Team Personnel:	CJL

Ground Water Elevation Data

Date	Time	Sampler Name	Equipment Model	Depth to Water (ft)	Depth to Bottom (ft)
7-27-21	1:32	CJL	Solinst-101	uncorrected —	uncorrected —
			corr. factor 0	corrected 6.29	corrected 14.10

Measurement Point: 2" pvc, HW DTB - after sampling = 14.31

Well Condition (circle one)

General Condition	Visible Well ID	Well Cap Present	Well Plumbness	Lock
Fair	yes	yes	Good	yes
Concrete Collar	Ponded Water	Comments:		
Good	No	One Bolt hole tab broken		

Well Purging Data

Date	Time						Sampler Initials	Instrument Calibration Date
	Equipment Set-up		Purging		Sample Collection			
	Start	Finish	Start	Finish	Start	Finish		
7-28-21	2:00	2:08	2:08	2:47	2:47	2:48	CJL	7-28-21

Instrument Mfg & Model

pH	YSI - Quattro-Pro Plus YSI 600XL-MT YSI 556 - Serial # 154100358
Temp.	
Sp. Cond.	
ORP	
DO	
Turbidity	HF Scientific DRT-15CE - Serial # HRP-7

Initial Water Depth (ft): 6.31			Time: 2:07					
Time	Water Depth (ft)	Flow Rate (ml/min)	pH (s.u.)	Temp (°C)	Sp Con (uS)	ORP (mV)	DO (mg/l)	Turbidity (ntu)
2:11	6.31	120	6.29	21.5	696	55.2	1.56	0.53
2:16	6.31	1	6.75	21.2	712	15.0	1.34	0.66
2:21	6.31	1	6.84	21.1	717	-2.7	1.46	0.52
2:26	6.31	1	6.88	21.1	708	-10.4	1.45	0.21
2:31	6.31	1	6.80	21.0	699	-12.7	1.47	0.34
2:36	6.31	1	6.72	21.1	695	-12.4	1.53	0.31
2:41	6.31	↓	6.69	20.9	685	-12.1	1.48	0.24
2:46	6.31	✓	6.71	21.0	676	-13.3	1.44	0.21

Req. Limits for Last 3 Readings +/- 0.1 3% 3% +/- 10 mv 10% > 0.5 10% > 5

Pump Mfg & Model	Color	Odor	Purge Vol (ml)	Sample Depth (ft.)
peristaltic pump	clear	—	4680	10.20

Sample Containers

Type & No.	Volume	Preservative	Type & No.	Volume	Preservative
3 vials	3 x 40mL	HCl			

HRP Associates, Inc.

197 Scott Swamp Rd.

Farmington, CT 06032

(860) 674-9570

Monitor Well Data Sheet

Page 1 of 1

Well ID: MW-103

Site Background Information

Site Location:

63 West Merrick Rd, Lindenhurst, NY

Job Number:

DEC1004.OM

Weather:

M. Sunny, 81°F

Sampling Dates:

7/27-28/21

Field Team Leader:

Team Personnel:

CJL, KG, DJA

Ground Water Elevation Data

Date	Time	Sampler Name	Equipment Model	Depth to Water (ft)		Depth to Bottom (ft)	
7-27-21	1:35	CJL	Solinst-101	uncorrected	—	uncorrected	—
			corr. factor 0	corrected	6.23	corrected	12.77

Measurement Point:

2" pvc, HW

DTB - after sampling = 12.76

Well Condition (circle one)

General Condition	Visible Well ID	Well Cap Present	Well Plumbness	Lock
Good	Yes	Yes	Good	Yes
Concrete Collar	Ponded Water	Comments:		
Good	No			

Well Purging Data

Date	Equipment Set-up		Time Purging		Sample Collection		Sampler Initials	Instrument Calibration Date
	Start	Finish	Start	Finish	Start	Finish		
7-28-21	2:52	3:07	3:07	3:51	3:51	3:52	CJL	7-28-21

Instrument Mfg & Model

pH	YSI - Quatro-Pro Plus YSI 600XL-M / YSI-556 - Serial # 15H100358
Temp.	
Sp. Cond.	
ORP	
DO	
Turbidity	HF Scientific DRT-15CE - Serial # HRP-7

Initial Water Depth (ft):			6.24	Time:		3:06			
Time	Water Depth (ft)	Flow Rate (ml/min)	pH (s.u.)	Temp (°C)	Sp Con (uS)	ORP (mV)	DO (mg/l)	Turbidity (ntu)	
3:10	6.25	120	5.83	21.3	520	34.4	0.23	2.42	
3:15	6.26		5.92	21.5	465	27.4	0.54	1.49	
3:20	6.26		5.79	21.5	438	37.4	1.10	1.26	
3:25	6.26		5.47	21.7	407	56.0	1.30	1.32	
3:30	6.26		5.10	21.7	388	80.6	1.62	0.71	
3:35	6.26		4.99	21.7	388	89.6	1.66	0.62	
3:40	6.26		4.89	21.6	389	96.9	1.63	0.41	
3:45	6.26		4.85	21.7	390	102.1	1.69	0.45	
3:50	6.26		4.83	21.7	391	105.7	1.72	0.46	
Req. Limits for Last 3 Readings			+/- 0.1	3%	3%	+/- 10 mv	10% > 0.5	10% > 5	

Pump Mfg & Model	Color	Odor	Purge Vol (ml)	Sample Depth (ft.)
peristaltic pump	Clear	—	5280	9.50

Sample Containers

Type & No.	Volume	Preservative	Type & No.	Volume	Preservative
3 vials	3 x 40mL	HCl			

HRP Associates, Inc.

197 Scott Swamp Rd.

Farmington, CT 06032

(860) 674-9570

Monitor Well Data Sheet

 Page 1 of 2

Well ID: MW-104

Site Background Information

Site Location:

63 West Merrick Rd, Lindenhurst, NY

Job Number:

DEC1004.OM

Weather:

partly cloudy 81

Sampling Dates:

7-29-21 + 7-28-21

Field Team Leader:

Team Personnel:

KG, CSZ, DSA

Ground Water Elevation Data

Date	Time	Sampler Name	Equipment Model	Depth to Water (ft)	Depth to Bottom (ft)
7/27/21	1:27	AK	Solinst-101	uncorrected	uncorrected
			corr. factor 0	corrected 6.24	corrected 14.45

Measurement Point: 2" pvc HW

DTB - after sampling = NM

Well Condition (circle one)

General Condition	Visible Well ID	Well Cap Present	Well Plumbness	Lock
good	yes	yes	good	yes
Concrete Collar	Ponded Water	Comments: Missing bolt		
good	no			

Well Purging Data

Date	Time						Sampler Initials	Instrument Calibration Date
	Equipment Set-up		Purging		Sample Collection			
	Start	Finish	Start	Finish	Start	Finish		
7/27/21	3:43p	3:54	3:54	4:50	4:50	5:52	DTA	7/27/21

Instrument Mfg & Model

pH	YSI 600XL-M / YSI 556 - Serial # 18K07
Temp.	
Sp. Cond.	
ORP	
DO	
Turbidity	IIF Scientific DRT-15CE - Serial # HRP111

Initial Water Depth (ft): 6.24			Time: 3:52					
Time	Water Depth (ft)	Flow Rate (ml/min)	pH (s.u.)	Temp (°C)	Sp Con (uS)	ORP (mV)	DO (mg/l)	Turbidity (ntu)
4:00	6.28	140	6.83	20.23	332	193.2	1.69	2.85
4:05	6.24		6.85	20.09	308	188.6	1.39	3.97
4:10	6.25		6.99	20.12	268	-29.9	0.60	4.11
4:15	6.25		6.88	20.20	243	-54.4	1.73	3.06
4:20	6.25		6.86	20.22	233	-6.7	2.12	1.90
4:25	6.25		6.86	20.23	230	92.9	2.39	1.19
4:30	6.25		6.87	20.25	231	66.9	2.58	1.26
4:35	6.25		6.89	20.27	232	84.5	2.79	0.89
4:40	6.25		6.90	20.30	232	90.3	2.88	0.62
Req. Limits for Last 3 Readings			+/- 0.1	3%	3%	+/- 10 mv	10% > 0.5	10% > 5

Pump Mfg & Model	Color	Odor	Purge Vol (ml)	Sample Depth (ft.)
peristaltic pump	clear		7840	10.34

Sample Containers

Type & No.	Volume	Preservative	Type & No.	Volume	Preservative
3 vials	3 x 40mL	HCl			

(860) 674-9570

Page 2 of 2

nov-104

Team Personnel: AAA, CCL, IR

[illegible]

HRP Associates, Inc.

197 Scott Swamp Rd.

Farmington, CT 06032

(860) 674-9570

Monitor Well Data Sheet

 Page 1 of 1

Well ID: MW-105

Site Background Information

Site Location:	63 West Merrick Rd, Lindenhurst, NY	Sampling Dates:	7/27-28/21
Job Number:	DEC1004.OM	Field Team Leader:	
Weather:	Sunny, 84°F	Team Personnel:	CJL

Ground Water Elevation Data

Date	Time	Sampler Name	Equipment Model	Depth to Water (ft)		Depth to Bottom (ft)	
7-27-21	1:37	CJL	Solinst-101 corr. factor 0	uncorrected	—	uncorrected	—
				corrected	6.31	corrected	14.30

Measurement Point: 2" pvc, HW

DTB - after sampling = 14.34

Well Condition (circle one)

General Condition	Visible Well ID	Well Cap Present	Well Plumbness	Lock
Good	yes	yes	Good	yes
Concrete Collar	Ponded Water	Comments:		
Good	No	(Dupe = MW-B)		

Well Purging Data

Date	Equipment Set-up		Time Purging		Sample Collection		Sampler Initials	Instrument Calibration Date
	Start	Finish	Start	Finish	Start	Finish		
7-27-21	4:21	4:31	4:31	5:15	5:15	5:18	CJL	7-26-21

Instrument Mfg & Model

pH	YSI - Quatro-ProPlus YSI 600XL-M / YSI 556 - Serial # 15H100358
Temp.	
Sp. Cond.	
ORP	
DO	
Turbidity	HF Scientific DRT-15CE - Serial # HRP-7

Initial Water Depth (ft):			6.30	Time:		4:30			
Time	Water Depth (ft)	Flow Rate (ml/min)	pH (s.u.)	Temp (°C)	Sp Con (uS)	ORP (mV)	DO (mg/l)	Turbidity (ntu)	
4:34	6.30	120	7.16	20.5	827	13.7	5.35	2.37	
4:39	6.30		6.95	20.4	561	21.7	4.58	0.93	
4:44	6.30		6.88	20.4	474	23.6	3.85	0.65	
4:49	6.30		6.87	20.4	470	21.8	3.58	0.72	
4:54	6.30		6.84	20.3	484	18.5	2.83	0.81	
4:59	6.30		6.83	20.2	497	16.5	2.49	0.85	
5:04	6.30		6.82	20.1	510	15.0	2.40	0.77	
5:09	6.30		6.82	20.1	517	14.1	2.29	0.70	
5:14	6.30		6.81		523	13.6	2.20	0.63	
Req. Limits for Last 3 Readings			+/- 0.1	3%	3%	+/- 10 mv	10% > 0.5	10% > 5	

Pump Mfg & Model	Color	Odor	Purge Vol (ml)	Sample Depth (ft.)
peristaltic pump	clear	—	5280	10.30

Sample Containers

Type & No.	Volume	Preservative	Type & No.	Volume	Preservative
3 vials	3 x 40mL	HCl			

HRP Associates, Inc.

197 Scott Swamp Rd.

Farmington, CT 06032

(860) 674-9570

Monitor Well Data Sheet

 Page 1 of 1

Well ID: MW-106

Site Background Information

Site Location:	63 West Merrick Rd, Lindenhurst, NY	Sampling Dates:	7/27-28/21
Job Number:	DEC1004.OM	Field Team Leader:	
Weather:	M. Sunny, 75°F	Team Personnel:	CJL

Ground Water Elevation Data

Date	Time	Sampler Name	Equipment Model	Depth to Water (ft)		Depth to Bottom (ft)	
7-27-21	1:15	CJL	Solinst-101	uncorrected	—	uncorrected	—
			corr. factor 0	corrected	6.25	corrected	13.68

Measurement Point: 2" pvc, HW

DTB - after sampling = 13.68

Well Condition (circle one)

General Condition	Visible Well ID	Well Cap Present	Well Plumbness	Lock
Fair	yes	yes	Good	yes
Concrete Collar	Ponded Water	Comments:		
Good	No	(1) Bolt hole tab broken, other BHS - Stripped Bolt Hole		

Well Purging Data

Date	Time						Sampler Initials	Instrument Calibration Date
	Equipment Set-up		Purging		Sample Collection			
	Start	Finish	Start	Finish	Start	Finish		
7-28-21	10:27	10:35	10:35	11:14	11:14	11:16	CJL	7-28-21

Instrument Mfg & Model

pH	YSI-Quattro-Pro Plus YSI 600XL-M + YSI-556 - Serial # 15H100358
Temp.	
Sp. Cond.	
ORP	
DO	
Turbidity	IIF Scientific DRT-15CE - Serial # HRP-7

Initial Water Depth (ft): 6.26			Time: 10:34					
Time	Water Depth (ft)	Flow Rate (ml/min)	pH (s.u.)	Temp (°C)	Sp Con (uS)	ORP (mV)	DO (mg/l)	Turbidity (ntu)
10:38	6.27	120	6.49	16.8	301	-89.1	0.26	4.01
10:43	6.27		6.56	16.9	297	-124.1	0.21	3.52
10:48	6.28		6.58	17.2	292	-137.0	0.22	2.91
10:53	6.28		6.62	17.1	282	-144.4	0.29	2.94
10:58	6.28		6.64	17.0	279	-147.2	0.30	2.74
11:03	6.28		6.66	16.7	266	-147.9	0.20	2.55
11:08	6.28		6.67	16.8	263	-147.1	0.19	2.51
11:13	6.28	↓	6.69	16.9	263	-147.3	0.22	2.17

Req. Limits for Last 3 Readings	+/- 0.1	3%	3%	+/- 10 mv	10% > 0.5	10% > 5
---------------------------------	---------	----	----	-----------	-----------	---------

Pump Mfg & Model	Color	Odor	Purge Vol (ml)	Sample Depth (ft.)
peristaltic pump	clear	—	4680	9.96

Sample Containers

Type & No.	Volume	Preservative	Type & No.	Volume	Preservative
3 vials	3 x 40mL	HCl			

HRP Associates, Inc.

197 Scott Swamp Rd.

Farmington, CT 06032

(860) 674-9570

Monitor Well Data Sheet

Well ID: MW-107

Page 1 of 1

Site Background Information

Site Location:	63 West Merrick Rd, Lindenhurst, NY	Sampling Dates:	7/27-28/21
Job Number:	DEC1004.OM	Field Team Leader:	
Weather:	M. Sunny, 79°F	Team Personnel:	CJL

Ground Water Elevation Data

Date	Time	Sampler Name	Equipment Model	Depth to Water (ft)	Depth to Bottom (ft)
7-27-21	1:17	CJL	Solinst-101 corr. factor 0	uncorrected — corrected 6.21	uncorrected — corrected 14.35

Measurement Point: 2" pvc, H4)

DTB - after sampling = 14.60

Well Condition (circle one)

General Condition	Visible Well ID	Well Cap Present	Well Plumbness	Lock
Good	yes	yes	Good	yes
Concrete Collar	Ponded Water	Comments:		
Good	No			

Well Purging Data

Date	Time						Sampler Initials	Instrument Calibration Date
	Equipment Set-up		Purging		Sample Collection			
	Start	Finish	Start	Finish	Start	Finish		
7-28-21	11:19	11:28	11:28	12:02	12:02	12:03	CJL	7-28-21

Instrument Mfg & Model

pH	YSI - Quatro - ProPlus YSI 600XL-M / YSI-556 - Serial # 15H100358
Temp.	
Sp. Cond.	
ORP	
DO	
Turbidity	HF Scientific DRT-15CE - Serial # HRP-7

Initial Water Depth (ft): 6.25			Time: 11:27					
Time	Water Depth (ft)	Flow Rate (ml/min)	pH (s.u.)	Temp (°C)	Sp Con (uS)	ORP (mV)	DO (mg/l)	Turbidity (ntu)
11:31	6.25	120	6.87	19.0	490	-51.9	0.77	5.57
11:36	6.26		6.82	18.7	476	-75.3	0.38	6.74
11:41	6.26		6.83	18.6	465	-96.3	0.47	7.51
11:46	6.26		6.83	18.5	464	-103.5	0.49	4.73
11:51	6.26		6.84	18.4	467	-112.0	0.48	4.31
11:56	6.26	✓	6.84	18.5	466	-115.7	0.46	3.89
12:01	6.26	✓	6.85	18.4	469	-118.0	0.44	2.50
Req. Limits for Last 3 Readings			+/- 0.1	3%	3%	+/- 10 mv	10% > 0.5	10% > 5

Pump Mfg & Model	Color	Odor	Purge Vol (ml)	Sample Depth (ft.)
peristaltic pump	Clear	—	4080	10.30

Sample Containers

Type & No.	Volume	Preservative	Type & No.	Volume	Preservative
3 vials	3 x 40mL	HCl			

HRP Associates, Inc.

197 Scott Swamp Rd.

Farmington, CT 06032

(860) 674-9570

Monitor Well Data Sheet

Well ID: Mw-108

Page 1 of 1

Site Background Information

Site Location:	63 West Merrick Rd, Lindenhurst, NY	Sampling Dates:	7/27-28/21
Job Number:	DEC1004.OM	Field Team Leader:	
Weather:	M. Cloudy, 81°F	Team Personnel:	CJL, KG, DJA

Ground Water Elevation Data

Date	Time	Sampler Name	Equipment Model	Depth to Water (ft)	Depth to Bottom (ft)
7-27-21	1:23	CJL	Solinst-101 corr. factor 0	uncorrected — corrected 6.61	uncorrected — corrected 14.38

Measurement Point: 2" pvc, HW

DTB - after sampling = 14.42

Well Condition (circle one)

General Condition	Visible Well ID	Well Cap Present	Well Plumbness	Lock
Fair	yes	yes	Good	yes
Concrete Collar	Ponded Water	Comments:		
Good	No	1-Bolt hole tab broken, no bolts		

Well Purging Data

Date	Time						Sampler Initials	Instrument Calibration Date
	Equipment Set-up		Purging		Sample Collection			
	Start	Finish	Start	Finish	Start	Finish		
7-28-21	3:58	4:12	4:12	4:41	4:41	4:42	CJL	7-28-21

Instrument Mfg & Model

pH	YSI-Quatro-ProPlus - YSI 600XL-M+YSI-556- Serial # 15H100358
Temp.	
Sp. Cond.	
ORP	
DO	
Turbidity	HF Scientific DRT-15CE - Serial # HRP-7

Initial Water Depth (ft): 6.63			Time: 4:11					
Time	Water Depth (ft)	Flow Rate (ml/min)	pH (s.u.)	Temp (°C)	Sp Con (uS)	ORP (mV)	DO (mg/l)	Turbidity (ntu)
4:15	6.65	120	6.39	16.2	470	44.9	0.57	1.75
4:20	6.65	1	6.34	16.1	473	42.1	0.43	0.67
4:25	6.65	1	6.39	16.0	475	37.3	0.44	0.56
4:30	6.65	1	6.42	16.0	474	34.3	0.64	0.47
4:35	6.65	↓	6.44	16.0	472	33.1	0.68	0.36
4:40	6.65	↓	6.45	16.0	472	32.5	0.67	0.39

Req. Limits for Last 3 Readings	+/- 0.1	3%	3%	+/- 10 mv	10% > 0.5	10% > 5
---------------------------------	---------	----	----	-----------	-----------	---------

Pump Mfg & Model	Color	Odor	Purge Vol (ml)	Sample Depth (ft.)
peristaltic pump	Clear	—	3480	10.50

Sample Containers

Type & No.	Volume	Preservative	Type & No.	Volume	Preservative
3 vials	3 x 40mL	HCl			

HRP Associates, Inc.

197 Scott Swamp Rd.

Farmington, CT 06032

(860) 674-9570

Monitor Well Data Sheet

 Page 1 of 1

Well ID: Mw-109

Site Background Information

Site Location:

63 West Merrick Rd, Lindenhurst, NY

Job Number:

DEC1004.OM

Weather:

Sunny, 86°F

Sampling Dates:

7/27-8/21

Field Team Leader:

Team Personnel:

CJL

Ground Water Elevation Data

Date	Time	Sampler Name	Equipment Model	Depth to Water (ft)		Depth to Bottom (ft)	
7-27-21	1:56	CJL	Solinst-101 corr. factor 0	uncorrected	—	uncorrected	—
				corrected	6.25	corrected	34.25

Measurement Point: 2" pvc, HW

DTB - after sampling = 34.50

Well Condition (circle one)

General Condition	Visible Well ID	Well Cap Present	Well Plumbness	Lock
Good	yes	yes	Good	yes
Concrete Collar	Ponded Water	Comments:		
Good	No			

Well Purging Data

Date	Time						Sampler Initials	Instrument Calibration Date
	Equipment Set-up		Purging		Sample Collection			
	Start	Finish	Start	Finish	Start	Finish		
7-27-21	3:32	3:39	3:39	4:08	4:08	4:09	CJL	7-26-21

Instrument Mfg & Model

pH	YSI-Quatro ProPlus YSI 600XL-MT YSI-556 - Serial # 154100358
Temp.	
Sp. Cond.	
ORP	
DO	
Turbidity	HF Scientific DRT-15CE - Serial # HRP-7

Initial Water Depth (ft):			Time:					
Time	Water Depth (ft)	Flow Rate (ml/min)	pH (s.u.)	Temp (°C)	Sp Con (uS)	ORP (mV)	DO (mg/l)	Turbidity (ntu)
3:42	0.45	140	6.57	19.9	32,904	6.9	0.27	1.27
3:47	0.45		6.40	21.2	33,702	-1.7	0.48	1.10
3:52	0.47		6.35	20.1	33,981	-6.4	0.22	0.59
3:57	0.48		6.36	19.6	33,927	-8.3	0.32	0.31
4:02	0.49		6.37	19.4	33,970	-9.1	0.35	0.65
4:07	0.50	✓	6.37	19.2	33,941	-9.9	0.36	0.71

Req. Limits for Last 3 Readings	+/- 0.1	3%	3%	+/- 10 mv	10% > 0.5	10% > 5
---------------------------------	---------	----	----	-----------	-----------	---------

Pump Mfg & Model	Color	Odor	Purge Vol (ml)	Sample Depth (ft.)
peristaltic pump	clear	—	4060	29.25

Sample Containers

Type & No.	Volume	Preservative	Type & No.	Volume	Preservative
3 vials	3 x 40mL	HCl			

HRP Associates, Inc.

197 Scott Swamp Rd.

Farmington, CT 06032

(860) 674-9570

Monitor Well Data Sheet

 Page 1 of 1

Well ID: MW-111

Site Background Information

Site Location:

63 West Merrick Rd, Lindenhurst, NY

Job Number:

DEC1004.OM

Weather:

Sunny, 72°F

Sampling Dates:

7/27 - 28/21

Field Team Leader:

Team Personnel:

CJL

Ground Water Elevation Data

Date	Time	Sampler Name	Equipment Model	Depth to Water (ft)		Depth to Bottom (ft)	
7-27-21	1:47	CJL	Solinst-101 corr. factor 0	uncorrected	—	uncorrected	—
				corrected	2.82	corrected	34.27

Measurement Point: 2" pvc, Hw

DTB - after sampling = 34.40

Well Condition (circle one)

General Condition	Visible Well ID	Well Cap Present	Well Plumbness	Lock
Good	yes	yes	Good	yes
Concrete Collar	Ponded Water	Comments: Both bolt-hole tabs broken off Hw.		
Good	No			

Well Purging Data

Date	Equipment Set-up		Time Purging		Sample Collection		Sampler Initials	Instrument Calibration Date
	Start	Finish	Start	Finish	Start	Finish		
7-28-21	8:22	8:31	8:31	9:15	9:15	9:16	CJL	7-28-21

Instrument Mfg & Model

pH	YSI - Quatro - Pro Plus YSI 600XL-M + YSI 556 - Serial # 15H100358
Temp.	
Sp. Cond.	
ORP	
DO	
Turbidity	HF Scientific DRT-15CE - Serial # HRP-7

Initial Water Depth (ft):			2.78	Time:		8:30			
Time	Water Depth (ft)	Flow Rate (ml/min)	pH (s.u.)	Temp (°C)	Sp Con (uS)	ORP (mV)	DO (mg/l)	Turbidity (ntu)	
8:34	3.00	120	6.77	21.4	411	5.5	0.59	10.3	
8:39	3.01		5.98	20.7	369	39.3	0.29	5.67	
8:44	3.01		5.95	20.8	357	43.1	0.28	4.15	
8:49	3.01		5.95	20.8	335	45.4	0.39	4.01	
8:54	2.97		5.94	20.5	291	46.0	0.34	5.42	
8:59	2.97		5.91	20.2	256	47.7	0.28	4.62	
9:04	2.97		5.90	20.2	240	49.0	0.24	4.31	
9:09	2.98		5.90	20.1	238	49.5	0.22	3.55	
9:14	2.98	✓	5.90	20.1	235	49.8	0.22	3.18	
Req. Limits for Last 3 Readings			+/- 0.1	3%	3%	+/- 10 mv	10% > 0.5	10% > 5	

Pump Mfg & Model	Color	Odor	Purge Vol (ml)	Sample Depth (ft.)
peristaltic pump	clear	—	5280	29.27

Sample Containers

Type & No.	Volume	Preservative	Type & No.	Volume	Preservative
3 vials	3 x 40mL	HCl			

HRP Associates, Inc.

197 Scott Swamp Rd.

Farmington, CT 06032

(860) 674-9570

Monitor Well Data Sheet

Page 1 of 1

Well ID: RW-1

Site Background Information

Site Location:	63 West Merrick Rd, Lindenhurst, NY	Sampling Dates:	7/27 - 7/28/21
Job Number:	DEC1004.OM	Field Team Leader:	
Weather:	M. Sunny 81°F	Team Personnel:	CSC, DIA, LKS

Ground Water Elevation Data

Date	Time	Sampler Name	Equipment Model	Depth to Water (ft)	Depth to Bottom (ft)
7/27/21	1:25	CSC	Solinst-101	uncorrected	uncorrected
			corr. factor 0	corrected 9.25	corrected 33.92

Measurement Point: 8" pvc sp DTB - after sampling = N/A

Well Condition (circle one)

General Condition	Visible Well ID	Well Cap Present	Well Plumbness	Lock
Good	No	Yes	Good	No
Concrete Collar	Ponded Water	Comments:		
N/A	No			

Well Purging Data

Date	Time						Sampler Initials	Instrument Calibration Date
	Equipment Set-up		Purging		Sample Collection			
	Start	Finish	Start	Finish	Start	Finish		
7/27/21	4:12	4:15	4:15	4:44	4:44	4:47	LCK	7/27/21

Instrument Mfg & Model

pH	YSI 600XL-M / YSI 556 - Serial # 042566AB
Temp.	
Sp. Cond.	
ORP	
DO	
Turbidity	HF Scientific DRT-15CE - Serial # HAP14

Initial Water Depth (ft): 9.25			Time: 4:42					
Time	Water Depth (ft)	Flow Rate (ml/min)	pH (s.u.)	Temp (°C)	Sp Con (uS)	ORP (mV)	DO (mg/l)	Turbidity (ntu)
4:18	9.28	160	6.41	16.09	411	-111.0	2.03	8.89
4:23	9.28		6.17	16.01	412	-100.3	0.40	4.02
4:28	9.28		6.20	15.76	411	-99.6	0.30	2.33
4:33	9.28		6.21	15.73	412	-96.9	0.27	2.91
4:38	9.28		6.23	15.82	411	-95.7	0.25	2.79
4:43	9.28		6.23	15.73	410	-93.1	0.23	3.42

Req. Limits for Last 3 Readings	+/- 0.1	3%	3%	+/- 10 mv	10% > 0.5	10% > 5
---------------------------------	---------	----	----	-----------	-----------	---------

Pump Mfg & Model	Color	Odor	Purge Vol (ml)	Sample Depth (ft.)
peristaltic pump	clear	-	4640	28.92

Sample Containers

Type & No.	Volume	Preservative	Type & No.	Volume	Preservative
3 vials	3 x 40mL	HCl			
1 plastic	250mL	HNO3			

Monitor Well Data Sheet

Page 1 of 2

Well ID: RW-2

Site Background Information

Site Location:	63 West Merrick Rd, Lindenhurst, NY	Sampling Dates:	7/27-28/21
Job Number:	DEC1004.OM	Field Team Leader:	
Weather:	Sunny, 84°F	Team Personnel:	KG, DJA, CJL

Ground Water Elevation Data

Date	Time	Sampler Name	Equipment Model	Depth to Water (ft)	Depth to Bottom (ft)
7-27-21	2:10	CJL	Solinst-101	uncorrected —	uncorrected —
			corr. factor 0	corrected 0.48	corrected 34.97

Measurement Point: -6" pvc 8" steel casing, Vault (Electric) DTB after sampling = 35.05

Well Condition (circle one)

General Condition	Visible Well ID	Well Cap Present	Well Plumbness	Lock
Fair	No	No	Good	No

Concrete Collar	Ponded Water	Comments:
N/A - in lawn	YES	Dupe = MW-A

Well Purging Data

Date	Time						Sampler Initials	Instrument Calibration Date
	Equipment Set-up		Purging		Sample Collection			
	Start	Finish	Start	Finish	Start	Finish		
7-27-21	2:10	2:21	2:21	3:19	3:19	3:23	CJL	7-26-21

Instrument Mfg & Model

pH	YSI-Quatro-ProPlus YSI 600XL-M / YSI-556 - Serial # 15H100358
Temp.	
Sp. Cond.	
ORP	
DO	
Turbidity	HF Scientific DRT-15CE - Serial # HRP-7

	Initial Water Depth (ft):	0.48	Time:	2:20				
Time	Water Depth (ft)	Flow Rate (ml/min)	pH (s.u.)	Temp (°C)	Sp Con (uS)	ORP (mV)	DO (mg/l)	Turbidity (ntu)
2:23	0.48	250	9.06	17.3	961	-129.5	0.21	9.53
2:28	0.49		9.07	17.2	962	-224.9	0.10	9.61
2:33	0.50		9.07	17.1	958	-267.8	0.06	9.73
2:38	0.51		9.08	17.3	955	-288.9	0.07	9.82
2:43	0.53		9.09	17.3	952	-315.4	0.05	9.59
2:48	0.54		9.10	17.3	947	-327.0	0.05	9.75
2:53	0.55		9.11	17.3	947	-338.9	0.04	9.65
2:58	0.56		9.11	17.3	948	-346.9	0.04	9.54
3:03	0.58		9.12	17.3	949	-354.4	0.04	9.48

Req. Limits for Last 3 Readings	+/- 0.1	3%	3%	+/- 10 mv	10% > 0.5	10% > 5
---------------------------------	---------	----	----	-----------	-----------	---------

Pump Mfg & Model	Color	Odor	Purge Vol (ml)	Sample Depth (ft.)
peristaltic pump	Golden-Brown	Organic	14,500	29.97

Sample Containers

Type & No.	Volume	Preservative	Type & No.	Volume	Preservative
3 vials	3 x 40mL	HCl			
1 plastic	250mL	HNO3			

[illegible]

HRP Associates, Inc.

197 Scott Swamp Rd.

Farmington, CT 06032

(860) 674-9570

Monitor Well Data Sheet

Page 1 of

Well ID: MW-4s

Site Background Information

Site Location:	63 West Merrick Rd, Lindenhurst, NY	Sampling Dates:	7/27 - 7/28/24
Job Number:	DEC1004.OM	Field Team Leader:	
Weather:	Sunny 72°F	Team Personnel:	CSC

Ground Water Elevation Data

Date	Time	Sampler Name	Equipment Model	Depth to Water (ft)		Depth to Bottom (ft)	
7/27/24	1:21	CSC	Solinst-101	uncorrected		uncorrected	
			corr. factor 0	corrected	6.19	corrected	

Measurement Point: 2" pvc HW

DTB - after sampling =

Well Condition (circle one)

General Condition	Visible Well ID	Well Cap Present	Well Plumbness	Lock
Concrete Collar	Ponded Water	Comments: <u>DTW Only</u>		
		<u>Missing 1 bolt</u>		

Well Purging Data

Date	Time						Sampler Initials	Instrument Calibration Date
	Equipment Set-up		Purging		Sample Collection			
	Start	Finish	Start	Finish	Start	Finish		

Instrument Mfg & Model

pH	YSI 600XL-M / YSI 556 - Serial #
Temp.	
Sp. Cond.	
ORP	
DO	
Turbidity	HF Scientific DRT-15CE - Serial #

Initial Water Depth (ft):			Time:		Sp Con (uS)	ORP (mV)	DO (mg/l)	Turbidity (ntu)
Time	Water Depth (ft)	Flow Rate (ml/min)	pH (s.u.)	Temp (°C)				
Req. Limits for Last 3 Readings			+/- 0.1	3%	3%	+/- 10 mv	10% > 0.5	10% > 5

Pump Mfg & Model	Color	Odor	Purge Vol (ml)	Sample Depth (ft.)
peristaltic pump				

Sample Containers

Type & No.	Volume	Preservative	Type & No.	Volume	Preservative
3 vials	3 x 40mL	HCl			

HRP Associates, Inc.

197 Scott Swamp Rd.

Farmington, CT 06032

(860) 674-9570

Monitor Well Data Sheet

Page 1 of 1

Well ID: MW-110

Site Background Information

Site Location:	63 West Merrick Rd, Lindenhurst, NY	Sampling Dates:	7/27 + 7/28/21
Job Number:	DEC1004.OM	Field Team Leader:	
Weather:		Team Personnel:	CJC

Ground Water Elevation Data

Date	Time	Sampler Name	Equipment Model	Depth to Water (ft)		Depth to Bottom (ft)	
			Solinst-101	uncorrected		uncorrected	
			corr. factor 0	corrected		corrected	34.39

Measurement Point: 2" pvc

DTB - after sampling =

Well Condition (circle one)

General Condition	Visible Well ID	Well Cap Present	Well Plumbness	Lock

Concrete Collar	Ponded Water	Comments:
		Unable to locate

Well Purging Data

Date	Equipment Set-up		Time Purging		Sample Collection		Sampler Initials	Instrument Calibration Date
	Start	Finish	Start	Finish	Start	Finish		

Instrument Mfg & Model

pH	YSI 600XL-M / YSI 556 - Serial #
Temp.	
Sp. Cond.	
ORP	
DO	
Turbidity	HF Scientific DRT-15CE - Serial #

Initial Water Depth (ft):			Time:					
Time	Water Depth (ft)	Flow Rate (ml/min)	pH (s.u.)	Temp (°C)	Sp Con (uS)	ORP (mV)	DO (mg/l)	Turbidity (ntu)

Req. Limits for Last 3 Readings	+/- 0.1	3%	3%	+/- 10 mv	10% > 0.5	10% > 5
---------------------------------	---------	----	----	-----------	-----------	---------

Pump Mfg & Model	Color	Odor	Purge Vol (ml)	Sample Depth (ft.)
peristaltic pump				

Sample Containers

Type & No.	Volume	Preservative	Type & No.	Volume	Preservative
3 vials	3 x 40mL	HCl			

Report No. (Site Name) - NYSDEC Site No. 152125

Date: 07/01/21



NEW YORK STATE
Department of
Environmental
Conservation
50

Report No. (Site Name) - NYSDEC Site No. 152125

Date: 07/01/21

[illegible]

Equipment/Material Tracking Comments:

DAILY INSPECTION REPORT

Report No. (Site Name) - NYSDEC Site No. 152125

Date: 07/01/21

Visitors to Site			
Name	Representing	Entered Exclusion/CRZ Zone	
		Yes	No
		Yes	No
		Yes	No
		Yes	No
		Yes	No
		Yes	No
		Yes	No
		Yes	No
		Yes	No
Site Representatives			
Name	Representing		
Project Schedule Comments			
Issues Pending			
Interaction with Public, Property Owners, Media, etc.			

DAILY INSPECTION REPORT

Page 4 of 9

Report No. (Site Name) - NYSDEC Site No. 152125

Date: 07/01/21

Include (insert) figures with markups showing location of work and job progress

DAILY INSPECTION REPORT

Page 5 of 9

Report No. (Site Name) - NYSDEC Site No. 152125

Date: 07/01/21

DAILY INSPECTION REPORT

Page 6 of 9

Report No. (Site Name) - NYSDEC Site No. 152125

Date: 07/01/21

Site Photographs (Descriptions Below)	

DAILY INSPECTION REPORT

Page 7 of 9

Report No. (Site Name) - NYSDEC Site No. 152125

Date: 07/01/21

Comments	
Site Inspector(s):	Date:

DAILY INSPECTION REPORT

Report No. (Site Name) - NYSDEC Site No. 152125

Date: 07/01/21

DAILY HEALTH CHECKLIST

Is social distancing being practiced?	Yes <input checked="" type="checkbox"/>	No <input type="checkbox"/>
Is the tail gate safety meeting held outdoors?	Yes <input checked="" type="checkbox"/>	No <input type="checkbox"/>
Are remote/call in job meetings being held in lieu of meeting in person where possible?	Yes <input checked="" type="checkbox"/>	No <input type="checkbox"/>
Were personal protective gloves, masks, and eye protection being used?	Yes <input checked="" type="checkbox"/>	No <input type="checkbox"/>
Are sanitizing wipes, wash stations or spray available?	Yes <input checked="" type="checkbox"/>	No <input type="checkbox"/>
Have any workers/visitors been excluded based on close contact with individuals diagnosed with COVID-19, have recently traveled to restricted areas or countries, or are symptomatic (fever, chills, cough/shortness of breath)?	Yes <input type="checkbox"/>	No <input checked="" type="checkbox"/>
<u>Comments:</u>		

REMEDIAL ACTIVITIES AT PROPERTIES

1. Have anyone at this location been tested and confirmed to have COVID-19?	Yes <input type="checkbox"/>	No <input checked="" type="checkbox"/>
2. Is anyone at this location isolated or quarantined for COVID-19?	Yes <input type="checkbox"/>	No <input checked="" type="checkbox"/>
3. Has anyone at this locaton had contact with anyone known to have COVID-19 in the past 14 days?	Yes <input type="checkbox"/>	No <input checked="" type="checkbox"/>
4. Does anyone at this locaton have any symptoms of a respiratory infection (e.g., cough, sore throat, fever, or shortness of breath)?	Yes <input type="checkbox"/>	No <input checked="" type="checkbox"/>
5. Does the Department and its contractors have your permission to enter the property at this time?	Yes <input checked="" type="checkbox"/>	No <input type="checkbox"/>
If Yes to <u>any</u> of 1-4 above: <ul style="list-style-type: none"> If it is <u>not</u> critical that service/entry be carried out immediately and can be postponed until the risk of COVID-19 is lower, or can be accomplished remotely/without entry, postpone or conduct service without entry. If it <u>is</u> critical that service/entry be carried out immediately, advise occupants that as a precaution and for our own protection, project personnel will be donning appropriate PPE* (including respiratory protection) - and do so prior to entry. 	Yes <input type="checkbox"/>	No <input type="checkbox"/>
<u>Comments:</u>		

DAILY INSPECTION REPORT

Report No. _____ (Site Name) - NYSDEC Site No. 152125

Date: 07/01/21

NUISANCE CHECKLIST

Were there any community complaints related to work on this date?	Yes <input type="checkbox"/>	No <input checked="" type="checkbox"/>	N/A <input type="checkbox"/>
Were there any odors detected on this date?	Yes <input type="checkbox"/>	No <input checked="" type="checkbox"/>	N/A <input type="checkbox"/>
Was noise outside specification and/or above background on this date?	Yes <input type="checkbox"/>	No <input checked="" type="checkbox"/>	N/A <input type="checkbox"/>
Were vibration readings outside specification and/or above background on this date?	Yes <input type="checkbox"/>	No <input type="checkbox"/>	N/A <input checked="" type="checkbox"/>
Any visible dust observed beyond the work perimeter on this date?	Yes <input type="checkbox"/>	No <input type="checkbox"/>	N/A <input checked="" type="checkbox"/>
Any visible contrast (turbidity) beyond engineering controls observed on this date?	Yes <input type="checkbox"/>	No <input type="checkbox"/>	N/A <input checked="" type="checkbox"/>
Was turbidity checked at the Montauk Highway outfall?	AM <input type="checkbox"/>	PM <input type="checkbox"/>	N/A <input checked="" type="checkbox"/>
Were any property owners NOT provided advance notice for work performed on this property on this date?	Yes <input type="checkbox"/>	No <input type="checkbox"/>	N/A <input checked="" type="checkbox"/>
Was the temporary fabric structure closed at the end of the day?	Yes <input type="checkbox"/>	No <input type="checkbox"/>	N/A <input checked="" type="checkbox"/>
Has Contractor failed to protect all foundations and structures adjacent to and adjoining the site which are affected by the excavations or other operations connected with performance of the Work?	Yes <input type="checkbox"/>	No <input type="checkbox"/>	N/A <input checked="" type="checkbox"/>
If yes, has Contractor been notified?	Yes <input type="checkbox"/>	No <input type="checkbox"/>	N/A <input checked="" type="checkbox"/>
<u>Comments:</u>			

DAILY INSPECTION REPORT

Page 1 of 9

Report No. (Site Name) - NYSDEC Site No. 152125

Date: 07/29/21

[illegible]

DAILY INSPECTION REPORT

Page 2 of 9

Report No. (Site Name) - NYSDEC Site No. 152125

Date: 07/29/21

[illegible][illegible]

*On-Site scale for off-site shipment, delivery ticket for material received

Equipment/Material Tracking Comments:

DAILY INSPECTION REPORT

Page 3 of 9

Report No. (Site Name) - NYSDEC Site No. 152125

Date: 07/29/21

Visitors to Site			
Name	Representing	Entered Exclusion/CRZ Zone	
		Yes	No
		Yes	No
		Yes	No
		Yes	No
		Yes	No
		Yes	No
		Yes	No
		Yes	No
		Yes	No
Site Representatives			
Name	Representing		
Project Schedule Comments			
Issues Pending			
Interaction with Public, Property Owners, Media, etc.			

DAILY INSPECTION REPORT

Page 4 of 9

Report No. (Site Name) - NYSDEC Site No. 152125

Date: 07/29/21

Include (insert) figures with markups showing location of work and job progress

DAILY INSPECTION REPORT

Page 5 of 9

Report No. (Site Name) - NYSDEC Site No. 152125

Date: 07/29/21



Department of
Environmental
Conservation



DAILY INSPECTION REPORT

Page 6 of 9

Report No. (Site Name) - NYSDEC Site No. 152125

Date: 07/29/21

Site Photographs (Descriptions Below)	

DAILY INSPECTION REPORT

Page 7 of 9

Report No. (Site Name) - NYSDEC Site No. 152125

Date: 07/29/21

Comments	
Site Inspector(s):	Date:

DAILY INSPECTION REPORT

Report No. (Site Name) - NYSDEC Site No. 152125

Date: 07/29/21

DAILY HEALTH CHECKLIST

Is social distancing being practiced?	Yes <input checked="" type="checkbox"/>	No <input type="checkbox"/>
Is the tail gate safety meeting held outdoors?	Yes <input checked="" type="checkbox"/>	No <input type="checkbox"/>
Are remote/call in job meetings being held in lieu of meeting in person where possible?	Yes <input checked="" type="checkbox"/>	No <input type="checkbox"/>
Were personal protective gloves, masks, and eye protection being used?	Yes <input checked="" type="checkbox"/>	No <input type="checkbox"/>
Are sanitizing wipes, wash stations or spray available?	Yes <input checked="" type="checkbox"/>	No <input type="checkbox"/>
Have any workers/visitors been excluded based on close contact with individuals diagnosed with COVID-19, have recently traveled to restricted areas or countries, or are symptomatic (fever, chills, cough/shortness of breath)?	Yes <input type="checkbox"/>	No <input checked="" type="checkbox"/>
<u>Comments:</u>		

REMEDIAL ACTIVITIES AT PROPERTIES

1. Have anyone at this location been tested and confirmed to have COVID-19?	Yes <input type="checkbox"/>	No <input checked="" type="checkbox"/>
2. Is anyone at this location isolated or quarantined for COVID-19?	Yes <input type="checkbox"/>	No <input checked="" type="checkbox"/>
3. Has anyone at this locaton had contact with anyone known to have COVID-19 in the past 14 days?	Yes <input type="checkbox"/>	No <input checked="" type="checkbox"/>
4. Does anyone at this locaton have any symptoms of a respiratory infection (e.g., cough, sore throat, fever, or shortness of breath)?	Yes <input type="checkbox"/>	No <input checked="" type="checkbox"/>
5. Does the Department and its contractors have your permission to enter the property at this time?	Yes <input checked="" type="checkbox"/>	No <input type="checkbox"/>
If Yes to <u>any</u> of 1-4 above: <ul style="list-style-type: none"> If it is <u>not</u> critical that service/entry be carried out immediately and can be postponed until the risk of COVID-19 is lower, or can be accomplished remotely/without entry, postpone or conduct service without entry. If it <u>is</u> critical that service/entry be carried out immediately, advise occupants that as a precaution and for our own protection, project personnel will be donning appropriate PPE* (including respiratory protection) - and do so prior to entry. 	Yes <input type="checkbox"/>	No <input type="checkbox"/>
<u>Comments:</u>		

DAILY INSPECTION REPORT

Report No. (Site Name) - NYSDEC Site No. 152125

Date: 07/29/21

NUISANCE CHECKLIST

Were there any community complaints related to work on this date?	Yes <input type="checkbox"/>	No <input checked="" type="checkbox"/>	N/A <input type="checkbox"/>
Were there any odors detected on this date?	Yes <input type="checkbox"/>	No <input checked="" type="checkbox"/>	N/A <input type="checkbox"/>
Was noise outside specification and/or above background on this date?	Yes <input type="checkbox"/>	No <input checked="" type="checkbox"/>	N/A <input type="checkbox"/>
Were vibration readings outside specification and/or above background on this date?	Yes <input type="checkbox"/>	No <input type="checkbox"/>	N/A <input checked="" type="checkbox"/>
Any visible dust observed beyond the work perimeter on this date?	Yes <input type="checkbox"/>	No <input type="checkbox"/>	N/A <input checked="" type="checkbox"/>
Any visible contrast (turbidity) beyond engineering controls observed on this date?	Yes <input type="checkbox"/>	No <input type="checkbox"/>	N/A <input checked="" type="checkbox"/>
Was turbidity checked at the Montauk Highway outfall?	AM <input type="checkbox"/>	PM <input type="checkbox"/>	N/A <input checked="" type="checkbox"/>
Were any property owners NOT provided advance notice for work performed on this property on this date?	Yes <input type="checkbox"/>	No <input type="checkbox"/>	N/A <input checked="" type="checkbox"/>
Was the temporary fabric structure closed at the end of the day?	Yes <input type="checkbox"/>	No <input type="checkbox"/>	N/A <input checked="" type="checkbox"/>
Has Contractor failed to protect all foundations and structures adjacent to and adjoining the site which are affected by the excavations or other operations connected with performance of the Work?	Yes <input type="checkbox"/>	No <input type="checkbox"/>	N/A <input checked="" type="checkbox"/>
If yes, has Contractor been notified?	Yes <input type="checkbox"/>	No <input type="checkbox"/>	N/A <input checked="" type="checkbox"/>
<u>Comments:</u>			

DAILY INSPECTION REPORT

Page 1 of 9

Report No. (Site Name) - NYSDEC Site No. 152125

Date: 07/27/21

[illegible]

Report No. (Site Name) - NYSDEC Site No. 152125

Date: 07/27/21

[illegible]

Equipment/Material Tracking Comments:

DAILY INSPECTION REPORT

Report No. (Site Name) - NYSDEC Site No. 152125

Date: 07/27/21

Visitors to Site			
Name	Representing	Entered Exclusion/CRZ Zone	
		Yes	No
		Yes	No
		Yes	No
		Yes	No
		Yes	No
		Yes	No
		Yes	No
		Yes	No
		Yes	No
Site Representatives			
Name	Representing		
Project Schedule Comments			
Issues Pending			
Interaction with Public, Property Owners, Media, etc.			

DAILY INSPECTION REPORT

Page 4 of 9

Report No. (Site Name) - NYSDEC Site No. 152125

Date: 07/27/21

Include (insert) figures with markups showing location of work and job progress

DAILY INSPECTION REPORT

Page 5 of 9

Report No. (Site Name) - NYSDEC Site No. 152125

Date: 07/27/21



Department of
Environmental
Conservation



DAILY INSPECTION REPORT

Page 6 of 9

Report No. (Site Name) - NYSDEC Site No. 152125

Date: 07/27/21

Site Photographs (Descriptions Below)	

DAILY INSPECTION REPORT

Page 7 of 9

Report No. (Site Name) - NYSDEC Site No. 152125

Date: 07/27/21

Comments	
Site Inspector(s):	Date:

DAILY INSPECTION REPORT

Report No. (Site Name) - NYSDEC Site No. 152125

Date: 07/27/21

DAILY HEALTH CHECKLIST

Is social distancing being practiced?	Yes <input checked="" type="checkbox"/>	No <input type="checkbox"/>
Is the tail gate safety meeting held outdoors?	Yes <input checked="" type="checkbox"/>	No <input type="checkbox"/>
Are remote/call in job meetings being held in lieu of meeting in person where possible?	Yes <input checked="" type="checkbox"/>	No <input type="checkbox"/>
Were personal protective gloves, masks, and eye protection being used?	Yes <input checked="" type="checkbox"/>	No <input type="checkbox"/>
Are sanitizing wipes, wash stations or spray available?	Yes <input checked="" type="checkbox"/>	No <input type="checkbox"/>
Have any workers/visitors been excluded based on close contact with individuals diagnosed with COVID-19, have recently traveled to restricted areas or countries, or are symptomatic (fever, chills, cough/shortness of breath)?	Yes <input type="checkbox"/>	No <input checked="" type="checkbox"/>
<u>Comments:</u>		

REMEDIAL ACTIVITIES AT PROPERTIES

1. Have anyone at this location been tested and confirmed to have COVID-19?	Yes <input type="checkbox"/>	No <input checked="" type="checkbox"/>
2. Is anyone at this location isolated or quarantined for COVID-19?	Yes <input type="checkbox"/>	No <input checked="" type="checkbox"/>
3. Has anyone at this locaton had contact with anyone known to have COVID-19 in the past 14 days?	Yes <input type="checkbox"/>	No <input checked="" type="checkbox"/>
4. Does anyone at this locaton have any symptoms of a respiratory infection (e.g., cough, sore throat, fever, or shortness of breath)?	Yes <input type="checkbox"/>	No <input checked="" type="checkbox"/>
5. Does the Department and its contractors have your permission to enter the property at this time?	Yes <input checked="" type="checkbox"/>	No <input type="checkbox"/>
If Yes to <u>any</u> of 1-4 above: <ul style="list-style-type: none"> If it is <u>not</u> critical that service/entry be carried out immediately and can be postponed until the risk of COVID-19 is lower, or can be accomplished remotely/without entry, postpone or conduct service without entry. If it <u>is</u> critical that service/entry be carried out immediately, advise occupants that as a precaution and for our own protection, project personnel will be donning appropriate PPE* (including respiratory protection) - and do so prior to entry. 	Yes <input type="checkbox"/>	No <input type="checkbox"/>
<u>Comments:</u>		

DAILY INSPECTION REPORT

Report No. _____ (Site Name) - NYSDEC Site No. 152125

Date: 07/27/21

NUISANCE CHECKLIST

Were there any community complaints related to work on this date?	Yes <input type="checkbox"/>	No <input checked="" type="checkbox"/>	N/A <input type="checkbox"/>
Were there any odors detected on this date?	Yes <input type="checkbox"/>	No <input checked="" type="checkbox"/>	N/A <input type="checkbox"/>
Was noise outside specification and/or above background on this date?	Yes <input type="checkbox"/>	No <input checked="" type="checkbox"/>	N/A <input type="checkbox"/>
Were vibration readings outside specification and/or above background on this date?	Yes <input type="checkbox"/>	No <input type="checkbox"/>	N/A <input checked="" type="checkbox"/>
Any visible dust observed beyond the work perimeter on this date?	Yes <input type="checkbox"/>	No <input type="checkbox"/>	N/A <input checked="" type="checkbox"/>
Any visible contrast (turbidity) beyond engineering controls observed on this date?	Yes <input type="checkbox"/>	No <input type="checkbox"/>	N/A <input checked="" type="checkbox"/>
Was turbidity checked at the Montauk Highway outfall?	AM <input type="checkbox"/>	PM <input type="checkbox"/>	N/A <input checked="" type="checkbox"/>
Were any property owners NOT provided advance notice for work performed on this property on this date?	Yes <input type="checkbox"/>	No <input type="checkbox"/>	N/A <input checked="" type="checkbox"/>
Was the temporary fabric structure closed at the end of the day?	Yes <input type="checkbox"/>	No <input type="checkbox"/>	N/A <input checked="" type="checkbox"/>
Has Contractor failed to protect all foundations and structures adjacent to and adjoining the site which are affected by the excavations or other operations connected with performance of the Work?	Yes <input type="checkbox"/>	No <input type="checkbox"/>	N/A <input checked="" type="checkbox"/>
If yes, has Contractor been notified?	Yes <input type="checkbox"/>	No <input type="checkbox"/>	N/A <input checked="" type="checkbox"/>
<u>Comments:</u> 			

DAILY INSPECTION REPORT

Report No. (Site Name) - NYSDEC Site No. 152125

Date: 07/28/21

[illegible]

DAILY INSPECTION REPORT

Page 2 of 9

Report No. (Site Name) - NYSDEC Site No. 152125

Date: 07/28/21

[illegible][illegible]

DAILY INSPECTION REPORT

Report No. (Site Name) - NYSDEC Site No. 152125

Date: 07/28/21

*On-Site scale for off-site shipment, delivery ticket for material received

Equipment/Material Tracking Comments:

Visitors to Site

Name	Representing	Entered Exclusion/CRZ Zone	
		Yes	No
		Yes	No
		Yes	No
		Yes	No
		Yes	No
		Yes	No
		Yes	No
		Yes	No
		Yes	No

Site Representatives

Name	Representing

Project Schedule Comments

DAILY INSPECTION REPORT

Page 4 of 9

Report No. (Site Name) - NYSDEC Site No. 152125

Date: 07/28/21

Issues Pending
Interaction with Public, Property Owners, Media, etc.

Include (insert) figures with markups showing location of work and job progress

DAILY INSPECTION REPORT

Page 5 of 9

Report No. (Site Name) - NYSDEC Site No. 152125

Date: 07/28/21



Department of
Environmental
Conservation



DAILY INSPECTION REPORT

Page 6 of 9

Report No. (Site Name) - NYSDEC Site No. 152125

Date: 07/28/21

Site Photographs (Descriptions Below)	

DAILY INSPECTION REPORT

Page 7 of 9

Report No. (Site Name) - NYSDEC Site No. 152125

Date: 07/28/21

Comments	
Site Inspector(s):	Date:

DAILY INSPECTION REPORT

Report No. (Site Name) - NYSDEC Site No. 152125

Date: 07/28/21

DAILY HEALTH CHECKLIST

Is social distancing being practiced?	Yes <input checked="" type="checkbox"/>	No <input type="checkbox"/>
Is the tail gate safety meeting held outdoors?	Yes <input checked="" type="checkbox"/>	No <input type="checkbox"/>
Are remote/call in job meetings being held in lieu of meeting in person where possible?	Yes <input checked="" type="checkbox"/>	No <input type="checkbox"/>
Were personal protective gloves, masks, and eye protection being used?	Yes <input checked="" type="checkbox"/>	No <input type="checkbox"/>
Are sanitizing wipes, wash stations or spray available?	Yes <input checked="" type="checkbox"/>	No <input type="checkbox"/>
Have any workers/visitors been excluded based on close contact with individuals diagnosed with COVID-19, have recently traveled to restricted areas or countries, or are symptomatic (fever, chills, cough/shortness of breath)?	Yes <input type="checkbox"/>	No <input checked="" type="checkbox"/>
<u>Comments:</u>		

REMEDIAL ACTIVITIES AT PROPERTIES

1. Have anyone at this location been tested and confirmed to have COVID-19?	Yes <input type="checkbox"/>	No <input checked="" type="checkbox"/>
2. Is anyone at this location isolated or quarantined for COVID-19?	Yes <input type="checkbox"/>	No <input checked="" type="checkbox"/>
3. Has anyone at this locaton had contact with anyone known to have COVID-19 in the past 14 days?	Yes <input type="checkbox"/>	No <input checked="" type="checkbox"/>
4. Does anyone at this locaton have any symptoms of a respiratory infection (e.g., cough, sore throat, fever, or shortness of breath)?	Yes <input type="checkbox"/>	No <input checked="" type="checkbox"/>
5. Does the Department and its contractors have your permission to enter the property at this time?	Yes <input checked="" type="checkbox"/>	No <input type="checkbox"/>
If Yes to <u>any</u> of 1-4 above: <ul style="list-style-type: none"> If it is <u>not</u> critical that service/entry be carried out immediately and can be postponed until the risk of COVID-19 is lower, or can be accomplished remotely/without entry, postpone or conduct service without entry. If it <u>is</u> critical that service/entry be carried out immediately, advise occupants that as a precaution and for our own protection, project personnel will be donning appropriate PPE* (including respiratory protection) - and do so prior to entry. 	Yes <input type="checkbox"/>	No <input type="checkbox"/>
<u>Comments:</u>		

DAILY INSPECTION REPORT

Report No. (Site Name) - NYSDEC Site No. 152125

Date: 07/28/21

NUISANCE CHECKLIST

Were there any community complaints related to work on this date?	Yes <input type="checkbox"/>	No <input checked="" type="checkbox"/>	N/A <input type="checkbox"/>
Were there any odors detected on this date?	Yes <input type="checkbox"/>	No <input checked="" type="checkbox"/>	N/A <input type="checkbox"/>
Was noise outside specification and/or above background on this date?	Yes <input type="checkbox"/>	No <input checked="" type="checkbox"/>	N/A <input type="checkbox"/>
Were vibration readings outside specification and/or above background on this date?	Yes <input type="checkbox"/>	No <input type="checkbox"/>	N/A <input checked="" type="checkbox"/>
Any visible dust observed beyond the work perimeter on this date?	Yes <input type="checkbox"/>	No <input type="checkbox"/>	N/A <input checked="" type="checkbox"/>
Any visible contrast (turbidity) beyond engineering controls observed on this date?	Yes <input type="checkbox"/>	No <input type="checkbox"/>	N/A <input checked="" type="checkbox"/>
Was turbidity checked at the Montauk Highway outfall?	AM <input type="checkbox"/>	PM <input type="checkbox"/>	N/A <input checked="" type="checkbox"/>
Were any property owners NOT provided advance notice for work performed on this property on this date?	Yes <input type="checkbox"/>	No <input type="checkbox"/>	N/A <input checked="" type="checkbox"/>
Was the temporary fabric structure closed at the end of the day?	Yes <input type="checkbox"/>	No <input type="checkbox"/>	N/A <input checked="" type="checkbox"/>
Has Contractor failed to protect all foundations and structures adjacent to and adjoining the site which are affected by the excavations or other operations connected with performance of the Work?	Yes <input type="checkbox"/>	No <input type="checkbox"/>	N/A <input checked="" type="checkbox"/>
If yes, has Contractor been notified?	Yes <input type="checkbox"/>	No <input type="checkbox"/>	N/A <input checked="" type="checkbox"/>
<u>Comments:</u>			

Report No. (Site Name) - NYSDEC Site No. 152125

Date: 08/31/21



NEW YORK STATE
Department of
Environmental
Conservation
50

DAILY INSPECTION REPORT

Page 2 of 9

Report No. (Site Name) - NYSDEC Site No. 152125

Date: 08/31/21

[illegible][illegible]

*On-Site scale for off-site shipment, delivery ticket for material received

Equipment/Material Tracking Comments:

DAILY INSPECTION REPORT

Report No. (Site Name) - NYSDEC Site No. 152125

Date: 08/31/21

Visitors to Site			
Name	Representing	Entered Exclusion/CRZ Zone	
		Yes	No
		Yes	No
		Yes	No
		Yes	No
		Yes	No
		Yes	No
		Yes	No
		Yes	No
		Yes	No
Site Representatives			
Name	Representing		
Project Schedule Comments			
Issues Pending			
Interaction with Public, Property Owners, Media, etc.			

DAILY INSPECTION REPORT

Page 4 of 9

Report No. (Site Name) - NYSDEC Site No. 152125

Date: 08/31/21

Include (insert) figures with markups showing location of work and job progress

DAILY INSPECTION REPORT

Page 5 of 9

Report No. (Site Name) - NYSDEC Site No. 152125

Date: 08/31/21



Department of
Environmental
Conservation



DAILY INSPECTION REPORT

Report No. (Site Name) - NYSDEC Site No. 152125

Date: 08/31/21

Site Photographs (Descriptions Below)	

DAILY INSPECTION REPORT

Page 7 of 9

Report No. (Site Name) - NYSDEC Site No. 152125

Date: 08/31/21

Comments	
Site Inspector(s):	Date:

DAILY INSPECTION REPORT

Report No. (Site Name) - NYSDEC Site No. 152125

Date: 08/31/21

DAILY HEALTH CHECKLIST

Is social distancing being practiced?	Yes <input checked="" type="checkbox"/>	No <input type="checkbox"/>
Is the tail gate safety meeting held outdoors?	Yes <input checked="" type="checkbox"/>	No <input type="checkbox"/>
Are remote/call in job meetings being held in lieu of meeting in person where possible?	Yes <input checked="" type="checkbox"/>	No <input type="checkbox"/>
Were personal protective gloves, masks, and eye protection being used?	Yes <input checked="" type="checkbox"/>	No <input type="checkbox"/>
Are sanitizing wipes, wash stations or spray available?	Yes <input checked="" type="checkbox"/>	No <input type="checkbox"/>
Have any workers/visitors been excluded based on close contact with individuals diagnosed with COVID-19, have recently traveled to restricted areas or countries, or are symptomatic (fever, chills, cough/shortness of breath)?	Yes <input type="checkbox"/>	No <input checked="" type="checkbox"/>
<u>Comments:</u>		

REMEDIAL ACTIVITIES AT PROPERTIES

1. Have anyone at this location been tested and confirmed to have COVID-19?	Yes <input type="checkbox"/>	No <input checked="" type="checkbox"/>
2. Is anyone at this location isolated or quarantined for COVID-19?	Yes <input type="checkbox"/>	No <input checked="" type="checkbox"/>
3. Has anyone at this locaton had contact with anyone known to have COVID-19 in the past 14 days?	Yes <input type="checkbox"/>	No <input checked="" type="checkbox"/>
4. Does anyone at this locaton have any symptoms of a respiratory infection (e.g., cough, sore throat, fever, or shortness of breath)?	Yes <input type="checkbox"/>	No <input checked="" type="checkbox"/>
5. Does the Department and its contractors have your permission to enter the property at this time?	Yes <input checked="" type="checkbox"/>	No <input type="checkbox"/>
If Yes to <u>any</u> of 1-4 above: <ul style="list-style-type: none"> If it is <u>not</u> critical that service/entry be carried out immediately and can be postponed until the risk of COVID-19 is lower, or can be accomplished remotely/without entry, postpone or conduct service without entry. If it <u>is</u> critical that service/entry be carried out immediately, advise occupants that as a precaution and for our own protection, project personnel will be donning appropriate PPE* (including respiratory protection) - and do so prior to entry. 	Yes <input type="checkbox"/>	No <input type="checkbox"/>
<u>Comments:</u>		

DAILY INSPECTION REPORT

Report No. _____ (Site Name) - NYSDEC Site No. 152125

Date: 08/31/21

NUISANCE CHECKLIST

Were there any community complaints related to work on this date?	Yes <input type="checkbox"/>	No <input checked="" type="checkbox"/>	N/A <input type="checkbox"/>
Were there any odors detected on this date?	Yes <input type="checkbox"/>	No <input checked="" type="checkbox"/>	N/A <input type="checkbox"/>
Was noise outside specification and/or above background on this date?	Yes <input type="checkbox"/>	No <input checked="" type="checkbox"/>	N/A <input type="checkbox"/>
Were vibration readings outside specification and/or above background on this date?	Yes <input type="checkbox"/>	No <input type="checkbox"/>	N/A <input checked="" type="checkbox"/>
Any visible dust observed beyond the work perimeter on this date?	Yes <input type="checkbox"/>	No <input type="checkbox"/>	N/A <input checked="" type="checkbox"/>
Any visible contrast (turbidity) beyond engineering controls observed on this date?	Yes <input type="checkbox"/>	No <input type="checkbox"/>	N/A <input checked="" type="checkbox"/>
Was turbidity checked at the Montauk Highway outfall?	AM <input type="checkbox"/>	PM <input type="checkbox"/>	N/A <input checked="" type="checkbox"/>
Were any property owners NOT provided advance notice for work performed on this property on this date?	Yes <input type="checkbox"/>	No <input type="checkbox"/>	N/A <input checked="" type="checkbox"/>
Was the temporary fabric structure closed at the end of the day?	Yes <input type="checkbox"/>	No <input type="checkbox"/>	N/A <input checked="" type="checkbox"/>
Has Contractor failed to protect all foundations and structures adjacent to and adjoining the site which are affected by the excavations or other operations connected with performance of the Work?	Yes <input type="checkbox"/>	No <input type="checkbox"/>	N/A <input checked="" type="checkbox"/>
If yes, has Contractor been notified?	Yes <input type="checkbox"/>	No <input type="checkbox"/>	N/A <input checked="" type="checkbox"/>
<u>Comments:</u>			

DAILY INSPECTION REPORT

Page 1 of 9

Report No. (Site Name) - NYSDEC Site No. 152125

Date: 09/28/21

[illegible]

DAILY INSPECTION REPORT

Report No. (Site Name) - NYSDEC Site No. 152125

Date: 09/28/21

[illegible][illegible]

*On-Site scale for off-site shipment, delivery ticket for material received

Equipment/Material Tracking Comments:

DAILY INSPECTION REPORT

Report No. (Site Name) - NYSDEC Site No. 152125

Date: 09/28/21

Visitors to Site			
Name	Representing	Entered Exclusion/CRZ Zone	
		Yes	No
		Yes	No
		Yes	No
		Yes	No
		Yes	No
		Yes	No
		Yes	No
		Yes	No
		Yes	No
Site Representatives			
Name	Representing		
Project Schedule Comments			
Issues Pending			
Interaction with Public, Property Owners, Media, etc.			

DAILY INSPECTION REPORT

Page 4 of 9

Report No. (Site Name) - NYSDEC Site No. 152125

Date: 09/28/21

Include (insert) figures with markups showing location of work and job progress

DAILY INSPECTION REPORT

Page 5 of 9

Report No. (Site Name) - NYSDEC Site No. 152125

Date: 09/28/21

DAILY INSPECTION REPORT

Page 6 of 9

Report No. (Site Name) - NYSDEC Site No. 152125

Date: 09/28/21

Site Photographs (Descriptions Below)	

DAILY INSPECTION REPORT

Page 7 of 9

Report No. (Site Name) - NYSDEC Site No. 152125

Date: 09/28/21

Comments	
Site Inspector(s):	Date:

DAILY INSPECTION REPORT

Report No. (Site Name) - NYSDEC Site No. 152125

Date: 09/28/21

DAILY HEALTH CHECKLIST

Is social distancing being practiced?	Yes <input checked="" type="checkbox"/>	No <input type="checkbox"/>
Is the tail gate safety meeting held outdoors?	Yes <input checked="" type="checkbox"/>	No <input type="checkbox"/>
Are remote/call in job meetings being held in lieu of meeting in person where possible?	Yes <input checked="" type="checkbox"/>	No <input type="checkbox"/>
Were personal protective gloves, masks, and eye protection being used?	Yes <input checked="" type="checkbox"/>	No <input type="checkbox"/>
Are sanitizing wipes, wash stations or spray available?	Yes <input checked="" type="checkbox"/>	No <input type="checkbox"/>
Have any workers/visitors been excluded based on close contact with individuals diagnosed with COVID-19, have recently traveled to restricted areas or countries, or are symptomatic (fever, chills, cough/shortness of breath)?	Yes <input type="checkbox"/>	No <input checked="" type="checkbox"/>
<u>Comments:</u>		

REMEDIAL ACTIVITIES AT PROPERTIES

1. Have anyone at this location been tested and confirmed to have COVID-19?	Yes <input type="checkbox"/>	No <input checked="" type="checkbox"/>
2. Is anyone at this location isolated or quarantined for COVID-19?	Yes <input type="checkbox"/>	No <input checked="" type="checkbox"/>
3. Has anyone at this locaton had contact with anyone known to have COVID-19 in the past 14 days?	Yes <input type="checkbox"/>	No <input checked="" type="checkbox"/>
4. Does anyone at this locaton have any symptoms of a respiratory infection (e.g., cough, sore throat, fever, or shortness of breath)?	Yes <input type="checkbox"/>	No <input checked="" type="checkbox"/>
5. Does the Department and its contractors have your permission to enter the property at this time?	Yes <input checked="" type="checkbox"/>	No <input type="checkbox"/>
If Yes to <u>any</u> of 1-4 above: <ul style="list-style-type: none"> If it is <u>not</u> critical that service/entry be carried out immediately and can be postponed until the risk of COVID-19 is lower, or can be accomplished remotely/without entry, postpone or conduct service without entry. If it <u>is</u> critical that service/entry be carried out immediately, advise occupants that as a precaution and for our own protection, project personnel will be donning appropriate PPE* (including respiratory protection) - and do so prior to entry. 	Yes <input type="checkbox"/>	No <input type="checkbox"/>
<u>Comments:</u>		

DAILY INSPECTION REPORT

Report No. (Site Name) - NYSDEC Site No. 152125

Date: 09/28/21

NUISANCE CHECKLIST

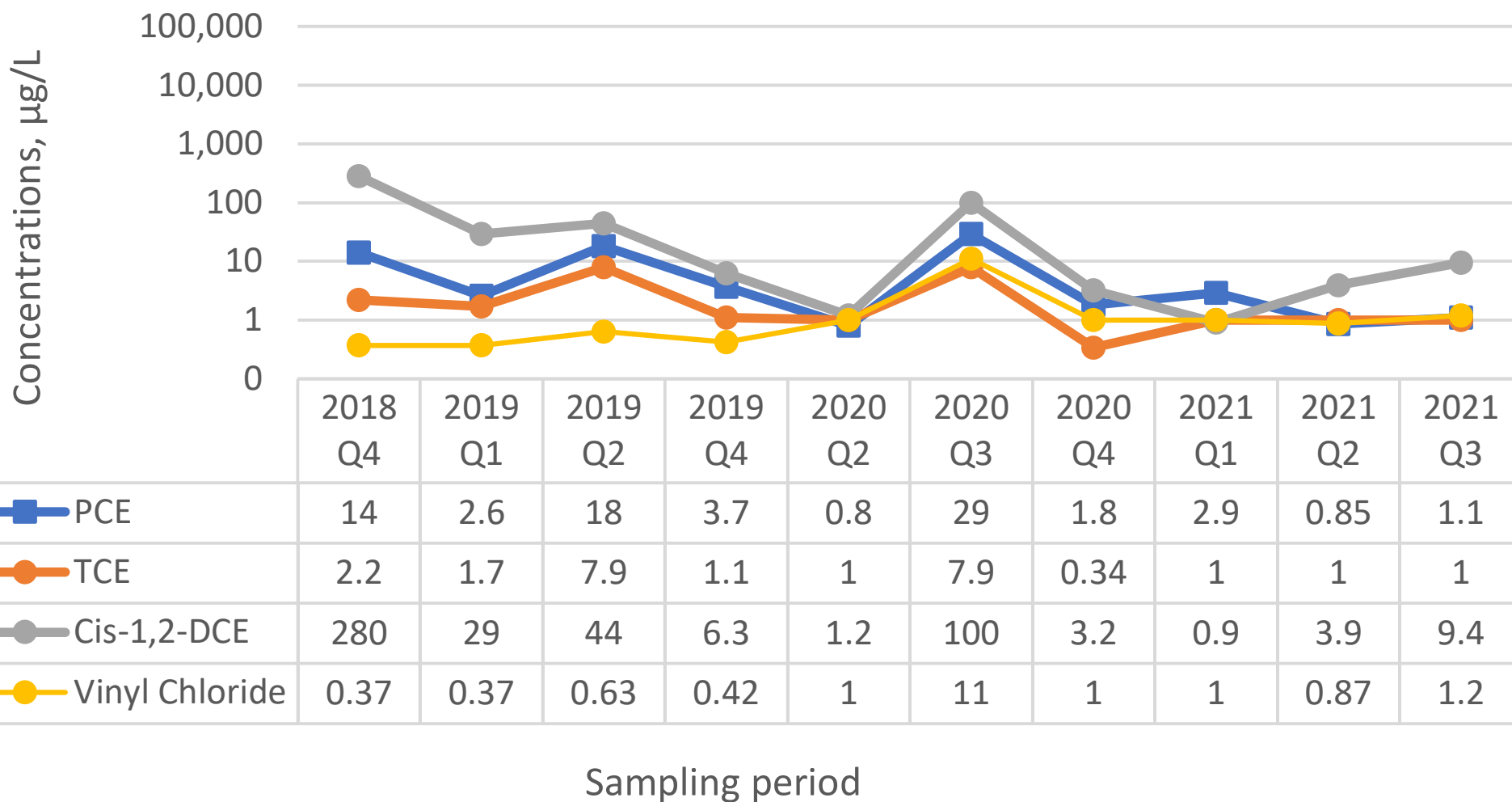
Were there any community complaints related to work on this date?	Yes <input type="checkbox"/>	No <input checked="" type="checkbox"/>	N/A <input type="checkbox"/>
Were there any odors detected on this date?	Yes <input type="checkbox"/>	No <input checked="" type="checkbox"/>	N/A <input type="checkbox"/>
Was noise outside specification and/or above background on this date?	Yes <input type="checkbox"/>	No <input checked="" type="checkbox"/>	N/A <input type="checkbox"/>
Were vibration readings outside specification and/or above background on this date?	Yes <input type="checkbox"/>	No <input type="checkbox"/>	N/A <input checked="" type="checkbox"/>
Any visible dust observed beyond the work perimeter on this date?	Yes <input type="checkbox"/>	No <input type="checkbox"/>	N/A <input checked="" type="checkbox"/>
Any visible contrast (turbidity) beyond engineering controls observed on this date?	Yes <input type="checkbox"/>	No <input type="checkbox"/>	N/A <input checked="" type="checkbox"/>
Was turbidity checked at the Montauk Highway outfall?	AM <input type="checkbox"/>	PM <input type="checkbox"/>	N/A <input checked="" type="checkbox"/>
Were any property owners NOT provided advance notice for work performed on this property on this date?	Yes <input type="checkbox"/>	No <input type="checkbox"/>	N/A <input checked="" type="checkbox"/>
Was the temporary fabric structure closed at the end of the day?	Yes <input type="checkbox"/>	No <input type="checkbox"/>	N/A <input checked="" type="checkbox"/>
Has Contractor failed to protect all foundations and structures adjacent to and adjoining the site which are affected by the excavations or other operations connected with performance of the Work?	Yes <input type="checkbox"/>	No <input type="checkbox"/>	N/A <input checked="" type="checkbox"/>
If yes, has Contractor been notified?	Yes <input type="checkbox"/>	No <input type="checkbox"/>	N/A <input checked="" type="checkbox"/>
<u>Comments:</u>			

APPENDIX B

Temporal Variations of VOCs Concentrations

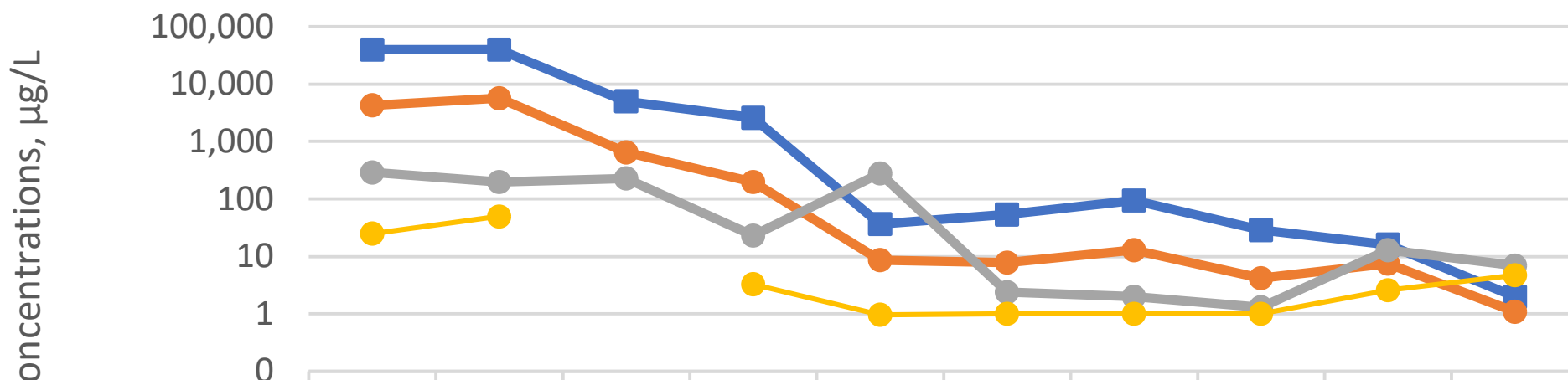
Temporal Variations of VOCs Concentrations
Active Industrial Uniform Superfund Site #152125
63 West Merrick Road, Lindenhurst, New York
HRP# DEC1004.OM

MW-2S



Temporal Variations of VOCs Concentrations
Active Industrial Uniform Superfund Site #152125
63 West Merrick Road, Lindenhurst, New York
HRP# DEC1004.OM

MW-4D

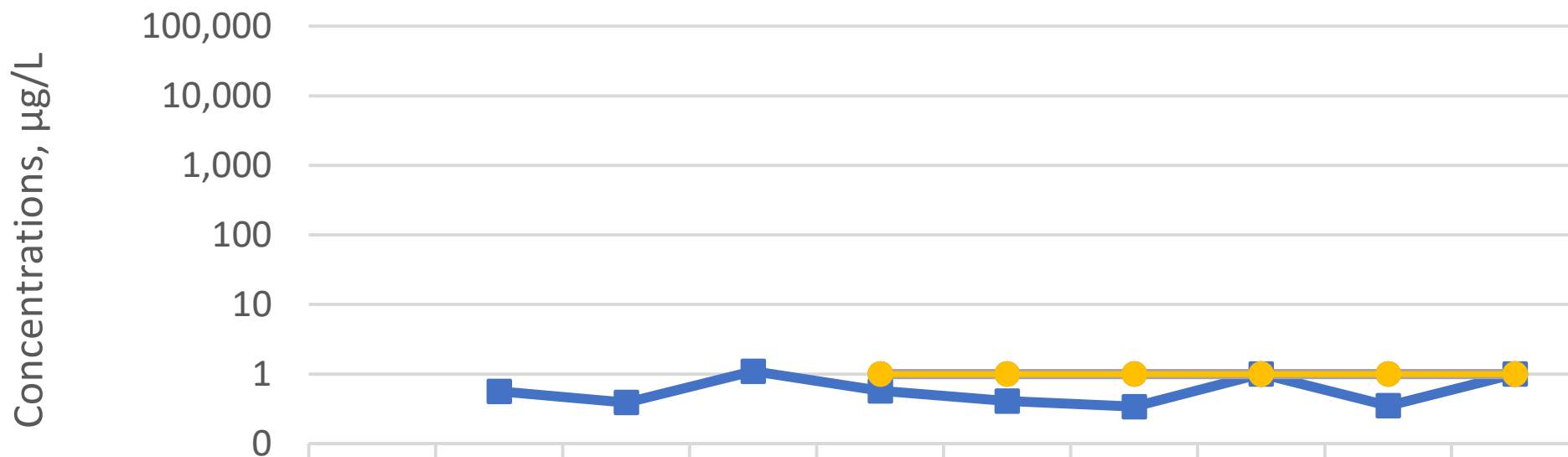


	2018 Q4	2019 Q1	2019 Q2	2019 Q4	2020 Q2	2020 Q3	2020 Q4	2021 Q1	2021 Q2	2021 Q3
■ PCE	40,00	40,00	5,000	2,600	37	54	95	29	16	2
● TCE	4,300	5,700	650	200	8.7	7.8	13	4.2	7.5	1.1
● Cis-1,2-DCE	290	200	230	23	280	2.4	2	1.3	13	6.9
● Vinyl Chloride	25	50	0	3.3	0.96	1	1	1	2.6	4.7

Sampling period

Temporal Variations of VOCs Concentrations
Active Industrial Uniform Superfund Site #152125
63 West Merrick Road, Lindenhurst, New York
HRP# DEC1004.OM

MW-5S

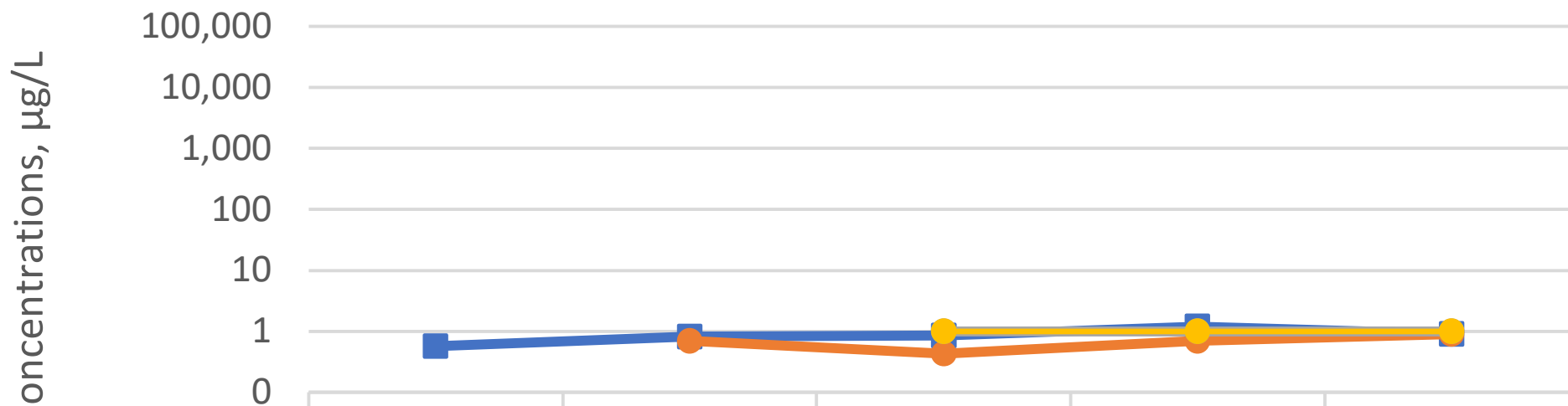


■ PCE	0	0.56	0.39	1.1	0.57	0.41	0.34	1	0.35	1
● TCE	0	0	0	0	1	1	1	1	1	1
● Cis-1,2-DCE	0	0	0	0	1	1	1	1	1	1
● Vinyl Chloride	0	0	0	0	1	1	1	1	1	1

Sampling period

Temporal Variations of VOCs Concentrations
Active Industrial Uniform Superfund Site #152125
63 West Merrick Road, Lindenhurst, New York
HRP# DEC1004.OM

MW-101

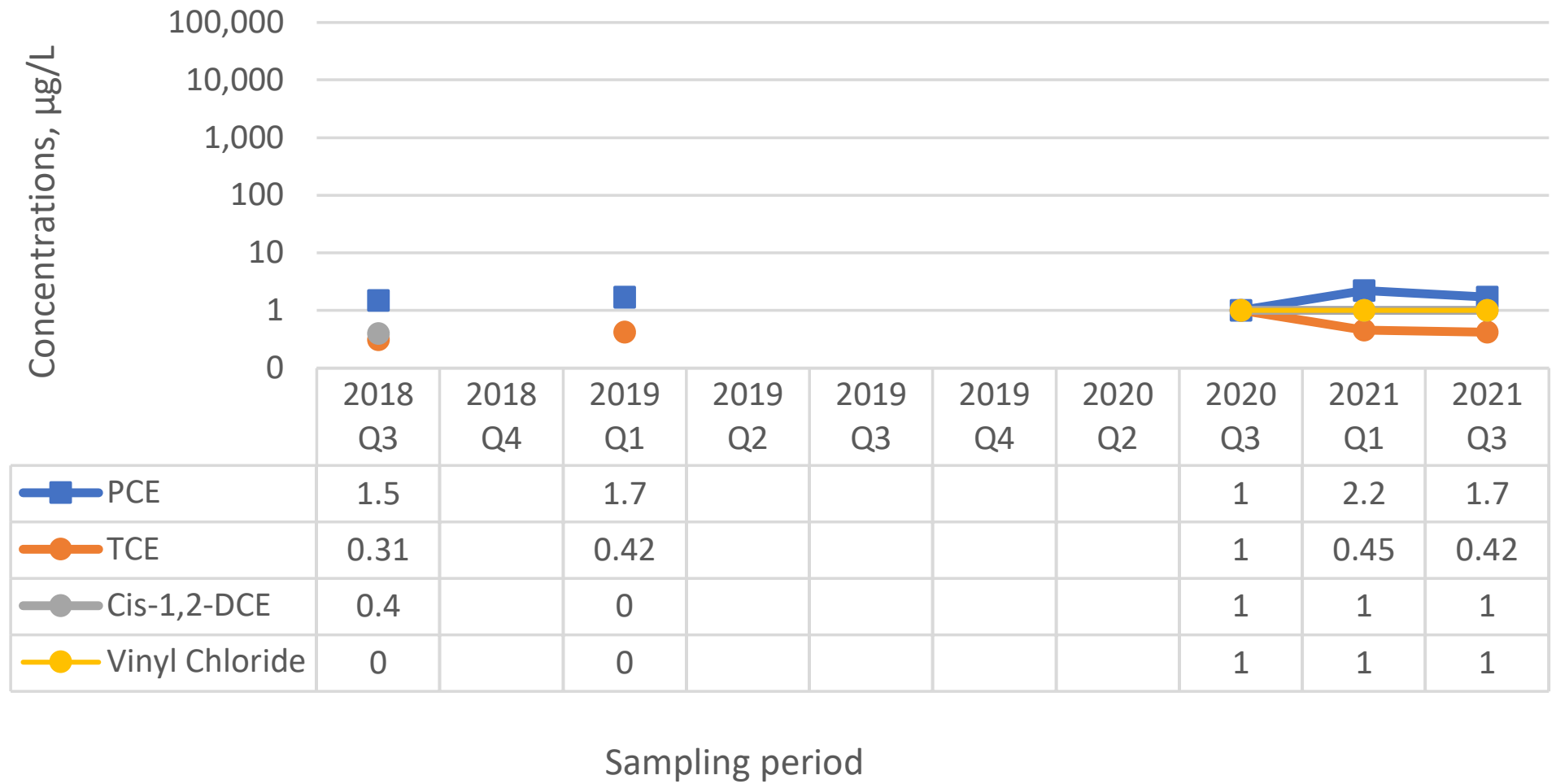


	2018 Q3	2019 Q1	2020 Q3	2021 Q1	2021 Q3
■ PCE	0.57	0.83	0.85	1.2	0.9
● TCE	0	0.7	0.43	0.7	0.71
● Cis-1,2-DCE	0	0	1	1	1
● Vinyl Chloride	0	0	1	1	1

Sampling period

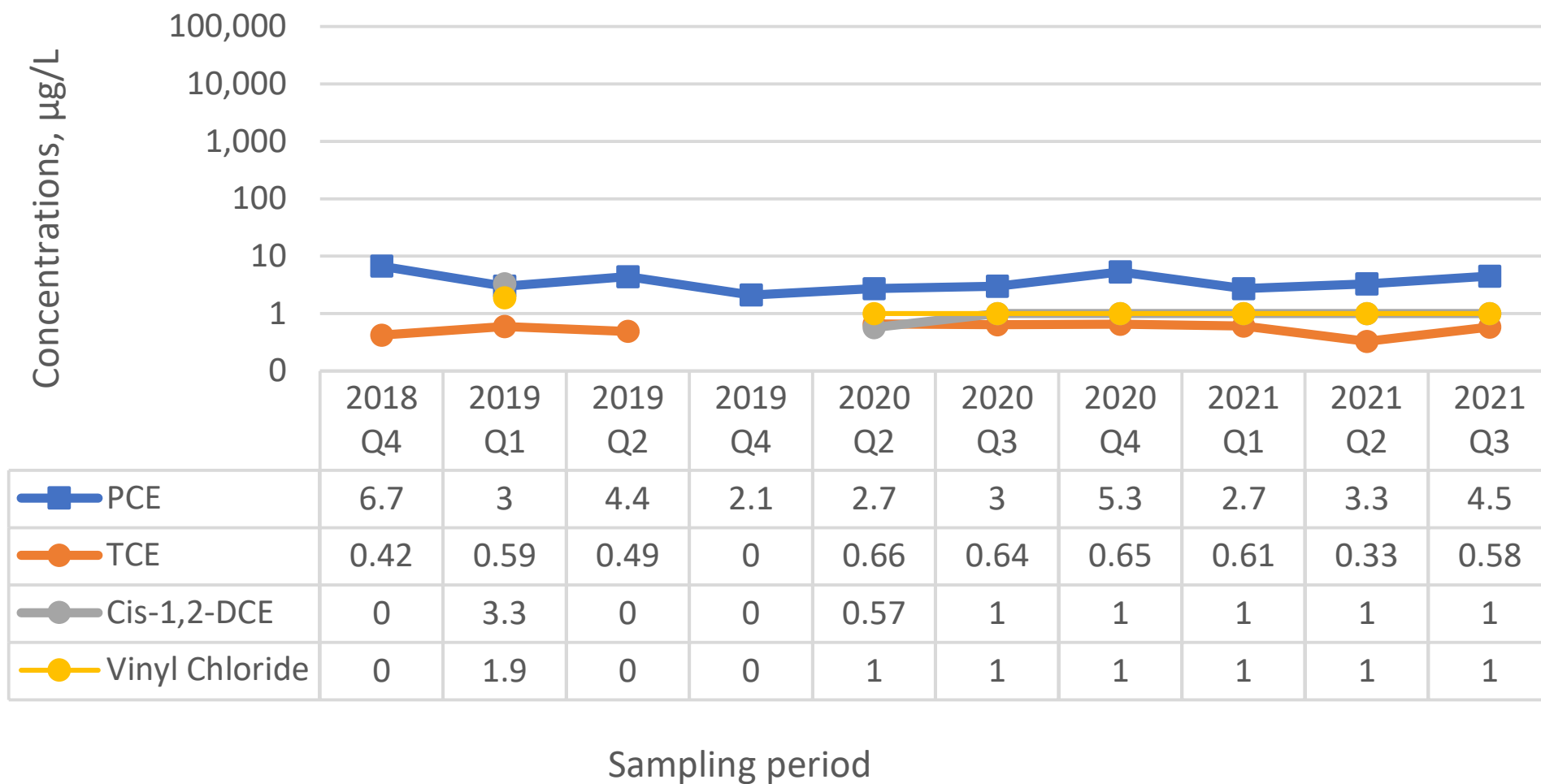
Temporal Variations of VOCs Concentrations
Active Industrial Uniform Superfund Site #152125
63 West Merrick Road, Lindenhurst, New York
HRP# DEC1004.OM

MW-102



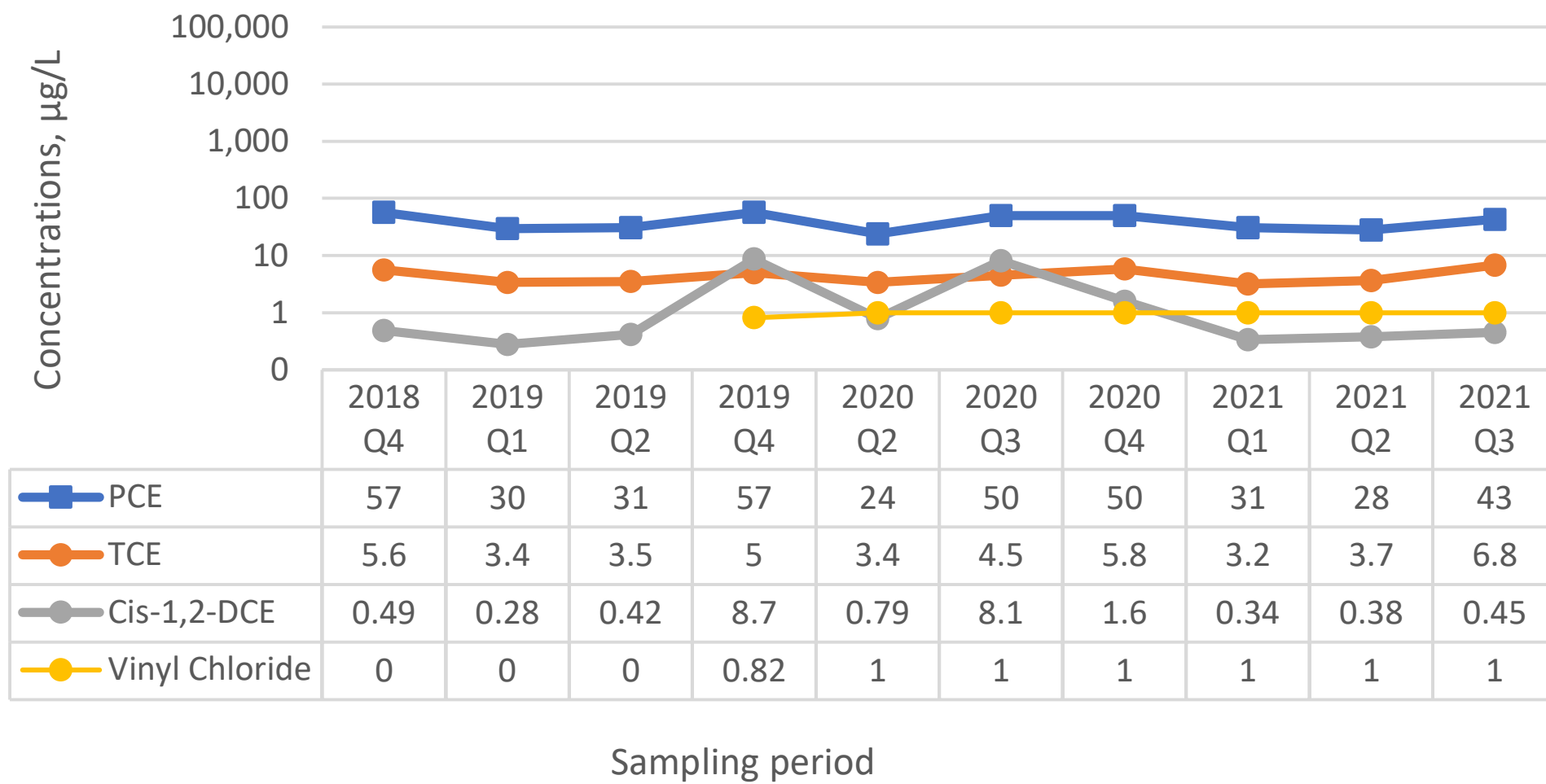
Temporal Variations of VOCs Concentrations
Active Industrial Uniform Superfund Site #152125
63 West Merrick Road, Lindenhurst, New York
HRP# DEC1004.OM

MW-103



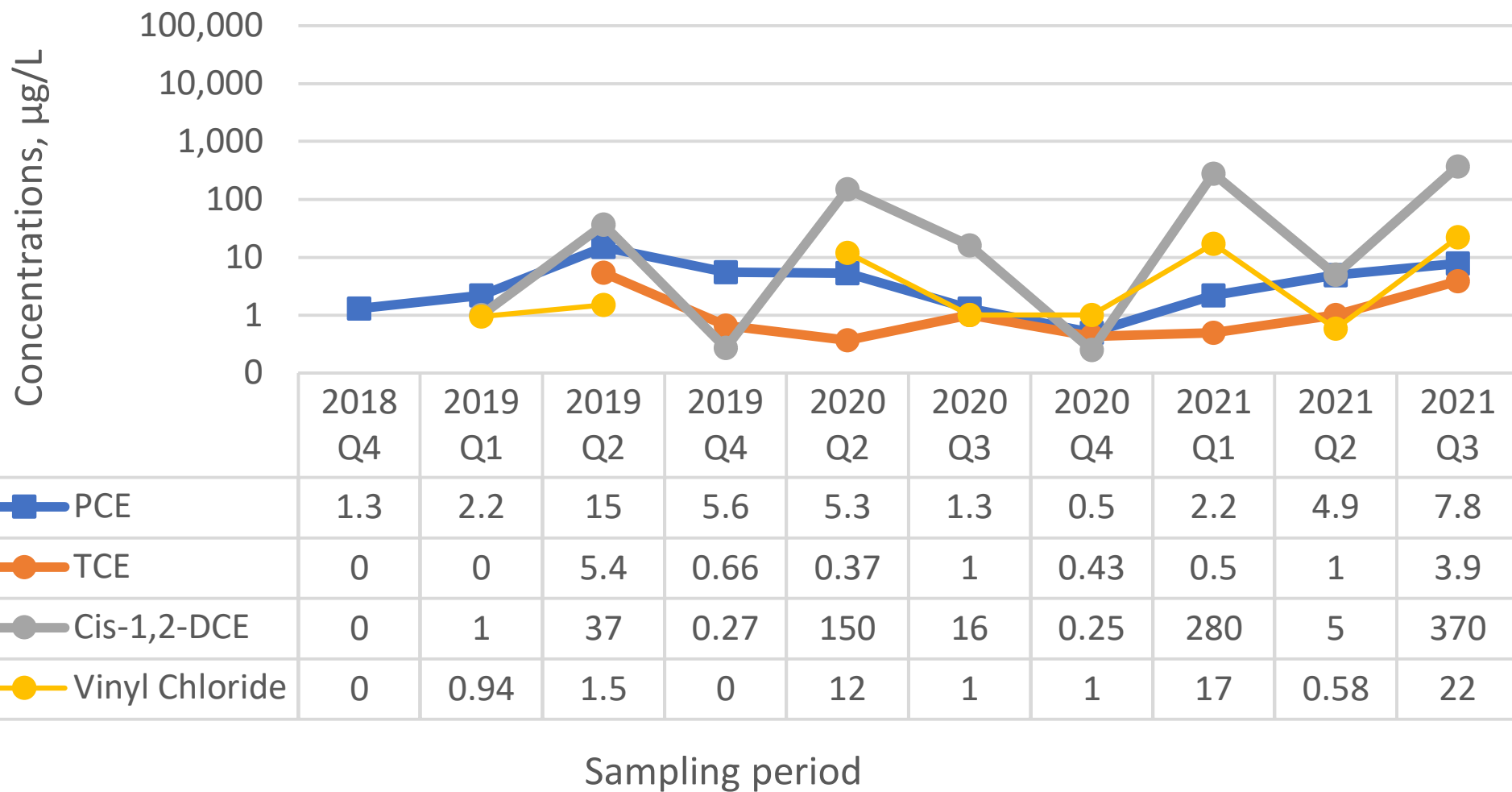
Temporal Variations of VOCs Concentrations
Active Industrial Uniform Superfund Site #152125
63 West Merrick Road, Lindenhurst, New York
HRP# DEC1004.OM

MW-104



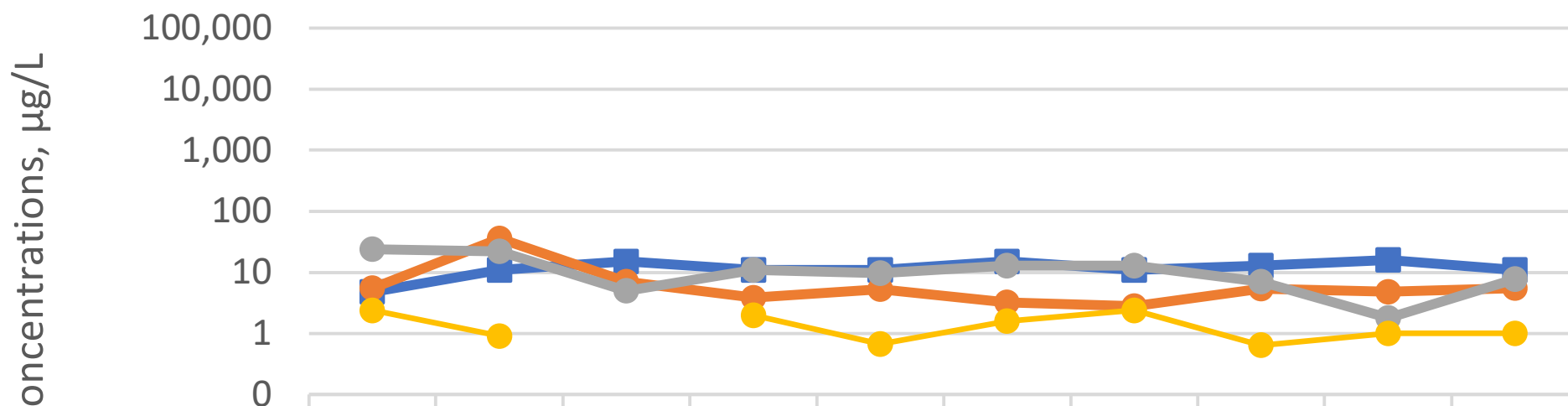
Temporal Variations of VOCs Concentrations
Active Industrial Uniform Superfund Site #152125
63 West Merrick Road, Lindenhurst, New York
HRP# DEC1004.OM

MW-105



Temporal Variations of VOCs Concentrations
Active Industrial Uniform Superfund Site #152125
63 West Merrick Road, Lindenhurst, New York
HRP# DEC1004.OM

MW-106

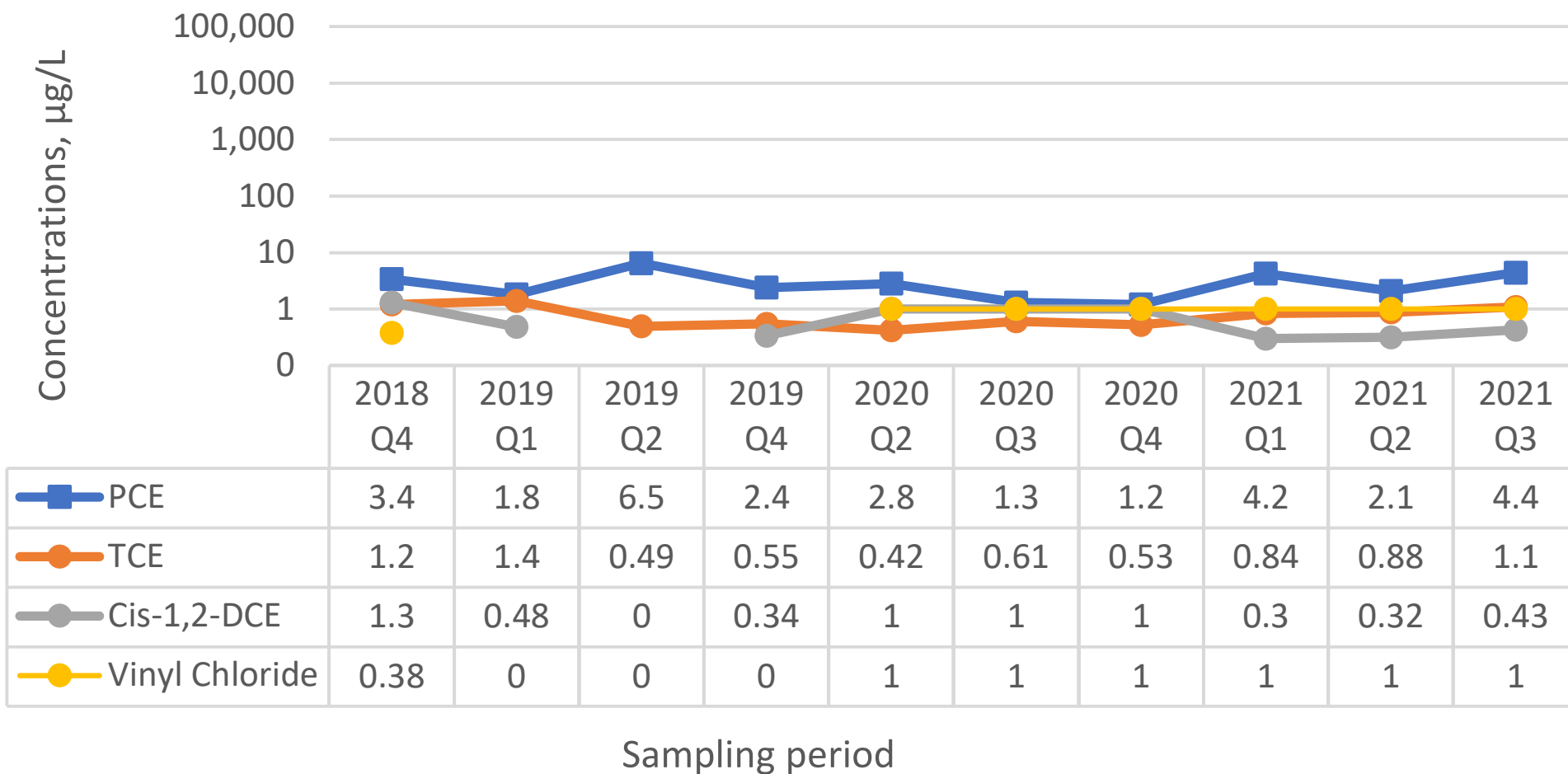


	2018 Q4	2019 Q1	2019 Q2	2019 Q4	2020 Q2	2020 Q3	2020 Q4	2021 Q1	2021 Q2	2021 Q3
■ PCE	4.8	11	15	11	11	15	11	13	16	11
● TCE	5.6	36	7.1	3.9	5.3	3.2	2.8	5.4	4.8	5.5
● Cis-1,2-DCE	24	22	5	11	9.8	13	13	7	1.8	7.8
● Vinyl Chloride	2.4	0.9	0	2	0.67	1.6	2.4	0.64	1	1

Sampling period

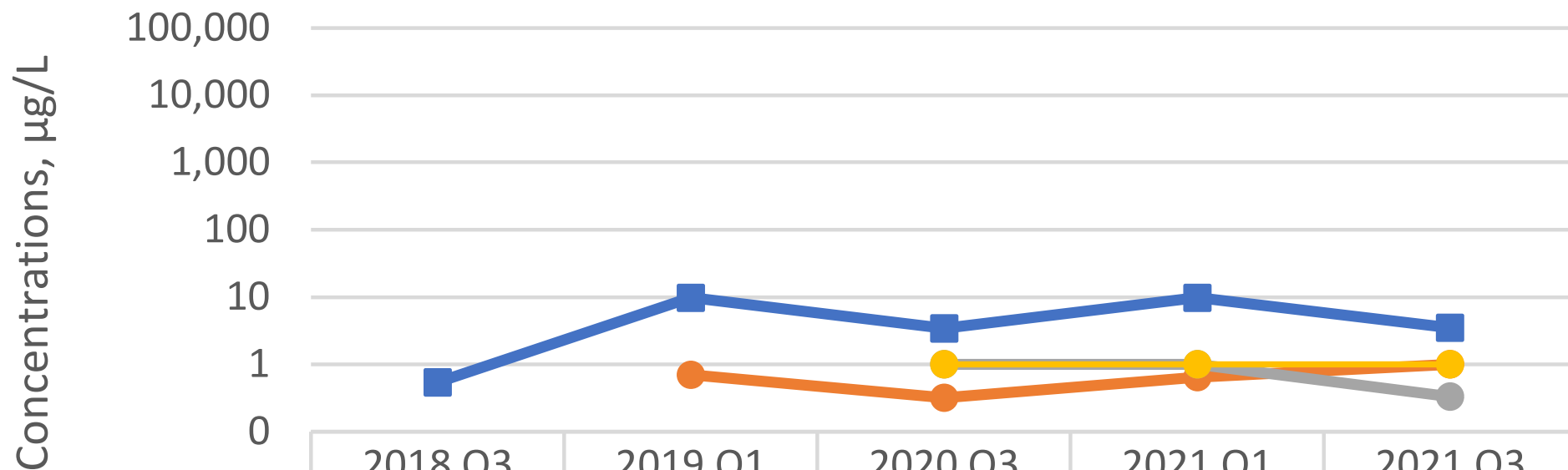
Temporal Variations of VOCs Concentrations
Active Industrial Uniform Superfund Site #152125
63 West Merrick Road, Lindenhurst, New York
HRP# DEC1004.OM

MW-107



Temporal Variations of VOCs Concentrations
Active Industrial Uniform Superfund Site #152125
63 West Merrick Road, Lindenhurst, New York
HRP# DEC1004.OM

MW-108

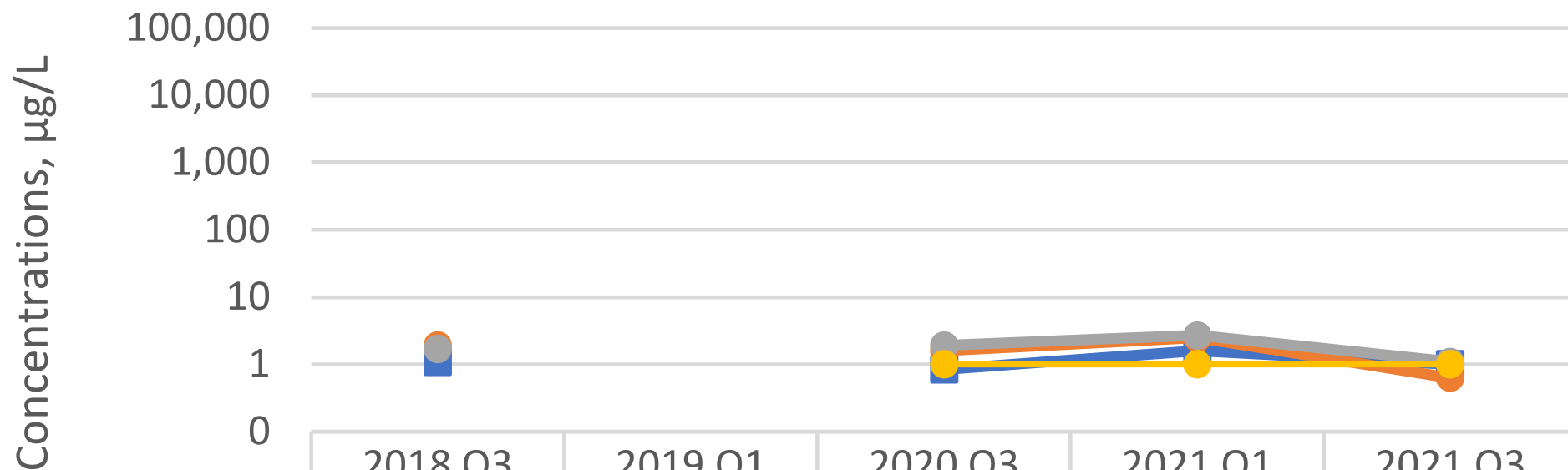






■ PCE	0.54	9.8	3.4	9.8	3.5
● TCE	0	0.7	0.32	0.64	1
● Cis-1,2-DCE	0	0	1	1	0.33
● Vinyl Chloride	0	0	1	1	1

Sampling period

Temporal Variations of VOCs Concentrations
Active Industrial Uniform Superfund Site #152125
63 West Merrick Road, Lindenhurst, New York
HRP# DEC1004.OM

MW-109

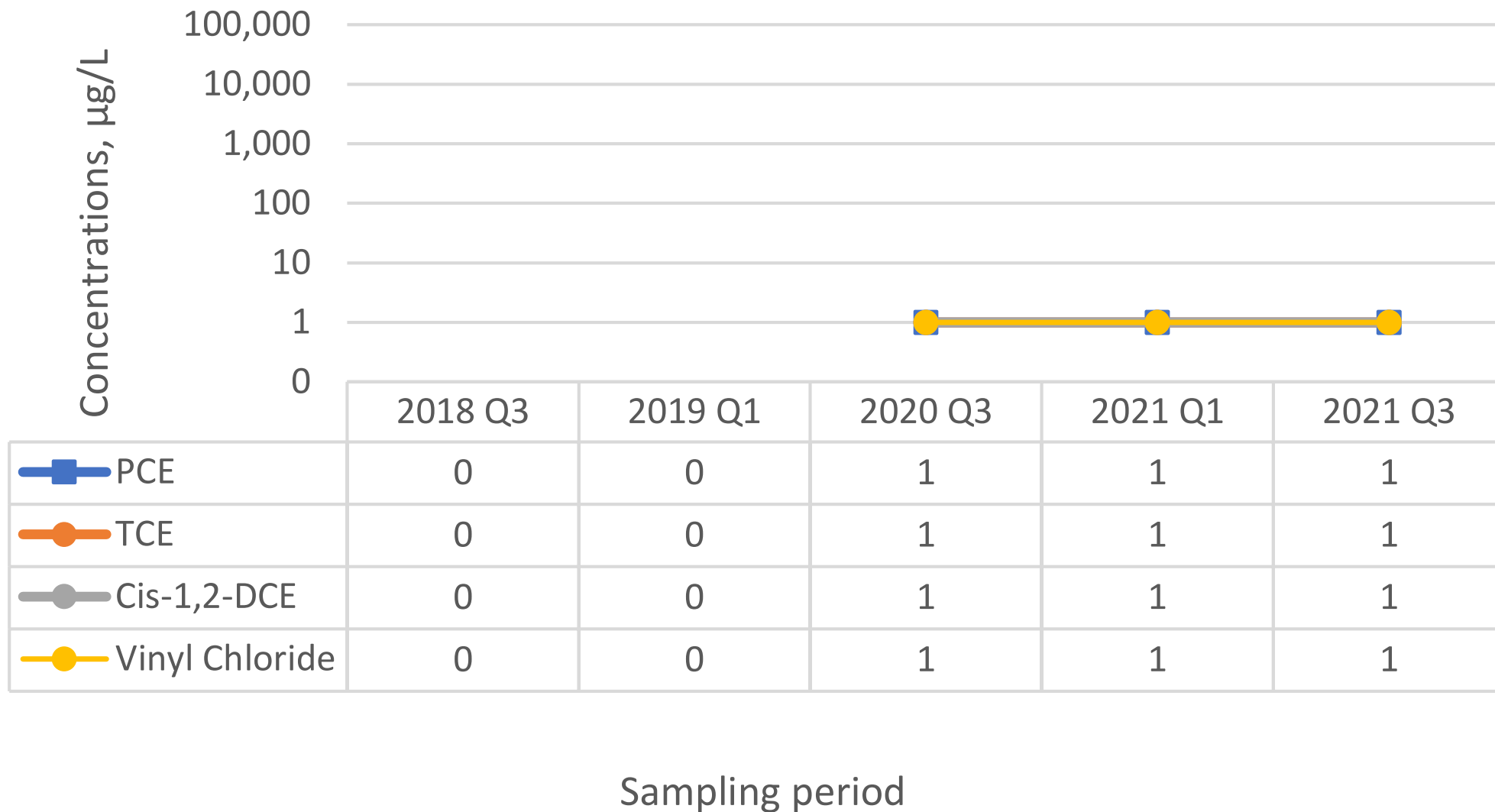


 PCE	1.1	0	0.84	1.6	1
 TCE	1.9	0	1.6	2.5	0.63
 Cis-1,2-DCE	1.7	0	1.9	2.7	1.1
 Vinyl Chloride	0	0	1	1	1

Sampling period

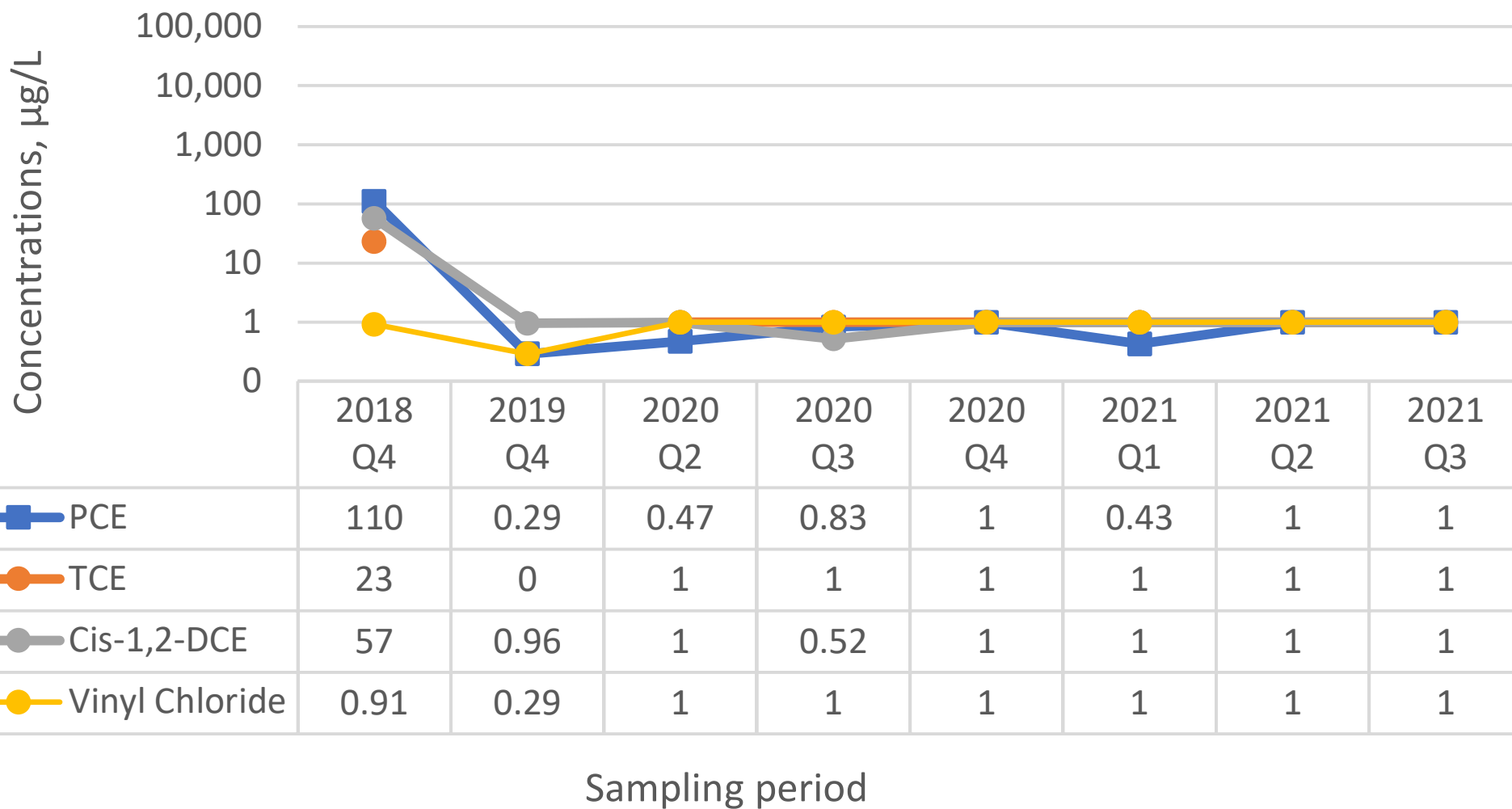
Temporal Variations of VOCs Concentrations
Active Industrial Uniform Superfund Site #152125
63 West Merrick Road, Lindenhurst, New York
HRP# DEC1004.OM

MW-111



Temporal Variations of VOCs Concentrations
Active Industrial Uniform Superfund Site #152125
63 West Merrick Road, Lindenhurst, New York
HRP# DEC1004.OM

RW-1



Temporal Variations of VOCs Concentrations
Active Industrial Uniform Superfund Site #152125
63 West Merrick Road, Lindenhurst, New York
HRP# DEC1004.OM

RW-2

