



MOVE YOUR ENVIRONMENT FORWARD

QUARTERLY OPERATION AND MAINTENANCE REPORT – FOURTH QUARTER 2021

Active Industrial Uniform Superfund Site

63 West Merrick Road
Lindenhurst, New York

NYSDEC Site Number: 152125

Prepared For:

New York State Department of Environmental Conservation
625 Broadway
Albany, New York 12233
Contract #D009808

Prepared By:

HRP Associates, Inc.
197 Scott Swamp Road
Farmington, CT 06032

HRP #: DEC1004.OM

Issued On: February 7, 2022



TABLE OF CONTENTS

1.0 INTRODUCTION 1

2.0 SITE BACKGROUND 2

 2.1 Site Location and Description2

 2.2 Site Geology and Hydrogeology.....2

 2.3 Background and Remedial History2

 2.4 Site Cleanup Objectives3

3.0 OPERATIONS AND MAINTENANCE PROGRAM 4

 3.1 Groundwater Extraction and Treatment System Operations and Maintenance4

 3.2 Site Maintenance Activities.....4

4.0 MONITORING PROGRAM 5

 4.1 Groundwater Sampling5

5.0 MAINTENANCE ISSUES AND RECOMMENDED SOLUTIONS..... 9

6.0 FUTURE ACTIVITIES 10

7.0 PROGRESS TOWARD CLEANUP OBJECTIVES 11



Figures

Figure 1	Site Location
Figure 2	Site Map Showing Groundwater Sampling Locations
Figure 3	Site and Surrounding Area: Groundwater Sampling Locations
Figure 4	Inferred Groundwater Contour Map

Tables

Table 1	Groundwater Sampling Requirements and Schedule
Table 2	Target VOCs in Groundwater
Table 3	Metals in Groundwater

Appendices

Appendix A	Operation and Maintenance Reports
Appendix B	Temporal Variations of Measured Parameters

General Information

Project/Site Information:

Active Industrial Uniform Superfund Site
63 West Merrick Road
Lindenhurst, New York

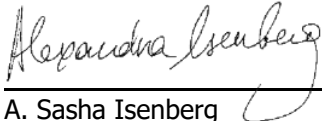
Consultant Information:

HRP Associates, Inc.
197 Scott Swamp Road
Farmington, CT 06032
Phone: 860-674-9570
E-mail: david.feinson@hrpassociates.com
Project Number: DEC1004.OM

Client Information:

New York State Department of
Environmental Conservation
625 Broadway
Albany, NY 12233

Report Date: 2/7/2022

Report Author: 
A. Sasha Isenberg
Senior Project Scientist

Project Manager: 
David J. Feinson
Project Manager

1.0 INTRODUCTION

HRP Associates, Inc. (HRP) has been contracted by the New York State Department of Environmental Conservation (NYSDEC) for Site management tasks under Standby Engineering Contract D009808. Under this contract, on-going Site management was assigned to HRP for the Active Industrial Uniform Superfund Site, NYSDEC Site No. 152125, located at 63 West Merrick Road, Lindenhurst, New York (herein referred to as the "Site"). The Site location is depicted on **Figure 1**. The Site is currently listed on the New York State Registry of Inactive Hazardous Waste Sites as a Class 2 site. This designation is for sites at which the disposal of hazardous waste has been confirmed and the presence of such hazardous waste or its components or breakdown products represents a significant threat to public health or the environment; or sites at which hazardous waste disposal has not been confirmed, but the site has been listed on the Federal National Priorities List (NPL). The United States Environmental Protection Agency (USEPA) oversaw the operations and maintenance (O&M) and Site management from 2001 to 2012. NYSDEC assumed responsibility for Site management in 2012. The on-going Site management was assigned to HRP in April 2020. This work assignment (WA) includes the following tasks:

- Task 1 – Scoping
- Task 2 – Site Management Plan
- Task 3 – Operation and Maintenance
- Task 4 – Monitoring and Reporting
- Task 5 – Periodic Review and Report
- Task 6 – Remedial System Optimization

This quarterly Operations and Maintenance (O&M) Report summarizes the O&M and monitoring activities completed during the fourth quarter of 2021 (October through December 2021). This report provides a description of the work performed throughout the reporting period, a discussion of the data obtained, and documents the relevant performance monitoring.

2.0 **SITE BACKGROUND**

2.1 **Site Location and Description**

The Active Industrial Uniform Site is a 0.5-acre parcel of land located at 63 West Merrick Road (a.k.a. West Montauk Highway, or State Route 27A). The Site is accessed via a driveway from Tompkins Lane. A fence with locked gate completely surrounds the property. The Site location is shown on **Figure 1**.

The following features are present at the Site:

- 35'x35' treatment shed;
- The remnants of two concrete floor slabs (east and northwest) where one-story concrete block buildings were formerly located (both buildings were demolished in February 1995);
- A paved parking area.

Site features are depicted on **Figure 2**, and general Site area features are shown on **Figure 3**.

2.2 **Site Geology and Hydrogeology**

According to the surficial materials map of New York, the surficial geology of the Site consists of outwash sand and gravel, defined as coarse to fine gravel with sand with variable thickness (2-20 meters). Based on reported observations from shallow hand auger soil vapor points installed during the 2007/2008 soil vapor evaluation, the upper ten feet of overburden in the vicinity of the Site is typified by loose medium to coarse sand. The ground surface and uppermost overburden varies from disturbed native sand to topsoil, silty sand, or asphalt.

Depth to groundwater ranged from 1.00 (in MW-109) to 9.57 (in RW-1) feet below ground surface, as measured during the October 2021 groundwater sampling event. Groundwater flows predominantly to the south, as shown on Figure 4, *Inferred Groundwater Contour Map*.

2.3 **Background and Remedial History**

This facility operated as a dry cleaner and laundry between 1970 and 1987. Historically, there were two dry cleaning solvent storage areas at the Site: an underground solvent storage tank located on the northwest corner of the property that was removed in 1985, and two above ground solvent storage tanks that were located on a concrete pad near the southwest corner of the property and were removed in October of 1987.

Previous investigations revealed two areas of historical releases of tetrachloroethene (PCE) that have impacted the soil and groundwater at the Site. Remediation at the Site achieved soil cleanup objectives for commercial use and is considered complete. Residual contamination in the soil and groundwater is being managed under a Site Management Plan. A Groundwater Extraction & Treatment (GWE&T) System was installed to control a chlorinated solvent groundwater contamination plume emanating from the Site.

The GWE&T system operated between 2001 and 2018. The GWE&T system was shut down in 2018 under NYSDEC approval. The air stripping towers were decommissioned in late 2020 and removed from the Site in 2021.

2.4 Site Cleanup Objectives

The remedial goals for the Site have been established through the remedy selection process and documented in the Record of Decision (ROD), dated March 26, 1997. According to the ROD, the "overall goal is to meet all appropriate Standards, Criteria, and Guidance (SCGs) and to be protective of human health and the environment". The site-specific goals are presented below:

- Reduce, control, or eliminate to the extent practicable the contamination present within the soils on the Site;
- Eliminate the threat to surface waters by remediating to the extent practicable contaminated groundwater;
- Eliminate the potential for direct human or animal contact with the contaminated soils on the Site;
- Mitigate the impacts of contaminated groundwater to the environment;
- Prevent, to the extent possible, migration of contaminants;
- Provide for attainment of SCGs for groundwater quality at the limits of the area of concern, to the extent practicable; and
- Reduce the threat to homes from high groundwater.

3.0 OPERATIONS AND MAINTENANCE PROGRAM

The operations and maintenance program for the Active Industrial Uniform Site is presented below.

- Periodic groundwater monitoring, including reporting sampling data to NYSDEC;
- Inventory/inspections/maintenance of all groundwater monitoring wells;
- The GWE&T system was shut down on November 30, 2018, under NYSDEC approval. The air stripping towers were decommissioned in late 2020 and removed in 2021. As such, only building maintenance, including routine fire/safety inspection of the treatment plant, is performed on a monthly basis;
- Site maintenance, including (but not limited to) structures and Site grounds upkeep and maintenance (the length of the grass should not exceed six inches per Town ordinance) conducted on a monthly basis or as needed during the summer.

HRP performed the groundwater sampling at the Site as well as the Site maintenance activities. Summary reports prepared during each visit are included in **Appendix A**. Below is a summary of activities performed during the fourth quarter of 2021.

3.1 Groundwater Extraction and Treatment System Operations and Maintenance

The GWE&T consists of two 4-inch diameter extraction wells, RW-1 and RW-2, designed to pump groundwater to the treatment system housed in the system remediation building. RW-1 is located in the southwestern portion of the Site. RW-2 is located off-site, approximately 1,500 feet southwest of the Site (see **Figures 2 and 3**).

The GWE&T system was shut down in 2018 under NYSDEC approval. The air stripping towers were decommissioned in late 2020 and removed from the Site in 2021. Prior to 2020, an inspection of RW-2 indicated that the screen had collapsed. The previous consultants' attempts at redevelopment of RW-2 were not successful.

3.2 Site Maintenance Activities

Routine Maintenance

On October 25, November 23, and December 20, 2021, HRP performed routine maintenance, and grounds-keeping activities, which included mowing the lawn, raking leaves, and cutting brush growing into the sidewalk on West Montauk Highway. Monthly inspections of fire extinguisher and emergency lighting and exit sign tests were performed on the same dates. Emergency lighting passed the monthly tests. No issues were identified.

Non-Routine Maintenance

Four on-site drums were removed from the Site on November 15, 2021. The drums were shipped as non-hazardous waste. A waste manifest is included in **Appendix A**.

A backflow prevention device annual test was performed by Lund Valve Testing on November 15, 2021. The device passed the test. A report was submitted to the Suffolk County Water Authority (SCWA).

4.0 MONITORING PROGRAM

The monitoring program for the Active Industrial Uniform Superfund Site includes periodic sampling of select groundwater monitoring wells and two extraction wells (see Table 1 below), including 11 on-site monitoring wells (MW-101 through MW-108, MW-4D, MW-5S, and RW-1) and four off-site monitoring wells (MW-109, MW-111, MW-2S, and RW-2). The locations of the wells are depicted on **Figures 2** and **3**.

Table 1: Groundwater Sampling Requirements and Schedule

Sampling Location	Sampling Frequency			Analytical Parameters
	Monthly	Quarterly	Semi-Annual	VOC (EPA Method 8260)
MW-101			X	X
MW-102			X	X
MW-103		X	X	X
MW-104		X	X	X
MW-105		X	X	X
MW-106		X	X	X
MW-107		X	X	X
MW-108			X	X
MW-109			X	X
MW-111			X	X
MW-2S		X	X	X
MW-4D		X	X	X
MW-5S		X	X	X
RW-1		X	X	X
RW-2		X	X	X

4.1 Groundwater Sampling

On October 25, 2021, HRP conducted the quarterly groundwater sampling event. Groundwater samples were collected from each monitoring well and submitted to a State-certified laboratory, Eurofins/TestAmerica, and analyzed for VOCs via the EPA 8260 method and metals via EPA 6010 method. The analytical results are summarized in Tables 2 and 3 below.

Table 2: Target VOCs in Groundwater

Monitoring Well ID and Location	Site-Specific VOCs Concentrations, ug/L							
	PCE		TCE		Cis-1,2-DCE		Vinyl Chloride	
Sampling Period	2021 Q3	2021 Q4	2021 Q3	2021 Q4	2021 Q3	2021 Q4	2021 Q3	2021 Q4
MW-4D (on-site)	2.0	24	1.1	39	6.9	35	4.7	22
MW-5S (on-site)	<1	1.5	<1	<1	<1	<1	<1	<1
MW-101 (on-site)	0.9	NS	0.71	NS	<1	NS	<1	NS
MW-102 (on-site)	1.7	NS	0.42	NS	<1	NS	<1	NS
MW-103 (on-site)	4.5	3.2	0.58	0.84	<1	<1	<1	<1
MW-104 (on-site)	43	74	6.8	7.5	0.45	2.2	<1	<1
MW-105 (on-site)	7.8	3.1	3.9	<1	370	1.9	22	<1



Monitoring Well ID and Location	Site-Specific VOCs Concentrations, ug/L							
	PCE		TCE		Cis-1,2-DCE		Vinyl Chloride	
Sampling Period	2021 Q3	2021 Q4	2021 Q3	2021 Q4	2021 Q3	2021 Q4	2021 Q3	2021 Q4
MW-105 Dup (MW-B)	8.4	2.8	3.8	<1	360	2.0	22	0.19
MW-106 (on-site)	11	12	5.5	3.7	7.8	12	<1	0.67
MW-107 (on-site)	4.4	3.5	1.1	0.56	0.43	0.38	<1	<1
MW-108 (on-site)	3.5	NS	<1	NS	0.33	NS	<1	NS
RW-1 (on-site)	<1	<1	<1	<1	<1	<1	<1	<1
MW-2S (off-site)	1.1	3.8	<1	0.86	9.4	7.5	1.2	<1
MW-109 (off-site)	<1	NS	0.63	NS	1.1	NS	<1	NS
MW-111 (off-site)	<1	NS	<1	NS	<1	NS	<1	NS
RW-2 (off-site)	<1	<1	<1	<1	<1	0.65	<1	<1
RW-2 Dup (MW-A)	<1	<1	<1	<1	<1	0.6	<1	<1
Class GA Groundwater Standard, µg/L	5		5		5		2	

Notes: 1 Parameter reported at a concentration greater than applicable regulatory standard/criterion
ND = not detected; NS = not sampled; µg/L = microgram per liter

Table 2 summarizes the on-site and off-site concentrations of the site-specific contaminants of concern (COCs), which include PCE and associated degradation products (trichloroethylene [TCE], cis-1,2-dichloroethylene [cis-1,2-DCE], and vinyl chloride). The results were compared to the previous, third quarter of 2021, findings. The previous data is included in the table for comparison purposes. Charts showing the variations of PCE, TCE, cis-1,2-DCE, and vinyl chloride in the monitoring wells are provided in **Appendix B**. Laboratory reports are provided directly to NYSDEC by the contracted laboratory.

The findings of the sampling are discussed below.

- **MW-4D:** The monitoring well is located in the southwestern portion of the Site and downgradient of the historical dry-cleaning activities. The well is screened at 60 to 70 feet below grade (fbg). PCE, TCE, Cis-1,2-DCE and vinyl chloride were detected in this monitoring well at concentrations exceeding the Class GA Groundwater Standards.
- **MW-5S:** The monitoring well is located in the western portion of the Site and screened at 14 to 24 fbg. None of the contaminants of concern were detected above the laboratory reporting limits, except for PCE, which was detected below the applicable standards.
- **MW-101:** The monitoring well is located on the northeastern portion of the Site and screened at 5-15 feet bgs. The well gets tested semi-annually and was not tested during the October sampling event.
- **MW-102:** The monitoring well is located on the north-central portion of the Site and screened at 5-15 feet bgs. The well gets tested semi-annually and was not tested during the October sampling event.
- **MW-103:** The monitoring well is located in the northern portion of the Site and screened at 5 to 15 fbg. PCE and TCE were detected at concentrations below the applicable Class GA

Standards. Cis-1,2-DCE and vinyl chloride were not detected above the laboratory reporting limit.

- MW-104: The monitoring well is located on the western portion of the Site and screened at 5 to 15 fbg. PCE and TCE were detected in exceedance of the Class GA Standards. Cis-1,2-DCE was detected at a concentration below the Class GA Standards. Vinyl chloride was not detected above the laboratory reporting limit.
- MW-105: The monitoring well is located near the southwestern corner of the treatment building and screened at 5 to 15 fbg. PCE and cis-1,2-DCE were detected below the Class GA Standards. TCE and vinyl chloride were not detected above the laboratory reporting limit. Sample MW-B was collected as a duplicate of sample MW-105. Detected concentrations of PCE, TCE, cis-1,2-DCE, and vinyl chloride were similar between the two samples.
- MW-106: The monitoring well is located in the southeastern corner of the Site and screened at 5 to 15 fbg. PCE and cis-1,2-DCE were detected in exceedance of the Class GA Standards. TCE and vinyl chloride were detected at concentrations below the Class GA Standards.
- MW-107: The monitoring well is located in the southern portion of the Site and screened at 5 to 15 fbg. PCE, TCE, and cis-1,2-DCE were detected at concentrations below the Class GA Standards. Vinyl chloride was not detected above the laboratory reporting limits.
- MW-108: The monitoring well is located in the southwestern corner of the Site and screened at 5 to 15 fbg. The well gets tested semi-annually and was not tested during the October sampling event.
- RW-1: The 4-inch extraction well is located in the southwestern portion of the Site and screened at 10-35 feet bgs. None of the contaminants of concern were detected above the laboratory reporting limits.
- MW-2S: The monitoring well is located on Tompkins Street, approximately 200 feet to the south of the Site and screened at 12 to 22 fbg. Cis-1,2-DCE was detected in exceedance of the Class GA Standards. PCE and TCE were detected below the Class GA Standards. Vinyl chloride was not detected above the laboratory reporting limit.
- MW-109: The monitoring well is located on Orchard Street, approximately 1,700 feet to the southwest of the Site and screened at 25-35 feet bgs. The well gets tested semi-annually and was not tested during the October sampling event.
- MW-111: The monitoring well is located on Lane Street, approximately 500 feet to the southwest of the Site, and screened at 25-35 feet bgs. The well gets tested semi-annually and was not tested during the October sampling event.
- RW-2: The 4-inch extraction well is located on Orchard Street, approximately 1,500 feet to the southwest of the Site, and screened at 12-37 feet bgs. Sample MW-A was collected as a duplicate of sample RW-2. PCE, TCE, and vinyl chloride were not detected above the laboratory reporting limits in either of the sample. Cis-1,2-DCE was detected below the Class GA Standards.

In addition, groundwater from recovery wells RW-1 and RW-2 was analyzed for metals. The results are presented in Table 3 below:

Table 3: Metals in Groundwater

Sample Name:			RW-1	RW-2	RW-2 Dup	RW-1	RW-2	RW-2 Dup
Analytes	Unit	Class GA Criteria	Sampled 7/27-28/2021			Sampled 10/25/2021		
			Aluminum, Total	ug/l	NE	165	170	163
Antimony	ug/l	3	(< 20.0)	(< 20.0)	(< 20.0)	< 20.0	< 20.0	< 20.0
Arsenic	ug/l	25	< 15.0	< 15.0	< 15.0	< 15.0	< 15.0	< 15.0
Barium	ug/l	1,000	21.4	14.3	13.2	< 200	< 200	< 200
Beryllium	ug/l	3	< 2.0	< 2.0	< 2.0	< 2.0	< 2.0	< 2.0
Cadmium	ug/l	5	< 4.0	< 4.0	< 4.0	< 4.0	< 4.0	< 4.0
Calcium	ug/l	NE	31,100	21,500	20,200	27,500	31,100	32,800
Chromium, Total	ug/l	50	< 10.0	< 10.0	< 10.0	< 10.0	< 10.0	< 10.0
Cobalt	ug/l	NE	< 50.0	< 50.0	< 50.0	< 50.0	< 50.0	< 50.0
Copper	ug/l	200	< 25.0	12.2	12.2	< 25.0	11.1	11.7
Iron	ug/l	300	399	4,080	3,830	286	2,550	2,680
Lead	ug/l	25	< 10.0	5.4	4.6	3.1	3.5	2.8
Magnesium	ug/l	35,000	5,120	15,500	14,700	4,520	22,300	23,400
Manganese	ug/l	300	2,250	101	95.3	1,910	119	125
Mercury	ug/l	0.7	< 0.20	< 0.20	< 0.20	< 0.20	< 0.20	< 0.20
Nickel	ug/l	100	< 40.0	< 40.0	< 40.0	< 40.0	< 40.0	< 40.0
Potassium, Total	ug/l	NE	2,950	10,100	9,560	2,390	11,100	11,700
Selenium	ug/l	10	< 20.0	< 20.0	< 20.0	< 20.0	< 20.0	< 20.0
Silver	ug/l	50	< 10.0	< 10.0	< 10.0	< 10.0	< 10.0	< 10.0
Sodium, Total	ug/l	20,000	46,400	184,000	174,000	33,500	219,000	231,000
Thallium	ug/l	0.5	< 20.0	< 20.0	< 20.0	< 20.0	< 20.0	< 20.0
Vanadium	ug/l	NE	< 50.0	< 50.0	< 50.0	< 50.0	< 50.0	< 50.0
Zinc	ug/l	2,000	3.3	20.3	20.3	< 30.0	14.1	16.5

In addition to the constituents listed in the tables, the following contaminants were detected in the groundwater samples at concentrations below the Class GA Standards:

- **MW-4D:**
Acetone detected at 9.9 µg/L (Class GA Standards = 50 µg/L);
1,1-Dichloroethane detected at 0.50 µg/L (Class GA Standards = 5 µg/L);
Methyl tert-butyl ether detected at 0.46 µg/L (Class GA Standards = 10 µg/L);
Trans-1,2-dichloroethene detected at 0.84 µg/L (Class GA Standards = 5 µg/L).



5.0 MAINTENANCE ISSUES AND RECOMMENDED SOLUTIONS

No maintenance issues were identified during the fourth quarter of 2021.

6.0 FUTURE ACTIVITIES

Future maintenance and monitoring activities at the Site include the following:

- Routine monthly maintenance activities will continue; and
- Quarterly groundwater sampling is scheduled to be completed in the first quarter of 2022.

7.0 PROGRESS TOWARD CLEANUP OBJECTIVES

Based on review of O&M field notes and laboratory analysis of samples collected from the groundwater well network, additional monitoring is recommended to monitor the natural attenuation of the dissolved-phase chlorinated solvents detected in groundwater.

FIGURES



Copyright © 2013 National Geographic Society, I-cubed

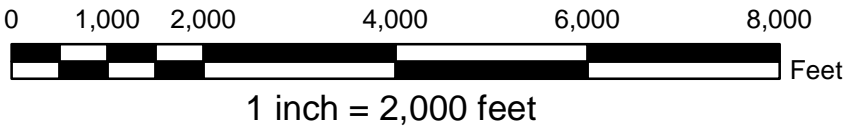





Figure 1
Site Location
63 West Montauk Highway
Lindenhurst, New York
NYSDEC Site No. 152125
HRP # DEC1004.OM
Scale 1" = 2,000'

USGS Quadrangle Information
 Quad ID: 40073-F3
 Name: Bay Shore West, New York
 Date Rev: 1978
 Date Pub: 1979

HRP
 MOVE YOUR ENVIRONMENT FORWARD
 ONE FAIRCHILD SQUARE
 SUITE 110
 CLIFTON PARK, NY 12065
 (518) 877-7101
 HRPASSOCIATES.COM

Path: S:\Data\NINYDEC - NEW YORK STATE DEPARTMENT OF ENVIRONMENTAL CONSERVATION\BABYLON\63 WEST MERRICK ROAD\DEC1004OM\GIS\Figure 2 - 63 West Montauk.mxd

Legend

-  Groundwater Recovery Well
-  Groundwater Monitoring Well
-  Approximate Property Line



MOVE YOUR ENVIRONMENT FORWARD

ONE FAIRCHILD SQUARE
SUITE 110
CLIFTON PARK, NY 12065
(518) 877-7101
HRPASSOCIATES.COM

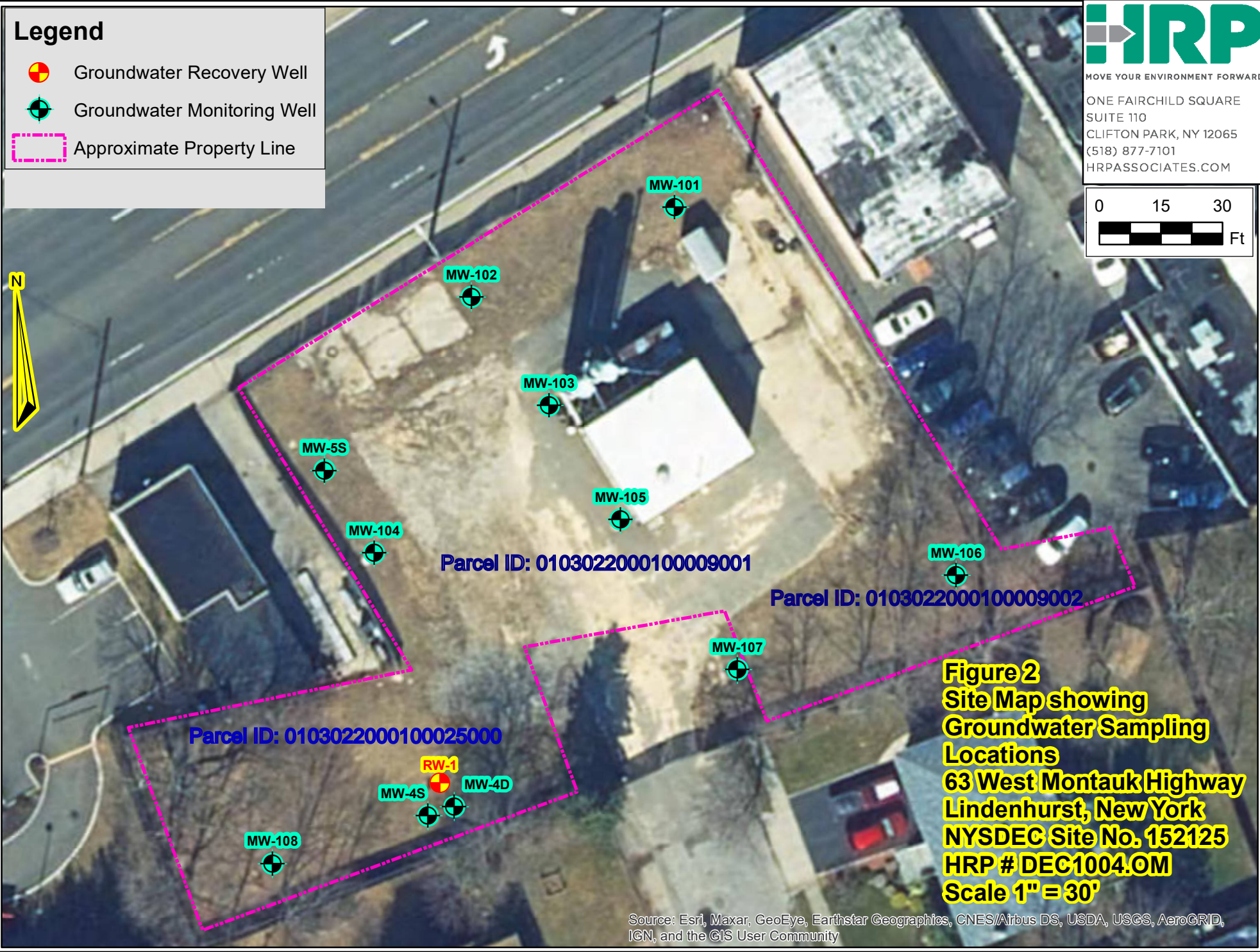


Figure 2
Site Map showing
Groundwater Sampling
Locations
63 West Montauk Highway
Lindenhurst, New York
NYSDEC Site No. 152125
HRP # DEC1004.OM
Scale 1" = 30'

Source: Esri, Maxar, GeoEye, Earthstar Geographics, CNES/Airbus DS, USDA, USGS, AeroGRID, IGN, and the GIS User Community

Path: S:\Data\NYSDEC - NEW YORK STATE DEPARTMENT OF ENVIRONMENTAL CONSERVATION\BABLON63 WEST MERRICK ROAD\DEC1004\OM\GIS\Figure 3 - 63 West Montauk.mxd



Legend

- Groundwater Recovery Well
- Groundwater Monitoring Well
- Approximate Property Line

Source: Esri, Maxar, GeoEye, Earthstar Geographics, CNES/Airbus DS, USDA, USGS, AeroGRID, IGN, and the GIS User Community

ONE FAIRCHILD SQUARE
SUITE 110
CLIFTON PARK, NY 12065
(518) 877-7101
HRPASSOCIATES.COM

**Site and Surrounding Area:
Groundwater Sampling Locations**

**63 West Montauk Highway
Lindenhurst, New York
NYSDEC Site No. 152125**

ASI
DESIGNED BY:

BOB
DRAWN BY:

DJF
REVIEWED BY:

11X17
SHEET SIZE:

08/04/2020
DATE:

DEC1004.OM
PROJECT NUMBER:

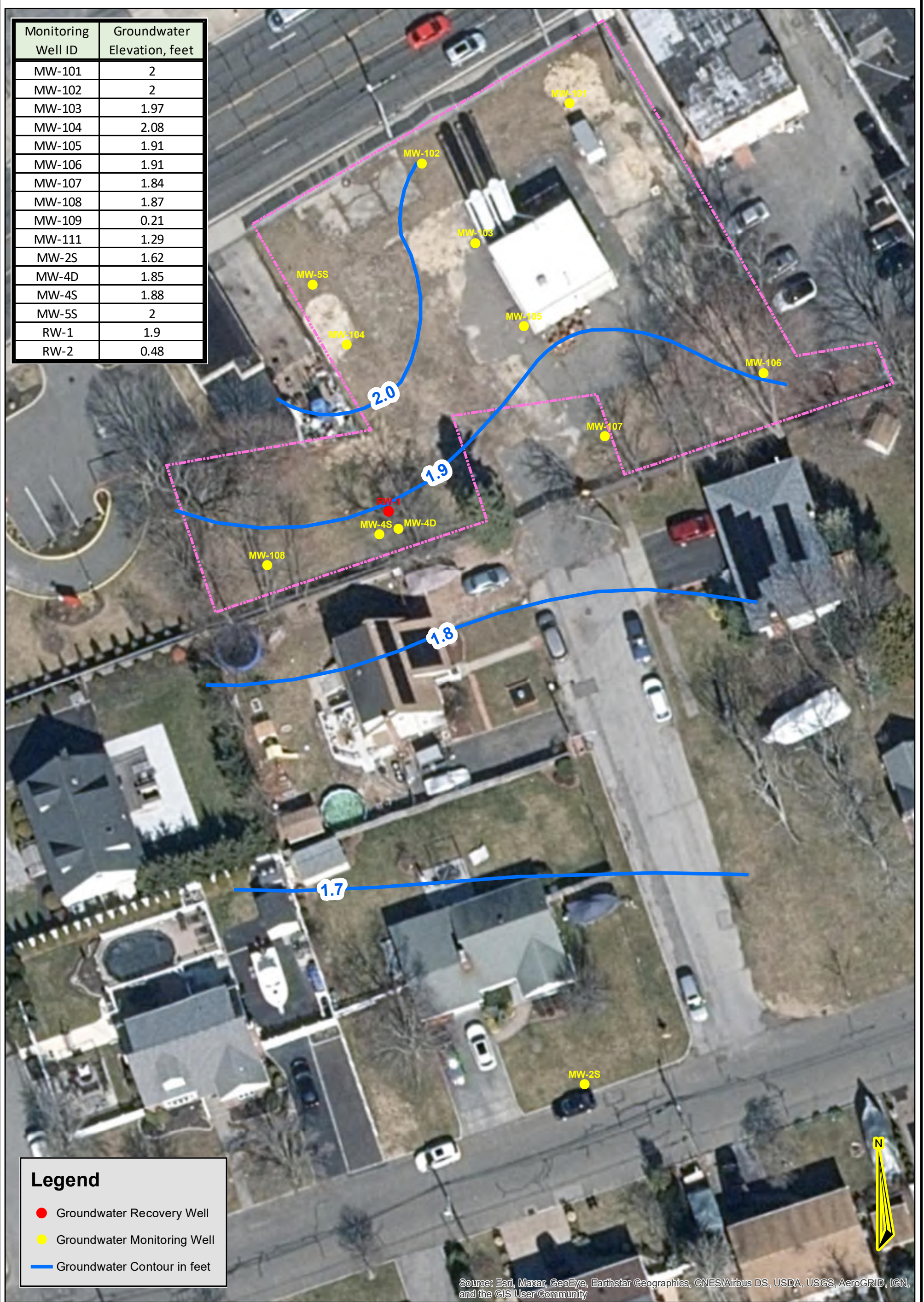
North

1 in = 150 ft

FIGURE

3

Monitoring Well ID	Groundwater Elevation, feet
MW-101	2
MW-102	2
MW-103	1.97
MW-104	2.08
MW-105	1.91
MW-106	1.91
MW-107	1.84
MW-108	1.87
MW-109	0.21
MW-111	1.29
MW-2S	1.62
MW-4D	1.85
MW-4S	1.88
MW-5S	2
RW-1	1.9
RW-2	0.48



Source: Esri, Maxar, GeoEye, Earthstar Geographics, CNES/Airbus DS, USDA, USGS, AeroGRID, IGN, and the GIS User Community

Legend

- Groundwater Recovery Well
- Groundwater Monitoring Well
- Groundwater Contour in feet

HRP
MOVE YOUR ENVIRONMENT FORWARD

ONE FAIRCHILD SQUARE
SUITE 110
CLIFTON PARK, NY 12065
(518) 877-7101
HRPASSOCIATES.COM

**Inferred Groundwater Contour Map
October 2021**

**63 West Montauk Highway
Lindenhurst, New York
NYSDEC Site No. 152125**

ASI
DESIGNED BY:

BOB
DRAWN BY:

DJF
REVIEWED BY:

11X17
SHEET SIZE:

02/01/2022
DATE:

DEC1004.OM
PROJECT NUMBER:

North

1 in = 30 ft

**FIGURE
4**

APPENDIX A

Operation and Maintenance Reports

Fire Safety Inspection Log
 Active Industrial Uniform Site
 NYSDEC Site No. 152125
 63 West Merrick Road, Lindenhurst, NY

Monthly Fire Safety Inspection Items			
Item	Description	Result	
1	Exit signs internally or externally illuminated	<u>Yes</u>	No
2	Smoke alarms tested and functioning	Yes	<u>No</u>
3	Water leaks/water damage observed inside building	<u>Yes</u>	No
4	Fire extinguishers within expiration or inspected annually	<u>Yes</u>	No
5	All fire extinguishers present	Yes	<u>No</u>
6	Electrical Breaker Panel Issues	<u>Yes</u>	No
7	Covers present on all junction boxes, electrical switches, and outlets	Yes	<u>No</u>
8	Any evidence of pests present inside building (rodents, insects, etc.)	<u>Yes</u>	No
9	Emergency lighting tested and functioning		

Periodic System Testing and Inspection				
Item	Description	Frequency	Date Last Performed	Date Due
10	Sprinkler system testing	Annual		
11	Battery powered emergency lighting tested	Annual		
12	Fire Extinguishers annual inspection	Annual		
13	Emergency Lighting Testing	Monthly	10-25-21	

Inspected By: *Dave Adam*
 Inspection Date: *10-25-21*

Other Items Noted:

Fire Safety Inspection Log
 Active Industrial Uniform Site
 NYSDEC Site No. 152125
 63 West Merrick Road, Lindenhurst, NY

Monthly Fire Safety Inspection Items			
Item	Description	Result	
1	Exit signs internally or externally illuminated	Yes	No
2	Smoke alarms tested and functioning	Yes	No
3	Water leaks/water damage observed inside building	Yes	No
4	Fire extinguishers within expiration or inspected annually	Yes	No
5	All fire extinguishers present	Yes	No
6	Electrical Breaker Panel Issues	Yes	No
7	Covers present on all junction boxes, electrical switches, and outlets	Yes	No
8	Any evidence of pests present inside building (rodents, insects, etc.)	Yes	No
9	Emergency lighting tested and functioning	Yes	No

Periodic System Testing and Inspection				
Item	Description	Frequency	Date Last Performed	Date Due
10	Sprinkler system testing	Annual		
11	Battery powered emergency lighting tested	Annual		
12	Fire Extinguishers annual inspection	Annual		
13	Emergency Lighting Testing	Monthly	11-23-21	

Inspected By: *Dave Adam*

Inspection Date: *11-23-21*

Other Items Noted:

Fire Safety Inspection Log
 Active Industrial Uniform Site
 NYSDEC Site No. 152125
 63 West Merrick Road, Lindenhurst, NY

Monthly Fire Safety Inspection Items			
Item	Description	Result	
1	Exit signs internally or externally illuminated	Yes	No
2	Smoke alarms tested and functioning	Yes	No
3	Water leaks/water damage observed inside building	Yes	No
4	Fire extinguishers within expiration or inspected annually	Yes	No
5	All fire extinguishers present	Yes	No
6	Electrical Breaker Panel Issues	Yes	No
7	Covers present on all junction boxes, electrical switches, and outlets	Yes	No
8	Any evidence of pests present inside building (rodents, insects, etc.)	Yes	No
9	Emergency lighting tested and functioning	Yes	No

Periodic System Testing and Inspection				
Item	Description	Frequency	Date Last Performed	Date Due
10	Sprinkler system testing	Annual		
11	Battery powered emergency lighting tested	Annual		
12	Fire Extinguishers annual inspection	Annual		
13	Emergency Lighting Testing	Monthly	12-20-21	

Inspected By: Dave Adam

Inspection Date: 12-20-21

Other Items Noted:

HRP Associates, Inc.
 197 Scott Swamp Rd.
 Farmington, CT 06032
 (860) 674-9570

Monitor Well Data Sheet

Well ID: MW-2s

Page 1 of 1

Site Background Information

Site Location:	63 West Merrick Rd, Lindenhurst, NY	Sampling Dates:	10/25/21
Job Number:	DEC1004.OM	Field Team Leader:	
Weather:	P. Sunny 69°F	Team Personnel:	DJA, CJS, KGS

Ground Water Elevation Data

Date	Time	Sampler Name	Equipment Model		Depth to Water (ft)		Depth to Bottom (ft)	
			Solinst-101	corr. factor	uncorrected	corrected	uncorrected	corrected
10/25/21	10:04	KGS		0		5.50		18.50

Measurement Point: 2" pvc HW

Well Condition (circle one)

General Condition	Visible Well ID	Well Cap Present	Well Plumbness	Lock
Good	Yes	Yes	Good	Yes
Concrete Collar	Ponded Water	Comments: BHS		
Good	No			

Well Purging Data

Date	Time						Sampler Initials	Instrument Calibration Date
	Equipment Set-up		Purging		Sample Collection			
	Start	Finish	Start	Finish	Start	Finish		
10/25/21	12:02	12:03	12:03	12:46	12:46	12:47	KGS	10/22/21

Instrument Mfg & Model

pH	YSI 600XL-M / YSI 556 - Serial # 0402866AA
Temp.	
Sp. Cond.	
ORP	
DO	
Turbidity	HF Scientific DRT-15CE - Serial # N21-4

Time	Initial Water Depth (ft):		pH (s.u.)	Temp (°C)	Sp Con (uS)	ORP (mV)	DO (mg/l)	Turbidity (ntu)
	Water Depth (ft)	Flow Rate (ml/min)						
	5.50							
	Time: 12:02							
12:05	5.51	240	6.62	17.31	396	-58.8	2.85	6.74
12:10	5.52		6.01	16.93	423	-34.4	0.51	2.33
12:15	5.52		5.88	16.86	423	-23.4	0.41	1.93
12:20	5.52		5.83	16.73	428	-16.3	0.34	1.77
12:25	5.52		5.79	16.64	432	-10.3	0.30	1.93
12:30	5.52		5.77	16.57	448	-5.8	0.25	1.69
12:35	5.52		5.77	16.54	464	-1.4	0.24	2.12
12:40	5.52		5.77	16.54	465	1.0	0.22	1.67
12:45	5.52		5.76	16.47	470	4.2	0.21	1.73
Req. Limits for Last 3 Readings			+/- 0.1	3%	3%	+/- 10 mv	10% > 0.5	10% > 5

Pump Mfg & Model	Color	Odor	Purge Vol (ml)	Sample Depth (ft.)
peristaltic pump	clear		10,320	13.50

Sample Containers

Type & No.	Volume	Preservative	Type & No.	Volume	Preservative
3 vials	3 x 40mL	HCl			

HRP Associates, Inc.
 197 Scott Swamp Rd.
 Farmington, CT 06032
 (860) 674-9570

Monitor Well Data Sheet

Well ID: MW-4d

Page 1 of 2

Site Background Information

Site Location:	63 West Merrick Rd, Lindenhurst, NY	Sampling Dates:	10/25/21
Job Number:	DEC1004.OM	Field Team Leader:	
Weather:	Overcast 66°F	Team Personnel:	DJA, CJK, KG

Ground Water Elevation Data

Date	Time	Sampler Name	Equipment Model		Depth to Water (ft)		Depth to Bottom (ft)	
			Solinst-101	corr. factor	uncorrected	corrected	uncorrected	corrected
10/25/21	7:33	KG		0		6.41		67.41

Measurement Point: 4" pvc HW

Well Condition (circle one)

General Condition	Visible Well ID	Well Cap Present	Well Plumbness	Lock
Good	No	Yes	Good	NO
Concrete Collar	Ponded Water	Comments: No bits		
Good	No			

Well Purging Data

Date	Time						Sampler Initials	Instrument Calibration Date
	Equipment Set-up		Purging		Sample Collection			
	Start	Finish	Start	Finish	Start	Finish		
10/25/21	7:33	7:37	7:37	8:56	8:56	8:57	KG	10/22/24

Instrument Mfg & Model

pH	YSI 600XL-M / YSI 556 - Serial # 042286AB
Temp.	
Sp. Cond.	
ORP	
DO	
Turbidity	HF Scientific DRT-15CE - Serial # HRP-4

Time	Water Depth (ft)	Flow Rate (ml/min)	pH (s.u.)	Temp (°C)	Sp Con (uS)	ORP (mV)	DO (mg/l)	Turbidity (ntu)
	Initial Water Depth (ft): 6.41			Time: 7:33				
7:40	6.42	130	6.64	16.31	311	24.4	2.00	20.4
7:45	6.43		6.57	16.15	296	-73.4	0.81	22.9
7:50	6.44		6.55	16.14	295	-105.1	0.63	19.67
7:55	6.44		6.52	16.08	296	-122.2	0.55	21.1
8:00	6.44		6.49	16.06	295	-133.4	0.49	19.17
8:05	6.44		6.48	16.05	293	-148.5	0.45	19.99
8:10	6.44		6.48	16.02	292	-158.7	0.42	18.56
8:15	6.44		6.47	16.01	291	-167.7	0.40	16.76
8:20	6.44		6.47	16.01	291	-181.1	0.38	18.30

Req. Limits for Last 3 Readings +/- 0.1 3% 3% +/- 10 mv 10% > 0.5 10% > 5

Pump Mfg & Model	Color	Odor	Purge Vol (ml)	Sample Depth (ft.)
peristaltic pump	clear	yes!	147.70	62.41

Sample Containers

Type & No.	Volume	Preservative	Type & No.	Volume	Preservative
3 vials	3 x 40mL	HCl			

HRP Associates, Inc.
 197 Scott Swamp Rd.
 Farmington, CT 06032
 (860) 674-9570

Monitor Well Data Sheet

Well ID: MW-5s

Page 1 of 1

Site Background Information

Site Location:	63 West Merrick Rd, Lindenhurst, NY	Sampling Dates:	10-25-21
Job Number:	DEC1004.OM	Field Team Leader:	-
Weather:	M. Sunny, 70°F	Team Personnel:	KG, CIL

Ground Water Elevation Data

Date	Time	Sampler Name	Equipment Model	Depth to Water (ft)		Depth to Bottom (ft)	
				uncorrected	corrected	uncorrected	corrected
10-25-21	11:00	CIL	Solinst-101 corr. factor 0	-	6.33	-	23.58

Measurement Point: 2" pvc.HW

Well Condition (circle one)

General Condition	Visible Well ID	Well Cap Present	Well Plumbness	Lock
Good	yes	yes	Good	yes
Concrete Collar	Ponded Water	Comments:		
Good	No			

Well Purging Data

Date	Time						Sampler Initials	Instrument Calibration Date
	Equipment Set-up		Purging		Sample Collection			
	Start	Finish	Start	Finish	Start	Finish		
10-25-21	10:55	11:03	11:03	11:32	11:32	11:33	PJL	10-22-21

Instrument Mfg & Model

pH	YSI 600XL-M / YSI 556 Serial # 19A01
Temp.	
Sp. Cond.	
ORP	
DO	
Turbidity	HF Scientific DRT-15CE - Serial # HRP-7

Time	Water Depth (ft)	Flow Rate (ml/min)	pH (s.u.)	Temp (°C)	Sp Con (uS)	ORP (mV)	DO (mg/l)	Turbidity (ntu)
	Initial Water Depth (ft):	6.33		Time:	11:02			
11:06	6.33	120	6.15	19.42	325	81.1	0.55	2.41
11:11	6.33		5.85	19.25	320	97.7	0.21	1.51
11:16	6.33		5.80	19.13	319	104.2	0.15	1.01
11:21	6.33		5.79	19.11	320	107.5	0.14	0.98
11:26	6.33	✓	5.76	19.09	324	110.0	0.14	1.41
11:31	6.33	Y	5.75	19.04	324	110.6	0.13	0.95

Req. Limits for Last 3 Readings +/- 0.1 3% 3% +/- 10 mv 10% > 0.5 10% > 5

Pump Mfg & Model	Color	Odor	Purge Vol (ml)	Sample Depth (ft.)
peristaltic pump	clear	-	3480	18.58

Sample Containers

Type & No.	Volume	Preservative	Type & No.	Volume	Preservative
3 vials	3 x 40mL	HCl			

HRP Associates, Inc.
 197 Scott Swamp Rd.
 Farmington, CT 06032
 (860) 674-9570

Monitor Well Data Sheet

Well ID: MW-103

Page 1 of 1

Site Background Information

Site Location:	63 West Merrick Rd, Lindenhurst, NY	Sampling Dates:	10-25-21
Job Number:	DEC1004.OM	Field Team Leader:	—
Weather:	M. Cloudy, 66°F	Team Personnel:	KG, CJL

Ground Water Elevation Data

Date	Time	Sampler Name	Equipment Model	Depth to Water (ft)		Depth to Bottom (ft)	
				uncorrected	corrected	uncorrected	corrected
10-25-21	9:05	CJL	Solinst-101 corr. factor 0	—	6.60	—	12.76

Measurement Point: 2" pvc HW

Well Condition (circle one)

General Condition	Visible Well ID	Well Cap Present	Well Plumbness	Lock
Good	yes	yes	Good	yes
Concrete Collar	Ponded Water	Comments: 8HS		
Good	NO			

Well Purging Data

Date	Time						Sampler Initials	Instrument Calibration Date
	Equipment Set-up		Purging		Sample Collection			
	Start	Finish	Start	Finish	Start	Finish		
10-25-21	9:01	9:12	9:12	9:51	9:51	9:52	CJL	10-22-21

Instrument Mfg & Model

pH	YSI 600XL-M / YSI 556 - Serial # 19A01
Temp.	
Sp. Cond.	
ORP	
DO	
Turbidity	HF Scientific DRT-15CE - Serial # HRA-7

Time	Water Depth (ft)	Flow Rate (ml/min)	pH (s.u.)	Temp (°C)	Sp Con (uS)	ORP (mV)	DO (mg/l)	Turbidity (ntu)
	Initial Water Depth (ft): 6.60			Time: 9:11				
9:15	6.61	120	6.37	20.02	367	26.0	0.41	1.45
9:20	6.61		6.37	20.14	391	28.0	0.25	1.15
9:25	6.61		6.45	20.19	407	23.9	0.41	1.25
9:30	6.61		6.46	20.19	410	23.9	0.44	1.12
9:35	6.61		6.49	20.22	416	23.1	0.57	1.15
9:40	6.61		6.52	20.20	423	21.6	0.65	1.03
9:45	6.61	✓	6.52	20.21	425	21.7	0.67	1.11
9:50	6.61	✓	6.52	20.20	421	22.0	0.69	1.19

Req. Limits for Last 3 Readings	+/- 0.1	3%	3%	+/- 10 mv	10% > 0.5	10% > 5
---------------------------------	---------	----	----	-----------	-----------	---------

Pump Mfg & Model	Color	Odor	Purge Vol (ml)	Sample Depth (ft.)
peristaltic pump	clear	—	4680	9.68

Sample Containers

Type & No.	Volume	Preservative	Type & No.	Volume	Preservative
3 vials	3 x 40mL	HCl			

HRP Associates, Inc.
 197 Scott Swamp Rd.
 Farmington, CT 06032
 (860) 674-9570

Monitor Well Data Sheet

Well ID: MW-104

Page 1 of 1

Site Background Information

Site Location:	63 West Merrick Rd, Lindenhurst, NY	Sampling Dates:	10-25-21
Job Number:	DEC1004.OM	Field Team Leader:	-
Weather:	P. Cloudy. 70°F	Team Personnel:	KG, CJL

Ground Water Elevation Data

Date	Time	Sampler Name	Equipment Model	Depth to Water (ft)		Depth to Bottom (ft)	
				uncorrected	corrected	uncorrected	corrected
10-25-21	11:39	CJL	Solinst-101 corr. factor 0	—	6.62	—	14.45

Measurement Point: 2" pvc, HW

Well Condition (circle one)

General Condition	Visible Well ID	Well Cap Present	Well Plumbness	Lock
Good	yes	yes	Good	yes
Concrete Collar	Ponded Water	Comments:		
Good	No			

Well Purging Data

Date	Time						Sampler Initials	Instrument Calibration Date
	Equipment Set-up		Purging		Sample Collection			
	Start	Finish	Start	Finish	Start	Finish		
10-25-21	11:37	11:40	11:40	12:24	12:24	12:25	CJL	10-22-21

Instrument Mfg & Model

pH	YSI 600XL-M / YSI 556 - Serial # 19A01
Temp.	
Sp. Cond.	
ORP	
DO	
Turbidity	HF Scientific DRT-15CE - Serial # HRP-7

Time	Water Depth (ft)	Flow Rate (ml/min)	pH (s.u.)	Temp (°C)	Sp Con (uS)	ORP (mV)	DO (mg/l)	Turbidity (ntu)
	Initial Water Depth (ft):	6.62		Time:	11:39			
11:43	6.62	120	6.55	19.41	767	58.4	0.60	17.5
11:48	6.62		6.61	19.47	773	46.3	0.29	7.73
11:53	6.62		6.62	19.52	777	20.2	0.18	4.87
11:58	6.62		6.61	19.55	765	20.4	0.16	2.12
12:03	6.62		6.60	19.56	696	20.5	0.15	1.88
12:08	6.62		6.59	19.55	600	19.8	0.21	1.08
12:13	6.62		6.56	19.51	557	21.1	0.30	1.21
12:18	6.63	V	6.55	19.49	551	21.4	0.37	0.86
12:23	6.63	V	6.54	19.50	545	21.8	0.46	0.71

Req. Limits for Last 3 Readings +/- 0.1 3% 3% +/- 10 mv 10% > 0.5 10% > 5

Pump Mfg & Model	Color	Odor	Purge Vol (ml)	Sample Depth (ft.)
peristaltic pump	clear	—	5280	10.53

Sample Containers

Type & No.	Volume	Preservative	Type & No.	Volume	Preservative
3 vials	3 x 40mL	HCl			

Monitor Well Data Sheet

Well ID: MW-105

Site Background Information

Site Location:	63 West Merrick Rd, Lindenhurst, NY	Sampling Dates:	10-25-21
Job Number:	DEC1004.OM	Field Team Leader:	—
Weather:	M. Cloudy, 68°F	Team Personnel:	KG, CJL

Ground Water Elevation Data

Date	Time	Sampler Name	Equipment Model	Depth to Water (ft)		Depth to Bottom (ft)	
10-25-21	10:04	CJL	Solinst-101 corr. factor 0	uncorrected	—	uncorrected	—
				corrected	6.67	corrected	14.34

Measurement Point: 2" pvc HW

Well Condition (circle one)

General Condition	Visible Well ID	Well Cap Present	Well Plumbness	Lock
Good	Yes	Yes	Good	Yes
Concrete Collar	Ponded Water	Comments: Dupe = MW-B		
Good	No			

Well Purging Data

Date	Time						Sampler Initials	Instrument Calibration Date
	Equipment Set-up		Purging		Sample Collection			
	Start	Finish	Start	Finish	Start	Finish		
10-25-21	10:00	10:14	10:14	10:48	10:48	10:50	CJL	10-22-21

Instrument Mfg & Model

pH	YSI 600XL-M / YSI 556 - Serial # 19A01
Temp.	
Sp. Cond.	
ORP	
DO	
Turbidity	HF Scientific DRT-15CE - Serial # HRP-7

Time	Water Depth (ft)	Flow Rate (ml/min)	pH (s.u.)	Temp (°C)	Sp Con (uS)	ORP (mV)	DO (mg/l)	Turbidity (ntu)
	Initial Water Depth (ft):			Time:				
	6.67			10:13				
10:17	6.68	120	6.30	20.36	590	71.2	0.32	1.49
10:22	6.68		6.25	20.36	584	70.8	0.36	1.92
10:27	6.68		6.31	20.33	573	65.2	0.64	1.55
10:32	6.68		6.37	20.31	565	59.6	0.88	1.01
10:37	6.68		6.39	20.30	565	57.4	0.98	0.93
10:42	6.69	Y	6.40	20.27	565	54.6	1.02	0.78
10:47	6.69	Y	6.41	20.27	566	53.2	1.08	0.75
Req. Limits for Last 3 Readings			+/- 0.1	3%	3%	+/- 10 mv	10% > 0.5	10% > 5

Pump Mfg & Model	Color	Odor	Purge Vol (ml)	Sample Depth (ft.)
peristaltic pump	Clear	—	4080	10.50

Sample Containers

Type & No.	Volume	Preservative	Type & No.	Volume	Preservative
3 vials	3 x 40mL	HCl			

HRP Associates, Inc.
 197 Scott Swamp Rd.
 Farmington, CT 06032
 (860) 674-9570

Monitor Well Data Sheet

Well ID: MW-106

Page 1 of 1

Site Background Information

Site Location:	63 West Merrick Rd, Lindenhurst, NY	Sampling Dates:	10/25/21
Job Number:	DEC1004.OM	Field Team Leader:	J. J.
Weather:	Cloudy. 66°F	Team Personnel:	KG, CJL

Ground Water Elevation Data

Date	Time	Sampler Name	Equipment Model	Depth to Water (ft)		Depth to Bottom (ft)	
				uncorrected	corrected	uncorrected	corrected
10-25-21	7:31	CJL	Solinst-101 corr. factor 0	---	6.59	---	13.68

Measurement Point: 2" pvc, HW

Well Condition (circle one)

General Condition	Visible Well ID	Well Cap Present	Well Plumbness	Lock
Fair	Yes	Yes	Good	Yes
Concrete Collar	Ponded Water	Comments:		
Good	No			

Well Purging Data

Date	Time						Sampler Initials	Instrument Calibration Date
	Equipment Set-up		Purging		Sample Collection			
	Start	Finish	Start	Finish	Start	Finish		
10-25-21	7:25	7:38	7:38	8:12	8:12	8:13	CJL	10-22-21

Instrument Mfg & Model

pH	YSI 600XL-M / <u>YSI 556</u> Serial # 19A01
Temp.	
Sp. Cond.	
ORP	
DO	
Turbidity	HF Scientific DRT-15CE - Serial # HRP-7

Time	Water Depth (ft)	Flow Rate (ml/min)	pH (s.u.)	Temp (°C)	Sp Con (uS)	ORP (mV)	DO (mg/l)	Turbidity (ntu)
	Initial Water Depth (ft):			Time:				
	6.59			7:37				
7:41	6.63	120	6.31	18.28	340	-92.5	0.65	2.73
7:46	6.63		6.31	18.37	327	-114.7	0.38	1.97
7:51	6.63		6.29	18.39	322	-115.7	0.34	1.67
7:56	6.63		6.28	18.39	317	-114.4	0.31	2.12
8:01	6.63		6.26	18.41	312	-112.8	0.28	1.61
8:06	6.63	Y	6.23	18.41	306	-108.5	0.26	1.92
8:11	6.63	Y	6.23	18.41	304	-107.9	0.26	1.51

Req. Limits for Last 3 Readings	+/- 0.1	3%	3%	+/- 10 mv	10% > 0.5	10% > 5
---------------------------------	---------	----	----	-----------	-----------	---------

Pump Mfg & Model	Color	Odor	Purge Vol (ml)	Sample Depth (ft.)
peristaltic pump	Clear	---	4080	10.13

Sample Containers

Type & No.	Volume	Preservative	Type & No.	Volume	Preservative
3 vials	3 x 40mL	HCl			

Monitor Well Data Sheet

Well ID: MW-107

Site Background Information

Site Location:	63 West Merrick Rd, Lindenhurst, NY	Sampling Dates:	10/25/21
Job Number:	DEC1004.OM	Field Team Leader:	
Weather:	M. Clouds, 66°F	Team Personnel:	KG, CJL

Ground Water Elevation Data

Date	Time	Sampler Name	Equipment Model	Depth to Water (ft)		Depth to Bottom (ft)	
				uncorrected	corrected	uncorrected	corrected
10-25-21	8:19	CJL	Solinst-101 corr. factor 0	—	6.60	—	14.60

Measurement Point: 2" pvc, HW

Well Condition (circle one)

General Condition	Visible Well ID	Well Cap Present	Well Plumbness	Lock
Good	Yes	Yes	Good	Yes
Concrete Collar	Ponded Water	Comments:		
Good	No			

Well Purging Data

Date	Time						Sampler Initials	Instrument Calibration Date
	Equipment Set-up		Purging		Sample Collection			
	Start	Finish	Start	Finish	Start	Finish		
10-25-21	8:15	8:29	8:29	8:58	8:58	8:59	CJL	10-22-21

Instrument Mfg & Model

pH	YSI 600XL-M / YSI 556 Serial # 19A01
Temp.	
Sp. Cond.	
ORP	
DO	
Turbidity	HF Scientific DRT-15CE - Serial # HRP-7

Time	Initial Water Depth (ft):		pH (s.u.)	Temp (°C)	Sp Con (uS)	ORP (mV)	DO (mg/l)	Turbidity (ntu)
	Water Depth (ft)	Flow Rate (ml/min)						
8:32	6.60	120	6.38	19.02	581	-100.1	0.33	0.82
8:37	6.60		6.40	19.03	575	-106.8	0.28	0.88
8:42	6.61		6.41	19.00	564	-109.6	0.24	0.73
8:47	6.61		6.42	19.01	555	-112.8	0.22	0.81
8:52	6.61	↓	6.44	19.00	551	-116.6	0.21	0.72
8:57	6.61	√	6.44	19.01	548	-116.3	0.20	0.69

Req. Limits for Last 3 Readings +/- 0.1 3% 3% +/- 10 mv 10% > 0.5 10% > 5

Pump Mfg & Model	Color	Odor	Purge Vol (ml)	Sample Depth (ft.)
peristaltic pump	clear	Organic	3480	10.60

Sample Containers

Type & No.	Volume	Preservative	Type & No.	Volume	Preservative
3 vials	3 x 40mL	HCl			

HRP Associates, Inc.
 197 Scott Swamp Rd.
 Farmington, CT 06032
 (860) 674-9570

Monitor Well Data Sheet

Well ID: RW-1

Page 1 of 1

Site Background Information

Site Location:	63 West Merrick Rd, Lindenhurst, NY	Sampling Dates:	11/25/21
Job Number:	DEC1004.OM	Field Team Leader:	
Weather:	P. SUNNY 66°F	Team Personnel:	WA, CK, KG

Ground Water Elevation Data

Date	Time	Sampler Name	Equipment Model	Depth to Water (ft)	Depth to Bottom (ft)
11/25/21	7:38	KG	Solinst-101	uncorrected	uncorrected
			corr. factor 0	corrected 9.57	corrected 33.92

Measurement Point: 8" steel recovery well

Well Condition (circle one)

General Condition	Visible Well ID	Well Cap Present	Well Plumbness	Lock
Good	Yes	Yes	Good	No
Concrete Collar	Ponded Water	Comments:		
Good	No			

Well Purging Data

Date	Time						Sampler Initials	Instrument Calibration Date
	Equipment Set-up		Purging		Sample Collection			
	Start	Finish	Start	Finish	Start	Finish		
11/25/21	9:03	9:05	9:05	9:49	9:49	9:57	KG	11/24/21

Instrument Mfg & Model

pH	YSI 600XL-M / YSI 556 - Serial # 04C2866A8
Temp.	
Sp. Cond.	
ORP	
DO	
Turbidity	HF Scientific DRT-15CE - Serial # H1214

Time	Initial Water Depth (ft):	Flow Rate (ml/min)	pH (s.u.)	Temp (°C)	Sp Con (uS)	ORP (mV)	DO (mg/l)	Turbidity (ntu)
	9.57							
9:08	9.59	160	6.23	16.60	372	-116.2	1.61	4.52
9:13	9.59		6.18	16.62	371	-112.5	0.57	4.08
9:18	9.59		6.14	16.57	370	-105.4	0.47	2.81
9:23	9.59		6.11	16.51	369	-98.4	0.42	2.51
9:28	9.59		6.08	16.47	369	-91.4	0.39	2.66
9:33	9.59		6.08	16.45	369	-86.9	0.38	2.76
9:38	9.59		6.06	16.46	368	-81.2	0.37	3.26
9:43	9.59		6.07	16.47	367	-76.1	0.35	2.56
9:48	9.59		6.06	16.48	367	-73.6	0.35	2.65
Req. Limits for Last 3 Readings			+/- 0.1	3%	3%	+/- 10 mv	10% > 0.5	10% > 5

Pump Mfg & Model	Color	Odor	Purge Vol (ml)	Sample Depth (ft.)
peristaltic pump	clear	—	7.40	28.92

Sample Containers

Type & No.	Volume	Preservative	Type & No.	Volume	Preservative
3 vials	3 x 40mL	HCl			
1 plastic	250mL	HNO3			

HRP Associates, Inc.
 197 Scott Swamp Rd.
 Farmington, CT 06032
 (860) 674-9570

Monitor Well Data Sheet

Well ID: RW-2

Page 1 of 2

Site Background Information

Site Location:	63 West Merrick Rd, Lindenhurst, NY	Sampling Dates:	10/25/21
Job Number:	DEC1004.OM	Field Team Leader:	
Weather:	17 - Sunny 68°F	Team Personnel:	DJA, CJG, KG

Ground Water Elevation Data

Date	Time	Sampler Name	Equipment Model	Depth to Water (ft)	Depth to Bottom (ft)
10/25/21	10:18	KG	Solinst-101	uncorrected	uncorrected
			corr. factor 0	corrected 1.03	corrected 35.05

Measurement Point: 8" steel recovery well

Well Condition (circle one)

General Condition	Visible Well ID	Well Cap Present	Well Plumbness	Lock
Good	No	No	Good	No
Concrete Collar	Ponded Water	Comments: Dupe = MW-A		
Good	Yes			

Well Purging Data

Date	Time						Sampler Initials	Instrument Calibration Date
	Equipment Set-up		Purging		Sample Collection			
	Start	Finish	Start	Finish	Start	Finish		
10/25/21	10:18	10:22	10:22	11:54	11:54	11:57	KG	10/24/21

Instrument Mfg & Model

pH	YSI 600XL-M / YSI 556 - Serial # 04C2866AB
Temp.	
Sp. Cond.	
ORP	
DO	
Turbidity	HF Scientific DRT-15CE - Serial # HRP-4

Time	Initial Water Depth (ft):	Flow Rate (ml/min)	pH (s.u.)	Temp (°C)	Sp Con (uS)	ORP (mV)	DO (mg/l)	Turbidity (ntu)
	1.03							
10:23	1.05	180	8.24	16.61	1418	31.6	3.41	11.99
10:28	1.11		8.68	16.26	1457	1.4	0.37	17.3
10:33	1.16		8.70	16.10	1437	-20.3	0.24	22.5
10:38	1.21		8.72	16.03	1434	-38.2	0.21	27.4
10:43	1.23		8.74	15.94	1443	-53.7	0.20	25.6
10:48	1.25		8.77	15.93	1452	-75.7	0.20	19.39
10:53	1.26		8.78	15.87	1453	-94.1	0.20	15.99
10:58	1.27		8.80	15.88	1445	-110.0	0.19	11.82
11:03	1.28		8.81	15.90	1438	-123.7	0.19	11.61
Req. Limits for Last 3 Readings			+/- 0.1	3%	3%	+/- 10 mv	10% > 0.5	10% > 5

Pump Mfg & Model	Color	Odor	Purge Vol (ml)	Sample Depth (ft.)
peristaltic pump	blue paint / clear	-	16.560	30.05

Sample Containers

Type & No.	Volume	Preservative	Type & No.	Volume	Preservative
3 vials	3 x 40mL	HCl			
1 plastic	250mL	HNO3			

HRP Associates, Inc.
 197 Scott Swamp Rd.
 Farmington, CT 06032
 (860) 674-9570

Monitor Well Data Sheet

Well ID: MW-4s

Page 1 of 1

Site Background Information

Site Location:	63 West Merrick Rd, Lindenhurst, NY	Sampling Dates:	10/25/21
Job Number:	DEC1004.OM	Field Team Leader:	
Weather:	Overcast 65°F	Team Personnel:	CX/1/15

Ground Water Elevation Data

Date	Time	Sampler Name	Equipment Model	Depth to Water (ft)	Depth to Bottom (ft)
10/25/21	7:41	KB	Solinst-101	uncorrected	uncorrected
			corr. factor 0	corrected 6.53	corrected

Measurement Point: 2" pvc HW

Well Condition (circle one)

General Condition	Visible Well ID	Well Cap Present	Well Plumbness	Lock
Fair	No	Yes	Good	Yes
Concrete Collar	Ponded Water	Comments: DTW Only		
Good	No	Rebuilt		

Well Purging Data

Date	Time						Sampler Initials	Instrument Calibration Date
	Equipment Set-up		Purging		Sample Collection			
	Start	Finish	Start	Finish	Start	Finish		

Instrument Mfg & Model

pH	YSI 600XL-M / YSI 556 - Serial #
Temp.	
Sp. Cond.	
ORP	
DO	
Turbidity	HF Scientific DRT-15CE - Serial #

Time	Initial Water Depth (ft):		pH (s.u.)	Temp (°C)	Sp Con (uS)	ORP (mV)	DO (mg/l)	Turbidity (ntu)
	Water Depth (ft)	Flow Rate (ml/min)						
Req. Limits for Last 3 Readings			+/- 0.1	3%	3%	+/- 10 mv	10% > 0.5	10% > 5

Pump Mfg & Model	Color	Odor	Purge Vol (ml)	Sample Depth (ft.)
peristaltic pump				

Sample Containers

Type & No.	Volume	Preservative	Type & No.	Volume	Preservative
3 vials	3 x 40mL	HCl			

HRP Associates, Inc.
 197 Scott Swamp Rd.
 Farmington, CT 06032
 (860) 674-9570

Monitor Well Data Sheet

Well ID: MW-101

Page 1 of 1

Site Background Information

Site Location:	63 West Merrick Rd, Lindenhurst, NY	Sampling Dates:	10-25-21
Job Number:	DEC1004.OM	Field Team Leader:	
Weather:	M. Clouds, 66°F	Team Personnel:	KG, QJL

Ground Water Elevation Data

Date	Time	Sampler Name	Equipment Model		Depth to Water (ft)		Depth to Bottom (ft)	
			Solinst-101	corr. factor	uncorrected	corrected	uncorrected	corrected
10-25-21	9:23	QJL	Solinst-101	0	uncorrected	6.83	uncorrected	14.56

Measurement Point: 2" pvc HW

Well Condition (circle one)

General Condition	Visible Well ID	Well Cap Present	Well Plumbness	Lock
Good	YES	YES	Good	YES
Concrete Collar	Ponded Water	Comments: DTW only		
Good	NO	RHS		

Well Purging Data

Date	Time						Sampler Initials	Instrument Calibration Date
	Equipment Set-up		Purging		Sample Collection			
	Start	Finish	Start	Finish	Start	Finish		

Instrument Mfg & Model

pH	YSI 600XL-M / YSI 556 - Serial #
Temp.	
Sp. Cond.	
ORP	
DO	
Turbidity	HF Scientific DRT-15CE - Serial #

Time	Initial Water Depth (ft):		pH (s.u.)	Temp (°C)	Sp Con (uS)	ORP (mV)	DO (mg/l)	Turbidity (ntu)
	Water Depth (ft)	Flow Rate (ml/min)						

Req. Limits for Last 3 Readings +/- 0.1 3% 3% +/- 10 mv 10% > 0.5 10% > 5

Pump Mfg & Model	Color	Odor	Purge Vol (ml)	Sample Depth (ft.)
peristaltic pump				

Sample Containers

Type & No.	Volume	Preservative	Type & No.	Volume	Preservative
3 vials	3 x 40mL	HCl			

HRP Associates, Inc.
 197 Scott Swamp Rd.
 Farmington, CT 06032
 (860) 674-9570

Monitor Well Data Sheet

Well ID: Mw-108

Page 1 of 1

Site Background Information

Site Location:	63 West Merrick Rd, Lindenhurst, NY	Sampling Dates:	10/25/21
Job Number:	DEC1004.OM	Field Team Leader:	
Weather:	Overcast 65°F	Team Personnel:	CJK/KK

Ground Water Elevation Data

Date	Time	Sampler Name	Equipment Model	Depth to Water (ft)	Depth to Bottom (ft)
10/25/21	7:44	KG	Solinst-101	uncorrected	uncorrected
			corr. factor 0	corrected 6.95	corrected 14.42

Measurement Point: 2" pvc HW

Well Condition (circle one)

General Condition	Visible Well ID	Well Cap Present	Well Plumbness	Lock
FAIR	No	Yes	Good	No
Concrete Collar	Ponded Water	Comments: no bolts		
Good	No	DTPW only		

Well Purging Data

Date	Time				Sampler Initials	Instrument Calibration Date	
	Equipment Set-up		Purging				Sample Collection
	Start	Finish	Start	Finish	Start	Finish	

Instrument Mfg & Model

pH	YSI 600XL-M / YSI 556 - Serial #
Temp.	
Sp. Cond.	
ORP	
DO	
Turbidity	HF Scientific DRT-15CE - Serial #

Time	Initial Water Depth (ft):		Time:		Sp Con (uS)	ORP (mV)	DO (mg/l)	Turbidity (ntu)
	Water Depth (ft)	Flow Rate (ml/min)	pH (s.u.)	Temp (°C)				

Req. Limits for Last 3 Readings +/- 0.1 3% 3% +/- 10 mv 10% > 0.5 10% > 5

Pump Mfg & Model	Color	Odor	Purge Vol (ml)	Sample Depth (ft.)
peristaltic pump				

Sample Containers

Type & No.	Volume	Preservative	Type & No.	Volume	Preservative
3 vials	3 x 40mL	HCl			

HRP Associates, Inc.
 197 Scott Swamp Rd.
 Farmington, CT 06032
 (860) 674-9570

Monitor Well Data Sheet

Well ID: Mw-109

Page 1 of 1

Site Background Information

Site Location:	63 West Merrick Rd, Lindenhurst, NY	Sampling Dates:	12/25/14
Job Number:	DEC1004.OM	Field Team Leader:	
Weather:	Overcast 65°F	Team Personnel:	CJY/KK

Ground Water Elevation Data

Date	Time	Sampler Name	Equipment Model	Depth to Water (ft)	Depth to Bottom (ft)
12/25/14	10:13	KB	Solinst-101	uncorrected	uncorrected
			corr. factor 0	corrected 1.00	corrected 34.50

Measurement Point: 2" pvc HW

Well Condition (circle one)

General Condition	Visible Well ID	Well Cap Present	Well Plumbness	Lock
FAIR	No	Yes	Good	No
Concrete Collar	Ponded Water	Comments: DTW ONLY		
Good	No	BHS		

Well Purging Data

Date	Time				Sampler Initials	Instrument Calibration Date
	Equipment Set-up		Purging			
	Start	Finish	Start	Finish	Start	Finish

Instrument Mfg & Model

pH	YSI 600XL-M / YSI 556 - Serial #
Temp.	
Sp. Cond.	
ORP	
DO	
Turbidity	HF Scientific DRT-15CE - Serial #

Time	Initial Water Depth (ft):		pH (s.u.)	Temp (°C)	Sp Con (uS)	ORP (mV)	DO (mg/l)	Turbidity (ntu)
	Water Depth (ft)	Flow Rate (ml/min)						

Req. Limits for Last 3 Readings +/- 0.1 3% 3% +/- 10 mv 10% > 0.5 10% > 5

Pump Mfg & Model	Color	Odor	Purge Vol (ml)	Sample Depth (ft.)
peristaltic pump				

Sample Containers

Type & No.	Volume	Preservative	Type & No.	Volume	Preservative
3 vials	3 x 40mL	HCl			

Monitor Well Data Sheet

Well ID: MW-110

Site Background Information

Site Location:	63 West Merrick Rd, Lindenhurst, NY	Sampling Dates:	
Job Number:	DEC1004.OM	Field Team Leader:	
Weather:		Team Personnel:	

Ground Water Elevation Data

Date	Time	Sampler Name	Equipment Model	Depth to Water (ft)	Depth to Bottom (ft)
			Solinst-101	uncorrected	uncorrected
			corr. factor 0	corrected	corrected 34.39

Measurement Point: 2" pvc HW

Well Condition (circle one)

General Condition	Visible Well ID	Well Cap Present	Well Plumbness	Lock
Concrete Collar	Ponded Water	Comments: <i>DZW only</i> <i>Unable to locate</i>		

Well Purging Data

Date	Time						Sampler Initials	Instrument Calibration Date
	Equipment Set-up		Purging		Sample Collection			
	Start	Finish	Start	Finish	Start	Finish		

Instrument Mfg & Model

pH	YSI 600XL-M / YSI 556 - Serial #
Temp.	
Sp. Cond.	
ORP	
DO	
Turbidity	HF Scientific DRT-15CE - Serial #

Time	Initial Water Depth (ft):		pH (s.u.)	Temp (°C)	Sp Con (uS)	ORP (mV)	DO (mg/l)	Turbidity (ntu)
	Water Depth (ft)	Flow Rate (ml/min)						
Req. Limits for Last 3 Readings			+/- 0.1	3%	3%	+/- 10 mv	10% > 0.5	10% > 5

Pump Mfg & Model	Color	Odor	Purge Vol (ml)	Sample Depth (ft.)
peristaltic pump				

Sample Containers

Type & No.	Volume	Preservative	Type & No.	Volume	Preservative
3 vials	3 x 40mL	HCl			

HRP Associates, Inc.
 197 Scott Swamp Rd.
 Farmington, CT 06032
 (860) 674-9570

Monitor Well Data Sheet

Well ID: MW-111

Page 1 of 1

Site Background Information

Site Location:	63 West Merrick Rd, Lindenhurst, NY	Sampling Dates:	4/25/21
Job Number:	DEC1004.OM	Field Team Leader:	
Weather:	Overcast 65°F	Team Personnel:	caclio

Ground Water Elevation Data

Date	Time	Sampler Name	Equipment Model		Depth to Water (ft)		Depth to Bottom (ft)	
			Solinst-101	corr. factor	uncorrected	corrected	uncorrected	corrected
4/25/21	10:10	KG	Solinst-101	0	uncorrected	3.07	uncorrected	34.40

Measurement Point: 2" pvc HW

Well Condition (circle one)

General Condition	Visible Well ID	Well Cap Present	Well Plumbness	Lock
Fail	No	Yes	Good	No
Concrete Collar	Ponded Water	Comments: 2 half tabs broken BTW only		
Good	No			

Well Purging Data

Date	Time						Sampler Initials	Instrument Calibration Date
	Equipment Set-up		Purging		Sample Collection			
	Start	Finish	Start	Finish	Start	Finish		

Instrument Mfg & Model

pH	YSI 600XL-M / YSI 556 - Serial #
Temp.	
Sp. Cond.	
ORP	
DO	
Turbidity	HF Scientific DRT-15CE - Serial #

Time	Initial Water Depth (ft):		Time:		Sp Con (uS)	ORP (mV)	DO (mg/l)	Turbidity (ntu)
	Water Depth (ft)	Flow Rate (ml/min)	pH (s.u.)	Temp (°C)				
Req. Limits for Last 3 Readings			+/- 0.1	3%	3%	+/- 10 mv	10% > 0.5	10% > 5

Pump Mfg & Model	Color	Odor	Purge Vol (ml)	Sample Depth (ft.)
peristaltic pump				



Sample Containers

Type & No.	Volume	Preservative	Type & No.	Volume	Preservative
3 vials	3 x 40mL	HCl			

DAILY INSPECTION REPORT

Report No. (Site Name) - NYSDEC Site No. 152125

Date: 10/25/21

NYSDEC Division of Environmental Remediation				 Department of Environmental Conservation			NYSDEC Contract No. D011107		
Site Location: 63 West Montauk Highway Lindenhurst, NY							Superintendent: NYSDEC PM: P. Long Consultant PM: D. Feinson		
Weather Conditions							Consultant Site Inspectors: D. Adam K. Gandarillas, C Labbe		
General Description		AM	Partly Cloudy					PM	
Temperature	69	AM	72					PM	
Wind	S	AM	S					PM	
Health & Safety									
If any box below is checked "Yes", provide explanation under "Health & Safety Comments".									
Were there any changes to the Health & Safety Plan?							*Yes	<input type="checkbox"/> No	NA
Were there any exceedances of the perimeter air monitoring reported on this date?							*Yes	<input type="checkbox"/> No	NA
Were there any nuisance issues reported/observed on this date?							*Yes	<input type="checkbox"/> No	NA
Health & Safety Comments									
Summary of Work Performed		Arrived at site:	7:15am	Departed Site:	1:45pm				
Monthly building/fire inspection. Cut lawn. Hang fire extinguisher, cut brush growing into sidewalk on West Montauk Highway. Sample monitor wells and drum purge water in site building.									
Equipment/Material Tracking									
If any box below is checked "Yes", provide explanation under "Material Tracking Comments".									
Were there any vehicles which did not display proper D.O.T numbers and placards?							*Yes	<input type="checkbox"/> No	NA
Were there any vehicles which were not tarped?							* Yes	<input type="checkbox"/> No	NA
Were there any vehicles which were not decontaminated prior to exiting the work site?							* Yes	<input type="checkbox"/> No	NA
Personnel and Equipment									
Individual	Company			Trade		Total Hours			
David Adam	HRP			Technician		6.5			
Keith Gandarillas	HRP			Technician		6.5			
Chris Labbe	HRP			Technician		6.5			

DAILY INSPECTION REPORT

Report No. (Site Name) - NYSDEC Site No. 152125

Date: 10/25/21

Visitors to Site			
Name	Representing	Entered Exclusion/CRZ Zone	
		Yes	No
		Yes	No
		Yes	No
		Yes	No
		Yes	No
		Yes	No
		Yes	No
		Yes	No
		Yes	No
		Yes	No

Site Representatives	
Name	Representing

Project Schedule Comments

Issues Pending

Interaction with Public, Property Owners, Media, etc.

DAILY INSPECTION REPORT

Report No. (Site Name) - NYSDEC Site No. 152125

Date: 10/25/21

Include (insert) figures with markups showing location of work and job progress

DAILY INSPECTION REPORT

Report No. (Site Name) - NYSDEC Site No. 152125

Date: 10/25/21

DAILY INSPECTION REPORT

Report No. (Site Name) - NYSDEC Site No. 152125

Date: 10/25/21

Site Photographs (Descriptions Below)	

DAILY INSPECTION REPORT

Report No. (Site Name) - NYSDEC Site No. 152125

Date: 10/25/21

Comments	
Site Inspector(s):	Date:

DAILY INSPECTION REPORT

Report No. _____ (Site Name) - NYSDEC Site No. 152125

Date: 10/25/21

DAILY HEALTH CHECKLIST

Is social distancing being practiced?	Yes <input checked="" type="checkbox"/>	No <input type="checkbox"/>
Is the tail gate safety meeting held outdoors?	Yes <input checked="" type="checkbox"/>	No <input type="checkbox"/>
Are remote/call in job meetings being held in lieu of meeting in person where possible?	Yes <input checked="" type="checkbox"/>	No <input type="checkbox"/>
Were personal protective gloves, masks, and eye protection being used?	Yes <input checked="" type="checkbox"/>	No <input type="checkbox"/>
Are sanitizing wipes, wash stations or spray available?	Yes <input checked="" type="checkbox"/>	No <input type="checkbox"/>
Have any workers/visitors been excluded based on close contact with individuals diagnosed with COVID-19, have recently traveled to restricted areas or countries, or are symptomatic (fever, chills, cough/shortness of breath)?	Yes <input type="checkbox"/>	No <input checked="" type="checkbox"/>
<u>Comments:</u>		

REMEDIAL ACTIVITIES AT PROPERTIES

1. Have anyone at this location been tested and confirmed to have COVID-19?	Yes <input type="checkbox"/>	No <input checked="" type="checkbox"/>
2. Is anyone at this location isolated or quarantined for COVID-19?	Yes <input type="checkbox"/>	No <input checked="" type="checkbox"/>
3. Has anyone at this locaton had contact with anyone known to have COVID-19 in the past 14 days?	Yes <input type="checkbox"/>	No <input checked="" type="checkbox"/>
4. Does anyone at this locaton have any symptoms of a respiratory infection (e.g., cough, sore throat, fever, or shortness of breath)?	Yes <input type="checkbox"/>	No <input checked="" type="checkbox"/>
5. Does the Department and its contractors have your permission to enter the property at this time?	Yes <input checked="" type="checkbox"/>	No <input type="checkbox"/>
If Yes to <u>any</u> of 1-4 above:		
<ul style="list-style-type: none"> If it is <u>not</u> critical that service/entry be carried out immediately and can be postponed until the risk of COVID-19 is lower, or can be accomplished remotely/without entry, postpone or conduct service without entry. If it <u>is</u> critical that service/entry be carried out immediately, advise occupants that as a precaution and for our own protection, project personnel will be donning appropriate PPE* (including respiratory protection) - and do so prior to entry. 	Yes <input type="checkbox"/>	No <input type="checkbox"/>
<u>Comments:</u>		

DAILY INSPECTION REPORT

Report No. (Site Name) - NYSDEC Site No. 152125

Date: 10/25/21

NUISANCE CHECKLIST

Were there any community complaints related to work on this date?	Yes <input type="checkbox"/>	No <input checked="" type="checkbox"/>	N/A <input type="checkbox"/>
Were there any odors detected on this date?	Yes <input type="checkbox"/>	No <input checked="" type="checkbox"/>	N/A <input type="checkbox"/>
Was noise outside specification and/or above background on this date?	Yes <input type="checkbox"/>	No <input checked="" type="checkbox"/>	N/A <input type="checkbox"/>
Were vibration readings outside specification and/or above background on this date?	Yes <input type="checkbox"/>	No <input type="checkbox"/>	N/A <input checked="" type="checkbox"/>
Any visible dust observed beyond the work perimeter on this date?	Yes <input type="checkbox"/>	No <input type="checkbox"/>	N/A <input checked="" type="checkbox"/>
Any visible contrast (turbidity) beyond engineering controls observed on this date?	Yes <input type="checkbox"/>	No <input type="checkbox"/>	N/A <input checked="" type="checkbox"/>
Was turbidity checked at the Montauk Highway outfall?	AM <input type="checkbox"/>	PM <input type="checkbox"/>	N/A <input checked="" type="checkbox"/>
Were any property owners NOT provided advance notice for work performed on this property on this date?	Yes <input type="checkbox"/>	No <input type="checkbox"/>	N/A <input checked="" type="checkbox"/>
Was the temporary fabric structure closed at the end of the day?	Yes <input type="checkbox"/>	No <input type="checkbox"/>	N/A <input checked="" type="checkbox"/>
Has Contractor failed to protect all foundations and structures adjacent to and adjoining the site which are affected by the excavations or other operations connected with performance of the Work?	Yes <input type="checkbox"/>	No <input type="checkbox"/>	N/A <input checked="" type="checkbox"/>
If yes, has Contractor been notified?	Yes <input type="checkbox"/>	No <input type="checkbox"/>	N/A <input checked="" type="checkbox"/>
<u>Comments:</u>			

DAILY INSPECTION REPORT

Report No. (Site Name) - NYSDEC Site No. 152125

Date: 11/23/21

NYSDEC Division of Environmental Remediation		Department of Environmental Conservation				NYSDEC Contract No. D011107 Superintendent: NYSDEC PM: P. Long Consultant PM: D. Feinson Consultant Site Inspectors: D. Adam K. Gandarillas	
Site Location: 63 West Montauk Highway Lindenhurst, NY							
Weather Conditions							
General Description	Sunny	AM			PM		
Temperature	45	AM			PM		
Wind	NNW	AM			PM		
Health & Safety If any box below is checked "Yes", provide explanation under "Health & Safety Comments".							
Were there any changes to the Health & Safety Plan?					*Yes	No	NA
Were there any exceedances of the perimeter air monitoring reported on this date?					*Yes	No	NA
Were there any nuisance issues reported/observed on this date?					*Yes	No	NA
Health & Safety Comments 							
Summary of Work Performed		Arrived at site:	9:45am	Departed Site:	11:45am		
Monthly building/fire inspection. Cut lawn. Rake leaves							
Equipment/Material Tracking If any box below is checked "Yes", provide explanation under "Material Tracking Comments".							
Were there any vehicles which did not display proper D.O.T numbers and placards?					*Yes	No	NA
Were there any vehicles which were not tarped?					* Yes	No	NA
Were there any vehicles which were not decontaminated prior to exiting the work site?					* Yes	No	NA
Personnel and Equipment							
Individual	Company	Trade		Total Hours			
David Adam	HRP	Technician		2			
Keith Gandarillas	HRP	Technician		2			
Equipment Description		Contractor/Vendor			Qty	Used	

DAILY INSPECTION REPORT

Report No. (Site Name) - NYSDEC Site No. 152125

Date: 11/23/21

Include (insert) figures with markups showing location of work and job progress

DAILY INSPECTION REPORT

Report No. (Site Name) - NYSDEC Site No. 152125

Date: 11/23/21

DAILY INSPECTION REPORT

Report No. (Site Name) - NYSDEC Site No. 152125

Date: 11/23/21

Site Photographs (Descriptions Below)	

DAILY INSPECTION REPORT

Report No. (Site Name) - NYSDEC Site No. 152125

Date: 11/23/21

Comments	
Site Inspector(s):	Date:

DAILY INSPECTION REPORT

Report No. _____ (Site Name) - NYSDEC Site No. 152125

Date: 11/23/21

DAILY HEALTH CHECKLIST

Is social distancing being practiced?	Yes <input checked="" type="checkbox"/>	No <input type="checkbox"/>
Is the tail gate safety meeting held outdoors?	Yes <input checked="" type="checkbox"/>	No <input type="checkbox"/>
Are remote/call in job meetings being held in lieu of meeting in person where possible?	Yes <input checked="" type="checkbox"/>	No <input type="checkbox"/>
Were personal protective gloves, masks, and eye protection being used?	Yes <input checked="" type="checkbox"/>	No <input type="checkbox"/>
Are sanitizing wipes, wash stations or spray available?	Yes <input checked="" type="checkbox"/>	No <input type="checkbox"/>
Have any workers/visitors been excluded based on close contact with individuals diagnosed with COVID-19, have recently traveled to restricted areas or countries, or are symptomatic (fever, chills, cough/shortness of breath)?	Yes <input type="checkbox"/>	No <input checked="" type="checkbox"/>
<u>Comments:</u>		

REMEDIAL ACTIVITIES AT PROPERTIES

1. Have anyone at this location been tested and confirmed to have COVID-19?	Yes <input type="checkbox"/>	No <input checked="" type="checkbox"/>
2. Is anyone at this location isolated or quarantined for COVID-19?	Yes <input type="checkbox"/>	No <input checked="" type="checkbox"/>
3. Has anyone at this locaton had contact with anyone known to have COVID-19 in the past 14 days?	Yes <input type="checkbox"/>	No <input checked="" type="checkbox"/>
4. Does anyone at this locaton have any symptoms of a respiratory infection (e.g., cough, sore throat, fever, or shortness of breath)?	Yes <input type="checkbox"/>	No <input checked="" type="checkbox"/>
5. Does the Department and its contractors have your permission to enter the property at this time?	Yes <input checked="" type="checkbox"/>	No <input type="checkbox"/>
If Yes to <u>any</u> of 1-4 above:		
<ul style="list-style-type: none"> If it is <u>not</u> critical that service/entry be carried out immediately and can be postponed until the risk of COVID-19 is lower, or can be accomplished remotely/without entry, postpone or conduct service without entry. If it <u>is</u> critical that service/entry be carried out immediately, advise occupants that as a precaution and for our own protection, project personnel will be donning appropriate PPE* (including respiratory protection) - and do so prior to entry. 	Yes <input type="checkbox"/>	No <input type="checkbox"/>
<u>Comments:</u>		

DAILY INSPECTION REPORT

Report No. (Site Name) - NYSDEC Site No. 152125

Date: 11/23/21



NUISANCE CHECKLIST

Were there any community complaints related to work on this date?	Yes <input type="checkbox"/>	No <input checked="" type="checkbox"/>	N/A <input type="checkbox"/>
Were there any odors detected on this date?	Yes <input type="checkbox"/>	No <input checked="" type="checkbox"/>	N/A <input type="checkbox"/>
Was noise outside specification and/or above background on this date?	Yes <input type="checkbox"/>	No <input checked="" type="checkbox"/>	N/A <input type="checkbox"/>
Were vibration readings outside specification and/or above background on this date?	Yes <input type="checkbox"/>	No <input type="checkbox"/>	N/A <input checked="" type="checkbox"/>
Any visible dust observed beyond the work perimeter on this date?	Yes <input type="checkbox"/>	No <input type="checkbox"/>	N/A <input checked="" type="checkbox"/>
Any visible contrast (turbidity) beyond engineering controls observed on this date?	Yes <input type="checkbox"/>	No <input type="checkbox"/>	N/A <input checked="" type="checkbox"/>
Was turbidity checked at the Montauk Highway outfall?	AM <input type="checkbox"/>	PM <input type="checkbox"/>	N/A <input checked="" type="checkbox"/>
Were any property owners NOT provided advance notice for work performed on this property on this date?	Yes <input type="checkbox"/>	No <input type="checkbox"/>	N/A <input checked="" type="checkbox"/>
Was the temporary fabric structure closed at the end of the day?	Yes <input type="checkbox"/>	No <input type="checkbox"/>	N/A <input checked="" type="checkbox"/>
Has Contractor failed to protect all foundations and structures adjacent to and adjoining the site which are affected by the excavations or other operations connected with performance of the Work?	Yes <input type="checkbox"/>	No <input type="checkbox"/>	N/A <input checked="" type="checkbox"/>
If yes, has Contractor been notified?	Yes <input type="checkbox"/>	No <input type="checkbox"/>	N/A <input checked="" type="checkbox"/>
<u>Comments:</u> 			

DAILY INSPECTION REPORT

Report No. (Site Name) - NYSDEC Site No. 152125

Date: 12/20/21

NYSDEC Division of Environmental Remediation		 Department of Environmental Conservation				NYSDEC Contract No. D011107		
Site Location: 63 West Montauk Highway Lindenhurst, NY						Superintendent: NYSDEC PM: P. Long Consultant PM: D. Feinson		
Weather Conditions						Consultant Site Inspectors: D. Adam K. Gandarillas		
General Description		AM	Sunny		PM			
Temperature		AM	37		PM			
Wind		AM	SSW		PM			
Health & Safety If any box below is checked "Yes", provide explanation under "Health & Safety Comments".								
Were there any changes to the Health & Safety Plan?						*Yes	No	NA
Were there any exceedances of the perimeter air monitoring reported on this date?						*Yes	No	NA
Were there any nuisance issues reported/observed on this date?						*Yes	No	NA
Health & Safety Comments								
Summary of Work Performed								
Arrived at site:		12:30am		Departed Site:		2:30am		
Monthly building/fire inspection. Rake leaves								
Equipment/Material Tracking If any box below is checked "Yes", provide explanation under "Material Tracking Comments".								
Were there any vehicles which did not display proper D.O.T numbers and placards?						*Yes	No	NA
Were there any vehicles which were not tarped?						* Yes	No	NA
Were there any vehicles which were not decontaminated prior to exiting the work site?						* Yes	No	NA
Personnel and Equipment								
Individual	Company		Trade		Total Hours			
David Adam	HRP		Technician		2			
Keith Gandarillas	HRP		Technician		2			
Equipment Description		Contractor/Vendor			Qty	Used		

DAILY INSPECTION REPORT

Report No. (Site Name) - NYSDEC Site No. 152125

Date: 12/20/21

Visitors to Site			
Name	Representing	Entered Exclusion/CRZ Zone	
		Yes	No
		Yes	No
		Yes	No
		Yes	No
		Yes	No
		Yes	No
		Yes	No
		Yes	No
		Yes	No
		Yes	No
		Yes	No

Site Representatives	
Name	Representing

Project Schedule Comments

Issues Pending

Interaction with Public, Property Owners, Media, etc.

DAILY INSPECTION REPORT

Report No. (Site Name) - NYSDEC Site No. 152125

Date: 12/20/21

Include (insert) figures with markups showing location of work and job progress

DAILY INSPECTION REPORT

Report No. (Site Name) - NYSDEC Site No. 152125

Date: 12/20/21

DAILY INSPECTION REPORT

Report No. (Site Name) - NYSDEC Site No. 152125

Date: 12/20/21

Site Photographs (Descriptions Below)	

DAILY INSPECTION REPORT

Report No. (Site Name) - NYSDEC Site No. 152125

Date: 12/20/21

Comments	
Site Inspector(s):	Date:

DAILY INSPECTION REPORT

Report No. (Site Name) - NYSDEC Site No. 152125

Date: 12/20/21

DAILY HEALTH CHECKLIST

Is social distancing being practiced?	Yes <input checked="" type="checkbox"/>	No <input type="checkbox"/>
Is the tail gate safety meeting held outdoors?	Yes <input checked="" type="checkbox"/>	No <input type="checkbox"/>
Are remote/call in job meetings being held in lieu of meeting in person where possible?	Yes <input checked="" type="checkbox"/>	No <input type="checkbox"/>
Were personal protective gloves, masks, and eye protection being used?	Yes <input checked="" type="checkbox"/>	No <input type="checkbox"/>
Are sanitizing wipes, wash stations or spray available?	Yes <input checked="" type="checkbox"/>	No <input type="checkbox"/>
Have any workers/visitors been excluded based on close contact with individuals diagnosed with COVID-19, have recently traveled to restricted areas or countries, or are symptomatic (fever, chills, cough/shortness of breath)?	Yes <input type="checkbox"/>	No <input checked="" type="checkbox"/>
<u>Comments:</u>		

REMEDIAL ACTIVITIES AT PROPERTIES

1. Have anyone at this location been tested and confirmed to have COVID-19?	Yes <input type="checkbox"/>	No <input checked="" type="checkbox"/>
2. Is anyone at this location isolated or quarantined for COVID-19?	Yes <input type="checkbox"/>	No <input checked="" type="checkbox"/>
3. Has anyone at this locaton had contact with anyone known to have COVID-19 in the past 14 days?	Yes <input type="checkbox"/>	No <input checked="" type="checkbox"/>
4. Does anyone at this locaton have any symptoms of a respiratory infection (e.g., cough, sore throat, fever, or shortness of breath)?	Yes <input type="checkbox"/>	No <input checked="" type="checkbox"/>
5. Does the Department and its contractors have your permission to enter the property at this time?	Yes <input checked="" type="checkbox"/>	No <input type="checkbox"/>
If Yes to <u>any</u> of 1-4 above:		
<ul style="list-style-type: none"> If it is <u>not</u> critical that service/entry be carried out immediately and can be postponed until the risk of COVID-19 is lower, or can be accomplished remotely/without entry, postpone or conduct service without entry. If it <u>is</u> critical that service/entry be carried out immediately, advise occupants that as a precaution and for our own protection, project personnel will be donning appropriate PPE* (including respiratory protection) - and do so prior to entry. 	Yes <input type="checkbox"/>	No <input type="checkbox"/>
<u>Comments:</u>		

DAILY INSPECTION REPORT

Report No. (Site Name) - NYSDEC Site No. 152125

Date: 12/20/21

NUISANCE CHECKLIST

Were there any community complaints related to work on this date?	Yes <input type="checkbox"/>	No <input checked="" type="checkbox"/>	N/A <input type="checkbox"/>
Were there any odors detected on this date?	Yes <input type="checkbox"/>	No <input checked="" type="checkbox"/>	N/A <input type="checkbox"/>
Was noise outside specification and/or above background on this date?	Yes <input type="checkbox"/>	No <input checked="" type="checkbox"/>	N/A <input type="checkbox"/>
Were vibration readings outside specification and/or above background on this date?	Yes <input type="checkbox"/>	No <input type="checkbox"/>	N/A <input checked="" type="checkbox"/>
Any visible dust observed beyond the work perimeter on this date?	Yes <input type="checkbox"/>	No <input type="checkbox"/>	N/A <input checked="" type="checkbox"/>
Any visible contrast (turbidity) beyond engineering controls observed on this date?	Yes <input type="checkbox"/>	No <input type="checkbox"/>	N/A <input checked="" type="checkbox"/>
Was turbidity checked at the Montauk Highway outfall?	AM <input type="checkbox"/>	PM <input type="checkbox"/>	N/A <input checked="" type="checkbox"/>
Were any property owners NOT provided advance notice for work performed on this property on this date?	Yes <input type="checkbox"/>	No <input type="checkbox"/>	N/A <input checked="" type="checkbox"/>
Was the temporary fabric structure closed at the end of the day?	Yes <input type="checkbox"/>	No <input type="checkbox"/>	N/A <input checked="" type="checkbox"/>
Has Contractor failed to protect all foundations and structures adjacent to and adjoining the site which are affected by the excavations or other operations connected with performance of the Work?	Yes <input type="checkbox"/>	No <input type="checkbox"/>	N/A <input checked="" type="checkbox"/>
If yes, has Contractor been notified?	Yes <input type="checkbox"/>	No <input type="checkbox"/>	N/A <input checked="" type="checkbox"/>
<u>Comments:</u>			

Capitol

NON-HAZARDOUS WASTE MANIFEST

1. Generator ID Number

2. Page 1 of 1

3. Emergency Response Phone

4. Waste Tracking Number

5. Generator's Name and Mailing Address

Generator's Site Address (if different than mailing address)

NYS DEPT. OF ENVIRONMENTAL CONSERVATION
625 BROADWAY
ALBANY, NY 12253

63 WEST MERRICK ROAD
LINDENHURST, NY 11757

6. Transporter 1 Company Name

U.S. EPA ID Number

AARCO ENVIRONMENTAL SERVICES CORP.

NYR000107326

7. Transporter 2 Company Name

U.S. EPA ID Number

8. Designated Facility Name and Site Address

U.S. EPA ID Number

DALE TRANSFER CORP.
129 DALE STREET, WEST BABYLON NY 11704

N/A

Facility's Phone: 631-393-2882

9. Waste Shipping Name and Description

10. Containers

11. Total Quantity

12. Unit Wt./Vol.

No.

Type

1. NON-REGULATED SOLIDS (SOIL)

1

DM

300

P

2. NON-REGULATED MATERIAL (PURGE WATER/POLY SHEETING)

2

DM

850

P

3. NON-REGULATED MATERIAL (EMPTY DRUM)

1

DM

25

P

13. Special Handling Instructions and Additional Information

1. APPROVAL # 2021-734
2. APPROVAL # 2021-735

3. APPROVAL # 2021-735
JOB # 213351 TRUCK # B507

14. GENERATOR'S CERTIFICATION: I certify the materials described above on this manifest are not subject to federal regulations for reporting proper disposal of Hazardous Waste.

Generator's/Officer's Printed/Typed Name

Signature

Month Day Year

Agent for NYS DEC Alexandra Isenberg

Alex Jay

11 15 21

15. International Shipments

Import to U.S.

Export from U.S.

Port of entry/exit:

Transporter Signature (for exports only):

Date leaving U.S.:

16. Transporter Acknowledgment of Receipt of Materials

Transporter 1 Printed/Typed Name

Signature

Month Day Year

Transporter 2 Printed/Typed Name

Signature

Month Day Year

17. Discrepancy

17a. Discrepancy Indication Space

Quantity

Type

Residue

Partial Rejection

Full Rejection

Manifest Reference Number:

17b. Alternate Facility (or Generator)

U.S. EPA ID Number

Facility's Phone:

17c. Signature of Alternate Facility (or Generator)

Month Day Year

18. Designated Facility Owner or Operator. Certification of receipt of materials covered by the manifest except as noted in Item 17a

Printed/Typed Name

Signature

Month Day Year

Joe Nuda

Joe Nuda

11 16 21

GENERATOR

INTL

TRANSPORTER

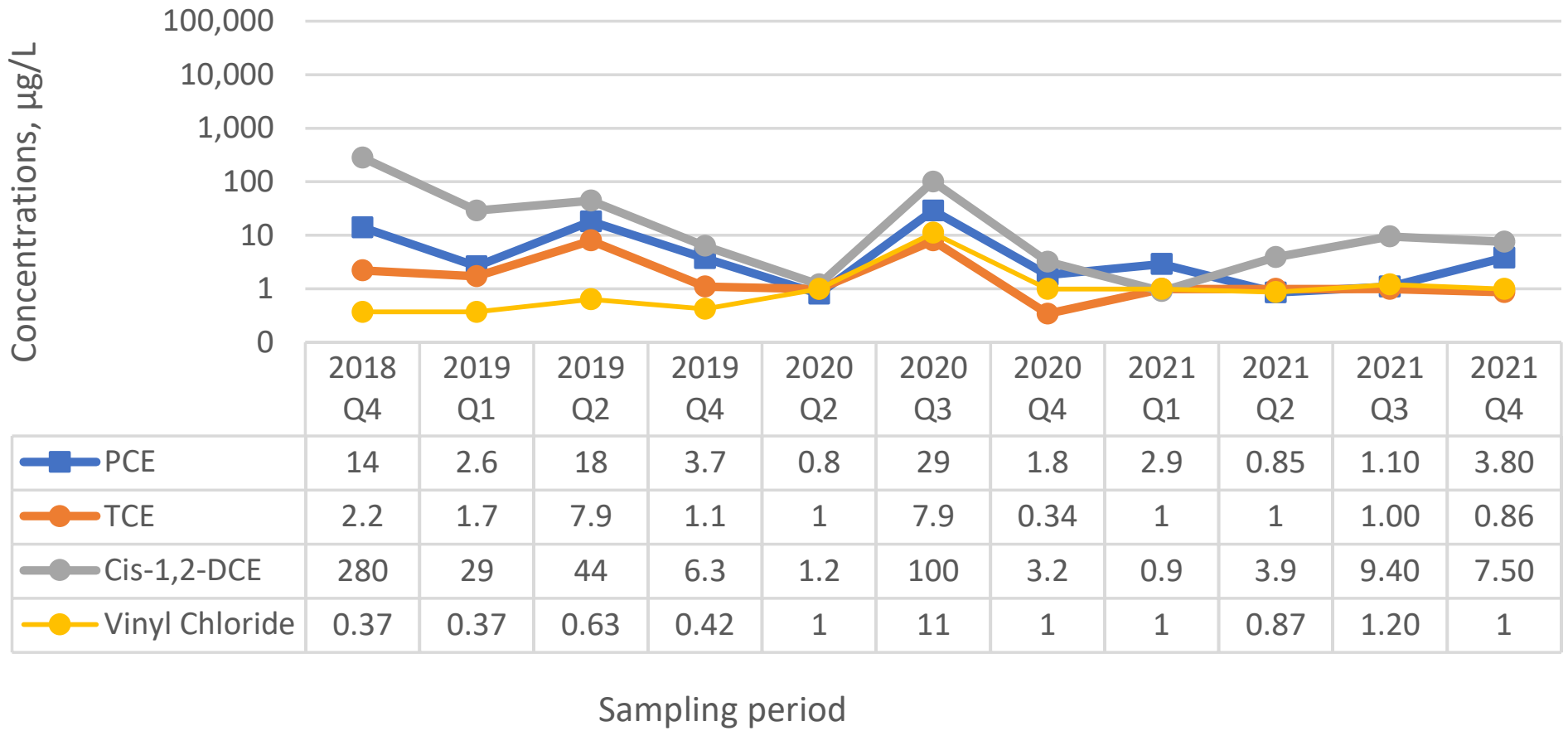
DESIGNATED FACILITY

APPENDIX B

Temporal Variations of VOCs Concentrations

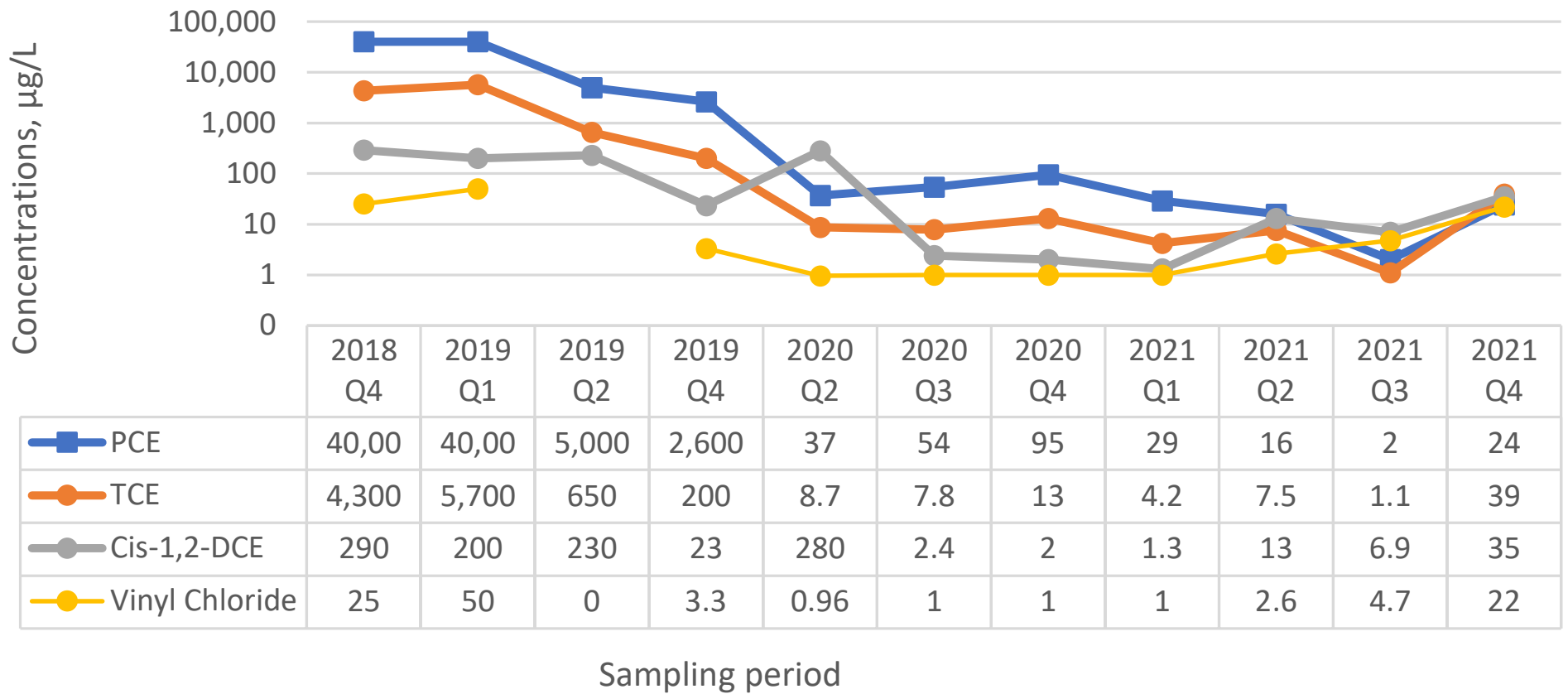
Temporal Variations of VOCs Concentrations
 Active Industrial Uniform Superfund Site #152125
 63 West Merrick Road, Lindenhurst, New York
 HRP# DEC1004.OM

MW-2S



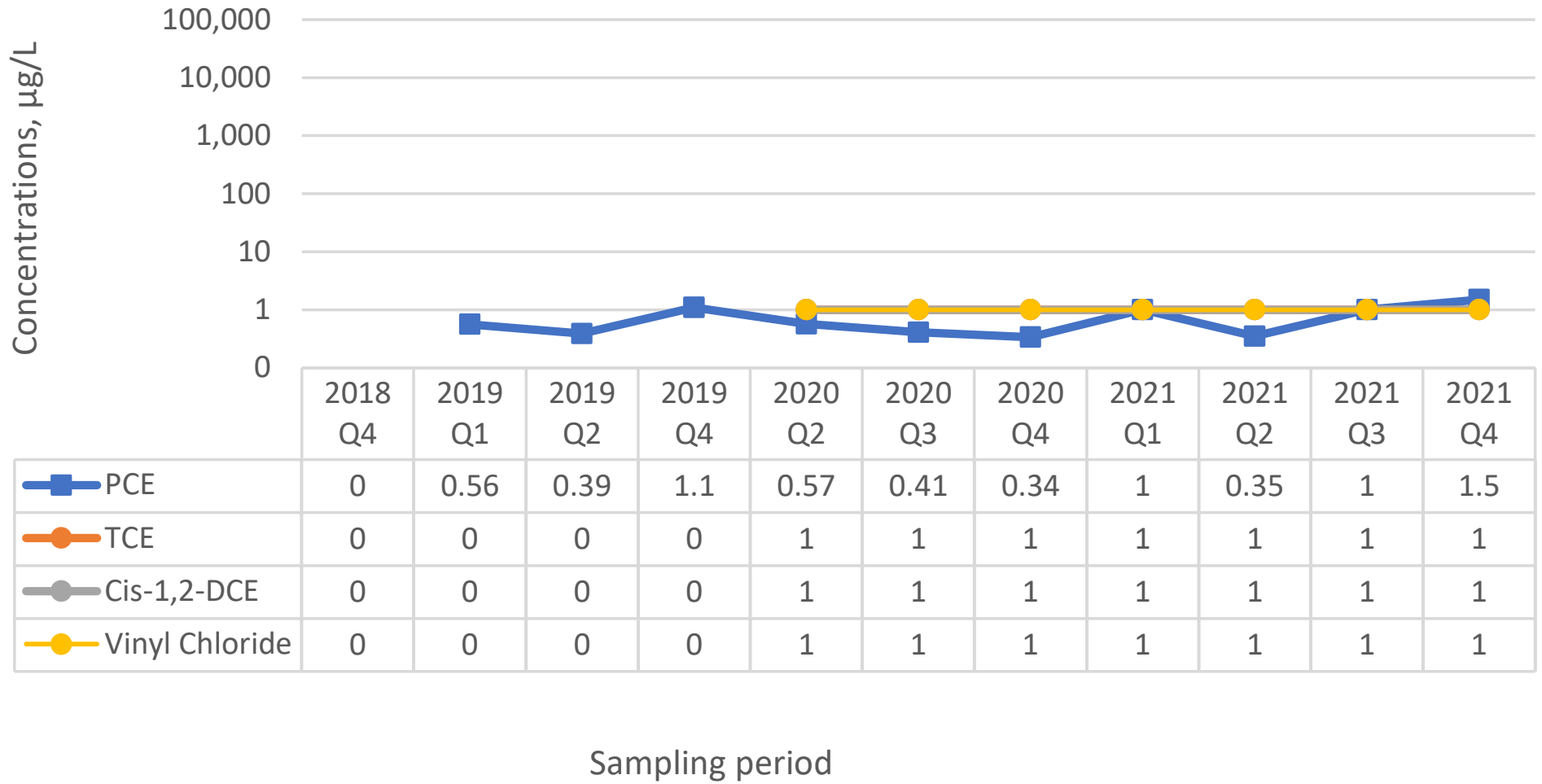
Temporal Variations of VOCs Concentrations
 Active Industrial Uniform Superfund Site #152125
 63 West Merrick Road, Lindenhurst, New York
 HRP# DEC1004.OM

MW-4D



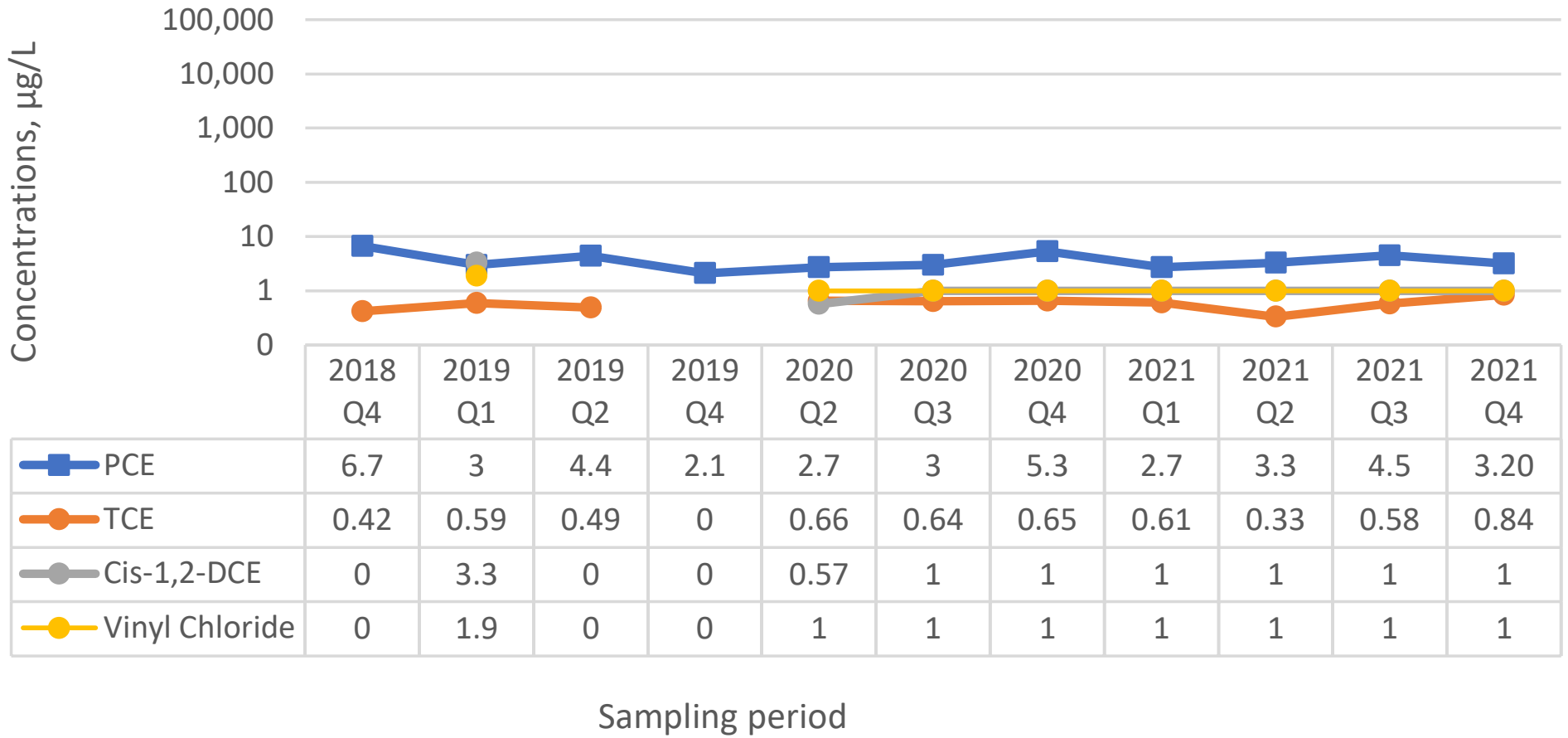
Temporal Variations of VOCs Concentrations
 Active Industrial Uniform Superfund Site #152125
 63 West Merrick Road, Lindenhurst, New York
 HRP# DEC1004.OM

MW-5S



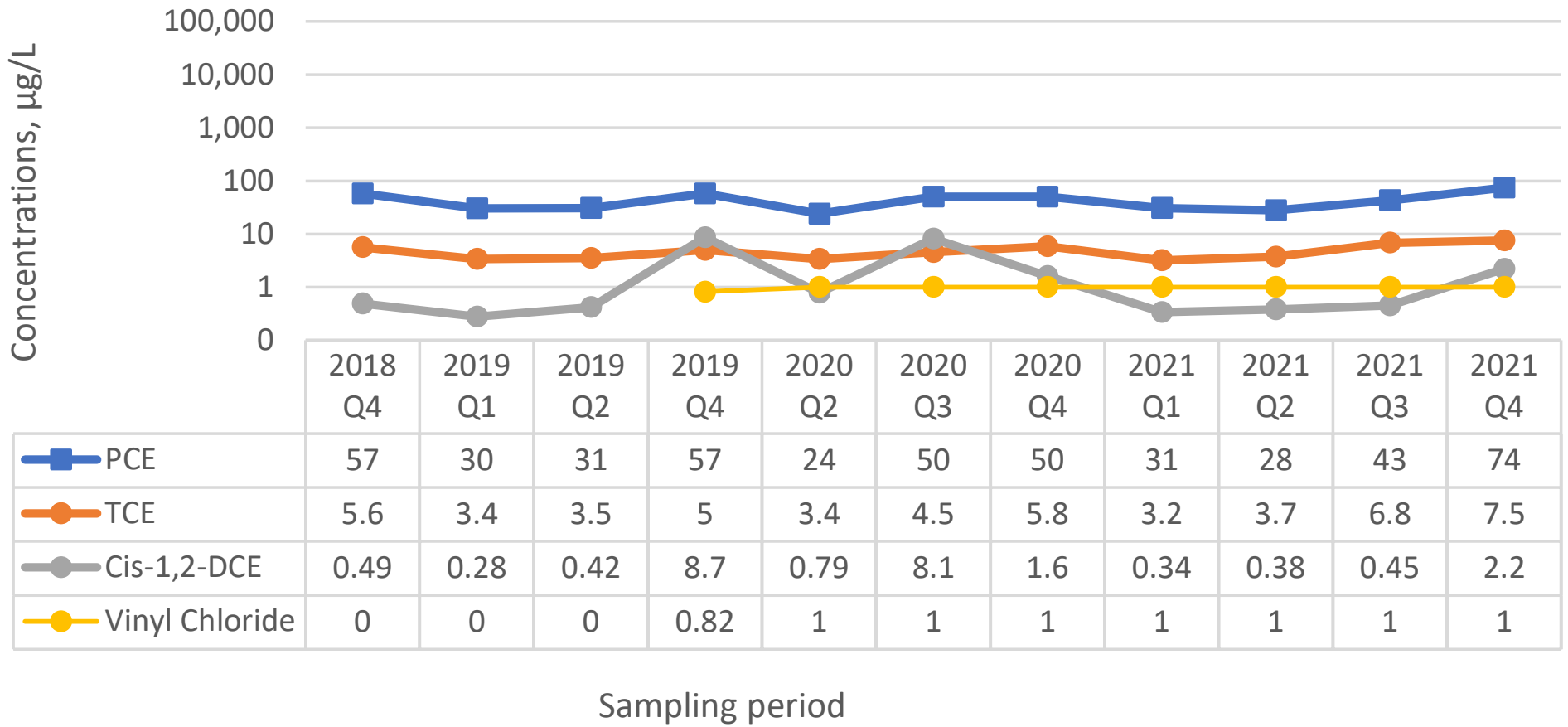
Temporal Variations of VOCs Concentrations
 Active Industrial Uniform Superfund Site #152125
 63 West Merrick Road, Lindenhurst, New York
 HRP# DEC1004.OM

MW-103



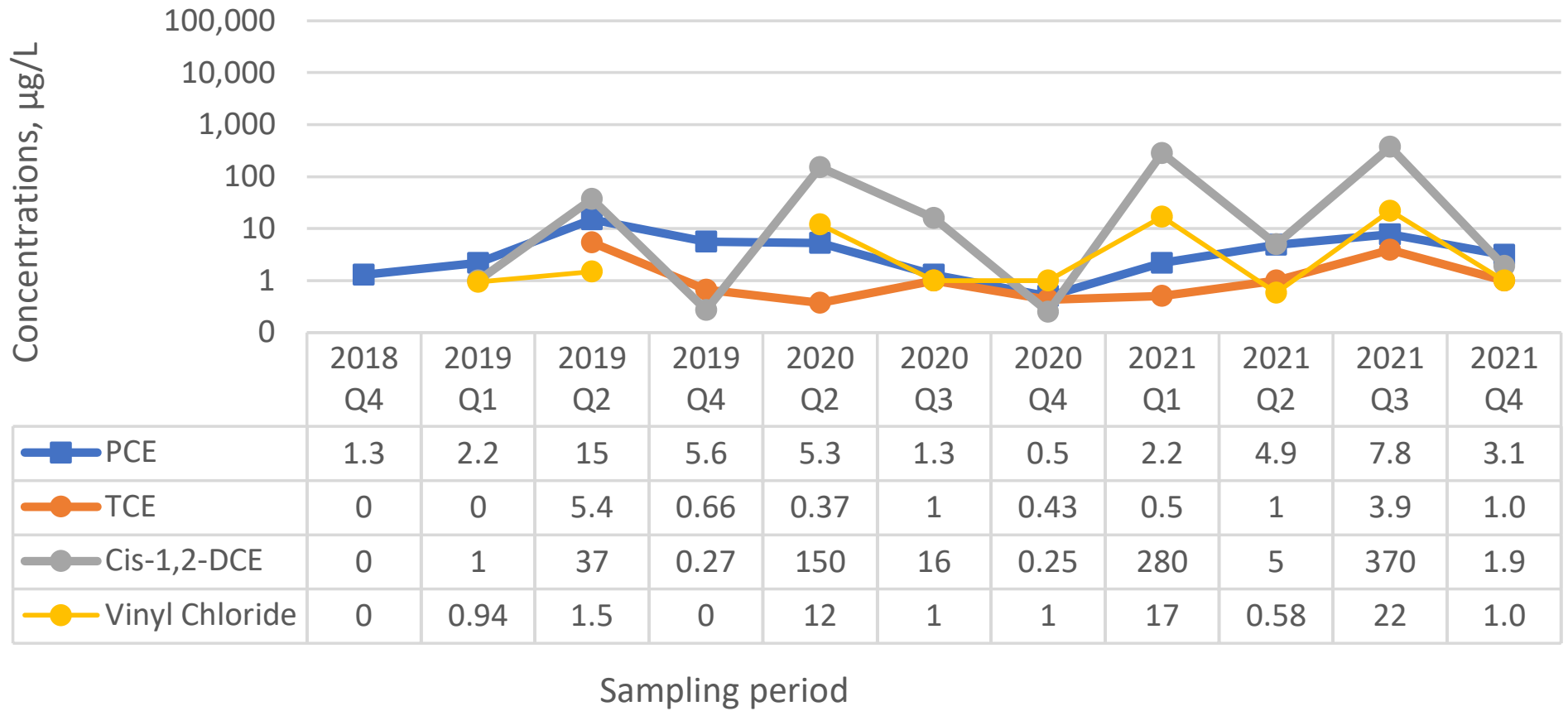
Temporal Variations of VOCs Concentrations
 Active Industrial Uniform Superfund Site #152125
 63 West Merrick Road, Lindenhurst, New York
 HRP# DEC1004.OM

MW-104



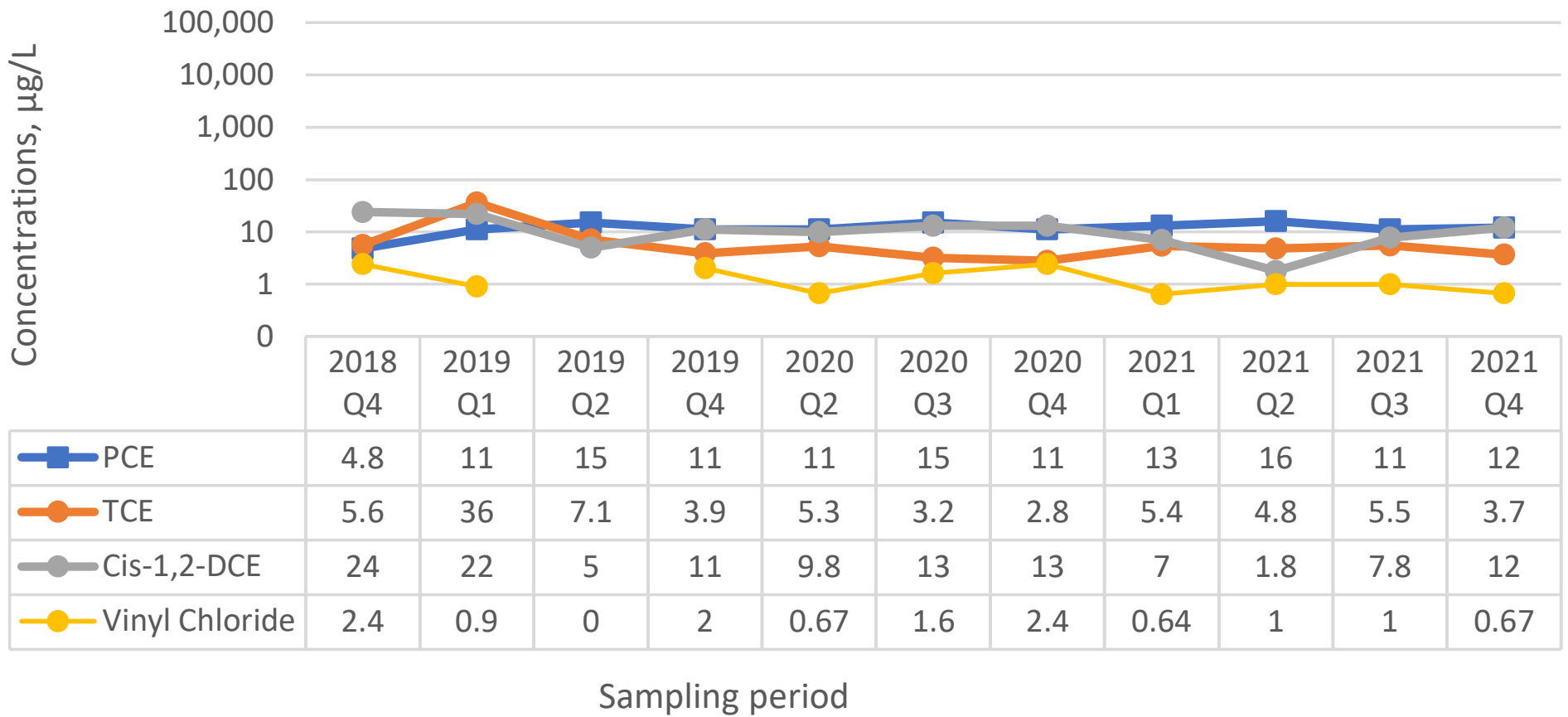
Temporal Variations of VOCs Concentrations
 Active Industrial Uniform Superfund Site #152125
 63 West Merrick Road, Lindenhurst, New York
 HRP# DEC1004.OM

MW-105



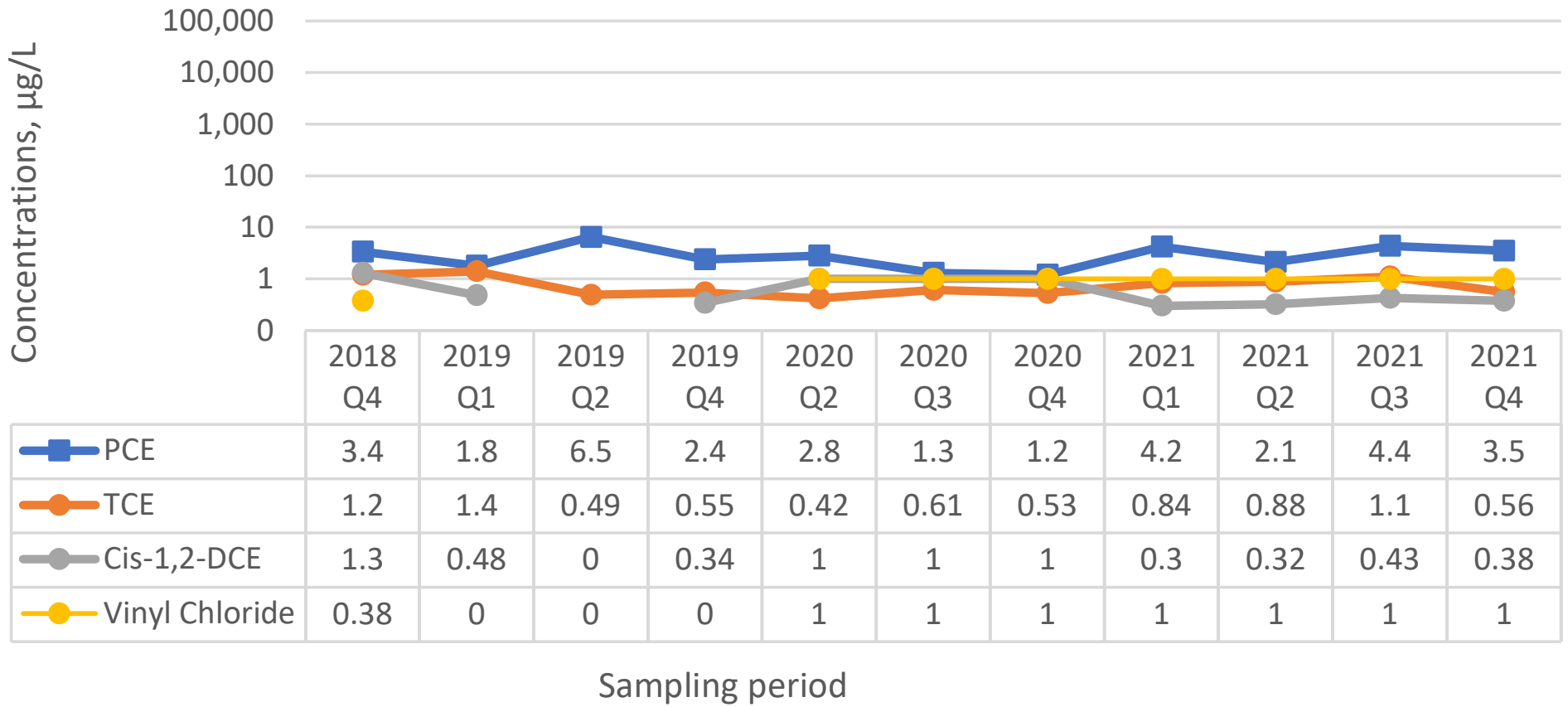
Temporal Variations of VOCs Concentrations
 Active Industrial Uniform Superfund Site #152125
 63 West Merrick Road, Lindenhurst, New York
 HRP# DEC1004.OM

MW-106



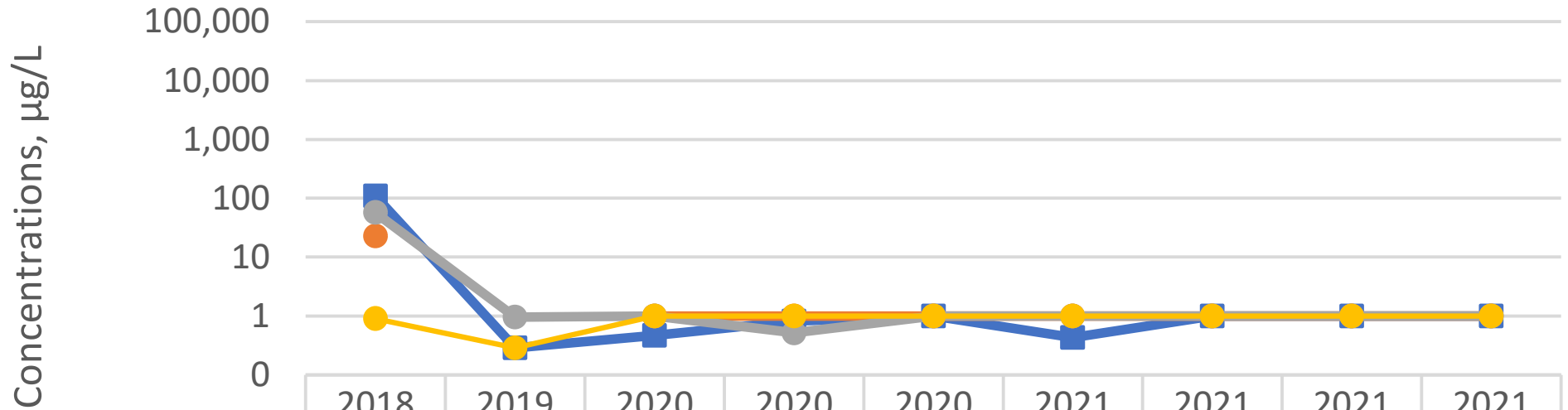
Temporal Variations of VOCs Concentrations
 Active Industrial Uniform Superfund Site #152125
 63 West Merrick Road, Lindenhurst, New York
 HRP# DEC1004.OM

MW-107



Temporal Variations of VOCs Concentrations
 Active Industrial Uniform Superfund Site #152125
 63 West Merrick Road, Lindenhurst, New York
 HRP# DEC1004.OM

RW-1



	2018 Q4	2019 Q4	2020 Q2	2020 Q3	2020 Q4	2021 Q1	2021 Q2	2021 Q3	2021 Q4
PCE	110	0.29	0.47	0.83	1	0.43	1	1	1
TCE	23	0	1	1	1	1	1	1	1
Cis-1,2-DCE	57	0.96	1	0.52	1	1	1	1	1
Vinyl Chloride	0.91	0.29	1	1	1	1	1	1	1

Sampling period

Temporal Variations of VOCs Concentrations
 Active Industrial Uniform Superfund Site #152125
 63 West Merrick Road, Lindenhurst, New York
 HRP# DEC1004.OM

RW-2

