

August 26, 2008

Mr. Peter Dermody
Dermody Consulting
32 Chichester Avenue
Center Moriches, NY 11934

Re: Airport Plaza
East Farmingdale, NY

Dear Mr. Dermody:

The Fairchild Corporation (Fairchild) has agreed to conduct a soil investigation at Airport Plaza located in East Farmingdale, NY (Figure 1) to identify potential sources of volatile organic compounds (VOCs) that could be contributing to the sub-slab vapors detected beneath Airport Plaza. The soil investigation will include drilling 56 borings to a depth of 10 feet below ground surface at the locations shown on Figure 2. The borings will be advanced to a depth of 10 feet using a Geoprobe Mini-Track 5400 using a 2-inch diameter Macro Core sampler. A geologist will record a geologic description of each soil sample on a geologic log. Each Macro Core sample will be cut in half and the organic vapors will be measured with a Photo-Ionization Detector (PID) (11.7 Ev lamp) by passing the probe over the surface of the sample. The concentration of VOCs will be recorded at 2-foot intervals on the geologic log.

One soil sample per boring will be collected from the interval that contains the highest PID measurement. If there is no evidence (>2 ppm over background on the PID) of VOCs through PID detection in a single borehole, a sample will be collected between 5 to 7.5 ft for laboratory analysis. Soil samples identified for laboratory analysis will be collected following NYSDEC guidelines and sent to Eco Test Laboratories, a laboratory certified under the New York State Environmental Laboratory Approval Program (NYSELAP), for complete analysis using USEPA method 8260. The potential number of environmental and quality control samples, container types, sample preservation, and holding times for each analytical method are shown in Table 1 and 2.

One week prior to any drilling at Airport Plaza, the location of each boring will be marked with white paint and New York's One Call System will be contacted. New York's One Call System will also be contacted to request the Mark-Out ticket. Any utilities identified on the Mark-Out ticket but not identified at Airport Plaza will be contacted to confirm they do not have any utilities in the area. In addition, Kimco Realty will be asked to provide utility maps of Airport Plaza to help identify on-site utilities.

Any equipment coming in contact with the boring will be decontaminated using scrub brushes, Alconox, and clean water. Investigation derived waste (IDW) will be containerized in clean 55-

gallon drums and all drill cuttings will be disposed of according to federal, state, and local regulations. Upon the completion of sampling, all borings will be filled with grout and the blacktop surface will be repaired to its prior state.

In addition, one groundwater sample will be collected 5-feet beneath the water table at the location of GP-7 shown on Figure 2 to determine if the sub-slab vapors detected beneath the North Plaza could be coming from groundwater potentially contaminated from offsite sources. The sample will be sent to Eco Test Laboratory for analysis using EPA method 8260.

The data collected during this investigation will be summarized in tables and figures and described in a brief letter report that will be submitted to Dermody Consulting and the New York State Department of Environmental Conservation (NYSDEC).

If you have any questions please call us at (201) 797-7400.

Very truly yours,

MALCOLM PIRNIE, INC.



C. Clayton Hofer
Hydrogeologist



Daniel J. St. Germain, PG, CPG, PHg
Senior Associate

Enclosures

4724010

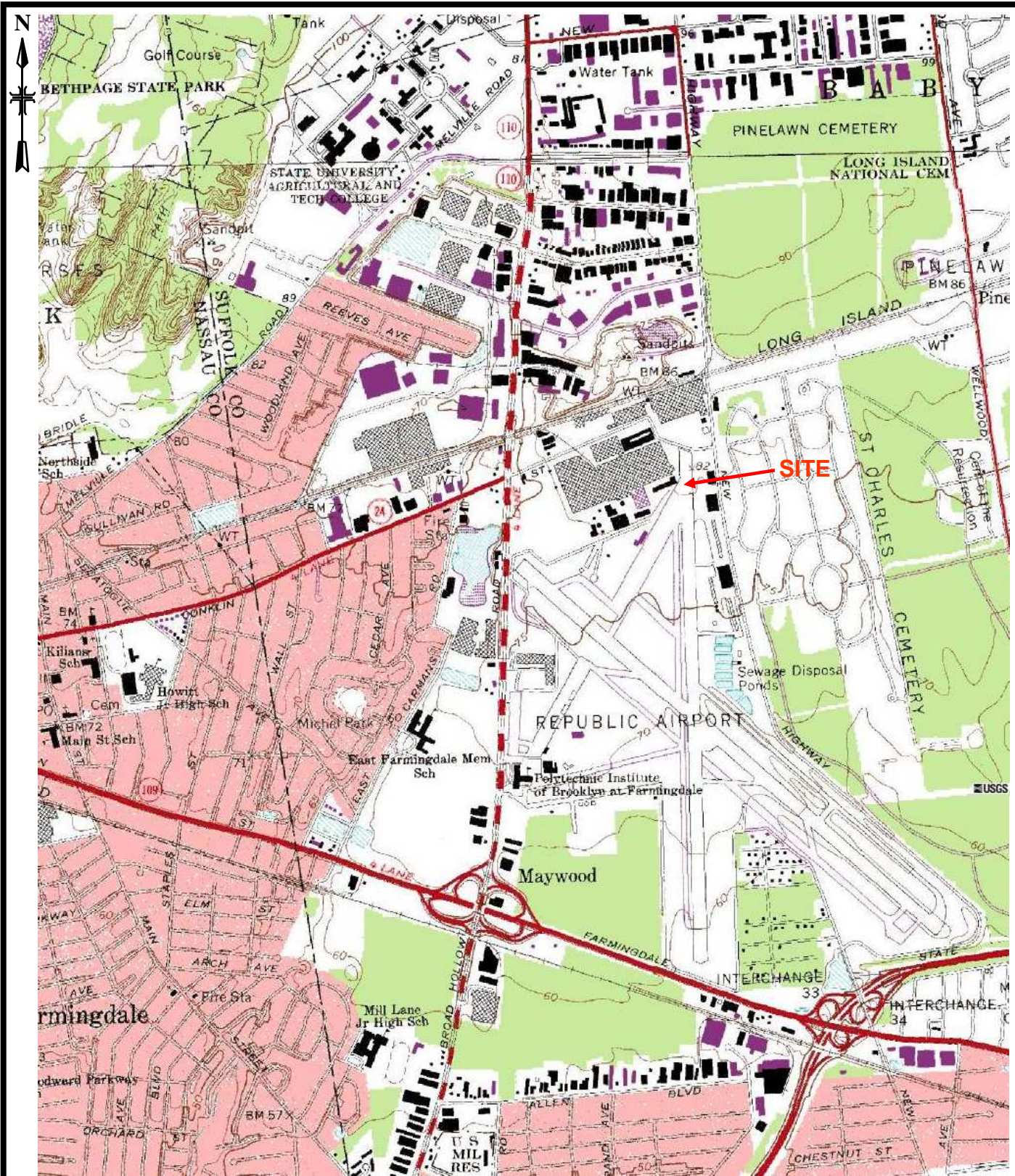
cc: S. Hall, Fairchild (w/ enclosure)

TABLE 1
SOIL SAMPLE ANALYTICAL PARAMETERS, CONTAINERS, PRESERVATIVES, AND HOLDING TIMES
AIRPORT PLAZA
EAST FARMINGDALE, NEW YORK

Media	Analytical Group	Analytical and Preparation Method/SOP Reference	Containers	Field Rinsate Blanks	Field Duplicates	Preservation Requirements	Holding Time
Soil	VOCs	8260	1 -2 oz. Septum Jars Plus a 2oz full glass jar for moisture analysis	2-40ml VOA Vials (HCL to pH <2) 1 per batch of 20 or less	1 -2 oz. Septum Jars Plus a 2oz full glass jar for moisture analysis 1 per batch of 20 or less	Cool to 4°C or (2 to 6°C)	48 hours to extraction or freezing
Water	VOCs	8260	2-40ml VOA Vials (HCL to pH <2)	N/A	N/A	Cool to 4°C or (2 to 6°C)	48 hours to extraction or freezing

TABLE 2
GROUNDWATER QUALITY CONTROL SAMPLE SUMMARY
AIRPORT PLAS
EAST FARMINGDALE, NEW YORK

Media	Analytical Group	No. of Primary Field Samples	No. of Field Duplicates	No. of Field Blanks	No. of Trip Blanks	Total No. of Samples
Soil	VOCs (EPA Method 8260)	57	3	1	1	62
Groundwater	VOCs (EPA Method 8260)	1	0	0	0	1

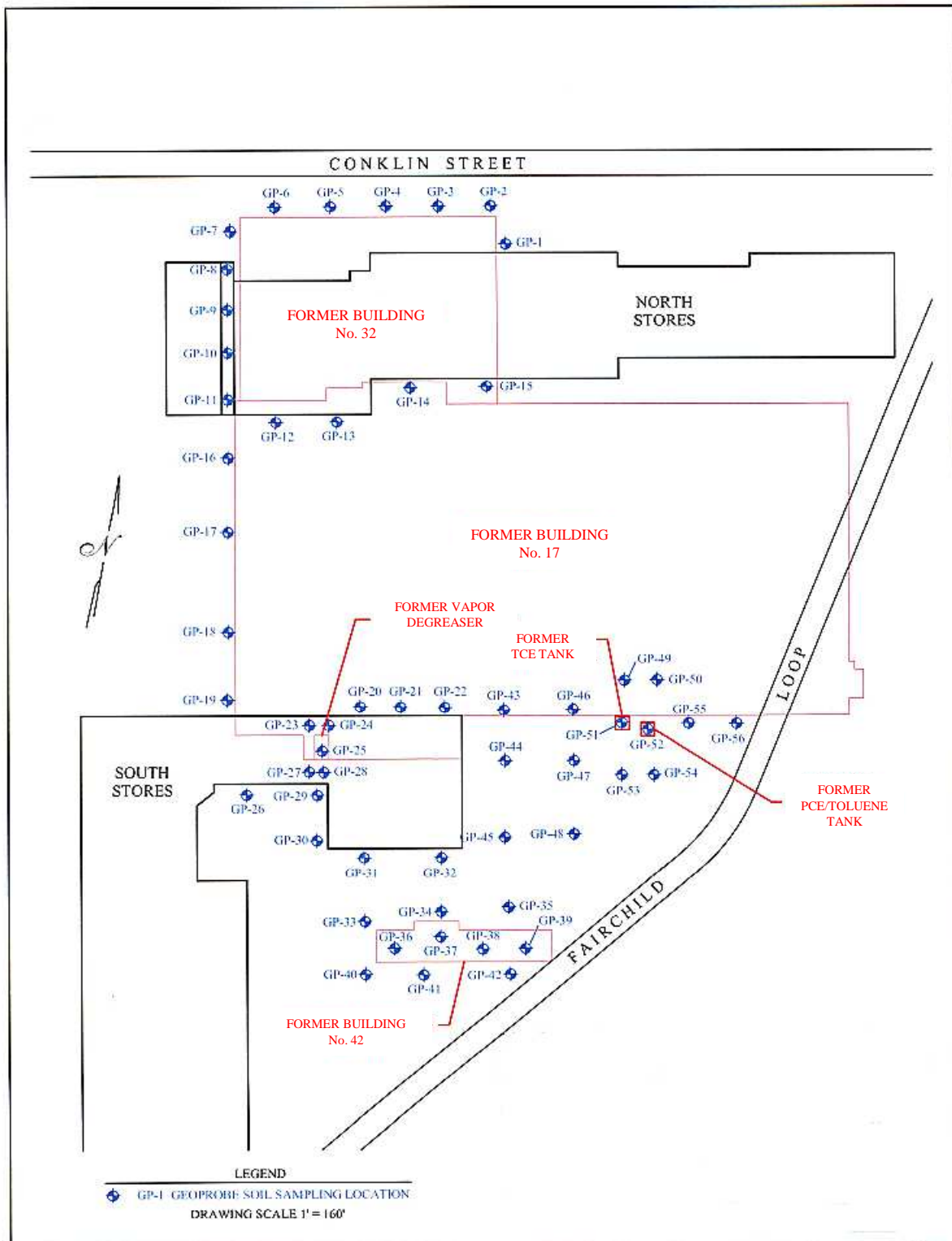


0 300 600 1200 Feet
 APPROXIMATE SCALE

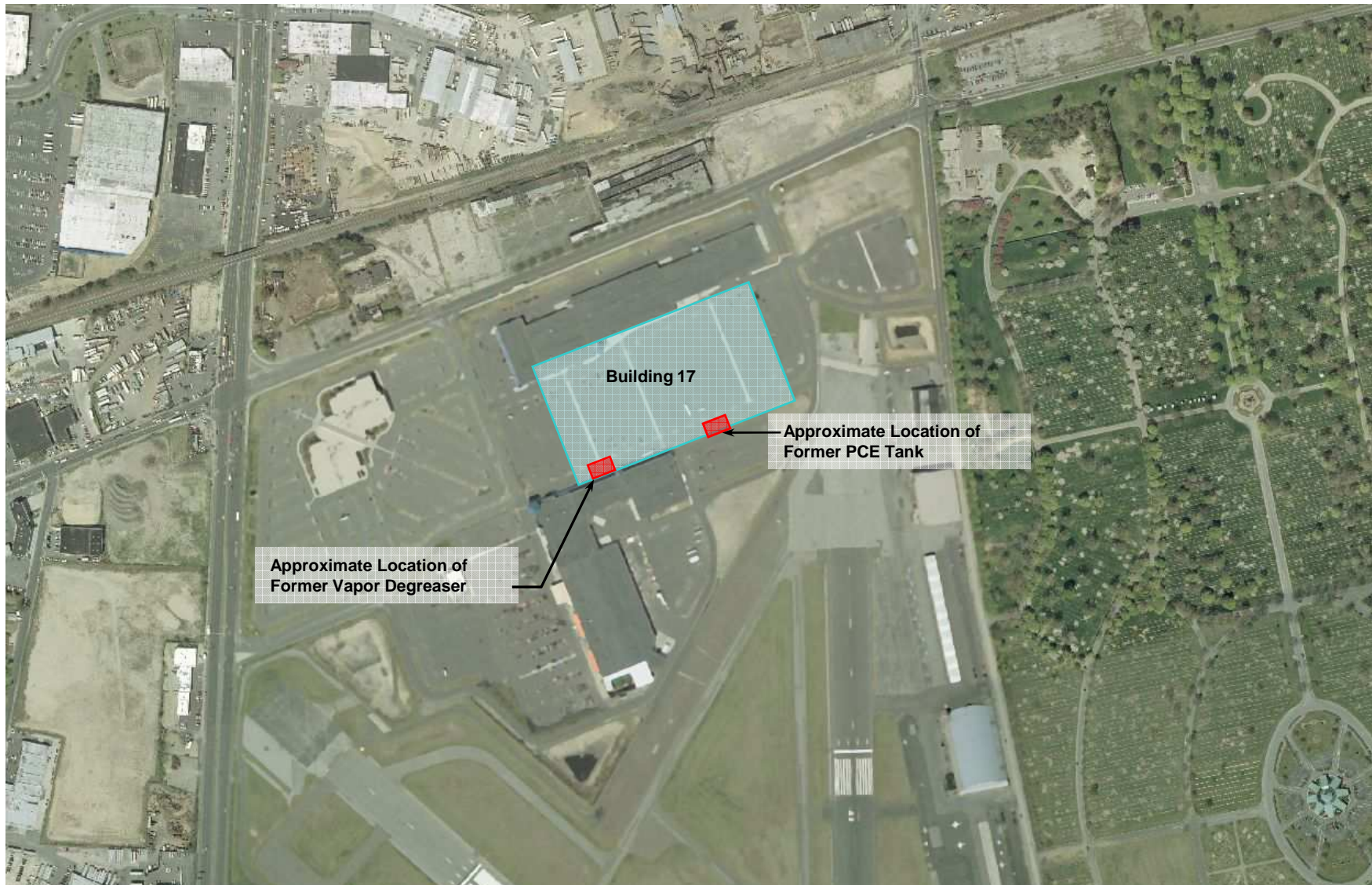


SITE LOCATION
AIRPORT PLAZA
MAIROLL, INC.
EAST FARMINGDALE, NEW YORK

Copyright © 2006
 Malcolm Pirnie, Inc.
FIGURE 1



Source: Dermody Consulting, 2008



2001 Aerial Photo

0 125 250 500 Feet
APPROXIMATE SCALE

**MALCOLM
PIRNIE**

CURRENT AND FORMER SITE LAYOUT
AIRPORT PLAZA
MAIROLL, INC.
EAST FARMINGDALE, NEW YORK

Copyright © 2006
Malcolm Pirnie, Inc.

FIGURE 3