

DAILY OBSERVATION REPORT

Report No.: 42 EA Project File: 1447429 Date: February 27, 2012

EA Engineering, P.C.

6712 Brooklawn Parkway, Suite 104
Syracuse, NY 13211-2158



Site No. 1-52-140

Contractor PM: AECOM – Walter Howard
NYSDEC PM: Jeffrey Dyber
Construction Manager: AECOM - Kent Wagener
Air Monitoring: AECOM
Health & Safety: AECOM

NYSDEC Division of Environmental Remediation
Site Location: Albany St., Babylon, NY (Site No. 1-52-140)

Weather Conditions

Table with 5 columns: General Description, Sunny, am, Sunny, Pm. Rows include Temperature (37 am, 48 Pm) and Wind Direction (10-15 mph SSW am, 15-22 mph SSW Pm).

HEALTH & SAFETY:

(\*If any box(s) below are checked "Yes", list the deviation under the "Items for Concern" section of this report).

Table with 4 columns: Question, \*Yes ( ), No (X), NA ( ). Rows include questions about changes to Health & Safety Plan, exceedances at perimeter, and dust/odor issues.

WASTE HAULING:

(\*If any box(s) below are checked "Yes", list the deviation under the "Items for Concern" section of this report).

Table with 4 columns: Question, \*Yes ( ), No ( ), NA (X). Rows include questions about vehicles with proper D.O.T. numbers and tarping.

Materials Removed From Site:
Disposal Facility: 110 Sand Company
Total Loads (on this date): 0
Total Loads (to date): 1
Total Estimated Daily Weight (tons): 0
Total Approximate\* Weight (tons): 20

\*Actual (total weight) adjusted periodically based on weight tickets submitted by the disposal facilities.

# DAILY OBSERVATION REPORT

Report No.: 42      EA Project File: 1447429      Date: February 27, 2012

## Summary of Events:

- Onsite at 10:30, spoke with Kent Wagoner and Sam Rowe (AECOM) regarding planned work for the day. Posillico Construction (Posillico) and Layne Drilling (Layne) already onsite.
- Prior to the start of work, AECOM conducted health and safety meeting, discussed overall goals for day, and setup upwind and downwind air monitoring stations. Upwind station installed at northwest corner of Suffolk County Water Authority (SCWA) property and downwind station along SCWA southern fence line. Air monitoring was performed in accordance with the Contract Documents and AECOM's Remedial Action Work Plan (RAWP): Section 4.2 – Dust Monitoring, Section 5.0 – Air Monitoring Plan. No exceedances were recorded.
- No drilling activities occurred today. Layne continued to install a new hydraulic gear box on the drill rig. Drilling activities will resume on 28 February 2012.
- Posillico continued excavating airline trench from western edge of SCWA property to 50-ft west of the treatment system pad. Excavated area included airline sump (Refer to Submittal No. 15050-004A Revised Sump Location). A backhoe was used to excavate the DDC airline trench and sump area. The trench bottom was excavated on a grade, to promote drainage of condensate moisture to airline sumps (see Proposed Pipe Invert Elevations, Submittal 15050-001B). Slope of trench from sump area to treatment system pad was pitched toward the sumps (to the west) for condensate drainage. Trench bottom was relatively smooth and free of rock, asphalt, and debris. Excavation activities were completed in accordance with RAWP Section 2.3.4 – Utility and Pipe Excavation Plan, Contract Document Section 02220 – Excavation and Subgrade Preparation, and Section 02225 – Trenching.
- Posillico continued to prefabricate pipe lengths and fittings for airline sumps and treatment trailer connections on SCWA property using heat fusion welds (RAWP Section 2.3.4.1 – Piping Installation). Piping and sumps will be installed tomorrow.
- Over the weekend (25 – 26 February 2012) copper wiring, high-density polyethylene (HDPE) piping saw, and a gas powered broom sweeper were stolen from Posillico's storage container. Posillico notified the Suffolk County Police Department and issued a police report.
- Posillico received sump man-way covers.
- Excavation area perimeter secured with orange fencing. Site fence and gates secured upon departure. Off-site at 15:30.

## VISITORS TO SITE:

NAME	Representing	Entered Exclusion/CRZ Zone	
		Yes ( )	No ( )
None			

## PROJECT SCHEDULE:

- DDC well installation (16 January – 02 April 2012).
- Install underground piping (30 January – 02 March 2012)
- Install airline sump (27 February - 02 March 2012)

## ISSUES PENDING:

- None

# DAILY OBSERVATION REPORT

Pg. 3 of 7

Report No.: 42      EA Project File: 1447429      Date: February 27, 2012

## ITEMS OF CONCERN:

- None

**Site Representative:** Robert Peterson

**Date:** 27 February 2012



Report No.: 42 EA Project File: 1447429 Date: February 27, 2012

**Photographs**



**View of new hydraulic pump gear box.**



**Posillico excavating airline trench and sump, standing at DDC-06 looking east.**



Report No.: 42 EA Project File: 1447429 Date: February 27, 2012



Airline trench extending east towards treatment system pad.



View of orange fencing around open excavation.

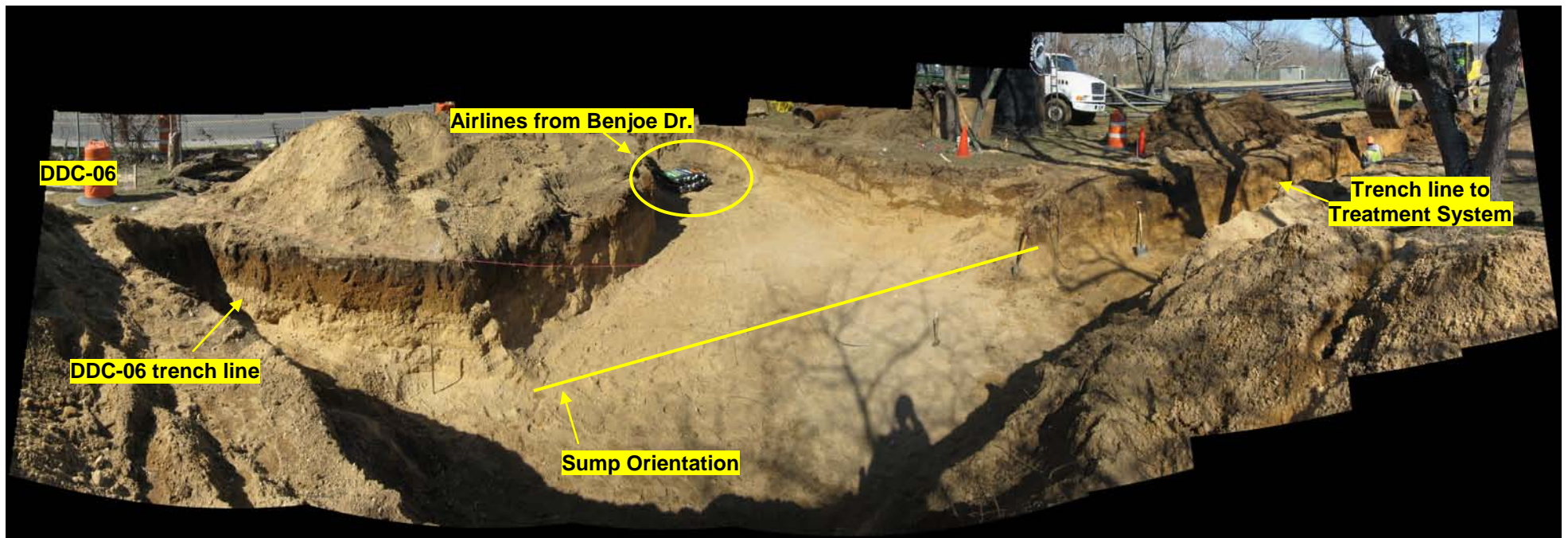
Report No.: 42 EA Project File: 1447429 Date: February 27, 2012



View of open excavation and orange fencing.



Report No.: 42 EA Project File: 1447429 Date: February 27, 2012



Panoramic view of airline trench and sump.

DAILY OBSERVATION REPORT

Report No.: 43 EA Project File: 1447429 Date: February 28, 2012

EA Engineering, P.C.

6712 Brooklawn Parkway, Suite 104
Syracuse, NY 13211-2158



Site No. 1-52-140

Contractor PM: AECOM - Walter Howard
NYSDEC PM: Jeffrey Dyber
Construction Manager: AECOM - Kent Wagener
Air Monitoring: AECOM
Health & Safety: AECOM

NYSDEC Division of Environmental Remediation
Site Location: Albany St., Babylon, NY (Site No. 1-52-140)

Weather Conditions

Table with 5 columns: General Description, Sunny, am, Sunny, Pm. Rows include Temperature (40 am, 54 Pm) and Wind Direction (8-10 mph WNW am, 12-15 mph WNW Pm).

HEALTH & SAFETY:

(\*If any box(s) below are checked "Yes", list the deviation under the "Items for Concern" section of this report).

Table with 4 columns: Question, \*Yes ( ), No (X), NA ( ). Rows ask about changes to Health & Safety Plan, exceedances at perimeter, and dust/odor issues.

WASTE HAULING:

(\*If any box(s) below are checked "Yes", list the deviation under the "Items for Concern" section of this report).

Table with 4 columns: Question, \*Yes ( ), No ( ), NA (X). Rows ask about vehicles with proper D.O.T. numbers and tarping.

Materials Removed From Site:
Disposal Facility: 110 Sand Company
Total Loads (on this date): 0
Total Loads (to date): 1
Total Estimated Daily Weight (tons): 0
Total Approximate\* Weight (tons): 20

\*Actual (total weight) adjusted periodically based on weight tickets submitted by the disposal facilities.



Report No.: 43

EA Project File:

1447429

Date: February 28, 2012

**Summary of Events:**

- Onsite at 07:00, spoke with Kent Wagoner and Sam Rowe (AECOM) regarding planned work for the day. Posillico Construction (Posillico) and Layne Drilling (Layne) already onsite.
- Prior to the start of work, AECOM conducted health and safety meeting, discussed overall goals for day, and setup upwind and downwind air monitoring stations. Upwind station installed at northwest corner of Suffolk County Water Authority (SCWA) property and downwind station along SCWA southern fence line. Air monitoring was performed in accordance with the Contract Documents and AECOM's Remedial Action Work Plan (RAWP): Section 4.2 – Dust Monitoring, Section 5.0 – Air Monitoring Plan. No exceedances were recorded.
- No drilling activities occurred today. Layne finished installing the new hydraulic gear box on the drill rig. Drilling activities will resume tomorrow (29 February 2012).
- Posillico finished excavating airline trench to DDC-06 well casing (Refer to Submittal No. 15050-004A Revised Sump Location). The trench bottom was excavated on a grade, to promote drainage of condensate moisture to airline sump. Trench bottom was relatively smooth and free of rock, asphalt, and debris. Excavation activities were completed in accordance with RAWP Section 2.3.4 – Utility and Pipe Excavation Plan, Contract Document Section 02220 – Excavation and Subgrade Preparation, and Section 02225 – Trenching.
- Prior to high-density polyethylene (HDPE) pipe installation, Posillico prefabricated pipe lengths and fittings on SCWA property using heat fusion welds (RAWP Section 2.3.4.1 – Piping Installation). Posillico began installing HDPE piping from western edge of SCWA property (Albany Ave) to sump collection area. Sumps are associated with 6-in. air return lines to allow for condensate accumulation. Four-in. air supply lines do not require sumps due to a condensate knock-out tank, heat exchanger, and duct heater located within the treatment system. All three components will remove condensate and reduce the relative humidity of supplied air.
- DDC-06, DDC-07, and DDC-08 6-in. air return lines were extended through the trench line to the sump collection area (Refer to Submittal No. 15050-004A for sump orientation). Two 6-in. spares were installed and bypassed the sump collection area. Sumps for spare lines will be installed at a later date if additional DDC wells are added. DDC-06 return line capped above ground surface near well head. Note: DDC-05 and DDC-06 well heads and associated air lines will be installed above ground. Air line and well head connections will be installed at a later date.
- Piping layout was arranged as one row, with each 6-in. air line connecting to an independent sump (Refer to Submittal No. 15050-005A Typical Sump Detail). 6-in. air lines were extended from the sumps to the east towards the treatment system pad. Negative slope towards sumps was maintained throughout trench line. Piping extensions were connected in the trench line using Type A Couplers via Electrofusion (See Submittal No. 15064-001A for specs) and heat fusion welds. Copper tracer wire was continuously placed through the trench. No damaged piping/fittings were used throughout the process. Pressure testing of air lines from western SCWA property line to Treatment Systems will be conducted once air line installation is complete and backfilled. Piping installation was completed in accordance with RAWP Section 2.3.4.1 – Piping Installation and Section 02605 – Underground Piping of the Contract Documents.
- Each sump pump will be connected to a 3/4-in. HDPE condensate drainage line, which will remove condensate from sumps and drain into DDC-06. Line will be installed tomorrow. Sump and condensate line connections will be installed at a later date.
- Posillico received pre-cast concrete sump vaults (Refer to Submittal No. 15050-002A Sump Vaults and Man-way Covers).
- Asplundh Electric (Long Island Power Authority [LIPA] Subcontractor) onsite to connect transformer supply lines to overhead electrical lines. AECOM will issue a service order to LIPA in order to setup an account and provide power to the transformer.
- Tomorrow, Posillico will install 6-in. air supply lines and sumps for DDC-09 and DDC-10. Four-in. air supply lines and two additional sets of spares will be extended through the trench line later this week.

# DAILY OBSERVATION REPORT

Report No.: 43                      EA Project File: 1447429                      Date: February 28, 2012

- Excavation area secured with orange fencing. Site fence and gates secured upon departure. Offsite at 16:00.

## VISITORS TO SITE:

NAME	Representing	Entered Exclusion/CRZ Zone	
None		Yes ( )	No ( )

## PROJECT SCHEDULE:

- DDC well installation (16 January – 02 April 2012).
- Install underground piping (30 January – 02 March 2012)
- Install airline sumps (27 February - 02 March 2012)

## ISSUES PENDING:

- None

## ITEMS OF CONCERN:

- None

Site Representative:                      Robert Peterson

Date: 28 February 2012



Report No.: 43

EA Project File: 1447429

Date: February 28, 2012

Photographs



**View of 6-in. Type A Couplers being connected via Electrofusion.**



**View of air line cluster from Benjoe Dr.**



Report No.: 43

EA Project File:

1447429

Date: February 28, 2012



View of DDC-06 and associated sump.



View of 90-degree 6-in. return line at DDC-06.

Report No.: 43

EA Project File:

1447429

Date: February 28, 2012



View of sump collection area.



View of DDC-06, DDC-07, and DDC-08 sumps.

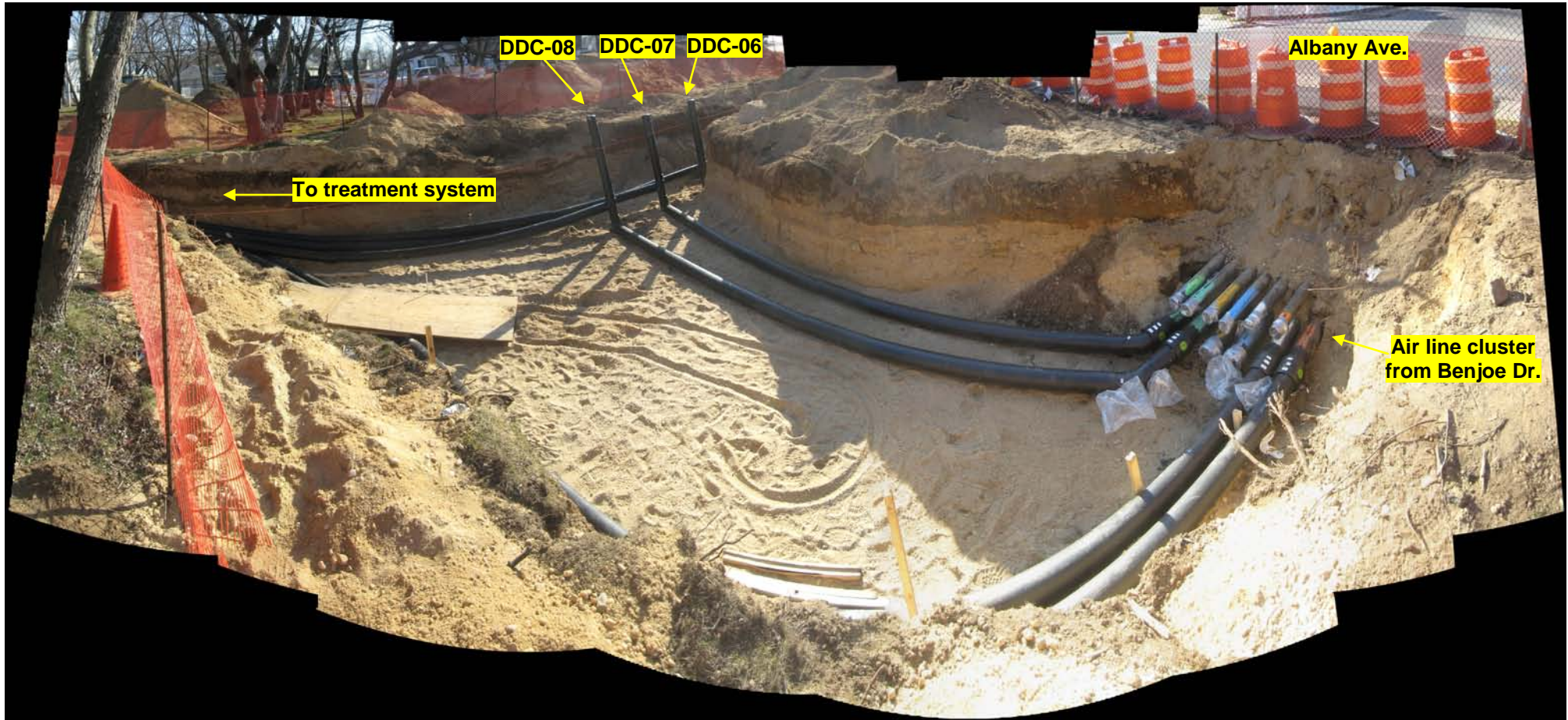


Report No.: 43

EA Project File:

1447429

Date: February 28, 2012



Panoramic view of sump collection area.



DAILY OBSERVATION REPORT

Report No.: 44 EA Project File: 1447429 Date: February 29, 2012

EA Engineering, P.C.

6712 Brooklawn Parkway, Suite 104
Syracuse, NY 13211-2158



Site No. 1-52-140

Contractor PM: AECOM – Walter Howard
NYSDEC PM: Jeffrey Dyber
Construction Manager: AECOM - Kent Wagener
Air Monitoring: AECOM
Health & Safety: AECOM

NYSDEC Division of Environmental Remediation
Site Location: Albany St., Babylon, NY (Site No. 1-52-140)

Weather Conditions

Table with 5 columns: General Description, Overcast, am, Overcast/Rain, Pm. Rows include Temperature (41 am, 44 Pm) and Wind Direction (9-10 mph W am, 10-15 mph W Pm).

HEALTH & SAFETY:

(\*If any box(s) below are checked "Yes", list the deviation under the "Items for Concern" section of this report).

Table with 4 columns: Question, \*Yes ( ), No (X), NA ( ). Rows include questions about changes to Health & Safety Plan, exceedances at perimeter, and dust/odor issues.

WASTE HAULING:

(\*If any box(s) below are checked "Yes", list the deviation under the "Items for Concern" section of this report).

Table with 4 columns: Question, \*Yes ( ), No ( ), NA (X). Rows include questions about vehicles with proper D.O.T. numbers and tarping.

Materials Removed From Site:
Disposal Facility: 110 Sand Company
Total Loads (on this date): 0
Total Loads (to date): 1
Total Estimated Daily Weight (tons): 0
Total Approximate\* Weight (tons): 20

\*Actual (total weight) adjusted periodically based on weight tickets submitted by the disposal facilities.

# DAILY OBSERVATION REPORT

Pg. 2 of 9

Report No.: 44

EA Project File:

1447429

Date: February 29, 2012

## Summary of Events:

- Onsite at 07:00, spoke with Kent Wagoner and Sam Rowe (AECOM) regarding planned work for the day. Posillico Construction (Posillico) and Layne Drilling (Layne) already onsite.
- Prior to the start of work, AECOM conducted health and safety meeting, discussed overall goals for day, and setup upwind and downwind air monitoring stations. Upwind station installed along western edge of Albany Ave. and downwind station near construction trailers. Air monitoring was performed in accordance with the Contract Documents and AECOM's Remedial Action Work Plan (RAWP): Section 4.2 – Dust Monitoring, Section 5.0 – Air Monitoring Plan. No exceedances were recorded.
- Layne installed 10-ft of 24-in. diameter casing at DDC-05. During installation, damper gear and housing for hydraulic pump were sheared off. Drilling activities are on standby until Layne receives parts and repairs can be made.
- Prior to high-density polyethylene (HDPE) pipe installation, Posillico prefabricated pipe lengths and fittings on SCWA property using heat fusion welds (RAWP Section 2.3.4.1 – Piping Installation). Posillico began installing HDPE piping from western edge of SCWA property (Albany Ave) to sump collection area. Sumps are associated with 6-in. air return lines to allow for condensate accumulation. Four-in. air supply lines do not require sumps due to a condensate knock-out tank, heat exchanger, and duct heater located within the Treatment System. All three components will remove condensate and reduce the relative humidity of supplied air.
- 6-in. air return lines for DDC-05, DDC-09, and DDC-10 were extended through the trench line to the sump collection area (Refer to Submittal No. 15050-004A for sump orientation). DDC-05 return line was capped approximately 20-feet south of DDC-05 well. Line will be extended to DDC-05 once well is installed. A 4-in. air supply line was installed to DDC-06. DDC-06 supply and return lines capped above ground surface. Note: DDC-05 and DDC-06 well heads and associated air lines will be installed above ground. Air line and well head connections will be installed at a later date. All air lines were extended from sumps to the east towards the treatment system pad.
- Piping layout was arranged as one row, with each 6-in. air line connecting to an independent sump (Refer to Submittal No. 15050-005A Typical Sump Detail). Six-in. air lines were extended from the sumps to the east towards the treatment system pad. Negative slope towards sumps was maintained throughout trench line. Piping extensions were connected in the trench line using Type A Couplers via Electrofusion (See Submittal No. 15064-001A for specs) and heat fusion welds. Copper tracer wire was continuously placed through the trench. No damaged piping/fittings were used throughout the process. Pressure testing of air lines from west side of Albany Ave to Treatment System will be conducted once air line installation is complete and backfilled. Piping installation was completed in accordance with RAWP Section 2.3.4.1 – Piping Installation and Section 02605 – Underground Piping of the Contract Documents.
- A main condensate drainage line was installed from sumps to DDC-06 (Refer to Submittal No. 15050-005A). Line was installed at 3.5-ft below ground surface (bgs) and level. Connections at each sump and DDC-06 well will be installed at a later date.
- Posillico backfilled DDC-06 trench line to grade and partially backfilled sump collection area. Excavated material (fine-coarse sand) was used as backfill. Material contained no rock, asphalt, or sharp edged debris. Backfilled material was compacted in 12-in. lifts using plate compactor. Backfilling was done in accordance with RAWP Sections 2.3.4, 2.3.4.1, and 2.3.4.2 and Contract Document Sections 02111, 02200, 02220, and 02225.
- Gray Electric installed electric conduit piping at each sump. Conduit and electric will be extended from sumps to treatment system pad once trenching is complete.
- Tomorrow, Posillico will install 4-in. air supply lines and backfill sump collection area.
- Excavation area secured with orange fencing. Site fence and gates secured upon departure. Off-site at 15:30.

# DAILY OBSERVATION REPORT

Report No.: 44

EA Project File: 1447429

Date: February 29, 2012

## VISITORS TO SITE:

NAME	Representing	Entered Exclusion/CRZ Zone	
None		Yes ( )	No ( )

## PROJECT SCHEDULE:

- DDC well installation (16 January – 02 April 2012).
- Install underground piping (30 January – 02 March 2012)
- Install airline sumps (27 February - 02 March 2012)

## ISSUES PENDING:

- None

## ITEMS OF CONCERN:

- None

Site Representative:

Robert Peterson

Date: 29 February 2012



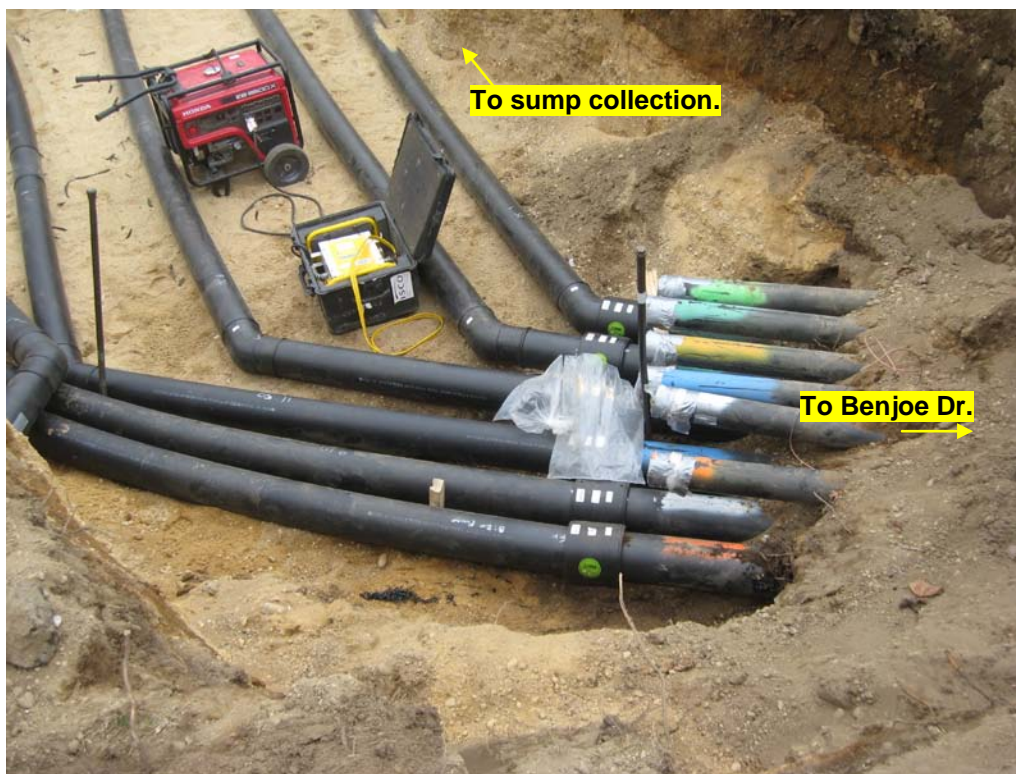


Report No.: 44

EA Project File: 1447429

Date: February 29, 2012

Photographs



View of 6-in. air lines from Benjoe Dr. and 45° elbow fittings.



View of sump collection area, looking south.



Report No.: 44

EA Project File:

1447429

Date: February 29, 2012



View of sump collection area, at DDC-06 looking northeast.



Posillico backfilling around 6-in. return lines.

Report No.: 44

EA Project File:

1447429

Date: February 29, 2012



View of DDC-06 with 4-in. air supply and 6-in. air return lines. Note: Black condensate line attached to well.



View of electrical conduit piping attached to sump.



Report No.: 44

EA Project File:

1447429

Date: February 29, 2012



View of electrical conduit piping attached to sumps.



View of backfilled/compacted DDC-06 trench line.



Report No.: 44

EA Project File:

1447429

Date: February 29, 2012



View of partially backfilled/compacted sump collection area.



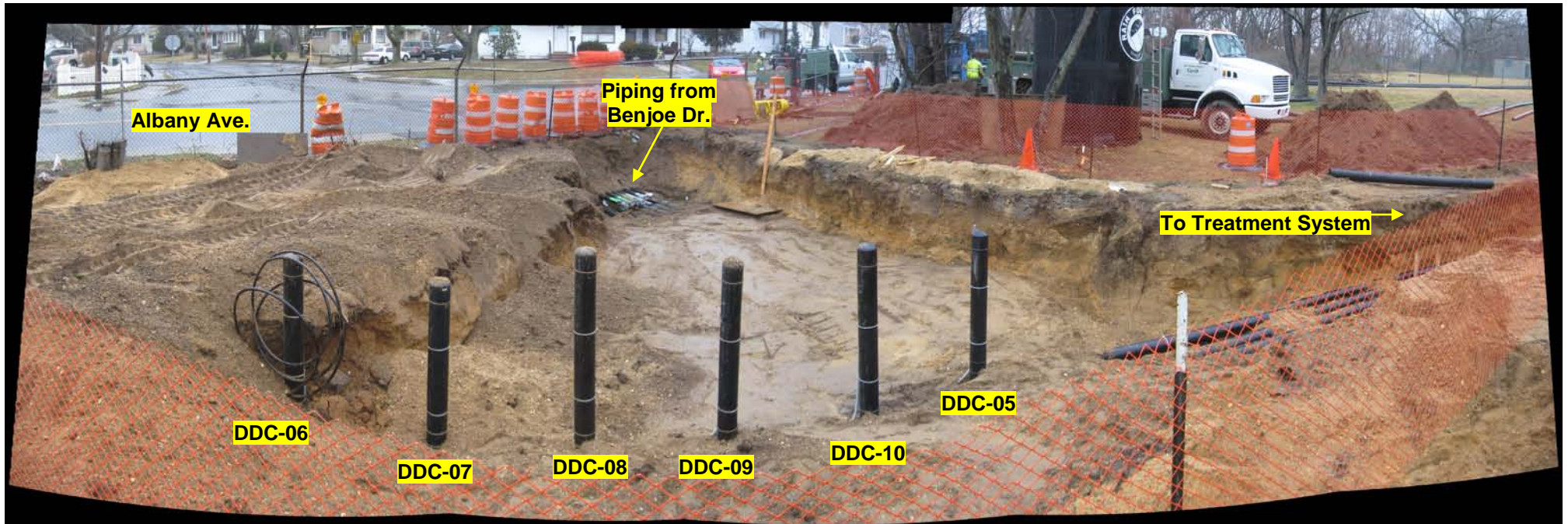
6-in. air return lines extending through trench line, looking west.

Report No.: 44

EA Project File:

1447429

Date: February 29, 2012



Panoramic view of sump collection area.



DAILY OBSERVATION REPORT

Report No.: 45 EA Project File: 1447429 Date: March 01, 2012

EA Engineering, P.C.

6712 Brooklawn Parkway, Suite 104
Syracuse, NY 13211-2158



Site No. 1-52-140

Contractor PM: AECOM – Walter Howard
NYSDEC PM: Jeffrey Dyber
Construction Manager: AECOM - Kent Wagener
Air Monitoring: AECOM
Health & Safety: AECOM

NYSDEC Division of Environmental Remediation
Site Location: Albany St., Babylon, NY (Site No. 1-52-140)

Weather Conditions

Table with 5 columns: General Description, Overcast, am, Overcast, Pm. Rows include Temperature (35 am, 39 Pm) and Wind Direction (5 mph W am, 5 mph W Pm).

HEALTH & SAFETY:

(\*If any box(s) below are checked "Yes", list the deviation under the "Items for Concern" section of this report).

- Were there any changes to the Health & Safety Plan? \*Yes ( ) No (X) NA ( )
Were there any exceedances at the perimeter Air: action level reported on this date? \*Yes ( ) No (X) NA ( )
Were there any dust/odor issues reported or observed on this date? \*Yes ( ) No (X) NA ( )

WASTE HAULING:

(\*If any box(s) below are checked "Yes", list the deviation under the "Items for Concern" section of this report).

- Were there any vehicles that did not display proper D.O.T. numbers and placards? \*Yes ( ) No ( ) NA (X)
Were there any vehicles which were not tarped? \*Yes ( ) No ( ) NA (X)

Materials Removed From Site:
Disposal Facility: 110 Sand Company
Total Loads (on this date): 0
Total Loads (to date): 1
Total Estimated Daily Weight (tons): 0
Total Approximate\* Weight (tons): 20

\*Actual (total weight) adjusted periodically based on weight tickets submitted by the disposal facilities.



Report No.: 45

EA Project File:

1447429

Date: March 01, 2012

**Summary of Events:**

- Onsite at 07:00, spoke with Kent Wagoner and Sam Rowe (AECOM) regarding planned work for the day. Posillico Construction (Posillico) already onsite.
- Prior to the start of work, AECOM conducted health and safety meeting, discussed overall goals for day, and setup upwind and downwind air monitoring stations. Upwind station installed along western edge of Albany Ave and downwind station near construction trailers. Air monitoring was performed in accordance with the Contract Documents and AECOM’s Remedial Action Work Plan (RAWP): Section 4.2 – Dust Monitoring, Section 5.0 – Air Monitoring Plan. No exceedances were recorded.
- Drilling activities are on standby until hydraulic pump is repaired. Drilling is estimated to resume early next week.
- Posillico excavated a trench line from sump collection area to DDC-05. The trench bottom was excavated on a grade, to promote drainage of condensate moisture to airline sump. Trench bottom was relatively smooth and free of rock, asphalt, and debris. Excavation activities were completed in accordance with RAWP Section 2.3.4 – Utility and Pipe Excavation Plan, Contract Document Section 02220 – Excavation and Subgrade Preparation, and Section 02225 – Trenching.
- Prior to high-density polyethylene (HDPE) pipe installation, Posillico prefabricated pipe lengths and fittings on Suffolk County Water Authority (SCWA) property using heat fusion welds (RAWP Section 2.3.4.1 – Piping Installation). Posillico installed 4-in. air supply lines from western edge of SCWA property (Albany Ave) to approximately 50-ft west of the treatment system pad. The 4-in. lines were placed 5-feet to the north of DDC-05 sump, bypassing the sump collection area (Refer to Submittal No. 15050-004A Sump Location). Four-in. and 6-in. lines merged together to the east of the sump collection area and extended towards the treatment system pad. Piping layout was arranged as two rows (6-in. pipes placed on bottom, 4-in. lines on top). Approximately 6-in. of compacted soil were placed between 6-in. and 4-in. pipes. In addition, 4-in. and 6-in. air lines were extended to DDC-05. Both lines were capped above ground surface, approximately 2-ft south of DDC-05. Piping will not obstruct ongoing drilling activities at DDC-05. Note: 4-in. air supply lines do not require sumps due to a condensate knock-out tank, heat exchanger, and duct heater located within the Treatment System. All three components will remove condensate and reduce the relative humidity of supplied air.
- All piping extensions were connected in the trench line using Type A Couplers via Electrofusion (See Submittal No. 15064-001A for specs) and heat fusion welds. Copper tracer wire was continuously placed through the trench. No damaged piping/fittings were used throughout the process. Pressure testing of air lines from west side of Albany Ave. to Treatment System will be conducted once air line installation is complete and backfilled. Piping installation was completed in accordance with RAWP Section 2.3.4.1 – Piping Installation and Section 02605 – Underground Piping of the Contract Documents. Note: DDC-05 and DDC-06 well heads and associated air lines will be installed above ground. Air line and well head connections will be installed at a later date.
- Posillico backfilled DDC-05 trench line to grade and partially backfilled sump collection area. Excavated material (fine-coarse sand) was used as backfill. Material contained no rock, asphalt, or sharp edged debris. Backfilled material was compacted in 12-in. lifts using plate compactor. Backfilling was done in accordance with RAWP Sections 2.3.4, 2.3.4.1, and 2.3.4.2 and Contract Document Sections 02111, 02200, 02220, and 02225.
- Tomorrow, Posillico will excavate trench and extend piping to treatment system pad.
- Excavation area secured with orange fencing. Site fence and gates secured upon departure. Off-site at 16:30.

**VISITORS TO SITE:**

NAME	Representing	Entered Exclusion/CRZ Zone	
None		Yes ( )	No ( )

# DAILY OBSERVATION REPORT

Pg. 3 of 7

Report No.: 45

EA Project File: 1447429

Date: March 01, 2012

## PROJECT SCHEDULE:

- DDC well installation (16 January – 02 April 2012).
- Install underground piping (30 January – 02 March 2012)
- Install airline sumps (27 February - 02 March 2012)

## ISSUES PENDING:

- None

## ITEMS OF CONCERN:

- None

**Site Representative:**

Robert Peterson

**Date:** 01 March 2012



Report No.: 45

EA Project File: 1447429

Date: March 01, 2012

Photographs



View of 4-in. air supply lines extending from Benjoe Dr.



View of 4-in. lines bypassing sump collection area.



Report No.: 45

EA Project File:

1447429

Date: March 01, 2012



View of 4-in. and 6-in. lines merging together, looking west.



Air lines extending to the east towards treatment system pad.

Report No.: 45

EA Project File: 1447429

Date: March 01, 2012



View of 6-in. line being installed to DDC-05, looking north.



View of 4-in. and 6-in. air lines at DDC-05.



Report No.: 45

EA Project File:

1447429

Date: March 01, 2012



**DDC-05 air line trench backfilled/compacted, looking north.**



**Posillico backfilling/compacting sump collection area.**



DAILY OBSERVATION REPORT

Report No.: 46 EA Project File: 1447429 Date: March 02, 2012

EA Engineering, P.C.

6712 Brooklawn Parkway, Suite 104
Syracuse, NY 13211-2158



Site No. 1-52-140

Contractor PM: AECOM – Walter Howard
NYSDEC PM: Jeffrey Dyber
Construction Manager: AECOM - Kent Wagener
Air Monitoring: AECOM
Health & Safety: AECOM

NYSDEC Division of Environmental Remediation
Site Location: Albany St., Babylon, NY (Site No. 1-52-140)

Weather Conditions

Table with 5 columns: General Description, Overcast, am, Overcast, Pm. Rows include Temperature (35 am, 41 Pm) and Wind Direction (7-9 mph ESE am, 9-12 mph SE Pm).

HEALTH & SAFETY:

(\*If any box(s) below are checked "Yes", list the deviation under the "Items for Concern" section of this report).

Table with 4 columns: Question, \*Yes ( ), No (X), NA ( ). Rows ask about changes to Health & Safety Plan, exceedances at perimeter, and dust/odor issues.

WASTE HAULING:

(\*If any box(s) below are checked "Yes", list the deviation under the "Items for Concern" section of this report).

Table with 4 columns: Question, \*Yes ( ), No ( ), NA (X). Rows ask about vehicles without proper D.O.T. numbers and vehicles not tarped.

Materials Removed From Site:
Disposal Facility: 110 Sand Company
Total Loads (on this date): 0
Total Loads (to date): 1
Total Estimated Daily Weight (tons): 0
Total Approximate\* Weight (tons): 20

\*Actual (total weight) adjusted periodically based on weight tickets submitted by the disposal facilities.

# DAILY OBSERVATION REPORT

Report No.: 46

EA Project File:

1447429

Date: March 02, 2012

## Summary of Events:

- Onsite at 07:30, spoke with Kent Wagoner and Sam Rowe (AECOM) regarding planned work for the day. Posillico Construction (Posillico) already onsite.
- Prior to the start of work, AECOM conducted health and safety meeting, discussed overall goals for day, and setup upwind and downwind air monitoring stations. Upwind station installed along western edge of Albany Ave and downwind station near construction trailers. Air monitoring was performed in accordance with the Contract Documents and AECOM's Remedial Action Work Plan (RAWP): Section 4.2 – Dust Monitoring, Section 5.0 – Air Monitoring Plan. No exceedances were recorded.
- Drilling activities are on standby until hydraulic pump is repaired. Drilling is estimated to resume early next week.
- Posillico excavated trench line to treatment system pad. The trench bottom was excavated on a grade, to promote drainage of condensate moisture to airline sumps. Trench bottom was relatively smooth and free of rock, asphalt, and debris. Excavation activities were completed in accordance with RAWP Section 2.3.4 – Utility and Pipe Excavation Plan, Contract Document Section 02220 – Excavation and Subgrade Preparation, and Section 02225 – Trenching.
- Prior to high-density polyethylene (HDPE) pipe installation, Posillico prefabricated pipe lengths and fittings on SCWA property using heat fusion welds (RAWP Section 2.3.4.1 – Piping Installation). Posillico extended piping to the treatment system pad. Piping layout was arranged as one row, alternating 6-in. and 4-in. piping. All piping extensions were connected in the trench line using Type A Couplers via Electrofusion (See Submittal No. 15064-001A for specs) and heat fusion welds. Copper tracer wire was continuously placed through the trench. No damaged piping/fittings were used throughout the process. Pressure testing of air lines from west side of Albany Ave to Treatment System will be conducted once air line installation is complete and backfilled. Piping installation was completed in accordance with RAWP Section 2.3.4.1 – Piping Installation and Section 02605 – Underground Piping of the Contract Documents.
- Posillico backfilled trench line from sump collection area to 20-ft west of treatment system pad. Excavated material (fine-coarse sand) was used as backfill. Material contained no rock, asphalt, or sharp edged debris. Backfilled material was compacted in 12-in. lifts using plate compactor. Backfilling was done in accordance with RAWP Sections 2.3.4, 2.3.4.1, and 2.3.4.2 and Contract Document Sections 02111, 02200, 02220, and 02225.
- Monday (03/04/2012), Posillico will install piping and fittings for treatment system connections.
- Excavation area secured with orange fencing. Site fence and gates secured upon departure. Off-site at 12:30.

## VISITORS TO SITE:

NAME	Representing	Entered Exclusion/CRZ Zone	
None		Yes ( )	No ( )

## PROJECT SCHEDULE:

- DDC well installation (16 January – 02 April 2012).
- Install underground piping (30 January – 02 March 2012)

## ISSUES PENDING:

- None

## ITEMS OF CONCERN:

- None

Site Representative:

Robert Peterson

Date: 02 March 2012



Report No.: 46

EA Project File: 1447429

Date: March 02, 2012

**Photographs**



**Posillico trenching to treatment system pad, looking east.**



**View of trench line to treatment system pad, looking east.**



Report No.: 46

EA Project File:

1447429

Date: March 02, 2012



View of treatment system pad and trench line.



Posillico extending piping to treatment system pad, looking west.