

**TABLE 1**  
**WATER ELEVATIONS AND NAPL MONITORING DATA**  
**FIRST QUARTER 2020 GROUNDWATER MONITORING EVENT**  
**PATCHOGUE FORMER MGP SITE**  
**PATCHOGUE, NEW YORK**

Location ID	Top of Casing Elevation (ft., NAVD)	Approx. Ground Surface Elevation <sup>(1)</sup> (ft., NAVD)	Depth to Water (ft., BTOC)	Stick-up Length (feet)	3/17/2020			Remarks
					Water Elevation (ft., NAVD)	Depth to NAPL (ft., BTOC)	Total Depth of Well (ft., BTOC)	
MW-1	11.47	NA	5.81	NA	5.66	NI	15.25	
MW-3	5.56	NA	1.93	NA	3.63	NI	10.08	Slight mothball-like odor observed upon removal of oil/water interface probe from well casing following gauging of well.
MW-4S	7.97	NA	4.98	NA	2.99	NI	12.25	Faint mothball-like odor observed upon removal of oil/water interface probe from well casing following gauging of well.
MW-4D	7.79	NA	4.75	NA	3.04	NI	26.65	
MW-7S	8.45	NA	4.72	NA	3.73	NI	12.70	Faint mothball-like odor observed upon removal of oil/water interface probe from well casing following gauging of well.
MW-7D	8.31	NA	4.70	NA	3.61	NI	28.54	
MW-8S	5.08	NA	0.76	NA	4.32	NI	9.90	
MW-8D	4.98	NA	0.70	NA	4.28	NI	25.10	
MW-10S	NA	6	3.80	2.39	4.59	NI	17.83	
MW-10D	NA	6	3.89	2.51	4.62	NI	28.21	
MW-11S	NA	5.7	3.70	2.71	4.71	NI	16.58	Slight to moderate mothball-like odor observed upon removal of oil/water interface probe from well casing following gauging of well.
MW-11D	NA	5.7	3.81	2.70	4.59	NI	26.40	
MW-12S	NA	5.5	4.11	2.60	3.99	NI	16.41	Moderate mothball-like odor observed upon removal of oil/water interface probe from well casing following gauging of well.
MW-12D	NA	5.5	4.16	2.76	4.10	NI	26.58	Slight mothball-like odor observed upon removal of oil/water interface probe from well casing following gauging of well.
MW-13S	NA	5.5	4.51	2.88	3.87	NI	15.90	Moderate mothball-like odor observed upon removal of oil/water interface probe from well casing following gauging of well.
MW-13D	NA	5.5	4.41	2.73	3.82	NI	26.81	Slight mothball-like odor observed upon removal of oil/water interface probe from well casing following gauging of well.

**TABLE 1**  
**WATER ELEVATIONS AND NAPL MONITORING DATA**  
**FIRST QUARTER 2020 GROUNDWATER MONITORING EVENT**  
**PATCHOGUE FORMER MGP SITE**  
**PATCHOGUE, NEW YORK**

Location ID	Top of Casing Elevation	Approx. Ground Surface Elevation <sup>(1)</sup>	Depth to Water	Stick-up Length	Water Elevation	Depth to NAPL	Total Depth of Well	Remarks
	(ft., NAVD)	(ft., NAVD)	(ft., BTOC)	(feet)	(ft., NAVD)	(ft., BTOC)	(ft., BTOC)	
MW-14S	NA	4.5	3.94	2.67	3.23	NI	15.57	
MW-14D	NA	4.5	3.96	2.52	3.06	NI	24.90	
SG-1	--	--	4.09	NA	--	--	NA	Re-established staff gauge, existing PVC stilling tube detached from angle iron driven into stream bed.
SG-2	--	--	3.75	NA	--	--	NA	Re-established staff gauge, existing PVC stilling tube detached from angle iron driven into stream bed.

**Notes:**

(1) - Reference elevations for wells MW-10S/D through MW-14S/D and the surface water elevation control points (staff gauges SG-1 and SG-2) have not been surveyed. Depth to water measurements were made from ground surface and the water elevation approximated using known surveyed ground surface elevations. The calculated water elevations for these locations are considered approximate.

NAVD - North American Vertical Datum 1988

ft. - Feet

BGS - Below Ground Surface

BTOC - Below Top of Casing

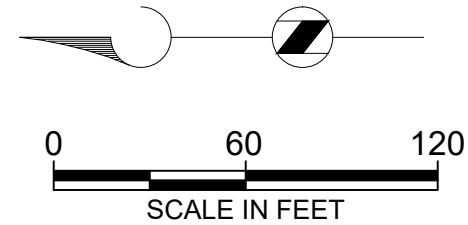
NA - Not Applicable

NI - NAPL not Indicated by Oil/Water Interface Probe

NM - Not measured

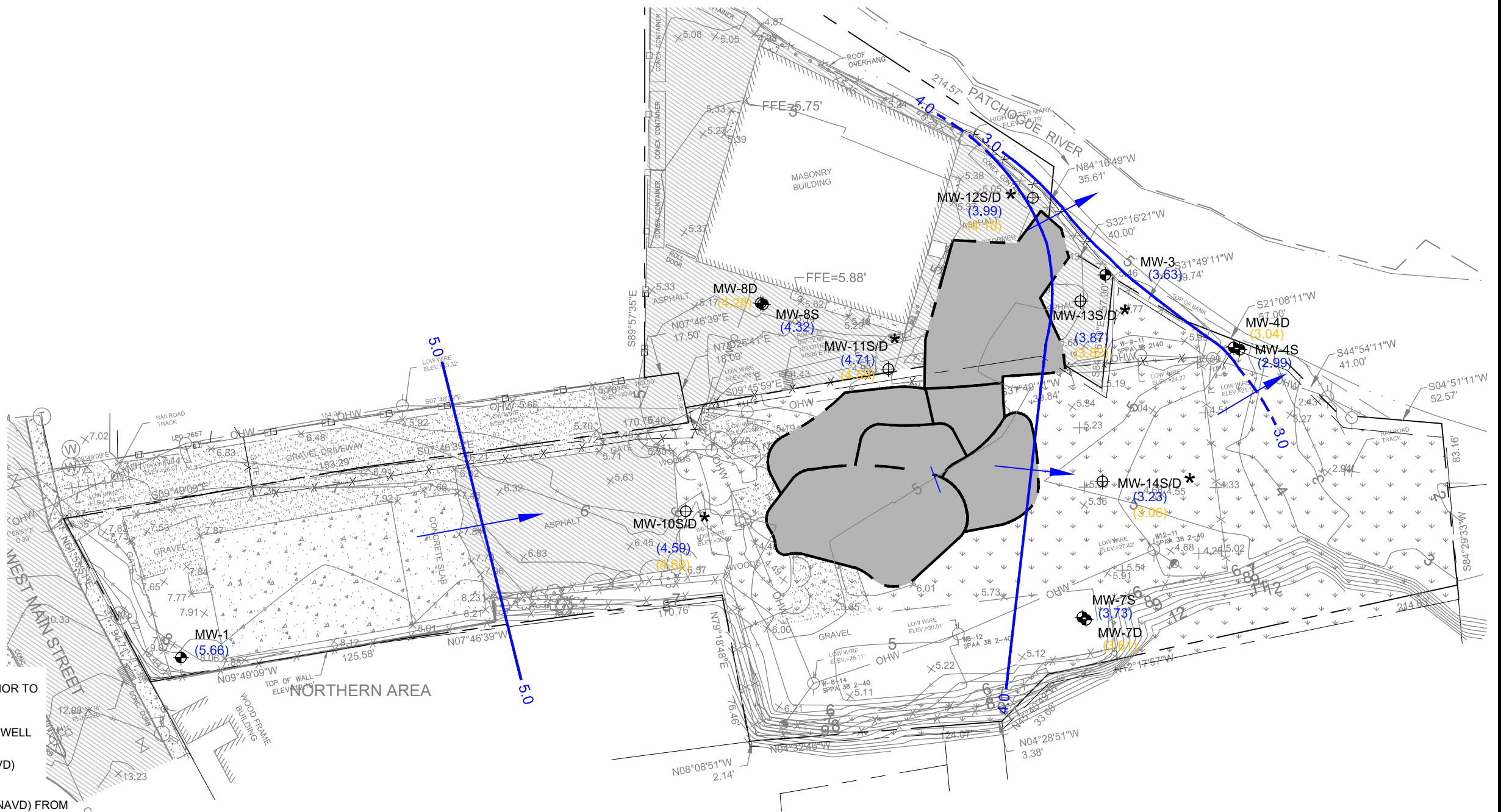
MW - monitoring well

SG - staff gauge



- LEGEND:
- PROPERTY LINE
  - x x FENCE
  - 10 TOPOGRAPHIC CONTOUR
  - ⊕ MONITORING WELL INSTALLED PRIOR TO REMEDIATION
  - ⊕ POST-REMEDIATION MONITORING WELL
  - 4 WATER TABLE CONTOUR (FT., NAVD)  
DASHED WHERE INFERRED
  - (3.87) GROUNDWATER ELEVATION (FT., NAVD) FROM  
SHALLOW MONITORING WELL (SCREENED ACROSS OR  
CLOSE TO WATER TABLE)
  - (3.06) GROUNDWATER ELEVATION (FT., NAVD) FROM DEEP  
MONITORING WELL (SCREENED BELOW WATER TABLE). VALUE  
NOT USED FOR CONTOURING.
  - GENERALIZED DIRECTION OF GROUNDWATER FLOW
  - \* HORIZONTAL LOCATION AND POSTED GROUNDWATER  
ELEVATION DATA IS APPROXIMATE, AS SURVEYING OF WELLS  
WILL BE PERFORMED FOLLOWING COMPLETION OF FINAL SITE  
RESTORATION ACTIVITIES.

NOTES:  
1. BASE MAP INFORMATION OBTAINED FROM TETRA  
TECH EC, INC. DRAWING ENTITLED "CONCEPTUAL SITE  
MODEL", DATED DECEMBER 17, 2008.



SCALE: 1" = 60'  
153021  
DATE: May 6, 2020

NATIONAL GRID  
PATCHOGUE FORMER MGP SITE  
VILLAGE OF PATCHOGUE, NEW YORK

WATER TABLE ELEVATION CONTOUR MAP  
MARCH 17, 2020

FIGURE  
1