

(Fact Sheet Begins Next)

Act Now to Continue Receiving Information About This Site!

DEC's Division of Environmental Remediation (DER) now distributes information about contaminated sites *electronically by email*.

If you would like to continue to receive information about the contaminated site featured in this fact sheet:

You must sign up for the DER email listserv:

www.dec.ny.gov/chemical/61092.html

DER cannot register your email address - only the email address owner can do so. If you already have signed up for the listserv for the county in which the site is located, you need do nothing.



Why You Should Go “Paperless”:

Get site information faster and share it easily;

Receive information about all sites in a chosen county - read what you want, delete the rest;

It helps the environment and stretches your tax dollars.

If “paperless” is not an option for you, call or write to the DER project manager identified in this fact sheet. Indicate that you need to receive paper copies of fact sheets through the Postal Service. Include the site name in your correspondence. The option to receive paper is available to individuals only. Groups, organizations, businesses, and government entities are assumed to have email access.

This page intentionally left blank.



FACT SHEET

State Superfund Program

Receive Site Fact Sheets by **Email**. See “For More Information” to Learn How.

Speonk Solvent Plume
Site Number 152185
Speonk, NY

February 2013

Site Characterization Investigation Completed

The New York State Department of Environmental Conservation (NYSDEC) has completed a Site Characterization investigation for the Speonk Solvent Plume (“Site”) in Speonk, Suffolk County. The site is located north of the intersection of Speonk-Riverhead Road and Old Country Road, and extends south of Montauk Highway toward Remsenburg. See Figure 1-1 for a map of the site location. This investigation was conducted by the NYSDEC under New York’s State Superfund Program.

Public Meeting
Wednesday, February 27, 2013
7:00 PM to 9:00 PM

Suffolk County Community College
Eastern Campus (Riverhead)
Room S-101
Shinnecock Building,
south side of the campus

121 Speonk-Riverhead Road
Riverhead, NY 11901

At the meeting, representatives from the NYSDEC and NYSDOH will:

- Discuss the results of the Site Characterization investigation
- Provide information about the recent site classification
- Answer your questions about the site

Site Description

The Speonk Solvent Plume (Site) is located in the Town of Southampton, Suffolk County, New York. The Site is shown on Figure 1-1, and covers about 600 acres. The central portion of the Site is located near the intersection of Old Country Road and North Phillips Avenue. The approximate site boundaries include; to the east, Speonk-Riverhead Road; to the west, about 2000 feet west of Speonk-Riverhead Road; to the south, about 2000 feet south of Montauk Highway; and to the north, about one mile from the intersection of Old Country Road and North Phillips Avenue. The Site is generally undeveloped north of Old Country Road with a few light industrial/commercial businesses. To the south of Old Country Road, the study area is primarily residential with some light commercial and industrial properties.

Investigation Results

In December 2001, the Suffolk County Department of Health Services (SCDHS) detected chlorinated volatile organic compounds in a private drinking water well near the intersection of Old Country Road and North Phillips Avenue. Subsequently, the SCDHS conducted an initial investigation to determine the area of impacted groundwater. Work completed by the SCDHS has included sampling of private drinking water wells, aquifer screening and monitoring well installations in the area. The SCDHS data confirmed the presence of chlorinated solvent contaminated groundwater in the area. The primary contaminants found were perchloroethene (PCE), trichloroethene (TCE), trichloroethane (TCA), carbon tetrachloride, and chloroform.

All residential wells where contaminants were detected above New York State drinking water standards were connected to the public water supply system by the United States Environmental Protection Agency (USEPA) to eliminate the ingestion exposure pathway. SCDHS continued to monitor private water supply wells at structures not connected to the public water supply through 2012. The public water supply system obtains water from a source which is not affected by this contamination and is monitored to ensure that it meets Federal and State drinking water standards.

Based on the initial SCDHS findings, the NYSDEC initiated a Site Characterization to determine the source of the contamination and assess the pathways by which the contamination could travel. During the investigation, samples of soil, soil vapor, and groundwater were collected. Soil and groundwater profile borings were advanced, monitoring wells were installed, and background information gathered.

The general location of contamination in the aquifer has been characterized. The contaminated groundwater solvent plume is about two miles in length. The plume is located at depths ranging from 25 feet to 115 feet below the land surface and moves in a north to south direction.

The potential for soil vapor intrusion to occur at buildings overlying the contaminated plume was also evaluated during the site characterization. Soil vapor intrusion is the process by which vapors volatilize, from volatile organic compounds in soils and/or groundwater, and then move into the indoor air of a structure through cracks or holes in a foundation. Soil vapor intrusion, as a potential exposure pathway, was evaluated by the New York State Department of Health and the SCDHS. Based on the data, no actions are needed to address exposures related to soil vapor intrusion.

The Site Characterization investigation was unsuccessful in locating the source of solvent contamination. The Site Characterization report, dated December 2011, details the investigation results. Based upon the State's review of the report, it was decided, in May 2012, that the contaminated groundwater plume did not meet the criteria for listing it as a Site on the New York State Registry of Inactive Hazardous Waste Disposal Sites.

Who to Contact

Comments and questions are always welcome and should be directed as follows:

Project Related Questions

Robert D. DeCandia Jr., P.E.
New York State Department of Environmental
Conservation
625 Broadway
Albany, NY 12233-7015
Phone: (518) 402-9621
Email: rddecand@gw.dec.state.ny.us

Site-Related Health Questions

Sharon McLelland
New York State Department of
Health
Bureau of Environmental Exposure
Investigation
Empire State Plaza
Corning Tower Room 1787
Albany, NY 12237
Phone: (518) 402-7880
Email: beei@health.state.ny.us

We encourage you to share this fact sheet with neighbors and tenants, and/or post this fact sheet in a prominent area of your building for others to see.

Receive Site Fact Sheets by Email

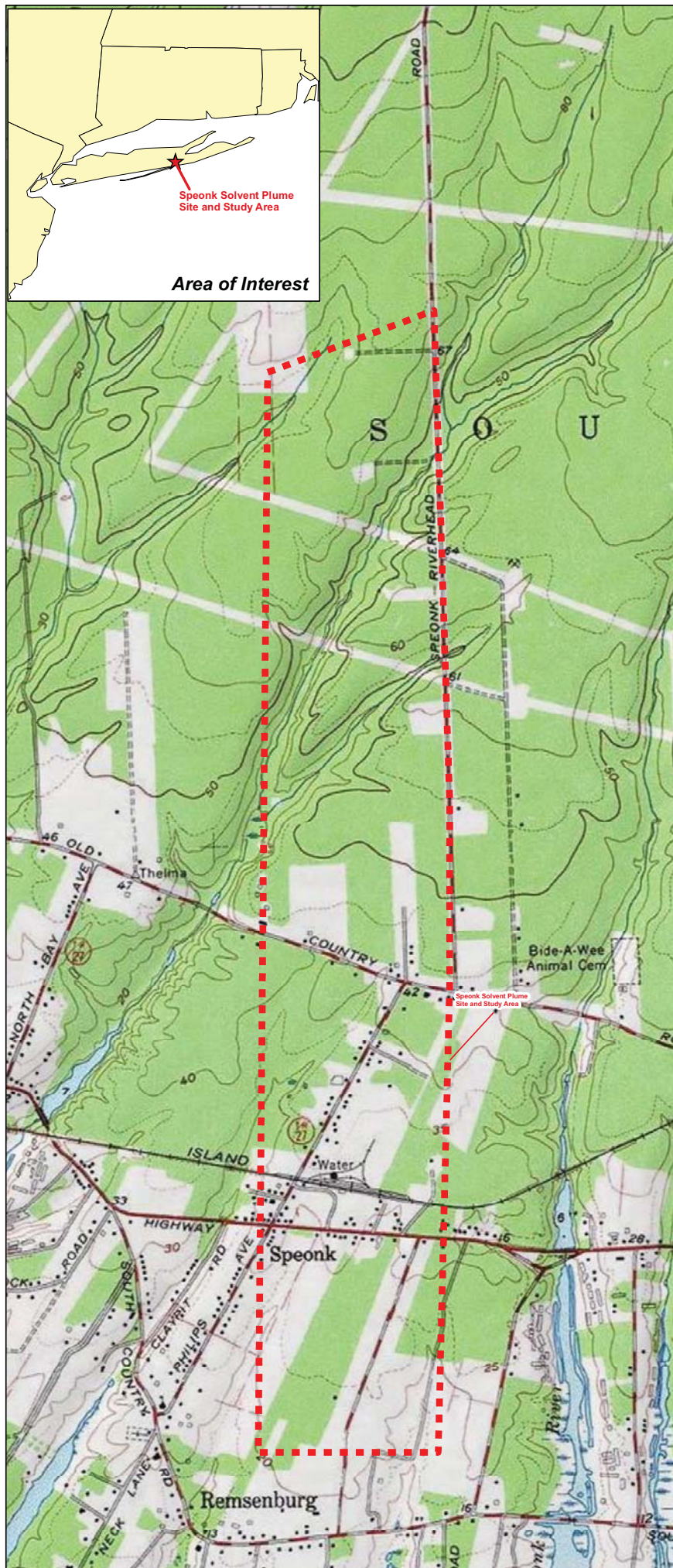
Have site information such as this fact sheet sent right to your email inbox. NYSDEC invites you to sign up with one or more contaminated sites county email listservs available at the following web page: www.dec.ny.gov/chemical/61092.html . It's *quick*, it's *free*, and it will help keep you *better informed*.



As a listserv member, you will periodically receive site-related information/announcements for all contaminated sites in the county(ies) you select.

You may continue also to receive paper copies of site information for a time after you sign up with a county listserv, until the transition to electronic distribution is complete.

Note: Please disregard if you already have signed up and received this fact sheet electronically.



0 650 1,300 2,600
Feet



Source: United States
Department of the Interior
Geological Survey

Eastport Quad

Figure 1-1
Site Location Map
Speonk Solvent Plume Site
NYSDEC Site No. 1-52-185