



Sarah Aldridge  
Project Manager

March 20, 2012

Mr. John Sheehan  
New York State Department of Environmental Conservation  
Division of Environmental Remediation  
SUNY at Stony Brook  
50 Circle Road  
Stony Brook, NY 11790-3409

**Re:** Monitoring Well Decommissioning Work Plan  
Former Hortonsphere Sites  
Long Island, New York

Dear Mr. Sheehan:

As you know, National Grid has conducted a Site Characterization (SC) at three alternative gas sites on Long Island, New York in accordance with Administrative Order on Consent Index No. A1-0595-08-07. Following the completion of the SC, National Grid received Covenants not to Sue from the New York State Department of Environmental Conservation (NYSDEC) for the three alternative gas sites. As such, we are submitting this work plan to decommission the monitoring wells at the three sites (Manhasset, Pinelawn and Riverhead former Hortonspheres). All three sites were free of Hortonsphere-related impacts. Locations of the monitoring wells can be found on the attached figures.

### **Field Procedures**

Monitoring wells located at the Manhasset and Pinelawn sites will be decommissioned using grouting in-place methods in accordance with guidance presented in the *NYSDEC CP-43: Groundwater Monitoring Well Decommissioning Policy*, dated November 3, 2009. GEI will attempt to pull the monitoring well casings in wells that are 25 feet in depth or shallower as per *NYSDEC CP-43*. Boreholes will be pressure-grouted using a tremie pipe with a bentonite and portland cement grout mixture.

Excess soil cuttings will be screened with an organic vapor meter and inspected visually and olfactorily. Apparently clean cuttings, PVC material, and concrete will be collected in 55-gallon United States Department of Transportation (USDOT) drums and disposed of as construction and demolition debris by the drilling contractor.

Monitoring wells at the Riverhead site will be hand pulled and backfilled with clean sand, as per direction from the NYSDEC.

Mr. John Sheehan  
New York State Department of Environmental Conservation  
Stony Brook, New York  
March 20, 2012  
Page 2

## **Reporting**

A well decommissioning record will be generated in accordance with the NYSDEC guidance. The record will indicate the method of abandonment, volume and mixture of grout used in the well, and the total number of grout batches mixed. The decommissioning record will be submitted to the NYSDEC in a well abandonment report.

If you have any questions, or require any additional information, feel free to contact me at (516) 545-2568.

Sincerely,



Sarah Aldridge  
Project Manager

Enclosures

cc:

A. Juchatz (SCDEE)  
R. Paulsen (SCDHS)  
R. Ockerby (NYSDOH)  
T. Campbell (National Grid)  
T. Leissing (National Grid)  
J. Zak, GEI  
M. Felter, GEI

H:\TECH\project\Keyspan\072710 LI Site Characterizations\Well Decommissioning\Three Sites Well Decommissioning Letter 032012.docx





**LEGEND:**

- PROPERTY BOUNDARY (APPROXIMATE)
- FORMER HORTONSPHERE SITE BOUNDARY (APPROXIMATE)
- HISTORIC STRUCTURE LOCATION
- GROUND SURFACE CONTOUR (FEET, NAVD)
- CROSS SECTION LOCATION
- PFH-GP-01/PFH-GW-01 GEOPROBE® BORING LOCATION/ TEMPORARY GROUNDWATER SAMPLING LOCATION
- PFH-SV-02 SOIL VAPOR SAMPLE LOCATION
- PFH-SS-01 SURFACE SOIL SAMPLE LOCATION

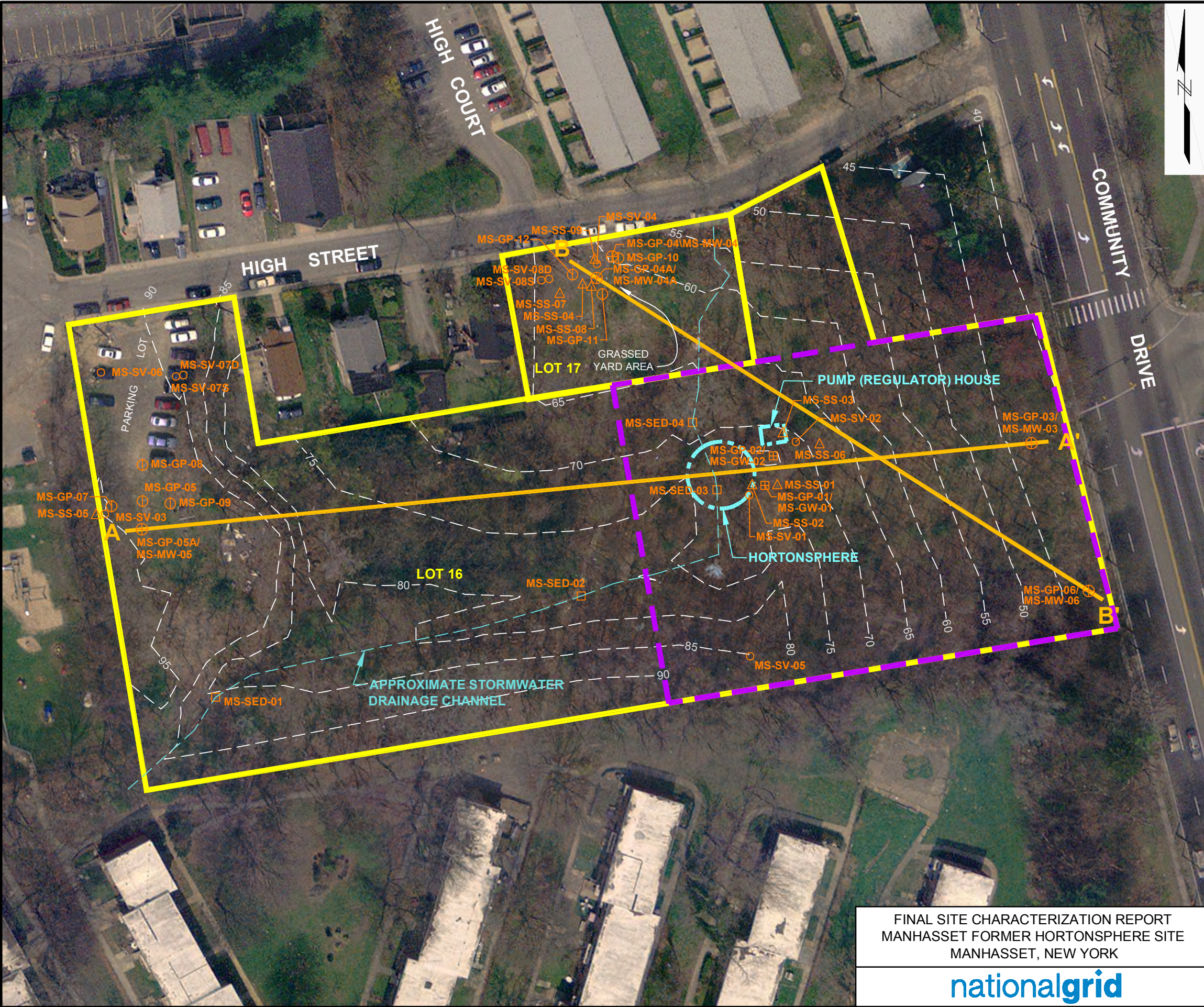
**SOURCES:**

1. Orthophoto obtained from New York State Interactive Mapping Gateway (<http://www1.nysgis.state.ny.us/MainMap.cfm>) photo date: 2004, accessed 11/15/07.
2. Farmingdale Sub Parcel 49 [Suffolk County File 1196280] surveyed September 1927. Scale 1 inch: 50 feet.
3. Farmingdale Substation, Situated Near Farmingdale, Town of Babylon, County of Suffolk, New York. Scale 1 inch: 100 feet.
4. Survey of existing conditions and sample locations conducted by GEI Consultants, Inc. on 12/18/07. Survey by New York state licensed land surveyor number 050146. Horizontal datum: New York State Plane coordinate system (Long Island Zone, North American Datum (NAD)83). Vertical datum: North American Vertical Datum (NAVD) 88.









**LEGEND:**

|  |   |
|--|---|
|  | PROPERTY BOUNDARY (APPROXIMATE)   |
|  | FORMER HORTONSHERE SITE BOUNDARY (APPROXIMATE)                                |
|  | HISTORIC STRUCTURE LOCATION   |
|  | GROUND SURFACE ELEVATION CONTOUR (FEET, NAVD)                                 |
|  | CROSS SECTION LOCATION  |
|  | SOIL BORING LOCATION/<br>GEOPROBE® TEMPORARY<br>GROUNDWATER SAMPLING LOCATION |
|  | SOIL BORING LOCATION/<br>MONITORING WELL LOCATION                             |
|  | SOIL BORING LOCATION  |
|  | SOIL VAPOR SAMPLE LOCATION  |
|  | SURFACE SOIL SAMPLE LOCATION  |
|  | SEDIMENT SAMPLE LOCATION  |

**NOTE:**  
Contour intervals provided on this figure are based upon field survey.

**SOURCES:**

1. Orthophoto obtained from New York State Interactive Mapping Gateway (<http://www1.nysgis.state.ny.us/MainMap.cfm>) photo date: 2004, accessed 10/04/07.
2. *Land and Tax Map, Sec. 2, Blk. 347*, Nassau County Department of Assessment, Sheet 1 of 1, Revised date: April 18., 2003, Scale: 1" = 100', map obtained from: <http://www.nassaucountyny.gov>.
3. 1950 Sanborn Fire Insurance Map.
4. Manhasset Hortonsphere Property Maps Parcel Nos. 24.1, 24.2, and 23 Long Island Lighting Company, Mineola, N.Y.
5. Survey of existing conditions and sample locations conducted by GEI Consultants, Inc. on 12/10 and 12/18/07. Survey by New York state licensed land surveyor number 050146. Horizontal datum: New York State Plane coordinate system (Long Island Zone, North American Datum (NAD)83). Vertical datum: North American Vertical Datum (NAVD) 88.
6. Survey of additional sample locations conducted by GEI Consultants, Inc. on 3/11/09. Survey by New York state licensed land surveyor number 050146. Horizontal datum: New York State Plane coordinate system (Long Island Zone, North American Datum (NAD)83). Vertical datum: North American Vertical Datum (NAVD) 88.

0

60

120

SCALE, FEET

FINAL SITE CHARACTERIZATION REPORT  
MANHASSET FORMER HORTONSHERE SITE  
MANHASSET, NEW YORK

EXISTING CONDITIONS AND  
SAMPLE LOCATION  
SUMMARY

Project 093000-8-1801

August 2011

Figure 2