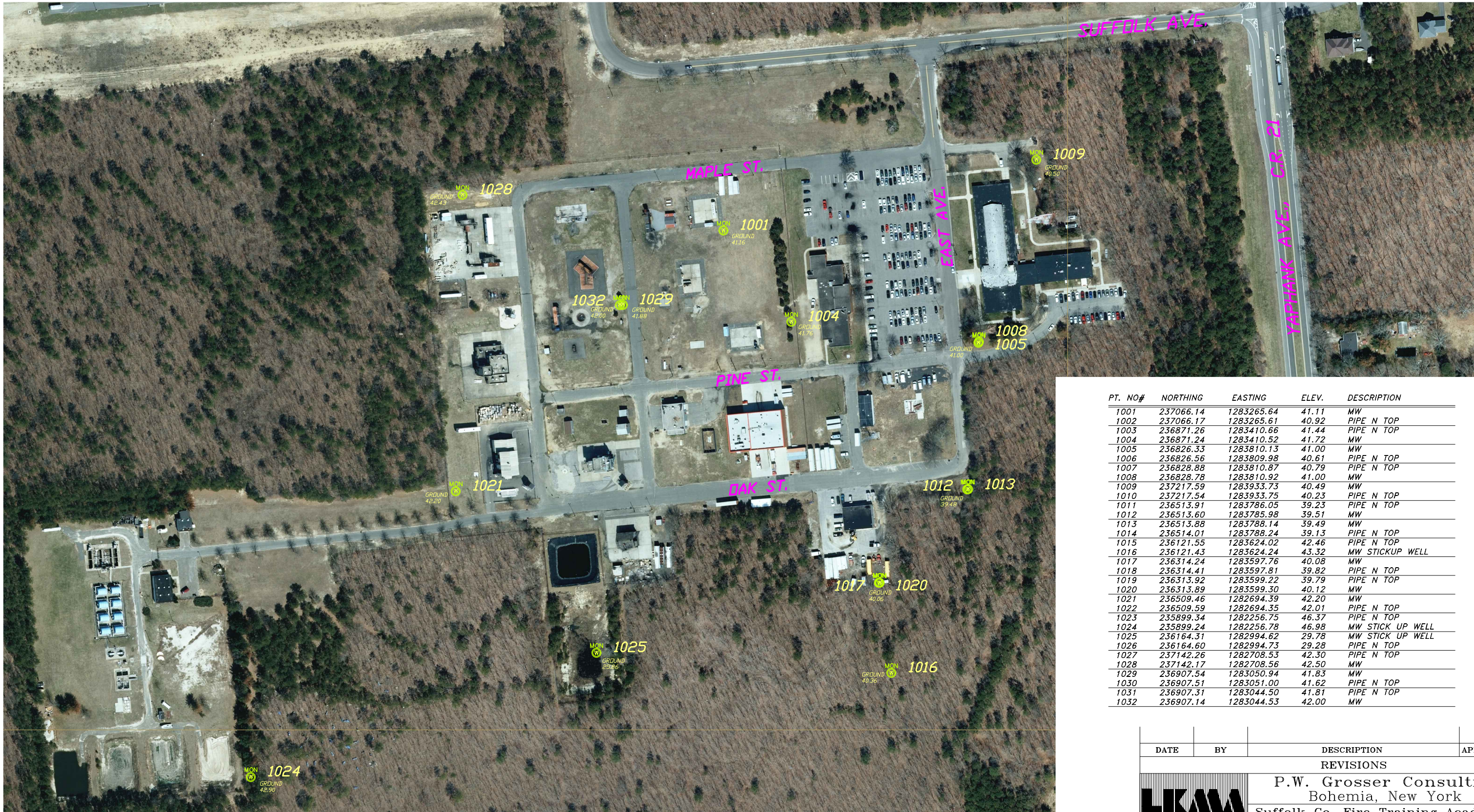




APPENDIX L
L.K. Mclean Associates, PC
Permenent Monitoring Well Survey



PT. NO#	NORTHING	EASTING	ELEV.	DESCRIPTION
1001	237066.14	1283265.64	41.11	MW
1002	237066.17	1283265.61	40.92	PIPE N TOP
1003	236871.26	1283410.66	41.44	PIPE N TOP
1004	236871.24	1283410.52	41.72	MW
1005	236826.33	1283810.13	41.00	MW
1006	236826.56	1283809.98	40.61	PIPE N TOP
1007	236828.88	1283810.87	40.79	PIPE N TOP
1008	236828.78	1283810.92	41.00	MW
1009	237217.59	1283933.73	40.49	MW
1010	237217.54	1283933.75	40.23	PIPE N TOP
1011	236513.91	1283786.05	39.23	PIPE N TOP
1012	236513.60	1283785.98	39.51	MW
1013	236513.88	1283788.14	39.49	MW
1014	236514.01	1283788.24	39.13	PIPE N TOP
1015	236121.55	1283624.02	42.46	PIPE N TOP
1016	236121.43	1283624.24	43.32	MW STICKUP WELL
1017	236314.24	1283597.76	40.08	MW
1018	236314.41	1283597.81	39.82	PIPE N TOP
1019	236313.92	1283599.22	39.79	PIPE N TOP
1020	236313.89	1283599.30	40.12	MW
1021	236509.46	1282694.39	42.20	MW
1022	236509.59	1282694.35	42.01	PIPE N TOP
1023	235899.34	1282256.75	46.37	PIPE N TOP
1024	235899.24	1282256.78	46.98	MW STICK UP WELL
1025	236164.31	1282994.62	29.78	MW STICK UP WELL
1026	236164.60	1282994.73	29.28	PIPE N TOP
1027	237142.26	1282708.53	42.30	PIPE N TOP
1028	237142.17	1282708.56	42.50	MW
1029	236907.54	1283050.94	41.83	MW
1030	236907.51	1283051.00	41.62	PIPE N TOP
1031	236907.31	1283044.50	41.81	PIPE N TOP
1032	236907.14	1283044.53	42.00	MW

NOTES


- MEASUREMENTS ARE IN ACCORDANCE WITH U.S. STANDARDS.
- HORIZONTAL DATUM IS IN THE NEW YORK STATE PLANE COORDINATE SYSTEM, NAD83 (2011), LI ZONE THROUGH USE OF RTK GPS.
- THE VERTICAL DATUM IS REFERENCED TO NAVD88.
- UNAUTHORIZED ALTERATION OR ADDITION TO A SURVEY MAP BEARING A LICENSED LAND SURVEYOR'S SEAL IS A VIOLATION OF SECTION 7209, SUBDIVISION 2, OF THE NEW YORK STATE EDUCATION LAW.
- ONLY COPIES FROM THE ORIGINAL OF THIS SURVEY MARKED WITH AN ORIGINAL OF THE LAND SURVEYOR'S "EMBOSSSED" OR "INKED" SEAL SHALL BE CONSIDERED TO BE VALID TRUE COPIES.

I hereby certify that this map was made from an actual survey completed by me on 05/22/2018 and re-shot 07/05/2018.

DANIEL P. JEDLICKA, P.L.S.
NYSPLS No. 50098

SUFFOLK COUNTY REAL PROPERTY TAX MAP NO.:

DISTRICT 0200
SECTION 779.00
BLOCK 01.00
LOT 002.000

DATE	BY	DESCRIPTION	APPROV. BY
REVISIONS			
 P.W. GROSSER CONSULTING Bohemia, New York Suffolk Co. Fire Training Academy YAPHANK, NEW YORK			
MONITORING WELL SURVEY			
L. K. McLEAN ASSOCIATES, P.C. CONSULTING ENGINEERS & LAND SURVEYORS 437 SO. COUNTRY ROAD, BROOKHAVEN, NEW YORK			
Field Survey By:	P.L.	Scale:	1" = 200'
Office Survey By:	T.L.S.	Date:	JULY 6, 2018
Approved By:	D.P.J.	File No.	18053.000
			Sheet No. 1 1

P:\18053.000 (Suffolk County Fire Training Co.)\Survey DEPT \Drawings\18053.000_Well Survey REV.dwg 7/13/2018 8:09 AM Tamara Stillman