

|                        |                             |                          |                        |
|------------------------|-----------------------------|--------------------------|------------------------|
| <b>Project</b>         | 3547 Webster Avenue IRM     | <b>Report No.</b>        | 47                     |
| <b>NYSDEC Site No.</b> | 203165                      | <b>Date</b>              | 03/31/2026             |
| <b>Location</b>        | 3547 Webster Ave, Bronx, NY | <b>File No.</b>          | 0211776                |
| <b>Client</b>          | 3547 Webster Avenue LLC     | <b>Temperature</b>       | 58-78 °F               |
| <b>Contractor</b>      | Haley & Aldrich, ISOTEC     | <b>Wind Direction</b>    | SW to NE up to 24 mph  |
| <b>Weather</b>         | Sunny                       | <b>Personnel on Site</b> | T. Ritchie, M. Forshay |
| <b>Humidity</b>        | 52%                         | <b>Time on Site</b>      | 7:00 am to 2:30 pm     |

Haley & Aldrich of New York (Haley & Aldrich) was present to document implementation of the NYSDEC conditionally approved June 2025 Interim Remedial Measure Work Plan (IRMWP) prepared by Haley & Aldrich. Site Observations are summarized below.

**Daily Observations:**

- ISOTEC mobilized to the Site and completed equipment and supply setup for in-situ chemical oxidation (ISCO) injections.
- ISOTEC performed pressure and leak testing at MW-16S to prepare for ISCO injections.
- ISOTEC performed ISCO injections at MW-09S, MW-09I, MW-14S, MW-14I, MW-15I, MW-16S, MW-16I, MW-16D, MW-17S, MW-17I, MW-17D, MW-18S, MW-18I, and MW-18D.
  - The hydrogen peroxide was mixed with potable water to create an approximately 5% solution prior to being injected via a double-diaphragm pump, surface piping connections, and injection wellheads.

**ISCO Injection Tracking for March 31, 2026:**

| Injection Well | Injection Depth (ft bgs) | 34% Hydrogen Peroxide (gal) | Potable Water (gal) | Combined Mixture (gal) |
|----------------|--------------------------|-----------------------------|---------------------|------------------------|
| MW-09S         | 8.5-13.5                 | 0.29                        | 1.71                | 2                      |
| MW-09I         | 20-25                    | 2.21                        | 12.79               | 15                     |
| MW-14S         | 7-12                     | 0.29                        | 1.71                | 2                      |
| MW-14I         | 23-28                    | 0.44                        | 2.56                | 3                      |
| MW-15I         | 19.5-24.5                | 0.59                        | 3.41                | 4                      |
| MW-16S         | 10-15                    | 1.47                        | 8.53                | 10                     |
| MW-16I         | 29-34                    | 0.29                        | 1.71                | 2                      |
| MW-16D         | 37-42                    | 0.88                        | 5.12                | 6                      |
| MW-17S         | 8-13                     | 2.21                        | 12.79               | 15                     |
| MW-17I         | 20-25                    | 0.29                        | 1.71                | 2                      |
| MW-17D         | 35-40                    | 0.44                        | 2.56                | 3                      |
| MW-18S         | 8-13                     | 4.56                        | 26.44               | 31                     |
| MW-18I         | 23-28                    | 0.29                        | 1.71                | 2                      |
| MW-18D         | 34-39                    | 0.44                        | 2.56                | 3                      |

**Injection Totals:            14.71                    85.29                    100**

**Samples Collected:**

- None

**CAMP Activities:**

- No ground intrusive activities occurred; therefore, the community air monitoring stations were not activated, however visual and olfactory monitoring was conducted. No visible dust or odors were observed leaving the Site perimeter.

**Activities Planned for Coming Week:**

- ISOTEC will continue performing ISCO injection.

**Site Photographs:**

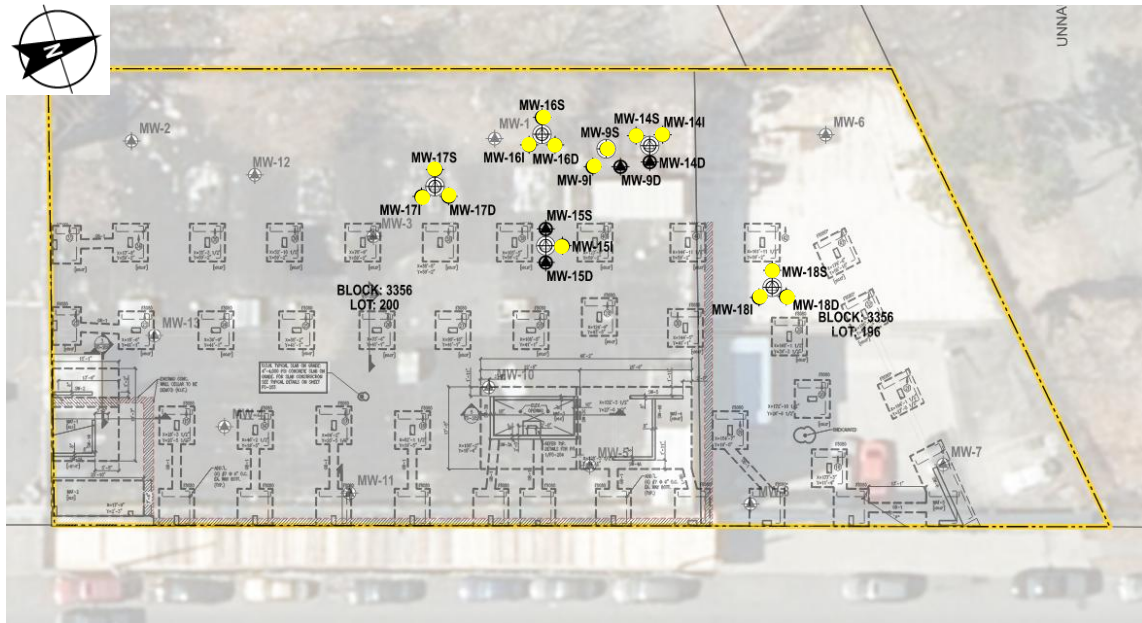


**Photo 1:** View of MW-16D injection site with ISOTEC's injection setup, facing west.



**Photo 2:** View of ISOTEC performing ISCO injection at MW-18S, facing north.

**Site Plan:**



**LEGEND:**

- Monitoring Well Injection In-Progress
- Monitoring Well Injection Completed