

Gowanus CSO Tank - CP2 Daily CAMP Report

Date: 3/13/2024

This Daily Air Monitoring Report summarizes perimeter air monitoring data collected during the referenced period in accordance with the Community Air Monitoring Plan (CAMP) which was included as part of the requirements of Spec Section 01 57 00 Temporary Controls for the Gowanus CSO-GC-SFS-RH3 CP2 Contract. Note: the information included in this daily summary is based on preliminary results and is subject to change based on data validation.

Report Period:	Wednesday, March 13, 2024	
Weather	Temperature: 47.8-61.4 °F Precipitation: 0.00 inch Relative Humidity: 53.99%	Wind Speed: 0.30-2.54 mph Prevailing Wind Direction: W
Summary of Site Activities	<ol style="list-style-type: none"> 1. CAMP monitoring approximately 24 hours a day. 2. Slurry Wall Excavation Operations. 3. We received additional action level alerts on AMS-4 for VOC's which is a continuation from yesterday. The high levels of VOC have been coming from the adjacent site at 265 Nevins ST. The investigation results from yesterday will be attached to this report again for reference. 4. We also received a response level alert on AMS-2 due to an idling truck parked right next to the AMS. 	

Figure 1 - CAMP Station Locations



Daily Readings - VOCs

Data export

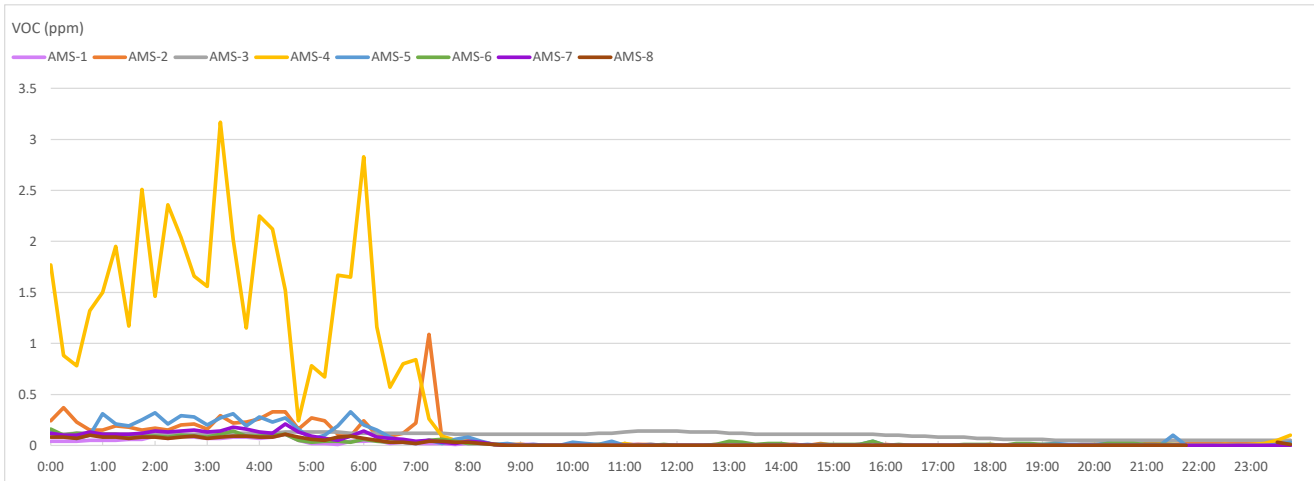
03/13/2024 00:00:00 to 03/13/2024 23:59:00

Averaging period: 15 minutes

Time	AMS-1	AMS-2	AMS-3	AMS-4	AMS-5	AMS-6	AMS-7	AMS-8
	VOC - AQS1 13032023-2241 (ppm)	VOC - AQS1 13032023-2244 (ppm)	VOC - AQS1 13032023-2240 (ppm)	VOC - AQS1 13032023-2238 (ppm)	VOC - AQS1 13032023-2239 (ppm)	VOC - AQS1 13032023-2237 (ppm)	VOC - AQS1 13032023-2243 (ppm)	VOC - AQS1 13032023-2242 (ppm)
3/13/2024 0:00	0.04	0.24	0.11	1.77	0.13	0.16	0.12	0.08
3/13/2024 0:15	0.04	0.37	0.11	0.88	0.09	0.1	0.1	0.08
3/13/2024 0:30	0.04	0.23	0.12	0.78	0.07	0.12	0.1	0.07
3/13/2024 0:45	0.05	0.15	0.12	1.32	0.1	0.11	0.13	0.1
3/13/2024 1:00	0.05	0.15	0.11	1.5	0.31	0.11	0.11	0.08
3/13/2024 1:15	0.05	0.19	0.11	1.95	0.21	0.11	0.11	0.08
3/13/2024 1:30	0.06	0.18	0.11	1.17	0.19	0.09	0.11	0.07
3/13/2024 1:45	0.06	0.15	0.11	2.51	0.25	0.09	0.12	0.08
3/13/2024 2:00	0.09	0.17	0.11	1.46	0.32	0.09	0.14	0.08
3/13/2024 2:15	0.07	0.15	0.11	2.36	0.21	0.08	0.13	0.07
3/13/2024 2:30	0.09	0.2	0.11	2.04	0.29	0.1	0.14	0.08
3/13/2024 2:45	0.08	0.21	0.11	1.66	0.28	0.09	0.15	0.09
3/13/2024 3:00	0.07	0.16	0.11	1.56	0.2	0.08	0.13	0.07
3/13/2024 3:15	0.07	0.29	0.12	3.17	0.27	0.11	0.14	0.08
3/13/2024 3:30	0.08	0.22	0.12	2.02	0.31	0.14	0.18	0.09
3/13/2024 3:45	0.08	0.23	0.12	1.15	0.19	0.09	0.16	0.09
3/13/2024 4:00	0.07	0.26	0.12	2.25	0.28	0.09	0.13	0.08
3/13/2024 4:15	0.08	0.33	0.12	2.12	0.23	0.1	0.12	0.08
3/13/2024 4:30	0.11	0.33	0.13	1.52	0.27	0.11	0.21	0.11
3/13/2024 4:45	0.05	0.16	0.13	0.24	0.16	0.05	0.13	0.08
3/13/2024 5:00	0.02	0.27	0.13	0.78	0.06	0.03	0.09	0.06
3/13/2024 5:15	0.02	0.24	0.13	0.67	0.1	0.04	0.07	0.05
3/13/2024 5:30	0.01	0.11	0.13	1.67	0.19	0.04	0.05	0.08
3/13/2024 5:45	0.04	0.09	0.12	1.65	0.33	0.03	0.09	0.09
3/13/2024 6:00	0.04	0.24	0.12	2.83	0.2	0.06	0.14	0.07
3/13/2024 6:15	0.05	0.1	0.12	1.16	0.15	0.04	0.08	0.05
3/13/2024 6:30	0.02	0.09	0.12	0.57	0.08	0.03	0.07	0.03
3/13/2024 6:45	0.03	0.12	0.12	0.8	0.03	0.03	0.06	0.03
3/13/2024 7:00	0.02	0.22	0.12	0.84	0.02	0.03	0.04	0.02
3/13/2024 7:15	0.02	1.09	0.12	0.26	0.05	0.05	0.05	0.04
3/13/2024 7:30	0.02	0.05	0.12	0.09	0.02	0.06	0.03	0.04
3/13/2024 7:45	0.01	0.04	0.11	0.05	0.06	0.04	0.02	0.03
3/13/2024 8:00	0.02	0.04	0.11	0.06	0.08	0.02	0.04	0.03
3/13/2024 8:15	0.02	0.03	0.11	0.03	0.04	0.02	0.03	0.02
3/13/2024 8:30	0.01	0.01	0.11	0.01	0.01	0.01	0.01	0.01
3/13/2024 8:45	0.01	0	0.11	0.01	0.02	0	0	0
3/13/2024 9:00	0.01	0.01	0.11	0.01	0	0	0	0
3/13/2024 9:15	0.01	0	0.11	0	0.01	0	0	0
3/13/2024 9:30	0	0	0.11	0	0	0	0	0
3/13/2024 9:45	0	0	0.11	0	0	0	0	0
3/13/2024 10:00	0	0	0.11	0.01	0.03	0	0	0
3/13/2024 10:15	0	0	0.11	0	0.02	0	0	0
3/13/2024 10:30	0.01	0	0.12	0	0.01	0.01	0	0
3/13/2024 10:45	0.01	0	0.12	0	0.04	0	0	0
3/13/2024 11:00	0.01	0	0.13	0.02	0	0	0	0
3/13/2024 11:15	0.01	0.01	0.14	0	0	0	0	0
3/13/2024 11:30	0	0.01	0.14	0	0.01	0	0	0
3/13/2024 11:45	0	0	0.14	0	0	0.01	0	0
3/13/2024 12:00	0	0	0.14	0	0	0	0	0
3/13/2024 12:15	0	0	0.13	0	0	0	0	0
3/13/2024 12:30	0	0	0.13	0	0	0	0	0
3/13/2024 12:45	0	0.01	0.13	0	0	0.01	0	0
3/13/2024 13:00	0	0	0.12	0	0	0.04	0	0
3/13/2024 13:15	0	0	0.12	0	0	0.03	0	0
3/13/2024 13:30	0	0	0.11	0	0	0.01	0	0
3/13/2024 13:45	0	0	0.11	0	0	0.02	0	0
3/13/2024 14:00	0	0.01	0.11	0	0	0.02	0	0
3/13/2024 14:15	0.01	0.01	0.11	0	0	0	0	0
3/13/2024 14:30	0	0	0.11	0	0.01	0	0	0
3/13/2024 14:45	0	0.02	0.11	0	0	0.01	0	0
3/13/2024 15:00	0	0	0.11	0	0	0.01	0	0
3/13/2024 15:15	0	0	0.11	0	0	0.01	0	0
3/13/2024 15:30	0	0.01	0.11	0	0.01	0.01	0	0
3/13/2024 15:45	0	0	0.11	0	0.04	0.04	0	0
3/13/2024 16:00	0	0.01	0.1	0	0	0	0	0
3/13/2024 16:15	0	0	0.1	0	0	0.01	0	0

Daily Readings - VOCs
 Data export
 03/13/2024 00:00:00 to 03/13/2024 23:59:00
 Averaging period: 15 minutes

Time	AMS-1	AMS-2	AMS-3	AMS-4	AMS-5	AMS-6	AMS-7	AMS-8
	VOC - AQS1 13032023-2241 (ppm)	VOC - AQS1 13032023-2244 (ppm)	VOC - AQS1 13032023-2240 (ppm)	VOC - AQS1 13032023-2238 (ppm)	VOC - AQS1 13032023-2239 (ppm)	VOC - AQS1 13032023-2237 (ppm)	VOC - AQS1 13032023-2243 (ppm)	VOC - AQS1 13032023-2242 (ppm)
3/13/2024 16:30	0	0	0.09	0	0	0	0	0
3/13/2024 16:45	0	0	0.09	0	0	0	0	0
3/13/2024 17:00	0	0	0.08	0	0	0	0	0
3/13/2024 17:15	0	0	0.08	0	0	0	0	0
3/13/2024 17:30	0	0	0.08	0	0	0.01	0	0
3/13/2024 17:45	0	0	0.07	0	0	0.01	0	0
3/13/2024 18:00	0	0	0.07	0.01	0	0.01	0	0
3/13/2024 18:15	0	0	0.06	0	0	0	0	0
3/13/2024 18:30	0	0	0.06	0	0.01	0.02	0	0
3/13/2024 18:45	0	0	0.06	0	0	0.02	0	0
3/13/2024 19:00	0	0	0.06	0	0.01	0.01	0	0
3/13/2024 19:15	0	0.01	0.05	0	0.02	0.01	0	0
3/13/2024 19:30	0	0	0.05	0	0.01	0	0	0
3/13/2024 19:45	0	0.01	0.05	0	0.01	0	0	0
3/13/2024 20:00	0	0.01	0.05	0.01	0.01	0	0	0
3/13/2024 20:15	0	0.01	0.05	0	0.02	0.02	0	0
3/13/2024 20:30	0	0	0.05	0.01	0.01	0.02	0	0
3/13/2024 20:45	0	0	0.05	0.01	0.01	0.02	0	0
3/13/2024 21:00	0	0.02	0.05	0	0	0.01	0	0
3/13/2024 21:15	0	0.02	0.05	0.01	0	0.01	0	0
3/13/2024 21:30	0	0.01	0.05	0	0.1	0.01	0	0
3/13/2024 21:45	0	0.02	0.05	0	0	0	0	0
3/13/2024 22:00	0	0.02	0.05	0	0	0	0	0
3/13/2024 22:15	0	0.02	0.05	0	0	0	0	0
3/13/2024 22:30	0.01	0.02	0.05	0.01	0	0	0	0
3/13/2024 22:45	0	0.03	0.05	0	0	0	0	0
3/13/2024 23:00	0	0.02	0.05	0.01	0	0	0	0
3/13/2024 23:15	0	0.01	0.05	0.02	0	0	0	0
3/13/2024 23:30	0	0.04	0.05	0.05	0.01	0.02	0	0.03
3/13/2024 23:45	0	0.03	0.05	0.1	0.03	0.01	0	0.01



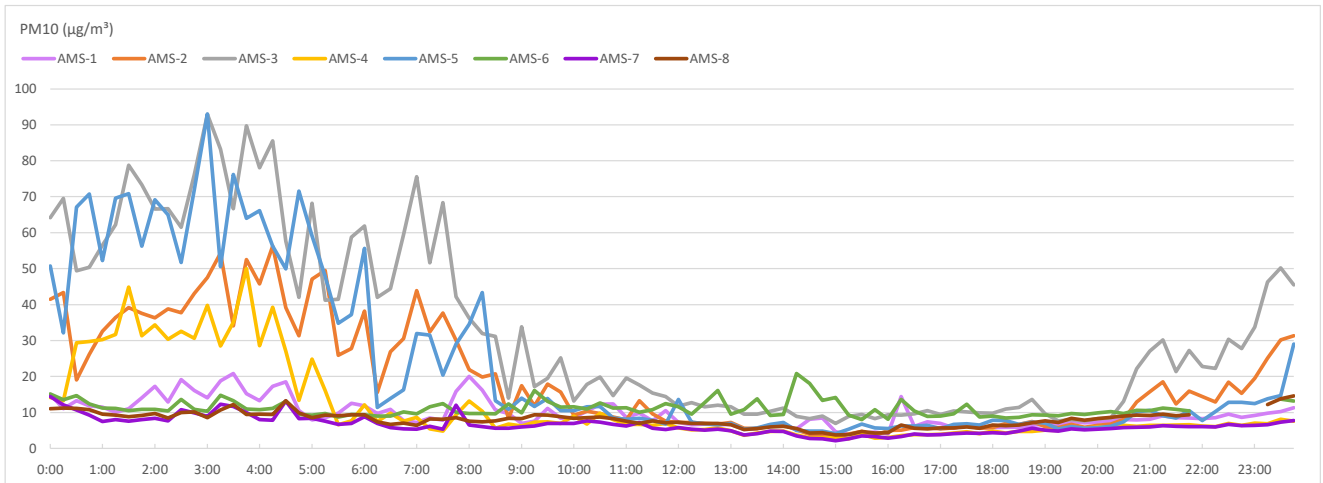
Target Analyte	Admin Level	Normal (green)	Alert Limit (yellow)	Response Limit (orange)	Action Limit (red)
Volatile Organic Compounds *	Between 0.3 and < 0.5 ppm as a 15 minute TWA	Below or equal to 0.5 ppm as a 15 minute TWA	>0.5 ppm and <=0.75 ppm as a 15 minute TWA or odors are observed	>0.75 to < 1.0 ppm as a 15 minute TWA or odors are observed	>=1 ppm as a 15 minute TWA or if odors are observed**

Daily Readings - PM10
 Data export
 03/13/2024 00:00:00 to 03/13/2024 23:59:00
 Averaging period: 15 minutes

Time	AMS-1	AMS-2	AMS-3	AMS-4	AMS-5	AMS-6	AMS-7	AMS-8
	PM10 - AQS1 13032023-2241 (µg/m³)	PM10 - AQS1 13032023-2244 (µg/m³)	PM10 - AQS1 13032023-2240 (µg/m³)	PM10 - AQS1 13032023-2238 (µg/m³)	PM10 - AQS1 13032023-2239 (µg/m³)	PM10 - AQS1 13032023-2237 (µg/m³)	PM10 - AQS1 13032023-2243 (µg/m³)	PM10 - AQS1 13032023-2242 (µg/m³)
3/13/2024 0:00	15.01	41.45	64.18	14.19	50.7	15.09	14.4	11.04
3/13/2024 0:15	11.07	43.33	69.5	13.24	32.12	13.54	12.13	11.19
3/13/2024 0:30	13.28	19.03	49.4	29.38	67.14	14.69	10.67	11.13
3/13/2024 0:45	11.86	26.21	50.34	29.71	70.72	12.37	9.23	10.81
3/13/2024 1:00	11.47	32.55	56.53	30.3	52.21	11.18	7.45	9.49
3/13/2024 1:15	10.04	36.36	62.17	31.65	69.55	11.1	8	9.25
3/13/2024 1:30	11.07	39.2	78.72	44.85	70.79	10.54	7.61	8.79
3/13/2024 1:45	14.07	37.56	73.32	31.37	56.23	10.87	8.05	9.17
3/13/2024 2:00	17.31	36.28	66.58	34.31	69.13	10.88	8.41	9.73
3/13/2024 2:15	12.88	38.77	66.68	30.38	65	10.4	7.64	8.44
3/13/2024 2:30	19.12	37.71	61.48	32.58	51.67	13.63	10.74	9.96
3/13/2024 2:45	16.12	43.06	76.06	30.61	71.91	10.82	9.91	10.14
3/13/2024 3:00	14.1	47.55	92.9	39.77	93.04	10.3	8.89	8.57
3/13/2024 3:15	18.78	54.28	83.17	28.46	50.53	14.76	12.3	10.7
3/13/2024 3:30	20.82	34.09	66.66	35.04	76.19	13.28	11.7	12.21
3/13/2024 3:45	15.2	52.47	89.68	50.05	64	10.94	9.94	9.45
3/13/2024 4:00	13.25	45.73	78.07	28.57	66.14	10.74	8.02	9.52
3/13/2024 4:15	17.24	56.3	85.52	39.22	56.24	11.12	7.88	9.41
3/13/2024 4:30	18.5	39.2	57.68	27.03	49.96	13.05	13.17	13.28
3/13/2024 4:45	10.48	31.34	42	13.31	71.52	9.46	8.29	9.84
3/13/2024 5:00	7.9	47.1	68.13	24.82	59.11	9.27	8.41	8.54
3/13/2024 5:15	8.56	49.49	41.22	16.07	47.91	9.69	7.54	9.26
3/13/2024 5:30	9.77	25.91	41.45	6.55	34.78	8.71	6.7	9.08
3/13/2024 5:45	12.53	27.81	58.71	7.64	37.21	9.41	6.96	9.37
3/13/2024 6:00	11.82	38.22	61.87	12.07	55.58	9.34	8.83	9.31
3/13/2024 6:15	9.69	15.61	42.04	7.47	11.38	8.96	6.95	7.37
3/13/2024 6:30	10.84	26.9	44.37	9.83	13.85	8.97	5.82	6.72
3/13/2024 6:45	7.76	30.51	59.42	7.53	16.3	10.13	5.45	7
3/13/2024 7:00	7.24	43.87	75.58	8.62	31.94	9.62	5.31	6.41
3/13/2024 7:15	8.42	32.42	51.63	5.46	31.49	11.56	6.16	8.21
3/13/2024 7:30	7.81	37.67	68.38	4.81	20.41	12.47	5.34	8.13
3/13/2024 7:45	15.85	30.11	42.16	9.39	28.98	10.07	11.99	8.55
3/13/2024 8:00	20.05	21.9	36.2	13.16	34.5	9.71	6.5	7.53
3/13/2024 8:15	16.21	19.88	31.99	10.32	43.3	9.74	6.07	7.41
3/13/2024 8:30	10.69	20.77	31.17	5.59	13.23	9.65	5.61	7.69
3/13/2024 8:45	9.74	8.4	13.98	6.8	10.85	12.38	5.64	8.41
3/13/2024 9:00	6.95	17.42	33.81	6.21	13.95	9.91	5.93	8.28
3/13/2024 9:15	7.61	11.82	17.21	7.31	11.68	16.07	6.26	9.39
3/13/2024 9:30	11.12	17.92	19.49	7.37	13.88	13.08	6.99	9.29
3/13/2024 9:45	8.36	15.71	25.17	6.96	10.5	11.45	6.96	8.78
3/13/2024 10:00	8.62	9.23	13.21	9.02	10.5	11.6	6.96	8.4
3/13/2024 10:15	10.32	10.34	17.78	6.79	11.54	10.92	7.63	8.58
3/13/2024 10:30	12.26	9.7	19.85	9.8	11.7	12.68	7.26	8.7
3/13/2024 10:45	12.37	8.76	14.71	8.05	8.43	11.18	6.64	8.24
3/13/2024 11:00	8.62	7.95	19.59	6.71	8.12	11.28	6.22	7.56
3/13/2024 11:15	9.75	13.26	17.65	6.68	8.37	10.04	7.22	6.98
3/13/2024 11:30	7.67	9.59	15.4	6.37	7.82	10.81	5.59	7.67
3/13/2024 11:45	10.5	7.53	14.41	6.98	6.76	12.47	5.29	7.12
3/13/2024 12:00	7.25	7.19	11.76	5.69	13.62	11.58	5.77	7.31
3/13/2024 12:15	6.63	7.25	12.75	5.18	7.29	9.54	5.31	6.96
3/13/2024 12:30	6.78	6.97	11.58	5.26	6.83	12.73	5.07	6.99
3/13/2024 12:45	6.63	6.77	12.05	5.69	6.63	16.15	5.32	6.96
3/13/2024 13:00	6.67	7.21	11.59	4.92	6.92	9.53	4.91	6.55
3/13/2024 13:15	5.29	5.63	9.54	3.69	5.34	10.79	3.71	5.23
3/13/2024 13:30	5.49	5.51	9.52	4.27	5.71	13.81	4.06	5.55
3/13/2024 13:45	6.35	6.51	10.31	4.71	6.68	9.14	4.82	6
3/13/2024 14:00	6.39	6.55	11.21	4.85	7.24	9.41	4.69	6.18
3/13/2024 14:15	5.42	5.13	8.88	3.71	5	20.82	3.51	5.48
3/13/2024 14:30	8.14	3.92	8.28	2.97	4.78	18.09	2.73	4.25
3/13/2024 14:45	8.46	3.88	9.02	2.91	4.78	13.37	2.64	4.35
3/13/2024 15:00	4.66	2.95	6.95	2.97	4.11	14.12	2.19	3.73
3/13/2024 15:15	3.9	4.03	8.91	2.66	5.33	9.28	2.64	3.82
3/13/2024 15:30	4.2	4.68	9.44	3.95	6.8	7.99	3.46	4.72
3/13/2024 15:45	4.5	3.59	8.26	2.83	5.68	10.79	3.26	4.27
3/13/2024 16:00	4.02	5	9.38	3.01	5.55	8.09	2.87	4.36
3/13/2024 16:15	14.41	5.11	9.22	3.56	6.21	13.66	3.32	6.47

Daily Readings - PM10
 Data export
 03/13/2024 00:00:00 to 03/13/2024 23:59:00
 Averaging period: 15 minutes

Time	AMS-1	AMS-2	AMS-3	AMS-4	AMS-5	AMS-6	AMS-7	AMS-8
	PM10 - AQS1 13032023-2241 ($\mu\text{g}/\text{m}^3$)	PM10 - AQS1 13032023-2244 ($\mu\text{g}/\text{m}^3$)	PM10 - AQS1 13032023-2240 ($\mu\text{g}/\text{m}^3$)	PM10 - AQS1 13032023-2238 ($\mu\text{g}/\text{m}^3$)	PM10 - AQS1 13032023-2239 ($\mu\text{g}/\text{m}^3$)	PM10 - AQS1 13032023-2237 ($\mu\text{g}/\text{m}^3$)	PM10 - AQS1 13032023-2243 ($\mu\text{g}/\text{m}^3$)	PM10 - AQS1 13032023-2242 ($\mu\text{g}/\text{m}^3$)
3/13/2024 16:30	6.11	5.8	9.66	3.84	6.21	10.46	3.99	5.57
3/13/2024 16:45	7.43	5.76	10.52	3.86	6.42	8.86	3.73	5.43
3/13/2024 17:00	6.99	5.43	9.46	3.91	5.53	9.01	3.82	5.74
3/13/2024 17:15	5.69	5.67	10.4	4.29	6.68	9.6	4.07	5.71
3/13/2024 17:30	6.23	6.32	10.15	4.6	6.84	12.31	4.3	5.98
3/13/2024 17:45	5.77	5.65	9.85	4.14	6.46	8.72	4.17	5.63
3/13/2024 18:00	5.81	5.76	9.77	4.85	7.81	8.98	4.39	6.47
3/13/2024 18:15	5.84	6.91	10.91	4.27	7.74	8.5	4.23	6.3
3/13/2024 18:30	5.88	6.66	11.38	4.69	6.66	8.62	4.85	6.47
3/13/2024 18:45	6.42	7.5	13.65	4.68	7.27	9.36	5.63	7.16
3/13/2024 19:00	6.81	6.09	9.58	5.12	7.05	9.27	5.11	7.66
3/13/2024 19:15	6.68	5.77	7.7	5.02	5.44	9.11	4.82	7.22
3/13/2024 19:30	7.45	6.64	7.97	5.92	6.02	9.7	5.44	8.35
3/13/2024 19:45	7.15	5.92	7.63	5.53	5.64	9.41	5.13	7.83
3/13/2024 20:00	7.27	6.45	8.26	5.93	5.82	9.85	5.34	8.3
3/13/2024 20:15	7.63	6.8	8.48	5.94	6.14	10.27	5.53	8.67
3/13/2024 20:30	7.99	8.04	13.08	6.4	7.39	9.69	5.81	9.03
3/13/2024 20:45	7.96	12.92	22.13	6.17	10.12	10.63	5.88	9.26
3/13/2024 21:00	8.1	15.73	27.03	6.4	10.56	10.48	5.93	9.13
3/13/2024 21:15	9.12	18.53	30.15	6.45	9.11	11.2	6.28	9.51
3/13/2024 21:30	8.58	12.33	21.33	6.54	8.49	10.9	6.19	9.12
3/13/2024 21:45	8.46	15.92	27.26	6.56	10.54	10.41	6.03	9.33
3/13/2024 22:00	8.25	14.43	22.79	6.2	7.79		6.04	
3/13/2024 22:15	8.55	12.89	22.24	6.04	10.2		5.99	
3/13/2024 22:30	9.49	18.42	30.33	6.96	12.86		6.64	
3/13/2024 22:45	8.66	15.29	27.75	6.4	12.82		6.28	
3/13/2024 23:00	9.17	19.46	33.77	7.05	12.49		6.37	
3/13/2024 23:15	9.82	25.09	46.25	6.89	13.81		6.61	12.21
3/13/2024 23:30	10.24	30.17	50.19	8.1	14.68	13.74	7.3	13.76
3/13/2024 23:45	11.3	31.36	45.46	7.61	28.97	13.21	7.78	14.58



Target Analyte	Admin Level	Normal (green)	Alert Limit (yellow)	Response Limit (orange)	Action Limit (red)
Respirable particulate matter (PM10) *	>75 $\mu\text{g}/\text{m}^3$ to 100 $\mu\text{g}/\text{m}^3$ as a 15 minute TWA	≤ 100 $\mu\text{g}/\text{m}^3$ as a 15 minute TWA	>100 $\mu\text{g}/\text{m}^3$ and ≤ 150 $\mu\text{g}/\text{m}^3$ as a 15 minute TWA	See Alert Limit criteria	>150 $\mu\text{g}/\text{m}^3$ as a 15 minute TWA

On Tuesday, March 12, 2024, at approximately 21:47 hours, a CAMP alert was received indicating a Volatile Organic Carbon (VOC) exceedance above the action limit of 1 ppm at the AMS-4 station which is located near the northeast corner of Nevins St. and Degraw St. VOC data from the AMS-4 is shown below.

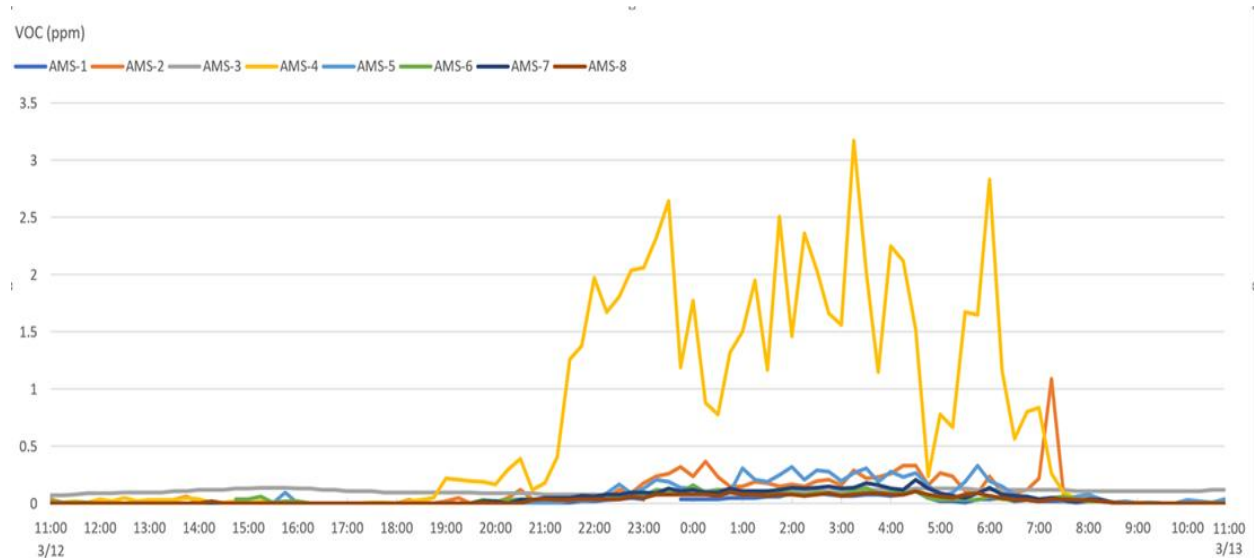


Figure 1: CAMP VOC Data 11am 3/12 to 11am 3/13

At approximately 22:05 on 3/12/2024 the alerts were investigated by members of the Construction Management Team. A Photoionization Detector (PID) was utilized to record VOC readings during the investigation.

A Perimeter Odor inspection with VOC Measurement Mapping was performed and detailed within a Perimeter Odor inspection log that can be found at the end of this document.

During the investigation, while walking northeast up Nevins Street towards the intersection of Nevins St. and Degraw St, VOC readings began to rise as the intersection approached. A strong distinct petroleum odor was noticed. Near the entrance to the neighboring construction site at 265 Nevins St on the southeast corner of Degraw St. and Nevins Street, the PID reached its Lower Alarm Limit of 1.0 PPM and began to flash and alarm. The PID was brought to the “turnstile” entrance of the neighboring construction site on the corner of Nevins and Degraw St., where a maximum reading of 5.0 ppm was observed. Both the readings of the PID and the strength of the odor increased as the southeast corner of Degraw St. and Nevins Street (corner neighboring construction site at 265 Nevins St) was approached.

A “sweep” of the area was performed using the PID to delineate the source of the readings. The PID was “swept” NW towards the Gowanus CSO Site’s Degraw St. Gate, SW down Nevins St., NE up Nevins St., and SE down Degraw St., and through the inner “muck bin soil management area” of the site. PID readings during the sweep implied the source of the strong odor was emanating from neighboring construction site at 265 Nevins St.

The strongest readings during the sweep occurred walking away from the “turnstile” gate, heading SE on the South side of Degraw St, adjacent to 265 Nevins St, most notably near a slide gate installed in the line. Readings at this location reached 6.8PPM. Readings decreased in every direction from this location. The attached Odor Inspection Log provides a more detailed map of the PID readings in each direction from the 6.8ppm (source). Readings decreased in lesser rate downwind from the “source”.

ODOR INSPECTION LOG

Date: 3/12/24
Start Time: 22:05
End Time:
CM Inspectors: R. Carr

Weather: Mostly Clear
Temperature: 54
Wind Speed / Direction: 3-7 mph WNW-ESW
Contractors Inspectors: Julius W.

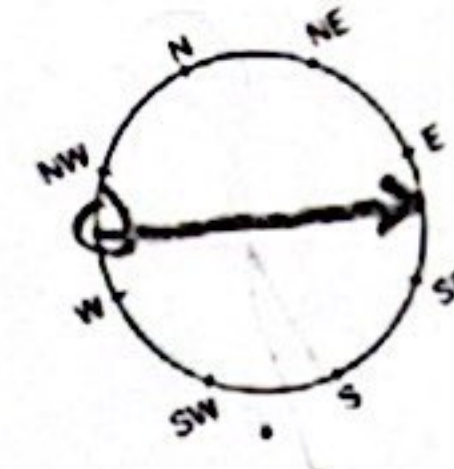
Construction Activities (CA) Performed During Inspection

CA-1 Soils onsite, non-active
CA-2 Inactive Hydromills
CA-3
CA-4
Misting System Operating? (Yes/No) YES
Soils Odor Control Status: framed piles

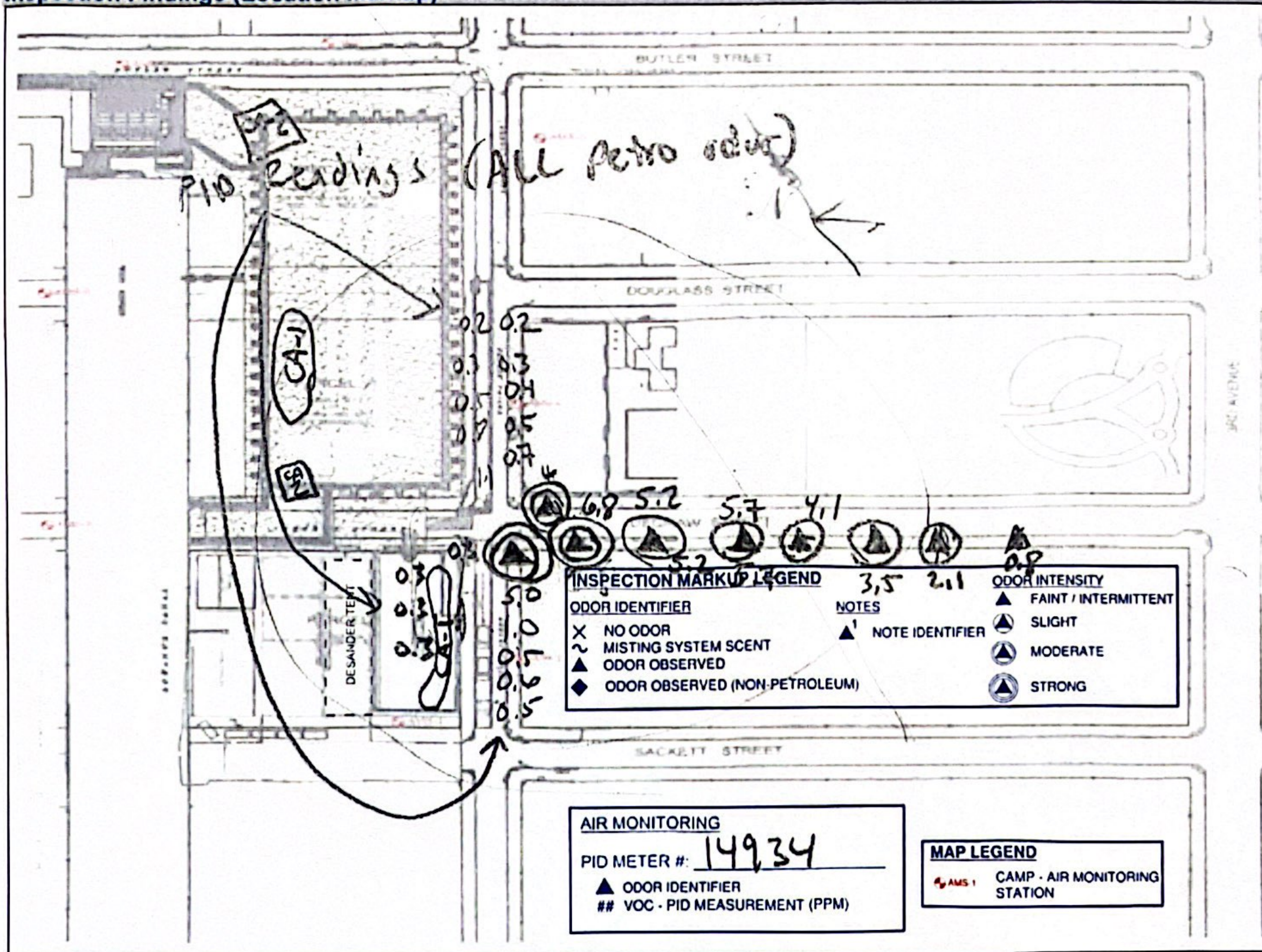
Inspection Findings (Notes)

- 1. Strong petro odors near adjacent construction site, focused
2. inspection in area of Nevins / Degraw St. Performed
3.
4.
5.
6.
7.

WIND DIRECTION



Inspection Findings (Location Markup)



Conclusions / Follow Up Actions:

- No Site generated odors observed outside of Site. No remedial action required.
Odors generated from construction activities encountered offsite. Remedial actions taken:
Other:

NOTE: PID