

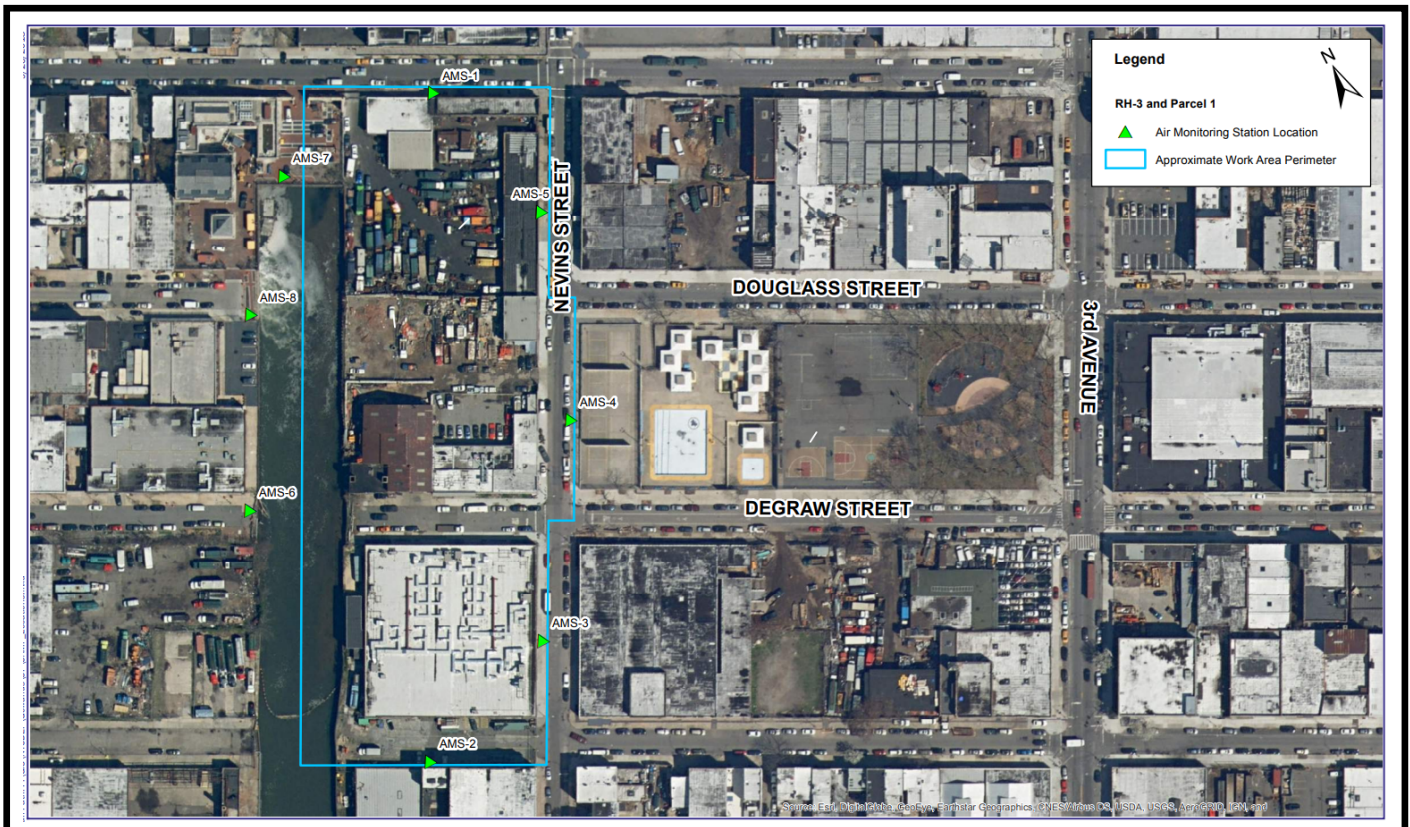
Gowanus CSO Tank - CP2 Daily CAMP Report

Date:

This Daily Air Monitoring Report summarizes perimeter air monitoring data collected during the referenced period in accordance with the Community Air Monitoring Plan (CAMP) which was included as part of the requirements of Spec Section 01 57 00 Temporary Controls for the Gowanus CSO-GC-SFS-RH3 CP2 Contract. Note: the information included in this daily summary is based on preliminary results and is subject to change based on data validation.

Reporting Period:	
Weather	Temperature: °F Wind Speed: Precipitation: Prevailing Wind Direction: Relative Humidity:
Summary of Site Activities	1. CAMP monitoring approximately from 6AM to 2AM(next day). 2. Slurry Wall Excavation Operations. 3. There were no 15 min average exceedances for VOC's or PM10 over the course of the day.

Figure 1 - CAMP Station Locations



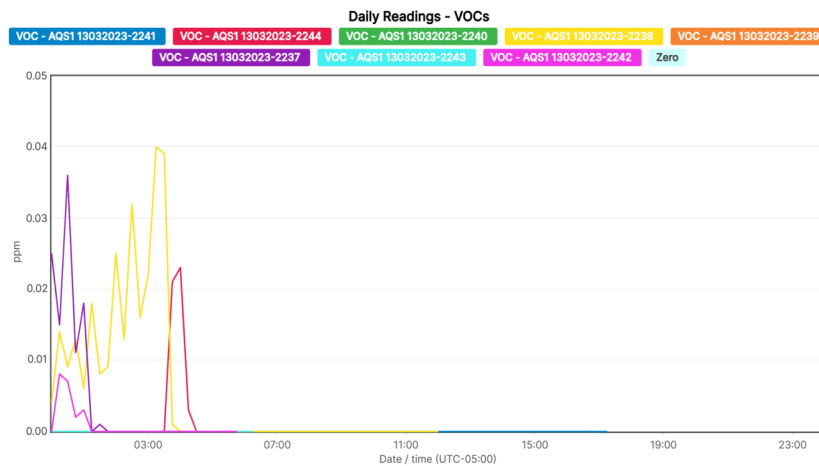
Daily Readings - VOCs

Data export

01/13/2024 00:00:00 to 01/13/2024 23:59:00

Averaging period: 15 minutes

Time	AMS-1	AMS-2	AMS-3	AMS-4	AMS-5	AMS-6	AMS-7	AMS-8
	VOC - AQS1 13032023-2241 (ppm)	VOC - AQS1 13032023-2244 (ppm)	VOC - AQS1 13032023-2240 (ppm)	VOC - AQS1 13032023-2238 (ppm)	VOC - AQS1 13032023-2239 (ppm)	VOC - AQS1 13032023-2237 (ppm)	VOC - AQS1 13032023-2243 (ppm)	VOC - AQS1 13032023-2242 (ppm)
1/13/2024 0:00	0	0	0	0	0	0.02	0	0
1/13/2024 0:15	0	0	0	0.01	0	0.01	0	0.01
1/13/2024 0:30	0	0	0	0.01	0	0.04	0	0.01
1/13/2024 0:45	0	0	0	0.01	0	0.01	0	0
1/13/2024 1:00	0	0	0	0.01	0	0.02	0	0
1/13/2024 1:15	0	0	0	0.02	0	0	0	0
1/13/2024 1:30	0	0	0	0.01	0	0	0	0
1/13/2024 1:45	0	0	0	0.01	0	0	0	0
1/13/2024 2:00	0	0	0	0.02	0	0	0	0



Target Analyte	Admin Level	Normal (green)	Alert Limit (yellow)	Response Limit (orange)	Action Limit (red)
Volatile Organic Compounds *	Between 0.3 and < 0.5 ppm as a 15 minute TWA	Below or equal to 0.5 ppm as a 15 minute TWA	>0.5 ppm and <=0.75 ppm as a 15 minute TWA or odors are observed	>0.75 to < 1.0 ppm as a 15 minute TWA or odors are observed	>=1 ppm as a 15 minute TWA or if odors are observed**

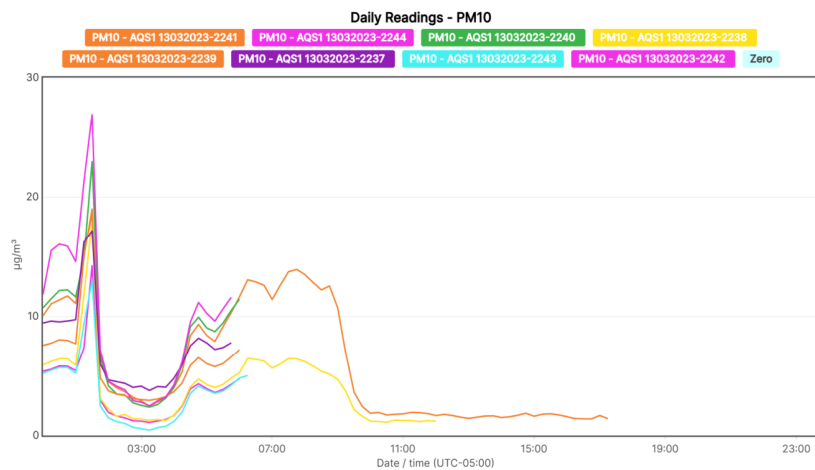
Daily Readings - PM10

Data export

01/13/2024 00:00:00 to 01/13/2024 23:59:00

Averaging period: 15 minutes

Time	AMS-1	AMS-2	AMS-3	AMS-4	AMS-5	AMS-6	AMS-7	AMS-8
	PM10 - AQS1 13032023-2241 (µg/m³)	PM10 - AQS1 13032023-2244 (µg/m³)	PM10 - AQS1 13032023-2240 (µg/m³)	PM10 - AQS1 13032023-2238 (µg/m³)	PM10 - AQS1 13032023-2239 (µg/m³)	PM10 - AQS1 13032023-2237 (µg/m³)	PM10 - AQS1 13032023-2243 (µg/m³)	PM10 - AQS1 13032023-2242 (µg/m³)
1/13/2024 0:00	10.04	5.36	10.7	5.9	7.56	9.44	5.2	11.82
1/13/2024 0:15	11.03	5.54	11.46	6.19	7.75	9.6	5.46	15.47
1/13/2024 0:30	11.36	5.81	12.15	6.42	8.03	9.53	5.69	16.03
1/13/2024 0:45	11.7	5.79	12.21	6.41	7.98	9.61	5.68	15.84
1/13/2024 1:00	11.06	5.43	11.6	5.89	7.69	9.72	5.2	14.56
1/13/2024 1:15	15.37	7.34	14.76	11.71	14.96	16.19	9.33	21.23
1/13/2024 1:30	18.5	14.2	22.94	17.98	19	17.16	13	26.91
1/13/2024 1:45	6.72	2.93	6.56	3.08	4.8	5.97	2.46	7.15
1/13/2024 2:00	4.48	1.91	4.13	2.18	3.73	4.64	1.46	4.54



Target Analyte	Admin Level	Normal (green)	Alert Limit (yellow)	Response Limit (orange)	Action Limit (red)
Respirable particulate matter (PM10) *	>75 ug/m3 to 100 ug/m3 as a 15 minute TWA	<=100 ug/m3 as a 15 minute TWA	>100 ug/m3 and <=150 ug/m3 as a 15 minute TWA	See Alert Limit criteria	>150 ug/m3 as a 15 minute TWA