

Gowanus CSO Tank - CP2 Daily CAMP Report

Date: 2/27/2024

This Daily Air Monitoring Report summarizes perimeter air monitoring data collected during the referenced period in accordance with the Community Air Monitoring Plan (CAMP) which was included as part of the requirements of Spec Section 01 57 00 Temporary Controls for the Gowanus CSO-GC-SFS-RH3 CP2 Contract. Note: the information included in this daily summary is based on preliminary results and is subject to change based on data validation.

Report Period:	Tuesday, February 27, 2024	
Weather	Temperature: 42.4-55.1 °F Precipitation: 0.00 inch Relative Humidity: 83.23%	Wind Speed: 0.33-2.20 mph Prevailing Wind Direction: W
Summary of Site Activities	<ol style="list-style-type: none"> 1. CAMP monitoring approximately 24 hours a day. 2. Slurry Wall Excavation Operations. 3. There were no 15 min average exceedances for VOC over the course of the day. For PM10, AMS-3 and AMS-5 were triggered, camp was set off due to mist from the odor-neutralizing misting system. Alert not connected with work being performed. 	

Figure 1 - CAMP Station Locations

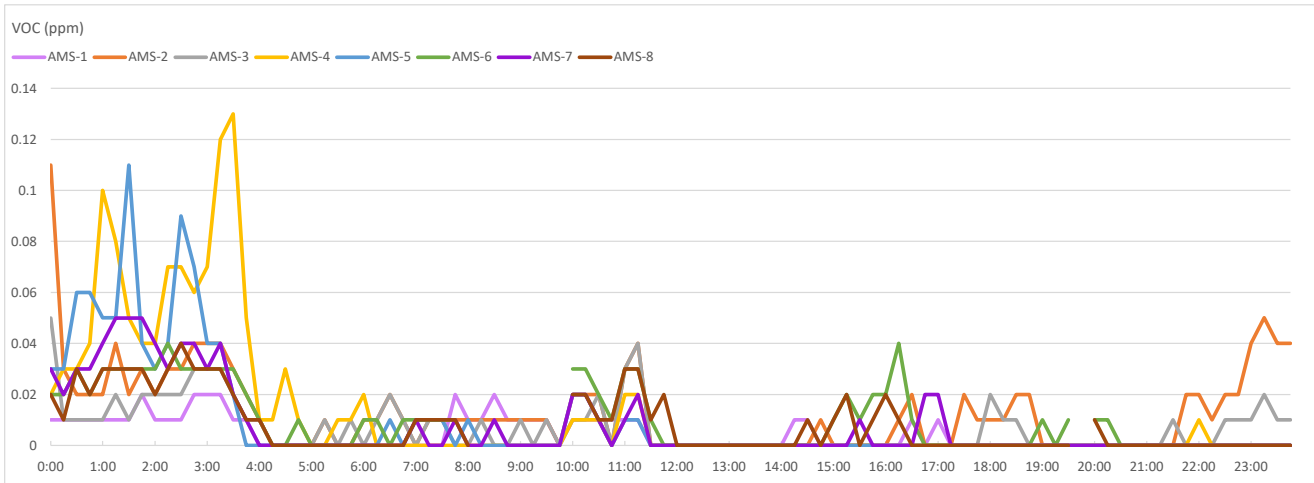


Daily Readings - VOCs
 Data export
 02/27/2024 00:00:00 to 02/27/2024 23:59:00
 Averaging period: 15 minutes

Time	AMS-1	AMS-2	AMS-3	AMS-4	AMS-5	AMS-6	AMS-7	AMS-8
	VOC - AQS1 13032023-2241 (ppm)	VOC - AQS1 13032023-2244 (ppm)	VOC - AQS1 13032023-2240 (ppm)	VOC - AQS1 13032023-2238 (ppm)	VOC - AQS1 13032023-2239 (ppm)	VOC - AQS1 13032023-2237 (ppm)	VOC - AQS1 13032023-2243 (ppm)	VOC - AQS1 13032023-2242 (ppm)
2/27/2024 0:00	0.01	0.11	0.05	0.02	0.03	0.02	0.03	0.02
2/27/2024 0:15	0.01	0.03	0.01	0.03	0.03	0.02	0.02	0.01
2/27/2024 0:30	0.01	0.02	0.01	0.03	0.06	0.03	0.03	0.03
2/27/2024 0:45	0.01	0.02	0.01	0.04	0.06	0.02	0.03	0.02
2/27/2024 1:00	0.01	0.02	0.01	0.1	0.05	0.03	0.04	0.03
2/27/2024 1:15	0.01	0.04	0.02	0.08	0.05	0.03	0.05	0.03
2/27/2024 1:30	0.01	0.02	0.01	0.05	0.11	0.03	0.05	0.03
2/27/2024 1:45	0.02	0.03	0.02	0.04	0.04	0.03	0.05	0.03
2/27/2024 2:00	0.01	0.02	0.02	0.04	0.03	0.03	0.04	0.02
2/27/2024 2:15	0.01	0.03	0.02	0.07	0.04	0.04	0.03	0.03
2/27/2024 2:30	0.01	0.03	0.02	0.07	0.09	0.03	0.04	0.04
2/27/2024 2:45	0.02	0.04	0.03	0.06	0.07	0.03	0.04	0.03
2/27/2024 3:00	0.02	0.04	0.03	0.07	0.04	0.03	0.03	0.03
2/27/2024 3:15	0.02	0.04	0.03	0.12	0.04	0.03	0.04	0.03
2/27/2024 3:30	0.01	0.03	0.02	0.13	0.02	0.03	0.02	0.02
2/27/2024 3:45	0.01	0.02	0.01	0.05	0	0.02	0.01	0.01
2/27/2024 4:00	0	0.01	0.01	0.01	0	0.01	0	0.01
2/27/2024 4:15	0	0	0	0.01	0	0	0	0
2/27/2024 4:30	0	0	0	0.03	0	0	0	0
2/27/2024 4:45	0	0	0	0.01	0	0.01	0	0
2/27/2024 5:00	0	0	0	0	0	0	0	0
2/27/2024 5:15	0	0.01	0.01	0	0	0	0	0
2/27/2024 5:30	0	0	0	0.01	0	0	0	0
2/27/2024 5:45	0	0	0.01	0.01	0	0	0	0
2/27/2024 6:00	0	0.01	0	0.02	0	0.01	0	0
2/27/2024 6:15	0	0.01	0.01	0	0	0.01	0	0
2/27/2024 6:30	0	0.02	0.02	0	0.01	0	0	0
2/27/2024 6:45	0	0.01	0.01	0	0	0.01	0	0
2/27/2024 7:00	0	0	0	0	0.01	0.01	0.01	0.01
2/27/2024 7:15	0	0.01	0.01	0	0.01	0.01	0	0.01
2/27/2024 7:30	0	0.01	0.01	0	0.01	0.01	0	0.01
2/27/2024 7:45	0.02	0.01	0	0	0	0.01	0.01	0.01
2/27/2024 8:00	0.01	0.01	0	0	0.01		0	0
2/27/2024 8:15	0.01	0.01	0.01	0	0		0	
2/27/2024 8:30	0.02	0.01	0	0	0		0.01	
2/27/2024 8:45	0.01	0.01	0	0	0		0	
2/27/2024 9:00	0.01	0.01	0.01	0	0		0	
2/27/2024 9:15	0.01	0.01	0	0	0		0	
2/27/2024 9:30	0.01	0.01	0.01	0	0		0	
2/27/2024 9:45	0	0	0	0	0		0	
2/27/2024 10:00	0.01	0.02	0.01	0.01	0.02	0.03	0.02	0.02
2/27/2024 10:15	0.01	0.02	0.01	0.01	0.02	0.03	0.02	0.02
2/27/2024 10:30	0.01	0.02	0.02	0.01	0.01	0.02	0.01	0.01
2/27/2024 10:45	0.01	0	0	0	0	0.01	0	0.01
2/27/2024 11:00	0.01	0.03	0.03	0.02	0.01	0.03	0.01	0.03
2/27/2024 11:15	0.01	0.04	0.04	0.02	0.01	0.03	0.02	0.03
2/27/2024 11:30	0	0	0	0	0	0.01	0	0.01
2/27/2024 11:45	0	0	0	0	0	0	0	0.02
2/27/2024 12:00	0	0	0	0	0	0	0	0
2/27/2024 12:15	0	0	0	0	0	0	0	0
2/27/2024 12:30	0	0	0	0	0	0	0	0
2/27/2024 12:45	0	0	0	0	0	0	0	0
2/27/2024 13:00	0	0	0	0	0	0	0	0
2/27/2024 13:15	0	0	0	0	0	0	0	0
2/27/2024 13:30	0	0	0	0	0	0	0	0
2/27/2024 13:45	0	0	0	0	0	0	0	0
2/27/2024 14:00	0	0	0	0	0	0	0	0
2/27/2024 14:15	0.01	0	0	0	0	0	0	0
2/27/2024 14:30	0.01	0	0	0	0	0	0	0.01
2/27/2024 14:45	0	0.01	0	0	0	0	0	0
2/27/2024 15:00	0	0	0	0	0	0.01	0	0.01
2/27/2024 15:15	0	0	0	0	0	0.02	0	0.02
2/27/2024 15:30	0	0	0	0	0	0.01	0.01	0
2/27/2024 15:45	0	0	0	0	0	0.02	0	0.01
2/27/2024 16:00	0	0	0	0	0	0.02	0	0.02
2/27/2024 16:15	0	0.01	0	0	0	0.04	0	0.01

Daily Readings - VOCs
 Data export
 02/27/2024 00:00:00 to 02/27/2024 23:59:00
 Averaging period: 15 minutes

Time	AMS-1	AMS-2	AMS-3	AMS-4	AMS-5	AMS-6	AMS-7	AMS-8
	VOC - AQS1 13032023-2241 (ppm)	VOC - AQS1 13032023-2244 (ppm)	VOC - AQS1 13032023-2240 (ppm)	VOC - AQS1 13032023-2238 (ppm)	VOC - AQS1 13032023-2239 (ppm)	VOC - AQS1 13032023-2237 (ppm)	VOC - AQS1 13032023-2243 (ppm)	VOC - AQS1 13032023-2242 (ppm)
2/27/2024 16:30	0.01	0.02	0	0	0	0.01	0	0
2/27/2024 16:45	0	0	0	0	0	0	0.02	0
2/27/2024 17:00	0.01	0	0	0	0	0	0.02	0
2/27/2024 17:15	0	0	0	0	0	0	0	0
2/27/2024 17:30	0	0.02	0	0	0	0	0	0
2/27/2024 17:45	0	0.01	0	0	0	0	0	0
2/27/2024 18:00	0	0.01	0.02	0	0	0	0	0
2/27/2024 18:15	0	0.01	0.01	0	0	0	0	0
2/27/2024 18:30	0	0.02	0.01	0	0	0	0	0
2/27/2024 18:45	0	0.02	0	0	0	0	0	0
2/27/2024 19:00	0	0	0	0	0	0.01	0	0
2/27/2024 19:15	0	0	0	0	0	0	0	0
2/27/2024 19:30	0	0	0	0	0	0.01	0	0
2/27/2024 19:45	0	0	0	0	0		0	
2/27/2024 20:00	0	0	0	0	0	0.01	0	0.01
2/27/2024 20:15	0	0	0	0	0	0.01	0	0
2/27/2024 20:30	0	0	0	0	0	0	0	0
2/27/2024 20:45	0	0	0	0	0	0	0	0
2/27/2024 21:00	0	0	0	0	0	0	0	0
2/27/2024 21:15	0	0	0	0	0	0	0	0
2/27/2024 21:30	0	0	0.01	0	0	0	0	0
2/27/2024 21:45	0	0.02	0	0	0	0	0	0
2/27/2024 22:00	0	0.02	0	0.01	0	0	0	0
2/27/2024 22:15	0	0.01	0	0	0	0	0	0
2/27/2024 22:30	0	0.02	0.01	0	0	0	0	0
2/27/2024 22:45	0	0.02	0.01	0	0	0	0	0
2/27/2024 23:00	0	0.04	0.01	0	0	0	0	0
2/27/2024 23:15	0	0.05	0.02	0	0	0	0	0
2/27/2024 23:30	0	0.04	0.01	0	0	0	0	0
2/27/2024 23:45	0	0.04	0.01	0	0	0	0	0



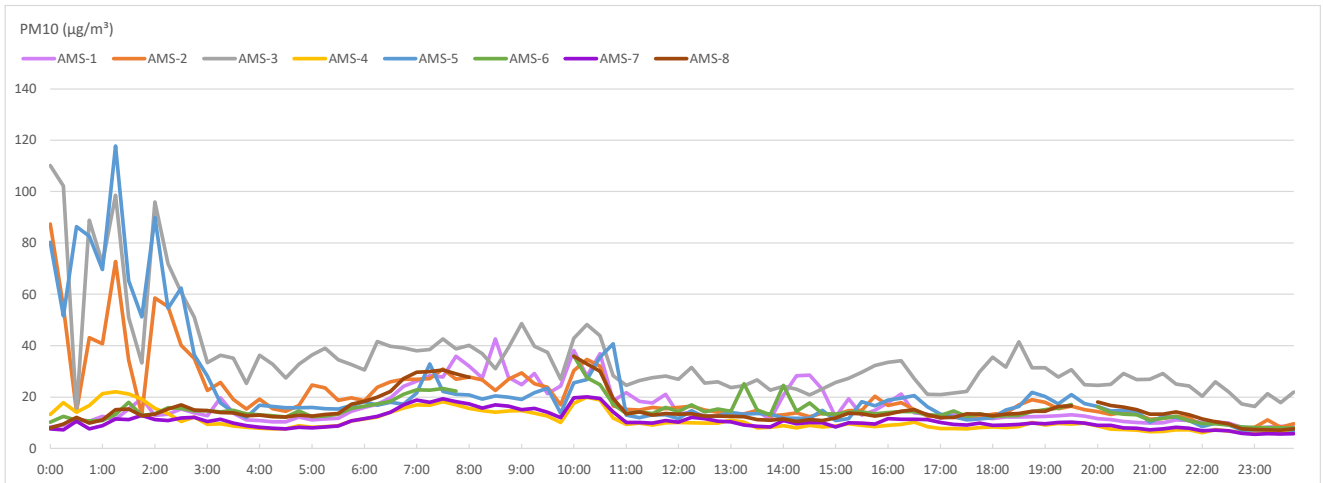
Target Analyte	Admin Level	Normal (green)	Alert Limit (yellow)	Response Limit (orange)	Action Limit (red)
Volatile Organic Compounds *	Between 0.3 and < 0.5 ppm as a 15 minute TWA	Below or equal to 0.5 ppm as a 15 minute TWA	>0.5 ppm and <=0.75 ppm as a 15 minute TWA or odors are observed	>0.75 to < 1.0 ppm as a 15 minute TWA or odors are observed	>=1 ppm as a 15 minute TWA or if odors are observed**

Daily Readings - PM10
 Data export
 02/27/2024 00:00:00 to 02/27/2024 23:59:00
 Averaging period: 15 minutes

Time	AMS-1	AMS-2	AMS-3	AMS-4	AMS-5	AMS-6	AMS-7	AMS-8
	PM10 - AQS1 13032023-2241 (µg/m³)	PM10 - AQS1 13032023-2244 (µg/m³)	PM10 - AQS1 13032023-2240 (µg/m³)	PM10 - AQS1 13032023-2238 (µg/m³)	PM10 - AQS1 13032023-2239 (µg/m³)	PM10 - AQS1 13032023-2237 (µg/m³)	PM10 - AQS1 13032023-2243 (µg/m³)	PM10 - AQS1 13032023-2242 (µg/m³)
2/27/2024 0:00	8.34	87.41	110.22	13.23	80.23	10.17	7.66	7.92
2/27/2024 0:15	8.96	55.02	102.2	17.79	51.54	12.5	7.28	9.53
2/27/2024 0:30	11.46	14.52	14.54	14.12	86.31	11	10.61	12.1
2/27/2024 0:45	10.59	43.17	88.8	16.73	82.56	10.74	7.6	9.88
2/27/2024 1:00	12.52	40.8	72.04	21.26	69.62	10.79	8.9	11.08
2/27/2024 1:15	11.35	72.73	98.57	22.02	117.76	13.2	11.52	15.1
2/27/2024 1:30	15.32	34.45	51	21.13	65.24	18	11.28	15.36
2/27/2024 1:45	19.38	13.07	33.31	19.25	51.15	12.82	12.87	12.68
2/27/2024 2:00	12.83	58.54	95.99	15.52	89.94	13.52	11.28	13.36
2/27/2024 2:15	13.31	55.17	71.87	13.55	54.58	15.84	10.81	15.36
2/27/2024 2:30	15.3	40.09	60.76	10.42	62.37	15.62	11.88	16.89
2/27/2024 2:45	13.81	35.01	51.04	12.23	36.4	14.61	12.15	14.9
2/27/2024 3:00	12.76	22.56	33.41	9.36	28.13	14.74	10.5	14.76
2/27/2024 3:15	19.63	25.63	36.32	9.58	17.73	14.16	11.35	13.98
2/27/2024 3:30	13.76	19.01	35.18	8.7	14.13	14.87	9.79	13.86
2/27/2024 3:45	11.13	15.35	25.27	8.26	12.08	13.45	8.91	12.69
2/27/2024 4:00	10.83	19.15	36.26	7.89	16.78	13.07	8.2	13.01
2/27/2024 4:15	10.41	15.49	32.78	7.63	16.28	12.67	7.81	12.38
2/27/2024 4:30	10.4	14.52	27.46	7.56	15.87	12.25	7.66	12.2
2/27/2024 4:45	12.25	16.68	32.77	8.83	15.88	14.63	8.26	12.97
2/27/2024 5:00	11.13	24.69	36.41	8.2	15.98	12.35	8.04	12.53
2/27/2024 5:15	11.41	23.52	39.04	8.5	15.48	12.65	8.41	13.26
2/27/2024 5:30	11.72	18.67	34.47	8.83	15.35	13.3	8.79	13.6
2/27/2024 5:45	14.48	19.65	32.61	10.7	16.73	15.58	10.74	17.19
2/27/2024 6:00	15.95	18.51	30.51	11.46	18.24	16.51	11.6	18.38
2/27/2024 6:15	17.26	23.78	41.66	12.2	16.84	17.33	12.43	19.98
2/27/2024 6:30	19.74	25.95	39.75	14.12	18	18.3	14.06	22.13
2/27/2024 6:45	24.21	26.92	39.08	15.68	17.17	21.03	16.94	27.19
2/27/2024 7:00	26.12	26.91	38.02	17.01	21.56	22.83	18.77	29.65
2/27/2024 7:15	28.3	27.19	38.54	16.84	32.93	22.74	17.99	29.91
2/27/2024 7:30	27.82	30.93	42.66	18.18	22.21	23.3	19.28	30.55
2/27/2024 7:45	35.87	26.87	38.78	16.89	21	22.29	18.17	28.99
2/27/2024 8:00	32.08	27.81	40.15	15.58	20.8		17.35	27.71
2/27/2024 8:15	27.45	26.71	36.82	14.73	19.14		15.75	
2/27/2024 8:30	42.64	22.6	31.07	14.11	20.49		16.94	
2/27/2024 8:45	27.66	26.91	39.21	14.6	19.93		16.42	
2/27/2024 9:00	24.75	29.4	48.55	14.67	19.1		15.04	
2/27/2024 9:15	29.16	25.12	39.78	13.75	21.73		15.53	
2/27/2024 9:30	21.35	23.78	37.37	12.61	23.37		14.13	
2/27/2024 9:45	24.31	16.94	26.95	10.06	13.74		11.93	
2/27/2024 10:00	38.09	30.33	42.92	17.59	25.5	36.04	19.65	35.96
2/27/2024 10:15	28.21	34.69	48.24	19.96	26.76	27.55	20.06	32.87
2/27/2024 10:30	36.87	32.07	43.85	18.82	35.55	24.77	19.48	30.09
2/27/2024 10:45	18.54	16.52	28.27	11.88	40.72	17.21	14.24	19.5
2/27/2024 11:00	21.7	15.22	24.6	9.33	12.95	13.58	10.15	13.52
2/27/2024 11:15	18.29	15	26.42	9.84	11.97	14.2	10.14	14.27
2/27/2024 11:30	17.72	15.96	27.52	9.09	13.03	13.61	9.87	13
2/27/2024 11:45	21.03	15.47	28.22	10.01	13.13	15.96	10.84	13.54
2/27/2024 12:00	13.39	15.98	26.89	10.12	11.61	14.33	10.23	13.35
2/27/2024 12:15	14.17	16.45	31.51	9.96	14.67	16.97	12.06	13.45
2/27/2024 12:30	12.53	14.94	25.39	9.83	12.12	14.18	11.64	12.54
2/27/2024 12:45	12.63	14.1	25.87	9.86	12.67	15.31	10.6	12.64
2/27/2024 13:00	13.49	13.69	23.63	10.95	13.94	14.45	10.36	12.45
2/27/2024 13:15	13.5	13.4	24.43	10.23	13.39	25.16	9.08	12.37
2/27/2024 13:30	14.53	14.84	26.71	7.99	13.55	14.98	8.61	11.23
2/27/2024 13:45	11.24	12.75	22.66	8.21	13.32	13.1	8.31	11.03
2/27/2024 14:00	20.63	13.14	24.15	8.89	11.8	24.57	10.81	11.47
2/27/2024 14:15	28.24	13.8	23.04	8.02	11.69	14.52	9.6	10.53
2/27/2024 14:30	28.57	12.38	20.78	8.99	11.76	17.74	10.08	11.16
2/27/2024 14:45	22.92	13.71	23.23	8.4	14.79	13.51	10.03	10.9
2/27/2024 15:00	12.23	13.15	25.66	8.76	10.88	13.29	8.41	11.88
2/27/2024 15:15	19.35	14.71	27.24	9.66	11.58	14.11	9.96	13.72
2/27/2024 15:30	13.01	14.8	29.65	8.97	18.16	14.25	9.89	13.46
2/27/2024 15:45	14.86	20.28	32.33	8.45	16.52	13.45	9.48	12.54
2/27/2024 16:00	17.81	16.65	33.56	8.97	18.85	13.99	11.56	13.3
2/27/2024 16:15	21.22	17.77	34.18	9.32	19.56	14.37	11.4	14.41

Daily Readings - PM10
 Data export
 02/27/2024 00:00:00 to 02/27/2024 23:59:00
 Averaging period: 15 minutes

Time	AMS-1	AMS-2	AMS-3	AMS-4	AMS-5	AMS-6	AMS-7	AMS-8
	PM10 - AQS1 13032023-2241 ($\mu\text{g}/\text{m}^3$)	PM10 - AQS1 13032023-2244 ($\mu\text{g}/\text{m}^3$)	PM10 - AQS1 13032023-2240 ($\mu\text{g}/\text{m}^3$)	PM10 - AQS1 13032023-2238 ($\mu\text{g}/\text{m}^3$)	PM10 - AQS1 13032023-2239 ($\mu\text{g}/\text{m}^3$)	PM10 - AQS1 13032023-2237 ($\mu\text{g}/\text{m}^3$)	PM10 - AQS1 13032023-2243 ($\mu\text{g}/\text{m}^3$)	PM10 - AQS1 13032023-2242 ($\mu\text{g}/\text{m}^3$)
2/27/2024 16:30	13.84	15.12	27.13	10.26	20.55	14.35	11.37	15.03
2/27/2024 16:45	13.36	12.58	21.08	8.42	16.15	13.09	11.24	13.05
2/27/2024 17:00	11.74	12.47	20.9	7.78	13.29	12.81	10.04	11.96
2/27/2024 17:15	13.21	12.04	21.58	7.73	12.31	14.63	9.37	12.11
2/27/2024 17:30	12.27	11.91	22.16	7.63	11.13	12.45	9.13	13.42
2/27/2024 17:45	12.14	12.28	29.83	8.14	11.52	13.44	9.85	13.37
2/27/2024 18:00	11.57	13.29	35.53	8.31	11.97	12.51	8.97	12.68
2/27/2024 18:15	12.27	13.77	31.65	8.14	15.01	12.73	9.14	13.32
2/27/2024 18:30	12.23	16.99	41.43	8.47	16.28	12.86	9.38	13.58
2/27/2024 18:45	12.39	18.93	31.45	10.13	21.78	14.31	9.82	14.44
2/27/2024 19:00	12.5	17.98	31.38	9.12	20.17	15.13	9.62	14.5
2/27/2024 19:15	12.7	15.45	27.81	9.73	17.28	15.75	10.16	16.36
2/27/2024 19:30	13.13	16.47	30.63	9.51	20.91	17.07	10.24	16.63
2/27/2024 19:45	12.58	15.09	24.74	9.79	17.44		9.8	
2/27/2024 20:00	11.59	14.39	24.6	8.71	16.31	16.18	8.98	18.02
2/27/2024 20:15	11.28	13.17	24.91	7.54	14.62	13.98	9.03	16.7
2/27/2024 20:30	10.51	14.12	29.15	7.42	14.82	13.33	8.02	16.05
2/27/2024 20:45	10.12	13.55	26.81	7.08	14.51	13.07	7.85	15.09
2/27/2024 21:00	9.8	11.29	26.89	6.53	10.22	10.91	7.28	13.37
2/27/2024 21:15	9.97	11.74	29.2	6.61	12.3	11.76	7.57	13.3
2/27/2024 21:30	11.08	12.42	25.09	7.21	12.13	12.48	8.2	14.17
2/27/2024 21:45	10.9	11.91	24.25	7.24	10.79	10.75	7.86	13.04
2/27/2024 22:00	10.09	8.58	20.26	6.14	8.51	9.76	6.9	11.51
2/27/2024 22:15	10.33	10.46	25.87	7.39	9.81	9.63	7.11	10.38
2/27/2024 22:30	9.84	9.2	22	6.76	9.23	9.15	6.88	9.62
2/27/2024 22:45	8.29	7.72	17.36	6.32	7.05	8.4	5.85	7.59
2/27/2024 23:00	7.99	8.27	16.28	6.22	7.18	8.14	5.52	7.31
2/27/2024 23:15	8.25	11.13	21.36	6.33	7.36	8.07	5.68	7.21
2/27/2024 23:30	8.65	8.18	17.81	6.44	7.79	8.02	5.63	7.11
2/27/2024 23:45	8.34	9.57	21.92	6.5	7.02	7.98	5.72	7.59



Target Analyte	Admin Level	Normal (green)	Alert Limit (yellow)	Response Limit (orange)	Action Limit (red)
Respirable particulate matter (PM10) *	>75 $\mu\text{g}/\text{m}^3$ to 100 $\mu\text{g}/\text{m}^3$ as a 15 minute TWA	≤ 100 $\mu\text{g}/\text{m}^3$ as a 15 minute TWA	>100 $\mu\text{g}/\text{m}^3$ and ≤ 150 $\mu\text{g}/\text{m}^3$ as a 15 minute TWA	See Alert Limit criteria	>150 $\mu\text{g}/\text{m}^3$ as a 15 minute TWA