

<b>PROJECT:</b>	Former Fulton MGP – Parcels III and IV (Site No.: 224051)
<b>ADDRESS:</b>	545 Sackett St., Brooklyn, NY
<b>PREPARED BY:</b>	Roux Environmental Engineering and Geology, D.P.C.
<b>DATE:</b>	April 25, 2024
<b>WEATHER:</b>	Temp: 42-56°F, Cloudy, RH: 53% Pressure: 30.33" in Hg Wind: NE @ 10 mph
<b>TIME:</b>	07:00 – 15:30

### Project Team

#### General Contractor and Subcontractors:

- Mega Contracting Group, LLC (Mega)
- Creamer Environmental, Inc. (CEI)
- Earth Construction Services, LLC (ECS)

#### Engineers and Consultants:

- Roux Environmental Engineering and Geology, D.P.C. (Roux)
- GZA GeoEnvironmental Inc. of New York (GZANY)
- WSP USA (WSP)

### Remedial Action Work Summary

#### Work Activities Performed Onsite:

- Excavation and loadout of material for offsite disposal at CMW Emelle.
- Continue dewatering operations for Gas Holder 3 excavation area.

#### Contractor Work Performed Onsite:

Creamer Environmental Inc. (CEI) excavated material and loaded out 10 trucks of MGP impacted material with TCE >25 ppm from waste characterization grids WC-GHE (13-20) and WC-GHN (13-20) for disposal at Chemical Waste Management (CMW) Emelle. CEI begins the demolition of the former Gas Holder 3 walls and reducing oversized material from both the foundation structure and backfilled material found inside the gas holder foundation. This material was stabilized and staged for future loadout.

Earth Construction Services, LLC (ECS) continued 24-hour operation of the dewatering system for the Gas Holder 3 excavation area. Since the last reporting period, CEI treated approximately 913,000 gallons of recovered construction wastewater through the water treatment system (WTS) and discharged the treated water to the New York City Department of Environmental Protection (NYCDEP) combined sewer system. Routine maintenance to onsite equipment including dewatering and water treatment systems.

The vapor management system (VMS) associated with the tension fabric structure (TFS) was operated throughout the day. Other dust and odor control measures (wetting, tarping, limiting vehicle speeds, covering trucks inside TFS, spraying loaded material with odor suppressant, etc.) continued to be performed to ensure there were no impacts to the neighborhood. Exposed soils were covered with Atmos odor suppressing foam during the operations and at the conclusion of the workday.

#### Air Monitoring:

- No VOC or dust exceedances were observed from the community air monitoring program (CAMP).
- GZANY to provide a summary report of CAMP activities separately.

#### Erosion and Sediment Control:

- Weekly SWPPP inspection performed.

#### Sampling Conducted:

- Effluent sample was collected for NYCDEP discharge parameters.

**DAILY STATUS REPORT**

<b>PROJECT:</b>	Former Fulton MGP – Parcels III and IV (Site No.: 224051)
<b>ADDRESS:</b>	545 Sackett St., Brooklyn, NY
<b>PREPARED BY:</b>	Roux Environmental Engineering and Geology, D.P.C.
<b>DATE:</b>	April 25, 2024
<b>WEATHER:</b>	Temp: 42-56°F, Cloudy, RH: 53% Pressure: 30.33" in Hg Wind: NE @ 10 mph
<b>TIME:</b>	07:00 – 15:30

**Other Items of Note:**

- Construction activities were observed as part of the ongoing combined sewer overflow (CSO) project west of Nevins Street.

**Imported Material**

Name - Location	Source	During This Reporting Period		Total	
		Loads	Tons	Loads	Tons
None.					

**Exported Material**

Material	Facility	During This Reporting Period		Total	
		Loads	Tons	Loads	Tons
TCE Impacted Haz Hot Spots	CWM Emelle			7	161.72
Cd Impacted Haz Material from WC-5	CWM Emelle			3	49.45
Pb Impacted Haz from Parcel IV Hot Spot	CWM Emelle			25	536.72
Cd Impacted Haz Material from WC-5	Clean Earth (CE) NJ			16	397.75
Concrete for Recycling	Bayshore			27	~509.87
Concrete for Landfill	WM Fairless			63	~1,415.93
Urban Fill for CVOC Orange Zone (Lot 17)	WM Fairless Urban Fill-OZ			47	~1034
Urban Fill for CVOC Orange Zone (Lot 49)	WM Fairless Urban Fill-OZ			24	~528
Non-Haz Urban Fill (Lot 17)	CE Carteret			42	~924
Non-Haz Urban Fill (Lot 49)	CE Carteret			73	~1,606
MGP soil with TCE>25 ppm	CE ESMI			181	~3,906
	CE Southeast Pennsylvania			10	~220
	CMW Emelle	10	200	275	~5,500
Non-Haz MGP Impacted (TCLP Benzene > 0.5)	CE Southeast Pennsylvania			8	~237.97
Non-Haz MGP Impacted (TCLP Benzene < 0.5)	CE Southeast Pennsylvania			119	~2,614
Non-Haz Contaminated Urban Fill	WM Fairless			387	~8,134.69
Non-Haz Urban Fill	CE Carteret -BZ			71	~1,562
Non-Haz MGP Impacted	CE of New Castle			35	~770
MGP Impacted (TCLP Benzene 0.2<x<0.5 mg/l)	CE Southeast Pennsylvania			5	~110

**Exported Material Truck Log**

Number	Excavation Grid	Disposal Facility	Disposal Profile	Manifest Number	Trucking Company	Truck License Plate
1	WC-GHE (13-20)	CMW Emelle	MGP soil with TCE >25 ppm	007412496 GBF	Horwith	AH15527
2	WC-GHE (13-20)	CMW Emelle	MGP soil with TCE >25 ppm	007412497 GBF	Horwith	AH32699
3	WC-GHE (13-20)	CMW Emelle	MGP soil with TCE >25 ppm	007412498 GBF	Horwith	AH31897
4	WC-GHE (13-20)	CMW Emelle	MGP soil with TCE >25 ppm	007412499 GBF	Horwith	AH15529
5	WC-GHE (13-20)	CMW Emelle	MGP soil with TCE >25 ppm	007412500 GBF	Horwith	AG61522
6	WC-GHN (13-20)	CMW Emelle	MGP soil with TCE >25 ppm	007412501 GBF	Horwith	AH32699
7	WC-GHN (13-20)	CMW Emelle	MGP soil with TCE >25 ppm	007412502 GBF	Horwith	AH31897

**DAILY STATUS REPORT**

<b>PROJECT:</b>	Former Fulton MGP – Parcels III and IV (Site No.: 224051)
<b>ADDRESS:</b>	545 Sackett St., Brooklyn, NY
<b>PREPARED BY:</b>	Roux Environmental Engineering and Geology, D.P.C.
<b>DATE:</b>	April 25, 2024
<b>WEATHER:</b>	Temp: 42-56°F, Cloudy, RH: 53% Pressure: 30.33" in Hg Wind: NE @ 10 mph
<b>TIME:</b>	07:00 – 15:30

**Exported Material Truck Log (con't)**

8	WC-GHN (13-20)	CMW Emelle	MGP soil with TCE >25 ppm	007412503 GBF	Horwith	AH15527
9	WC-GHN (13-20)	CMW Emelle	MGP soil with TCE >25 ppm	007412505 GBF	Horwith	AG61522
10	WC-GHN (13-20)	CMW Emelle	MGP soil with TCE >25 ppm	007412504 GBF	Horwith	AH15529

**Dewatering**

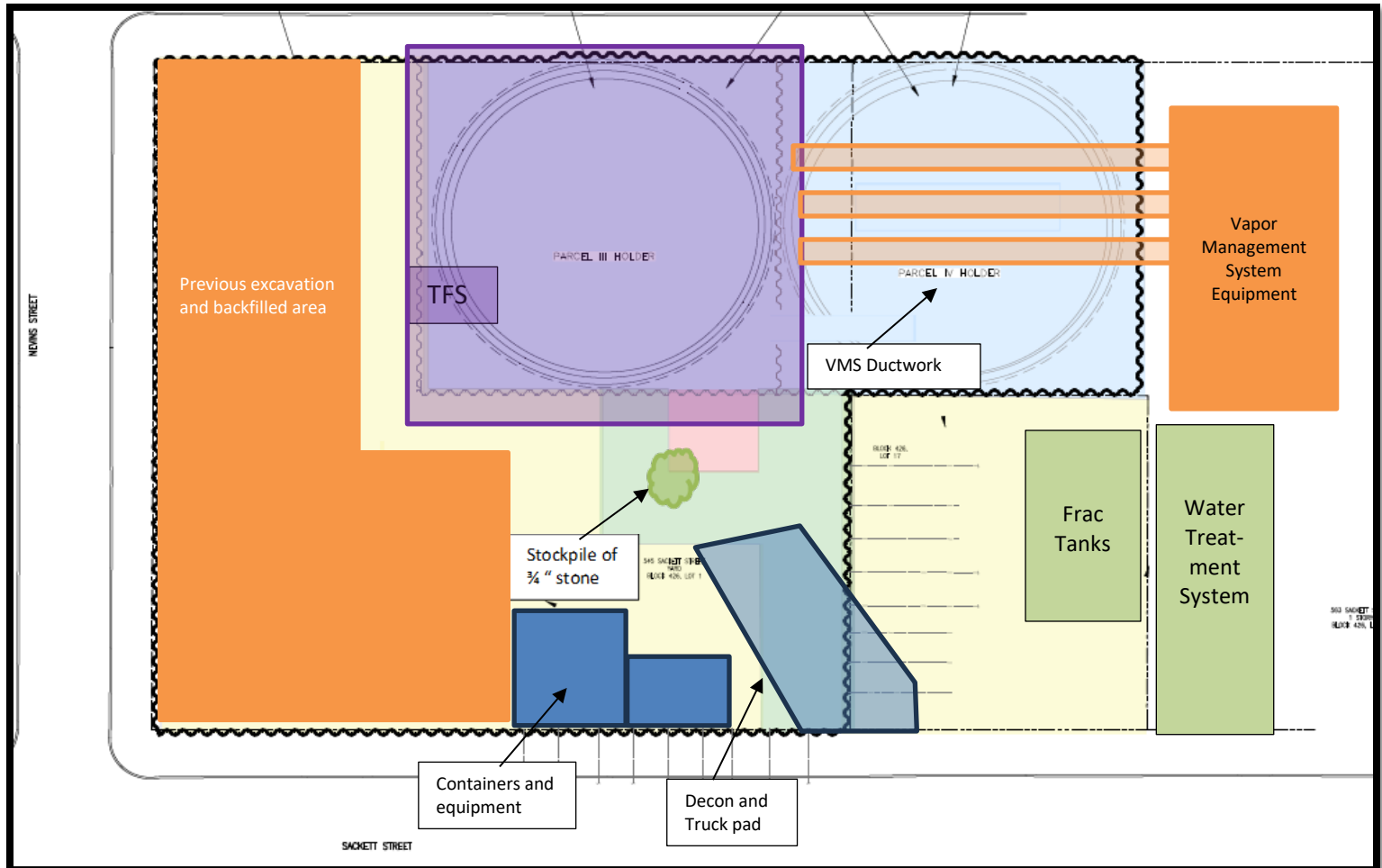
Date	Time	Totalizer Reading
4/24/2024	15:00	67,477,900
4/24/2024	7:05	68,072,600
4/24/2024	10:05	68,193,100
4/24/2024	15:00	68,390,900
<b>Water treated and discharged to NYCDEP sewer since last report:</b>		<b>913,000</b>

**Anticipated Upcoming Work Activities**

- Continue excavation and load out in Gas Holder 3 excavation area.
- Continue dewatering for Gas Holder 3 excavation area and operation of water treatment system.

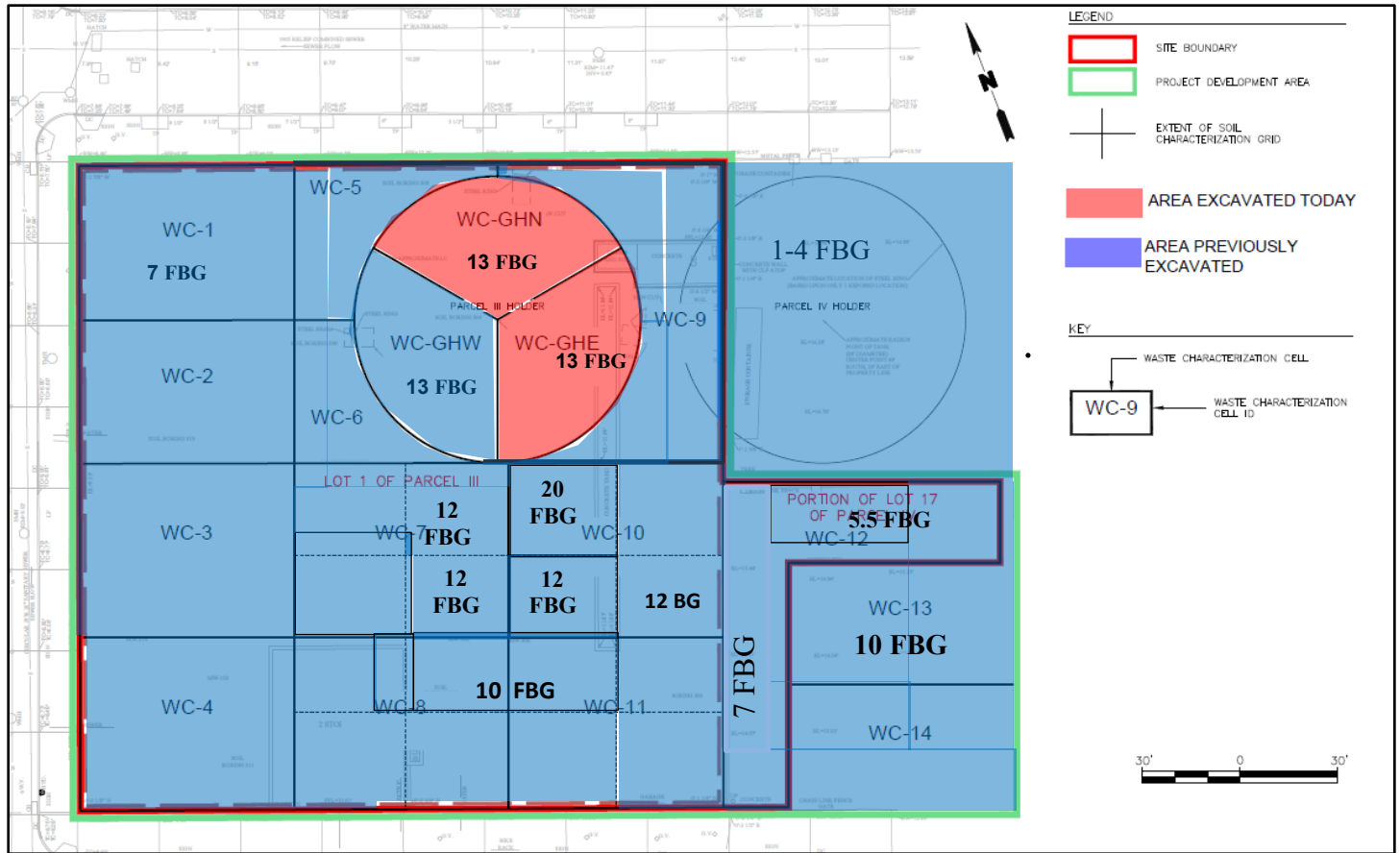
<b>PROJECT:</b>	Former Fulton MGP – Parcels III and IV (Site No.: 224051)
<b>ADDRESS:</b>	545 Sackett St., Brooklyn, NY
<b>PREPARED BY:</b>	Roux Environmental Engineering and Geology, D.P.C.
<b>DATE:</b>	April 25, 2024
<b>WEATHER:</b>	Temp: 42-56°F, Cloudy, RH: 53% Pressure: 30.33" in Hg Wind: NE @ 10 mph
<b>TIME:</b>	07:00 – 15:30

### Site Layout



<b>PROJECT:</b>	Former Fulton MGP – Parcels III and IV (Site No.: 224051)
<b>ADDRESS:</b>	545 Sackett St., Brooklyn, NY
<b>PREPARED BY:</b>	Roux Environmental Engineering and Geology, D.P.C.
<b>DATE:</b>	April 25, 2024
<b>WEATHER:</b>	Temp: 42-56°F, Cloudy, RH: 53% Pressure: 30.33" in Hg Wind: NE @ 10 mph
<b>TIME:</b>	07:00 – 15:30

### Excavation Diagram



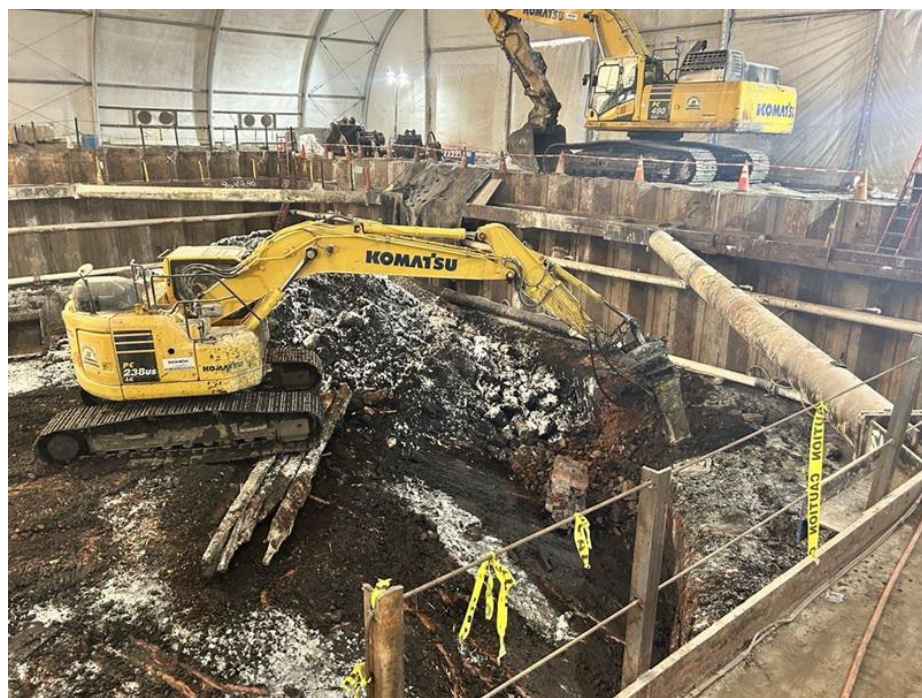


<b>PROJECT:</b>	Former Fulton MGP – Parcels III and IV (Site No.: 224051)
<b>ADDRESS:</b>	545 Sackett St., Brooklyn, NY
<b>PREPARED BY:</b>	Roux Environmental Engineering and Geology, D.P.C.
<b>DATE:</b>	April 25, 2024
<b>WEATHER:</b>	Temp: 42-56°F, Cloudy, RH: 53% Pressure: 30.33" in Hg Wind: NE @ 10 mph
<b>TIME:</b>	07:00 – 15:30



**Photo 1:**

Looking north, CEI secures the TFS around the truck as material is loaded for disposal offsite.



**Photo 2:**

Looking southeast, CEI demolishes Gas Holder 3 walls in WC-GHW and prepares material for loadout and disposal.

<b>PROJECT:</b>	Former Fulton MGP – Parcels III and IV (Site No.: 224051)
<b>ADDRESS:</b>	545 Sackett St., Brooklyn, NY
<b>PREPARED BY:</b>	Roux Environmental Engineering and Geology, D.P.C.
<b>DATE:</b>	April 25, 2024
<b>WEATHER:</b>	Temp: 42-56°F, Cloudy, RH: 53% Pressure: 30.33" in Hg Wind: NE @ 10 mph
<b>TIME:</b>	07:00 – 15:30



**Photo 3:**

Looking northeast, CEI applied Atmos odor suppressant foam on exposed soil inside TFS to mitigate odors at the completion of the workday.