

# CAMP MONITORING REPORT

545 Sackett Street

04/29/24 through 05/05/24

This Weekly Air Monitoring Report summarizes perimeter air monitoring data collected during the referenced period in accordance with the Community Air Monitoring Plan (CAMP) which was included as part of the NYSDEC approved Remedial Action Work Plan for the Former Fulton Manufactured Gas Plant (MGP) Site – Parcel III and Portion of Parcel IV. Continuous monitoring for total volatile organic compounds (TVOCs) and airborne particulate dust (PM<sub>10</sub>) concentrations is being conducted at five air monitoring stations (AMS-1 through AMS-5) around the perimeter of the Site. The program includes compound-specific monitoring for benzene and tri-chloroethylene (TCE) if TVOC concentrations are detected above the alert level at the air monitoring station.

## Work Performed

- Performed community air monitoring.
- CEI excavated soil from the Parcel III holder within the temporary fabric structure and transported it offsite for disposal.
- CEI placed backfill in completed portions of the Parcel III holder excavation.
- CEI operated the vapor management system and the water treatment system, and ECS operated the dewatering system.
- CEI received deliveries and performed general housekeeping.




## Air Monitoring Summary

There were no TVOCs or PM<sub>10</sub> concentrations above the CAMP-established action levels, or observations of dust or odors associated with the Site during the monitoring period.

Figure 1 – CAMP Air Monitoring Station Locations



Key:

-  Perimeter Fence (approximate alignment)
-  AMS-1 Air Monitoring Station (approximate location)
-  HH-1 Handheld Monitoring Location (varies throughout the day)

# CAMP MONITORING REPORT

545 Sackett Street

04/29/24 through 05/05/24

Figure 2 – Summary of TVOC, Benzene, and Tri-chloroethylene Concentrations 04/29/24 through 05/05/24

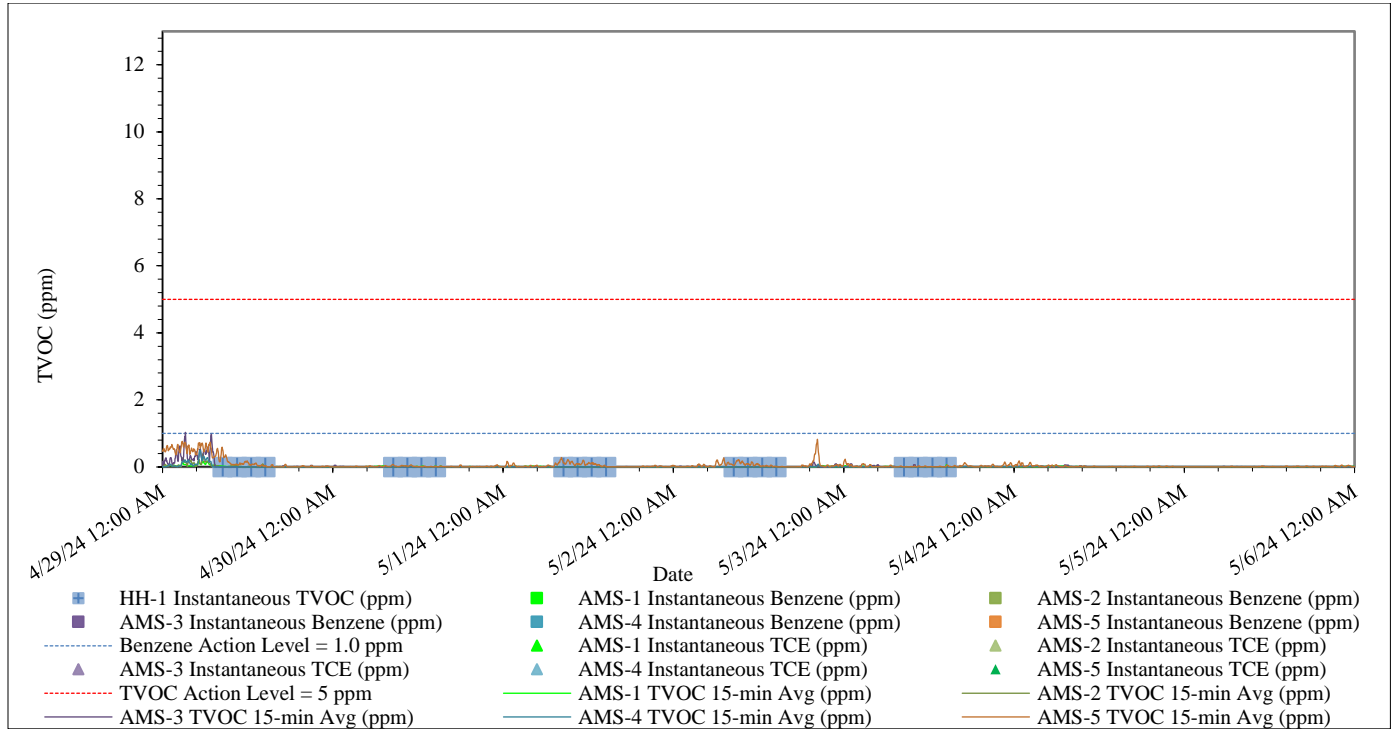


Figure 3 – Summary of PM<sub>10</sub> Concentrations 04/29/24 through 05/05/24

