

PROJECT:	Former Fulton MGP – Parcels III and IV (Site No.: 224051)
ADDRESS:	545 Sackett St., Brooklyn, NY
PREPARED BY:	Roux Environmental Engineering and Geology, D.P.C.
DATE:	May 13, 2024
WEATHER:	Temp: 47-68°F, Cloudy, RH: 84% Pressure: 29.77" in Hg Wind: E @ 13 mph
TIME:	07:00 – 15:30

Project TeamGeneral Contractor and Subcontractors:

- Mega Contracting Group, LLC (Mega)
- Creamer Environmental, Inc. (CEI)
- Earth Construction Services, LLC (ECS)

Engineers and Consultants:

- Roux Environmental Engineering and Geology, D.P.C. (Roux)
- GZA GeoEnvironmental Inc. of New York (GZANY)
- WSP USA (WSP)

Remedial Action Work SummaryWork Activities Performed Onsite:

- Excavation and loadout of material for offsite disposal at CMW Emelle.
- Demolition of Gas Holder 3 foundation.
- Placement of backfill in Gas Holder 3 excavation area.
- Dewatering operations for Gas Holder 3 excavation area.

Contractor Work Performed Onsite:

Creamer Environmental Inc. (CEI) excavated material and loaded out 10 trucks (approximately 200 tons) of MGP impacted material with TCE >25 ppm from waste characterization grid WC-GHN (13-20) for disposal at Chemical Waste Management (CMW) Emelle. CEI continued the demolition of the former Gas Holder 3 walls and the bottom slab. CEI used previously imported general fill from Vulcan Wantage Quarry, New Jersey as backfill in the completed excavation sections of waste characterization grid WC-GHN and WC-GHW in Gas Holder 3.

Earth Construction Services, LLC (ECS) continued 24-hour operation of the dewatering system for the Gas Holder 3 excavation area. Since the last reporting period, CEI treated approximately 2,675,100 gallons of recovered construction wastewater through the water treatment system (WTS) and discharged the treated water to the New York City Department of Environmental Protection (NYCDEP) combined sewer system. Routine maintenance to onsite dewatering and water treatment systems was performed.

The vapor management system (VMS) associated with the TFS was operated throughout the day. Other dust and odor control measures (wetting, tarping, limiting vehicle speeds, covering trucks inside TFS, spraying loaded material with odor suppressant, etc.) continued to be performed to ensure there were no impacts to the neighborhood. Exposed soils were covered with Atmos odor suppressing foam during the operations and at the conclusion of the workday.

Air Monitoring:

- No VOC or dust exceedances were observed from the community air monitoring program (CAMP).
- GZANY to provide a summary report of CAMP activities separately.

Erosion and Sediment Control:

- None.

Sampling Conducted:

- None.

Other Items of Note:

- Construction activities were observed as part of the ongoing combined sewer overflow (CSO) project west of Nevins Street.

PROJECT:	Former Fulton MGP – Parcels III and IV (Site No.: 224051)
ADDRESS:	545 Sackett St., Brooklyn, NY
PREPARED BY:	Roux Environmental Engineering and Geology, D.P.C.
DATE:	May 13, 2024
WEATHER:	Temp: 47-68°F, Cloudy, RH: 84% Pressure: 29.77" in Hg Wind: E @ 13 mph
TIME:	07:00 – 15:30

Imported Material

Name - Location	Source	During This Reporting Period		Total	
		Loads	Tons	Loads	Tons
Vulcan ASTM #3 (1 ½" Stone)	Vulcan Hamburg Quarry			10	255.36
Vulcan ASTM #57 (3/4" Stone)	Vulcan Hamburg Quarry			5	126.76
Vulcan General Fill	Vulcan Wantage Quarry			753	18,967.74

Exported Material

Material	Facility	During This Reporting Period		Total	
		Loads	Tons	Loads	Tons
TCE Impacted Haz Hot Spots	CWM Emelle			7	161.72
Cd Impacted Haz Material from WC-5	CWM Emelle			3	49.45
Pb Impacted Haz from Parcel IV Hot Spot	CWM Emelle			25	536.72
Cd Impacted Haz Material from WC-5	Clean Earth (CE) NJ			16	397.75
Concrete for Recycling	Bayshore			27	~509.87
Concrete for Landfill	WM Fairless			63	~1,415.93
Urban Fill for CVOC Orange Zone (Lot 17)	WM Fairless Urban Fill-OZ			47	~1034
Urban Fill for CVOC Orange Zone (Lot 49)	WM Fairless Urban Fill-OZ			24	~528
Non-Haz Urban Fill (Lot 17)	CE Carteret			42	~924
Non-Haz Urban Fill (Lot 49)	CE Carteret			73	~1,606
MGP soil with TCE>25 ppm	CE ESMI			181	~3,906
	CE Southeast Pennsylvania			10	~220
	CMW Emelle	10	200	324	~6,480
Non-Haz MGP Impacted (TCLP Benzene > 0.5)	CE Southeast Pennsylvania			8	~237.97
Non-Haz MGP Impacted (TCLP Benzene < 0.5)	CE Southeast Pennsylvania			119	~2,614
Non-Haz Contaminated Urban Fill	WM Fairless			387	~8,134.69
Non-Haz Urban Fill	CE Carteret -BZ			71	~1,562
Non-Haz MGP Impacted	CE of New Castle			35	~770
MGP Impacted (TCLP Benzene 0.2<x<0.5 mg/l)	CE Southeast Pennsylvania			5	~110

Exported Material Truck Log

Number	Excavation Grid	Disposal Facility	Disposal Profile	Manifest Number	Trucking Company	Truck License Plate
1	WC-GHN	CMW Emelle	MGP soil with TCE >25 ppm	007413403 GBF	Horwith	AH32699
2	WC-GHN	CMW Emelle	MGP soil with TCE >25 ppm	007413404 GBF	Horwith	AH15530
3	WC-GHN	CMW Emelle	MGP soil with TCE >25 ppm	007413405 GBF	Horwith	AG61522
4	WC-GHN	CMW Emelle	MGP soil with TCE >25 ppm	007413406 GBF	Horwith	AH15529
5	WC-GHN	CMW Emelle	MGP soil with TCE >25 ppm	007413407 GBF	Horwith	AH15528
6	WC-GHN	CMW Emelle	MGP soil with TCE >25 ppm	007413408 GBF	Horwith	AH32699
7	WC-GHN	CMW Emelle	MGP soil with TCE >25 ppm	007413409 GBF	Horwith	AH15530
8	WC-GHN	CMW Emelle	MGP soil with TCE >25 ppm	007413410 GBF	Horwith	AG61522
9	WC-GHN	CMW Emelle	MGP soil with TCE >25 ppm	007413411 GBF	Horwith	AH15529
10	WC-GHN	CMW Emelle	MGP soil with TCE >25 ppm	007413412 GBF	Horwith	AH15528

**DAILY STATUS REPORT**

PROJECT:	Former Fulton MGP – Parcels III and IV (Site No.: 224051)
ADDRESS:	545 Sackett St., Brooklyn, NY
PREPARED BY:	Roux Environmental Engineering and Geology, D.P.C.
DATE:	May 13, 2024
WEATHER:	Temp: 47-68°F, Cloudy, RH: 84% Pressure: 29.77" in Hg Wind: E @ 13 mph
TIME:	07:00 – 15:30

Dewatering

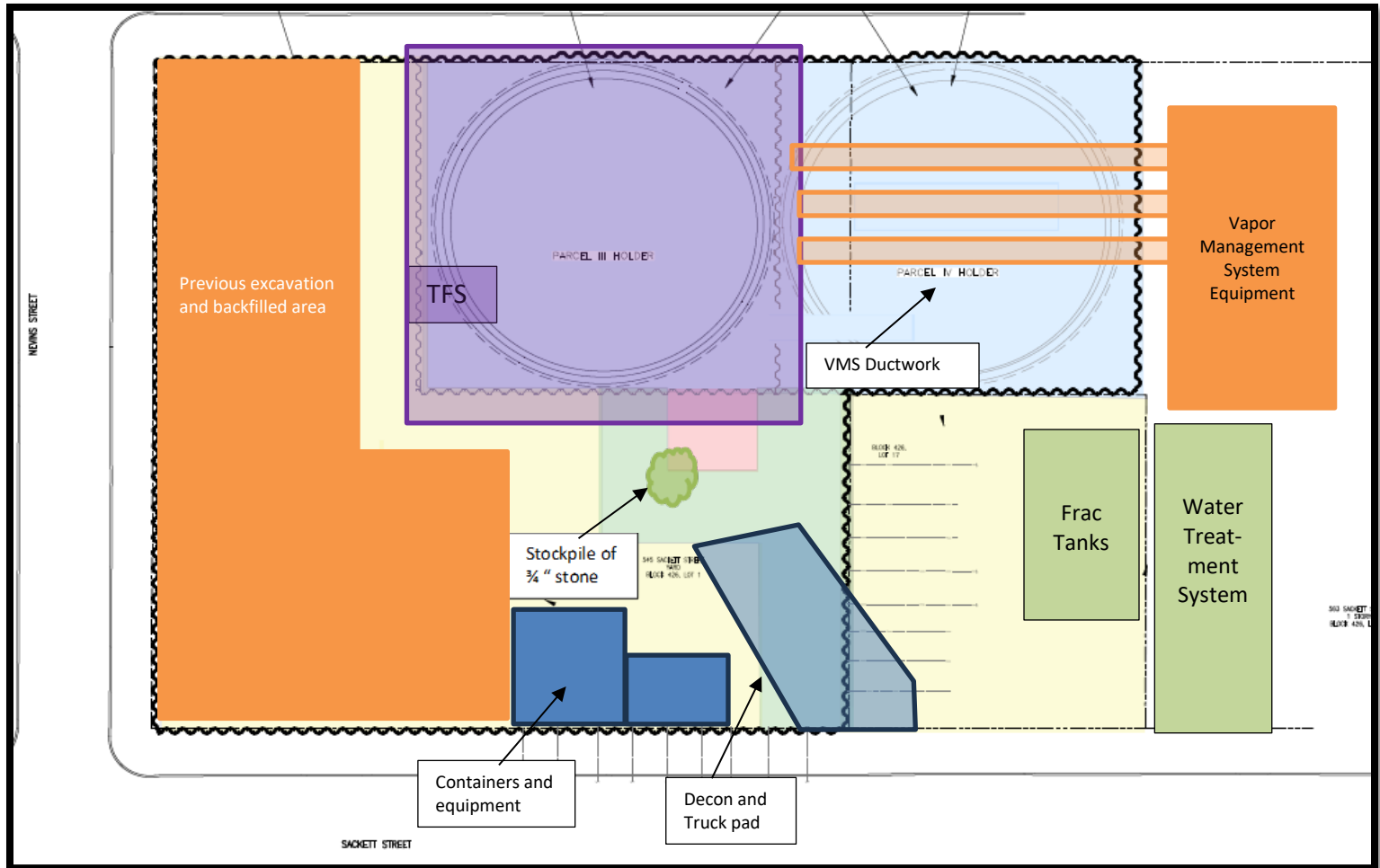
Date	Time	Totalizer Reading
5/10/2024	15:00	82,378,100
5/13/2024	7:05	84,687,100
5/13/2024	10:00	84,814,700
5/13/2024	15:00	85,053,200
Water treated and discharged to NYCDEP sewer since last report:		2,675,100

Anticipated Upcoming Work Activities

- Continue demolition, excavation, load out and backfill in Gas Holder 3 excavation area.
- Continue dewatering for Gas Holder 3 excavation area and operation of water treatment system.

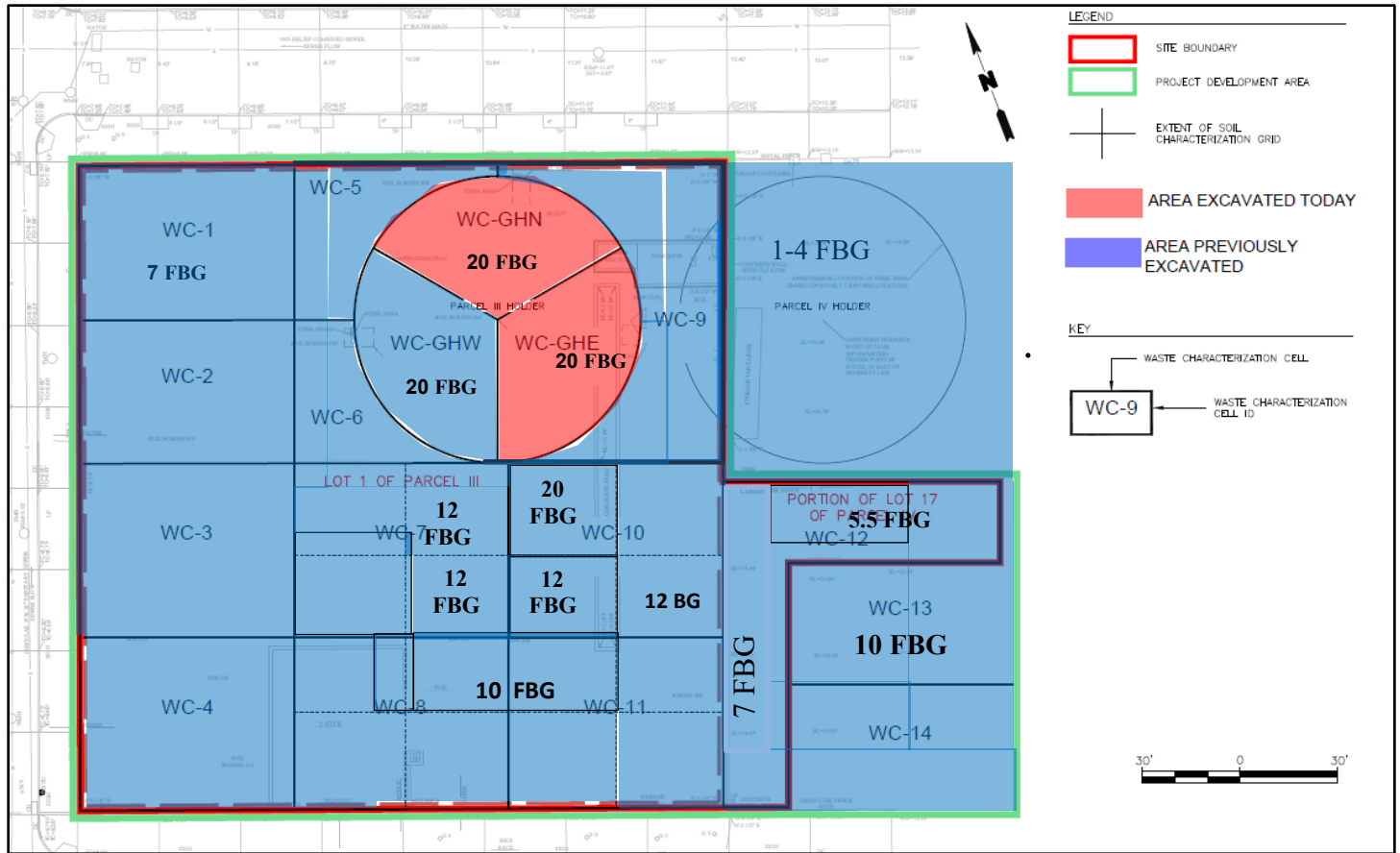
PROJECT:	Former Fulton MGP – Parcels III and IV (Site No.: 224051)
ADDRESS:	545 Sackett St., Brooklyn, NY
PREPARED BY:	Roux Environmental Engineering and Geology, D.P.C.
DATE:	May 13, 2024
WEATHER:	Temp: 47-68°F, Cloudy, RH: 84% Pressure: 29.77" in Hg Wind: E @ 13 mph
TIME:	07:00 – 15:30

Site Layout



PROJECT:	Former Fulton MGP – Parcels III and IV (Site No.: 224051)
ADDRESS:	545 Sackett St., Brooklyn, NY
PREPARED BY:	Roux Environmental Engineering and Geology, D.P.C.
DATE:	May 13, 2024
WEATHER:	Temp: 47-68°F, Cloudy, RH: 84% Pressure: 29.77" in Hg Wind: E @ 13 mph
TIME:	07:00 – 15:30

Excavation Diagram



PROJECT:	Former Fulton MGP – Parcels III and IV (Site No.: 224051)
ADDRESS:	545 Sackett St., Brooklyn, NY
PREPARED BY:	Roux Environmental Engineering and Geology, D.P.C.
DATE:	May 13, 2024
WEATHER:	Temp: 47-68°F, Cloudy, RH: 84% Pressure: 29.77" in Hg Wind: E @ 13 mph
TIME:	07:00 – 15:30



Photo 1:

Looking north, CEI secured the TFS around the truck prior to material being loaded for disposal offsite.



Photo 2:

Looking east, CEI demolishing former Gas Holder 3 structure and excavating material from waste characterization grid WC-GHN.

PROJECT:	Former Fulton MGP – Parcels III and IV (Site No.: 224051)
ADDRESS:	545 Sackett St., Brooklyn, NY
PREPARED BY:	Roux Environmental Engineering and Geology, D.P.C.
DATE:	May 13, 2024
WEATHER:	Temp: 47-68°F, Cloudy, RH: 84% Pressure: 29.77" in Hg Wind: E @ 13 mph
TIME:	07:00 – 15:30

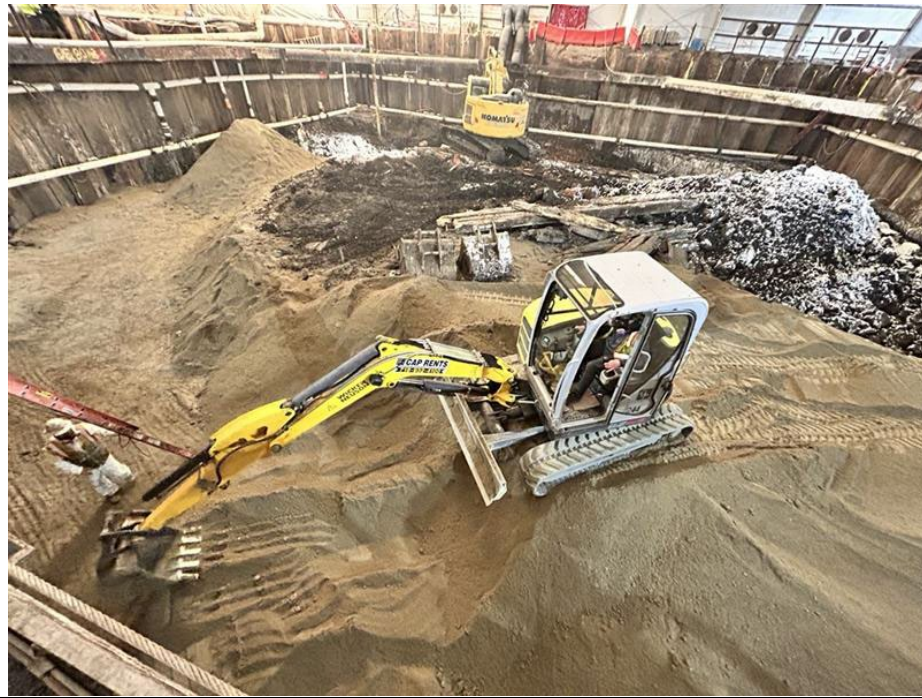


Photo 3:

Looking northeast, CEI used previously imported general fill from Vulcan Wantage Quarry, New Jersey as backfill in the completed excavation sections of waste characterization grid WC-GHW.