

| | |
|---------------------|----------------------------------------------------------------------|
| PROJECT: | Former Fulton MGP – Parcels III and IV (Site No.: 224051) |
| ADDRESS: | 545 Sackett St., Brooklyn, NY |
| PREPARED BY: | Roux Environmental Engineering and Geology, D.P.C. |
| DATE: | June 10, 2024 |
| WEATHER: | Temp: 62-77°F, Cloudy, RH: 40% Pressure: 29.66 inHg Wind: WNW @8 mph |
| TIME: | 07:00 – 15:15 |

Project TeamGeneral Contractor and Subcontractors:

- Mega Contracting Group, LLC (Mega)
- Creamer Environmental, Inc. (CEI)
- Earth Construction Services, LLC (ECS)

Engineers and Consultants:

- Roux Environmental Engineering and Geology, D.P.C. (Roux)
- GZA GeoEnvironmental Inc. of New York (GZANY)
- WSP USA (WSP)

Remedial Action Work SummaryWork Activities Performed Onsite:

- Backfill of completed excavation sections in Gas Holder 3.
- Previously recovered construction wastewater was treated for disposal.

Contractor Work Performed Onsite:

Creamer Environmental Inc. (CEI) imported 45 trucks (1,071.89 tons) of general fill from Vulcan Wantage Quarry of New Jersey. Imported general fill was used as backfilling in the completed sections in the Gas Holder 3 excavation area. CEI assisted ECS in removing the dewatering system from the northern perimeter of the former Gas Holder 3 excavation area.

Earth Construction Services, LLC (ECS) continued to remove header pipes of the dewatering system from the southern perimeter of the Former Gas Holder 3. Since the last reporting period, CEI treated approximately 22,400 gallons of previously recovered construction wastewater that was stored in the onsite frac tanks through the WTS and discharged the treated water to the New York City Department of Environmental Protection (NYCDEP) combined sewer system.

The vapor management system (VMS) associated with the tension fabric structure (TFS) was operated throughout the day. The VMS is being taken offline; two of the four onsite blowers were operated throughout the day. Other dust and odor control measures (wetting, tarping, limiting vehicle speeds, etc.) continued to be performed to ensure there were no impacts to the neighborhood. Truck tires were washed to ensure material was not being tracked offsite.

Air Monitoring:

- No VOC or dust exceedances were observed from the community air monitoring program (CAMP).
- GZANY to provide a summary report of CAMP activities separately.

Erosion and Sediment Control:

- None.

Sampling Conducted:

- None.

Other Items of Note:

- Construction activities were observed as part of the ongoing combined sewer overflow (CSO) project west of Nevins Street.

**DAILY STATUS REPORT**

| | |
|---------------------|----------------------------------------------------------------------|
| PROJECT: | Former Fulton MGP – Parcels III and IV (Site No.: 224051) |
| ADDRESS: | 545 Sackett St., Brooklyn, NY |
| PREPARED BY: | Roux Environmental Engineering and Geology, D.P.C. |
| DATE: | June 10, 2024 |
| WEATHER: | Temp: 62-77°F, Cloudy, RH: 40% Pressure: 29.66 inHg Wind: WNW @8 mph |
| TIME: | 07:00 – 15:15 |

Imported Material

| Name - Location | Source | During This Reporting Period | | Total | |
|------------------------------|-----------------------|------------------------------|----------|-------|-----------|
| | | Loads | Tons | Loads | Tons |
| Vulcan ASTM #3 (1 ½" Stone) | Vulcan Hamburg Quarry | | | 11 | 279.71 |
| Vulcan ASTM #57 (3/4" Stone) | Vulcan Hamburg Quarry | | | 6 | 152.05 |
| Vulcan General Fill | Vulcan Wantage Quarry | 45 | 1,071.89 | 1,138 | 28,411.43 |

Exported Material

| Material | Facility | During This Reporting Period | | Total | |
|--------------------------------------------|---------------------------|------------------------------|------|-------|-----------|
| | | Loads | Tons | Loads | Tons |
| TCE Impacted Haz Hot Spots | CWM Emelle | | | 7 | 161.72 |
| Cd Impacted Haz Material from WC-5 | CWM Emelle | | | 3 | 49.45 |
| Pb Impacted Haz from Parcel IV Hot Spot | CWM Emelle | | | 25 | 536.72 |
| Cd Impacted Haz Material from WC-5 | Clean Earth (CE) NJ | | | 16 | 397.75 |
| Concrete for Recycling | Bayshore | | | 27 | ~509.87 |
| Concrete for Landfill | WM Fairless | | | 63 | ~1,415.93 |
| Urban Fill for CVOC Orange Zone (Lot 17) | WM Fairless Urban Fill-OZ | | | 47 | ~1034 |
| Urban Fill for CVOC Orange Zone (Lot 49) | WM Fairless Urban Fill-OZ | | | 24 | ~528 |
| Non-Haz Urban Fill (Lot 17) | CE Carteret | | | 42 | ~924 |
| Non-Haz Urban Fill (Lot 49) | CE Carteret | | | 73 | ~1,606 |
| MGP soil with TCE>25 ppm | CE ESMI | | | 181 | ~3,906 |
| | CE Southeast Pennsylvania | | | 10 | ~220 |
| | CMW Emelle | | | 404 | ~7,880 |
| Non-Haz MGP Impacted (TCLP Benzene > 0.5) | CE Southeast Pennsylvania | | | 8 | ~237.97 |
| Non-Haz MGP Impacted (TCLP Benzene < 0.5) | CE Southeast Pennsylvania | | | 119 | ~2,614 |
| Non-Haz Contaminated Urban Fill | WM Fairless | | | 387 | ~8,134.69 |
| Non-Haz Urban Fill | CE Carteret -BZ | | | 71 | ~1,562 |
| Non-Haz MGP Impacted | CE of New Castle | | | 35 | ~770 |
| MGP Impacted (TCLP Benzene 0.2<x<0.5 mg/l) | CE Southeast Pennsylvania | | | 5 | ~110 |

Exported Material Truck Log

| Number | Excavation Grid | Disposal Facility | Disposal Profile | Manifest Number | Trucking Company | Truck License Plate |
|--------|-----------------|-------------------|------------------|-----------------|------------------|---------------------|
| None | | | | | | |

Dewatering

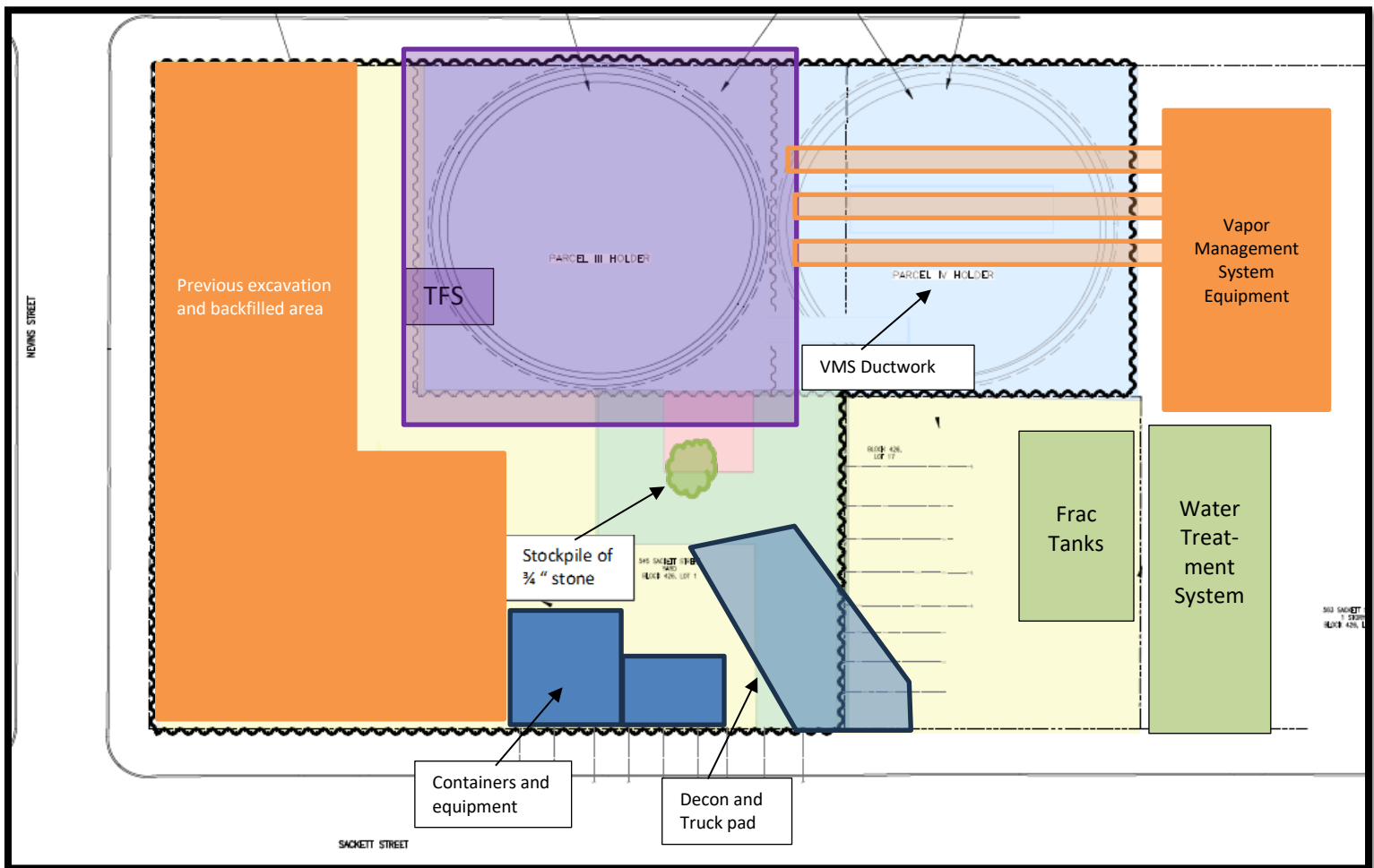
| Date | Time | Totalizer Reading |
|------------------------------------------------------------------------|-------|-------------------|
| 6/7/24 | 15:15 | 100,801,300 |
| 6/10/24 | 7:06 | 100,801,300 |
| 6/10/24 | 11:12 | 100,823,700 |
| 6/10/24 | 15:17 | 100,823,700 |
| Water treated and discharged to NYCDEP sewer since last report: | | 22,400 |

| | |
|---------------------|----------------------------------------------------------------------|
| PROJECT: | Former Fulton MGP – Parcels III and IV (Site No.: 224051) |
| ADDRESS: | 545 Sackett St., Brooklyn, NY |
| PREPARED BY: | Roux Environmental Engineering and Geology, D.P.C. |
| DATE: | June 10, 2024 |
| WEATHER: | Temp: 62-77°F, Cloudy, RH: 40% Pressure: 29.66 inHg Wind: WNW @8 mph |
| TIME: | 07:00 – 15:15 |

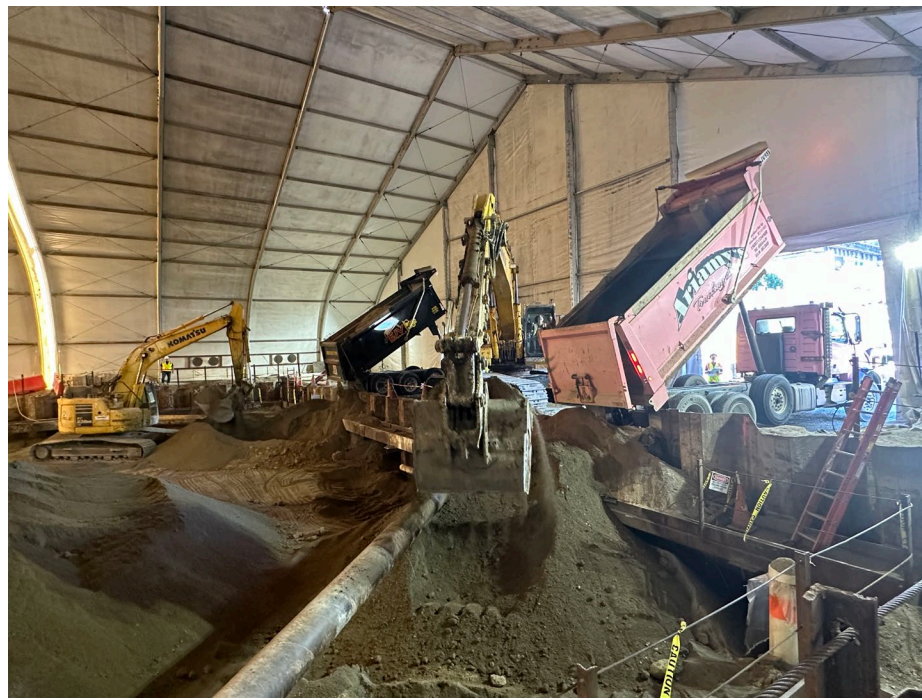
Anticipated Upcoming Work Activities

- Continue backfilling Gas Holder 3.
- Begin removal of support of excavation installed for Gas Holder 3 excavation.

Site Layout



| | |
|---------------------|----------------------------------------------------------------------|
| PROJECT: | Former Fulton MGP – Parcels III and IV (Site No.: 224051) |
| ADDRESS: | 545 Sackett St., Brooklyn, NY |
| PREPARED BY: | Roux Environmental Engineering and Geology, D.P.C. |
| DATE: | June 10, 2024 |
| WEATHER: | Temp: 62-77°F, Cloudy, RH: 40% Pressure: 29.66 inHg Wind: WNW @8 mph |
| TIME: | 07:00 – 15:15 |

**Photo 1:**

Looking southeast, view of triaxle trucks importing material to be used as backfill the former Gas Holder 3.

**Photo 2:**

Looking southeast, view of CEI spraying water to control onsite dust.

| | |
|---------------------|----------------------------------------------------------------------|
| PROJECT: | Former Fulton MGP – Parcels III and IV (Site No.: 224051) |
| ADDRESS: | 545 Sackett St., Brooklyn, NY |
| PREPARED BY: | Roux Environmental Engineering and Geology, D.P.C. |
| DATE: | June 10, 2024 |
| WEATHER: | Temp: 62-77°F, Cloudy, RH: 40% Pressure: 29.66 inHg Wind: WNW @8 mph |
| TIME: | 07:00 – 15:15 |

**Photo 3:**

Looking northeast, view of CEI compacting newly placed backfill in the former Gas Holder 3.