



## DAILY STATUS REPORT

<b>PROJECT:</b>	Former Fulton MGP – Parcels III and IV (Site No.: 224051)
<b>ADDRESS:</b>	545 Sackett St., Brooklyn, NY
<b>PREPARED BY:</b>	Roux Environmental Engineering and Geology, D.P.C.
<b>DATE:</b>	June 17, 2024
<b>WEATHER:</b>	Temp: 64-84°F, Sunny, RH: 84% Pressure: 30.22 in Hg Wind: SW @ 6 mph
<b>TIME:</b>	07:00 – 15:15

### Project Team

#### General Contractor and Subcontractors:

- Mega Contracting Group, LLC (Mega)
- Creamer Environmental, Inc. (CEI)

#### Engineers and Consultants:

- Roux Environmental Engineering and Geology, D.P.C. (Roux)
- GZA GeoEnvironmental Inc. of New York (GZANY)
- WSP USA (WSP)

### Remedial Action Work Summary

#### Work Activities Performed Onsite:

- Backfilling and grading within former Gas Holder 3 excavation area.
- Import general fill from Vulcan Wantage Quarry.
- Removal of support of excavation from former Gas Holder 3 excavation area.

#### Contractor Work Performed Onsite:

Creamer Environmental Inc. (CEI) imported 19 trucks (462.73) of general fill from Vulcan Wantage Quarry of New Jersey and continued backfilling the eastern side of the former Gas Holder 3 excavation area. Work areas were graded in preparation of future onsite work and relocation of the temporary fabric structure (TFS). CEI completed the removal the support of excavation (SOE) structures associated with the former Gas Holder 3 excavation area: walers, bracing and chairs. Dust and odor control measures (wetting, tarping, limiting vehicle speeds, etc.) continued to be performed to ensure there were no impacts to the neighborhood. Truck tires were washed prior to leaving to ensure material was not being tracked offsite.

#### Air Monitoring:

- No VOC or dust exceedances were observed from the community air monitoring program (CAMP).
- GZANY to provide a summary report of CAMP activities separately.

#### Erosion and Sediment Control:

- None.

#### Sampling Conducted:

- None.

#### Other Items of Note:

- Construction activities were observed as part of the ongoing combined sewer overflow (CSO) project west of Nevins Street.

### Imported Material

Name - Location	Source	During This Reporting Period		Total	
		Loads	Tons	Loads	Tons
Vulcan ASTM #3 (1 ½" Stone)	Vulcan Hamburg Quarry			11	279.71
Vulcan ASTM #57 (3/4" Stone)	Vulcan Hamburg Quarry			6	152.05
Vulcan General Fill	Vulcan Wantage Quarry	19	462.73	1,177	29,362.73



### DAILY STATUS REPORT

<b>PROJECT:</b>	Former Fulton MGP – Parcels III and IV (Site No.: 224051)
<b>ADDRESS:</b>	545 Sackett St., Brooklyn, NY
<b>PREPARED BY:</b>	Roux Environmental Engineering and Geology, D.P.C.
<b>DATE:</b>	June 17, 2024
<b>WEATHER:</b>	Temp: 64-84°F, Sunny, RH: 84% Pressure: 30.22 in Hg Wind: SW @ 6 mph
<b>TIME:</b>	07:00 – 15:15

#### Exported Material

Material	Facility	During This Reporting Period		Total	
		Loads	Tons	Loads	Tons
TCE Impacted Haz Hot Spots	CWM Emelle			7	161.72
Cd Impacted Haz Material from WC-5	CWM Emelle			3	49.45
Pb Impacted Haz from Parcel IV Hot Spot	CWM Emelle			25	536.72
Cd Impacted Haz Material from WC-5	Clean Earth (CE) NJ			16	397.75
Concrete for Recycling	Bayshore			27	~509.87
Concrete for Landfill	WM Fairless			63	~1,415.93
Urban Fill for CVOC Orange Zone (Lot 17)	WM Fairless Urban Fill-OZ			47	~1034
Urban Fill for CVOC Orange Zone (Lot 49)	WM Fairless Urban Fill-OZ			24	~528
Non-Haz Urban Fill (Lot 17)	CE Carteret			42	~924
Non-Haz Urban Fill (Lot 49)	CE Carteret			73	~1,606
MGP soil with TCE>25 ppm	CE ESMI			181	~3,906
	CE Southeast Pennsylvania			10	~220
	CMW Emelle			404	~7,880
Non-Haz MGP Impacted (TCLP Benzene > 0.5)	CE Southeast Pennsylvania			8	~237.97
Non-Haz MGP Impacted (TCLP Benzene < 0.5)	CE Southeast Pennsylvania			119	~2,614
Non-Haz Contaminated Urban Fill	WM Fairless			387	~8,134.69
Non-Haz Urban Fill	CE Carteret -BZ			71	~1,562
Non-Haz MGP Impacted	CE of New Castle			35	~770
MGP Impacted (TCLP Benzene 0.2<x<0.5 mg/l)	CE Southeast Pennsylvania			5	~110

#### Exported Material Truck Log

Number	Excavation Grid	Disposal Facility	Disposal Profile	Manifest Number	Trucking Company	Truck License Plate
None						

#### Dewatering

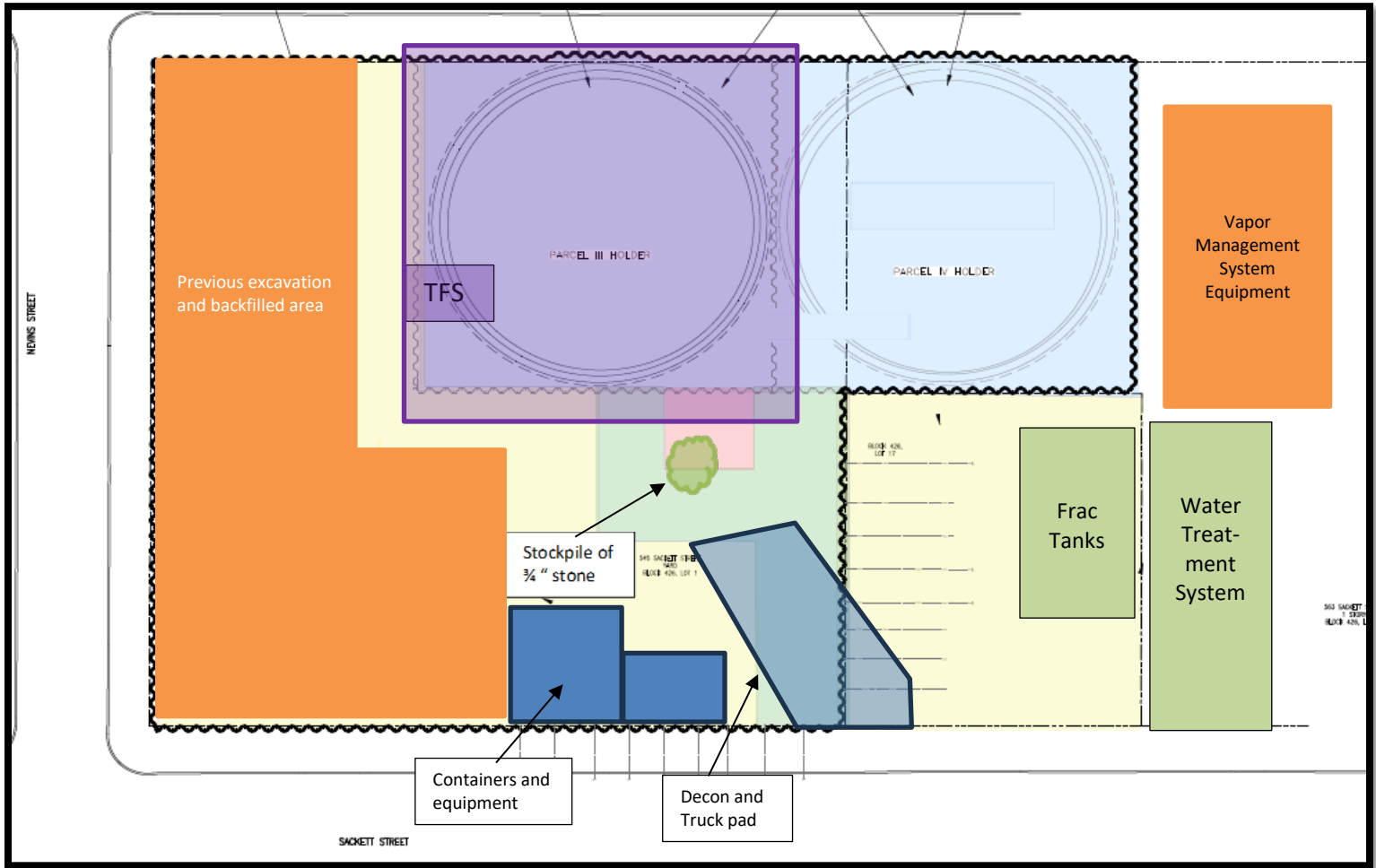
Date	Time	Totalizer Reading
6/14/24	15:12	100,823,700
6/17/24	7:08	100,823,700
6/17/24	15:12	100,823,700
<b>Water treated and discharged to NYCDEP sewer since last report:</b>		<b>0</b>

#### Anticipated Upcoming Work Activities

- Continue backfilling Gas Holder 3.
- Site preparation for TFS relocation.

#### Site Layout

<b>PROJECT:</b>	Former Fulton MGP – Parcels III and IV (Site No.: 224051)
<b>ADDRESS:</b>	545 Sackett St., Brooklyn, NY
<b>PREPARED BY:</b>	Roux Environmental Engineering and Geology, D.P.C.
<b>DATE:</b>	June 17, 2024
<b>WEATHER:</b>	Temp: 64-84°F, Sunny, RH: 84% Pressure: 30.22 in Hg Wind: SW @ 6 mph
<b>TIME:</b>	07:00 – 15:15





<b>PROJECT:</b>	Former Fulton MGP – Parcels III and IV (Site No.: 224051)
<b>ADDRESS:</b>	545 Sackett St., Brooklyn, NY
<b>PREPARED BY:</b>	Roux Environmental Engineering and Geology, D.P.C.
<b>DATE:</b>	June 17, 2024
<b>WEATHER:</b>	Temp: 64-84°F, Sunny, RH: 84% Pressure: 30.22 in Hg Wind: SW @ 6 mph
<b>TIME:</b>	07:00 – 15:15

**Photo 1:**

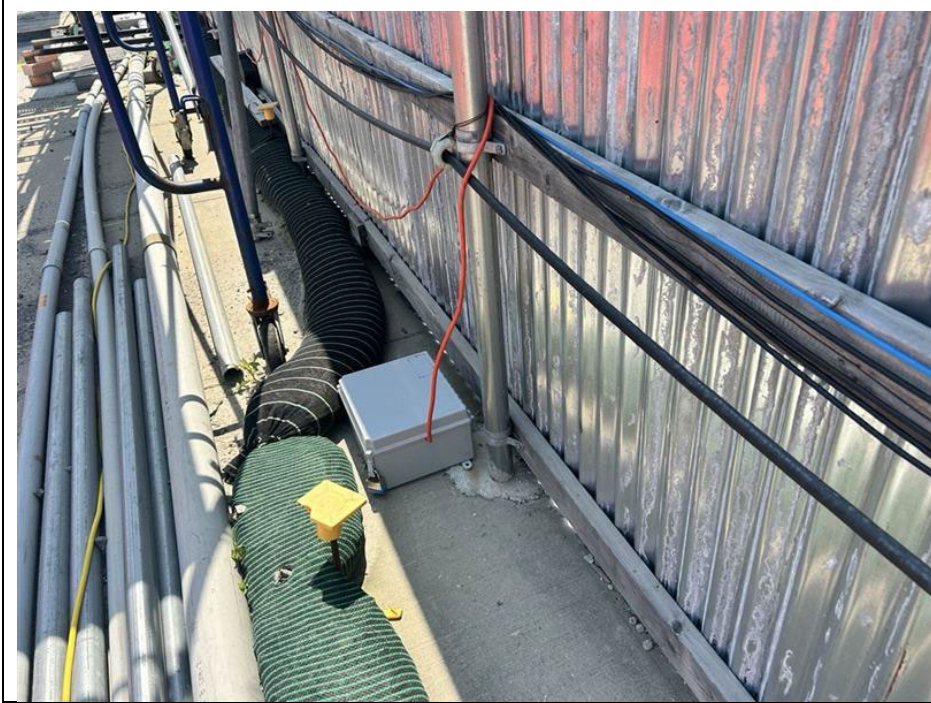
Looking northeast, view of CEI importing general fill from Vulcan Wantage Quarry to backfill on the east side of the former Gas Holder 3 excavation area.

**Photo 2:**

Looking west, view of CEI staging removed SOE structures on the west of the site.



<b>PROJECT:</b>	Former Fulton MGP – Parcels III and IV (Site No.: 224051)
<b>ADDRESS:</b>	545 Sackett St., Brooklyn, NY
<b>PREPARED BY:</b>	Roux Environmental Engineering and Geology, D.P.C.
<b>DATE:</b>	June 17, 2024
<b>WEATHER:</b>	Temp: 64-84°F, Sunny, RH: 84% Pressure: 30.22 in Hg Wind: SW @ 6 mph
<b>TIME:</b>	07:00 – 15:15

**Photo 3:**

Looking east, previously installed vibration monitor along the southern perimeter of Site.