



## DAILY STATUS REPORT

<b>PROJECT:</b>	Former Fulton MGP – Parcels III and IV (Site No.: 224051)
<b>ADDRESS:</b>	545 Sackett St., Brooklyn, NY
<b>PREPARED BY:</b>	Roux Environmental Engineering and Geology, D.P.C.
<b>DATE:</b>	July 10, 2024
<b>WEATHER:</b>	Temp: 77-88°F, Sunny, RH: 66% Pressure: 29.85 in Hg Wind: SSE @ 16 mph
<b>TIME:</b>	07:00 – 15:50

### Project Team

#### General Contractor and Subcontractors:

- Mega Contracting Group, LLC (Mega)
- Creamer Environmental, Inc. (CEI)
- Bay Crane

#### Engineers and Consultants:

- Roux Environmental Engineering and Geology, D.P.C. (Roux)
- GZA GeoEnvironmental Inc. of New York (GZANY)
- WSP USA (WSP)

### Remedial Action Work Summary

#### Work Activities Performed Onsite:

- CEI and Bay Crane assembled a crane for upcoming steel sheeting re-installation.

#### Contractor Work Performed Onsite:

CEI assisted Bay Crane mobilizing and assembling crawler crane GTC1200 and vibratory hammer APE 200 for upcoming steel sheeting re-installation on the west side of former Gas Holder 4. CEI leveled out material to place a wooden platform to support the crane within former Gas Holder 4 excavation area. CEI performed housekeeping throughout the day. Dust and odor control measures (wetting, tarping, limiting vehicle speeds, etc.) continued to be performed to ensure there were no impacts to the neighborhood.

#### Air Monitoring:

- No VOC or dust exceedances were observed from the community air monitoring program (CAMP).
- GZANY to provide a summary report of CAMP activities separately.

#### Erosion and Sediment Control:

- None.

#### Sampling Conducted:

- None.

#### Other Items of Note:

- Construction activities were observed as part of the ongoing combined sewer overflow (CSO) project west of Nevins Street.
- Construction activities were performed at an empty lot south of Sackett Street.

### Imported Material

Name - Location	Source	During This Reporting Period		Total	
		Loads	Tons	Loads	Tons
Vulcan ASTM #3 (1 ½" Stone)	Vulcan Hamburg Quarry			11	279.71
Vulcan ASTM #57 (3/4" Stone)	Vulcan Hamburg Quarry			6	152.05
Vulcan General Fill	Vulcan Wantage Quarry			1,200	29,913.85



### DAILY STATUS REPORT

<b>PROJECT:</b>	Former Fulton MGP – Parcels III and IV (Site No.: 224051)
<b>ADDRESS:</b>	545 Sackett St., Brooklyn, NY
<b>PREPARED BY:</b>	Roux Environmental Engineering and Geology, D.P.C.
<b>DATE:</b>	July 10, 2024
<b>WEATHER:</b>	Temp: 77-88°F, Sunny, RH: 66% Pressure: 29.85 in Hg Wind: SSE @ 16 mph
<b>TIME:</b>	07:00 – 15:50

#### Exported Material

Material	Facility	During This Reporting Period		Total	
		Loads	Tons	Loads	Tons
TCE Impacted Haz Hot Spots	CWM Emelle			7	161.72
Cd Impacted Haz Material from WC-5	CWM Emelle			3	49.45
Pb Impacted Haz from Parcel IV Hot Spot	CWM Emelle			25	536.72
Cd Impacted Haz Material from WC-5	Clean Earth (CE) NJ			16	397.75
Concrete for Recycling	Bayshore			27	~509.87
Concrete for Landfill	WM Fairless			63	~1,415.93
Urban Fill for CVOC Orange Zone (Lot 17)	WM Fairless Urban Fill-OZ			47	~1034
Urban Fill for CVOC Orange Zone (Lot 49)	WM Fairless Urban Fill-OZ			24	~528
Non-Haz Urban Fill (Lot 17)	CE Carteret			42	~924
Non-Haz Urban Fill (Lot 49)	CE Carteret			73	~1,606
MGP soil with TCE>25 ppm	CE ESMI			181	~3,906
	CE Southeast Pennsylvania			10	~220
	CMW Emelle			404	~7,880
Non-Haz MGP Impacted (TCLP Benzene > 0.5)	CE Southeast Pennsylvania			8	~237.97
Non-Haz MGP Impacted (TCLP Benzene < 0.5)	CE Southeast Pennsylvania			119	~2,614
Non-Haz Contaminated Urban Fill	WM Fairless			387	~8,134.69
Non-Haz Urban Fill	CE Carteret -BZ			71	~1,562
Non-Haz MGP Impacted	CE of New Castle			35	~770
MGP Impacted (TCLP Benzene 0.2<x<0.5 mg/l)	CE Southeast Pennsylvania			5	~110

#### Exported Material Truck Log

Number	Excavation Grid	Disposal Facility	Disposal Profile	Manifest Number	Trucking Company	Truck License Plate
None						

#### Dewatering

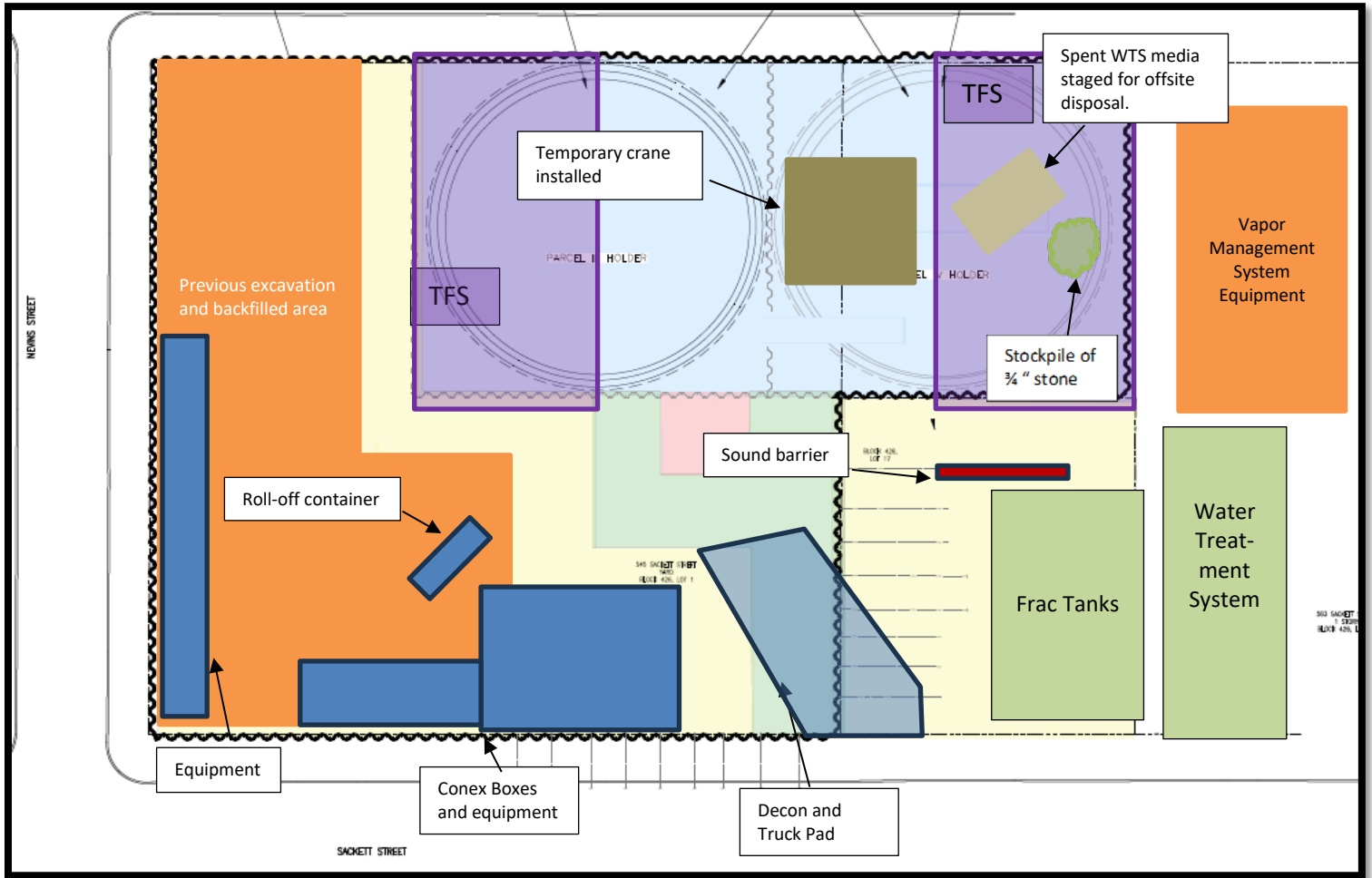
Date	Time	Totalizer Reading
7/10/24	15:15	100,823,700
<b>Water treated and discharged to NYCDEP sewer since last report:</b>		<b>0</b>

#### Anticipated Upcoming Work Activities

- Steel Sheeting installation on the west side of former Gas Holder 4 excavation area.
- Continue carbon media change out activities related to the Water Treatment System.

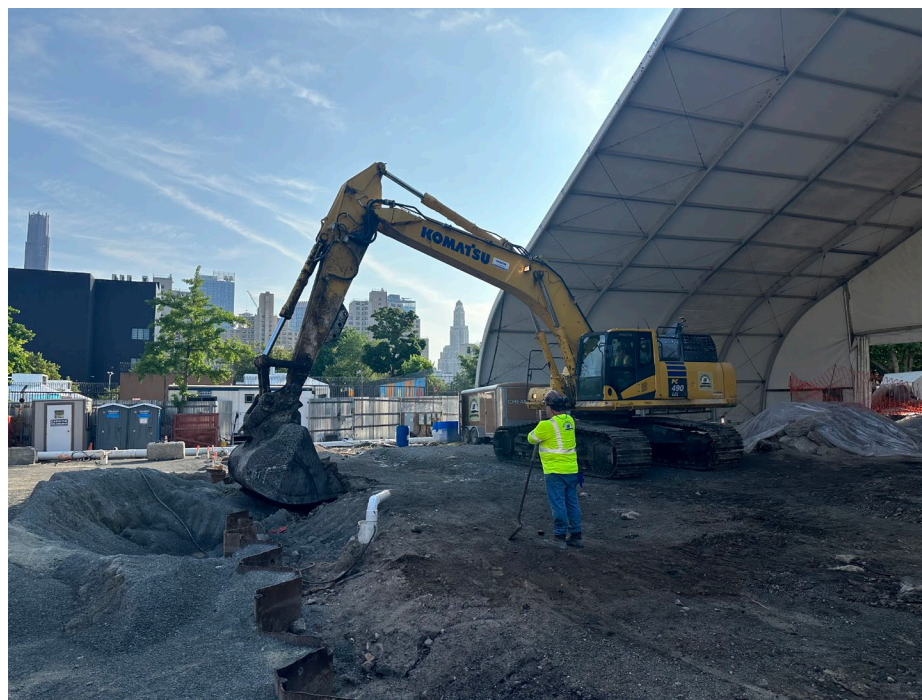
#### Site Layout

<b>PROJECT:</b>	Former Fulton MGP – Parcels III and IV (Site No.: 224051)
<b>ADDRESS:</b>	545 Sackett St., Brooklyn, NY
<b>PREPARED BY:</b>	Roux Environmental Engineering and Geology, D.P.C.
<b>DATE:</b>	July 10, 2024
<b>WEATHER:</b>	Temp: 77-88°F, Sunny, RH: 66% Pressure: 29.85 in Hg Wind: SSE @ 16 mph
<b>TIME:</b>	07:00 – 15:50





<b>PROJECT:</b>	Former Fulton MGP – Parcels III and IV (Site No.: 224051)
<b>ADDRESS:</b>	545 Sackett St., Brooklyn, NY
<b>PREPARED BY:</b>	Roux Environmental Engineering and Geology, D.P.C.
<b>DATE:</b>	July 10, 2024
<b>WEATHER:</b>	Temp: 77-88°F, Sunny, RH: 66% Pressure: 29.85 in Hg Wind: SSE @ 16 mph
<b>TIME:</b>	07:00 – 15:50

**Photo 1:**

Looking north-northeast, view of CEI leveling out material to facilitate crawler crane installations.

**Photo 2:**

Looking east, view of delivery and set up of crawler crane to re-install steel sheeting between Gas Holders 3 and 4.

<b>PROJECT:</b>	Former Fulton MGP – Parcels III and IV (Site No.: 224051)
<b>ADDRESS:</b>	545 Sackett St., Brooklyn, NY
<b>PREPARED BY:</b>	Roux Environmental Engineering and Geology, D.P.C.
<b>DATE:</b>	July 10, 2024
<b>WEATHER:</b>	Temp: 77-88°F, Sunny, RH: 66% Pressure: 29.85 in Hg Wind: SSE @ 16 mph
<b>TIME:</b>	07:00 – 15:50

**Photo 3:**

Looking northwest, view of CEI applying water to the jobsite to prevent dust.